

Data Path : Z:\pestpcbsrv\HPCHEM1\ECD_D\Data\PD093021\
 Data File : PD066000.D
 Signal(s) : Signal #1: ECD1A.ch Signal #2: ECD2B.ch
 Acq On : 30 Sep 2021 13:59
 Operator : AR\AJ
 Sample : M3877-17MSD
 Misc :
 ALS Vial : 21 Sample Multiplier: 1

Instrument :
 ECD_D
 ClientSampleID :
 EW2L8MSD

Manual Integrations
 APPROVED

Ankita
 10/6/2021 1:30:35 PM

Integration File signal 1: autoint1.e
 Integration File signal 2: autoint2.e
 Quant Time: Oct 05 01:58:38 2021
 Quant Method : Z:\pestpcbsrv\HPCHEM1\ECD_D\Method\PD092021CLP.M
 Quant Title : GC Extractables
 QLast Update : Mon Oct 04 09:46:55 2021
 Response via : Initial Calibration
 Integrator: ChemStation

Volume Inj. : 1 µl
 Signal #1 Phase : ZB-MR2 Signal #2 Phase: ZB-MR1
 Signal #1 Info : 30M x 0.32mm x0.2 Signal #2 Info : 30M x 0.32mm x 0.50µm

	Compound	RT#1	RT#2	Resp#1	Resp#2	ng/ml	ng/ml

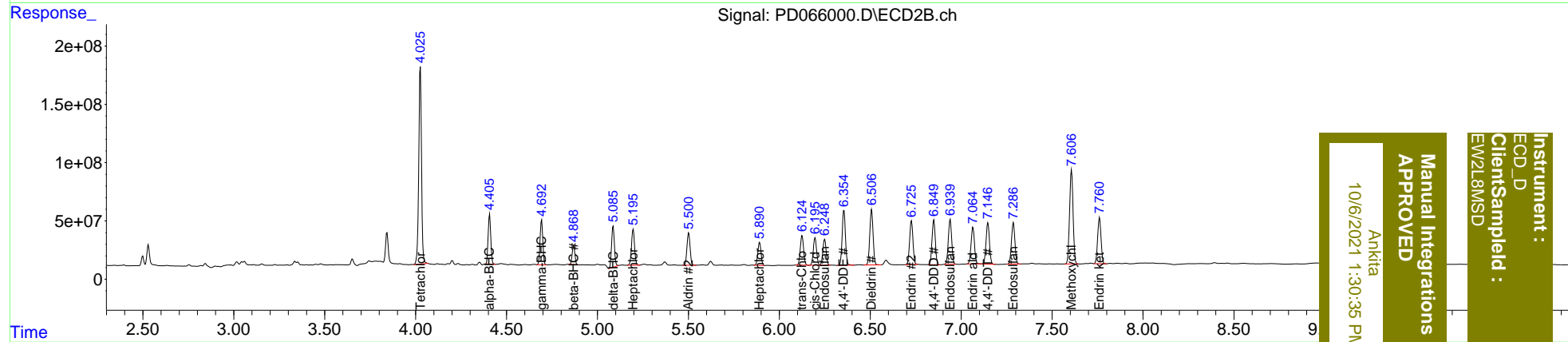
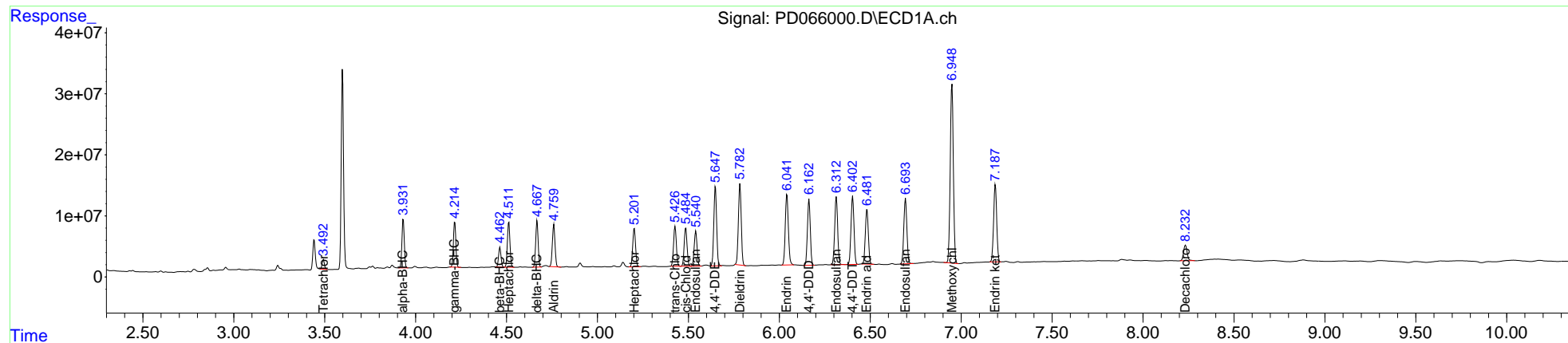
System Monitoring Compounds							
1)	SA Tetrachlo...	3.492	4.025	13809605	1778.3E6	15.956m	250.078m#
2)	SA Decachlor...	8.233	9.083	34765422	91922712	23.511	21.256
Target Compounds							
2)	A alpha-BHC	3.932	4.407	72054816	429.2E6	60.912	45.146 #
3)	MA gamma-BHC...	4.215	4.693	69294902	399.7E6	56.689	43.731
4)	MA Heptachlor	4.513	5.196	73312439	356.7E6	57.383	42.396 #
5)	MB Aldrin	4.760	5.502	69927253	332.2E6	56.255	41.293 #
6)	B beta-BHC	4.464	4.869	29794470	167.9E6	45.102	37.319
7)	B delta-BHC	4.668	5.086	70935946	386.6E6	56.754	42.624
8)	Heptachlo...	5.202	5.892	68388394	240.1E6	54.953	35.104 #
9)	A Endosulfan I	5.541	6.250	62558508	277.0E6	52.417	42.455
10)	B trans-Chl...	5.427	6.125	70332478	320.0E6	53.986	44.895
11)	B cis-Chlor...	5.486	6.197	69091116	294.2E6	53.102	42.111
12)	B 4,4'-DDE	5.649	6.356	139.9E6	588.3E6	117.339	90.279
13)	MA Dieldrin	5.784	6.506	144.8E6	600.5E6	111.897	87.933m
14)	MA Endrin	6.042	6.727	137.1E6	482.4E6	116.612	86.473 #
15)	B Endosulfa...	6.314	6.940	126.5E6	493.8E6	101.305	82.950
16)	A 4,4'-DDD	6.164	6.850	118.3E6	481.0E6	110.592	87.090
17)	MA 4,4'-DDT	6.404	7.147	127.4E6	460.3E6	109.879	85.068
18)	B Endrin al...	6.482	7.065	103.6E6	407.1E6	104.831	87.418
19)	B Endosulfa...	6.694	7.287	125.3E6	463.5E6	98.506	82.086
20)	A Methoxychlor	6.950	7.607	349.6E6	1080.9E6	508.217	413.923
21)	B Endrin ke...	7.188	7.761	149.6E6	513.6E6	98.119	79.914

(f)=RT Delta > 1/2 Window (#)=Amounts differ by > 25% (m)=manual int.

Data Path : Z:\pestpcbsrv\HPCHEM1\ECD_D\Data\PD093021\
 Data File : PD066000.D
 Signal(s) : Signal #1: ECD1A.ch Signal #2: ECD2B.ch
 Acq On : 30 Sep 2021 13:59
 Operator : AR\AJ
 Sample : M3877-17MSD
 Misc :
 ALS Vial : 21 Sample Multiplier: 1

Integration File signal 1: autoint1.e
 Integration File signal 2: autoint2.e
 Quant Time: Oct 05 01:58:38 2021
 Quant Method : Z:\pestpcbsrv\HPCHEM1\ECD_D\Method\PD092021CLP.M
 Quant Title : GC Extractables
 QLast Update : Mon Oct 04 09:46:55 2021
 Response via : Initial Calibration
 Integrator: ChemStation

Volume Inj. : 1 µl
 Signal #1 Phase : ZB-MR2 Signal #2 Phase: ZB-MR1
 Signal #1 Info : 30M x 0.32mm x0.2 Signal #2 Info : 30M x 0.32mm x 0.50µm



Instrument : ECD_D
 Client Sample Id : EW2L8MSD
 Manual Integrations APPROVED
 Ankitia
 10/6/2021 1:30:35 PM