

Data Path : Z:\pestpcbsrv\HPCHEM1\ECD_D\Data\PD093024\
 Data File : PD085823.D
 Signal(s) : Signal #1: ECD1A.ch Signal #2: ECD2B.ch
 Acq On : 01 Oct 2024 03:18
 Operator : AR\AJ
 Sample : P4019-22DL 2X
 Misc :
 ALS Vial : 23 Sample Multiplier: 1

Instrument :
 ECD_D
ClientSampleId :
 DDCJ8DL

Manual Integrations
APPROVED

Reviewed By :Abdul Mirza 10/01/2024
 Supervised By :Ankita Jodhani 10/01/2024

Integration File signal 1: autoint1.e
 Integration File signal 2: autoint2.e
 Quant Time: Sep 30 21:33:13 2024
 Quant Method : Z:\pestpcbsrv\HPCHEM1\ECD_D\Method\PD092724CLP.M
 Quant Title : GC Extractables
 QLast Update : Fri Sep 27 15:18:30 2024
 Response via : Initial Calibration
 Integrator: ChemStation

Volume Inj. : 1 µl
 Signal #1 Phase : ZB-MR1 Signal #2 Phase: ZB-MR2
 Signal #1 Info : 30M x 0.32mm x0.5 Signal #2 Info : 30M x 0.32mm x 0.25µm

Compound	RT#1	RT#2	Resp#1	Resp#2	ng/ml	ng/ml

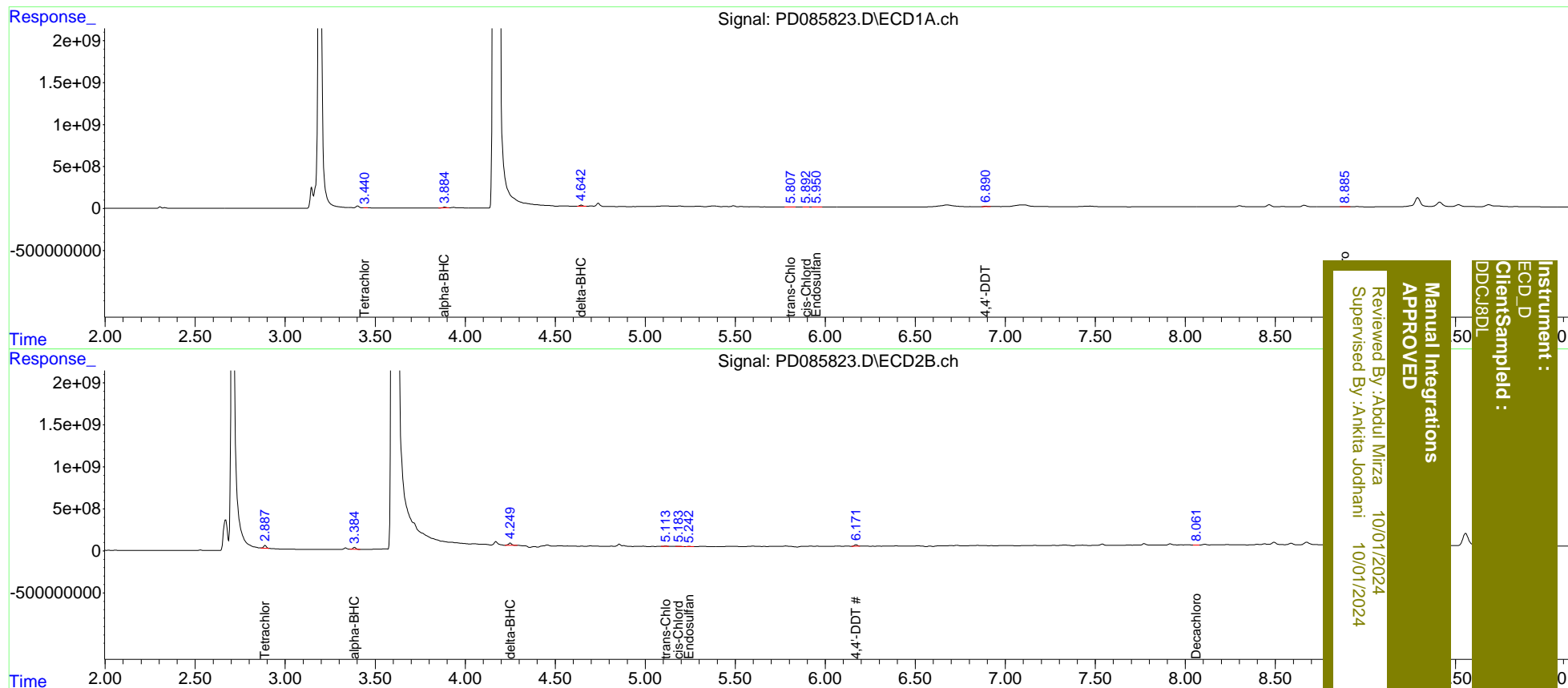
System Monitoring Compounds						
1) SA Tetrachlo...	3.440	2.887	5558578	365.4E6	5.306m	86.295m#
27) SA Decachlor...	8.885	8.061	14017573	9362395	9.509m	2.421m#
Target Compounds						
2) A alpha-BHC	3.886	3.386	115.7E6	262.7E6	63.582	40.677 #
7) B delta-BHC	4.644	4.250	159.0E6	344.2E6	89.852	57.726 #
9) A Endosulfan I	5.951	5.244	22549679	23147379	15.083	4.519 #
10) B trans-Chl...	5.807	5.113	7195151	34034492	4.821	6.287m#
11) B cis-Chlor...	5.892	5.183	11314374	34980046	7.255m	6.329m
17) MA 4,4'-DDT	6.890	6.170	61728179	208.1E6	55.541m	47.615m

(f)=RT Delta > 1/2 Window (#)=Amounts differ by > 25% (m)=manual int.

Data Path : Z:\pestpcbsrv\HPCHEM1\ECD_D\Data\PD093024\
 Data File : PD085823.D
 Signal(s) : Signal #1: ECD1A.ch Signal #2: ECD2B.ch
 Acq On : 01 Oct 2024 03:18
 Operator : AR\AJ
 Sample : P4019-22DL 2X
 Misc :
 ALS Vial : 23 Sample Multiplier: 1

Integration File signal 1: autoint1.e
 Integration File signal 2: autoint2.e
 Quant Time: Sep 30 21:33:13 2024
 Quant Method : Z:\pestpcbsrv\HPCHEM1\ECD_D\Method\PD092724CLP.M
 Quant Title : GC Extractables
 QLast Update : Fri Sep 27 15:18:30 2024
 Response via : Initial Calibration
 Integrator: ChemStation

Volume Inj. : 1 µl
 Signal #1 Phase : ZB-MR1 Signal #2 Phase: ZB-MR2
 Signal #1 Info : 30M x 0.32mm x 0.5 Signal #2 Info : 30M x 0.32mm x 0.25µm



Instrument : ECD_D
 Client/Sampled : DDCJ8DL
 Manual Integrations APPROVED
 Reviewed By :Abdul Mirza 10/01/2024
 Supervised By :Ankita Jodhani 10/01/2024