

Data Path : Z:\pestpcbsrv\HPCHEM1\ECD\_D\Data\PD100119\  
 Data File : PD055108.D  
 Signal(s) : Signal #1: ECD1A.ch Signal #2: ECD2B.ch  
 Acq On : 01 Oct 2019 22:28  
 Operator : SG\AJ  
 Sample : PB123457BS  
 Misc :  
 ALS Vial : 36 Sample Multiplier: 1

Instrument :  
 ECD\_D  
 ClientSampleId :  
 PLCS57

Integration File signal 1: autoint1.e  
 Integration File signal 2: autoint2.e  
 Quant Time: Oct 02 04:21:28 2019  
 Quant Method : Z:\pestpcbsrv\HPCHEM1\ECD\_D\Method\PD092319CLP.M  
 Quant Title : GC Extractables  
 QLast Update : Tue Sep 24 07:21:19 2019  
 Response via : Initial Calibration  
 Integrator: ChemStation

Volume Inj. : 1 µl  
 Signal #1 Phase : ZB-MR1 Signal #2 Phase: ZB-MR1  
 Signal #1 Info : 30M x 0.32mm x0.2 Signal #2 Info : 30M x 0.32mm x 0.50µm

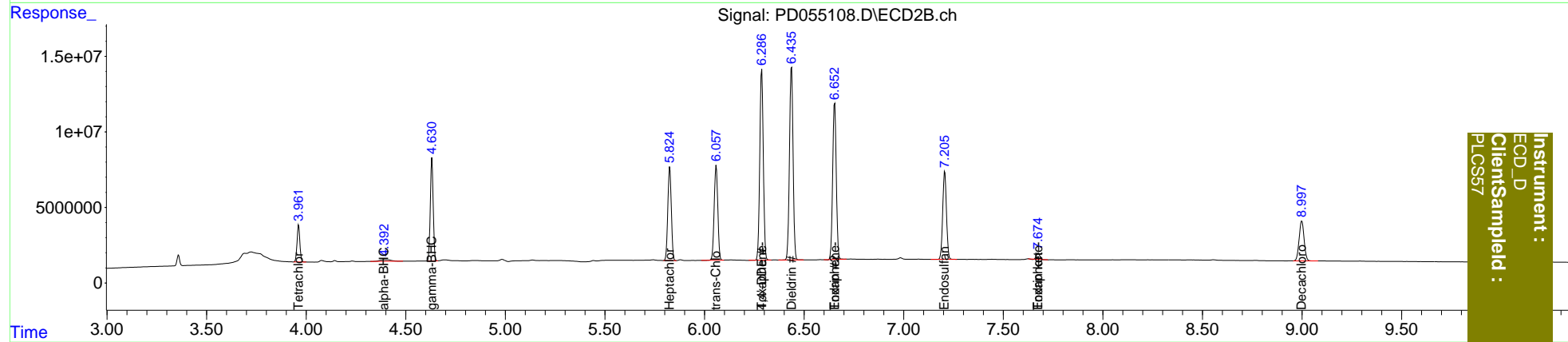
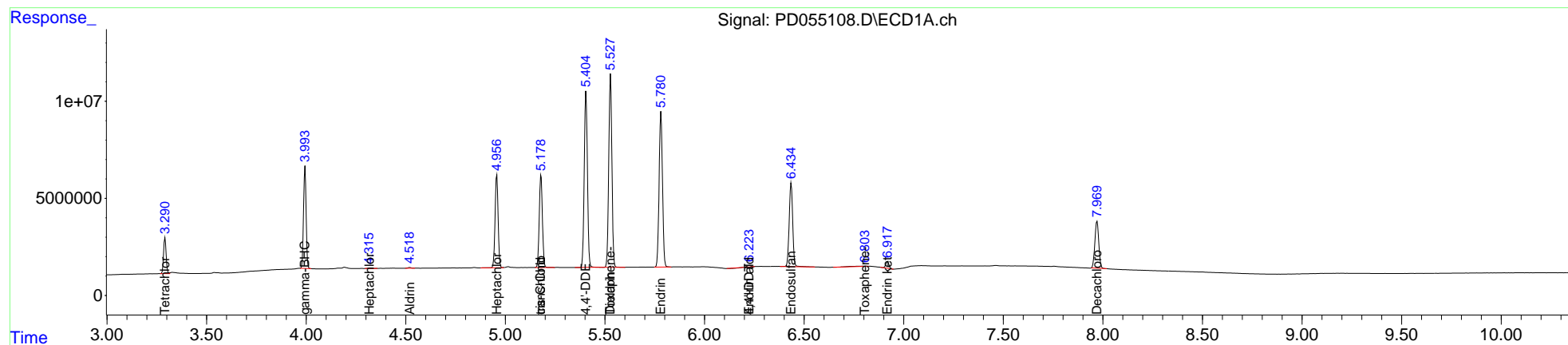
Compound	RT#1	RT#2	Resp#1	Resp#2	ng/ml	ng/ml
-----						
System Monitoring Compounds						
1) SA Tetrachlo...	3.291	3.962	16555211	24145676	21.761	23.529
2) SA Decachlor...	7.971	8.999	32711802	45588928	38.823	39.130
Target Compounds						
2) A alpha-BHC	0.000	4.394f	0	3942017	N.D.	2.734
3) MA gamma-BHC...	3.994	4.632	47432584	69080198	44.236	49.335
4) MA Heptachlor	4.317f	0.000	267948	0	0.290	N.D. #
5) MB Aldrin	4.520	0.000	372657	0	0.383	N.D. #
8) B Heptachlo...	4.957	5.826	50550298	74958787	55.089	57.002
10) B trans-Chl...	5.179	6.059	51881219	78483206	54.921	57.904
11) B cis-Chlor...	5.179f	0.000	51881219	0	56.684	N.D. #
12) B 4,4'-DDE	5.405	6.287	101.1E6	155.1E6	112.680	119.824
13) MA Dieldrin	5.528	6.437	108.5E6	161.0E6	110.229	115.408
14) MA Endrin	5.781	6.653	94259521	129.9E6	113.364	117.948
17) MA 4,4'-DDT	6.225f	0.000	603648	0	0.906	N.D. #
18) B Endrin al...	6.225	0.000	603648	0	0.830	N.D. #
19) B Endosulfa...	6.435	7.206	52486782	76378636	64.667	64.303
21) B Endrin ke...	6.919	7.676	3908490	4714855	4.327	3.578
22) Toxaphene-1	5.528	6.287	108.5E6	155.1E6	19395.118	23612.477
23) Toxaphene-2	0.000	6.653	0	129.9E6	N.D.	15369.895
26) Toxaphene-5	6.805	7.676	1091695	4714855	59.017	287.188 #
-----						

(f)=RT Delta > 1/2 Window (#)=Amounts differ by > 25% (m)=manual int.

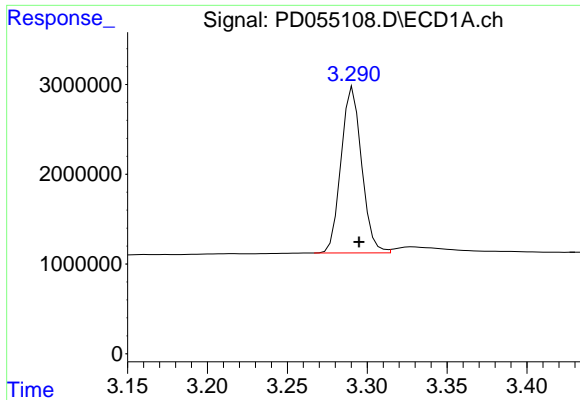
Data Path : Z:\pestpcbsrv\HPCHEM1\ECD\_D\Data\PD100119\  
 Data File : PD055108.D  
 Signal(s) : Signal #1: ECD1A.ch Signal #2: ECD2B.ch  
 Acq On : 01 Oct 2019 22:28  
 Operator : SG\AJ  
 Sample : PB123457BS  
 Misc :  
 ALS Vial : 36 Sample Multiplier: 1

Integration File signal 1: autoint1.e  
 Integration File signal 2: autoint2.e  
 Quant Time: Oct 02 04:21:28 2019  
 Quant Method : Z:\pestpcbsrv\HPCHEM1\ECD\_D\Method\PD092319CLP.M  
 Quant Title : GC Extractables  
 QLast Update : Tue Sep 24 07:21:19 2019  
 Response via : Initial Calibration  
 Integrator: ChemStation

Volume Inj. : 1 µl  
 Signal #1 Phase : ZB-MR2 Signal #2 Phase: ZB-MR1  
 Signal #1 Info : 30M x 0.32mm x0.2 Signal #2 Info : 30M x 0.32mm x 0.50µm



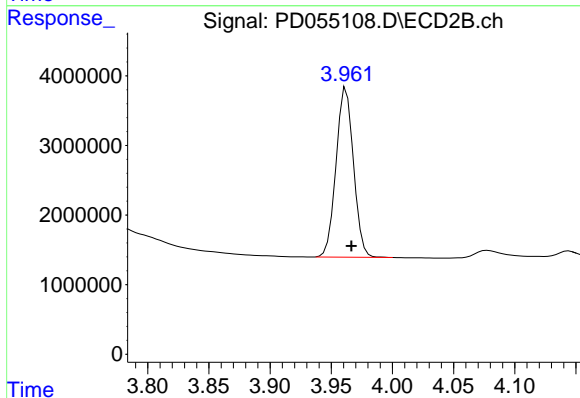
Instrument :  
 ECD\_D  
 ClientSampleId :  
 PLCS57



#1 Tetrachloro-m-xylene

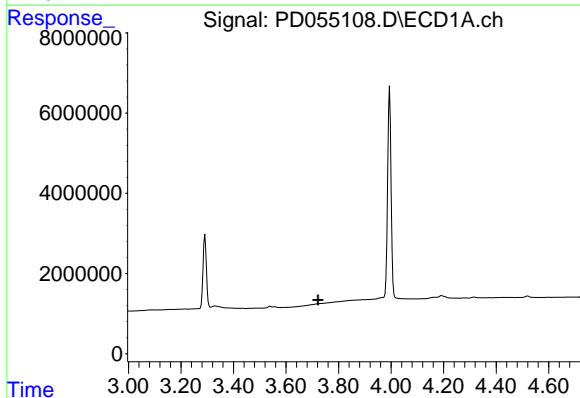
R.T.: 3.291 min  
Delta R.T.: -0.004 min  
Response: 16555211  
Conc: 21.76 ng/ml

Instrument :  
ECD\_D  
ClientSampled :  
PLCS57



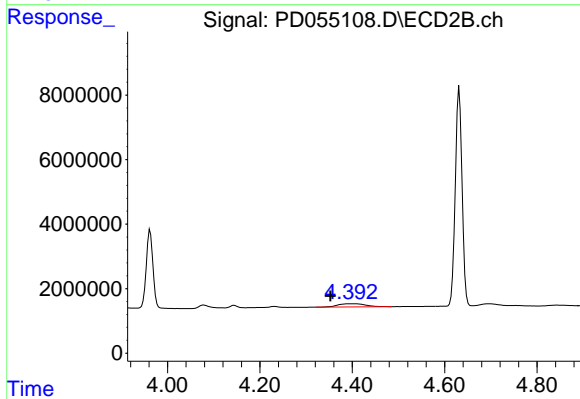
#1 Tetrachloro-m-xylene

R.T.: 3.962 min  
Delta R.T.: -0.004 min  
Response: 24145676  
Conc: 23.53 ng/ml



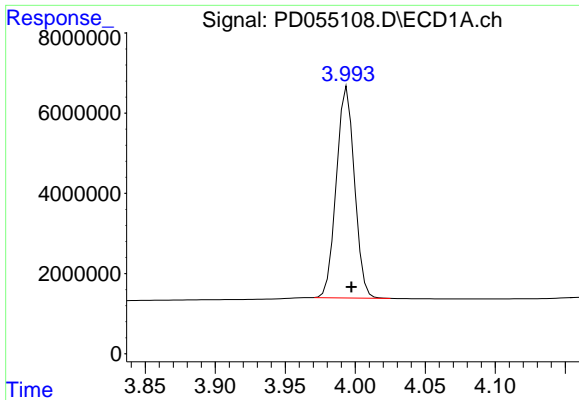
#2 alpha-BHC

R.T.: 0.000 min  
Exp R.T. : 3.722 min  
Response: 0  
Conc: N.D.



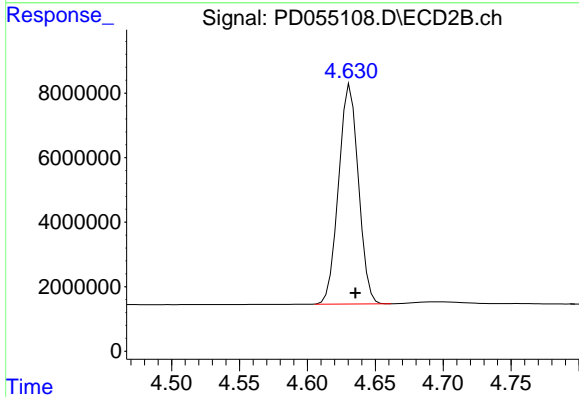
#2 alpha-BHC

R.T.: 4.394 min  
Delta R.T.: 0.041 min  
Response: 3942017  
Conc: 2.73 ng/ml

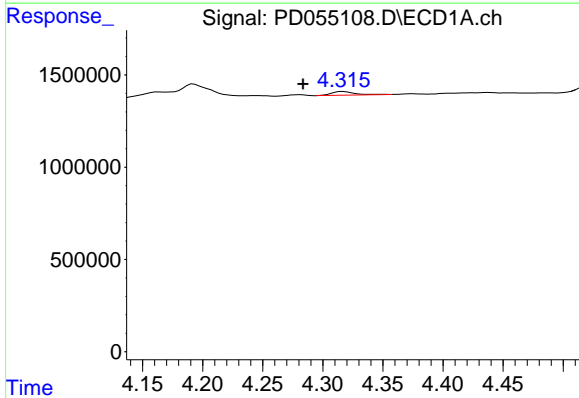


#3 gamma-BHC (Lindane)  
 R.T.: 3.994 min  
 Delta R.T.: -0.003 min  
 Response: 47432584  
 Conc: 44.24 ng/ml

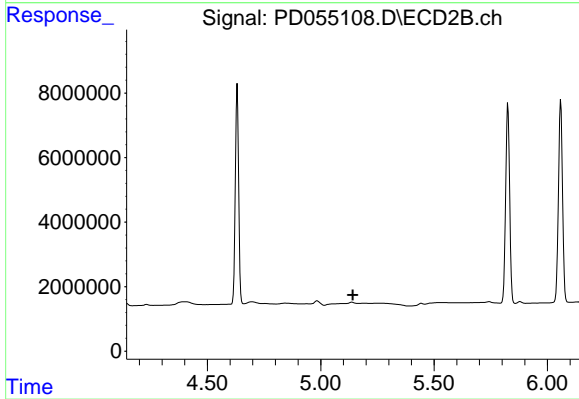
Instrument :  
 ECD\_D  
 ClientSampled :  
 PLCS57



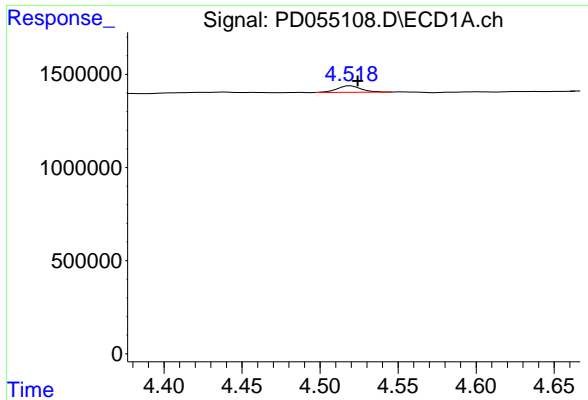
#3 gamma-BHC (Lindane)  
 R.T.: 4.632 min  
 Delta R.T.: -0.004 min  
 Response: 69080198  
 Conc: 49.33 ng/ml



#4 Heptachlor  
 R.T.: 4.317 min  
 Delta R.T.: 0.033 min  
 Response: 267948  
 Conc: 0.29 ng/ml

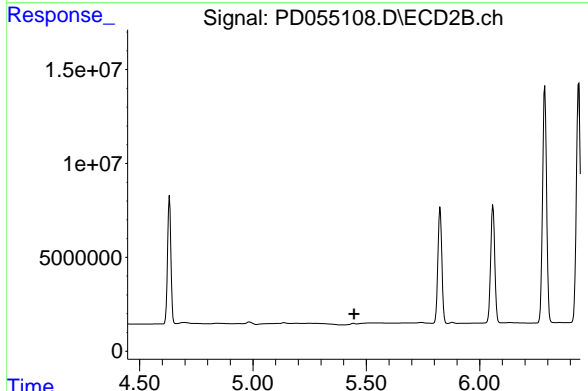


#4 Heptachlor  
 R.T.: 0.000 min  
 Exp R.T.: 5.142 min  
 Response: 0  
 Conc: N.D.

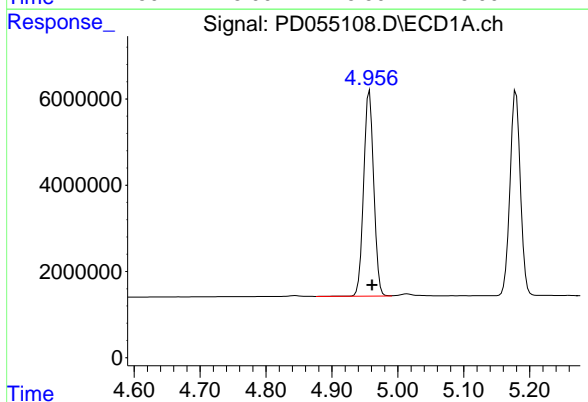


#5 Aldrin  
 R.T.: 4.520 min  
 Delta R.T.: -0.004 min  
 Response: 372657  
 Conc: 0.38 ng/ml

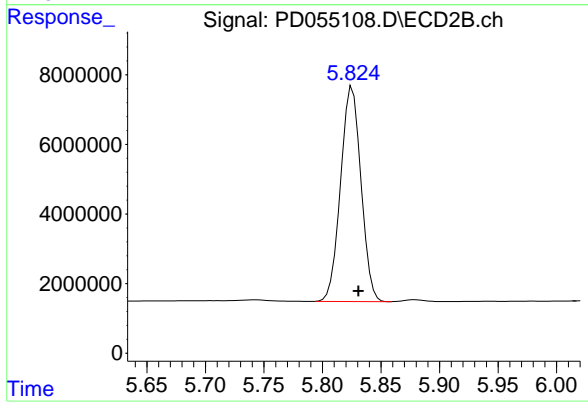
Instrument :  
 ECD\_D  
 ClientSampleId :  
 PLCS57



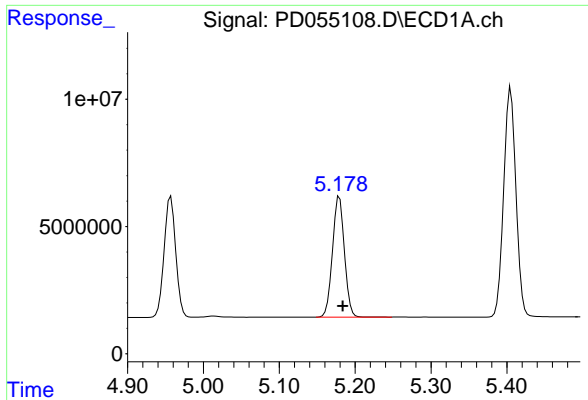
#5 Aldrin  
 R.T.: 0.000 min  
 Exp R.T. : 5.447 min  
 Response: 0  
 Conc: N.D.



#8 Heptachlor epoxide  
 R.T.: 4.957 min  
 Delta R.T.: -0.004 min  
 Response: 50550298  
 Conc: 55.09 ng/ml

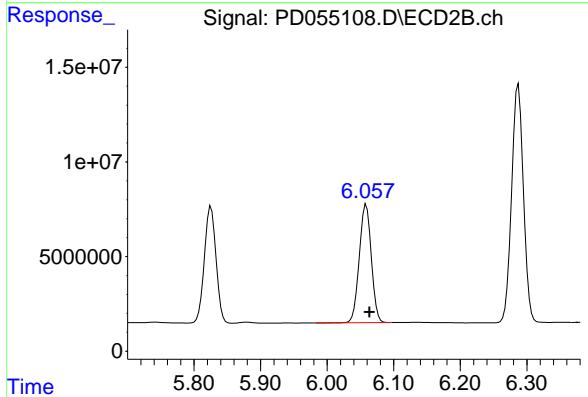


#8 Heptachlor epoxide  
 R.T.: 5.826 min  
 Delta R.T.: -0.005 min  
 Response: 74958787  
 Conc: 57.00 ng/ml

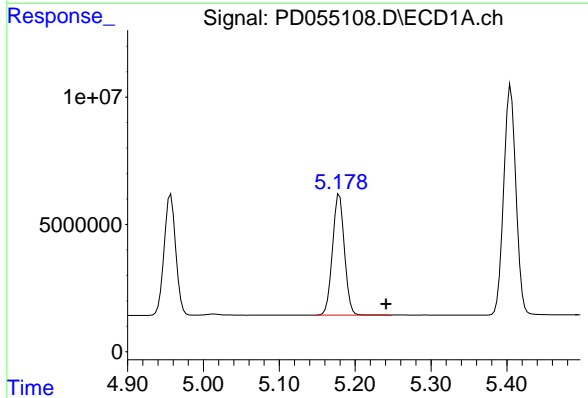


#10 trans-Chlordane  
 R.T.: 5.179 min  
 Delta R.T.: -0.004 min  
 Response: 51881219  
 Conc: 54.92 ng/ml

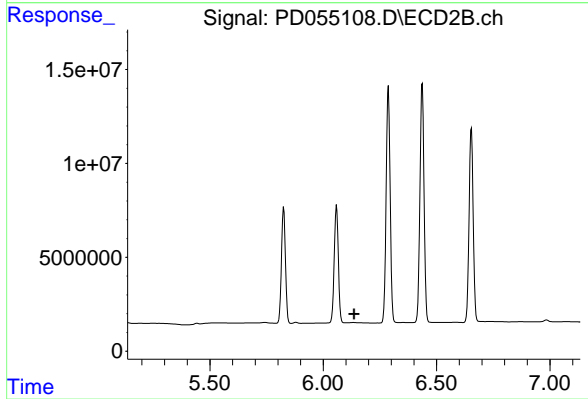
Instrument :  
 ECD\_D  
 ClientSampleId :  
 PLCS57



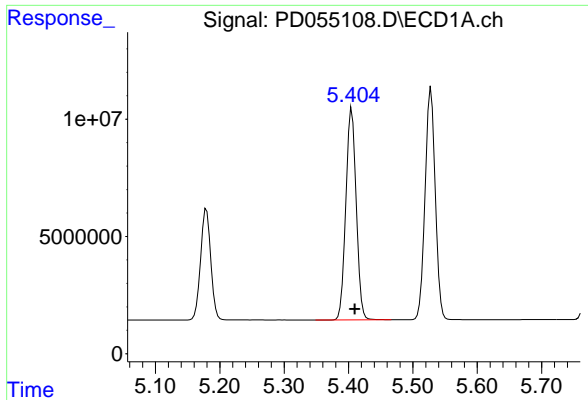
#10 trans-Chlordane  
 R.T.: 6.059 min  
 Delta R.T.: -0.005 min  
 Response: 78483206  
 Conc: 57.90 ng/ml



#11 cis-Chlordane  
 R.T.: 5.179 min  
 Delta R.T.: -0.061 min  
 Response: 51881219  
 Conc: 56.68 ng/ml

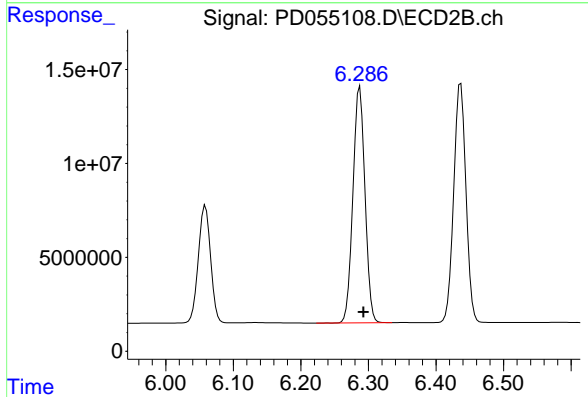


#11 cis-Chlordane  
 R.T.: 0.000 min  
 Exp R.T. : 6.136 min  
 Response: 0  
 Conc: N.D.

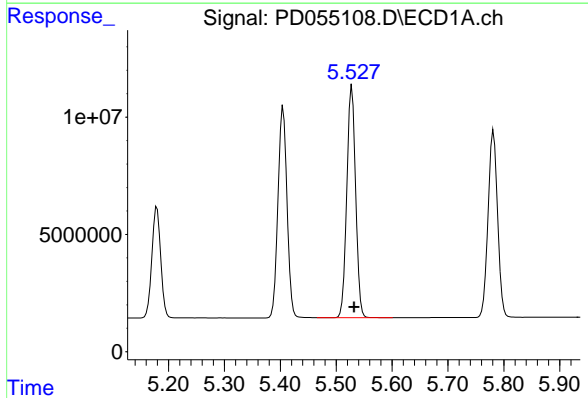


#12 4,4'-DDE  
 R.T.: 5.405 min  
 Delta R.T.: -0.005 min  
 Response: 101100159  
 Conc: 112.68 ng/ml

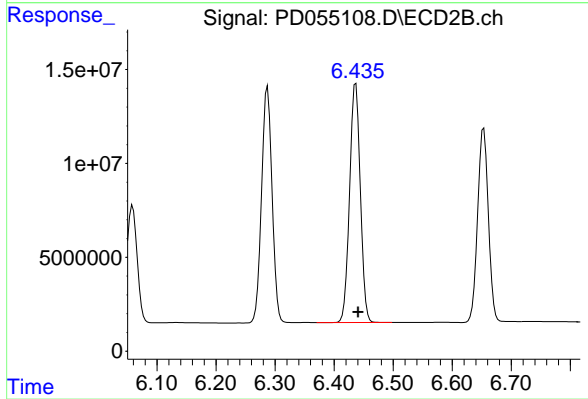
Instrument :  
 ECD\_D  
 ClientSampleId :  
 PLCS57



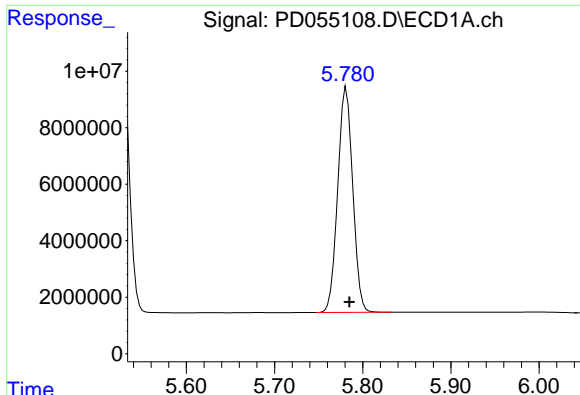
#12 4,4'-DDE  
 R.T.: 6.287 min  
 Delta R.T.: -0.005 min  
 Response: 155116959  
 Conc: 119.82 ng/ml



#13 Dieldrin  
 R.T.: 5.528 min  
 Delta R.T.: -0.004 min  
 Response: 108501094  
 Conc: 110.23 ng/ml



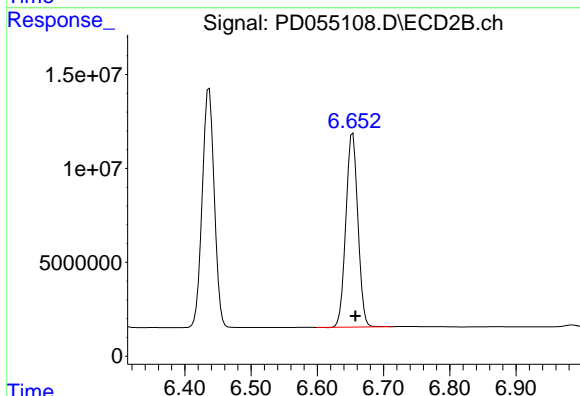
#13 Dieldrin  
 R.T.: 6.437 min  
 Delta R.T.: -0.004 min  
 Response: 161039554  
 Conc: 115.41 ng/ml



#14 Endrin

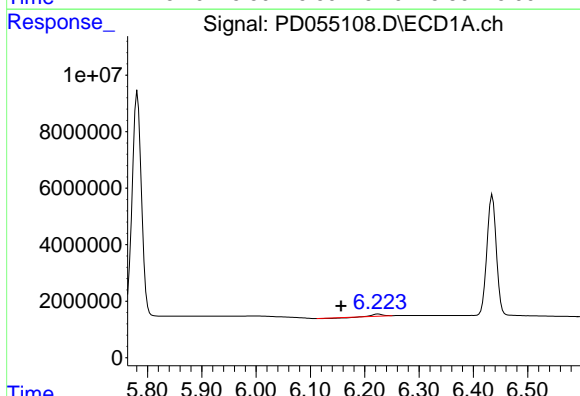
R.T.: 5.781 min  
 Delta R.T.: -0.004 min  
 Response: 94259521  
 Conc: 113.36 ng/ml

Instrument :  
 ECD\_D  
 ClientSampleId :  
 PLCS57



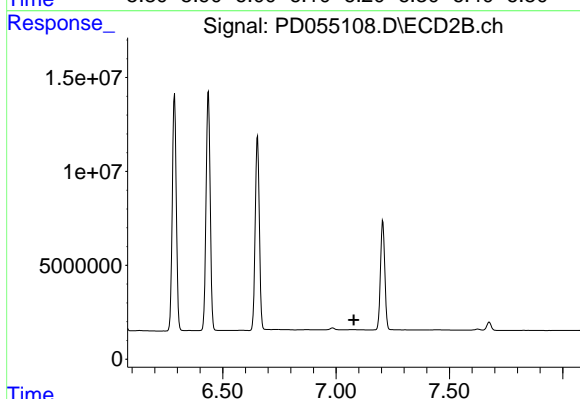
#14 Endrin

R.T.: 6.653 min  
 Delta R.T.: -0.004 min  
 Response: 129904785  
 Conc: 117.95 ng/ml



#17 4,4'-DDT

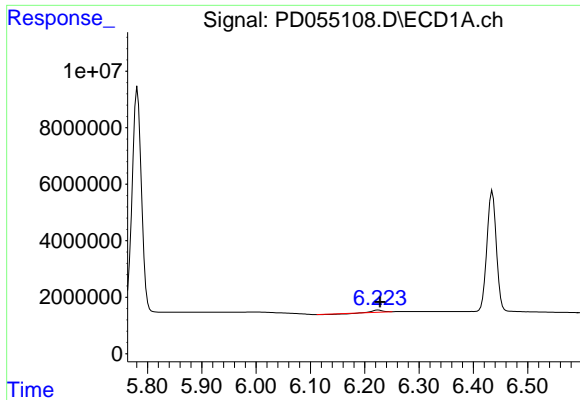
R.T.: 6.225 min  
 Delta R.T.: 0.068 min  
 Response: 603648  
 Conc: 0.91 ng/ml



#17 4,4'-DDT

R.T.: 0.000 min  
 Exp R.T. : 7.078 min  
 Response: 0  
 Conc: N.D.

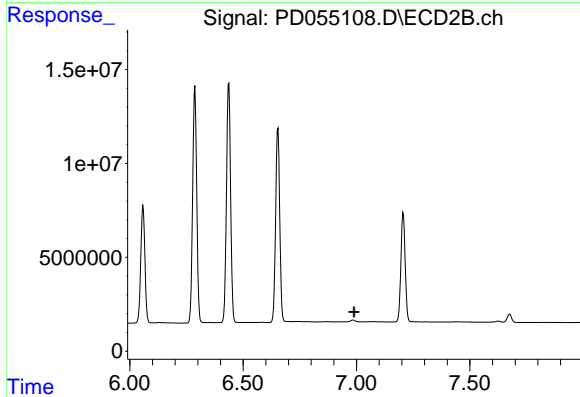




#18 Endrin aldehyde

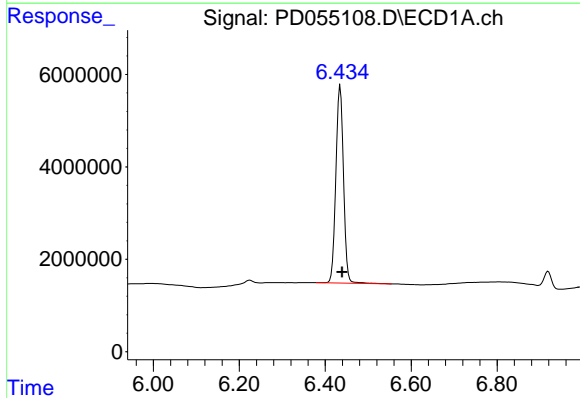
R.T.: 6.225 min  
 Delta R.T.: -0.003 min  
 Response: 603648  
 Conc: 0.83 ng/ml

Instrument :  
 ECD\_D  
 ClientSampled :  
 PLCS57



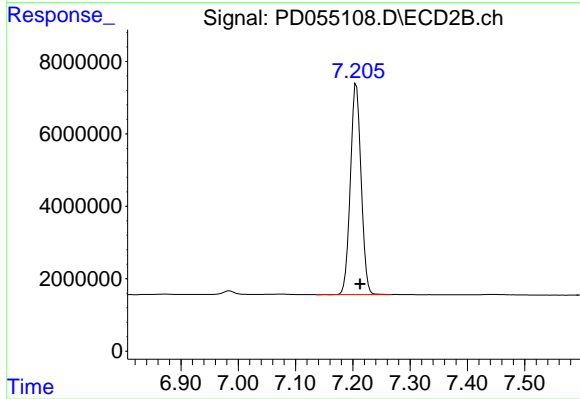
#18 Endrin aldehyde

R.T.: 0.000 min  
 Exp R.T. : 6.989 min  
 Response: 0  
 Conc: N.D.



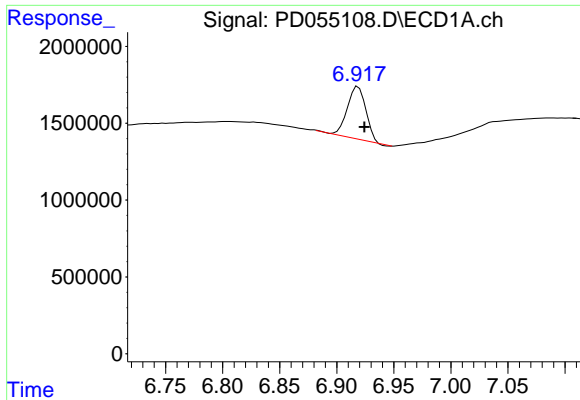
#19 Endosulfan Sulfate

R.T.: 6.435 min  
 Delta R.T.: -0.004 min  
 Response: 52486782  
 Conc: 64.67 ng/ml



#19 Endosulfan Sulfate

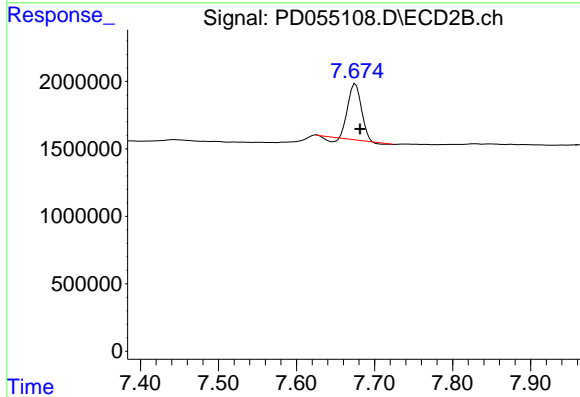
R.T.: 7.206 min  
 Delta R.T.: -0.006 min  
 Response: 76378636  
 Conc: 64.30 ng/ml



#21 Endrin ketone

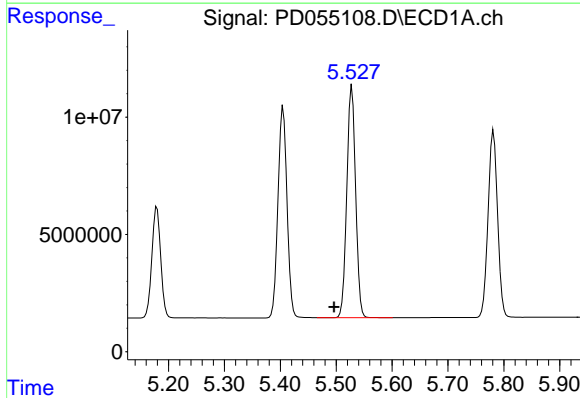
R.T.: 6.919 min  
 Delta R.T.: -0.005 min  
 Response: 3908490  
 Conc: 4.33 ng/ml

Instrument :  
 ECD\_D  
 ClientSampleId :  
 PLCS57



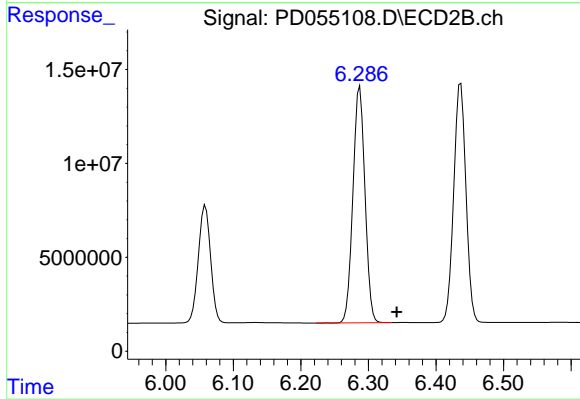
#21 Endrin ketone

R.T.: 7.676 min  
 Delta R.T.: -0.006 min  
 Response: 4714855  
 Conc: 3.58 ng/ml



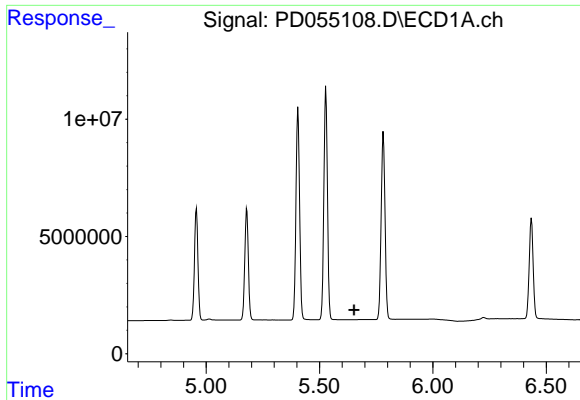
#22 Toxaphene-1

R.T.: 5.528 min  
 Delta R.T.: 0.032 min  
 Response: 108501094  
 Conc: 19395.12 ng/ml



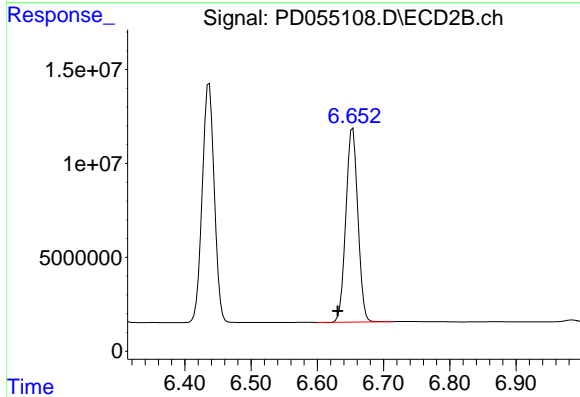
#22 Toxaphene-1

R.T.: 6.287 min  
 Delta R.T.: -0.055 min  
 Response: 155116959  
 Conc: 23612.48 ng/ml

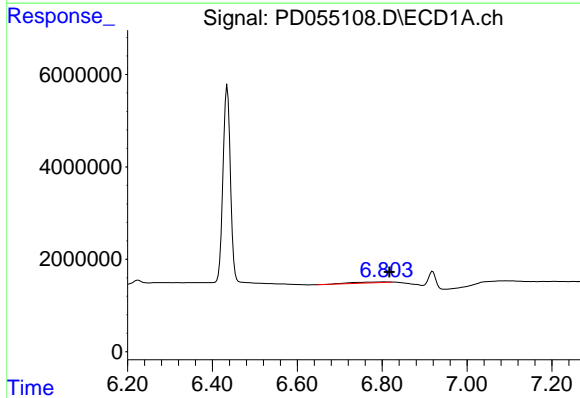


#23 Toxaphene-2  
 R.T.: 0.000 min  
 Exp R.T.: 5.652 min  
 Response: 0  
 Conc: N.D.

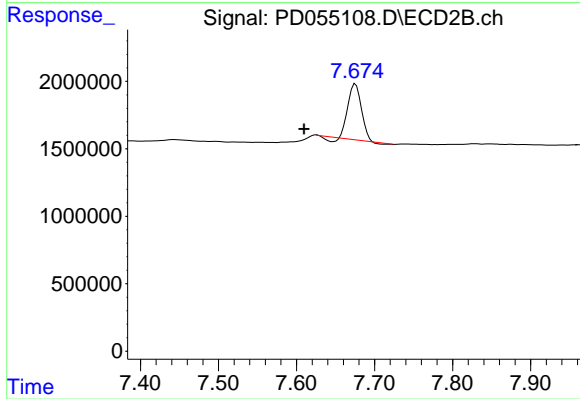
Instrument :  
 ECD\_D  
 ClientSampled :  
 PLCS57



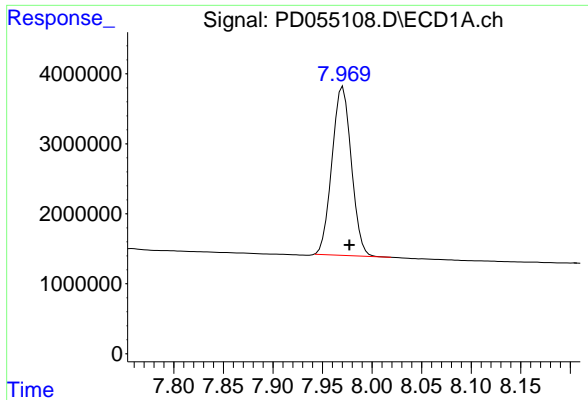
#23 Toxaphene-2  
 R.T.: 6.653 min  
 Delta R.T.: 0.023 min  
 Response: 129904785  
 Conc: 15369.90 ng/ml



#26 Toxaphene-5  
 R.T.: 6.805 min  
 Delta R.T.: -0.012 min  
 Response: 1091695  
 Conc: 59.02 ng/ml



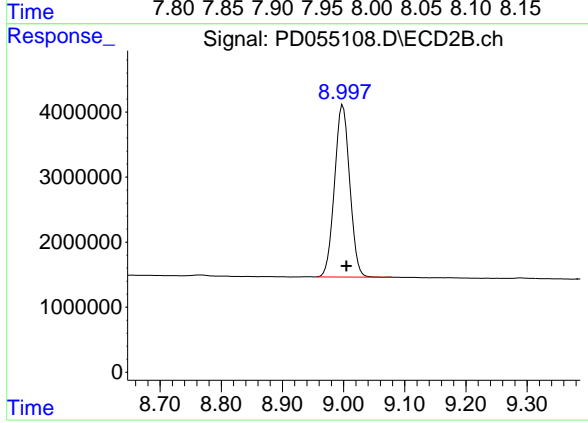
#26 Toxaphene-5  
 R.T.: 7.676 min  
 Delta R.T.: 0.066 min  
 Response: 4714855  
 Conc: 287.19 ng/ml



#27 Decachlorobiphenyl

R.T.: 7.971 min  
Delta R.T.: -0.006 min  
Response: 32711802  
Conc: 38.82 ng/ml

Instrument :  
ECD\_D  
ClientSampleId :  
PLCS57



#27 Decachlorobiphenyl

R.T.: 8.999 min  
Delta R.T.: -0.006 min  
Response: 45588928  
Conc: 39.13 ng/ml