

Data Path : Z:\pestpcbsrv\HPCHEM1\ECD_D\Data\PD100219\
 Data File : PD055136.D
 Signal(s) : Signal #1: ECD1A.ch Signal #2: ECD2B.ch
 Acq On : 02 Oct 2019 09:39
 Operator : SG\AJ
 Sample : PEM26
 Misc :
 ALS Vial : 3 Sample Multiplier: 1

Instrument :
 ECD_D
 ClientSampleId :
 PEM26

Integration File signal 1: autoint1.e
 Integration File signal 2: autoint2.e
 Quant Time: Oct 03 01:12:51 2019
 Quant Method : Z:\pestpcbsrv\HPCHEM1\ECD_D\Method\PD092319CLP.M
 Quant Title : GC Extractables
 QLast Update : Tue Sep 24 07:21:19 2019
 Response via : Initial Calibration
 Integrator: ChemStation

Volume Inj. : 1 µl
 Signal #1 Phase : ZB-MR2 Signal #2 Phase: ZB-MR1
 Signal #1 Info : 30M x 0.32mm x0.2 Signal #2 Info : 30M x 0.32mm x 0.50µm

Compound	RT#1	RT#2	Resp#1	Resp#2	ng/ml	ng/ml

System Monitoring Compounds						
1) SA Tetrachlo...	3.292	3.962	16439971	23217390	21.610	22.625
27) SA Decachlor...	7.971	8.998	18117295	23729850	21.502	20.368
Target Compounds						
2) A alpha-BHC	3.719	4.348	11887248	16600968	10.706	11.516
3) MA gamma-BHC...	3.994	4.631	11088278	15508566	10.341	11.076
4) MA Heptachlor	4.244f	0.000	5320168	0	5.751	N.D. #
6) B beta-BHC	4.244	4.799	5320168	7671747	11.372	11.507
8) B Heptachlo...	4.964	0.000	823165	0	0.897	N.D. #
13) MA Dieldrin	5.507	0.000	222664	0	0.226	N.D. #
14) MA Endrin	5.782	6.654	46752393	62549735	56.228	56.792
16) A 4,4'-DDD	5.918	6.775	1551029	2955769	2.138	2.723 #
17) MA 4,4'-DDT	6.152	7.073	78004543	124.4E6	117.033	113.649
18) B Endrin al...	6.225	0.000	708675	0	0.974	N.D. #
19) B Endosulfa...	6.377f	0.000	111572	0	0.137	N.D. #
20) A Methoxychlor	6.701	7.529	96898407	164.3E6	273.295	263.437
21) B Endrin ke...	6.918	7.675	1448055	1352837	1.603	1.027 #
22) Toxaphene-1	5.507	0.000	222664	0	39.802	N.D. #
23) Toxaphene-2	5.626	6.654	719262	62549735	124.105	7400.673 #
24) Toxaphene-3	5.918	7.073	1551029	124.4E6	310.479	10147.992 #
25) Toxaphene-4	6.152	7.073	78004543	124.4E6	5157.479	3694.180 #
26) Toxaphene-5	6.773	7.675	394166	1352837	21.308	82.403 #

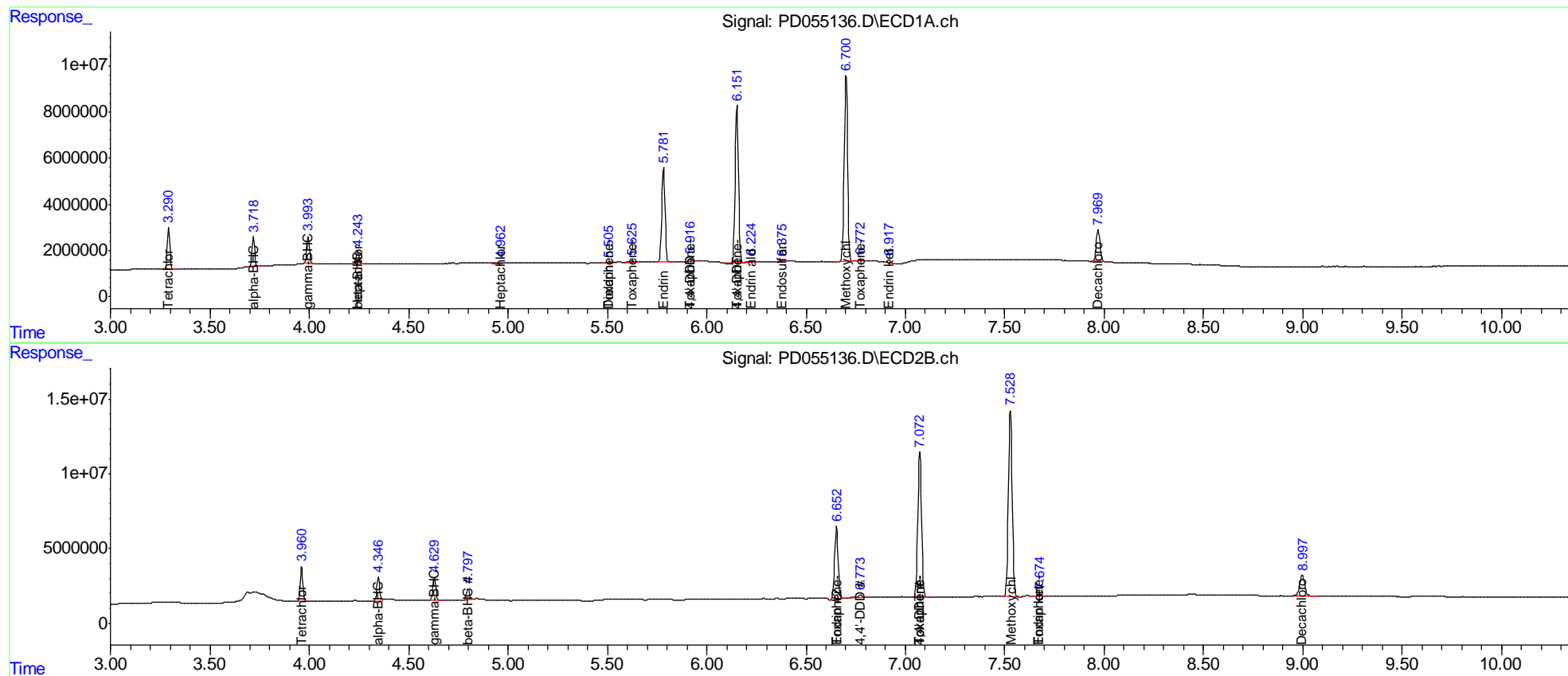
(f)=RT Delta > 1/2 Window (#)=Amounts differ by > 25% (m)=manual int.

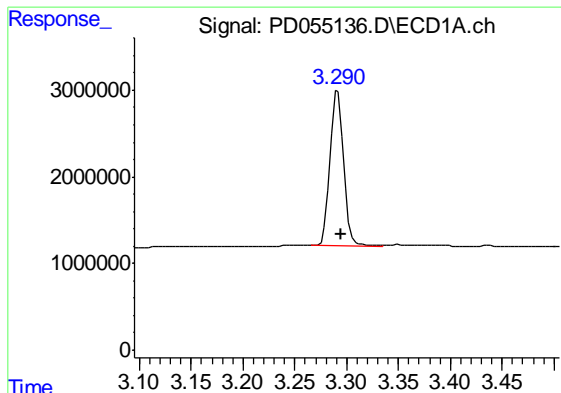
Data Path : Z:\pestpcbsrv\HPCHEM1\ECD_D\Data\PD100219\
 Data File : PD055136.D
 Signal(s) : Signal #1: ECD1A.ch Signal #2: ECD2B.ch
 Acq On : 02 Oct 2019 09:39
 Operator : SG\AJ
 Sample : PEM26
 Misc :
 ALS Vial : 3 Sample Multiplier: 1

Instrument :
 ECD_D
 Client Sampled :
 PEM26

Integration File signal 1: autoint1.e
 Integration File signal 2: autoint2.e
 Quant Time: Oct 03 01:12:51 2019
 Quant Method : Z:\pestpcbsrv\HPCHEM1\ECD_D\Method\PD092319CLP.M
 Quant Title : GC Extractables
 QLast Update : Tue Sep 24 07:21:19 2019
 Response via : Initial Calibration
 Integrator: ChemStation

Volume Inj. : 1 µl
 Signal #1 Phase : ZB-MR2 Signal #2 Phase: ZB-MR1
 Signal #1 Info : 30M x 0.32mm x0.2 Signal #2 Info : 30M x 0.32mm x 0.50µm

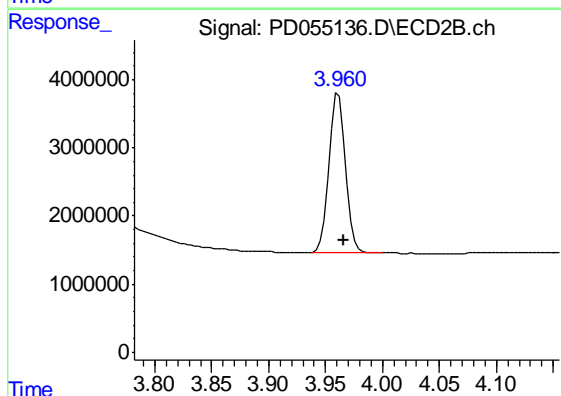




#1 Tetrachloro-m-xylene

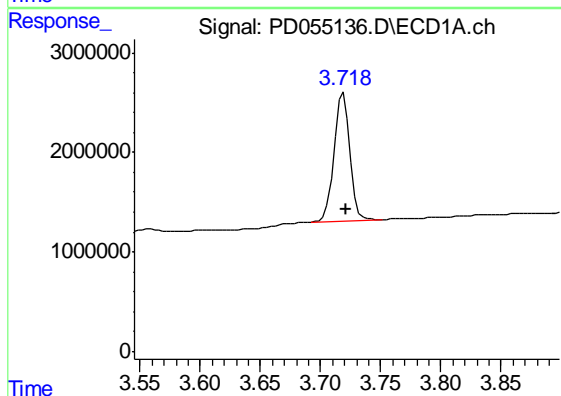
R.T.: 3.292 min
Delta R.T.: -0.003 min
Response: 16439971
Conc: 21.61 ng/ml

Instrument :
ECD_D
ClientSampleId :
PEM26



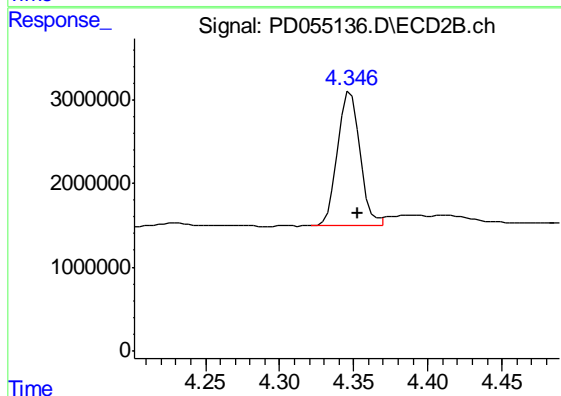
#1 Tetrachloro-m-xylene

R.T.: 3.962 min
Delta R.T.: -0.005 min
Response: 23217390
Conc: 22.62 ng/ml



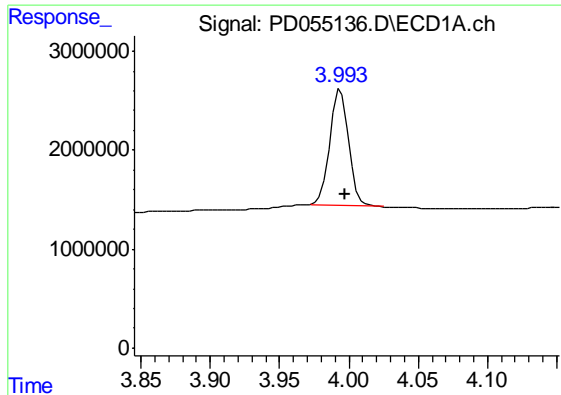
#2 alpha-BHC

R.T.: 3.719 min
Delta R.T.: -0.003 min
Response: 11887248
Conc: 10.71 ng/ml



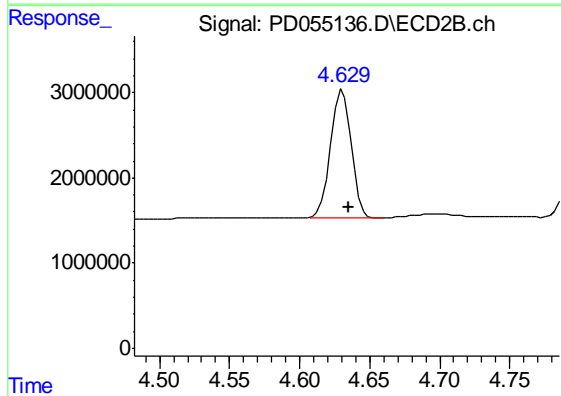
#2 alpha-BHC

R.T.: 4.348 min
Delta R.T.: -0.005 min
Response: 16600968
Conc: 11.52 ng/ml

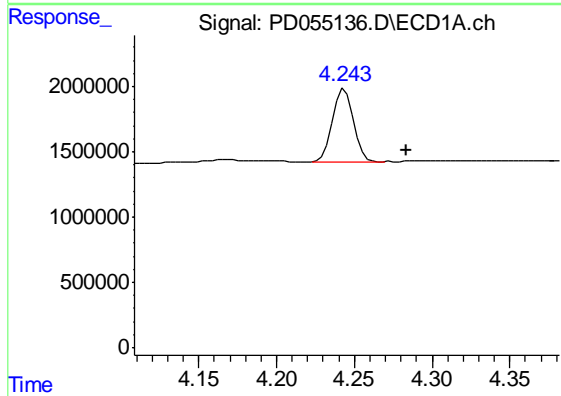


#3 gamma-BHC (Lindane)
 R.T.: 3.994 min
 Delta R.T.: -0.003 min
 Response: 11088278
 Conc: 10.34 ng/ml

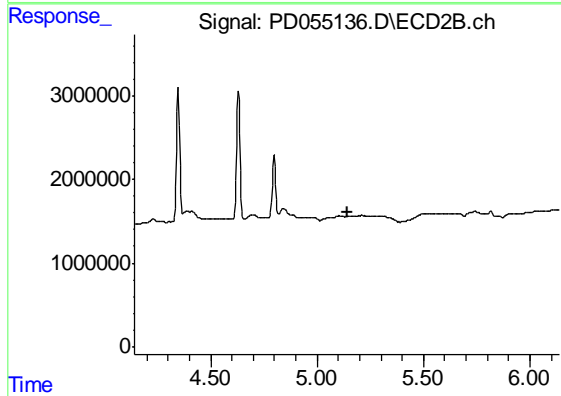
Instrument :
 ECD_D
 ClientSampleId :
 PEM26



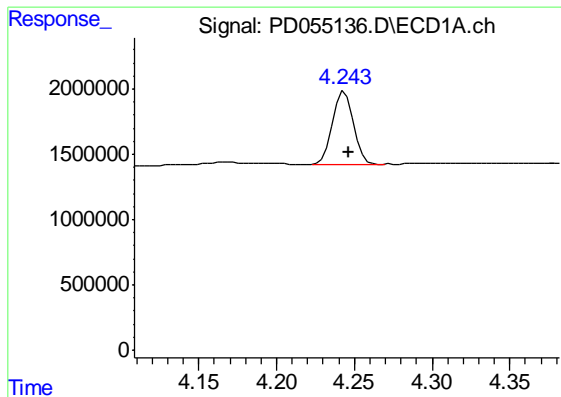
#3 gamma-BHC (Lindane)
 R.T.: 4.631 min
 Delta R.T.: -0.005 min
 Response: 15508566
 Conc: 11.08 ng/ml



#4 Heptachlor
 R.T.: 4.244 min
 Delta R.T.: -0.040 min
 Response: 5320168
 Conc: 5.75 ng/ml



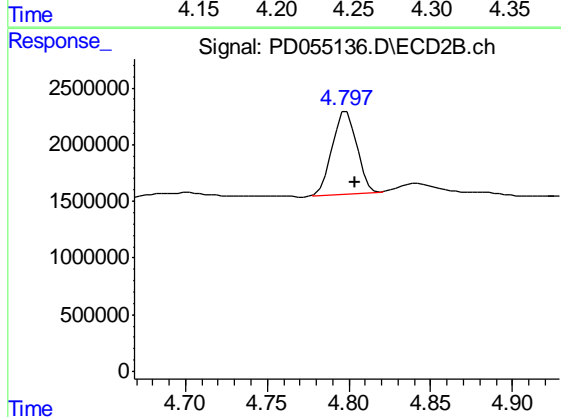
#4 Heptachlor
 R.T.: 0.000 min
 Exp R.T. : 5.142 min
 Response: 0
 Conc: N.D.



#6 beta-BHC

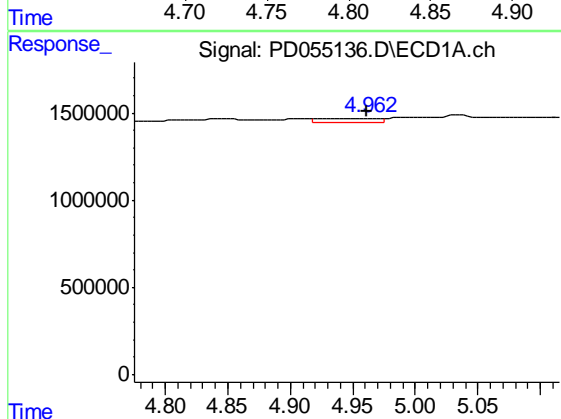
R.T.: 4.244 min
 Delta R.T.: -0.003 min
 Response: 5320168
 Conc: 11.37 ng/ml

Instrument :
 ECD_D
 ClientSampled :
 PEM26



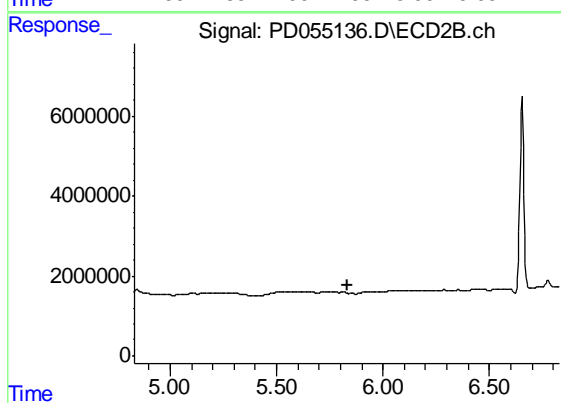
#6 beta-BHC

R.T.: 4.799 min
 Delta R.T.: -0.005 min
 Response: 7671747
 Conc: 11.51 ng/ml



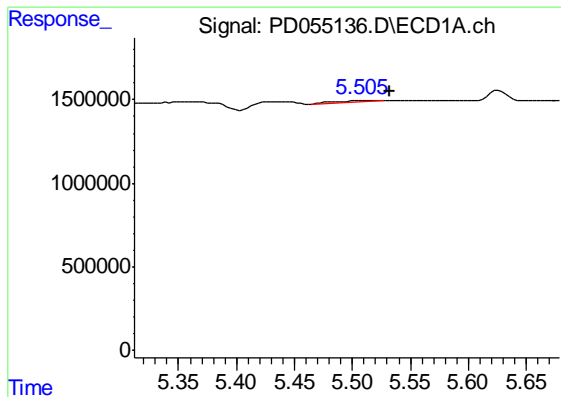
#8 Heptachlor epoxide

R.T.: 4.964 min
 Delta R.T.: 0.003 min
 Response: 823165
 Conc: 0.90 ng/ml



#8 Heptachlor epoxide

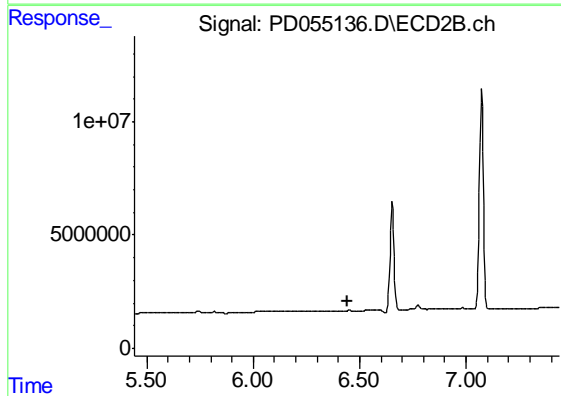
R.T.: 0.000 min
 Exp R.T. : 5.831 min
 Response: 0
 Conc: N.D.



#13 Dieldrin

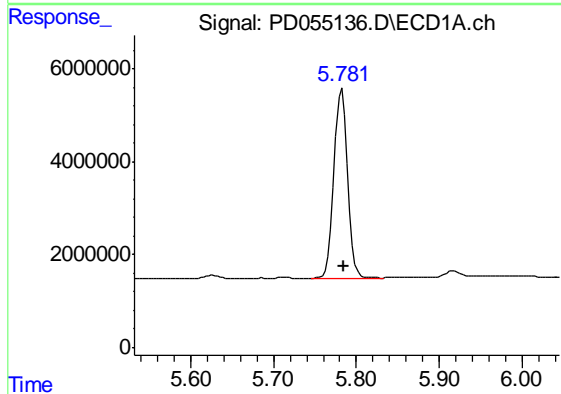
R.T.: 5.507 min
 Delta R.T.: -0.025 min
 Response: 222664
 Conc: 0.23 ng/ml

Instrument :
 ECD_D
 ClientSampled :
 PEM26



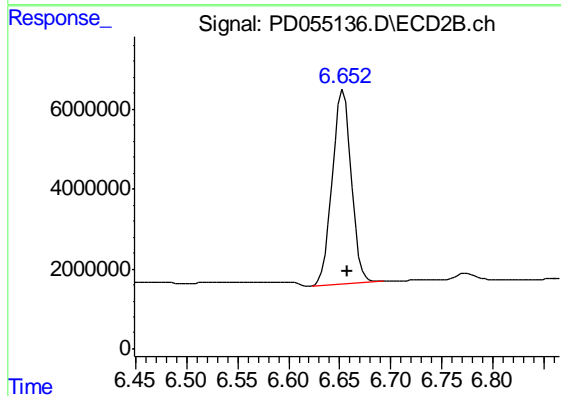
#13 Dieldrin

R.T.: 0.000 min
 Exp R.T. : 6.441 min
 Response: 0
 Conc: N.D.



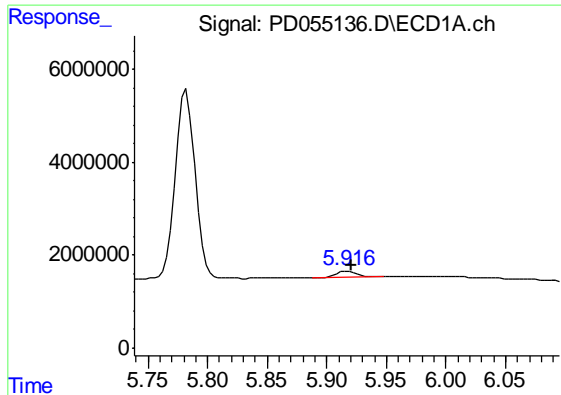
#14 Endrin

R.T.: 5.782 min
 Delta R.T.: -0.003 min
 Response: 46752393
 Conc: 56.23 ng/ml



#14 Endrin

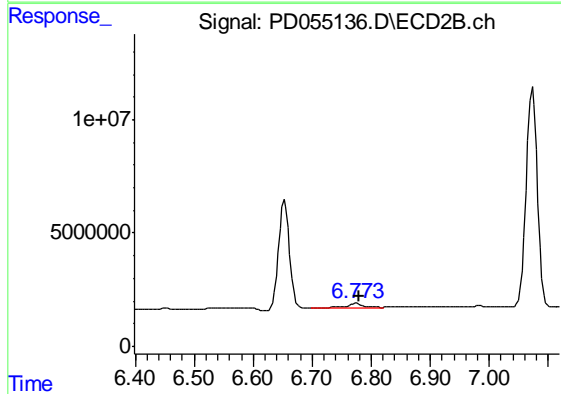
R.T.: 6.654 min
 Delta R.T.: -0.004 min
 Response: 62549735
 Conc: 56.79 ng/ml



#16 4,4'-DDD

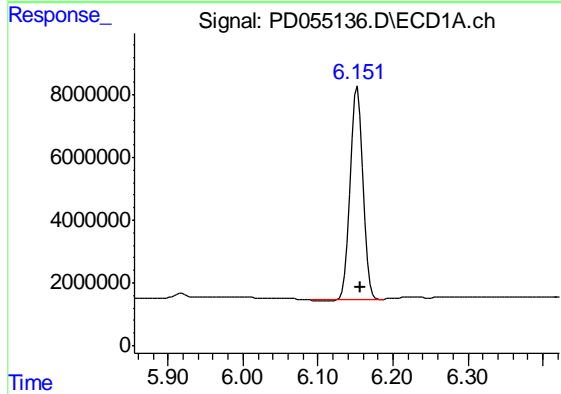
R.T.: 5.918 min
 Delta R.T.: -0.003 min
 Response: 1551029
 Conc: 2.14 ng/ml

Instrument :
 ECD_D
 ClientSampleId :
 PEM26



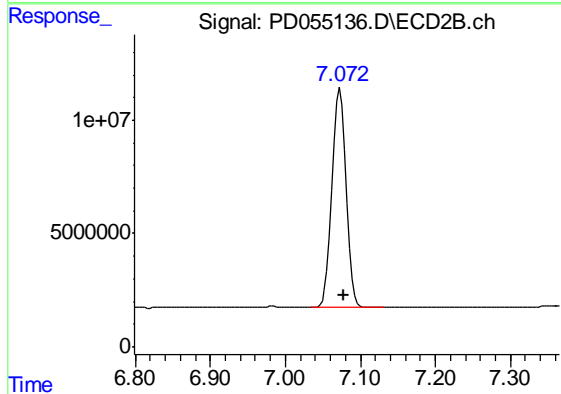
#16 4,4'-DDD

R.T.: 6.775 min
 Delta R.T.: -0.005 min
 Response: 2955769
 Conc: 2.72 ng/ml



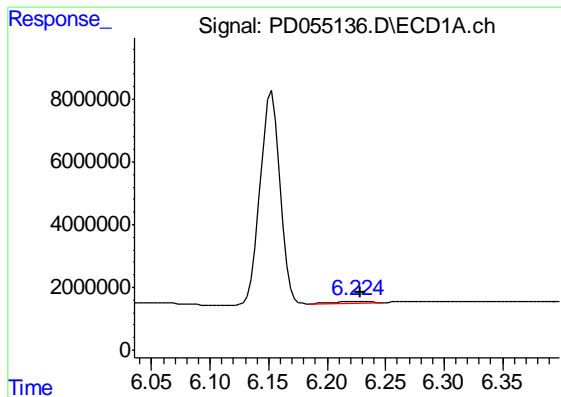
#17 4,4'-DDT

R.T.: 6.152 min
 Delta R.T.: -0.004 min
 Response: 78004543
 Conc: 117.03 ng/ml



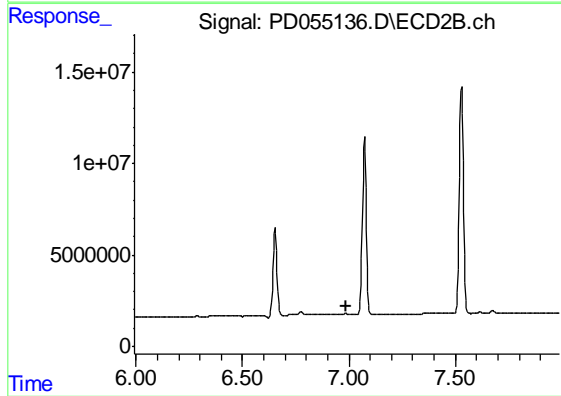
#17 4,4'-DDT

R.T.: 7.073 min
 Delta R.T.: -0.005 min
 Response: 124411714
 Conc: 113.65 ng/ml

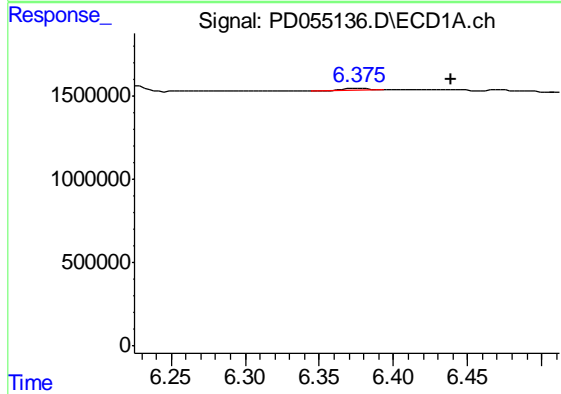


#18 Endrin aldehyde
 R.T.: 6.225 min
 Delta R.T.: -0.003 min
 Response: 708675
 Conc: 0.97 ng/ml

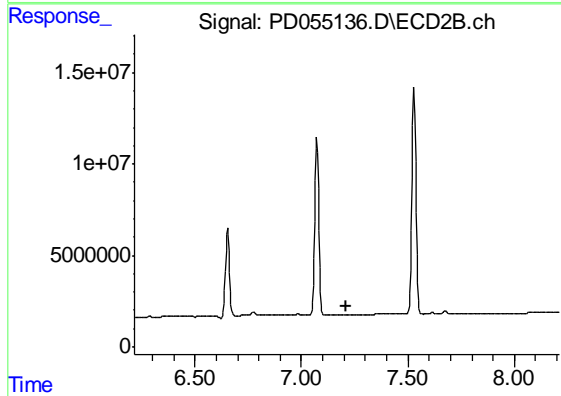
Instrument :
 ECD_D
 ClientSampled :
 PEM26



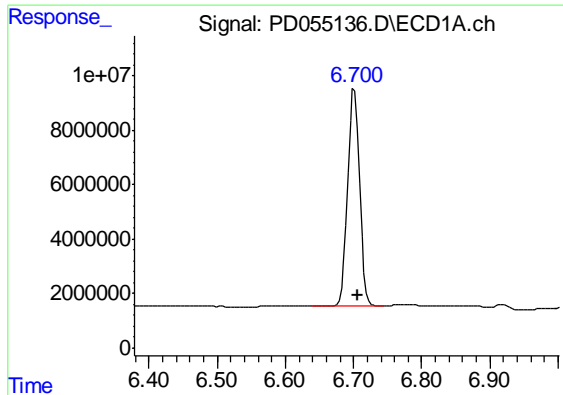
#18 Endrin aldehyde
 R.T.: 0.000 min
 Exp R.T. : 6.989 min
 Response: 0
 Conc: N.D.



#19 Endosulfan Sulfate
 R.T.: 6.377 min
 Delta R.T.: -0.062 min
 Response: 111572
 Conc: 0.14 ng/ml



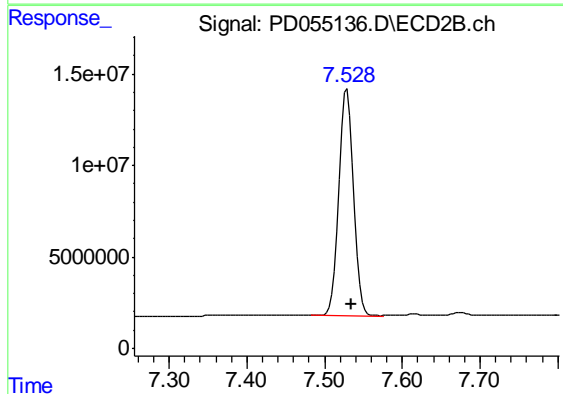
#19 Endosulfan Sulfate
 R.T.: 0.000 min
 Exp R.T. : 7.212 min
 Response: 0
 Conc: N.D.



#20 Methoxychlor

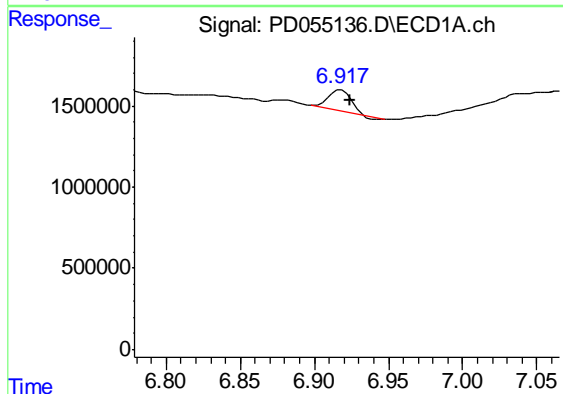
R.T.: 6.701 min
 Delta R.T.: -0.005 min
 Response: 96898407
 Conc: 273.30 ng/ml

Instrument :
 ECD_D
 ClientSampleId :
 PEM26



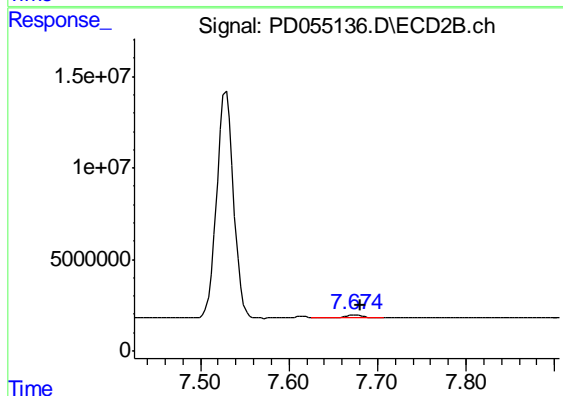
#20 Methoxychlor

R.T.: 7.529 min
 Delta R.T.: -0.006 min
 Response: 164323137
 Conc: 263.44 ng/ml



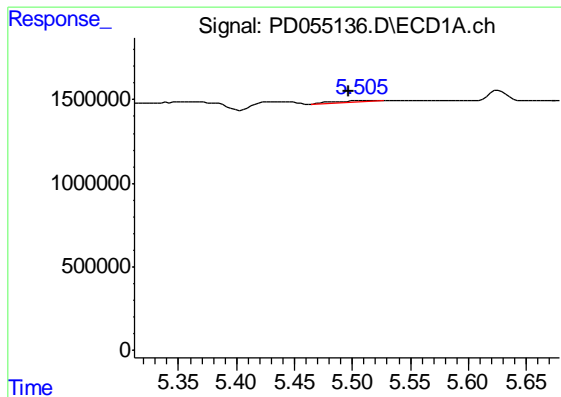
#21 Endrin ketone

R.T.: 6.918 min
 Delta R.T.: -0.006 min
 Response: 1448055
 Conc: 1.60 ng/ml



#21 Endrin ketone

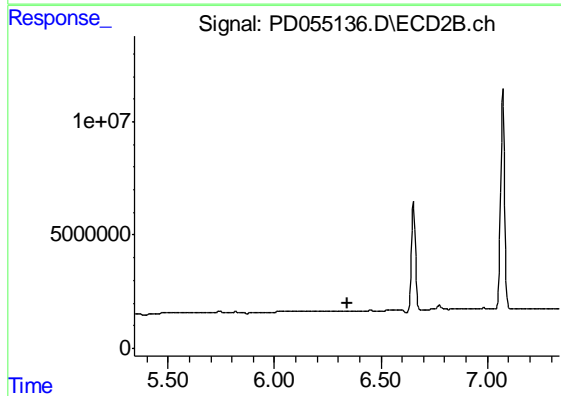
R.T.: 7.675 min
 Delta R.T.: -0.006 min
 Response: 1352837
 Conc: 1.03 ng/ml



#22 Toxaphene-1

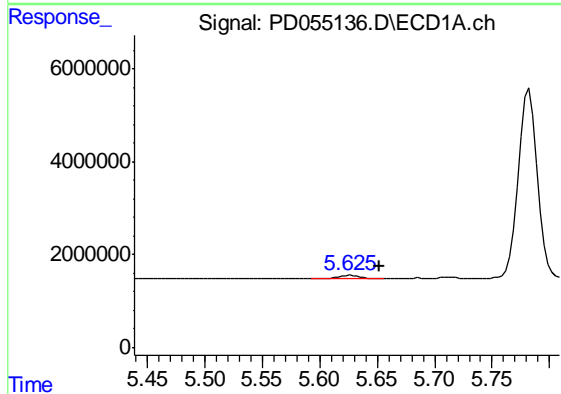
R.T.: 5.507 min
 Delta R.T.: 0.011 min
 Response: 222664
 Conc: 39.80 ng/ml

Instrument :
 ECD_D
 ClientSampled :
 PEM26



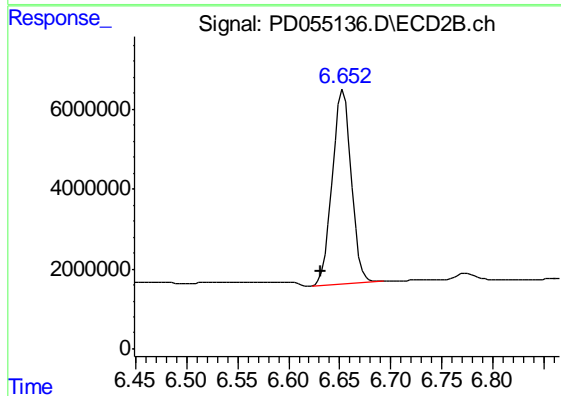
#22 Toxaphene-1

R.T.: 0.000 min
 Exp R.T. : 6.342 min
 Response: 0
 Conc: N.D.



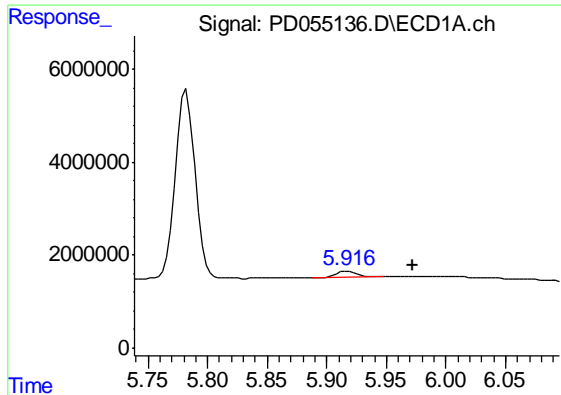
#23 Toxaphene-2

R.T.: 5.626 min
 Delta R.T.: -0.026 min
 Response: 719262
 Conc: 124.11 ng/ml



#23 Toxaphene-2

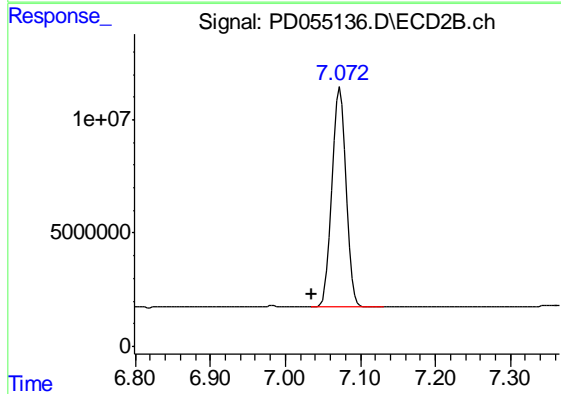
R.T.: 6.654 min
 Delta R.T.: 0.023 min
 Response: 62549735
 Conc: 7400.67 ng/ml



#24 Toxaphene-3

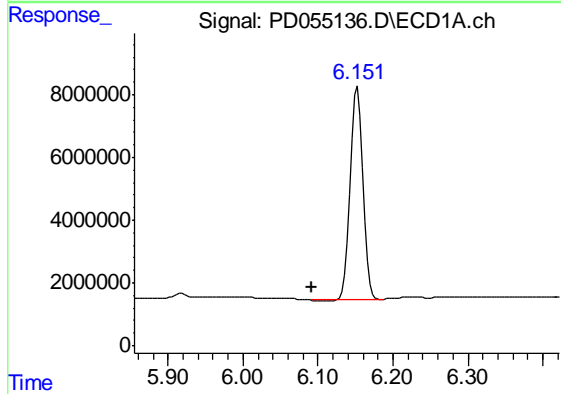
R.T.: 5.918 min
 Delta R.T.: -0.055 min
 Response: 1551029
 Conc: 310.48 ng/ml

Instrument :
 ECD_D
 ClientSampled :
 PEM26



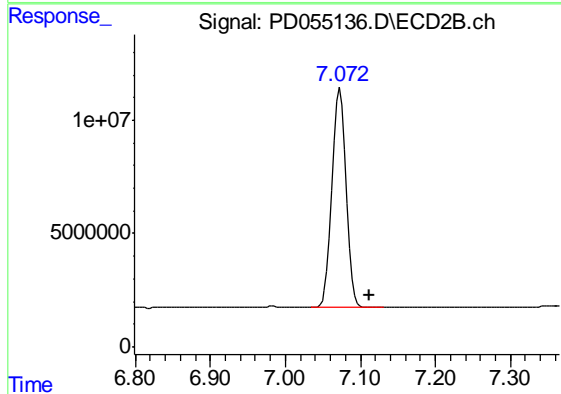
#24 Toxaphene-3

R.T.: 7.073 min
 Delta R.T.: 0.037 min
 Response: 124411714
 Conc: 10147.99 ng/ml



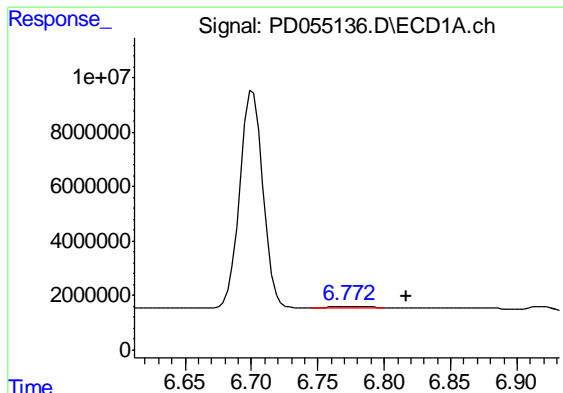
#25 Toxaphene-4

R.T.: 6.152 min
 Delta R.T.: 0.061 min
 Response: 78004543
 Conc: 5157.48 ng/ml



#25 Toxaphene-4

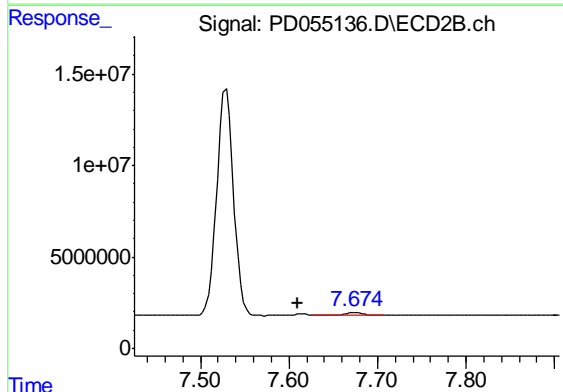
R.T.: 7.073 min
 Delta R.T.: -0.039 min
 Response: 124411714
 Conc: 3694.18 ng/ml



#26 Toxaphene-5

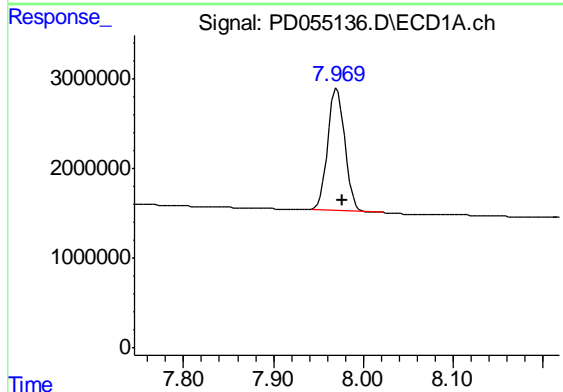
R.T.: 6.773 min
 Delta R.T.: -0.044 min
 Response: 394166
 Conc: 21.31 ng/ml

Instrument :
 ECD_D
 ClientSampled :
 PEM26



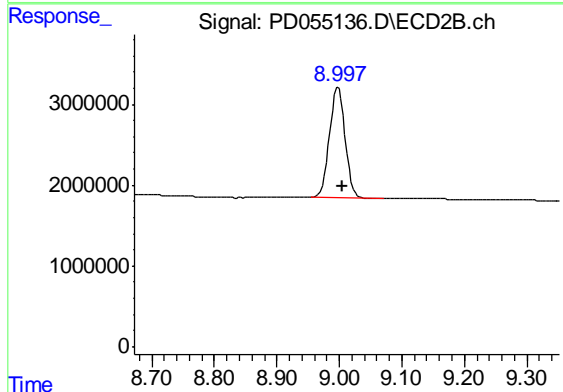
#26 Toxaphene-5

R.T.: 7.675 min
 Delta R.T.: 0.065 min
 Response: 1352837
 Conc: 82.40 ng/ml



#27 Decachlorobiphenyl

R.T.: 7.971 min
 Delta R.T.: -0.006 min
 Response: 18117295
 Conc: 21.50 ng/ml



#27 Decachlorobiphenyl

R.T.: 8.998 min
 Delta R.T.: -0.007 min
 Response: 23729850
 Conc: 20.37 ng/ml