

Data Path : Z:\pestpcbsrv\HPCHEM1\ECD\_D\Data\PD100219\  
 Data File : PD055157.D  
 Signal(s) : Signal #1: ECD1A.ch Signal #2: ECD2B.ch  
 Acq On : 02 Oct 2019 19:04  
 Operator : SG\AJ  
 Sample : K5084-05  
 Misc :  
 ALS Vial : 18 Sample Multiplier: 1

Instrument :  
 ECD\_D  
 ClientSampleId :  
 C0B12

Integration File signal 1: autoint1.e  
 Integration File signal 2: autoint2.e  
 Quant Time: Oct 03 01:18:41 2019  
 Quant Method : Z:\pestpcbsrv\HPCHEM1\ECD\_D\Method\PD092319CLP.M  
 Quant Title : GC Extractables  
 QLast Update : Tue Sep 24 07:21:19 2019  
 Response via : Initial Calibration  
 Integrator: ChemStation

Volume Inj. : 1 µl  
 Signal #1 Phase : ZB-MR2 Signal #2 Phase: ZB-MR1  
 Signal #1 Info : 30M x 0.32mm x0.2 Signal #2 Info : 30M x 0.32mm x 0.50µm

Compound	RT#1	RT#2	Resp#1	Resp#2	ng/ml	ng/ml
-----						
System Monitoring Compounds						
1) SA Tetrachlo...	3.291	3.963	15368580	20372084	20.201	19.852
27) SA Decachlor...	7.970	8.998	29612673	40953687	35.145	35.151
Target Compounds						
2) A alpha-BHC	0.000	4.387f	0	4057397	N.D.	2.814
3) MA gamma-BHC...	3.999	0.000	1251951	0	1.168	N.D. #
4) MA Heptachlor	4.265	0.000	349645	0	0.378	N.D. #
5) MB Aldrin	4.479f	0.000	162230	0	0.167	N.D. #
6) B beta-BHC	4.265	0.000	349645	0	0.747	N.D. #
7) B delta-BHC	4.434	0.000	266714	0	0.249	N.D. #
8) B Heptachlo...	4.959	0.000	264014	0	0.288	N.D. #
9) A Endosulfan I	5.315	6.217	2238995	2525119	2.523	2.001
10) B trans-Chl...	5.200	6.043	1632119	8158762	1.728	6.019 #
11) B cis-Chlor...	5.200f	6.135	1632119	2483674	1.783	1.886
12) B 4,4'-DDE	5.405	6.287	3699100	4616377	4.123	3.566
13) MA Dieldrin	5.511	6.464	2624125	1588546	2.666	1.138 #
14) MA Endrin	5.788	0.000	434977	0	0.523	N.D. #
15) B Endosulfa...	6.062	0.000	2140000	0	2.457	N.D. #
16) A 4,4'-DDD	5.919	6.772	1129317	3824349	1.557	3.523 #
17) MA 4,4'-DDT	6.150	7.074	1645879	3121083	2.469	2.851
18) B Endrin al...	6.246	0.000	98470	0	0.135	N.D. #
19) B Endosulfa...	6.423	0.000	1370134	0	1.688	N.D. #
20) A Methoxychlor	6.730	7.585f	2097031	468288	5.915	0.751 #
21) B Endrin ke...	6.865f	7.639f	3795789	2301832	4.203	1.747 #
22) Toxaphene-1	5.511	6.287	2624125	4616377	469.076	702.722 #
23) Toxaphene-2	5.663	0.000	480530	0	82.913	N.D. #
24) Toxaphene-3	5.919	7.074	1129317	3121083	226.062	254.580
25) Toxaphene-4	6.062	7.120	2140000	1515776	141.492	45.008 #
26) Toxaphene-5	6.826	7.585	173993	468288	9.406	28.524 #

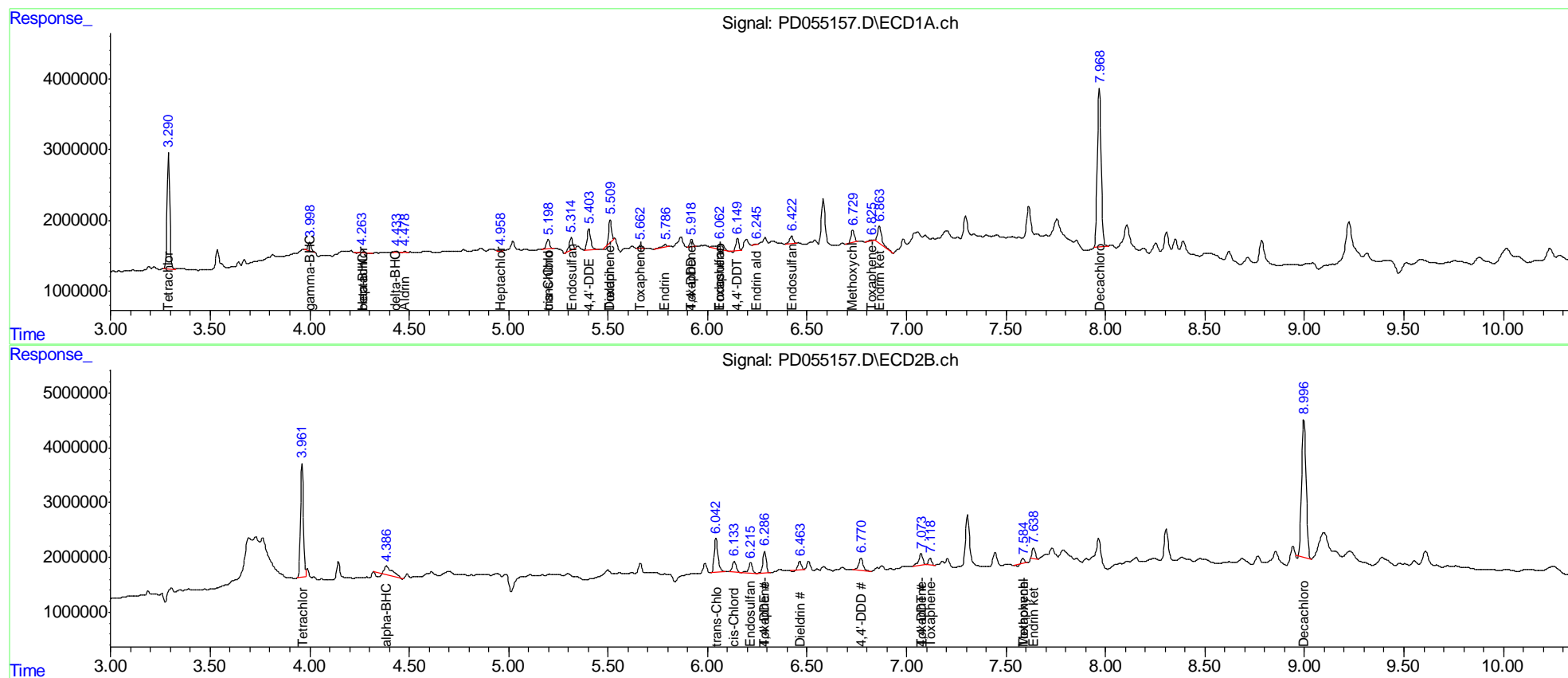
(f)=RT Delta > 1/2 Window (#)=Amounts differ by > 25% (m)=manual int.

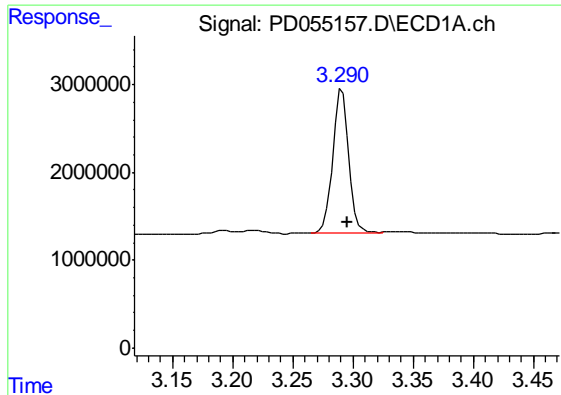
Data Path : Z:\pestpcbsrv\HPCHEM1\ECD\_D\Data\PD100219\  
 Data File : PD055157.D  
 Signal(s) : Signal #1: ECD1A.ch Signal #2: ECD2B.ch  
 Acq On : 02 Oct 2019 19:04  
 Operator : SG\AJ  
 Sample : K5084-05  
 Misc :  
 ALS Vial : 18 Sample Multiplier: 1

Instrument :  
 ECD\_D  
 Client Sampled :  
 C0B12

Integration File signal 1: autoint1.e  
 Integration File signal 2: autoint2.e  
 Quant Time: Oct 03 01:18:41 2019  
 Quant Method : Z:\pestpcbsrv\HPCHEM1\ECD\_D\Method\PD092319CLP.M  
 Quant Title : GC Extractables  
 QLast Update : Tue Sep 24 07:21:19 2019  
 Response via : Initial Calibration  
 Integrator: ChemStation

Volume Inj. : 1 µl  
 Signal #1 Phase : ZB-MR2 Signal #2 Phase: ZB-MR1  
 Signal #1 Info : 30M x 0.32mm x0.2 Signal #2 Info : 30M x 0.32mm x 0.50µm

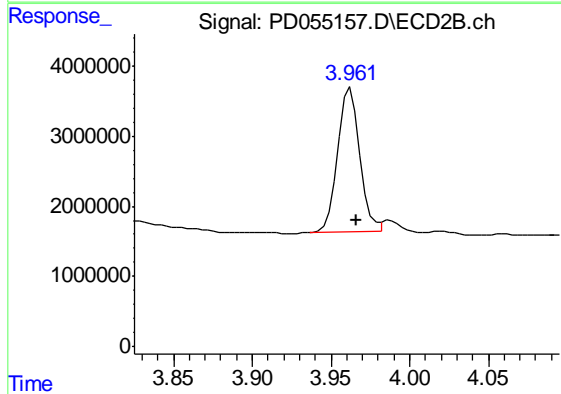




#1 Tetrachloro-m-xylene

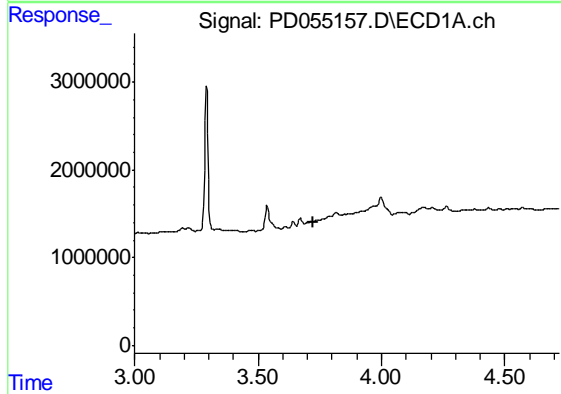
R.T.: 3.291 min  
 Delta R.T.: -0.004 min  
 Response: 15368580  
 Conc: 20.20 ng/ml

Instrument :  
 ECD\_D  
 ClientSampled :  
 C0B12



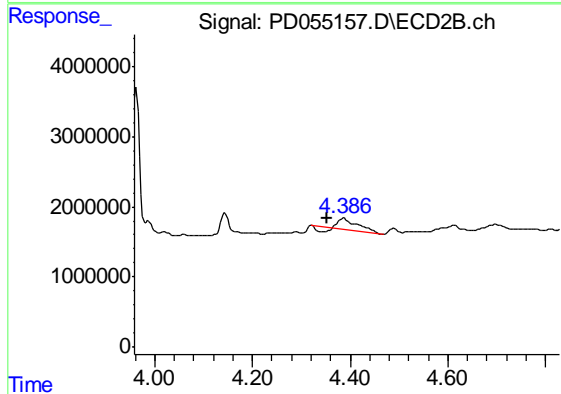
#1 Tetrachloro-m-xylene

R.T.: 3.963 min  
 Delta R.T.: -0.004 min  
 Response: 20372084  
 Conc: 19.85 ng/ml



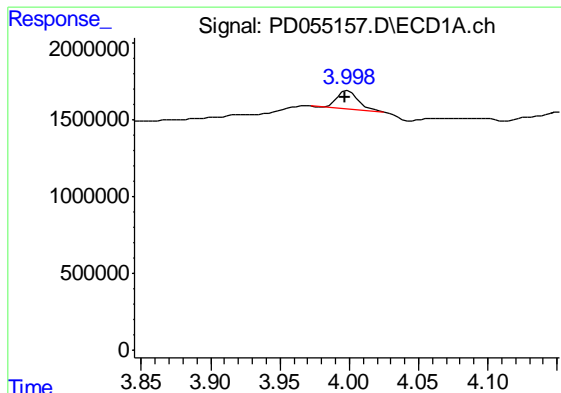
#2 alpha-BHC

R.T.: 0.000 min  
 Exp R.T. : 3.722 min  
 Response: 0  
 Conc: N.D.



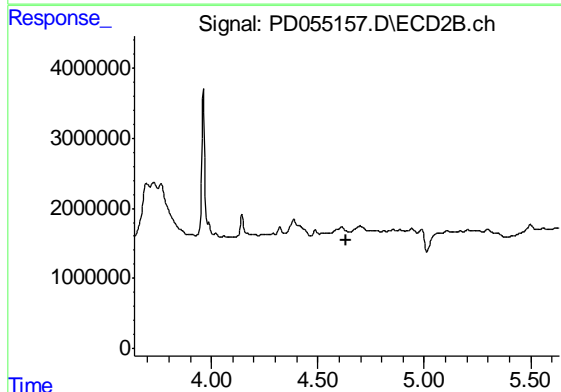
#2 alpha-BHC

R.T.: 4.387 min  
 Delta R.T.: 0.034 min  
 Response: 4057397  
 Conc: 2.81 ng/ml

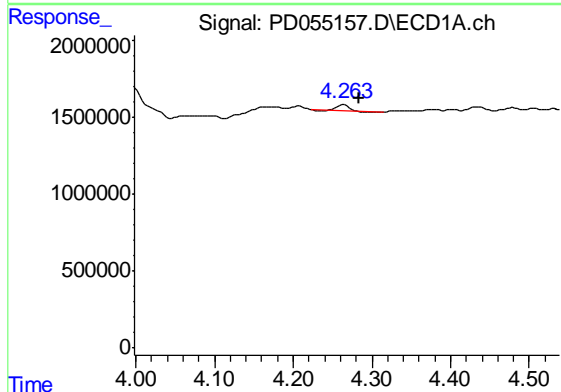


#3 gamma-BHC (Lindane)  
 R.T.: 3.999 min  
 Delta R.T.: 0.002 min  
 Response: 1251951  
 Conc: 1.17 ng/ml

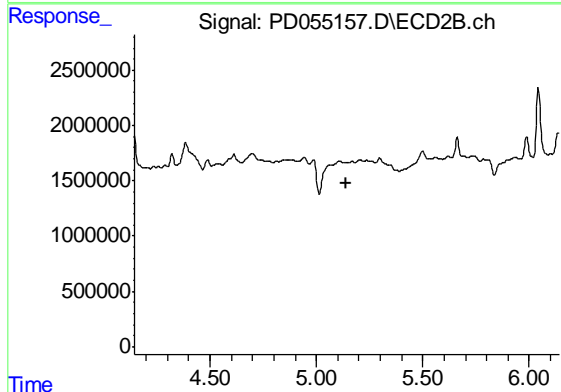
Instrument :  
 ECD\_D  
 ClientSampleId :  
 C0B12



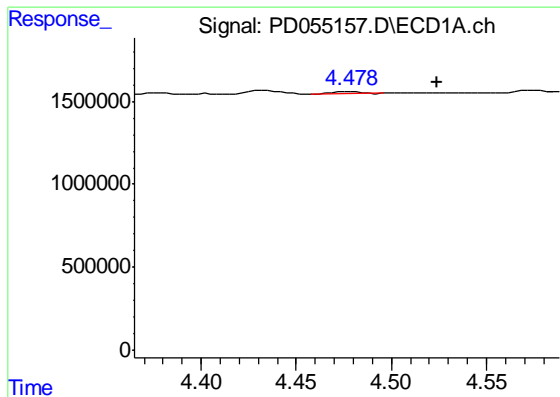
#3 gamma-BHC (Lindane)  
 R.T.: 0.000 min  
 Exp R.T. : 4.635 min  
 Response: 0  
 Conc: N.D.



#4 Heptachlor  
 R.T.: 4.265 min  
 Delta R.T.: -0.019 min  
 Response: 349645  
 Conc: 0.38 ng/ml



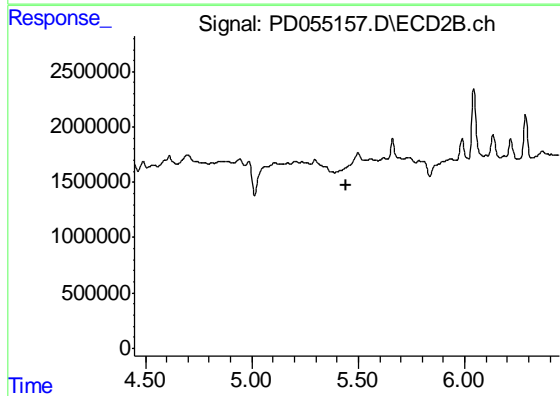
#4 Heptachlor  
 R.T.: 0.000 min  
 Exp R.T. : 5.142 min  
 Response: 0  
 Conc: N.D.



#5 Aldrin

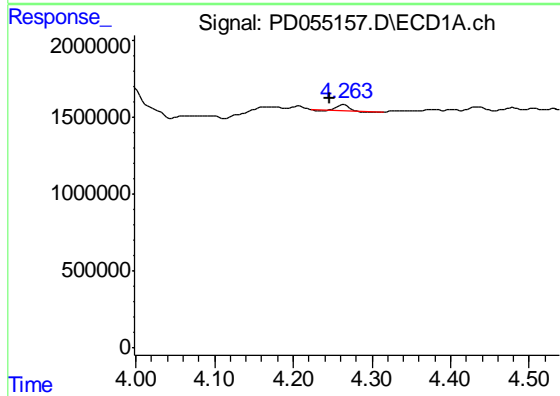
R.T.: 4.479 min  
 Delta R.T.: -0.045 min  
 Response: 162230  
 Conc: 0.17 ng/ml

Instrument :  
 ECD\_D  
 ClientSampled :  
 C0B12



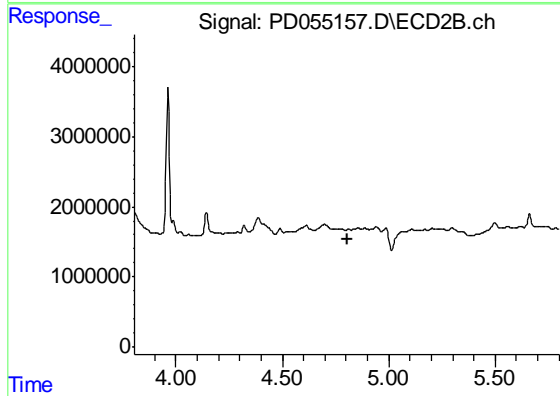
#5 Aldrin

R.T.: 0.000 min  
 Exp R.T. : 5.447 min  
 Response: 0  
 Conc: N.D.



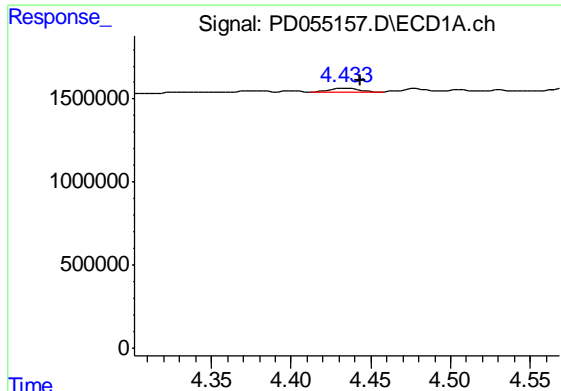
#6 beta-BHC

R.T.: 4.265 min  
 Delta R.T.: 0.018 min  
 Response: 349645  
 Conc: 0.75 ng/ml



#6 beta-BHC

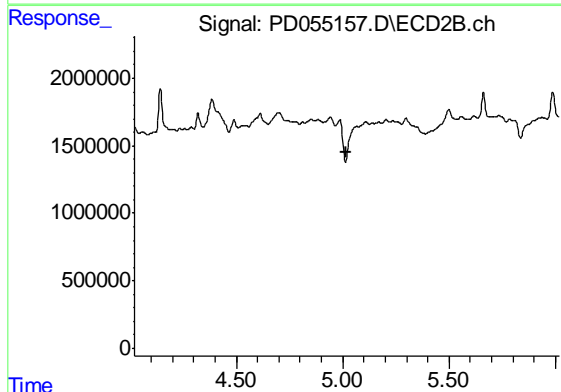
R.T.: 0.000 min  
 Exp R.T. : 4.804 min  
 Response: 0  
 Conc: N.D.



#7 delta-BHC

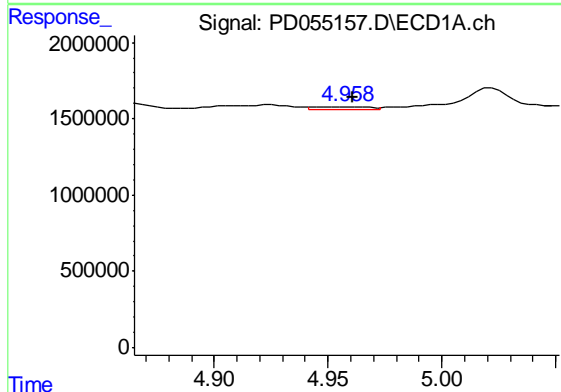
R.T.: 4.434 min  
 Delta R.T.: -0.009 min  
 Response: 266714  
 Conc: 0.25 ng/ml

Instrument :  
 ECD\_D  
 ClientSampled :  
 C0B12



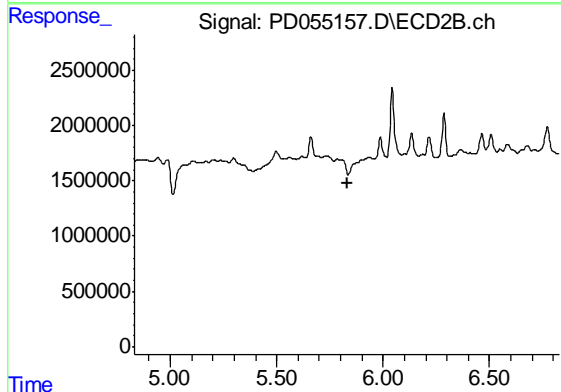
#7 delta-BHC

R.T.: 0.000 min  
 Exp R.T. : 5.019 min  
 Response: 0  
 Conc: N.D.



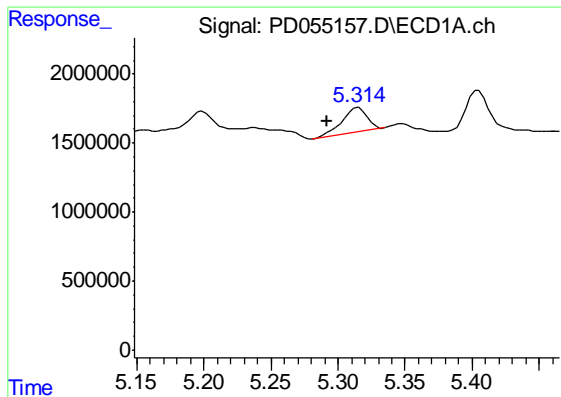
#8 Heptachlor epoxide

R.T.: 4.959 min  
 Delta R.T.: -0.002 min  
 Response: 264014  
 Conc: 0.29 ng/ml



#8 Heptachlor epoxide

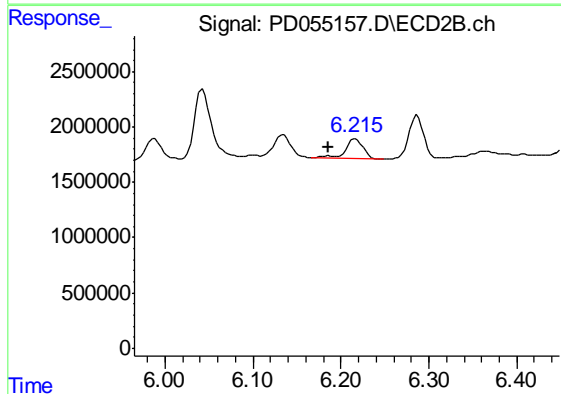
R.T.: 0.000 min  
 Exp R.T. : 5.831 min  
 Response: 0  
 Conc: N.D.



#9 Endosulfan I

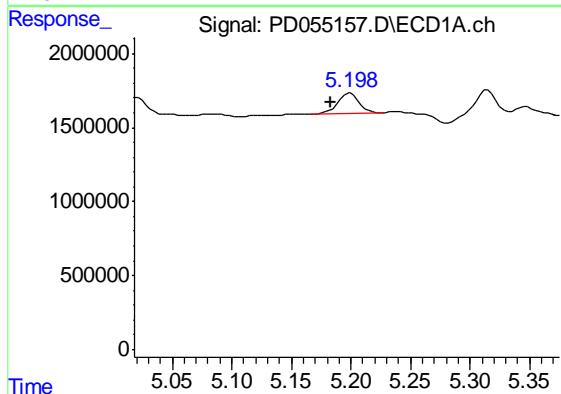
R.T.: 5.315 min  
 Delta R.T.: 0.023 min  
 Response: 2238995  
 Conc: 2.52 ng/ml

Instrument :  
 ECD\_D  
 ClientSampleId :  
 C0B12



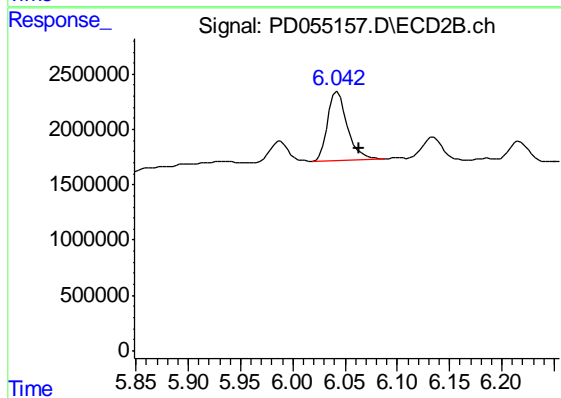
#9 Endosulfan I

R.T.: 6.217 min  
 Delta R.T.: 0.032 min  
 Response: 2525119  
 Conc: 2.00 ng/ml



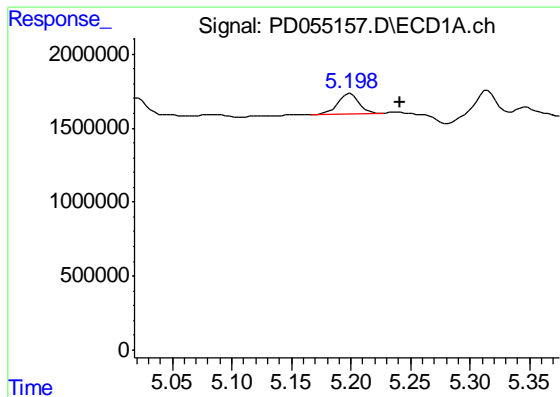
#10 trans-Chlordane

R.T.: 5.200 min  
 Delta R.T.: 0.016 min  
 Response: 1632119  
 Conc: 1.73 ng/ml



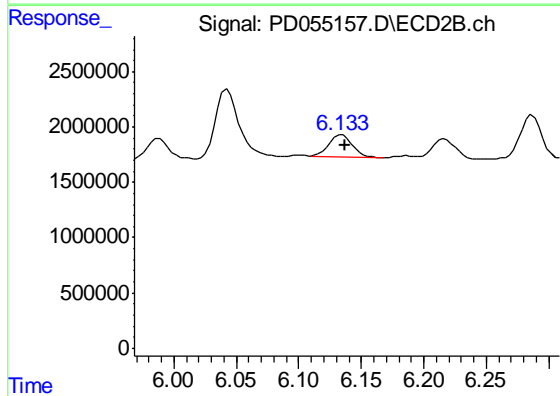
#10 trans-Chlordane

R.T.: 6.043 min  
 Delta R.T.: -0.021 min  
 Response: 8158762  
 Conc: 6.02 ng/ml

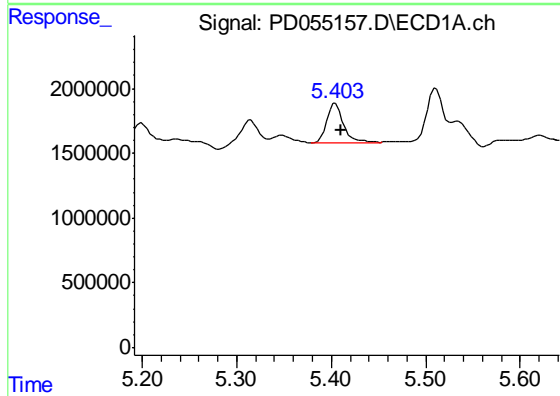


#11 cis-Chlordane  
 R.T.: 5.200 min  
 Delta R.T.: -0.041 min  
 Response: 1632119  
 Conc: 1.78 ng/ml

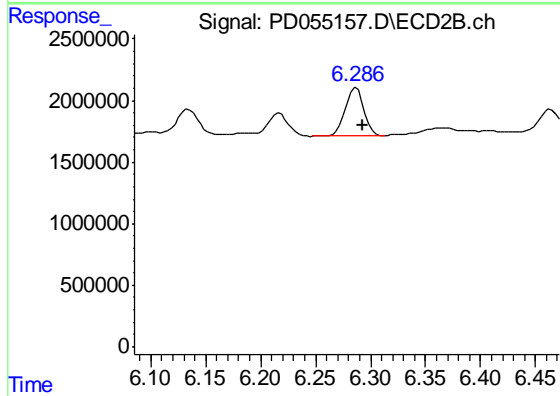
Instrument :  
 ECD\_D  
 ClientSampled :  
 C0B12



#11 cis-Chlordane  
 R.T.: 6.135 min  
 Delta R.T.: -0.002 min  
 Response: 2483674  
 Conc: 1.89 ng/ml

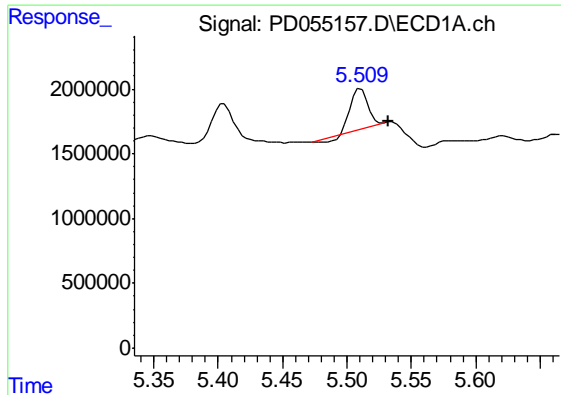


#12 4,4'-DDE  
 R.T.: 5.405 min  
 Delta R.T.: -0.005 min  
 Response: 3699100  
 Conc: 4.12 ng/ml



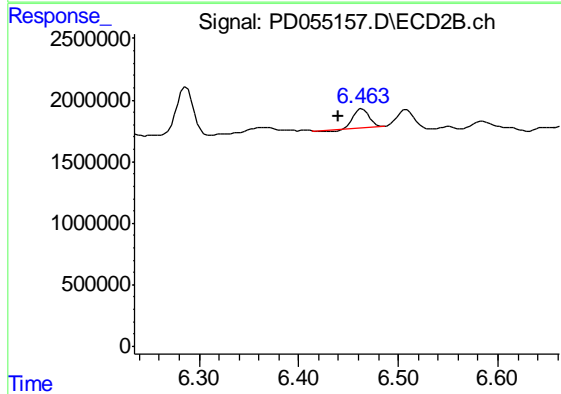
#12 4,4'-DDE  
 R.T.: 6.287 min  
 Delta R.T.: -0.006 min  
 Response: 4616377  
 Conc: 3.57 ng/ml



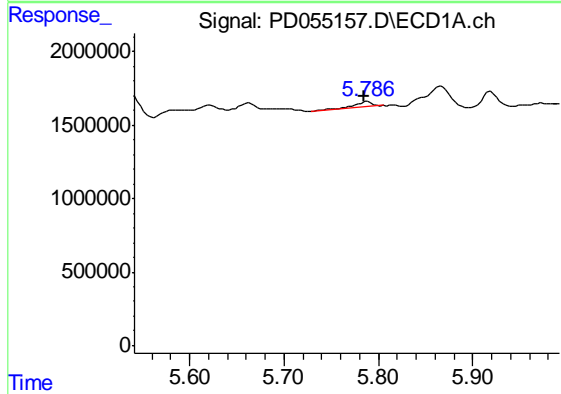


#13 Dieldrin  
 R.T.: 5.511 min  
 Delta R.T.: -0.021 min  
 Response: 2624125  
 Conc: 2.67 ng/ml

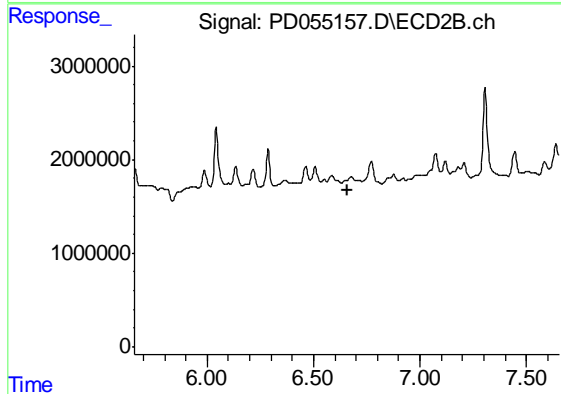
Instrument :  
 ECD\_D  
 ClientSampled :  
 C0B12



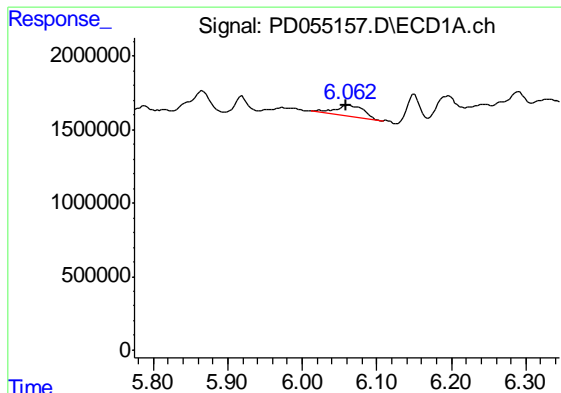
#13 Dieldrin  
 R.T.: 6.464 min  
 Delta R.T.: 0.023 min  
 Response: 1588546  
 Conc: 1.14 ng/ml



#14 Endrin  
 R.T.: 5.788 min  
 Delta R.T.: 0.003 min  
 Response: 434977  
 Conc: 0.52 ng/ml



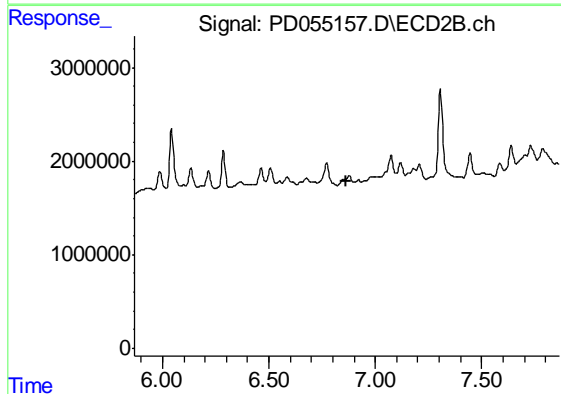
#14 Endrin  
 R.T.: 0.000 min  
 Exp R.T. : 6.658 min  
 Response: 0  
 Conc: N.D.



#15 Endosulfan II

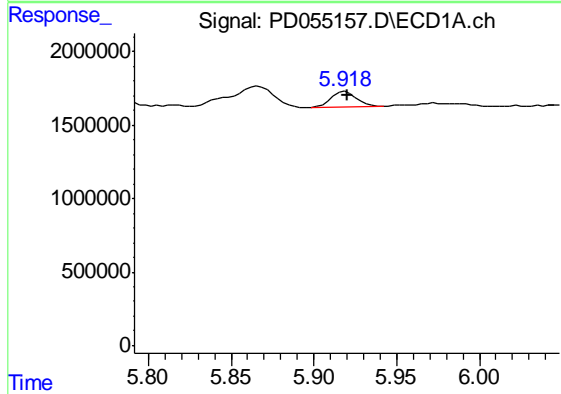
R.T.: 6.062 min  
 Delta R.T.: 0.003 min  
 Response: 2140000  
 Conc: 2.46 ng/ml

Instrument :  
 ECD\_D  
 ClientSampleId :  
 C0B12



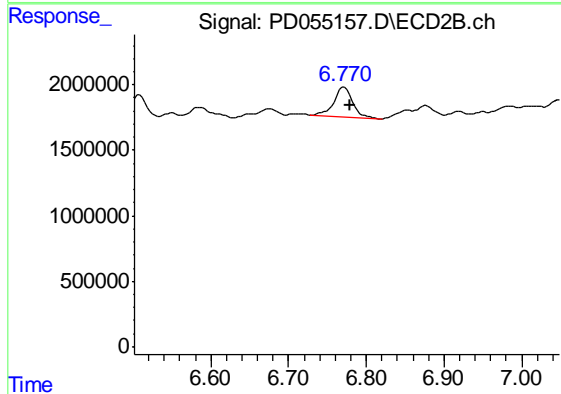
#15 Endosulfan II

R.T.: 0.000 min  
 Exp R.T. : 6.866 min  
 Response: 0  
 Conc: N.D.



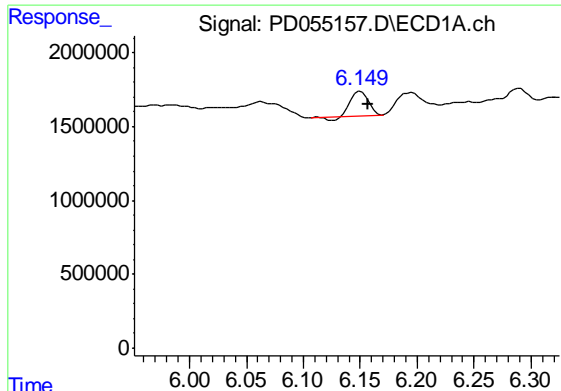
#16 4,4'-DDD

R.T.: 5.919 min  
 Delta R.T.: -0.001 min  
 Response: 1129317  
 Conc: 1.56 ng/ml



#16 4,4'-DDD

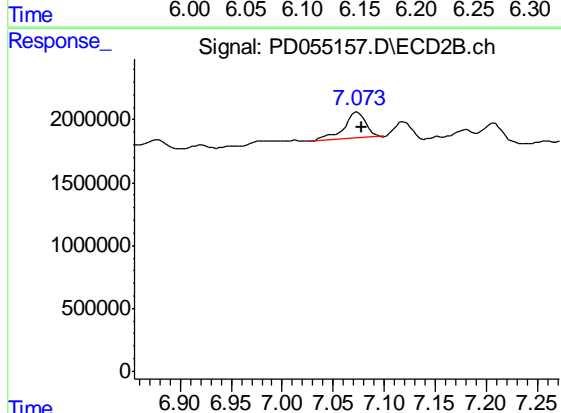
R.T.: 6.772 min  
 Delta R.T.: -0.008 min  
 Response: 3824349  
 Conc: 3.52 ng/ml



#17 4,4'-DDT

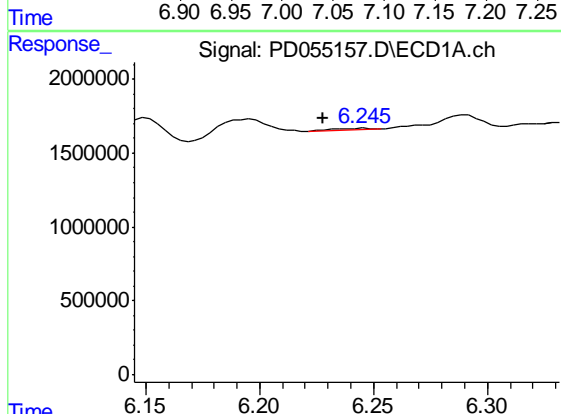
R.T.: 6.150 min  
 Delta R.T.: -0.006 min  
 Response: 1645879  
 Conc: 2.47 ng/ml

Instrument :  
 ECD\_D  
 ClientSampled :  
 C0B12



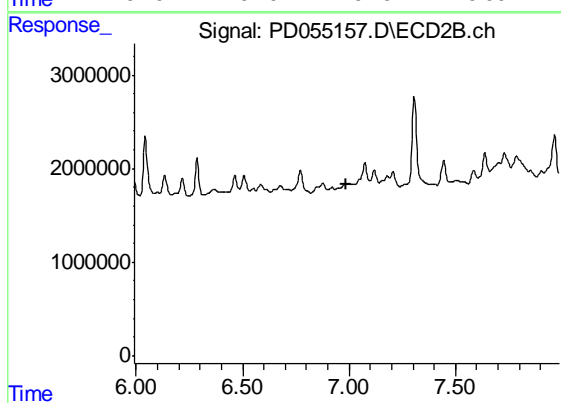
#17 4,4'-DDT

R.T.: 7.074 min  
 Delta R.T.: -0.004 min  
 Response: 3121083  
 Conc: 2.85 ng/ml



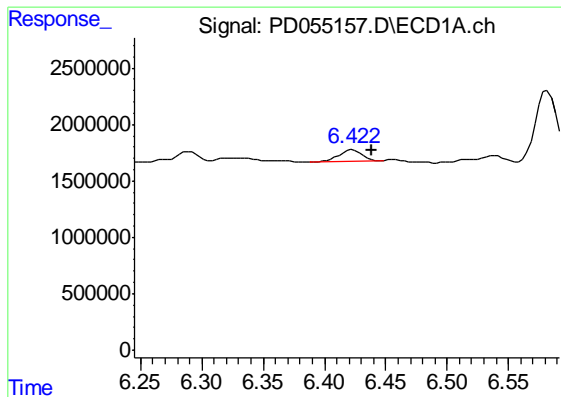
#18 Endrin aldehyde

R.T.: 6.246 min  
 Delta R.T.: 0.018 min  
 Response: 98470  
 Conc: 0.14 ng/ml



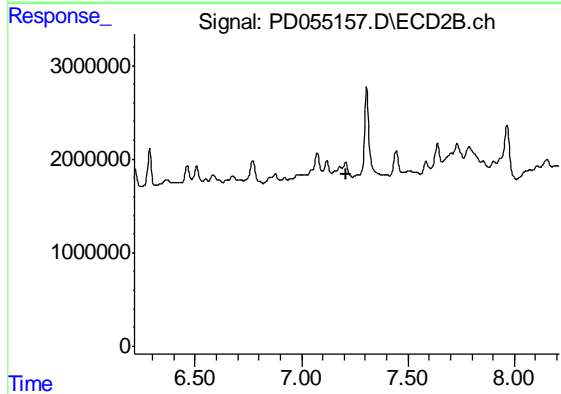
#18 Endrin aldehyde

R.T.: 0.000 min  
 Exp R.T. : 6.989 min  
 Response: 0  
 Conc: N.D.

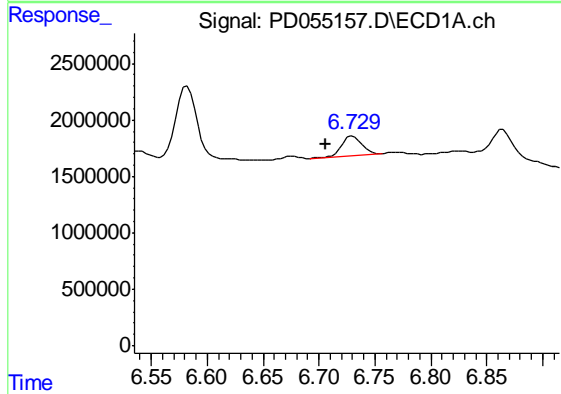


#19 Endosulfan Sulfate  
 R.T.: 6.423 min  
 Delta R.T.: -0.016 min  
 Response: 1370134  
 Conc: 1.69 ng/ml

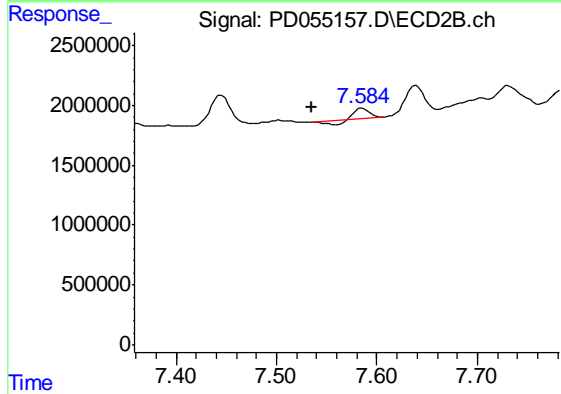
Instrument :  
 ECD\_D  
 ClientSampleId :  
 C0B12



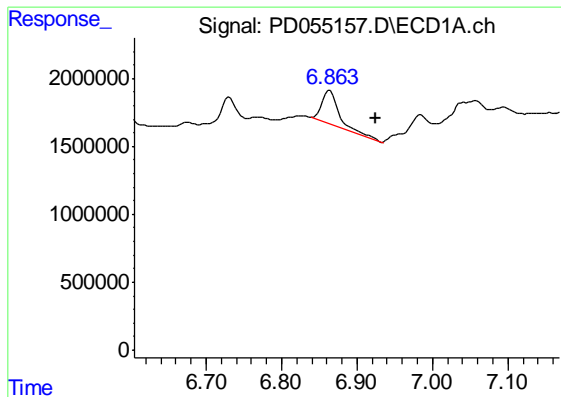
#19 Endosulfan Sulfate  
 R.T.: 0.000 min  
 Exp R.T. : 7.212 min  
 Response: 0  
 Conc: N.D.



#20 Methoxychlor  
 R.T.: 6.730 min  
 Delta R.T.: 0.024 min  
 Response: 2097031  
 Conc: 5.91 ng/ml



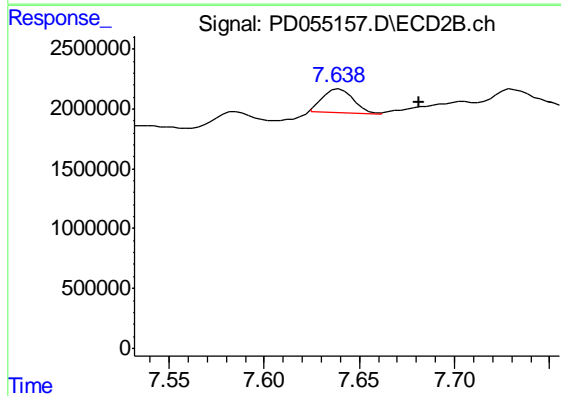
#20 Methoxychlor  
 R.T.: 7.585 min  
 Delta R.T.: 0.051 min  
 Response: 468288  
 Conc: 0.75 ng/ml



#21 Endrin ketone

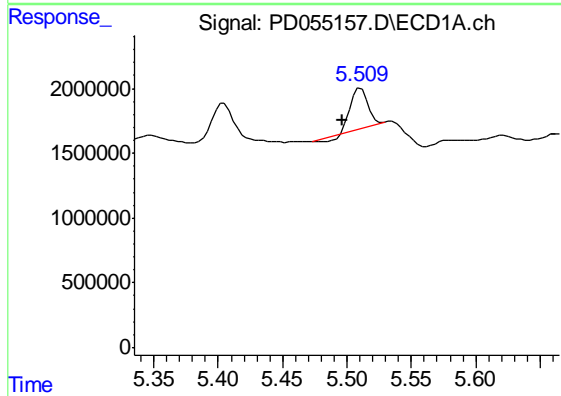
R.T.: 6.865 min  
 Delta R.T.: -0.060 min  
 Response: 3795789  
 Conc: 4.20 ng/ml

Instrument :  
 ECD\_D  
 ClientSampleId :  
 C0B12



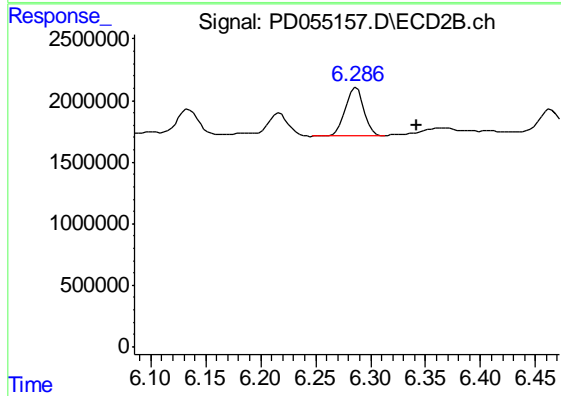
#21 Endrin ketone

R.T.: 7.639 min  
 Delta R.T.: -0.042 min  
 Response: 2301832  
 Conc: 1.75 ng/ml



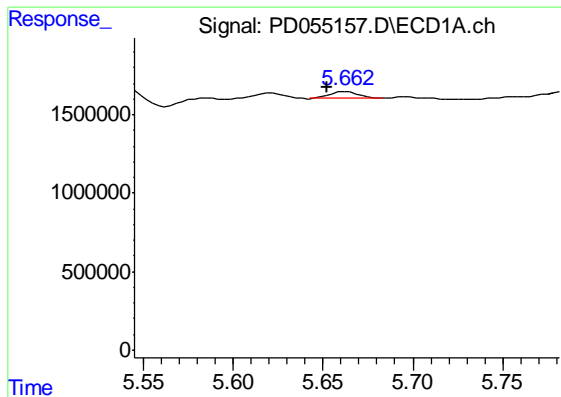
#22 Toxaphene-1

R.T.: 5.511 min  
 Delta R.T.: 0.014 min  
 Response: 2624125  
 Conc: 469.08 ng/ml



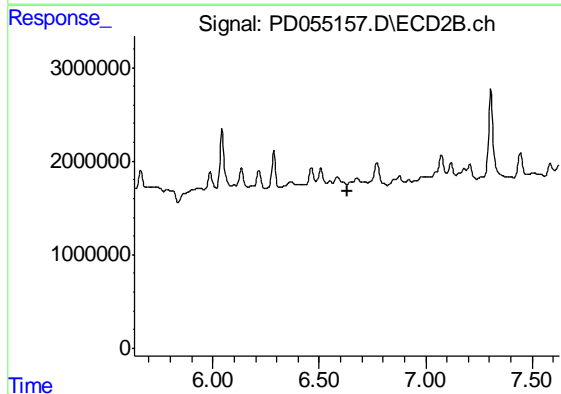
#22 Toxaphene-1

R.T.: 6.287 min  
 Delta R.T.: -0.055 min  
 Response: 4616377  
 Conc: 702.72 ng/ml

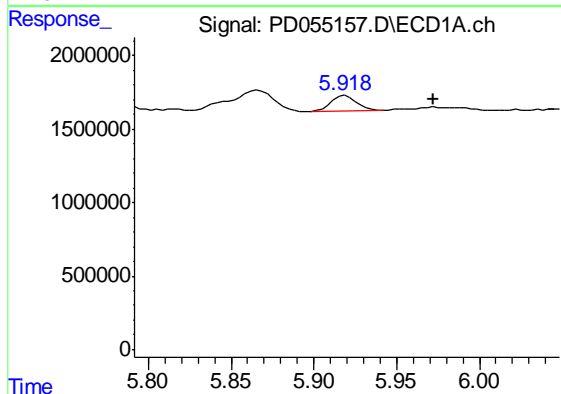


#23 Toxaphene-2  
 R.T.: 5.663 min  
 Delta R.T.: 0.011 min  
 Response: 480530  
 Conc: 82.91 ng/ml

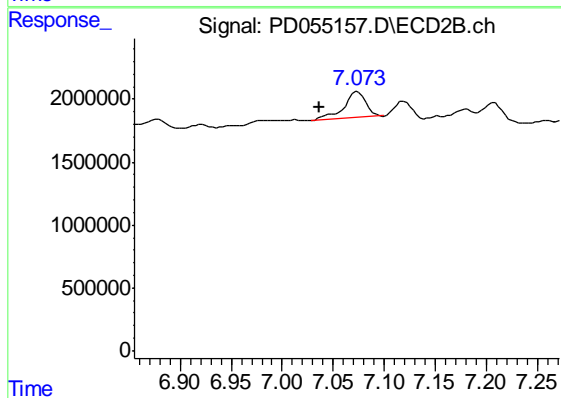
Instrument :  
 ECD\_D  
 ClientSampleId :  
 C0B12



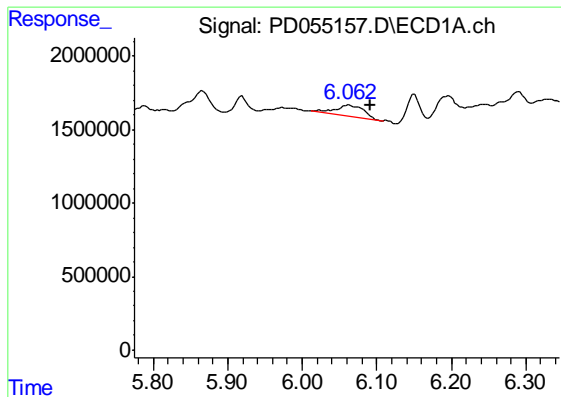
#23 Toxaphene-2  
 R.T.: 0.000 min  
 Exp R.T. : 6.631 min  
 Response: 0  
 Conc: N.D.



#24 Toxaphene-3  
 R.T.: 5.919 min  
 Delta R.T.: -0.053 min  
 Response: 1129317  
 Conc: 226.06 ng/ml

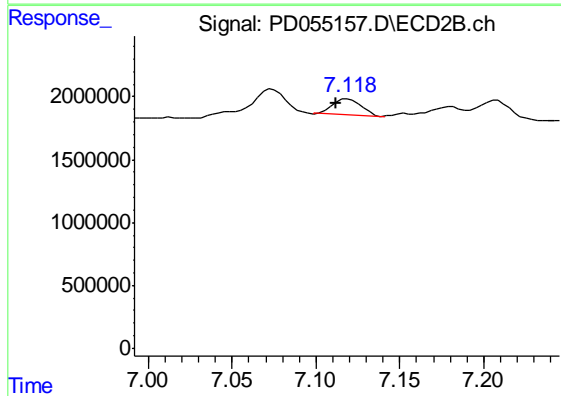


#24 Toxaphene-3  
 R.T.: 7.074 min  
 Delta R.T.: 0.038 min  
 Response: 3121083  
 Conc: 254.58 ng/ml

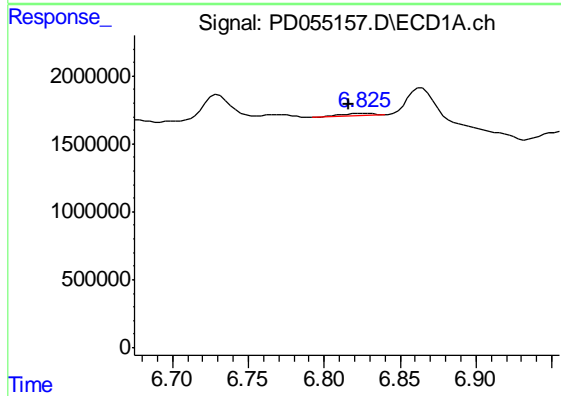


#25 Toxaphene-4  
 R.T.: 6.062 min  
 Delta R.T.: -0.029 min  
 Response: 2140000  
 Conc: 141.49 ng/ml

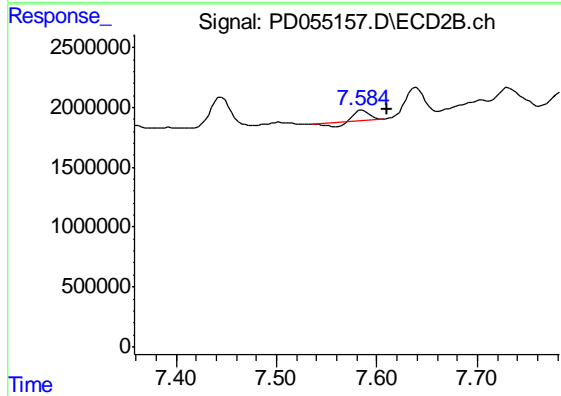
Instrument :  
 ECD\_D  
 ClientSampleId :  
 C0B12



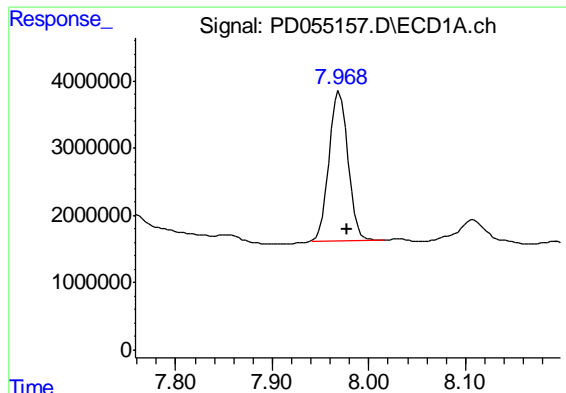
#25 Toxaphene-4  
 R.T.: 7.120 min  
 Delta R.T.: 0.008 min  
 Response: 1515776  
 Conc: 45.01 ng/ml



#26 Toxaphene-5  
 R.T.: 6.826 min  
 Delta R.T.: 0.009 min  
 Response: 173993  
 Conc: 9.41 ng/ml



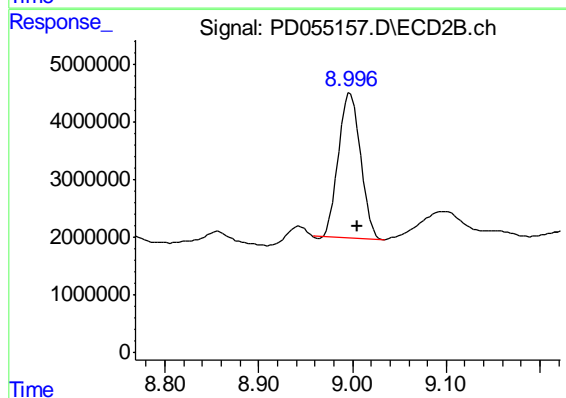
#26 Toxaphene-5  
 R.T.: 7.585 min  
 Delta R.T.: -0.024 min  
 Response: 468288  
 Conc: 28.52 ng/ml



#27 Decachlorobiphenyl

R.T.: 7.970 min  
Delta R.T.: -0.007 min  
Response: 29612673  
Conc: 35.15 ng/ml

Instrument :  
ECD\_D  
ClientSampleId :  
C0B12



#27 Decachlorobiphenyl

R.T.: 8.998 min  
Delta R.T.: -0.007 min  
Response: 40953687  
Conc: 35.15 ng/ml