

Data Path : Z:\pestpcbsrv\HPCHEM1\ECD_D\Data\PD100320\
 Data File : PD059474.D
 Signal(s) : Signal #1: ECD1A.ch Signal #2: ECD2B.ch
 Acq On : 02 Oct 2020 08:45
 Operator : DD\AJ
 Sample : L4188-01
 Misc :
 ALS Vial : 4 Sample Multiplier: 1

Instrument :
 ECD_D
ClientSampled :
 BG0Q8

Manual Integrations
APPROVED
 Ankita
 10/2/2020 5:00:56 PM

Integration File signal 1: autoint1.e
 Integration File signal 2: autoint2.e
 Quant Time: Oct 02 10:38:52 2020
 Quant Method : Z:\pestpcbsrv\HPCHEM1\ECD_D\Method\PD100220CLP.M
 Quant Title : GC Extractables
 QLast Update : Fri Oct 02 04:21:20 2020
 Response via : Initial Calibration
 Integrator: ChemStation

Volume Inj. : 1 µl
 Signal #1 Phase : ZB-MR2 Signal #2 Phase: ZB-MR1
 Signal #1 Info : 30M x 0.32mm x0.2 Signal #2 Info : 30M x 0.32mm x 0.50µm

Compound	RT#1	RT#2	Resp#1	Resp#2	ng/ml	ng/ml

System Monitoring Compounds						
1) SA Tetrachlo...	3.513	4.025	25517780	38130277	17.666m	19.198
2) SA Decachlor...	8.321	9.112	33054483	46181587	30.849	31.040

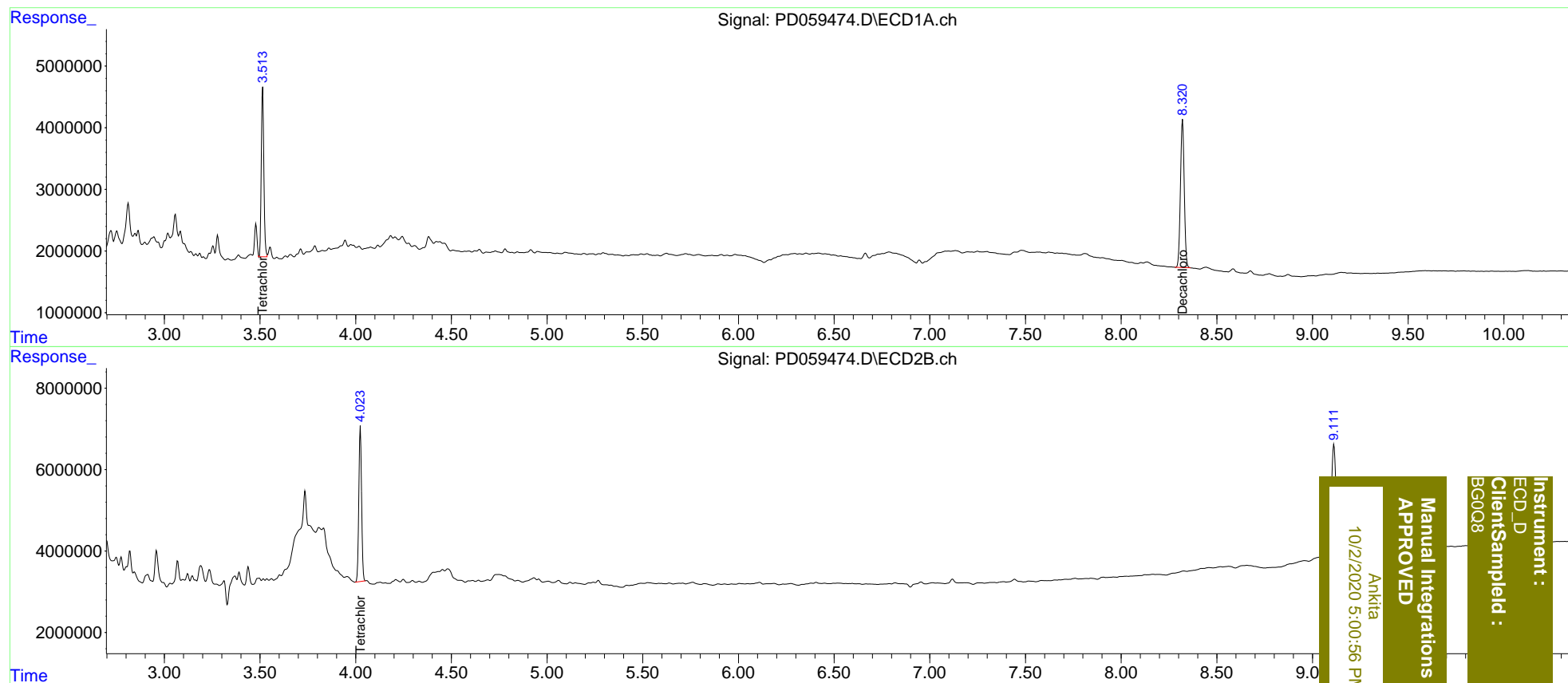
Target Compounds

(f)=RT Delta > 1/2 Window (#)=Amounts differ by > 25% (m)=manual int.

Data Path : Z:\pestpcbsrv\HPCHEM1\ECD_D\Data\PD100320\
 Data File : PD059474.D
 Signal(s) : Signal #1: ECD1A.ch Signal #2: ECD2B.ch
 Acq On : 02 Oct 2020 08:45
 Operator : DD\AJ
 Sample : L4188-01
 Misc :
 ALS Vial : 4 Sample Multiplier: 1

Integration File signal 1: autoint1.e
 Integration File signal 2: autoint2.e
 Quant Time: Oct 02 10:38:52 2020
 Quant Method : Z:\pestpcbsrv\HPCHEM1\ECD_D\Method\PD100220CLP.M
 Quant Title : GC Extractables
 QLast Update : Fri Oct 02 04:21:20 2020
 Response via : Initial Calibration
 Integrator: ChemStation

Volume Inj. : 1 µl
 Signal #1 Phase : ZB-MR2 Signal #2 Phase: ZB-MR1
 Signal #1 Info : 30M x 0.32mm x0.2 Signal #2 Info : 30M x 0.32mm x 0.50µm



Instrument :
 ECD_D
 ClientSampleId :
 BG008

Manual Integrations
 APPROVED
 Ankitia
 10/2/2020 5:00:56 PM