

Data Path : Z:\pestpcbsrv\HPCHEM1\ECD\_D\Data\PD100322\  
 Data File : PD072181.D  
 Signal(s) : Signal #1: ECD1A.ch Signal #2: ECD2B.ch  
 Acq On : 03 Oct 2022 21:48  
 Operator : AR\AJ  
 Sample : PTOXICV500  
 Misc :  
 ALS Vial : 22 Sample Multiplier: 1

**Instrument :**

ECD\_D

**ClientSampleId :**

ICVPD100322

**Manual Integrations**

**APPROVED**

Reviewed By :Abdul Mirza 10/05/2022  
 Supervised By :Ankita Jodhani 10/05/2022

Integration File signal 1: autoint1.e  
 Integration File signal 2: autoint2.e  
 Quant Time: Oct 05 11:45:25 2022  
 Quant Method : Z:\pestpcbsrv\HPCHEM1\ECD\_D\Method\DTX100322.M  
 Quant Title : GC Extractables  
 QLast Update : Wed Oct 05 11:44:13 2022  
 Response via : Initial Calibration  
 Integrator: ChemStation

Volume Inj. : 1 µl  
 Signal #1 Phase : ZB-MR2 Signal #2 Phase: ZB-MR1  
 Signal #1 Info : 30M x 0.32mm x0.2 Signal #2 Info : 30M x 0.32mm x 0.50µm

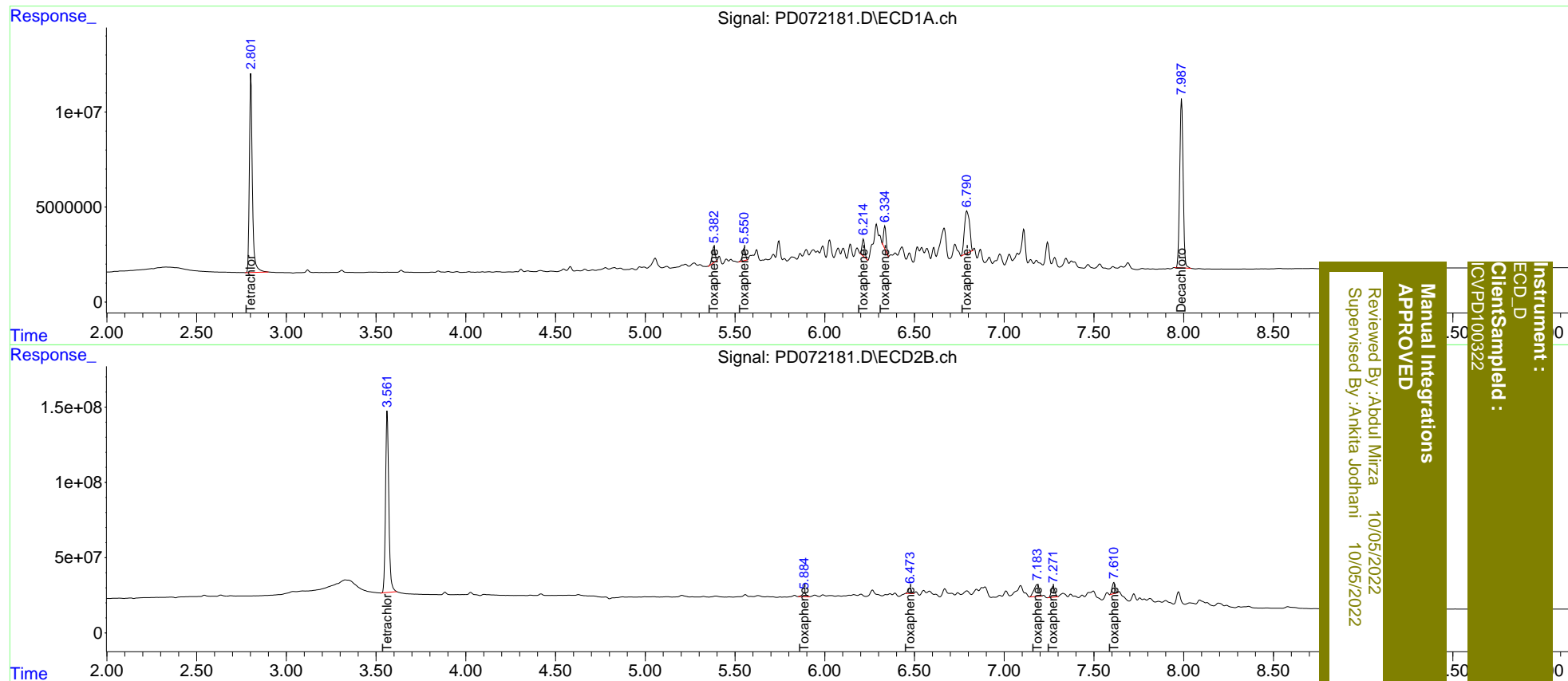
Compound	RT#1	RT#2	Resp#1	Resp#2	ng/ml	ng/ml
-----						
System Monitoring Compounds						
1) SA Tetrachlo...	2.803	3.562	121.0E6	1526.2E6	49.980	49.400
7) SA Decachlor...	7.989	9.085	118.4E6	441.2E6	49.124	49.037
Target Compounds						
2) Toxaphene-1	5.383	5.886	9362543	38213121	488.425	487.664
3) Toxaphene-2	5.552	6.475	7384186	43545528	500.436	509.635
4) Toxaphene-3	6.215	7.184	9441624	156.4E6	481.514	501.613
5) Toxaphene-4	6.334	7.273	11281210	98708734	505.546m	502.315
6) Toxaphene-5	6.792	7.611	44349928	87080146	505.887	490.920
-----						

(f)=RT Delta > 1/2 Window (#)=Amounts differ by > 25% (m)=manual int.

Data Path : Z:\pestpcbsrv\HPCHEM1\ECD\_D\Data\PD100322\  
 Data File : PD072181.D  
 Signal(s) : Signal #1: ECD1A.ch Signal #2: ECD2B.ch  
 Acq On : 03 Oct 2022 21:48  
 Operator : AR\AJ  
 Sample : PTOXICV500  
 Misc :  
 ALS Vial : 22 Sample Multiplier: 1

Integration File signal 1: autoint1.e  
 Integration File signal 2: autoint2.e  
 Quant Time: Oct 05 11:45:25 2022  
 Quant Method : Z:\pestpcbsrv\HPCHEM1\ECD\_D\Method\DTX100322.M  
 Quant Title : GC Extractables  
 QLast Update : Wed Oct 05 11:44:13 2022  
 Response via : Initial Calibration  
 Integrator: ChemStation

Volume Inj. : 1 µl  
 Signal #1 Phase : ZB-MR2 Signal #2 Phase: ZB-MR1  
 Signal #1 Info : 30M x 0.32mm x0.2 Signal #2 Info : 30M x 0.32mm x 0.50µm



Instrument : ECD\_D  
 Client/Sampled : ICV/PD100322  
 Manual Integrations APPROVED  
 Reviewed By :Abdul Mirza 10/05/2022  
 Supervised By :Ankita Jodhani 10/05/2022