

Data Path : Z:\pestpcbsrv\HPCHEM1\ECD_D\Data\PD100322\
 Data File : PD072186.D
 Signal(s) : Signal #1: ECD1A.ch Signal #2: ECD2B.ch
 Acq On : 04 Oct 2022 00:15
 Operator : AR\AJ
 Sample : PTOXCCC500
 Misc :
 ALS Vial : 17 Sample Multiplier: 1

Instrument :
 ECD_D
 ClientSampleId :
 PTOXCCC500

Manual Integrations
 APPROVED

Reviewed By :Abdul Mirza 10/05/2022
 Supervised By :Ankita Jodhani 10/05/2022

Integration File signal 1: autoint1.e
 Integration File signal 2: autoint2.e
 Quant Time: Oct 05 11:45:32 2022
 Quant Method : Z:\pestpcbsrv\HPCHEM1\ECD_D\Method\DTX100322.M
 Quant Title : GC Extractables
 QLast Update : Wed Oct 05 11:44:13 2022
 Response via : Initial Calibration
 Integrator: ChemStation

Volume Inj. : 1 µl
 Signal #1 Phase : ZB-MR2 Signal #2 Phase: ZB-MR1
 Signal #1 Info : 30M x 0.32mm x0.2 Signal #2 Info : 30M x 0.32mm x 0.50µm

Compound	RT#1	RT#2	Resp#1	Resp#2	ng/ml	ng/ml

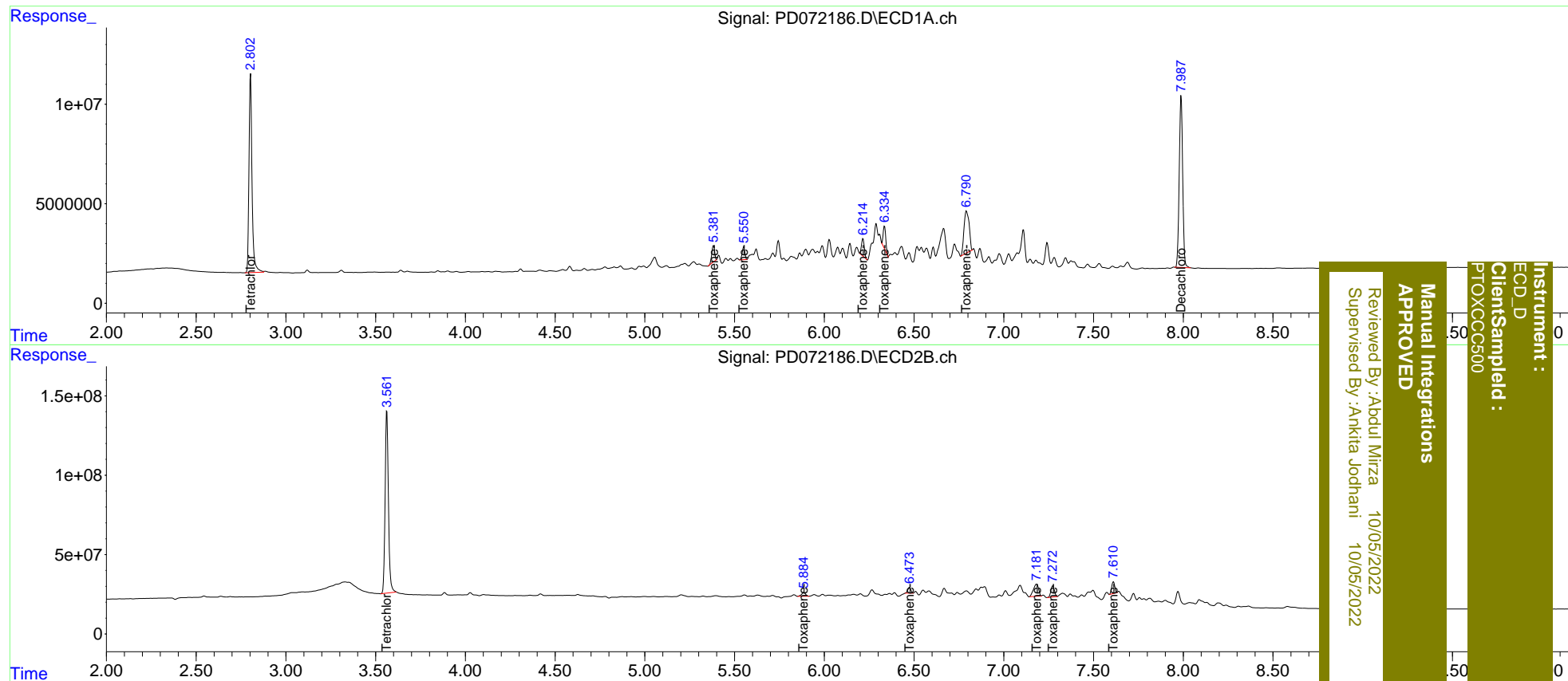
System Monitoring Compounds						
1) SA Tetrachlo...	2.803	3.563	117.5E6	1474.7E6	48.565	47.733
7) SA Decachlor...	7.988	9.085	115.7E6	433.8E6	48.002	48.218
Target Compounds						
2) Toxaphene-1	5.383	5.886	8860128	37776203	462.215	482.088
3) Toxaphene-2	5.550	6.475	6607817	43398116	447.820m	507.910
4) Toxaphene-3	6.215	7.183	9454517	151.5E6	482.172	485.683
5) Toxaphene-4	6.334	7.273	11162628	94982015	500.232m	483.350
6) Toxaphene-5	6.792	7.611	41657985	86263999	475.180	486.319

(f)=RT Delta > 1/2 Window (#)=Amounts differ by > 25% (m)=manual int.

Data Path : Z:\pestpcbsrv\HPCHEM1\ECD_D\Data\PD100322\
 Data File : PD072186.D
 Signal(s) : Signal #1: ECD1A.ch Signal #2: ECD2B.ch
 Acq On : 04 Oct 2022 00:15
 Operator : AR\AJ
 Sample : PTOXCCC500
 Misc :
 ALS Vial : 17 Sample Multiplier: 1

Integration File signal 1: autoint1.e
 Integration File signal 2: autoint2.e
 Quant Time: Oct 05 11:45:32 2022
 Quant Method : Z:\pestpcbsrv\HPCHEM1\ECD_D\Method\DTX100322.M
 Quant Title : GC Extractables
 QLast Update : Wed Oct 05 11:44:13 2022
 Response via : Initial Calibration
 Integrator: ChemStation

Volume Inj. : 1 µl
 Signal #1 Phase : ZB-MR2 Signal #2 Phase: ZB-MR1
 Signal #1 Info : 30M x 0.32mm x0.2 Signal #2 Info : 30M x 0.32mm x 0.50µm



Instrument : ECD_D
 Client Sampled : PTOXCCC500
 Manual Integrations APPROVED
 Reviewed By :Abdul Mirza 10/05/2022
 Supervised By :Ankita Jodhani 10/05/2022