

Data Path : Z:\pestpcbsrv\HPCHEM1\ECD\_D\Data\PD100323\  
 Data File : PD078546.D  
 Signal(s) : Signal #1: ECD1A.ch Signal #2: ECD2B.ch  
 Acq On : 02 Oct 2023 22:15  
 Operator : AR\AJ  
 Sample : I.BLK  
 Misc :  
 ALS Vial : 2 Sample Multiplier: 1

Instrument :  
 ECD\_D  
 ClientSampleId :  
 I.BLK

Integration File signal 1: autoint1.e  
 Integration File signal 2: autoint2.e  
 Quant Time: Oct 03 01:28:43 2023  
 Quant Method : Z:\pestpcbsrv\HPCHEM1\ECD\_D\Method\PD100323.M  
 Quant Title : GC Extractables  
 QLast Update : Tue Oct 03 01:10:04 2023  
 Response via : Initial Calibration  
 Integrator: ChemStation

Volume Inj. : 1 µl  
 Signal #1 Phase : ZB-MR1 Signal #2 Phase: ZB-MR2  
 Signal #1 Info : 30M x 0.32mm x0.5 Signal #2 Info : 30M x 0.32mm x 0.25µm

Compound	RT#1	RT#2	Resp#1	Resp#2	ng/ml	ng/ml
-----						
System Monitoring Compounds						
1) SA Tetrachlo...	3.540	2.774f	57570418	51335132	19.943	25.135 #
28) SA Decachlor...	9.077	7.910f	79622595	46837368	21.470	20.641

Target Compounds

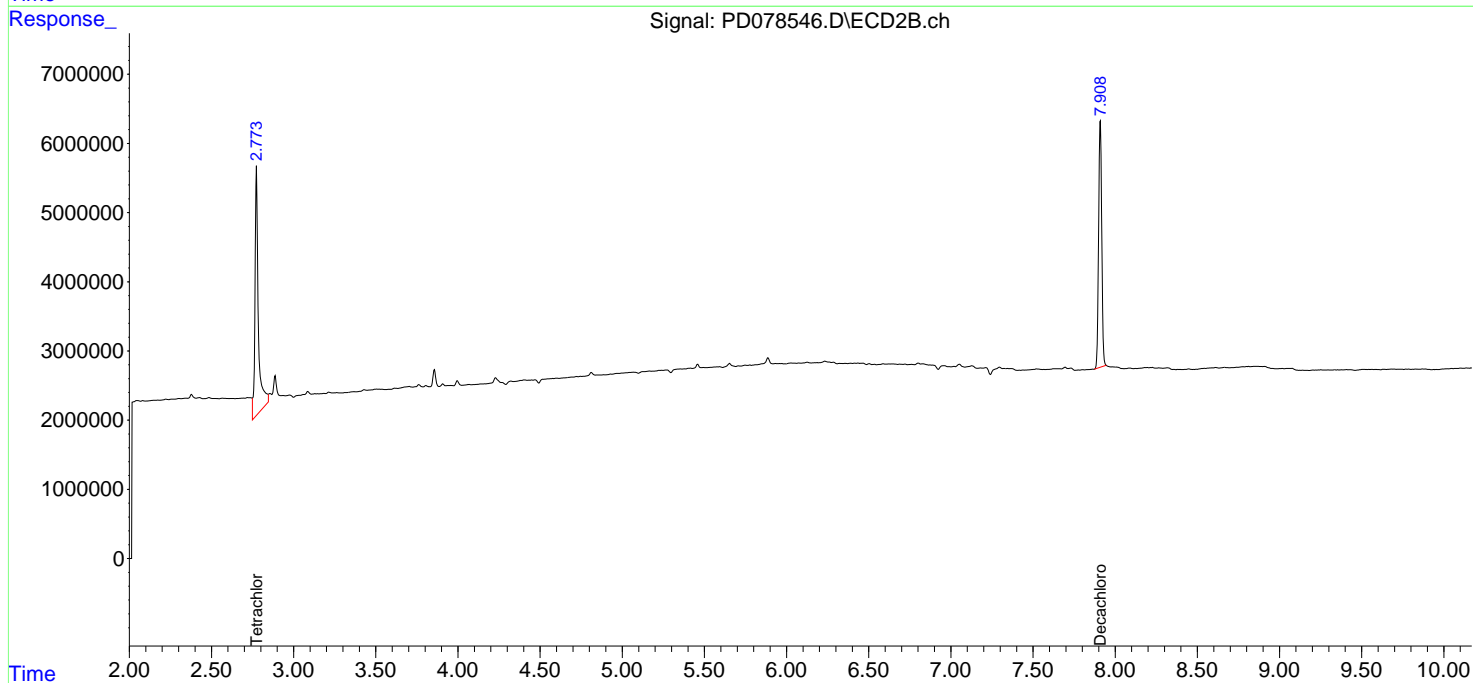
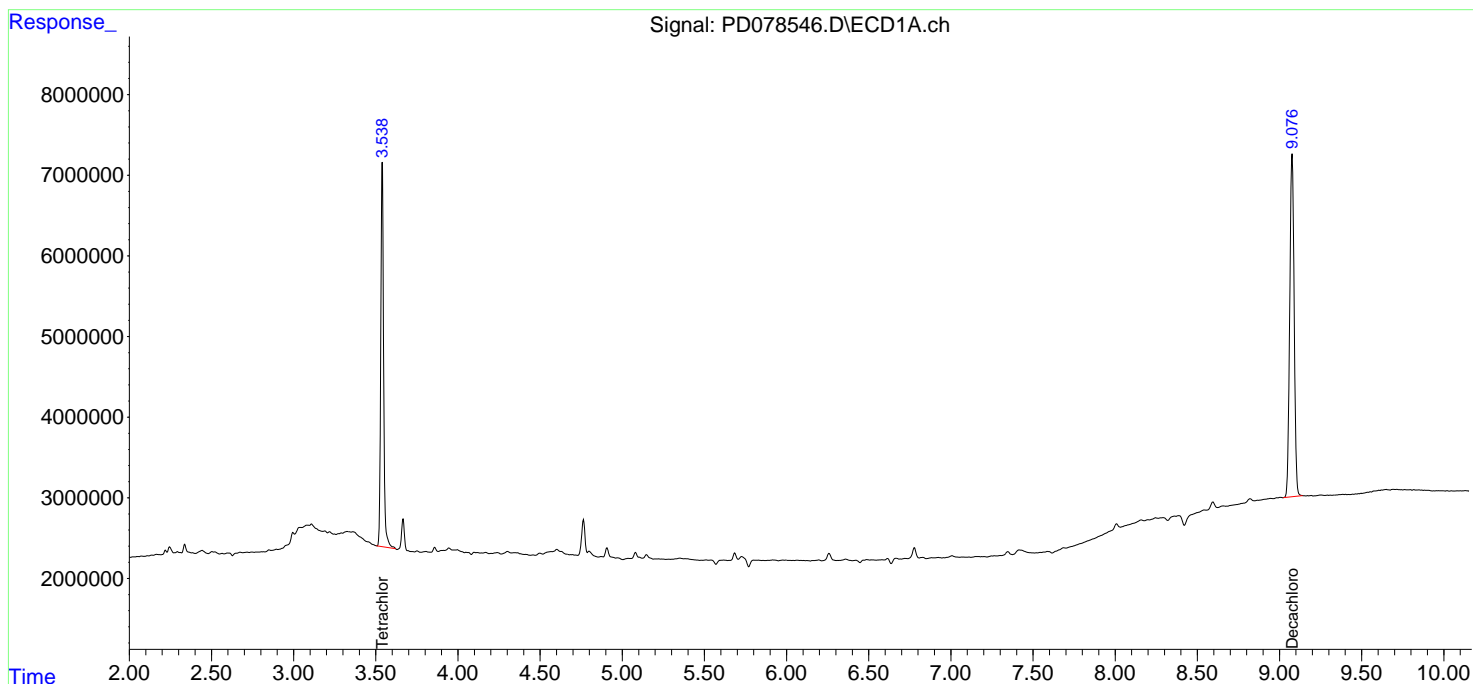
(f)=RT Delta > 1/2 Window (#)=Amounts differ by > 25% (m)=manual int.

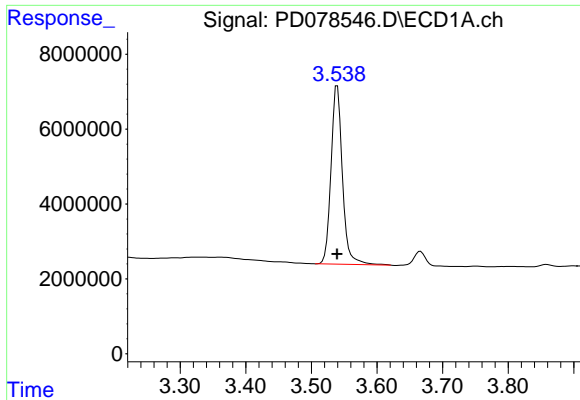
Data Path : Z:\pestpcbsrv\HPCHEM1\ECD\_D\Data\PD100323\  
 Data File : PD078546.D  
 Signal(s) : Signal #1: ECD1A.ch Signal #2: ECD2B.ch  
 Acq On : 02 Oct 2023 22:15  
 Operator : AR\AJ  
 Sample : I.BLK  
 Misc :  
 ALS Vial : 2 Sample Multiplier: 1

Instrument :  
 ECD\_D  
 ClientSampleId :  
 I.BLK

Integration File signal 1: autoint1.e  
 Integration File signal 2: autoint2.e  
 Quant Time: Oct 03 01:28:43 2023  
 Quant Method : Z:\pestpcbsrv\HPCHEM1\ECD\_D\Method\PD100323.M  
 Quant Title : GC Extractables  
 QLast Update : Tue Oct 03 01:10:04 2023  
 Response via : Initial Calibration  
 Integrator: ChemStation

Volume Inj. : 1 µl  
 Signal #1 Phase : ZB-MR1 Signal #2 Phase: ZB-MR2  
 Signal #1 Info : 30M x 0.32mm x0.5 Signal #2 Info : 30M x 0.32mm x 0.25µm

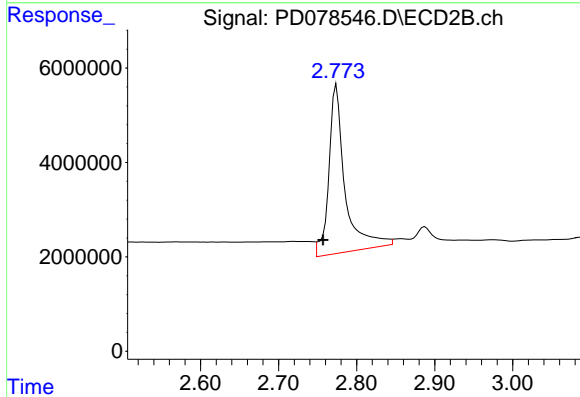




#1 Tetrachloro-m-xylene

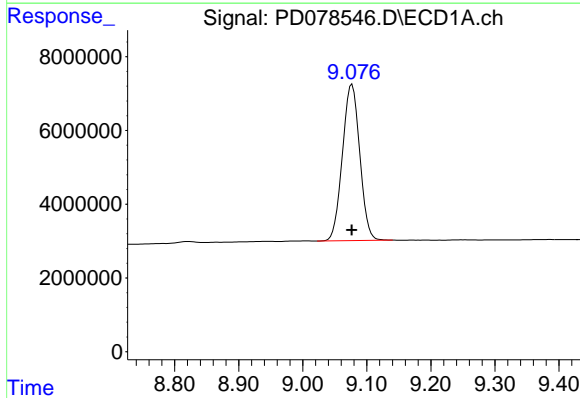
R.T.: 3.540 min  
 Delta R.T.: 0.000 min  
 Response: 57570418  
 Conc: 19.94 ng/ml

Instrument :  
 ECD\_D  
 ClientSampleId :  
 I.BLK



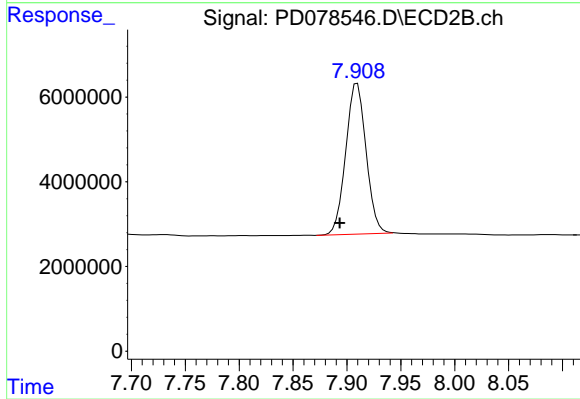
#1 Tetrachloro-m-xylene

R.T.: 2.774 min  
 Delta R.T.: 0.017 min  
 Response: 51335132  
 Conc: 25.14 ng/ml



#28 Decachlorobiphenyl

R.T.: 9.077 min  
 Delta R.T.: 0.000 min  
 Response: 79622595  
 Conc: 21.47 ng/ml



#28 Decachlorobiphenyl

R.T.: 7.910 min  
 Delta R.T.: 0.016 min  
 Response: 46837368  
 Conc: 20.64 ng/ml