

Data Path : Z:\pestpcbsrv\HPCHEM1\ECD\_D\Data\PD100324\  
 Data File : PD085886.D  
 Signal(s) : Signal #1: ECD1A.ch Signal #2: ECD2B.ch  
 Acq On : 02 Oct 2024 13:44  
 Operator : AR\AJ  
 Sample : P4019-02DL2 20X  
 Misc :  
 ALS Vial : 8 Sample Multiplier: 1

**Instrument :**

ECD\_D

**ClientSampleId :**

DDC38DL2

**Manual IntegrationsAPPROVED**

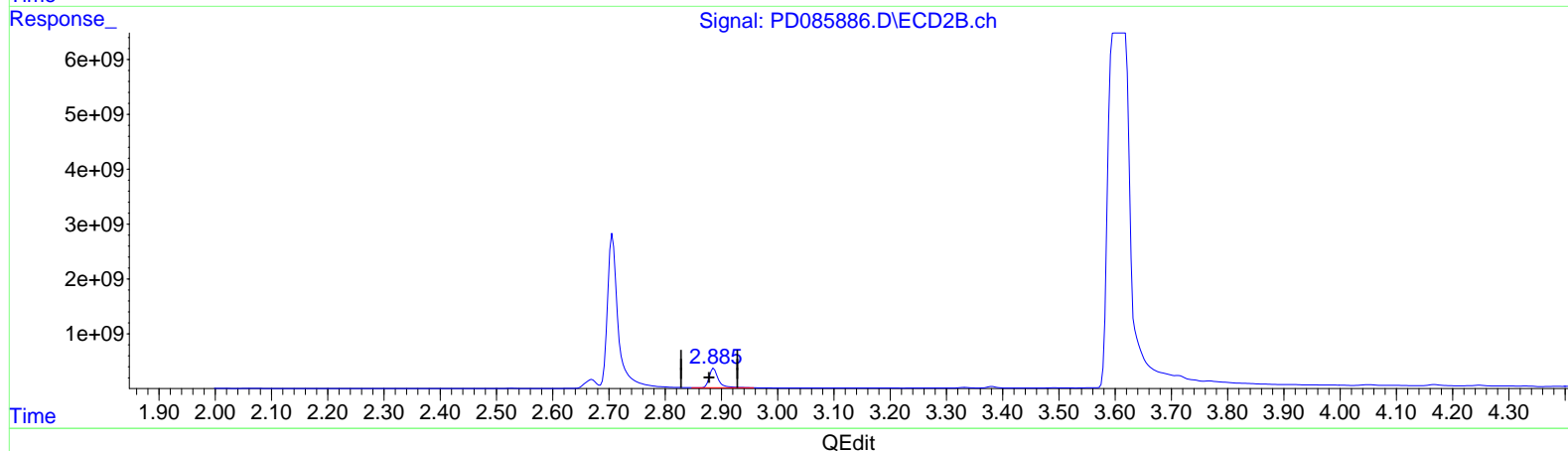
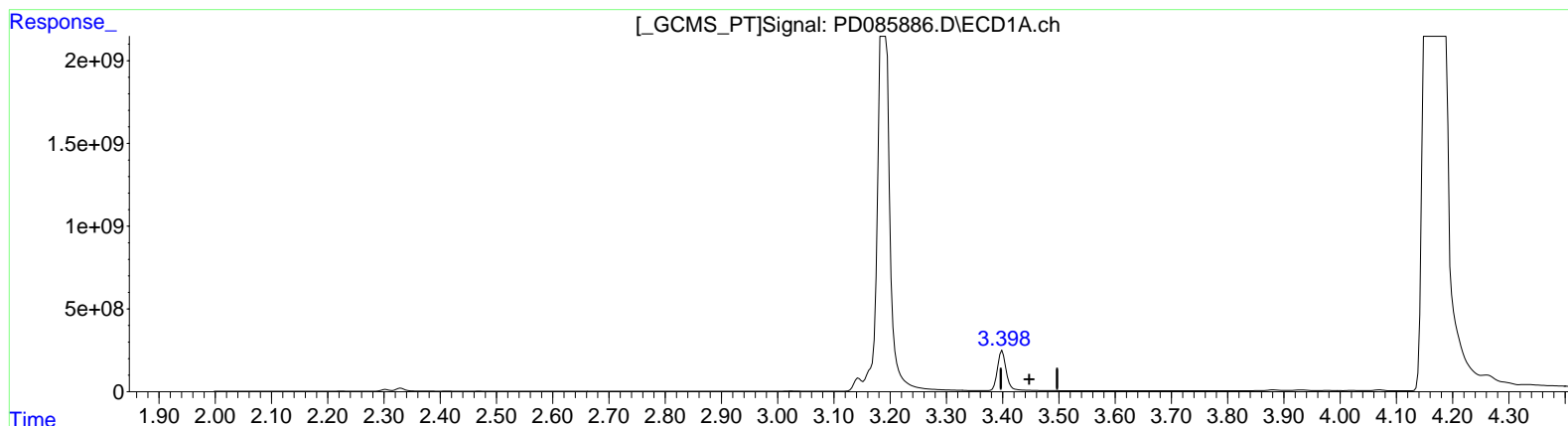
Reviewed By :Abdul  
 Mirza

10/03/2024  
 Supervised By :Ankita  
 Jodhani

10/03/2024

Integration File signal 1: autoint1.e  
 Integration File signal 2: autoint2.e  
 Quant Time: Oct 03 03:46:47 2024  
 Quant Method : Z:\pestpcbsrv\HPCHEM1\ECD\_D\Method\PD100124CLP.M  
 Quant Title : GC Extractables  
 QLast Update : Tue Oct 01 08:04:20 2024  
 Response via : Initial Calibration  
 Integrator: ChemStation

Volume Inj. : 1 µl  
 Signal #1 Phase : ZB-MR1 Signal #2 Phase: ZB-MR2  
 Signal #1 Info : 30M x 0.32mm x0.5 Signal #2 Info : 30M x 0.32mm x 0.25µm



(1) Tetrachloro-m-xylene (SA)

3.399min 268.537 ng/ml

response 307219695

(1) Tetrachloro-m-xylene #2 (SA)

2.886min 933.874 ng/ml

response 3960142909

Data Path : Z:\pestpcbsrv\HPCHEM1\ECD\_D\Data\PD100324\  
Data File : PD085886.D  
Signal(s) : Signal #1: ECD1A.ch Signal #2: ECD2B.ch  
Acq On : 02 Oct 2024 13:44  
Operator : AR\AJ  
Sample : P4019-02DL2 20X  
Misc :  
ALS Vial : 8 Sample Multiplier: 1

Instrument :  
ECD\_D  
ClientSampleId :  
DDC38DL2

Manual Integrations APPROVED

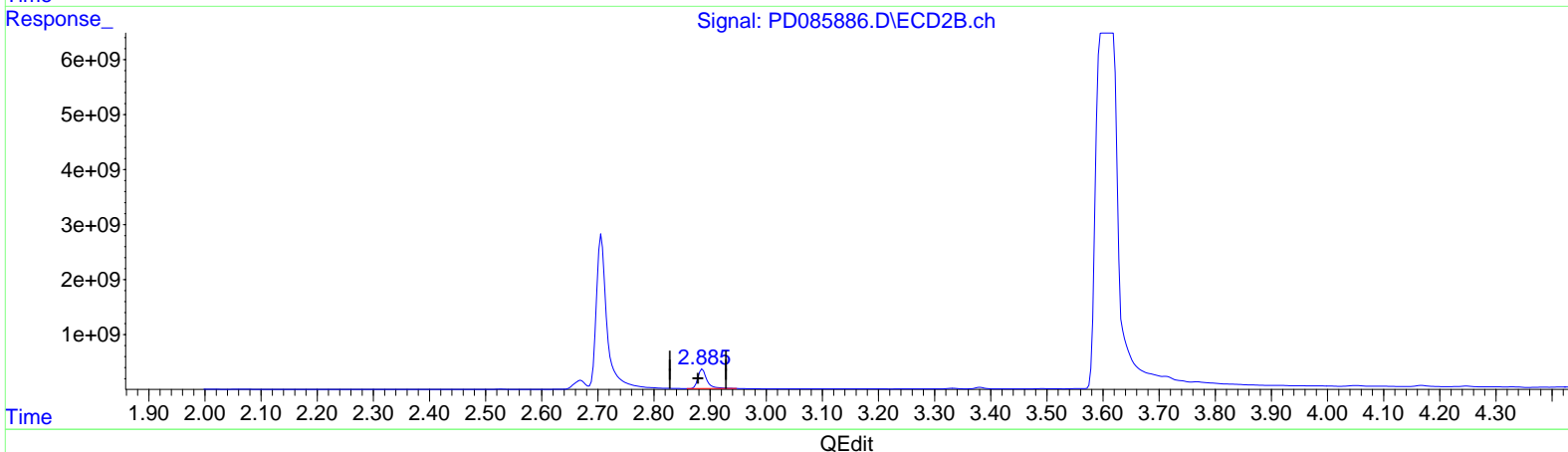
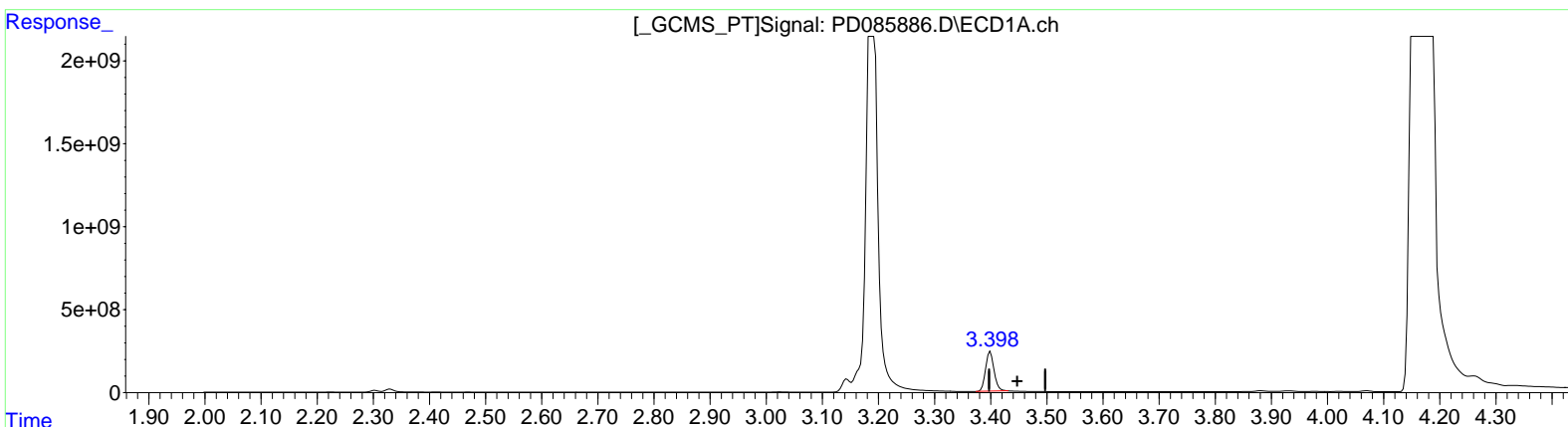
Reviewed By : Abdul  
Mirza

10/03/2024  
Supervised By : Ankita  
Jodhani

10/03/2024

Integration File signal 1: autoint1.e  
Integration File signal 2: autoint2.e  
Quant Time: Oct 03 03:46:47 2024  
Quant Method : Z:\pestpcbsrv\HPCHEM1\ECD\_D\Method\PD100124CLP.M  
Quant Title : GC Extractables  
QLast Update : Tue Oct 01 08:04:20 2024  
Response via : Initial Calibration  
Integrator: ChemStation

Volume Inj. : 1 µl  
Signal #1 Phase : ZB-MR1 Signal #2 Phase: ZB-MR2  
Signal #1 Info : 30M x 0.32mm x 0.5 Signal #2 Info : 30M x 0.32mm x 0.25µm



(1) Tetrachloro-m-xylene (SA)  
3.398min 2183.997 ng/ml m  
response 2498600282

(1) Tetrachloro-m-xylene #2 (SA)  
2.885min 925.793 ng/ml m  
response 3925874281

Data Path : Z:\pestpcbsrv\HPCHEM1\ECD\_D\Data\PD100324\  
 Data File : PD085886.D  
 Signal(s) : Signal #1: ECD1A.ch Signal #2: ECD2B.ch  
 Acq On : 02 Oct 2024 13:44  
 Operator : AR\AJ  
 Sample : P4019-02DL2 20X  
 Misc :  
 ALS Vial : 8 Sample Multiplier: 1

**Instrument :**

ECD\_D

**ClientSampleId :**

DDC38DL2

**Manual IntegrationsAPPROVED**

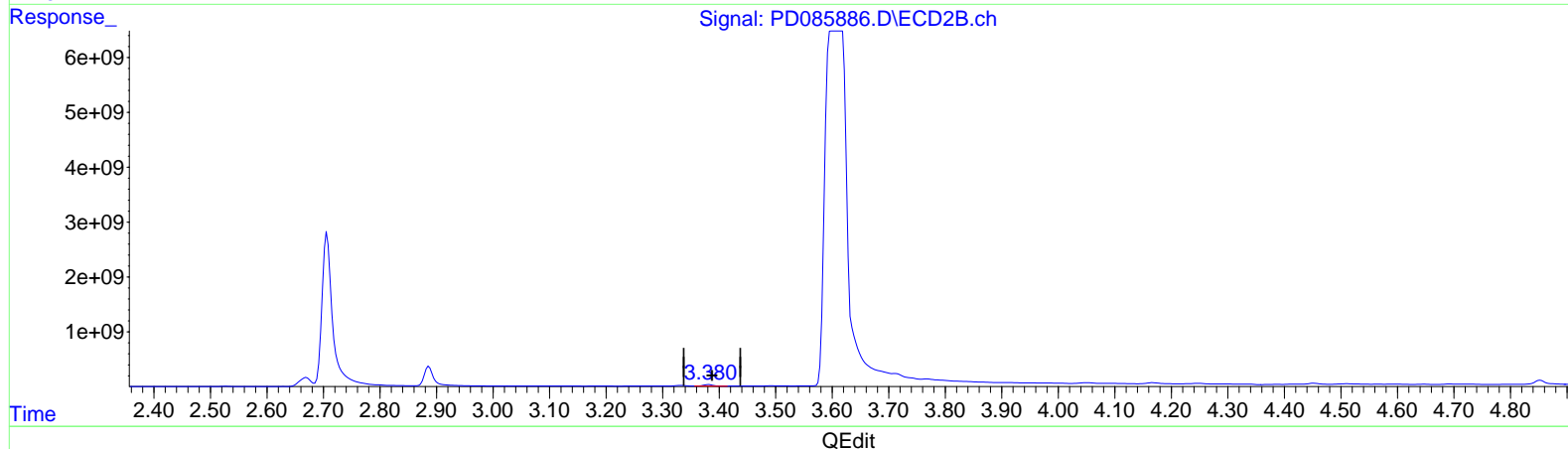
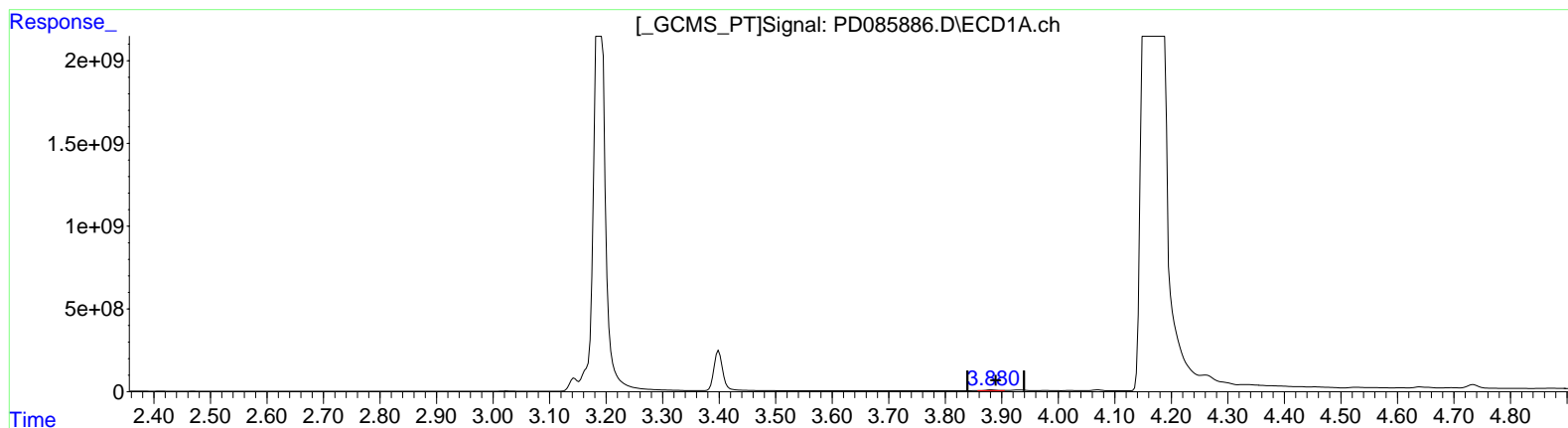
Reviewed By :Abdul  
 Mirza

10/03/2024  
 Supervised By :Ankita  
 Jodhani

10/03/2024

Integration File signal 1: autoint1.e  
 Integration File signal 2: autoint2.e  
 Quant Time: Oct 03 03:46:47 2024  
 Quant Method : Z:\pestpcbsrv\HPCHEM1\ECD\_D\Method\PD100124CLP.M  
 Quant Title : GC Extractables  
 QLast Update : Tue Oct 01 08:04:20 2024  
 Response via : Initial Calibration  
 Integrator: ChemStation

Volume Inj. : 1 µl  
 Signal #1 Phase : ZB-MR1 Signal #2 Phase: ZB-MR2  
 Signal #1 Info : 30M x 0.32mm x0.5 Signal #2 Info : 30M x 0.32mm x 0.25µm



(2) alpha-BHC (A)  
 3.882min 28.434 ng/ml  
 response 59200835

(2) alpha-BHC #2 (A)  
 3.381min 50.535 ng/ml  
 response 318852527

Data Path : Z:\pestpcbsrv\HPCHEM1\ECD\_D\Data\PD100324\  
 Data File : PD085886.D  
 Signal(s) : Signal #1: ECD1A.ch Signal #2: ECD2B.ch  
 Acq On : 02 Oct 2024 13:44  
 Operator : AR\AJ  
 Sample : P4019-02DL2 20X  
 Misc :  
 ALS Vial : 8 Sample Multiplier: 1

Instrument :  
 ECD\_D  
 ClientSampleId :  
 DDC38DL2

Manual Integrations APPROVED

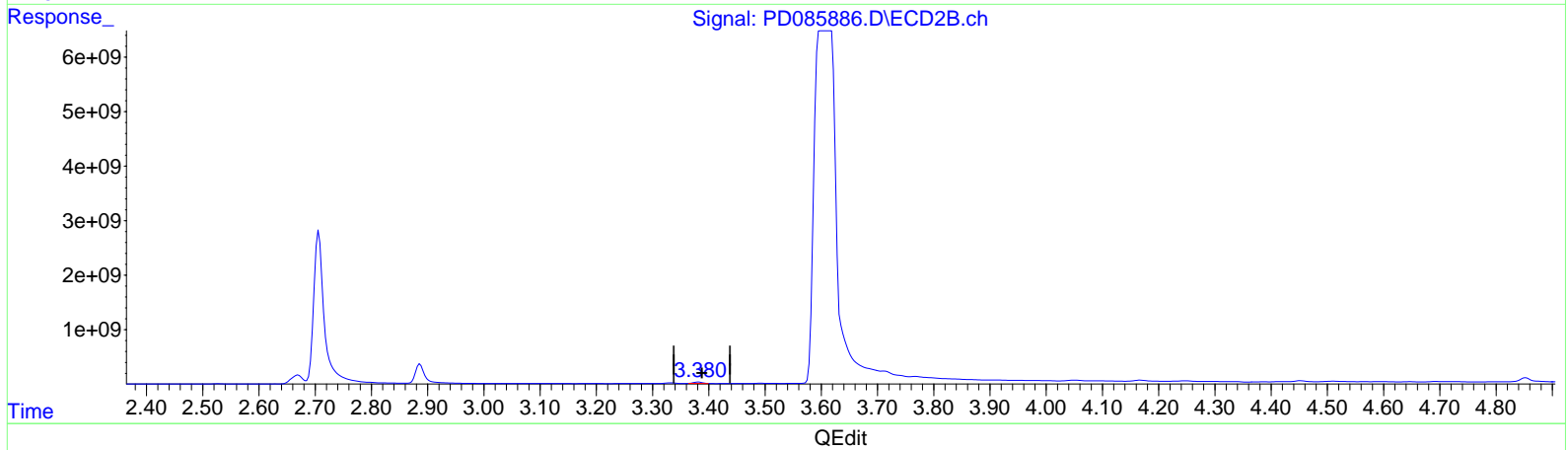
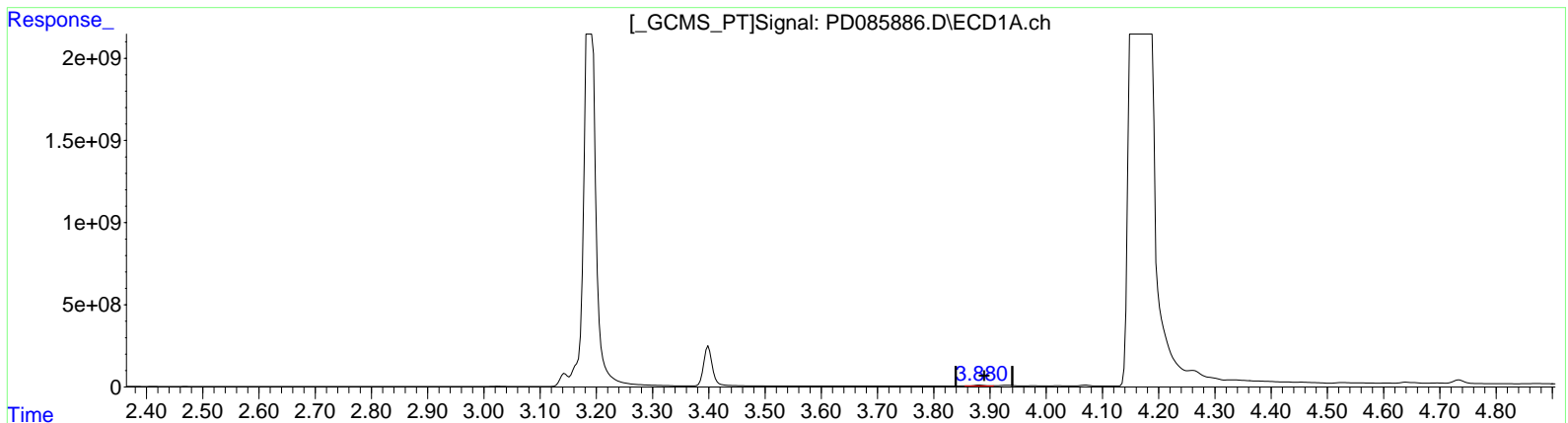
Reviewed By : Abdul  
 Mirza

10/03/2024  
 Supervised By : Ankita  
 Jodhani

10/03/2024

Integration File signal 1: autoint1.e  
 Integration File signal 2: autoint2.e  
 Quant Time: Oct 03 03:46:47 2024  
 Quant Method : Z:\pestpcbsrv\HPCHEM1\ECD\_D\Method\PD100124CLP.M  
 Quant Title : GC Extractables  
 QLast Update : Tue Oct 01 08:04:20 2024  
 Response via : Initial Calibration  
 Integrator: ChemStation

Volume Inj. : 1 µl  
 Signal #1 Phase : ZB-MR1 Signal #2 Phase: ZB-MR2  
 Signal #1 Info : 30M x 0.32mm x 0.5 Signal #2 Info : 30M x 0.32mm x 0.25µm



(2) alpha-BHC (A)  
 3.880min 32.989 ng/ml m  
 response 68682538

(2) alpha-BHC #2 (A)  
 3.380min 42.242 ng/ml m  
 response 266529639

Data Path : Z:\pestpcbsrv\HPCHEM1\ECD\_D\Data\PD100324\  
Data File : PD085886.D  
Signal(s) : Signal #1: ECD1A.ch Signal #2: ECD2B.ch  
Acq On : 02 Oct 2024 13:44  
Operator : AR\AJ  
Sample : P4019-02DL2 20X  
Misc :  
ALS Vial : 8 Sample Multiplier: 1

Instrument :

ECD\_D

ClientSampleId :

DDC38DL2

Manual IntegrationsAPPROVED

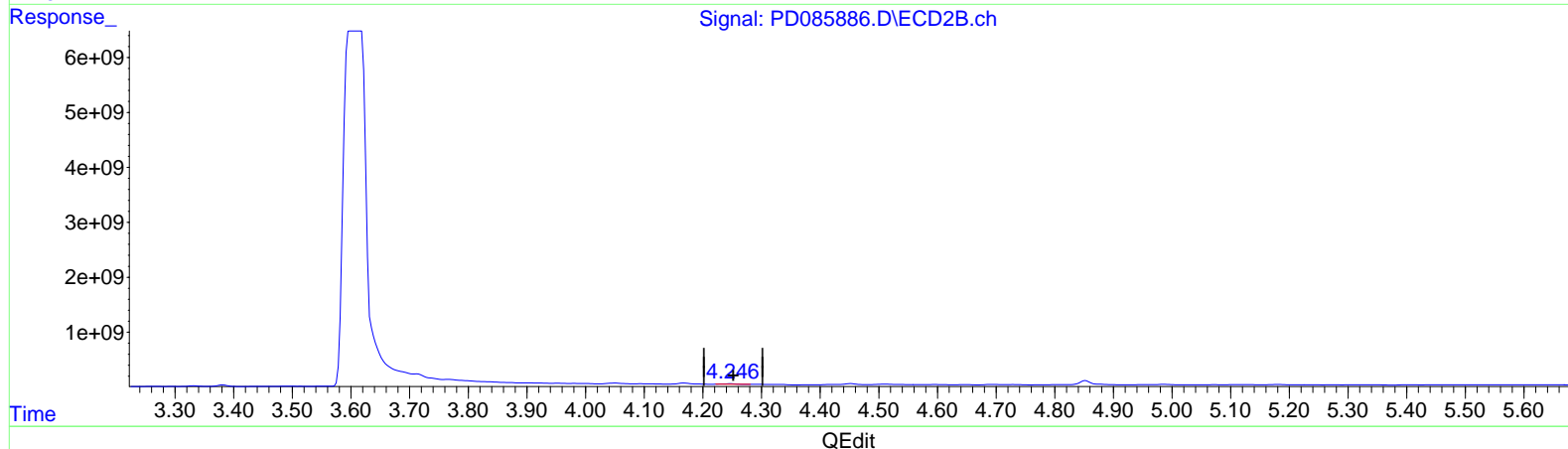
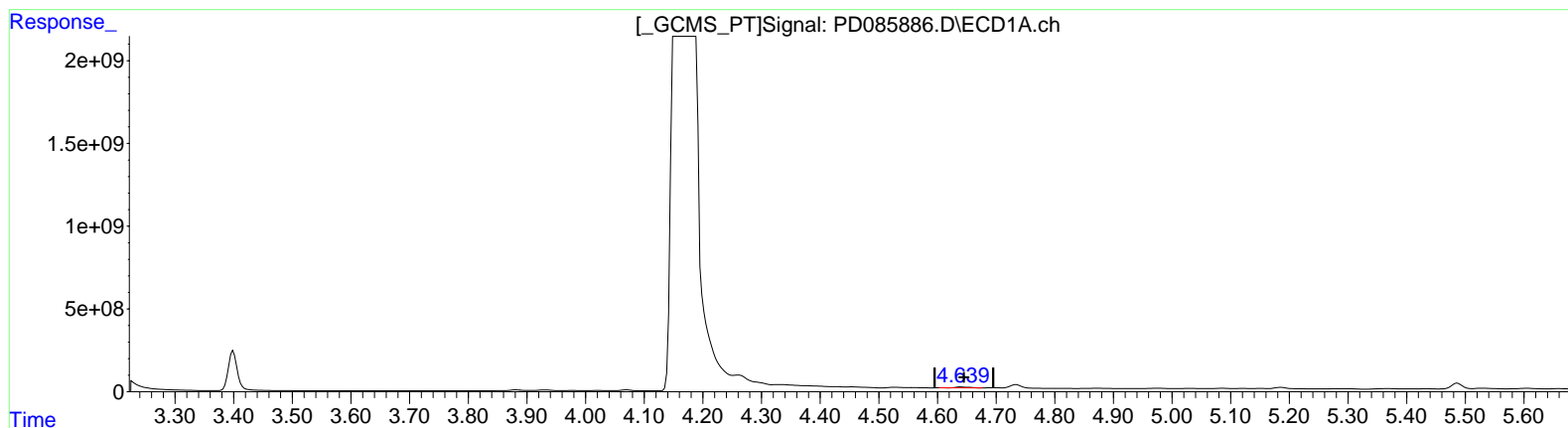
Reviewed By :Abdul  
Mirza

10/03/2024  
Supervised By :Ankita  
Jodhani

10/03/2024

Integration File signal 1: autoint1.e  
Integration File signal 2: autoint2.e  
Quant Time: Oct 03 03:46:47 2024  
Quant Method : Z:\pestpcbsrv\HPCHEM1\ECD\_D\Method\PD100124CLP.M  
Quant Title : GC Extractables  
QLast Update : Tue Oct 01 08:04:20 2024  
Response via : Initial Calibration  
Integrator: ChemStation

Volume Inj. : 1 µl  
Signal #1 Phase : ZB-MR1 Signal #2 Phase: ZB-MR2  
Signal #1 Info : 30M x 0.32mm x0.5 Signal #2 Info : 30M x 0.32mm x 0.25µm



(7) delta-BHC (B)  
4.641min 46.258 ng/ml  
response 88881064

(7) delta-BHC #2 (B)  
4.248min 24.641 ng/ml  
response 146232335

Data Path : Z:\pestpcbsrv\HPCHEM1\ECD\_D\Data\PD100324\  
Data File : PD085886.D  
Signal(s) : Signal #1: ECD1A.ch Signal #2: ECD2B.ch  
Acq On : 02 Oct 2024 13:44  
Operator : AR\AJ  
Sample : P4019-02DL2 20X  
Misc :  
ALS Vial : 8 Sample Multiplier: 1

Instrument :

ECD\_D

ClientSampleId :

DDC38DL2

Manual IntegrationsAPPROVED

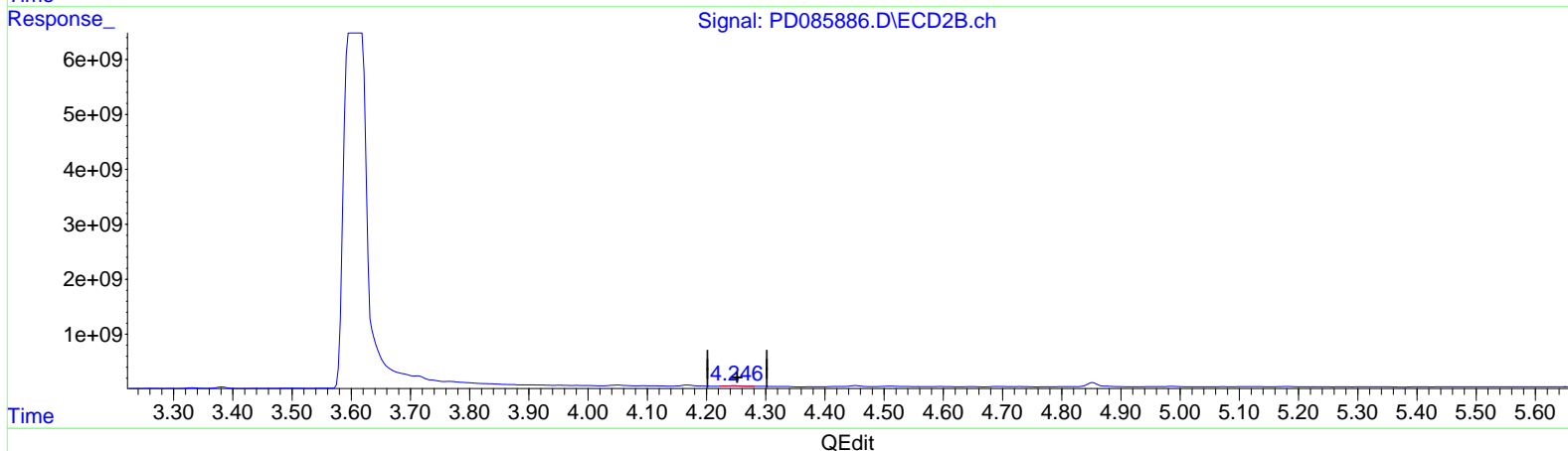
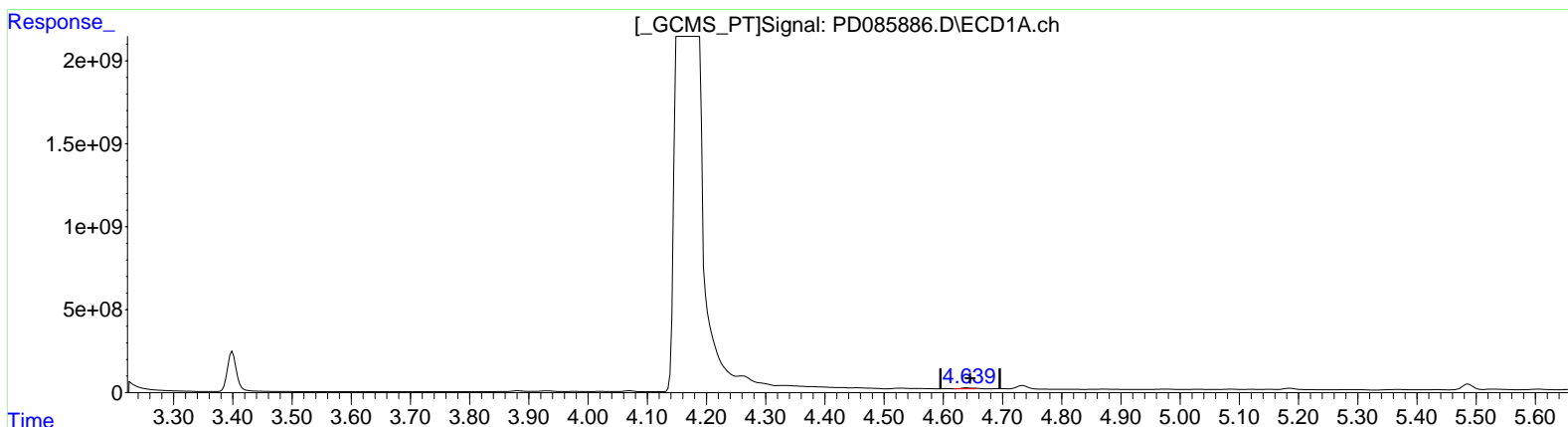
Reviewed By :Abdul  
Mirza

10/03/2024  
Supervised By :Ankita  
Jodhani

10/03/2024

Integration File signal 1: autoint1.e  
Integration File signal 2: autoint2.e  
Quant Time: Oct 03 03:46:47 2024  
Quant Method : Z:\pestpcbsrv\HPCHEM1\ECD\_D\Method\PD100124CLP.M  
Quant Title : GC Extractables  
QLast Update : Tue Oct 01 08:04:20 2024  
Response via : Initial Calibration  
Integrator: ChemStation

Volume Inj. : 1 µl  
Signal #1 Phase : ZB-MR1 Signal #2 Phase: ZB-MR2  
Signal #1 Info : 30M x 0.32mm x0.5 Signal #2 Info : 30M x 0.32mm x 0.25µm



(7) delta-BHC (B)  
4.639min 48.394 ng/ml m  
response 92985195

(7) delta-BHC #2 (B)  
4.248min 24.641 ng/ml  
response 146232335

Data Path : Z:\pestpcbsrv\HPCHEM1\ECD\_D\Data\PD100324\  
 Data File : PD085886.D  
 Signal(s) : Signal #1: ECD1A.ch Signal #2: ECD2B.ch  
 Acq On : 02 Oct 2024 13:44  
 Operator : AR\AJ  
 Sample : P4019-02DL2 20X  
 Misc :  
 ALS Vial : 8 Sample Multiplier: 1

**Instrument :**

ECD\_D

**ClientSampleId :**

DDC38DL2

**Manual IntegrationsAPPROVED**

Reviewed By :Abdul  
 Mirza

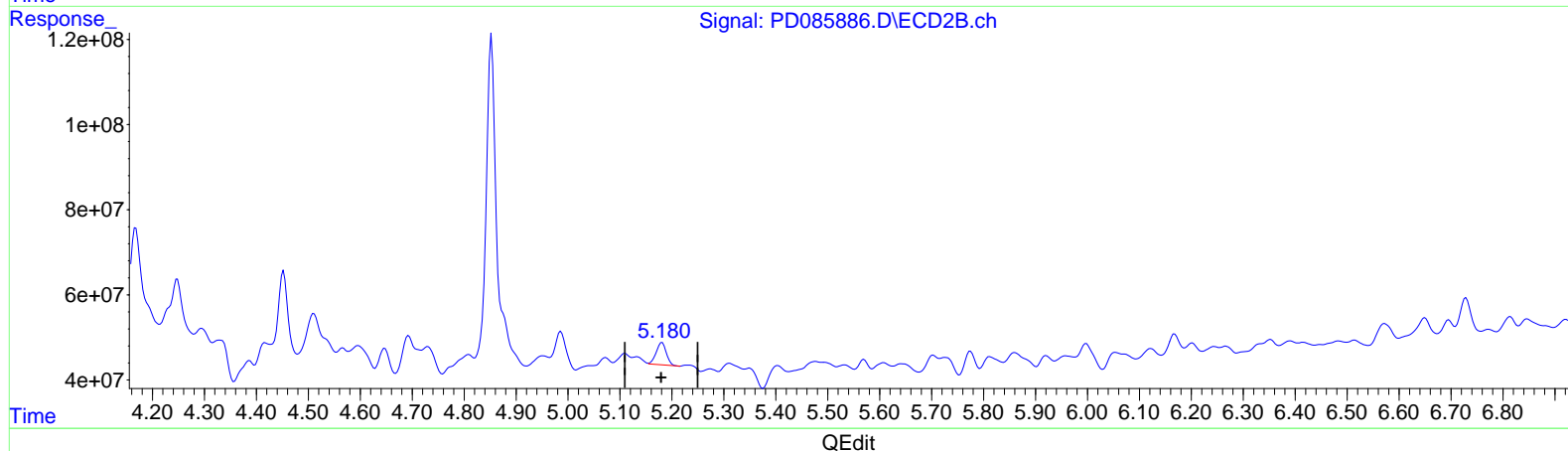
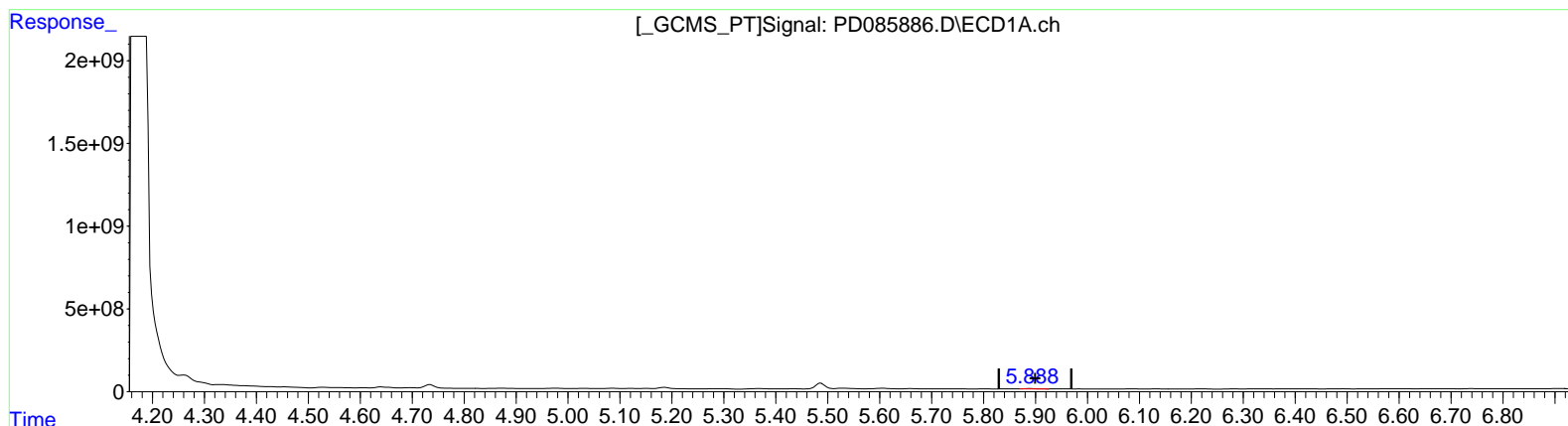
10/03/2024

Supervised By :Ankita  
 Jodhani

10/03/2024

Integration File signal 1: autoint1.e  
 Integration File signal 2: autoint2.e  
 Quant Time: Oct 03 03:46:47 2024  
 Quant Method : Z:\pestpcbsrv\HPCHEM1\ECD\_D\Method\PD100124CLP.M  
 Quant Title : GC Extractables  
 QLast Update : Tue Oct 01 08:04:20 2024  
 Response via : Initial Calibration  
 Integrator: ChemStation

Volume Inj. : 1 µl  
 Signal #1 Phase : ZB-MR1 Signal #2 Phase: ZB-MR2  
 Signal #1 Info : 30M x 0.32mm x0.5 Signal #2 Info : 30M x 0.32mm x 0.25µm



(11) cis-Chlordane (B)

5.890min 10.622 ng/ml

response 20494647

(11) cis-Chlordane #2 (B)

5.181min 12.982 ng/ml

response 71283807

Data Path : Z:\pestpcbsrv\HPCHEM1\ECD\_D\Data\PD100324\  
 Data File : PD085886.D  
 Signal(s) : Signal #1: ECD1A.ch Signal #2: ECD2B.ch  
 Acq On : 02 Oct 2024 13:44  
 Operator : AR\AJ  
 Sample : P4019-02DL2 20X  
 Misc :  
 ALS Vial : 8 Sample Multiplier: 1

**Instrument :**

ECD\_D

**ClientSampleId :**

DDC38DL2

**Manual IntegrationsAPPROVED**

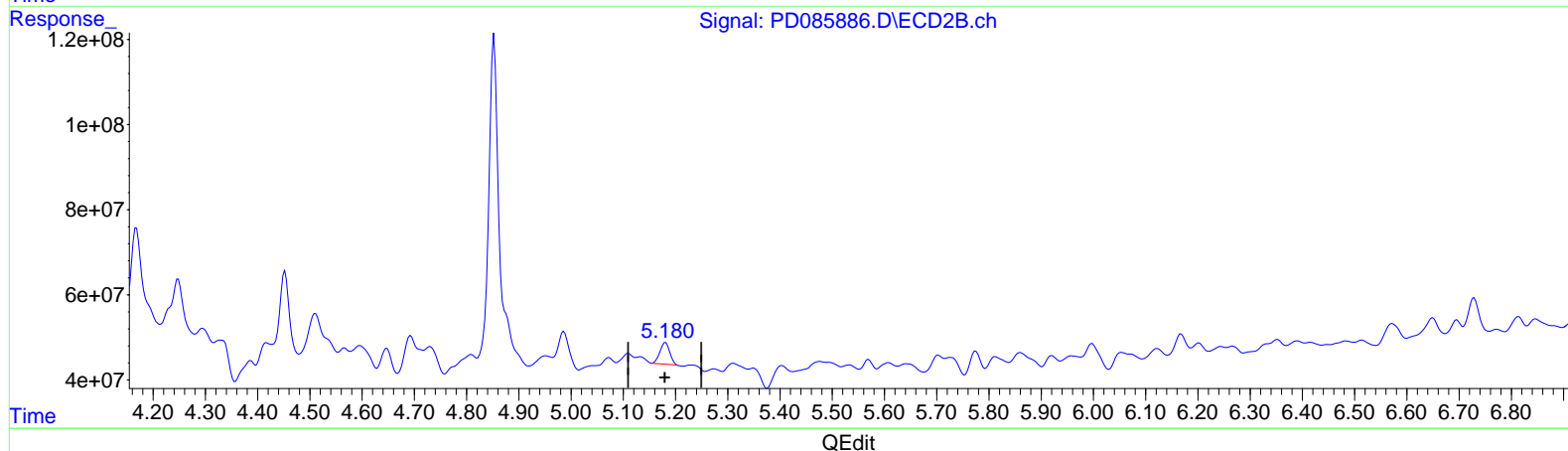
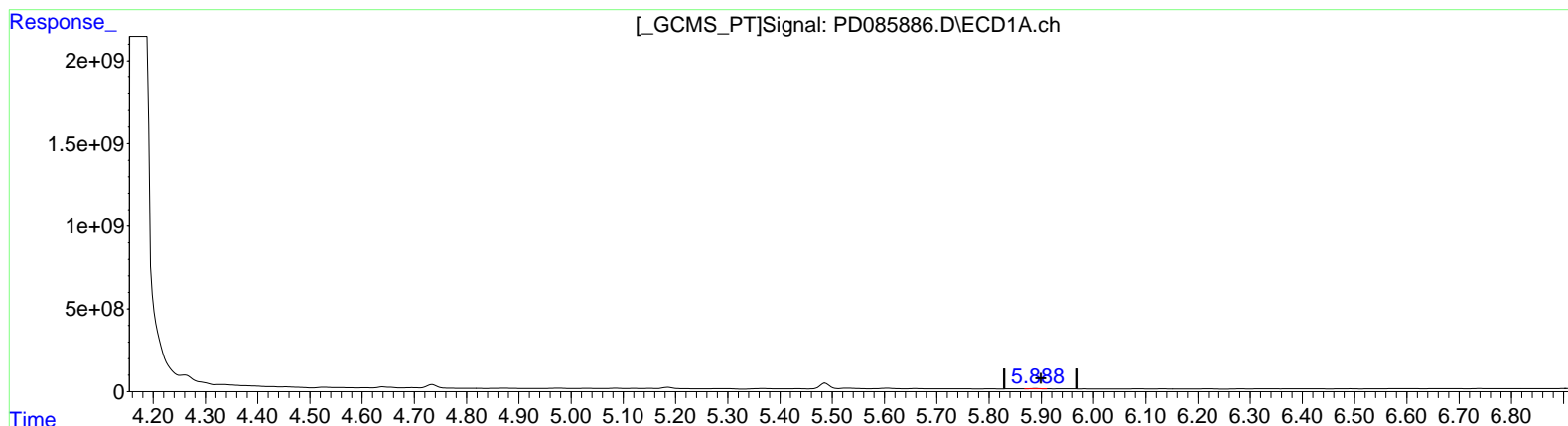
Reviewed By :Abdul  
 Mirza

10/03/2024  
 Supervised By :Ankita  
 Jodhani

10/03/2024

Integration File signal 1: autoint1.e  
 Integration File signal 2: autoint2.e  
 Quant Time: Oct 03 03:46:47 2024  
 Quant Method : Z:\pestpcbsrv\HPCHEM1\ECD\_D\Method\PD100124CLP.M  
 Quant Title : GC Extractables  
 QLast Update : Tue Oct 01 08:04:20 2024  
 Response via : Initial Calibration  
 Integrator: ChemStation

Volume Inj. : 1 µl  
 Signal #1 Phase : ZB-MR1 Signal #2 Phase: ZB-MR2  
 Signal #1 Info : 30M x 0.32mm x0.5 Signal #2 Info : 30M x 0.32mm x 0.25µm



(11) cis-Chlordane (B)  
 5.888min 10.539 ng/ml m  
 response 20334281

(11) cis-Chlordane #2 (B)  
 5.180min 12.021 ng/ml m  
 response 66009341



Data Path : Z:\pestpcbsrv\HPCHEM1\ECD\_D\Data\PD100324\  
Data File : PD085886.D  
Signal(s) : Signal #1: ECD1A.ch Signal #2: ECD2B.ch  
Acq On : 02 Oct 2024 13:44  
Operator : AR\AJ  
Sample : P4019-02DL2 20X  
Misc :  
ALS Vial : 8 Sample Multiplier: 1

Instrument :

ECD\_D

ClientSampleId :

DDC38DL2

Manual IntegrationsAPPROVED

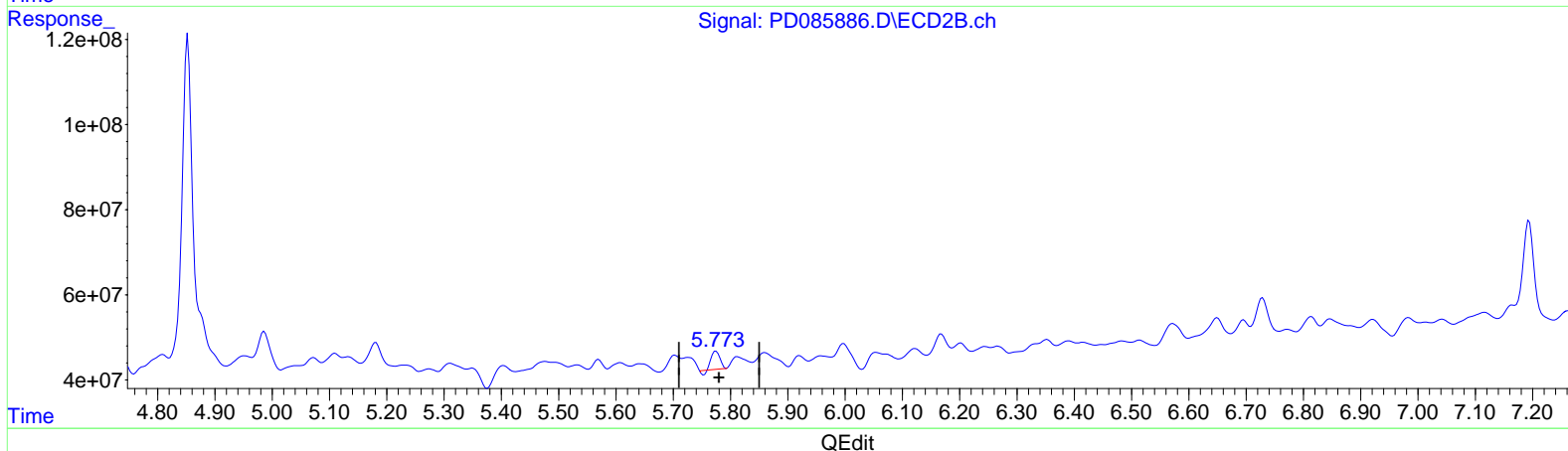
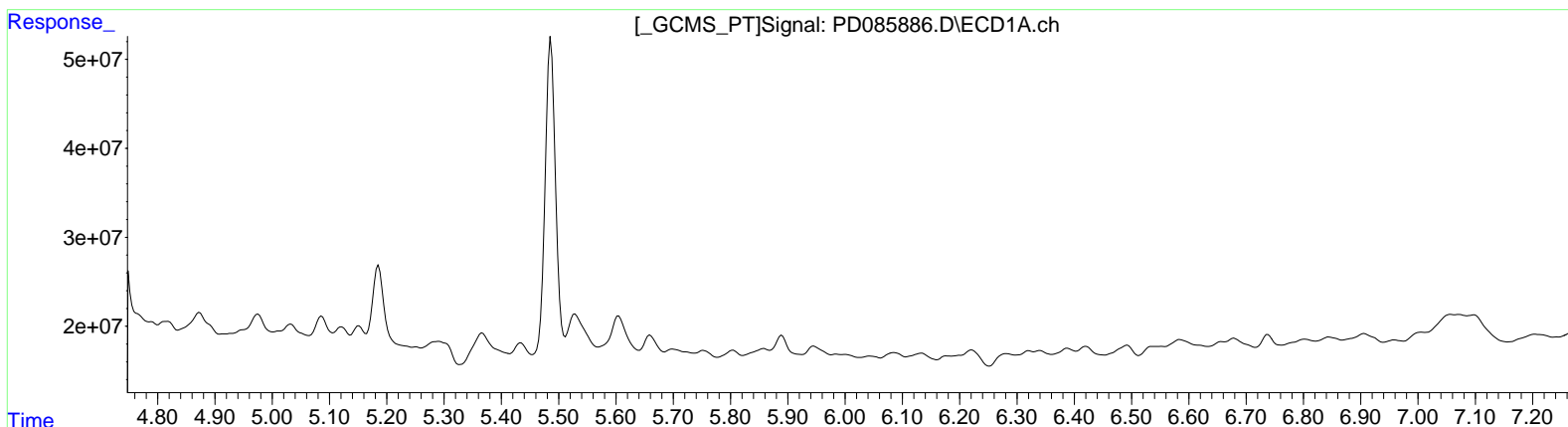
Reviewed By :Abdul  
Mirza

10/03/2024  
Supervised By :Ankita  
Jodhani

10/03/2024

Integration File signal 1: autoint1.e  
Integration File signal 2: autoint2.e  
Quant Time: Oct 03 03:46:47 2024  
Quant Method : Z:\pestpcbsrv\HPCHEM1\ECD\_D\Method\PD100124CLP.M  
Quant Title : GC Extractables  
QLast Update : Tue Oct 01 08:04:20 2024  
Response via : Initial Calibration  
Integrator: ChemStation

Volume Inj. : 1 µl  
Signal #1 Phase : ZB-MR1 Signal #2 Phase: ZB-MR2  
Signal #1 Info : 30M x 0.32mm x0.5 Signal #2 Info : 30M x 0.32mm x 0.25µm



(14) Endrin (MA)  
0.000min 0.000 ng/ml  
response 0

(14) Endrin #2 (MA)  
5.775min 8.450 ng/ml  
response 40454528

Data Path : Z:\pestpcbsrv\HPCHEM1\ECD\_D\Data\PD100324\  
Data File : PD085886.D  
Signal(s) : Signal #1: ECD1A.ch Signal #2: ECD2B.ch  
Acq On : 02 Oct 2024 13:44  
Operator : AR\AJ  
Sample : P4019-02DL2 20X  
Misc :  
ALS Vial : 8 Sample Multiplier: 1

Instrument :

ECD\_D

ClientSampleId :

DDC38DL2

Manual IntegrationsAPPROVED

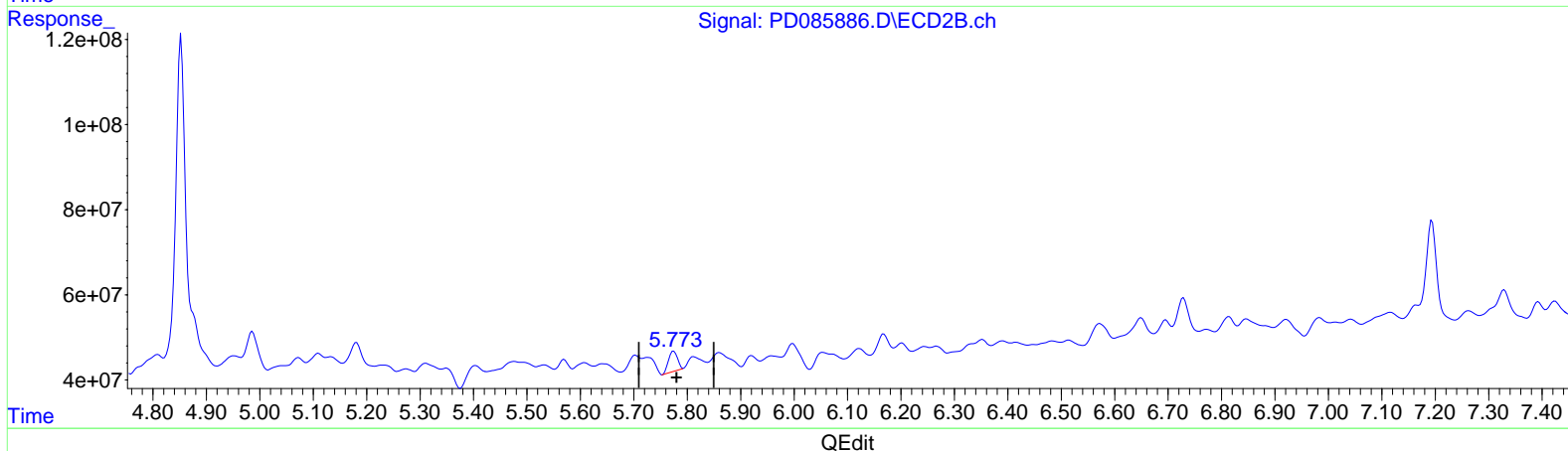
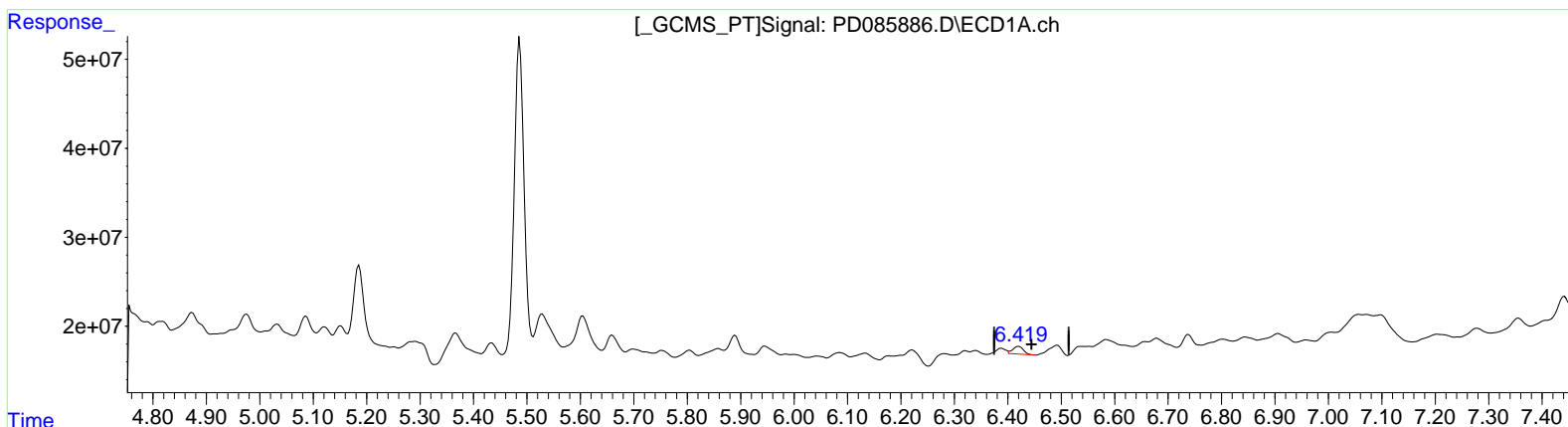
Reviewed By :Abdul  
Mirza

10/03/2024  
Supervised By :Ankita  
Jodhani

10/03/2024

Integration File signal 1: autoint1.e  
Integration File signal 2: autoint2.e  
Quant Time: Oct 03 03:46:47 2024  
Quant Method : Z:\pestpcbsrv\HPCHEM1\ECD\_D\Method\PD100124CLP.M  
Quant Title : GC Extractables  
QLast Update : Tue Oct 01 08:04:20 2024  
Response via : Initial Calibration  
Integrator: ChemStation

Volume Inj. : 1 µl  
Signal #1 Phase : ZB-MR1 Signal #2 Phase: ZB-MR2  
Signal #1 Info : 30M x 0.32mm x0.5 Signal #2 Info : 30M x 0.32mm x 0.25µm



(14) Endrin (MA)  
6.419min 7.513 ng/ml m  
response 11935005

(14) Endrin #2 (MA)  
5.773min 11.709 ng/ml m  
response 56061322

Data Path : Z:\pestpcbsrv\HPCHEM1\ECD\_D\Data\PD100324\  
 Data File : PD085886.D  
 Signal(s) : Signal #1: ECD1A.ch Signal #2: ECD2B.ch  
 Acq On : 02 Oct 2024 13:44  
 Operator : AR\AJ  
 Sample : P4019-02DL2 20X  
 Misc :  
 ALS Vial : 8 Sample Multiplier: 1

**Instrument :**

ECD\_D

**ClientSampleId :**

DDC38DL2

**Manual IntegrationsAPPROVED**

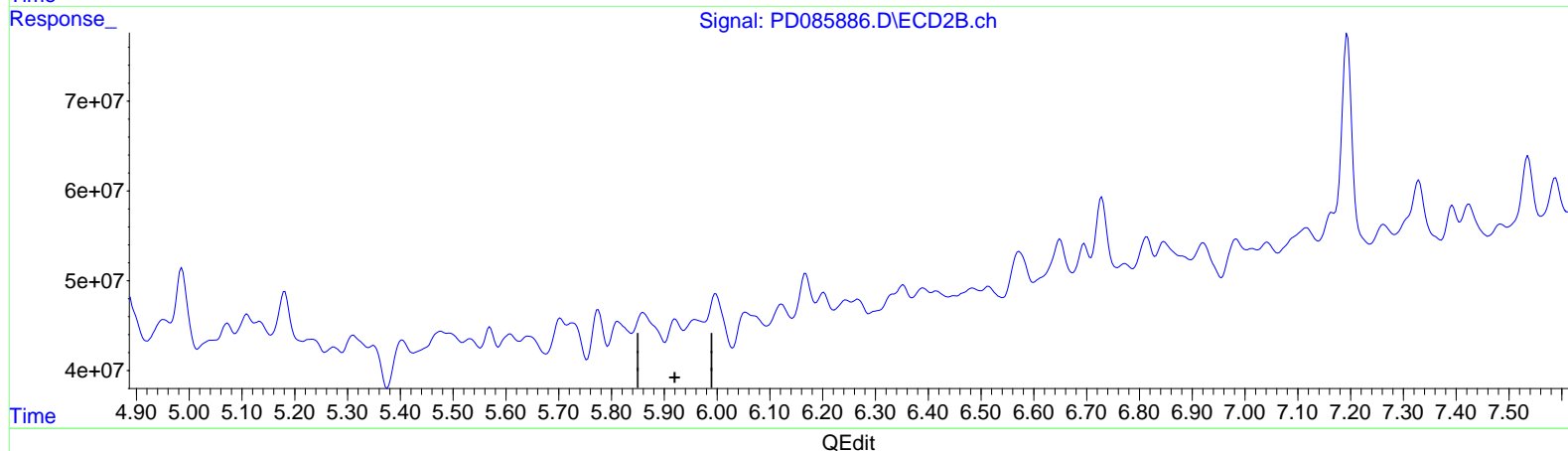
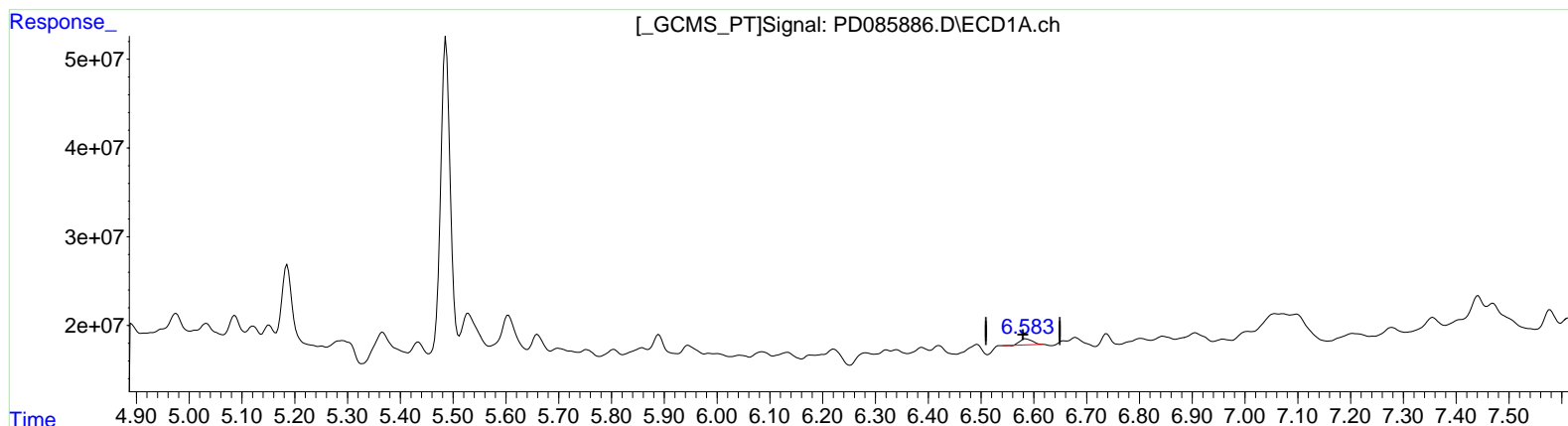
Reviewed By :Abdul  
 Mirza

10/03/2024  
 Supervised By :Ankita  
 Jodhani

10/03/2024

Integration File signal 1: autoint1.e  
 Integration File signal 2: autoint2.e  
 Quant Time: Oct 03 03:46:47 2024  
 Quant Method : Z:\pestpcbsrv\HPCHEM1\ECD\_D\Method\PD100124CLP.M  
 Quant Title : GC Extractables  
 QLast Update : Tue Oct 01 08:04:20 2024  
 Response via : Initial Calibration  
 Integrator: ChemStation

Volume Inj. : 1 µl  
 Signal #1 Phase : ZB-MR1 Signal #2 Phase: ZB-MR2  
 Signal #1 Info : 30M x 0.32mm x0.5 Signal #2 Info : 30M x 0.32mm x 0.25µm



(16) 4,4'-DDD (A)  
 6.586min 8.743 ng/ml  
 response 10903306

(16) 4,4'-DDD #2 (A)  
 5.921min -0.610 ng/ml  
 response -2387776

Data Path : Z:\pestpcbsrv\HPCHEM1\ECD\_D\Data\PD100324\  
 Data File : PD085886.D  
 Signal(s) : Signal #1: ECD1A.ch Signal #2: ECD2B.ch  
 Acq On : 02 Oct 2024 13:44  
 Operator : AR\AJ  
 Sample : P4019-02DL2 20X  
 Misc :  
 ALS Vial : 8 Sample Multiplier: 1

**Instrument :**

ECD\_D

**ClientSampleId :**

DDC38DL2

**Manual IntegrationsAPPROVED**

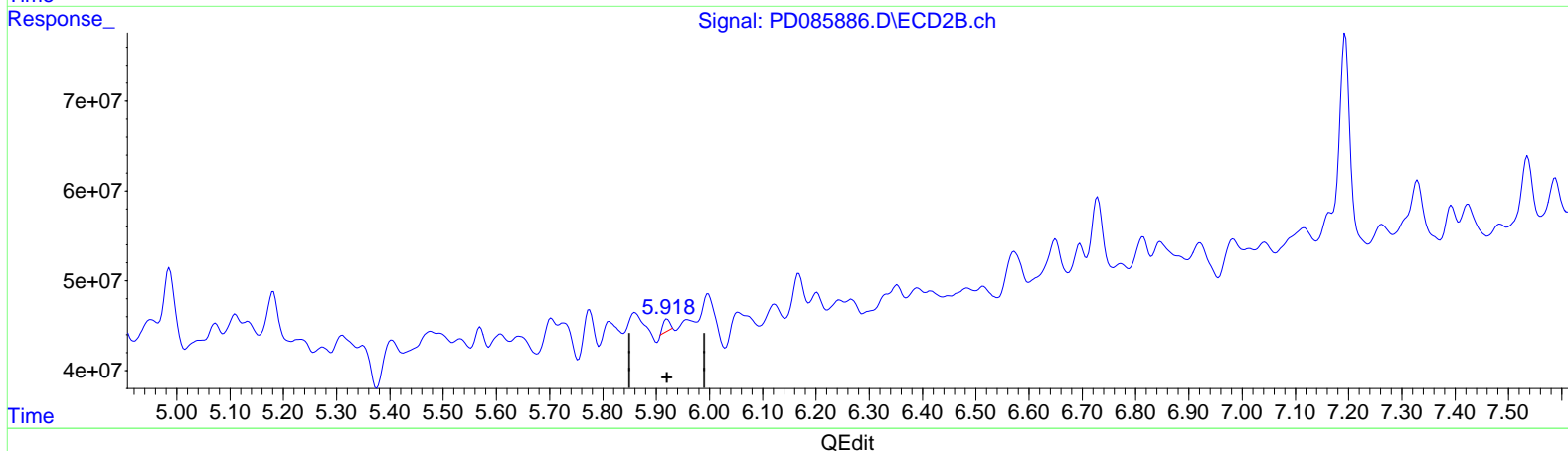
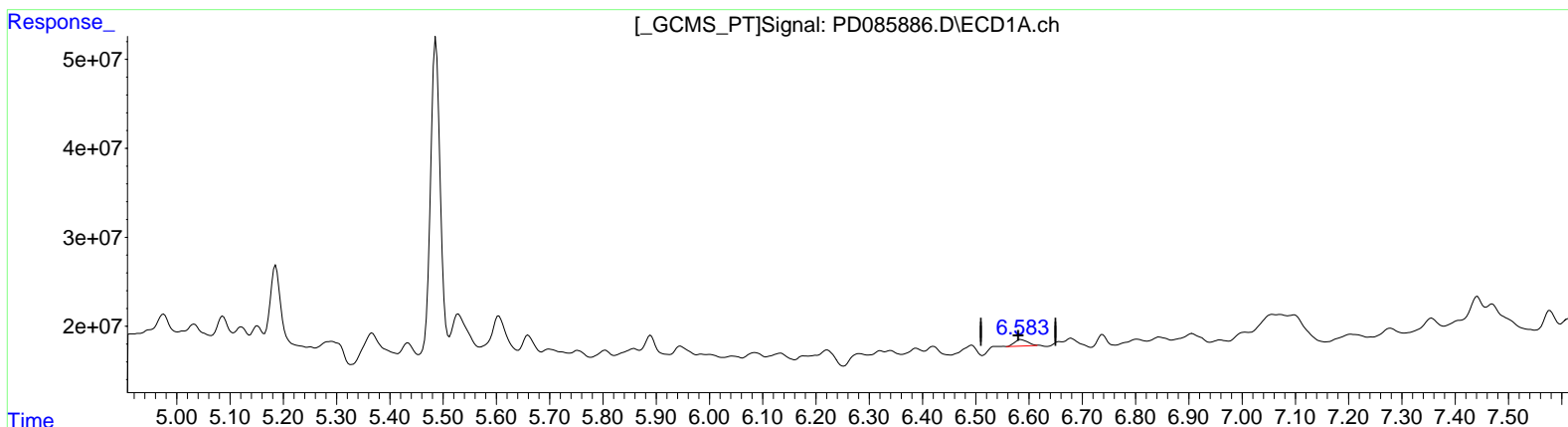
Reviewed By :Abdul  
 Mirza

10/03/2024  
 Supervised By :Ankita  
 Jodhani

10/03/2024

Integration File signal 1: autoint1.e  
 Integration File signal 2: autoint2.e  
 Quant Time: Oct 03 03:46:47 2024  
 Quant Method : Z:\pestpcbsrv\HPCHEM1\ECD\_D\Method\PD100124CLP.M  
 Quant Title : GC Extractables  
 QLast Update : Tue Oct 01 08:04:20 2024  
 Response via : Initial Calibration  
 Integrator: ChemStation

Volume Inj. : 1 µl  
 Signal #1 Phase : ZB-MR1 Signal #2 Phase: ZB-MR2  
 Signal #1 Info : 30M x 0.32mm x0.5 Signal #2 Info : 30M x 0.32mm x 0.25µm



(16) 4,4'-DDD (A)  
 6.583min 10.113 ng/ml m  
 response 12611657

(16) 4,4'-DDD #2 (A)  
 5.918min 3.102 ng/ml m  
 response 12133402

Data Path : Z:\pestpcbsrv\HPCHEM1\ECD\_D\Data\PD100324\  
 Data File : PD085886.D  
 Signal(s) : Signal #1: ECD1A.ch Signal #2: ECD2B.ch  
 Acq On : 02 Oct 2024 13:44  
 Operator : AR\AJ  
 Sample : P4019-02DL2 20X  
 Misc :  
 ALS Vial : 8 Sample Multiplier: 1

**Instrument :**

ECD\_D

**ClientSampleId :**

DDC38DL2

**Manual IntegrationsAPPROVED**

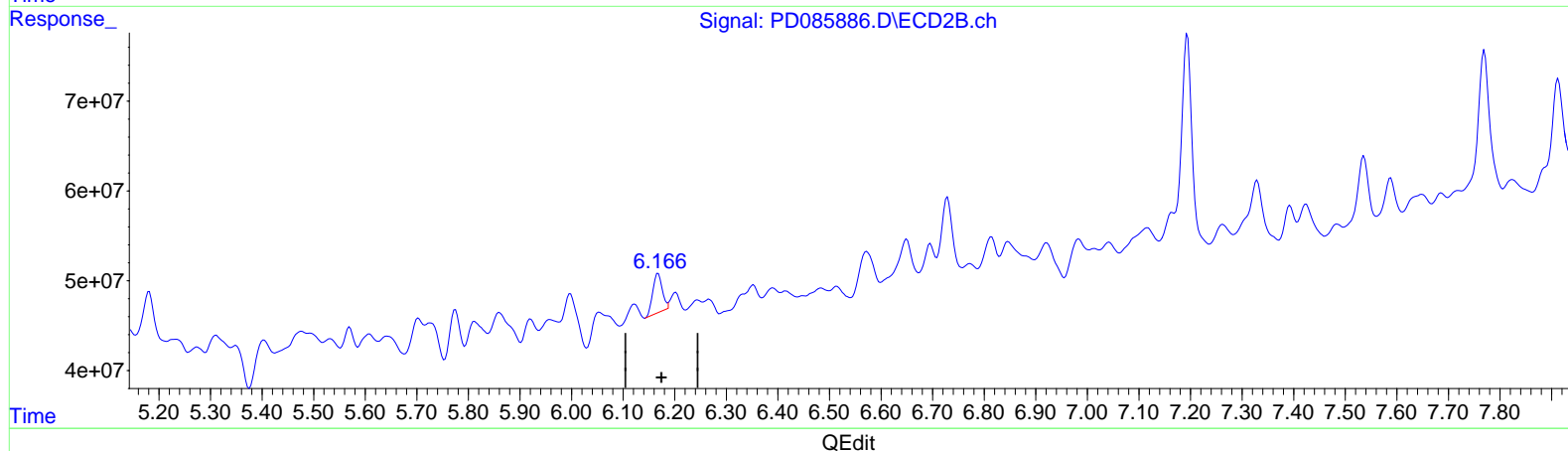
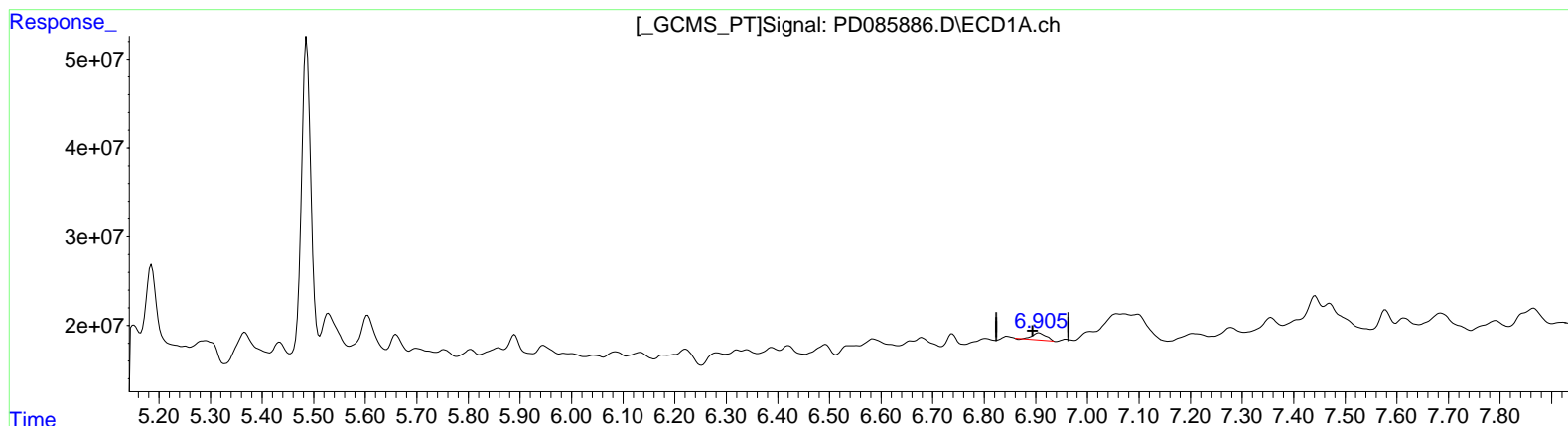
Reviewed By :Abdul  
 Mirza

10/03/2024  
 Supervised By :Ankita  
 Jodhani

10/03/2024

Integration File signal 1: autoint1.e  
 Integration File signal 2: autoint2.e  
 Quant Time: Oct 03 03:46:47 2024  
 Quant Method : Z:\pestpcbsrv\HPCHEM1\ECD\_D\Method\PD100124CLP.M  
 Quant Title : GC Extractables  
 QLast Update : Tue Oct 01 08:04:20 2024  
 Response via : Initial Calibration  
 Integrator: ChemStation

Volume Inj. : 1 µl  
 Signal #1 Phase : ZB-MR1 Signal #2 Phase: ZB-MR2  
 Signal #1 Info : 30M x 0.32mm x0.5 Signal #2 Info : 30M x 0.32mm x 0.25µm



(17) 4,4'-DDT (MA)  
 6.906min 10.259 ng/ml  
 response 14261643

(17) 4,4'-DDT #2 (MA)  
 6.168min 13.027 ng/ml  
 response 55153650

Data Path : Z:\pestpcbsrv\HPCHEM1\ECD\_D\Data\PD100324\  
 Data File : PD085886.D  
 Signal(s) : Signal #1: ECD1A.ch Signal #2: ECD2B.ch  
 Acq On : 02 Oct 2024 13:44  
 Operator : AR\AJ  
 Sample : P4019-02DL2 20X  
 Misc :  
 ALS Vial : 8 Sample Multiplier: 1

**Instrument :**

ECD\_D

**ClientSampleId :**

DDC38DL2

**Manual IntegrationsAPPROVED**

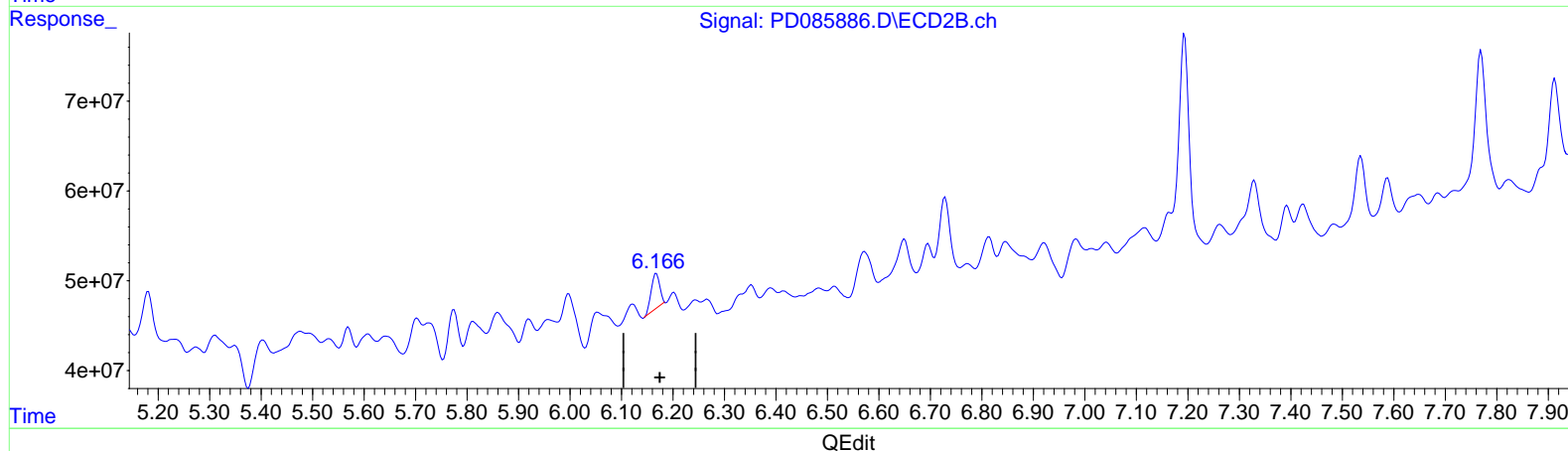
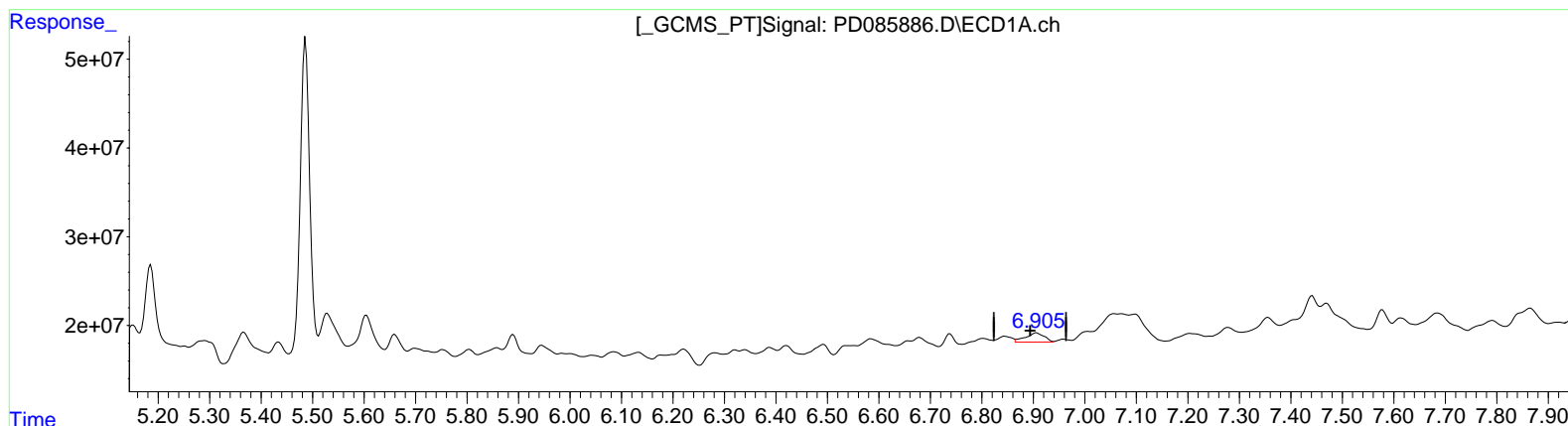
Reviewed By :Abdul  
 Mirza

10/03/2024  
 Supervised By :Ankita  
 Jodhani

10/03/2024

Integration File signal 1: autoint1.e  
 Integration File signal 2: autoint2.e  
 Quant Time: Oct 03 03:46:47 2024  
 Quant Method : Z:\pestpcbsrv\HPCHEM1\ECD\_D\Method\PD100124CLP.M  
 Quant Title : GC Extractables  
 QLast Update : Tue Oct 01 08:04:20 2024  
 Response via : Initial Calibration  
 Integrator: ChemStation

Volume Inj. : 1 µl  
 Signal #1 Phase : ZB-MR1 Signal #2 Phase: ZB-MR2  
 Signal #1 Info : 30M x 0.32mm x0.5 Signal #2 Info : 30M x 0.32mm x 0.25µm



(17) 4,4'-DDT (MA)  
 6.905min 18.880 ng/ml m  
 response 26247066

(17) 4,4'-DDT #2 (MA)  
 6.166min 10.576 ng/ml m  
 response 44774995