

Data Path : Z:\pestpcbsrv\HPCHEM1\ECD_D\Data\PD100325\
 Data File : PD090491.D
 Signal(s) : Signal #1: ECD1A.ch Signal #2: ECD2B.ch
 Acq On : 02 Oct 2025 14:00
 Operator : AR\AJ
 Sample : HEXANE
 Misc :
 ALS Vial : 1 Sample Multiplier: 1

Instrument :
 ECD_D
 ClientSampleId :
 HEXANE

Integration File signal 1: autoint1.e
 Integration File signal 2: autoint2.e
 Quant Time: Oct 03 02:43:56 2025
 Quant Method : Z:\pestpcbsrv\HPCHEM1\ECD_D\Method\PD091825.M
 Quant Title : GC Extractables
 QLast Update : Fri Sep 19 05:52:38 2025
 Response via : Initial Calibration
 Integrator: ChemStation

Volume Inj. : 1 µl
 Signal #1 Phase : ZB-MR2 Signal #2 Phase: ZB-MR2
 Signal #1 Info : 30M x 0.32mm x0.5 Signal #2 Info : 30M x 0.32mm x 0.25µm

Compound	RT#1	RT#2	Resp#1	Resp#2	ng/ml	ng/ml

System Monitoring Compounds						
1) SA Tetrachlo...	3.576f	2.861	5797408	217.2E6	1.784	7.914 #
28) SA Decachlor...	9.049	8.055	-57062	21702026	N.D.	0.670
Target Compounds						
4) MA Heptachlor	4.904f	0.000	405095	0	0.061	N.D. #
5) MB Aldrin	5.264	0.000	38502636	0	6.063	N.D. #
7) B delta-BHC	4.782f	4.275f	3052505	10849990	0.473	0.263 #
8) B Heptachlo...	5.682	4.887f	133.5E6	436.8E6	23.364	11.847 #
9) A Endosulfan I	6.058	0.000	3531824	0	0.654	N.D. #
10) B gamma-Chl...	5.913f	5.128	-2080772	151.1E6	N.D.	3.846
11) B alpha-Chl...	5.999f	5.159f	50067188	485.1E6	8.691	12.879 #
14) MA Endrin	6.578	5.786	10091681	497.1E6	2.062	13.873 #
15) B Endosulfa...	6.796	6.059	38029462	-19039696	7.796	N.D. #
16) A 4,4'-DDD	6.699	5.951f	28111523	19247476	6.860	0.594 #
17) MA 4,4'-DDT	7.021	6.152f	4837484	43898351	1.086	1.277
18) B Endrin al...	6.908	0.000	21398870	0	6.238	N.D. #
19) B Endosulfa...	7.178f	6.464	42695891	3089186	9.281	0.094 #
20) A Methoxychlor	0.000	6.717f	0	4244.2E6	N.D.	243.911 #
22) Mirex	8.121	0.000	4458793	0	1.204	N.D. #
23) Chlordane-1	4.724	0.000	143735	0	0.684	N.D. #
24) Chlordane-2	5.264f	0.000	38502636	0	179.420	N.D. #
25) Chlordane-3	5.913f	5.128	-2080772	151.1E6	N.D.	39.857
26) Chlordane-4	5.999f	5.159f	50067188	485.1E6	49.059	148.978 #
27) Chlordane-5	6.850	6.092	21910050	18910333	123.066	12.461 #

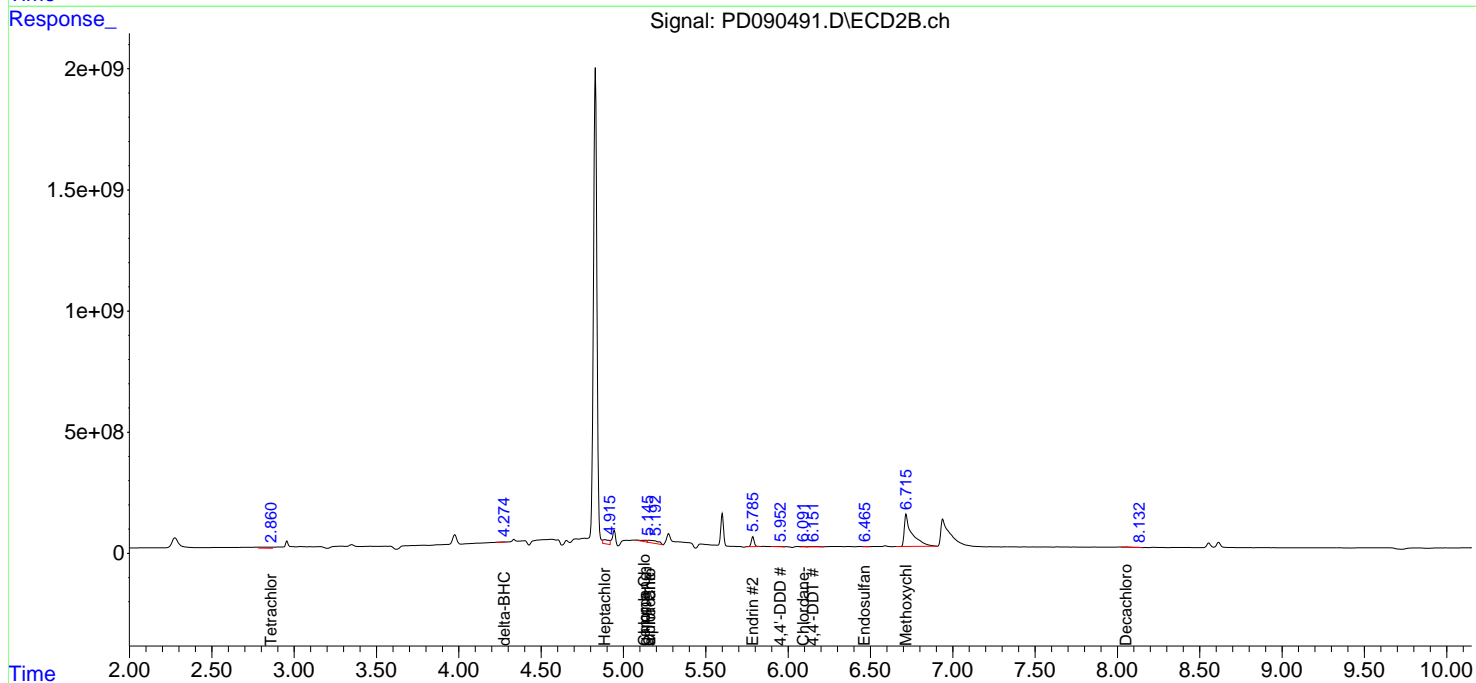
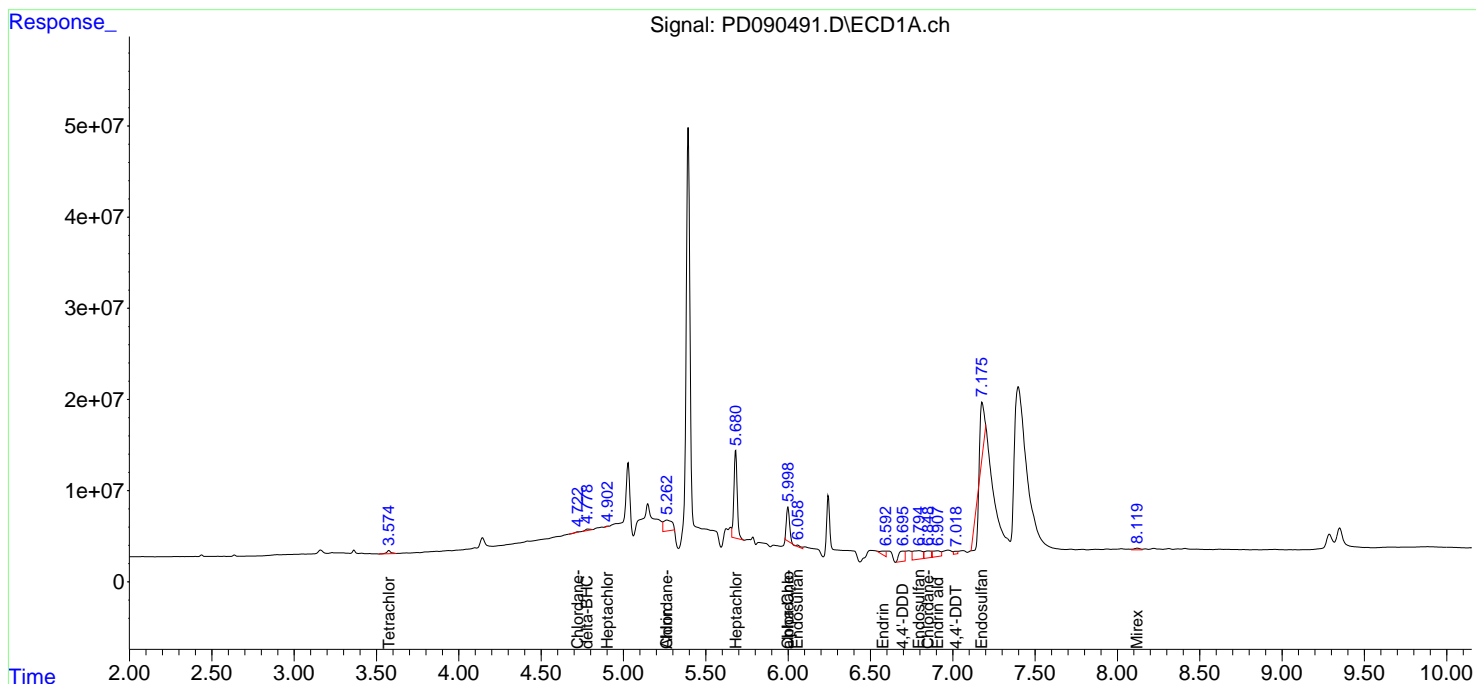
(f)=RT Delta > 1/2 Window (#)=Amounts differ by > 25% (m)=manual int.

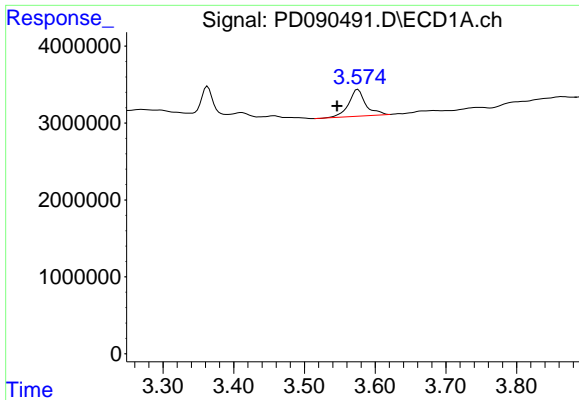
Data Path : Z:\pestpcbsrv\HPCHEM1\ECD_D\Data\PD100325\
 Data File : PD090491.D
 Signal(s) : Signal #1: ECD1A.ch Signal #2: ECD2B.ch
 Acq On : 02 Oct 2025 14:00
 Operator : AR\AJ
 Sample : HEXANE
 Misc :
 ALS Vial : 1 Sample Multiplier: 1

Instrument :
 ECD_D
 ClientSampleId :
 HEXANE

Integration File signal 1: autoint1.e
 Integration File signal 2: autoint2.e
 Quant Time: Oct 03 02:43:56 2025
 Quant Method : Z:\pestpcbsrv\HPCHEM1\ECD_D\Method\PD091825.M
 Quant Title : GC Extractables
 QLast Update : Fri Sep 19 05:52:38 2025
 Response via : Initial Calibration
 Integrator: ChemStation

Volume Inj. : 1 µl
 Signal #1 Phase : ZB-MR1 Signal #2 Phase: ZB-MR2
 Signal #1 Info : 30M x 0.32mm x0.5 Signal #2 Info : 30M x 0.32mm x 0.25µm

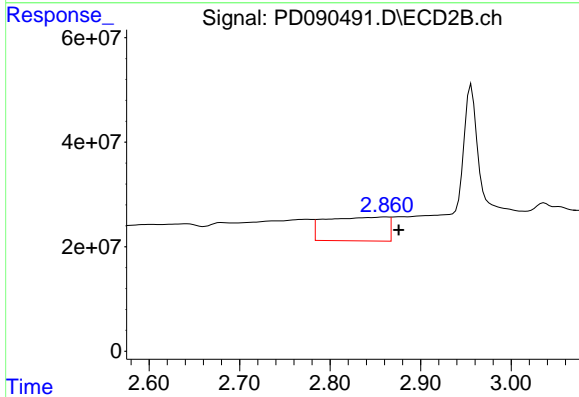




#1 Tetrachloro-m-xylene

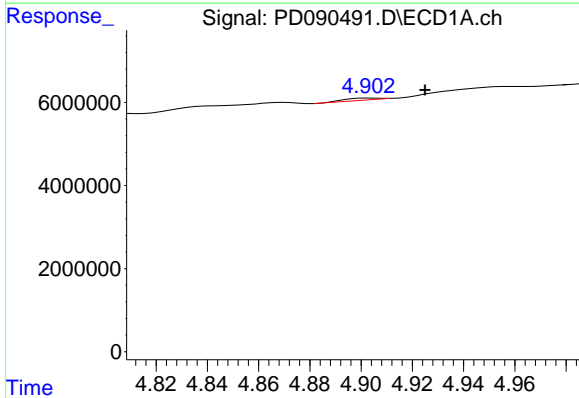
R.T.: 3.576 min
 Delta R.T.: 0.030 min
 Response: 5797408
 Conc: 1.78 ng/ml

Instrument :
 ECD_D
 ClientSampleId :
 HEXANE



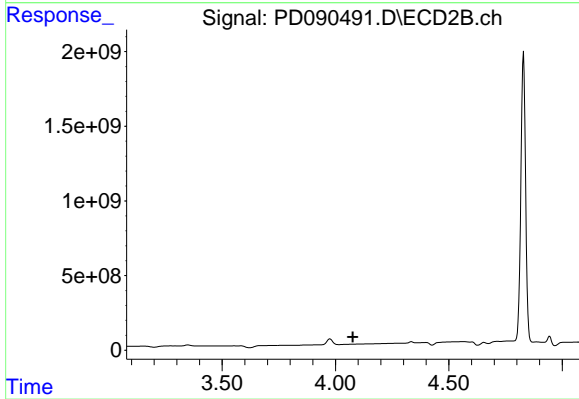
#1 Tetrachloro-m-xylene

R.T.: 2.861 min
 Delta R.T.: -0.015 min
 Response: 217227190
 Conc: 7.91 ng/ml



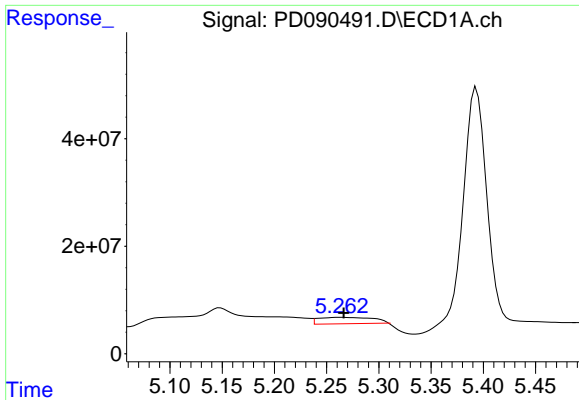
#4 Heptachlor

R.T.: 4.904 min
 Delta R.T.: -0.021 min
 Response: 405095
 Conc: 0.06 ng/ml



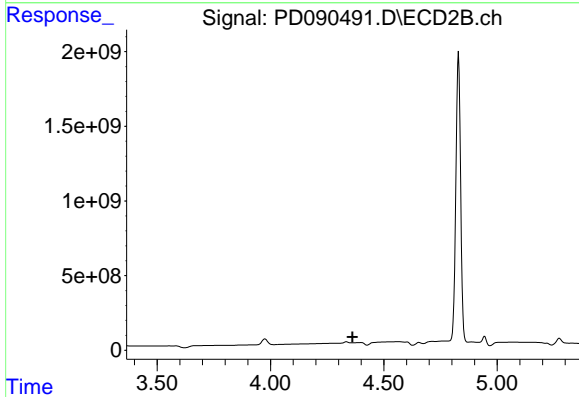
#4 Heptachlor

R.T.: 0.000 min
 Exp R.T.: 4.076 min
 Response: 0
 Conc: N.D.

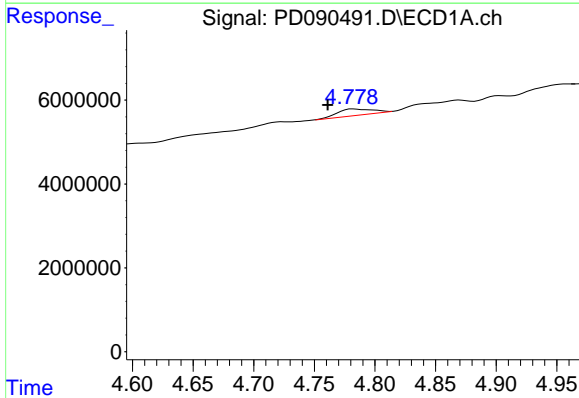


#5 Aldrin
 R.T.: 5.264 min
 Delta R.T.: -0.003 min
 Response: 38502636
 Conc: 6.06 ng/ml

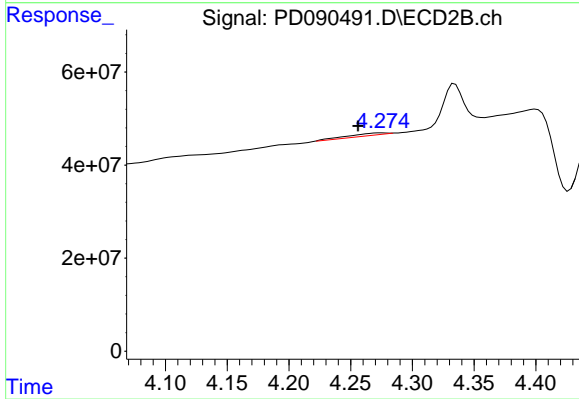
Instrument :
 ECD_D
 ClientSampleId :
 HEXANE



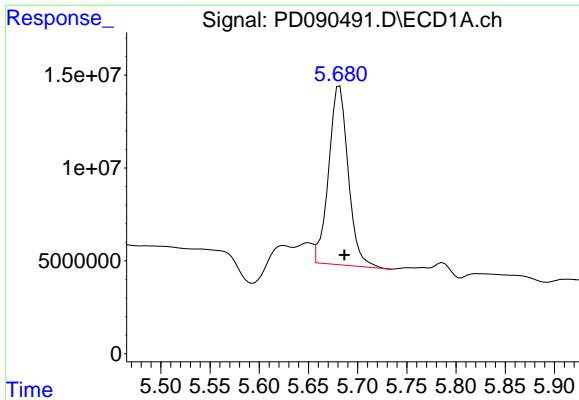
#5 Aldrin
 R.T.: 0.000 min
 Exp R.T. : 4.362 min
 Response: 0
 Conc: N.D.



#7 delta-BHC
 R.T.: 4.782 min
 Delta R.T.: 0.021 min
 Response: 3052505
 Conc: 0.47 ng/ml



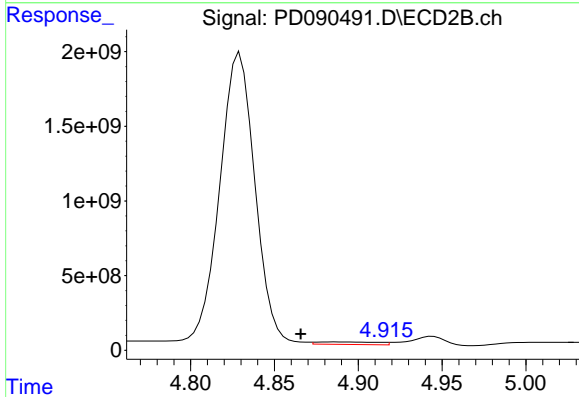
#7 delta-BHC
 R.T.: 4.275 min
 Delta R.T.: 0.019 min
 Response: 10849990
 Conc: 0.26 ng/ml



#8 Heptachlor epoxide

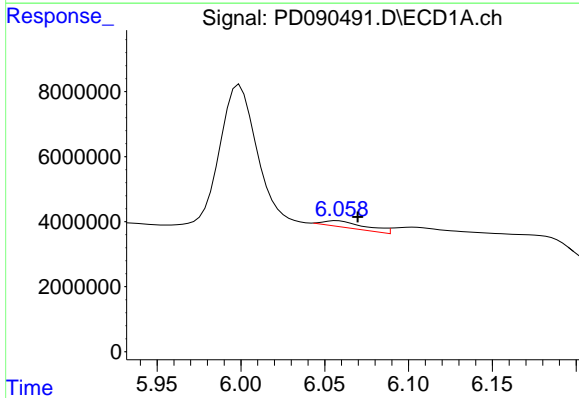
R.T.: 5.682 min
 Delta R.T.: -0.005 min
 Response: 133526061
 Conc: 23.36 ng/ml

Instrument :
 ECD_D
 ClientSampleId :
 HEXANE



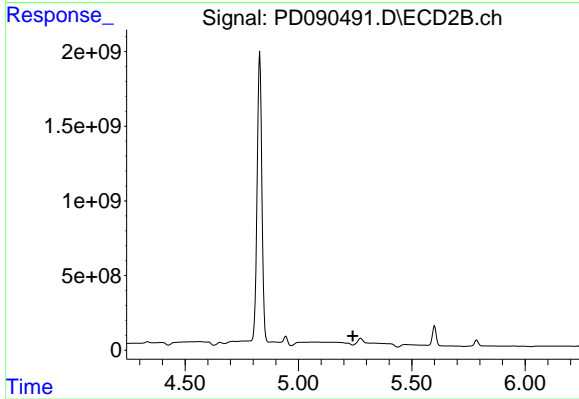
#8 Heptachlor epoxide

R.T.: 4.887 min
 Delta R.T.: 0.021 min
 Response: 436751270
 Conc: 11.85 ng/ml



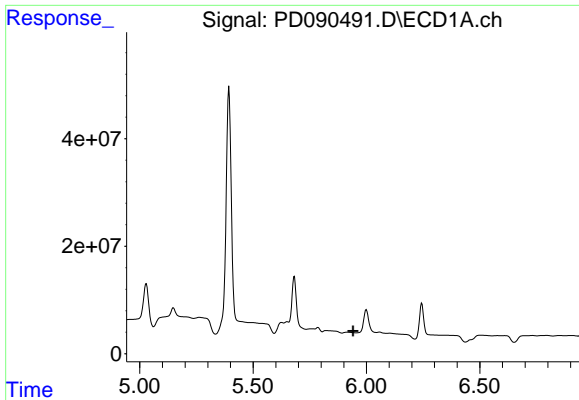
#9 Endosulfan I

R.T.: 6.058 min
 Delta R.T.: -0.012 min
 Response: 3531824
 Conc: 0.65 ng/ml



#9 Endosulfan I

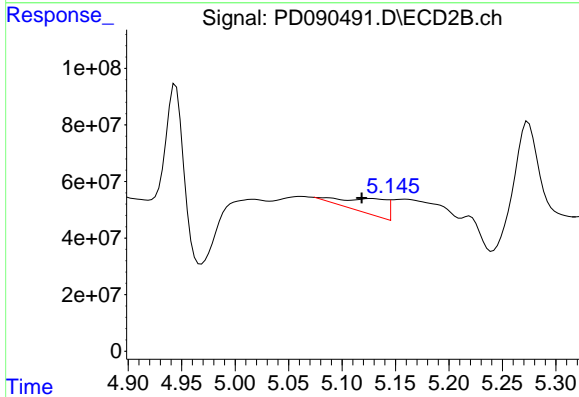
R.T.: 0.000 min
 Exp R.T.: 5.240 min
 Response: 0
 Conc: N.D.



#10 gamma-Chlordane

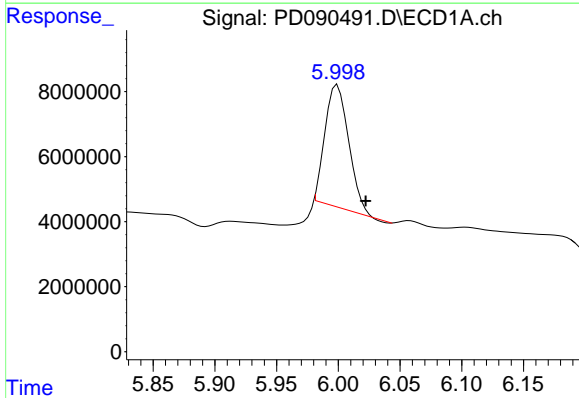
R.T.: 5.913 min
 Delta R.T.: -0.029 min
 Response: -2080772
 Conc: N.D.

Instrument :
 ECD_D
 ClientSampleId :
 HEXANE



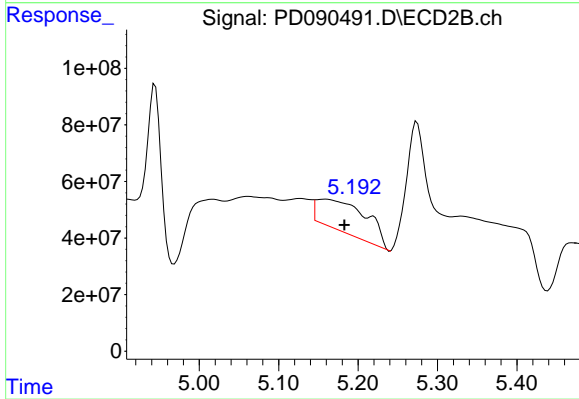
#10 gamma-Chlordane

R.T.: 5.128 min
 Delta R.T.: 0.009 min
 Response: 151081643
 Conc: 3.85 ng/ml



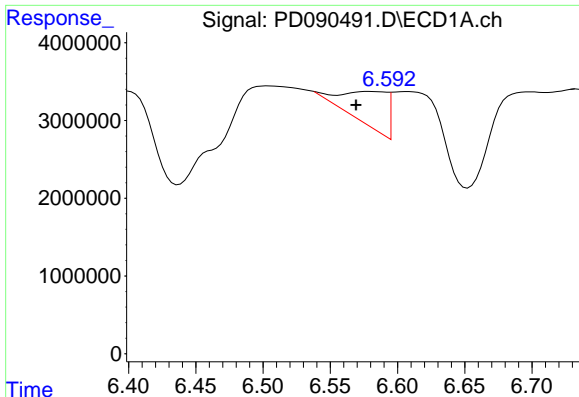
#11 alpha-Chlordane

R.T.: 5.999 min
 Delta R.T.: -0.023 min
 Response: 50067188
 Conc: 8.69 ng/ml



#11 alpha-Chlordane

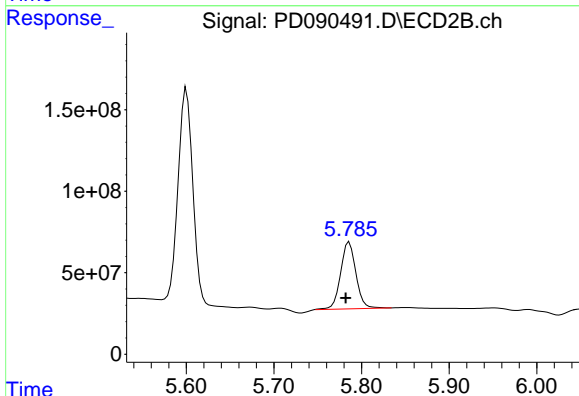
R.T.: 5.159 min
 Delta R.T.: -0.024 min
 Response: 485078316
 Conc: 12.88 ng/ml



#14 Endrin

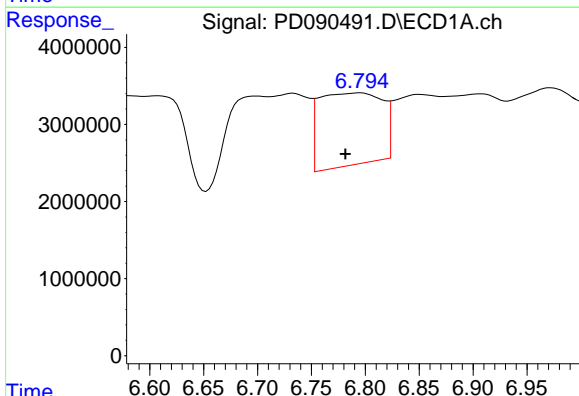
R.T.: 6.578 min
 Delta R.T.: 0.009 min
 Response: 10091681
 Conc: 2.06 ng/ml

Instrument :
 ECD_D
 ClientSampleId :
 HEXANE



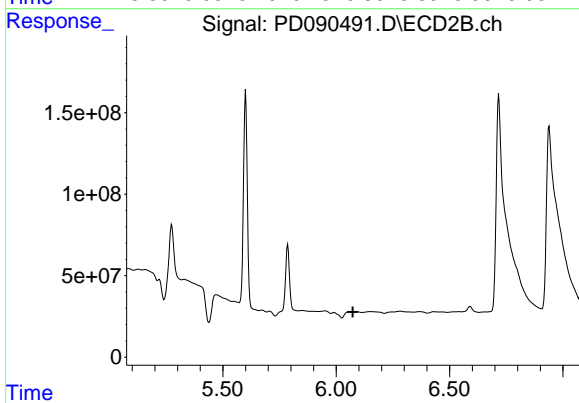
#14 Endrin

R.T.: 5.786 min
 Delta R.T.: 0.004 min
 Response: 497109586
 Conc: 13.87 ng/ml



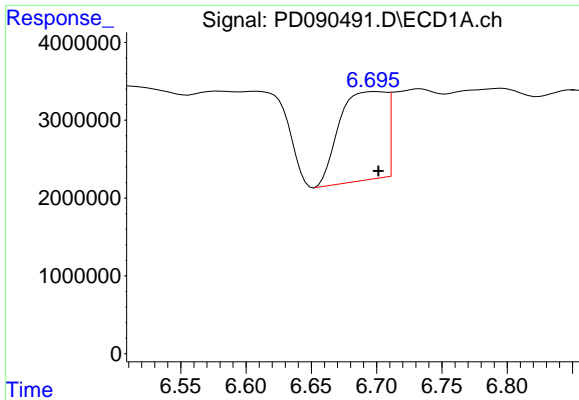
#15 Endosulfan II

R.T.: 6.796 min
 Delta R.T.: 0.014 min
 Response: 38029462
 Conc: 7.80 ng/ml



#15 Endosulfan II

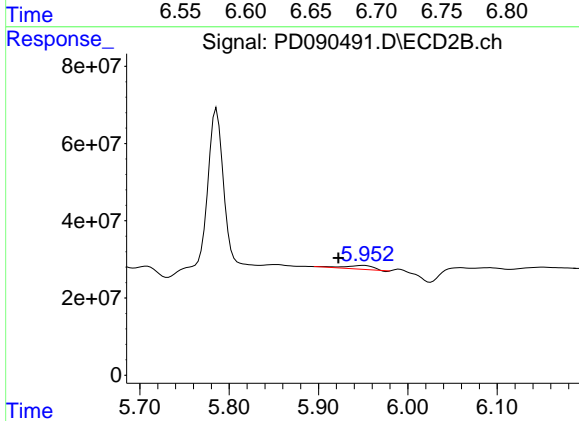
R.T.: 6.059 min
 Delta R.T.: -0.015 min
 Response: -19039696
 Conc: N.D.



#16 4,4'-DDD

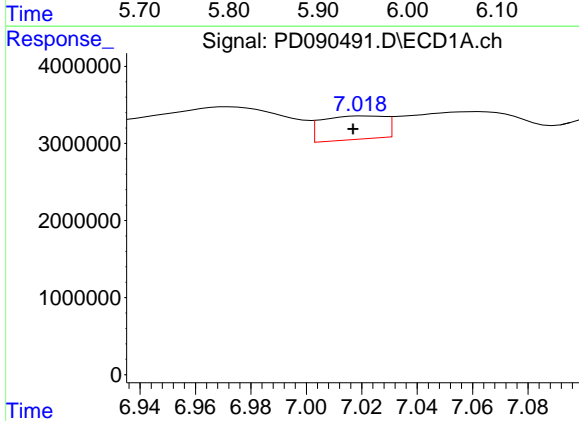
R.T.: 6.699 min
 Delta R.T.: -0.002 min
 Response: 28111523
 Conc: 6.86 ng/ml

Instrument :
 ECD_D
 ClientSampleId :
 HEXANE



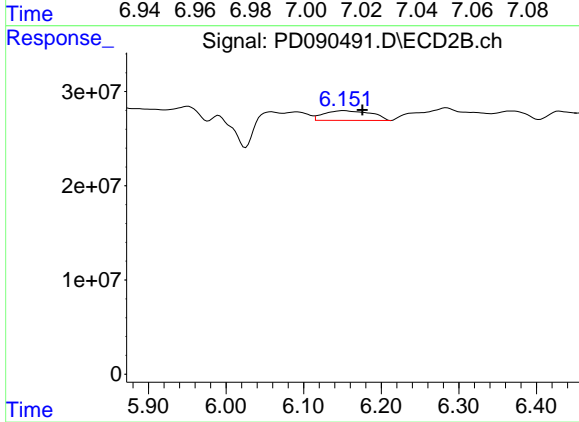
#16 4,4'-DDD

R.T.: 5.951 min
 Delta R.T.: 0.028 min
 Response: 19247476
 Conc: 0.59 ng/ml



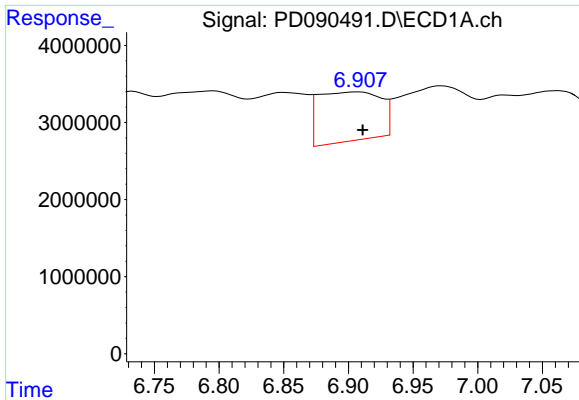
#17 4,4'-DDT

R.T.: 7.021 min
 Delta R.T.: 0.004 min
 Response: 4837484
 Conc: 1.09 ng/ml



#17 4,4'-DDT

R.T.: 6.152 min
 Delta R.T.: -0.023 min
 Response: 43898351
 Conc: 1.28 ng/ml

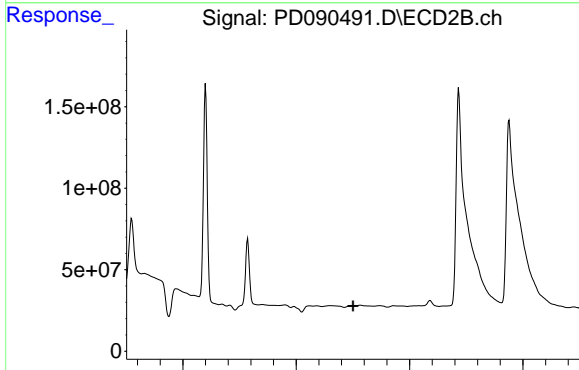


#18 Endrin aldehyde

R.T.: 6.908 min
 Delta R.T.: -0.003 min
 Response: 21398870
 Conc: 6.24 ng/ml

Instrument :
 ECD_D
 ClientSampleId :
 HEXANE

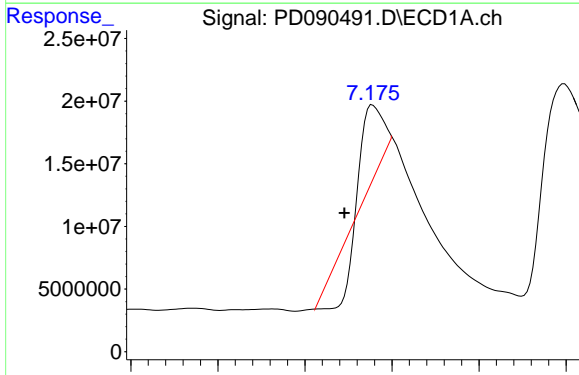
Time 6.75 6.80 6.85 6.90 6.95 7.00 7.05



#18 Endrin aldehyde

R.T.: 0.000 min
 Exp R.T. : 6.252 min
 Response: 0
 Conc: N.D.

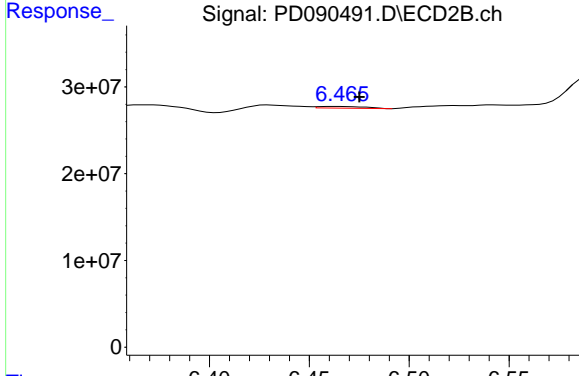
Time 5.50 6.00 6.50 7.00



#19 Endosulfan Sulfate

R.T.: 7.178 min
 Delta R.T.: 0.033 min
 Response: 42695891
 Conc: 9.28 ng/ml

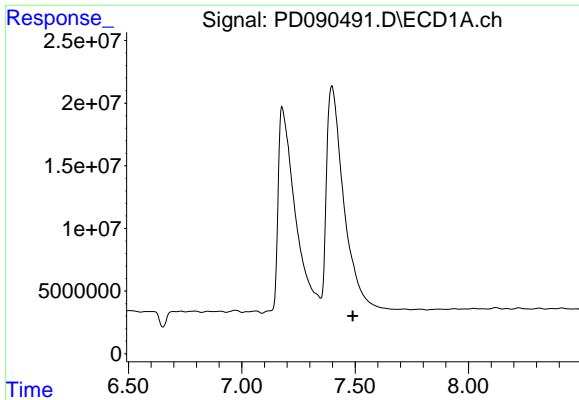
Time 6.90 7.00 7.10 7.20 7.30



#19 Endosulfan Sulfate

R.T.: 6.464 min
 Delta R.T.: -0.011 min
 Response: 3089186
 Conc: 0.09 ng/ml

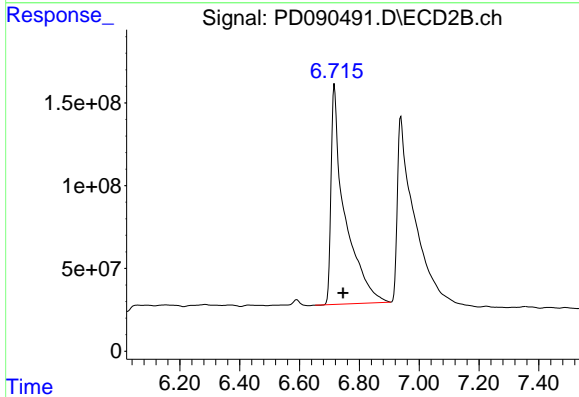
Time 6.40 6.45 6.50 6.55



#20 Methoxychlor

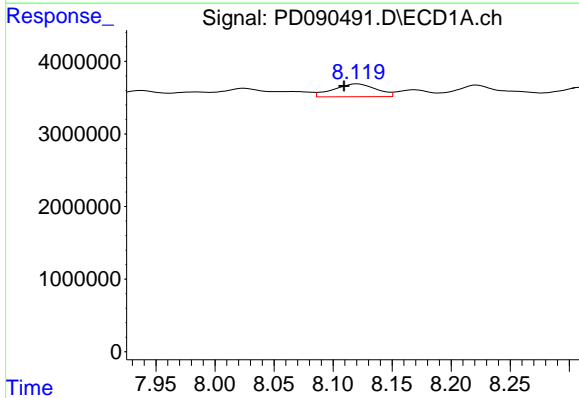
R.T.: 0.000 min
 Exp R.T.: 7.490 min
 Response: 0
 Conc: N.D.

Instrument :
 ECD_D
 ClientSampleId :
 HEXANE



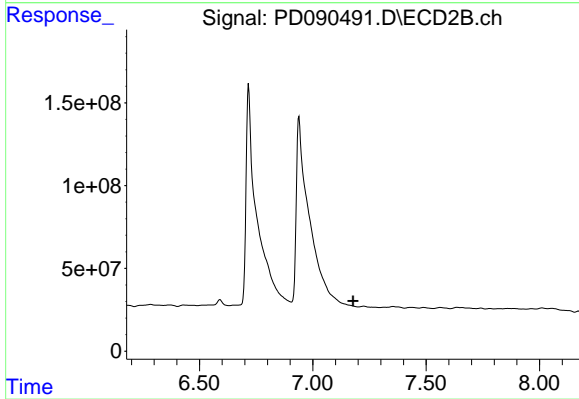
#20 Methoxychlor

R.T.: 6.717 min
 Delta R.T.: -0.029 min
 Response: 4244151168
 Conc: 243.91 ng/ml



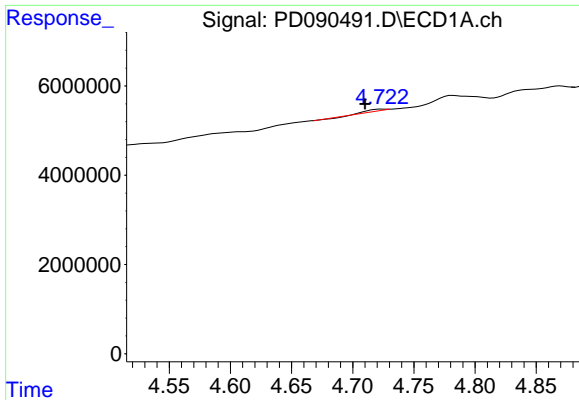
#22 Mirex

R.T.: 8.121 min
 Delta R.T.: 0.011 min
 Response: 4458793
 Conc: 1.20 ng/ml



#22 Mirex

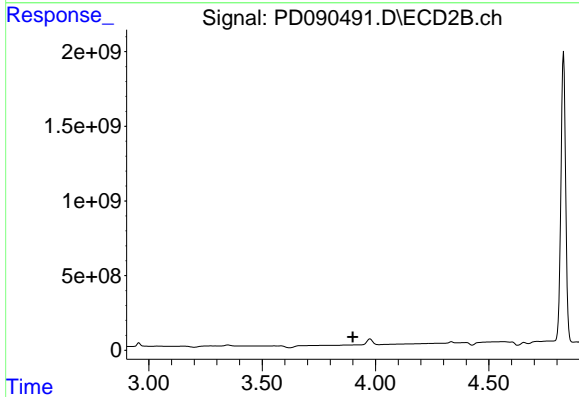
R.T.: 0.000 min
 Exp R.T.: 7.177 min
 Response: 0
 Conc: N.D.



#23 Chlordane-1

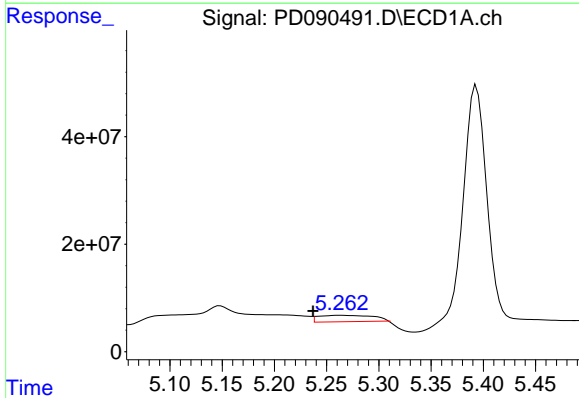
R.T.: 4.724 min
 Delta R.T.: 0.014 min
 Response: 143735
 Conc: 0.68 ng/ml

Instrument :
 ECD_D
 ClientSampleId :
 HEXANE



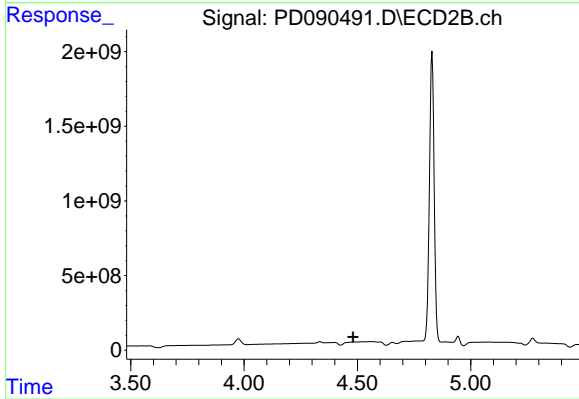
#23 Chlordane-1

R.T.: 0.000 min
 Exp R.T. : 3.900 min
 Response: 0
 Conc: N.D.



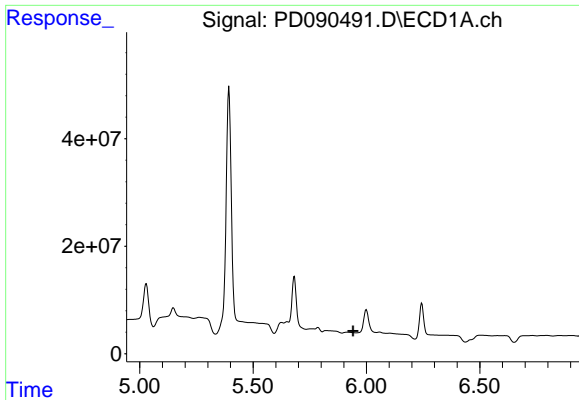
#24 Chlordane-2

R.T.: 5.264 min
 Delta R.T.: 0.027 min
 Response: 38502636
 Conc: 179.42 ng/ml



#24 Chlordane-2

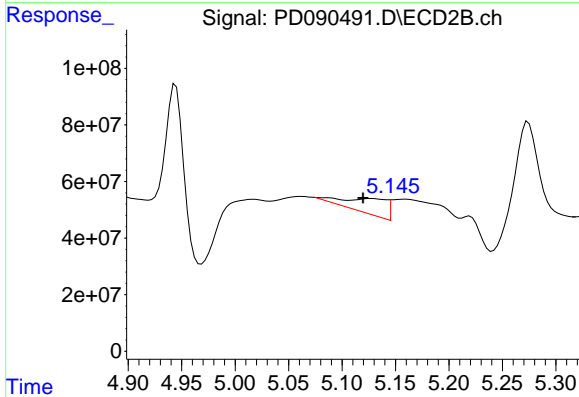
R.T.: 0.000 min
 Exp R.T. : 4.481 min
 Response: 0
 Conc: N.D.



#25 Chlordane-3

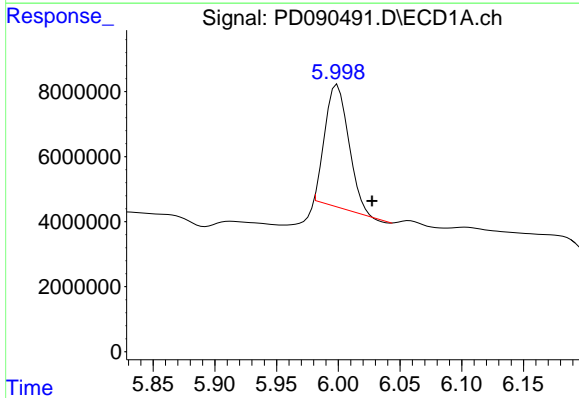
R.T.: 5.913 min
 Delta R.T.: -0.029 min
 Response: -2080772
 Conc: N.D.

Instrument :
 ECD_D
 ClientSampleId :
 HEXANE



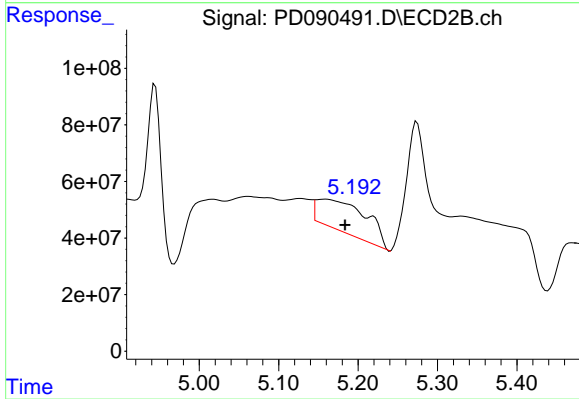
#25 Chlordane-3

R.T.: 5.128 min
 Delta R.T.: 0.008 min
 Response: 151081643
 Conc: 39.86 ng/ml



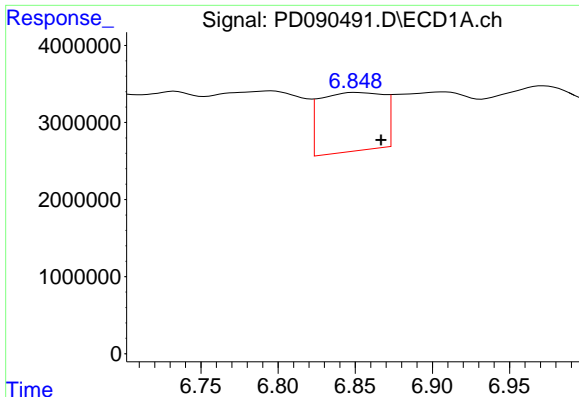
#26 Chlordane-4

R.T.: 5.999 min
 Delta R.T.: -0.028 min
 Response: 50067188
 Conc: 49.06 ng/ml



#26 Chlordane-4

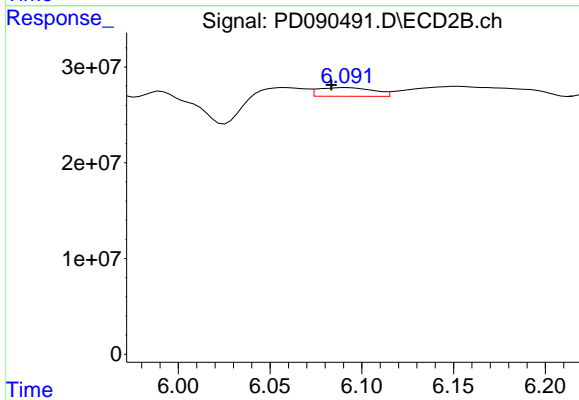
R.T.: 5.159 min
 Delta R.T.: -0.024 min
 Response: 485078316
 Conc: 148.98 ng/ml



#27 Chlordane-5

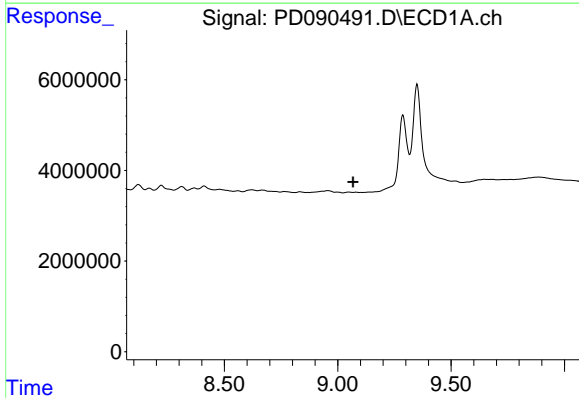
R.T.: 6.850 min
 Delta R.T.: -0.017 min
 Response: 21910050
 Conc: 123.07 ng/ml

Instrument :
 ECD_D
 ClientSampleId :
 HEXANE



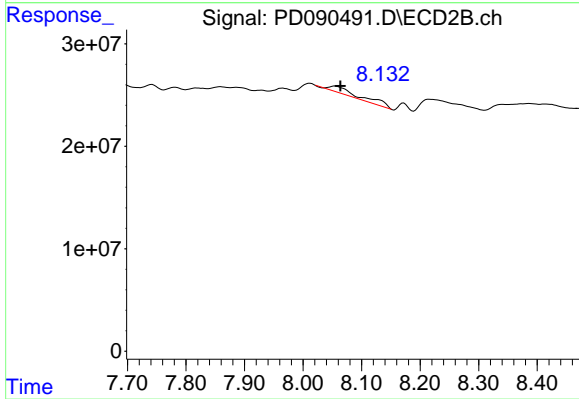
#27 Chlordane-5

R.T.: 6.092 min
 Delta R.T.: 0.008 min
 Response: 18910333
 Conc: 12.46 ng/ml



#28 Decachlorobiphenyl

R.T.: 9.049 min
 Delta R.T.: -0.019 min
 Response: -57062
 Conc: N.D.



#28 Decachlorobiphenyl

R.T.: 8.055 min
 Delta R.T.: -0.009 min
 Response: 21702026
 Conc: 0.67 ng/ml