

Data Path : Z:\pestpcbsrv\HPCHEM1\ECD_D\Data\PD100325\
 Data File : PD090492.D
 Signal(s) : Signal #1: ECD1A.ch Signal #2: ECD2B.ch
 Acq On : 02 Oct 2025 14:14
 Operator : AR\AJ
 Sample : I.BLK
 Misc :
 ALS Vial : 2 Sample Multiplier: 1

Instrument :
 ECD_D
 ClientSampleId :
 I.BLK

Integration File signal 1: autoint1.e
 Integration File signal 2: autoint2.e
 Quant Time: Oct 03 02:44:23 2025
 Quant Method : Z:\pestpcbsrv\HPCHEM1\ECD_D\Method\PD091825.M
 Quant Title : GC Extractables
 QLast Update : Fri Sep 19 05:52:38 2025
 Response via : Initial Calibration
 Integrator: ChemStation

Volume Inj. : 1 µl
 Signal #1 Phase : ZB-MR2 Signal #2 Phase: ZB-MR2
 Signal #1 Info : 30M x 0.32mm x0.5 Signal #2 Info : 30M x 0.32mm x 0.25µm

Compound	RT#1	RT#2	Resp#1	Resp#2	ng/ml	ng/ml
System Monitoring Compounds						
1) SA Tetrachlo...	3.545	2.874	66046723	533.5E6	20.319	19.436
28) SA Decachlor...	9.062	8.059	114.4E6	690.9E6	23.707	21.316
Target Compounds						
2) A alpha-BHC	0.000	3.376	0	1612822	N.D.	0.037 #
3) MA gamma-BHC...	0.000	3.725	0	1388433	N.D.	0.034 #
4) MA Heptachlor	4.920	4.077	927434	509344	0.140	0.013 #
5) MB Aldrin	5.258	4.372	206529	1442059	0.033	0.036
7) B delta-BHC	4.775	4.253	4894774	1803622	0.758	0.044 #
8) B Heptachlo...	5.676	4.886f	5738557	51578910	1.004	1.399 #
10) B gamma-Chl...	5.922f	5.115	254678	5814487	0.045	0.148 #
12) B 4,4'-DDE	0.000	5.370	0	696715	N.D.	0.018 #
13) MA Dieldrin	0.000	5.503	0	1804071	N.D.	0.046 #
14) MA Endrin	0.000	5.785	0	49921027	N.D.	1.393 #
15) B Endosulfa...	6.772	6.048f	4834069	4882912	0.991	0.145 #
16) A 4,4'-DDD	6.695	5.927	5842964	516207	1.426	0.016 #
17) MA 4,4'-DDT	7.007	6.170	563630	1301710	0.127	0.038 #
18) B Endrin al...	6.911	6.250	4794858	1932430	1.398	0.082 #
19) B Endosulfa...	7.141	6.471	200474	1320269	0.044	0.040
20) A Methoxychlor	0.000	6.718f	0	7565019	N.D.	0.435 #
21) B Endrin ke...	7.617	0.000	8422944	0	1.703	N.D. #
22) Mirex	8.106	7.173	13504566	18961704	3.645	0.687 #
23) Chlordane-1	0.000	3.889	0	418961	N.D.	0.348 #
24) Chlordane-2	5.258f	4.491	206529	10018047	0.962	8.011 #
25) Chlordane-3	5.922	5.115	254678	5814487	0.304	1.534 #
26) Chlordane-4	0.000	5.192	0	10749046	N.D.	3.301 #
27) Chlordane-5	0.000	6.048f	0	4882912	N.D.	3.218 #

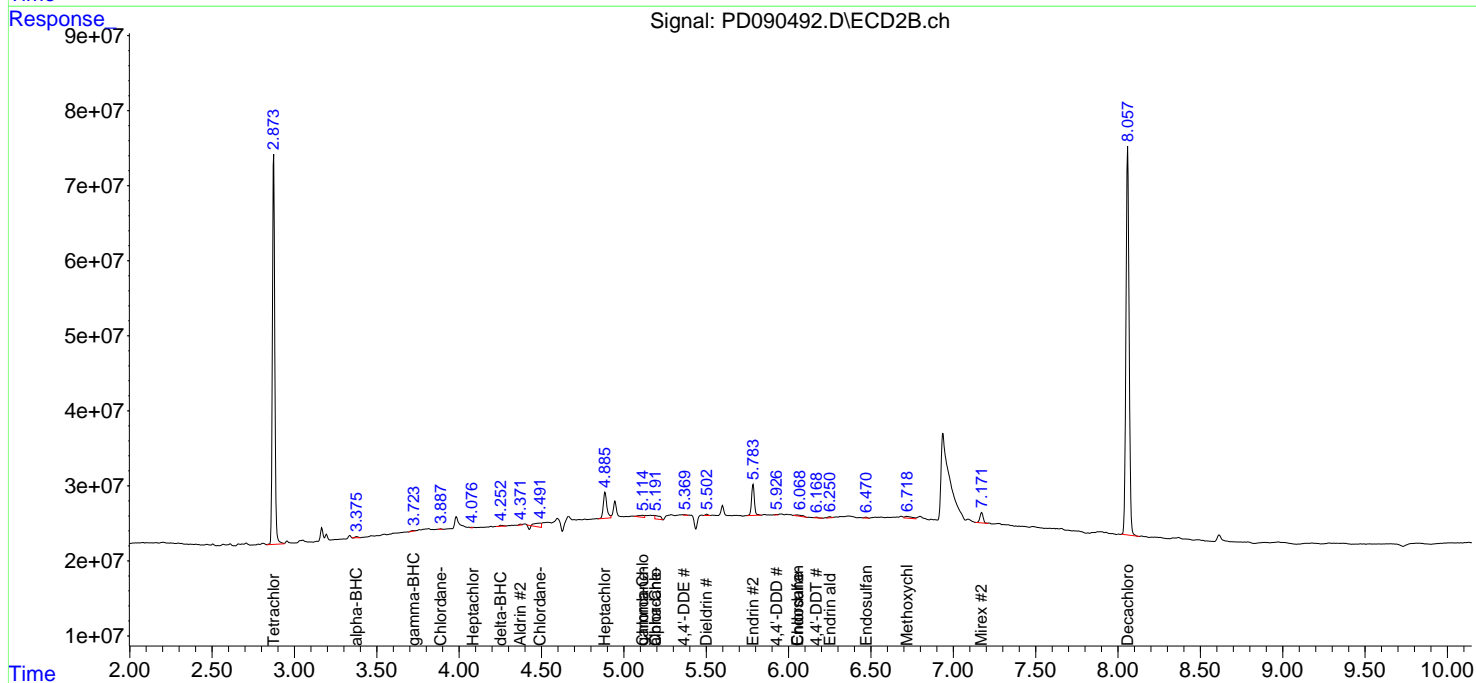
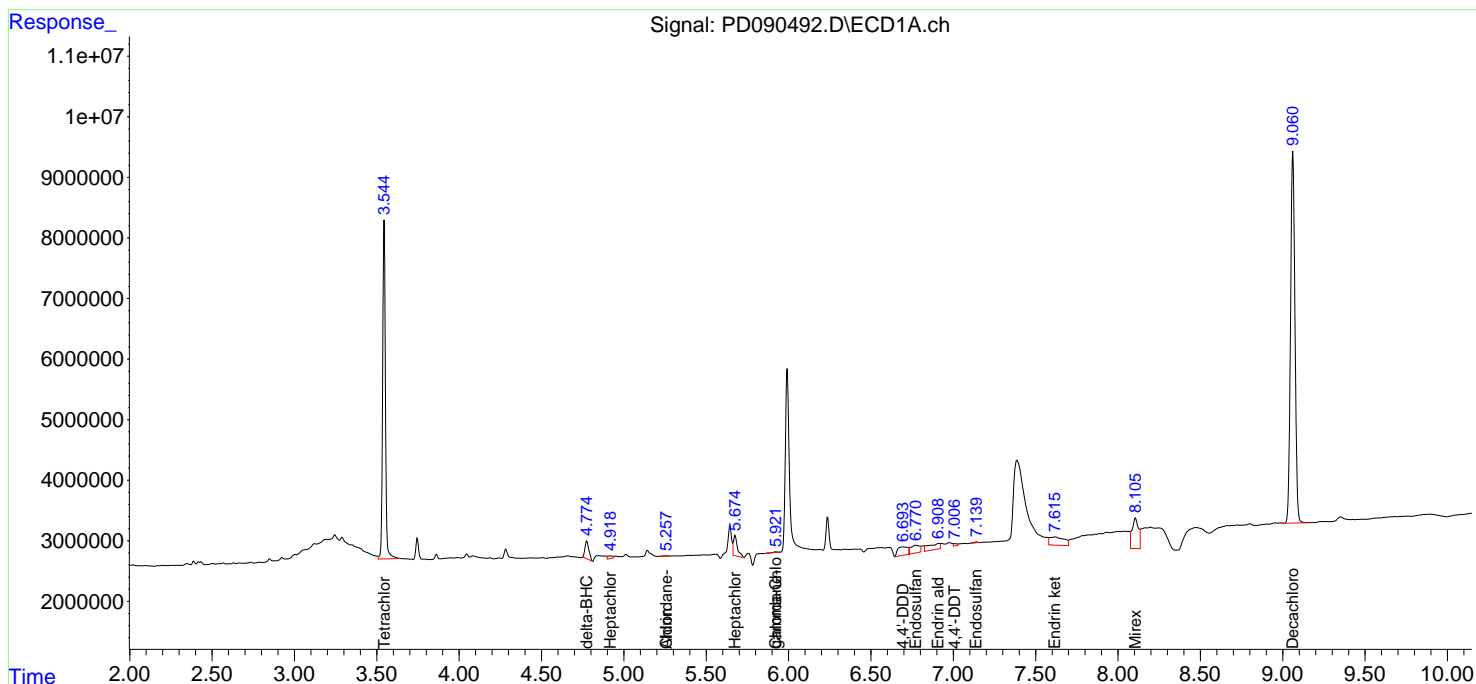
(f)=RT Delta > 1/2 Window (#)=Amounts differ by > 25% (m)=manual int.

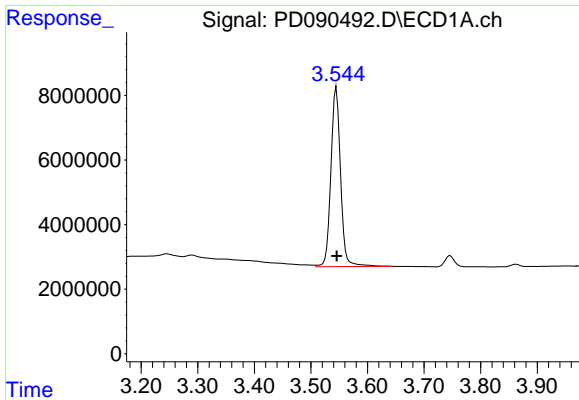
Data Path : Z:\pestpcbsrv\HPCHEM1\ECD_D\Data\PD100325\
 Data File : PD090492.D
 Signal(s) : Signal #1: ECD1A.ch Signal #2: ECD2B.ch
 Acq On : 02 Oct 2025 14:14
 Operator : AR\AJ
 Sample : I.BLK
 Misc :
 ALS Vial : 2 Sample Multiplier: 1

Instrument :
 ECD_D
 ClientSampleId :
 I.BLK

Integration File signal 1: autoint1.e
 Integration File signal 2: autoint2.e
 Quant Time: Oct 03 02:44:23 2025
 Quant Method : Z:\pestpcbsrv\HPCHEM1\ECD_D\Method\PD091825.M
 Quant Title : GC Extractables
 QLast Update : Fri Sep 19 05:52:38 2025
 Response via : Initial Calibration
 Integrator: ChemStation

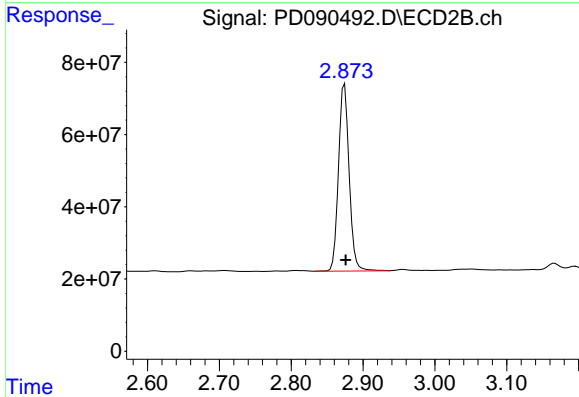
Volume Inj. : 1 µl
 Signal #1 Phase : ZB-MR1 Signal #2 Phase: ZB-MR2
 Signal #1 Info : 30M x 0.32mm x0.5 Signal #2 Info : 30M x 0.32mm x 0.25µm



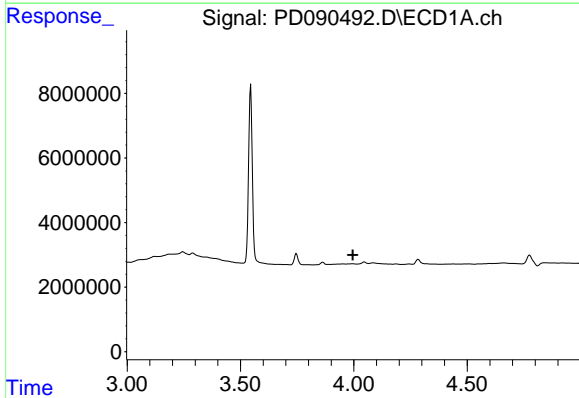


#1 Tetrachloro-m-xylene
 R.T.: 3.545 min
 Delta R.T.: -0.001 min
 Response: 66046723
 Conc: 20.32 ng/ml

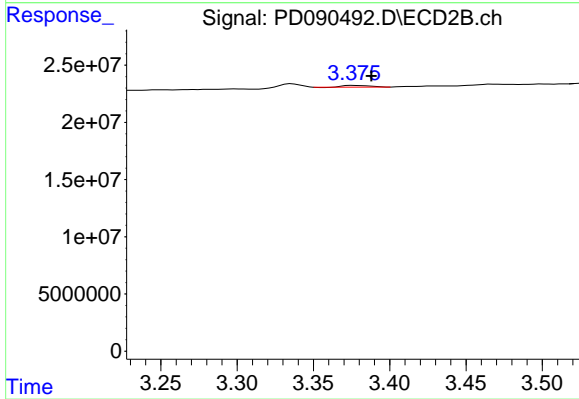
Instrument :
 ECD_D
 ClientSampleId :
 I.BLK



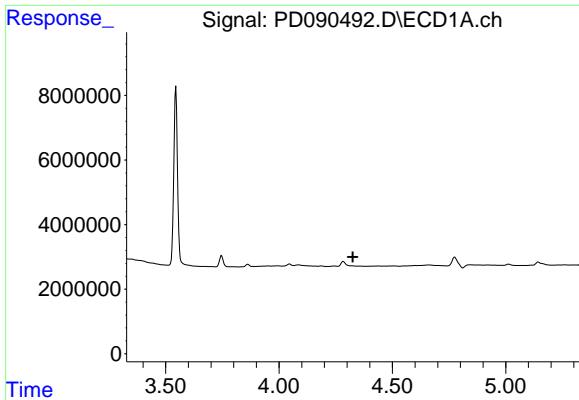
#1 Tetrachloro-m-xylene
 R.T.: 2.874 min
 Delta R.T.: -0.002 min
 Response: 533505772
 Conc: 19.44 ng/ml



#2 alpha-BHC
 R.T.: 0.000 min
 Exp R.T. : 3.995 min
 Response: 0
 Conc: N.D.



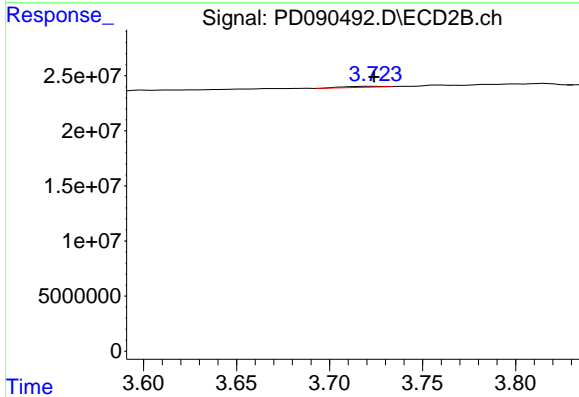
#2 alpha-BHC
 R.T.: 3.376 min
 Delta R.T.: -0.012 min
 Response: 1612822
 Conc: 0.04 ng/ml



#3 gamma-BHC (Lindane)

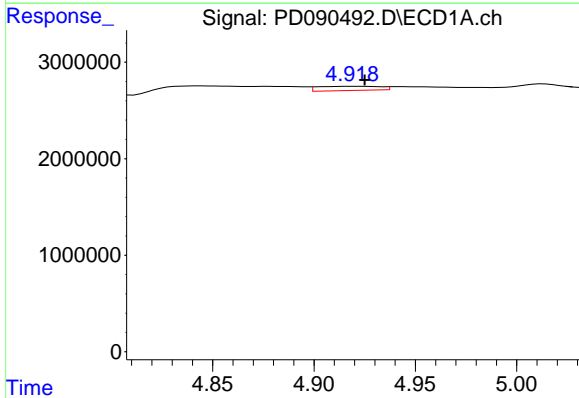
R.T.: 0.000 min
 Exp R.T.: 4.326 min
 Response: 0
 Conc: N.D.

Instrument :
 ECD_D
 ClientSampleId :
 I.BLK



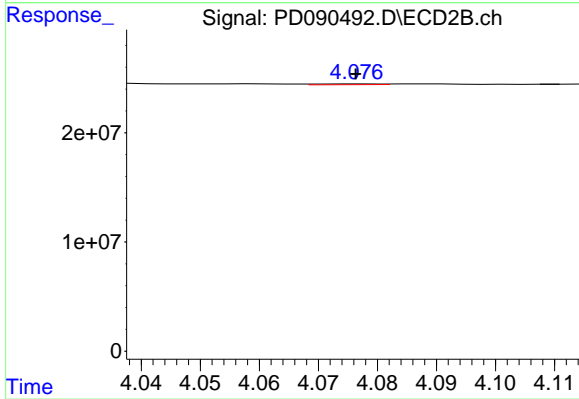
#3 gamma-BHC (Lindane)

R.T.: 3.725 min
 Delta R.T.: 0.000 min
 Response: 1388433
 Conc: 0.03 ng/ml



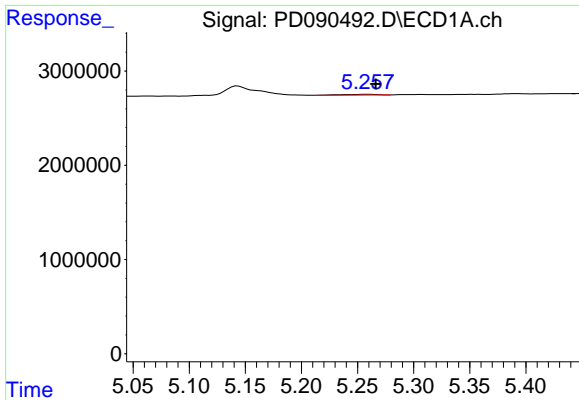
#4 Heptachlor

R.T.: 4.920 min
 Delta R.T.: -0.005 min
 Response: 927434
 Conc: 0.14 ng/ml



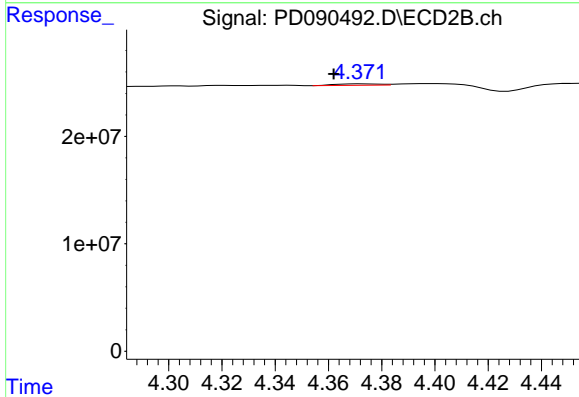
#4 Heptachlor

R.T.: 4.077 min
 Delta R.T.: 0.000 min
 Response: 509344
 Conc: 0.01 ng/ml

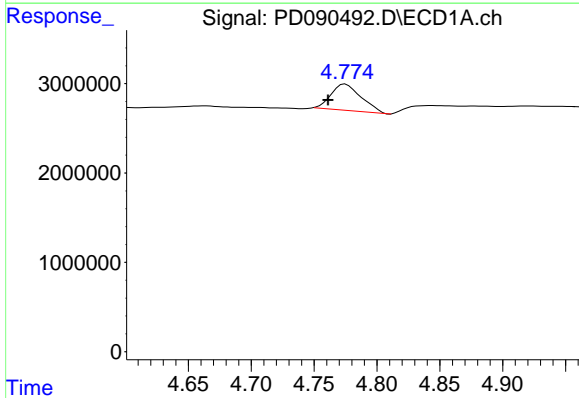


#5 Aldrin
 R.T.: 5.258 min
 Delta R.T.: -0.008 min
 Response: 206529
 Conc: 0.03 ng/ml

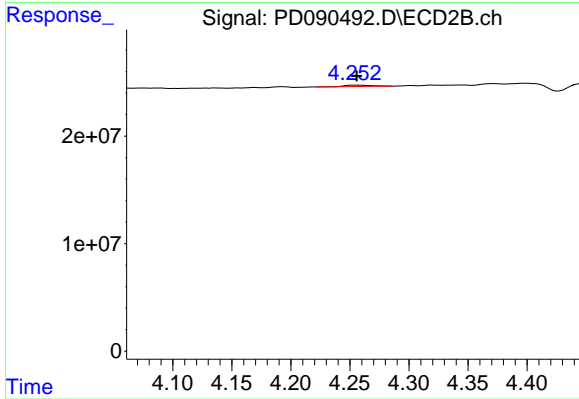
Instrument :
 ECD_D
 ClientSampleId :
 I.BLK



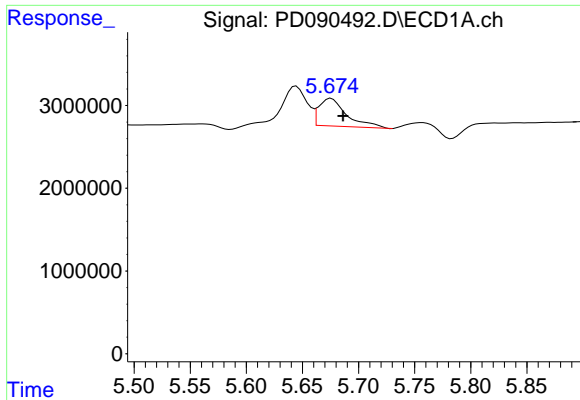
#5 Aldrin
 R.T.: 4.372 min
 Delta R.T.: 0.010 min
 Response: 1442059
 Conc: 0.04 ng/ml



#7 delta-BHC
 R.T.: 4.775 min
 Delta R.T.: 0.014 min
 Response: 4894774
 Conc: 0.76 ng/ml



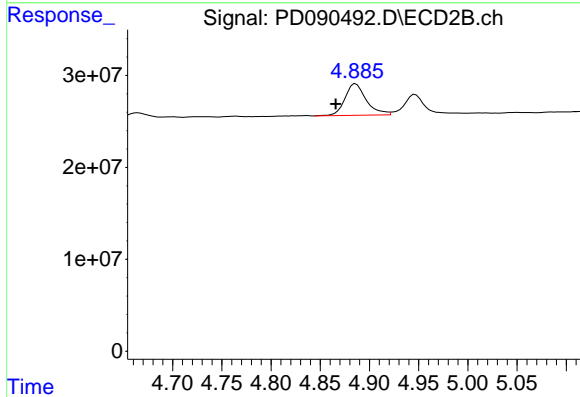
#7 delta-BHC
 R.T.: 4.253 min
 Delta R.T.: -0.003 min
 Response: 1803622
 Conc: 0.04 ng/ml



#8 Heptachlor epoxide

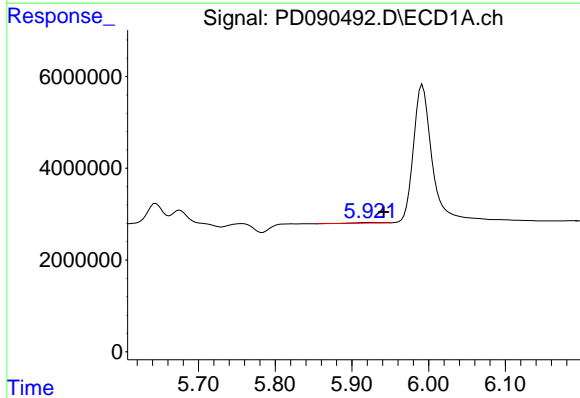
R.T.: 5.676 min
 Delta R.T.: -0.011 min
 Response: 5738557
 Conc: 1.00 ng/ml

Instrument :
 ECD_D
 ClientSampleId :
 I.BLK



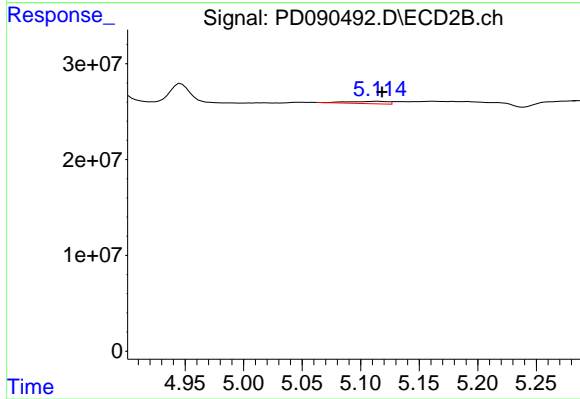
#8 Heptachlor epoxide

R.T.: 4.886 min
 Delta R.T.: 0.020 min
 Response: 51578910
 Conc: 1.40 ng/ml



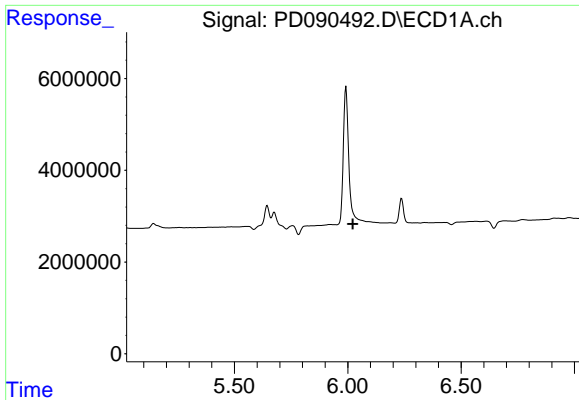
#10 gamma-Chlordane

R.T.: 5.922 min
 Delta R.T.: -0.019 min
 Response: 254678
 Conc: 0.04 ng/ml



#10 gamma-Chlordane

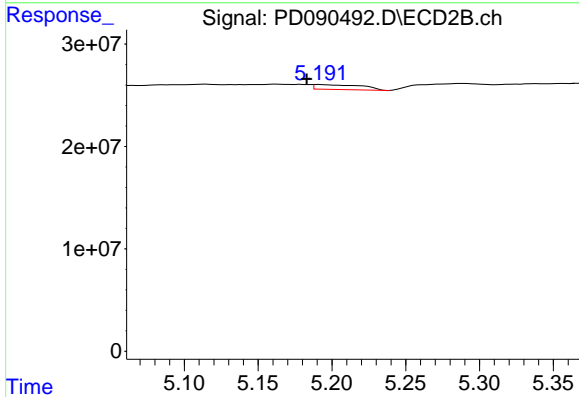
R.T.: 5.115 min
 Delta R.T.: -0.004 min
 Response: 5814487
 Conc: 0.15 ng/ml



#11 alpha-Chlordane

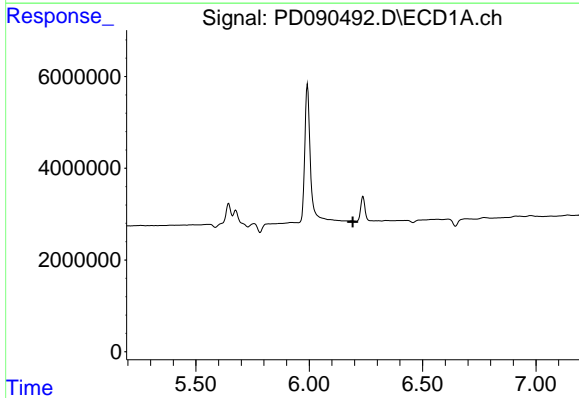
R.T.: 5.992 min
 Delta R.T.: -0.030 min
 Response: -28718663
 Conc: N.D.

Instrument :
 ECD_D
 ClientSampleId :
 I.BLK



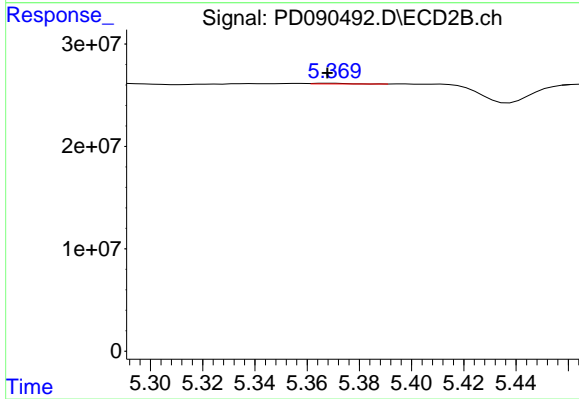
#11 alpha-Chlordane

R.T.: 5.192 min
 Delta R.T.: 0.009 min
 Response: 10749046
 Conc: 0.29 ng/ml



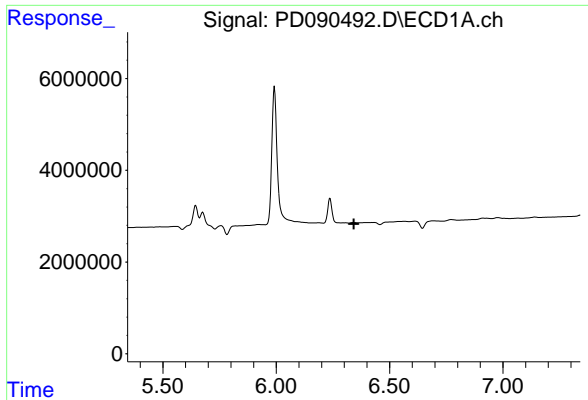
#12 4,4'-DDE

R.T.: 0.000 min
 Exp R.T. : 6.192 min
 Response: 0
 Conc: N.D.



#12 4,4'-DDE

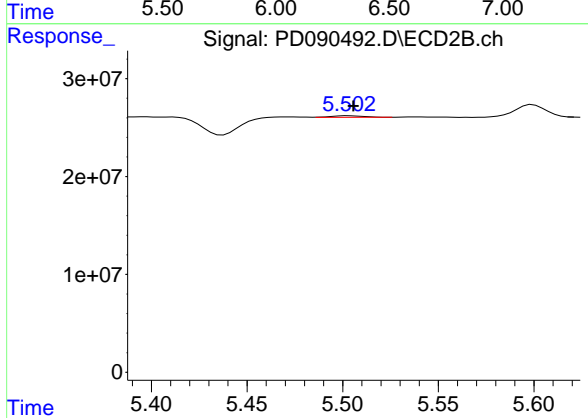
R.T.: 5.370 min
 Delta R.T.: 0.002 min
 Response: 696715
 Conc: 0.02 ng/ml



#13 Dieldrin

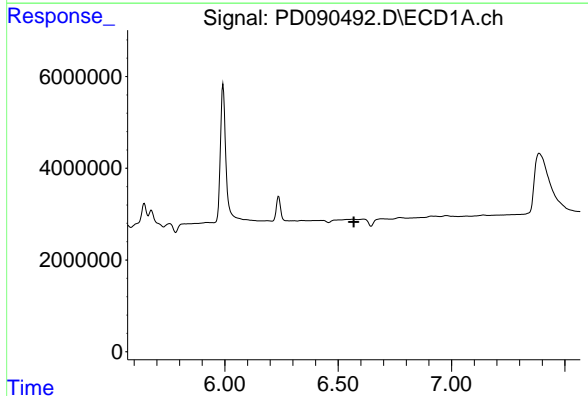
R.T.: 0.000 min
 Exp R.T. : 6.343 min
 Response: 0
 Conc: N.D.

Instrument :
 ECD_D
 ClientSampleId :
 I.BLK



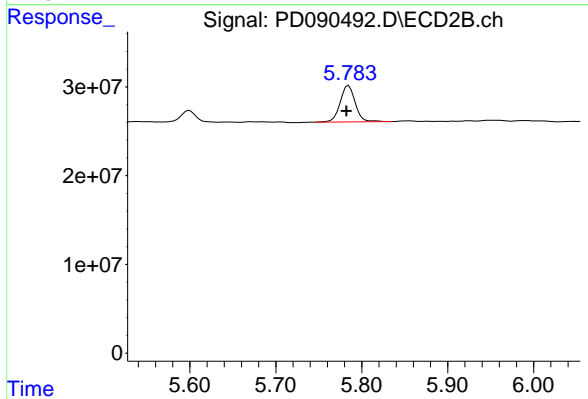
#13 Dieldrin

R.T.: 5.503 min
 Delta R.T.: -0.002 min
 Response: 1804071
 Conc: 0.05 ng/ml



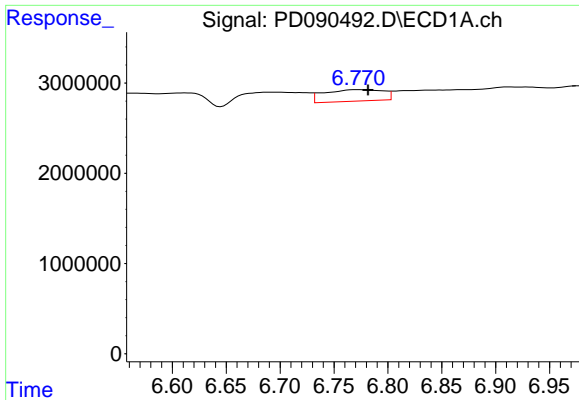
#14 Endrin

R.T.: 0.000 min
 Exp R.T. : 6.569 min
 Response: 0
 Conc: N.D.



#14 Endrin

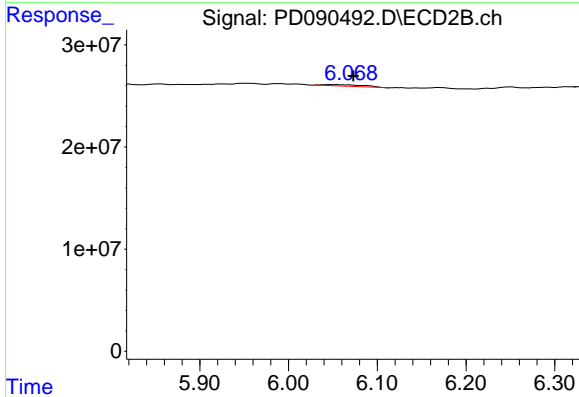
R.T.: 5.785 min
 Delta R.T.: 0.003 min
 Response: 49921027
 Conc: 1.39 ng/ml



#15 Endosulfan II

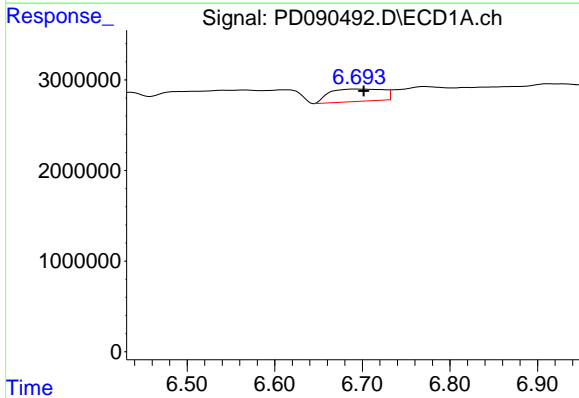
R.T.: 6.772 min
 Delta R.T.: -0.010 min
 Response: 4834069
 Conc: 0.99 ng/ml

Instrument :
 ECD_D
 ClientSampleId :
 I.BLK



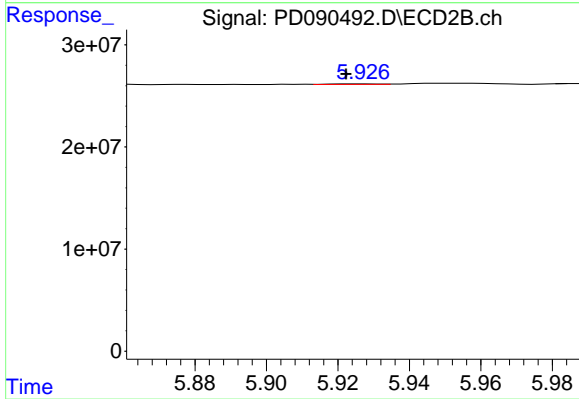
#15 Endosulfan II

R.T.: 6.048 min
 Delta R.T.: -0.026 min
 Response: 4882912
 Conc: 0.14 ng/ml



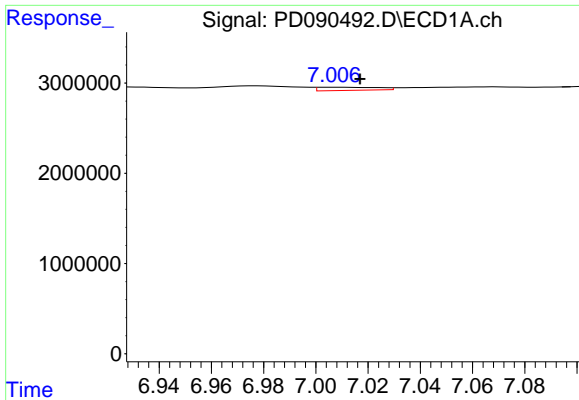
#16 4,4'-DDD

R.T.: 6.695 min
 Delta R.T.: -0.007 min
 Response: 5842964
 Conc: 1.43 ng/ml



#16 4,4'-DDD

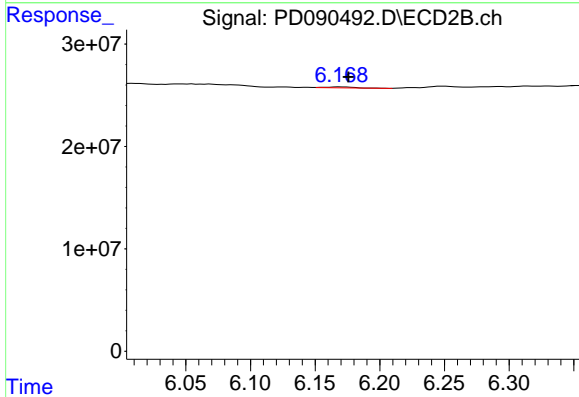
R.T.: 5.927 min
 Delta R.T.: 0.004 min
 Response: 516207
 Conc: 0.02 ng/ml



#17 4,4'-DDT

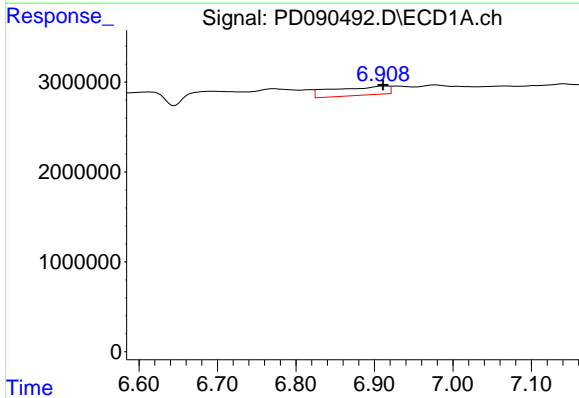
R.T.: 7.007 min
 Delta R.T.: -0.010 min
 Response: 563630
 Conc: 0.13 ng/ml

Instrument :
 ECD_D
 ClientSampleId :
 I.BLK



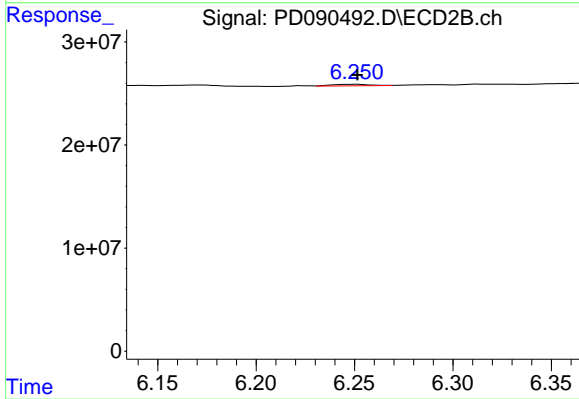
#17 4,4'-DDT

R.T.: 6.170 min
 Delta R.T.: -0.006 min
 Response: 1301710
 Conc: 0.04 ng/ml



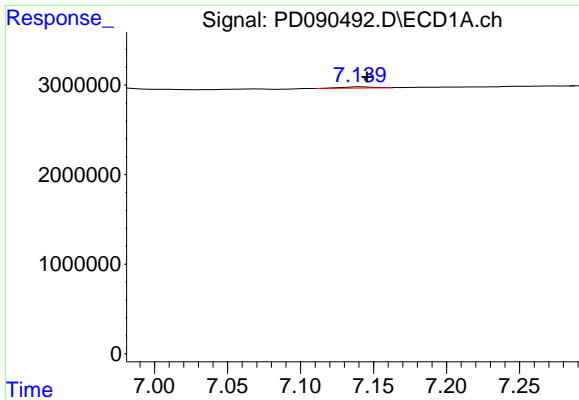
#18 Endrin aldehyde

R.T.: 6.911 min
 Delta R.T.: 0.000 min
 Response: 4794858
 Conc: 1.40 ng/ml



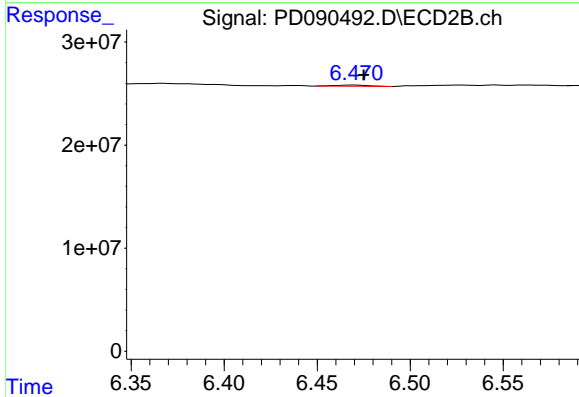
#18 Endrin aldehyde

R.T.: 6.250 min
 Delta R.T.: -0.001 min
 Response: 1932430
 Conc: 0.08 ng/ml

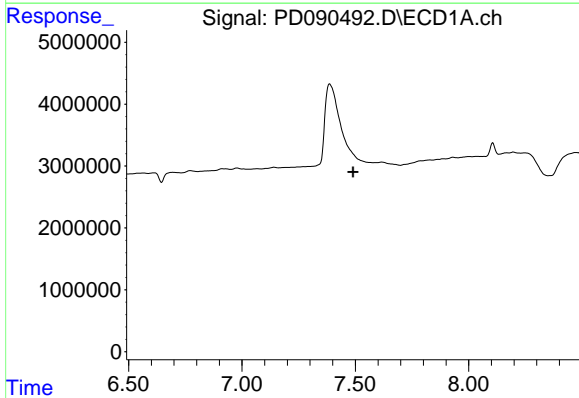


#19 Endosulfan Sulfate
 R.T.: 7.141 min
 Delta R.T.: -0.005 min
 Response: 200474
 Conc: 0.04 ng/ml

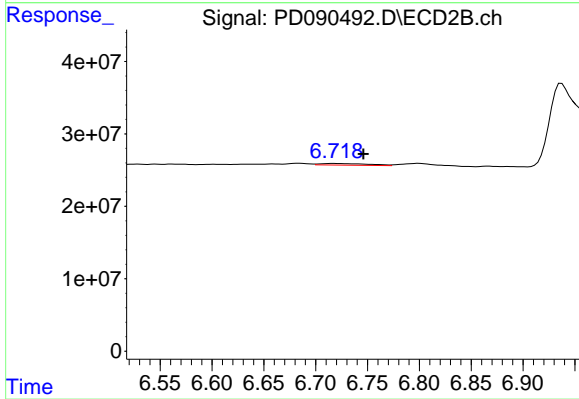
Instrument :
 ECD_D
 ClientSampleId :
 I.BLK



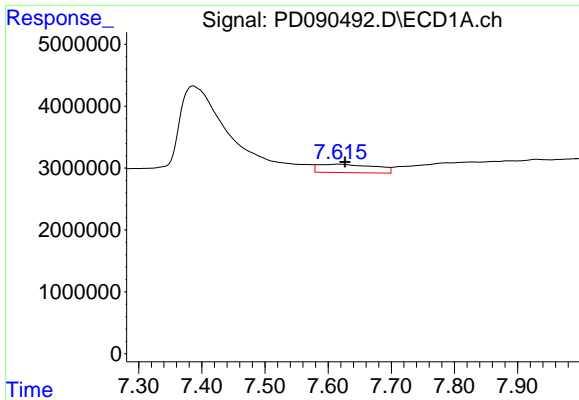
#19 Endosulfan Sulfate
 R.T.: 6.471 min
 Delta R.T.: -0.004 min
 Response: 1320269
 Conc: 0.04 ng/ml



#20 Methoxychlor
 R.T.: 0.000 min
 Exp R.T. : 7.490 min
 Response: 0
 Conc: N.D.

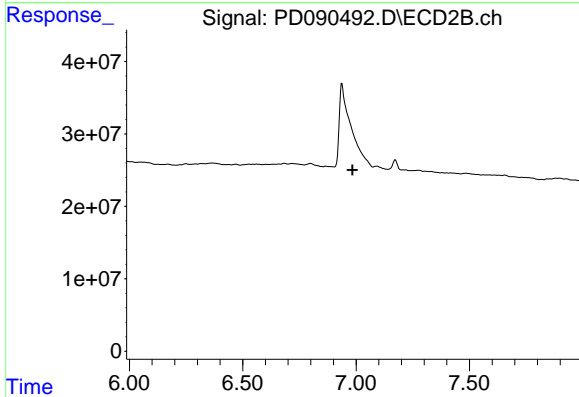


#20 Methoxychlor
 R.T.: 6.718 min
 Delta R.T.: -0.028 min
 Response: 7565019
 Conc: 0.43 ng/ml

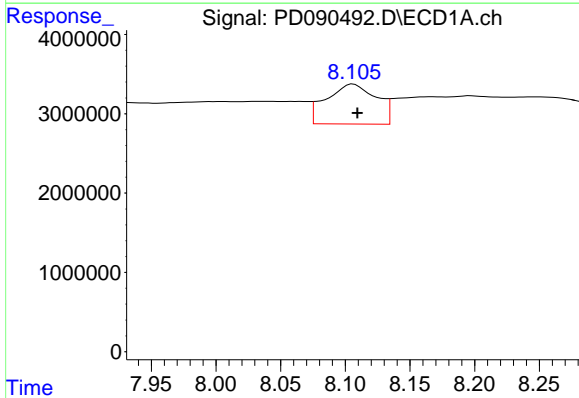


#21 Endrin ketone
 R.T.: 7.617 min
 Delta R.T.: -0.010 min
 Response: 8422944
 Conc: 1.70 ng/ml

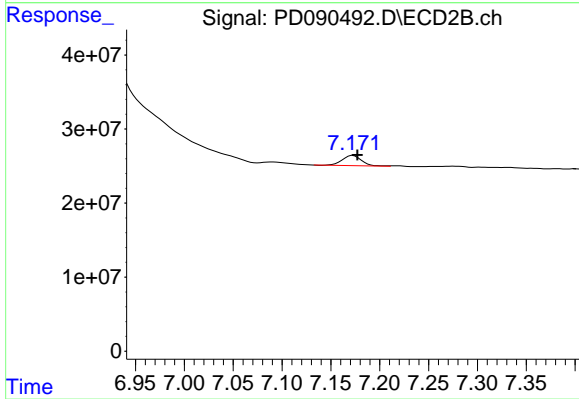
Instrument :
 ECD_D
 ClientSampleId :
 I.BLK



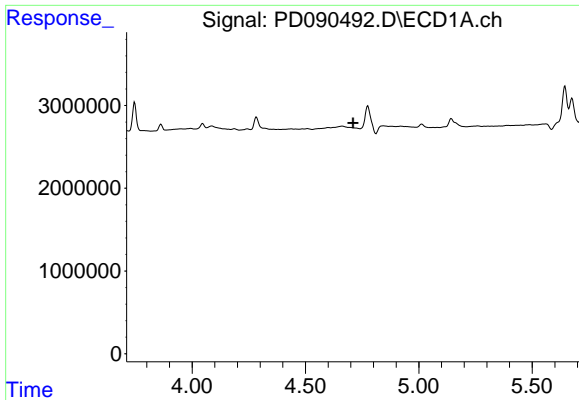
#21 Endrin ketone
 R.T.: 0.000 min
 Exp R.T. : 6.984 min
 Response: 0
 Conc: N.D.



#22 Mirex
 R.T.: 8.106 min
 Delta R.T.: -0.003 min
 Response: 13504566
 Conc: 3.65 ng/ml



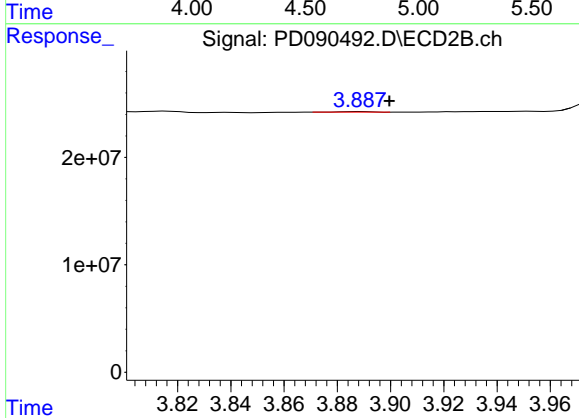
#22 Mirex
 R.T.: 7.173 min
 Delta R.T.: -0.005 min
 Response: 18961704
 Conc: 0.69 ng/ml



#23 Chlordane-1

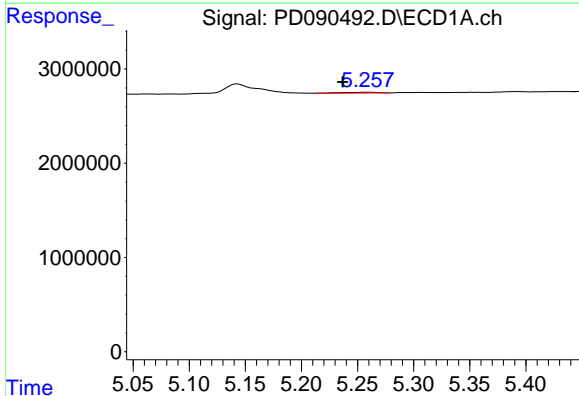
R.T.: 0.000 min
 Exp R.T.: 4.710 min
 Response: 0
 Conc: N.D.

Instrument :
 ECD_D
 ClientSampleId :
 I.BLK



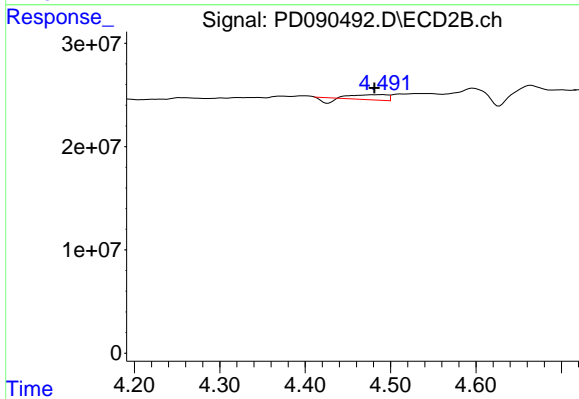
#23 Chlordane-1

R.T.: 3.889 min
 Delta R.T.: -0.011 min
 Response: 418961
 Conc: 0.35 ng/ml



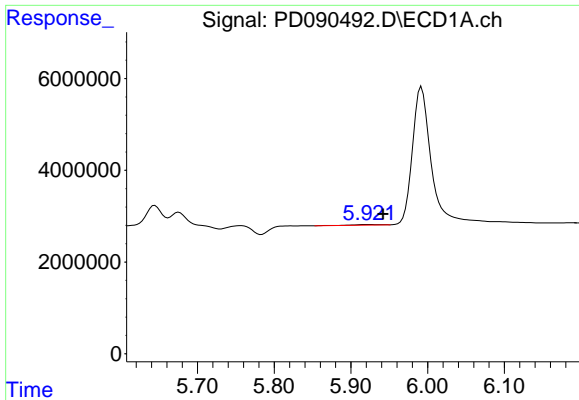
#24 Chlordane-2

R.T.: 5.258 min
 Delta R.T.: 0.021 min
 Response: 206529
 Conc: 0.96 ng/ml



#24 Chlordane-2

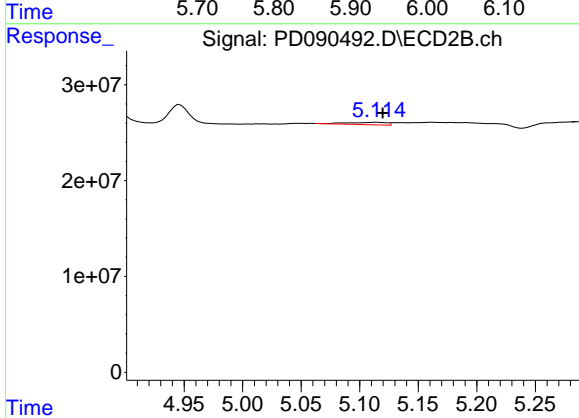
R.T.: 4.491 min
 Delta R.T.: 0.010 min
 Response: 10018047
 Conc: 8.01 ng/ml



#25 Chlordane-3

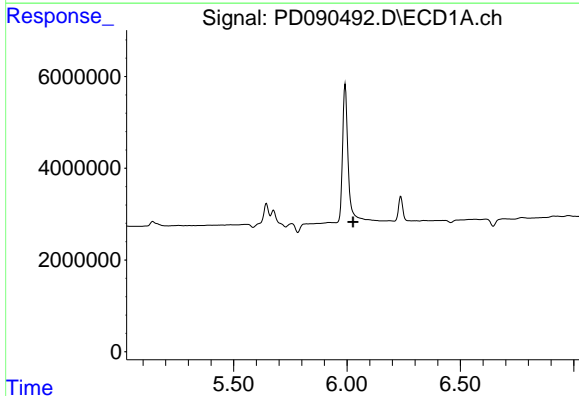
R.T.: 5.922 min
 Delta R.T.: -0.020 min
 Response: 254678
 Conc: 0.30 ng/ml

Instrument :
 ECD_D
 ClientSampleId :
 I.BLK



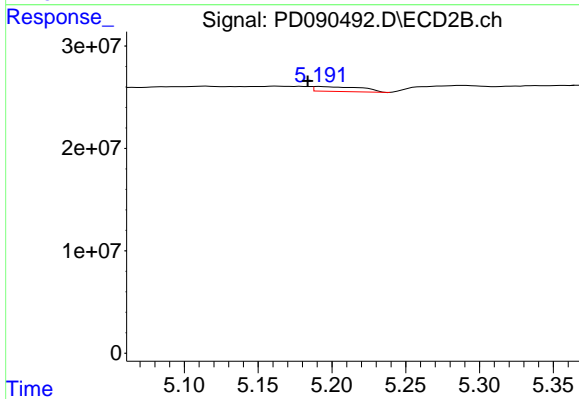
#25 Chlordane-3

R.T.: 5.115 min
 Delta R.T.: -0.005 min
 Response: 5814487
 Conc: 1.53 ng/ml



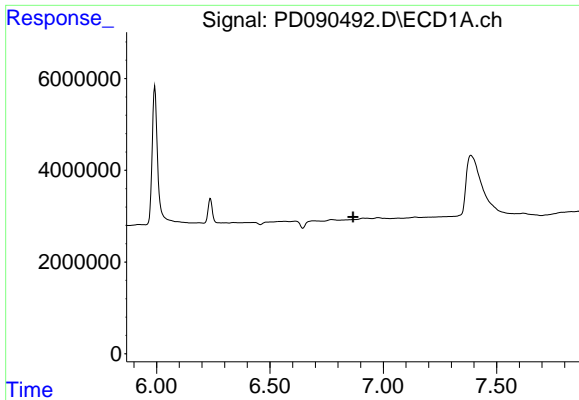
#26 Chlordane-4

R.T.: 0.000 min
 Exp R.T. : 6.027 min
 Response: 0
 Conc: N.D.



#26 Chlordane-4

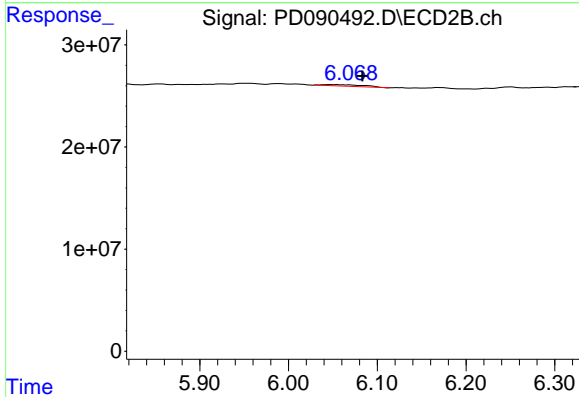
R.T.: 5.192 min
 Delta R.T.: 0.009 min
 Response: 10749046
 Conc: 3.30 ng/ml



#27 Chlordane-5

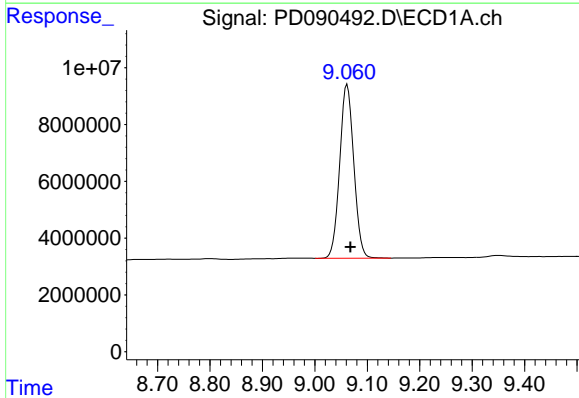
R.T.: 0.000 min
 Exp R.T.: 6.867 min
 Response: 0
 Conc: N.D.

Instrument :
 ECD_D
 ClientSampleId :
 I.BLK



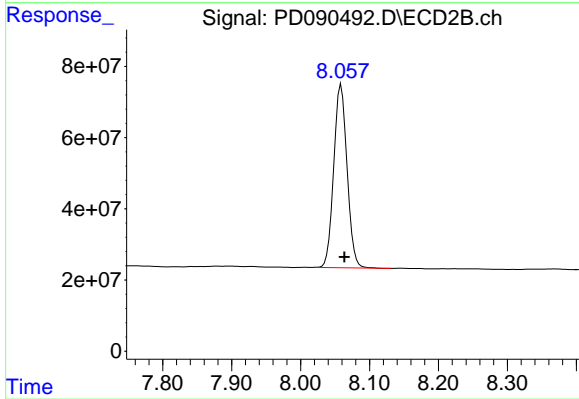
#27 Chlordane-5

R.T.: 6.048 min
 Delta R.T.: -0.036 min
 Response: 4882912
 Conc: 3.22 ng/ml



#28 Decachlorobiphenyl

R.T.: 9.062 min
 Delta R.T.: -0.006 min
 Response: 114386793
 Conc: 23.71 ng/ml



#28 Decachlorobiphenyl

R.T.: 8.059 min
 Delta R.T.: -0.005 min
 Response: 690944021
 Conc: 21.32 ng/ml