

Data Path : Z:\pestpcbsrv\HPCHEM1\ECD\_D\Data\PD100325\  
 Data File : PD090493.D  
 Signal(s) : Signal #1: ECD1A.ch Signal #2: ECD2B.ch  
 Acq On : 02 Oct 2025 14:28  
 Operator : AR\AJ  
 Sample : PEM  
 Misc :  
 ALS Vial : 3 Sample Multiplier: 1

Instrument :  
 ECD\_D  
 ClientSampleId :  
 PEM

Integration File signal 1: autoint1.e  
 Integration File signal 2: autoint2.e  
 Quant Time: Oct 03 02:44:34 2025  
 Quant Method : Z:\pestpcbsrv\HPCHEM1\ECD\_D\Method\PD091825.M  
 Quant Title : GC Extractables  
 QLast Update : Fri Sep 19 05:52:38 2025  
 Response via : Initial Calibration  
 Integrator: ChemStation

Volume Inj. : 1 µl  
 Signal #1 Phase : ZB-MR2 Signal #2 Phase: ZB-MR2  
 Signal #1 Info : 30M x 0.32mm x0.5 Signal #2 Info : 30M x 0.32mm x 0.25µm

Compound	RT#1	RT#2	Resp#1	Resp#2	ng/ml	ng/ml
System Monitoring Compounds						
1) SA Tetrachlo...	3.545	2.874	61637780	492.8E6	18.963	17.952
28) SA Decachlor...	9.061	8.059	105.2E6	641.1E6	21.813	19.778
Target Compounds						
2) A alpha-BHC	3.993	3.386	58984228	407.8E6	8.445	9.313
3) MA gamma-BHC...	4.324	3.722	58136161	383.5E6	8.786	9.415
4) MA Heptachlor	4.900f	4.082	335059	289302	0.051	0.007 #
5) MB Aldrin	0.000	4.356	0	2476194	N.D.	0.062 #
6) B beta-BHC	4.511	4.018	24734466	164.4E6	9.587	9.482
7) B delta-BHC	4.770	4.255	753673	404033	0.117	0.010 #
8) B Heptachlo...	5.676	4.886f	1655858	12864025	0.290	0.349
9) A Endosulfan I	0.000	5.224f	0	3323706	N.D.	0.096 #
10) B gamma-Chl...	0.000	5.118	0	2915727	N.D.	0.074 #
11) B alpha-Chl...	5.992f	5.186	-260023	3946225	N.D.	0.105
12) B 4,4'-DDE	6.189	5.369	404311	3146239	0.078	0.082
13) MA Dieldrin	6.361f	5.502	152733	1545475	0.026	0.040 #
14) MA Endrin	6.566	5.779	247.2E6	1609.7E6	50.512	44.923
15) B Endosulfa...	6.796	6.077	4770797	2417097	0.978	0.072 #
16) A 4,4'-DDD	6.698	5.920	6522037	31240207	1.592	0.963 #
17) MA 4,4'-DDT	7.014	6.172	456.7E6	2993.2E6	102.581	87.066
18) B Endrin al...	6.909	6.246	2149262	16659226	0.626	0.707
19) B Endosulfa...	0.000	6.473	0	634275	N.D.	0.019 #
20) A Methoxychlor	7.486	6.743	567.6E6	3312.0E6	240.882	190.343
21) B Endrin ke...	7.622	6.980	3738244	13774627	0.756	0.382 #
22) Mirex	0.000	7.167	0	7262051	N.D.	0.263 #
24) Chlordane-2	0.000	4.502f	0	5755739	N.D.	4.603 #
25) Chlordane-3	0.000	5.118	0	2915727	N.D.	0.769 #
26) Chlordane-4	0.000	5.186	0	3946225	N.D.	1.212 #
27) Chlordane-5	6.870	6.077	871279	2417097	4.894	1.593 #

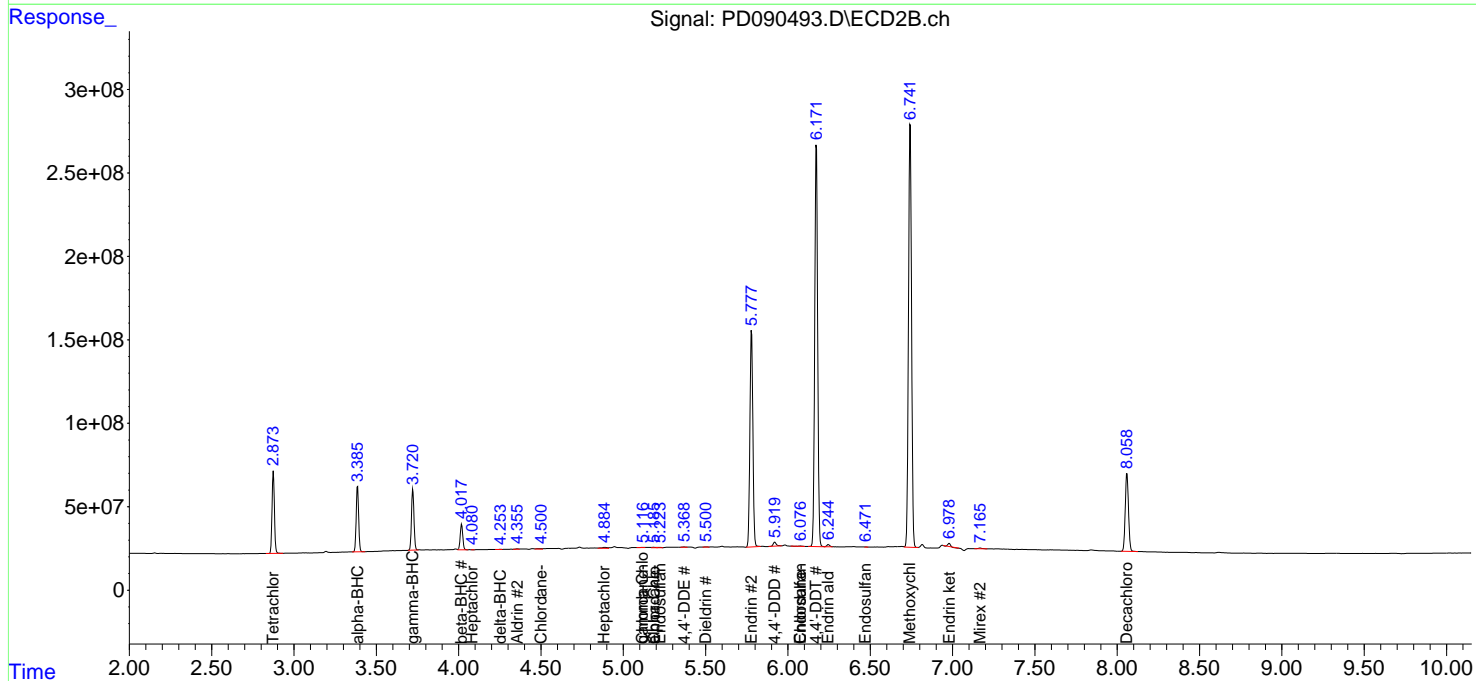
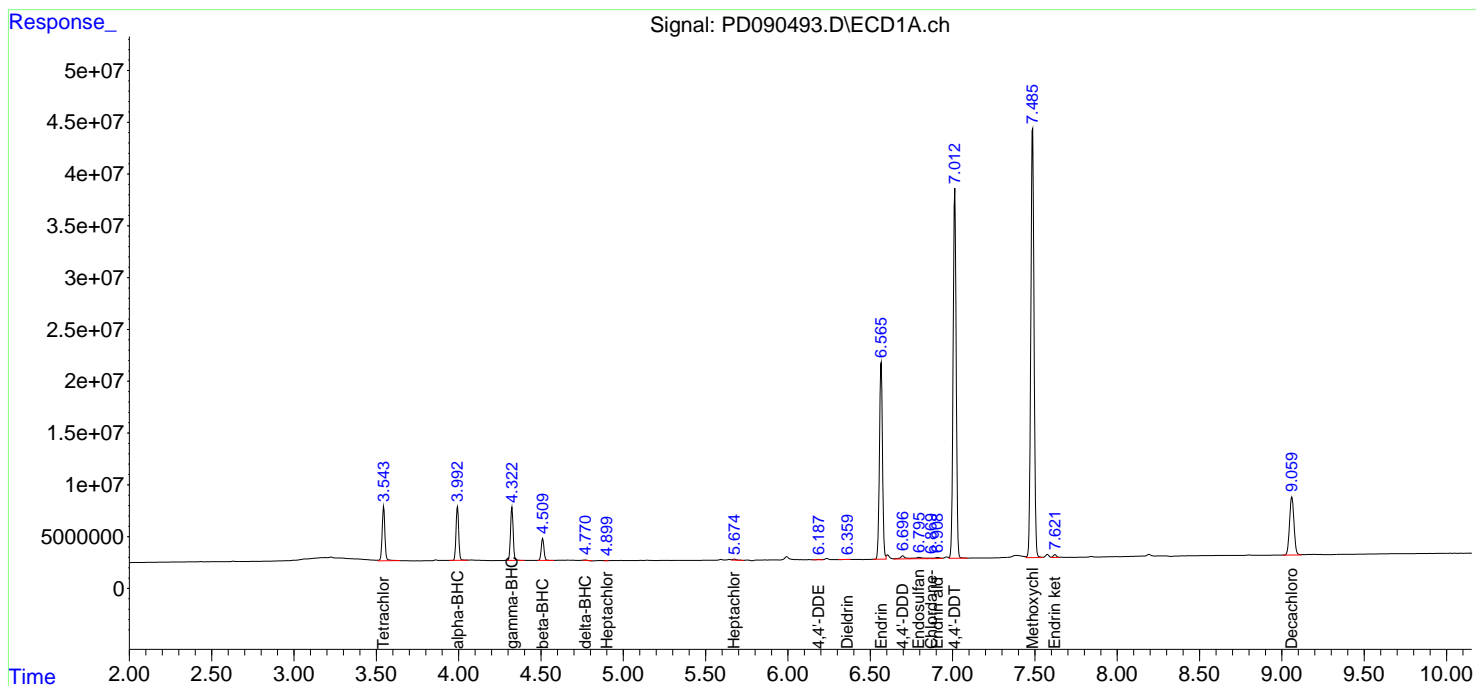
(f)=RT Delta > 1/2 Window (#)=Amounts differ by > 25% (m)=manual int.

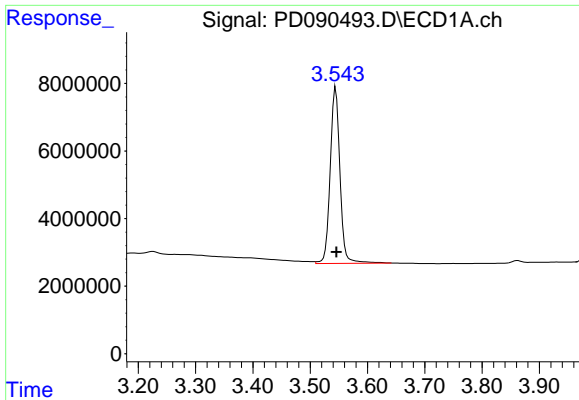
Data Path : Z:\pestpcbsrv\HPCHEM1\ECD\_D\Data\PD100325\  
 Data File : PD090493.D  
 Signal(s) : Signal #1: ECD1A.ch Signal #2: ECD2B.ch  
 Acq On : 02 Oct 2025 14:28  
 Operator : AR\AJ  
 Sample : PEM  
 Misc :  
 ALS Vial : 3 Sample Multiplier: 1

Instrument :  
 ECD\_D  
 ClientSampleId :  
 PEM

Integration File signal 1: autoint1.e  
 Integration File signal 2: autoint2.e  
 Quant Time: Oct 03 02:44:34 2025  
 Quant Method : Z:\pestpcbsrv\HPCHEM1\ECD\_D\Method\PD091825.M  
 Quant Title : GC Extractables  
 QLast Update : Fri Sep 19 05:52:38 2025  
 Response via : Initial Calibration  
 Integrator: ChemStation

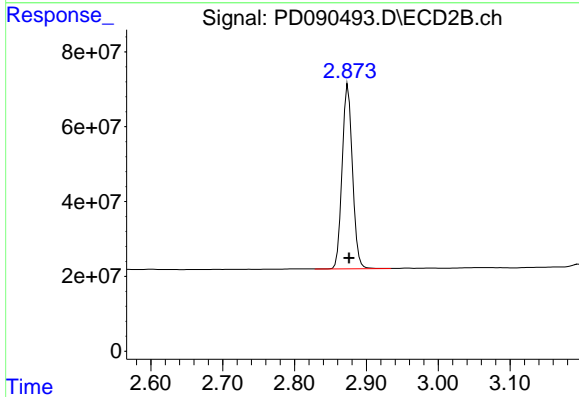
Volume Inj. : 1 µl  
 Signal #1 Phase : ZB-MR1 Signal #2 Phase: ZB-MR2  
 Signal #1 Info : 30M x 0.32mm x0.5 Signal #2 Info : 30M x 0.32mm x 0.25µm



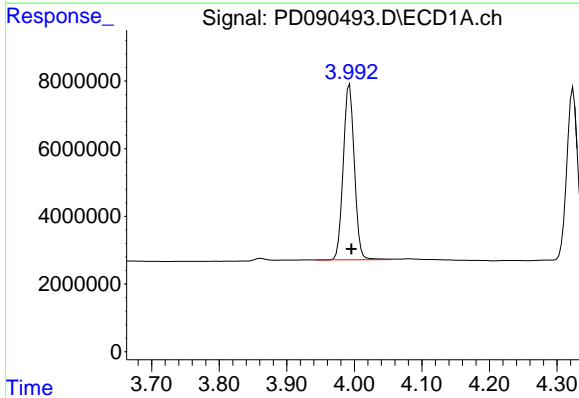


#1 Tetrachloro-m-xylene  
 R.T.: 3.545 min  
 Delta R.T.: -0.001 min  
 Response: 61637780  
 Conc: 18.96 ng/ml

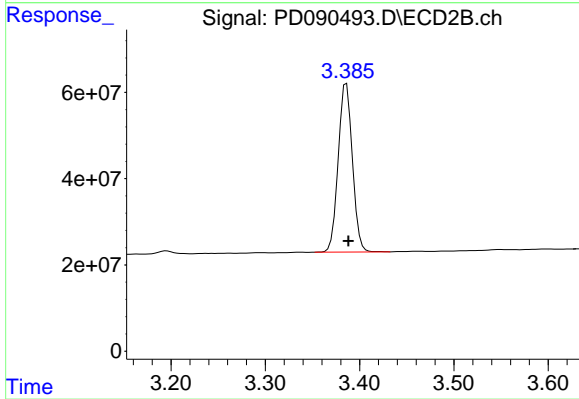
Instrument :  
 ECD\_D  
 ClientSampleId :  
 PEM



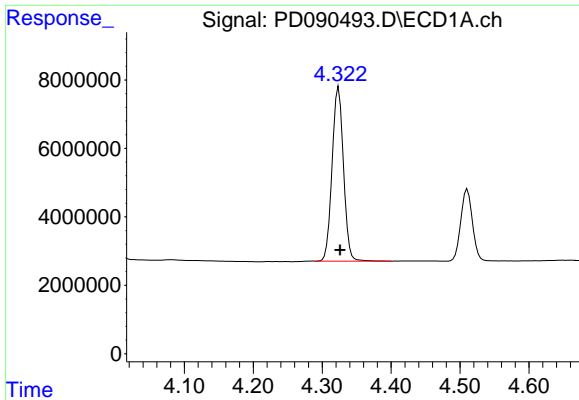
#1 Tetrachloro-m-xylene  
 R.T.: 2.874 min  
 Delta R.T.: -0.001 min  
 Response: 492786734  
 Conc: 17.95 ng/ml



#2 alpha-BHC  
 R.T.: 3.993 min  
 Delta R.T.: -0.002 min  
 Response: 58984228  
 Conc: 8.44 ng/ml

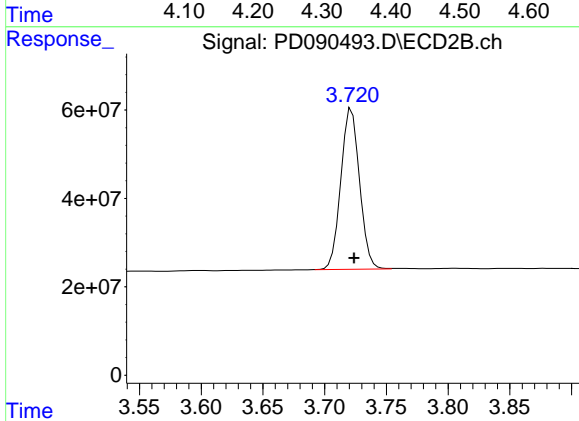


#2 alpha-BHC  
 R.T.: 3.386 min  
 Delta R.T.: -0.002 min  
 Response: 407767682  
 Conc: 9.31 ng/ml

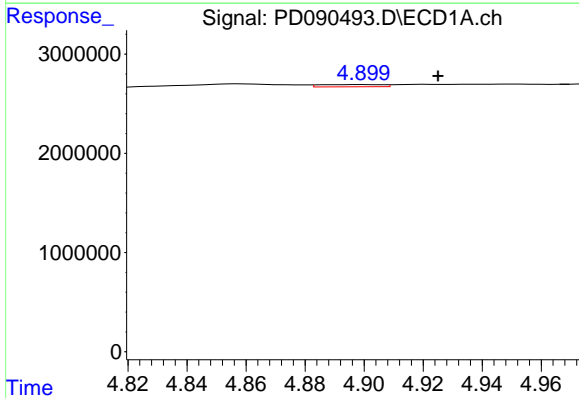


#3 gamma-BHC (Lindane)  
 R.T.: 4.324 min  
 Delta R.T.: -0.002 min  
 Response: 58136161  
 Conc: 8.79 ng/ml

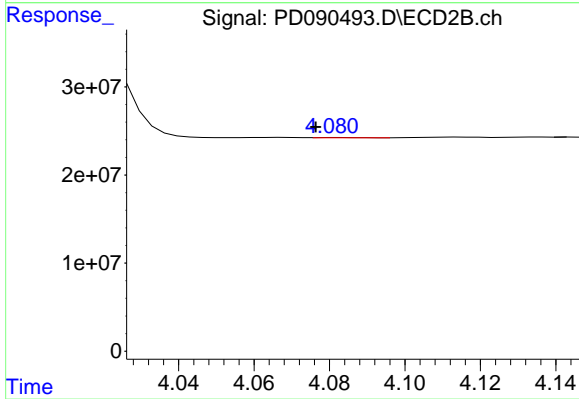
Instrument :  
 ECD\_D  
 ClientSampleId :  
 PEM



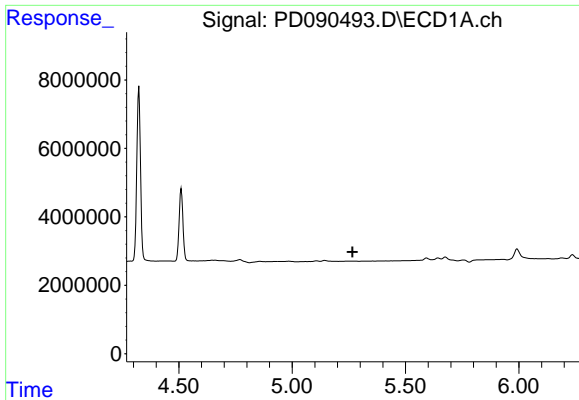
#3 gamma-BHC (Lindane)  
 R.T.: 3.722 min  
 Delta R.T.: -0.002 min  
 Response: 383536935  
 Conc: 9.42 ng/ml



#4 Heptachlor  
 R.T.: 4.900 min  
 Delta R.T.: -0.025 min  
 Response: 335059  
 Conc: 0.05 ng/ml

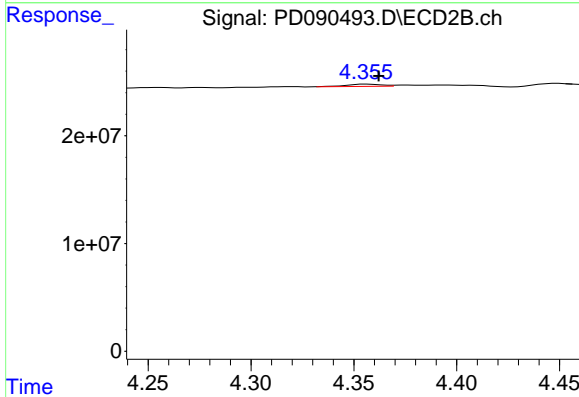


#4 Heptachlor  
 R.T.: 4.082 min  
 Delta R.T.: 0.005 min  
 Response: 289302  
 Conc: 0.01 ng/ml

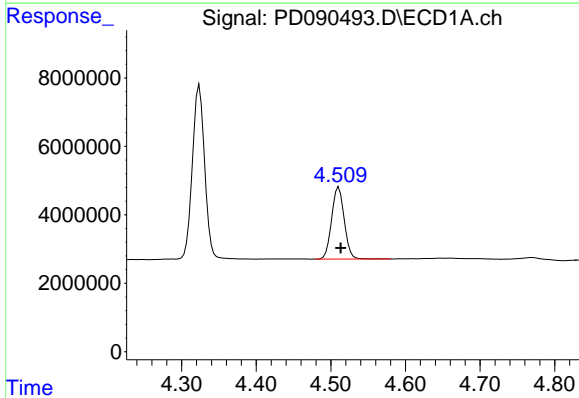


#5 Aldrin  
 R.T.: 0.000 min  
 Exp R.T.: 5.266 min  
 Response: 0  
 Conc: N.D.

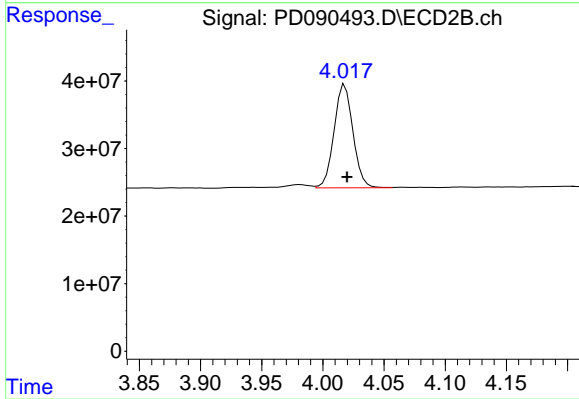
Instrument :  
 ECD\_D  
 ClientSampleId :  
 PEM



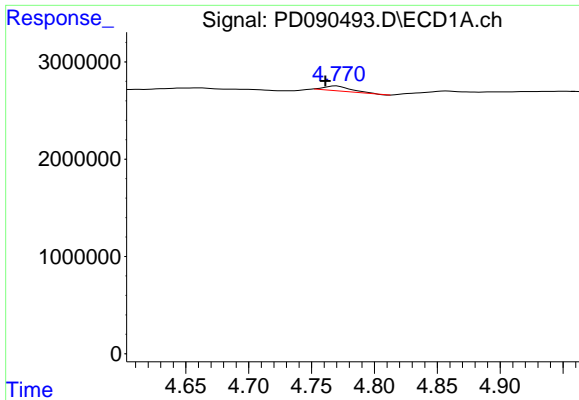
#5 Aldrin  
 R.T.: 4.356 min  
 Delta R.T.: -0.006 min  
 Response: 2476194  
 Conc: 0.06 ng/ml



#6 beta-BHC  
 R.T.: 4.511 min  
 Delta R.T.: -0.003 min  
 Response: 24734466  
 Conc: 9.59 ng/ml



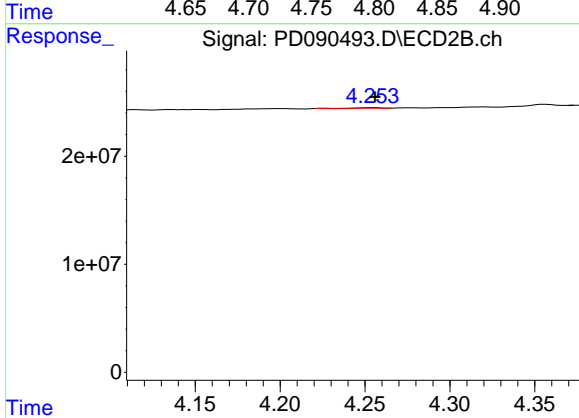
#6 beta-BHC  
 R.T.: 4.018 min  
 Delta R.T.: -0.002 min  
 Response: 164371111  
 Conc: 9.48 ng/ml



#7 delta-BHC

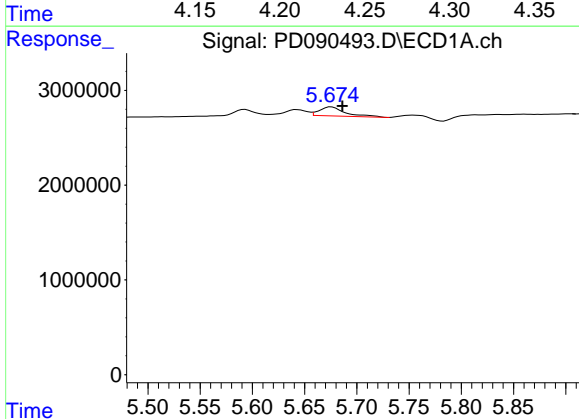
R.T.: 4.770 min  
 Delta R.T.: 0.009 min  
 Response: 753673  
 Conc: 0.12 ng/ml

Instrument :  
 ECD\_D  
 ClientSampleId :  
 PEM



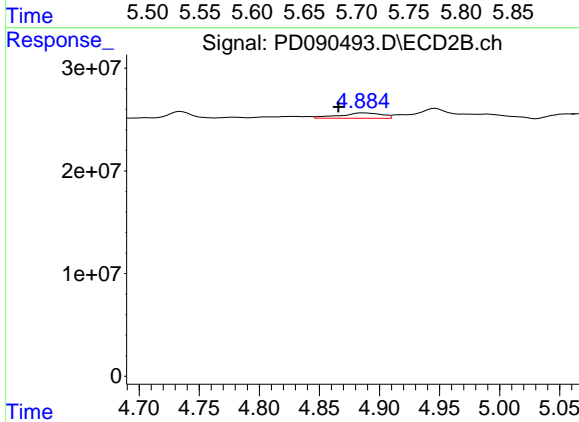
#7 delta-BHC

R.T.: 4.255 min  
 Delta R.T.: 0.000 min  
 Response: 404033  
 Conc: 0.01 ng/ml



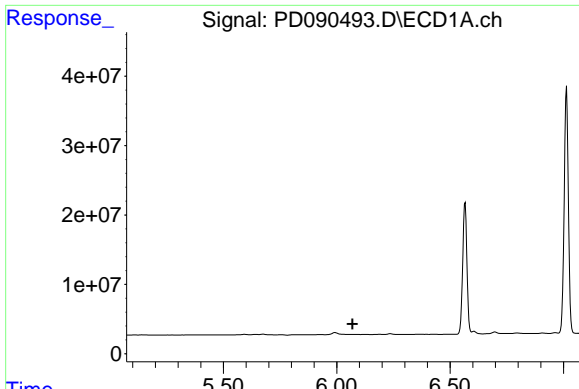
#8 Heptachlor epoxide

R.T.: 5.676 min  
 Delta R.T.: -0.011 min  
 Response: 1655858  
 Conc: 0.29 ng/ml



#8 Heptachlor epoxide

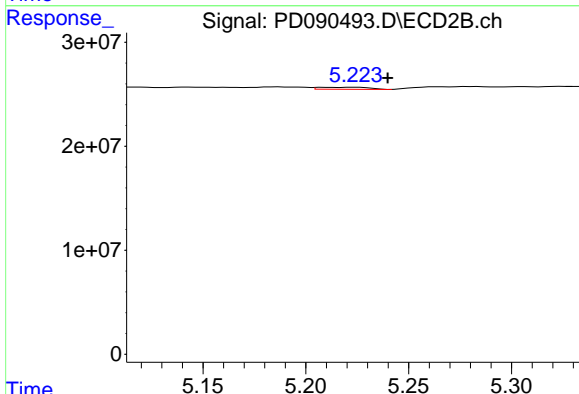
R.T.: 4.886 min  
 Delta R.T.: 0.020 min  
 Response: 12864025  
 Conc: 0.35 ng/ml



#9 Endosulfan I

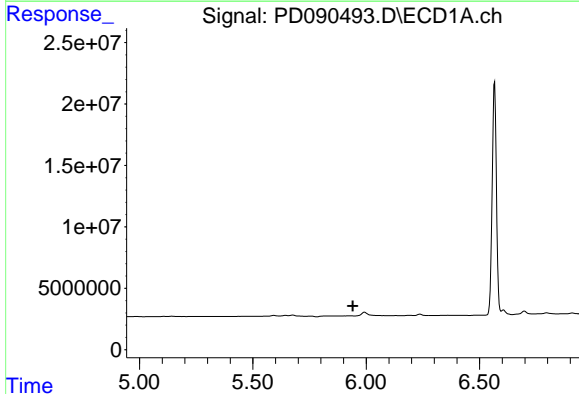
R.T.: 0.000 min  
 Exp R.T.: 6.070 min  
 Response: 0  
 Conc: N.D.

Instrument :  
 ECD\_D  
 ClientSampleId :  
 PEM



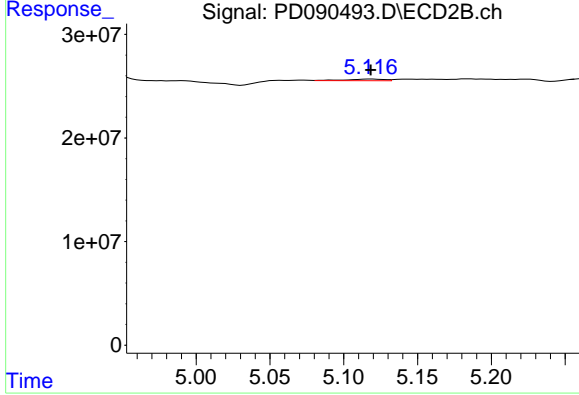
#9 Endosulfan I

R.T.: 5.224 min  
 Delta R.T.: -0.016 min  
 Response: 3323706  
 Conc: 0.10 ng/ml



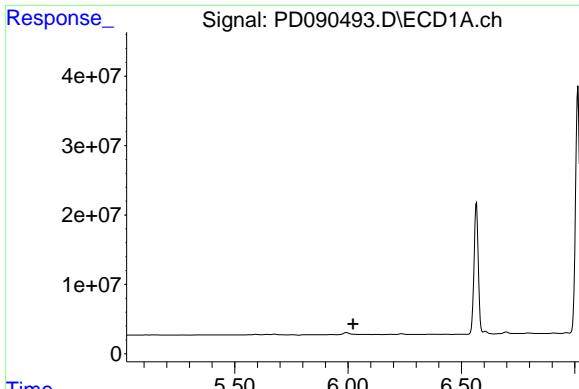
#10 gamma-Chlordane

R.T.: 0.000 min  
 Exp R.T.: 5.942 min  
 Response: 0  
 Conc: N.D.



#10 gamma-Chlordane

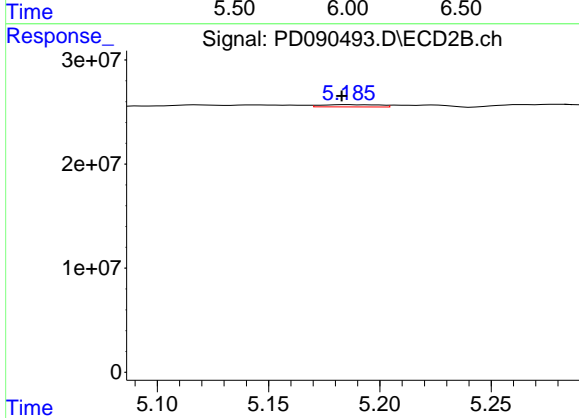
R.T.: 5.118 min  
 Delta R.T.: 0.000 min  
 Response: 2915727  
 Conc: 0.07 ng/ml



#11 alpha-Chlordane

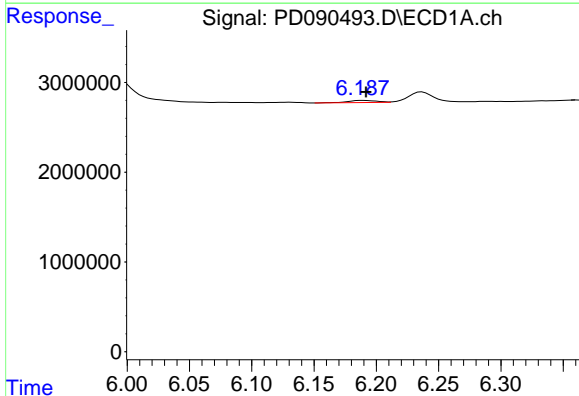
R.T.: 5.992 min  
 Delta R.T.: -0.030 min  
 Response: -260023  
 Conc: N.D.

Instrument :  
 ECD\_D  
 ClientSampleId :  
 PEM



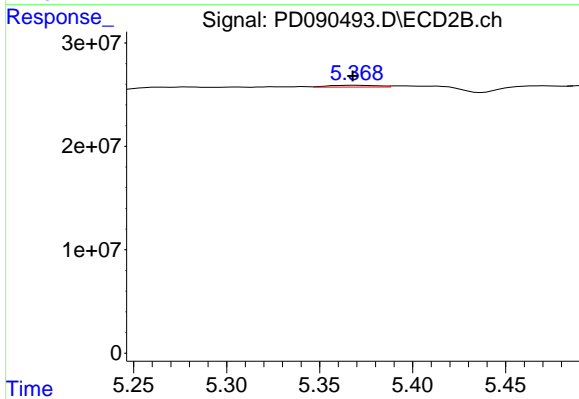
#11 alpha-Chlordane

R.T.: 5.186 min  
 Delta R.T.: 0.003 min  
 Response: 3946225  
 Conc: 0.10 ng/ml



#12 4,4'-DDE

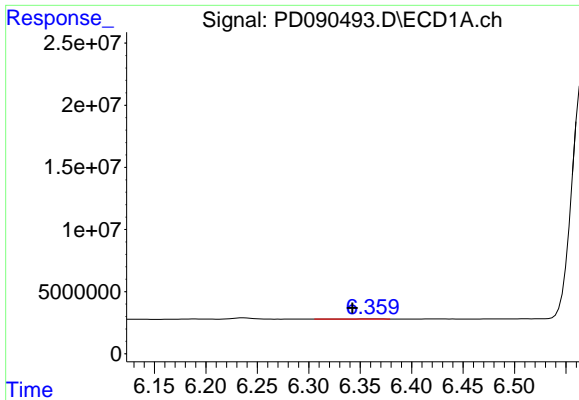
R.T.: 6.189 min  
 Delta R.T.: -0.003 min  
 Response: 404311  
 Conc: 0.08 ng/ml



#12 4,4'-DDE

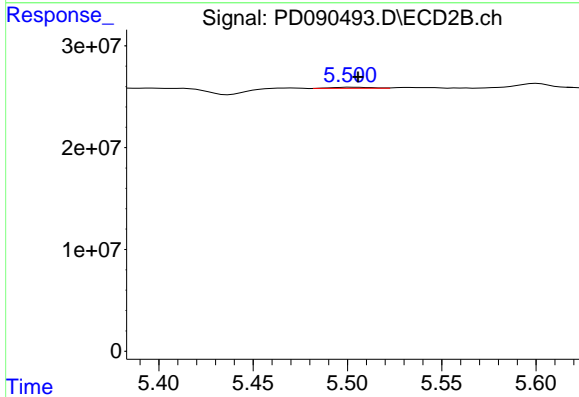
R.T.: 5.369 min  
 Delta R.T.: 0.002 min  
 Response: 3146239  
 Conc: 0.08 ng/ml



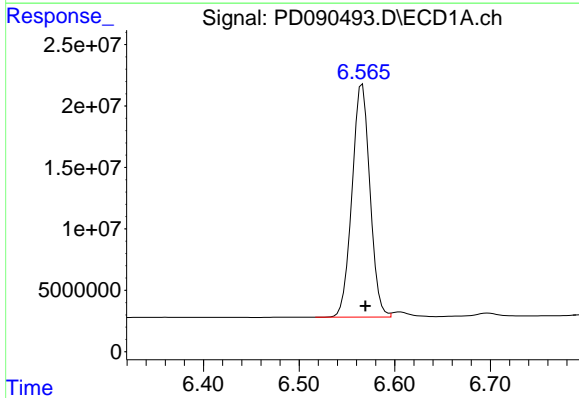


#13 Dieldrin  
 R.T.: 6.361 min  
 Delta R.T.: 0.018 min  
 Response: 152733  
 Conc: 0.03 ng/ml

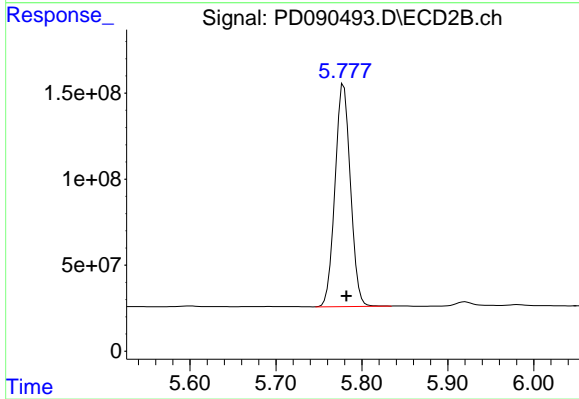
Instrument :  
 ECD\_D  
 ClientSampleId :  
 PEM



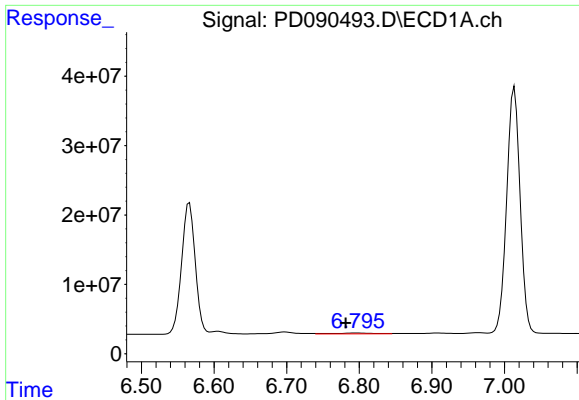
#13 Dieldrin  
 R.T.: 5.502 min  
 Delta R.T.: -0.004 min  
 Response: 1545475  
 Conc: 0.04 ng/ml



#14 Endrin  
 R.T.: 6.566 min  
 Delta R.T.: -0.003 min  
 Response: 247200184  
 Conc: 50.51 ng/ml



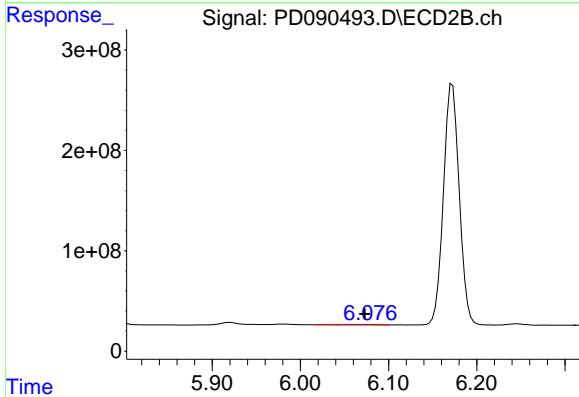
#14 Endrin  
 R.T.: 5.779 min  
 Delta R.T.: -0.003 min  
 Response: 1609674259  
 Conc: 44.92 ng/ml



#15 Endosulfan II

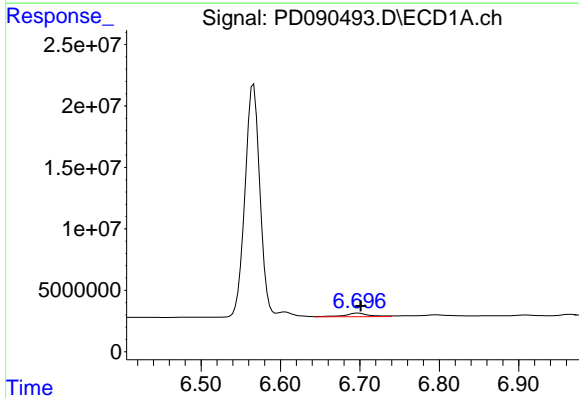
R.T.: 6.796 min  
 Delta R.T.: 0.014 min  
 Response: 4770797  
 Conc: 0.98 ng/ml

Instrument :  
 ECD\_D  
 ClientSampleId :  
 PEM



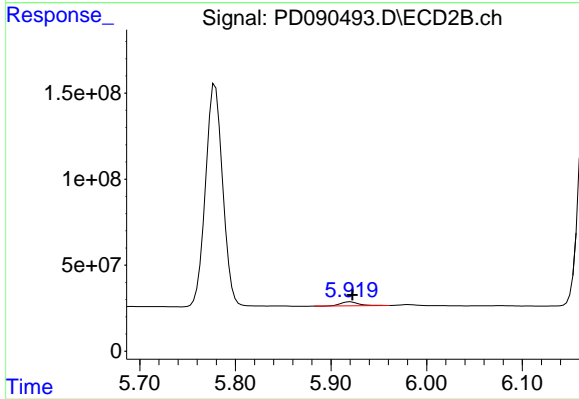
#15 Endosulfan II

R.T.: 6.077 min  
 Delta R.T.: 0.003 min  
 Response: 2417097  
 Conc: 0.07 ng/ml



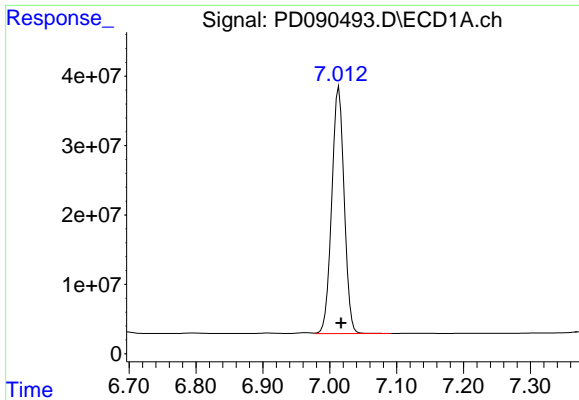
#16 4,4'-DDD

R.T.: 6.698 min  
 Delta R.T.: -0.004 min  
 Response: 6522037  
 Conc: 1.59 ng/ml



#16 4,4'-DDD

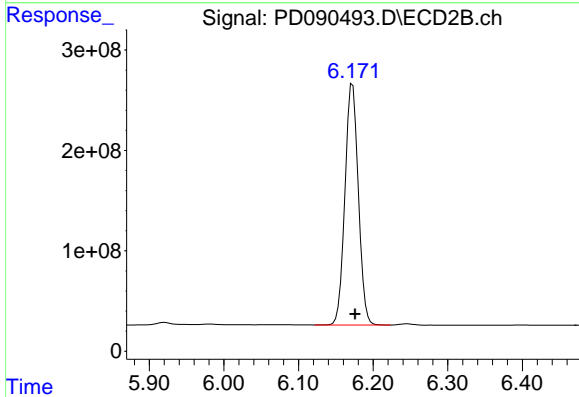
R.T.: 5.920 min  
 Delta R.T.: -0.002 min  
 Response: 31240207  
 Conc: 0.96 ng/ml



#17 4,4'-DDT

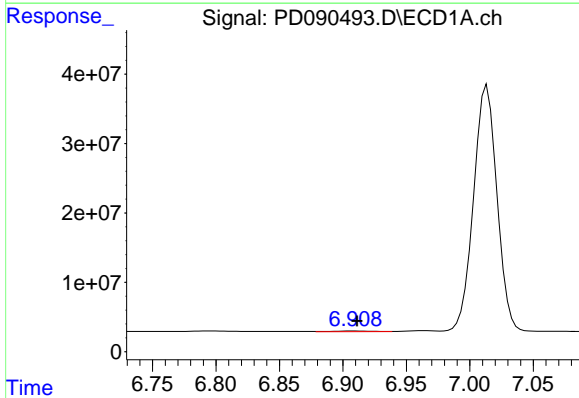
R.T.: 7.014 min  
 Delta R.T.: -0.003 min  
 Response: 456738967  
 Conc: 102.58 ng/ml

Instrument :  
 ECD\_D  
 ClientSampleId :  
 PEM



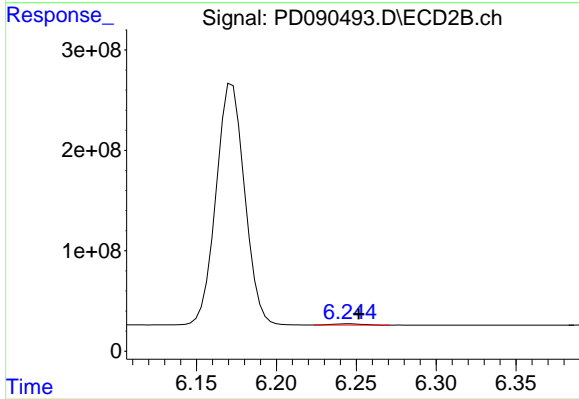
#17 4,4'-DDT

R.T.: 6.172 min  
 Delta R.T.: -0.003 min  
 Response: 2993248631  
 Conc: 87.07 ng/ml



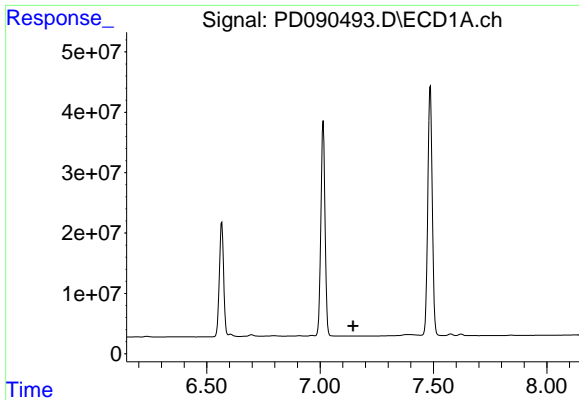
#18 Endrin aldehyde

R.T.: 6.909 min  
 Delta R.T.: -0.002 min  
 Response: 2149262  
 Conc: 0.63 ng/ml



#18 Endrin aldehyde

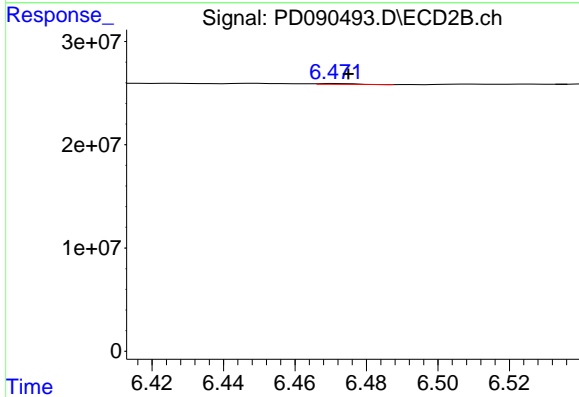
R.T.: 6.246 min  
 Delta R.T.: -0.006 min  
 Response: 16659226  
 Conc: 0.71 ng/ml



#19 Endosulfan Sulfate

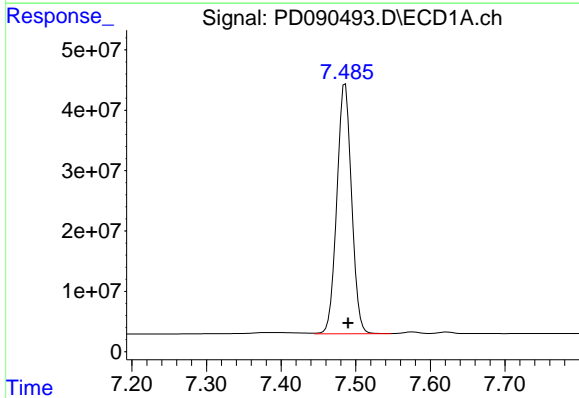
R.T.: 0.000 min  
 Exp R.T.: 7.146 min  
 Response: 0  
 Conc: N.D.

Instrument :  
 ECD\_D  
 ClientSampleId :  
 PEM



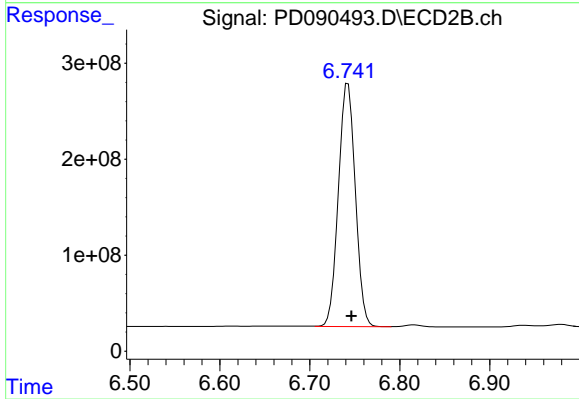
#19 Endosulfan Sulfate

R.T.: 6.473 min  
 Delta R.T.: -0.002 min  
 Response: 634275  
 Conc: 0.02 ng/ml



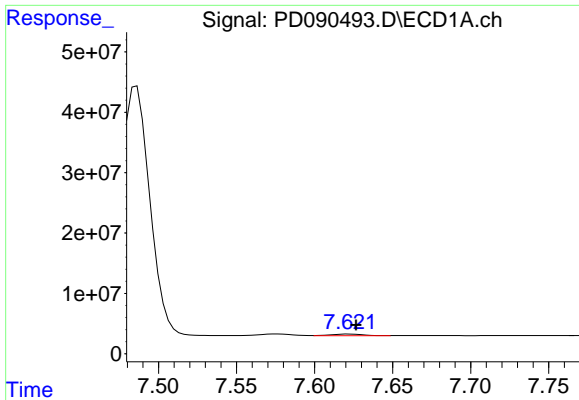
#20 Methoxychlor

R.T.: 7.486 min  
 Delta R.T.: -0.004 min  
 Response: 567639945  
 Conc: 240.88 ng/ml



#20 Methoxychlor

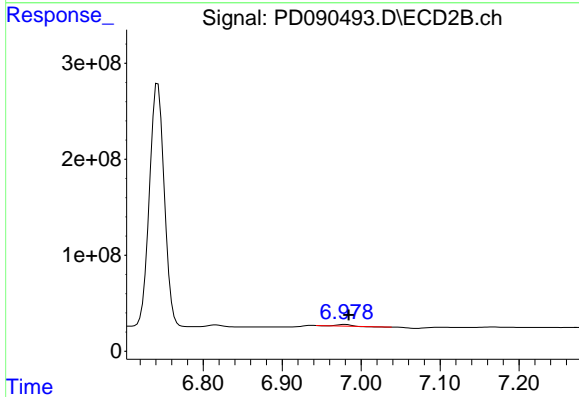
R.T.: 6.743 min  
 Delta R.T.: -0.003 min  
 Response: 3312031564  
 Conc: 190.34 ng/ml



#21 Endrin ketone

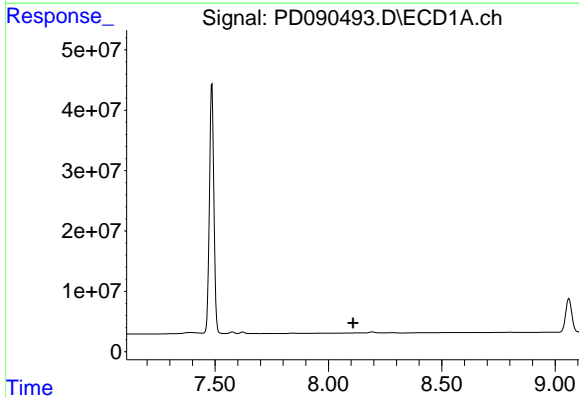
R.T.: 7.622 min  
 Delta R.T.: -0.004 min  
 Response: 3738244  
 Conc: 0.76 ng/ml

Instrument :  
 ECD\_D  
 ClientSampleId :  
 PEM



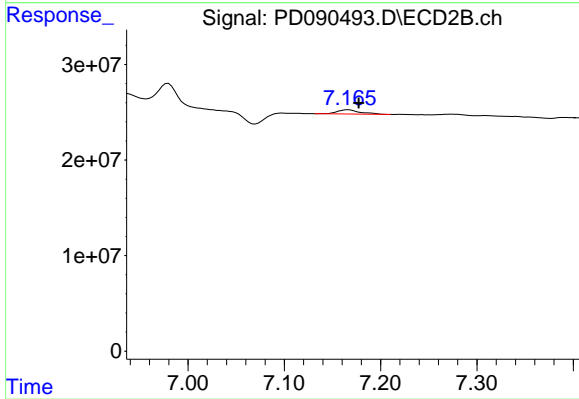
#21 Endrin ketone

R.T.: 6.980 min  
 Delta R.T.: -0.005 min  
 Response: 13774627  
 Conc: 0.38 ng/ml



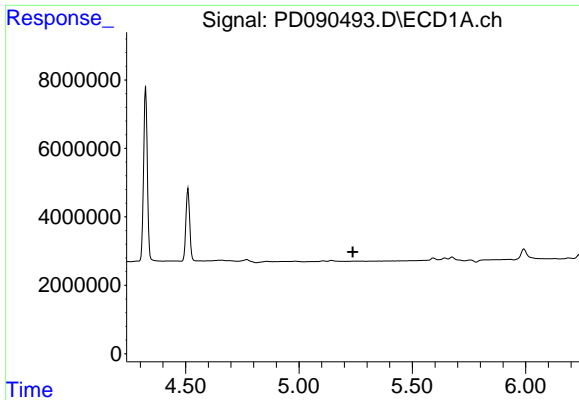
#22 Mirex

R.T.: 0.000 min  
 Exp R.T. : 8.109 min  
 Response: 0  
 Conc: N.D.



#22 Mirex

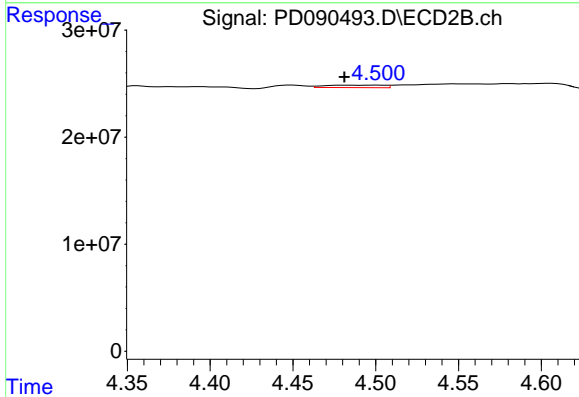
R.T.: 7.167 min  
 Delta R.T.: -0.011 min  
 Response: 7262051  
 Conc: 0.26 ng/ml



#24 Chlordane-2

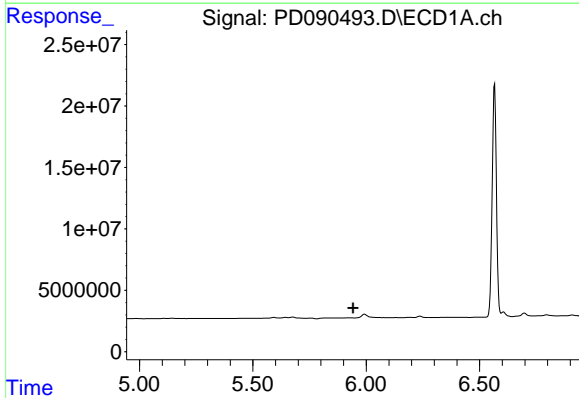
R.T.: 0.000 min  
 Exp R.T.: 5.237 min  
 Response: 0  
 Conc: N.D.

Instrument :  
 ECD\_D  
 ClientSampleId :  
 PEM



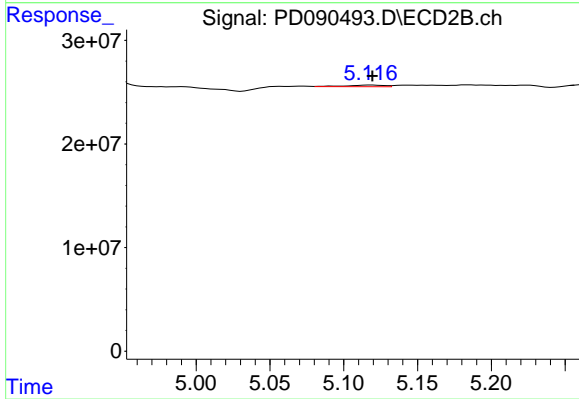
#24 Chlordane-2

R.T.: 4.502 min  
 Delta R.T.: 0.021 min  
 Response: 5755739  
 Conc: 4.60 ng/ml



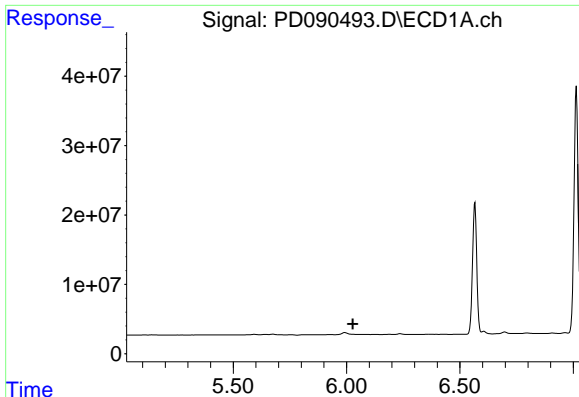
#25 Chlordane-3

R.T.: 0.000 min  
 Exp R.T.: 5.942 min  
 Response: 0  
 Conc: N.D.



#25 Chlordane-3

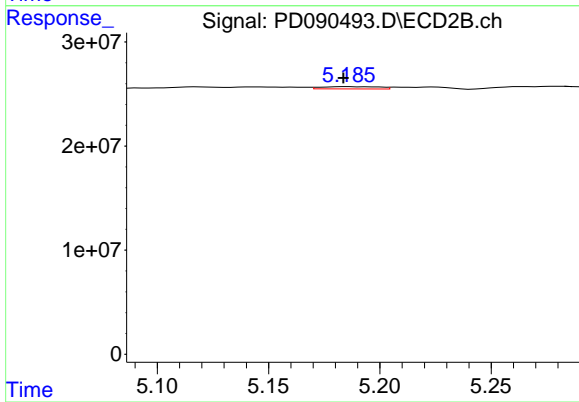
R.T.: 5.118 min  
 Delta R.T.: -0.002 min  
 Response: 2915727  
 Conc: 0.77 ng/ml



#26 Chlordane-4

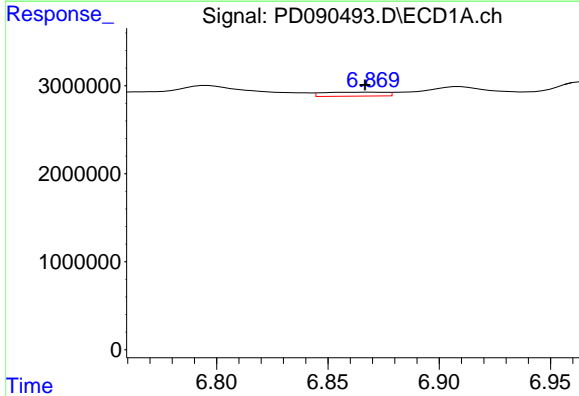
R.T.: 0.000 min  
 Exp R.T.: 6.027 min  
 Response: 0  
 Conc: N.D.

Instrument :  
 ECD\_D  
 ClientSampleId :  
 PEM



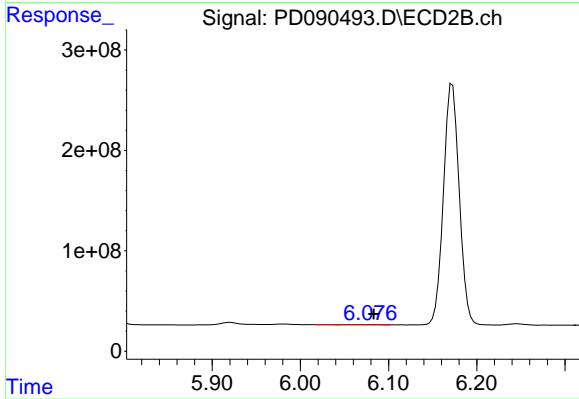
#26 Chlordane-4

R.T.: 5.186 min  
 Delta R.T.: 0.002 min  
 Response: 3946225  
 Conc: 1.21 ng/ml



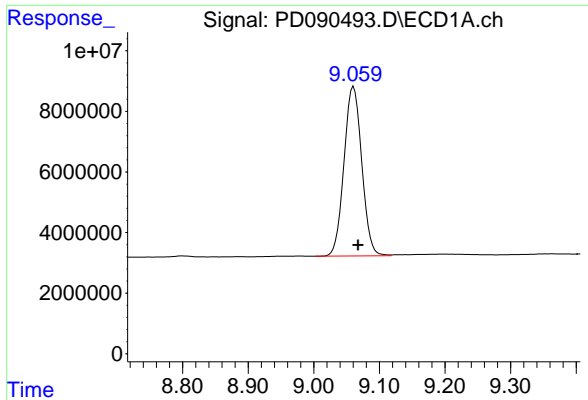
#27 Chlordane-5

R.T.: 6.870 min  
 Delta R.T.: 0.003 min  
 Response: 871279  
 Conc: 4.89 ng/ml



#27 Chlordane-5

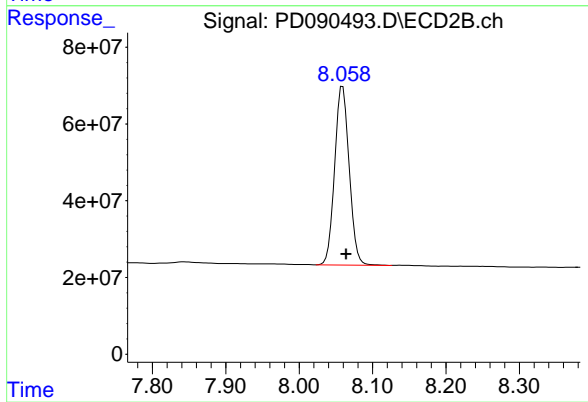
R.T.: 6.077 min  
 Delta R.T.: -0.007 min  
 Response: 2417097  
 Conc: 1.59 ng/ml



#28 Decachlorobiphenyl

R.T.: 9.061 min  
Delta R.T.: -0.007 min  
Response: 105248059  
Conc: 21.81 ng/ml

Instrument :  
ECD\_D  
ClientSampleId :  
PEM



#28 Decachlorobiphenyl

R.T.: 8.059 min  
Delta R.T.: -0.005 min  
Response: 641093543  
Conc: 19.78 ng/ml