

Data Path : Z:\pestpcbsrv\HPCHEM1\ECD_D\Data\PD100325\
 Data File : PD090495.D
 Signal(s) : Signal #1: ECD1A.ch Signal #2: ECD2B.ch
 Acq On : 02 Oct 2025 14:55
 Operator : AR\AJ
 Sample : PB169957BL
 Misc :
 ALS Vial : 5 Sample Multiplier: 1

Instrument :
 ECD_D
 ClientSampleId :
 PB169957BL

Integration File signal 1: autoint1.e
 Integration File signal 2: autoint2.e
 Quant Time: Oct 03 02:44:55 2025
 Quant Method : Z:\pestpcbsrv\HPCHEM1\ECD_D\Method\PD091825.M
 Quant Title : GC Extractables
 QLast Update : Fri Sep 19 05:52:38 2025
 Response via : Initial Calibration
 Integrator: ChemStation

Volume Inj. : 1 µl
 Signal #1 Phase : ZB-MR2 Signal #2 Phase: ZB-MR2
 Signal #1 Info : 30M x 0.32mm x0.5 Signal #2 Info : 30M x 0.32mm x 0.25µm

Compound	RT#1	RT#2	Resp#1	Resp#2	ng/ml	ng/ml
System Monitoring Compounds						
1) SA Tetrachlo...	3.545	2.875	48182098	379.8E6	14.823	13.837
28) SA Decachlor...	9.062	8.061	83330027	498.7E6	17.270	15.386
Target Compounds						
2) A alpha-BHC	0.000	3.392	0	366189	N.D.	0.008 #
3) MA gamma-BHC...	0.000	3.714	0	1218365	N.D.	0.030 #
4) MA Heptachlor	4.915	4.067	312853	270780	0.047	0.007 #
5) MB Aldrin	0.000	4.372	0	468891	N.D.	0.012 #
6) B beta-BHC	0.000	4.030	0	844801	N.D.	0.049 #
7) B delta-BHC	4.774	4.252	2090210	184470	0.324	0.004 #
8) B Heptachlo...	5.673	4.888f	1233580	29948395	0.216	0.812 #
9) A Endosulfan I	0.000	5.252	0	221821	N.D.	0.006 #
10) B gamma-Chl...	0.000	5.112	0	89015	N.D.	0.002 #
12) B 4,4'-DDE	0.000	5.374	0	504790	N.D.	0.013 #
13) MA Dieldrin	0.000	5.503	0	1659267	N.D.	0.043 #
14) MA Endrin	0.000	5.786	0	8343576	N.D.	0.233 #
15) B Endosulfa...	6.790	6.076	157939	2065474	0.032	0.061 #
16) A 4,4'-DDD	6.696	0.000	156813	0	0.038	N.D. #
17) MA 4,4'-DDT	7.015	6.178	43963	1701547	0.010	0.049 #
18) B Endrin al...	6.928f	6.236f	571849	1580179	0.167	0.067 #
19) B Endosulfa...	0.000	6.469	0	484001	N.D.	0.015 #
21) B Endrin ke...	7.625	0.000	208711	0	0.042	N.D. #
22) Mirex	0.000	7.173	0	221559	N.D.	0.008 #
23) Chlordane-1	0.000	3.899	0	257164	N.D.	0.214 #
24) Chlordane-2	0.000	4.485	0	822409	N.D.	0.658 #
25) Chlordane-3	0.000	5.112	0	89015	N.D.	0.023 #
26) Chlordane-4	0.000	5.195	0	522648	N.D.	0.161 #
27) Chlordane-5	0.000	6.076	0	2065474	N.D.	1.361 #

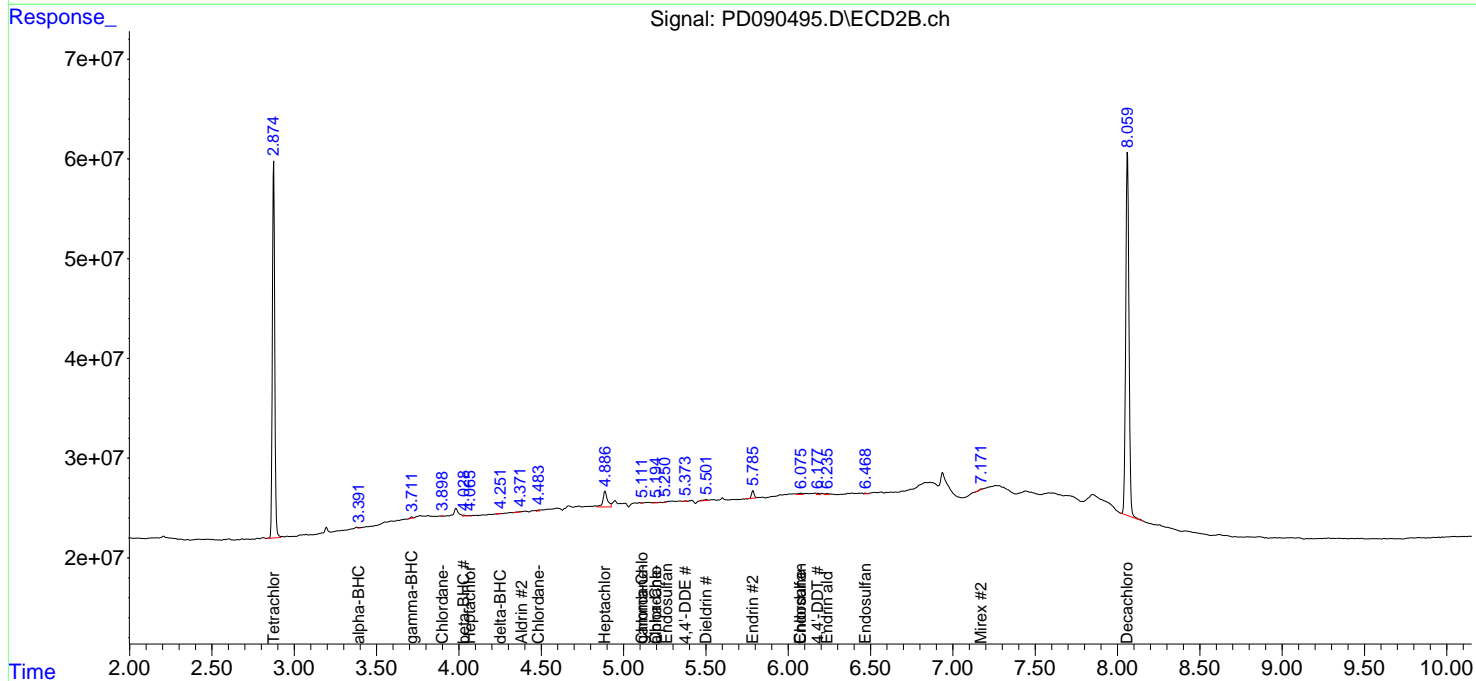
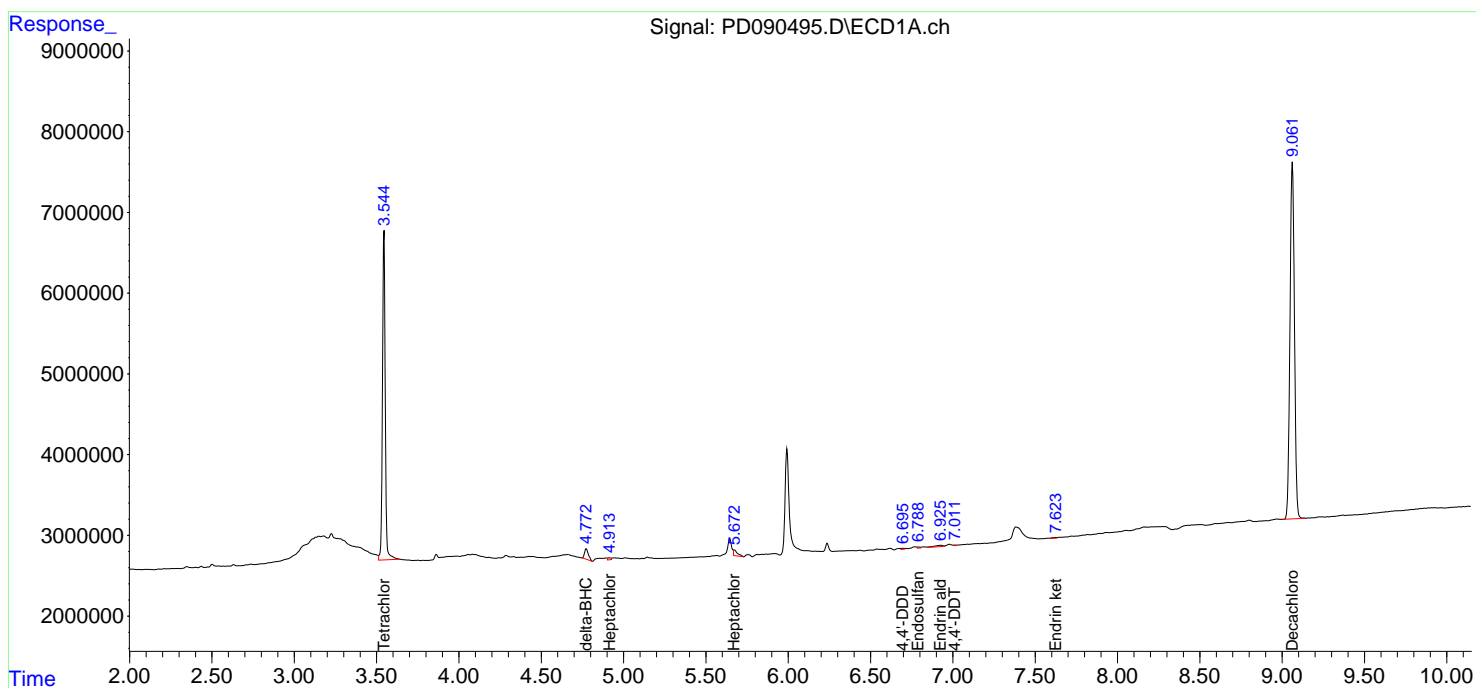
(f)=RT Delta > 1/2 Window (#)=Amounts differ by > 25% (m)=manual int.

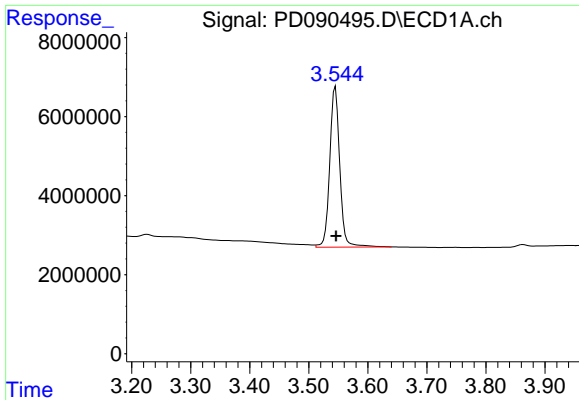
Data Path : Z:\pestpcbsrv\HPCHEM1\ECD_D\Data\PD100325\
 Data File : PD090495.D
 Signal(s) : Signal #1: ECD1A.ch Signal #2: ECD2B.ch
 Acq On : 02 Oct 2025 14:55
 Operator : AR\AJ
 Sample : PB169957BL
 Misc :
 ALS Vial : 5 Sample Multiplier: 1

Instrument :
 ECD_D
 ClientSampleId :
 PB169957BL

Integration File signal 1: autoint1.e
 Integration File signal 2: autoint2.e
 Quant Time: Oct 03 02:44:55 2025
 Quant Method : Z:\pestpcbsrv\HPCHEM1\ECD_D\Method\PD091825.M
 Quant Title : GC Extractables
 QLast Update : Fri Sep 19 05:52:38 2025
 Response via : Initial Calibration
 Integrator: ChemStation

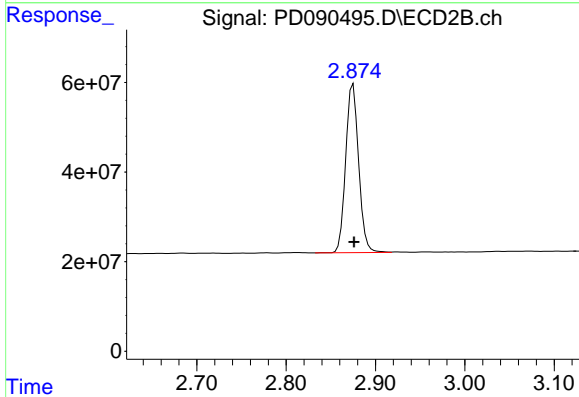
Volume Inj. : 1 µl
 Signal #1 Phase : ZB-MR1 Signal #2 Phase: ZB-MR2
 Signal #1 Info : 30M x 0.32mm x0.5 Signal #2 Info : 30M x 0.32mm x 0.25µm



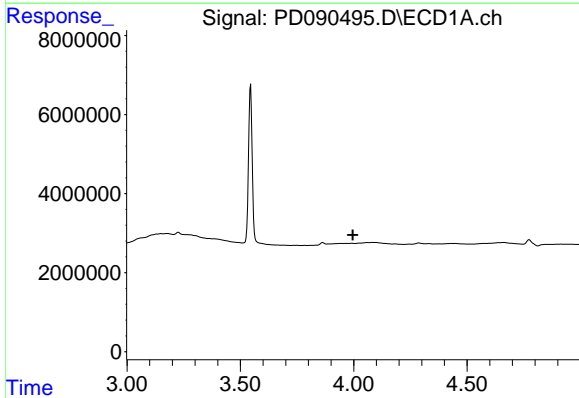


#1 Tetrachloro-m-xylene
 R.T.: 3.545 min
 Delta R.T.: 0.000 min
 Response: 48182098
 Conc: 14.82 ng/ml

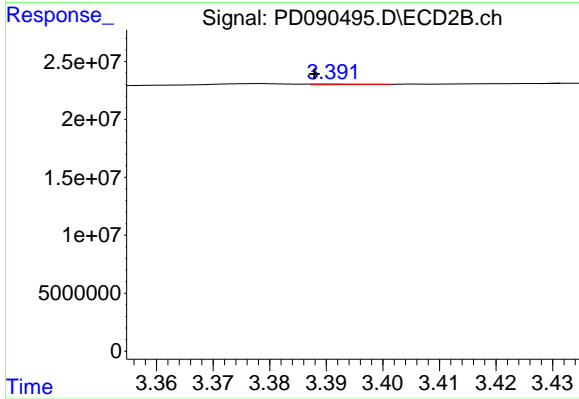
Instrument :
 ECD_D
 ClientSampleId :
 PB169957BL



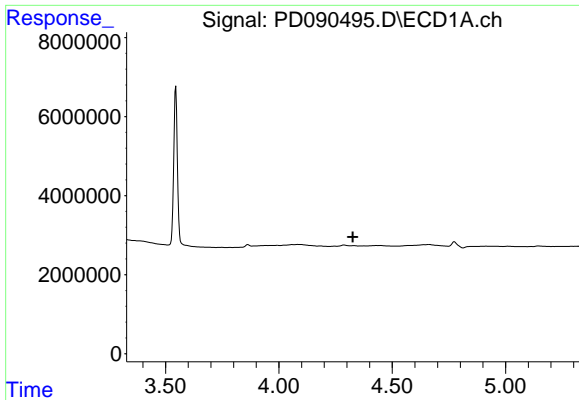
#1 Tetrachloro-m-xylene
 R.T.: 2.875 min
 Delta R.T.: 0.000 min
 Response: 379817081
 Conc: 13.84 ng/ml



#2 alpha-BHC
 R.T.: 0.000 min
 Exp R.T. : 3.995 min
 Response: 0
 Conc: N.D.



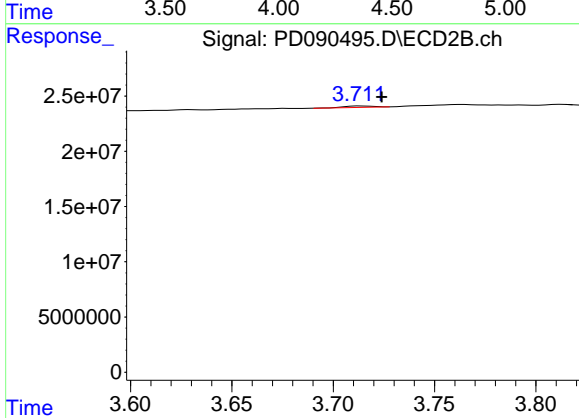
#2 alpha-BHC
 R.T.: 3.392 min
 Delta R.T.: 0.004 min
 Response: 366189
 Conc: 0.01 ng/ml



#3 gamma-BHC (Lindane)

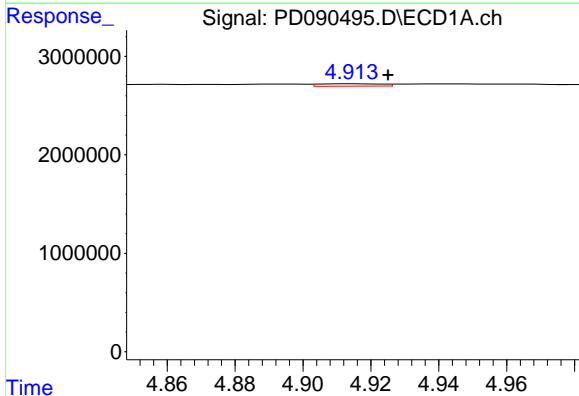
R.T.: 0.000 min
 Exp R.T.: 4.326 min
 Response: 0
 Conc: N.D.

Instrument :
 ECD_D
 ClientSampleId :
 PB169957BL



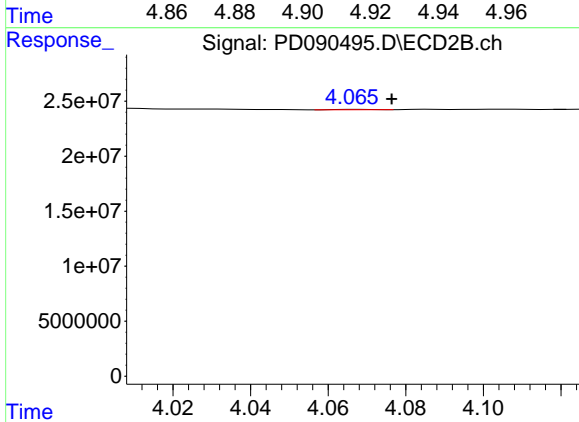
#3 gamma-BHC (Lindane)

R.T.: 3.714 min
 Delta R.T.: -0.010 min
 Response: 1218365
 Conc: 0.03 ng/ml



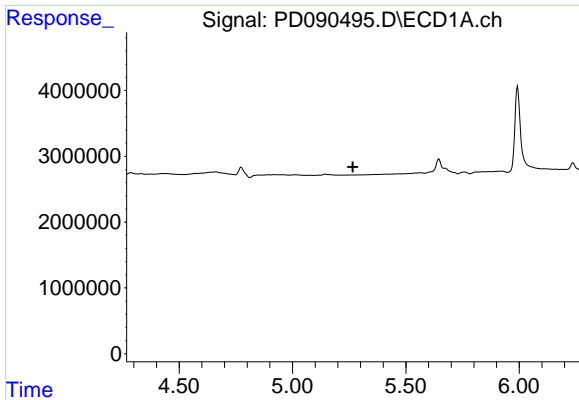
#4 Heptachlor

R.T.: 4.915 min
 Delta R.T.: -0.010 min
 Response: 312853
 Conc: 0.05 ng/ml



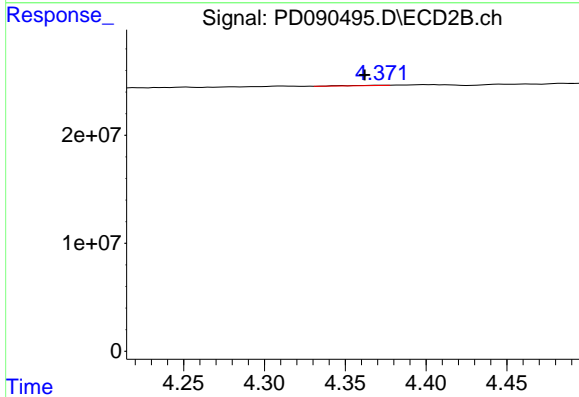
#4 Heptachlor

R.T.: 4.067 min
 Delta R.T.: -0.010 min
 Response: 270780
 Conc: 0.01 ng/ml

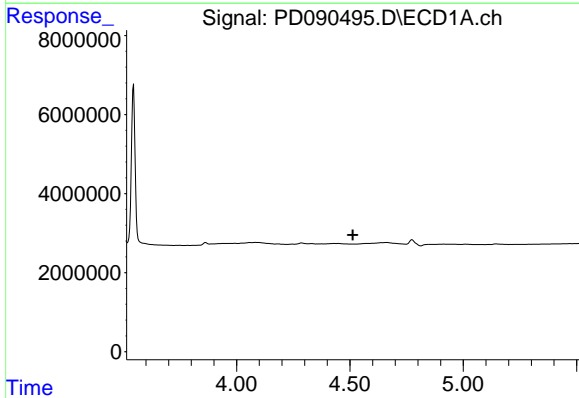


#5 Aldrin
 R.T.: 0.000 min
 Exp R.T.: 5.266 min
 Response: 0
 Conc: N.D.

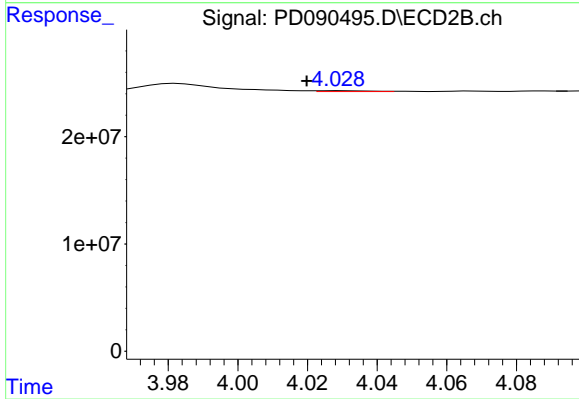
Instrument :
 ECD_D
 ClientSampleId :
 PB169957BL



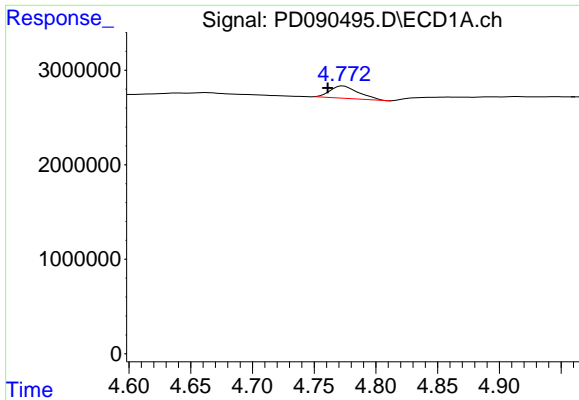
#5 Aldrin
 R.T.: 4.372 min
 Delta R.T.: 0.010 min
 Response: 468891
 Conc: 0.01 ng/ml



#6 beta-BHC
 R.T.: 0.000 min
 Exp R.T.: 4.513 min
 Response: 0
 Conc: N.D.



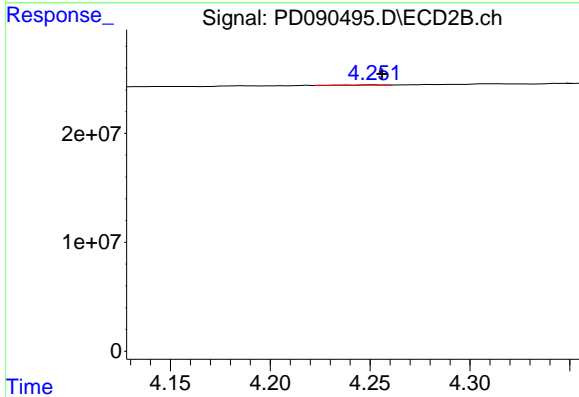
#6 beta-BHC
 R.T.: 4.030 min
 Delta R.T.: 0.010 min
 Response: 844801
 Conc: 0.05 ng/ml



#7 delta-BHC

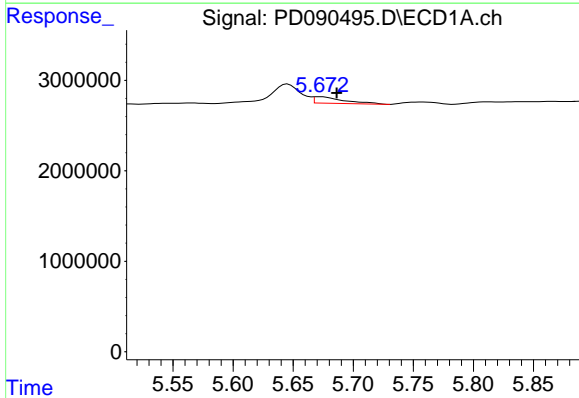
R.T.: 4.774 min
 Delta R.T.: 0.013 min
 Response: 2090210
 Conc: 0.32 ng/ml

Instrument :
 ECD_D
 ClientSampleId :
 PB169957BL



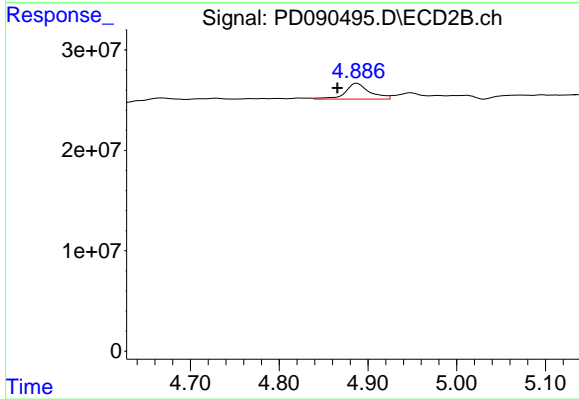
#7 delta-BHC

R.T.: 4.252 min
 Delta R.T.: -0.004 min
 Response: 184470
 Conc: 0.00 ng/ml



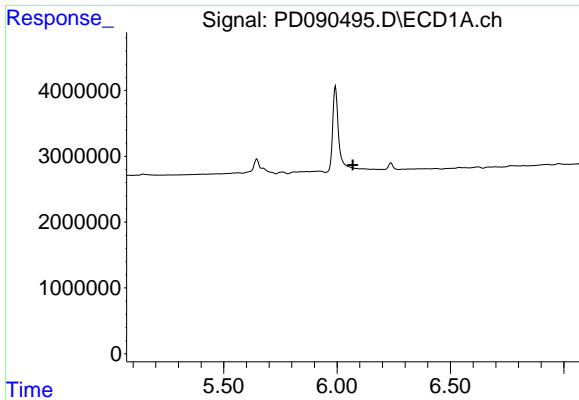
#8 Heptachlor epoxide

R.T.: 5.673 min
 Delta R.T.: -0.013 min
 Response: 1233580
 Conc: 0.22 ng/ml



#8 Heptachlor epoxide

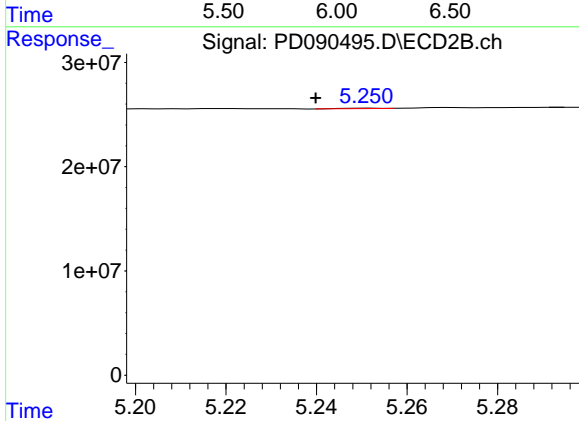
R.T.: 4.888 min
 Delta R.T.: 0.022 min
 Response: 29948395
 Conc: 0.81 ng/ml



#9 Endosulfan I

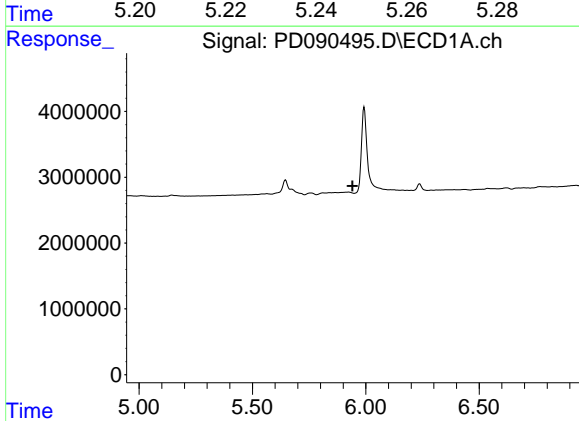
R.T.: 0.000 min
 Exp R.T.: 6.070 min
 Response: 0
 Conc: N.D.

Instrument :
 ECD_D
 ClientSampleId :
 PB169957BL



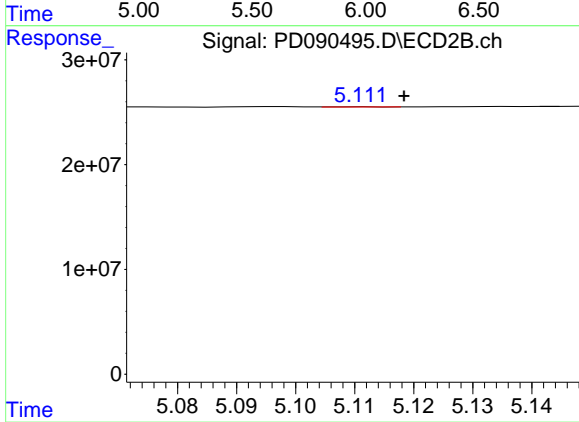
#9 Endosulfan I

R.T.: 5.252 min
 Delta R.T.: 0.012 min
 Response: 221821
 Conc: 0.01 ng/ml



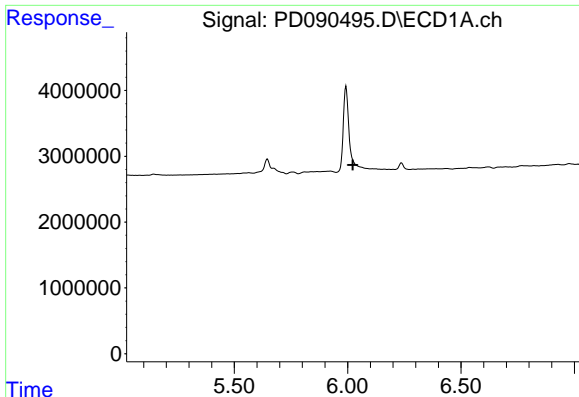
#10 gamma-Chlordane

R.T.: 0.000 min
 Exp R.T.: 5.942 min
 Response: 0
 Conc: N.D.



#10 gamma-Chlordane

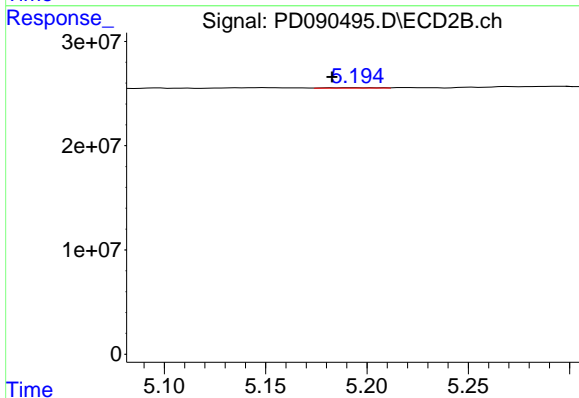
R.T.: 5.112 min
 Delta R.T.: -0.007 min
 Response: 89015
 Conc: 0.00 ng/ml



#11 alpha-Chlordane

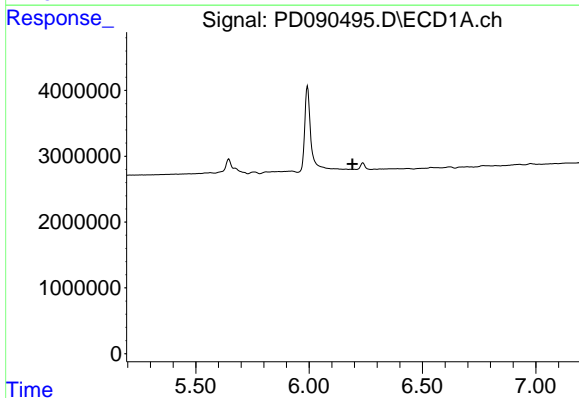
R.T.: 5.993 min
 Delta R.T.: -0.030 min
 Response: -5605232
 Conc: N.D.

Instrument :
 ECD_D
 ClientSampleId :
 PB169957BL



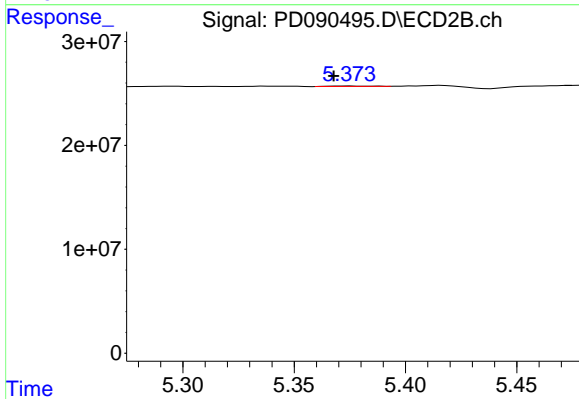
#11 alpha-Chlordane

R.T.: 5.195 min
 Delta R.T.: 0.012 min
 Response: 522648
 Conc: 0.01 ng/ml



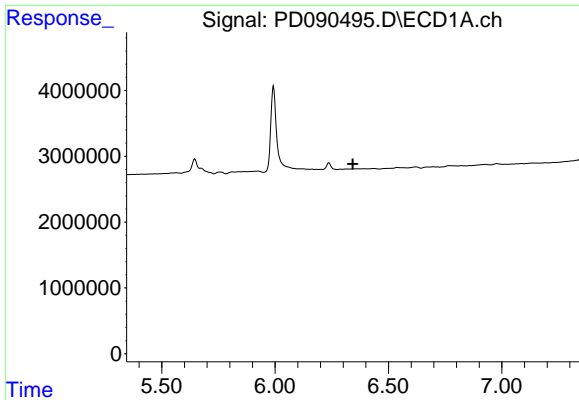
#12 4,4'-DDE

R.T.: 0.000 min
 Exp R.T. : 6.192 min
 Response: 0
 Conc: N.D.



#12 4,4'-DDE

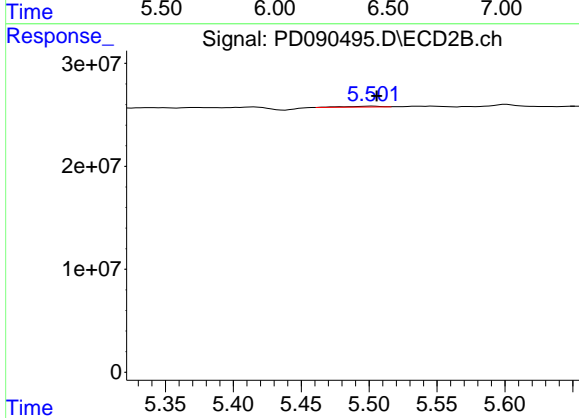
R.T.: 5.374 min
 Delta R.T.: 0.006 min
 Response: 504790
 Conc: 0.01 ng/ml



#13 Dieldrin

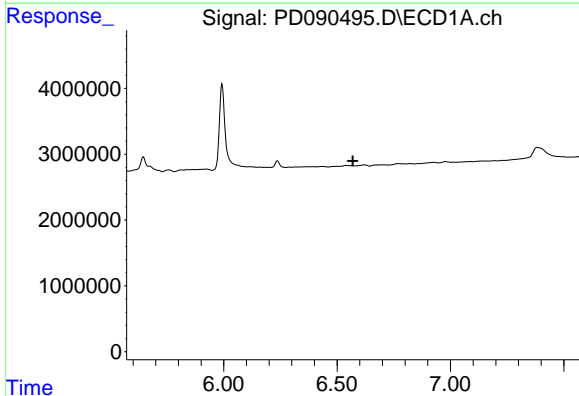
R.T.: 0.000 min
 Exp R.T. : 6.343 min
 Response: 0
 Conc: N.D.

Instrument :
 ECD_D
 ClientSampleId :
 PB169957BL



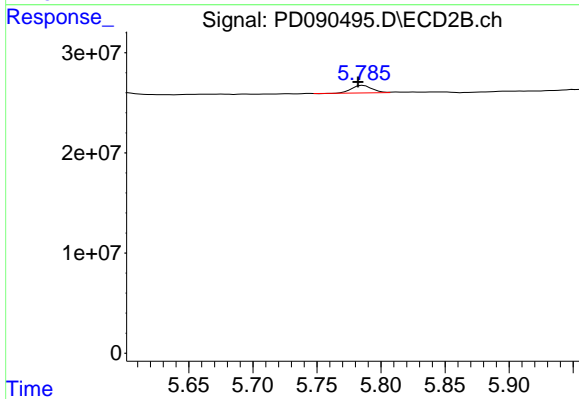
#13 Dieldrin

R.T.: 5.503 min
 Delta R.T.: -0.003 min
 Response: 1659267
 Conc: 0.04 ng/ml



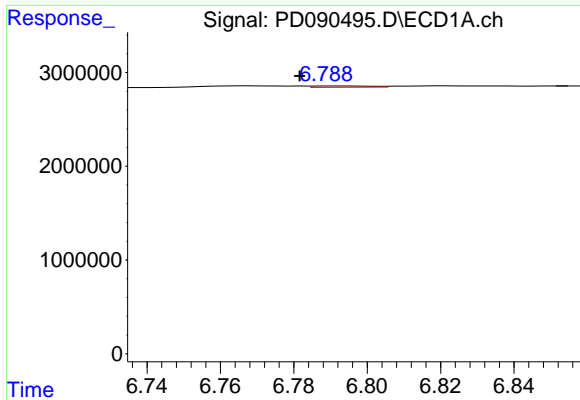
#14 Endrin

R.T.: 0.000 min
 Exp R.T. : 6.569 min
 Response: 0
 Conc: N.D.



#14 Endrin

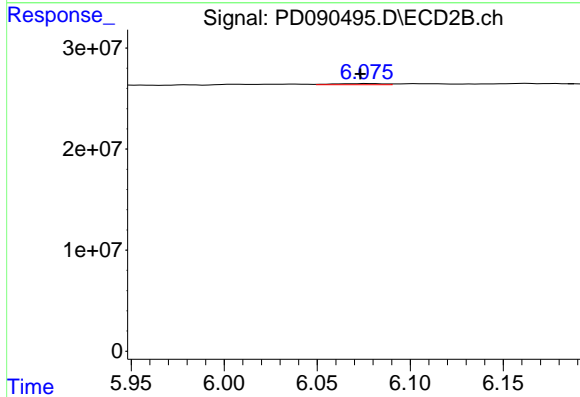
R.T.: 5.786 min
 Delta R.T.: 0.004 min
 Response: 8343576
 Conc: 0.23 ng/ml



#15 Endosulfan II

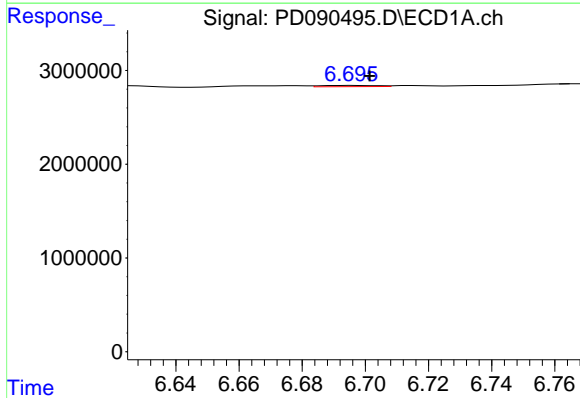
R.T.: 6.790 min
 Delta R.T.: 0.009 min
 Response: 157939
 Conc: 0.03 ng/ml

Instrument :
 ECD_D
 ClientSampleId :
 PB169957BL



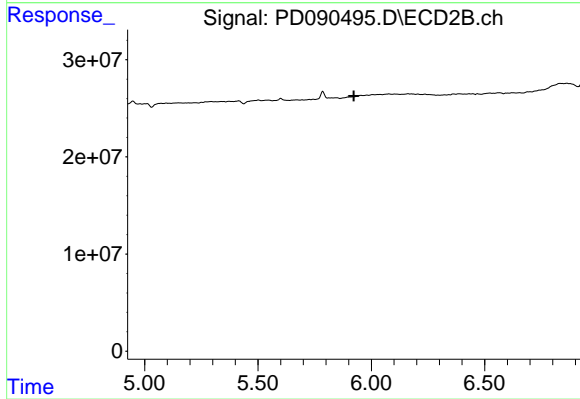
#15 Endosulfan II

R.T.: 6.076 min
 Delta R.T.: 0.003 min
 Response: 2065474
 Conc: 0.06 ng/ml



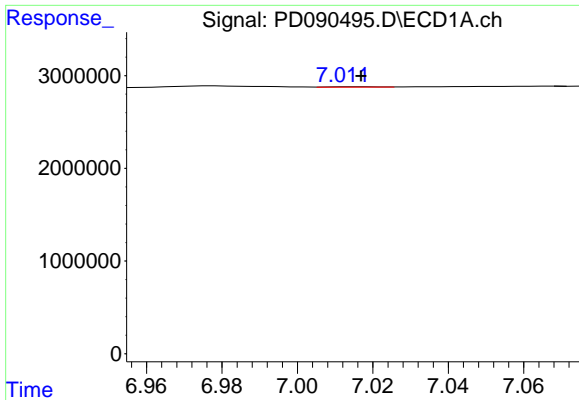
#16 4,4'-DDD

R.T.: 6.696 min
 Delta R.T.: -0.005 min
 Response: 156813
 Conc: 0.04 ng/ml



#16 4,4'-DDD

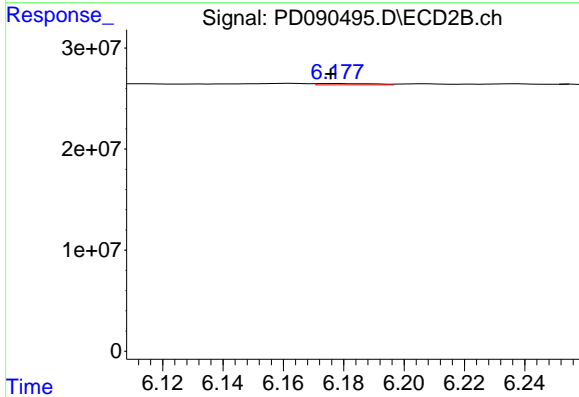
R.T.: 0.000 min
 Exp R.T. : 5.922 min
 Response: 0
 Conc: N.D.



#17 4,4'-DDT

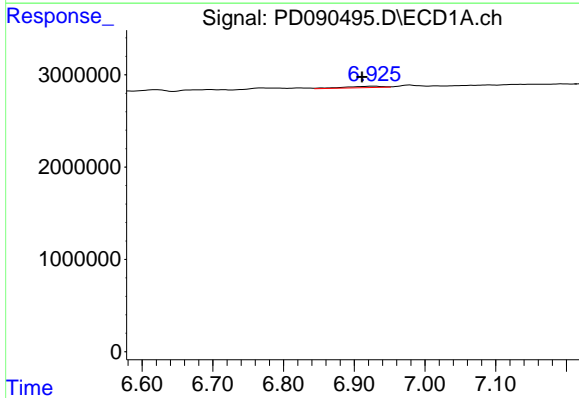
R.T.: 7.015 min
 Delta R.T.: -0.002 min
 Response: 43963
 Conc: 0.01 ng/ml

Instrument :
 ECD_D
 ClientSampleId :
 PB169957BL



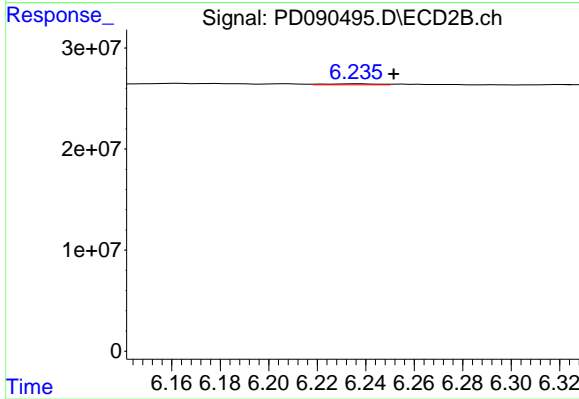
#17 4,4'-DDT

R.T.: 6.178 min
 Delta R.T.: 0.002 min
 Response: 1701547
 Conc: 0.05 ng/ml



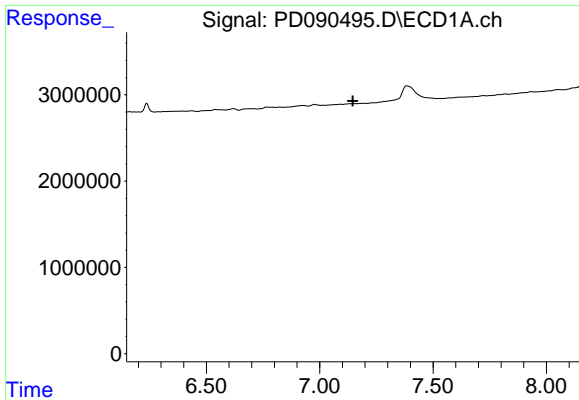
#18 Endrin aldehyde

R.T.: 6.928 min
 Delta R.T.: 0.017 min
 Response: 571849
 Conc: 0.17 ng/ml



#18 Endrin aldehyde

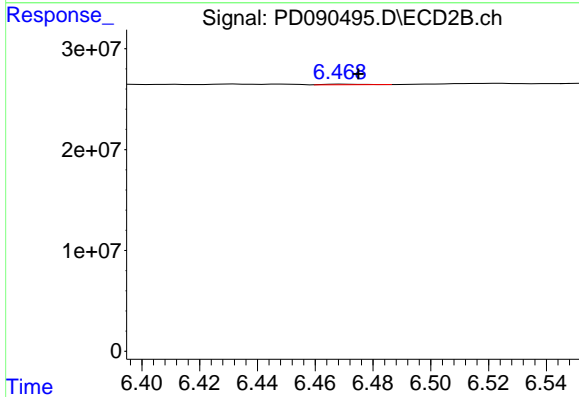
R.T.: 6.236 min
 Delta R.T.: -0.015 min
 Response: 1580179
 Conc: 0.07 ng/ml



#19 Endosulfan Sulfate

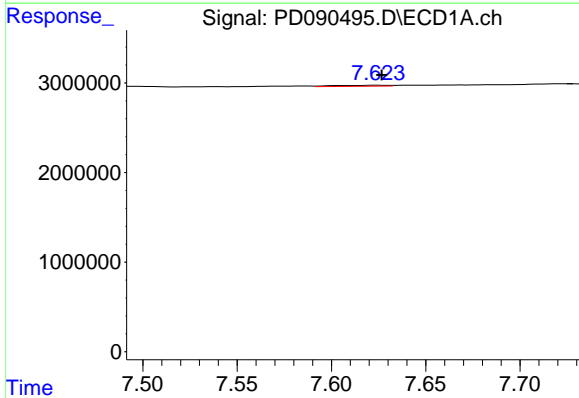
R.T.: 0.000 min
 Exp R.T.: 7.146 min
 Response: 0
 Conc: N.D.

Instrument :
 ECD_D
 ClientSampleId :
 PB169957BL



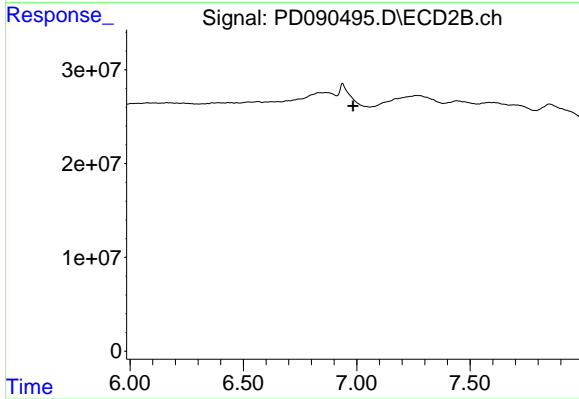
#19 Endosulfan Sulfate

R.T.: 6.469 min
 Delta R.T.: -0.006 min
 Response: 484001
 Conc: 0.01 ng/ml



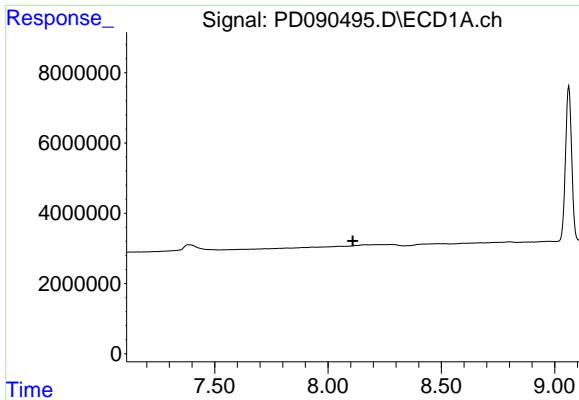
#21 Endrin ketone

R.T.: 7.625 min
 Delta R.T.: -0.002 min
 Response: 208711
 Conc: 0.04 ng/ml



#21 Endrin ketone

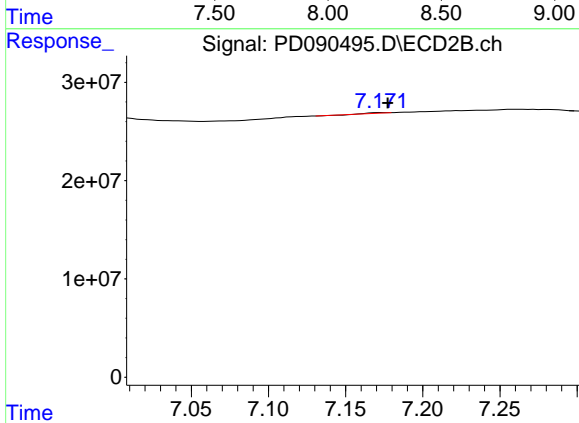
R.T.: 0.000 min
 Exp R.T.: 6.984 min
 Response: 0
 Conc: N.D.



#22 Mirex

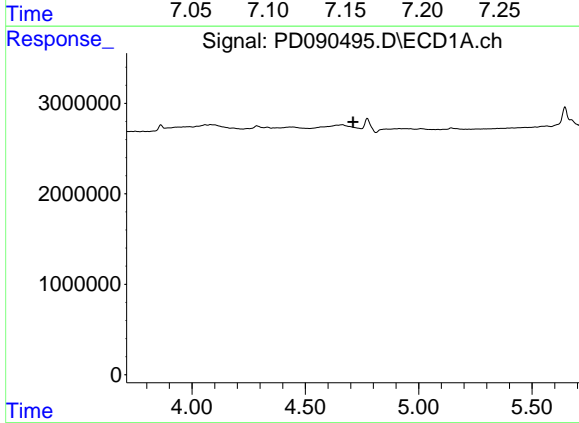
R.T.: 0.000 min
 Exp R.T.: 8.109 min
 Response: 0
 Conc: N.D.

Instrument :
 ECD_D
 ClientSampleId :
 PB169957BL



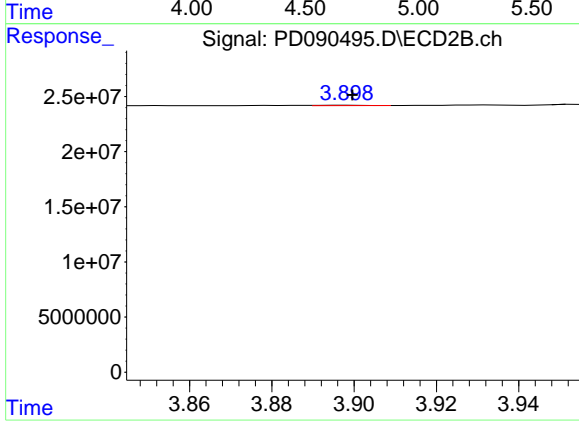
#22 Mirex

R.T.: 7.173 min
 Delta R.T.: -0.004 min
 Response: 221559
 Conc: 0.01 ng/ml



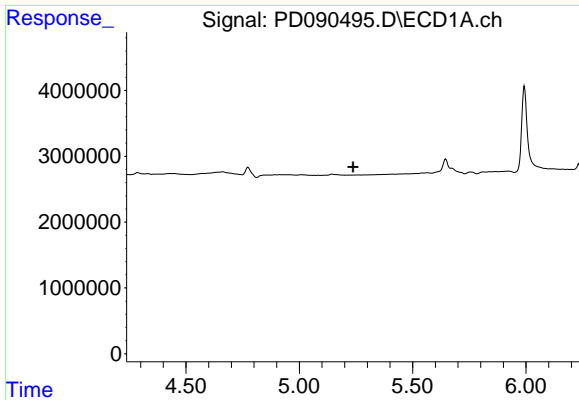
#23 Chlordane-1

R.T.: 0.000 min
 Exp R.T.: 4.710 min
 Response: 0
 Conc: N.D.



#23 Chlordane-1

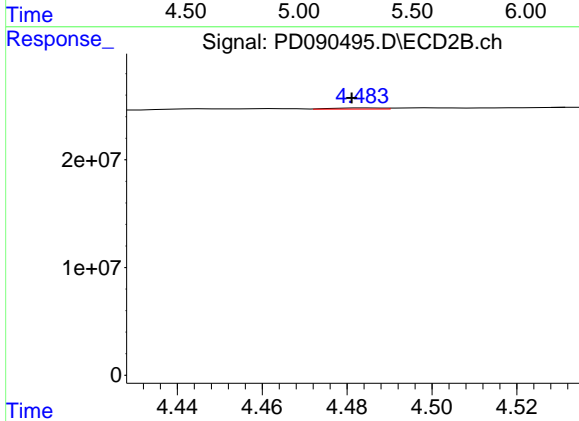
R.T.: 3.899 min
 Delta R.T.: 0.000 min
 Response: 257164
 Conc: 0.21 ng/ml



#24 Chlordane-2

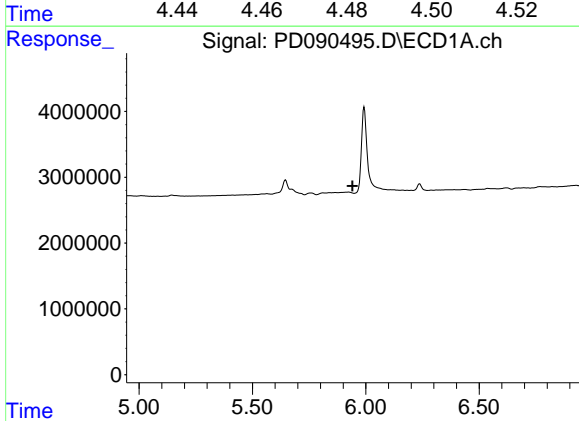
R.T.: 0.000 min
 Exp R.T.: 5.237 min
 Response: 0
 Conc: N.D.

Instrument :
 ECD_D
 ClientSampleId :
 PB169957BL



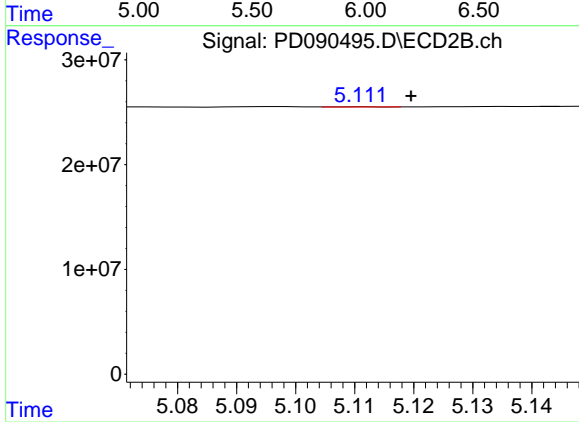
#24 Chlordane-2

R.T.: 4.485 min
 Delta R.T.: 0.004 min
 Response: 822409
 Conc: 0.66 ng/ml



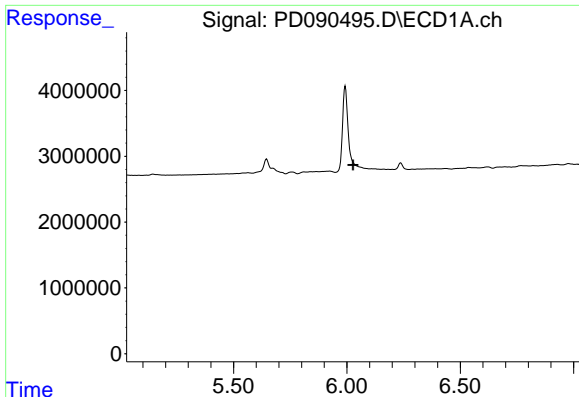
#25 Chlordane-3

R.T.: 0.000 min
 Exp R.T.: 5.942 min
 Response: 0
 Conc: N.D.



#25 Chlordane-3

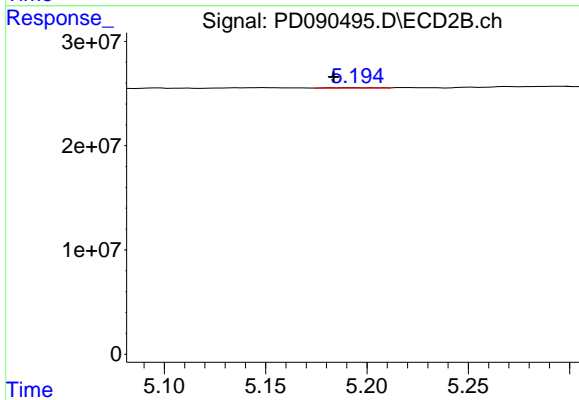
R.T.: 5.112 min
 Delta R.T.: -0.008 min
 Response: 89015
 Conc: 0.02 ng/ml



#26 Chlordane-4

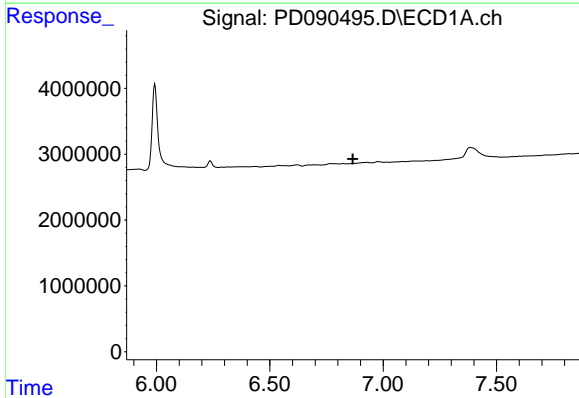
R.T.: 0.000 min
 Exp R.T. : 6.027 min
 Response: 0
 Conc: N.D.

Instrument :
 ECD_D
 ClientSampleId :
 PB169957BL



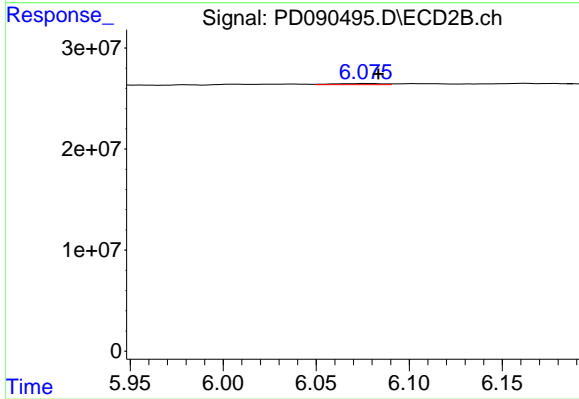
#26 Chlordane-4

R.T.: 5.195 min
 Delta R.T.: 0.012 min
 Response: 522648
 Conc: 0.16 ng/ml



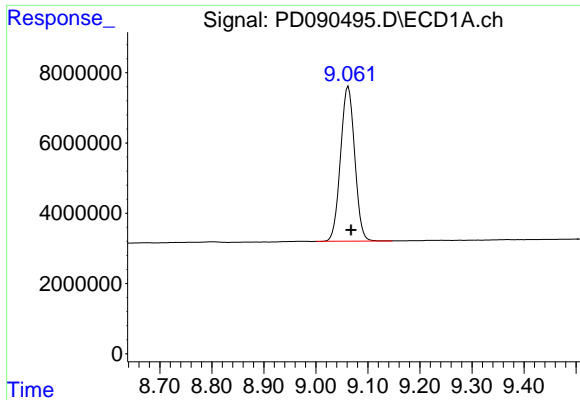
#27 Chlordane-5

R.T.: 0.000 min
 Exp R.T. : 6.867 min
 Response: 0
 Conc: N.D.



#27 Chlordane-5

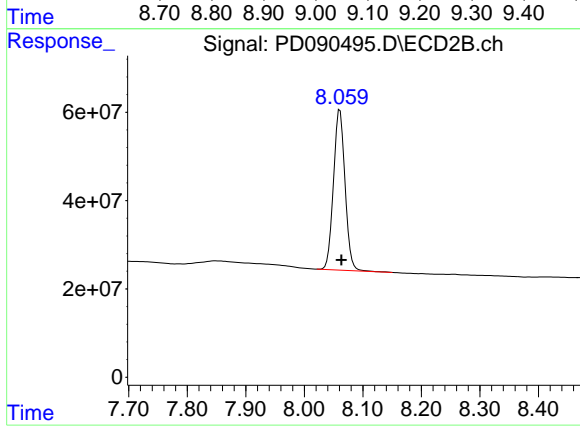
R.T.: 6.076 min
 Delta R.T.: -0.007 min
 Response: 2065474
 Conc: 1.36 ng/ml



#28 Decachlorobiphenyl

R.T.: 9.062 min
Delta R.T.: -0.005 min
Response: 83330027
Conc: 17.27 ng/ml

Instrument :
ECD_D
ClientSampleId :
PB169957BL



#28 Decachlorobiphenyl

R.T.: 8.061 min
Delta R.T.: -0.003 min
Response: 498719715
Conc: 15.39 ng/ml