

Data Path : Z:\pestpcbsrv\HPCHEM1\ECD\_D\Data\PD100325\  
 Data File : PD090496.D  
 Signal(s) : Signal #1: ECD1A.ch Signal #2: ECD2B.ch  
 Acq On : 02 Oct 2025 15:09  
 Operator : AR\AJ  
 Sample : PB169957BS  
 Misc :  
 ALS Vial : 6 Sample Multiplier: 1

Instrument :  
 ECD\_D  
 ClientSampleId :  
 PB169957BS

Integration File signal 1: autoint1.e  
 Integration File signal 2: autoint2.e  
 Quant Time: Oct 03 02:45:04 2025  
 Quant Method : Z:\pestpcbsrv\HPCHEM1\ECD\_D\Method\PD091825.M  
 Quant Title : GC Extractables  
 QLast Update : Fri Sep 19 05:52:38 2025  
 Response via : Initial Calibration  
 Integrator: ChemStation

Volume Inj. : 1 µl  
 Signal #1 Phase : ZB-MR1 Signal #2 Phase: ZB-MR2  
 Signal #1 Info : 30M x 0.32mm x0.5 Signal #2 Info : 30M x 0.32mm x 0.25µm

	Compound	RT#1	RT#2	Resp#1	Resp#2	ng/ml	ng/ml
-----							
System Monitoring Compounds							
1)	SA Tetrachlo...	3.545	2.875	50284472	401.5E6	15.470	14.625
28)	SA Decachlor...	9.061	8.059	88403644	528.8E6	18.322	16.315
Target Compounds							
2)	A alpha-BHC	3.994	3.386	341.9E6	1886.8E6	48.946	43.095
3)	MA gamma-BHC...	4.324	3.723	321.7E6	1757.8E6	48.616	43.152
4)	MA Heptachlor	4.922	4.074	327.6E6	1783.0E6	49.540	43.791
5)	MB Aldrin	5.263	4.360	313.5E6	1737.2E6	49.365	43.501
6)	B beta-BHC	4.511	4.018	120.4E6	743.9E6	46.650	42.912
7)	B delta-BHC	4.759	4.254	-60521986	1795.0E6	N.D.	43.468
8)	B Heptachlo...	5.683	4.864	284.9E6	1642.3E6	49.844	44.548
9)	A Endosulfan I	6.067	5.237	241.3E6	1513.8E6	44.677	43.744
10)	B gamma-Chl...	5.939	5.116	282.2E6	1714.9E6	49.398	43.651
11)	B alpha-Chl...	6.020	5.181	273.5E6	1643.7E6	47.484	43.640
12)	B 4,4'-DDE	6.189	5.365	260.1E6	1678.7E6	49.953	43.854
13)	MA Dieldrin	6.339	5.503	293.4E6	1724.6E6	50.888	44.283
14)	MA Endrin	6.567	5.779	250.2E6	1621.3E6	51.122	45.246
15)	B Endosulfa...	6.779	6.071	251.6E6	1505.8E6	51.582	44.615
16)	A 4,4'-DDD	6.698	5.919	209.3E6	1434.1E6	51.073	44.223
17)	MA 4,4'-DDT	7.014	6.173	231.2E6	1515.3E6	51.919	44.076
18)	B Endrin al...	6.907	6.249	187.3E6	1136.6E6	54.601	48.270
19)	B Endosulfa...	7.142	6.472	236.3E6	1491.5E6	51.372	45.624
20)	A Methoxychlor	7.486	6.743	123.4E6	778.9E6	52.347	44.763
21)	B Endrin ke...	7.623	6.981	257.7E6	1525.2E6	52.078	42.246
22)	Mirex	8.105	7.173	182.9E6	1180.3E6	49.370	42.754
23)	Chlordane-1	0.000	3.895	0	877035	N.D.	0.729 #
24)	Chlordane-2	5.263f	4.498	313.5E6	11803701	1460.728	9.439 #
25)	Chlordane-3	5.939	5.116	282.2E6	1714.9E6	337.104	452.407 #
26)	Chlordane-4	6.020	5.181	273.5E6	1643.7E6	268.044	504.822 #
27)	Chlordane-5	0.000	6.071	0	1505.8E6	N.D.	992.219 #

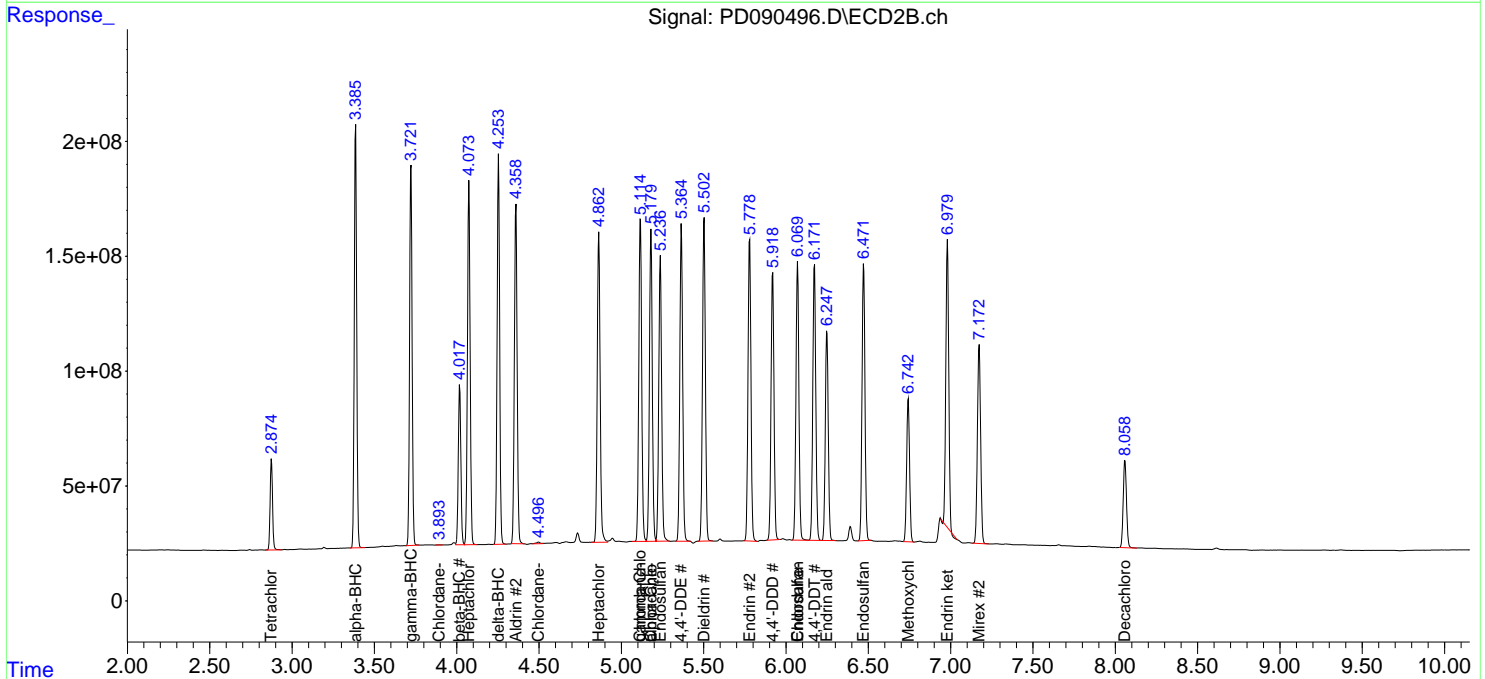
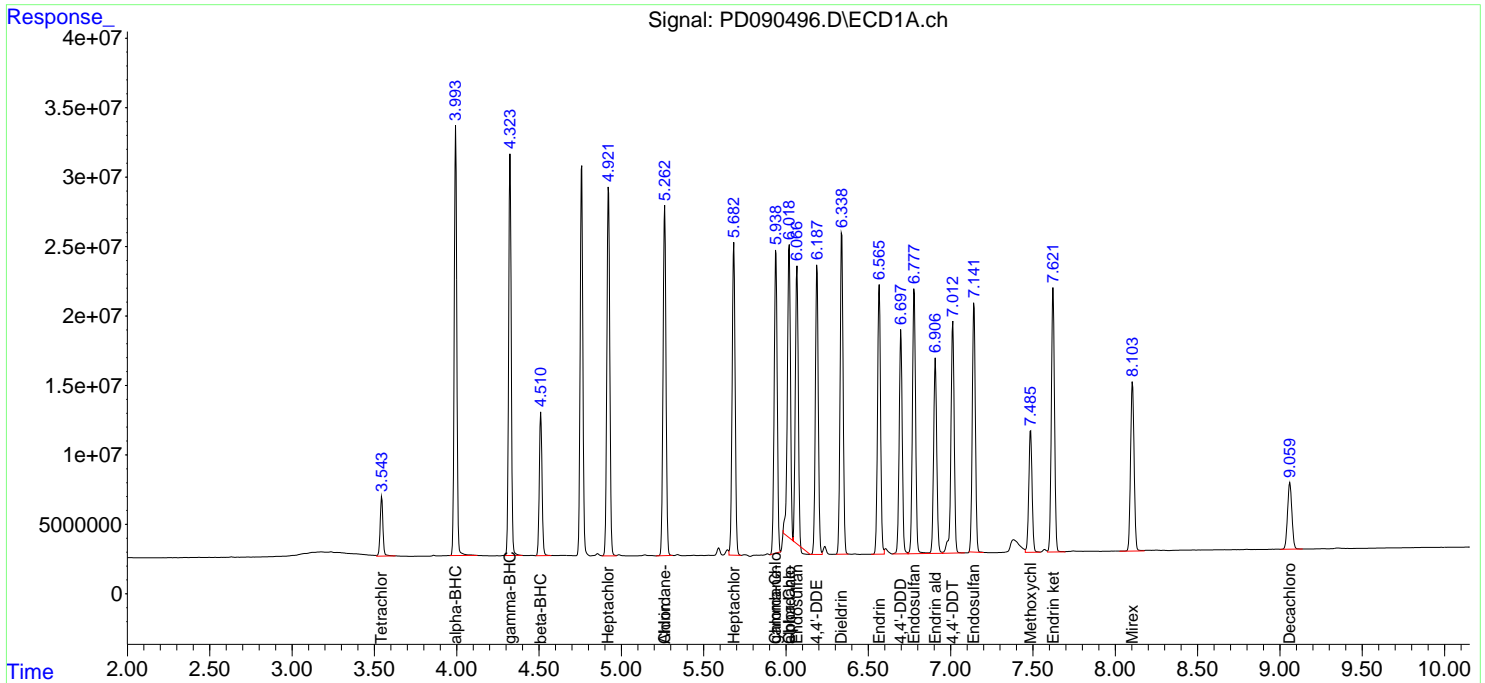
(f)=RT Delta > 1/2 Window (#)=Amounts differ by > 25% (m)=manual int.

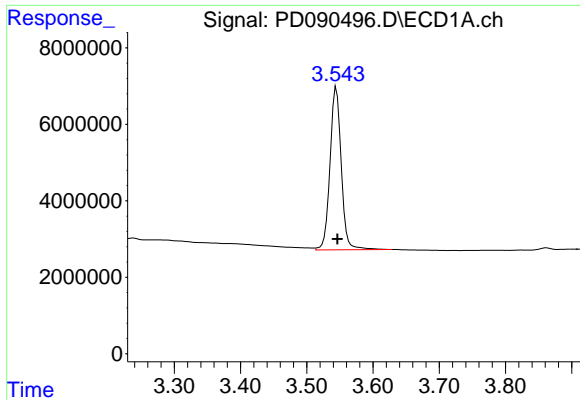
Data Path : Z:\pestpcbsrv\HPCHEM1\ECD\_D\Data\PD100325\  
 Data File : PD090496.D  
 Signal(s) : Signal #1: ECD1A.ch Signal #2: ECD2B.ch  
 Acq On : 02 Oct 2025 15:09  
 Operator : AR\AJ  
 Sample : PB169957BS  
 Misc :  
 ALS Vial : 6 Sample Multiplier: 1

Instrument :  
 ECD\_D  
 ClientSampleId :  
 PB169957BS

Integration File signal 1: autoint1.e  
 Integration File signal 2: autoint2.e  
 Quant Time: Oct 03 02:45:04 2025  
 Quant Method : Z:\pestpcbsrv\HPCHEM1\ECD\_D\Method\PD091825.M  
 Quant Title : GC Extractables  
 QLast Update : Fri Sep 19 05:52:38 2025  
 Response via : Initial Calibration  
 Integrator: ChemStation

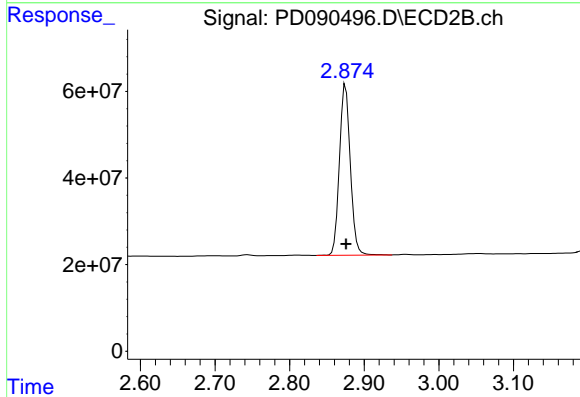
Volume Inj. : 1 µl  
 Signal #1 Phase : ZB-MR1 Signal #2 Phase: ZB-MR2  
 Signal #1 Info : 30M x 0.32mm x0.5 Signal #2 Info : 30M x 0.32mm x 0.25µm



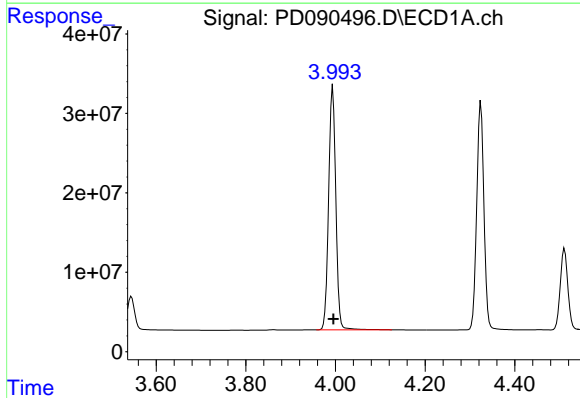


#1 Tetrachloro-m-xylene  
 R.T.: 3.545 min  
 Delta R.T.: -0.001 min  
 Response: 50284472  
 Conc: 15.47 ng/ml

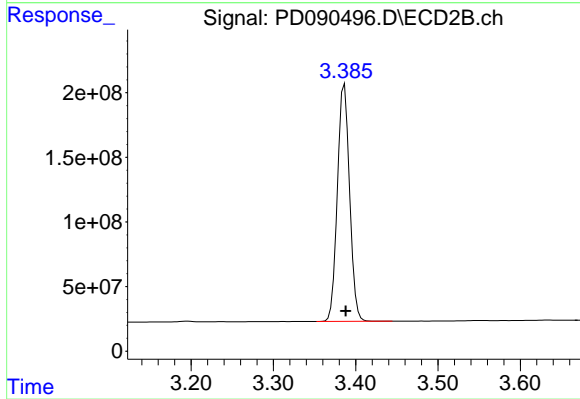
Instrument :  
 ECD\_D  
 ClientSampleId :  
 PB169957BS



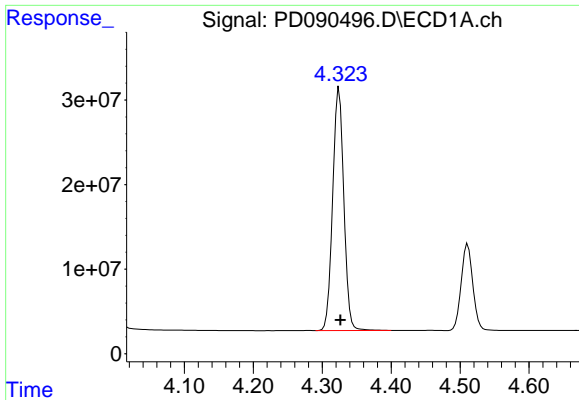
#1 Tetrachloro-m-xylene  
 R.T.: 2.875 min  
 Delta R.T.: 0.000 min  
 Response: 401456648  
 Conc: 14.63 ng/ml



#2 alpha-BHC  
 R.T.: 3.994 min  
 Delta R.T.: -0.001 min  
 Response: 341862445  
 Conc: 48.95 ng/ml



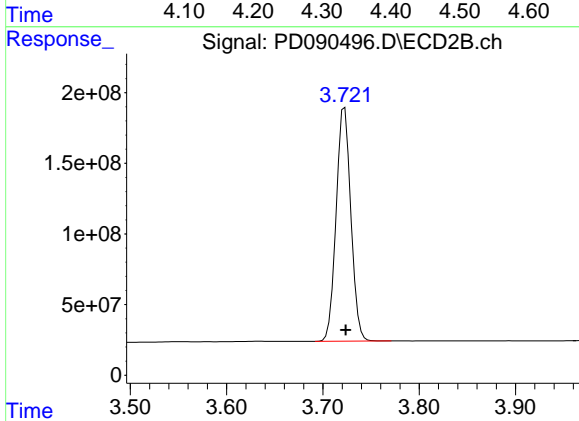
#2 alpha-BHC  
 R.T.: 3.386 min  
 Delta R.T.: -0.002 min  
 Response: 1886842197  
 Conc: 43.10 ng/ml



#3 gamma-BHC (Lindane)

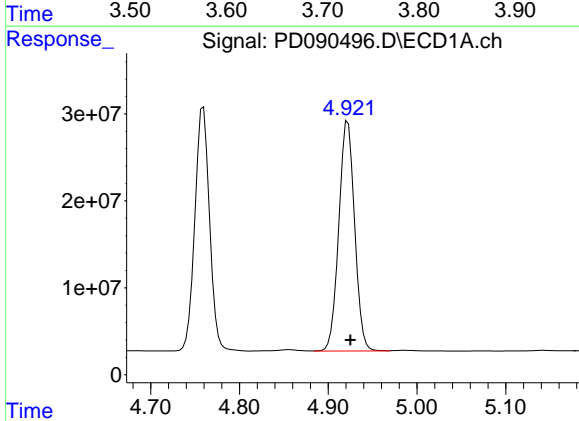
R.T.: 4.324 min  
 Delta R.T.: -0.002 min  
 Response: 321685637  
 Conc: 48.62 ng/ml

Instrument :  
 ECD\_D  
 ClientSampleId :  
 PB169957BS



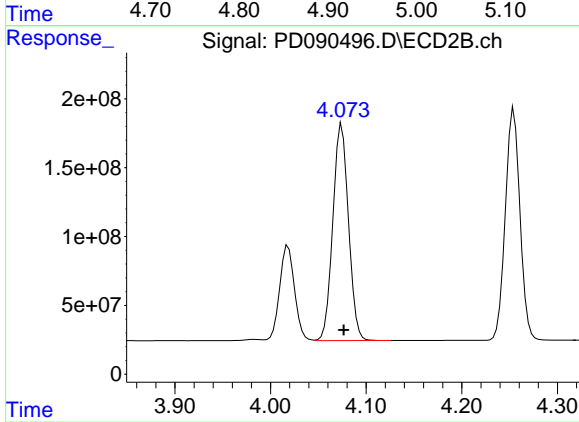
#3 gamma-BHC (Lindane)

R.T.: 3.723 min  
 Delta R.T.: -0.001 min  
 Response: 1757838223  
 Conc: 43.15 ng/ml



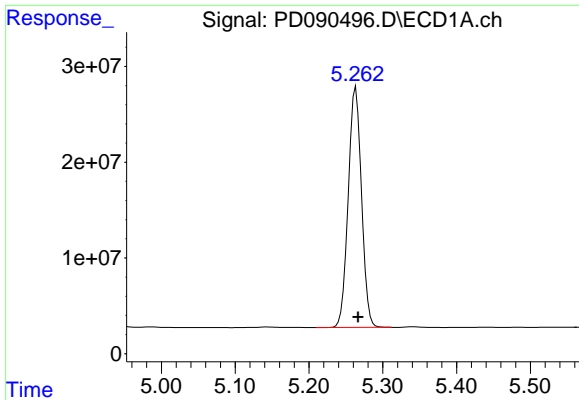
#4 Heptachlor

R.T.: 4.922 min  
 Delta R.T.: -0.003 min  
 Response: 327584648  
 Conc: 49.54 ng/ml



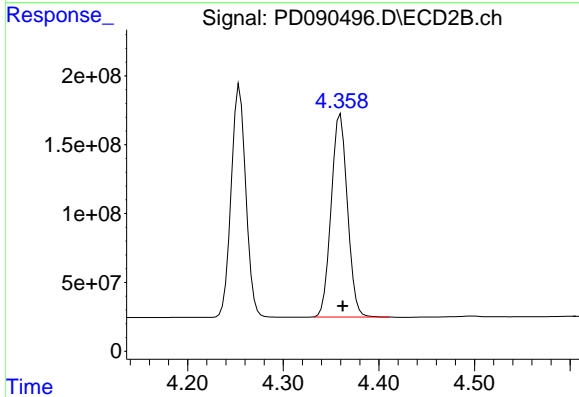
#4 Heptachlor

R.T.: 4.074 min  
 Delta R.T.: -0.002 min  
 Response: 1783037818  
 Conc: 43.79 ng/ml

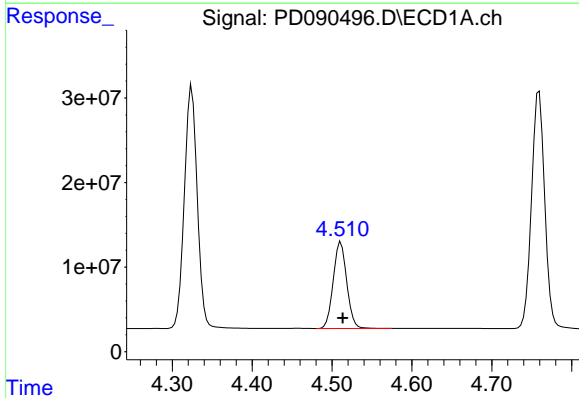


#5 Aldrin  
 R.T.: 5.263 min  
 Delta R.T.: -0.003 min  
 Response: 313465671  
 Conc: 49.37 ng/ml

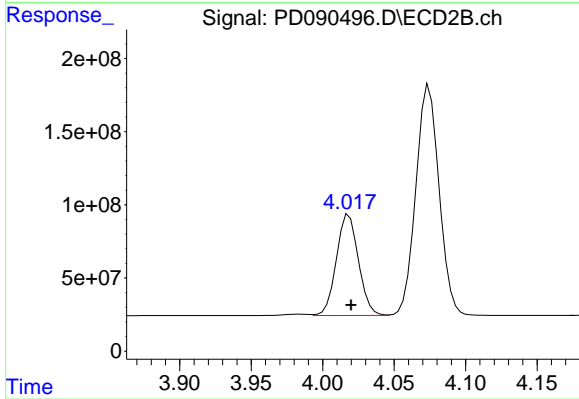
Instrument :  
 ECD\_D  
 ClientSampleId :  
 PB169957BS



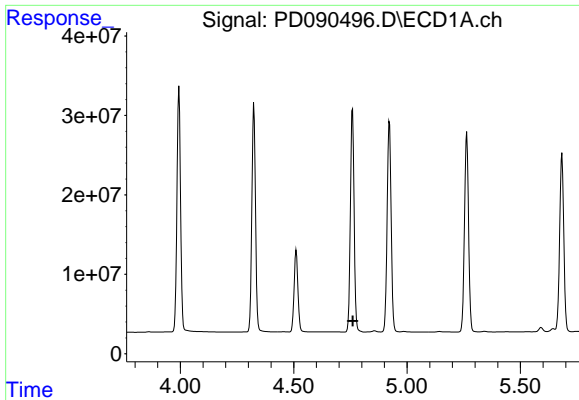
#5 Aldrin  
 R.T.: 4.360 min  
 Delta R.T.: -0.002 min  
 Response: 1737227807  
 Conc: 43.50 ng/ml



#6 beta-BHC  
 R.T.: 4.511 min  
 Delta R.T.: -0.002 min  
 Response: 120354279  
 Conc: 46.65 ng/ml



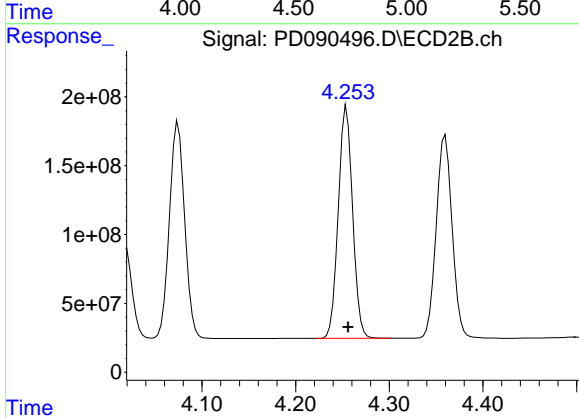
#6 beta-BHC  
 R.T.: 4.018 min  
 Delta R.T.: -0.001 min  
 Response: 743896956  
 Conc: 42.91 ng/ml



#7 delta-BHC

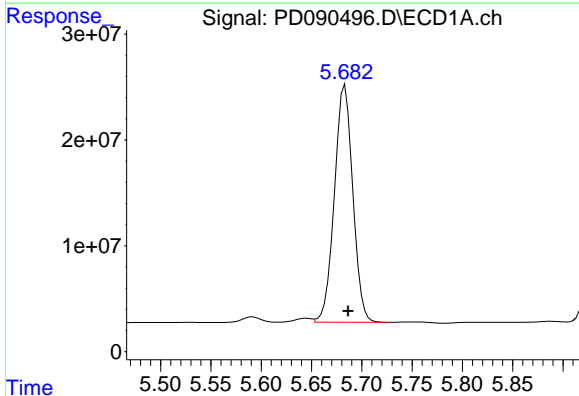
R.T.: 4.759 min  
 Delta R.T.: -0.002 min  
 Response: -60521986  
 Conc: N.D.

Instrument :  
 ECD\_D  
 ClientSampleId :  
 PB169957BS



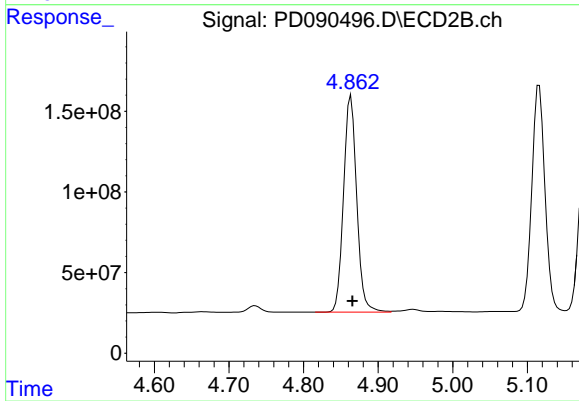
#7 delta-BHC

R.T.: 4.254 min  
 Delta R.T.: -0.002 min  
 Response: 1795007014  
 Conc: 43.47 ng/ml



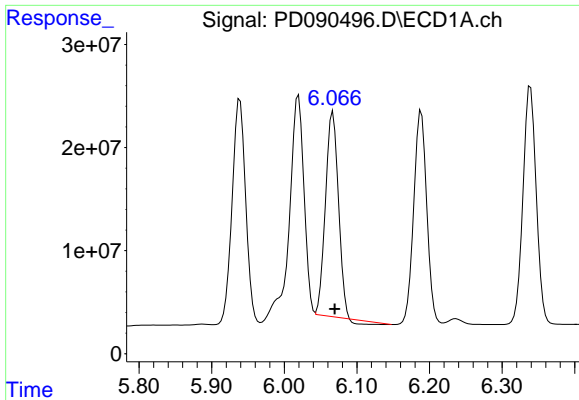
#8 Heptachlor epoxide

R.T.: 5.683 min  
 Delta R.T.: -0.003 min  
 Response: 284854263  
 Conc: 49.84 ng/ml



#8 Heptachlor epoxide

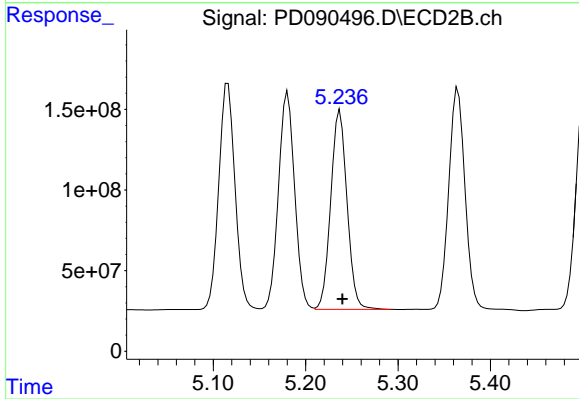
R.T.: 4.864 min  
 Delta R.T.: -0.002 min  
 Response: 1642259804  
 Conc: 44.55 ng/ml



#9 Endosulfan I

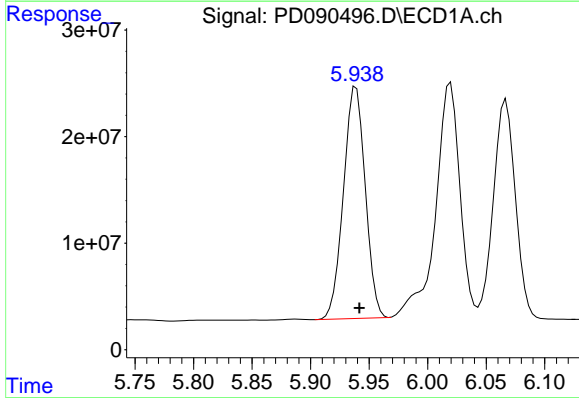
R.T.: 6.067 min  
 Delta R.T.: -0.003 min  
 Response: 241321274  
 Conc: 44.68 ng/ml

Instrument :  
 ECD\_D  
 ClientSampleId :  
 PB169957BS



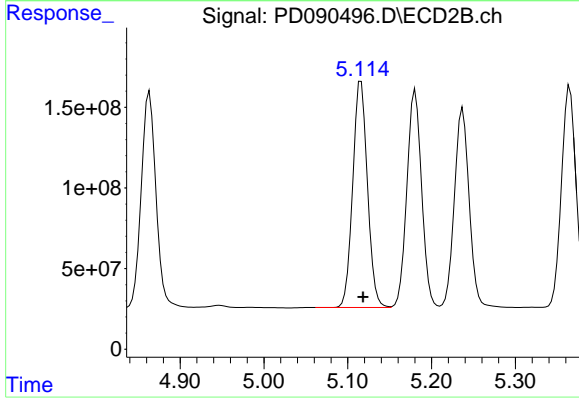
#9 Endosulfan I

R.T.: 5.237 min  
 Delta R.T.: -0.003 min  
 Response: 1513776493  
 Conc: 43.74 ng/ml



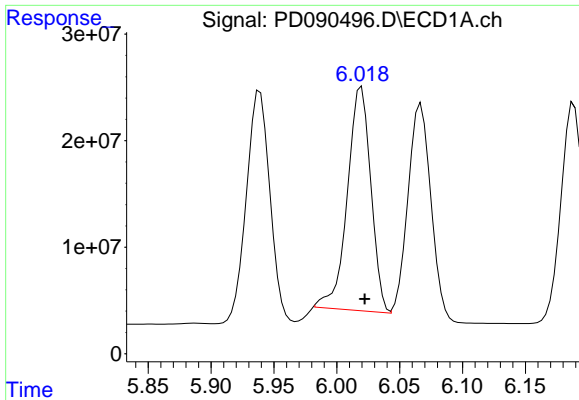
#10 gamma-Chlordane

R.T.: 5.939 min  
 Delta R.T.: -0.003 min  
 Response: 282160080  
 Conc: 49.40 ng/ml



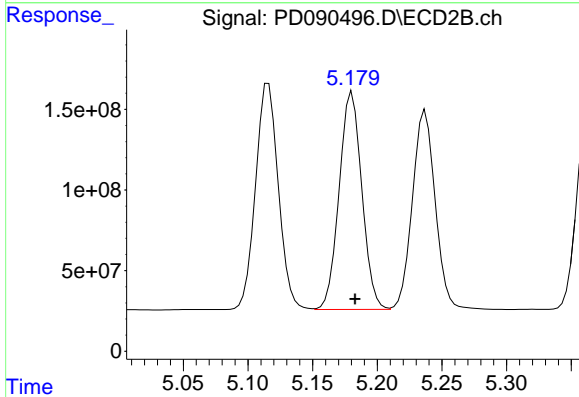
#10 gamma-Chlordane

R.T.: 5.116 min  
 Delta R.T.: -0.003 min  
 Response: 1714882248  
 Conc: 43.65 ng/ml

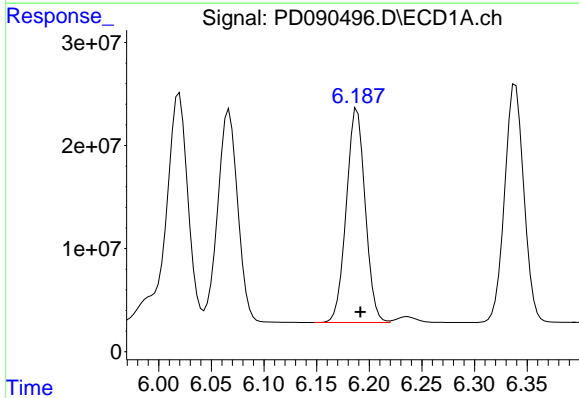


#11 alpha-Chlordane  
 R.T.: 6.020 min  
 Delta R.T.: -0.003 min  
 Response: 273549551  
 Conc: 47.48 ng/ml

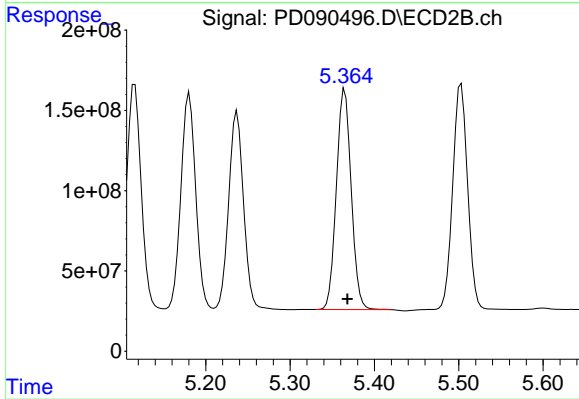
Instrument :  
 ECD\_D  
 ClientSampleId :  
 PB169957BS



#11 alpha-Chlordane  
 R.T.: 5.181 min  
 Delta R.T.: -0.002 min  
 Response: 1643723109  
 Conc: 43.64 ng/ml

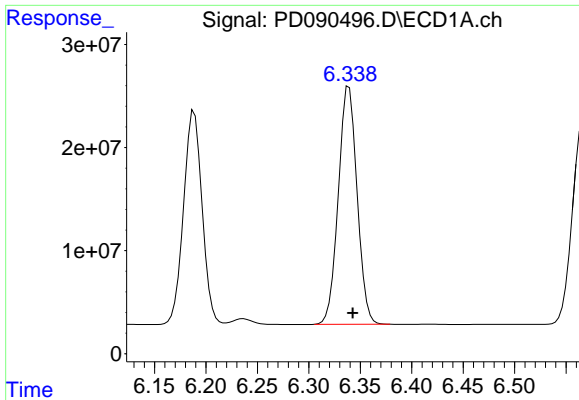


#12 4,4'-DDE  
 R.T.: 6.189 min  
 Delta R.T.: -0.003 min  
 Response: 260131227  
 Conc: 49.95 ng/ml



#12 4,4'-DDE  
 R.T.: 5.365 min  
 Delta R.T.: -0.003 min  
 Response: 1678681328  
 Conc: 43.85 ng/ml

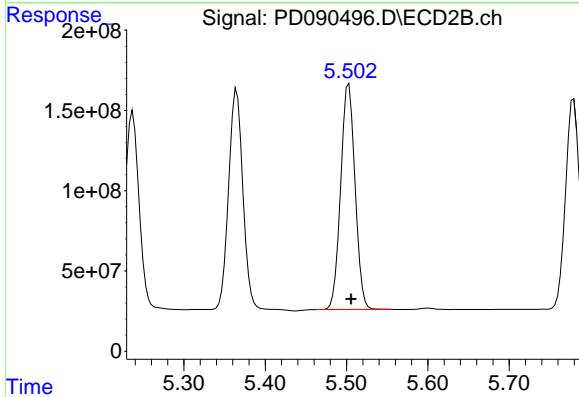




#13 Dieldrin

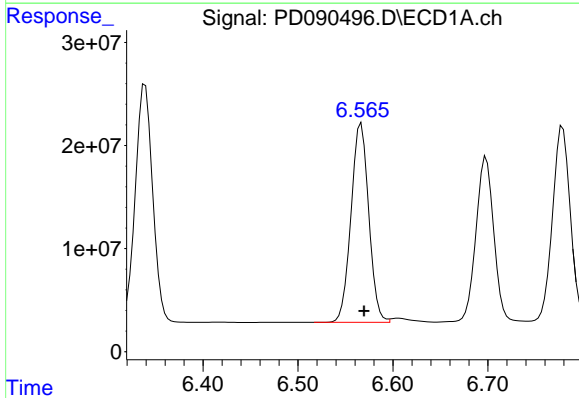
R.T.: 6.339 min  
 Delta R.T.: -0.004 min  
 Response: 293353718  
 Conc: 50.89 ng/ml

Instrument :  
 ECD\_D  
 ClientSampleId :  
 PB169957BS



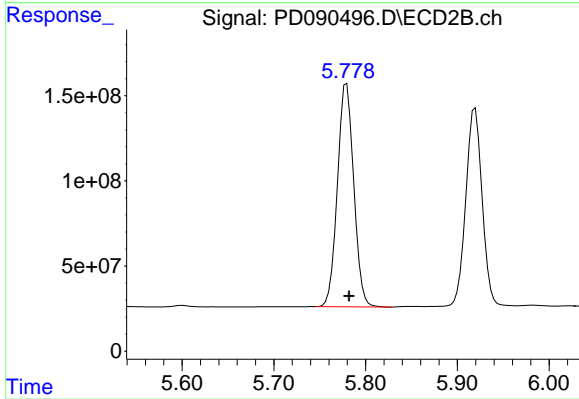
#13 Dieldrin

R.T.: 5.503 min  
 Delta R.T.: -0.003 min  
 Response: 1724648651  
 Conc: 44.28 ng/ml



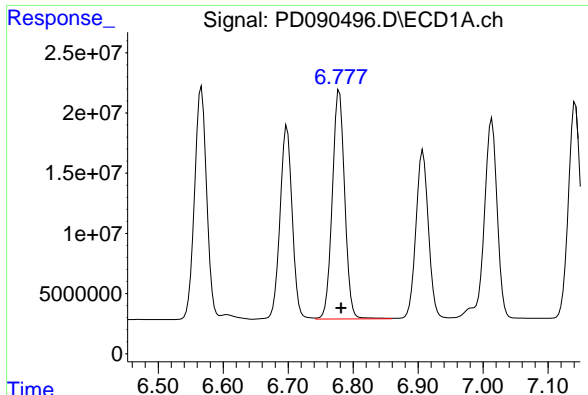
#14 Endrin

R.T.: 6.567 min  
 Delta R.T.: -0.003 min  
 Response: 250189640  
 Conc: 51.12 ng/ml



#14 Endrin

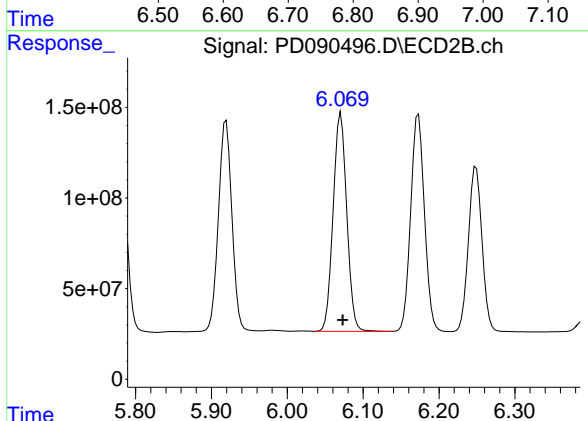
R.T.: 5.779 min  
 Delta R.T.: -0.003 min  
 Response: 1621256210  
 Conc: 45.25 ng/ml



#15 Endosulfan II

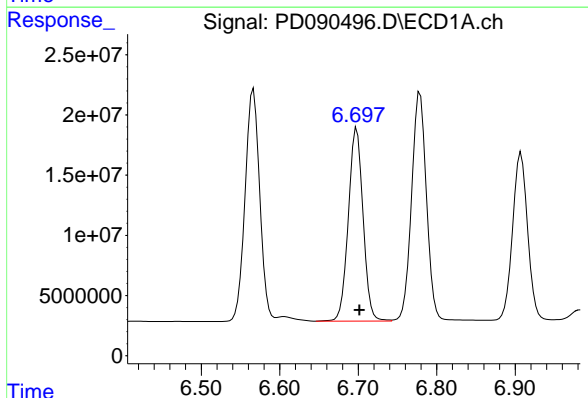
R.T.: 6.779 min  
Delta R.T.: -0.003 min  
Response: 251607181  
Conc: 51.58 ng/ml

Instrument :  
ECD\_D  
ClientSampleId :  
PB169957BS



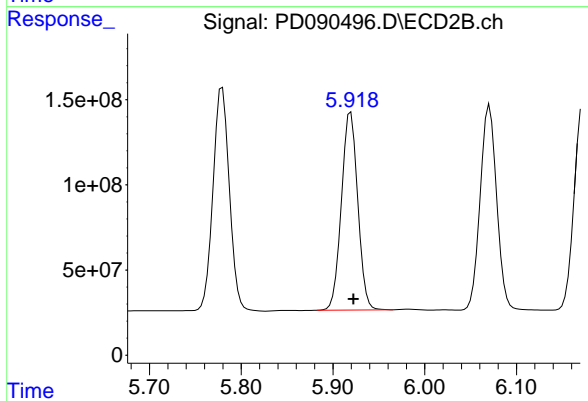
#15 Endosulfan II

R.T.: 6.071 min  
Delta R.T.: -0.002 min  
Response: 1505801893  
Conc: 44.62 ng/ml



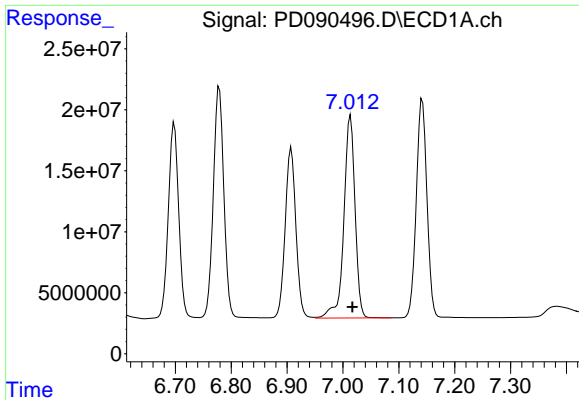
#16 4,4'-DDD

R.T.: 6.698 min  
Delta R.T.: -0.003 min  
Response: 209289502  
Conc: 51.07 ng/ml



#16 4,4'-DDD

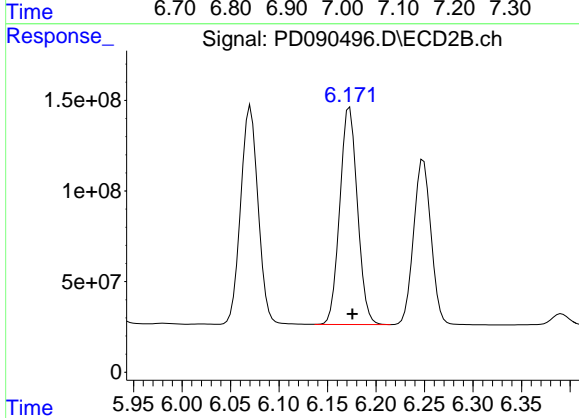
R.T.: 5.919 min  
Delta R.T.: -0.003 min  
Response: 1434066747  
Conc: 44.22 ng/ml



#17 4,4'-DDT

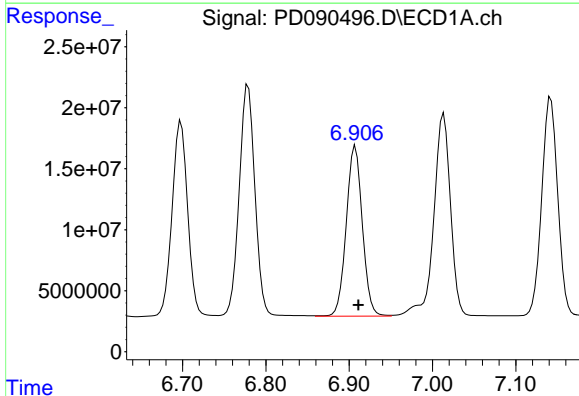
R.T.: 7.014 min  
Delta R.T.: -0.003 min  
Response: 231166918  
Conc: 51.92 ng/ml

Instrument :  
ECD\_D  
ClientSampleId :  
PB169957BS



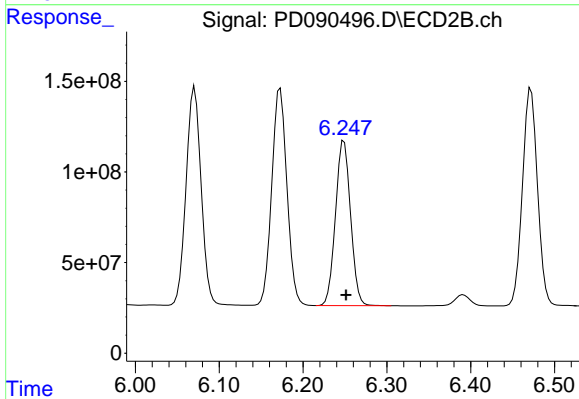
#17 4,4'-DDT

R.T.: 6.173 min  
Delta R.T.: -0.003 min  
Response: 1515286533  
Conc: 44.08 ng/ml



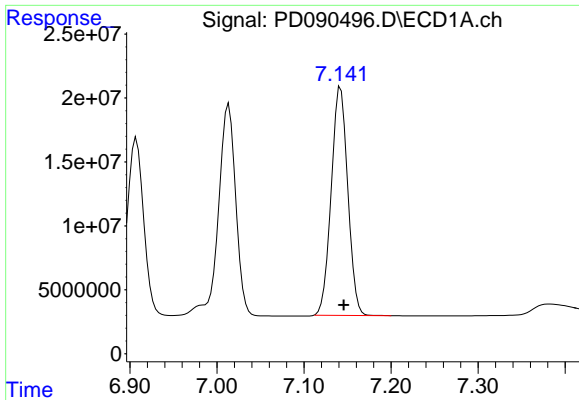
#18 Endrin aldehyde

R.T.: 6.907 min  
Delta R.T.: -0.004 min  
Response: 187311904  
Conc: 54.60 ng/ml



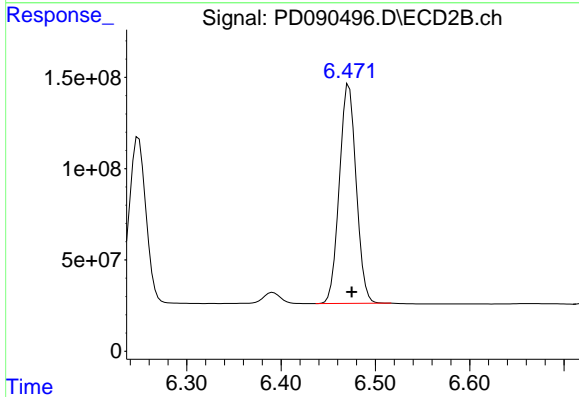
#18 Endrin aldehyde

R.T.: 6.249 min  
Delta R.T.: -0.003 min  
Response: 1136607866  
Conc: 48.27 ng/ml

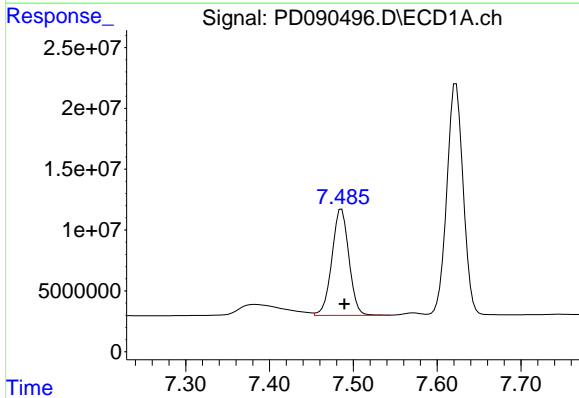


#19 Endosulfan Sulfate  
 R.T.: 7.142 min  
 Delta R.T.: -0.004 min  
 Response: 236328720  
 Conc: 51.37 ng/ml

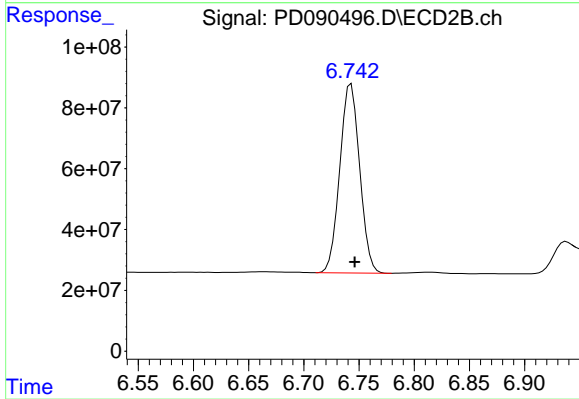
Instrument :  
 ECD\_D  
 ClientSampleId :  
 PB169957BS



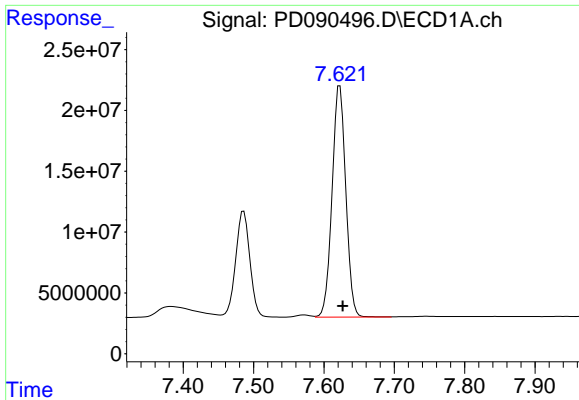
#19 Endosulfan Sulfate  
 R.T.: 6.472 min  
 Delta R.T.: -0.003 min  
 Response: 1491468608  
 Conc: 45.62 ng/ml



#20 Methoxychlor  
 R.T.: 7.486 min  
 Delta R.T.: -0.004 min  
 Response: 123356572  
 Conc: 52.35 ng/ml



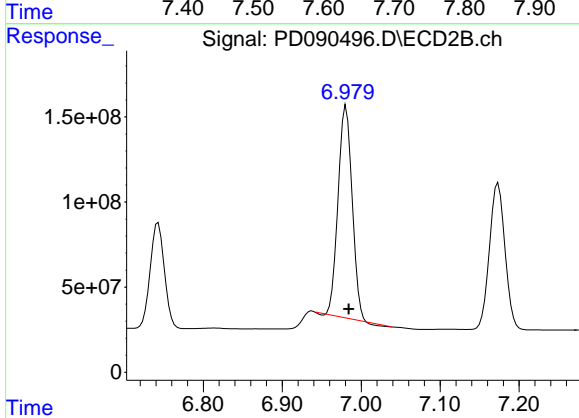
#20 Methoxychlor  
 R.T.: 6.743 min  
 Delta R.T.: -0.003 min  
 Response: 778889566  
 Conc: 44.76 ng/ml



#21 Endrin ketone

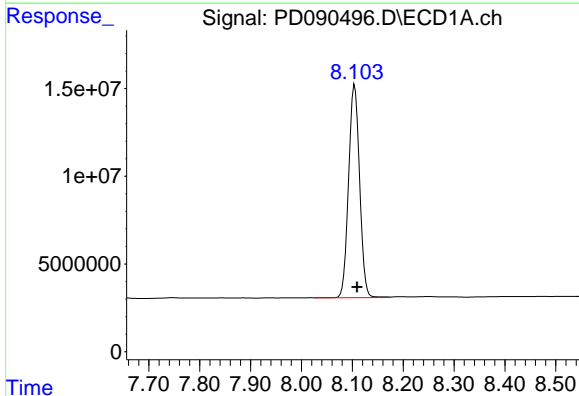
R.T.: 7.623 min  
 Delta R.T.: -0.004 min  
 Response: 257650510  
 Conc: 52.08 ng/ml

Instrument :  
 ECD\_D  
 ClientSampleId :  
 PB169957BS



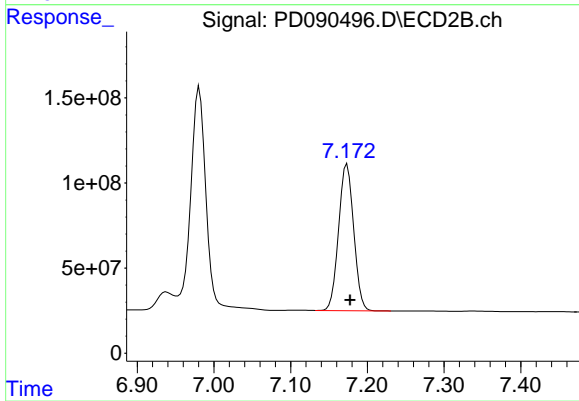
#21 Endrin ketone

R.T.: 6.981 min  
 Delta R.T.: -0.003 min  
 Response: 1525219856  
 Conc: 42.25 ng/ml



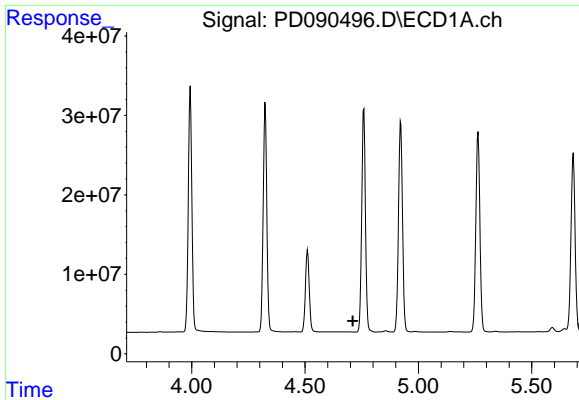
#22 Mirex

R.T.: 8.105 min  
 Delta R.T.: -0.005 min  
 Response: 182908414  
 Conc: 49.37 ng/ml



#22 Mirex

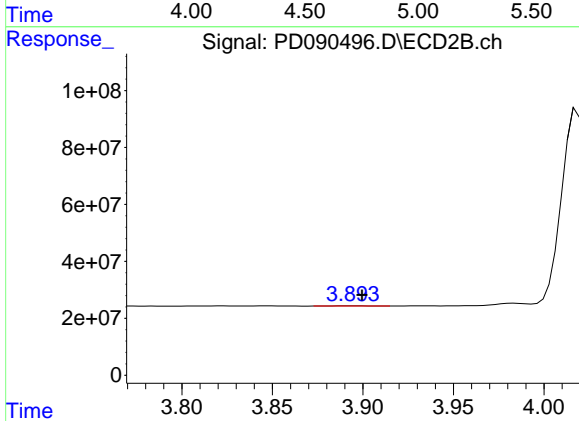
R.T.: 7.173 min  
 Delta R.T.: -0.004 min  
 Response: 1180266511  
 Conc: 42.75 ng/ml



#23 Chlordane-1

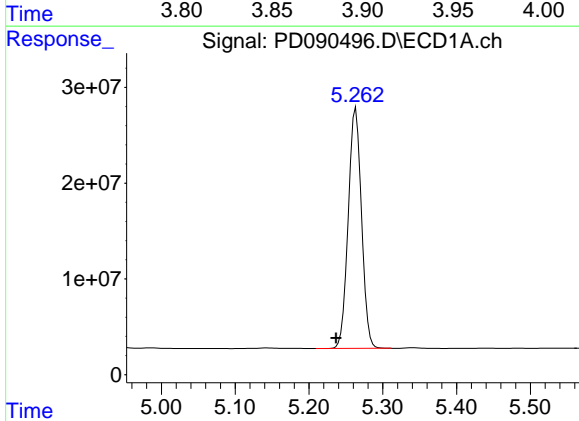
R.T.: 0.000 min  
 Exp R.T.: 4.710 min  
 Response: 0  
 Conc: N.D.

Instrument :  
 ECD\_D  
 ClientSampleId :  
 PB169957BS



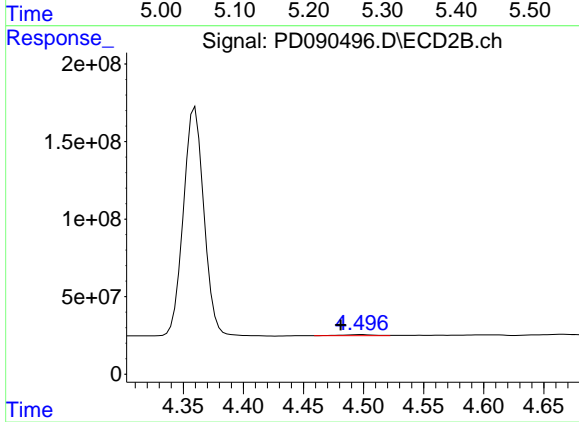
#23 Chlordane-1

R.T.: 3.895 min  
 Delta R.T.: -0.005 min  
 Response: 877035  
 Conc: 0.73 ng/ml



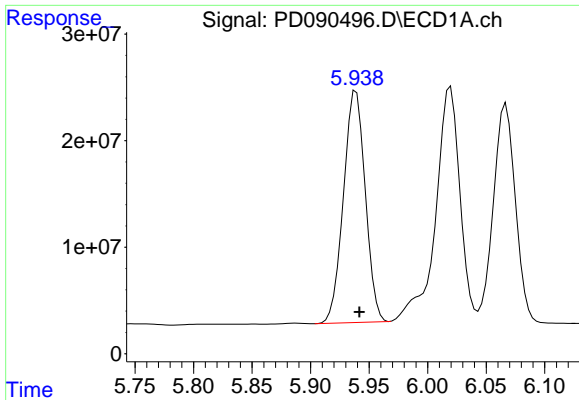
#24 Chlordane-2

R.T.: 5.263 min  
 Delta R.T.: 0.027 min  
 Response: 313465671  
 Conc: 1460.73 ng/ml



#24 Chlordane-2

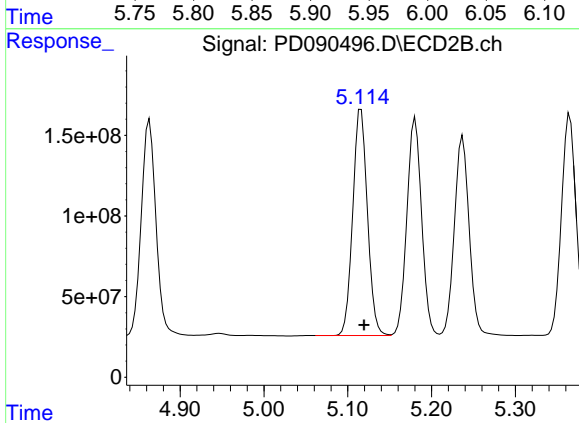
R.T.: 4.498 min  
 Delta R.T.: 0.017 min  
 Response: 11803701  
 Conc: 9.44 ng/ml



#25 Chlordane-3

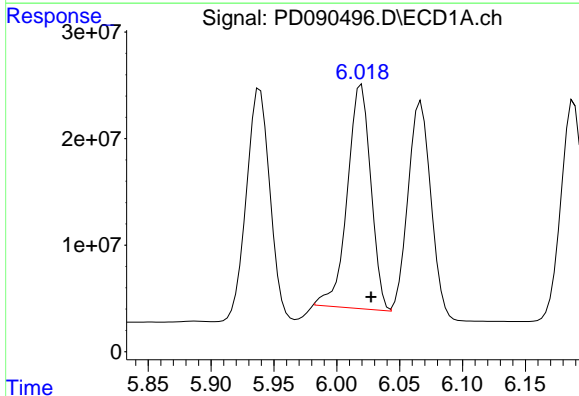
R.T.: 5.939 min  
 Delta R.T.: -0.003 min  
 Response: 282160080  
 Conc: 337.10 ng/ml

Instrument :  
 ECD\_D  
 ClientSampleId :  
 PB169957BS



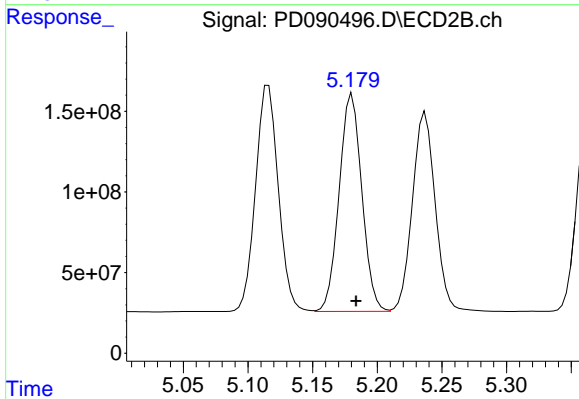
#25 Chlordane-3

R.T.: 5.116 min  
 Delta R.T.: -0.004 min  
 Response: 1714882248  
 Conc: 452.41 ng/ml



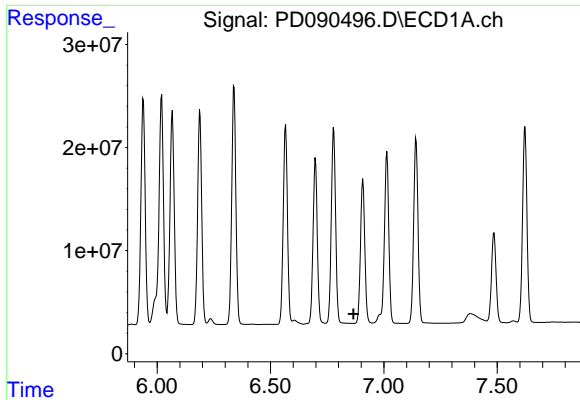
#26 Chlordane-4

R.T.: 6.020 min  
 Delta R.T.: -0.008 min  
 Response: 273549551  
 Conc: 268.04 ng/ml



#26 Chlordane-4

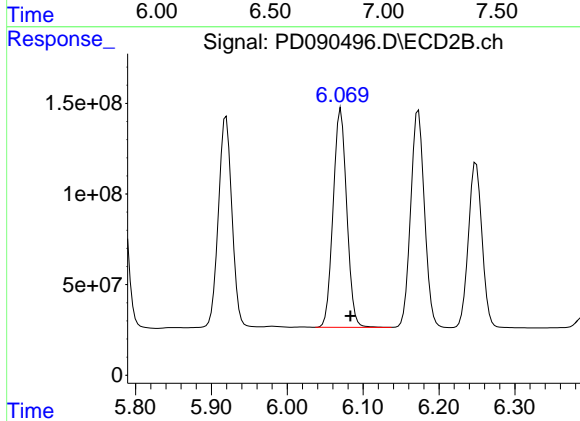
R.T.: 5.181 min  
 Delta R.T.: -0.003 min  
 Response: 1643723109  
 Conc: 504.82 ng/ml



#27 Chlordane-5

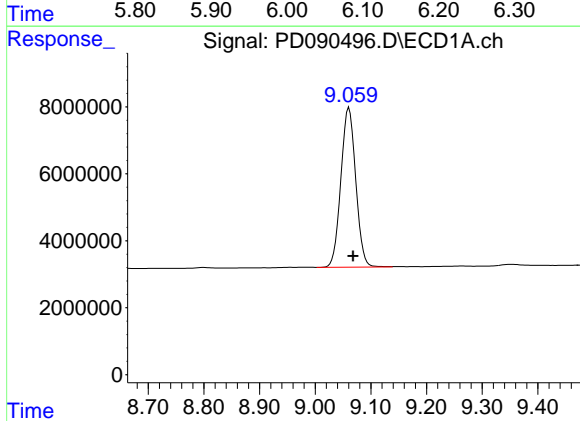
R.T.: 0.000 min  
 Exp R.T.: 6.867 min  
 Response: 0  
 Conc: N.D.

Instrument : ECD\_D  
 ClientSampleId : PB169957BS



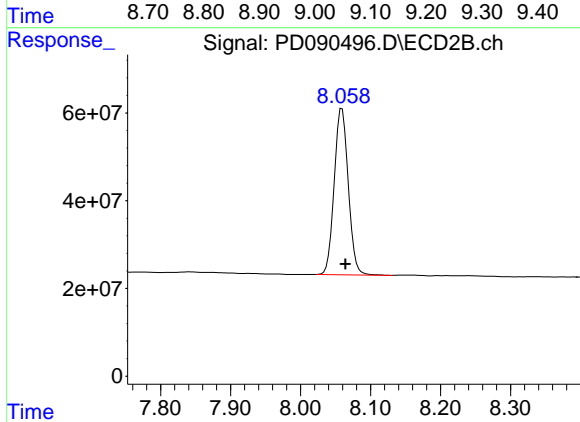
#27 Chlordane-5

R.T.: 6.071 min  
 Delta R.T.: -0.013 min  
 Response: 1505801893  
 Conc: 992.22 ng/ml



#28 Decachlorobiphenyl

R.T.: 9.061 min  
 Delta R.T.: -0.007 min  
 Response: 88403644  
 Conc: 18.32 ng/ml



#28 Decachlorobiphenyl

R.T.: 8.059 min  
 Delta R.T.: -0.005 min  
 Response: 528849309  
 Conc: 16.32 ng/ml