

Data Path : Z:\pestpcbsrv\HPCHEM1\ECD\_D\Data\PD100325\  
 Data File : PD090497.D  
 Signal(s) : Signal #1: ECD1A.ch Signal #2: ECD2B.ch  
 Acq On : 02 Oct 2025 15:30  
 Operator : AR\AJ  
 Sample : PB169925TB  
 Misc :  
 ALS Vial : 7 Sample Multiplier: 1

Instrument :  
 ECD\_D  
 ClientSampleId :  
 PB169925TB

Integration File signal 1: autoint1.e  
 Integration File signal 2: autoint2.e  
 Quant Time: Oct 03 02:45:14 2025  
 Quant Method : Z:\pestpcbsrv\HPCHEM1\ECD\_D\Method\PD091825.M  
 Quant Title : GC Extractables  
 QLast Update : Fri Sep 19 05:52:38 2025  
 Response via : Initial Calibration  
 Integrator: ChemStation

Volume Inj. : 1 µl  
 Signal #1 Phase : ZB-MR2 Signal #2 Phase: ZB-MR2  
 Signal #1 Info : 30M x 0.32mm x0.5 Signal #2 Info : 30M x 0.32mm x 0.25µm

	Compound	RT#1	RT#2	Resp#1	Resp#2	ng/ml	ng/ml
-----							
System Monitoring Compounds							
1)	SA Tetrachlo...	3.551	2.874	48120732	391.3E6	14.804	14.253
28)	SA Decachlor...	9.069	8.062	86948429	522.4E6	18.020	16.117
Target Compounds							
2)	A alpha-BHC	0.000	3.376	0	1842278	N.D.	0.042 #
3)	MA gamma-BHC...	4.341	3.719	99443	1227501	0.015	0.030 #
4)	MA Heptachlor	4.947f	4.067	470702	71465	0.071	0.002 #
5)	MB Aldrin	0.000	4.374	0	643127	N.D.	0.016 #
6)	B beta-BHC	0.000	4.046f	0	447683	N.D.	0.026 #
7)	B delta-BHC	4.780f	4.254	1485125	215608	0.230	0.005 #
8)	B Heptachlo...	0.000	4.845f	0	1311462	N.D.	0.036 #
9)	A Endosulfan I	0.000	5.258f	0	130420	N.D.	0.004 #
10)	B gamma-Chl...	5.926f	5.132	851522	389571	0.149	0.010 #
11)	B alpha-Chl...	6.001f	5.184	11148733	1163901	1.935	0.031 #
12)	B 4,4'-DDE	0.000	5.376	0	266447	N.D.	0.007 #
13)	MA Dieldrin	0.000	5.501	0	979214	N.D.	0.025 #
14)	MA Endrin	6.573	5.786	153734	1965129	0.031	0.055 #
15)	B Endosulfa...	6.775	6.072	492864	84870	0.101	0.003 #
16)	A 4,4'-DDD	0.000	5.917	0	1904537	N.D.	0.059 #
17)	MA 4,4'-DDT	7.015	6.178	19142	1643074	0.004	0.048 #
18)	B Endrin al...	6.933f	6.258	495756	1226644	0.145	0.052 #
19)	B Endosulfa...	0.000	6.452f	0	751593	N.D.	0.023 #
20)	A Methoxychlor	7.485	0.000	211501	0	0.090	N.D. #
21)	B Endrin ke...	7.627	0.000	116437	0	0.024	N.D. #
22)	Mirex	0.000	7.168	0	2580177	N.D.	0.093 #
23)	Chlordane-1	0.000	3.888	0	257828	N.D.	0.214 #
24)	Chlordane-2	0.000	4.498	0	1214775	N.D.	0.971 #
25)	Chlordane-3	5.926	5.132	851522	389571	1.017	0.103 #
26)	Chlordane-4	6.001f	5.184	11148733	1163901	10.924	0.357 #
27)	Chlordane-5	6.850	6.072	101023	84870	0.567	0.056 #

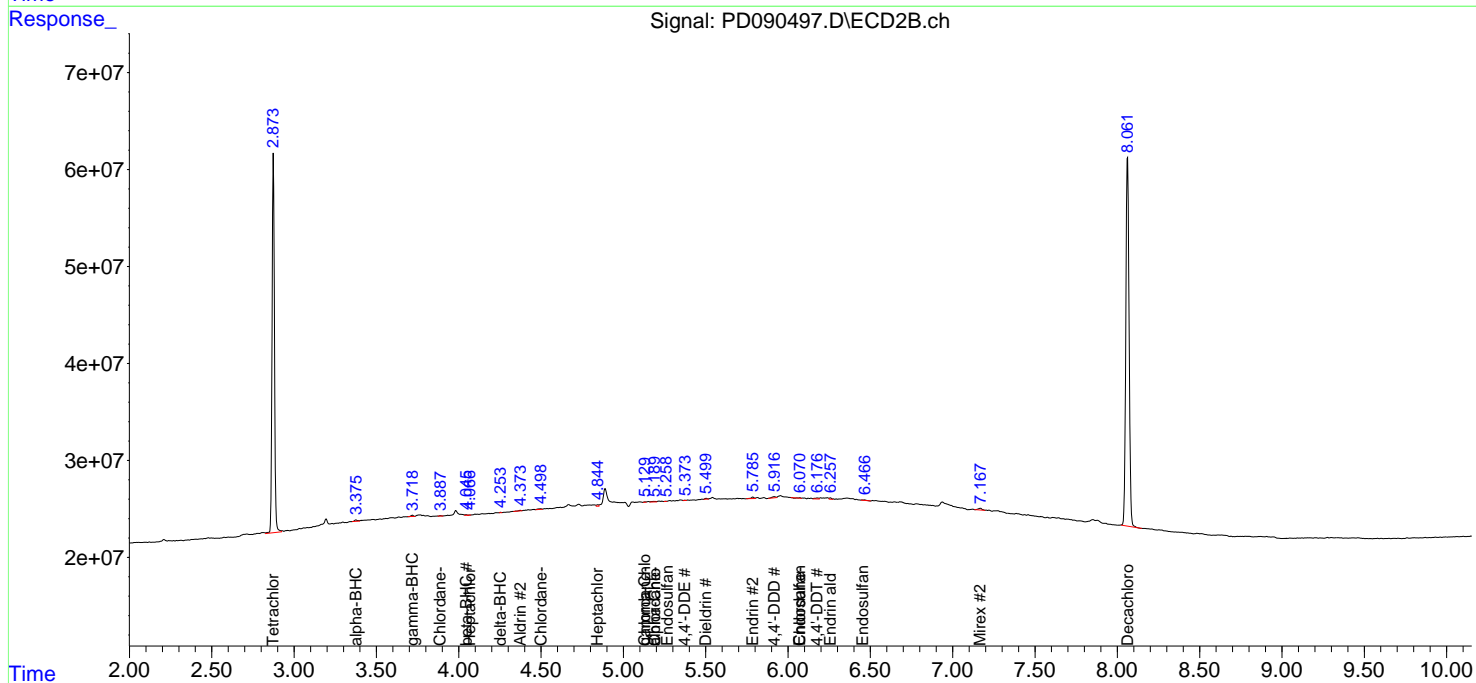
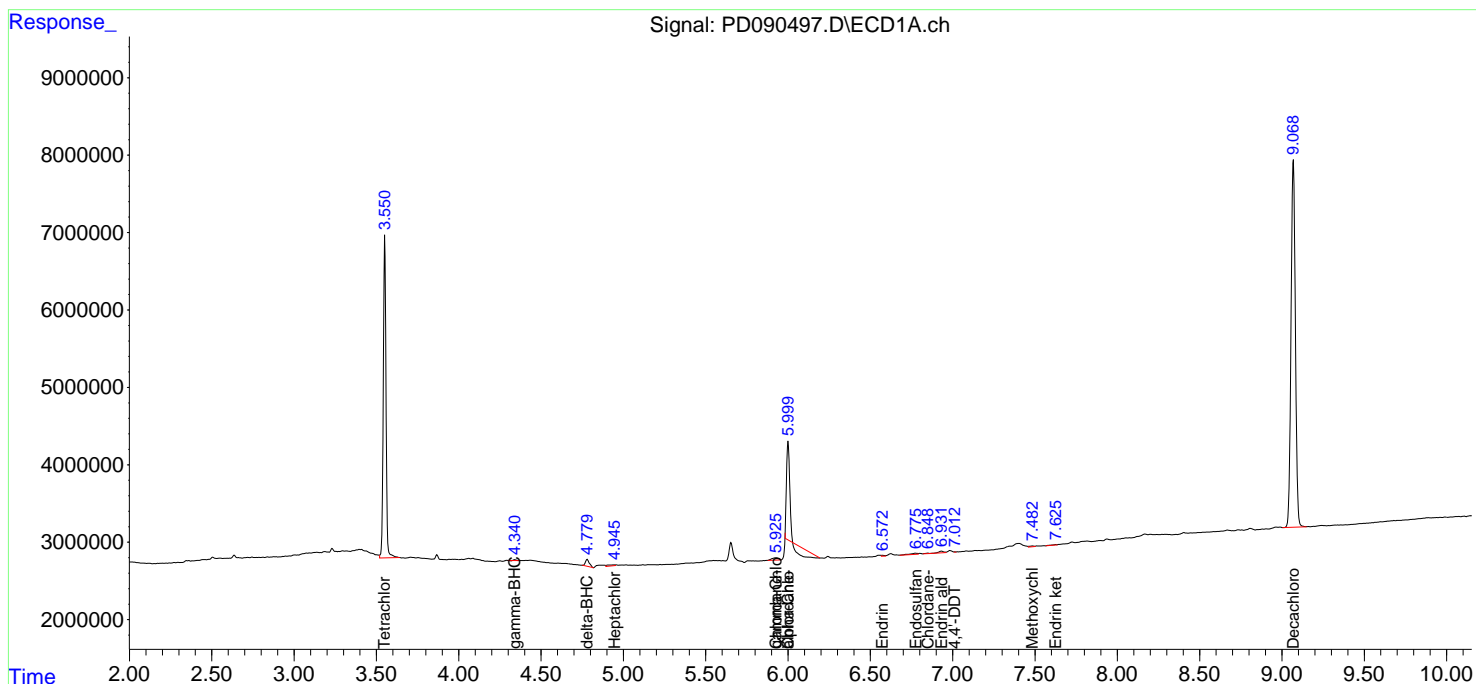
(f)=RT Delta > 1/2 Window (#)=Amounts differ by > 25% (m)=manual int.

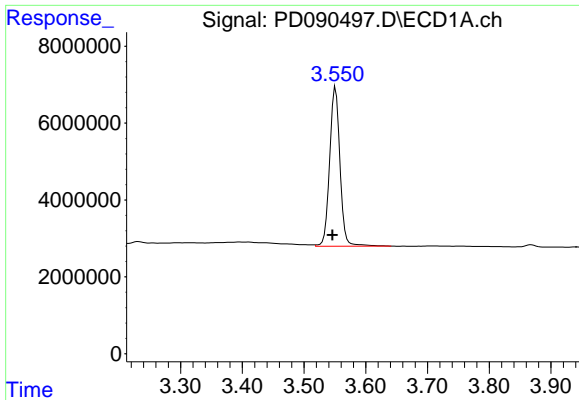
Data Path : Z:\pestpcbsrv\HPCHEM1\ECD\_D\Data\PD100325\  
 Data File : PD090497.D  
 Signal(s) : Signal #1: ECD1A.ch Signal #2: ECD2B.ch  
 Acq On : 02 Oct 2025 15:30  
 Operator : AR\AJ  
 Sample : PB169925TB  
 Misc :  
 ALS Vial : 7 Sample Multiplier: 1

**Instrument :**  
 ECD\_D  
**ClientSampleId :**  
 PB169925TB

Integration File signal 1: autoint1.e  
 Integration File signal 2: autoint2.e  
 Quant Time: Oct 03 02:45:14 2025  
 Quant Method : Z:\pestpcbsrv\HPCHEM1\ECD\_D\Method\PD091825.M  
 Quant Title : GC Extractables  
 QLast Update : Fri Sep 19 05:52:38 2025  
 Response via : Initial Calibration  
 Integrator: ChemStation

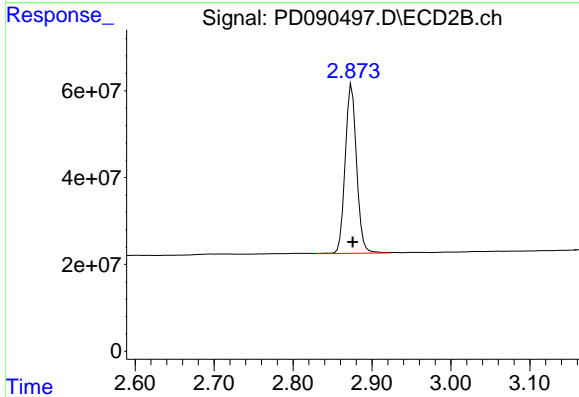
Volume Inj. : 1 µl  
 Signal #1 Phase : ZB-MR1 Signal #2 Phase: ZB-MR2  
 Signal #1 Info : 30M x 0.32mm x0.5 Signal #2 Info : 30M x 0.32mm x 0.25µm



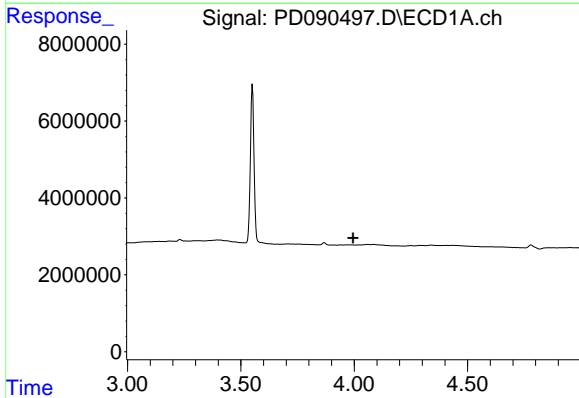


#1 Tetrachloro-m-xylene  
 R.T.: 3.551 min  
 Delta R.T.: 0.005 min  
 Response: 48120732  
 Conc: 14.80 ng/ml

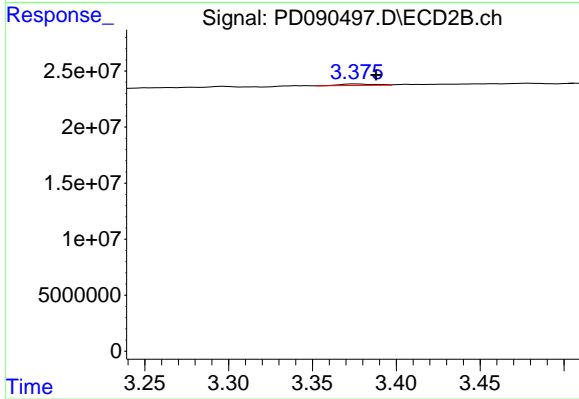
Instrument :  
 ECD\_D  
 ClientSampleId :  
 PB169925TB



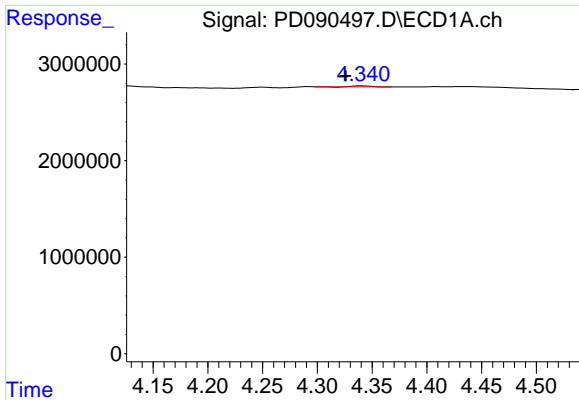
#1 Tetrachloro-m-xylene  
 R.T.: 2.874 min  
 Delta R.T.: -0.002 min  
 Response: 391250369  
 Conc: 14.25 ng/ml



#2 alpha-BHC  
 R.T.: 0.000 min  
 Exp R.T. : 3.995 min  
 Response: 0  
 Conc: N.D.



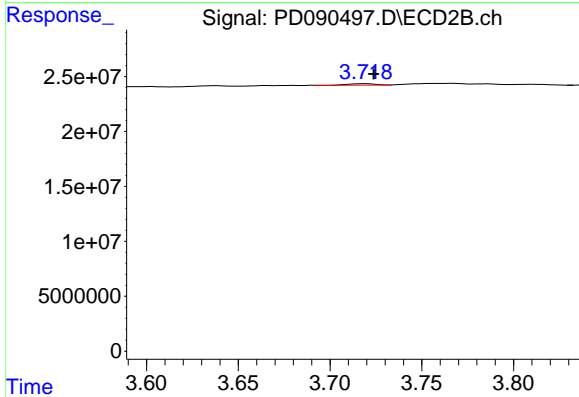
#2 alpha-BHC  
 R.T.: 3.376 min  
 Delta R.T.: -0.012 min  
 Response: 1842278  
 Conc: 0.04 ng/ml



#3 gamma-BHC (Lindane)

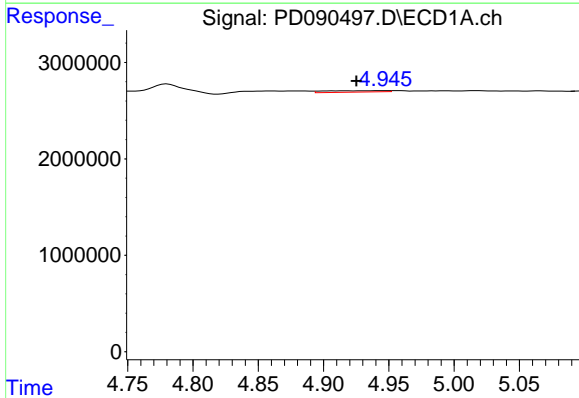
R.T.: 4.341 min  
 Delta R.T.: 0.015 min  
 Response: 99443  
 Conc: 0.02 ng/ml

Instrument :  
 ECD\_D  
 ClientSampleId :  
 PB169925TB



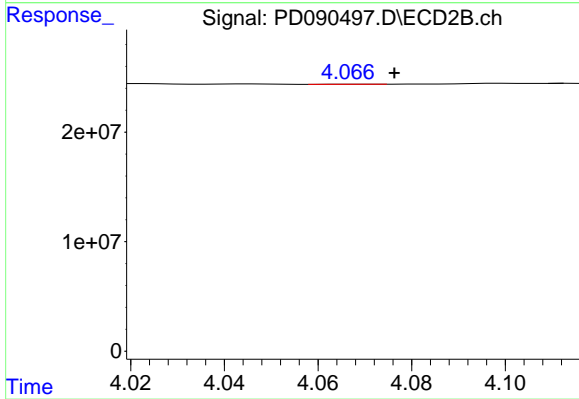
#3 gamma-BHC (Lindane)

R.T.: 3.719 min  
 Delta R.T.: -0.005 min  
 Response: 1227501  
 Conc: 0.03 ng/ml



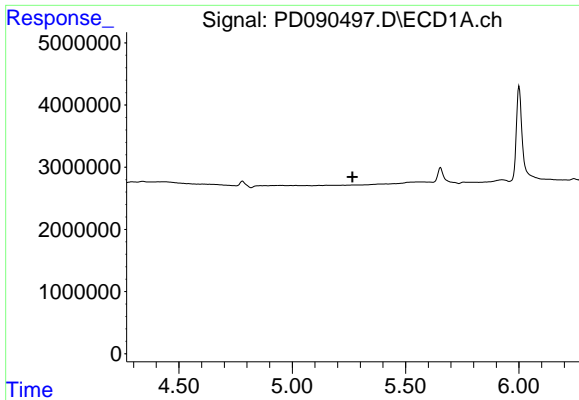
#4 Heptachlor

R.T.: 4.947 min  
 Delta R.T.: 0.022 min  
 Response: 470702  
 Conc: 0.07 ng/ml



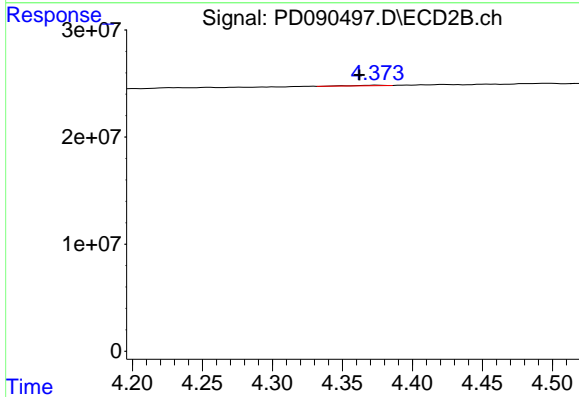
#4 Heptachlor

R.T.: 4.067 min  
 Delta R.T.: -0.009 min  
 Response: 71465  
 Conc: 0.00 ng/ml

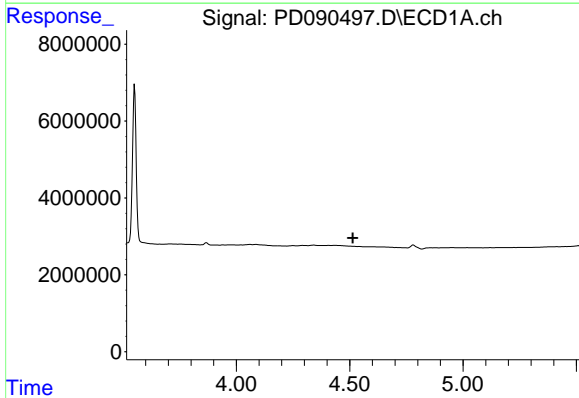


#5 Aldrin  
 R.T.: 0.000 min  
 Exp R.T.: 5.266 min  
 Response: 0  
 Conc: N.D.

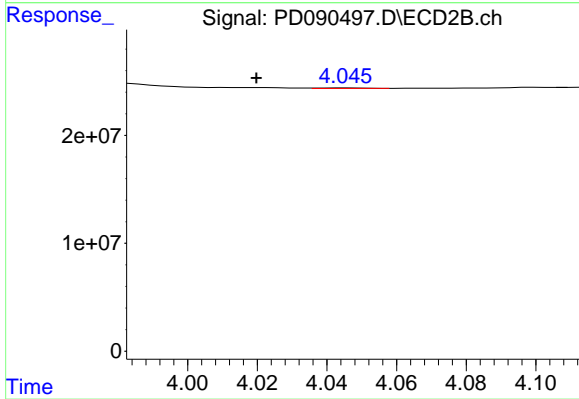
Instrument :  
 ECD\_D  
 ClientSampleId :  
 PB169925TB



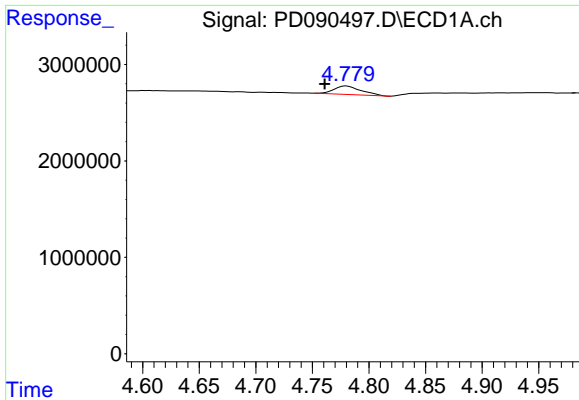
#5 Aldrin  
 R.T.: 4.374 min  
 Delta R.T.: 0.012 min  
 Response: 643127  
 Conc: 0.02 ng/ml



#6 beta-BHC  
 R.T.: 0.000 min  
 Exp R.T.: 4.513 min  
 Response: 0  
 Conc: N.D.



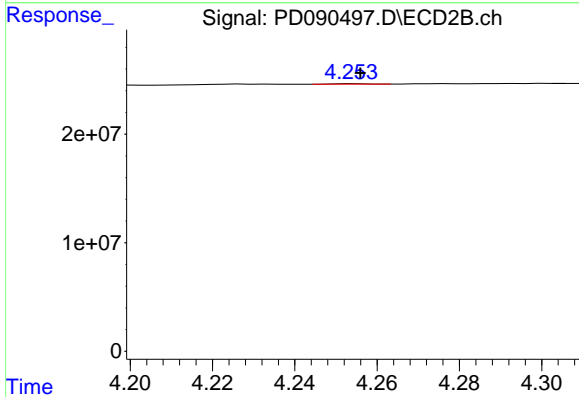
#6 beta-BHC  
 R.T.: 4.046 min  
 Delta R.T.: 0.026 min  
 Response: 447683  
 Conc: 0.03 ng/ml



#7 delta-BHC

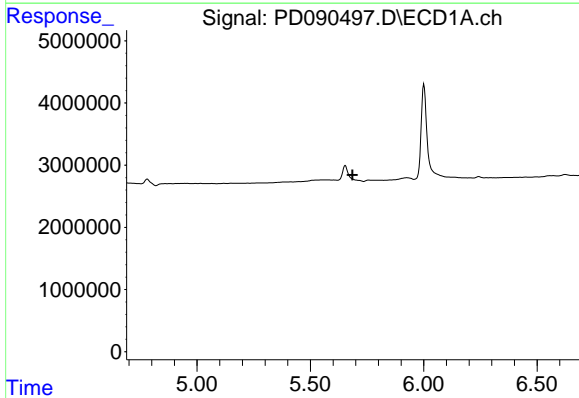
R.T.: 4.780 min  
 Delta R.T.: 0.019 min  
 Response: 1485125  
 Conc: 0.23 ng/ml

Instrument :  
 ECD\_D  
 ClientSampleId :  
 PB169925TB



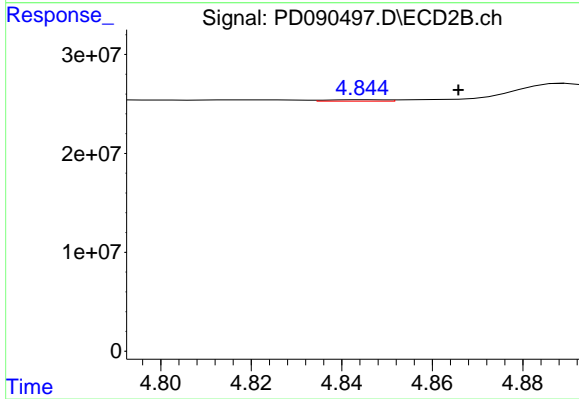
#7 delta-BHC

R.T.: 4.254 min  
 Delta R.T.: -0.002 min  
 Response: 215608  
 Conc: 0.01 ng/ml



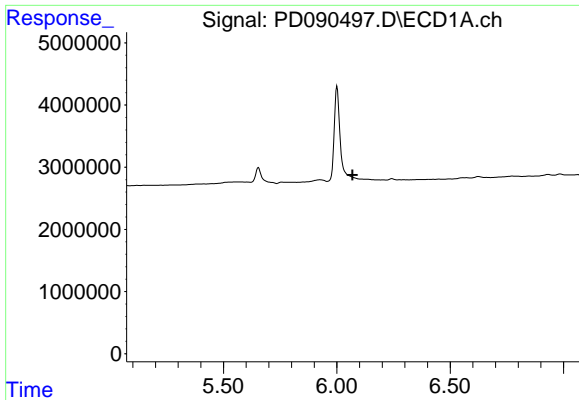
#8 Heptachlor epoxide

R.T.: 0.000 min  
 Exp R.T. : 5.686 min  
 Response: 0  
 Conc: N.D.



#8 Heptachlor epoxide

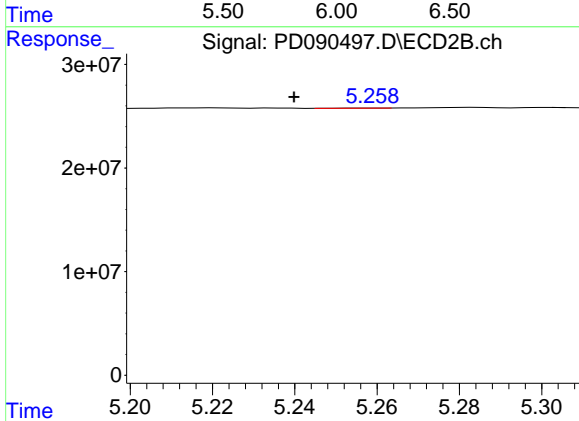
R.T.: 4.845 min  
 Delta R.T.: -0.020 min  
 Response: 1311462  
 Conc: 0.04 ng/ml



#9 Endosulfan I

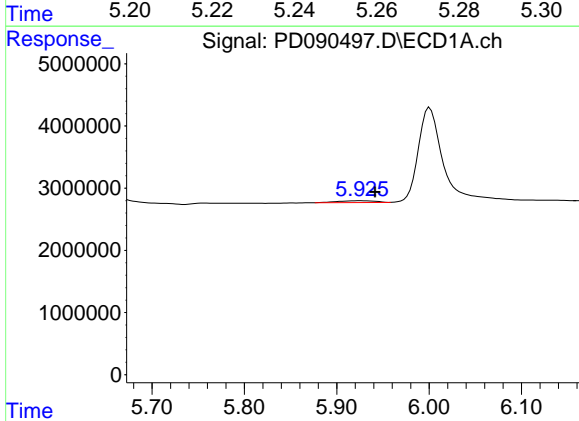
R.T.: 0.000 min  
 Exp R.T.: 6.070 min  
 Response: 0  
 Conc: N.D.

Instrument :  
 ECD\_D  
 ClientSampleId :  
 PB169925TB



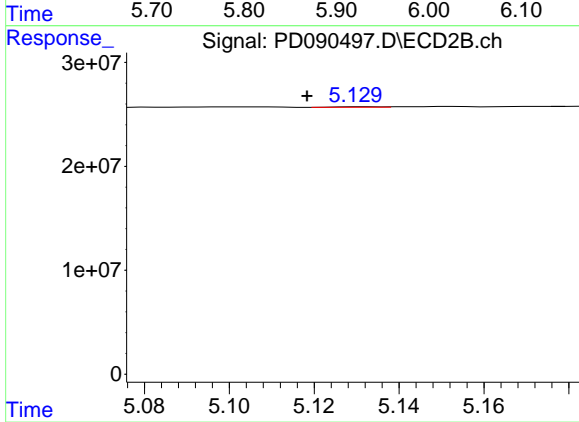
#9 Endosulfan I

R.T.: 5.258 min  
 Delta R.T.: 0.019 min  
 Response: 130420  
 Conc: 0.00 ng/ml



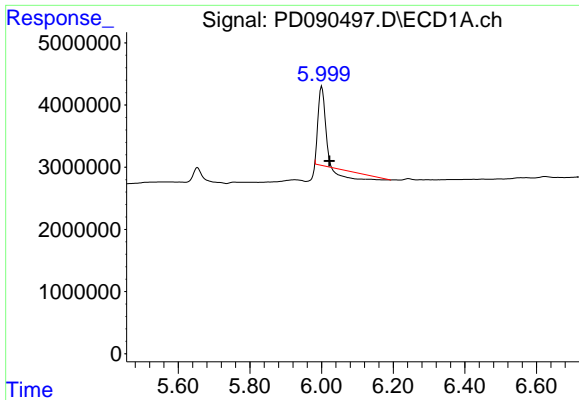
#10 gamma-Chlordane

R.T.: 5.926 min  
 Delta R.T.: -0.016 min  
 Response: 851522  
 Conc: 0.15 ng/ml



#10 gamma-Chlordane

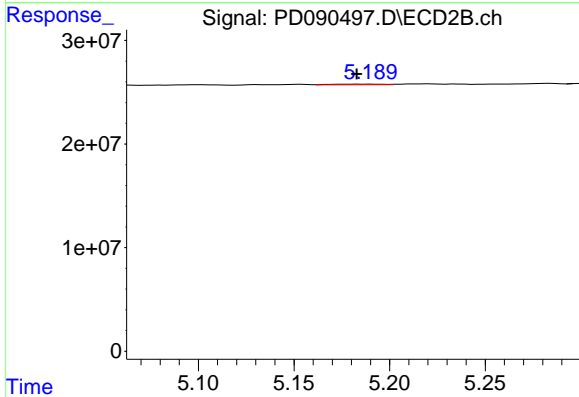
R.T.: 5.132 min  
 Delta R.T.: 0.013 min  
 Response: 389571  
 Conc: 0.01 ng/ml



#11 alpha-Chlordane

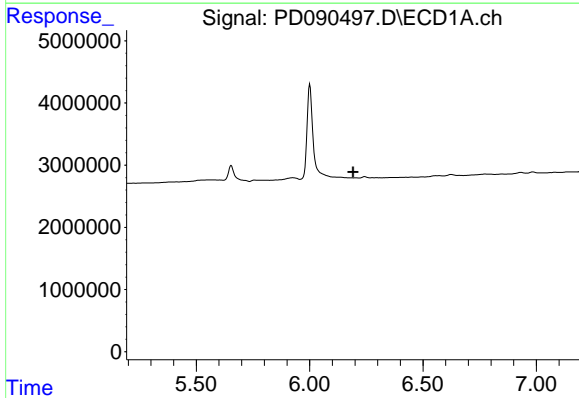
R.T.: 6.001 min  
 Delta R.T.: -0.022 min  
 Response: 11148733  
 Conc: 1.94 ng/ml

Instrument :  
 ECD\_D  
 ClientSampleId :  
 PB169925TB



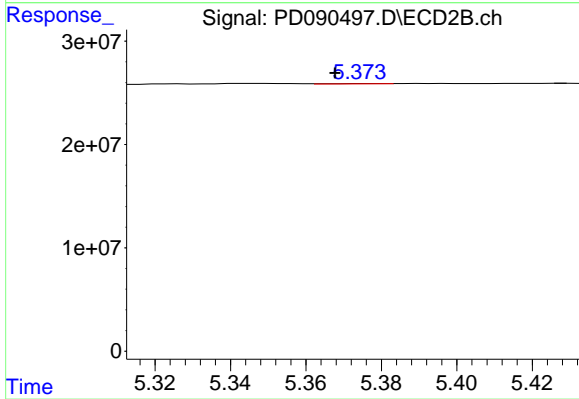
#11 alpha-Chlordane

R.T.: 5.184 min  
 Delta R.T.: 0.001 min  
 Response: 1163901  
 Conc: 0.03 ng/ml



#12 4,4'-DDE

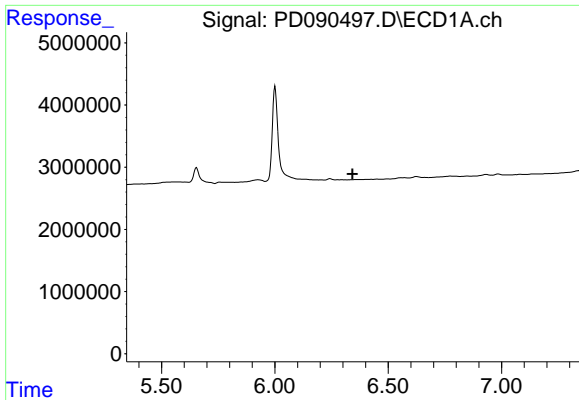
R.T.: 0.000 min  
 Exp R.T. : 6.192 min  
 Response: 0  
 Conc: N.D.



#12 4,4'-DDE

R.T.: 5.376 min  
 Delta R.T.: 0.008 min  
 Response: 266447  
 Conc: 0.01 ng/ml

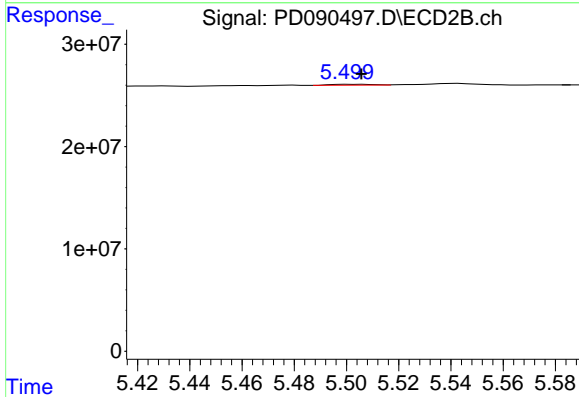




#13 Dieldrin

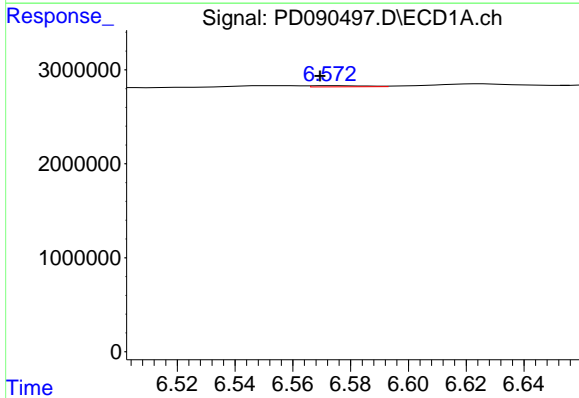
R.T.: 0.000 min  
 Exp R.T.: 6.343 min  
 Response: 0  
 Conc: N.D.

Instrument :  
 ECD\_D  
 ClientSampleId :  
 PB169925TB



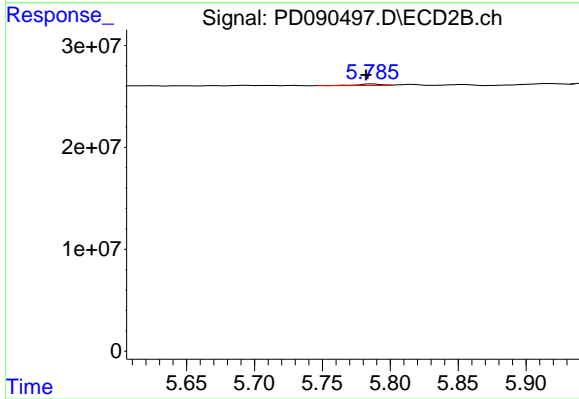
#13 Dieldrin

R.T.: 5.501 min  
 Delta R.T.: -0.005 min  
 Response: 979214  
 Conc: 0.03 ng/ml



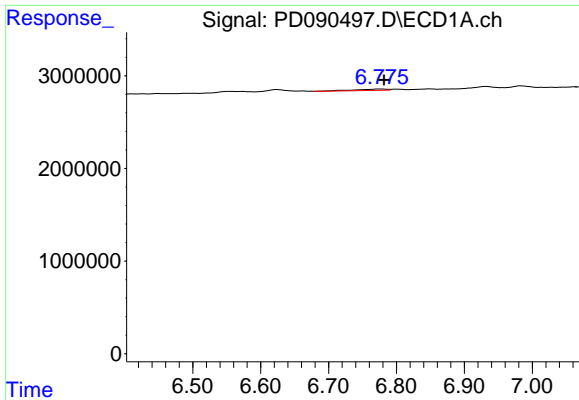
#14 Endrin

R.T.: 6.573 min  
 Delta R.T.: 0.004 min  
 Response: 153734  
 Conc: 0.03 ng/ml



#14 Endrin

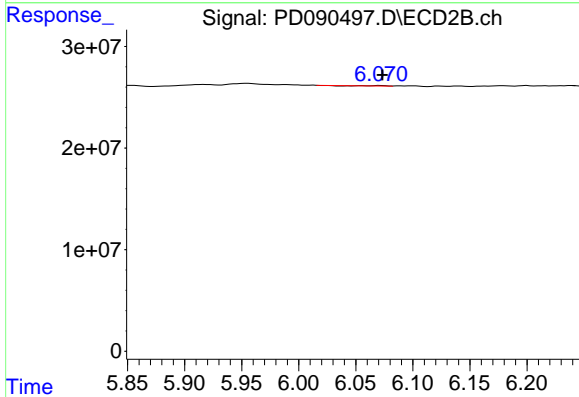
R.T.: 5.786 min  
 Delta R.T.: 0.004 min  
 Response: 1965129  
 Conc: 0.05 ng/ml



#15 Endosulfan II

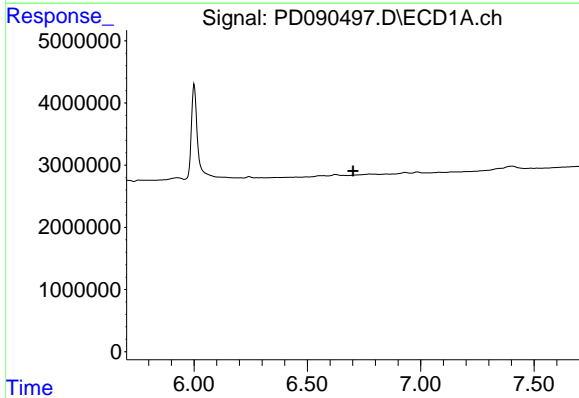
R.T.: 6.775 min  
 Delta R.T.: -0.006 min  
 Response: 492864  
 Conc: 0.10 ng/ml

Instrument :  
 ECD\_D  
 ClientSampleId :  
 PB169925TB



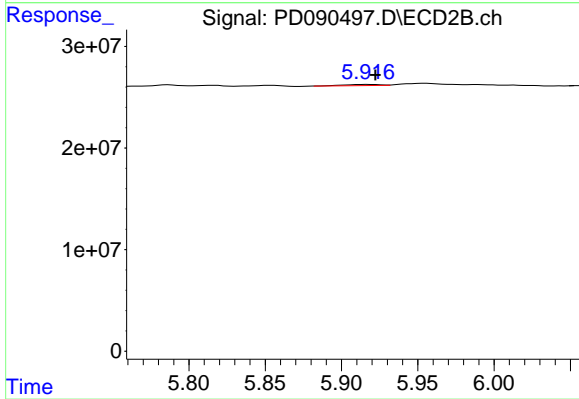
#15 Endosulfan II

R.T.: 6.072 min  
 Delta R.T.: -0.002 min  
 Response: 84870  
 Conc: 0.00 ng/ml



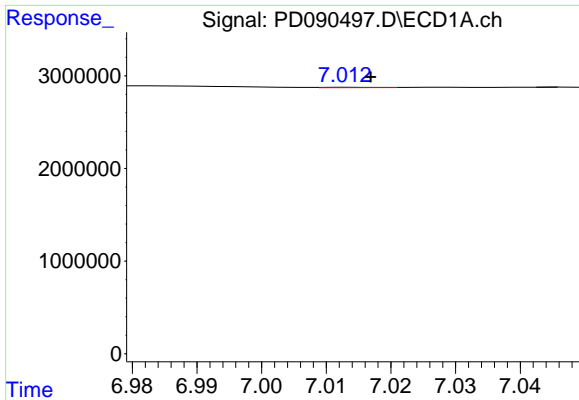
#16 4,4'-DDD

R.T.: 0.000 min  
 Exp R.T. : 6.701 min  
 Response: 0  
 Conc: N.D.



#16 4,4'-DDD

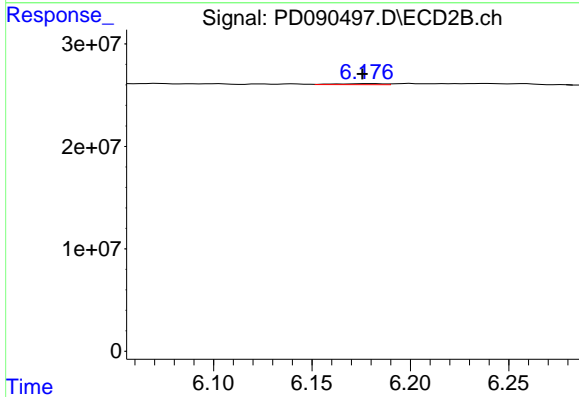
R.T.: 5.917 min  
 Delta R.T.: -0.005 min  
 Response: 1904537  
 Conc: 0.06 ng/ml



#17 4,4'-DDT

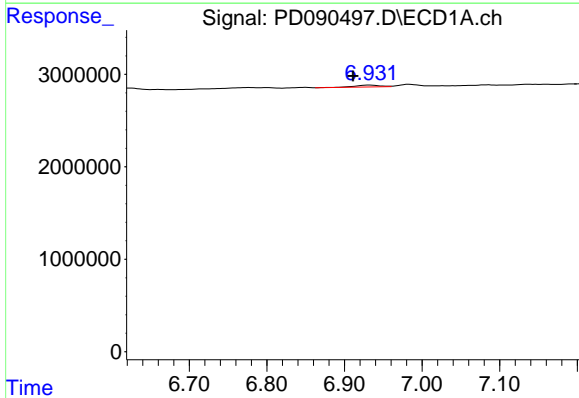
R.T.: 7.015 min  
 Delta R.T.: -0.002 min  
 Response: 19142  
 Conc: 0.00 ng/ml

Instrument :  
 ECD\_D  
 ClientSampleId :  
 PB169925TB



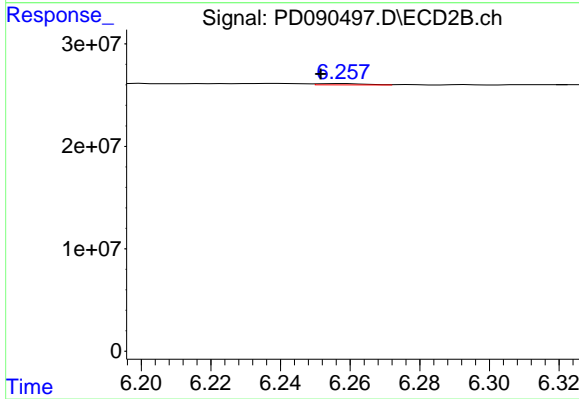
#17 4,4'-DDT

R.T.: 6.178 min  
 Delta R.T.: 0.002 min  
 Response: 1643074  
 Conc: 0.05 ng/ml



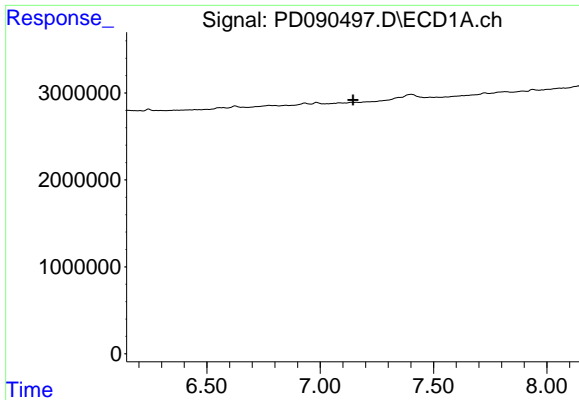
#18 Endrin aldehyde

R.T.: 6.933 min  
 Delta R.T.: 0.022 min  
 Response: 495756  
 Conc: 0.14 ng/ml



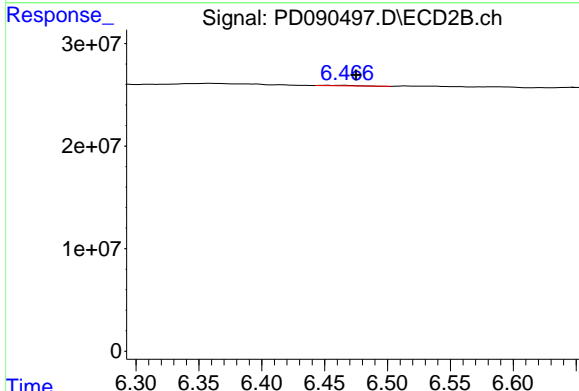
#18 Endrin aldehyde

R.T.: 6.258 min  
 Delta R.T.: 0.007 min  
 Response: 1226644  
 Conc: 0.05 ng/ml

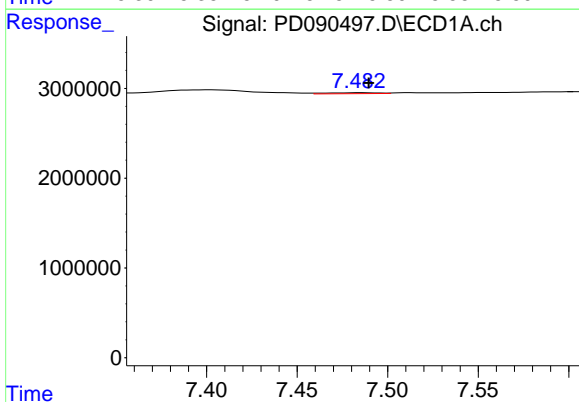


#19 Endosulfan Sulfate  
 R.T.: 0.000 min  
 Exp R.T.: 7.146 min  
 Response: 0  
 Conc: N.D.

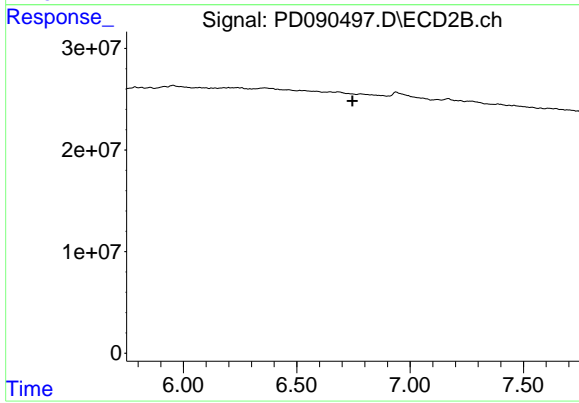
Instrument :  
 ECD\_D  
 ClientSampleId :  
 PB169925TB



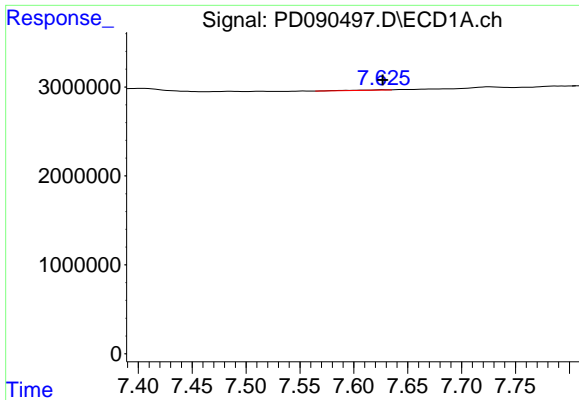
#19 Endosulfan Sulfate  
 R.T.: 6.452 min  
 Delta R.T.: -0.023 min  
 Response: 751593  
 Conc: 0.02 ng/ml



#20 Methoxychlor  
 R.T.: 7.485 min  
 Delta R.T.: -0.005 min  
 Response: 211501  
 Conc: 0.09 ng/ml



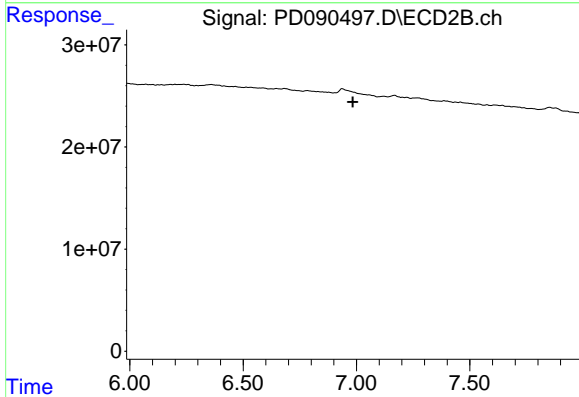
#20 Methoxychlor  
 R.T.: 0.000 min  
 Exp R.T.: 6.746 min  
 Response: 0  
 Conc: N.D.



#21 Endrin ketone

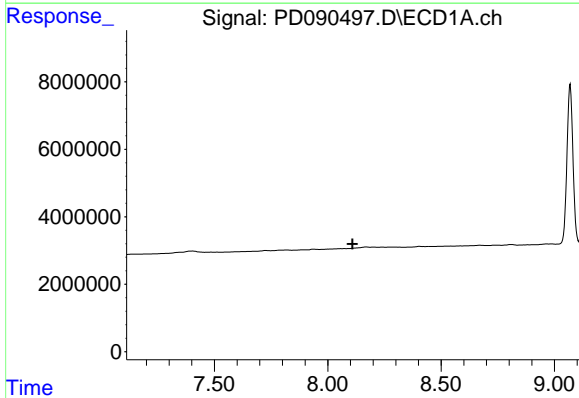
R.T.: 7.627 min  
 Delta R.T.: 0.000 min  
 Response: 116437  
 Conc: 0.02 ng/ml

Instrument : ECD\_D  
 ClientSampleId : PB169925TB



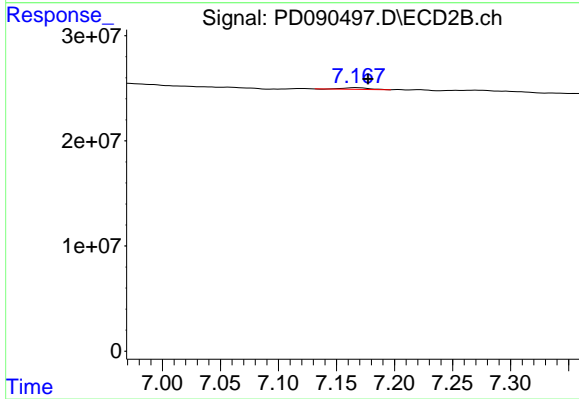
#21 Endrin ketone

R.T.: 0.000 min  
 Exp R.T. : 6.984 min  
 Response: 0  
 Conc: N.D.



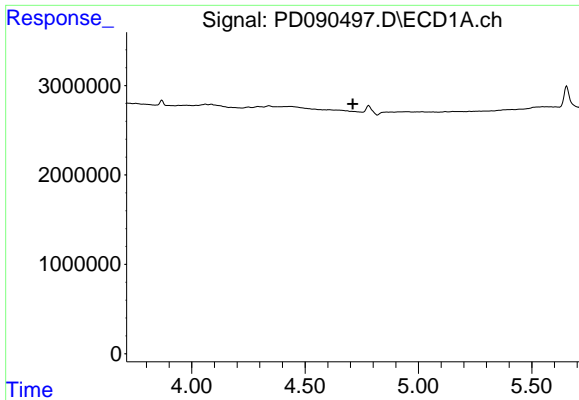
#22 Mirex

R.T.: 0.000 min  
 Exp R.T. : 8.109 min  
 Response: 0  
 Conc: N.D.



#22 Mirex

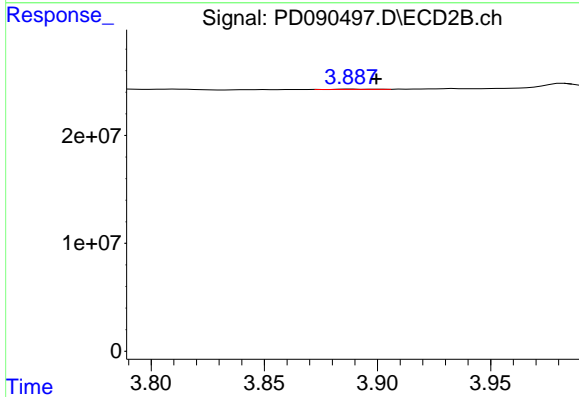
R.T.: 7.168 min  
 Delta R.T.: -0.009 min  
 Response: 2580177  
 Conc: 0.09 ng/ml



#23 Chlordane-1

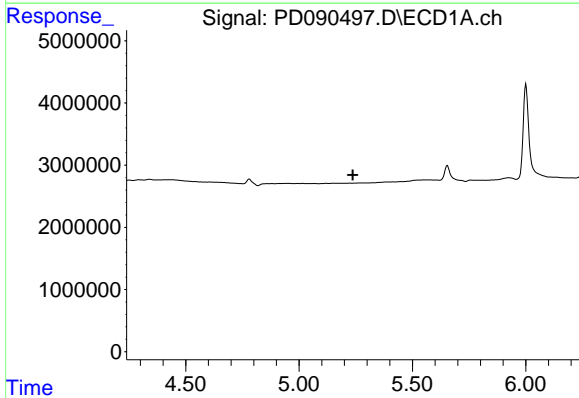
R.T.: 0.000 min  
 Exp R.T. : 4.710 min  
 Response: 0  
 Conc: N.D.

Instrument :  
 ECD\_D  
 ClientSampleId :  
 PB169925TB



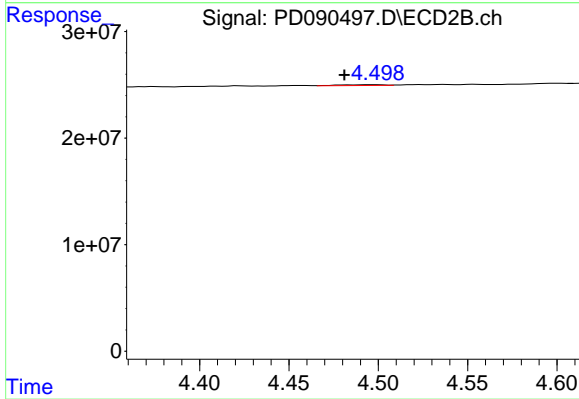
#23 Chlordane-1

R.T.: 3.888 min  
 Delta R.T.: -0.011 min  
 Response: 257828  
 Conc: 0.21 ng/ml



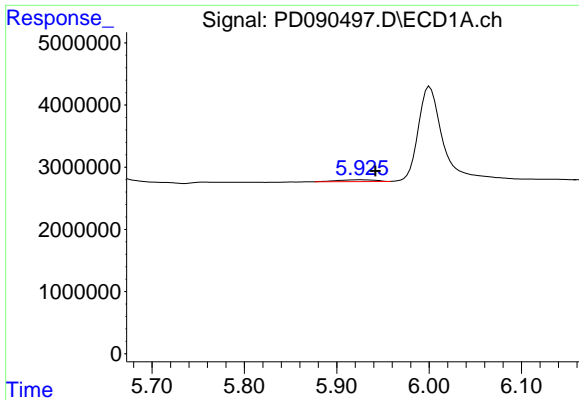
#24 Chlordane-2

R.T.: 0.000 min  
 Exp R.T. : 5.237 min  
 Response: 0  
 Conc: N.D.



#24 Chlordane-2

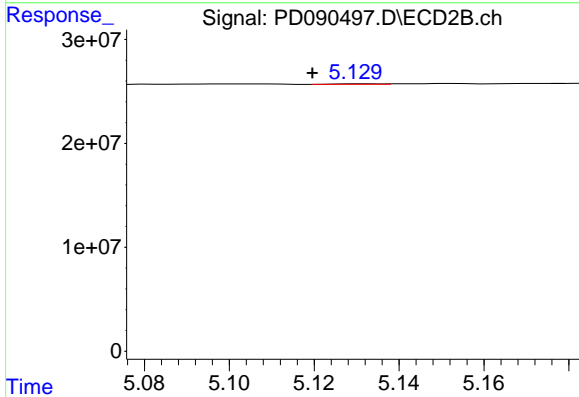
R.T.: 4.498 min  
 Delta R.T.: 0.017 min  
 Response: 1214775  
 Conc: 0.97 ng/ml



#25 Chlordane-3

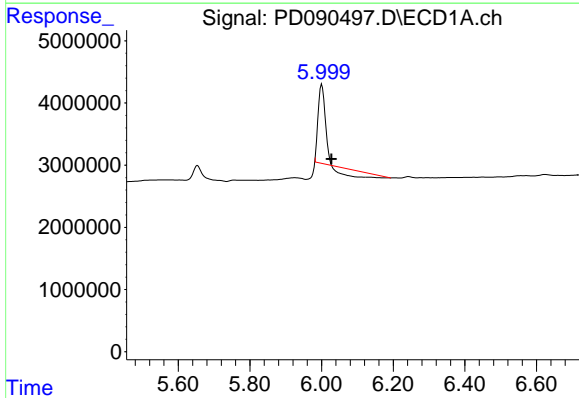
R.T.: 5.926 min  
 Delta R.T.: -0.016 min  
 Response: 851522  
 Conc: 1.02 ng/ml

Instrument :  
 ECD\_D  
 ClientSampleId :  
 PB169925TB



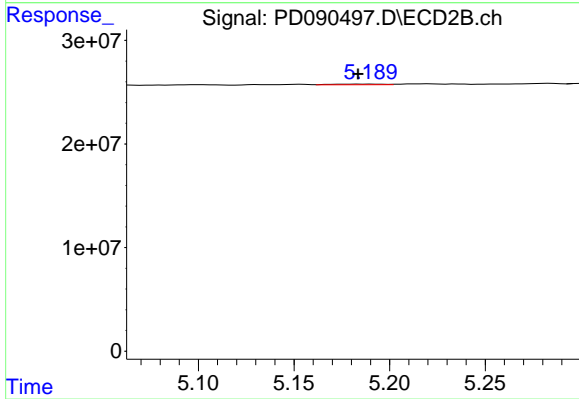
#25 Chlordane-3

R.T.: 5.132 min  
 Delta R.T.: 0.012 min  
 Response: 389571  
 Conc: 0.10 ng/ml



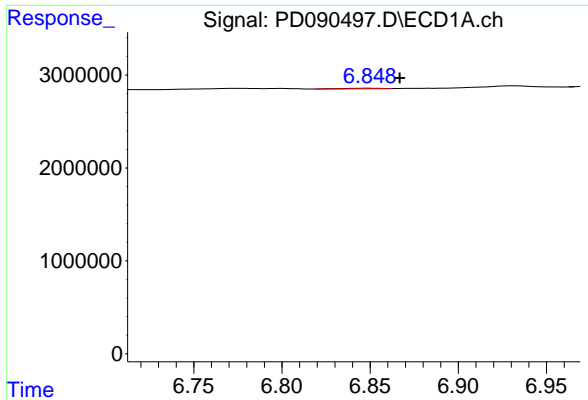
#26 Chlordane-4

R.T.: 6.001 min  
 Delta R.T.: -0.026 min  
 Response: 11148733  
 Conc: 10.92 ng/ml



#26 Chlordane-4

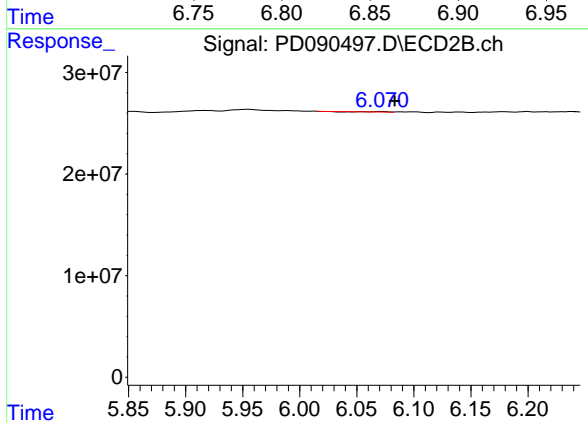
R.T.: 5.184 min  
 Delta R.T.: 0.000 min  
 Response: 1163901  
 Conc: 0.36 ng/ml



#27 Chlordane-5

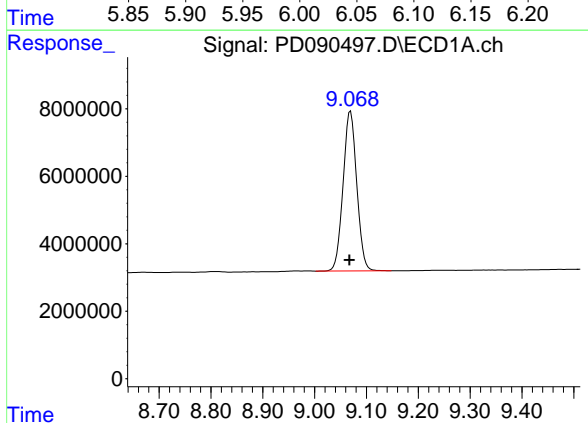
R.T.: 6.850 min  
 Delta R.T.: -0.017 min  
 Response: 101023  
 Conc: 0.57 ng/ml

Instrument :  
 ECD\_D  
 ClientSampleId :  
 PB169925TB



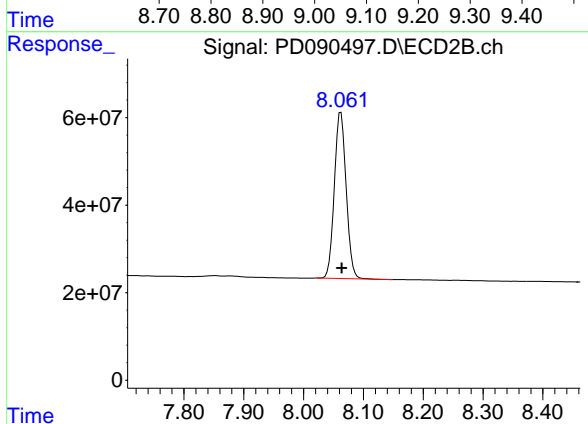
#27 Chlordane-5

R.T.: 6.072 min  
 Delta R.T.: -0.012 min  
 Response: 84870  
 Conc: 0.06 ng/ml



#28 Decachlorobiphenyl

R.T.: 9.069 min  
 Delta R.T.: 0.002 min  
 Response: 86948429  
 Conc: 18.02 ng/ml



#28 Decachlorobiphenyl

R.T.: 8.062 min  
 Delta R.T.: -0.002 min  
 Response: 522441295  
 Conc: 16.12 ng/ml