

Data Path : Z:\pestpcbsrv\HPCHEM1\ECD_D\Data\PD100325\
 Data File : PD090498.D
 Signal(s) : Signal #1: ECD1A.ch Signal #2: ECD2B.ch
 Acq On : 02 Oct 2025 15:43
 Operator : AR\AJ
 Sample : Q3256-04
 Misc :
 ALS Vial : 8 Sample Multiplier: 1

Instrument :
 ECD_D
 ClientSampleId :
 SOIL-PILE-1-WC

Integration File signal 1: autoint1.e
 Integration File signal 2: autoint2.e
 Quant Time: Oct 03 02:45:24 2025
 Quant Method : Z:\pestpcbsrv\HPCHEM1\ECD_D\Method\PD091825.M
 Quant Title : GC Extractables
 QLast Update : Fri Sep 19 05:52:38 2025
 Response via : Initial Calibration
 Integrator: ChemStation

Volume Inj. : 1 µl
 Signal #1 Phase : ZB-MR2 Signal #2 Phase: ZB-MR2
 Signal #1 Info : 30M x 0.32mm x0.5 Signal #2 Info : 30M x 0.32mm x 0.25µm

Compound	RT#1	RT#2	Resp#1	Resp#2	ng/ml	ng/ml
System Monitoring Compounds						
1) SA Tetrachlo...	3.546	2.875	47308964	381.2E6	14.555	13.887
28) SA Decachlor...	9.061	8.059	85715004	523.1E6	17.765	16.139
Target Compounds						
2) A alpha-BHC	0.000	3.381	0	2159418	N.D.	0.049 #
4) MA Heptachlor	4.909f	4.074	1183556	1159794	0.179	0.028 #
5) MB Aldrin	0.000	4.368	0	620846	N.D.	0.016 #
6) B beta-BHC	0.000	4.017	0	3140000	N.D.	0.181 #
7) B delta-BHC	4.772	4.243	3239379	831363	0.502	0.020 #
8) B Heptachlo...	0.000	4.888f	0	21079848	N.D.	0.572 #
9) A Endosulfan I	0.000	5.269f	0	1457852	N.D.	0.042 #
10) B gamma-Chl...	0.000	5.113	0	520741	N.D.	0.013 #
12) B 4,4'-DDE	0.000	5.363	0	719782	N.D.	0.019 #
13) MA Dieldrin	0.000	5.504	0	1296333	N.D.	0.033 #
14) MA Endrin	0.000	5.784	0	6522552	N.D.	0.182 #
15) B Endosulfa...	6.766f	6.091f	1226456	3250463	0.251	0.096 #
17) MA 4,4'-DDT	0.000	6.181	0	948381	N.D.	0.028 #
18) B Endrin al...	6.924	6.245	463012	3290800	0.135	0.140
19) B Endosulfa...	0.000	6.488	0	265406	N.D.	0.008 #
20) A Methoxychlor	0.000	6.753	0	571397	N.D.	0.033 #
22) Mirex	8.125f	7.157f	1226060	1062523	0.331	0.038 #
23) Chlordane-1	0.000	3.898	0	1993955	N.D.	1.657 #
24) Chlordane-2	0.000	4.491	0	731461	N.D.	0.585 #
25) Chlordane-3	0.000	5.113	0	520741	N.D.	0.137 #
26) Chlordane-4	0.000	5.192	0	827807	N.D.	0.254 #
27) Chlordane-5	0.000	6.091	0	3250463	N.D.	2.142 #

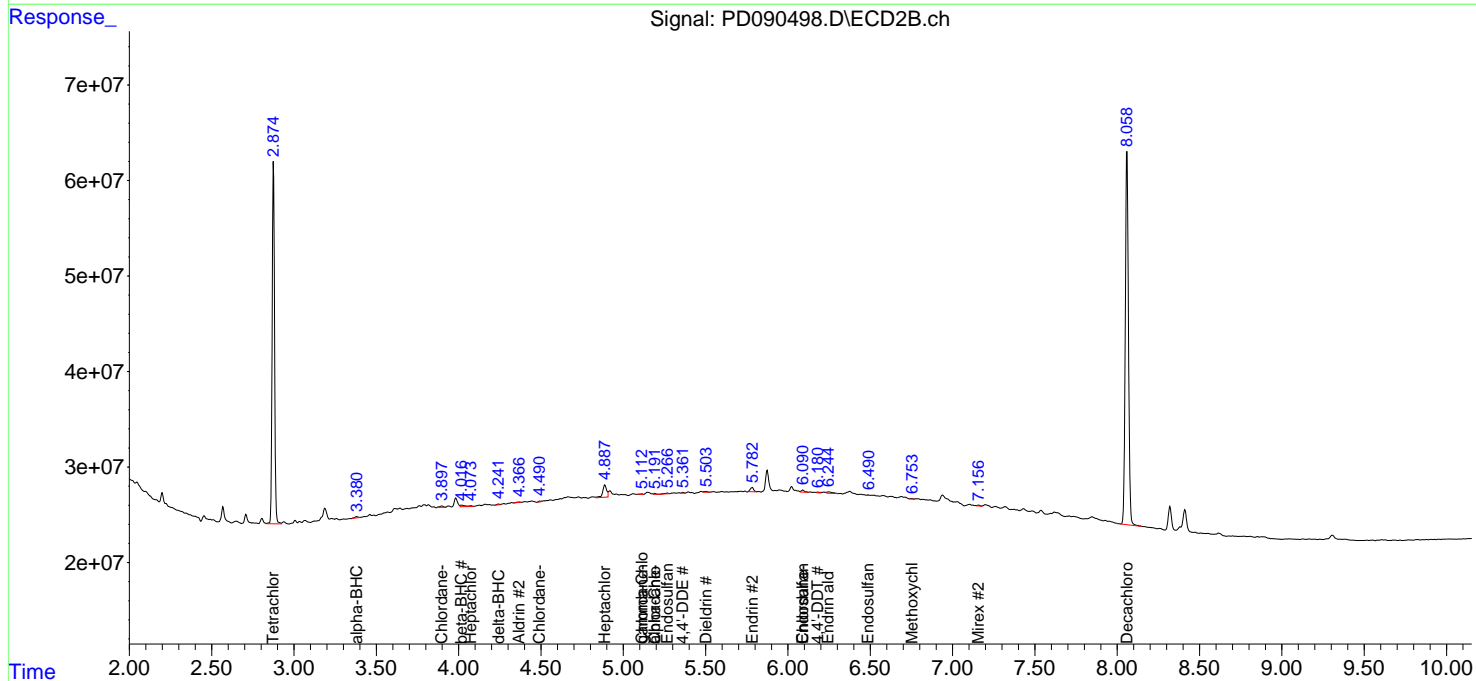
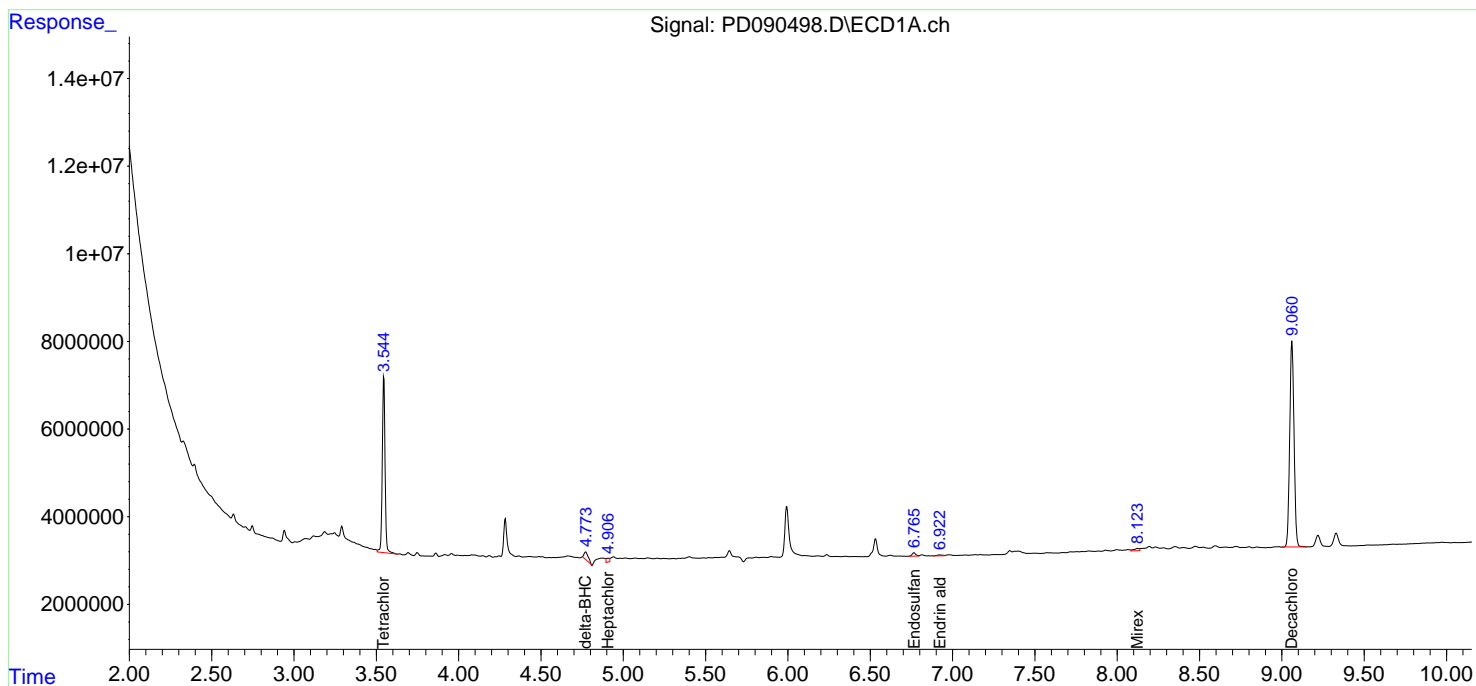
(f)=RT Delta > 1/2 Window (#)=Amounts differ by > 25% (m)=manual int.

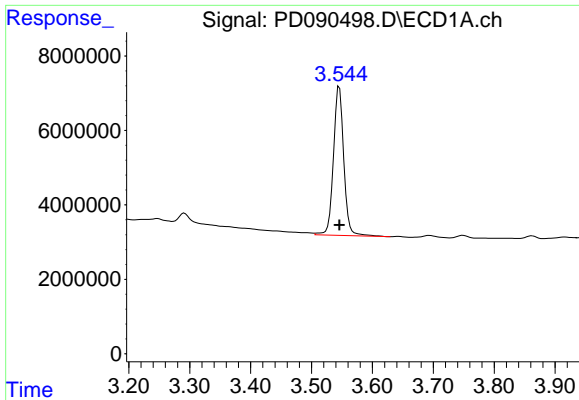
Data Path : Z:\pestpcbsrv\HPCHEM1\ECD_D\Data\PD100325\
 Data File : PD090498.D
 Signal(s) : Signal #1: ECD1A.ch Signal #2: ECD2B.ch
 Acq On : 02 Oct 2025 15:43
 Operator : AR\AJ
 Sample : Q3256-04
 Misc :
 ALS Vial : 8 Sample Multiplier: 1

Instrument :
 ECD_D
 ClientSampleId :
 SOIL-PILE-1-WC

Integration File signal 1: autoint1.e
 Integration File signal 2: autoint2.e
 Quant Time: Oct 03 02:45:24 2025
 Quant Method : Z:\pestpcbsrv\HPCHEM1\ECD_D\Method\PD091825.M
 Quant Title : GC Extractables
 QLast Update : Fri Sep 19 05:52:38 2025
 Response via : Initial Calibration
 Integrator: ChemStation

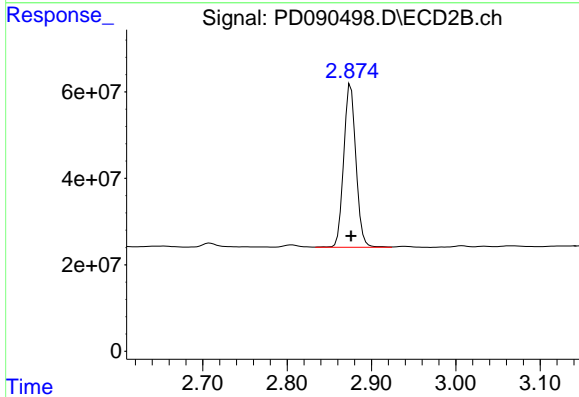
Volume Inj. : 1 µl
 Signal #1 Phase : ZB-MR1 Signal #2 Phase: ZB-MR2
 Signal #1 Info : 30M x 0.32mm x0.5 Signal #2 Info : 30M x 0.32mm x 0.25µm



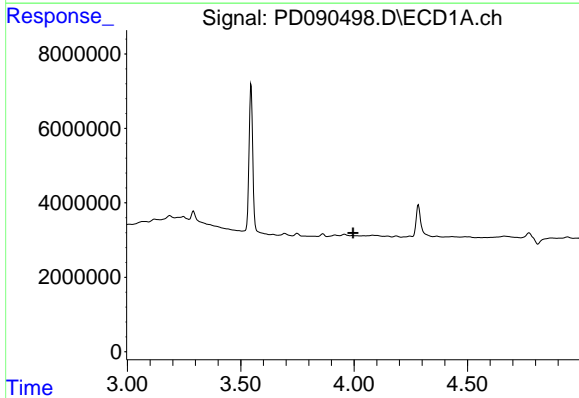


#1 Tetrachloro-m-xylene
 R.T.: 3.546 min
 Delta R.T.: 0.000 min
 Response: 47308964
 Conc: 14.55 ng/ml

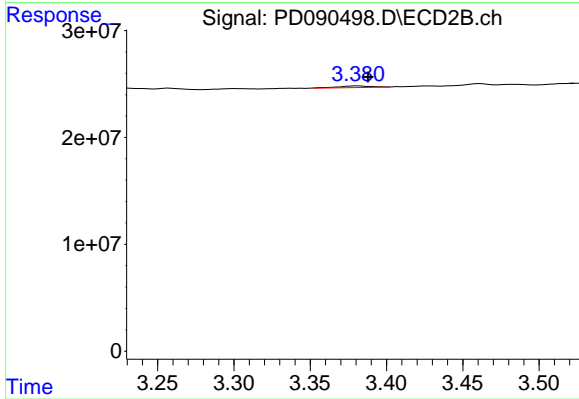
Instrument :
 ECD_D
 ClientSampleId :
 SOIL-PILE-1-WC



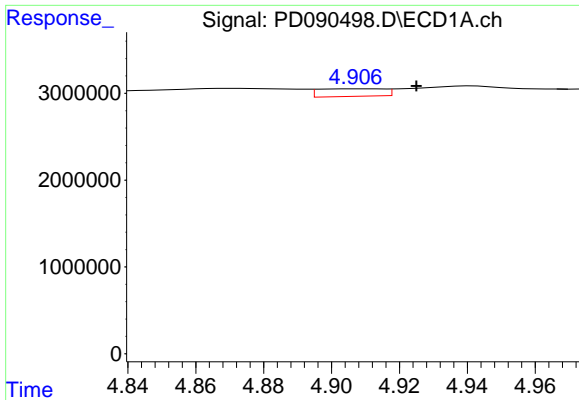
#1 Tetrachloro-m-xylene
 R.T.: 2.875 min
 Delta R.T.: 0.000 min
 Response: 381209432
 Conc: 13.89 ng/ml



#2 alpha-BHC
 R.T.: 0.000 min
 Exp R.T. : 3.995 min
 Response: 0
 Conc: N.D.



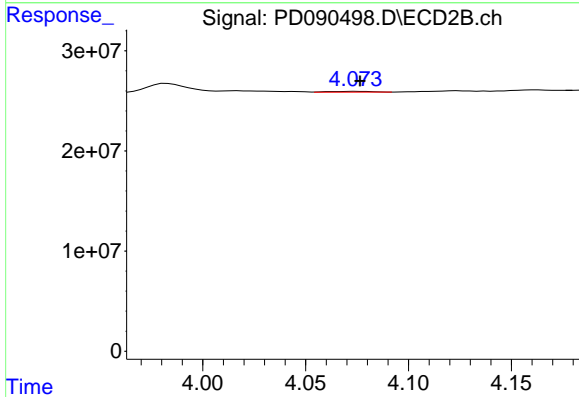
#2 alpha-BHC
 R.T.: 3.381 min
 Delta R.T.: -0.007 min
 Response: 2159418
 Conc: 0.05 ng/ml



#4 Heptachlor

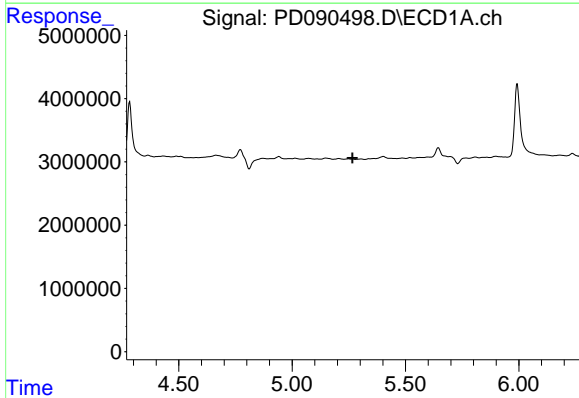
R.T.: 4.909 min
 Delta R.T.: -0.016 min
 Response: 1183556
 Conc: 0.18 ng/ml

Instrument :
 ECD_D
 ClientSampleId :
 SOIL-PILE-1-WC



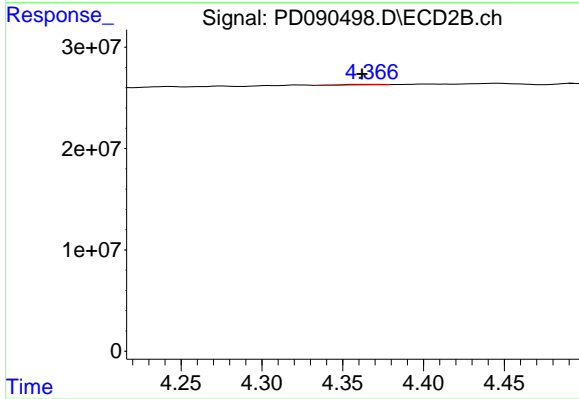
#4 Heptachlor

R.T.: 4.074 min
 Delta R.T.: -0.002 min
 Response: 1159794
 Conc: 0.03 ng/ml



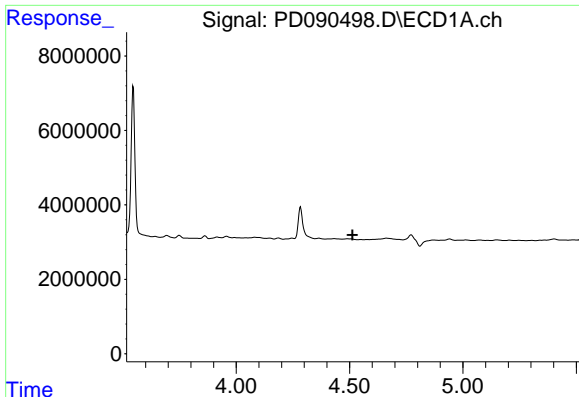
#5 Aldrin

R.T.: 0.000 min
 Exp R.T. : 5.266 min
 Response: 0
 Conc: N.D.



#5 Aldrin

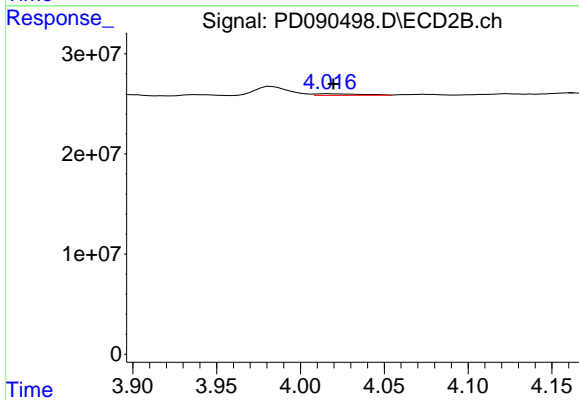
R.T.: 4.368 min
 Delta R.T.: 0.006 min
 Response: 620846
 Conc: 0.02 ng/ml



#6 beta-BHC

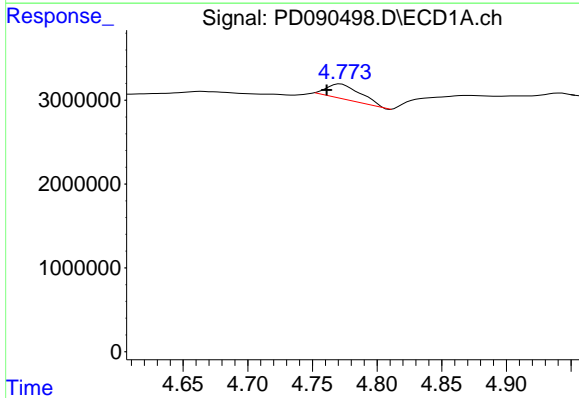
R.T.: 0.000 min
 Exp R.T.: 4.513 min
 Response: 0
 Conc: N.D.

Instrument :
 ECD_D
 ClientSampleId :
 SOIL-PILE-1-WC



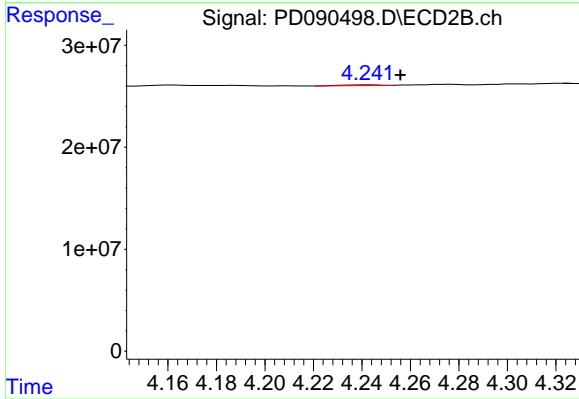
#6 beta-BHC

R.T.: 4.017 min
 Delta R.T.: -0.003 min
 Response: 3140000
 Conc: 0.18 ng/ml



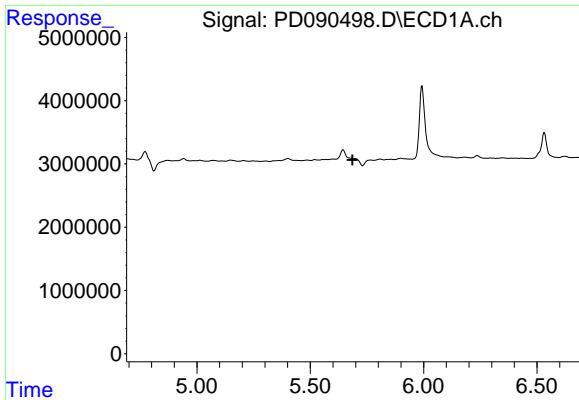
#7 delta-BHC

R.T.: 4.772 min
 Delta R.T.: 0.011 min
 Response: 3239379
 Conc: 0.50 ng/ml



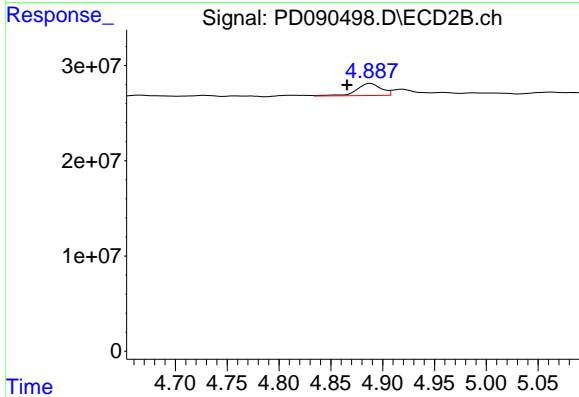
#7 delta-BHC

R.T.: 4.243 min
 Delta R.T.: -0.013 min
 Response: 831363
 Conc: 0.02 ng/ml

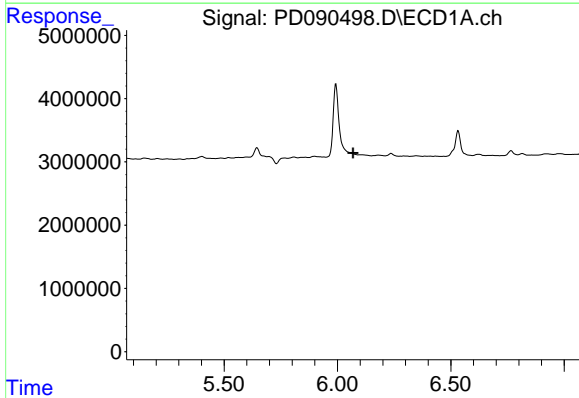


#8 Heptachlor epoxide
 R.T.: 0.000 min
 Exp R.T.: 5.686 min
 Response: 0
 Conc: N.D.

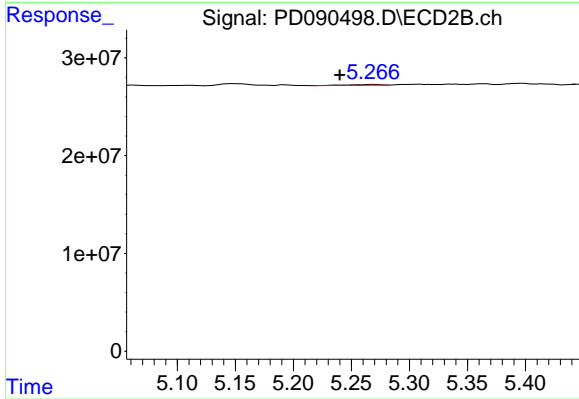
Instrument : ECD_D
 ClientSampleId : SOIL-PILE-1-WC



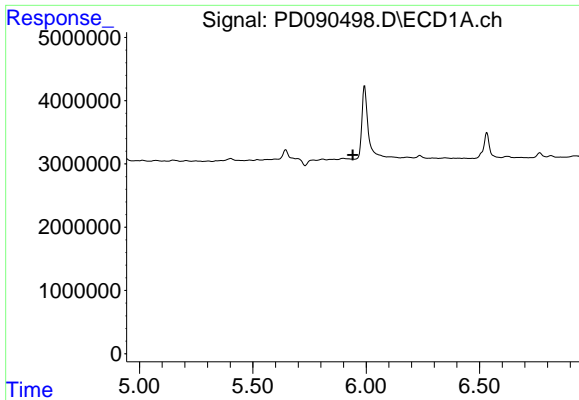
#8 Heptachlor epoxide
 R.T.: 4.888 min
 Delta R.T.: 0.023 min
 Response: 21079848
 Conc: 0.57 ng/ml



#9 Endosulfan I
 R.T.: 0.000 min
 Exp R.T.: 6.070 min
 Response: 0
 Conc: N.D.



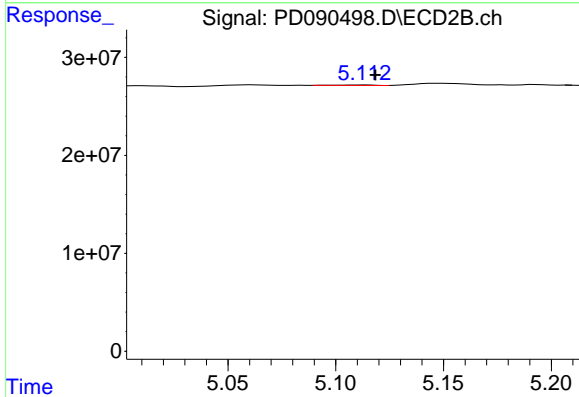
#9 Endosulfan I
 R.T.: 5.269 min
 Delta R.T.: 0.029 min
 Response: 1457852
 Conc: 0.04 ng/ml



#10 gamma-Chlordane

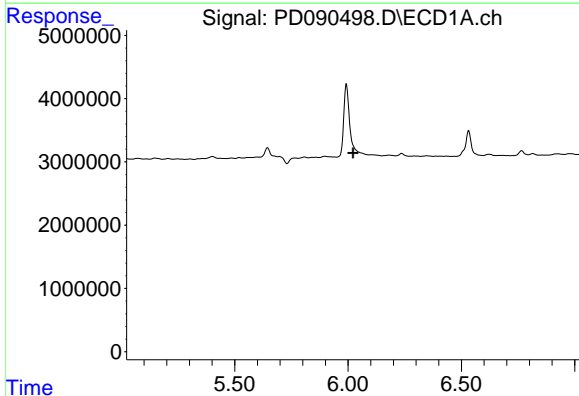
R.T.: 0.000 min
 Exp R.T.: 5.942 min
 Response: 0
 Conc: N.D.

Instrument :
 ECD_D
 ClientSampleId :
 SOIL-PILE-1-WC



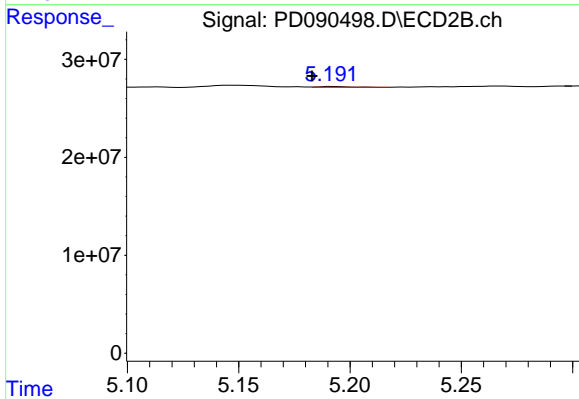
#10 gamma-Chlordane

R.T.: 5.113 min
 Delta R.T.: -0.005 min
 Response: 520741
 Conc: 0.01 ng/ml



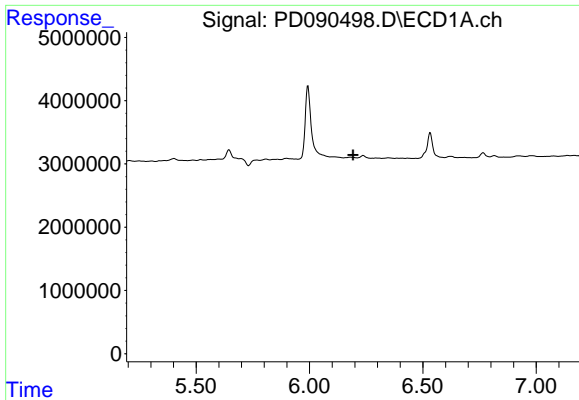
#11 alpha-Chlordane

R.T.: 5.993 min
 Delta R.T.: -0.029 min
 Response: -2572169
 Conc: N.D.



#11 alpha-Chlordane

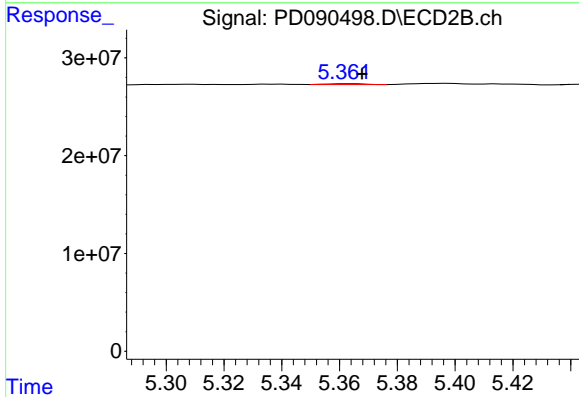
R.T.: 5.192 min
 Delta R.T.: 0.009 min
 Response: 827807
 Conc: 0.02 ng/ml



#12 4,4'-DDE

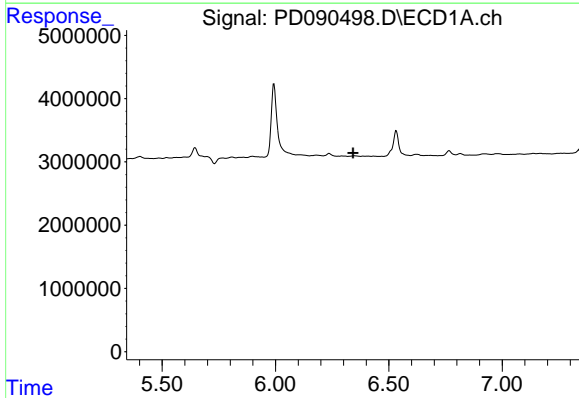
R.T.: 0.000 min
 Exp R.T. : 6.192 min
 Response: 0
 Conc: N.D.

Instrument :
 ECD_D
 ClientSampleId :
 SOIL-PILE-1-WC



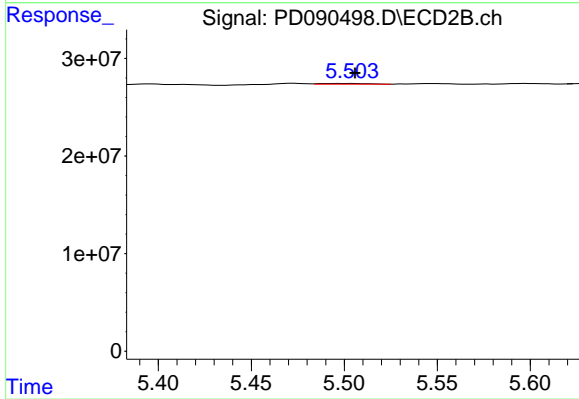
#12 4,4'-DDE

R.T.: 5.363 min
 Delta R.T.: -0.005 min
 Response: 719782
 Conc: 0.02 ng/ml



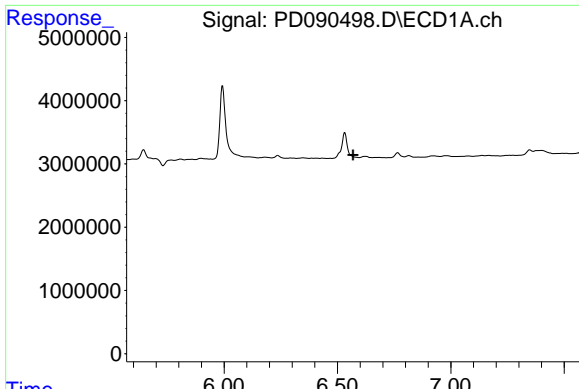
#13 Dieldrin

R.T.: 0.000 min
 Exp R.T. : 6.343 min
 Response: 0
 Conc: N.D.



#13 Dieldrin

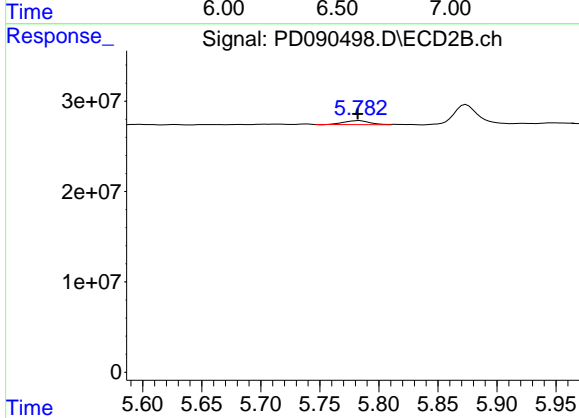
R.T.: 5.504 min
 Delta R.T.: -0.002 min
 Response: 1296333
 Conc: 0.03 ng/ml



#14 Endrin

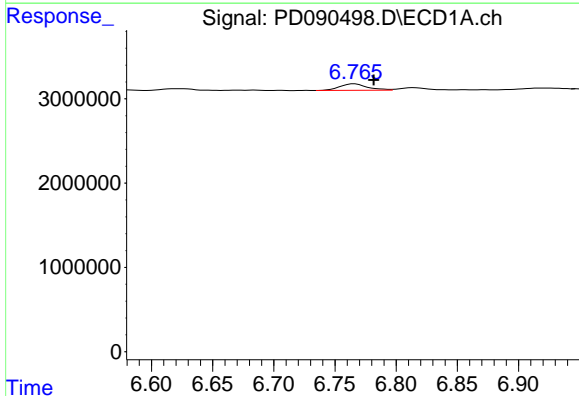
R.T.: 0.000 min
 Exp R.T.: 6.569 min
 Response: 0
 Conc: N.D.

Instrument : ECD_D
 ClientSampleId : SOIL-PILE-1-WC



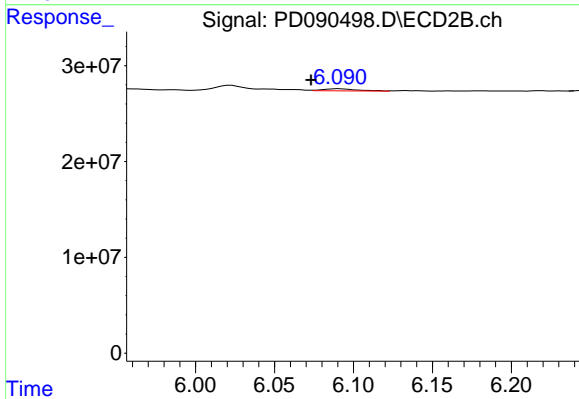
#14 Endrin

R.T.: 5.784 min
 Delta R.T.: 0.002 min
 Response: 6522552
 Conc: 0.18 ng/ml



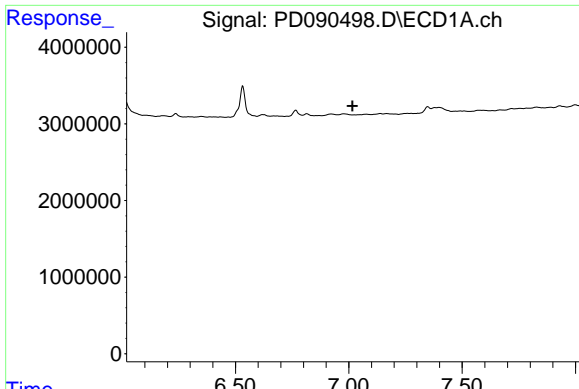
#15 Endosulfan II

R.T.: 6.766 min
 Delta R.T.: -0.015 min
 Response: 1226456
 Conc: 0.25 ng/ml



#15 Endosulfan II

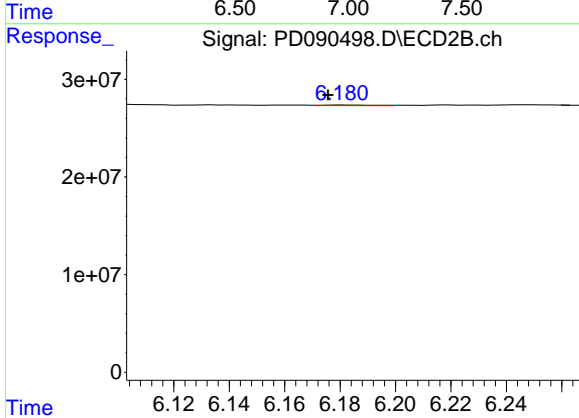
R.T.: 6.091 min
 Delta R.T.: 0.018 min
 Response: 3250463
 Conc: 0.10 ng/ml



#17 4,4'-DDT

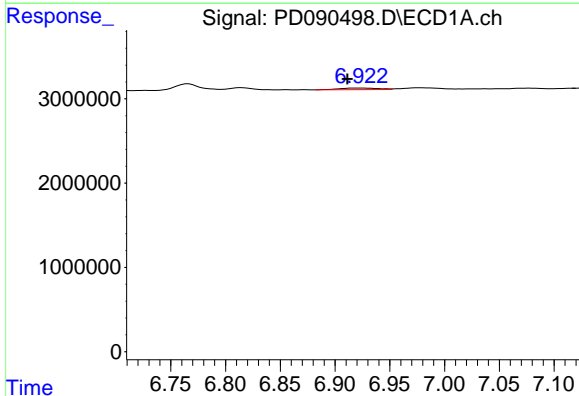
R.T.: 0.000 min
 Exp R.T.: 7.017 min
 Response: 0
 Conc: N.D.

Instrument :
 ECD_D
 ClientSampleId :
 SOIL-PILE-1-WC



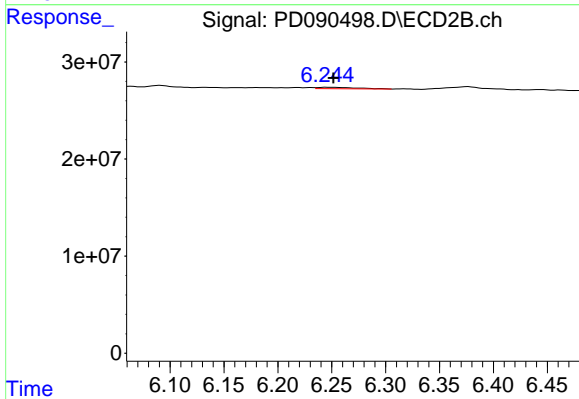
#17 4,4'-DDT

R.T.: 6.181 min
 Delta R.T.: 0.005 min
 Response: 948381
 Conc: 0.03 ng/ml



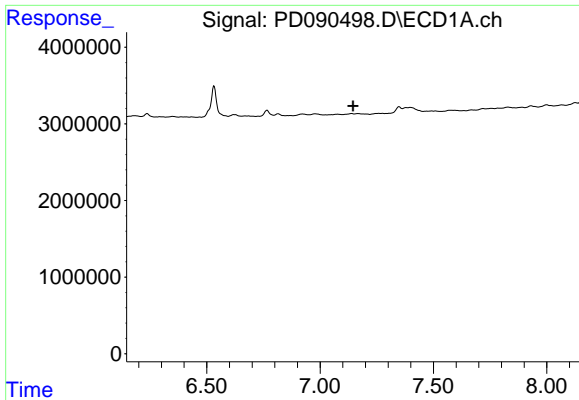
#18 Endrin aldehyde

R.T.: 6.924 min
 Delta R.T.: 0.013 min
 Response: 463012
 Conc: 0.13 ng/ml



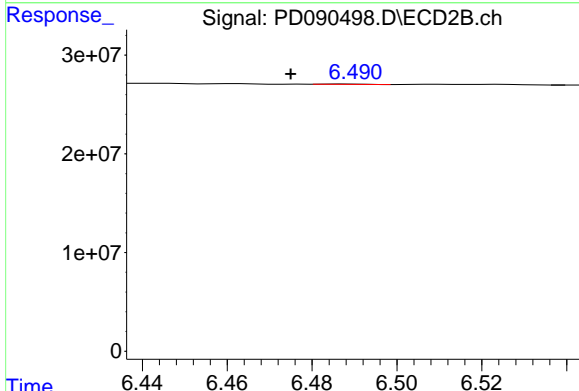
#18 Endrin aldehyde

R.T.: 6.245 min
 Delta R.T.: -0.006 min
 Response: 3290800
 Conc: 0.14 ng/ml

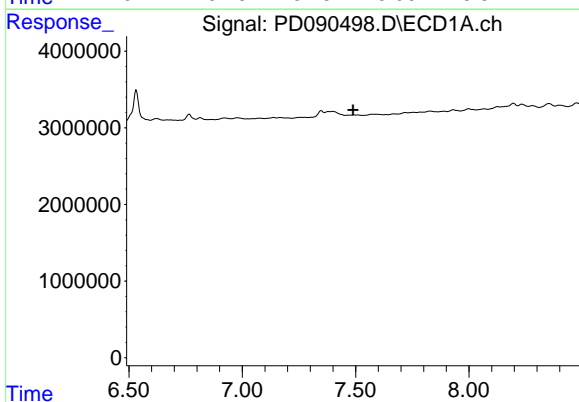


#19 Endosulfan Sulfate
 R.T.: 0.000 min
 Exp R.T.: 7.146 min
 Response: 0
 Conc: N.D.

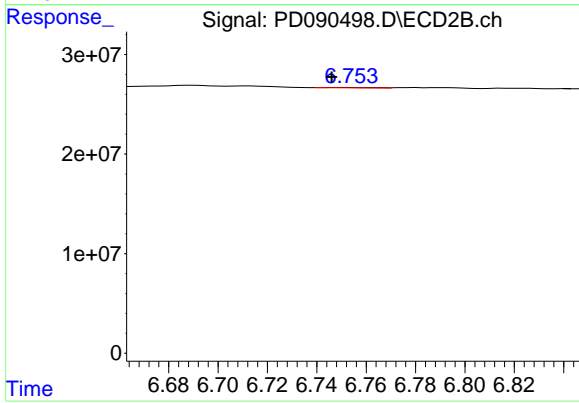
Instrument :
 ECD_D
 ClientSampleId :
 SOIL-PILE-1-WC



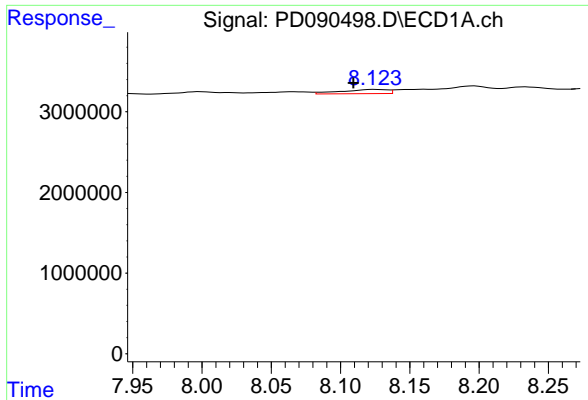
#19 Endosulfan Sulfate
 R.T.: 6.488 min
 Delta R.T.: 0.013 min
 Response: 265406
 Conc: 0.01 ng/ml



#20 Methoxychlor
 R.T.: 0.000 min
 Exp R.T.: 7.490 min
 Response: 0
 Conc: N.D.

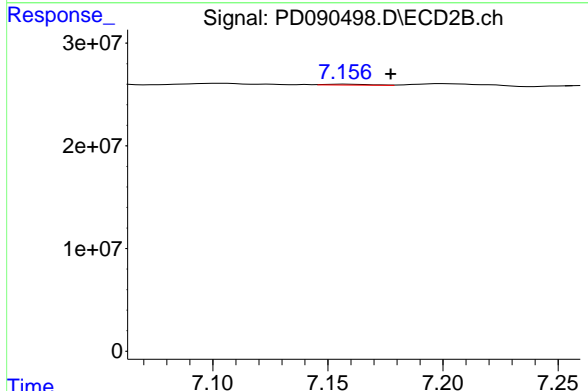


#20 Methoxychlor
 R.T.: 6.753 min
 Delta R.T.: 0.007 min
 Response: 571397
 Conc: 0.03 ng/ml

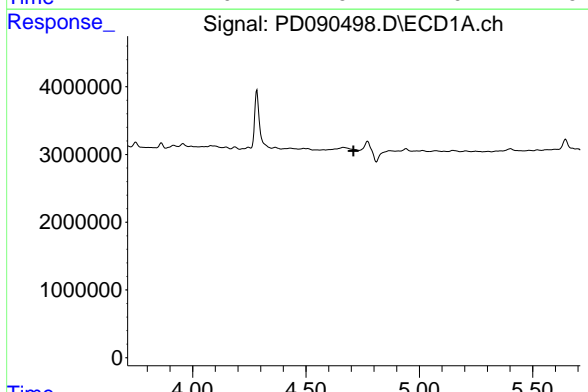


#22 Mirex
 R.T.: 8.125 min
 Delta R.T.: 0.016 min
 Response: 1226060
 Conc: 0.33 ng/ml

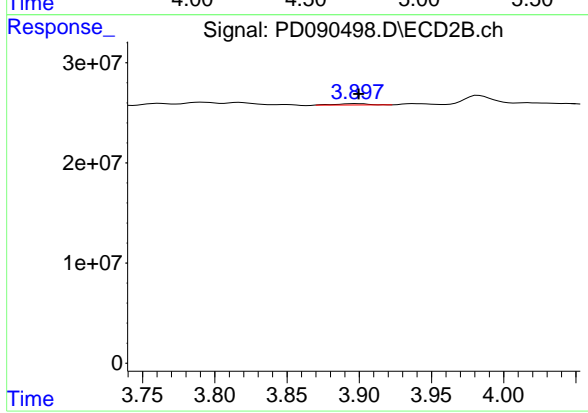
Instrument : ECD_D
 ClientSampleId : SOIL-PILE-1-WC



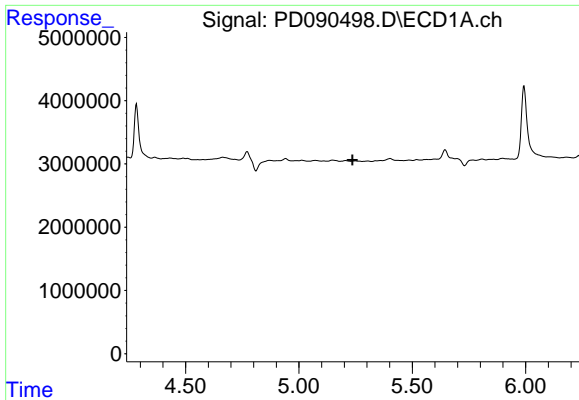
#22 Mirex
 R.T.: 7.157 min
 Delta R.T.: -0.020 min
 Response: 1062523
 Conc: 0.04 ng/ml



#23 Chlordane-1
 R.T.: 0.000 min
 Exp R.T. : 4.710 min
 Response: 0
 Conc: N.D.



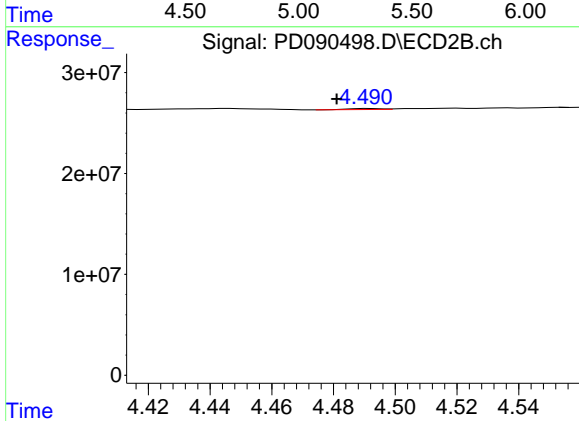
#23 Chlordane-1
 R.T.: 3.898 min
 Delta R.T.: -0.001 min
 Response: 1993955
 Conc: 1.66 ng/ml



#24 Chlordane-2

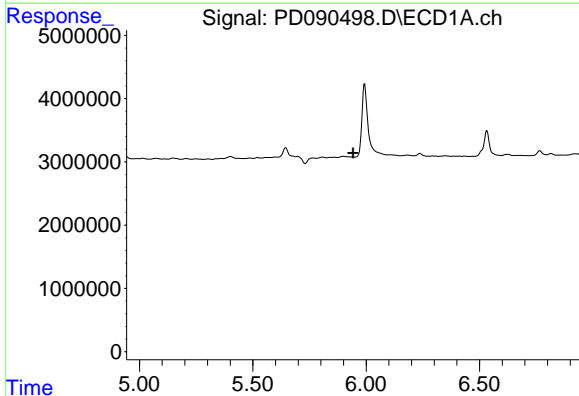
R.T.: 0.000 min
 Exp R.T.: 5.237 min
 Response: 0
 Conc: N.D.

Instrument :
 ECD_D
 ClientSampleId :
 SOIL-PILE-1-WC



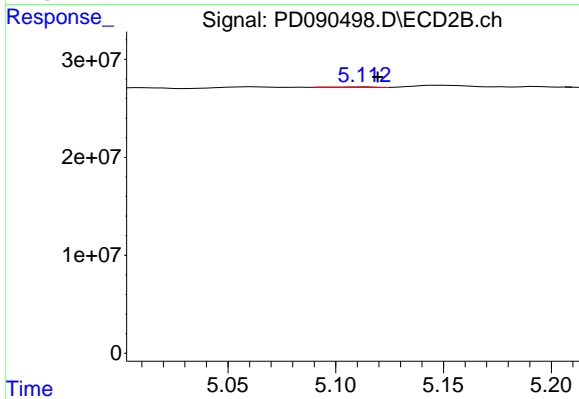
#24 Chlordane-2

R.T.: 4.491 min
 Delta R.T.: 0.010 min
 Response: 731461
 Conc: 0.58 ng/ml



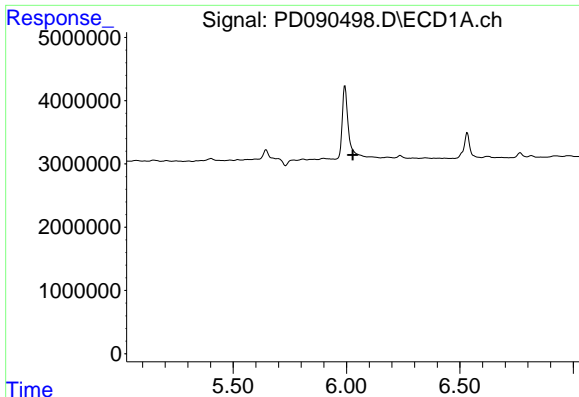
#25 Chlordane-3

R.T.: 0.000 min
 Exp R.T.: 5.942 min
 Response: 0
 Conc: N.D.



#25 Chlordane-3

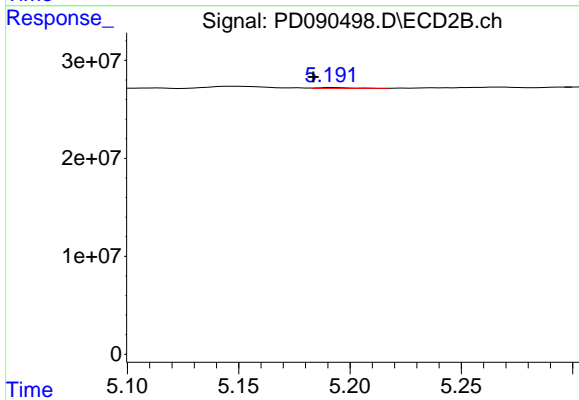
R.T.: 5.113 min
 Delta R.T.: -0.006 min
 Response: 520741
 Conc: 0.14 ng/ml



#26 Chlordane-4

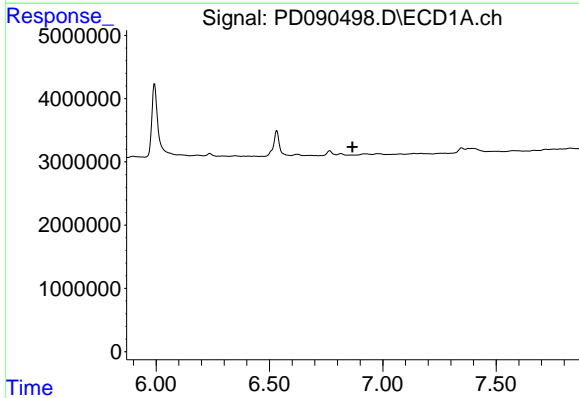
R.T.: 0.000 min
 Exp R.T. : 6.027 min
 Response: 0
 Conc: N.D.

Instrument :
 ECD_D
 ClientSampleId :
 SOIL-PILE-1-WC



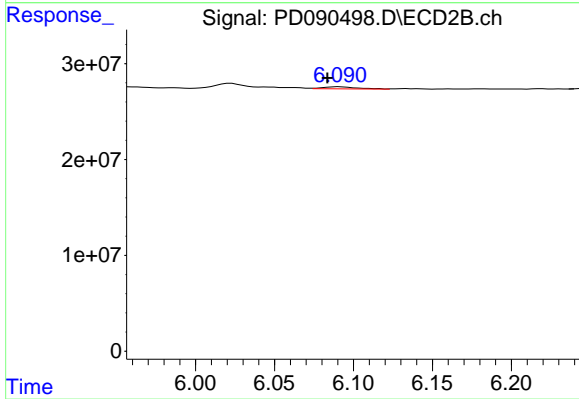
#26 Chlordane-4

R.T.: 5.192 min
 Delta R.T.: 0.009 min
 Response: 827807
 Conc: 0.25 ng/ml



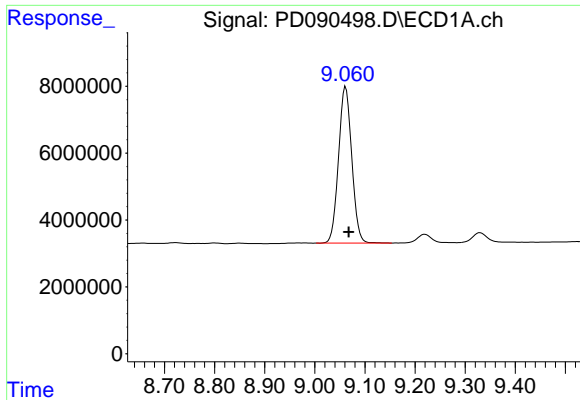
#27 Chlordane-5

R.T.: 0.000 min
 Exp R.T. : 6.867 min
 Response: 0
 Conc: N.D.



#27 Chlordane-5

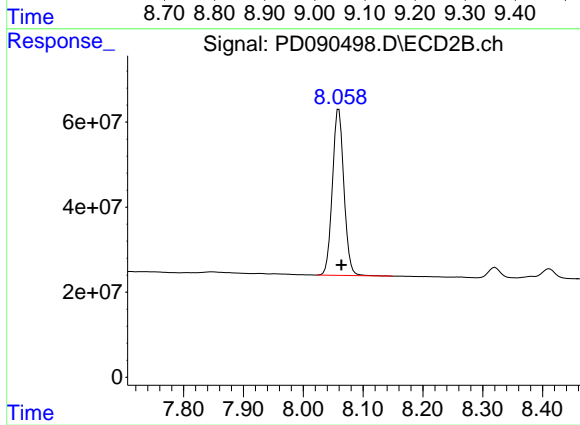
R.T.: 6.091 min
 Delta R.T.: 0.008 min
 Response: 3250463
 Conc: 2.14 ng/ml



#28 Decachlorobiphenyl

R.T.: 9.061 min
Delta R.T.: -0.006 min
Response: 85715004
Conc: 17.76 ng/ml

Instrument :
ECD_D
ClientSampleId :
SOIL-PILE-1-WC



#28 Decachlorobiphenyl

R.T.: 8.059 min
Delta R.T.: -0.004 min
Response: 523127528
Conc: 16.14 ng/ml