

Data Path : Z:\pestpcbsrv\HPCHEM1\ECD_D\Data\PD100325\
 Data File : PD090499.D
 Signal(s) : Signal #1: ECD1A.ch Signal #2: ECD2B.ch
 Acq On : 02 Oct 2025 15:57
 Operator : AR\AJ
 Sample : Q3256-04MS
 Misc :
 ALS Vial : 9 Sample Multiplier: 1

Instrument :
 ECD_D
 ClientSampleId :
 SOIL-PILE-1-WCMS

Integration File signal 1: autoint1.e
 Integration File signal 2: autoint2.e
 Quant Time: Oct 03 02:45:34 2025
 Quant Method : Z:\pestpcbsrv\HPCHEM1\ECD_D\Method\PD091825.M
 Quant Title : GC Extractables
 QLast Update : Fri Sep 19 05:52:38 2025
 Response via : Initial Calibration
 Integrator: ChemStation

Volume Inj. : 1 µl
 Signal #1 Phase : ZB-MR2 Signal #2 Phase: ZB-MR2
 Signal #1 Info : 30M x 0.32mm x0.5 Signal #2 Info : 30M x 0.32mm x 0.25µm

	Compound	RT#1	RT#2	Resp#1	Resp#2	ng/ml	ng/ml

System Monitoring Compounds							
1)	SA Tetrachlo...	3.546	2.876	45646479	356.2E6	14.043	12.975
28)	SA Decachlor...	9.062	8.059	81649951	491.5E6	16.922	15.162
Target Compounds							
2)	A alpha-BHC	3.995	3.387	249.8E6	1435.5E6	35.766	32.787
3)	MA gamma-BHC...	4.325	3.723	220.6E6	1337.9E6	33.341	32.843
4)	MA Heptachlor	4.923	4.075	239.1E6	1327.7E6	36.160	32.607
5)	MB Aldrin	5.264	4.360	225.0E6	1287.1E6	35.429	32.230
6)	B beta-BHC	4.511	4.019	91288159	569.5E6	35.384	32.849
7)	B delta-BHC	4.760	4.255	-31941795	1369.0E6	N.D.	33.152
8)	B Heptachlo...	5.684	4.864	211.0E6	1265.4E6	36.920	34.324
9)	A Endosulfan I	6.067	5.238	178.1E6	1174.2E6	32.968	33.932
10)	B gamma-Chl...	5.939	5.116	207.5E6	1304.7E6	36.335	33.209
11)	B alpha-Chl...	6.019	5.181	201.9E6	1254.6E6	35.051	33.309
12)	B 4,4'-DDE	6.189	5.365	191.6E6	1273.2E6	36.790	33.260
13)	MA Dieldrin	6.340	5.503	217.7E6	1314.2E6	37.770	33.744
14)	MA Endrin	6.566	5.779	187.1E6	1212.4E6	38.234	33.835
15)	B Endosulfa...	6.779	6.070	191.0E6	1157.1E6	39.152	34.285
16)	A 4,4'-DDD	6.698	5.919	154.2E6	1084.3E6	37.632	33.437
17)	MA 4,4'-DDT	7.014	6.172	173.0E6	1151.9E6	38.862	33.505
18)	B Endrin al...	6.908	6.248	141.9E6	878.7E6	41.361	37.316
19)	B Endosulfa...	7.142	6.472	177.8E6	1142.0E6	38.652	34.935
20)	A Methoxychlor	7.486	6.743	90998777	598.6E6	38.616	34.400
21)	B Endrin ke...	7.623	6.980	192.6E6	1237.1E6	38.939	34.267
22)	Mirex	8.105	7.173	141.4E6	920.3E6	38.172	33.338
23)	Chlordane-1	0.000	3.896	0	7505587	N.D.	6.236 #
24)	Chlordane-2	5.264f	4.498	225.0E6	6403582	1048.349	5.121 #
25)	Chlordane-3	5.939	5.116	207.5E6	1304.7E6	247.957	344.187 #
26)	Chlordane-4	6.019	5.181	201.9E6	1254.6E6	197.861	385.314 #
27)	Chlordane-5	0.000	6.070	0	1157.1E6	N.D.	762.475 #

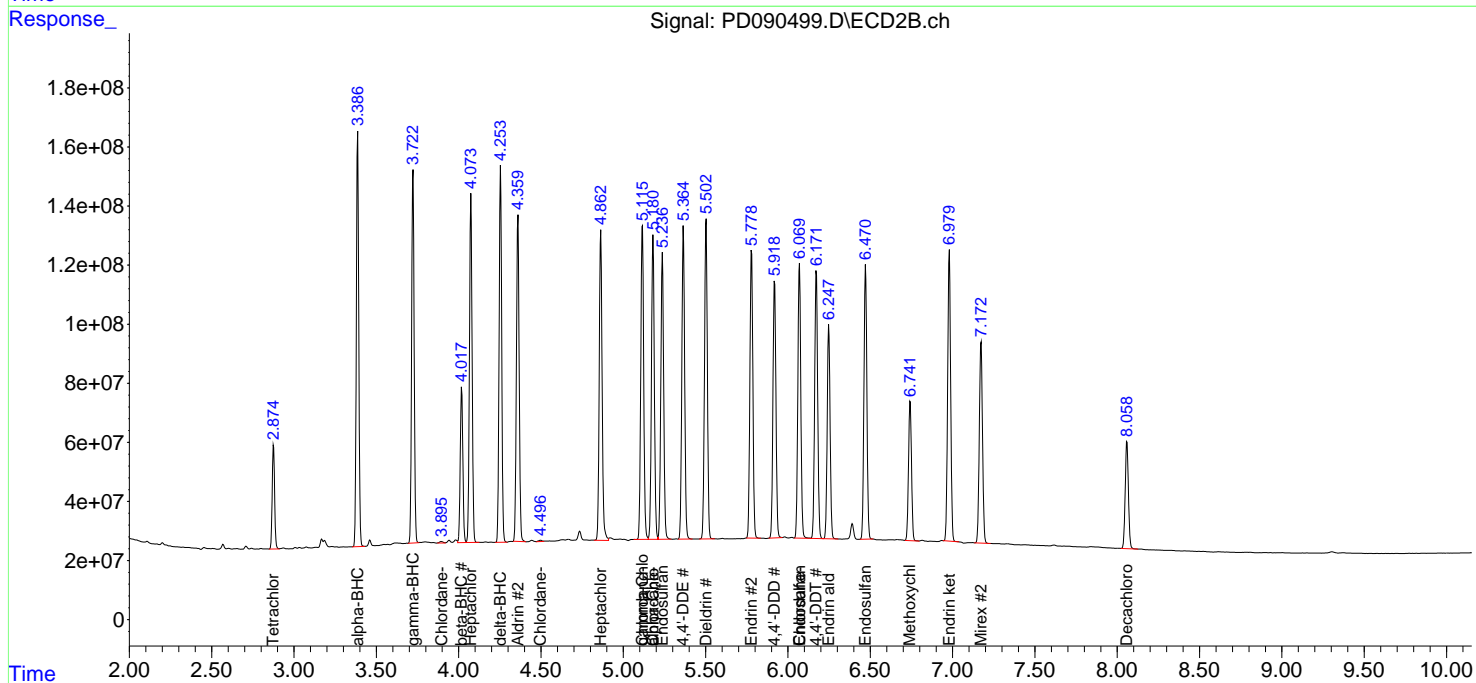
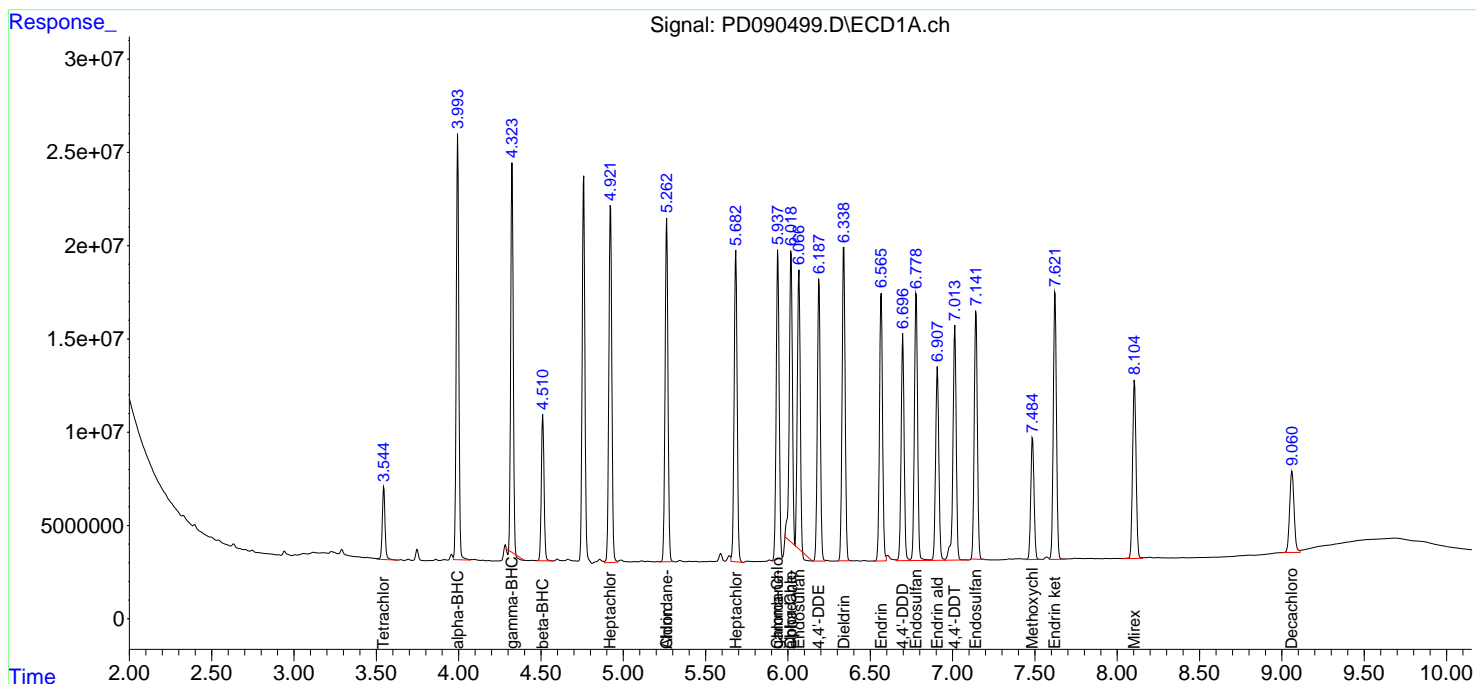
(f)=RT Delta > 1/2 Window (#)=Amounts differ by > 25% (m)=manual int.

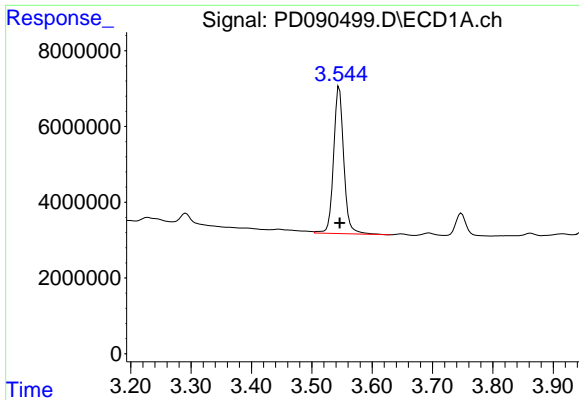
Data Path : Z:\pestpcbsrv\HPCHEM1\ECD_D\Data\PD100325\
 Data File : PD090499.D
 Signal(s) : Signal #1: ECD1A.ch Signal #2: ECD2B.ch
 Acq On : 02 Oct 2025 15:57
 Operator : AR\AJ
 Sample : Q3256-04MS
 Misc :
 ALS Vial : 9 Sample Multiplier: 1

Instrument :
 ECD_D
 ClientSampleId :
 SOIL-PILE-1-WCMS

Integration File signal 1: autoint1.e
 Integration File signal 2: autoint2.e
 Quant Time: Oct 03 02:45:34 2025
 Quant Method : Z:\pestpcbsrv\HPCHEM1\ECD_D\Method\PD091825.M
 Quant Title : GC Extractables
 QLast Update : Fri Sep 19 05:52:38 2025
 Response via : Initial Calibration
 Integrator: ChemStation

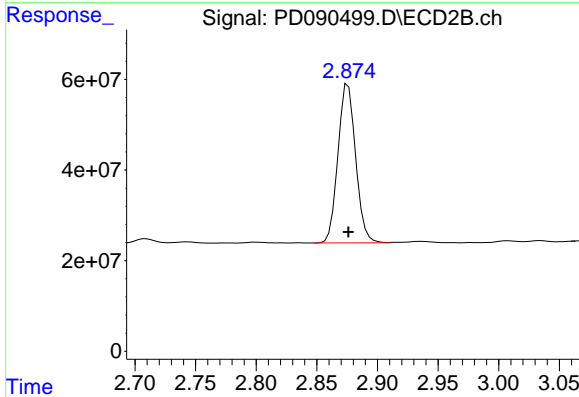
Volume Inj. : 1 µl
 Signal #1 Phase : ZB-MR1 Signal #2 Phase: ZB-MR2
 Signal #1 Info : 30M x 0.32mm x0.5 Signal #2 Info : 30M x 0.32mm x 0.25µm



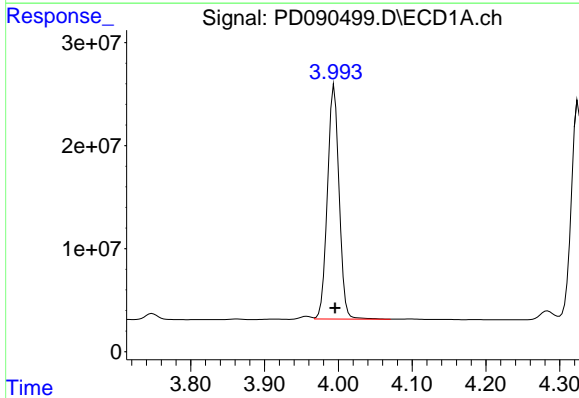


#1 Tetrachloro-m-xylene
 R.T.: 3.546 min
 Delta R.T.: 0.000 min
 Response: 45646479
 Conc: 14.04 ng/ml

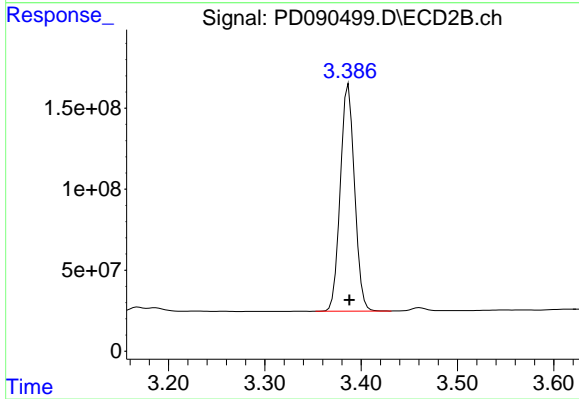
Instrument :
 ECD_D
 ClientSampleId :
 SOIL-PILE-1-WCMS



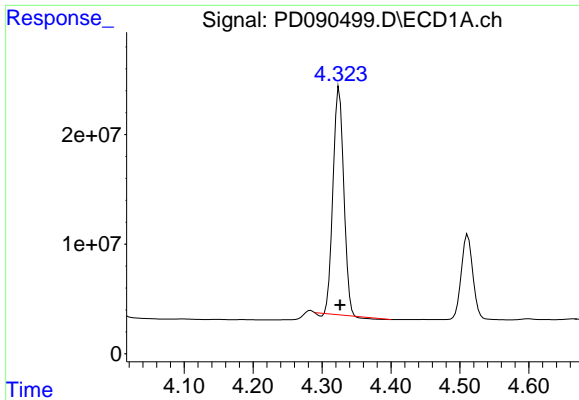
#1 Tetrachloro-m-xylene
 R.T.: 2.876 min
 Delta R.T.: 0.000 min
 Response: 356153265
 Conc: 12.97 ng/ml



#2 alpha-BHC
 R.T.: 3.995 min
 Delta R.T.: 0.000 min
 Response: 249809708
 Conc: 35.77 ng/ml

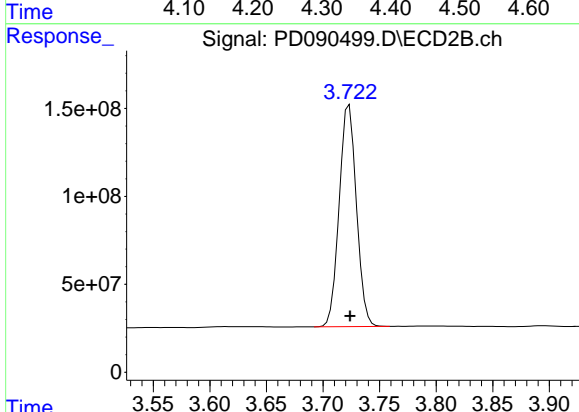


#2 alpha-BHC
 R.T.: 3.387 min
 Delta R.T.: 0.000 min
 Response: 1435533514
 Conc: 32.79 ng/ml

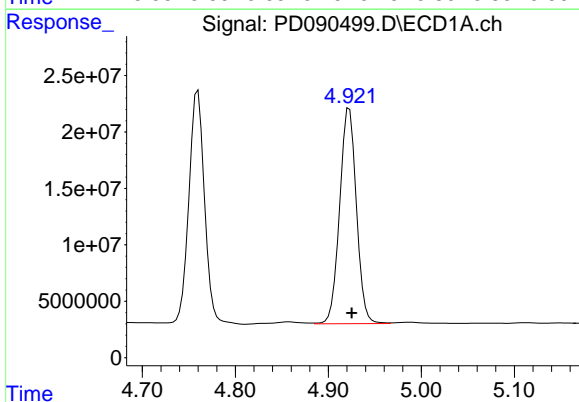


#3 gamma-BHC (Lindane)
 R.T.: 4.325 min
 Delta R.T.: -0.001 min
 Response: 220612931
 Conc: 33.34 ng/ml

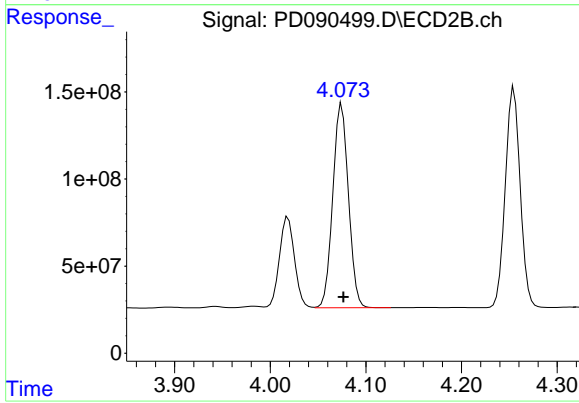
Instrument : ECD_D
 ClientSampleId : SOIL-PILE-1-WCMS



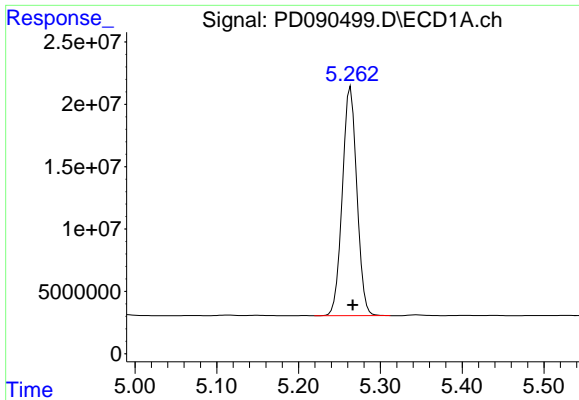
#3 gamma-BHC (Lindane)
 R.T.: 3.723 min
 Delta R.T.: 0.000 min
 Response: 1337864001
 Conc: 32.84 ng/ml



#4 Heptachlor
 R.T.: 4.923 min
 Delta R.T.: -0.002 min
 Response: 239113428
 Conc: 36.16 ng/ml



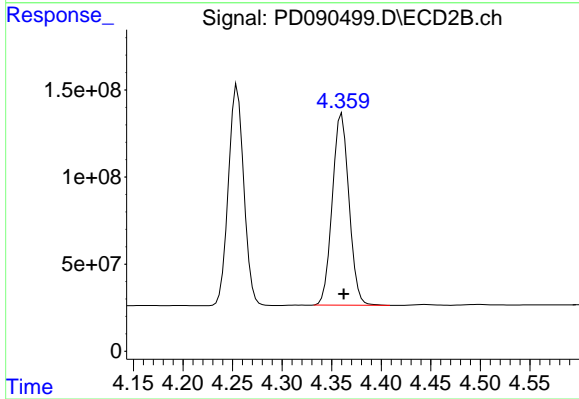
#4 Heptachlor
 R.T.: 4.075 min
 Delta R.T.: -0.002 min
 Response: 1327669840
 Conc: 32.61 ng/ml



#5 Aldrin

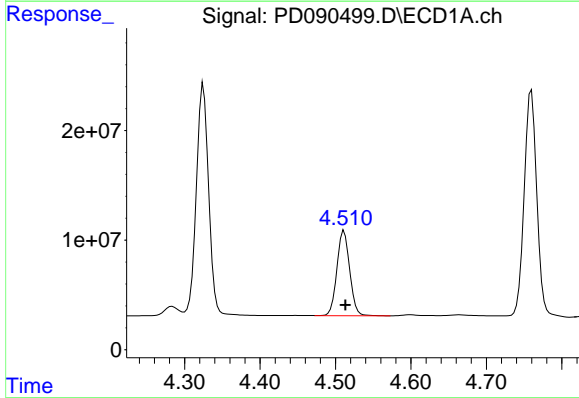
R.T.: 5.264 min
 Delta R.T.: -0.003 min
 Response: 224971055
 Conc: 35.43 ng/ml

Instrument :
 ECD_D
 ClientSampleId :
 SOIL-PILE-1-WCMS



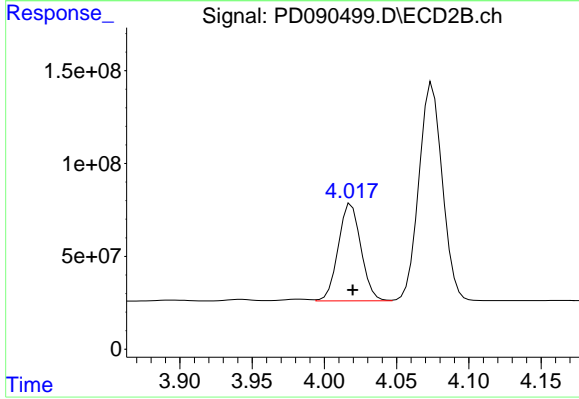
#5 Aldrin

R.T.: 4.360 min
 Delta R.T.: -0.002 min
 Response: 1287104868
 Conc: 32.23 ng/ml



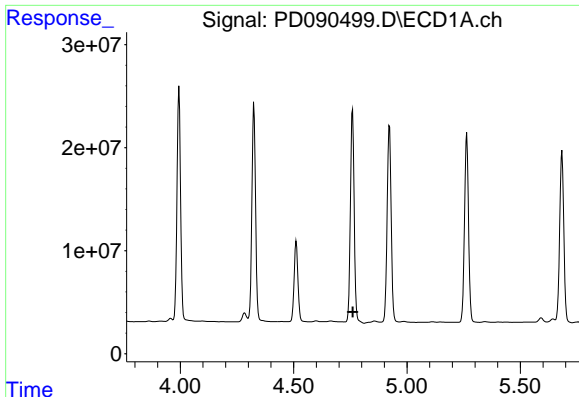
#6 beta-BHC

R.T.: 4.511 min
 Delta R.T.: -0.002 min
 Response: 91288159
 Conc: 35.38 ng/ml



#6 beta-BHC

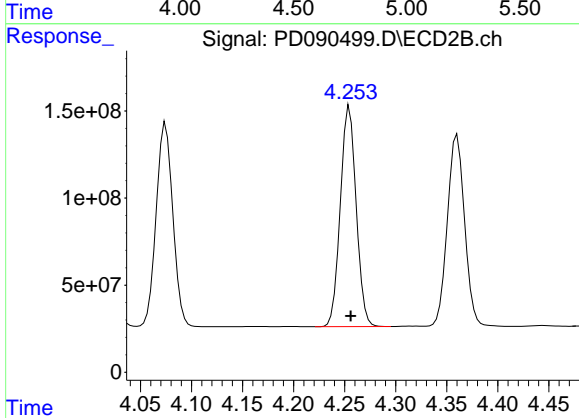
R.T.: 4.019 min
 Delta R.T.: -0.001 min
 Response: 569454018
 Conc: 32.85 ng/ml



#7 delta-BHC

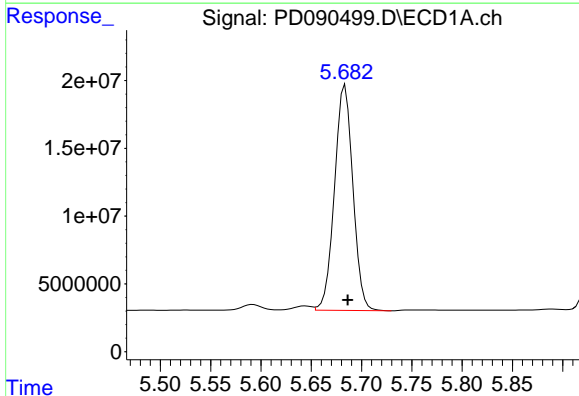
R.T.: 4.760 min
 Delta R.T.: -0.001 min
 Response: -31941795
 Conc: N.D.

Instrument :
 ECD_D
 ClientSampleId :
 SOIL-PILE-1-WCMS



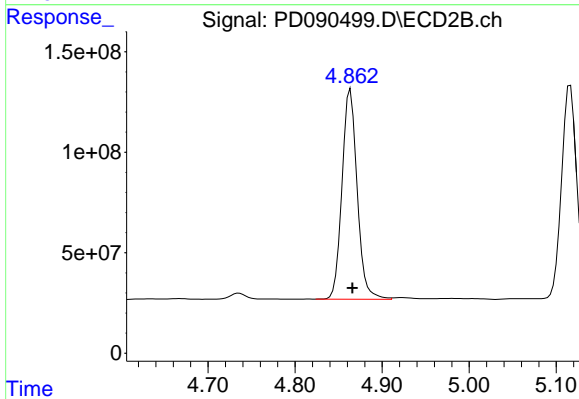
#7 delta-BHC

R.T.: 4.255 min
 Delta R.T.: -0.001 min
 Response: 1368992633
 Conc: 33.15 ng/ml



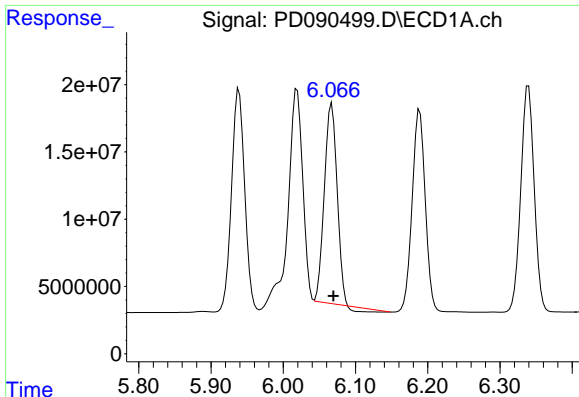
#8 Heptachlor epoxide

R.T.: 5.684 min
 Delta R.T.: -0.003 min
 Response: 210992748
 Conc: 36.92 ng/ml



#8 Heptachlor epoxide

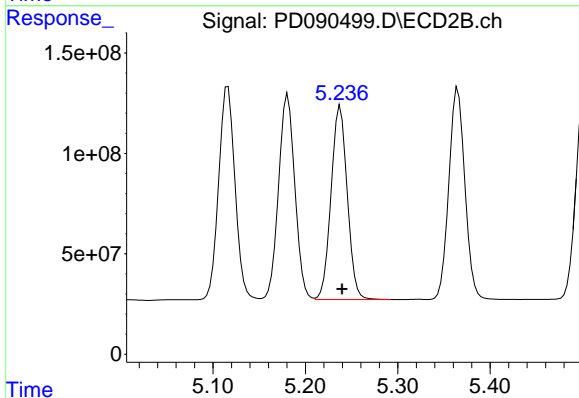
R.T.: 4.864 min
 Delta R.T.: -0.002 min
 Response: 1265356459
 Conc: 34.32 ng/ml



#9 Endosulfan I

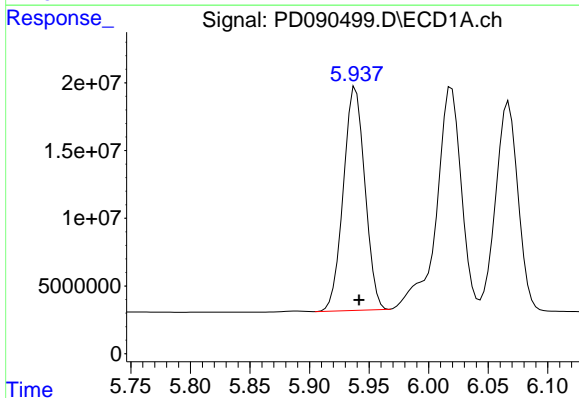
R.T.: 6.067 min
 Delta R.T.: -0.002 min
 Response: 178076506
 Conc: 32.97 ng/ml

Instrument :
 ECD_D
 ClientSampleId :
 SOIL-PILE-1-WCMS



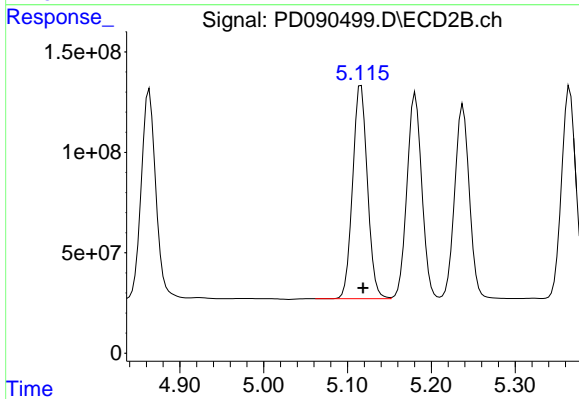
#9 Endosulfan I

R.T.: 5.238 min
 Delta R.T.: -0.002 min
 Response: 1174223855
 Conc: 33.93 ng/ml



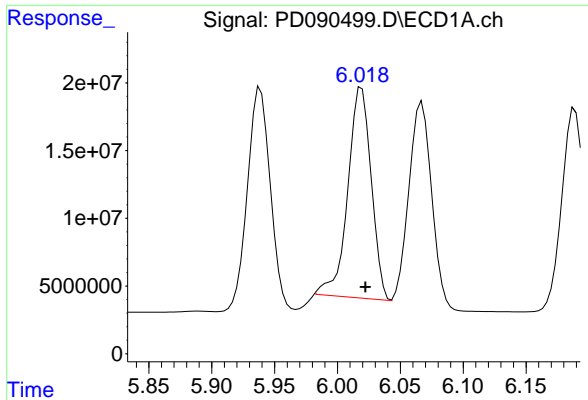
#10 gamma-Chlordane

R.T.: 5.939 min
 Delta R.T.: -0.003 min
 Response: 207543112
 Conc: 36.33 ng/ml



#10 gamma-Chlordane

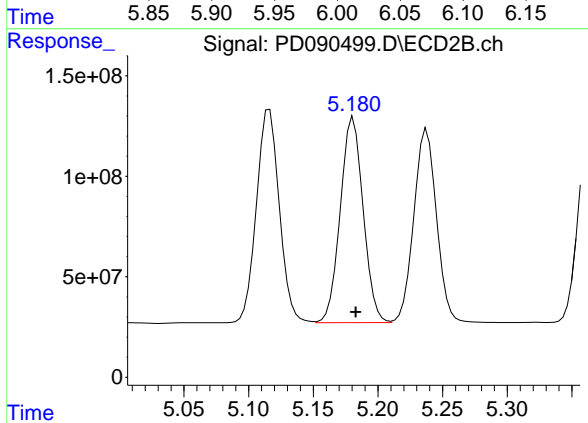
R.T.: 5.116 min
 Delta R.T.: -0.002 min
 Response: 1304664389
 Conc: 33.21 ng/ml



#11 alpha-Chlordane

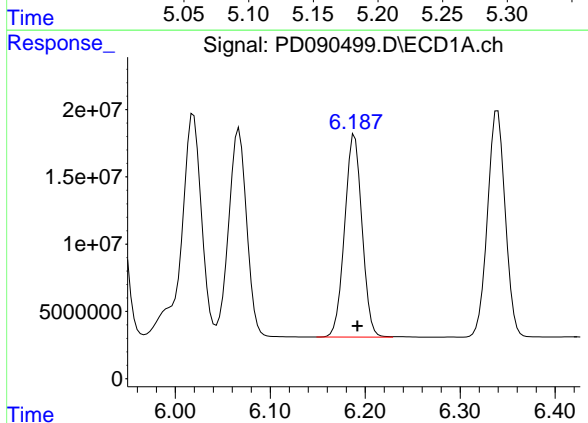
R.T.: 6.019 min
 Delta R.T.: -0.003 min
 Response: 201925165
 Conc: 35.05 ng/ml

Instrument :
 ECD_D
 ClientSampleId :
 SOIL-PILE-1-WCMS



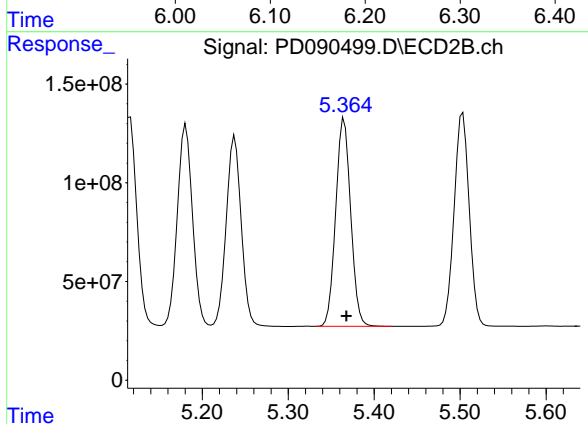
#11 alpha-Chlordane

R.T.: 5.181 min
 Delta R.T.: -0.002 min
 Response: 1254598621
 Conc: 33.31 ng/ml



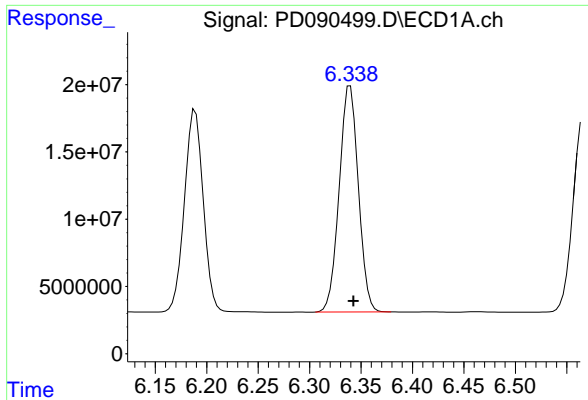
#12 4,4'-DDE

R.T.: 6.189 min
 Delta R.T.: -0.003 min
 Response: 191581866
 Conc: 36.79 ng/ml



#12 4,4'-DDE

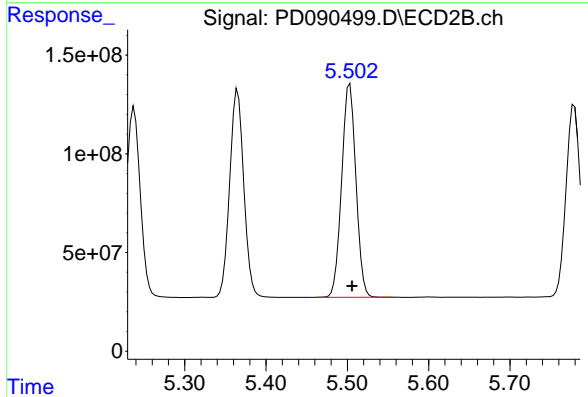
R.T.: 5.365 min
 Delta R.T.: -0.003 min
 Response: 1273165055
 Conc: 33.26 ng/ml



#13 Dieldrin

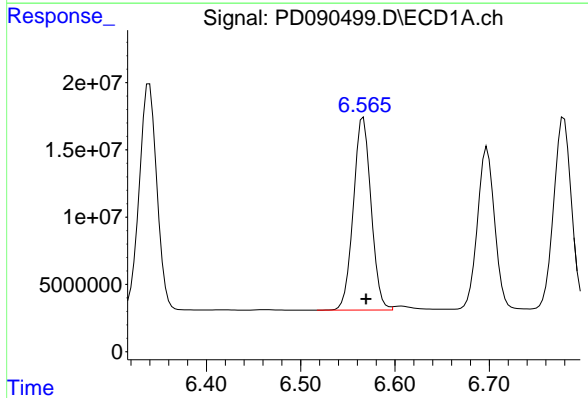
R.T.: 6.340 min
 Delta R.T.: -0.003 min
 Response: 217734361
 Conc: 37.77 ng/ml

Instrument :
 ECD_D
 ClientSampleId :
 SOIL-PILE-1-WCMS



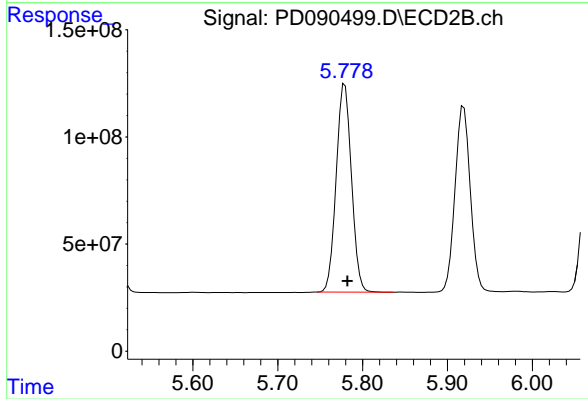
#13 Dieldrin

R.T.: 5.503 min
 Delta R.T.: -0.003 min
 Response: 1314186932
 Conc: 33.74 ng/ml



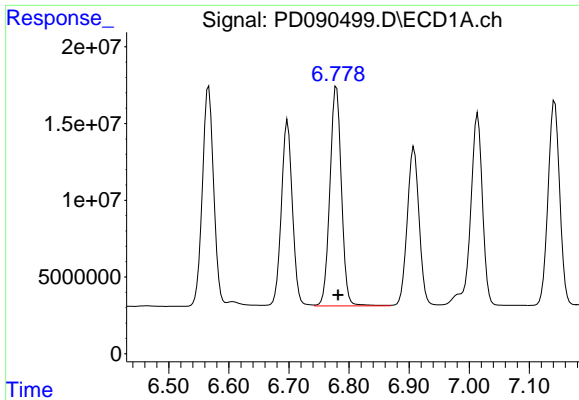
#14 Endrin

R.T.: 6.566 min
 Delta R.T.: -0.003 min
 Response: 187113357
 Conc: 38.23 ng/ml



#14 Endrin

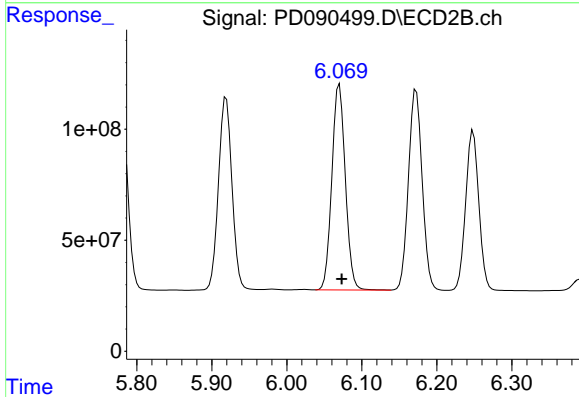
R.T.: 5.779 min
 Delta R.T.: -0.003 min
 Response: 1212390833
 Conc: 33.84 ng/ml



#15 Endosulfan II

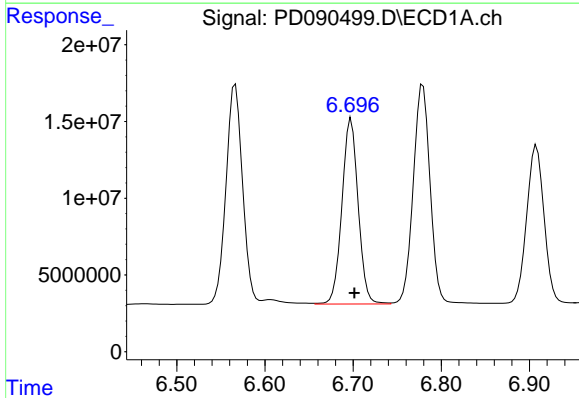
R.T.: 6.779 min
 Delta R.T.: -0.002 min
 Response: 190975708
 Conc: 39.15 ng/ml

Instrument :
 ECD_D
 ClientSampleId :
 SOIL-PILE-1-WCMS



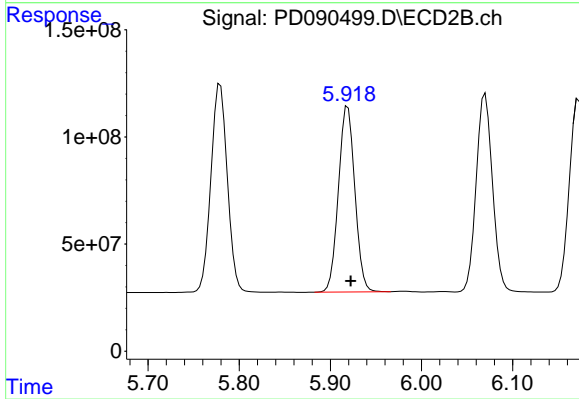
#15 Endosulfan II

R.T.: 6.070 min
 Delta R.T.: -0.003 min
 Response: 1157139153
 Conc: 34.28 ng/ml



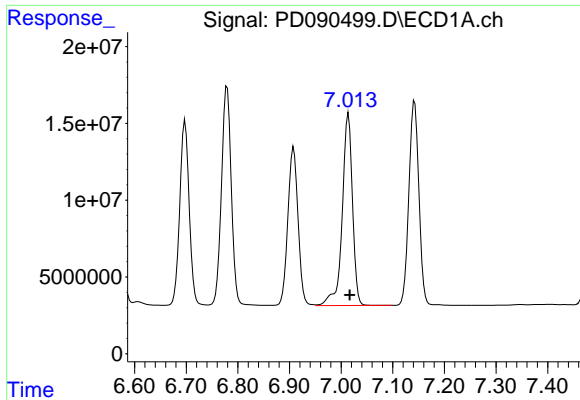
#16 4,4'-DDD

R.T.: 6.698 min
 Delta R.T.: -0.004 min
 Response: 154208635
 Conc: 37.63 ng/ml



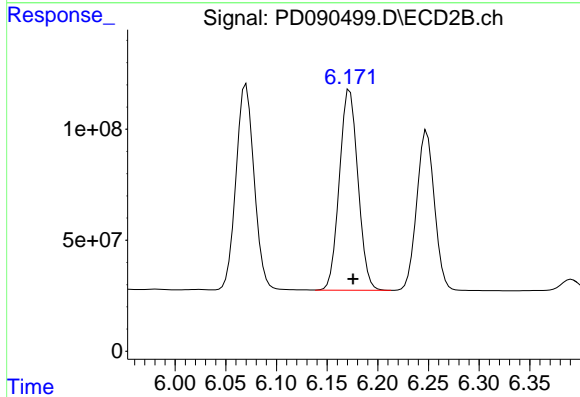
#16 4,4'-DDD

R.T.: 5.919 min
 Delta R.T.: -0.003 min
 Response: 1084303315
 Conc: 33.44 ng/ml

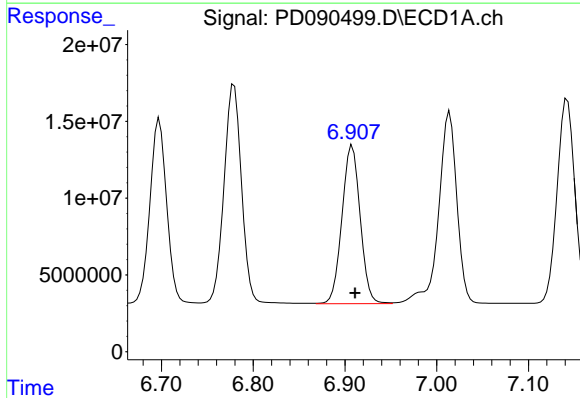


#17 4,4'-DDT
 R.T.: 7.014 min
 Delta R.T.: -0.003 min
 Response: 173032695
 Conc: 38.86 ng/ml

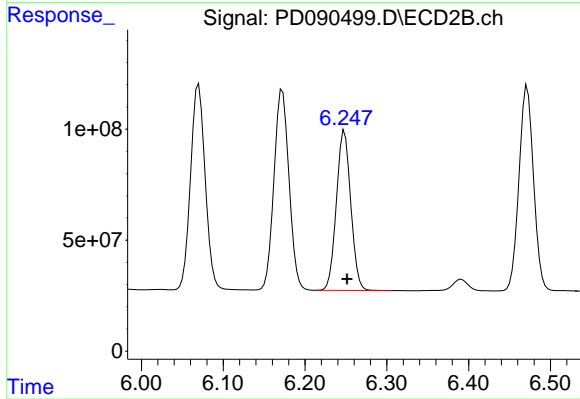
Instrument :
 ECD_D
 ClientSampleId :
 SOIL-PILE-1-WCMS



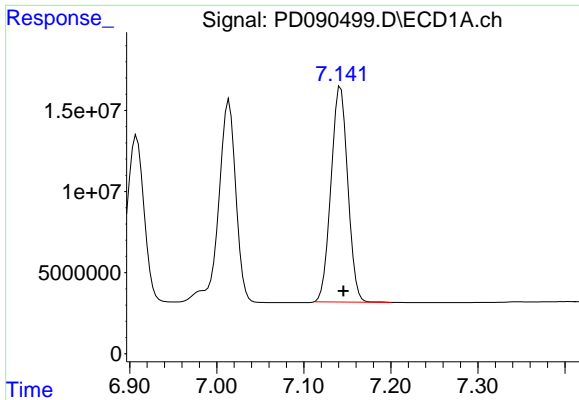
#17 4,4'-DDT
 R.T.: 6.172 min
 Delta R.T.: -0.003 min
 Response: 1151878999
 Conc: 33.51 ng/ml



#18 Endrin aldehyde
 R.T.: 6.908 min
 Delta R.T.: -0.003 min
 Response: 141893290
 Conc: 41.36 ng/ml

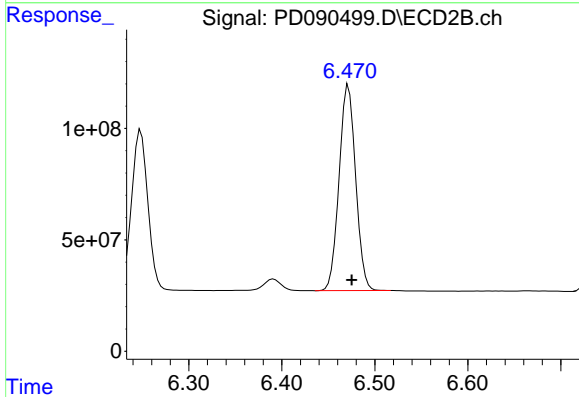


#18 Endrin aldehyde
 R.T.: 6.248 min
 Delta R.T.: -0.003 min
 Response: 878667852
 Conc: 37.32 ng/ml

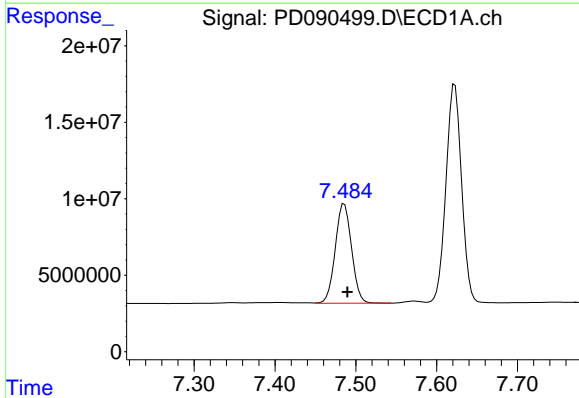


#19 Endosulfan Sulfate
 R.T.: 7.142 min
 Delta R.T.: -0.003 min
 Response: 177814207
 Conc: 38.65 ng/ml

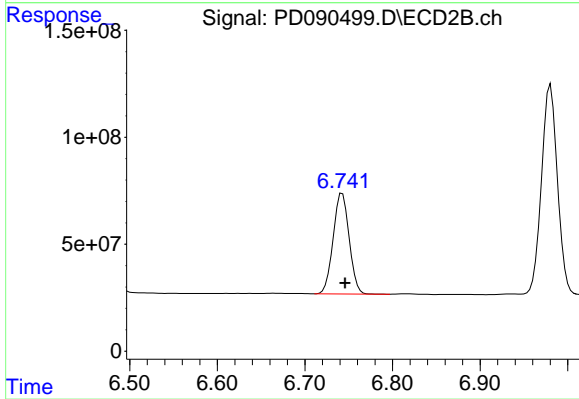
Instrument :
 ECD_D
 ClientSampleId :
 SOIL-PILE-1-WCMS



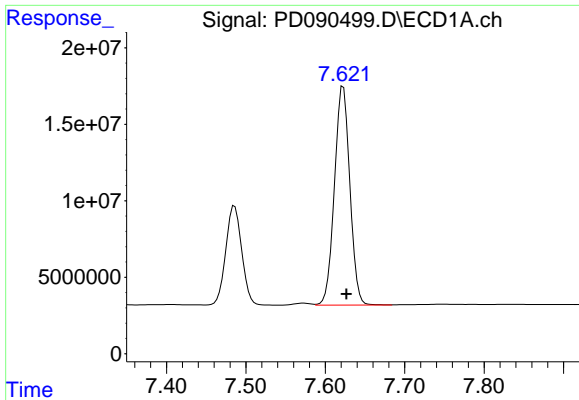
#19 Endosulfan Sulfate
 R.T.: 6.472 min
 Delta R.T.: -0.003 min
 Response: 1142038971
 Conc: 34.94 ng/ml



#20 Methoxychlor
 R.T.: 7.486 min
 Delta R.T.: -0.004 min
 Response: 90998777
 Conc: 38.62 ng/ml



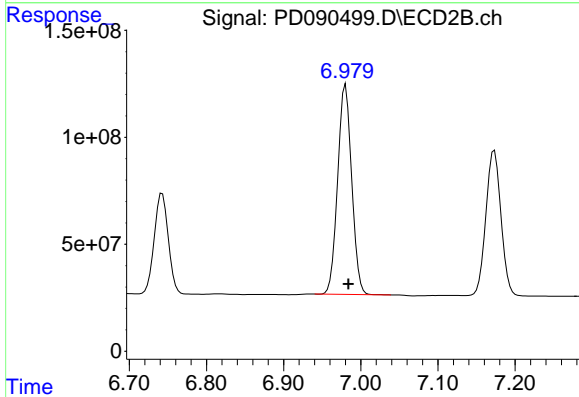
#20 Methoxychlor
 R.T.: 6.743 min
 Delta R.T.: -0.003 min
 Response: 598576940
 Conc: 34.40 ng/ml



#21 Endrin ketone

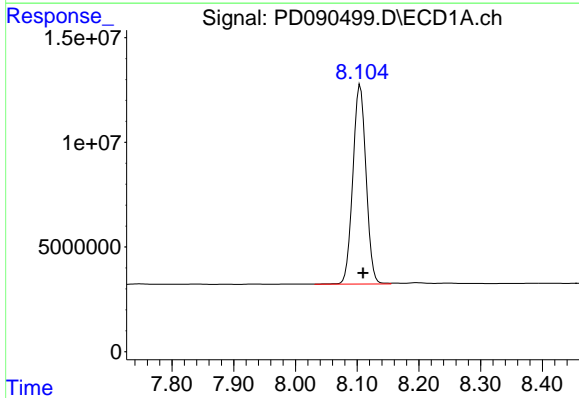
R.T.: 7.623 min
 Delta R.T.: -0.004 min
 Response: 192647781
 Conc: 38.94 ng/ml

Instrument :
 ECD_D
 ClientSampleId :
 SOIL-PILE-1-WCMS



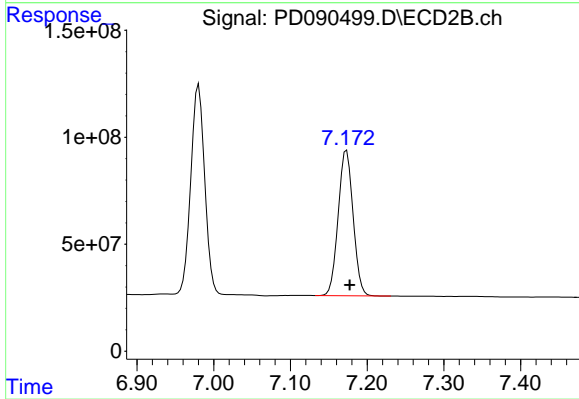
#21 Endrin ketone

R.T.: 6.980 min
 Delta R.T.: -0.004 min
 Response: 1237149581
 Conc: 34.27 ng/ml



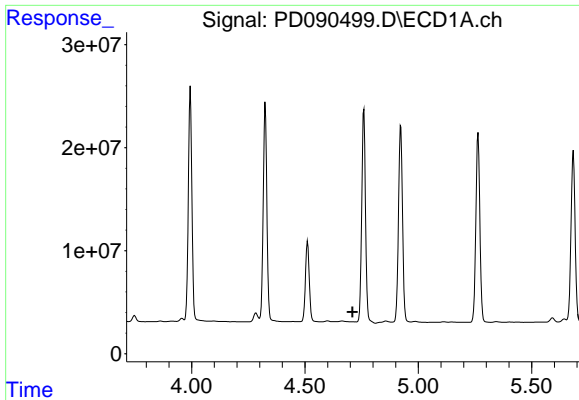
#22 Mirex

R.T.: 8.105 min
 Delta R.T.: -0.004 min
 Response: 141422696
 Conc: 38.17 ng/ml



#22 Mirex

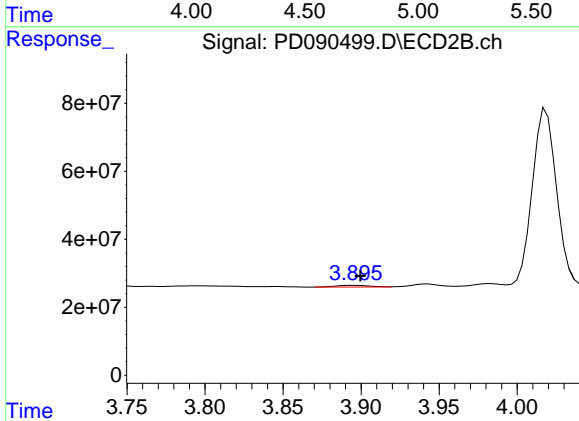
R.T.: 7.173 min
 Delta R.T.: -0.004 min
 Response: 920341601
 Conc: 33.34 ng/ml



#23 Chlordane-1

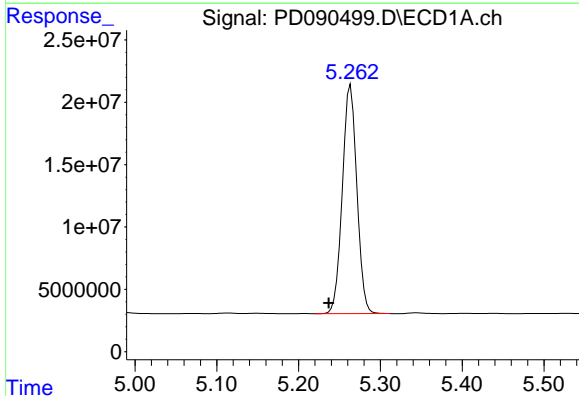
R.T.: 0.000 min
 Exp R.T.: 4.710 min
 Response: 0
 Conc: N.D.

Instrument :
 ECD_D
 ClientSampleId :
 SOIL-PILE-1-WCMS



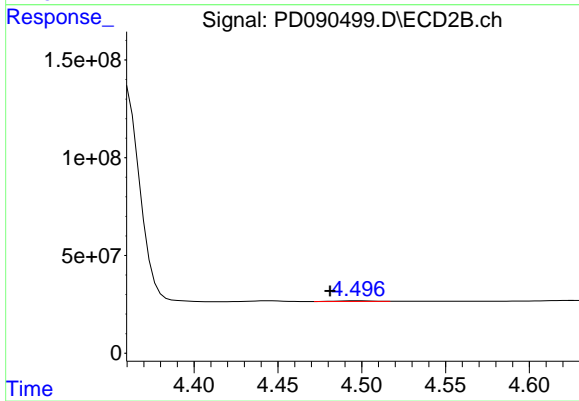
#23 Chlordane-1

R.T.: 3.896 min
 Delta R.T.: -0.004 min
 Response: 7505587
 Conc: 6.24 ng/ml



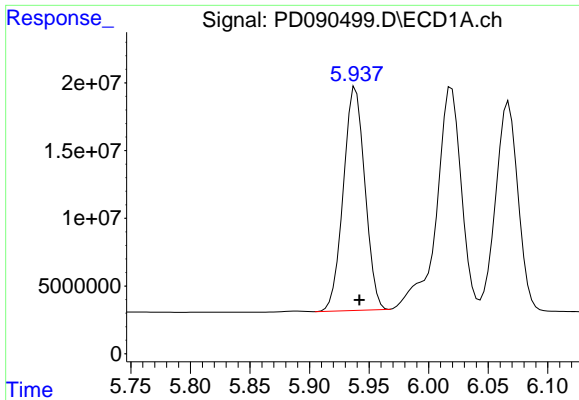
#24 Chlordane-2

R.T.: 5.264 min
 Delta R.T.: 0.027 min
 Response: 224971055
 Conc: 1048.35 ng/ml



#24 Chlordane-2

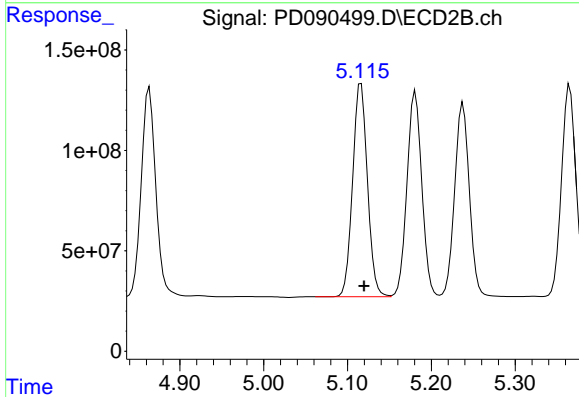
R.T.: 4.498 min
 Delta R.T.: 0.017 min
 Response: 6403582
 Conc: 5.12 ng/ml



#25 Chlordane-3

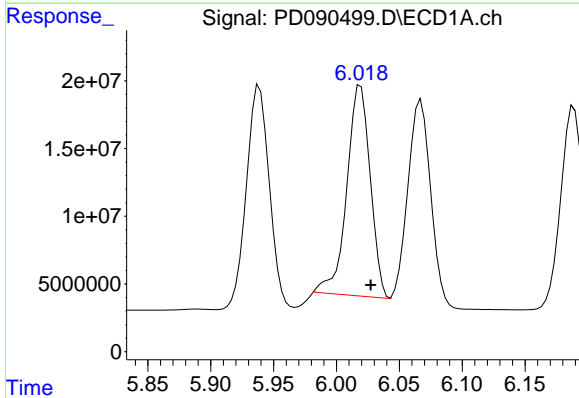
R.T.: 5.939 min
 Delta R.T.: -0.003 min
 Response: 207543112
 Conc: 247.96 ng/ml

Instrument :
 ECD_D
 ClientSampleId :
 SOIL-PILE-1-WCMS



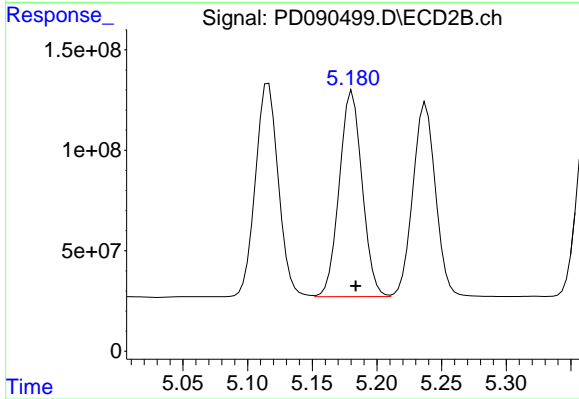
#25 Chlordane-3

R.T.: 5.116 min
 Delta R.T.: -0.003 min
 Response: 1304664389
 Conc: 344.19 ng/ml



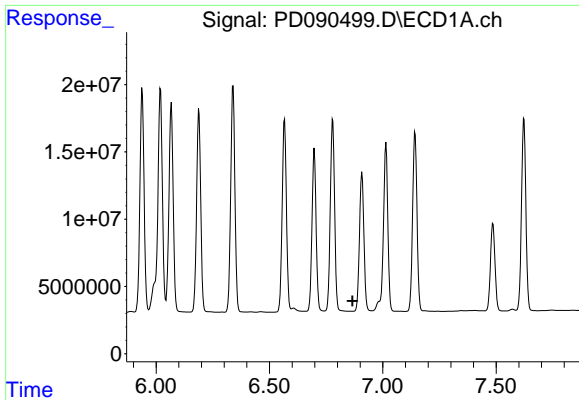
#26 Chlordane-4

R.T.: 6.019 min
 Delta R.T.: -0.008 min
 Response: 201925165
 Conc: 197.86 ng/ml



#26 Chlordane-4

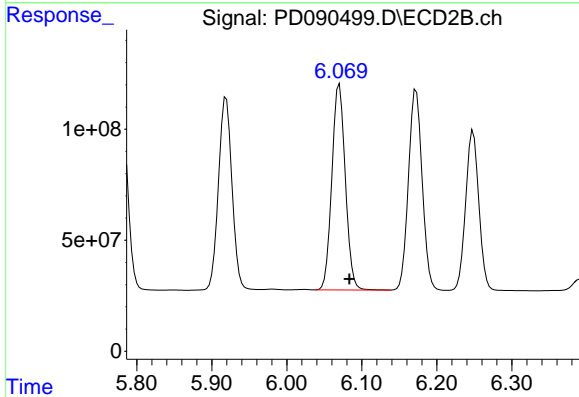
R.T.: 5.181 min
 Delta R.T.: -0.003 min
 Response: 1254598621
 Conc: 385.31 ng/ml



#27 Chlordane-5

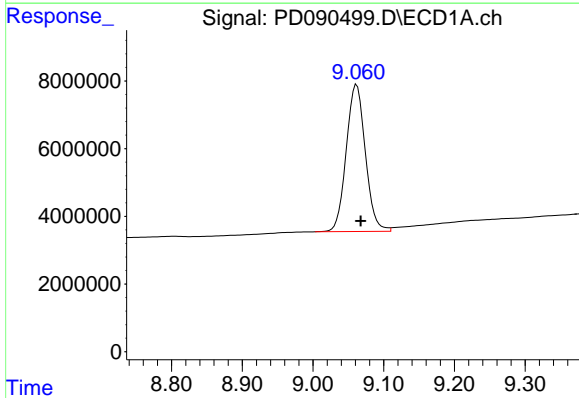
R.T.: 0.000 min
 Exp R.T.: 6.867 min
 Response: 0
 Conc: N.D.

Instrument :
 ECD_D
 ClientSampleId :
 SOIL-PILE-1-WCMS



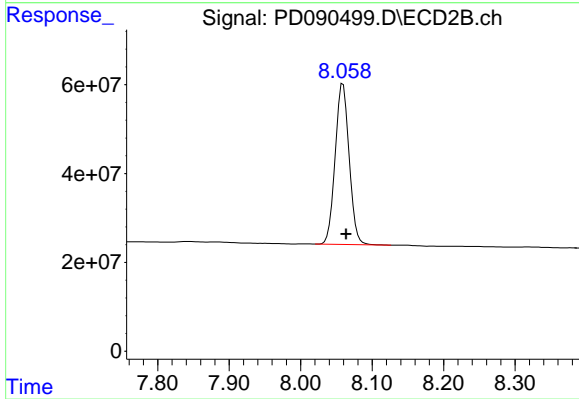
#27 Chlordane-5

R.T.: 6.070 min
 Delta R.T.: -0.013 min
 Response: 1157139153
 Conc: 762.47 ng/ml



#28 Decachlorobiphenyl

R.T.: 9.062 min
 Delta R.T.: -0.006 min
 Response: 81649951
 Conc: 16.92 ng/ml



#28 Decachlorobiphenyl

R.T.: 8.059 min
 Delta R.T.: -0.005 min
 Response: 491487874
 Conc: 15.16 ng/ml