

Data Path : Z:\pestpcbsrv\HPCHEM1\ECD_D\Data\PD100325\
 Data File : PD090501.D
 Signal(s) : Signal #1: ECD1A.ch Signal #2: ECD2B.ch
 Acq On : 02 Oct 2025 16:24
 Operator : AR\AJ
 Sample : Q3256-08
 Misc :
 ALS Vial : 11 Sample Multiplier: 1

Instrument :
 ECD_D
 ClientSampleId :
 SOIL-PILE-2-WC

Integration File signal 1: autoint1.e
 Integration File signal 2: autoint2.e
 Quant Time: Oct 03 02:45:54 2025
 Quant Method : Z:\pestpcbsrv\HPCHEM1\ECD_D\Method\PD091825.M
 Quant Title : GC Extractables
 QLast Update : Fri Sep 19 05:52:38 2025
 Response via : Initial Calibration
 Integrator: ChemStation

Volume Inj. : 1 µl
 Signal #1 Phase : ZB-MR2 Signal #2 Phase: ZB-MR2
 Signal #1 Info : 30M x 0.32mm x0.5 Signal #2 Info : 30M x 0.32mm x 0.25µm

Compound	RT#1	RT#2	Resp#1	Resp#2	ng/ml	ng/ml

System Monitoring Compounds						
1) SA Tetrachlo...	3.546	2.876	47448391	393.4E6	14.597	14.333
28) SA Decachlor...	9.060	8.059	88159682	535.4E6	18.271	16.518
Target Compounds						
2) A alpha-BHC	3.995	3.382	291183	4320575	0.042	0.099 #
4) MA Heptachlor	4.909f	4.084	1322668	309279	0.200	0.008 #
5) MB Aldrin	0.000	4.375	0	1101373	N.D.	0.028 #
6) B beta-BHC	4.491f	4.034	665583	3992833	0.258	0.230
7) B delta-BHC	4.771	4.266	2084005	569280	0.323	0.014 #
8) B Heptachlo...	0.000	4.887f	0	32980365	N.D.	0.895 #
9) A Endosulfan I	0.000	5.246	0	1213211	N.D.	0.035 #
10) B gamma-Chl...	0.000	5.116	0	912808	N.D.	0.023 #
12) B 4,4'-DDE	0.000	5.361	0	104947	N.D.	0.003 #
13) MA Dieldrin	6.354	5.502	216288	1344167	0.038	0.035
14) MA Endrin	6.541f	5.786	259249	2326150	0.053	0.065
15) B Endosulfa...	6.765f	6.091f	1384327	3143146	0.284	0.093 #
17) MA 4,4'-DDT	0.000	6.177	0	1451286	N.D.	0.042 #
18) B Endrin al...	6.922	6.249	376666	440801	0.110	0.019 #
19) B Endosulfa...	0.000	6.478	0	499428	N.D.	0.015 #
20) A Methoxychlor	7.485	6.743	337465	517120	0.143	0.030 #
21) B Endrin ke...	7.618	0.000	214490	0	0.043	N.D. #
22) Mirex	8.117	7.187	795055	1683306	0.215	0.061 #
23) Chlordane-1	0.000	3.896	0	5578489	N.D.	4.635 #
24) Chlordane-2	0.000	4.446f	0	10548350	N.D.	8.436 #
25) Chlordane-3	0.000	5.116	0	912808	N.D.	0.241 #
26) Chlordane-4	0.000	5.176	0	270938	N.D.	0.083 #
27) Chlordane-5	0.000	6.091	0	3143146	N.D.	2.071 #

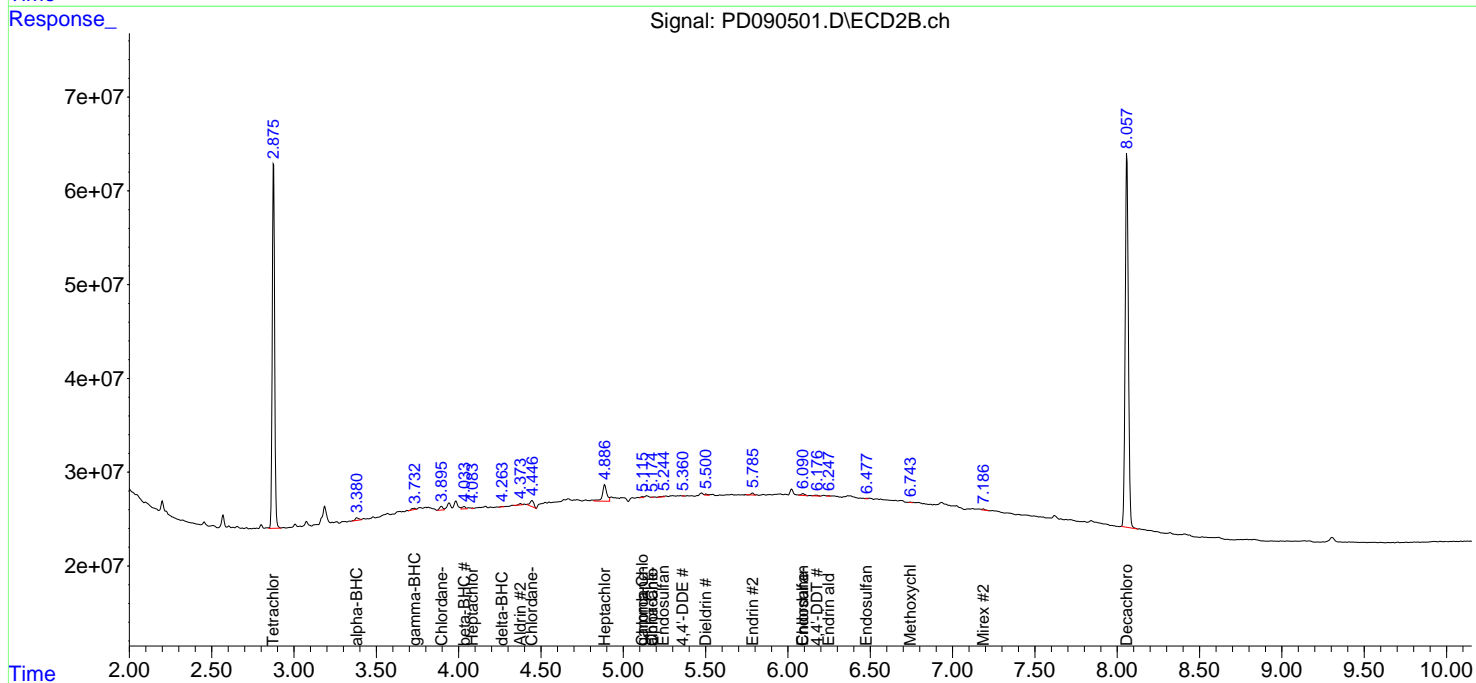
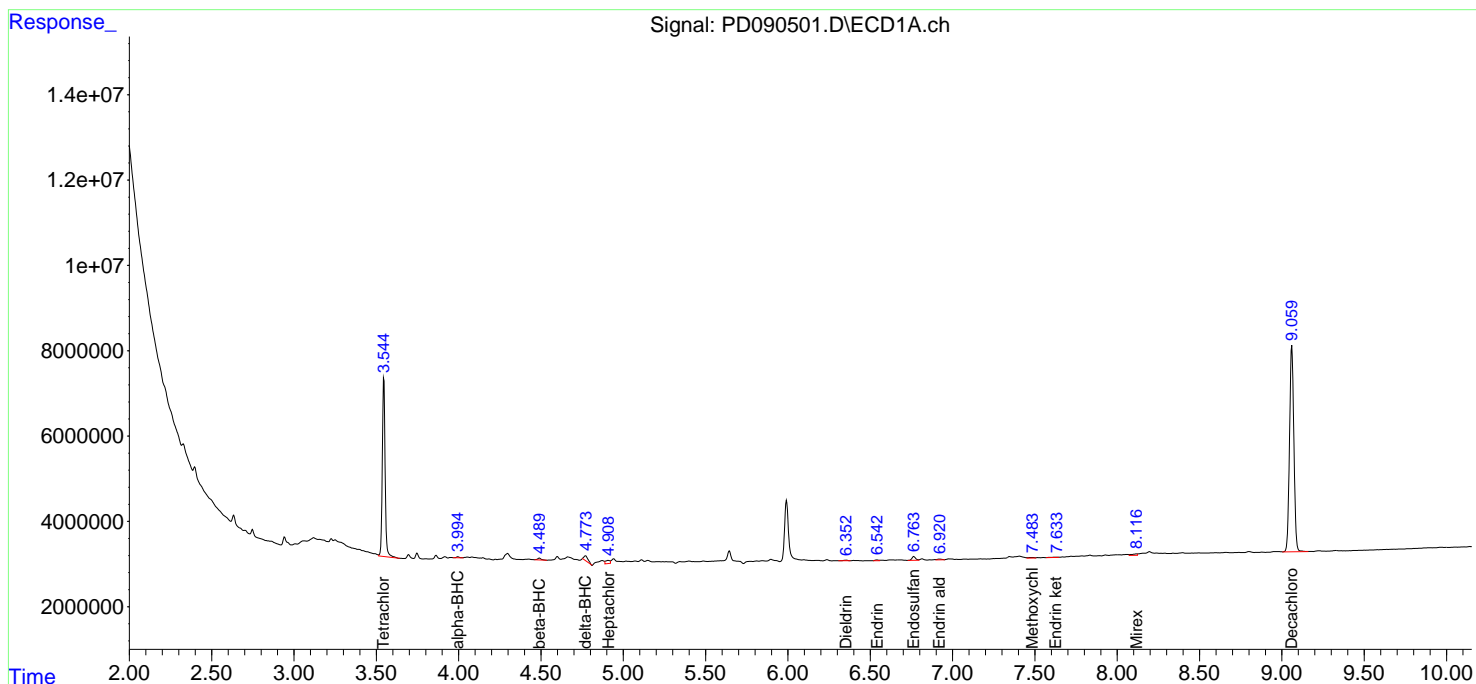
(f)=RT Delta > 1/2 Window (#)=Amounts differ by > 25% (m)=manual int.

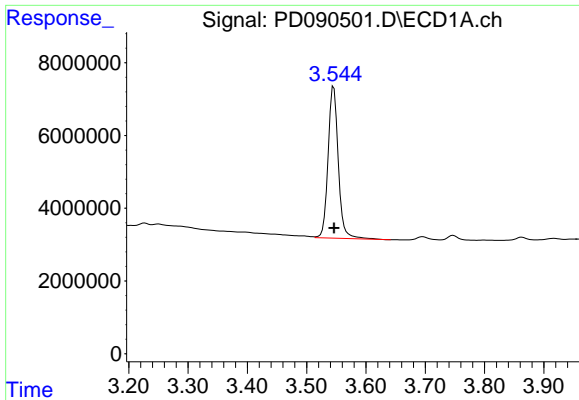
Data Path : Z:\pestpcbsrv\HPCHEM1\ECD_D\Data\PD100325\
 Data File : PD090501.D
 Signal(s) : Signal #1: ECD1A.ch Signal #2: ECD2B.ch
 Acq On : 02 Oct 2025 16:24
 Operator : AR\AJ
 Sample : Q3256-08
 Misc :
 ALS Vial : 11 Sample Multiplier: 1

Instrument :
 ECD_D
 ClientSampleId :
 SOIL-PILE-2-WC

Integration File signal 1: autoint1.e
 Integration File signal 2: autoint2.e
 Quant Time: Oct 03 02:45:54 2025
 Quant Method : Z:\pestpcbsrv\HPCHEM1\ECD_D\Method\PD091825.M
 Quant Title : GC Extractables
 QLast Update : Fri Sep 19 05:52:38 2025
 Response via : Initial Calibration
 Integrator: ChemStation

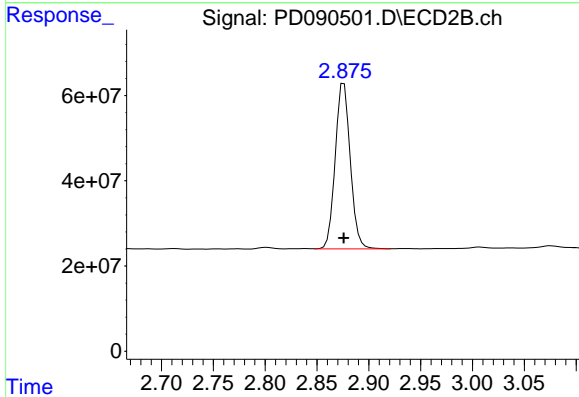
Volume Inj. : 1 µl
 Signal #1 Phase : ZB-MR1 Signal #2 Phase: ZB-MR2
 Signal #1 Info : 30M x 0.32mm x0.5 Signal #2 Info : 30M x 0.32mm x 0.25µm



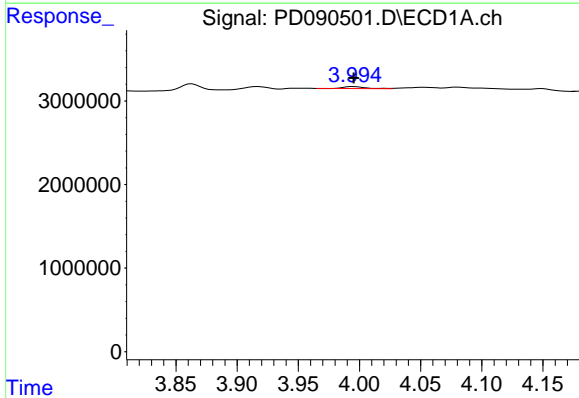


#1 Tetrachloro-m-xylene
 R.T.: 3.546 min
 Delta R.T.: 0.000 min
 Response: 47448391
 Conc: 14.60 ng/ml

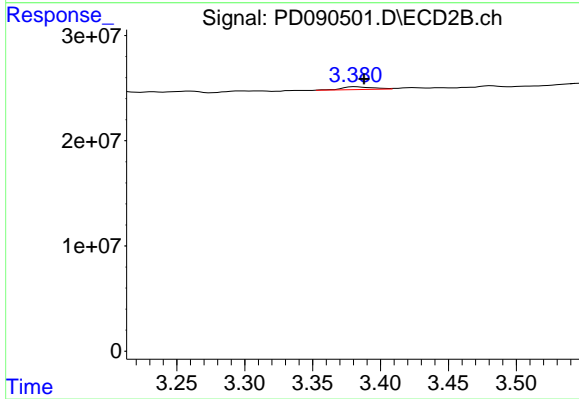
Instrument :
 ECD_D
 ClientSampleId :
 SOIL-PILE-2-WC



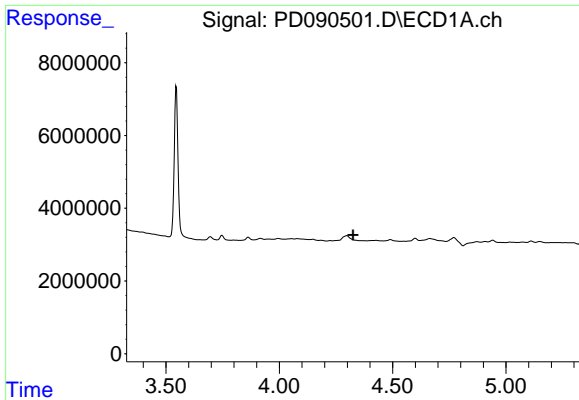
#1 Tetrachloro-m-xylene
 R.T.: 2.876 min
 Delta R.T.: 0.000 min
 Response: 393439269
 Conc: 14.33 ng/ml



#2 alpha-BHC
 R.T.: 3.995 min
 Delta R.T.: 0.000 min
 Response: 291183
 Conc: 0.04 ng/ml

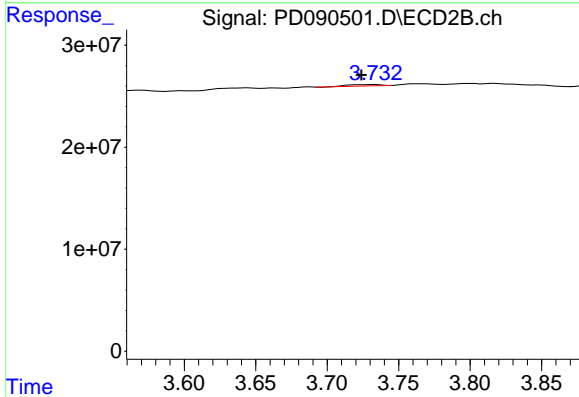


#2 alpha-BHC
 R.T.: 3.382 min
 Delta R.T.: -0.006 min
 Response: 4320575
 Conc: 0.10 ng/ml

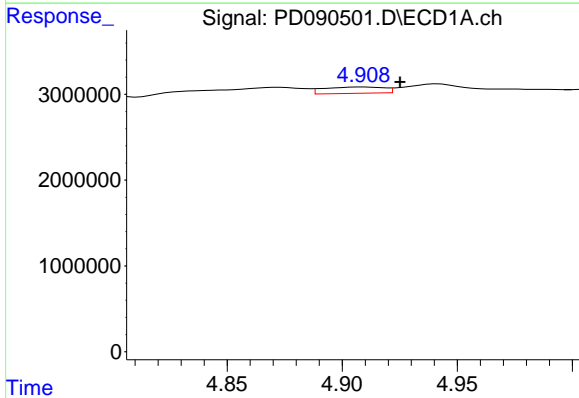


#3 gamma-BHC (Lindane)
 R.T.: 4.298 min
 Delta R.T.: -0.028 min
 Response: -1394604
 Conc: N.D.

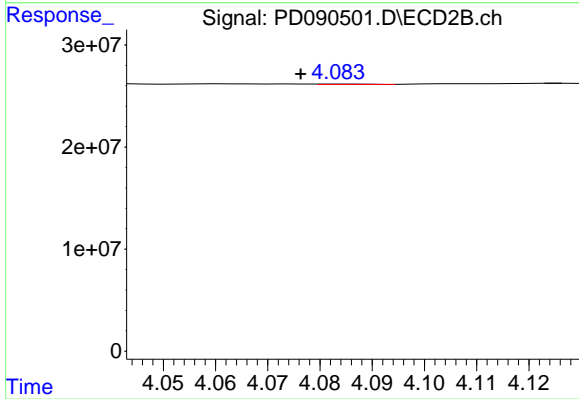
Instrument : ECD_D
 ClientSampleId : SOIL-PILE-2-WC



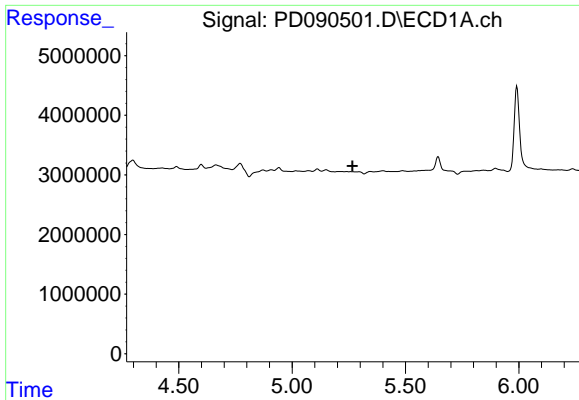
#3 gamma-BHC (Lindane)
 R.T.: 3.733 min
 Delta R.T.: 0.009 min
 Response: 2044226
 Conc: 0.05 ng/ml



#4 Heptachlor
 R.T.: 4.909 min
 Delta R.T.: -0.016 min
 Response: 1322668
 Conc: 0.20 ng/ml

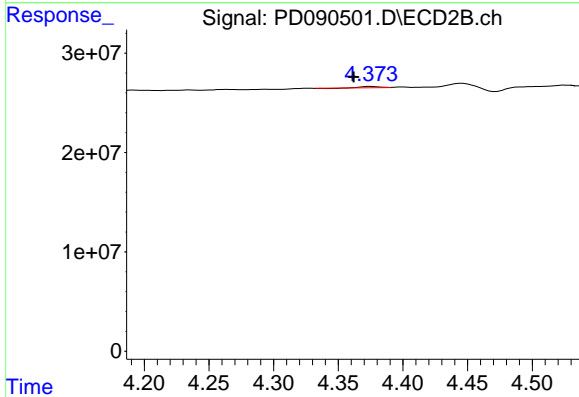


#4 Heptachlor
 R.T.: 4.084 min
 Delta R.T.: 0.008 min
 Response: 309279
 Conc: 0.01 ng/ml

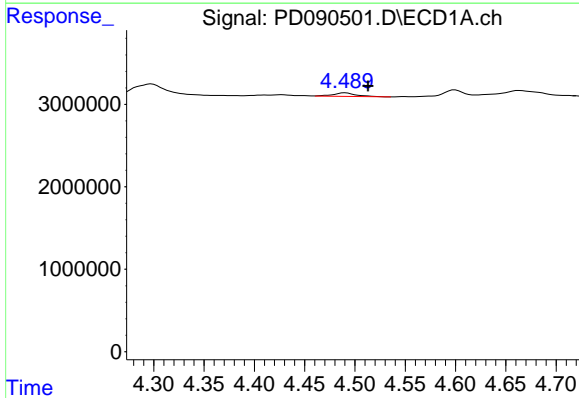


#5 Aldrin
 R.T.: 0.000 min
 Exp R.T.: 5.266 min
 Response: 0
 Conc: N.D.

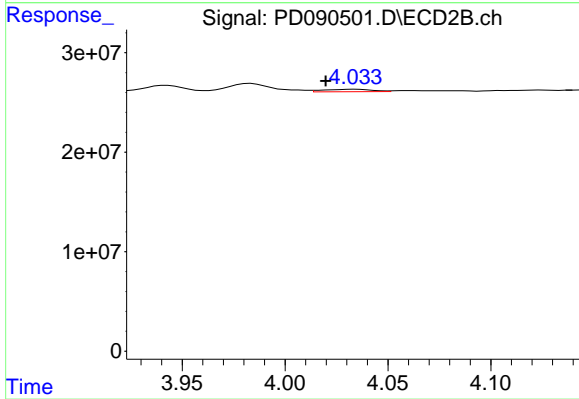
Instrument :
 ECD_D
 ClientSampleId :
 SOIL-PILE-2-WC



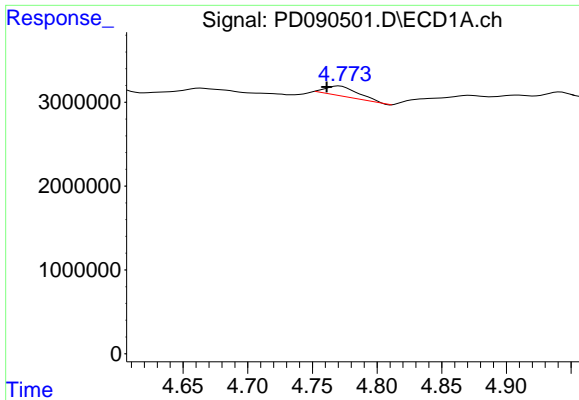
#5 Aldrin
 R.T.: 4.375 min
 Delta R.T.: 0.013 min
 Response: 1101373
 Conc: 0.03 ng/ml



#6 beta-BHC
 R.T.: 4.491 min
 Delta R.T.: -0.023 min
 Response: 665583
 Conc: 0.26 ng/ml



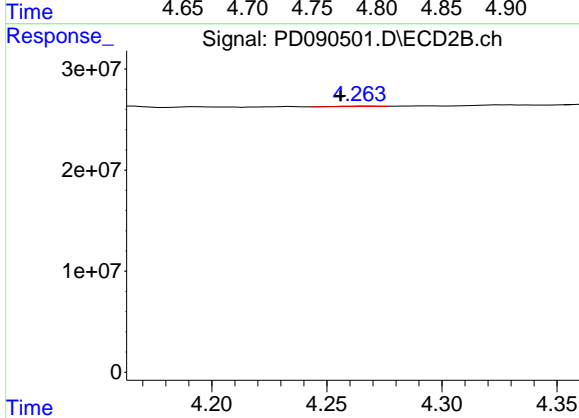
#6 beta-BHC
 R.T.: 4.034 min
 Delta R.T.: 0.015 min
 Response: 3992833
 Conc: 0.23 ng/ml



#7 delta-BHC

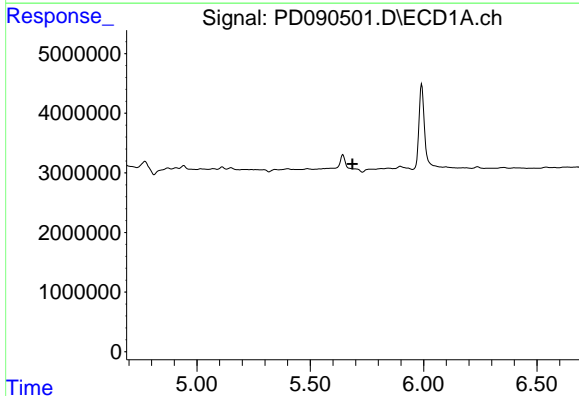
R.T.: 4.771 min
 Delta R.T.: 0.010 min
 Response: 2084005
 Conc: 0.32 ng/ml

Instrument :
 ECD_D
 ClientSampleId :
 SOIL-PILE-2-WC



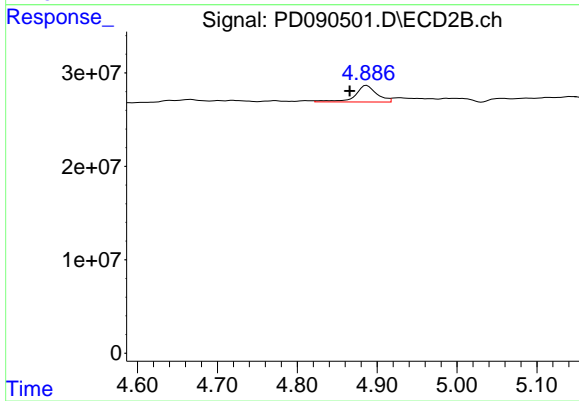
#7 delta-BHC

R.T.: 4.266 min
 Delta R.T.: 0.010 min
 Response: 569280
 Conc: 0.01 ng/ml



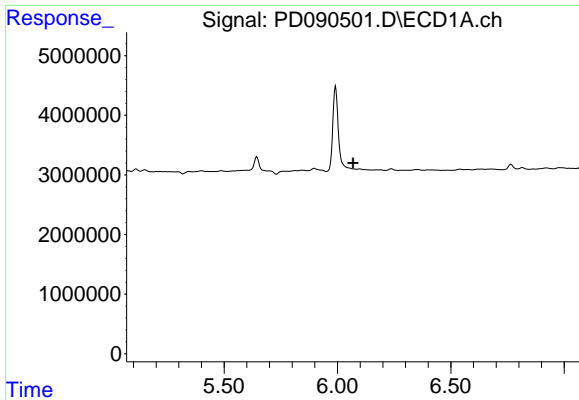
#8 Heptachlor epoxide

R.T.: 0.000 min
 Exp R.T. : 5.686 min
 Response: 0
 Conc: N.D.



#8 Heptachlor epoxide

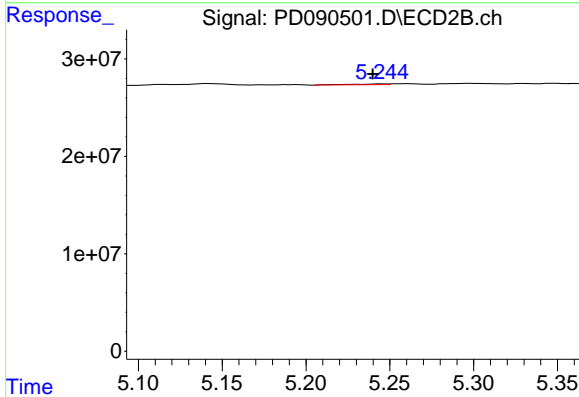
R.T.: 4.887 min
 Delta R.T.: 0.021 min
 Response: 32980365
 Conc: 0.89 ng/ml



#9 Endosulfan I

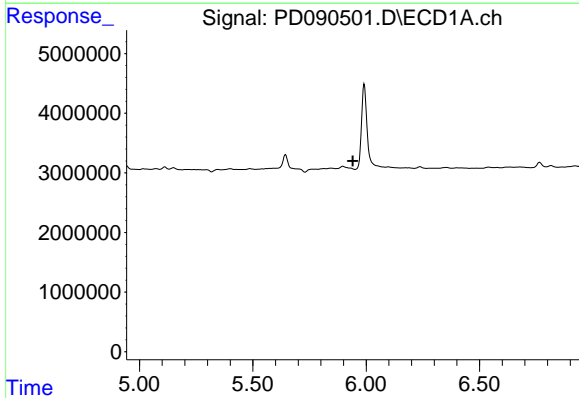
R.T.: 0.000 min
 Exp R.T.: 6.070 min
 Response: 0
 Conc: N.D.

Instrument :
 ECD_D
 ClientSampleId :
 SOIL-PILE-2-WC



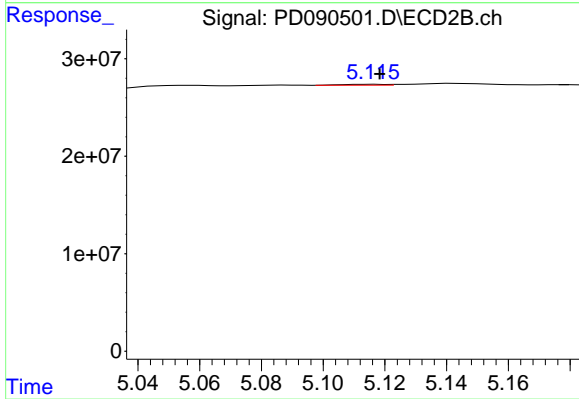
#9 Endosulfan I

R.T.: 5.246 min
 Delta R.T.: 0.006 min
 Response: 1213211
 Conc: 0.04 ng/ml



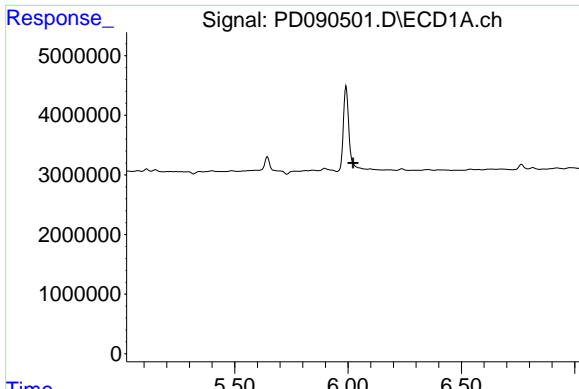
#10 gamma-Chlordane

R.T.: 0.000 min
 Exp R.T.: 5.942 min
 Response: 0
 Conc: N.D.



#10 gamma-Chlordane

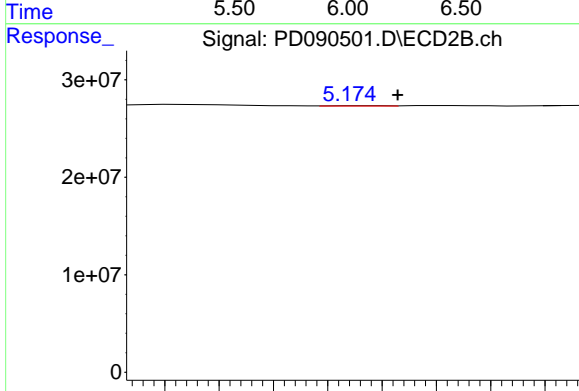
R.T.: 5.116 min
 Delta R.T.: -0.002 min
 Response: 912808
 Conc: 0.02 ng/ml



#11 alpha-Chlordane

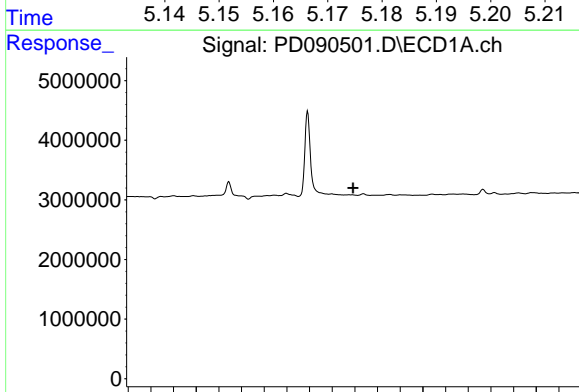
R.T.: 5.991 min
 Delta R.T.: -0.031 min
 Response: -9752963
 Conc: N.D.

Instrument :
 ECD_D
 ClientSampleId :
 SOIL-PILE-2-WC



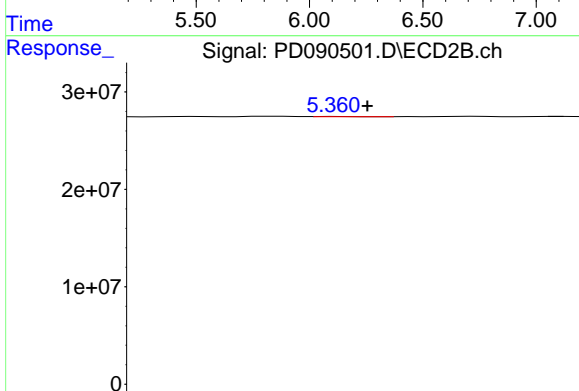
#11 alpha-Chlordane

R.T.: 5.176 min
 Delta R.T.: -0.007 min
 Response: 270938
 Conc: 0.01 ng/ml



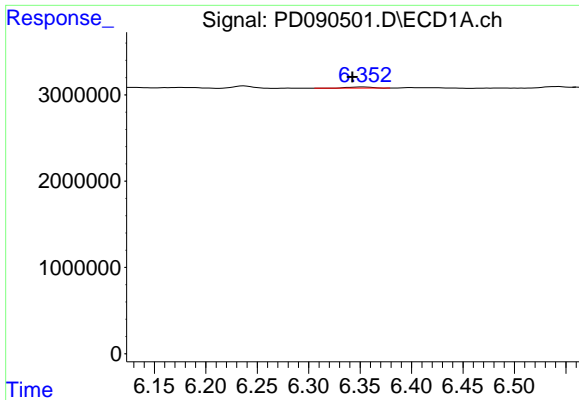
#12 4,4'-DDE

R.T.: 0.000 min
 Exp R.T. : 6.192 min
 Response: 0
 Conc: N.D.



#12 4,4'-DDE

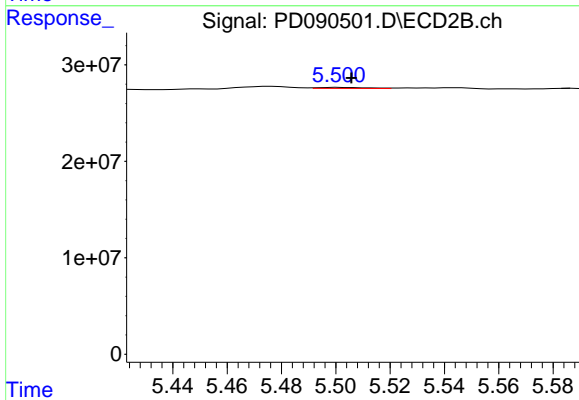
R.T.: 5.361 min
 Delta R.T.: -0.006 min
 Response: 104947
 Conc: 0.00 ng/ml



#13 Dieldrin

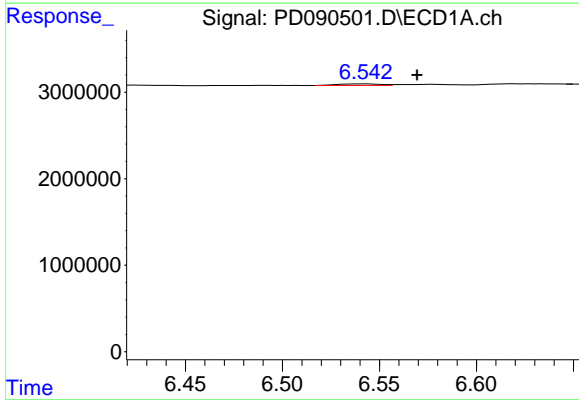
R.T.: 6.354 min
 Delta R.T.: 0.011 min
 Response: 216288
 Conc: 0.04 ng/ml

Instrument : ECD_D
 ClientSampleId : SOIL-PILE-2-WC



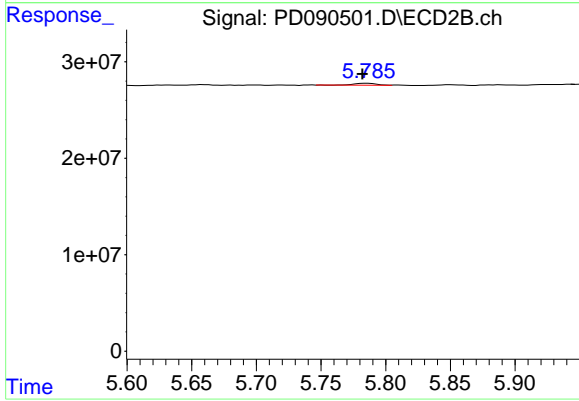
#13 Dieldrin

R.T.: 5.502 min
 Delta R.T.: -0.004 min
 Response: 1344167
 Conc: 0.03 ng/ml



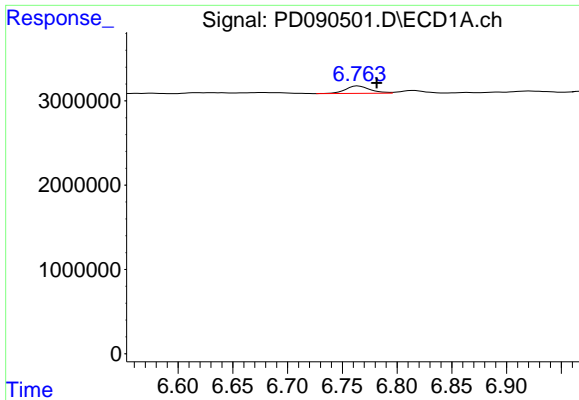
#14 Endrin

R.T.: 6.541 min
 Delta R.T.: -0.028 min
 Response: 259249
 Conc: 0.05 ng/ml



#14 Endrin

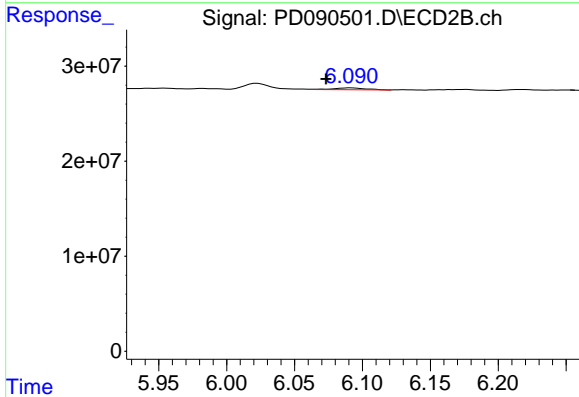
R.T.: 5.786 min
 Delta R.T.: 0.004 min
 Response: 2326150
 Conc: 0.06 ng/ml



#15 Endosulfan II

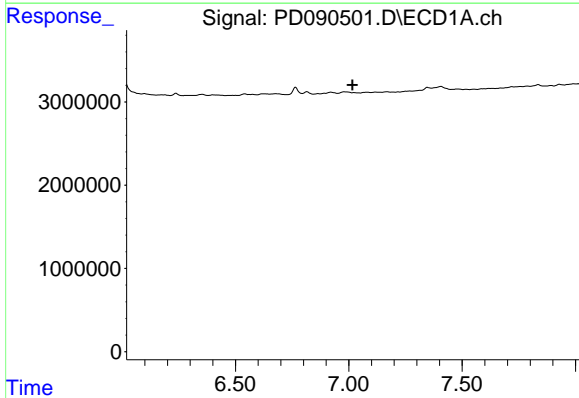
R.T.: 6.765 min
 Delta R.T.: -0.017 min
 Response: 1384327
 Conc: 0.28 ng/ml

Instrument :
 ECD_D
 ClientSampleId :
 SOIL-PILE-2-WC



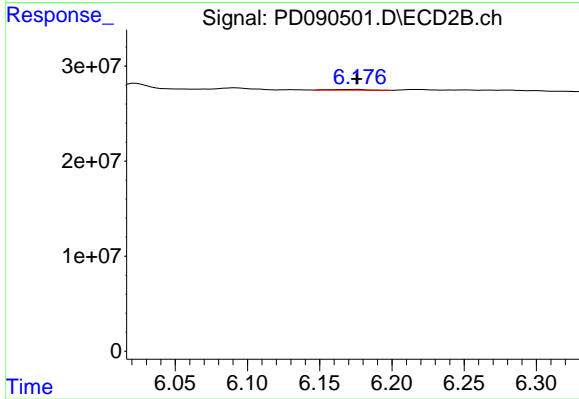
#15 Endosulfan II

R.T.: 6.091 min
 Delta R.T.: 0.018 min
 Response: 3143146
 Conc: 0.09 ng/ml



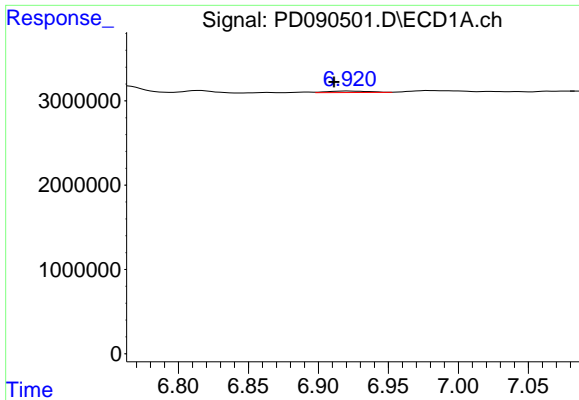
#17 4,4'-DDT

R.T.: 0.000 min
 Exp R.T. : 7.017 min
 Response: 0
 Conc: N.D.



#17 4,4'-DDT

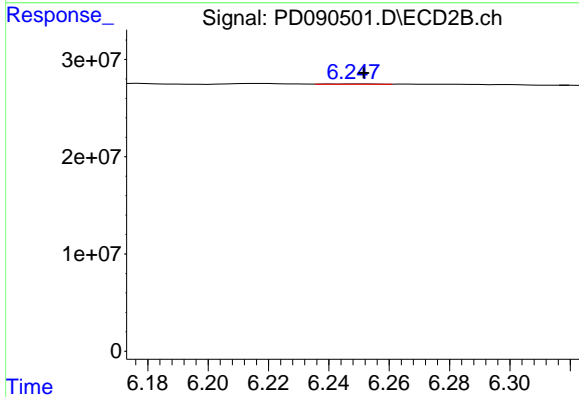
R.T.: 6.177 min
 Delta R.T.: 0.001 min
 Response: 1451286
 Conc: 0.04 ng/ml



#18 Endrin aldehyde

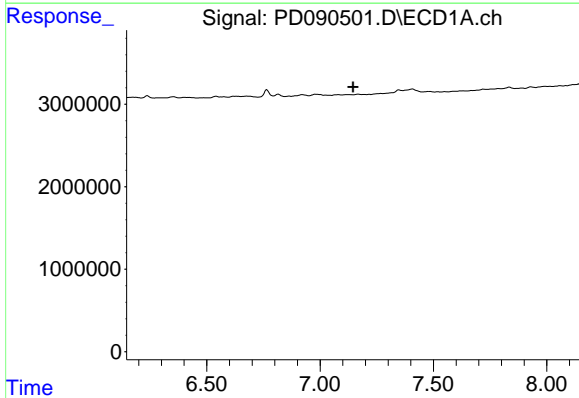
R.T.: 6.922 min
 Delta R.T.: 0.011 min
 Response: 376666
 Conc: 0.11 ng/ml

Instrument : ECD_D
 ClientSampleId : SOIL-PILE-2-WC



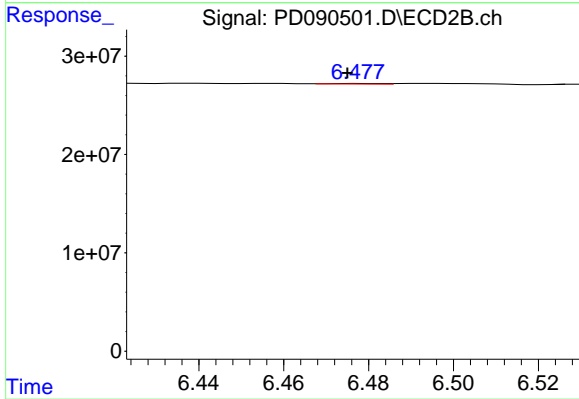
#18 Endrin aldehyde

R.T.: 6.249 min
 Delta R.T.: -0.003 min
 Response: 440801
 Conc: 0.02 ng/ml



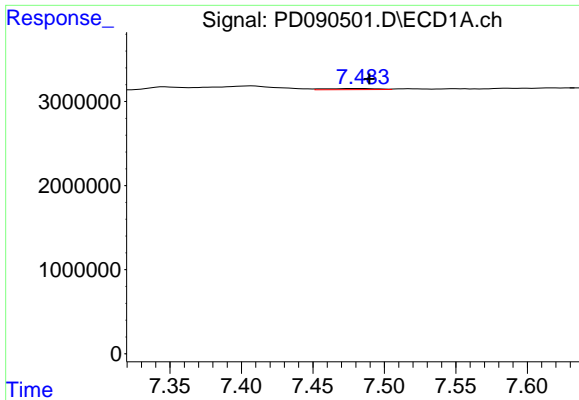
#19 Endosulfan Sulfate

R.T.: 0.000 min
 Exp R.T. : 7.146 min
 Response: 0
 Conc: N.D.



#19 Endosulfan Sulfate

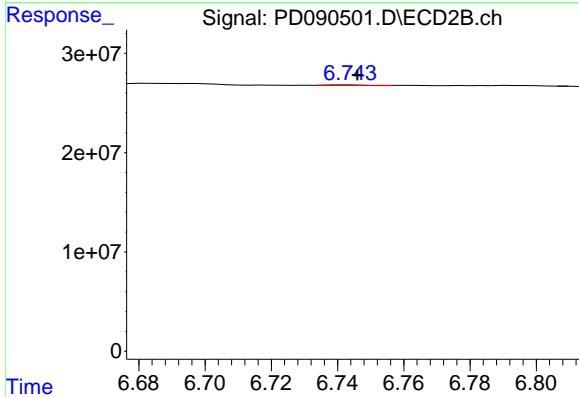
R.T.: 6.478 min
 Delta R.T.: 0.003 min
 Response: 499428
 Conc: 0.02 ng/ml



#20 Methoxychlor

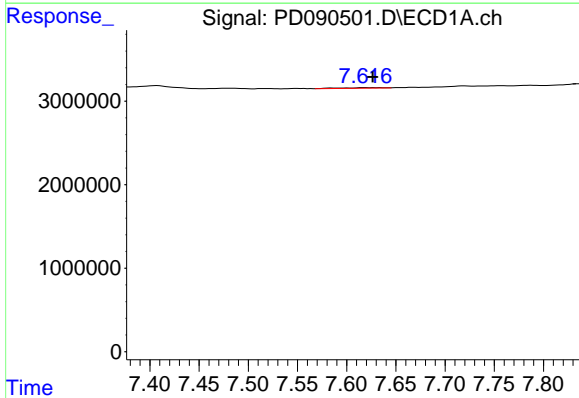
R.T.: 7.485 min
 Delta R.T.: -0.005 min
 Response: 337465
 Conc: 0.14 ng/ml

Instrument :
 ECD_D
 ClientSampleId :
 SOIL-PILE-2-WC



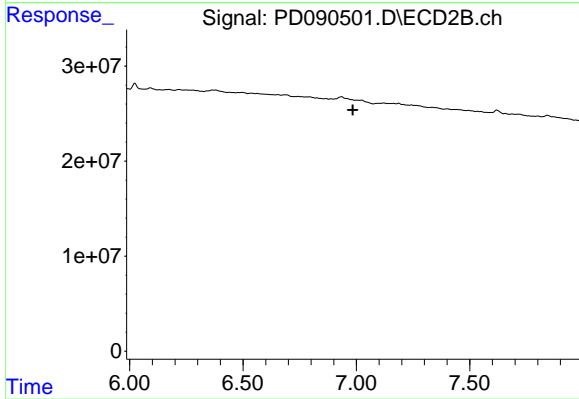
#20 Methoxychlor

R.T.: 6.743 min
 Delta R.T.: -0.003 min
 Response: 517120
 Conc: 0.03 ng/ml



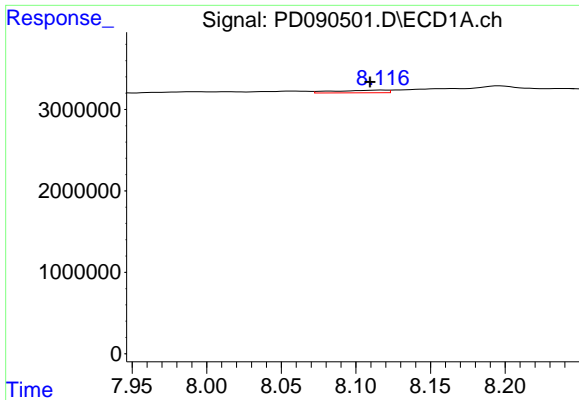
#21 Endrin ketone

R.T.: 7.618 min
 Delta R.T.: -0.008 min
 Response: 214490
 Conc: 0.04 ng/ml



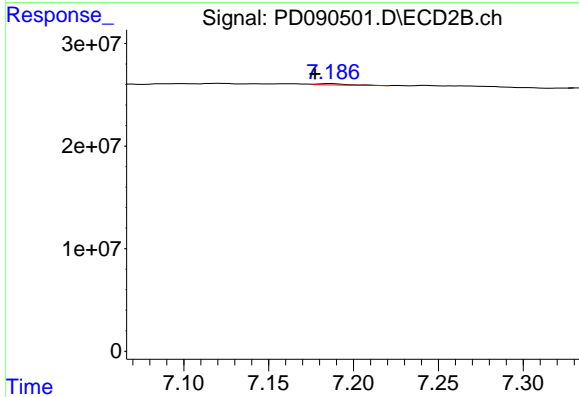
#21 Endrin ketone

R.T.: 0.000 min
 Exp R.T. : 6.984 min
 Response: 0
 Conc: N.D.

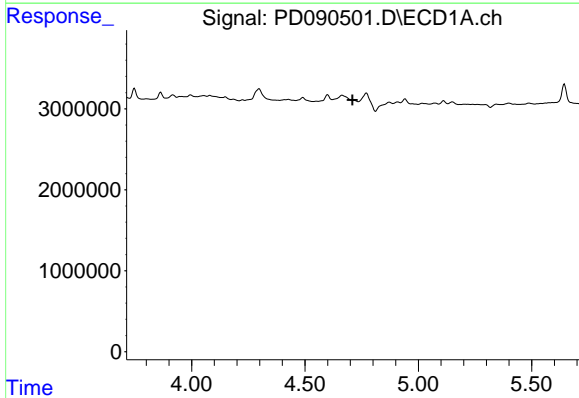


#22 Mirex
 R.T.: 8.117 min
 Delta R.T.: 0.008 min
 Response: 795055
 Conc: 0.21 ng/ml

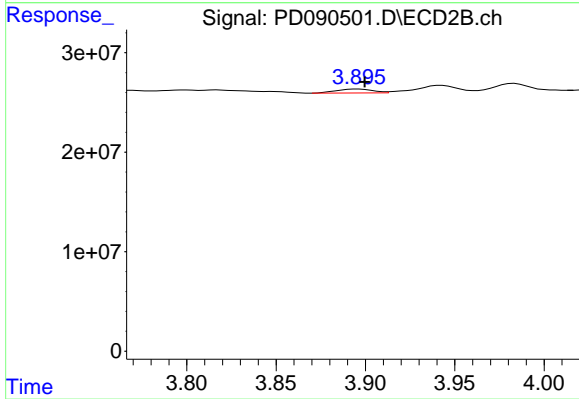
Instrument :
 ECD_D
 ClientSampleId :
 SOIL-PILE-2-WC



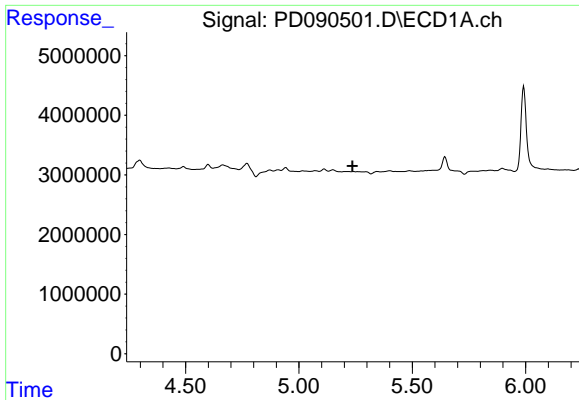
#22 Mirex
 R.T.: 7.187 min
 Delta R.T.: 0.010 min
 Response: 1683306
 Conc: 0.06 ng/ml



#23 Chlordane-1
 R.T.: 0.000 min
 Exp R.T. : 4.710 min
 Response: 0
 Conc: N.D.



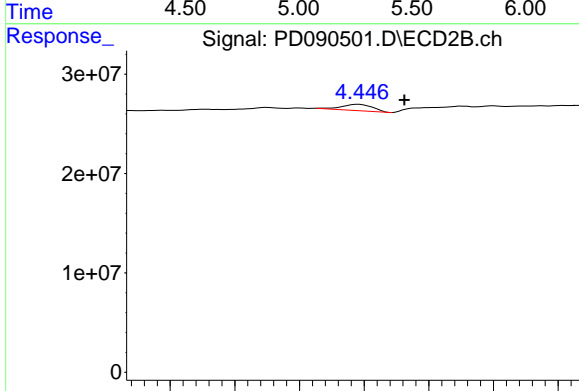
#23 Chlordane-1
 R.T.: 3.896 min
 Delta R.T.: -0.003 min
 Response: 5578489
 Conc: 4.64 ng/ml



#24 Chlordane-2

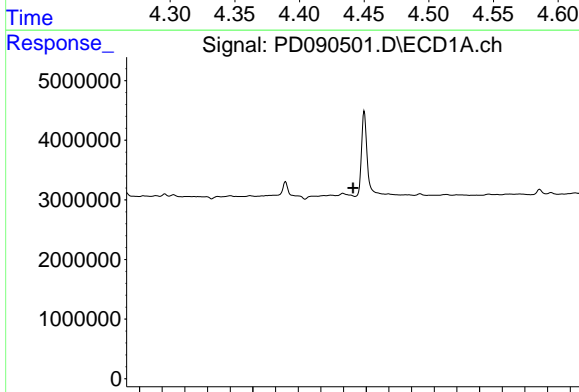
R.T.: 0.000 min
 Exp R.T.: 5.237 min
 Response: 0
 Conc: N.D.

Instrument :
 ECD_D
 ClientSampleId :
 SOIL-PILE-2-WC



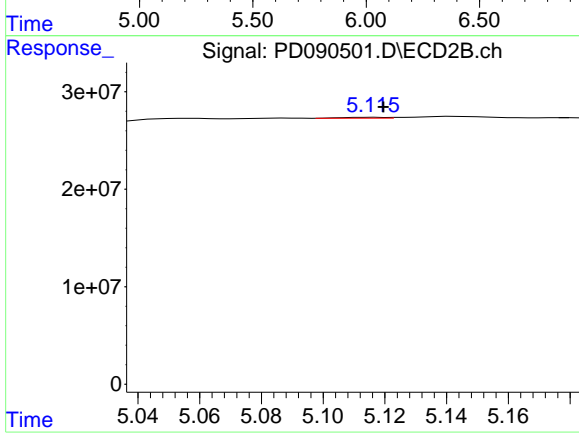
#24 Chlordane-2

R.T.: 4.446 min
 Delta R.T.: -0.035 min
 Response: 10548350
 Conc: 8.44 ng/ml



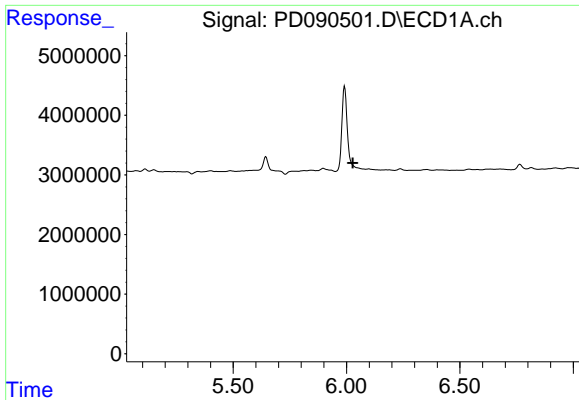
#25 Chlordane-3

R.T.: 0.000 min
 Exp R.T.: 5.942 min
 Response: 0
 Conc: N.D.



#25 Chlordane-3

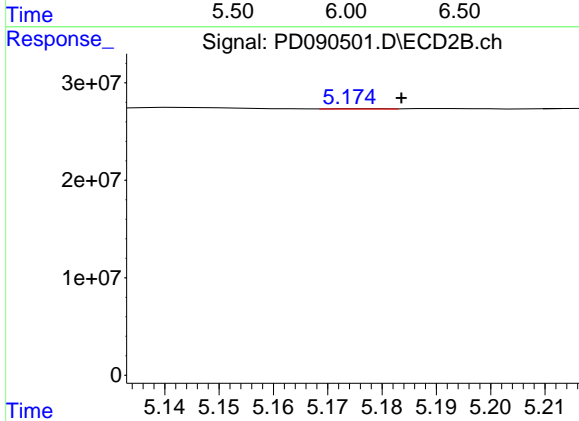
R.T.: 5.116 min
 Delta R.T.: -0.003 min
 Response: 912808
 Conc: 0.24 ng/ml



#26 Chlordane-4

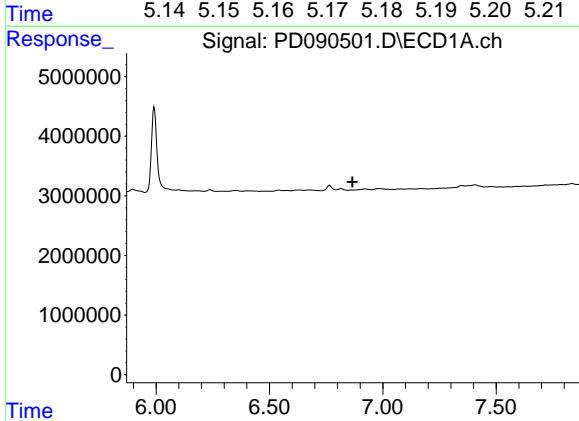
R.T.: 0.000 min
 Exp R.T. : 6.027 min
 Response: 0
 Conc: N.D.

Instrument :
 ECD_D
 ClientSampleId :
 SOIL-PILE-2-WC



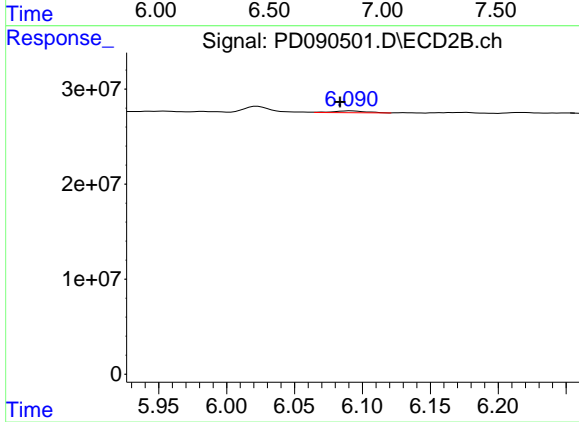
#26 Chlordane-4

R.T.: 5.176 min
 Delta R.T.: -0.008 min
 Response: 270938
 Conc: 0.08 ng/ml



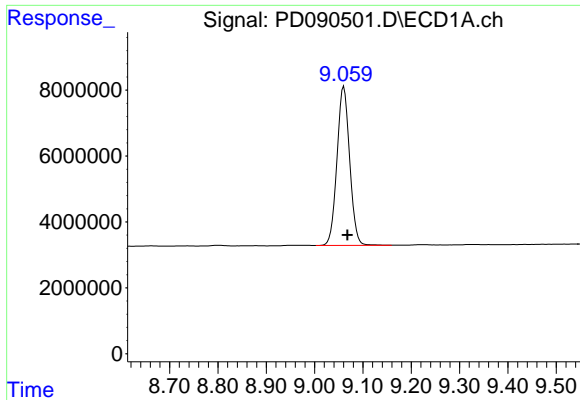
#27 Chlordane-5

R.T.: 0.000 min
 Exp R.T. : 6.867 min
 Response: 0
 Conc: N.D.



#27 Chlordane-5

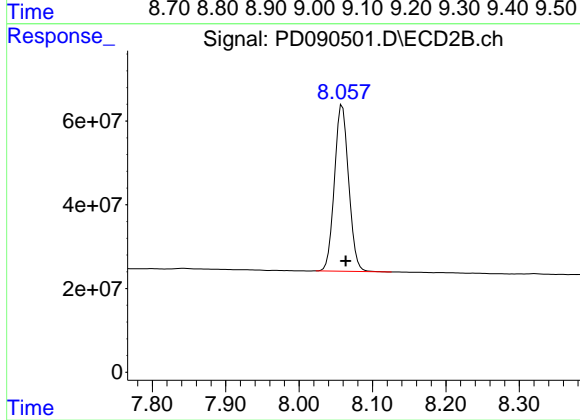
R.T.: 6.091 min
 Delta R.T.: 0.008 min
 Response: 3143146
 Conc: 2.07 ng/ml



#28 Decachlorobiphenyl

R.T.: 9.060 min
Delta R.T.: -0.007 min
Response: 88159682
Conc: 18.27 ng/ml

Instrument :
ECD_D
ClientSampleId :
SOIL-PILE-2-WC



#28 Decachlorobiphenyl

R.T.: 8.059 min
Delta R.T.: -0.005 min
Response: 535439040
Conc: 16.52 ng/ml