

Data Path : Z:\pestpcbsrv\HPCHEM1\ECD\_D\Data\PD100325\  
 Data File : PD090503.D  
 Signal(s) : Signal #1: ECD1A.ch Signal #2: ECD2B.ch  
 Acq On : 02 Oct 2025 16:52  
 Operator : AR\AJ  
 Sample : PSTDCCC050  
 Misc :  
 ALS Vial : 4 Sample Multiplier: 1

Instrument :  
 ECD\_D  
 ClientSampleId :  
 PSTDCCC050

Integration File signal 1: autoint1.e  
 Integration File signal 2: autoint2.e  
 Quant Time: Oct 03 02:46:04 2025  
 Quant Method : Z:\pestpcbsrv\HPCHEM1\ECD\_D\Method\PD091825.M  
 Quant Title : GC Extractables  
 QLast Update : Fri Sep 19 05:52:38 2025  
 Response via : Initial Calibration  
 Integrator: ChemStation

Volume Inj. : 1 µl  
 Signal #1 Phase : ZB-MR2 Signal #2 Phase: ZB-MR2  
 Signal #1 Info : 30M x 0.32mm x0.5 Signal #2 Info : 30M x 0.32mm x 0.25µm

Compound	RT#1	RT#2	Resp#1	Resp#2	ng/ml	ng/ml
-----						
System Monitoring Compounds						
1) SA Tetrachlo...	3.545	2.875	157.7E6	1232.6E6	48.521	44.905
28) SA Decachlor...	9.062	8.060	247.5E6	1534.2E6	51.304	47.329
Target Compounds						
2) A alpha-BHC	3.994	3.387	381.8E6	2137.0E6	54.668	48.809
3) MA gamma-BHC...	4.325	3.723	360.3E6	1977.2E6	54.452	48.537
4) MA Heptachlor	4.923	4.075	369.2E6	1990.4E6	55.835	48.883
5) MB Aldrin	5.264	4.360	353.1E6	1933.9E6	55.600	48.427
6) B beta-BHC	4.511	4.019	133.1E6	805.4E6	51.578	46.460
7) B delta-BHC	4.760	4.255	38763695	1994.0E6	6.003	48.286 #
8) B Heptachlo...	5.684	4.864	324.9E6	1779.1E6	56.858	48.259
9) A Endosulfan I	6.067	5.237	294.9E6	1531.5E6	54.594	44.257
10) B gamma-Chl...	5.939	5.116	316.3E6	1888.5E6	55.369	48.070
11) B alpha-Chl...	6.020	5.181	317.6E6	1805.3E6	55.137	47.931
12) B 4,4'-DDE	6.189	5.366	286.8E6	1867.4E6	55.068	48.785
13) MA Dieldrin	6.340	5.503	328.0E6	1907.8E6	56.899	48.985
14) MA Endrin	6.567	5.780	283.2E6	1801.6E6	57.866	50.278
15) B Endosulfa...	6.779	6.071	296.7E6	1641.9E6	60.828	48.647
16) A 4,4'-DDD	6.698	5.920	245.1E6	1554.5E6	59.823	47.936
17) MA 4,4'-DDT	7.014	6.173	259.3E6	1652.2E6	58.243	48.059
18) B Endrin al...	6.908	6.249	210.6E6	1231.8E6	61.384	52.315
19) B Endosulfa...	7.142	6.473	259.0E6	1609.4E6	56.301	49.233
20) A Methoxychlor	7.486	6.743	136.3E6	846.0E6	57.833	48.619
21) B Endrin ke...	7.623	6.981	281.4E6	1588.4E6	56.869	43.996
22) Mirex	8.105	7.174	188.4E6	1191.9E6	50.847	43.177
23) Chlordane-1	0.000	3.886	0	12654627	N.D.	10.515 #
24) Chlordane-2	5.264f	4.498	353.1E6	60810181	1645.212	48.630 #
25) Chlordane-3	5.939	5.116	316.3E6	1888.5E6	377.850	498.210 #
26) Chlordane-4	6.020	5.181	317.6E6	1805.3E6	311.243	554.455 #
27) Chlordane-5	0.000	6.071	0	1641.9E6	N.D.	1081.880 #

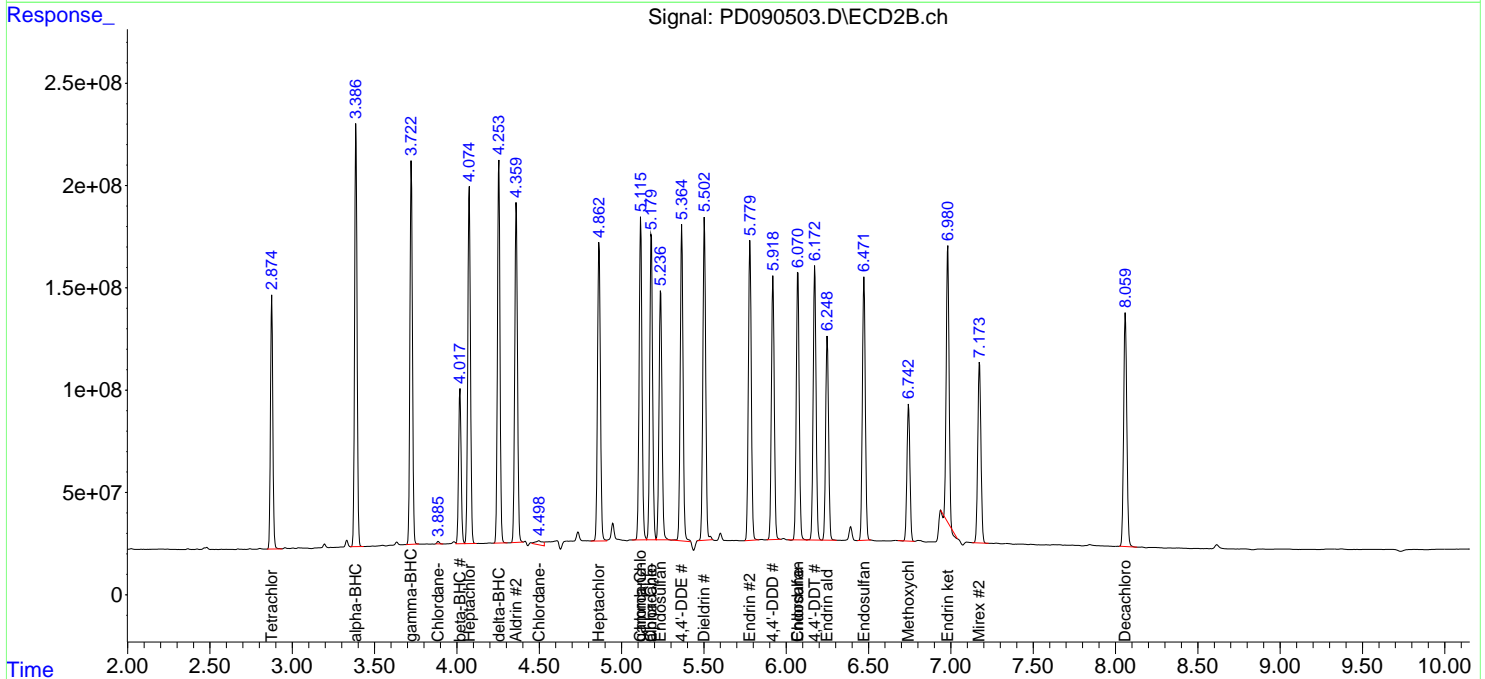
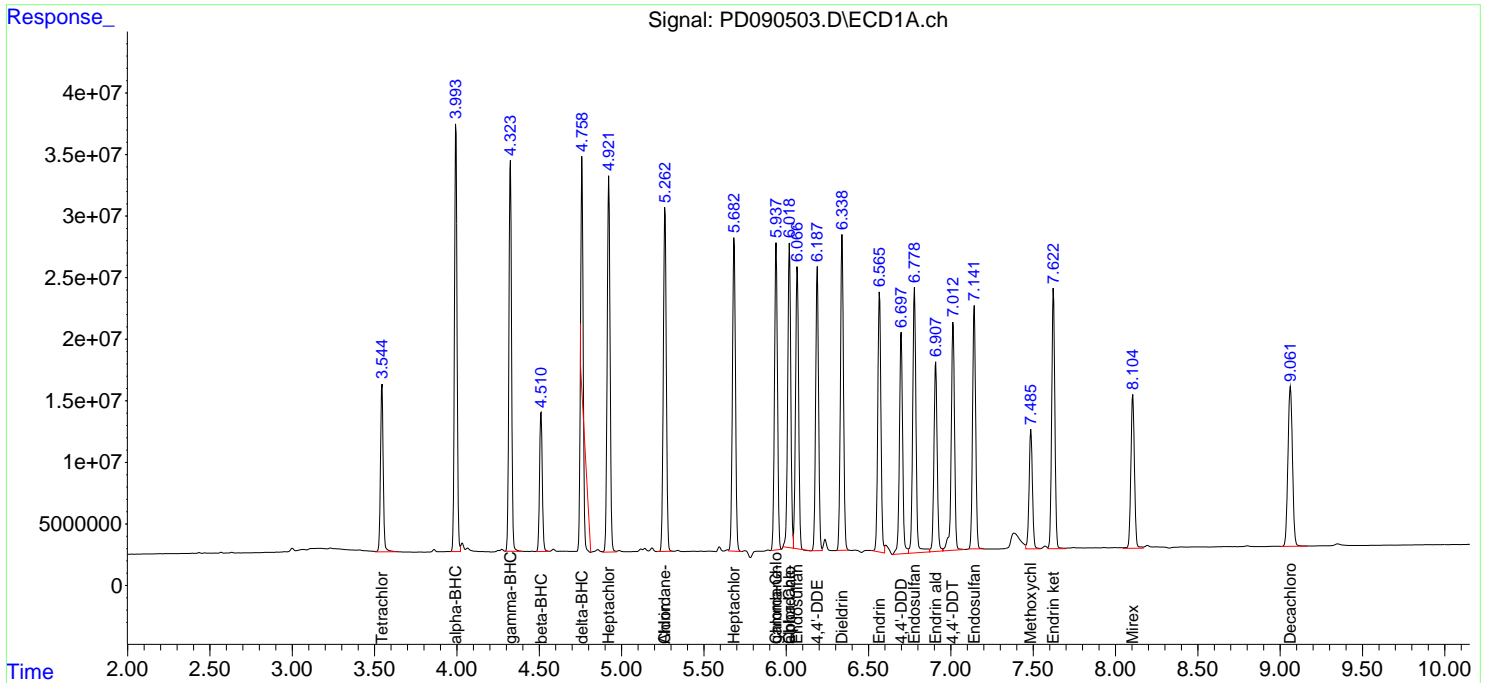
(f)=RT Delta > 1/2 Window (#)=Amounts differ by > 25% (m)=manual int.

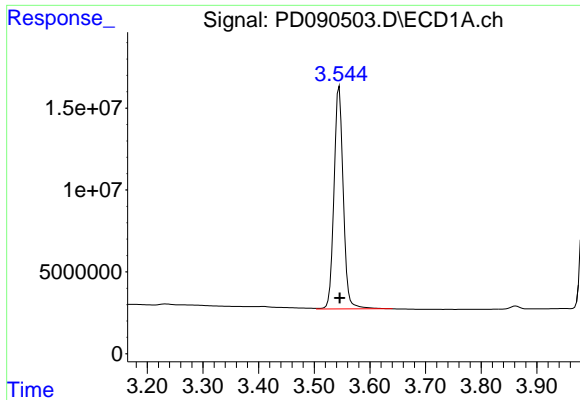
Data Path : Z:\pestpcbsrv\HPCHEM1\ECD\_D\Data\PD100325\  
 Data File : PD090503.D  
 Signal(s) : Signal #1: ECD1A.ch Signal #2: ECD2B.ch  
 Acq On : 02 Oct 2025 16:52  
 Operator : AR\AJ  
 Sample : PSTDCCC050  
 Misc :  
 ALS Vial : 4 Sample Multiplier: 1

Instrument :  
 ECD\_D  
 ClientSampleId :  
 PSTDCCC050

Integration File signal 1: autoint1.e  
 Integration File signal 2: autoint2.e  
 Quant Time: Oct 03 02:46:04 2025  
 Quant Method : Z:\pestpcbsrv\HPCHEM1\ECD\_D\Method\PD091825.M  
 Quant Title : GC Extractables  
 QLast Update : Fri Sep 19 05:52:38 2025  
 Response via : Initial Calibration  
 Integrator: ChemStation

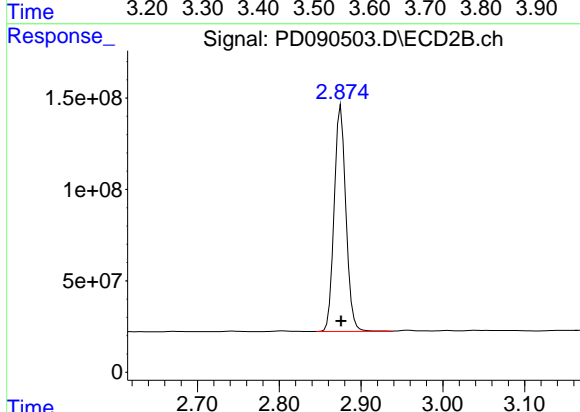
Volume Inj. : 1 µl  
 Signal #1 Phase : ZB-MR1 Signal #2 Phase: ZB-MR2  
 Signal #1 Info : 30M x 0.32mm x0.5 Signal #2 Info : 30M x 0.32mm x 0.25µm



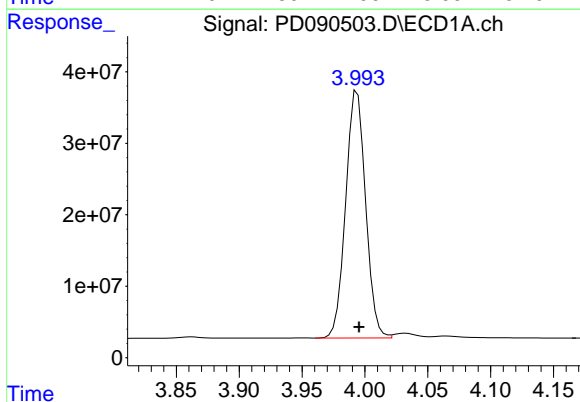


#1 Tetrachloro-m-xylene  
 R.T.: 3.545 min  
 Delta R.T.: -0.001 min  
 Response: 157716231  
 Conc: 48.52 ng/ml

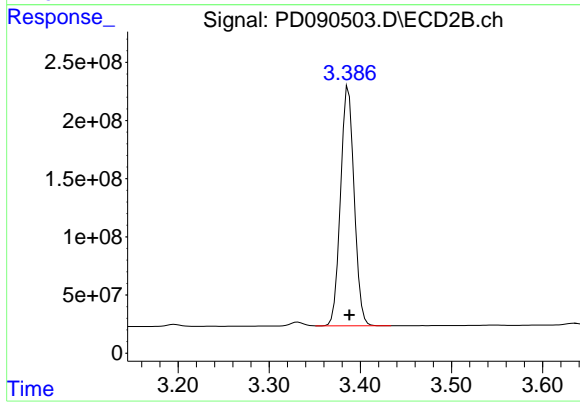
Instrument :  
 ECD\_D  
 ClientSampleId :  
 PSTDCCC050



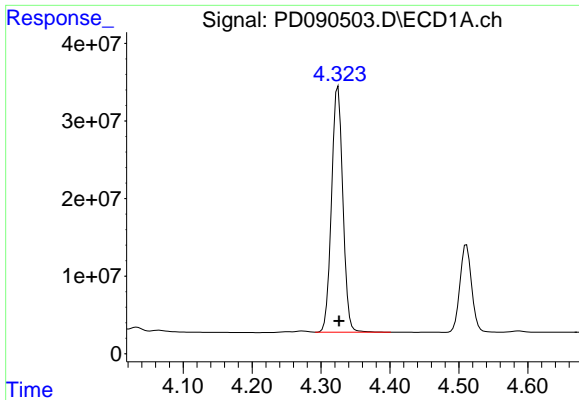
#1 Tetrachloro-m-xylene  
 R.T.: 2.875 min  
 Delta R.T.: 0.000 min  
 Response: 1232629786  
 Conc: 44.90 ng/ml



#2 alpha-BHC  
 R.T.: 3.994 min  
 Delta R.T.: -0.001 min  
 Response: 381827316  
 Conc: 54.67 ng/ml

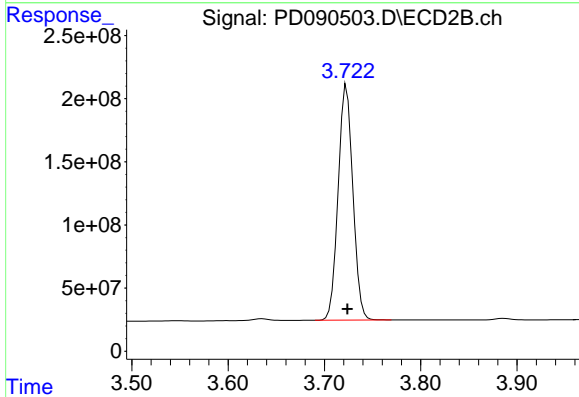


#2 alpha-BHC  
 R.T.: 3.387 min  
 Delta R.T.: 0.000 min  
 Response: 2137018559  
 Conc: 48.81 ng/ml

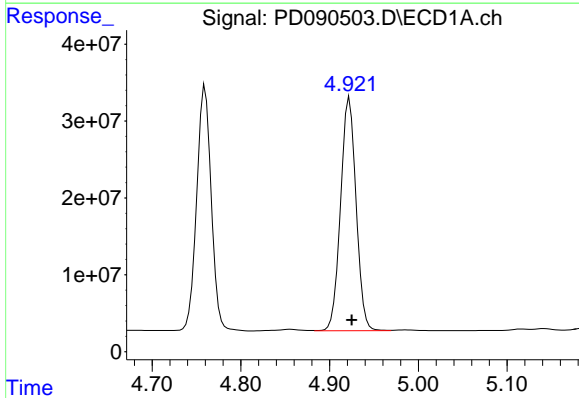


#3 gamma-BHC (Lindane)  
 R.T.: 4.325 min  
 Delta R.T.: -0.001 min  
 Response: 360299792  
 Conc: 54.45 ng/ml

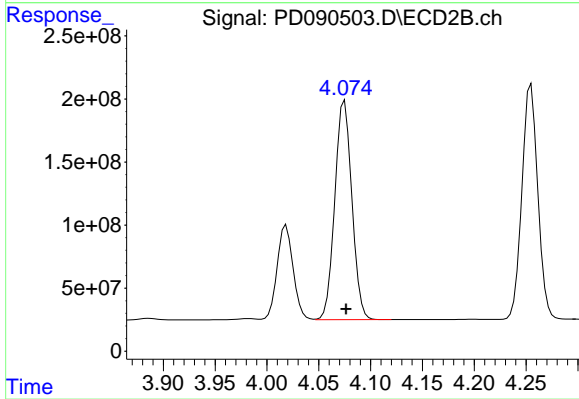
Instrument :  
 ECD\_D  
 ClientSampleId :  
 PSTDCCC050



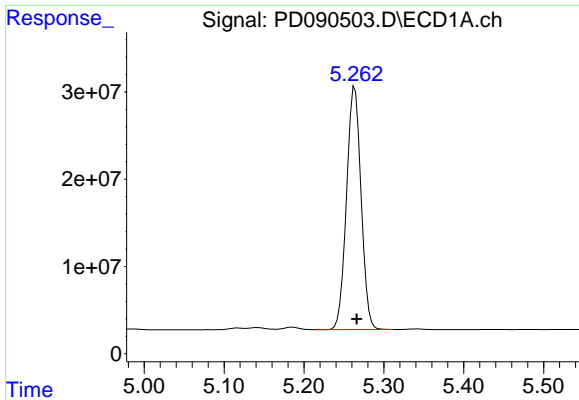
#3 gamma-BHC (Lindane)  
 R.T.: 3.723 min  
 Delta R.T.: 0.000 min  
 Response: 1977183720  
 Conc: 48.54 ng/ml



#4 Heptachlor  
 R.T.: 4.923 min  
 Delta R.T.: -0.003 min  
 Response: 369213924  
 Conc: 55.84 ng/ml



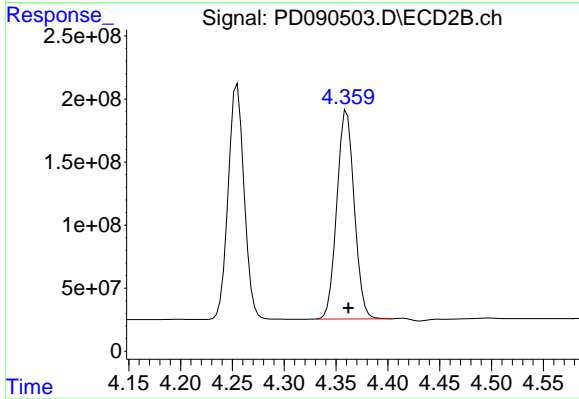
#4 Heptachlor  
 R.T.: 4.075 min  
 Delta R.T.: -0.001 min  
 Response: 1990362210  
 Conc: 48.88 ng/ml



#5 Aldrin

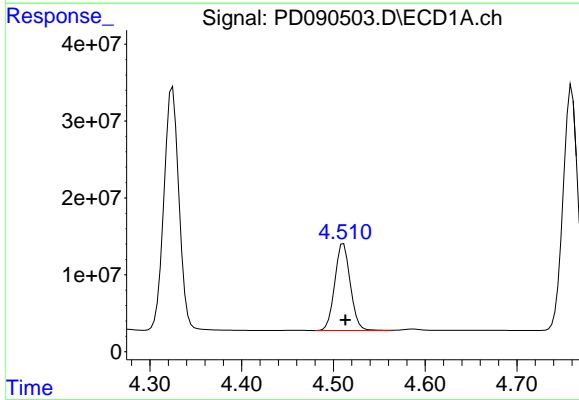
R.T.: 5.264 min  
 Delta R.T.: -0.003 min  
 Response: 353055257  
 Conc: 55.60 ng/ml

Instrument :  
 ECD\_D  
 ClientSampleId :  
 PSTDCCC050



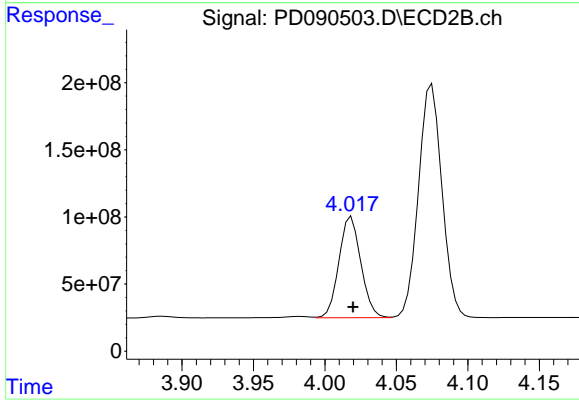
#5 Aldrin

R.T.: 4.360 min  
 Delta R.T.: -0.002 min  
 Response: 1933934131  
 Conc: 48.43 ng/ml



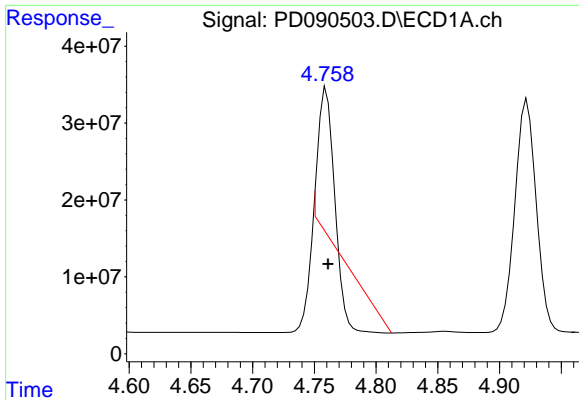
#6 beta-BHC

R.T.: 4.511 min  
 Delta R.T.: -0.002 min  
 Response: 133066480  
 Conc: 51.58 ng/ml



#6 beta-BHC

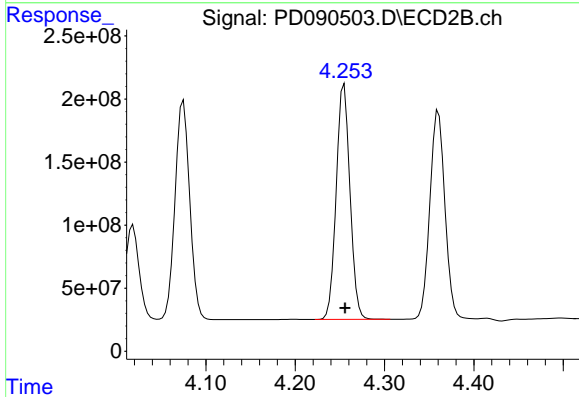
R.T.: 4.019 min  
 Delta R.T.: -0.001 min  
 Response: 805392905  
 Conc: 46.46 ng/ml



#7 delta-BHC

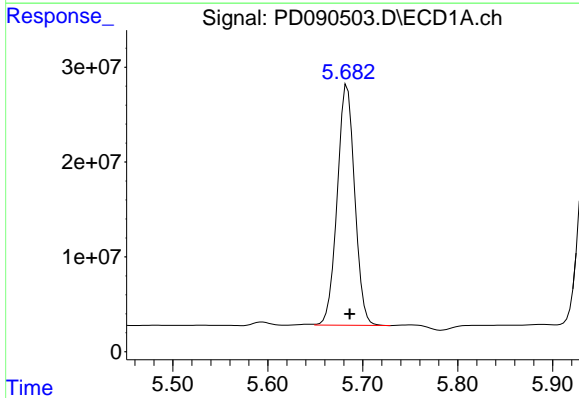
R.T.: 4.760 min  
 Delta R.T.: -0.001 min  
 Response: 38763695  
 Conc: 6.00 ng/ml

Instrument :  
 ECD\_D  
 ClientSampleId :  
 PSTDCCC050



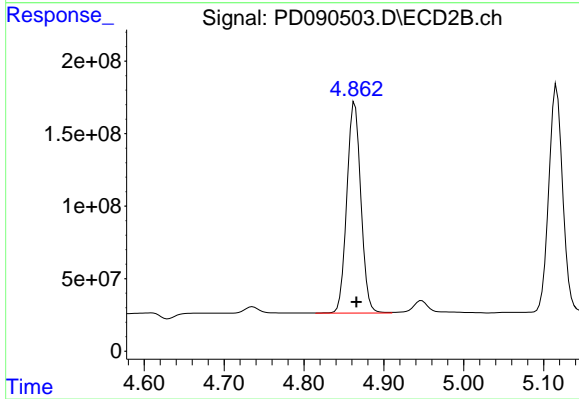
#7 delta-BHC

R.T.: 4.255 min  
 Delta R.T.: -0.001 min  
 Response: 1993951590  
 Conc: 48.29 ng/ml



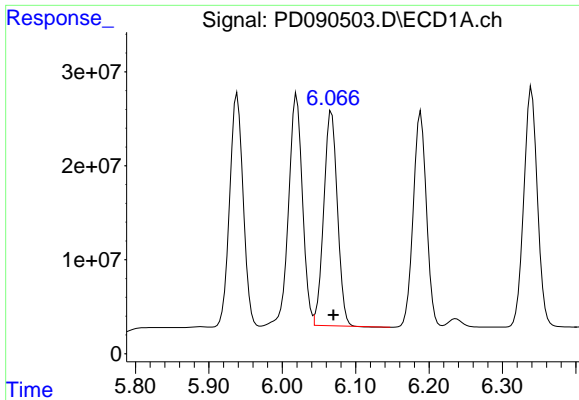
#8 Heptachlor epoxide

R.T.: 5.684 min  
 Delta R.T.: -0.003 min  
 Response: 324939357  
 Conc: 56.86 ng/ml



#8 Heptachlor epoxide

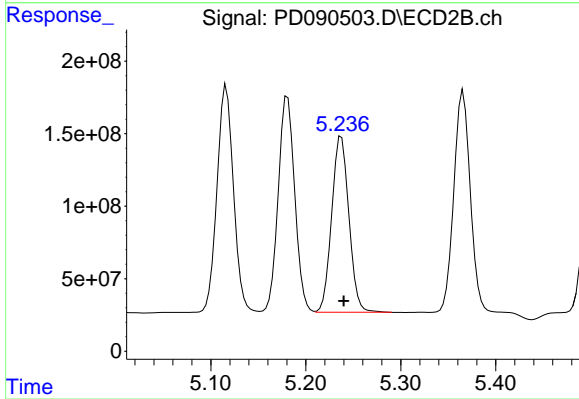
R.T.: 4.864 min  
 Delta R.T.: -0.002 min  
 Response: 1779054280  
 Conc: 48.26 ng/ml



#9 Endosulfan I

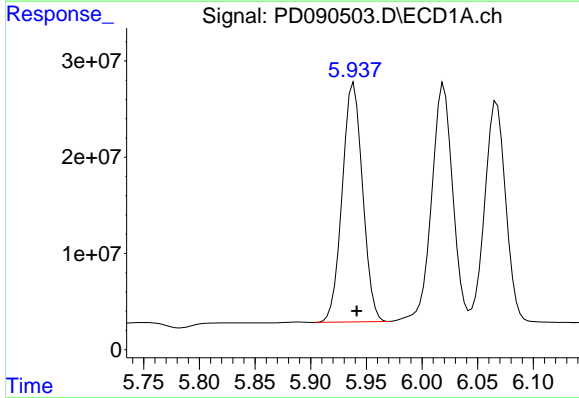
R.T.: 6.067 min  
 Delta R.T.: -0.002 min  
 Response: 294886928  
 Conc: 54.59 ng/ml

Instrument :  
 ECD\_D  
 ClientSampleId :  
 PSTDCCC050



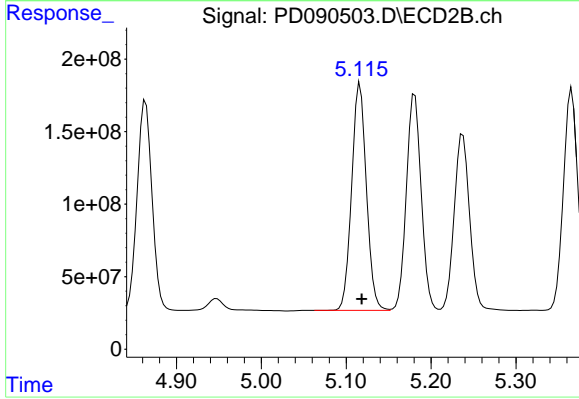
#9 Endosulfan I

R.T.: 5.237 min  
 Delta R.T.: -0.002 min  
 Response: 1531504349  
 Conc: 44.26 ng/ml



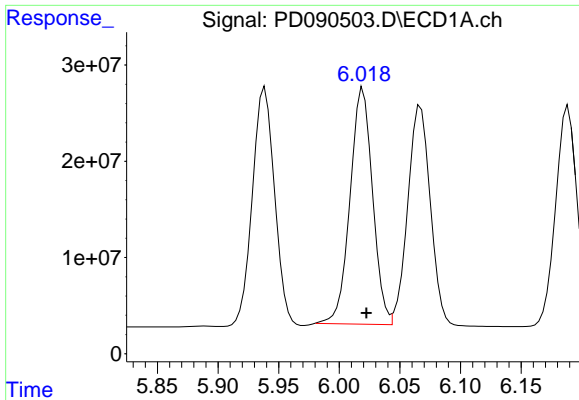
#10 gamma-Chlordane

R.T.: 5.939 min  
 Delta R.T.: -0.003 min  
 Response: 316265669  
 Conc: 55.37 ng/ml



#10 gamma-Chlordane

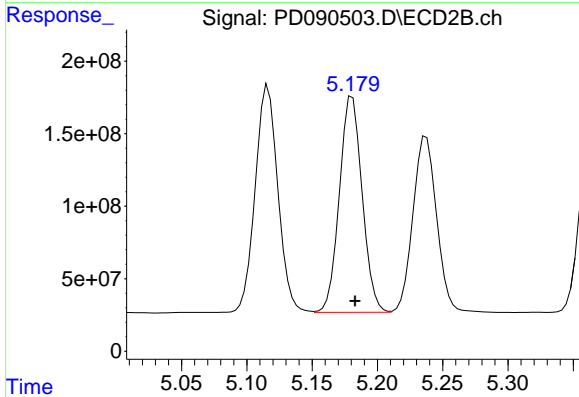
R.T.: 5.116 min  
 Delta R.T.: -0.002 min  
 Response: 1888501159  
 Conc: 48.07 ng/ml



#11 alpha-Chlordane

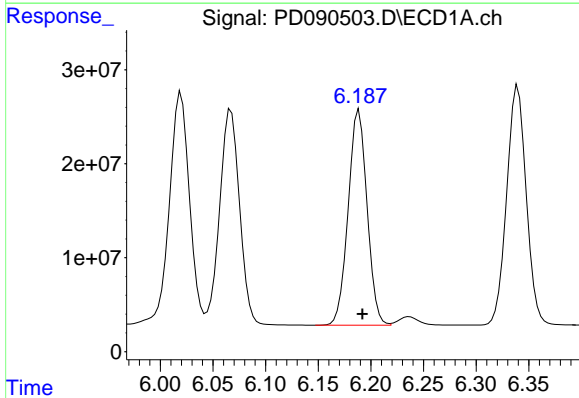
R.T.: 6.020 min  
 Delta R.T.: -0.003 min  
 Response: 317636561  
 Conc: 55.14 ng/ml

Instrument :  
 ECD\_D  
 ClientSampleId :  
 PSTDCCC050



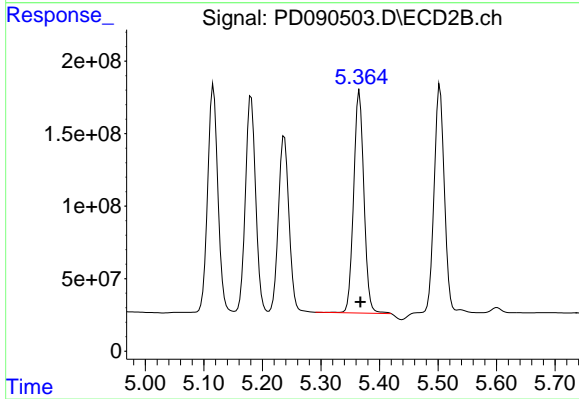
#11 alpha-Chlordane

R.T.: 5.181 min  
 Delta R.T.: -0.002 min  
 Response: 1805328373  
 Conc: 47.93 ng/ml



#12 4,4'-DDE

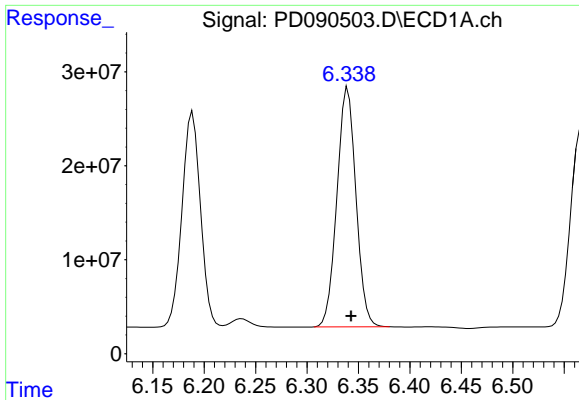
R.T.: 6.189 min  
 Delta R.T.: -0.003 min  
 Response: 286766916  
 Conc: 55.07 ng/ml



#12 4,4'-DDE

R.T.: 5.366 min  
 Delta R.T.: -0.002 min  
 Response: 1867426923  
 Conc: 48.78 ng/ml

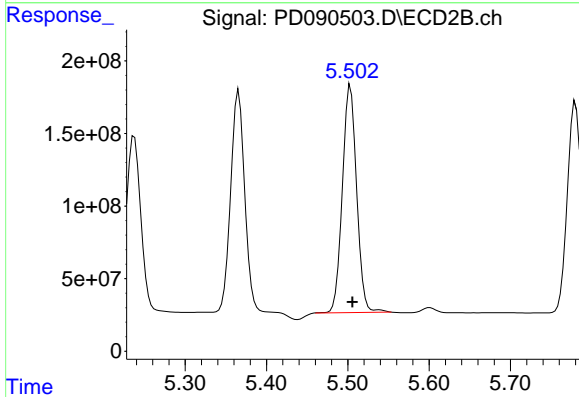




#13 Dieldrin

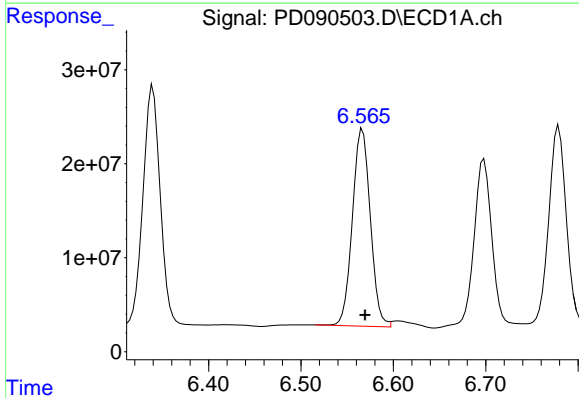
R.T.: 6.340 min  
 Delta R.T.: -0.003 min  
 Response: 328005179  
 Conc: 56.90 ng/ml

Instrument :  
 ECD\_D  
 ClientSampleId :  
 PSTDCCC050



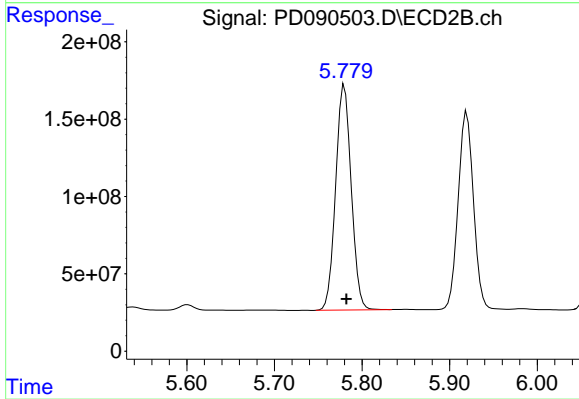
#13 Dieldrin

R.T.: 5.503 min  
 Delta R.T.: -0.002 min  
 Response: 1907782913  
 Conc: 48.99 ng/ml



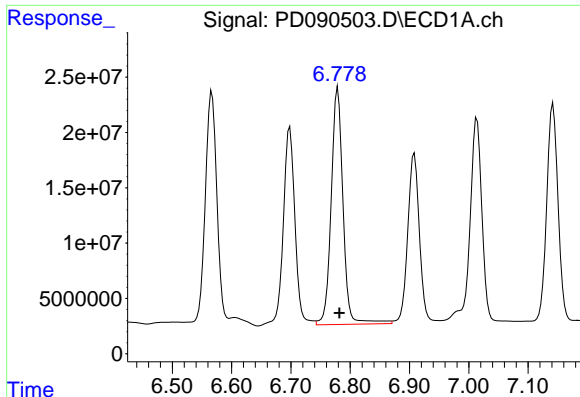
#14 Endrin

R.T.: 6.567 min  
 Delta R.T.: -0.003 min  
 Response: 283194760  
 Conc: 57.87 ng/ml



#14 Endrin

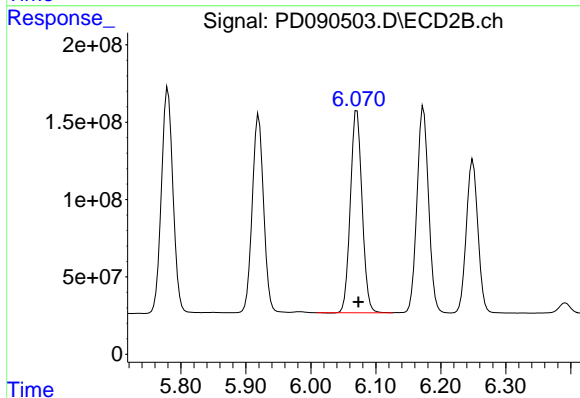
R.T.: 5.780 min  
 Delta R.T.: -0.002 min  
 Response: 1801554906  
 Conc: 50.28 ng/ml



#15 Endosulfan II

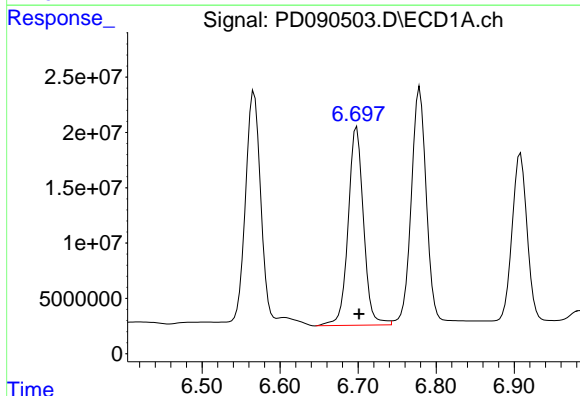
R.T.: 6.779 min  
 Delta R.T.: -0.002 min  
 Response: 296706033  
 Conc: 60.83 ng/ml

Instrument :  
 ECD\_D  
 ClientSampleId :  
 PSTDCCC050



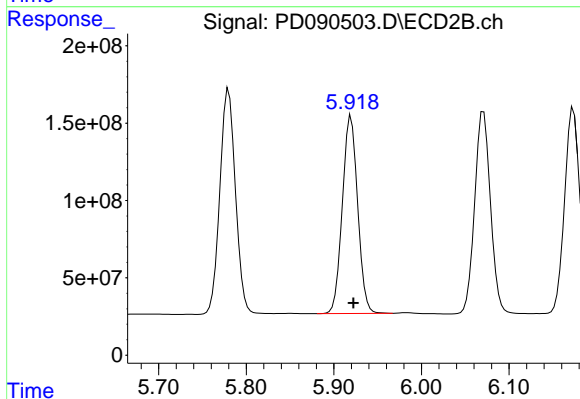
#15 Endosulfan II

R.T.: 6.071 min  
 Delta R.T.: -0.002 min  
 Response: 1641871587  
 Conc: 48.65 ng/ml



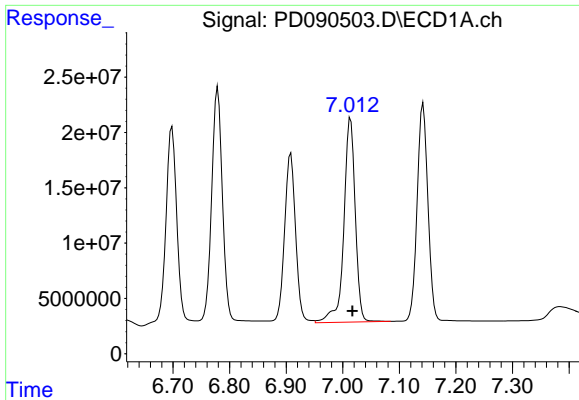
#16 4,4'-DDD

R.T.: 6.698 min  
 Delta R.T.: -0.003 min  
 Response: 245142167  
 Conc: 59.82 ng/ml



#16 4,4'-DDD

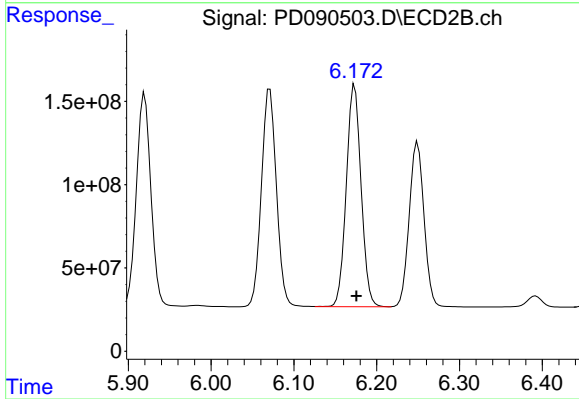
R.T.: 5.920 min  
 Delta R.T.: -0.003 min  
 Response: 1554469431  
 Conc: 47.94 ng/ml



#17 4,4'-DDT

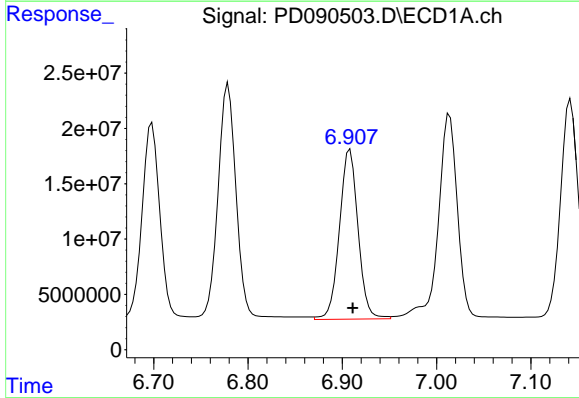
R.T.: 7.014 min  
 Delta R.T.: -0.003 min  
 Response: 259326087  
 Conc: 58.24 ng/ml

Instrument :  
 ECD\_D  
 ClientSampleId :  
 PSTDCCC050



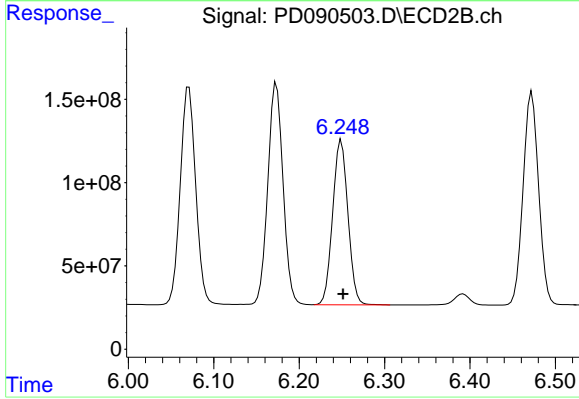
#17 4,4'-DDT

R.T.: 6.173 min  
 Delta R.T.: -0.002 min  
 Response: 1652231037  
 Conc: 48.06 ng/ml



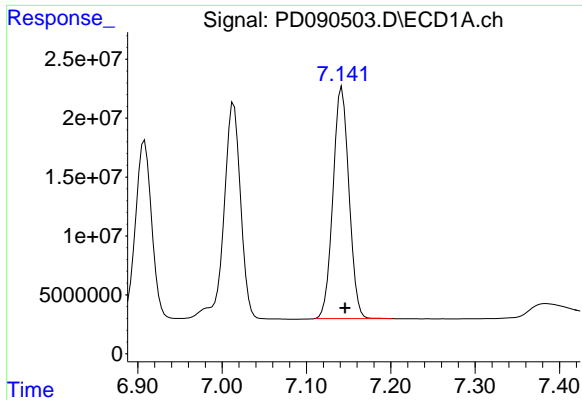
#18 Endrin aldehyde

R.T.: 6.908 min  
 Delta R.T.: -0.003 min  
 Response: 210582591  
 Conc: 61.38 ng/ml



#18 Endrin aldehyde

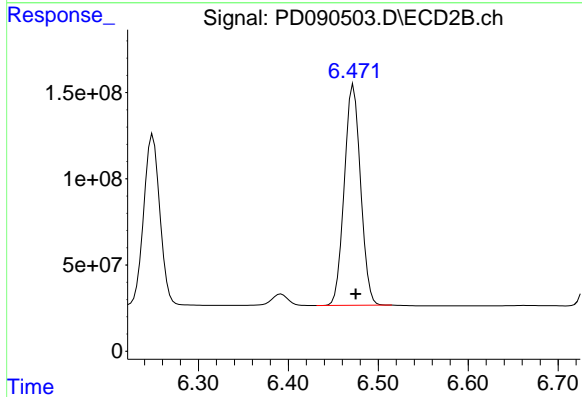
R.T.: 6.249 min  
 Delta R.T.: -0.002 min  
 Response: 1231842264  
 Conc: 52.31 ng/ml



#19 Endosulfan Sulfate

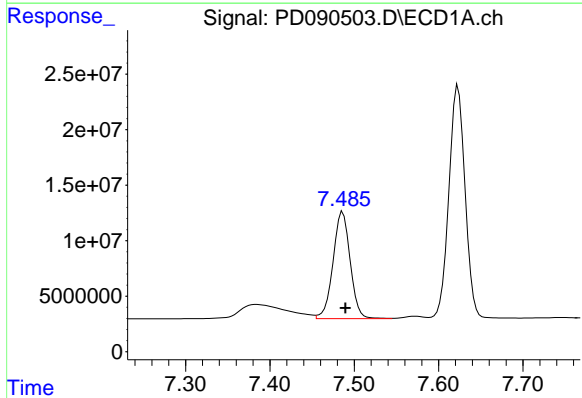
R.T.: 7.142 min  
 Delta R.T.: -0.003 min  
 Response: 259006272  
 Conc: 56.30 ng/ml

Instrument :  
 ECD\_D  
 ClientSampleId :  
 PSTDCCC050



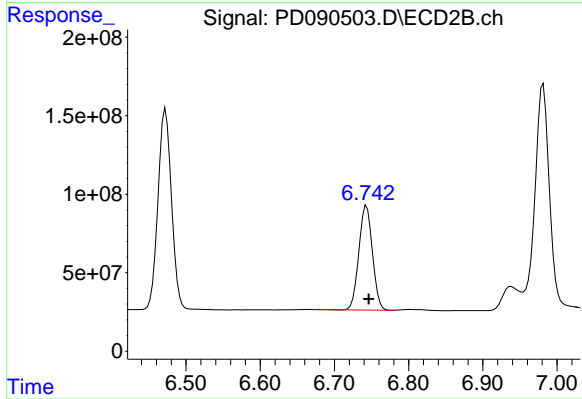
#19 Endosulfan Sulfate

R.T.: 6.473 min  
 Delta R.T.: -0.002 min  
 Response: 1609444904  
 Conc: 49.23 ng/ml



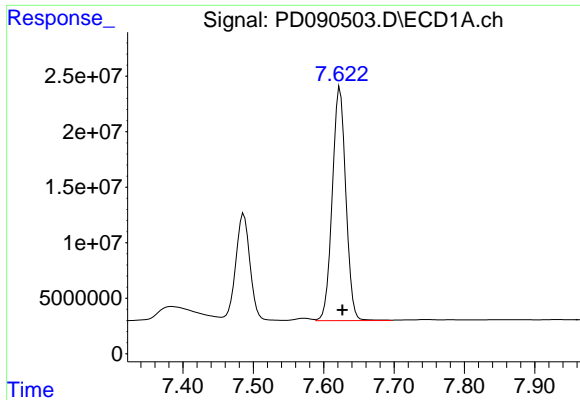
#20 Methoxychlor

R.T.: 7.486 min  
 Delta R.T.: -0.003 min  
 Response: 136284680  
 Conc: 57.83 ng/ml



#20 Methoxychlor

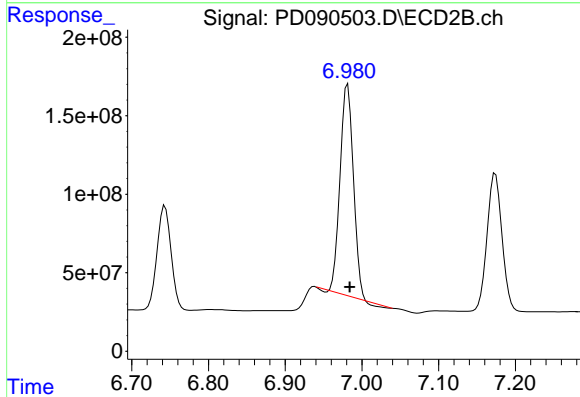
R.T.: 6.743 min  
 Delta R.T.: -0.003 min  
 Response: 845990933  
 Conc: 48.62 ng/ml



#21 Endrin ketone

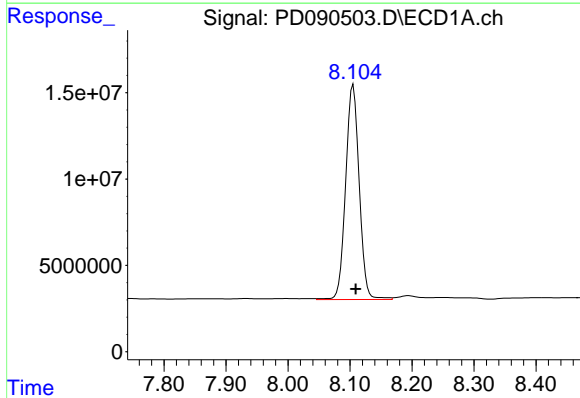
R.T.: 7.623 min  
 Delta R.T.: -0.004 min  
 Response: 281354073  
 Conc: 56.87 ng/ml

Instrument :  
 ECD\_D  
 ClientSampleId :  
 PSTDCCC050



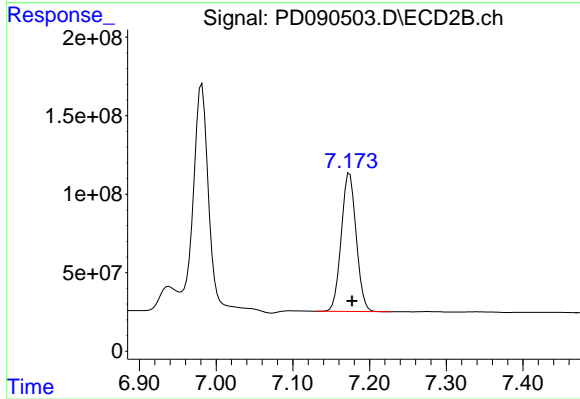
#21 Endrin ketone

R.T.: 6.981 min  
 Delta R.T.: -0.003 min  
 Response: 1588380263  
 Conc: 44.00 ng/ml



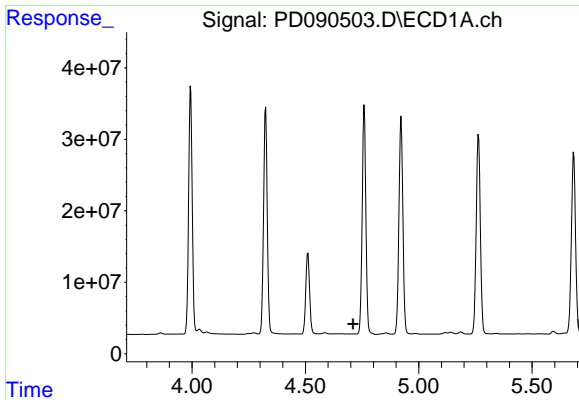
#22 Mirex

R.T.: 8.105 min  
 Delta R.T.: -0.004 min  
 Response: 188380382  
 Conc: 50.85 ng/ml



#22 Mirex

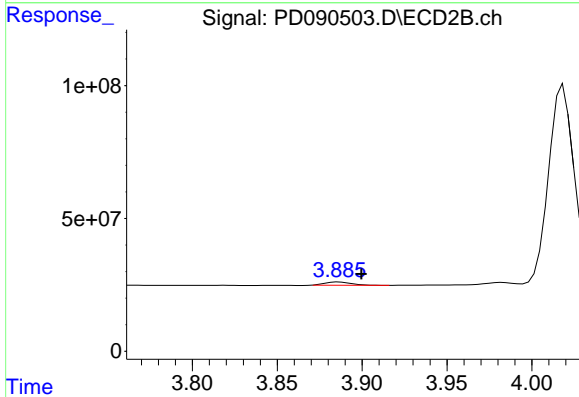
R.T.: 7.174 min  
 Delta R.T.: -0.003 min  
 Response: 1191949222  
 Conc: 43.18 ng/ml



#23 Chlordane-1

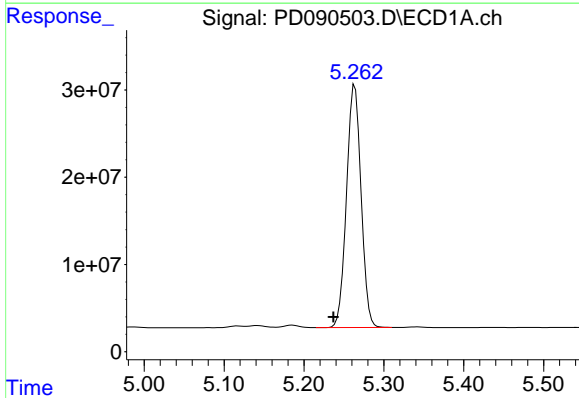
R.T.: 0.000 min  
 Exp R.T.: 4.710 min  
 Response: 0  
 Conc: N.D.

Instrument :  
 ECD\_D  
 ClientSampleId :  
 PSTDCCC050



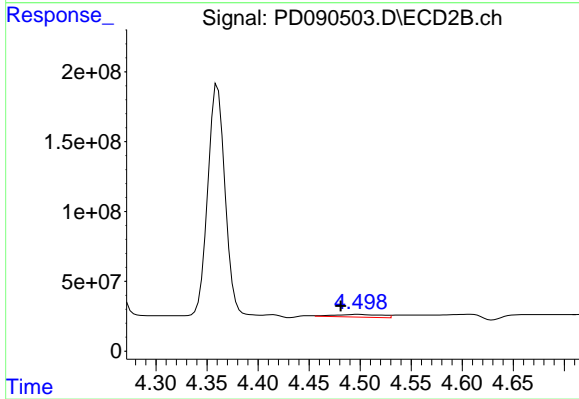
#23 Chlordane-1

R.T.: 3.886 min  
 Delta R.T.: -0.013 min  
 Response: 12654627  
 Conc: 10.51 ng/ml



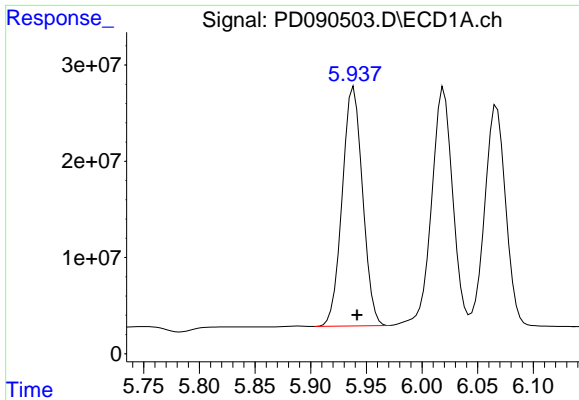
#24 Chlordane-2

R.T.: 5.264 min  
 Delta R.T.: 0.027 min  
 Response: 353055257  
 Conc: 1645.21 ng/ml



#24 Chlordane-2

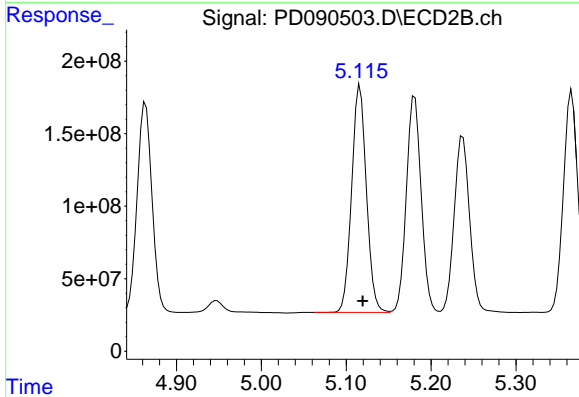
R.T.: 4.498 min  
 Delta R.T.: 0.017 min  
 Response: 60810181  
 Conc: 48.63 ng/ml



#25 Chlordane-3

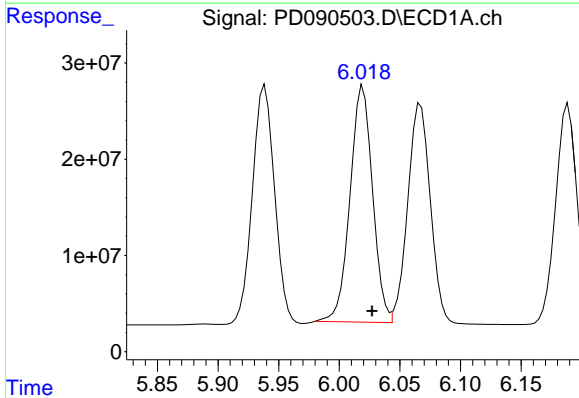
R.T.: 5.939 min  
 Delta R.T.: -0.003 min  
 Response: 316265669  
 Conc: 377.85 ng/ml

Instrument :  
 ECD\_D  
 ClientSampleId :  
 PSTDCCC050



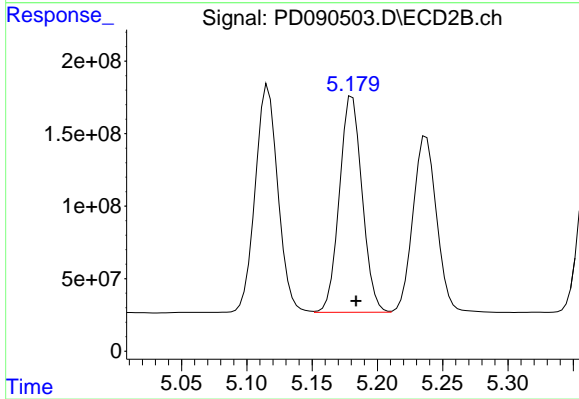
#25 Chlordane-3

R.T.: 5.116 min  
 Delta R.T.: -0.003 min  
 Response: 1888501159  
 Conc: 498.21 ng/ml



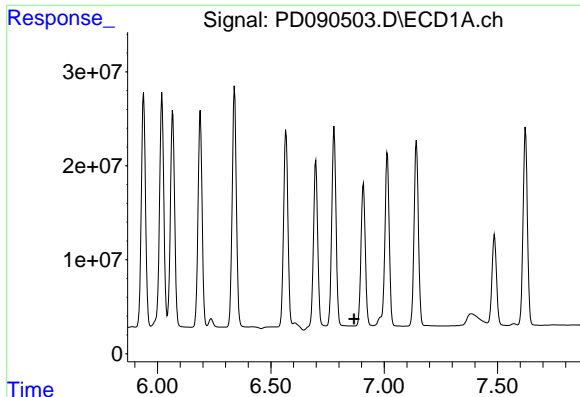
#26 Chlordane-4

R.T.: 6.020 min  
 Delta R.T.: -0.008 min  
 Response: 317636561  
 Conc: 311.24 ng/ml



#26 Chlordane-4

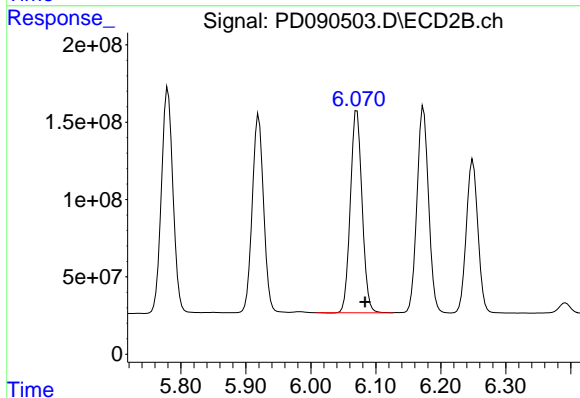
R.T.: 5.181 min  
 Delta R.T.: -0.003 min  
 Response: 1805328373  
 Conc: 554.45 ng/ml



#27 Chlordane-5

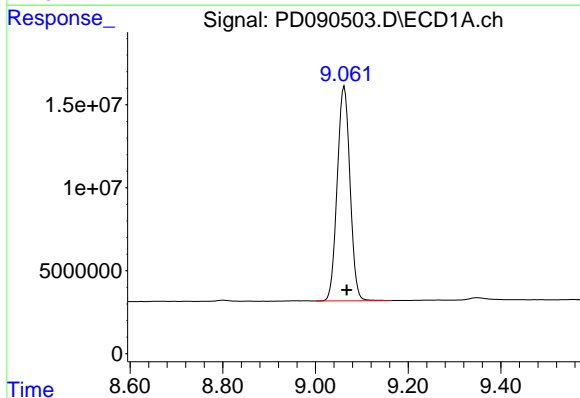
R.T.: 0.000 min  
 Exp R.T.: 6.867 min  
 Response: 0  
 Conc: N.D.

Instrument :  
 ECD\_D  
 ClientSampleId :  
 PSTDCCC050



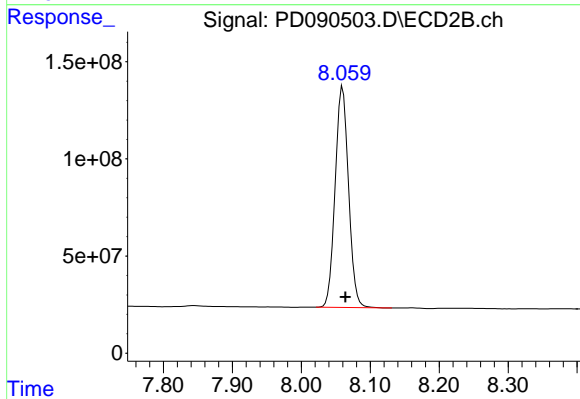
#27 Chlordane-5

R.T.: 6.071 min  
 Delta R.T.: -0.012 min  
 Response: 1641871587  
 Conc: 1081.88 ng/ml



#28 Decachlorobiphenyl

R.T.: 9.062 min  
 Delta R.T.: -0.005 min  
 Response: 247542756  
 Conc: 51.30 ng/ml



#28 Decachlorobiphenyl

R.T.: 8.060 min  
 Delta R.T.: -0.004 min  
 Response: 1534165112  
 Conc: 47.33 ng/ml