

Data Path : Z:\pestpcbsrv\HPCHEM1\ECD_D\Data\PD100418\
 Data File : PD049571.D
 Signal(s) : Signal #1: ECD1A.CH Signal #2: ECD2B.CH
 Acq On : 04 Oct 2018 15:34
 Operator : AJ\SJ
 Sample : TOXAPH301
 Misc :
 ALS Vial : 6 Sample Multiplier: 1

Instrument :
 ECD_D
 ClientSampleId :
 TOXAPH301

Integration File signal 1: autoint1.e
 Integration File signal 2: autoint2.e
 Quant Time: Oct 05 09:00:19 2018
 Quant Method : Z:\pestpcbsrv\HPCHEM1\ECD_D\Method\PD100418CLP.M
 Quant Title : GC Extractables
 QLast Update : Fri Oct 05 09:00:01 2018
 Response via : Initial Calibration
 Integrator: ChemStation 6890 Scale Mode: Large solvent peaks clipped

Volume Inj. : 1 µl
 Signal #1 Phase : ZB-MR2 Signal #2 Phase: ZB-MR1
 Signal #1 Info : 30M x 0.32mm x0.2 Signal #2 Info : 30M x 0.32mm x 0.50µm

Compound	RT#1	RT#2	Resp#1	Resp#2	ng/ml	ng/ml

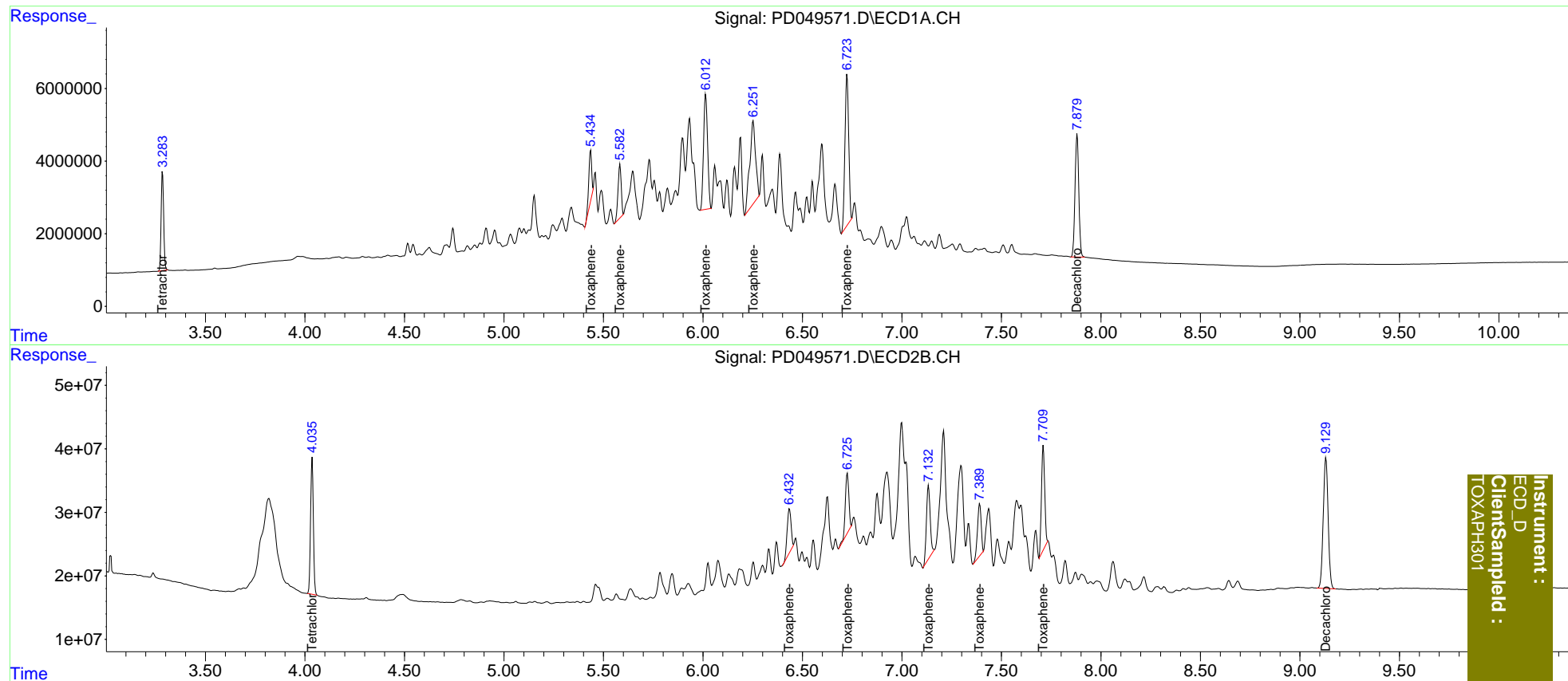
System Monitoring Compounds						
1) SA Tetrachlo...	3.285	4.037	24171144	209.2E6	20.000	20.000
27) SA Decachlor...	7.881	9.131	44639414	352.0E6	40.000	40.000
Target Compounds						
22) Toxaphene-1	5.436	6.435	13281483	97821713	2000.000	2000.000
23) Toxaphene-2	5.583	6.726	16248213	114.9E6	2000.000	2000.000
24) Toxaphene-3	6.014	7.134	44651410	149.6E6	2000.000	2000.000
25) Toxaphene-4	6.253	7.391	46362102	105.5E6	2000.000	2000.000
26) Toxaphene-5	6.724	7.710	54524274	190.2E6	2000.000	2000.000

(f)=RT Delta > 1/2 Window (#)=Amounts differ by > 25% (m)=manual int.

Data Path : Z:\pestpcbsrv\HPCHEM1\ECD_D\Data\PD100418\
 Data File : PD049571.D
 Signal(s) : Signal #1: ECD1A.CH Signal #2: ECD2B.CH
 Acq On : 04 Oct 2018 15:34
 Operator : AJ\SJ
 Sample : TOXAPH301
 Misc :
 ALS Vial : 6 Sample Multiplier: 1

Integration File signal 1: autoint1.e
 Integration File signal 2: autoint2.e
 Quant Time: Oct 05 09:00:19 2018
 Quant Method : Z:\pestpcbsrv\HPCHEM1\ECD_D\Method\PD100418CLP.M
 Quant Title : GC Extractables
 QLast Update : Fri Oct 05 09:00:01 2018
 Response via : Initial Calibration
 Integrator: ChemStation 6890 Scale Mode: Large solvent peaks clipped

Volume Inj. : 1 µl
 Signal #1 Phase : ZB-MR2 Signal #2 Phase: ZB-MR1
 Signal #1 Info : 30M x 0.32mm x0.2 Signal #2 Info : 30M x 0.32mm x 0.50µm



Instrument :
 ECD_D
 ClientSampleId :
 TOXAPH301