

Data Path : Z:\pestpcbsrv\HPCHEM1\ECD_D\Data\PD100423\
 Data File : PD078640.D
 Signal(s) : Signal #1: ECD1A.ch Signal #2: ECD2B.ch
 Acq On : 03 Oct 2023 22:36
 Operator : AR\AJ
 Sample : 04704-06
 Misc :
 ALS Vial : 48 Sample Multiplier: 1

Instrument :
 ECD_D
 ClientSampleId :

Integration File signal 1: autoint1.e
 Integration File signal 2: autoint2.e
 Quant Time: Oct 04 01:16:57 2023
 Quant Method : Z:\pestpcbsrv\HPCHEM1\ECD_D\Method\PD100323.M
 Quant Title : GC Extractables
 QLast Update : Tue Oct 03 01:10:04 2023
 Response via : Initial Calibration
 Integrator: ChemStation

Volume Inj. : 1 µl
 Signal #1 Phase : ZB-MR2 Signal #2 Phase: ZB-MR2
 Signal #1 Info : 30M x 0.32mm x0.5 Signal #2 Info : 30M x 0.32mm x 0.25µm

Compound	RT#1	RT#2	Resp#1	Resp#2	ng/ml	ng/ml

System Monitoring Compounds						
1) SA Tetrachlo...	3.539	2.758	19163134	28150567	6.638	13.783 #
28) SA Decachlor...	9.078	7.892	32756380	18983380	8.833	8.366
Target Compounds						
2) A alpha-BHC	4.024f	3.275f	3733965	1240968	0.769	0.414 #
3) MA gamma-BHC...	4.335	0.000	3026724	0	0.647	N.D. #
4) MA Heptachlor	0.000	3.947f	0	4411689	N.D.	1.495 #
5) MB Aldrin	5.253	4.209	2560096	2915773	0.530	0.983 #
6) B beta-BHC	4.553f	3.893	2086212	7181555	1.123	6.214 #
7) B delta-BHC	4.769	4.127	1183326	5662545	0.263	1.979 #
8) B Heptachlo...	5.686	4.707	751624	2025846	0.179	0.750 #
9) A Endosulfan I	6.062f	5.100f	2050821	2768031	0.525	1.101 #
10) B gamma-Chl...	5.967f	4.938f	4661450	14206341	1.110	5.286 #
11) B alpha-Chl...	6.028	5.016	5431277	12913042	1.289	4.809 #
12) B 4,4'-DDE	6.195	5.220	1961489	505197	0.490	0.199 #
13) MA Dieldrin	6.350	5.344	1416219	10704443	0.338	3.834 #
14) MA Endrin	6.581	5.620	7358848	1084710	2.191	0.438 #
16) A 4,4'-DDD	6.725	5.751	3727883	3589333	1.253	1.814 #
17) MA 4,4'-DDT	7.005f	6.010	5993031	5937649	2.025	2.917 #
18) B Endrin al...	6.942	6.109f	-82132	3108900	N.D.	1.677
19) B Endosulfa...	7.147f	6.309	983236	1695414	0.306	0.764 #
20) A Methoxychlor	0.000	6.565f	0	2385168	N.D.	2.186 #
21) B Endrin ke...	7.669	0.000	544798	0	0.152	N.D. #
23) Chlordane-1	4.706	3.753	701728	6136792	5.334	84.374 #
24) Chlordane-2	5.253f	4.302f	2560096	2049041	17.952	26.460 #
25) Chlordane-3	5.967f	4.938f	4661450	14206341	7.968	55.137 #
26) Chlordane-4	6.028	5.016	5431277	12913042	7.677	51.419 #

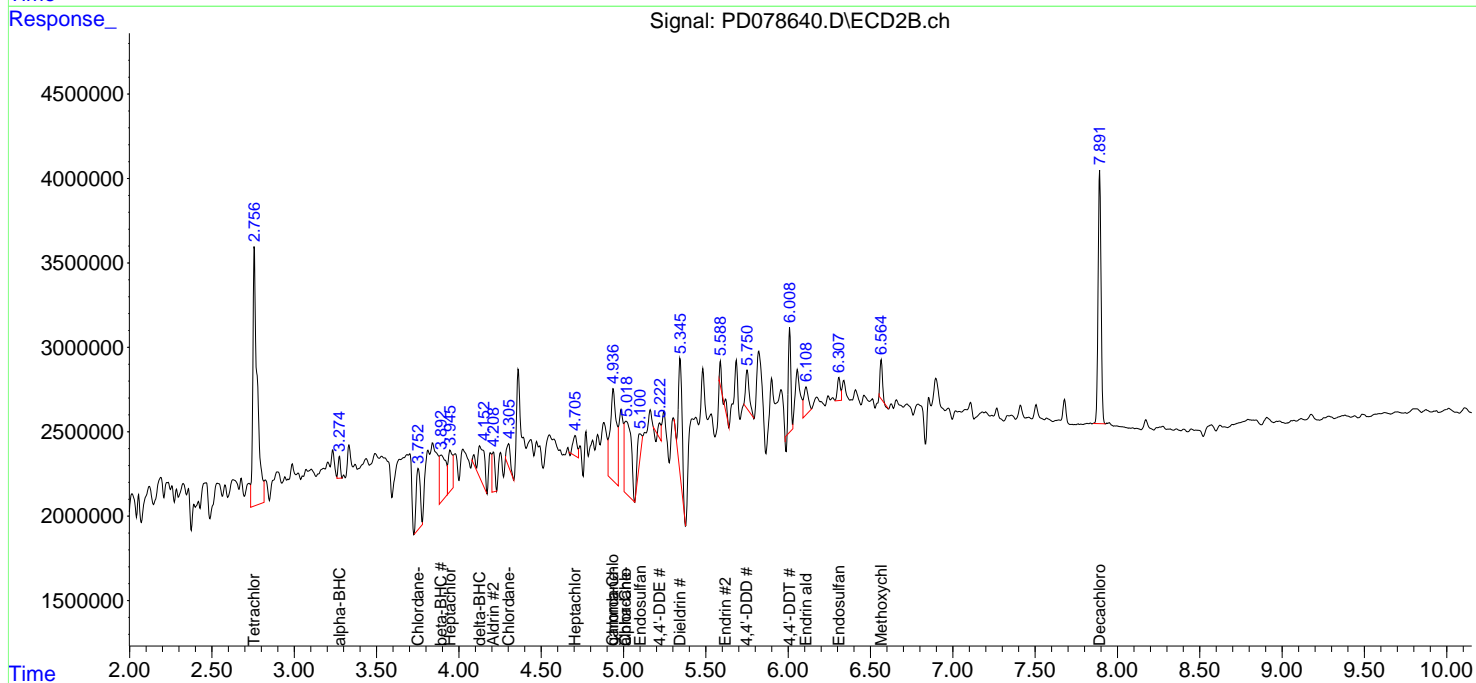
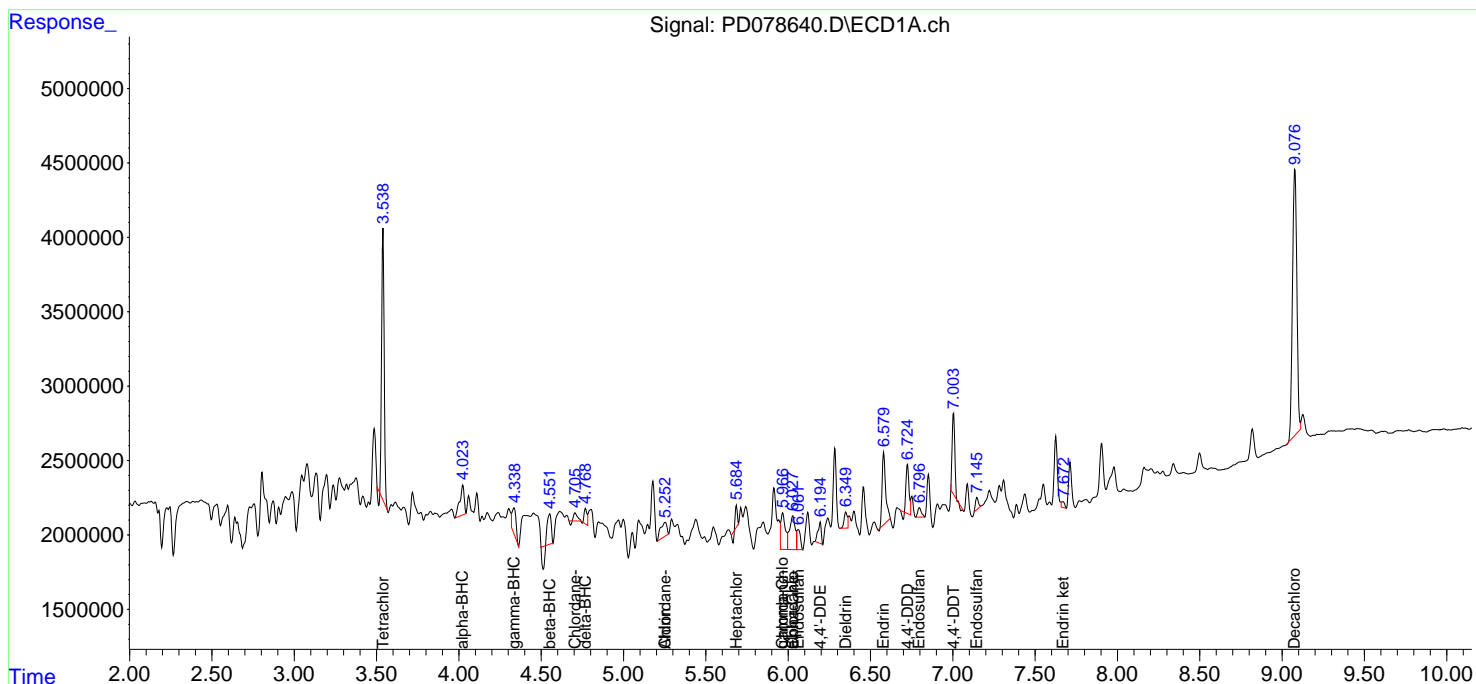
(f)=RT Delta > 1/2 Window (#)=Amounts differ by > 25% (m)=manual int.

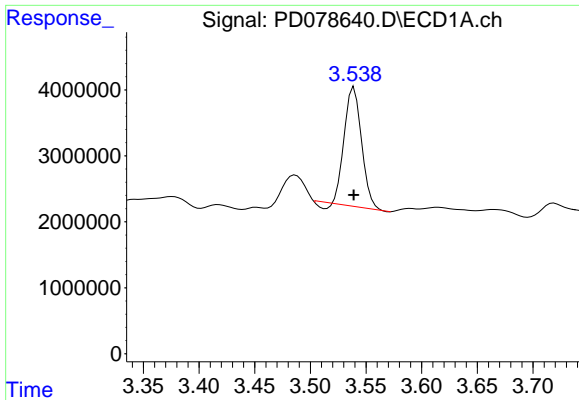
Data Path : Z:\pestpcbsrv\HPCHEM1\ECD_D\Data\PD100423\
 Data File : PD078640.D
 Signal(s) : Signal #1: ECD1A.ch Signal #2: ECD2B.ch
 Acq On : 03 Oct 2023 22:36
 Operator : AR\AJ
 Sample : 04704-06
 Misc :
 ALS Vial : 48 Sample Multiplier: 1

Instrument :
 ECD_D
 ClientSampleId :

Integration File signal 1: autoint1.e
 Integration File signal 2: autoint2.e
 Quant Time: Oct 04 01:16:57 2023
 Quant Method : Z:\pestpcbsrv\HPCHEM1\ECD_D\Method\PD100323.M
 Quant Title : GC Extractables
 QLast Update : Tue Oct 03 01:10:04 2023
 Response via : Initial Calibration
 Integrator: ChemStation

Volume Inj. : 1 µl
 Signal #1 Phase : ZB-MR1 Signal #2 Phase: ZB-MR2
 Signal #1 Info : 30M x 0.32mm x0.5 Signal #2 Info : 30M x 0.32mm x 0.25µm

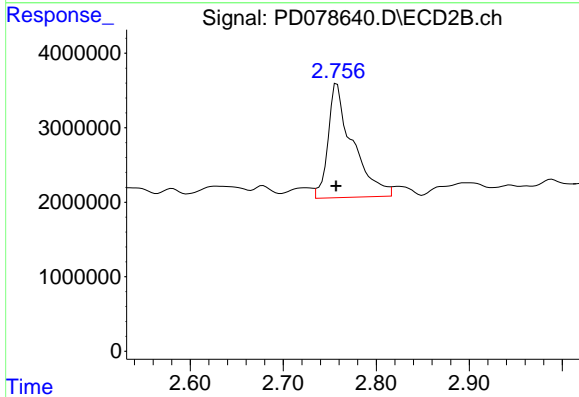




#1 Tetrachloro-m-xylene

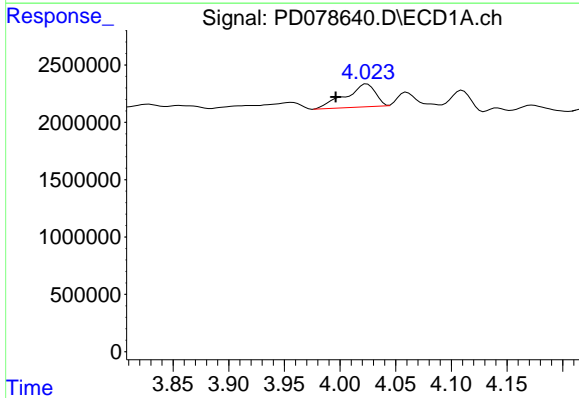
R.T.: 3.539 min
 Delta R.T.: 0.000 min
 Response: 19163134
 Conc: 6.64 ng/ml

Instrument :
 ECD_D
 ClientSampleId :



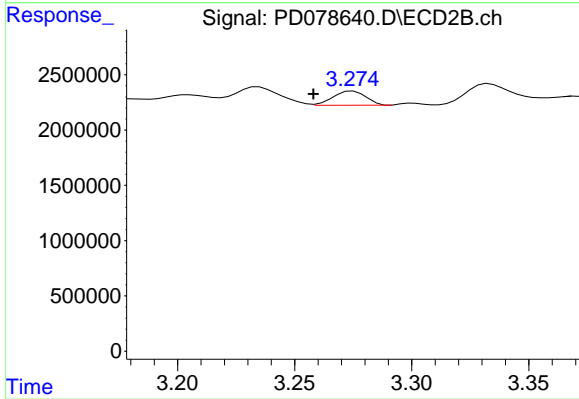
#1 Tetrachloro-m-xylene

R.T.: 2.758 min
 Delta R.T.: 0.000 min
 Response: 28150567
 Conc: 13.78 ng/ml



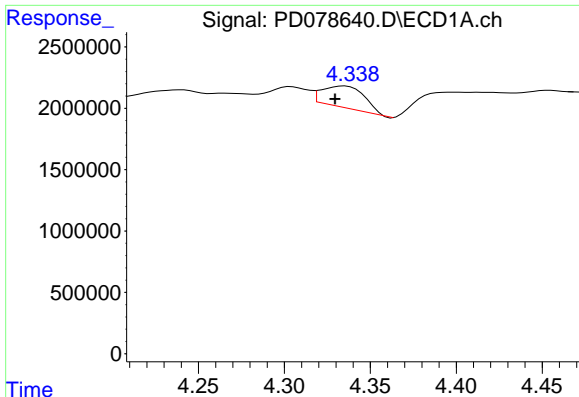
#2 alpha-BHC

R.T.: 4.024 min
 Delta R.T.: 0.028 min
 Response: 3733965
 Conc: 0.77 ng/ml



#2 alpha-BHC

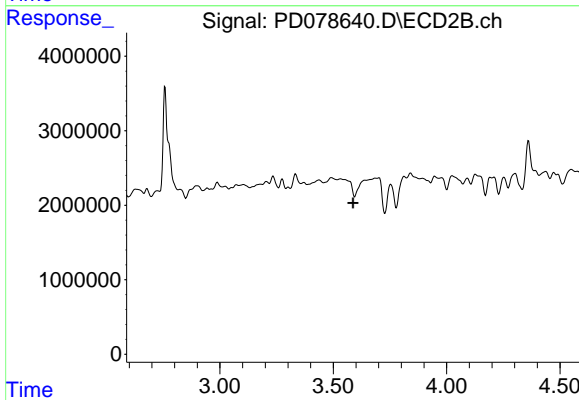
R.T.: 3.275 min
 Delta R.T.: 0.017 min
 Response: 1240968
 Conc: 0.41 ng/ml



#3 gamma-BHC (Lindane)

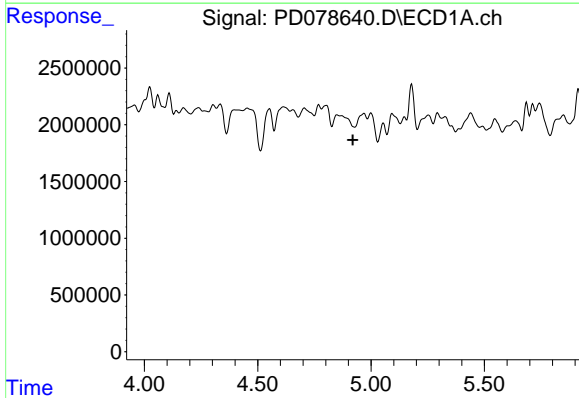
R.T.: 4.335 min
 Delta R.T.: 0.006 min
 Response: 3026724
 Conc: 0.65 ng/ml

Instrument :
 ECD_D
 ClientSampleId :



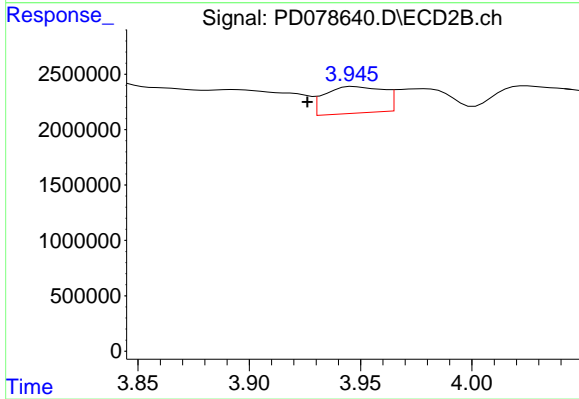
#3 gamma-BHC (Lindane)

R.T.: 0.000 min
 Exp R.T. : 3.587 min
 Response: 0
 Conc: N.D.



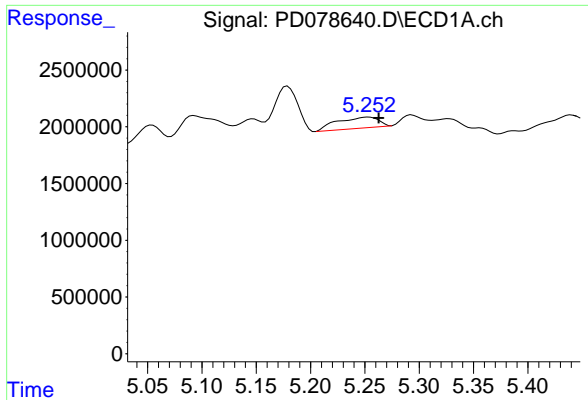
#4 Heptachlor

R.T.: 0.000 min
 Exp R.T. : 4.920 min
 Response: 0
 Conc: N.D.



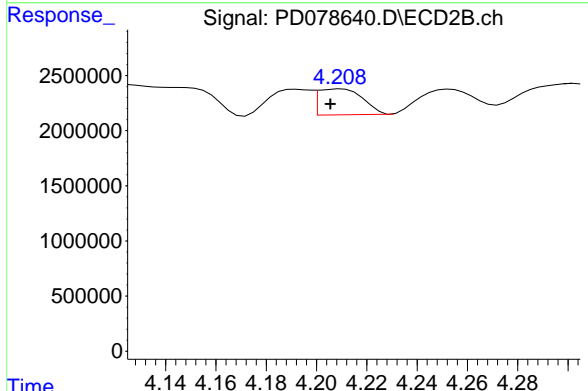
#4 Heptachlor

R.T.: 3.947 min
 Delta R.T.: 0.021 min
 Response: 4411689
 Conc: 1.50 ng/ml

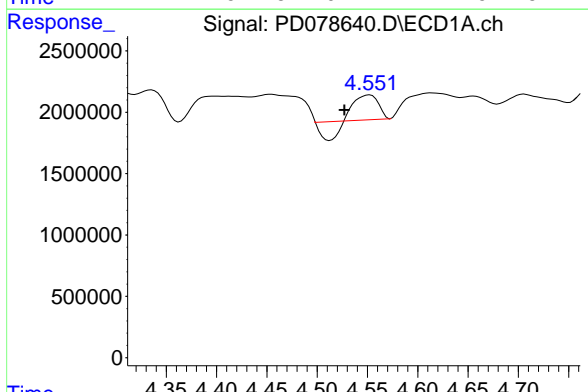


#5 Aldrin
 R.T.: 5.253 min
 Delta R.T.: -0.009 min
 Response: 2560096
 Conc: 0.53 ng/ml

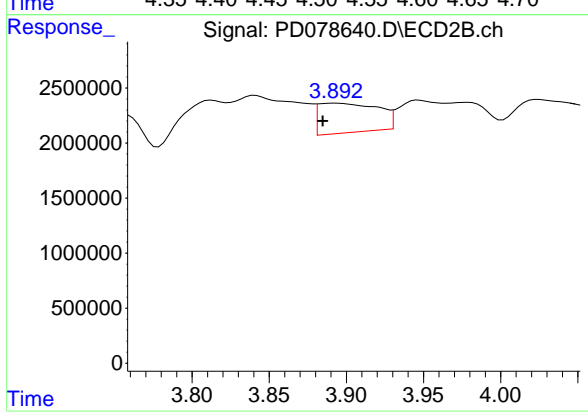
Instrument :
 ECD_D
 ClientSampleId :



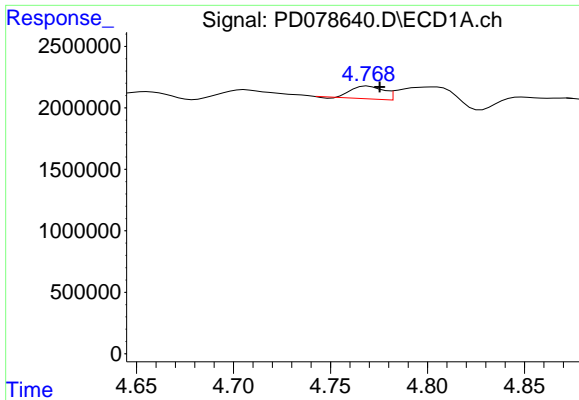
#5 Aldrin
 R.T.: 4.209 min
 Delta R.T.: 0.004 min
 Response: 2915773
 Conc: 0.98 ng/ml



#6 beta-BHC
 R.T.: 4.553 min
 Delta R.T.: 0.026 min
 Response: 2086212
 Conc: 1.12 ng/ml



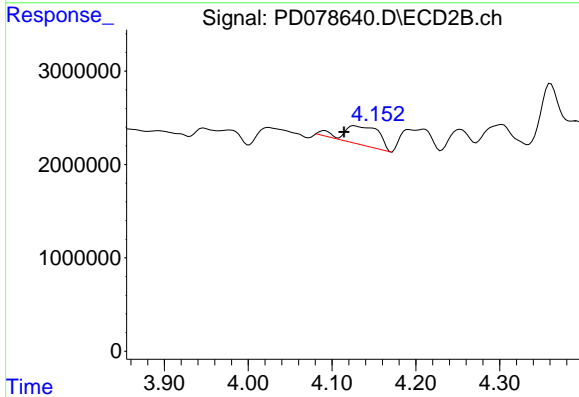
#6 beta-BHC
 R.T.: 3.893 min
 Delta R.T.: 0.009 min
 Response: 7181555
 Conc: 6.21 ng/ml



#7 delta-BHC

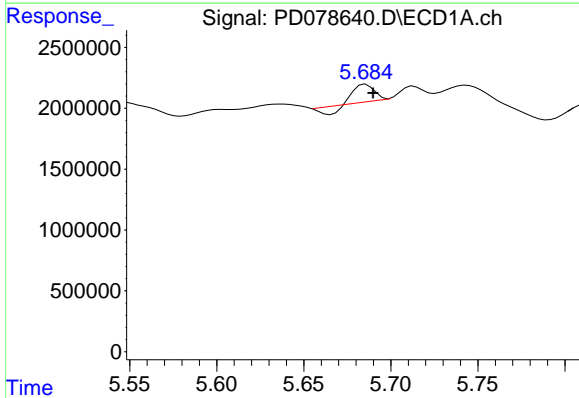
R.T.: 4.769 min
 Delta R.T.: -0.006 min
 Response: 1183326
 Conc: 0.26 ng/ml

Instrument :
 ECD_D
 ClientSampleId :



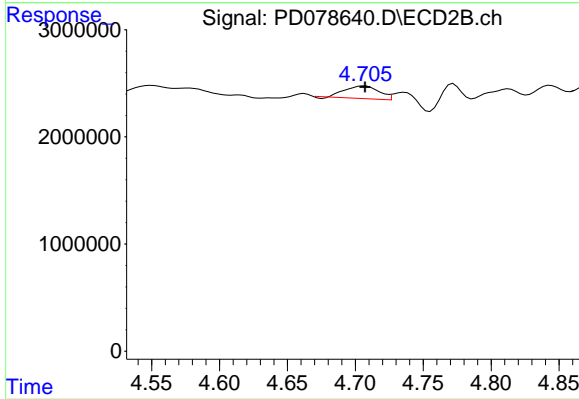
#7 delta-BHC

R.T.: 4.127 min
 Delta R.T.: 0.013 min
 Response: 5662545
 Conc: 1.98 ng/ml



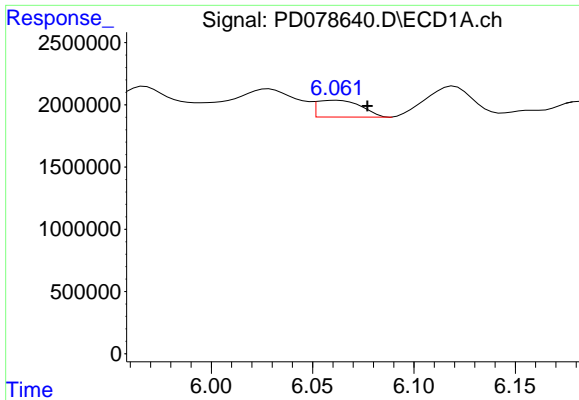
#8 Heptachlor epoxide

R.T.: 5.686 min
 Delta R.T.: -0.004 min
 Response: 751624
 Conc: 0.18 ng/ml



#8 Heptachlor epoxide

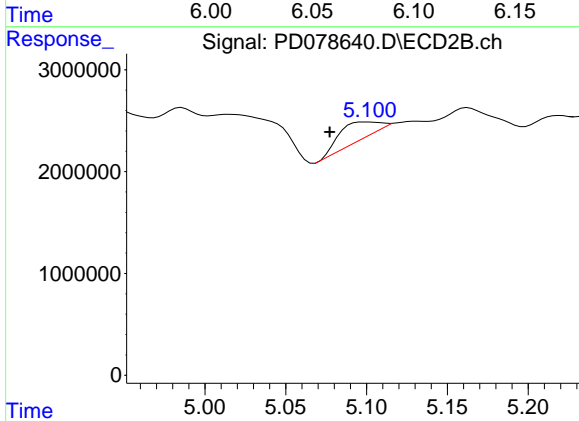
R.T.: 4.707 min
 Delta R.T.: 0.000 min
 Response: 2025846
 Conc: 0.75 ng/ml



#9 Endosulfan I

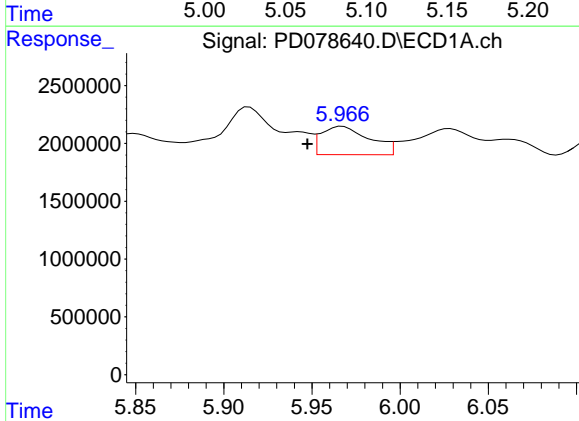
R.T.: 6.062 min
 Delta R.T.: -0.015 min
 Response: 2050821
 Conc: 0.52 ng/ml

Instrument :
 ECD_D
 ClientSampleId :



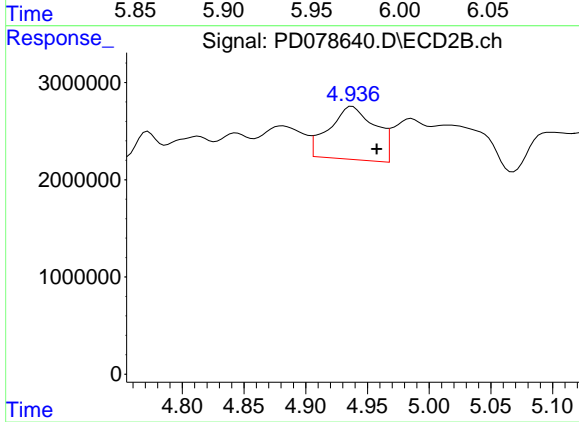
#9 Endosulfan I

R.T.: 5.100 min
 Delta R.T.: 0.023 min
 Response: 2768031
 Conc: 1.10 ng/ml



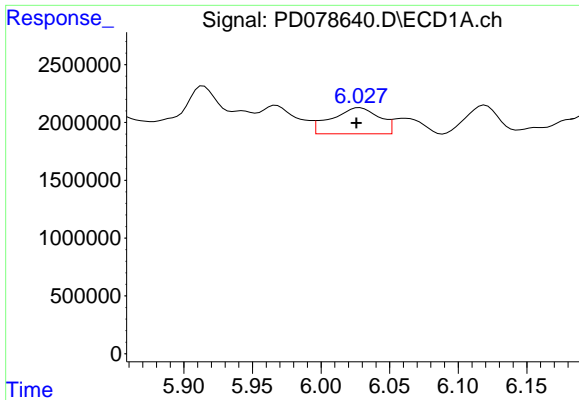
#10 gamma-Chlordane

R.T.: 5.967 min
 Delta R.T.: 0.020 min
 Response: 4661450
 Conc: 1.11 ng/ml



#10 gamma-Chlordane

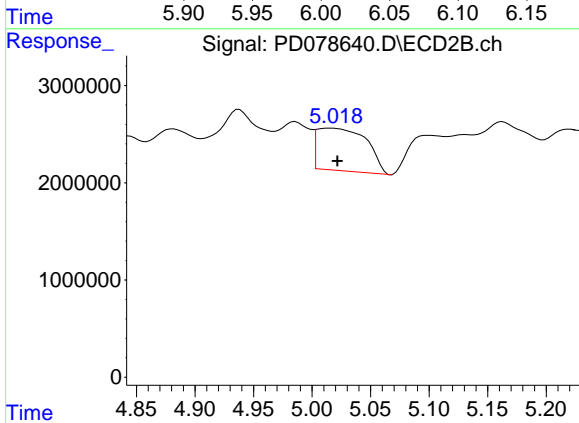
R.T.: 4.938 min
 Delta R.T.: -0.020 min
 Response: 14206341
 Conc: 5.29 ng/ml



#11 alpha-Chlordane

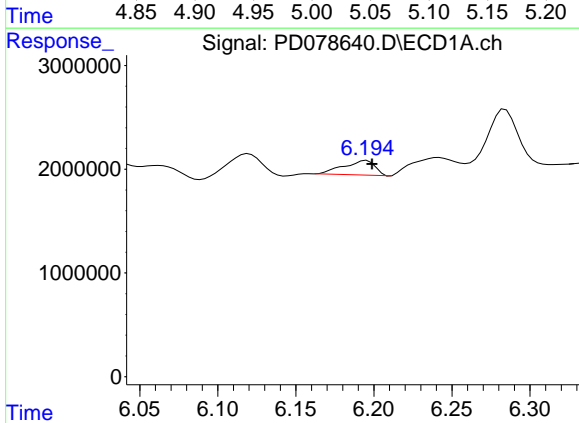
R.T.: 6.028 min
 Delta R.T.: 0.003 min
 Response: 5431277
 Conc: 1.29 ng/ml

Instrument :
 ECD_D
 ClientSampleId :



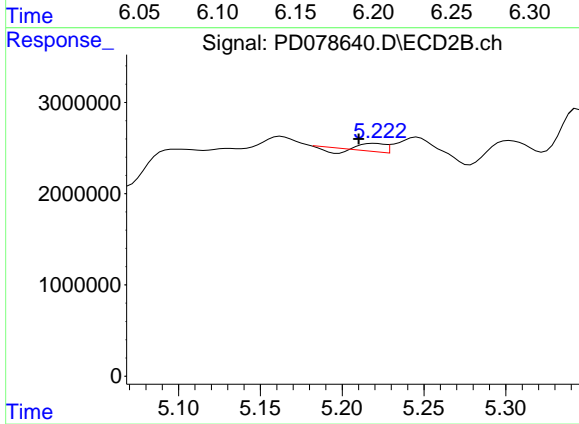
#11 alpha-Chlordane

R.T.: 5.016 min
 Delta R.T.: -0.006 min
 Response: 12913042
 Conc: 4.81 ng/ml



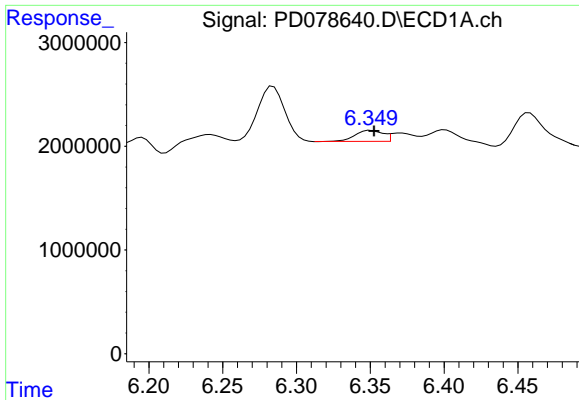
#12 4,4'-DDE

R.T.: 6.195 min
 Delta R.T.: -0.004 min
 Response: 1961489
 Conc: 0.49 ng/ml



#12 4,4'-DDE

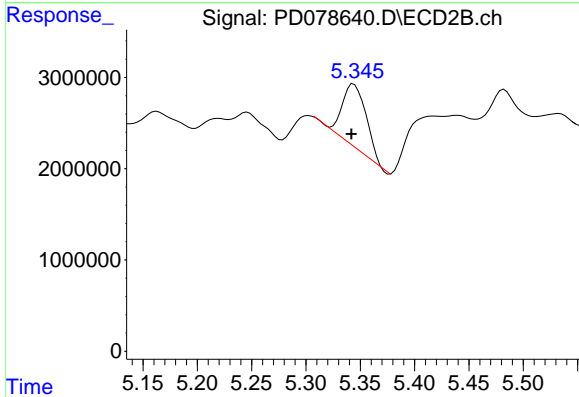
R.T.: 5.220 min
 Delta R.T.: 0.010 min
 Response: 505197
 Conc: 0.20 ng/ml



#13 Dieldrin

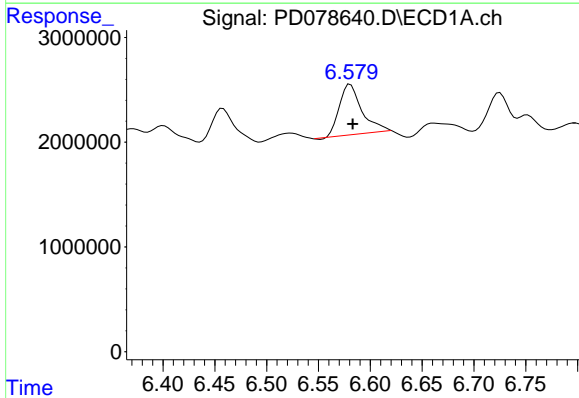
R.T.: 6.350 min
 Delta R.T.: -0.002 min
 Response: 1416219
 Conc: 0.34 ng/ml

Instrument :
 ECD_D
 ClientSampleId :



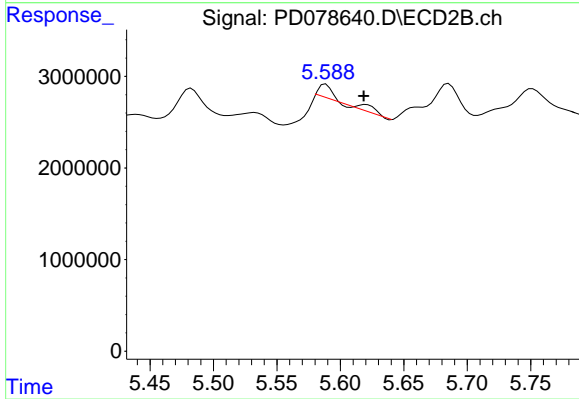
#13 Dieldrin

R.T.: 5.344 min
 Delta R.T.: 0.002 min
 Response: 10704443
 Conc: 3.83 ng/ml



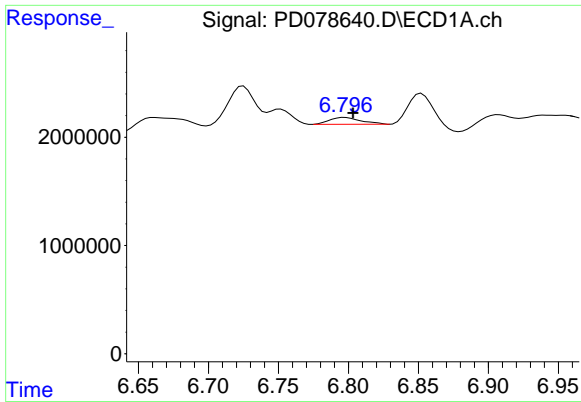
#14 Endrin

R.T.: 6.581 min
 Delta R.T.: -0.002 min
 Response: 7358848
 Conc: 2.19 ng/ml



#14 Endrin

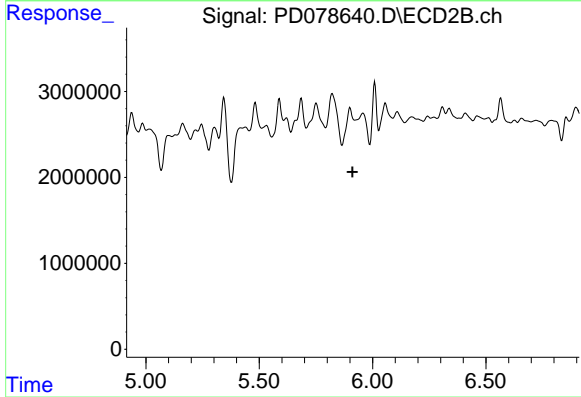
R.T.: 5.620 min
 Delta R.T.: 0.002 min
 Response: 1084710
 Conc: 0.44 ng/ml



#15 Endosulfan II

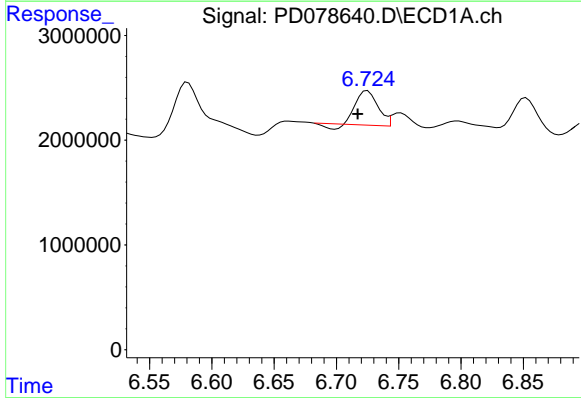
R.T.: 6.798 min
 Delta R.T.: -0.006 min
 Response: 993431
 Conc: 0.28 ng/ml

Instrument :
 ECD_D
 ClientSampleId :



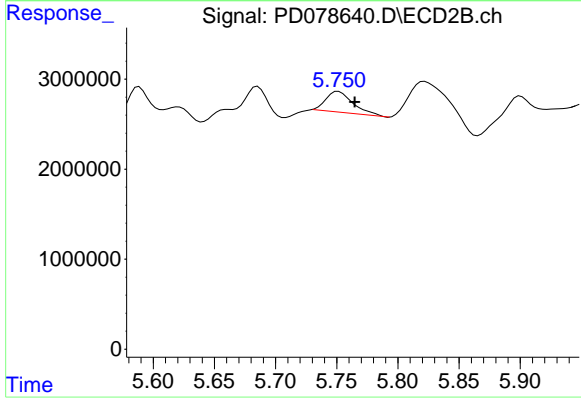
#15 Endosulfan II

R.T.: 5.900 min
 Delta R.T.: -0.012 min
 Response: -3715812
 Conc: N.D.



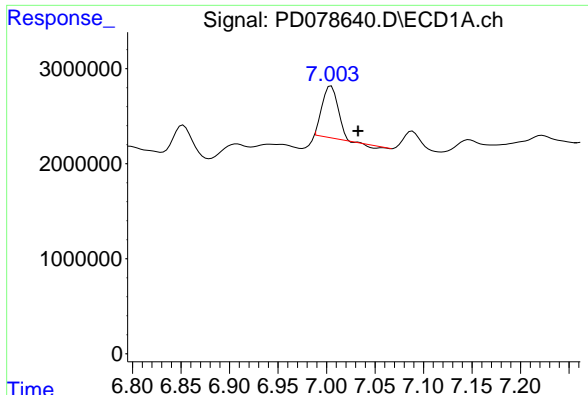
#16 4,4'-DDD

R.T.: 6.725 min
 Delta R.T.: 0.008 min
 Response: 3727883
 Conc: 1.25 ng/ml



#16 4,4'-DDD

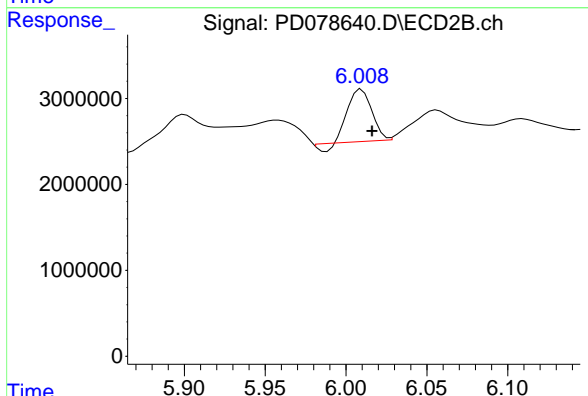
R.T.: 5.751 min
 Delta R.T.: -0.013 min
 Response: 3589333
 Conc: 1.81 ng/ml



#17 4,4'-DDT

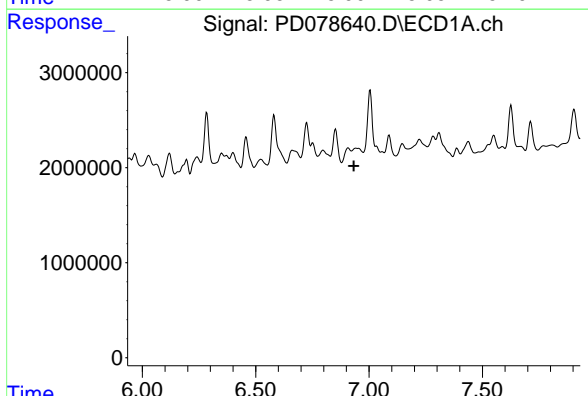
R.T.: 7.005 min
 Delta R.T.: -0.028 min
 Response: 5993031
 Conc: 2.03 ng/ml

Instrument :
 ECD_D
 ClientSampleId :



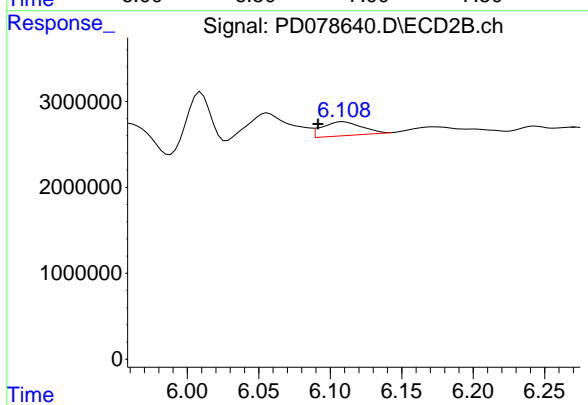
#17 4,4'-DDT

R.T.: 6.010 min
 Delta R.T.: -0.007 min
 Response: 5937649
 Conc: 2.92 ng/ml



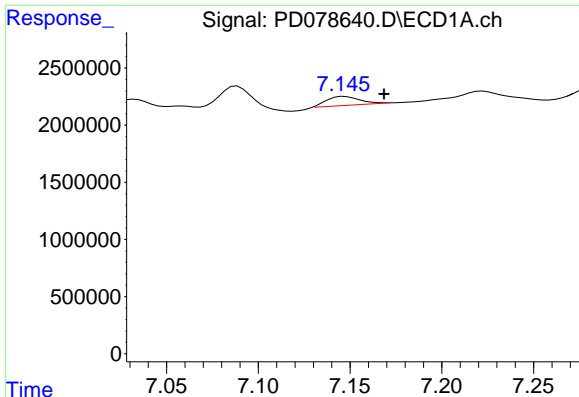
#18 Endrin aldehyde

R.T.: 6.942 min
 Delta R.T.: 0.009 min
 Response: -82132
 Conc: N.D.



#18 Endrin aldehyde

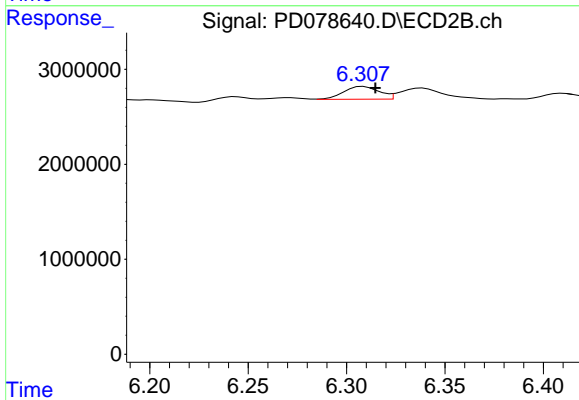
R.T.: 6.109 min
 Delta R.T.: 0.018 min
 Response: 3108900
 Conc: 1.68 ng/ml



#19 Endosulfan Sulfate

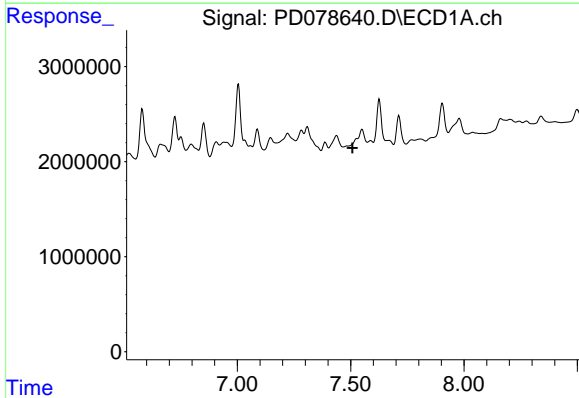
R.T.: 7.147 min
 Delta R.T.: -0.021 min
 Response: 983236
 Conc: 0.31 ng/ml

Instrument :
 ECD_D
 ClientSampleId :



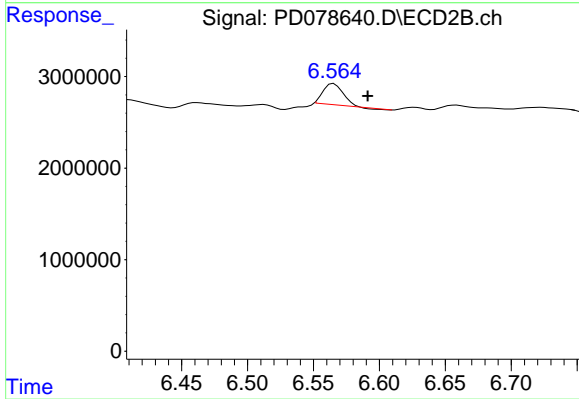
#19 Endosulfan Sulfate

R.T.: 6.309 min
 Delta R.T.: -0.006 min
 Response: 1695414
 Conc: 0.76 ng/ml



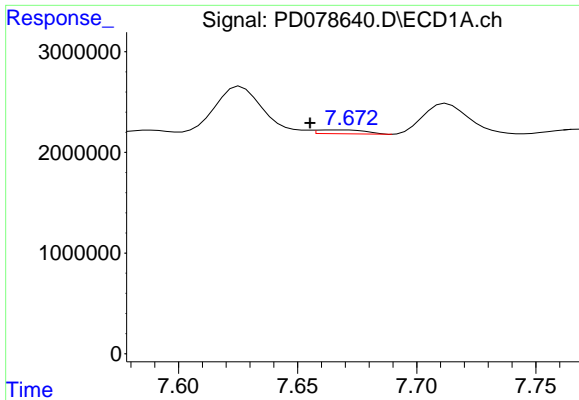
#20 Methoxychlor

R.T.: 0.000 min
 Exp R.T. : 7.508 min
 Response: 0
 Conc: N.D.



#20 Methoxychlor

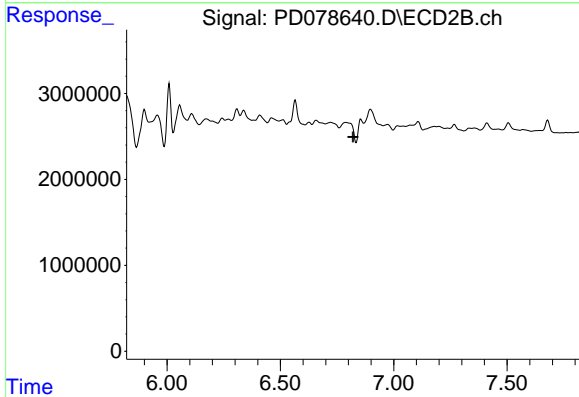
R.T.: 6.565 min
 Delta R.T.: -0.026 min
 Response: 2385168
 Conc: 2.19 ng/ml



#21 Endrin ketone

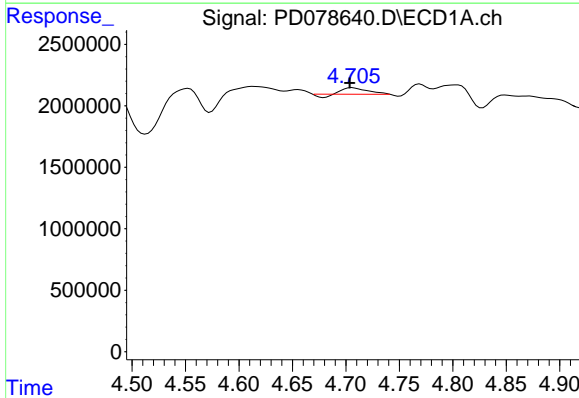
R.T.: 7.669 min
 Delta R.T.: 0.014 min
 Response: 544798
 Conc: 0.15 ng/ml

Instrument :
 ECD_D
 ClientSampleId :



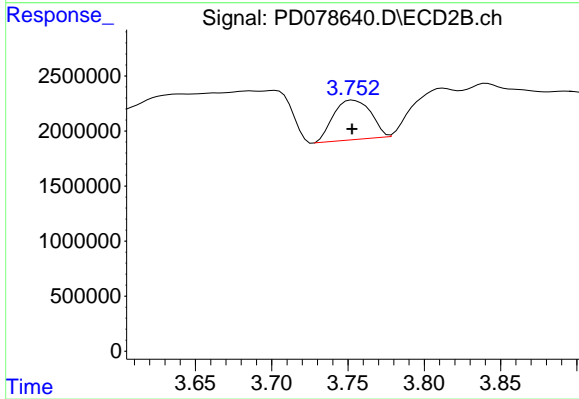
#21 Endrin ketone

R.T.: 0.000 min
 Exp R.T. : 6.820 min
 Response: 0
 Conc: N.D.



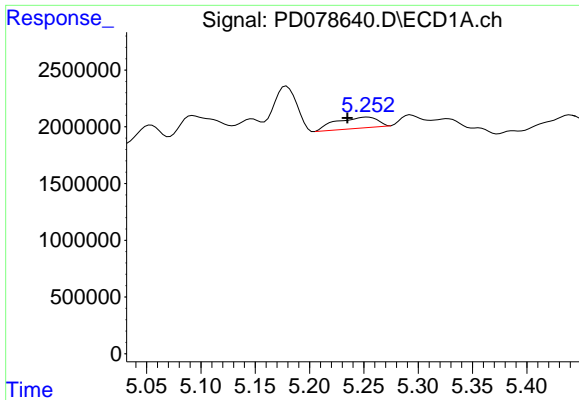
#23 Chlordane-1

R.T.: 4.706 min
 Delta R.T.: 0.002 min
 Response: 701728
 Conc: 5.33 ng/ml



#23 Chlordane-1

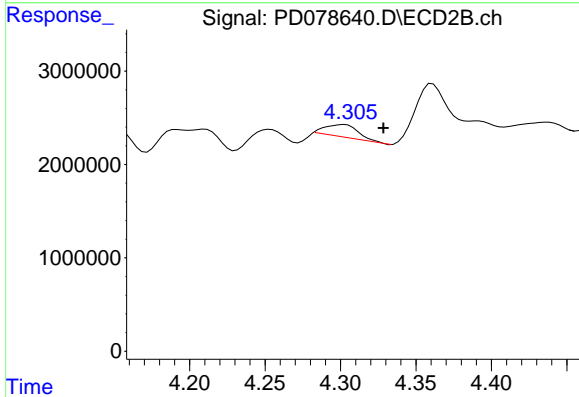
R.T.: 3.753 min
 Delta R.T.: 0.000 min
 Response: 6136792
 Conc: 84.37 ng/ml



#24 Chlordane-2

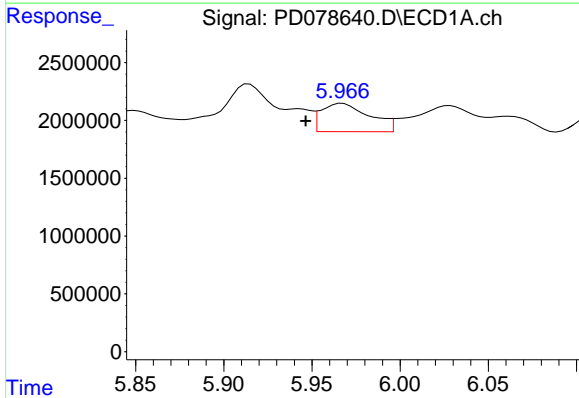
R.T.: 5.253 min
 Delta R.T.: 0.019 min
 Response: 2560096
 Conc: 17.95 ng/ml

Instrument :
 ECD_D
 ClientSampleId :



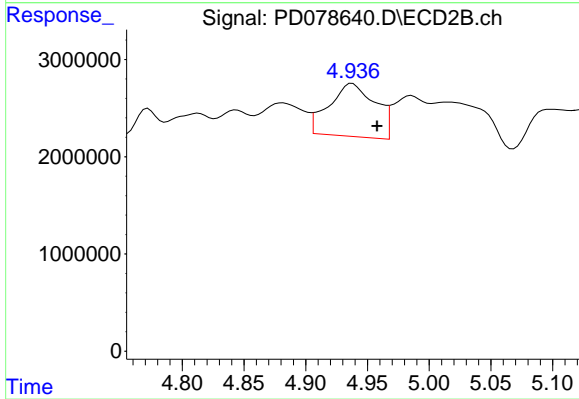
#24 Chlordane-2

R.T.: 4.302 min
 Delta R.T.: -0.026 min
 Response: 2049041
 Conc: 26.46 ng/ml



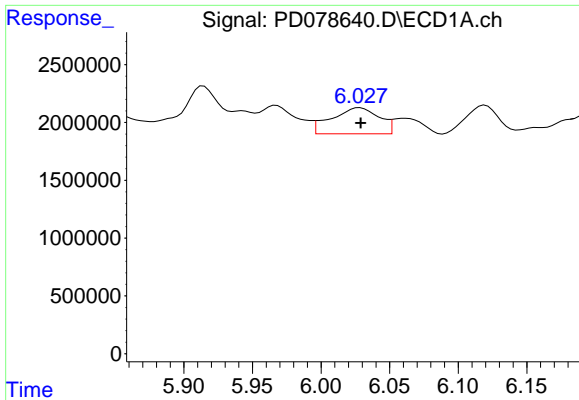
#25 Chlordane-3

R.T.: 5.967 min
 Delta R.T.: 0.021 min
 Response: 4661450
 Conc: 7.97 ng/ml



#25 Chlordane-3

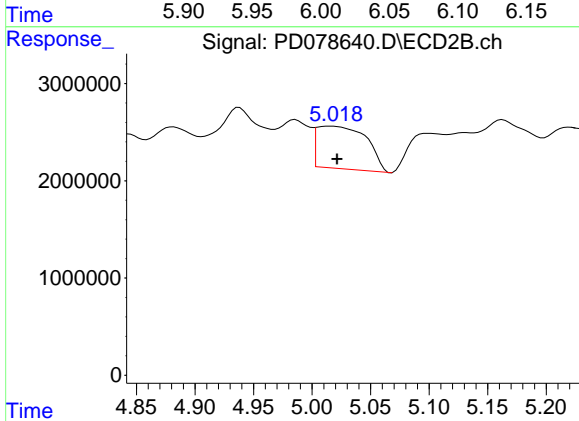
R.T.: 4.938 min
 Delta R.T.: -0.020 min
 Response: 14206341
 Conc: 55.14 ng/ml



#26 Chlordane-4

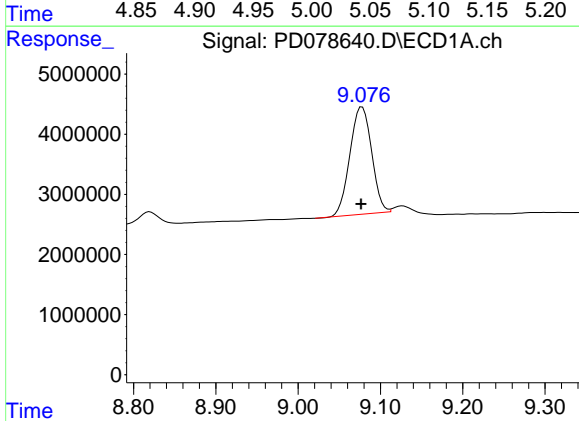
R.T.: 6.028 min
 Delta R.T.: 0.000 min
 Response: 5431277
 Conc: 7.68 ng/ml

Instrument :
 ECD_D
 ClientSampleId :



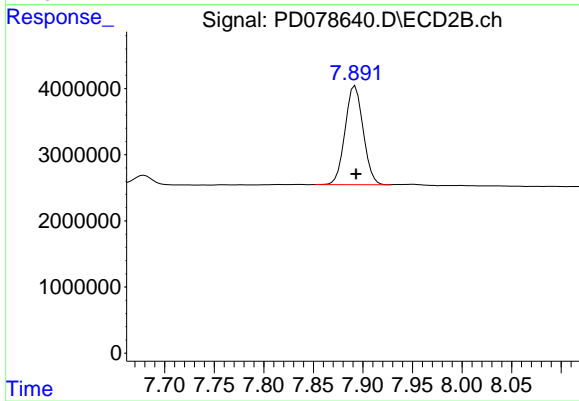
#26 Chlordane-4

R.T.: 5.016 min
 Delta R.T.: -0.005 min
 Response: 12913042
 Conc: 51.42 ng/ml



#28 Decachlorobiphenyl

R.T.: 9.078 min
 Delta R.T.: 0.001 min
 Response: 32756380
 Conc: 8.83 ng/ml



#28 Decachlorobiphenyl

R.T.: 7.892 min
 Delta R.T.: -0.001 min
 Response: 18983380
 Conc: 8.37 ng/ml