

Data Path : Z:\pestpcbsrv\HPCHEM1\ECD_D\Data\PD100423\
 Data File : PD078593.D
 Signal(s) : Signal #1: ECD1A.ch Signal #2: ECD2B.ch
 Acq On : 03 Oct 2023 11:45
 Operator : AR\AJ
 Sample : 04627-15
 Misc :
 ALS Vial : 9 Sample Multiplier: 1

Instrument :
 ECD_D
ClientSampleId :
 280-300FB-BACKFILL-08

Integration File signal 1: autoint1.e
 Integration File signal 2: autoint2.e
 Quant Time: Oct 03 22:25:51 2023
 Quant Method : Z:\pestpcbsrv\HPCHEM1\ECD_D\Method\PD100323.M
 Quant Title : GC Extractables
 QLast Update : Tue Oct 03 01:10:04 2023
 Response via : Initial Calibration
 Integrator: ChemStation

Volume Inj. : 1 µl
 Signal #1 Phase : ZB-MR1 Signal #2 Phase: ZB-MR2
 Signal #1 Info : 30M x 0.32mm x0.5 Signal #2 Info : 30M x 0.32mm x 0.25µm

Compound	RT#1	RT#2	Resp#1	Resp#2	ng/ml	ng/ml

System Monitoring Compounds						
1) SA Tetrachlo...	3.540	2.757	48595027	34243548	16.834	16.767
28) SA Decachlor...	9.081	7.895	56706438	32876520	15.291	14.489

Target Compounds

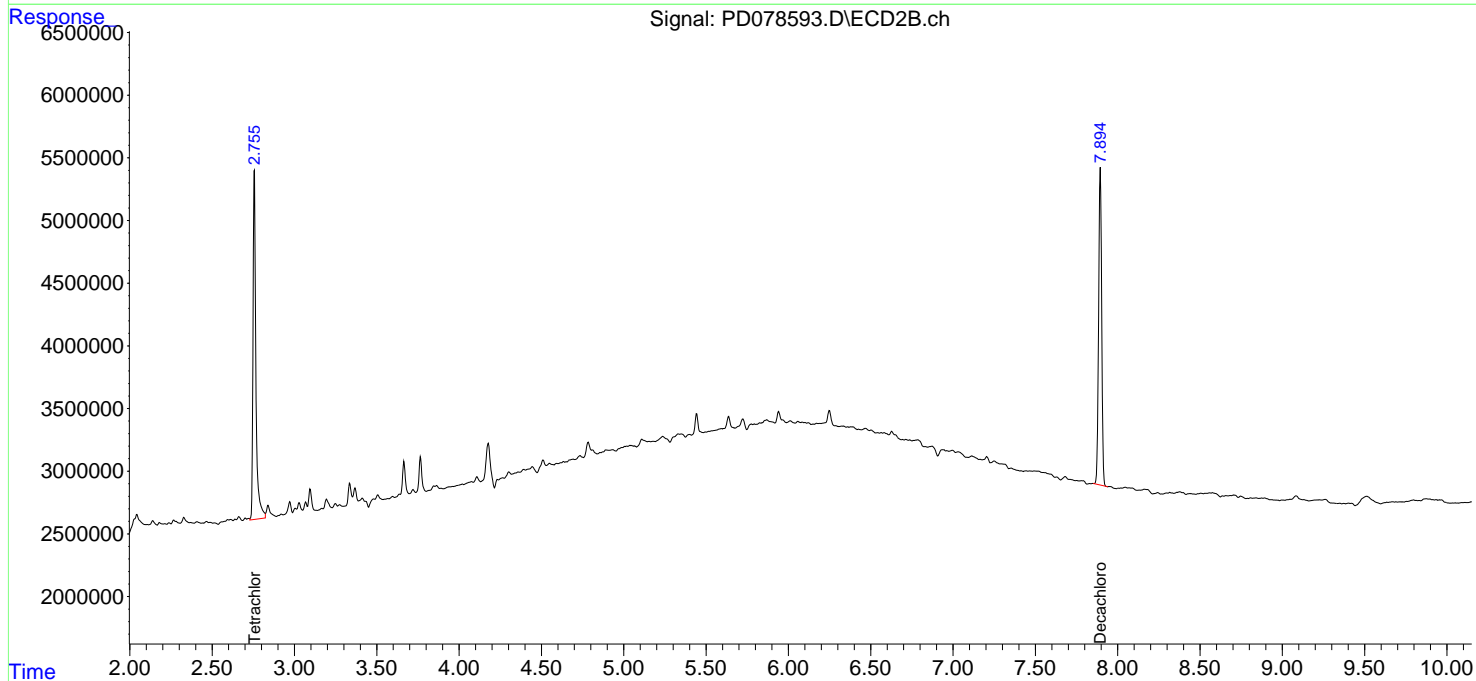
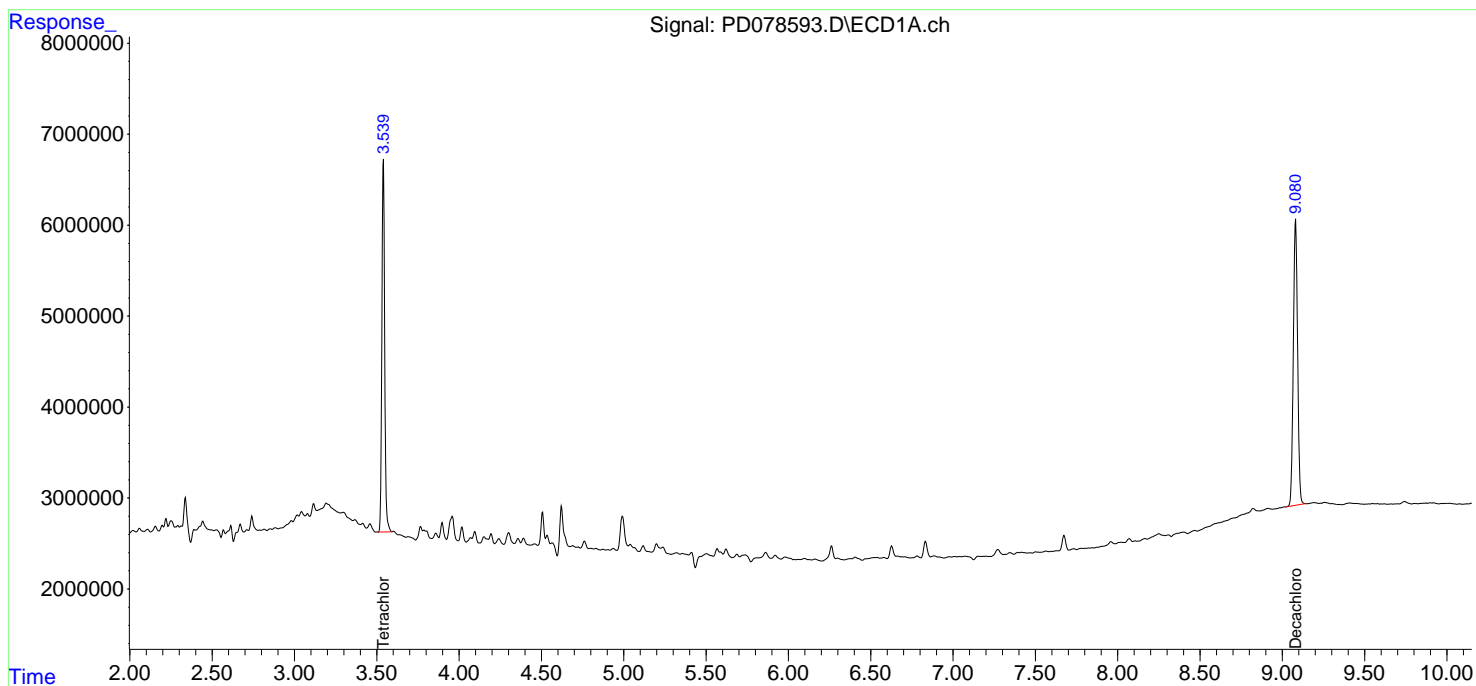
 (f)=RT Delta > 1/2 Window (#)=Amounts differ by > 25% (m)=manual int.

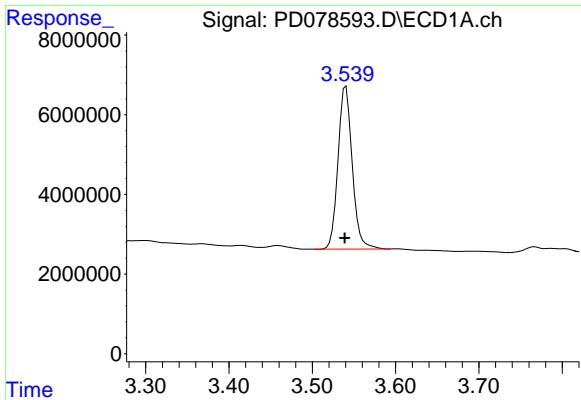
Data Path : Z:\pestpcbsrv\HPCHEM1\ECD_D\Data\PD100423\
 Data File : PD078593.D
 Signal(s) : Signal #1: ECD1A.ch Signal #2: ECD2B.ch
 Acq On : 03 Oct 2023 11:45
 Operator : AR\AJ
 Sample : 04627-15
 Misc :
 ALS Vial : 9 Sample Multiplier: 1

Instrument :
 ECD_D
ClientSampleId :
 280-300FB-BACKFILL-08

Integration File signal 1: autoint1.e
 Integration File signal 2: autoint2.e
 Quant Time: Oct 03 22:25:51 2023
 Quant Method : Z:\pestpcbsrv\HPCHEM1\ECD_D\Method\PD100323.M
 Quant Title : GC Extractables
 QLast Update : Tue Oct 03 01:10:04 2023
 Response via : Initial Calibration
 Integrator: ChemStation

Volume Inj. : 1 µl
 Signal #1 Phase : ZB-MR1 Signal #2 Phase: ZB-MR2
 Signal #1 Info : 30M x 0.32mm x 0.5 Signal #2 Info : 30M x 0.32mm x 0.25µm

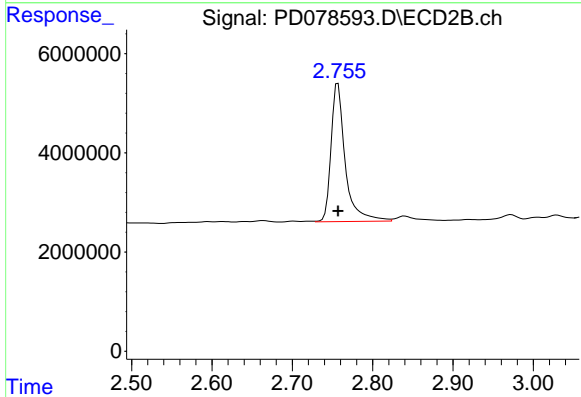




#1 Tetrachloro-m-xylene

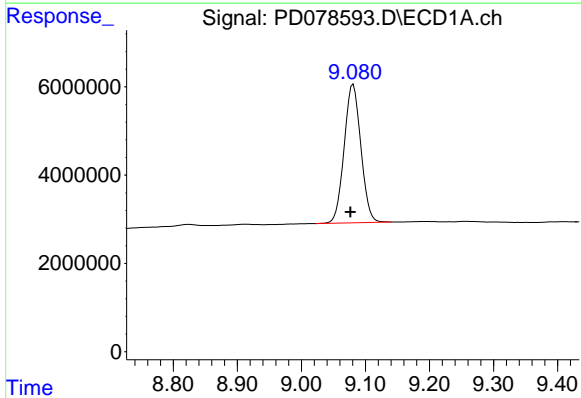
R.T.: 3.540 min
 Delta R.T.: 0.001 min
 Response: 48595027
 Conc: 16.83 ng/ml

Instrument :
 ECD_D
 ClientSampleId :
 280-300FB-BACKFILL-08



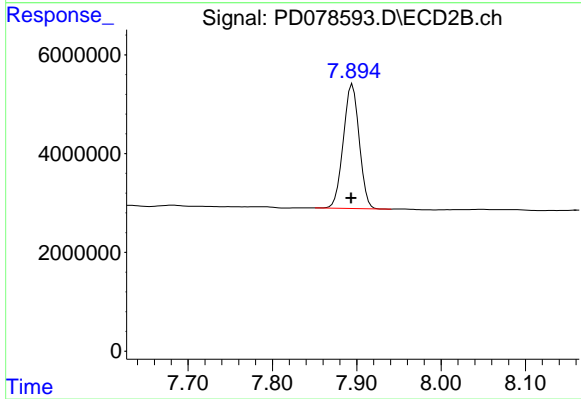
#1 Tetrachloro-m-xylene

R.T.: 2.757 min
 Delta R.T.: 0.000 min
 Response: 34243548
 Conc: 16.77 ng/ml



#28 Decachlorobiphenyl

R.T.: 9.081 min
 Delta R.T.: 0.004 min
 Response: 56706438
 Conc: 15.29 ng/ml



#28 Decachlorobiphenyl

R.T.: 7.895 min
 Delta R.T.: 0.002 min
 Response: 32876520
 Conc: 14.49 ng/ml