

Data Path : Z:\pestpcbsrv\HPCHEM1\ECD_D\Data\PD100423\
 Data File : PD078603.D
 Signal(s) : Signal #1: ECD1A.ch Signal #2: ECD2B.ch
 Acq On : 03 Oct 2023 14:10
 Operator : AR\AJ
 Sample : 04668-09
 Misc :
 ALS Vial : 16 Sample Multiplier: 1

Instrument :
 ECD_D
ClientSampleId :
 RBR251354

Manual Integrations
APPROVED
 Reviewed By :Abdul Mirza 10/04/2023
 Supervised By :Ankita Jodhani 10/04/2023

Integration File signal 1: autoint1.e
 Integration File signal 2: autoint2.e
 Quant Time: Oct 03 14:35:12 2023
 Quant Method : Z:\pestpcbsrv\HPCHEM1\ECD_D\Method\PD100323.M
 Quant Title : GC Extractables
 QLast Update : Tue Oct 03 01:10:04 2023
 Response via : Initial Calibration
 Integrator: ChemStation

Volume Inj. : 1 µl
 Signal #1 Phase : ZB-MR1 Signal #2 Phase: ZB-MR2
 Signal #1 Info : 30M x 0.32mm x0.5 Signal #2 Info : 30M x 0.32mm x 0.25µm

Compound	RT#1	RT#2	Resp#1	Resp#2	ng/ml	ng/ml

System Monitoring Compounds						
1) SA Tetrachlo...	3.540	2.759	18473824	15548453	6.400m	7.613
28) SA Decachlor...	9.080	7.894	39933570	23427373	10.768	10.324

Target Compounds

(f)=RT Delta > 1/2 Window (#)=Amounts differ by > 25% (m)=manual int.

Data Path : Z:\pestpcbsrv\HPCHEM1\ECD_D\Data\PD100423\
 Data File : PD078603.D
 Signal(s) : Signal #1: ECD1A.ch Signal #2: ECD2B.ch
 Acq On : 03 Oct 2023 14:10
 Operator : AR\AJ
 Sample : 04668-09
 Misc :
 ALS Vial : 16 Sample Multiplier: 1

Instrument :

ECD_D

ClientSampleId :

RBR251354

Manual Integrations

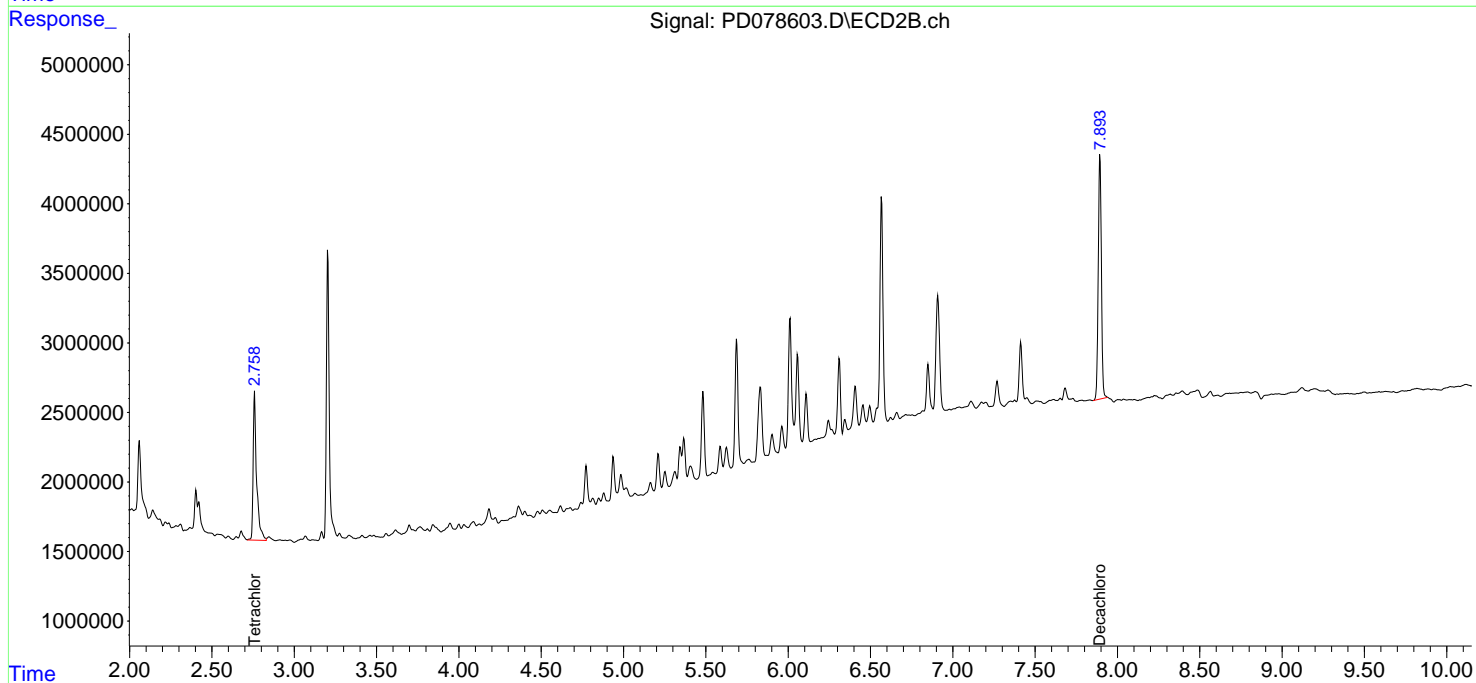
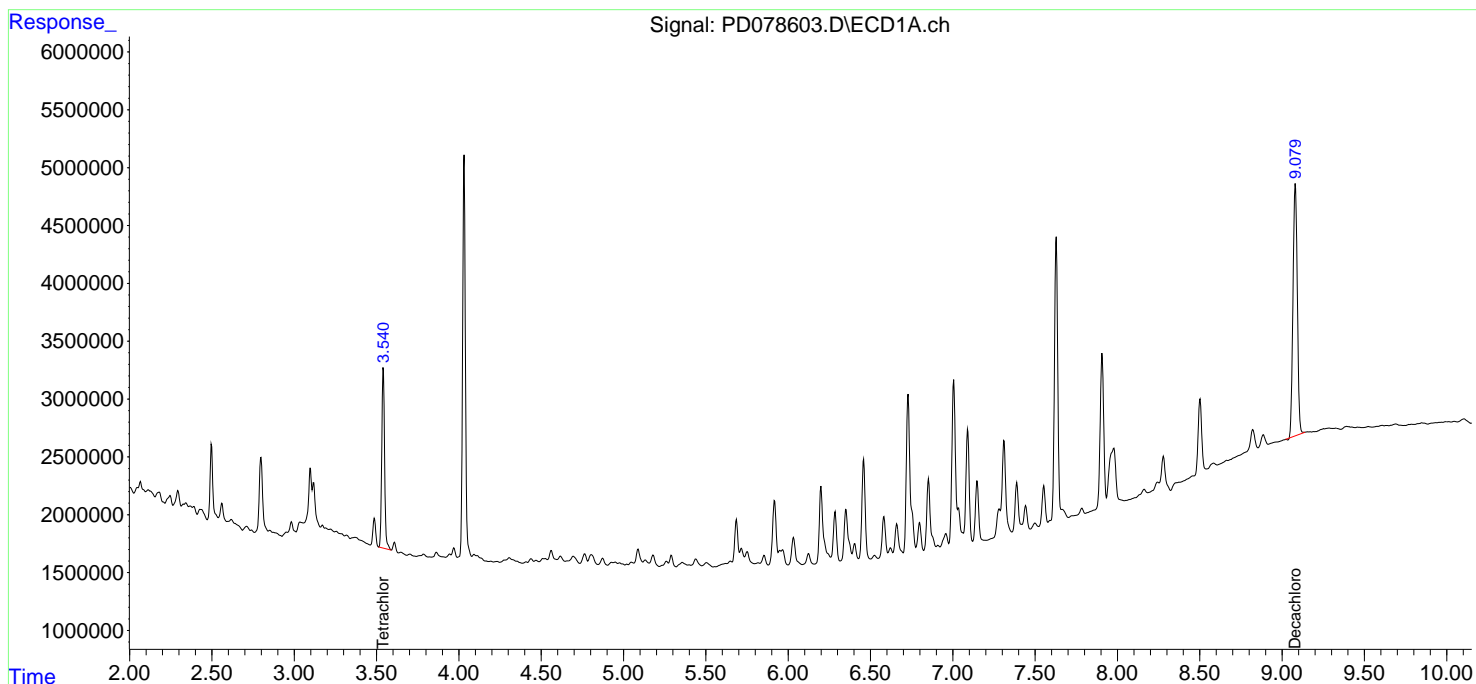
APPROVED

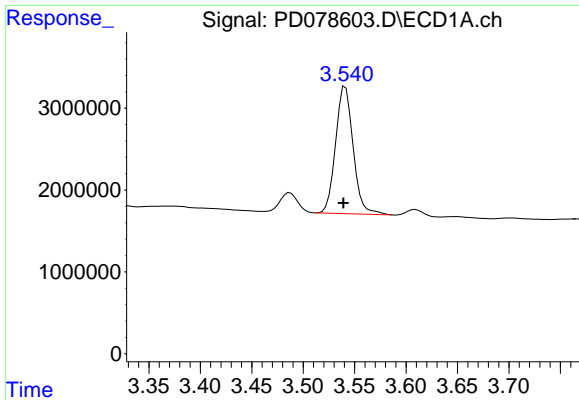
Reviewed By :Abdul Mirza 10/04/2023

Supervised By :Ankita Jodhani 10/04/2023

Integration File signal 1: autoint1.e
 Integration File signal 2: autoint2.e
 Quant Time: Oct 03 14:35:12 2023
 Quant Method : Z:\pestpcbsrv\HPCHEM1\ECD_D\Method\PD100323.M
 Quant Title : GC Extractables
 QLast Update : Tue Oct 03 01:10:04 2023
 Response via : Initial Calibration
 Integrator: ChemStation

Volume Inj. : 1 µl
 Signal #1 Phase : ZB-MR1 Signal #2 Phase: ZB-MR2
 Signal #1 Info : 30M x 0.32mm x0.5 Signal #2 Info : 30M x 0.32mm x 0.25µm





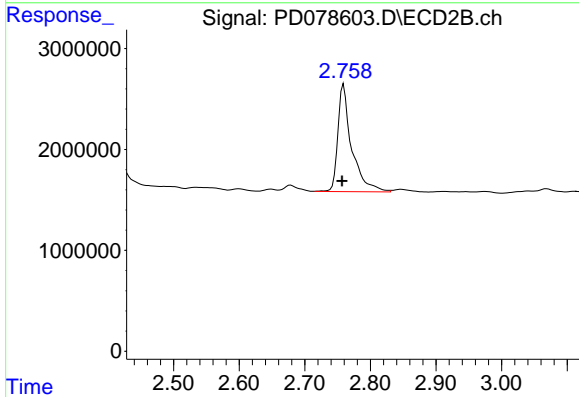
#1 Tetrachloro-m-xylene

R.T.: 3.540 min
 Delta R.T.: 0.000 min
 Response: 18473824
 Conc: 6.40 ng/ml

Instrument :
 ECD_D
 ClientSampleId :
 RBR251354

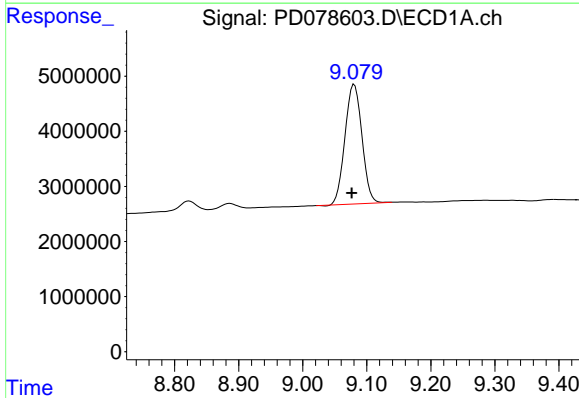
Manual Integrations
 APPROVED

Reviewed By :Abdul Mirza 10/04/2023
 Supervised By :Ankita Jodhani 10/04/2023



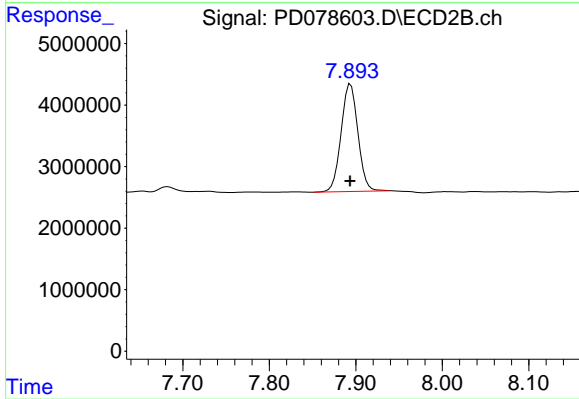
#1 Tetrachloro-m-xylene

R.T.: 2.759 min
 Delta R.T.: 0.002 min
 Response: 15548453
 Conc: 7.61 ng/ml



#28 Decachlorobiphenyl

R.T.: 9.080 min
 Delta R.T.: 0.004 min
 Response: 39933570
 Conc: 10.77 ng/ml



#28 Decachlorobiphenyl

R.T.: 7.894 min
 Delta R.T.: 0.000 min
 Response: 23427373
 Conc: 10.32 ng/ml