

Data Path : Z:\pestpcbsrv\HPCHEM1\ECD\_D\Data\PD100424\  
 Data File : PD085900.D  
 Signal(s) : Signal #1: ECD1A.ch Signal #2: ECD2B.ch  
 Acq On : 03 Oct 2024 08:17  
 Operator : AR\AJ  
 Sample : PIBLK173  
 Misc :  
 ALS Vial : 2 Sample Multiplier: 1

Instrument :  
 ECD\_D  
 ClientSampleId :  
 PIBLK335

Integration File signal 1: autoint1.e  
 Integration File signal 2: autoint2.e  
 Quant Time: Oct 04 02:21:38 2024  
 Quant Method : Z:\pestpcbsrv\HPCHEM1\ECD\_D\Method\PD100124CLP.M  
 Quant Title : GC Extractables  
 QLast Update : Tue Oct 01 08:04:20 2024  
 Response via : Initial Calibration  
 Integrator: ChemStation

Volume Inj. : 1 µl  
 Signal #1 Phase : ZB-MR1 Signal #2 Phase: ZB-MR2  
 Signal #1 Info : 30M x 0.32mm x0.5 Signal #2 Info : 30M x 0.32mm x 0.25µm

Compound	RT#1	RT#2	Resp#1	Resp#2	ng/ml	ng/ml
-----						
System Monitoring Compounds						
1) SA Tetrachlo...	3.438	2.874	25372581	94825391	22.178	22.362
27) SA Decachlor...	8.885	8.057	45656982	94137206	25.105	25.610

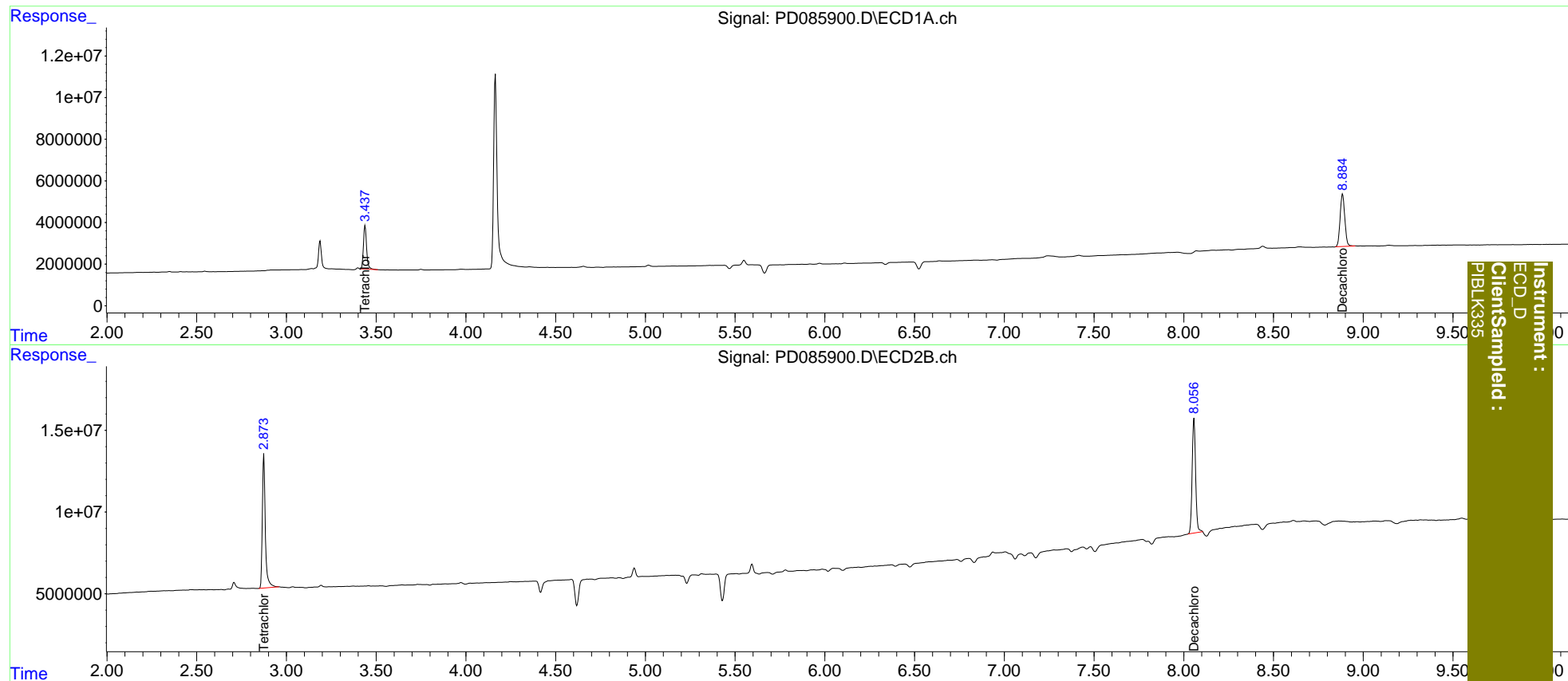
Target Compounds

-----  
 (f)=RT Delta > 1/2 Window (#)=Amounts differ by > 25% (m)=manual int.

Data Path : Z:\pestpcbsrv\HPCHEM1\ECD\_D\Data\PD100424\  
 Data File : PD085900.D  
 Signal(s) : Signal #1: ECD1A.ch Signal #2: ECD2B.ch  
 Acq On : 03 Oct 2024 08:17  
 Operator : AR\AJ  
 Sample : PIBLK173  
 Misc :  
 ALS Vial : 2 Sample Multiplier: 1

Integration File signal 1: autoint1.e  
 Integration File signal 2: autoint2.e  
 Quant Time: Oct 04 02:21:38 2024  
 Quant Method : Z:\pestpcbsrv\HPCHEM1\ECD\_D\Method\PD100124CLP.M  
 Quant Title : GC Extractables  
 QLast Update : Tue Oct 01 08:04:20 2024  
 Response via : Initial Calibration  
 Integrator: ChemStation

Volume Inj. : 1 µl  
 Signal #1 Phase : ZB-MR1 Signal #2 Phase: ZB-MR2  
 Signal #1 Info : 30M x 0.32mm x0.5 Signal #2 Info : 30M x 0.32mm x 0.25µm



Instrument :  
 ECD\_D  
 ClientSampleId :  
 PIBLK335