

Data Path : Z:\pestpcbsrv\HPCHEM1\ECD_D\Data\PD100424\
 Data File : PD085903.D
 Signal(s) : Signal #1: ECD1A.ch Signal #2: ECD2B.ch
 Acq On : 03 Oct 2024 10:19
 Operator : AR\AJ
 Sample : P4228-01
 Misc :
 ALS Vial : 5 Sample Multiplier: 1

Instrument :
 ECD_D
 ClientSampleId :
 E0CP6

Integration File signal 1: autoint1.e
 Integration File signal 2: autoint2.e
 Quant Time: Oct 04 02:22:27 2024
 Quant Method : Z:\pestpcbsrv\HPCHEM1\ECD_D\Method\PD100124CLP.M
 Quant Title : GC Extractables
 QLast Update : Tue Oct 01 08:04:20 2024
 Response via : Initial Calibration
 Integrator: ChemStation

Volume Inj. : 1 µl
 Signal #1 Phase : ZB-MR1 Signal #2 Phase: ZB-MR2
 Signal #1 Info : 30M x 0.32mm x0.5 Signal #2 Info : 30M x 0.32mm x 0.25µm

Compound	RT#1	RT#2	Resp#1	Resp#2	ng/ml	ng/ml

System Monitoring Compounds						
1) SA Tetrachlo...	3.438	2.874	22546248	81644474	19.707	19.253
27) SA Decachlor...	8.885	8.057	33728038	70363431	18.546	19.142

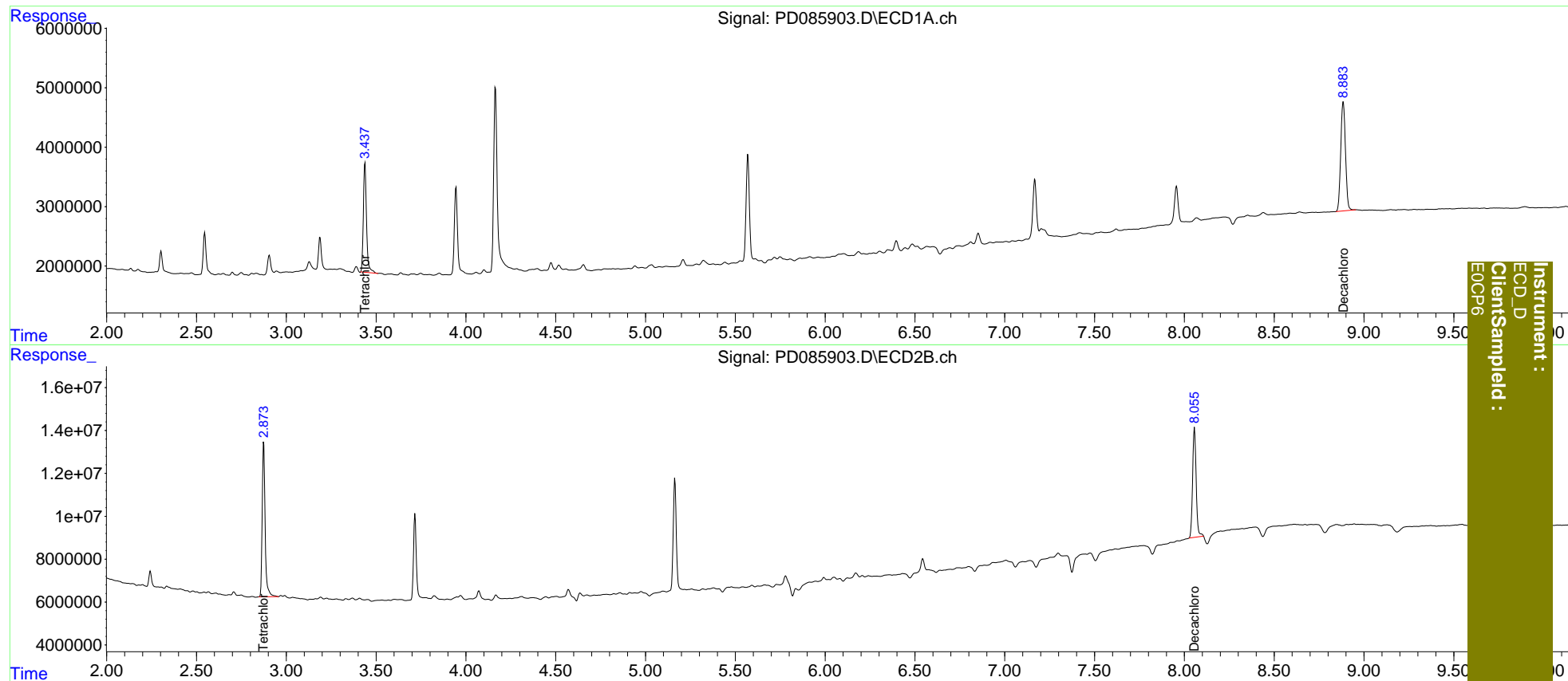
Target Compounds

 (f)=RT Delta > 1/2 Window (#)=Amounts differ by > 25% (m)=manual int.

Data Path : Z:\pestpcbsrv\HPCHEM1\ECD_D\Data\PD100424\
 Data File : PD085903.D
 Signal(s) : Signal #1: ECD1A.ch Signal #2: ECD2B.ch
 Acq On : 03 Oct 2024 10:19
 Operator : AR\AJ
 Sample : P4228-01
 Misc :
 ALS Vial : 5 Sample Multiplier: 1

Integration File signal 1: autoint1.e
 Integration File signal 2: autoint2.e
 Quant Time: Oct 04 02:22:27 2024
 Quant Method : Z:\pestpcbsrv\HPCHEM1\ECD_D\Method\PD100124CLP.M
 Quant Title : GC Extractables
 QLast Update : Tue Oct 01 08:04:20 2024
 Response via : Initial Calibration
 Integrator: ChemStation

Volume Inj. : 1 µl
 Signal #1 Phase : ZB-MR1 Signal #2 Phase: ZB-MR2
 Signal #1 Info : 30M x 0.32mm x0.5 Signal #2 Info : 30M x 0.32mm x 0.25µm



Instrument :
 ECD_D
 ClientSampleId :
 E0CP6