

Data Path : Z:\pestpcbsrv\HPCHEM1\ECD_D\Data\PD100424\
 Data File : PD085911.D
 Signal(s) : Signal #1: ECD1A.ch Signal #2: ECD2B.ch
 Acq On : 03 Oct 2024 12:22
 Operator : AR\AJ
 Sample : P4022-08DL 2X
 Misc :
 ALS Vial : 13 Sample Multiplier: 1

Instrument :
 ECD_D
 ClientSampleId :
 DDCA6DL

Manual Integrations
 APPROVED

Reviewed By :Abdul Mirza 10/04/2024
 Supervised By :Ankita Jodhani 10/04/2024

Integration File signal 1: autoint1.e
 Integration File signal 2: autoint2.e
 Quant Time: Oct 04 02:24:40 2024
 Quant Method : Z:\pestpcbsrv\HPCHEM1\ECD_D\Method\PD100124CLP.M
 Quant Title : GC Extractables
 QLast Update : Tue Oct 01 08:04:20 2024
 Response via : Initial Calibration
 Integrator: ChemStation

Volume Inj. : 1 µl
 Signal #1 Phase : ZB-MR1 Signal #2 Phase: ZB-MR2
 Signal #1 Info : 30M x 0.32mm x0.5 Signal #2 Info : 30M x 0.32mm x 0.25µm

Compound	RT#1	RT#2	Resp#1	Resp#2	ng/ml	ng/ml

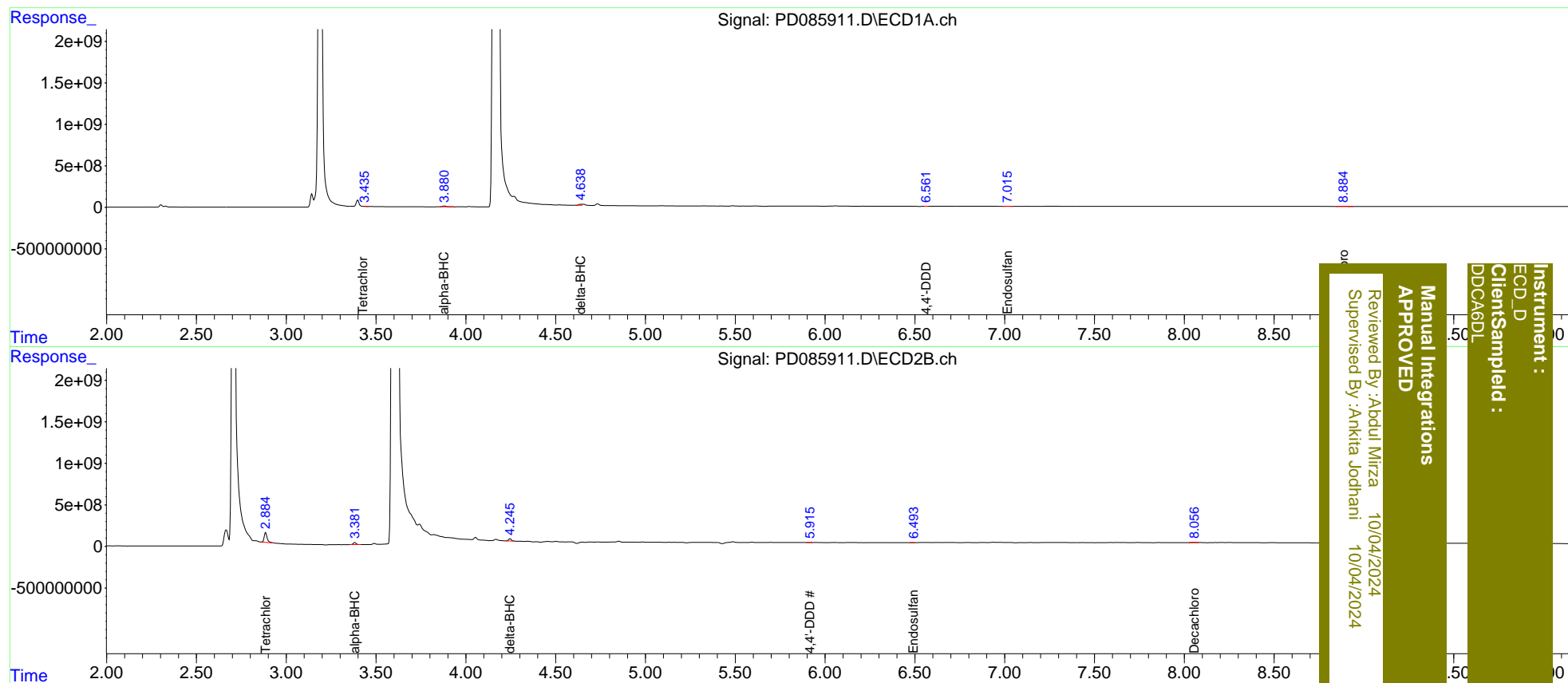
System Monitoring Compounds						
1) SA Tetrachlo...	3.435	2.884	13772594	1380.2E6	12.038m	325.479m#
2) SA Decachlor...	8.886	8.056	18438639	40245886	10.139	10.949m
Target Compounds						
2) A alpha-BHC	3.881	3.382	128.1E6	281.6E6	61.506	44.634 #
7) B delta-BHC	4.638	4.245	136.9E6	299.9E6	71.225m	50.540m#
16) A 4,4'-DDD	6.561	5.915	1989051	7167008	1.595m	1.832m
19) B Endosulfa...	7.015	6.493	5616556	8971366	3.567m	2.100m#

(f)=RT Delta > 1/2 Window (#)=Amounts differ by > 25% (m)=manual int.

Data Path : Z:\pestpcbsrv\HPCHEM1\ECD_D\Data\PD100424\
 Data File : PD085911.D
 Signal(s) : Signal #1: ECD1A.ch Signal #2: ECD2B.ch
 Acq On : 03 Oct 2024 12:22
 Operator : AR\AJ
 Sample : P4022-08DL 2X
 Misc :
 ALS Vial : 13 Sample Multiplier: 1

Integration File signal 1: autoint1.e
 Integration File signal 2: autoint2.e
 Quant Time: Oct 04 02:24:40 2024
 Quant Method : Z:\pestpcbsrv\HPCHEM1\ECD_D\Method\PD100124CLP.M
 Quant Title : GC Extractables
 QLast Update : Tue Oct 01 08:04:20 2024
 Response via : Initial Calibration
 Integrator: ChemStation

Volume Inj. : 1 µl
 Signal #1 Phase : ZB-MR1 Signal #2 Phase: ZB-MR2
 Signal #1 Info : 30M x 0.32mm x0.5 Signal #2 Info : 30M x 0.32mm x 0.25µm



Instrument : ECD_D
 ClientSampled : DDCA6DL
 Manual Integrations APPROVED
 Reviewed By :Abdul Mirza 10/04/2024
 Supervised By :Ankita Jodhani 10/04/2024