

Data Path : Z:\pestpcbsrv\HPCHEM1\ECD_D\Data\PD100518\
 Data File : PD049629.D
 Signal(s) : Signal #1: ECD1A.CH Signal #2: ECD2B.CH
 Acq On : 05 Oct 2018 20:09
 Operator : AJ\SJ
 Sample : J5230-15
 Misc :
 ALS Vial : 17 Sample Multiplier: 1

Instrument :
 ECD_D
 ClientSampleId :
 A3Z15

Integration File signal 1: autoint1.e
 Integration File signal 2: autoint2.e
 Quant Time: Oct 06 00:50:06 2018
 Quant Method : Z:\pestpcbsrv\HPCHEM1\ECD_D\Method\PD100518CLP.M
 Quant Title : GC Extractables
 QLast Update : Fri Oct 05 23:35:22 2018
 Response via : Initial Calibration
 Integrator: ChemStation 6890 Scale Mode: Large solvent peaks clipped

Volume Inj. : 1 µl
 Signal #1 Phase : ZB-MR2 Signal #2 Phase: ZB-MR1
 Signal #1 Info : 30M x 0.32mm x0.2 Signal #2 Info : 30M x 0.32mm x 0.50µm

Compound	RT#1	RT#2	Resp#1	Resp#2	ng/ml	ng/ml

System Monitoring Compounds						
1) SA Tetrachlo...	3.284	4.035	23528111	178.6E6	19.440	20.349
27) SA Decachlor...	7.879	9.128	43544677	284.0E6	39.171	39.685

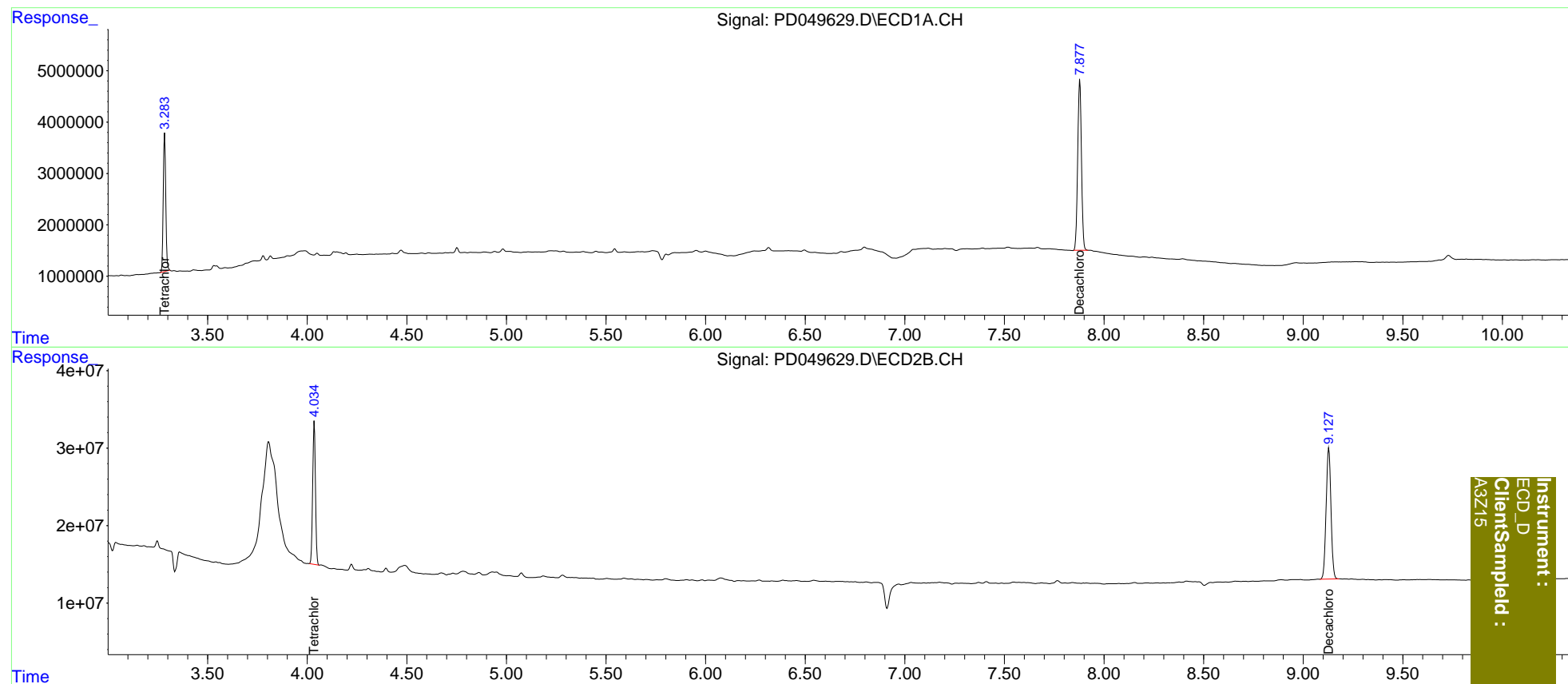
Target Compounds

(f)=RT Delta > 1/2 Window (#)=Amounts differ by > 25% (m)=manual int.

Data Path : Z:\pestpcbsrv\HPCHEM1\ECD_D\Data\PD100518\
Data File : PD049629.D
Signal(s) : Signal #1: ECD1A.CH Signal #2: ECD2B.CH
Acq On : 05 Oct 2018 20:09
Operator : AJ\SJ
Sample : J5230-15
Misc :
ALS Vial : 17 Sample Multiplier: 1

Integration File signal 1: autoint1.e
Integration File signal 2: autoint2.e
Quant Time: Oct 06 00:50:06 2018
Quant Method : Z:\pestpcbsrv\HPCHEM1\ECD_D\Method\PD100518CLP.M
Quant Title : GC Extractables
QLast Update : Fri Oct 05 23:35:22 2018
Response via : Initial Calibration
Integrator: ChemStation 6890 Scale Mode: Large solvent peaks clipped

Volume Inj. : 1 µl
Signal #1 Phase : ZB-MR2 Signal #2 Phase: ZB-MR1
Signal #1 Info : 30M x 0.32mm x 0.2 Signal #2 Info : 30M x 0.32mm x 0.50µm



Instrument :
ECD_D
ClientSampleId :
A3Z15