

Data Path : Z:\pestpcbsrv\HPCHEM1\ECD\_D\Data\PD100518\  
 Data File : PD049639.D  
 Signal(s) : Signal #1: ECD1A.CH Signal #2: ECD2B.CH  
 Acq On : 05 Oct 2018 23:08  
 Operator : AJ\SJ  
 Sample : J5230-07MS  
 Misc :  
 ALS Vial : 24 Sample Multiplier: 1

Instrument :  
 ECD\_D  
 ClientSampleID :  
 A3Z04MS

Manual Integrations  
 APPROVED

Sohil  
 10/8/2018 10:44:55 AM

Integration File signal 1: autoint1.e  
 Integration File signal 2: autoint2.e  
 Quant Time: Oct 06 00:51:06 2018  
 Quant Method : Z:\pestpcbsrv\HPCHEM1\ECD\_D\Method\PD100518CLP.M  
 Quant Title : GC Extractables  
 QLast Update : Fri Oct 05 23:35:22 2018  
 Response via : Initial Calibration  
 Integrator: ChemStation 6890 Scale Mode: Large solvent peaks clipped

Volume Inj. : 1 µl  
 Signal #1 Phase : ZB-MR1 Signal #2 Phase: ZB-MR1  
 Signal #1 Info : 30M x 0.32mm x0.2 Signal #2 Info : 30M x 0.32mm x 0.50µm

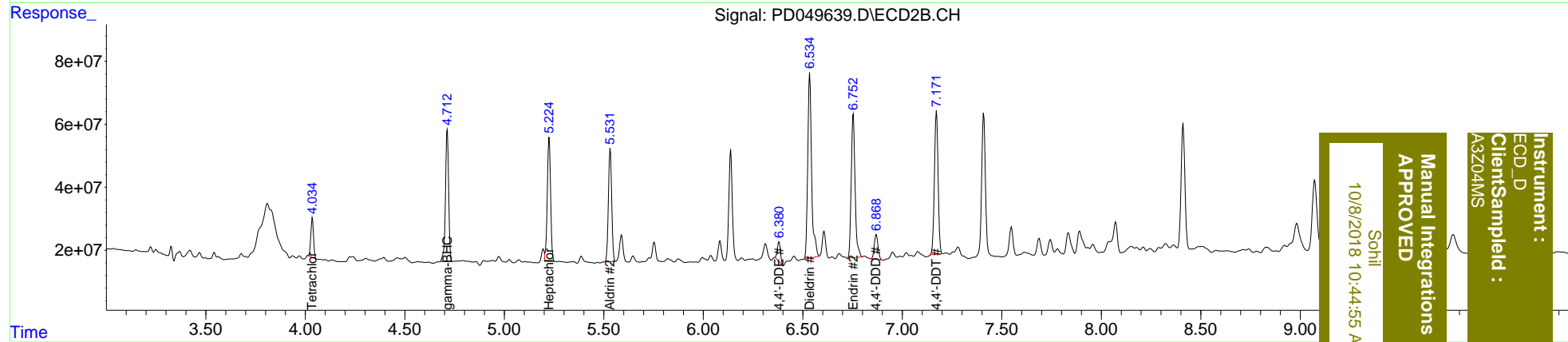
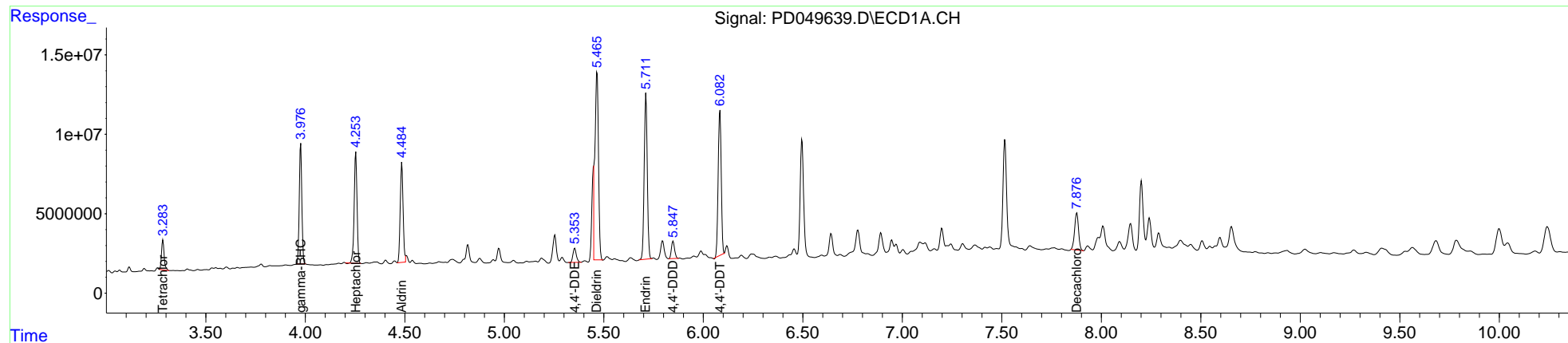
	Compound	RT#1	RT#2	Resp#1	Resp#2	ng/ml	ng/ml
-----							
System Monitoring Compounds							
1)	SA Tetrachlo...	3.283	4.036	17059398	117.7E6	14.095m	13.416
27)	SA Decachlor...	7.877	9.127	32160021	220.8E6	28.930	30.850m
Target Compounds							
3)	MA gamma-BHC...	3.977	4.712	68747264	466.2E6	41.108	40.685m
4)	MA Heptachlor	4.254	5.224	70118848	456.4E6	41.837	40.544m
5)	MB Aldrin	4.484	5.532	62925085	413.4E6	39.798m	40.463
12)	B 4,4'-DDE	5.354	6.380	10727955	67635238	7.732	7.556m
13)	MA Dieldrin	5.465	6.534	146.6E6	788.0E6	95.976m	85.022m
14)	MA Endrin	5.712	6.754	112.5E6	614.8E6	91.618	98.972
16)	A 4,4'-DDD	5.848	6.870	11949826	101.4E6	10.662	14.389 #
17)	MA 4,4'-DDT	6.084	7.172	97526954	582.2E6	83.980	90.537
-----							

(f)=RT Delta > 1/2 Window (#)=Amounts differ by > 25% (m)=manual int.

Data Path : Z:\pestpcbsrv\HPCHEM1\ECD\_D\Data\PD100518\  
 Data File : PD049639.D  
 Signal(s) : Signal #1: ECD1A.CH Signal #2: ECD2B.CH  
 Acq On : 05 Oct 2018 23:08  
 Operator : AJ\SJ  
 Sample : J5230-07MS  
 Misc :  
 ALS Vial : 24 Sample Multiplier: 1

Integration File signal 1: autoint1.e  
 Integration File signal 2: autoint2.e  
 Quant Time: Oct 06 00:51:06 2018  
 Quant Method : Z:\pestpcbsrv\HPCHEM1\ECD\_D\Method\PD100518CLP.M  
 Quant Title : GC Extractables  
 QLast Update : Fri Oct 05 23:35:22 2018  
 Response via : Initial Calibration  
 Integrator: ChemStation 6890 Scale Mode: Large solvent peaks clipped

Volume Inj. : 1 µl  
 Signal #1 Phase : ZB-MR2 Signal #2 Phase: ZB-MR1  
 Signal #1 Info : 30M x 0.32mm x0.2 Signal #2 Info : 30M x 0.32mm x 0.50µm



Instrument : ECD\_D  
 Client/Sample Id : A3Z04MS  
 Manual Integrations APPROVED  
 Sohli  
 10/8/2018 10:44:56 AM