

Data Path : Z:\pestpcbsrv\HPCHEM1\ECD_D\Data\PD100523\
 Data File : PD078669.D
 Signal(s) : Signal #1: ECD1A.ch Signal #2: ECD2B.ch
 Acq On : 04 Oct 2023 14:09
 Operator : AR\AJ
 Sample : 04624-05
 Misc :
 ALS Vial : 23 Sample Multiplier: 1

Instrument :
 ECD_D
 ClientSampleId :

Integration File signal 1: autoint1.e
 Integration File signal 2: autoint2.e
 Quant Time: Oct 04 21:24:42 2023
 Quant Method : Z:\pestpcbsrv\HPCHEM1\ECD_D\Method\PD092823CLP.M
 Quant Title : GC Extractables
 QLast Update : Thu Sep 28 13:47:59 2023
 Response via : Initial Calibration
 Integrator: ChemStation

Volume Inj. : 1 µl
 Signal #1 Phase : ZB-MR2 Signal #2 Phase: ZB-MR2
 Signal #1 Info : 30M x 0.32mm x0.5 Signal #2 Info : 30M x 0.32mm x 0.25µm

	Compound	RT#1	RT#2	Resp#1	Resp#2	ng/ml	ng/ml

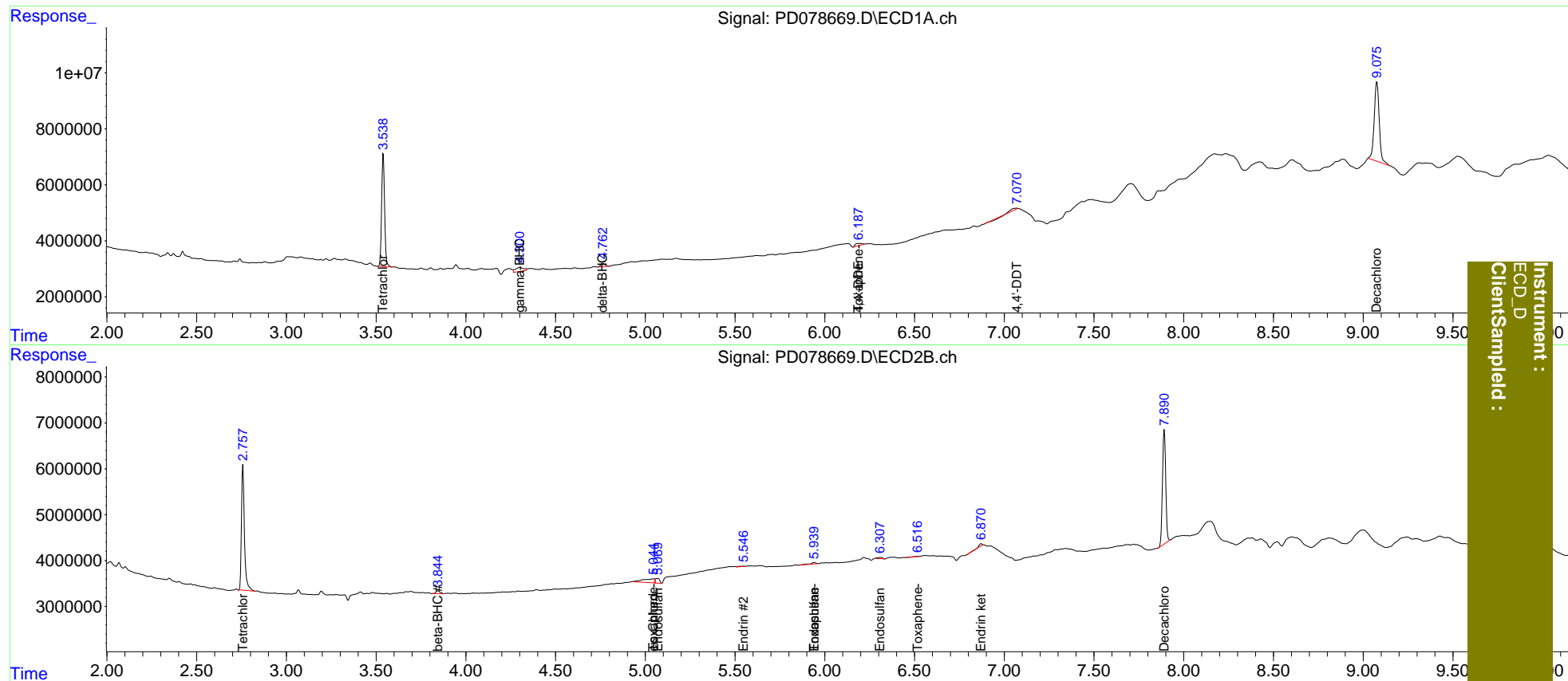
System Monitoring Compounds							
1)	SA Tetrachlo...	3.540	2.758	46511766	31349921	18.942	18.977
2)	SA Decachlor...	9.076	7.892	55092076	31230758	17.043	16.870
Target Compounds							
3)	MA gamma-BHC...	4.302f	3.599	4653398	6750	1.173	<MDL #
5)	MB Aldrin	0.000	4.208	0	134249	N.D.	<MDL
6)	B beta-BHC	0.000	3.845f	0	965791	N.D.	0.887
7)	B delta-BHC	4.763	0.000	1951731	0	0.490	N.D. #
9)	A Endosulfan I	0.000	5.070	0	1763231	N.D.	0.857
11)	B cis-Chlor...	0.000	5.045	0	3877436	N.D.	1.688
12)	B 4,4'-DDE	6.188	0.000	2006378	0	0.561	N.D. #
14)	MA Endrin	0.000	5.548f	0	214196	N.D.	0.102
15)	B Endosulfa...	6.832	5.941	-137459	695240	N.D.	0.342
17)	MA 4,4'-DDT	7.071f	0.000	1499778	0	0.581	N.D. #
19)	B Endosulfa...	0.000	6.308	0	530162	N.D.	0.285
21)	B Endrin ke...	0.000	6.871f	0	915875	N.D.	0.426
22)	Toxaphene-1	6.188f	5.045f	2006378	3877436	77.329	321.033 #
24)	Toxaphene-3	0.000	5.941	0	695240	N.D.	45.292
25)	Toxaphene-4	0.000	6.517f	0	122828	N.D.	2.780

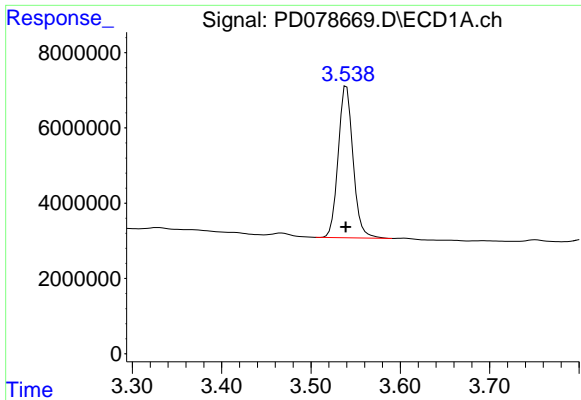
(f)=RT Delta > 1/2 Window (#)=Amounts differ by > 25% (m)=manual int.

Data Path : Z:\pestpcbsrv\HPCHEM1\ECD_D\Data\PD100523\
 Data File : PD078669.D
 Signal(s) : Signal #1: ECD1A.ch Signal #2: ECD2B.ch
 Acq On : 04 Oct 2023 14:09
 Operator : AR\AJ
 Sample : 04624-05
 Misc :
 ALS Vial : 23 Sample Multiplier: 1

Integration File signal 1: autoint1.e
 Integration File signal 2: autoint2.e
 Quant Time: Oct 04 21:24:42 2023
 Quant Method : Z:\pestpcbsrv\HPCHEM1\ECD_D\Method\PD092823CLP.M
 Quant Title : GC Extractables
 QLast Update : Thu Sep 28 13:47:59 2023
 Response via : Initial Calibration
 Integrator: ChemStation

Volume Inj. : 1 µl
 Signal #1 Phase : ZB-MR1 Signal #2 Phase: ZB-MR2
 Signal #1 Info : 30M x 0.32mm x0.5 Signal #2 Info : 30M x 0.32mm x 0.25µm

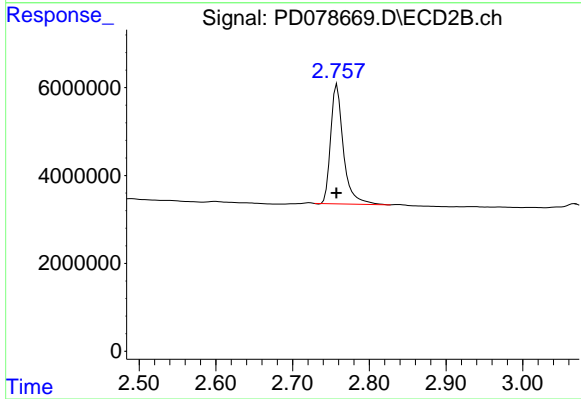




#1 Tetrachloro-m-xylene

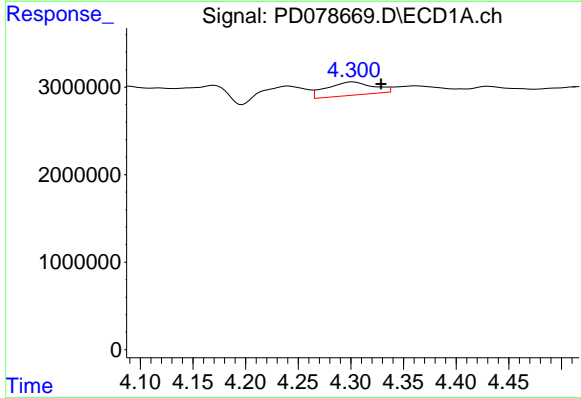
R.T.: 3.540 min
 Delta R.T.: 0.000 min
 Response: 46511766
 Conc: 18.94 ng/ml

Instrument :
 ECD_D
 ClientSampleId :



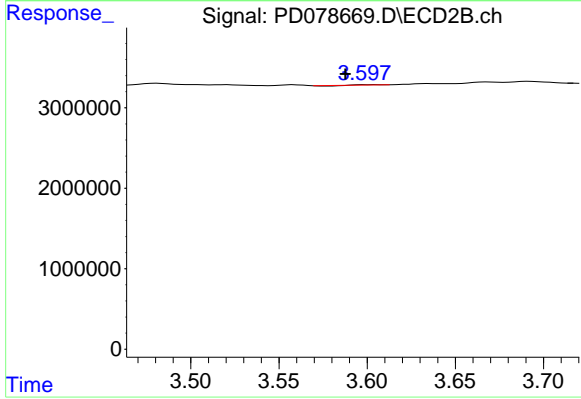
#1 Tetrachloro-m-xylene

R.T.: 2.758 min
 Delta R.T.: 0.000 min
 Response: 31349921
 Conc: 18.98 ng/ml



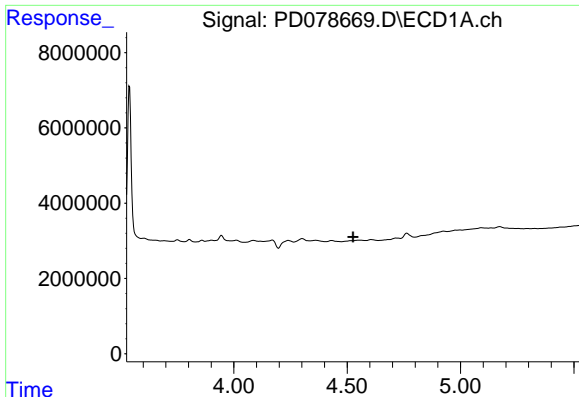
#3 gamma-BHC (Lindane)

R.T.: 4.302 min
 Delta R.T.: -0.027 min
 Response: 4653398
 Conc: 1.17 ng/ml



#3 gamma-BHC (Lindane)

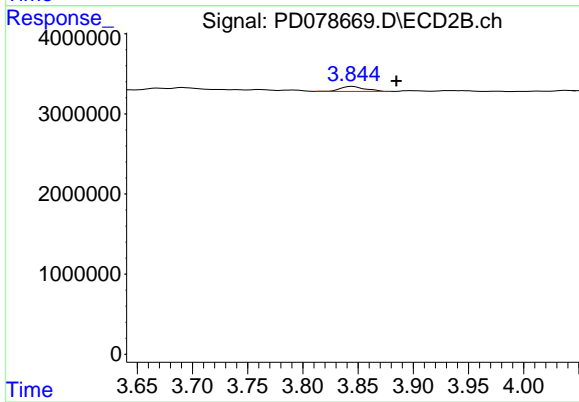
R.T.: 3.599 min
 Delta R.T.: 0.011 min
 Response: 6750
 Conc: N.D.



#6 beta-BHC

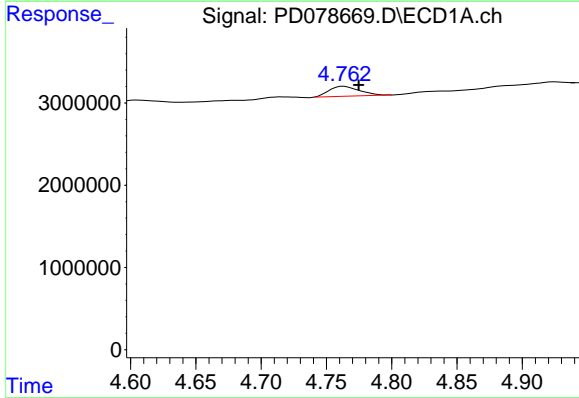
R.T.: 0.000 min
 Exp R.T.: 4.527 min
 Response: 0
 Conc: N.D.

Instrument :
 ECD_D
 ClientSampleId :



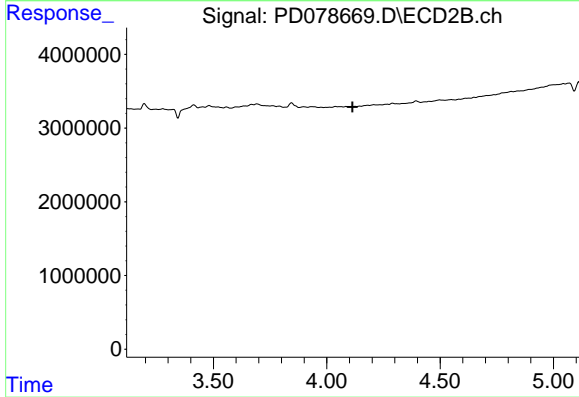
#6 beta-BHC

R.T.: 3.845 min
 Delta R.T.: -0.040 min
 Response: 965791
 Conc: 0.89 ng/ml



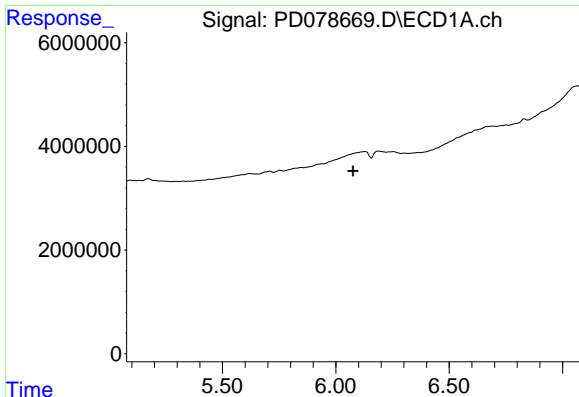
#7 delta-BHC

R.T.: 4.763 min
 Delta R.T.: -0.011 min
 Response: 1951731
 Conc: 0.49 ng/ml



#7 delta-BHC

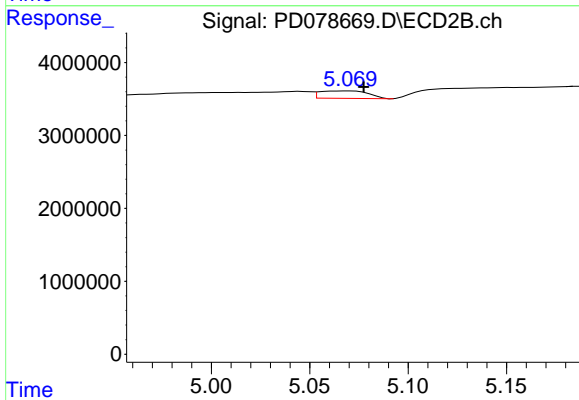
R.T.: 0.000 min
 Exp R.T.: 4.114 min
 Response: 0
 Conc: N.D.



#9 Endosulfan I

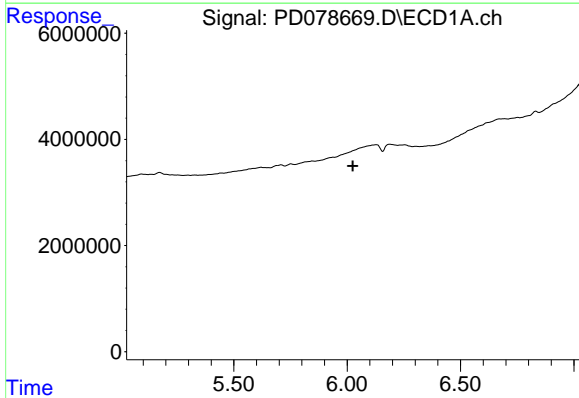
R.T.: 0.000 min
 Exp R.T. : 6.076 min
 Response: 0
 Conc: N.D.

Instrument :
 ECD_D
 ClientSampleId :



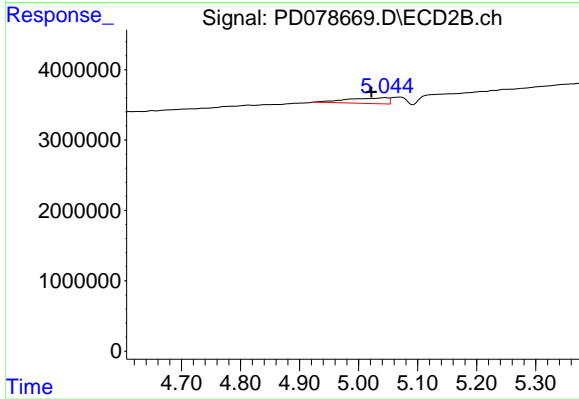
#9 Endosulfan I

R.T.: 5.070 min
 Delta R.T.: -0.007 min
 Response: 1763231
 Conc: 0.86 ng/ml



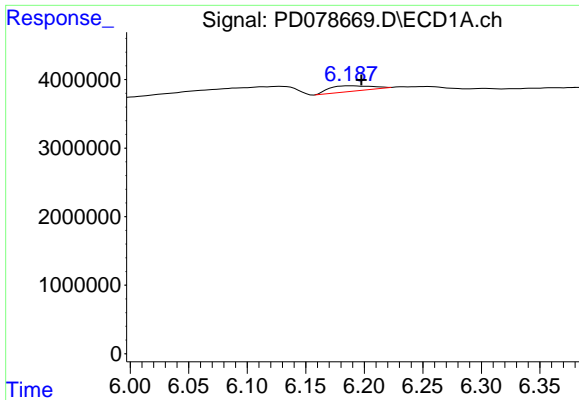
#11 cis-Chlordane

R.T.: 0.000 min
 Exp R.T. : 6.025 min
 Response: 0
 Conc: N.D.



#11 cis-Chlordane

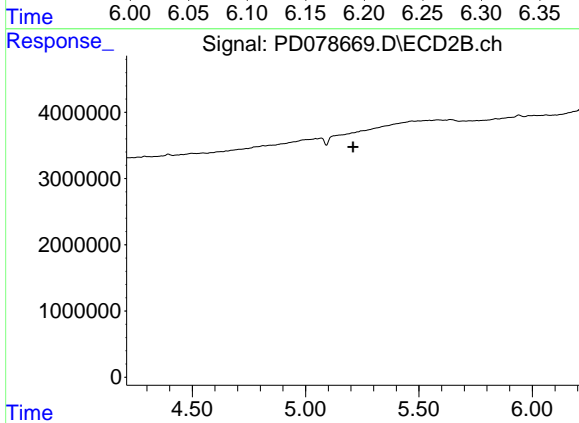
R.T.: 5.045 min
 Delta R.T.: 0.023 min
 Response: 3877436
 Conc: 1.69 ng/ml



#12 4,4'-DDE

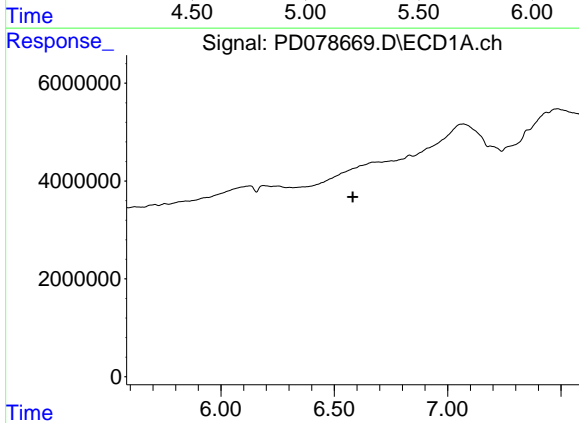
R.T.: 6.188 min
 Delta R.T.: -0.010 min
 Response: 2006378
 Conc: 0.56 ng/ml

Instrument :
 ECD_D
 ClientSampleId :



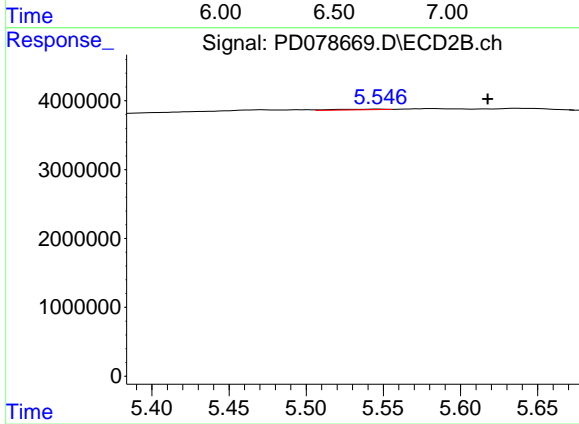
#12 4,4'-DDE

R.T.: 0.000 min
 Exp R.T. : 5.210 min
 Response: 0
 Conc: N.D.



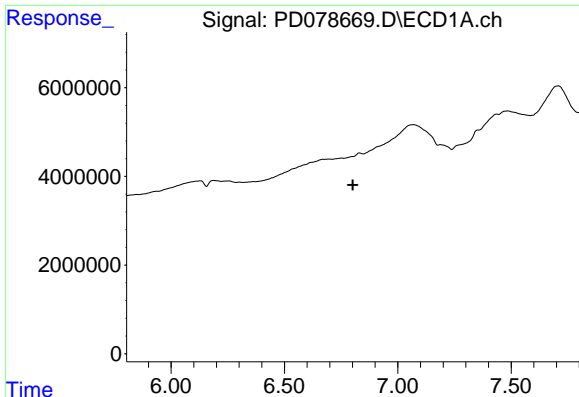
#14 Endrin

R.T.: 0.000 min
 Exp R.T. : 6.582 min
 Response: 0
 Conc: N.D.



#14 Endrin

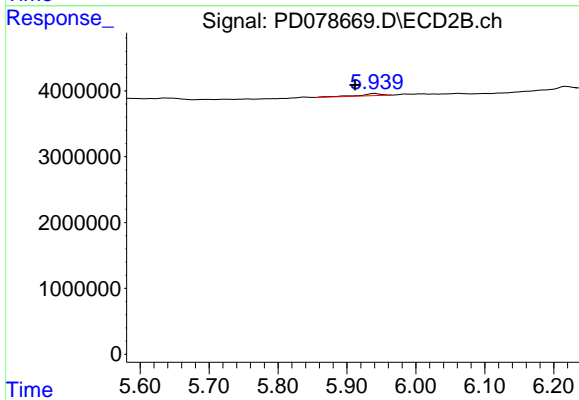
R.T.: 5.548 min
 Delta R.T.: -0.070 min
 Response: 214196
 Conc: 0.10 ng/ml



#15 Endosulfan II

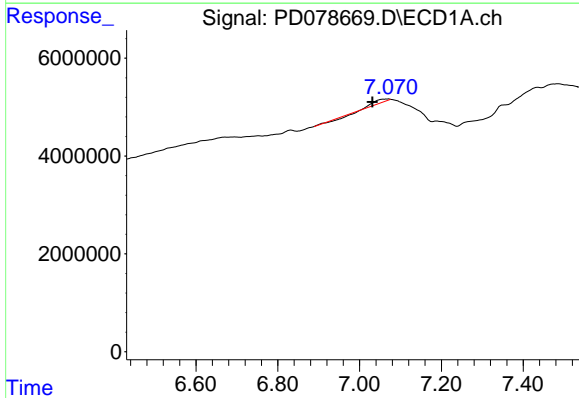
R.T.: 6.832 min
 Delta R.T.: 0.030 min
 Response: -137459
 Conc: N.D.

Instrument :
 ECD_D
 ClientSampleId :



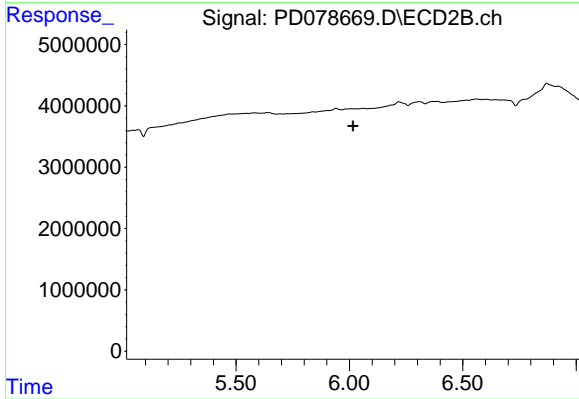
#15 Endosulfan II

R.T.: 5.941 min
 Delta R.T.: 0.029 min
 Response: 695240
 Conc: 0.34 ng/ml



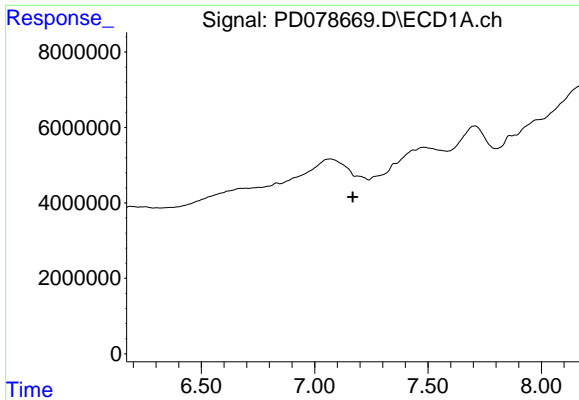
#17 4,4'-DDT

R.T.: 7.071 min
 Delta R.T.: 0.040 min
 Response: 1499778
 Conc: 0.58 ng/ml



#17 4,4'-DDT

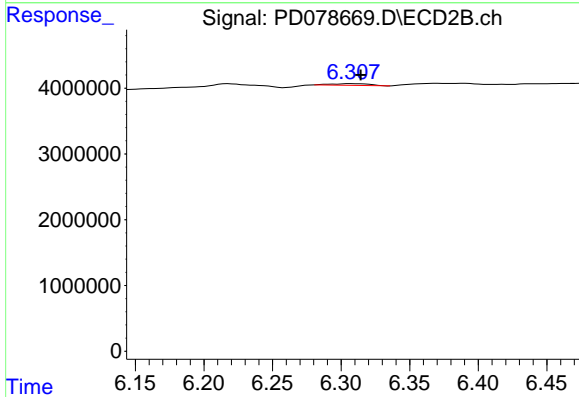
R.T.: 0.000 min
 Exp R.T. : 6.016 min
 Response: 0
 Conc: N.D.



#19 Endosulfan Sulfate

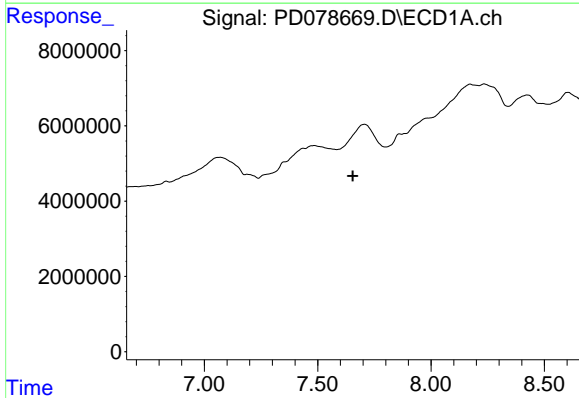
R.T.: 0.000 min
 Exp R.T. : 7.168 min
 Response: 0
 Conc: N.D.

Instrument :
 ECD_D
 ClientSampleId :



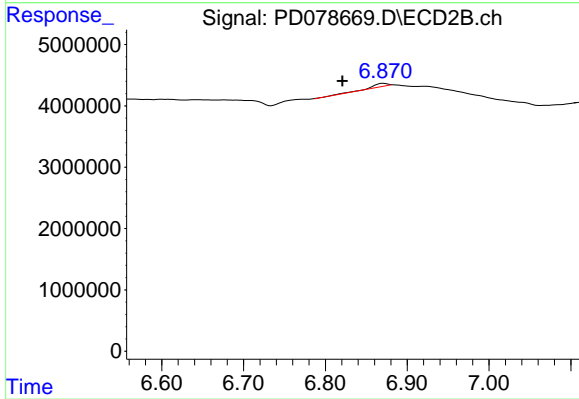
#19 Endosulfan Sulfate

R.T.: 6.308 min
 Delta R.T.: -0.006 min
 Response: 530162
 Conc: 0.28 ng/ml



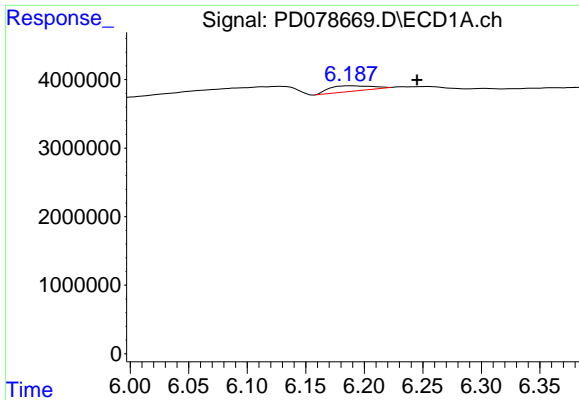
#21 Endrin ketone

R.T.: 0.000 min
 Exp R.T. : 7.654 min
 Response: 0
 Conc: N.D.



#21 Endrin ketone

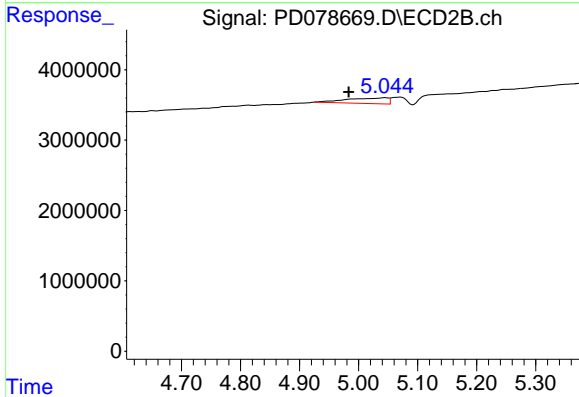
R.T.: 6.871 min
 Delta R.T.: 0.051 min
 Response: 915875
 Conc: 0.43 ng/ml



#22 Toxaphene-1

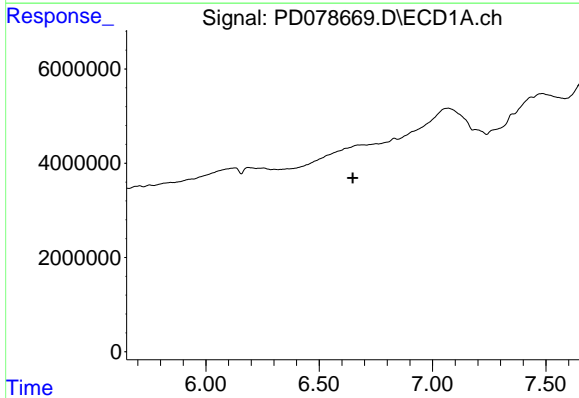
R.T.: 6.188 min
 Delta R.T.: -0.057 min
 Response: 2006378
 Conc: 77.33 ng/ml

Instrument :
 ECD_D
 ClientSampleId :



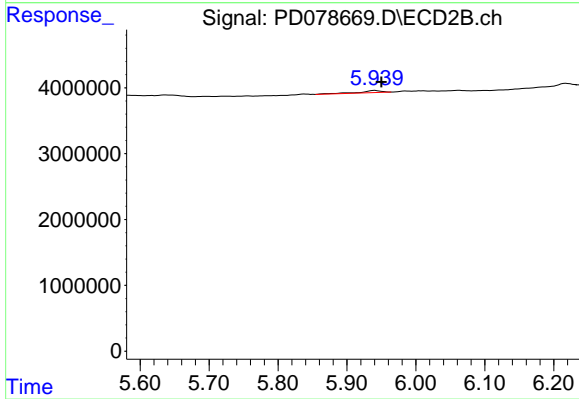
#22 Toxaphene-1

R.T.: 5.045 min
 Delta R.T.: 0.061 min
 Response: 3877436
 Conc: 321.03 ng/ml



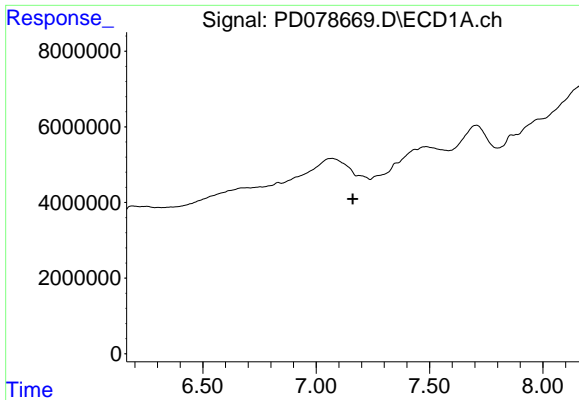
#24 Toxaphene-3

R.T.: 0.000 min
 Exp R.T. : 6.648 min
 Response: 0
 Conc: N.D.



#24 Toxaphene-3

R.T.: 5.941 min
 Delta R.T.: -0.010 min
 Response: 695240
 Conc: 45.29 ng/ml

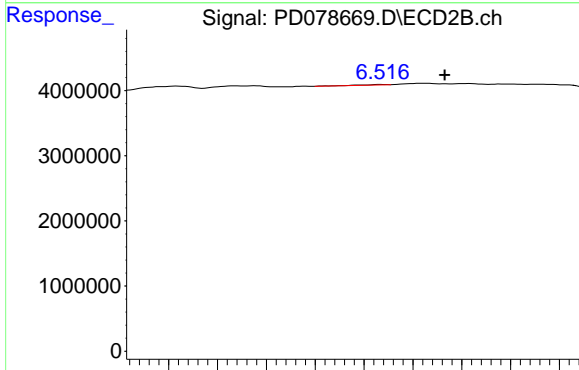


#25 Toxaphene-4

R.T.: 0.000 min
 Exp R.T.: 7.161 min
 Response: 0
 Conc: N.D.

Instrument :
 ECD_D
 ClientSampleId :

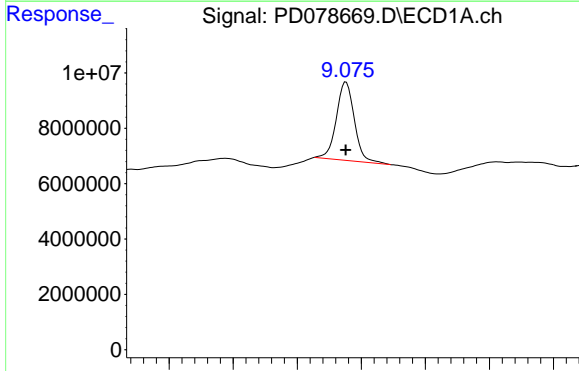
Time 6.50 7.00 7.50 8.00



#25 Toxaphene-4

R.T.: 6.517 min
 Delta R.T.: -0.065 min
 Response: 122828
 Conc: 2.78 ng/ml

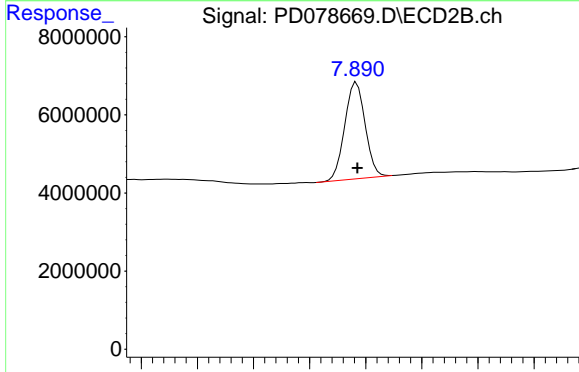
Time 6.30 6.35 6.40 6.45 6.50 6.55 6.60 6.65 6.70



#27 Decachlorobiphenyl

R.T.: 9.076 min
 Delta R.T.: 0.000 min
 Response: 55092076
 Conc: 17.04 ng/ml

Time 8.80 8.90 9.00 9.10 9.20 9.30 9.40



#27 Decachlorobiphenyl

R.T.: 7.892 min
 Delta R.T.: 0.000 min
 Response: 31230758
 Conc: 16.87 ng/ml

Time 7.70 7.75 7.80 7.85 7.90 7.95 8.00 8.05