

Data Path : Z:\pestpcbsrv\HPCHEM1\ECD\_0\Data\PO100620\  
 Data File : PO072081.D  
 Signal(s) : Signal #1: ECD1A.CH Signal #2: ECD2B.CH  
 Acq On : 07 Oct 2020 2:51  
 Operator : DD\AJ  
 Sample : AR1660CCC500  
 Misc :  
 ALS Vial : 3 Sample Multiplier: 1

Instrument :  
 ECD\_D  
 ClientSampled :

Integration File signal 1: autoint1.e  
 Integration File signal 2: autoint2.e  
 Quant Time: Oct 07 04:26:09 2020  
 Quant Method : Z:\pestpcbsrv\HPCHEM1\ECD\_0\methods\PO100320.M  
 Quant Title : GC EXTRACTABLES  
 QLast Update : Mon Oct 05 11:48:20 2020  
 Response via : Initial Calibration  
 Integrator: ChemStation 6890 Scale Mode: Small noise peaks clipped

Volume Inj. : 2 µl  
 Signal #1 Phase : ZB-MR1 Signal #2 Phase: ZB-MR2  
 Signal #1 Info : 30Mx0.32mmx 0.50µ Signal #2 Info : 30M x 0.32mm x 0.25µm

Compound	RT#1	RT#2	Resp#1	Resp#2	ng/ml	ng/ml
System Monitoring Compounds						
1) SA Tetrachlo...	4.325	3.510	3980365	1835223	55.417	48.997
2) SA Decachlor...	9.931	8.682	5401998	2692842	49.061	47.343
Target Compounds						
3) L1 AR-1016-1	5.629	4.731	1646971	753968	543.554	464.095
4) L1 AR-1016-2	5.650	4.748	2354939	1060091	539.175	466.919
5) L1 AR-1016-3	5.714	4.933	1402080	575900	546.710	468.117
6) L1 AR-1016-4	5.819	4.990	1195919	503590	550.806	471.818
7) L1 AR-1016-5	6.128	5.210	1176754	600470	531.602	473.859
8) L2 AR-1221-1	4.577	3.758	131325	70029	178.179	161.696
9) L2 AR-1221-2	4.676	3.854	203331	101523	368.111	314.316
10) L2 AR-1221-3	4.763	3.939	741505	380310	410.327	383.190
11) L3 AR-1232-1	4.763	3.939	741505	380310	489.887	446.787
12) L3 AR-1232-2	5.335	4.748	1079060	1060091	1360.460	1127.280
13) L3 AR-1232-3	5.650	4.933	2354939	575900	1367.905	1158.245
14) L3 AR-1232-4	5.819	5.032	1195919	532706	1371.110	1292.107
15) L3 AR-1232-5	5.917	5.210	940163	600470	1719.007	1237.313 #
16) L4 AR-1242-1	5.629	4.731	1646971	753968	755.405	676.311
17) L4 AR-1242-2	5.650	4.748	2354939	1060091	757.916	677.800
18) L4 AR-1242-3	5.714	4.933	1402080	575900	753.089	659.906
19) L4 AR-1242-4	5.819	5.032	1195919	532706	772.979	666.913
20) L4 AR-1242-5	6.591	5.583	234001	515411	120.883	442.251 #
21) L5 AR-1248-1	5.629	4.731	1646971	753968	1045.785	886.390
22) L5 AR-1248-2	5.917	4.990	940163	503590	456.845	420.871
23) L5 AR-1248-3	6.128	5.032	1176754	532706	470.241	469.663
24) L5 AR-1248-4	6.553	5.210	323855	600470	95.567	424.498 #
25) L5 AR-1248-5	6.591	5.625	234001	83320	73.643	53.631 #
26) L6 AR-1254-1	6.520	5.583	976360	515411	279.459	215.668
27) L6 AR-1254-2	6.746	5.744	1081204	457658	196.385	213.962
28) L6 AR-1254-3	7.123	6.154	680448	269757	117.823	79.453 #
29) L6 AR-1254-4	7.415	6.393	685717	159685	117.700	65.763 #
30) L6 AR-1254-5	7.838	6.813	4095318	1709810	760.948	522.541 #
31) L7 AR-1260-1	7.285	6.289	2828911	1204195	590.257	470.314
32) L7 AR-1260-2	7.551	6.490	3984654	1511148	531.985	472.369
33) L7 AR-1260-3	7.908	6.636	3201315	1380036	502.143	467.616
34) L7 AR-1260-4	8.135	7.111	2975137	1217349	495.646	460.099
35) L7 AR-1260-5	8.450	7.364	6908270	3051528	498.541	459.297
36) L8 AR-1262-1	7.908	6.813	3201315	1709810	388.489	965.436 #
37) L8 AR-1262-2	8.450	7.364	6908270	3051528	495.984	485.218
38) L8 AR-1262-3	8.718	7.643	1605331	754723	262.274	278.198
39) L8 AR-1262-4	8.784	7.705	2590479	2304808	387.250	475.781
40) L8 AR-1262-5	9.347	8.203	2027121	938023	419.083	378.677
41) L9 AR-1268-1	8.718	7.643	1605331	754723	94.982	98.190

Data Path : Z:\pestpcbsrv\HPCHEM1\ECD\_0\Data\PO100620\  
 Data File : PO072081.D  
 Signal(s) : Signal #1: ECD1A.CH Signal #2: ECD2B.CH  
 Acq On : 07 Oct 2020 2:51  
 Operator : DD\AJ  
 Sample : AR1660CCC500  
 Misc :  
 ALS Vial : 3 Sample Multiplier: 1

Instrument :  
 ECD\_D  
 ClientSampleId :

Integration File signal 1: autoint1.e  
 Integration File signal 2: autoint2.e  
 Quant Time: Oct 07 04:26:09 2020  
 Quant Method : Z:\pestpcbsrv\HPCHEM1\ECD\_0\methods\PO100320.M  
 Quant Title : GC EXTRACTABLES  
 QLast Update : Mon Oct 05 11:48:20 2020  
 Response via : Initial Calibration  
 Integrator: ChemStation 6890 Scale Mode: Small noise peaks clipped

Volume Inj. : 2 µl  
 Signal #1 Phase : ZB-MR1 Signal #2 Phase: ZB-MR2  
 Signal #1 Info : 30Mx0.32mmx 0.50µ Signal #2 Info : 30M x 0.32mm x 0.25µm

	Compound	RT#1	RT#2	Resp#1	Resp#2	ng/ml	ng/ml
42)	L9 AR-1268-2	8.784f	7.705	2590479	2304808	182.150	330.114 #
43)	L9 AR-1268-3	8.977	7.905	227938	63594	18.545	10.650 #
44)	L9 AR-1268-4	9.347	8.203	2027121	938023	371.150	337.642
45)	L9 AR-1268-5	9.672	8.470	468093	266748	12.766	14.098

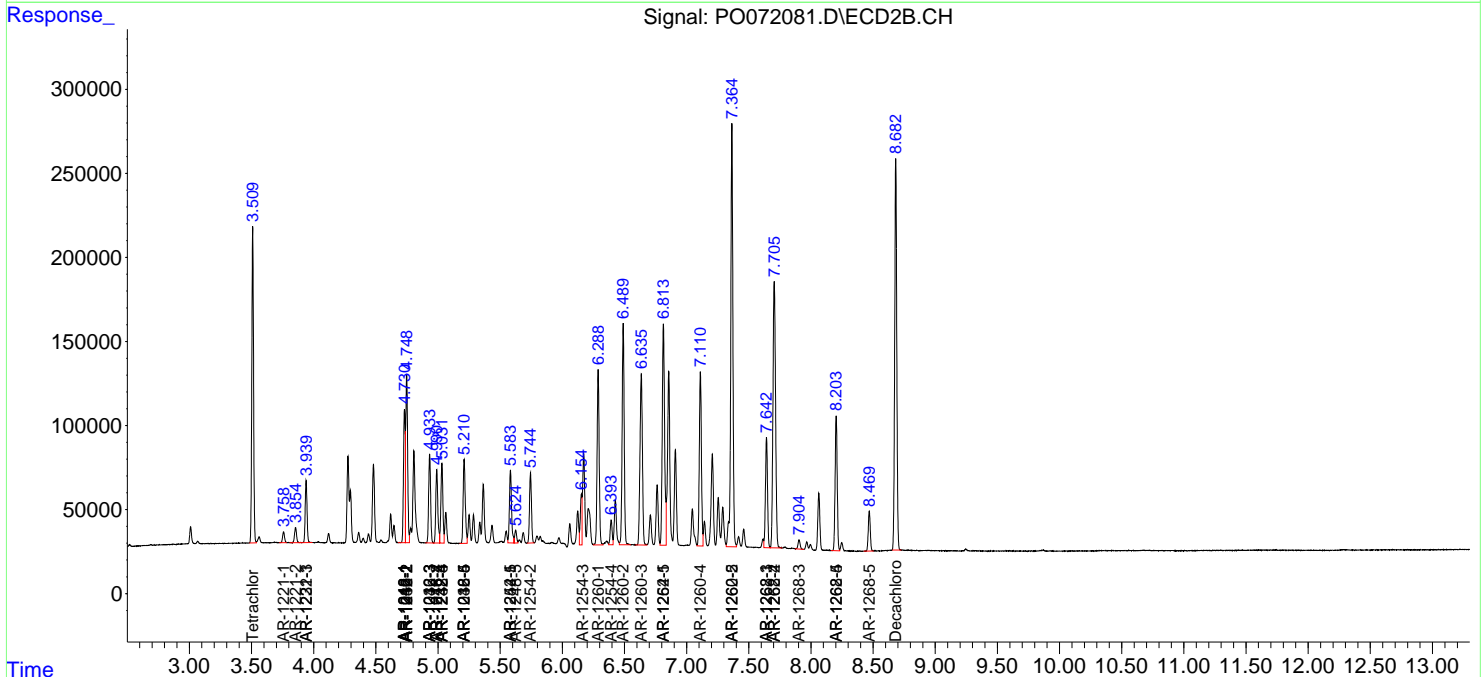
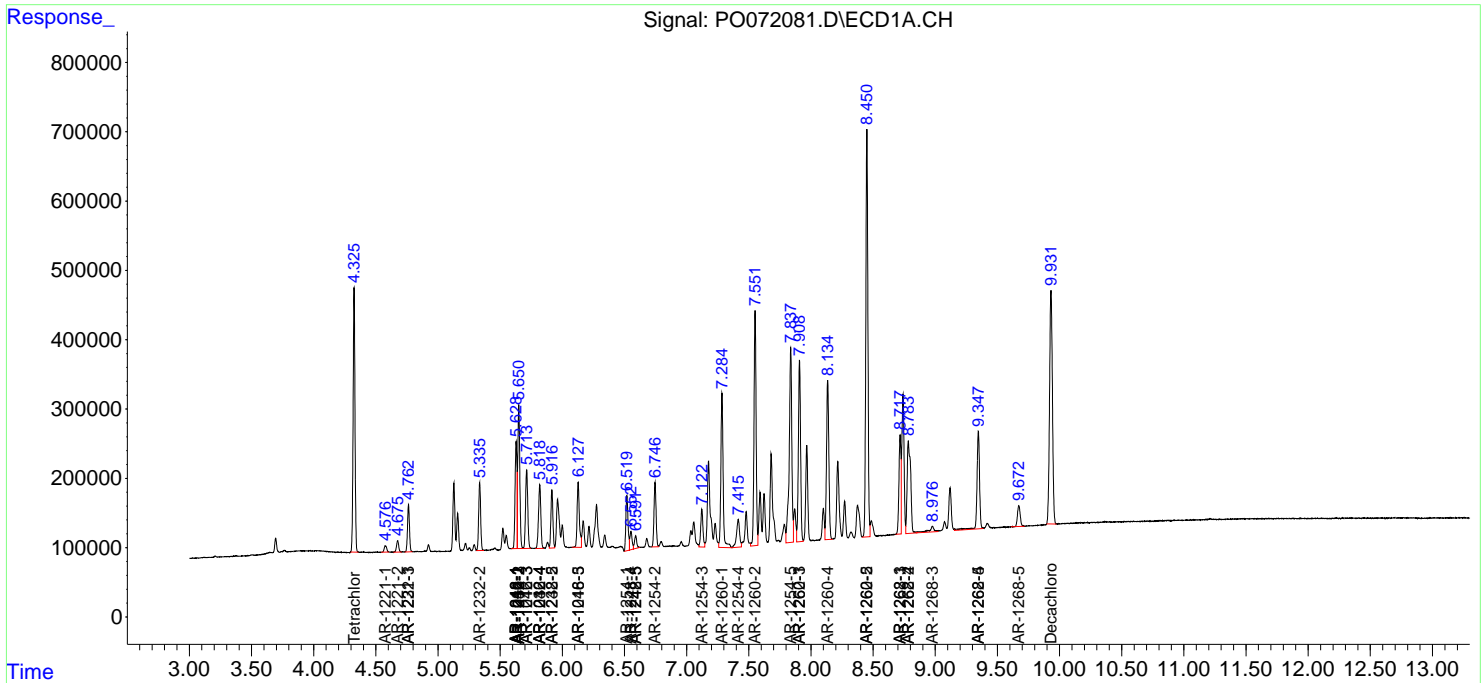
(f)=RT Delta > 1/2 Window (#)=Amounts differ by > 25% (m)=manual int.

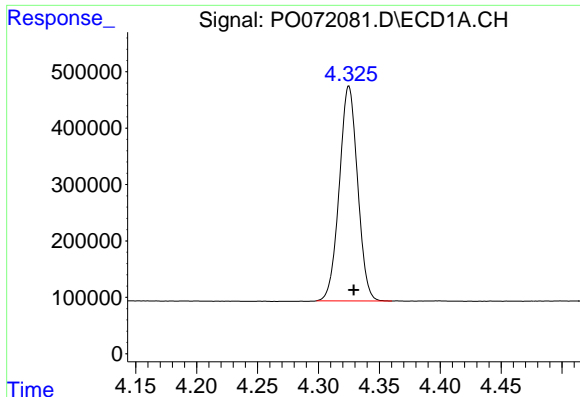
Data Path : Z:\pestpcbsrv\HPCHEM1\ECD\_0\Data\PO100620\  
 Data File : PO072081.D  
 Signal(s) : Signal #1: ECD1A.CH Signal #2: ECD2B.CH  
 Acq On : 07 Oct 2020 2:51  
 Operator : DD\AJ  
 Sample : AR1660CCC500  
 Misc :  
 ALS Vial : 3 Sample Multiplier: 1

Instrument :  
 ECD\_D  
 ClientSampled :

Integration File signal 1: autoint1.e  
 Integration File signal 2: autoint2.e  
 Quant Time: Oct 07 04:26:09 2020  
 Quant Method : Z:\pestpcbsrv\HPCHEM1\ECD\_0\methods\PO100320.M  
 Quant Title : GC EXTRACTABLES  
 QLast Update : Mon Oct 05 11:48:20 2020  
 Response via : Initial Calibration  
 Integrator: ChemStation 6890 Scale Mode: Small noise peaks clipped

Volume Inj. : 2 µl  
 Signal #1 Phase : ZB-MR1 Signal #2 Phase: ZB-MR2  
 Signal #1 Info : 30Mx0.32mmx 0.50µ Signal #2 Info : 30M x 0.32mm x 0.25µm

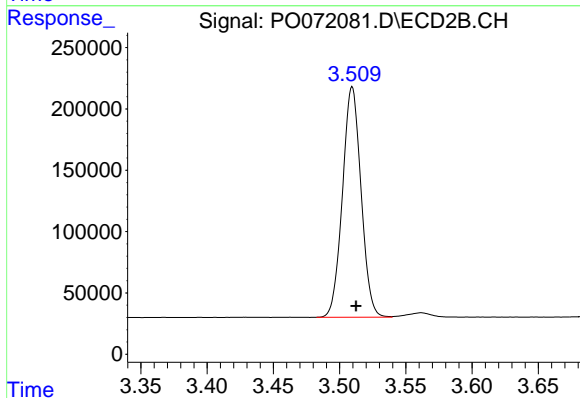




#1 Tetrachloro-m-xylene

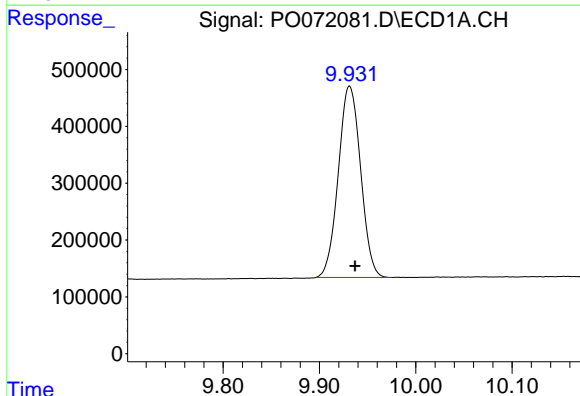
R.T.: 4.325 min  
 Delta R.T.: -0.004 min  
 Response: 3980365  
 Conc: 55.42 ng/ml

Instrument :  
 ECD\_D  
 ClientSampled :



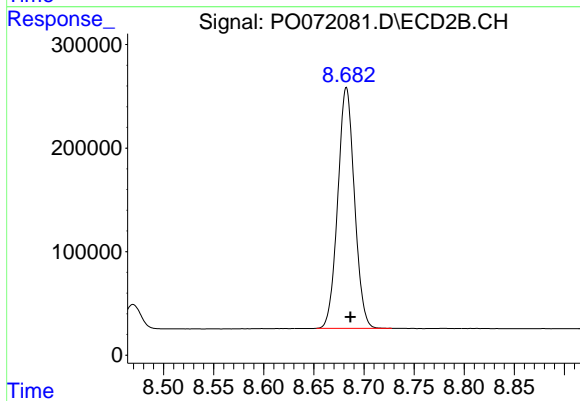
#1 Tetrachloro-m-xylene

R.T.: 3.510 min  
 Delta R.T.: -0.003 min  
 Response: 1835223  
 Conc: 49.00 ng/ml



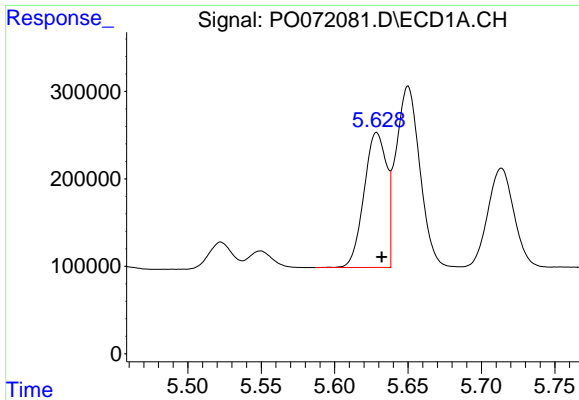
#2 Decachlorobiphenyl

R.T.: 9.931 min  
 Delta R.T.: -0.006 min  
 Response: 5401998  
 Conc: 49.06 ng/ml



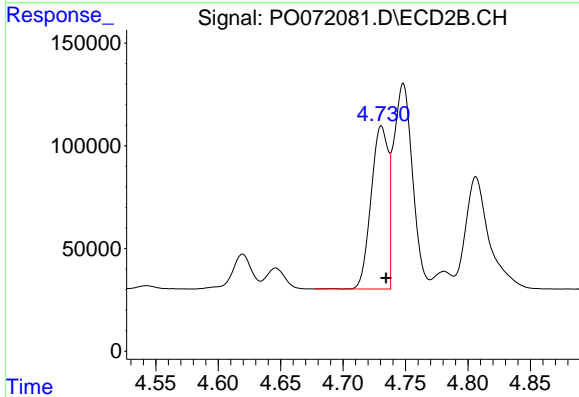
#2 Decachlorobiphenyl

R.T.: 8.682 min  
 Delta R.T.: -0.004 min  
 Response: 2692842  
 Conc: 47.34 ng/ml

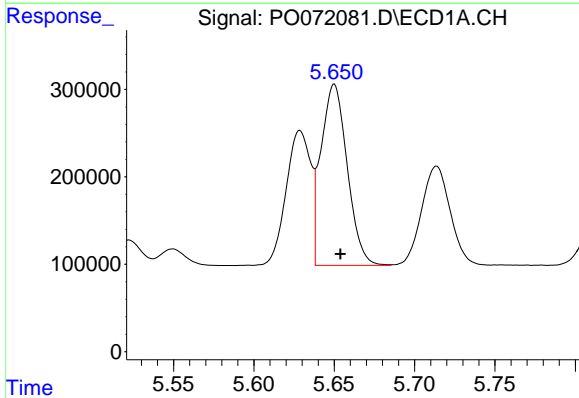


#3 AR-1016-1  
 R.T.: 5.629 min  
 Delta R.T.: -0.003 min  
 Response: 1646971  
 Conc: 543.55 ng/ml

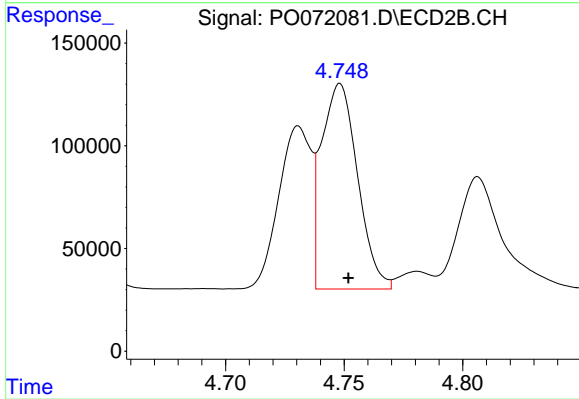
Instrument :  
 ECD\_D  
 ClientSampled :



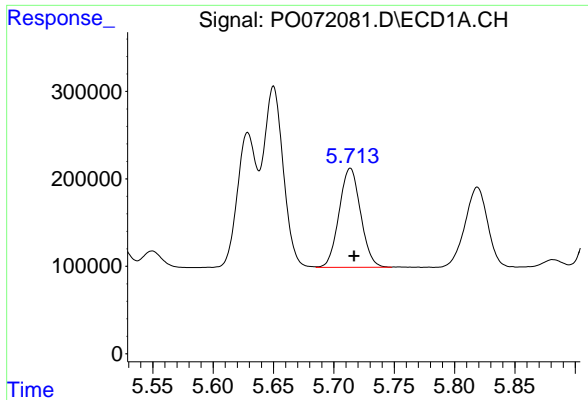
#3 AR-1016-1  
 R.T.: 4.731 min  
 Delta R.T.: -0.004 min  
 Response: 753968  
 Conc: 464.10 ng/ml



#4 AR-1016-2  
 R.T.: 5.650 min  
 Delta R.T.: -0.004 min  
 Response: 2354939  
 Conc: 539.18 ng/ml

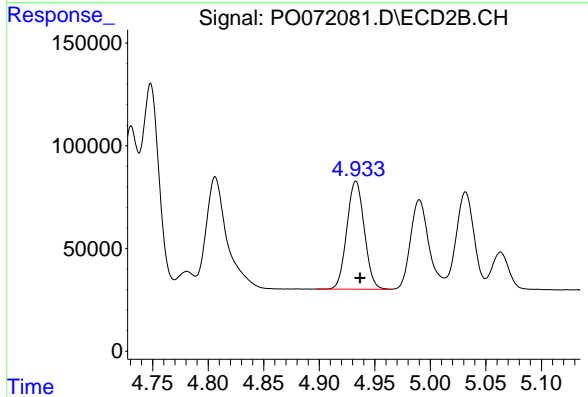


#4 AR-1016-2  
 R.T.: 4.748 min  
 Delta R.T.: -0.004 min  
 Response: 1060091  
 Conc: 466.92 ng/ml

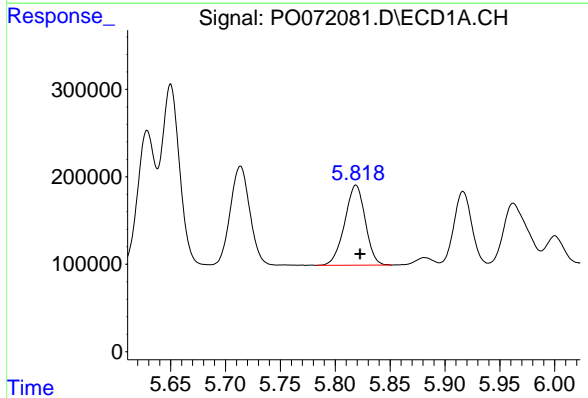


#5 AR-1016-3  
 R.T.: 5.714 min  
 Delta R.T.: -0.003 min  
 Response: 1402080  
 Conc: 546.71 ng/ml

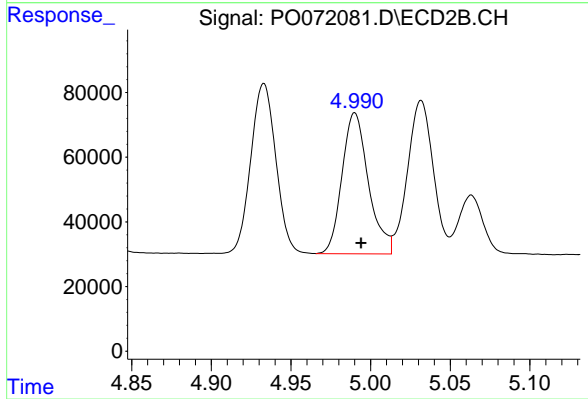
Instrument :  
 ECD\_D  
 ClientSampled :



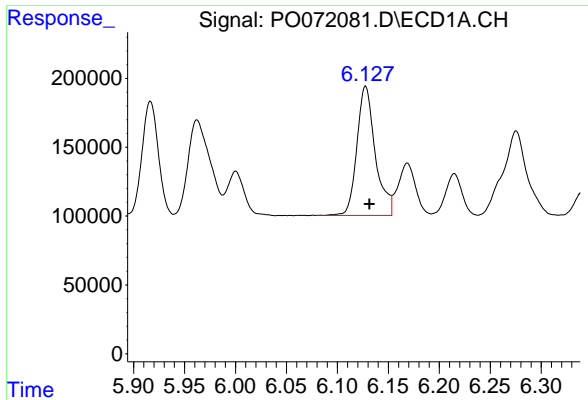
#5 AR-1016-3  
 R.T.: 4.933 min  
 Delta R.T.: -0.004 min  
 Response: 575900  
 Conc: 468.12 ng/ml



#6 AR-1016-4  
 R.T.: 5.819 min  
 Delta R.T.: -0.004 min  
 Response: 1195919  
 Conc: 550.81 ng/ml



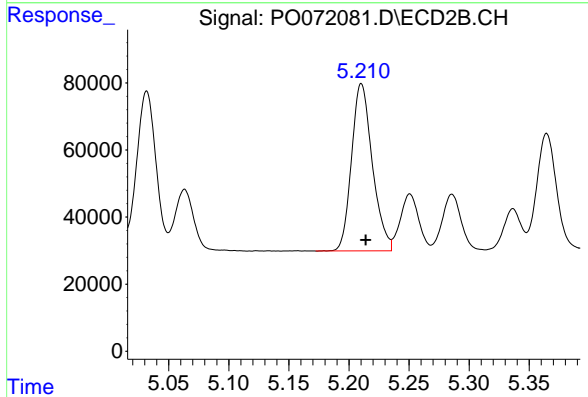
#6 AR-1016-4  
 R.T.: 4.990 min  
 Delta R.T.: -0.004 min  
 Response: 503590  
 Conc: 471.82 ng/ml



#7 AR-1016-5

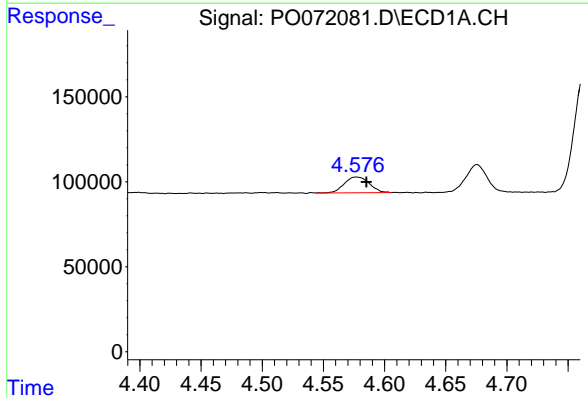
R.T.: 6.128 min  
 Delta R.T.: -0.004 min  
 Response: 1176754  
 Conc: 531.60 ng/ml

Instrument :  
 ECD\_D  
 ClientSampled :



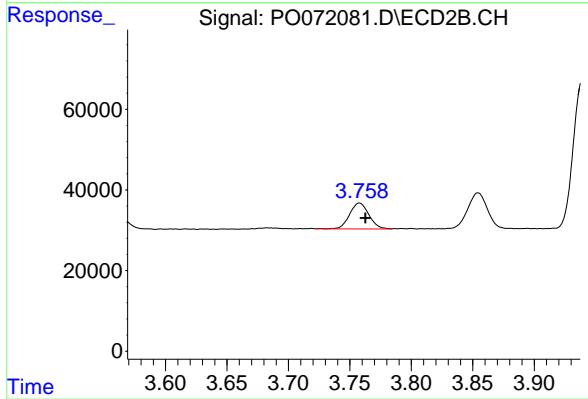
#7 AR-1016-5

R.T.: 5.210 min  
 Delta R.T.: -0.004 min  
 Response: 600470  
 Conc: 473.86 ng/ml



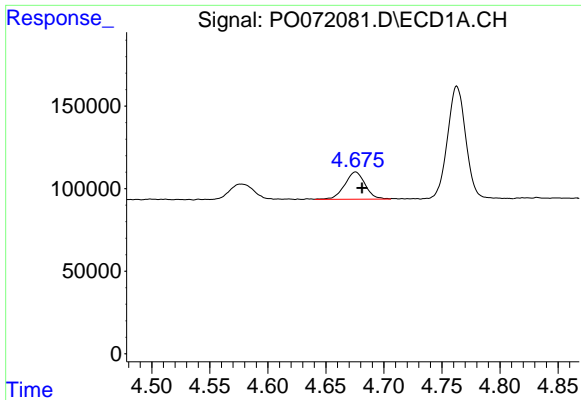
#8 AR-1221-1

R.T.: 4.577 min  
 Delta R.T.: -0.008 min  
 Response: 131325  
 Conc: 178.18 ng/ml



#8 AR-1221-1

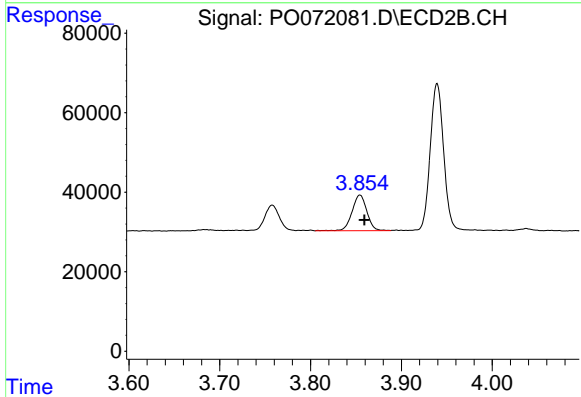
R.T.: 3.758 min  
 Delta R.T.: -0.005 min  
 Response: 70029  
 Conc: 161.70 ng/ml



#9 AR-1221-2

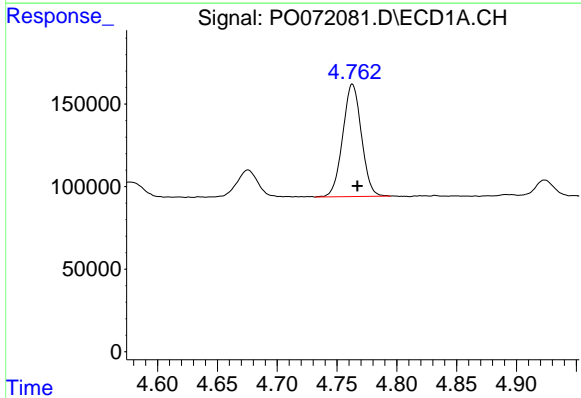
R.T.: 4.676 min  
 Delta R.T.: -0.006 min  
 Response: 203331  
 Conc: 368.11 ng/ml

Instrument :  
 ECD\_D  
 ClientSampled :



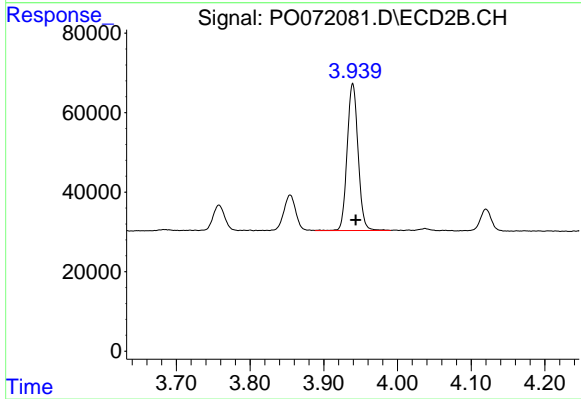
#9 AR-1221-2

R.T.: 3.854 min  
 Delta R.T.: -0.005 min  
 Response: 101523  
 Conc: 314.32 ng/ml



#10 AR-1221-3

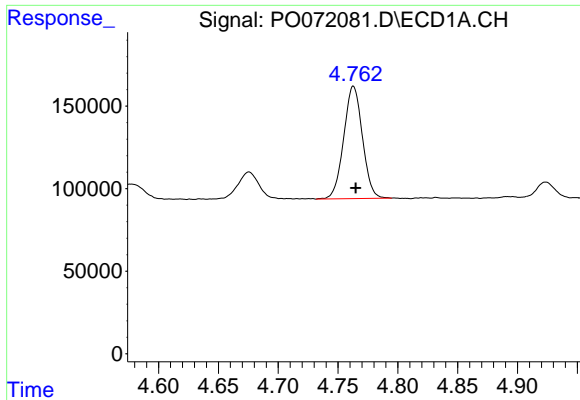
R.T.: 4.763 min  
 Delta R.T.: -0.004 min  
 Response: 741505  
 Conc: 410.33 ng/ml



#10 AR-1221-3

R.T.: 3.939 min  
 Delta R.T.: -0.004 min  
 Response: 380310  
 Conc: 383.19 ng/ml

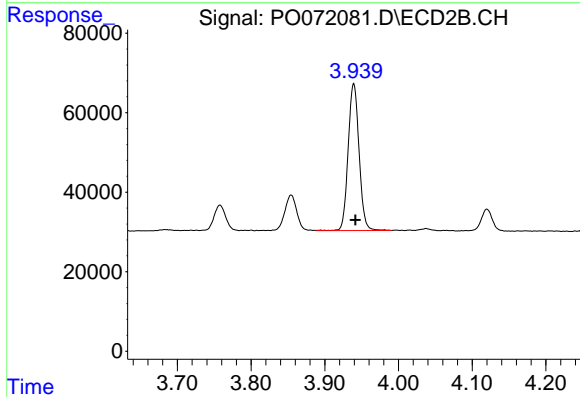




#11 AR-1232-1

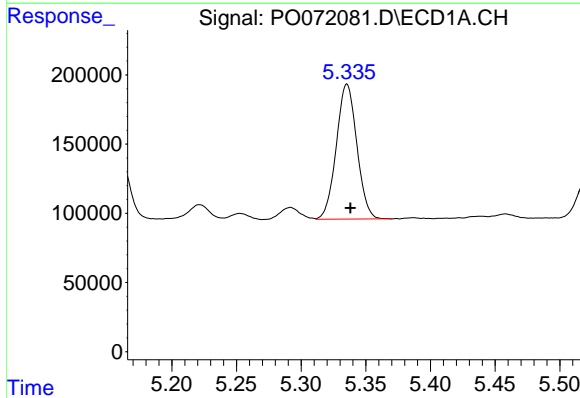
R.T.: 4.763 min  
 Delta R.T.: -0.002 min  
 Response: 741505  
 Conc: 489.89 ng/ml

Instrument :  
 ECD\_D  
 ClientSampled :



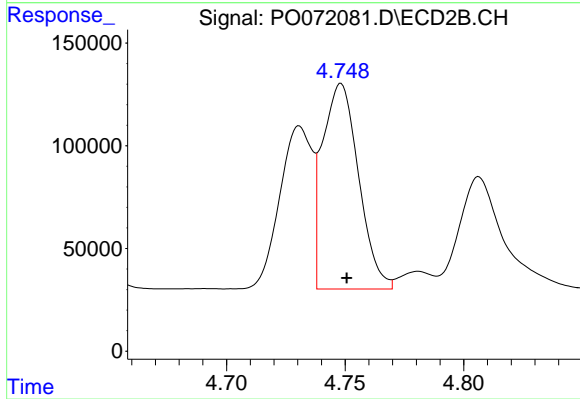
#11 AR-1232-1

R.T.: 3.939 min  
 Delta R.T.: -0.002 min  
 Response: 380310  
 Conc: 446.79 ng/ml



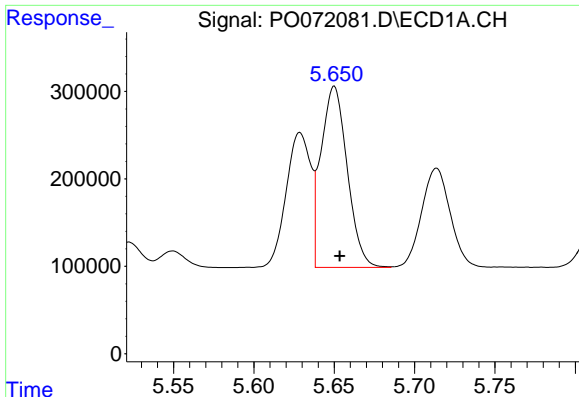
#12 AR-1232-2

R.T.: 5.335 min  
 Delta R.T.: -0.003 min  
 Response: 1079060  
 Conc: 1360.46 ng/ml



#12 AR-1232-2

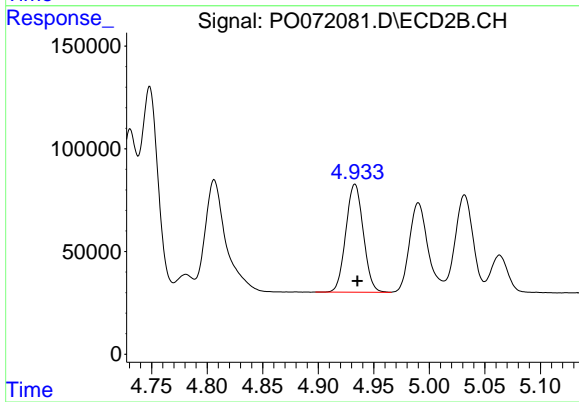
R.T.: 4.748 min  
 Delta R.T.: -0.002 min  
 Response: 1060091  
 Conc: 1127.28 ng/ml



#13 AR-1232-3

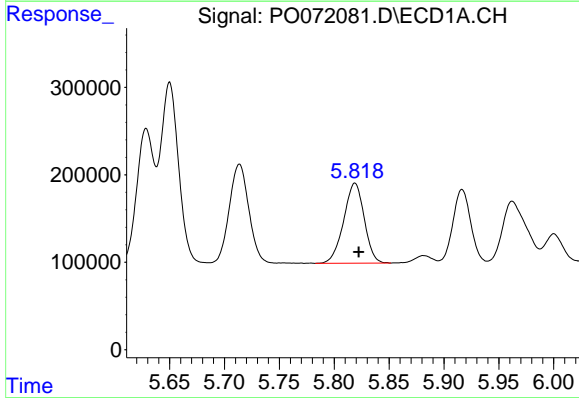
R.T.: 5.650 min  
 Delta R.T.: -0.003 min  
 Response: 2354939  
 Conc: 1367.90 ng/ml

Instrument :  
 ECD\_D  
 ClientSampled :



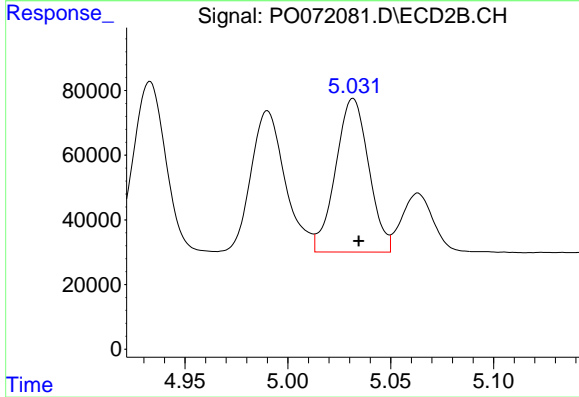
#13 AR-1232-3

R.T.: 4.933 min  
 Delta R.T.: -0.002 min  
 Response: 575900  
 Conc: 1158.24 ng/ml



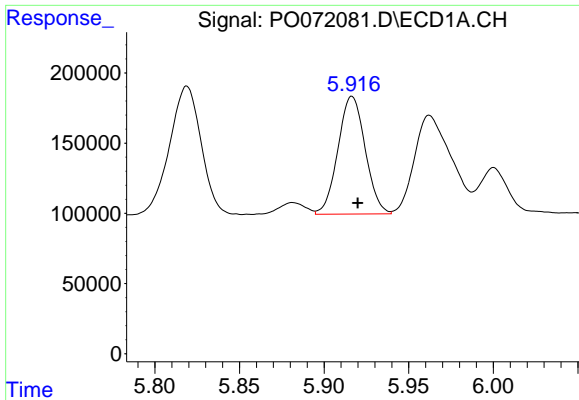
#14 AR-1232-4

R.T.: 5.819 min  
 Delta R.T.: -0.003 min  
 Response: 1195919  
 Conc: 1371.11 ng/ml



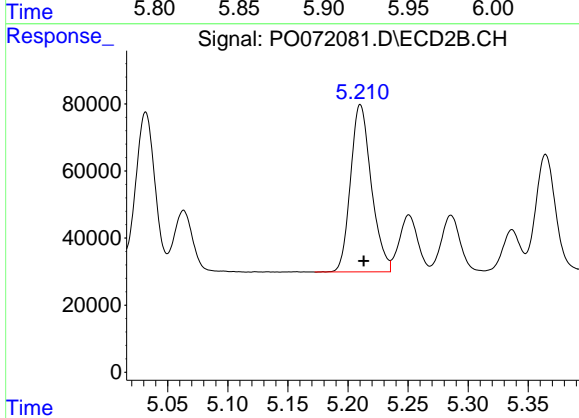
#14 AR-1232-4

R.T.: 5.032 min  
 Delta R.T.: -0.003 min  
 Response: 532706  
 Conc: 1292.11 ng/ml

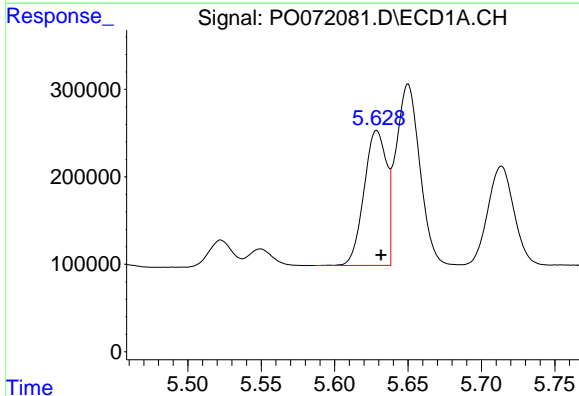


#15 AR-1232-5  
 R.T.: 5.917 min  
 Delta R.T.: -0.003 min  
 Response: 940163  
 Conc: 1719.01 ng/ml

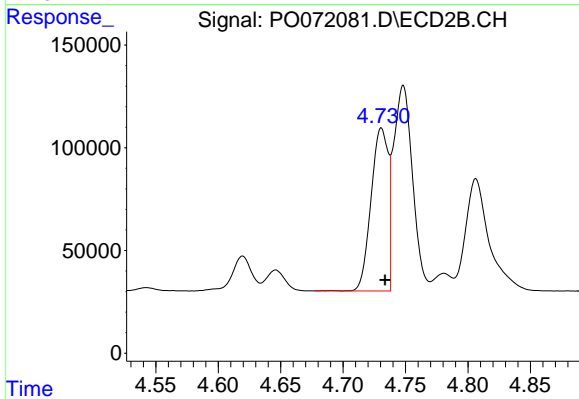
Instrument :  
 ECD\_D  
 ClientSampled :



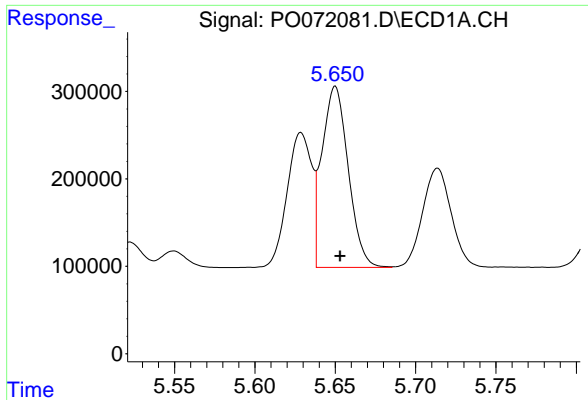
#15 AR-1232-5  
 R.T.: 5.210 min  
 Delta R.T.: -0.003 min  
 Response: 600470  
 Conc: 1237.31 ng/ml



#16 AR-1242-1  
 R.T.: 5.629 min  
 Delta R.T.: -0.003 min  
 Response: 1646971  
 Conc: 755.40 ng/ml



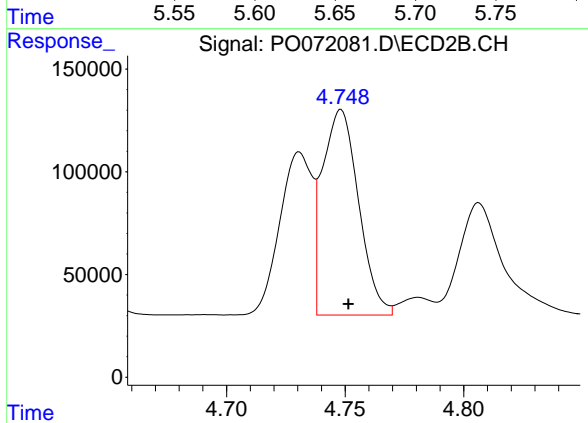
#16 AR-1242-1  
 R.T.: 4.731 min  
 Delta R.T.: -0.003 min  
 Response: 753968  
 Conc: 676.31 ng/ml



#17 AR-1242-2

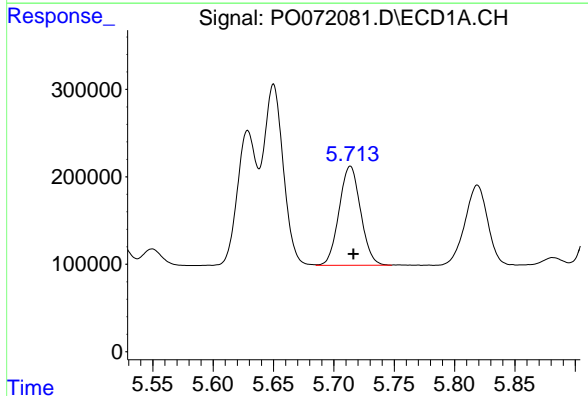
R.T.: 5.650 min  
 Delta R.T.: -0.003 min  
 Response: 2354939  
 Conc: 757.92 ng/ml

Instrument :  
 ECD\_D  
 ClientSampled :



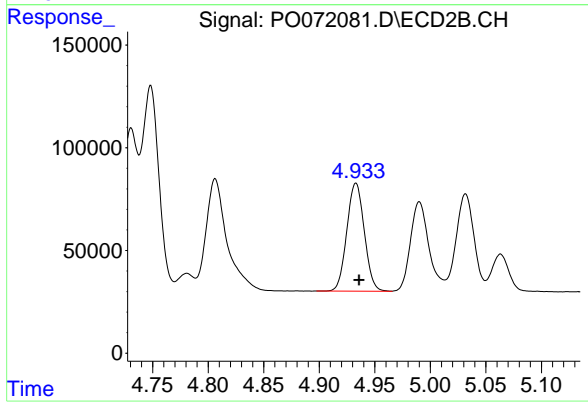
#17 AR-1242-2

R.T.: 4.748 min  
 Delta R.T.: -0.003 min  
 Response: 1060091  
 Conc: 677.80 ng/ml



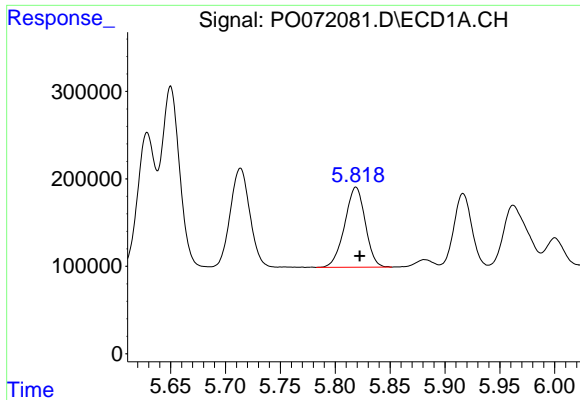
#18 AR-1242-3

R.T.: 5.714 min  
 Delta R.T.: -0.002 min  
 Response: 1402080  
 Conc: 753.09 ng/ml



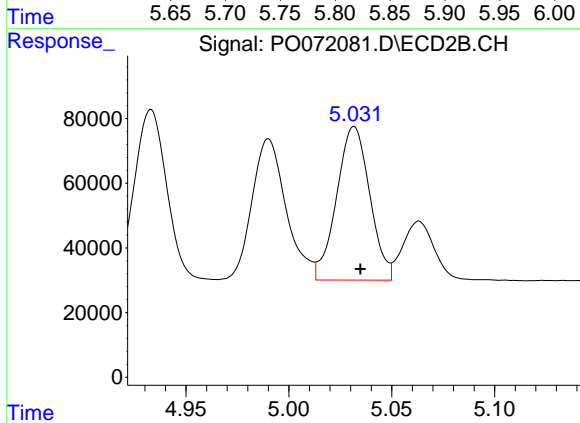
#18 AR-1242-3

R.T.: 4.933 min  
 Delta R.T.: -0.003 min  
 Response: 575900  
 Conc: 659.91 ng/ml

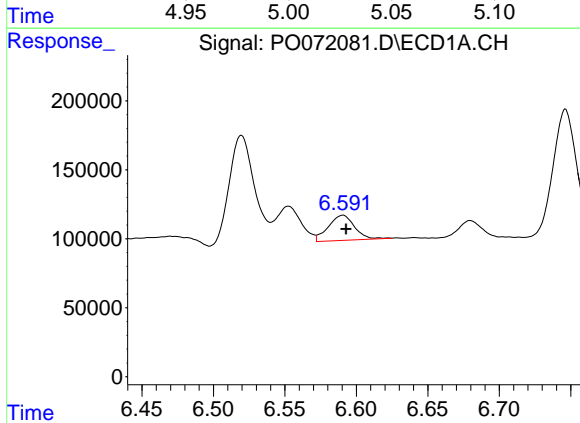


#19 AR-1242-4  
 R.T.: 5.819 min  
 Delta R.T.: -0.003 min  
 Response: 1195919  
 Conc: 772.98 ng/ml

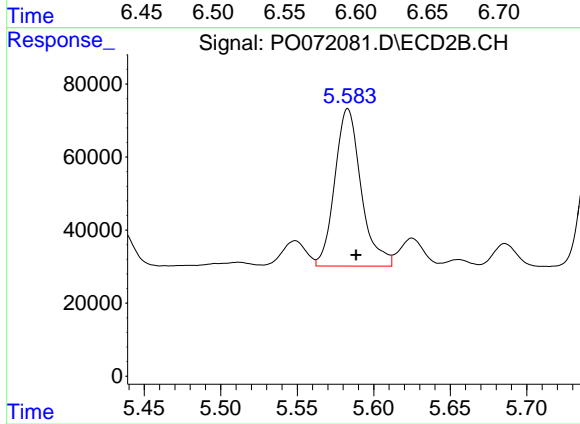
Instrument :  
 ECD\_D  
 ClientSampleId :



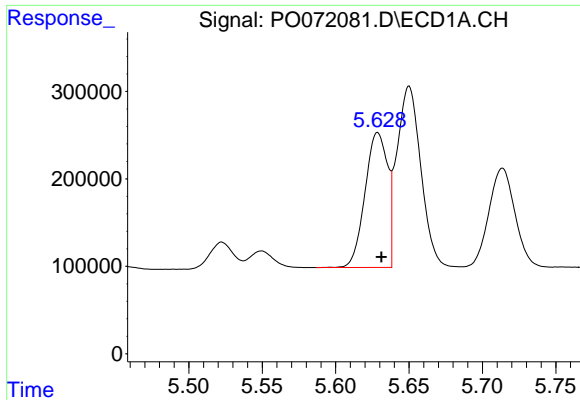
#19 AR-1242-4  
 R.T.: 5.032 min  
 Delta R.T.: -0.003 min  
 Response: 532706  
 Conc: 666.91 ng/ml



#20 AR-1242-5  
 R.T.: 6.591 min  
 Delta R.T.: -0.002 min  
 Response: 234001  
 Conc: 120.88 ng/ml

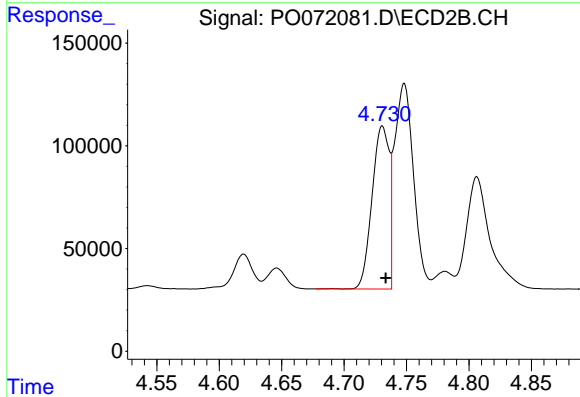


#20 AR-1242-5  
 R.T.: 5.583 min  
 Delta R.T.: -0.005 min  
 Response: 515411  
 Conc: 442.25 ng/ml

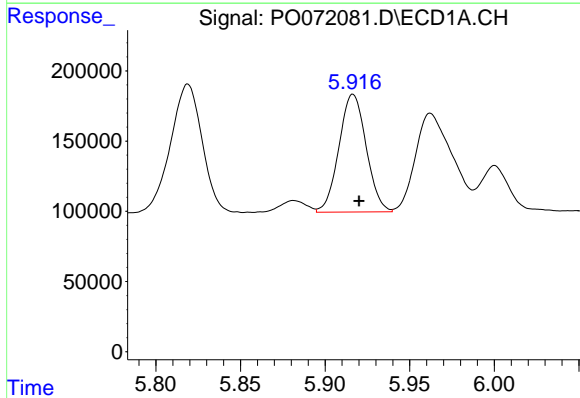


#21 AR-1248-1  
 R.T.: 5.629 min  
 Delta R.T.: -0.003 min  
 Response: 1646971  
 Conc: 1045.78 ng/ml

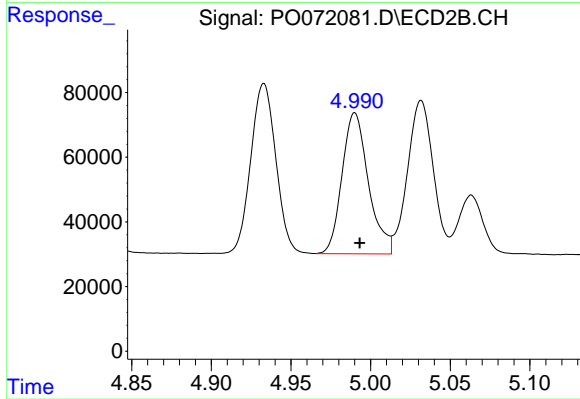
Instrument :  
 ECD\_D  
 ClientSampled :



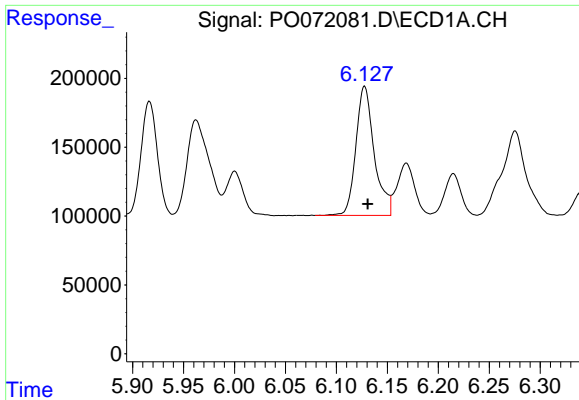
#21 AR-1248-1  
 R.T.: 4.731 min  
 Delta R.T.: -0.003 min  
 Response: 753968  
 Conc: 886.39 ng/ml



#22 AR-1248-2  
 R.T.: 5.917 min  
 Delta R.T.: -0.004 min  
 Response: 940163  
 Conc: 456.84 ng/ml



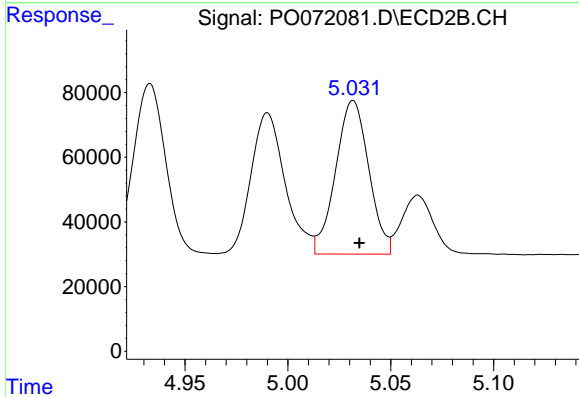
#22 AR-1248-2  
 R.T.: 4.990 min  
 Delta R.T.: -0.003 min  
 Response: 503590  
 Conc: 420.87 ng/ml



#23 AR-1248-3

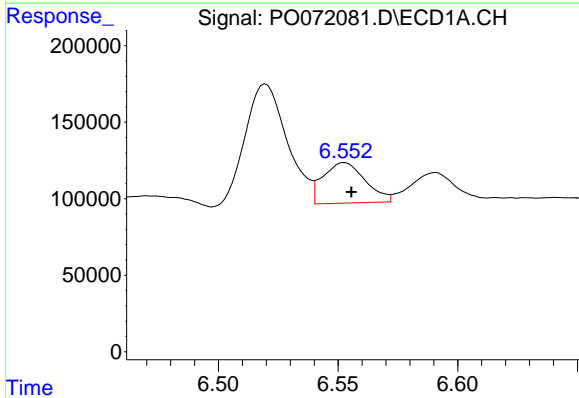
R.T.: 6.128 min  
 Delta R.T.: -0.003 min  
 Response: 1176754  
 Conc: 470.24 ng/ml

Instrument :  
 ECD\_D  
 ClientSampled :



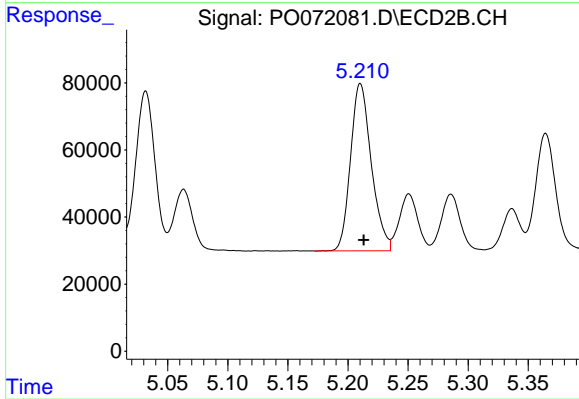
#23 AR-1248-3

R.T.: 5.032 min  
 Delta R.T.: -0.003 min  
 Response: 532706  
 Conc: 469.66 ng/ml



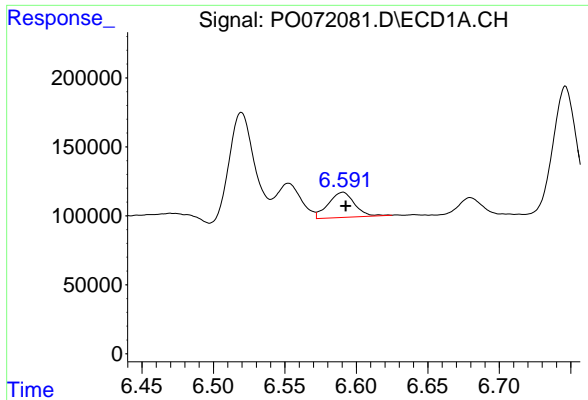
#24 AR-1248-4

R.T.: 6.553 min  
 Delta R.T.: -0.003 min  
 Response: 323855  
 Conc: 95.57 ng/ml



#24 AR-1248-4

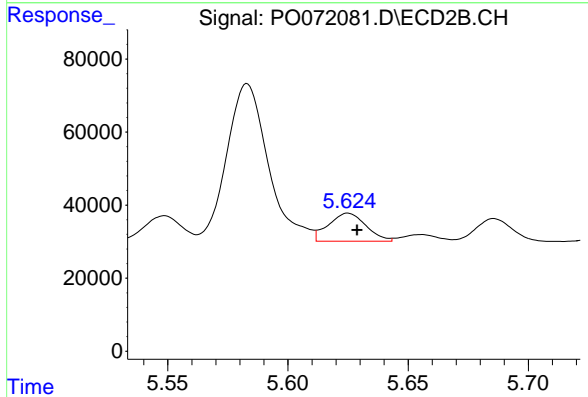
R.T.: 5.210 min  
 Delta R.T.: -0.003 min  
 Response: 600470  
 Conc: 424.50 ng/ml



#25 AR-1248-5

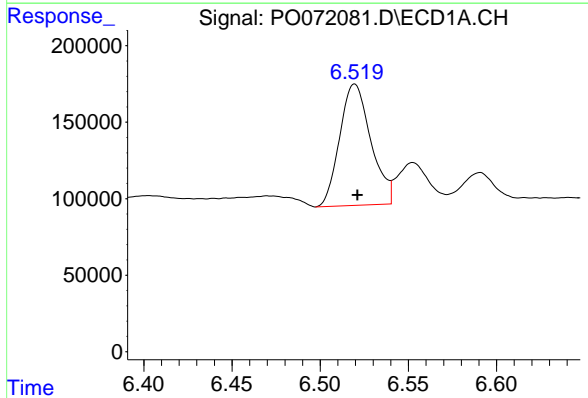
R.T.: 6.591 min  
 Delta R.T.: -0.002 min  
 Response: 234001  
 Conc: 73.64 ng/ml

Instrument :  
 ECD\_D  
 ClientSampled :



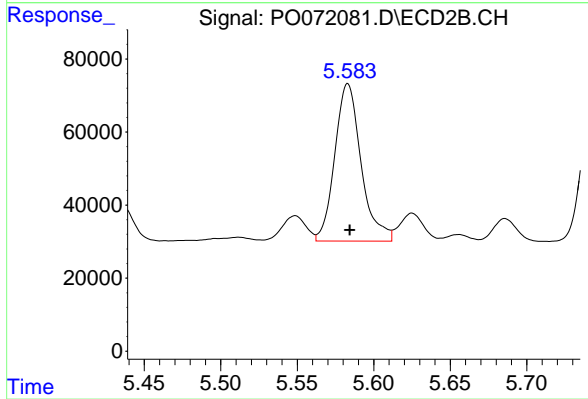
#25 AR-1248-5

R.T.: 5.625 min  
 Delta R.T.: -0.004 min  
 Response: 83320  
 Conc: 53.63 ng/ml



#26 AR-1254-1

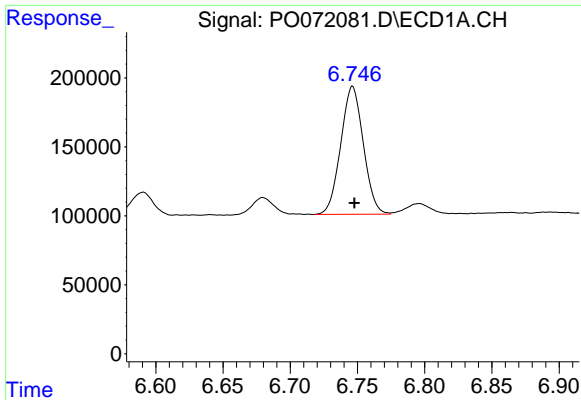
R.T.: 6.520 min  
 Delta R.T.: -0.002 min  
 Response: 976360  
 Conc: 279.46 ng/ml



#26 AR-1254-1

R.T.: 5.583 min  
 Delta R.T.: -0.001 min  
 Response: 515411  
 Conc: 215.67 ng/ml

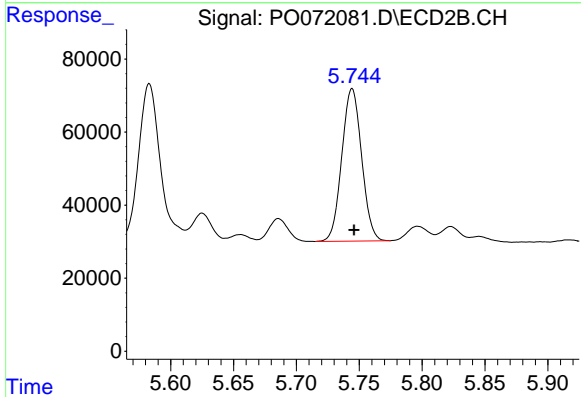




#27 AR-1254-2

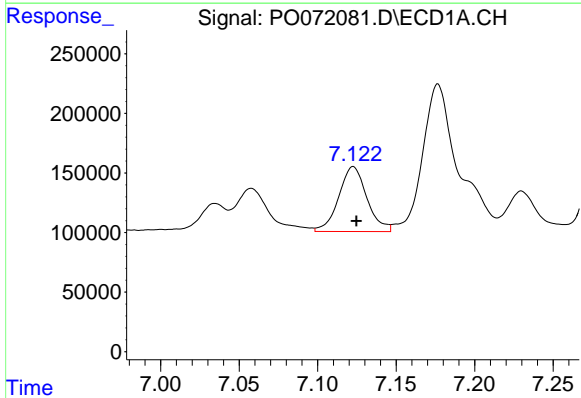
R.T.: 6.746 min  
 Delta R.T.: -0.002 min  
 Response: 1081204  
 Conc: 196.39 ng/ml

Instrument :  
 ECD\_D  
 ClientSampled :



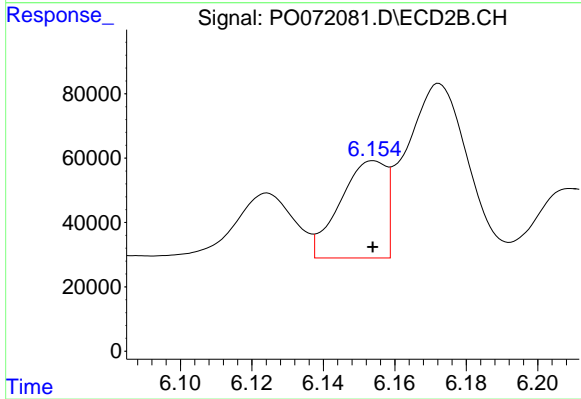
#27 AR-1254-2

R.T.: 5.744 min  
 Delta R.T.: -0.001 min  
 Response: 457658  
 Conc: 213.96 ng/ml



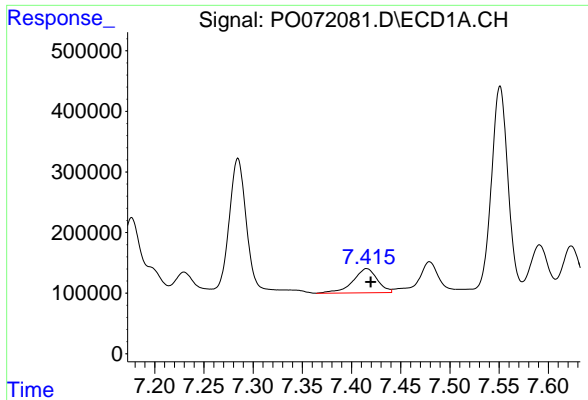
#28 AR-1254-3

R.T.: 7.123 min  
 Delta R.T.: -0.002 min  
 Response: 680448  
 Conc: 117.82 ng/ml



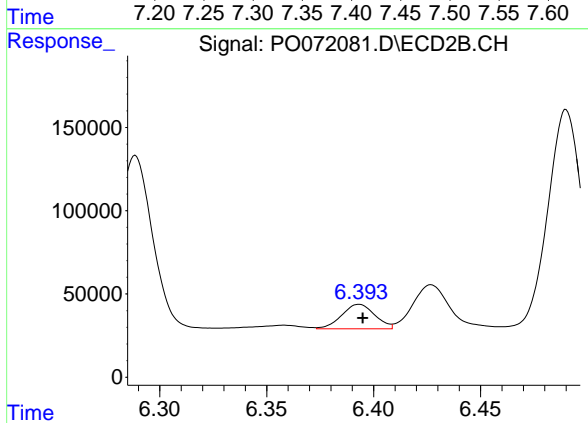
#28 AR-1254-3

R.T.: 6.154 min  
 Delta R.T.: 0.000 min  
 Response: 269757  
 Conc: 79.45 ng/ml

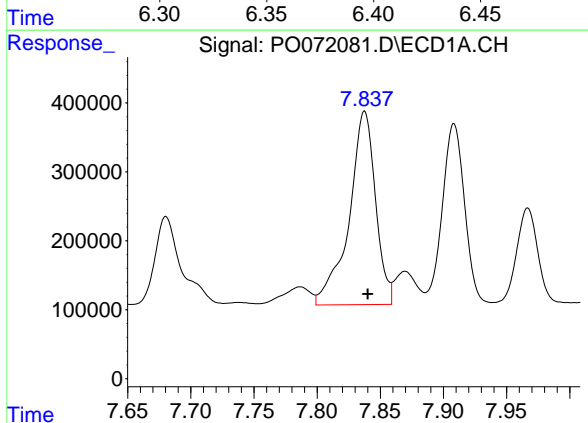


#29 AR-1254-4  
 R.T.: 7.415 min  
 Delta R.T.: -0.004 min  
 Response: 685717  
 Conc: 117.70 ng/ml

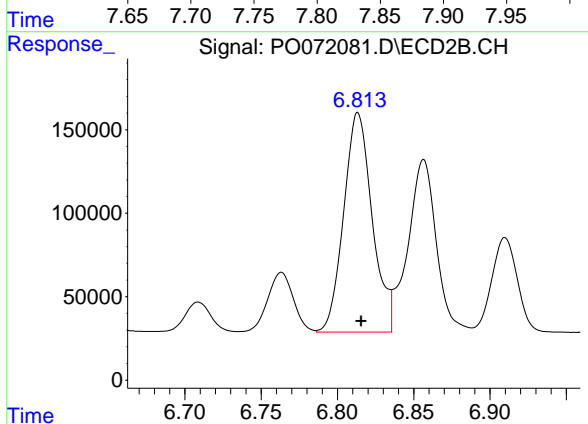
Instrument :  
 ECD\_D  
 ClientSampled :



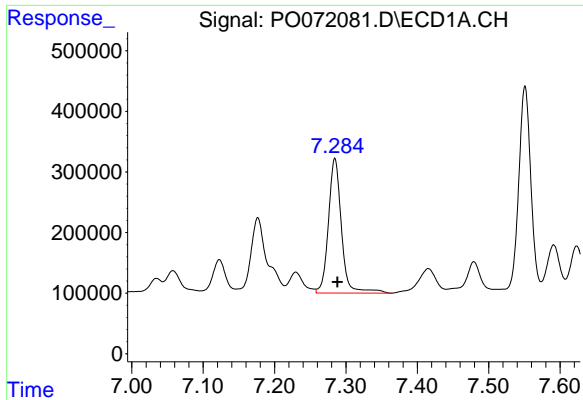
#29 AR-1254-4  
 R.T.: 6.393 min  
 Delta R.T.: -0.002 min  
 Response: 159685  
 Conc: 65.76 ng/ml



#30 AR-1254-5  
 R.T.: 7.838 min  
 Delta R.T.: -0.002 min  
 Response: 4095318  
 Conc: 760.95 ng/ml



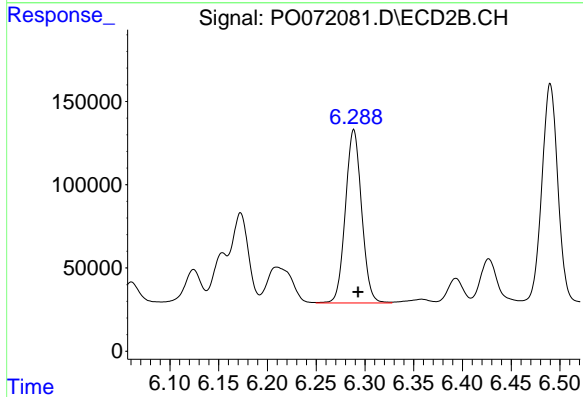
#30 AR-1254-5  
 R.T.: 6.813 min  
 Delta R.T.: -0.002 min  
 Response: 1709810  
 Conc: 522.54 ng/ml



#31 AR-1260-1

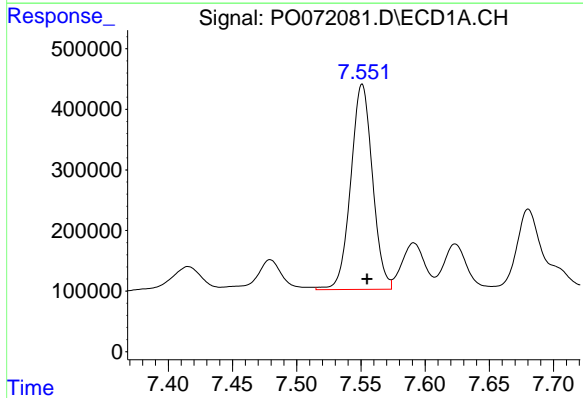
R.T.: 7.285 min  
 Delta R.T.: -0.004 min  
 Response: 2828911  
 Conc: 590.26 ng/ml

Instrument :  
 ECD\_D  
 ClientSampled :



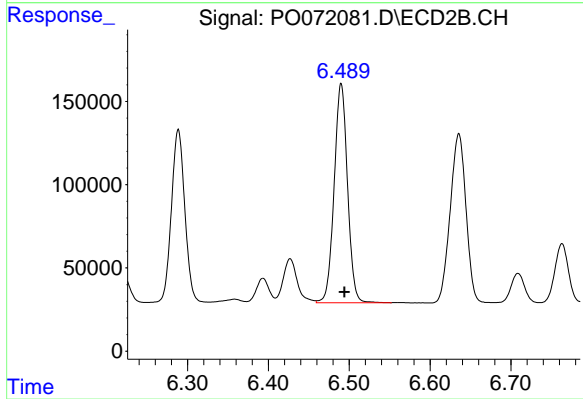
#31 AR-1260-1

R.T.: 6.289 min  
 Delta R.T.: -0.004 min  
 Response: 1204195  
 Conc: 470.31 ng/ml



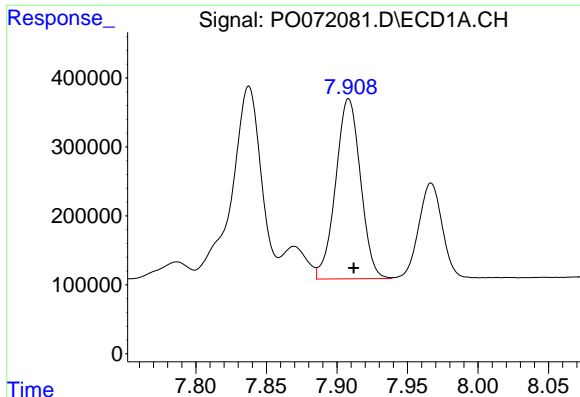
#32 AR-1260-2

R.T.: 7.551 min  
 Delta R.T.: -0.004 min  
 Response: 3984654  
 Conc: 531.98 ng/ml



#32 AR-1260-2

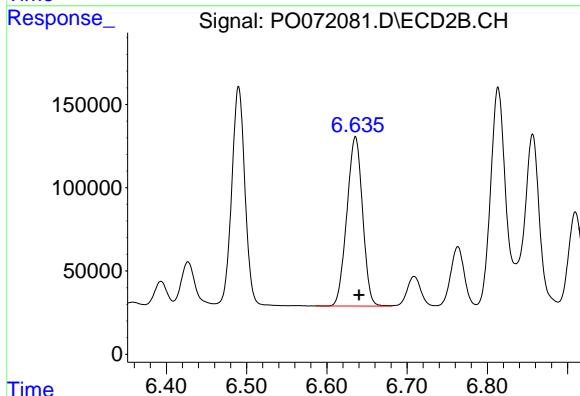
R.T.: 6.490 min  
 Delta R.T.: -0.004 min  
 Response: 1511148  
 Conc: 472.37 ng/ml



#33 AR-1260-3

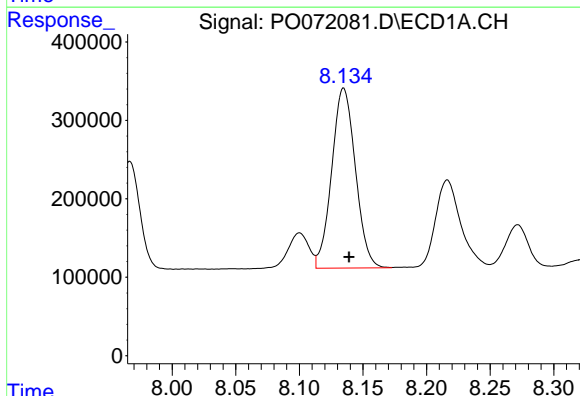
R.T.: 7.908 min  
 Delta R.T.: -0.004 min  
 Response: 3201315  
 Conc: 502.14 ng/ml

Instrument :  
 ECD\_D  
 ClientSampled :



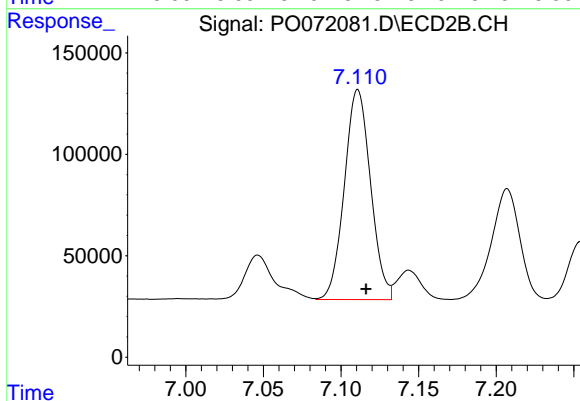
#33 AR-1260-3

R.T.: 6.636 min  
 Delta R.T.: -0.005 min  
 Response: 1380036  
 Conc: 467.62 ng/ml



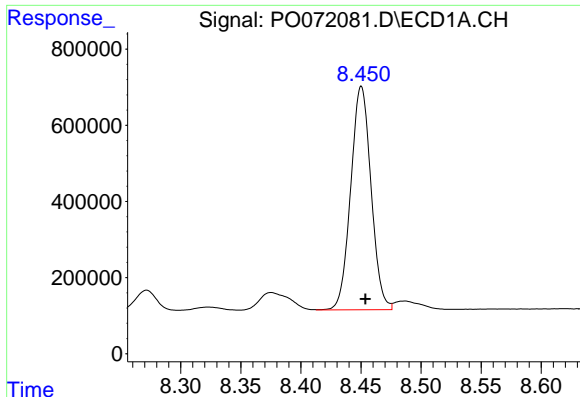
#34 AR-1260-4

R.T.: 8.135 min  
 Delta R.T.: -0.004 min  
 Response: 2975137  
 Conc: 495.65 ng/ml



#34 AR-1260-4

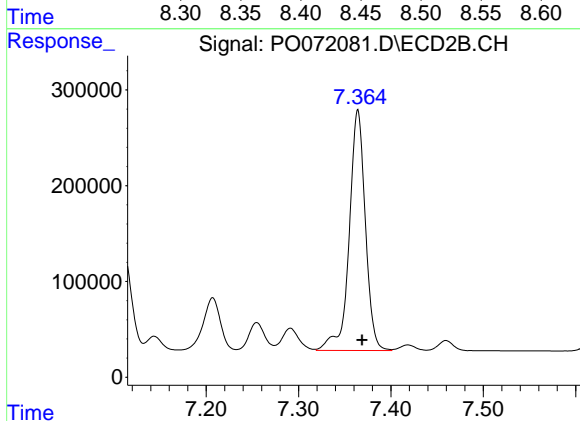
R.T.: 7.111 min  
 Delta R.T.: -0.005 min  
 Response: 1217349  
 Conc: 460.10 ng/ml



#35 AR-1260-5

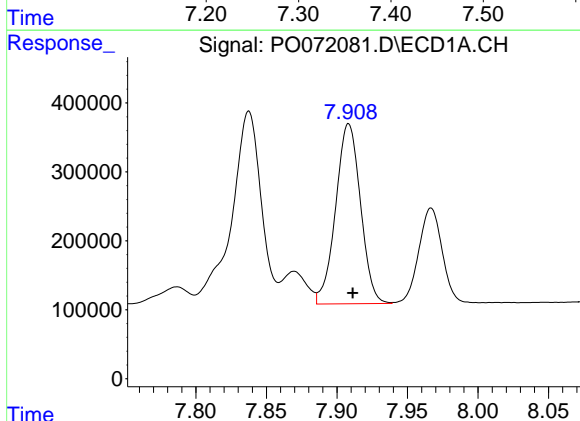
R.T.: 8.450 min  
Delta R.T.: -0.004 min  
Response: 6908270  
Conc: 498.54 ng/ml

Instrument :  
ECD\_D  
ClientSampled :



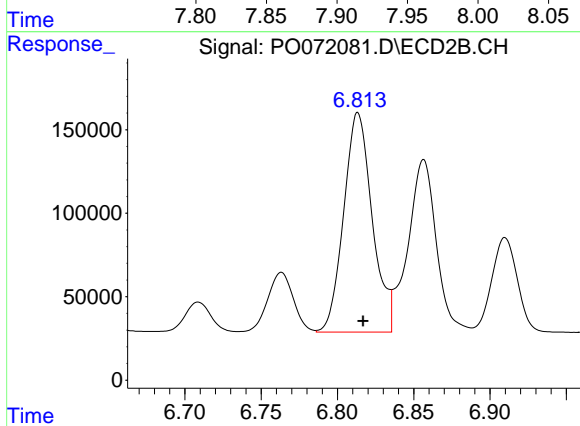
#35 AR-1260-5

R.T.: 7.364 min  
Delta R.T.: -0.004 min  
Response: 3051528  
Conc: 459.30 ng/ml



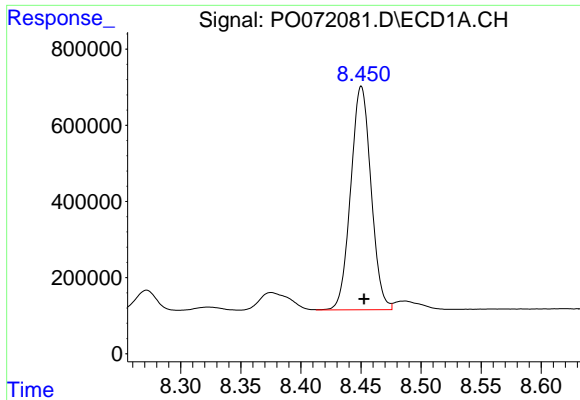
#36 AR-1262-1

R.T.: 7.908 min  
Delta R.T.: -0.003 min  
Response: 3201315  
Conc: 388.49 ng/ml



#36 AR-1262-1

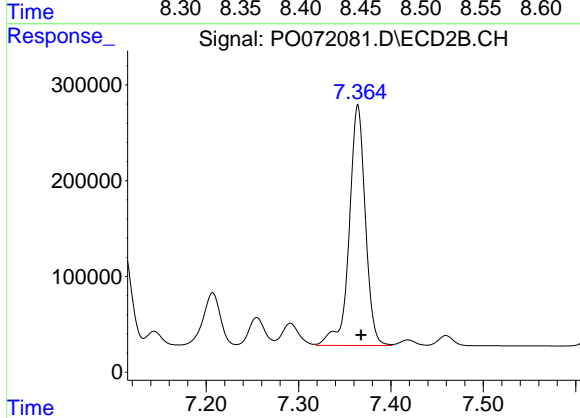
R.T.: 6.813 min  
Delta R.T.: -0.003 min  
Response: 1709810  
Conc: 965.44 ng/ml



#37 AR-1262-2

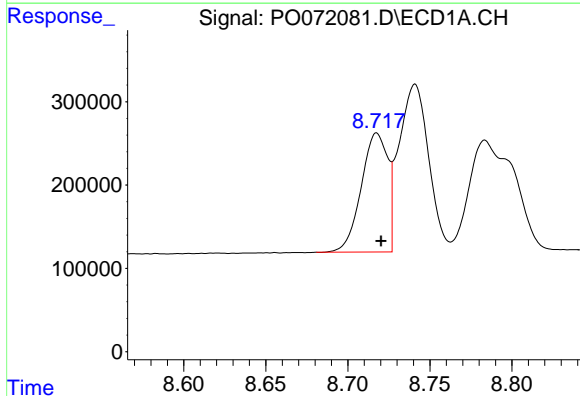
R.T.: 8.450 min  
 Delta R.T.: -0.002 min  
 Response: 6908270  
 Conc: 495.98 ng/ml

Instrument :  
 ECD\_D  
 ClientSampleId :



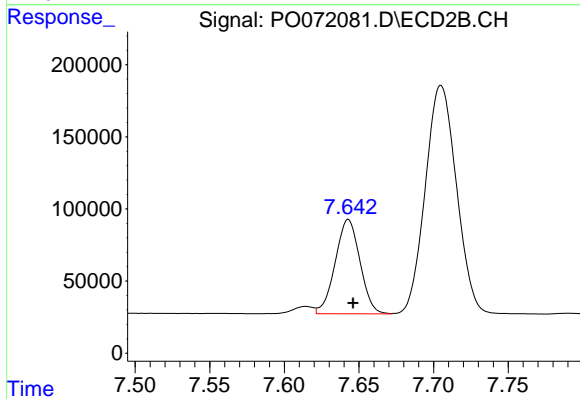
#37 AR-1262-2

R.T.: 7.364 min  
 Delta R.T.: -0.004 min  
 Response: 3051528  
 Conc: 485.22 ng/ml



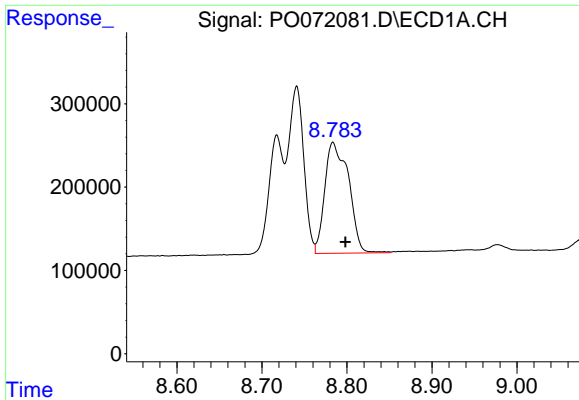
#38 AR-1262-3

R.T.: 8.718 min  
 Delta R.T.: -0.003 min  
 Response: 1605331  
 Conc: 262.27 ng/ml



#38 AR-1262-3

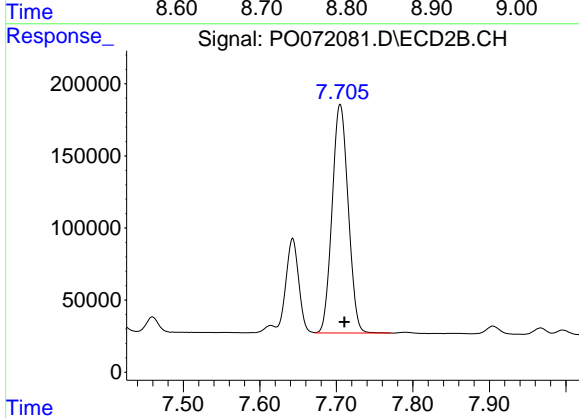
R.T.: 7.643 min  
 Delta R.T.: -0.003 min  
 Response: 754723  
 Conc: 278.20 ng/ml



#39 AR-1262-4

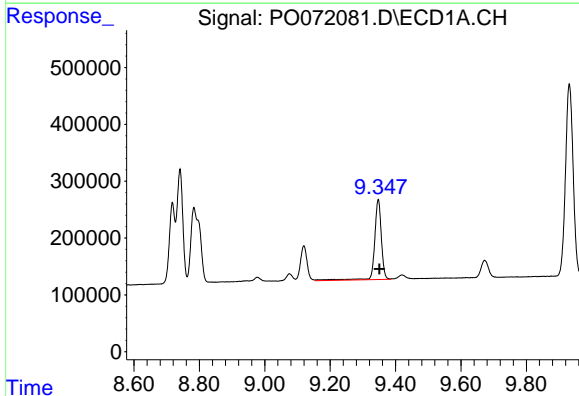
R.T.: 8.784 min  
 Delta R.T.: -0.015 min  
 Response: 2590479  
 Conc: 387.25 ng/ml

Instrument :  
 ECD\_D  
 ClientSampled :



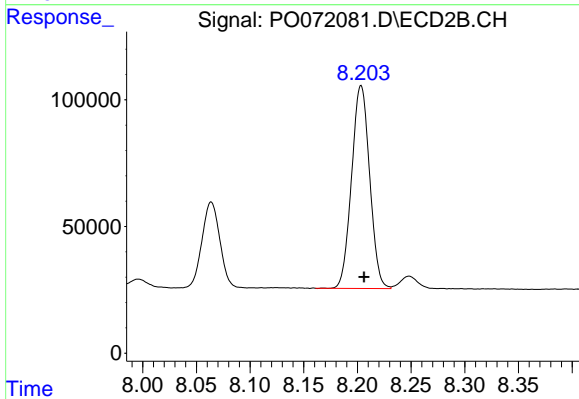
#39 AR-1262-4

R.T.: 7.705 min  
 Delta R.T.: -0.006 min  
 Response: 2304808  
 Conc: 475.78 ng/ml



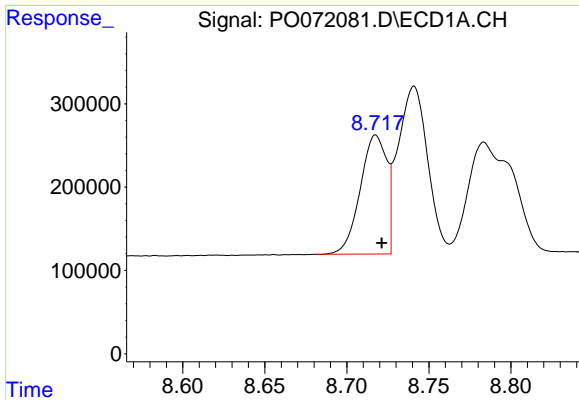
#40 AR-1262-5

R.T.: 9.347 min  
 Delta R.T.: -0.004 min  
 Response: 2027121  
 Conc: 419.08 ng/ml



#40 AR-1262-5

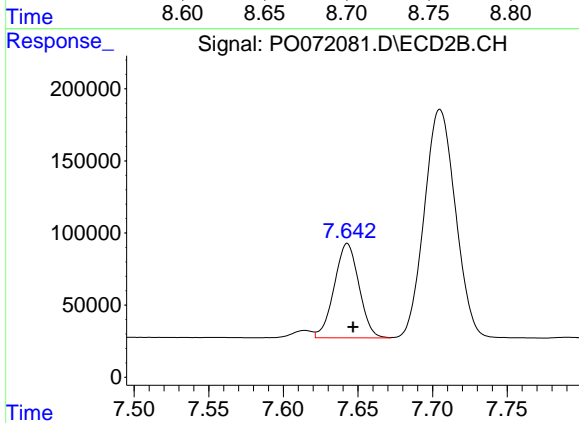
R.T.: 8.203 min  
 Delta R.T.: -0.003 min  
 Response: 938023  
 Conc: 378.68 ng/ml



#41 AR-1268-1

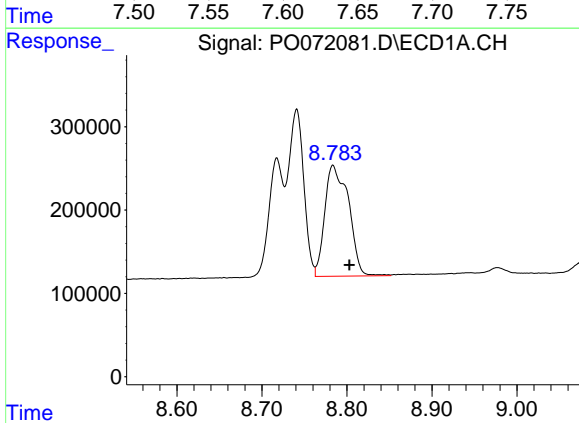
R.T.: 8.718 min  
 Delta R.T.: -0.004 min  
 Response: 1605331  
 Conc: 94.98 ng/ml

Instrument :  
 ECD\_D  
 ClientSampled :



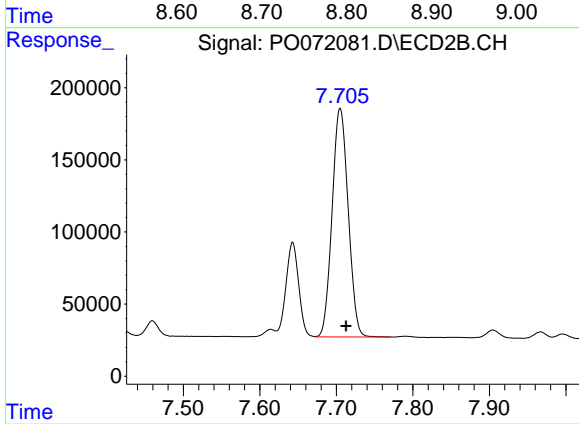
#41 AR-1268-1

R.T.: 7.643 min  
 Delta R.T.: -0.004 min  
 Response: 754723  
 Conc: 98.19 ng/ml



#42 AR-1268-2

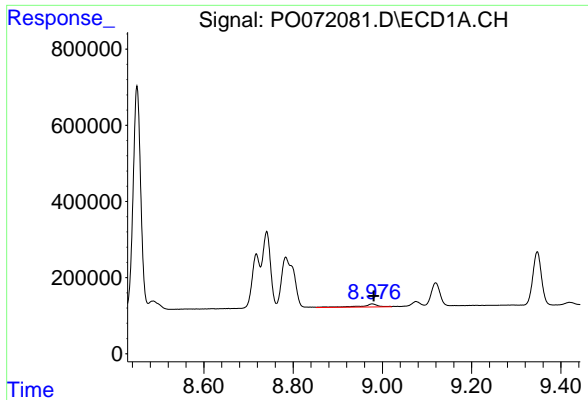
R.T.: 8.784 min  
 Delta R.T.: -0.019 min  
 Response: 2590479  
 Conc: 182.15 ng/ml



#42 AR-1268-2

R.T.: 7.705 min  
 Delta R.T.: -0.008 min  
 Response: 2304808  
 Conc: 330.11 ng/ml

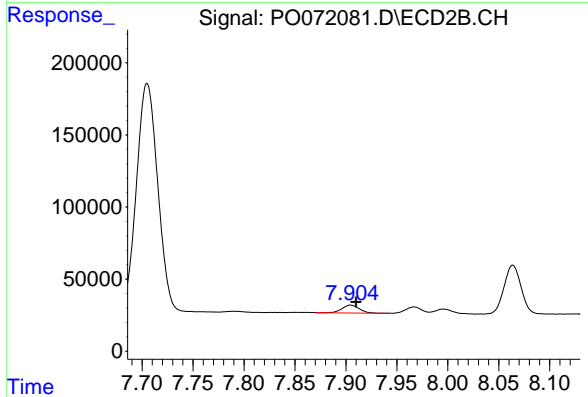




#43 AR-1268-3

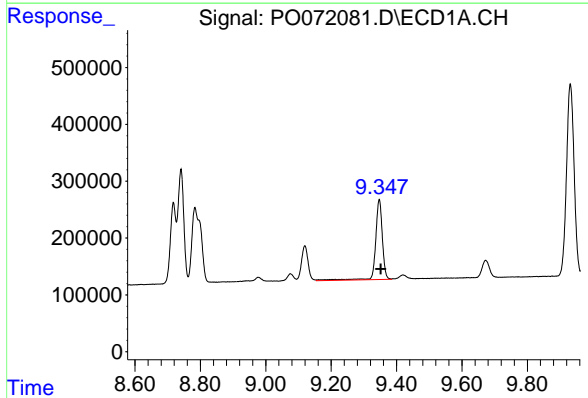
R.T.: 8.977 min  
 Delta R.T.: -0.003 min  
 Response: 227938  
 Conc: 18.54 ng/ml

Instrument :  
 ECD\_D  
 ClientSampleId :



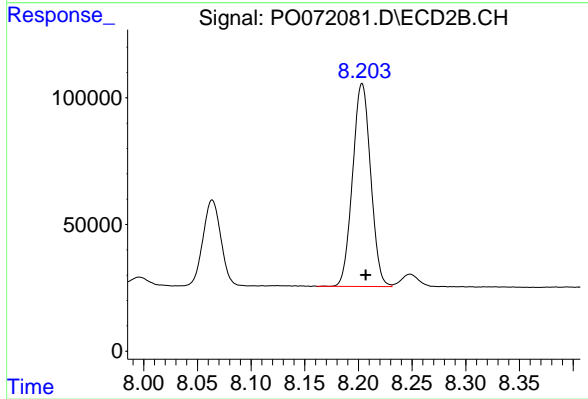
#43 AR-1268-3

R.T.: 7.905 min  
 Delta R.T.: -0.006 min  
 Response: 63594  
 Conc: 10.65 ng/ml



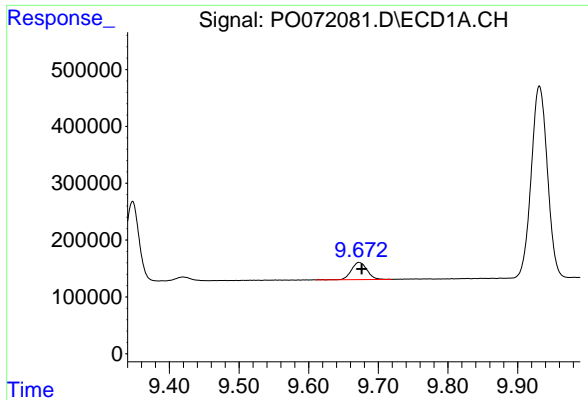
#44 AR-1268-4

R.T.: 9.347 min  
 Delta R.T.: -0.004 min  
 Response: 2027121  
 Conc: 371.15 ng/ml



#44 AR-1268-4

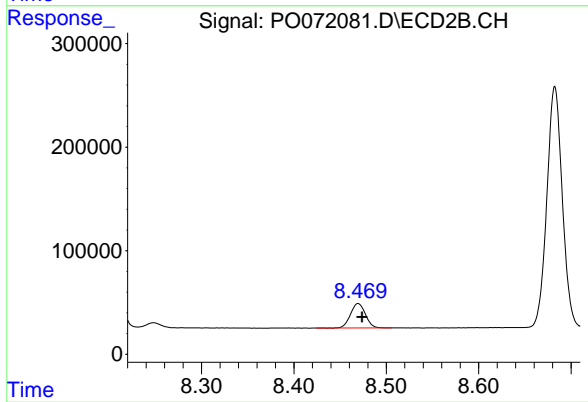
R.T.: 8.203 min  
 Delta R.T.: -0.003 min  
 Response: 938023  
 Conc: 337.64 ng/ml



#45 AR-1268-5

R.T.: 9.672 min  
Delta R.T.: -0.004 min  
Response: 468093  
Conc: 12.77 ng/ml

Instrument :  
ECD\_D  
ClientSampleId :



#45 AR-1268-5

R.T.: 8.470 min  
Delta R.T.: -0.004 min  
Response: 266748  
Conc: 14.10 ng/ml