

Data Path : Z:\pestpcbsrv\HPCHEM1\ECD_D\Data\PD100620\
 Data File : PD059521.D
 Signal(s) : Signal #1: ECD1A.ch Signal #2: ECD2B.ch
 Acq On : 06 Oct 2020 17:07
 Operator : DD\AJ
 Sample : L4259-04
 Misc :
 ALS Vial : 13 Sample Multiplier: 1

Instrument :
 ECD_D
ClientSampled :
 C5CF6

Manual Integrations
APPROVED
 Ankita
 10/7/2020 3:34:20 PM

Integration File signal 1: autoint1.e
 Integration File signal 2: autoint2.e
 Quant Time: Oct 07 02:07:38 2020
 Quant Method : Z:\pestpcbsrv\HPCHEM1\ECD_D\Method\PD100220CLP.M
 Quant Title : GC Extractables
 QLast Update : Fri Oct 02 04:21:20 2020
 Response via : Initial Calibration
 Integrator: ChemStation

Volume Inj. : 1 µl
 Signal #1 Phase : ZB-MR2 Signal #2 Phase: ZB-MR1
 Signal #1 Info : 30M x 0.32mm x0.2 Signal #2 Info : 30M x 0.32mm x 0.50µm

Compound	RT#1	RT#2	Resp#1	Resp#2	ng/ml	ng/ml

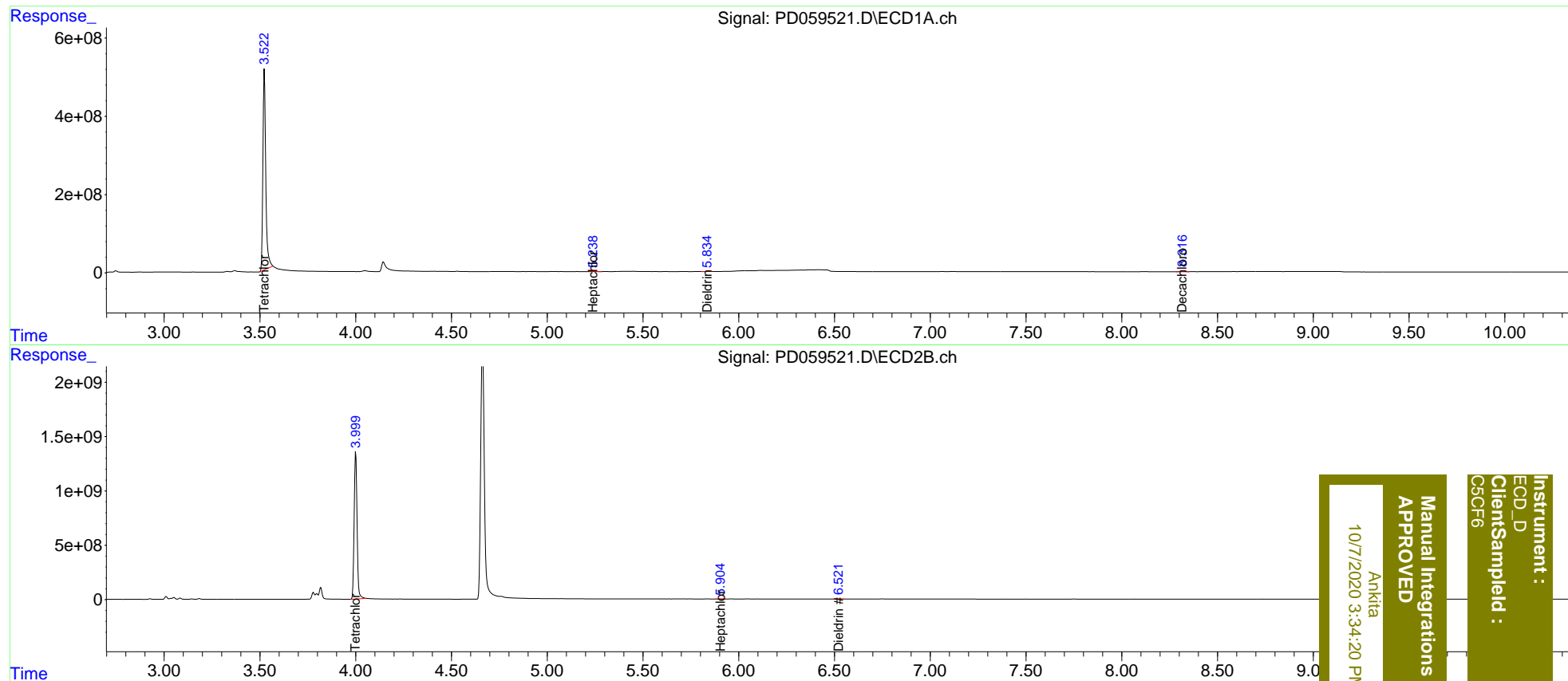
System Monitoring Compounds						
1) SA Tetrachlo...	3.522	3.999f	5292.0E6	14271.6E6	3663.564m	7185.446m#
27) SA Decachlor...	8.317	9.112	38893524	58729995	36.299	39.474
Target Compounds						
8) B Heptachlo...	5.239	5.905	6461282	5860933	3.992	2.611 #
13) MA Dieldrin	5.836	6.521	12635459	16963387	7.704	7.609m

(f)=RT Delta > 1/2 Window (#)=Amounts differ by > 25% (m)=manual int.

Data Path : Z:\pestpcbsrv\HPCHEM1\ECD_D\Data\PD100620\
 Data File : PD059521.D
 Signal(s) : Signal #1: ECD1A.ch Signal #2: ECD2B.ch
 Acq On : 06 Oct 2020 17:07
 Operator : DD\AJ
 Sample : L4259-04
 Misc :
 ALS Vial : 13 Sample Multiplier: 1

Integration File signal 1: autoint1.e
 Integration File signal 2: autoint2.e
 Quant Time: Oct 07 02:07:38 2020
 Quant Method : Z:\pestpcbsrv\HPCHEM1\ECD_D\Method\PD100220CLP.M
 Quant Title : GC Extractables
 QLast Update : Fri Oct 02 04:21:20 2020
 Response via : Initial Calibration
 Integrator: ChemStation

Volume Inj. : 1 µl
 Signal #1 Phase : ZB-MR2 Signal #2 Phase: ZB-MR1
 Signal #1 Info : 30M x 0.32mm x0.2 Signal #2 Info : 30M x 0.32mm x 0.50µm



Instrument : ECD_D
 Client Sample Id : C5CF6
 Manual Integrations APPROVED
 Ankitia
 10/7/2020 3:34:20 PM