

Data Path : Z:\pestpcbsrv\HPCHEM1\ECD_D\Data\PD100622\
 Data File : PD072248.D
 Signal(s) : Signal #1: ECD1A.ch Signal #2: ECD2B.ch
 Acq On : 06 Oct 2022 16:41
 Operator : AR\AJ
 Sample : N5020-01
 Misc :
 ALS Vial : 14 Sample Multiplier: 1

Instrument :
 ECD_D
 ClientSampleId :
 TR-5-100522

Integration File signal 1: autoint1.e
 Integration File signal 2: autoint2.e
 Quant Time: Oct 07 00:31:53 2022
 Quant Method : Z:\pestpcbsrv\HPCHEM1\ECD_D\Method\PD100522.M
 Quant Title : GC Extractables
 QLast Update : Wed Oct 05 15:15:26 2022
 Response via : Initial Calibration
 Integrator: ChemStation

Volume Inj. : 2 µl
 Signal #1 Phase : ZB-MR2 Signal #2 Phase: ZB-MR1
 Signal #1 Info : 30M x 0.32mm x0.2 Signal #2 Info : 30M x 0.32mm x 0.50µm

Compound	RT#1	RT#2	Resp#1	Resp#2	ng/ml	ng/ml

System Monitoring Compounds						
1) SA Tetrachlo...	2.745	3.498	49481815	717.7E6	19.717	19.799
28) SA Decachlor...	7.921	8.985	38571243	194.9E6	15.131	19.404 #
Target Compounds						
10) B gamma-Chl...	4.962	5.893	5788818	55735833	1.765m	3.007m#
11) B alpha-Chl...	5.028	5.971	5799185	48898847	1.807	2.724m#
12) B 4,4'-DDE	5.220	6.143	2095473	26696639	0.689	1.501m#
13) MA Dieldrin	5.352	6.302	3236880	11893187	1.027	0.683m#

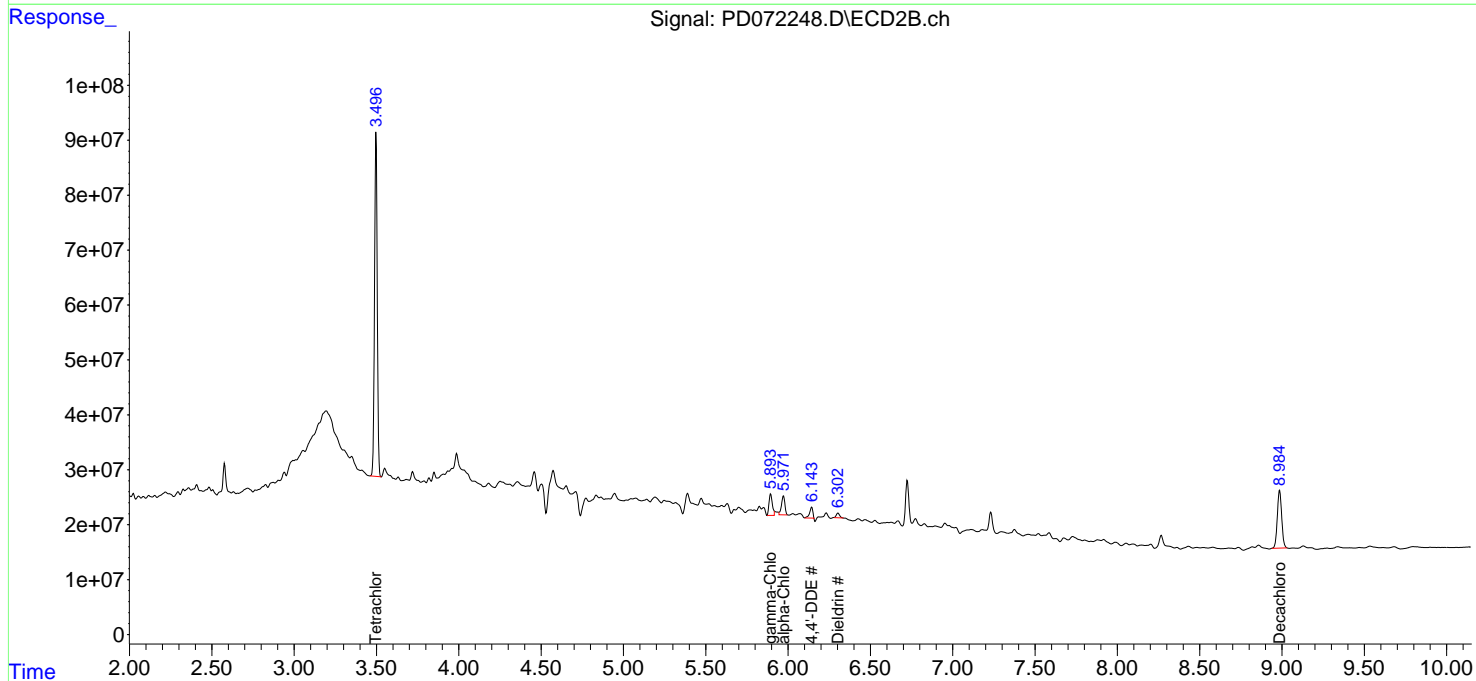
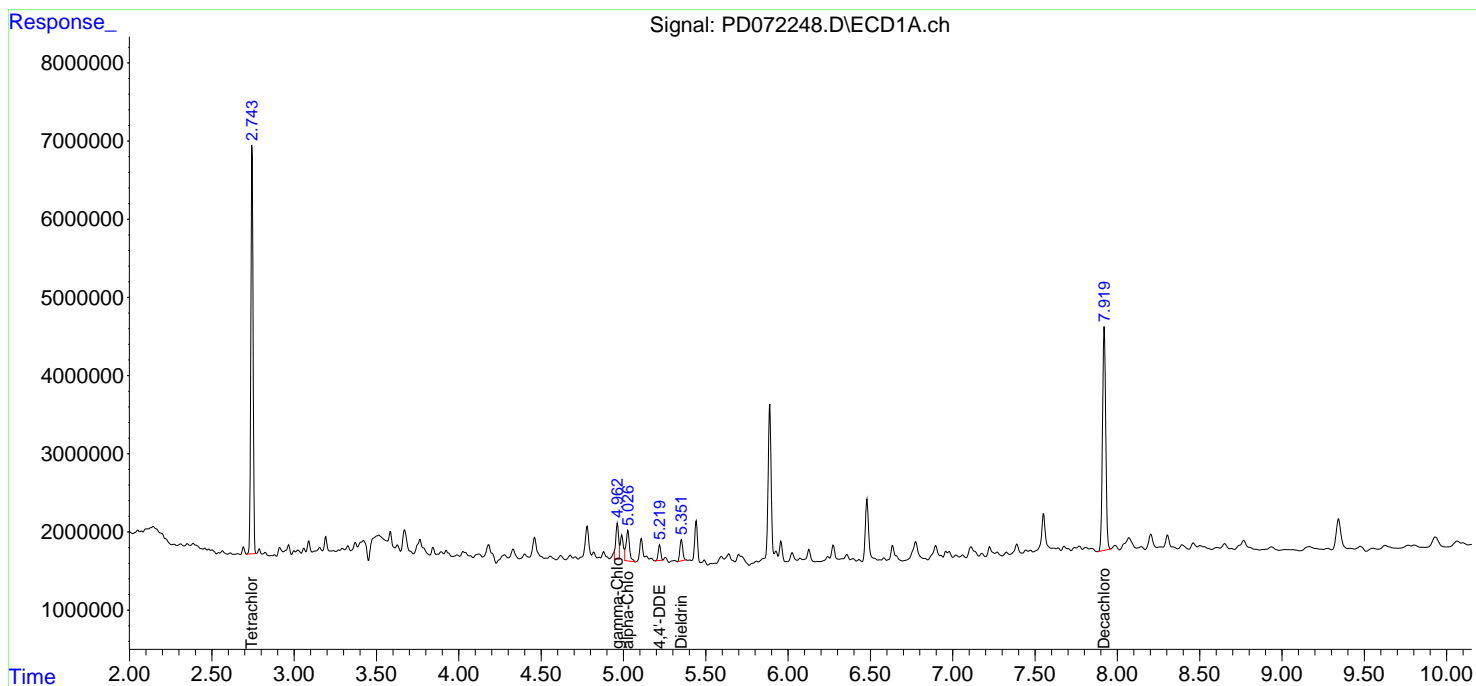
(f)=RT Delta > 1/2 Window (#)=Amounts differ by > 25% (m)=manual int.

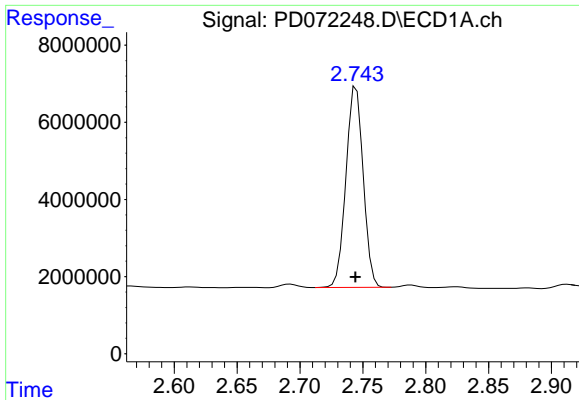
Data Path : Z:\pestpcbsrv\HPCHEM1\ECD_D\Data\PD100622\
 Data File : PD072248.D
 Signal(s) : Signal #1: ECD1A.ch Signal #2: ECD2B.ch
 Acq On : 06 Oct 2022 16:41
 Operator : AR\AJ
 Sample : N5020-01
 Misc :
 ALS Vial : 14 Sample Multiplier: 1

Instrument :
 ECD_D
 ClientSampleId :
 TR-5-100522

Integration File signal 1: autoint1.e
 Integration File signal 2: autoint2.e
 Quant Time: Oct 07 00:31:53 2022
 Quant Method : Z:\pestpcbsrv\HPCHEM1\ECD_D\Method\PD100522.M
 Quant Title : GC Extractables
 QLast Update : Wed Oct 05 15:15:26 2022
 Response via : Initial Calibration
 Integrator: ChemStation

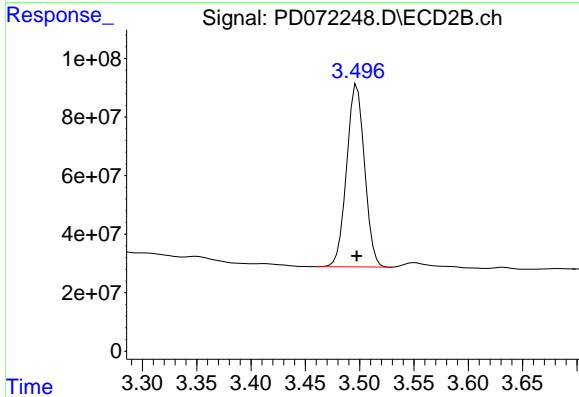
Volume Inj. : 2 µl
 Signal #1 Phase : ZB-MR2 Signal #2 Phase: ZB-MR1
 Signal #1 Info : 30M x 0.32mm x0.2 Signal #2 Info : 30M x 0.32mm x 0.50µm



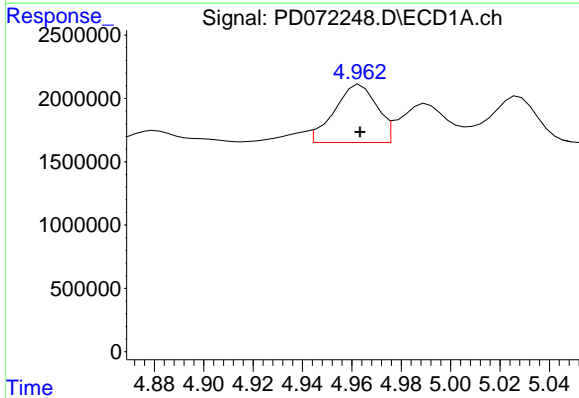


#1 Tetrachloro-m-xylene
 R.T.: 2.745 min
 Delta R.T.: 0.000 min
 Response: 49481815
 Conc: 19.72 ng/ml

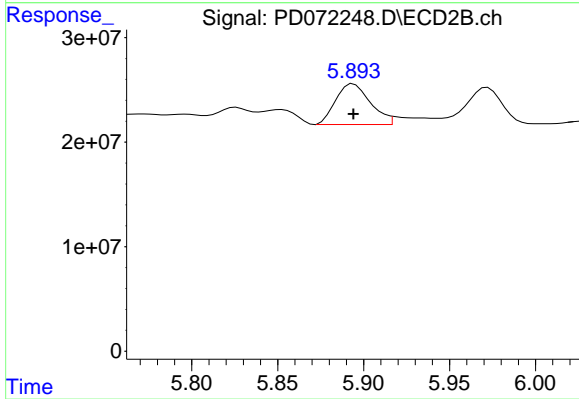
Instrument :
 ECD_D
 ClientSampleId :
 TR-5-100522



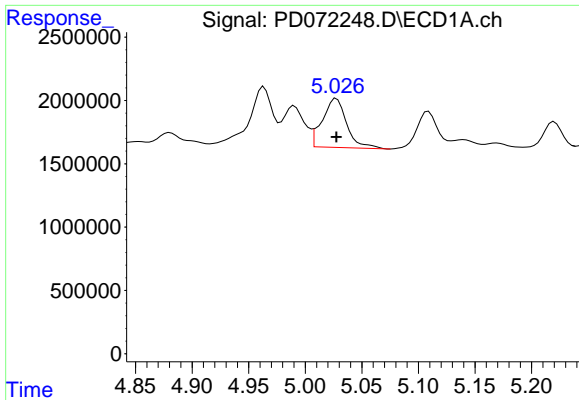
#1 Tetrachloro-m-xylene
 R.T.: 3.498 min
 Delta R.T.: 0.000 min
 Response: 717747623
 Conc: 19.80 ng/ml



#10 gamma-Chlordane
 R.T.: 4.962 min
 Delta R.T.: -0.001 min
 Response: 5788818
 Conc: 1.77 ng/ml m



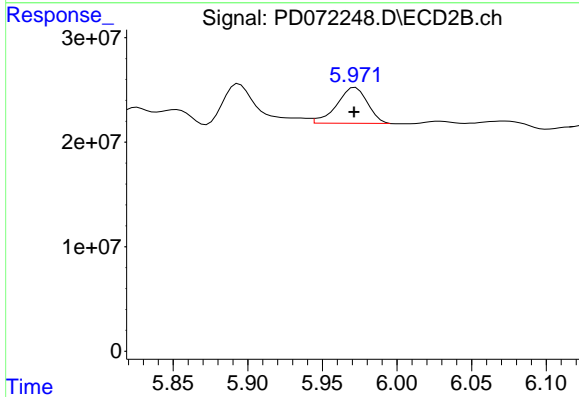
#10 gamma-Chlordane
 R.T.: 5.893 min
 Delta R.T.: -0.001 min
 Response: 55735833
 Conc: 3.01 ng/ml m



#11 alpha-Chlordane

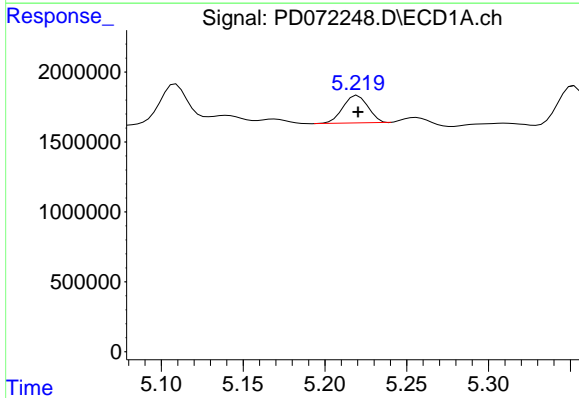
R.T.: 5.028 min
 Delta R.T.: 0.000 min
 Response: 5799185
 Conc: 1.81 ng/ml

Instrument :
 ECD_D
 ClientSampleId :
 TR-5-100522



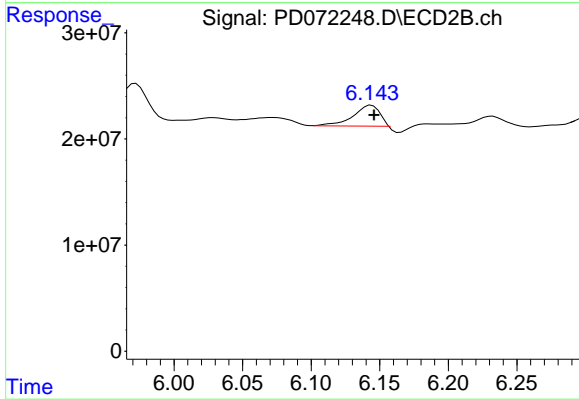
#11 alpha-Chlordane

R.T.: 5.971 min
 Delta R.T.: 0.000 min
 Response: 48898847
 Conc: 2.72 ng/ml m



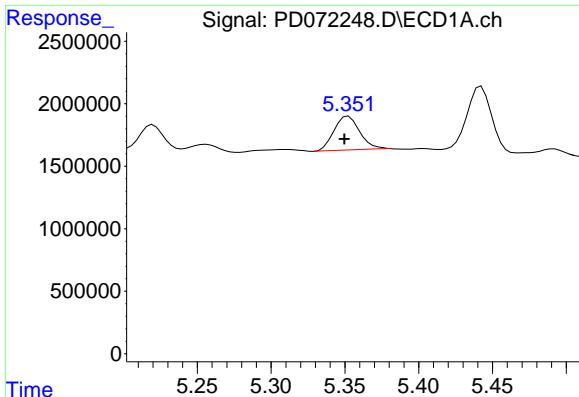
#12 4,4'-DDE

R.T.: 5.220 min
 Delta R.T.: 0.000 min
 Response: 2095473
 Conc: 0.69 ng/ml



#12 4,4'-DDE

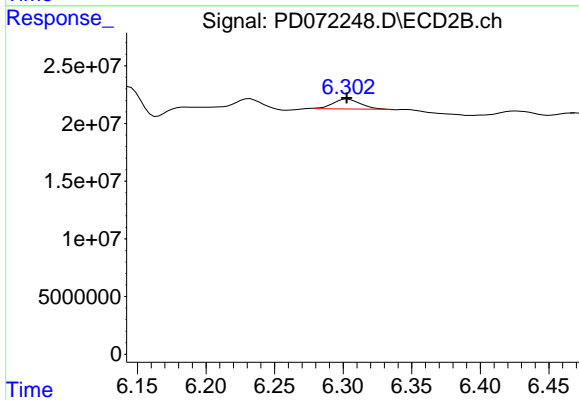
R.T.: 6.143 min
 Delta R.T.: -0.003 min
 Response: 26696639
 Conc: 1.50 ng/ml m



#13 Dieldrin

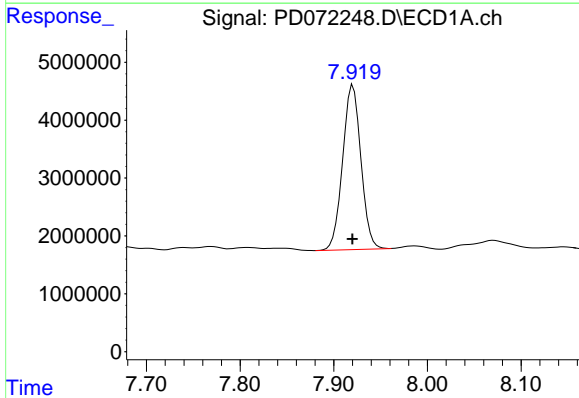
R.T.: 5.352 min
 Delta R.T.: 0.003 min
 Response: 3236880
 Conc: 1.03 ng/ml

Instrument :
 ECD_D
 ClientSampleId :
 TR-5-100522



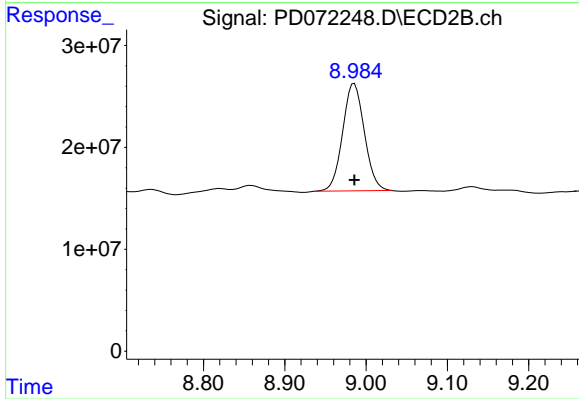
#13 Dieldrin

R.T.: 6.302 min
 Delta R.T.: 0.000 min
 Response: 11893187
 Conc: 0.68 ng/ml m



#28 Decachlorobiphenyl

R.T.: 7.921 min
 Delta R.T.: 0.000 min
 Response: 38571243
 Conc: 15.13 ng/ml



#28 Decachlorobiphenyl

R.T.: 8.985 min
 Delta R.T.: 0.000 min
 Response: 194947558
 Conc: 19.40 ng/ml