

Data Path : Z:\pestpcbsrv\HPCHEM1\ECD_D\Data\PD100719\
 Data File : PD055191.D
 Signal(s) : Signal #1: ECD1A.ch Signal #2: ECD2B.ch
 Acq On : 07 Oct 2019 14:59
 Operator : SG\AJ
 Sample : INDB318
 Misc :
 ALS Vial : 6 Sample Multiplier: 1

Instrument :
 ECD_D
 ClientSampleId :
 INDB318

Integration File signal 1: autoint1.e
 Integration File signal 2: autoint2.e
 Quant Time: Oct 08 09:13:43 2019
 Quant Method : Z:\pestpcbsrv\HPCHEM1\ECD_D\Method\PD092319CLP.M
 Quant Title : GC Extractables
 QLast Update : Tue Sep 24 07:21:19 2019
 Response via : Initial Calibration
 Integrator: ChemStation

Volume Inj. : 1 µl
 Signal #1 Phase : ZB-MR2 Signal #2 Phase: ZB-MR1
 Signal #1 Info : 30M x 0.32mm x0.2 Signal #2 Info : 30M x 0.32mm x 0.50µm

Compound	RT#1	RT#2	Resp#1	Resp#2	ng/ml	ng/ml

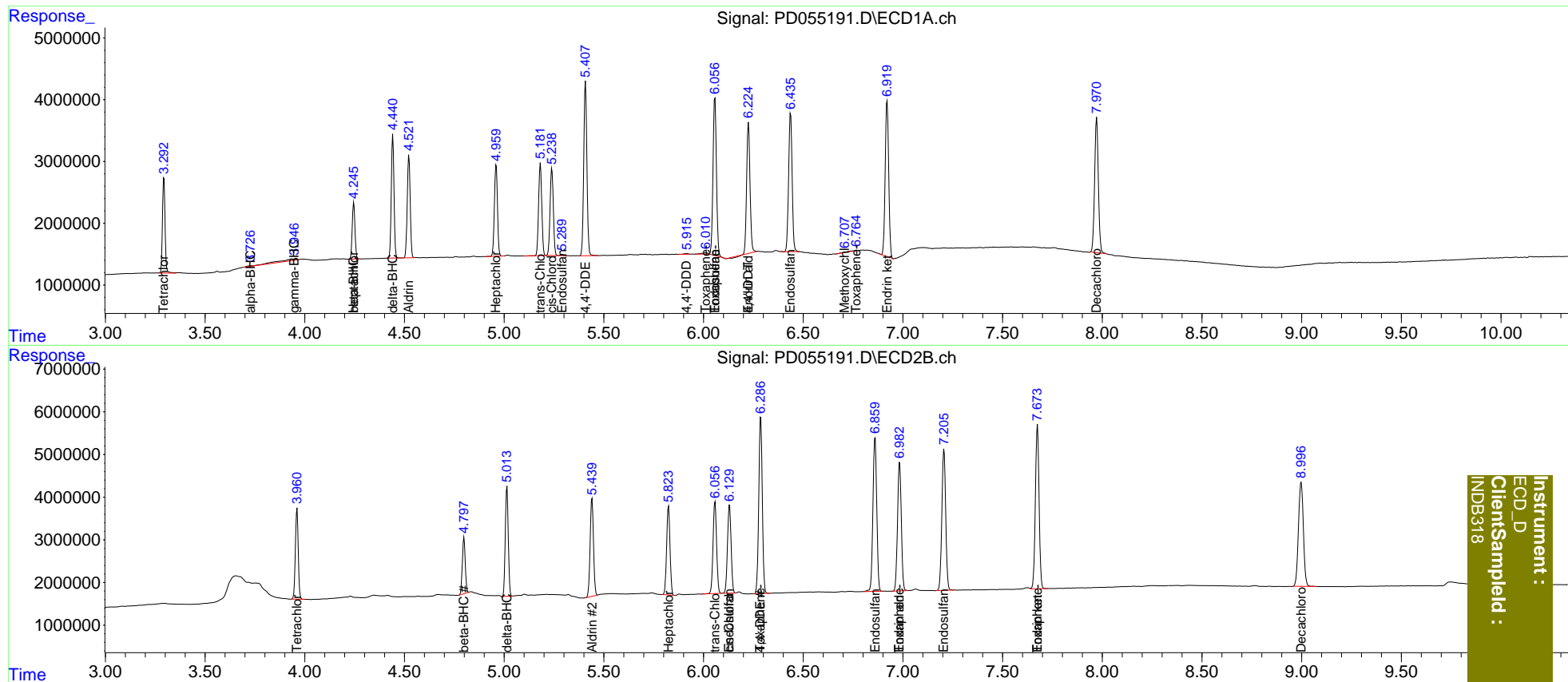
System Monitoring Compounds						
1) SA Tetrachlo...	3.294	3.961	14176851	21323893	18.635	20.779
2) SA Decachlor...	7.972	8.998	28428106	41775682	33.739	35.857
Target Compounds						
2) A alpha-BHC	3.728	0.000	176730	0	0.159	N.D. #
3) MA gamma-BHC...	3.947f	0.000	1895276	0	1.768	N.D. #
4) MA Heptachlor	4.246f	0.000	8633811	0	9.333	N.D. #
5) MB Aldrin	4.523	5.441	17026739	26698449	17.495	20.195
6) B beta-BHC	4.246	4.799	8633811	13468298	18.454	20.202
7) B delta-BHC	4.442	5.014	18743388	26563002	17.514	18.303
8) B Heptachlo...	4.960	5.824	15991048	24317561	17.427	18.492
9) A Endosulfan I	5.291	6.130f	201181	25834867	0.227	20.477 #
10) B trans-Chl...	5.182	6.058	16264897	26510856	17.218	19.559
11) B cis-Chlor...	5.240	6.130	15914809	25834867	17.388	19.614
12) B 4,4'-DDE	5.408	6.287	31080284	51093597	34.640	39.469
15) B Endosulfa...	6.057	6.860	30548692	47844976	35.068	37.623
16) A 4,4'-DDD	5.917	0.000	186143	0	0.257	N.D. #
17) MA 4,4'-DDT	6.226f	0.000	24426600	0	36.648	N.D. #
18) B Endrin al...	6.226	6.984	24426600	39960147	33.584	38.552
19) B Endosulfa...	6.437	7.206	27475488	44383217	33.851	37.366
20) A Methoxychlor	6.710	0.000	55202	0	0.156	N.D. #
21) B Endrin ke...	6.921	7.675	30845022	49733964	34.151	37.739
22) Toxaphene-1	0.000	6.287	0	51093597	N.D.	7777.656
24) Toxaphene-3	6.012	6.984	429273	39960147	85.930	3259.462 #
25) Toxaphene-4	6.057	0.000	30548692	0	2019.808	N.D. #
26) Toxaphene-5	6.766	7.675	161482	49733964	8.730	3029.357 #

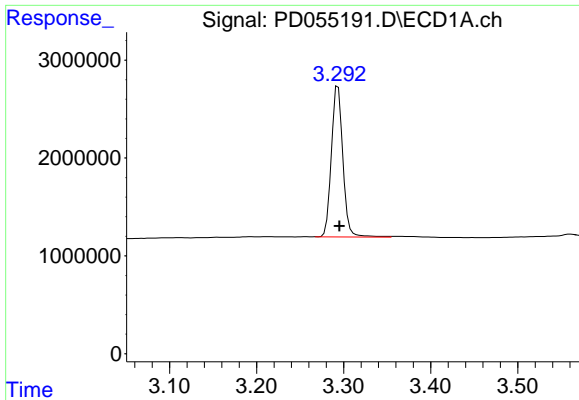
(f)=RT Delta > 1/2 Window (#)=Amounts differ by > 25% (m)=manual int.

Data Path : Z:\pestpcbsrv\HPCHEM1\ECD_D\Data\PD100719\
 Data File : PD055191.D
 Signal(s) : Signal #1: ECD1A.ch Signal #2: ECD2B.ch
 Acq On : 07 Oct 2019 14:59
 Operator : SG\AJ
 Sample : INDB318
 Misc :
 ALS Vial : 6 Sample Multiplier: 1

Integration File signal 1: autoint1.e
 Integration File signal 2: autoint2.e
 Quant Time: Oct 08 09:13:43 2019
 Quant Method : Z:\pestpcbsrv\HPCHEM1\ECD_D\Method\PD092319CLP.M
 Quant Title : GC Extractables
 QLast Update : Tue Sep 24 07:21:19 2019
 Response via : Initial Calibration
 Integrator: ChemStation

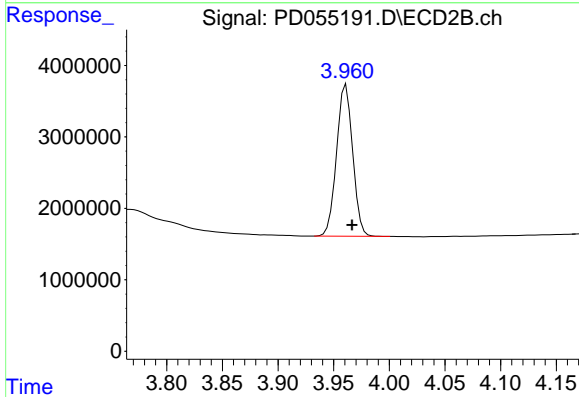
Volume Inj. : 1 µl
 Signal #1 Phase : ZB-MR2 Signal #2 Phase: ZB-MR1
 Signal #1 Info : 30M x 0.32mm x0.2 Signal #2 Info : 30M x 0.32mm x 0.50µm



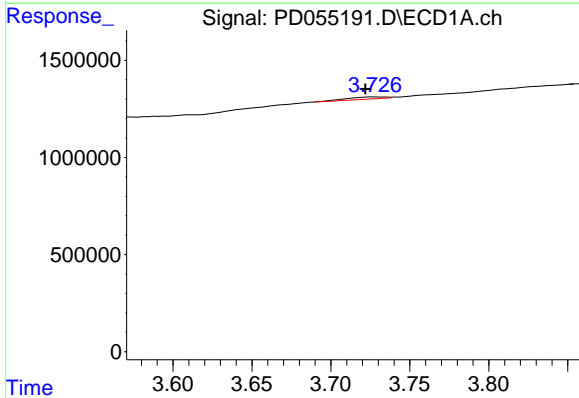


#1 Tetrachloro-m-xylene
 R.T.: 3.294 min
 Delta R.T.: -0.001 min
 Response: 14176851
 Conc: 18.63 ng/ml

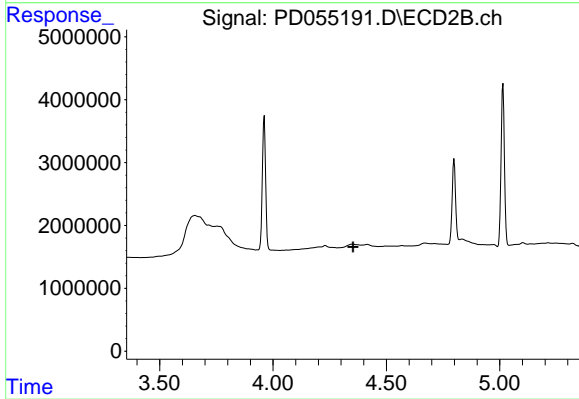
Instrument :
 ECD_D
 ClientSampled :
 INDB318



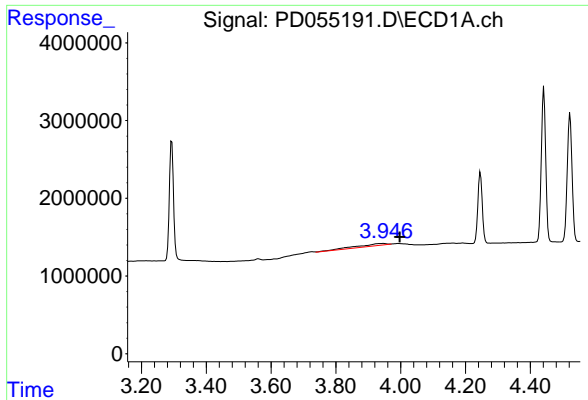
#1 Tetrachloro-m-xylene
 R.T.: 3.961 min
 Delta R.T.: -0.005 min
 Response: 21323893
 Conc: 20.78 ng/ml



#2 alpha-BHC
 R.T.: 3.728 min
 Delta R.T.: 0.006 min
 Response: 176730
 Conc: 0.16 ng/ml

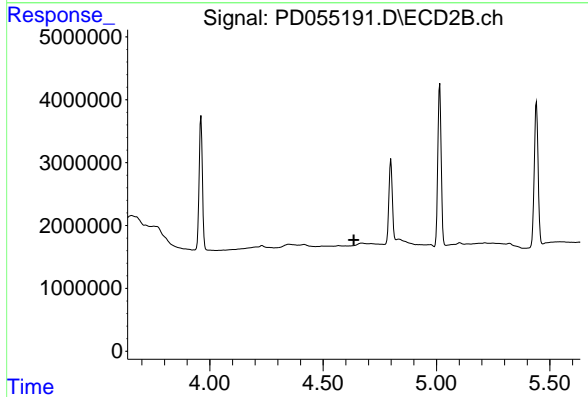


#2 alpha-BHC
 R.T.: 0.000 min
 Exp R.T. : 4.353 min
 Response: 0
 Conc: N.D.

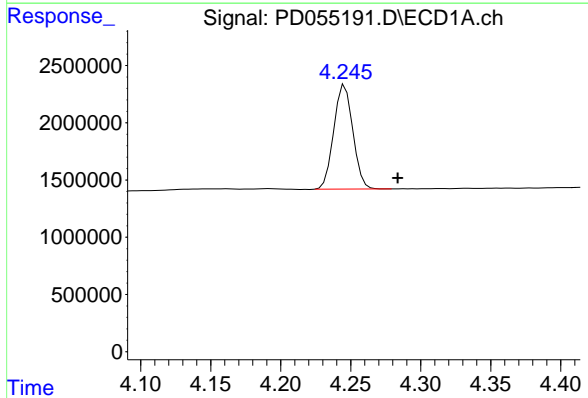


#3 gamma-BHC (Lindane)
 R.T.: 3.947 min
 Delta R.T.: -0.050 min
 Response: 1895276
 Conc: 1.77 ng/ml

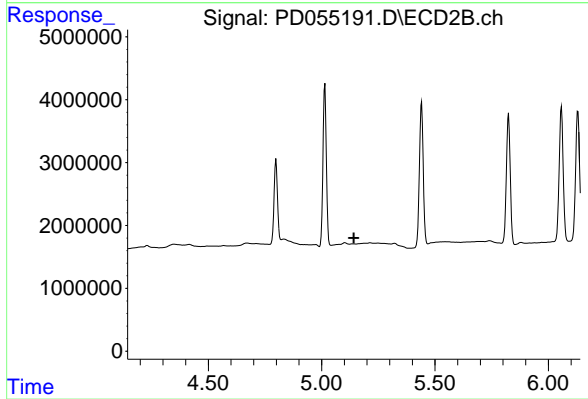
Instrument :
 ECD_D
 ClientSampled :
 INDB318



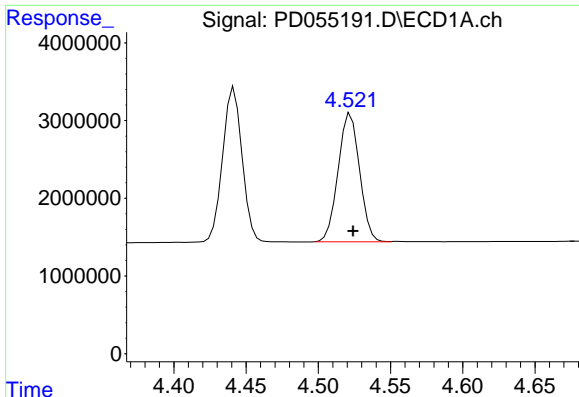
#3 gamma-BHC (Lindane)
 R.T.: 0.000 min
 Exp R.T. : 4.635 min
 Response: 0
 Conc: N.D.



#4 Heptachlor
 R.T.: 4.246 min
 Delta R.T.: -0.038 min
 Response: 8633811
 Conc: 9.33 ng/ml

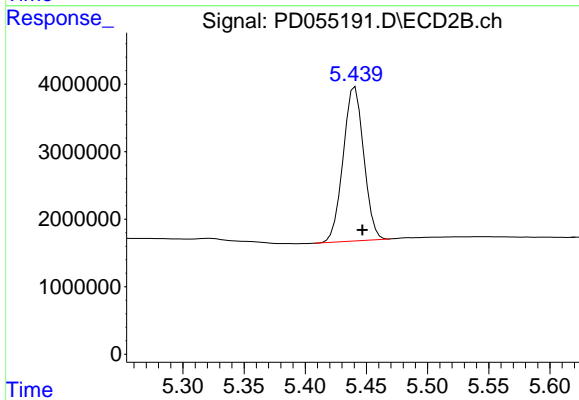


#4 Heptachlor
 R.T.: 0.000 min
 Exp R.T. : 5.142 min
 Response: 0
 Conc: N.D.

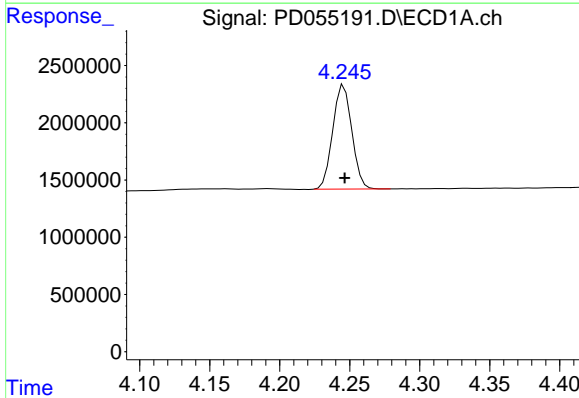


#5 Aldrin
 R.T.: 4.523 min
 Delta R.T.: -0.002 min
 Response: 17026739
 Conc: 17.50 ng/ml

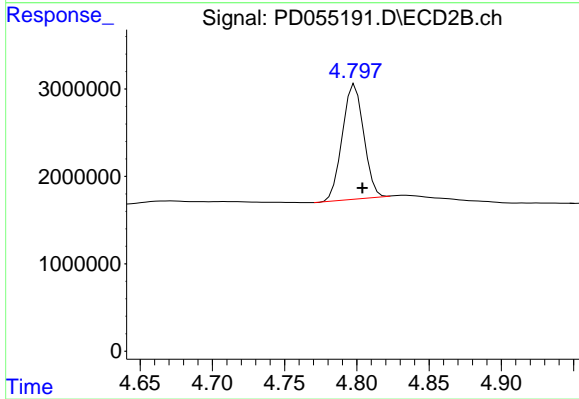
Instrument :
 ECD_D
 ClientSampled :
 INDB318



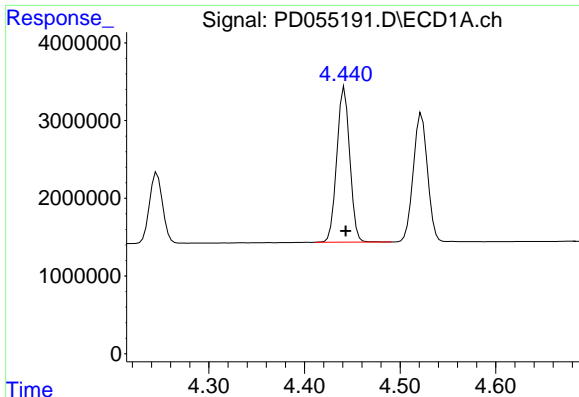
#5 Aldrin
 R.T.: 5.441 min
 Delta R.T.: -0.006 min
 Response: 26698449
 Conc: 20.20 ng/ml



#6 beta-BHC
 R.T.: 4.246 min
 Delta R.T.: 0.000 min
 Response: 8633811
 Conc: 18.45 ng/ml



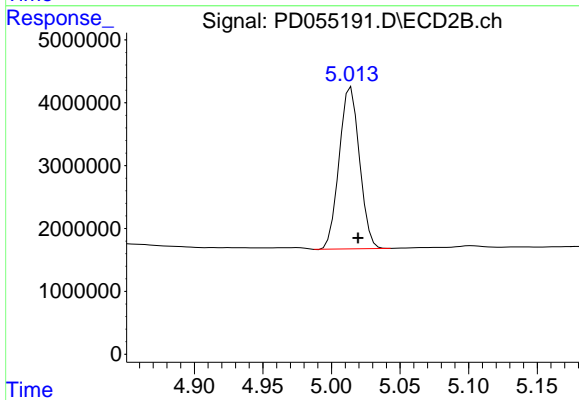
#6 beta-BHC
 R.T.: 4.799 min
 Delta R.T.: -0.005 min
 Response: 13468298
 Conc: 20.20 ng/ml



#7 delta-BHC

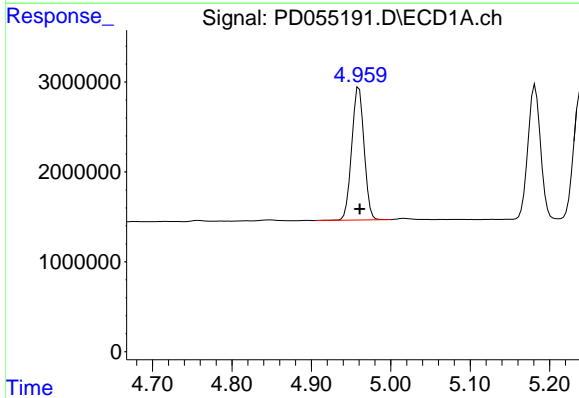
R.T.: 4.442 min
 Delta R.T.: -0.001 min
 Response: 18743388
 Conc: 17.51 ng/ml

Instrument :
 ECD_D
 ClientSampled :
 INDB318



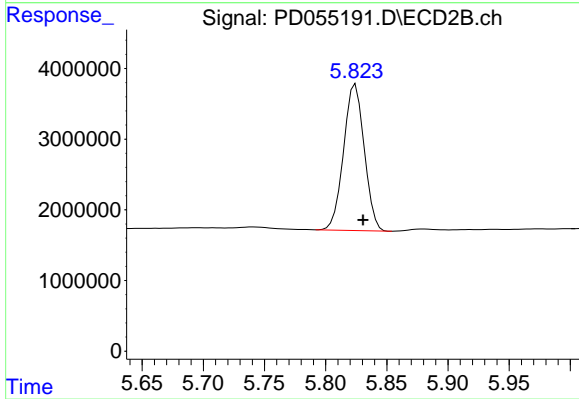
#7 delta-BHC

R.T.: 5.014 min
 Delta R.T.: -0.005 min
 Response: 26563002
 Conc: 18.30 ng/ml



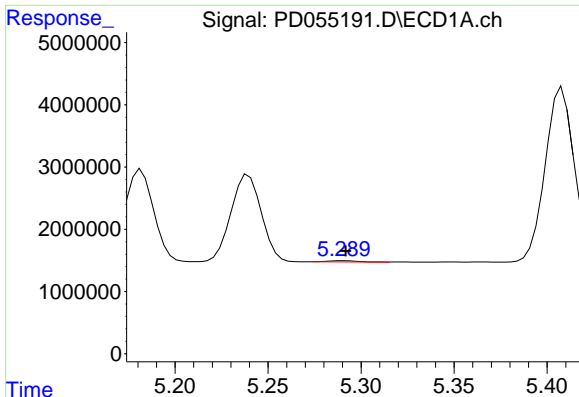
#8 Heptachlor epoxide

R.T.: 4.960 min
 Delta R.T.: 0.000 min
 Response: 15991048
 Conc: 17.43 ng/ml



#8 Heptachlor epoxide

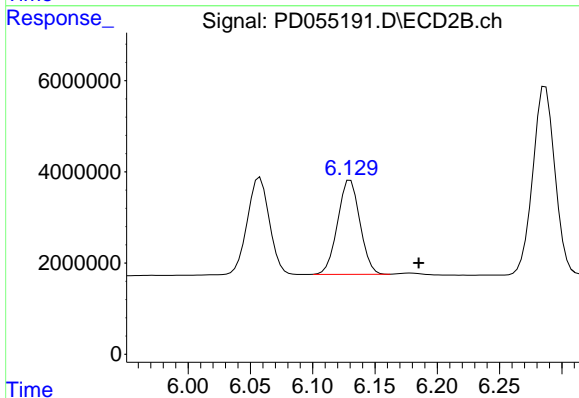
R.T.: 5.824 min
 Delta R.T.: -0.006 min
 Response: 24317561
 Conc: 18.49 ng/ml



#9 Endosulfan I

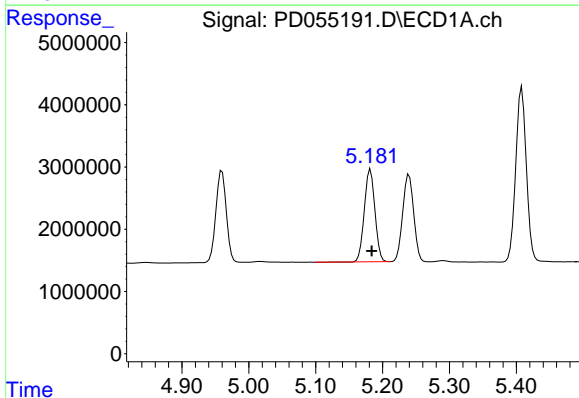
R.T.: 5.291 min
 Delta R.T.: -0.001 min
 Response: 201181
 Conc: 0.23 ng/ml

Instrument :
 ECD_D
 ClientSampled :
 INDB318



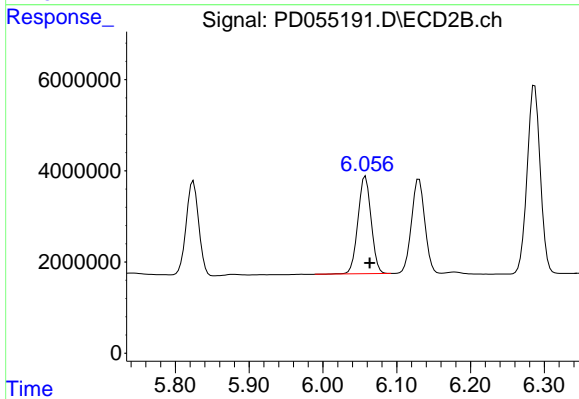
#9 Endosulfan I

R.T.: 6.130 min
 Delta R.T.: -0.055 min
 Response: 25834867
 Conc: 20.48 ng/ml



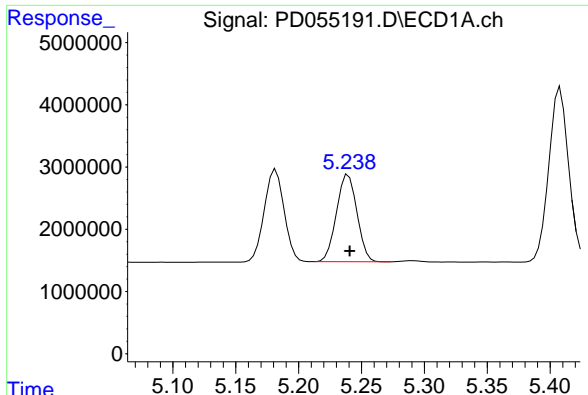
#10 trans-Chlordane

R.T.: 5.182 min
 Delta R.T.: -0.002 min
 Response: 16264897
 Conc: 17.22 ng/ml



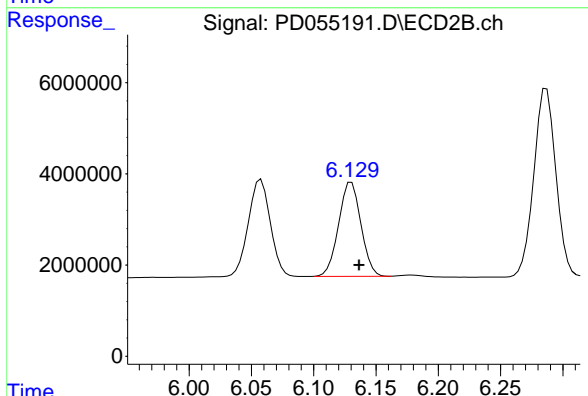
#10 trans-Chlordane

R.T.: 6.058 min
 Delta R.T.: -0.006 min
 Response: 26510856
 Conc: 19.56 ng/ml

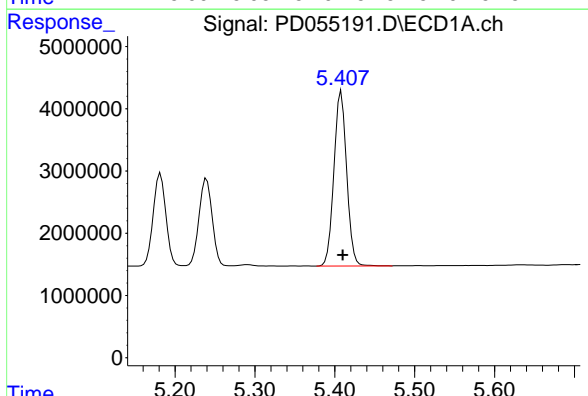


#11 cis-Chlordane
 R.T.: 5.240 min
 Delta R.T.: -0.001 min
 Response: 15914809
 Conc: 17.39 ng/ml

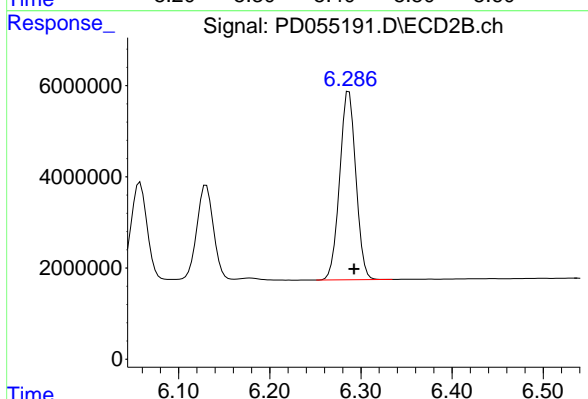
Instrument :
 ECD_D
 ClientSampled :
 INDB318



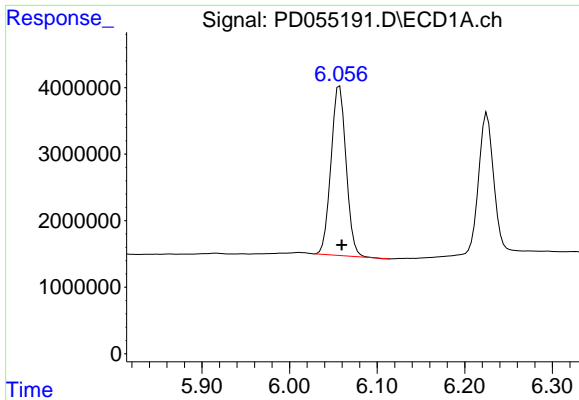
#11 cis-Chlordane
 R.T.: 6.130 min
 Delta R.T.: -0.006 min
 Response: 25834867
 Conc: 19.61 ng/ml



#12 4,4'-DDE
 R.T.: 5.408 min
 Delta R.T.: -0.002 min
 Response: 31080284
 Conc: 34.64 ng/ml

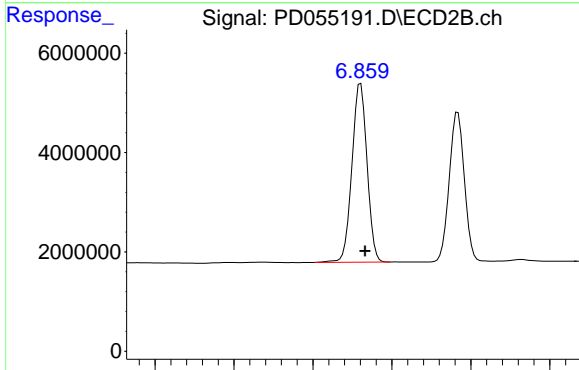


#12 4,4'-DDE
 R.T.: 6.287 min
 Delta R.T.: -0.006 min
 Response: 51093597
 Conc: 39.47 ng/ml

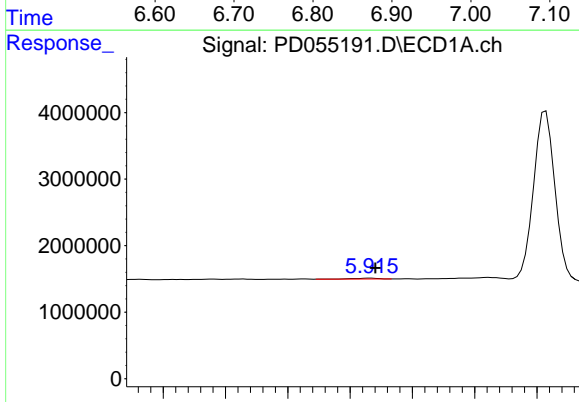


#15 Endosulfan II
 R.T.: 6.057 min
 Delta R.T.: -0.002 min
 Response: 30548692
 Conc: 35.07 ng/ml

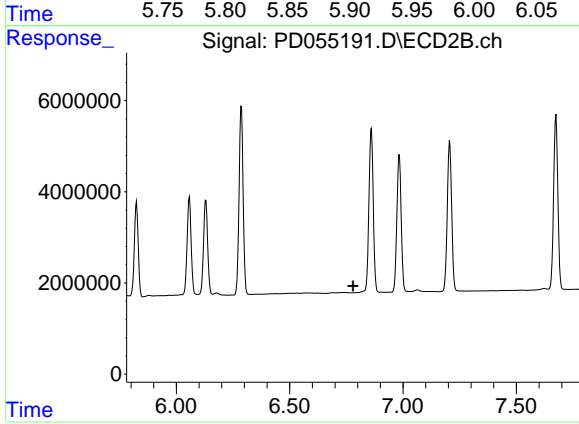
Instrument :
 ECD_D
 ClientSampled :
 INDB318



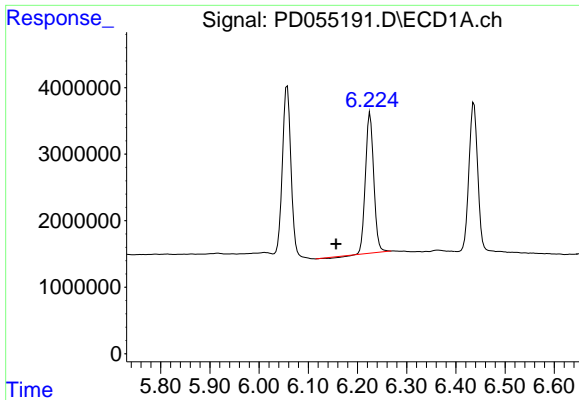
#15 Endosulfan II
 R.T.: 6.860 min
 Delta R.T.: -0.006 min
 Response: 47844976
 Conc: 37.62 ng/ml



#16 4,4'-DDD
 R.T.: 5.917 min
 Delta R.T.: -0.004 min
 Response: 186143
 Conc: 0.26 ng/ml

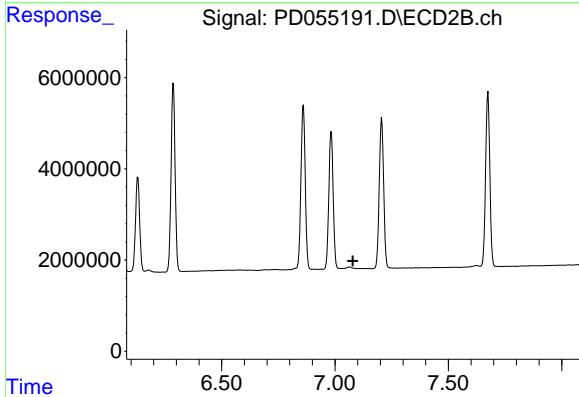


#16 4,4'-DDD
 R.T.: 0.000 min
 Exp R.T. : 6.780 min
 Response: 0
 Conc: N.D.

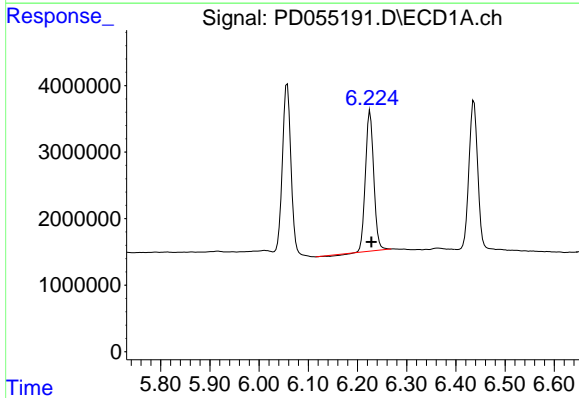


#17 4,4'-DDT
 R.T.: 6.226 min
 Delta R.T.: 0.069 min
 Response: 24426600
 Conc: 36.65 ng/ml

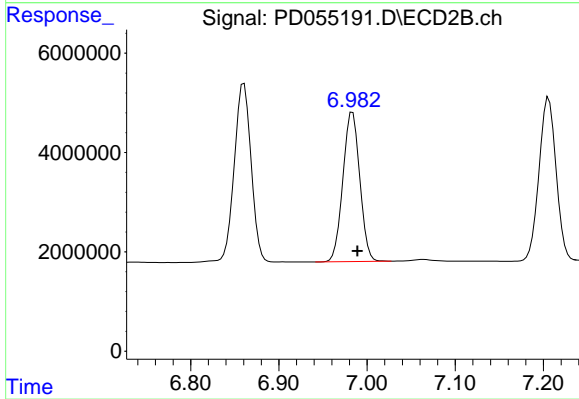
Instrument :
 ECD_D
 ClientSampled :
 INDB318



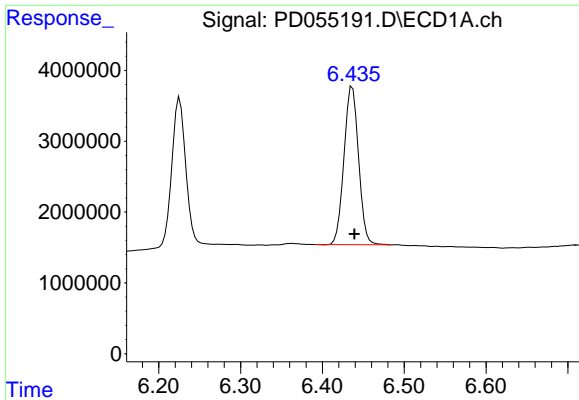
#17 4,4'-DDT
 R.T.: 0.000 min
 Exp R.T. : 7.078 min
 Response: 0
 Conc: N.D.



#18 Endrin aldehyde
 R.T.: 6.226 min
 Delta R.T.: -0.002 min
 Response: 24426600
 Conc: 33.58 ng/ml

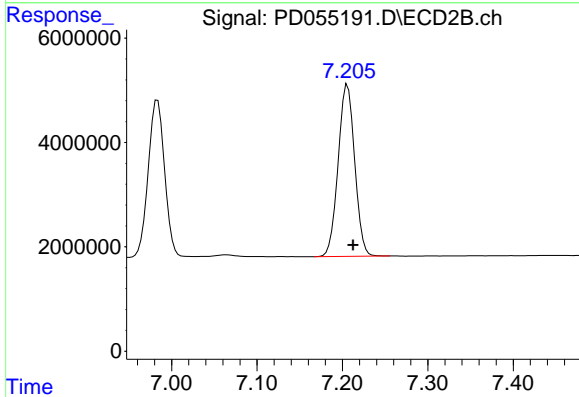


#18 Endrin aldehyde
 R.T.: 6.984 min
 Delta R.T.: -0.006 min
 Response: 39960147
 Conc: 38.55 ng/ml

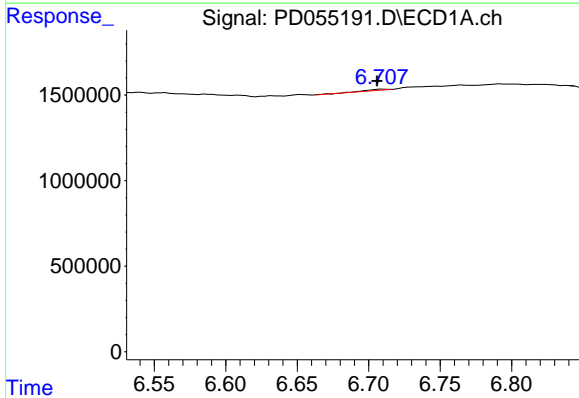


#19 Endosulfan Sulfate
 R.T.: 6.437 min
 Delta R.T.: -0.002 min
 Response: 27475488
 Conc: 33.85 ng/ml

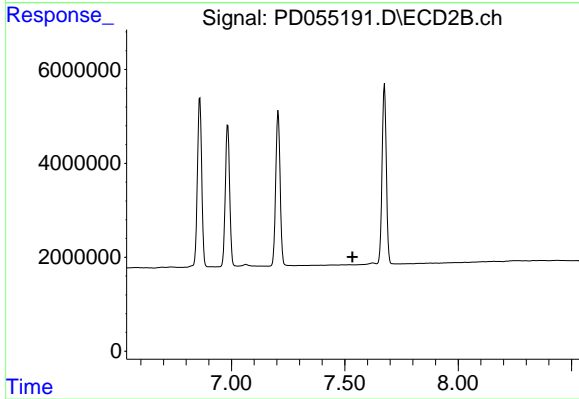
Instrument :
 ECD_D
 ClientSampled :
 INDB318



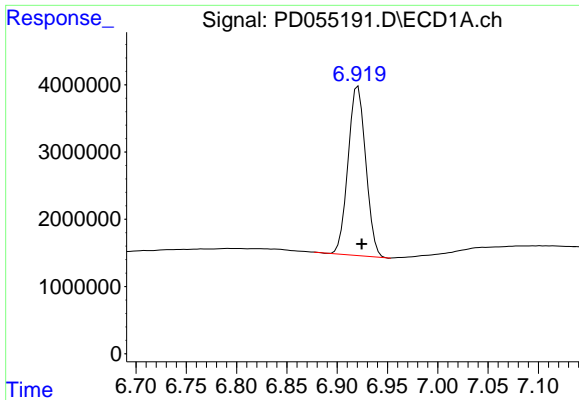
#19 Endosulfan Sulfate
 R.T.: 7.206 min
 Delta R.T.: -0.006 min
 Response: 44383217
 Conc: 37.37 ng/ml



#20 Methoxychlor
 R.T.: 6.710 min
 Delta R.T.: 0.004 min
 Response: 55202
 Conc: 0.16 ng/ml



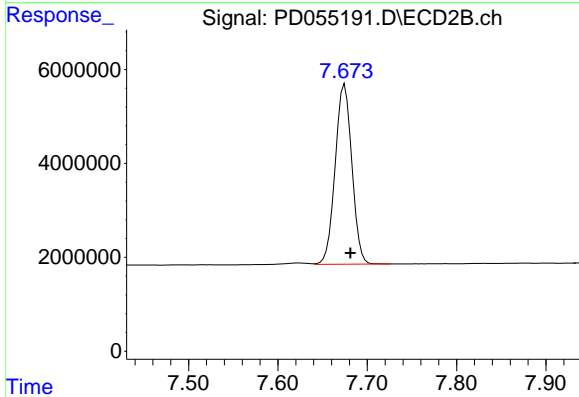
#20 Methoxychlor
 R.T.: 0.000 min
 Exp R.T. : 7.535 min
 Response: 0
 Conc: N.D.



#21 Endrin ketone

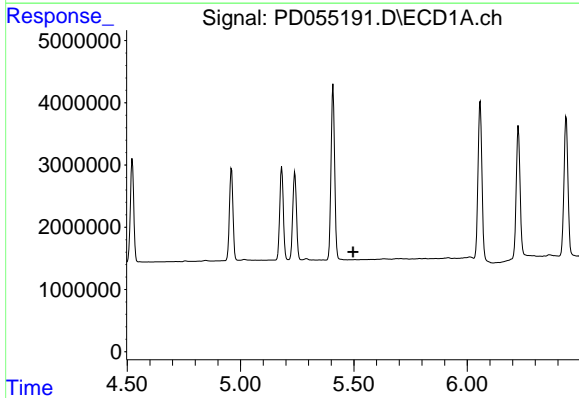
R.T.: 6.921 min
 Delta R.T.: -0.004 min
 Response: 30845022
 Conc: 34.15 ng/ml

Instrument :
 ECD_D
 ClientSampleId :
 INDB318



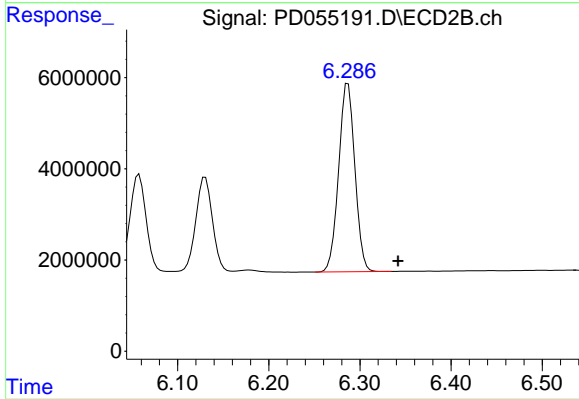
#21 Endrin ketone

R.T.: 7.675 min
 Delta R.T.: -0.006 min
 Response: 49733964
 Conc: 37.74 ng/ml



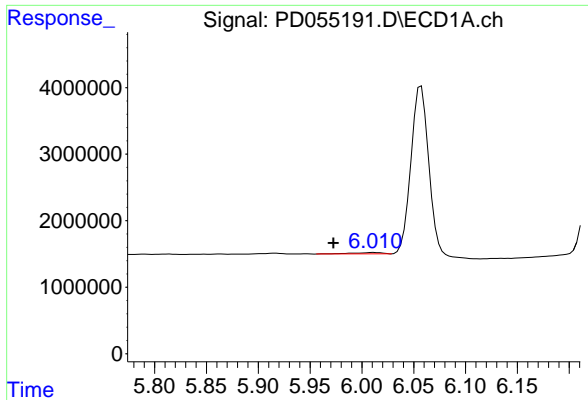
#22 Toxaphene-1

R.T.: 0.000 min
 Exp R.T. : 5.496 min
 Response: 0
 Conc: N.D.



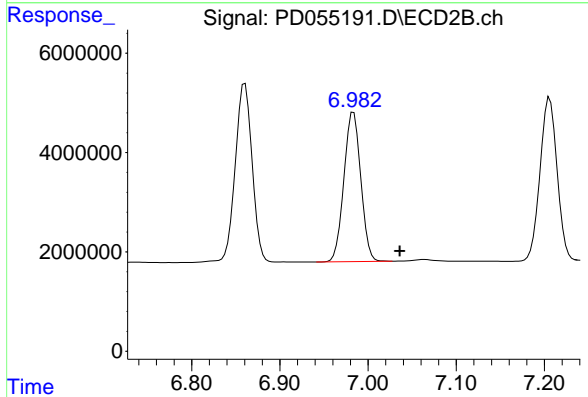
#22 Toxaphene-1

R.T.: 6.287 min
 Delta R.T.: -0.055 min
 Response: 51093597
 Conc: 7777.66 ng/ml

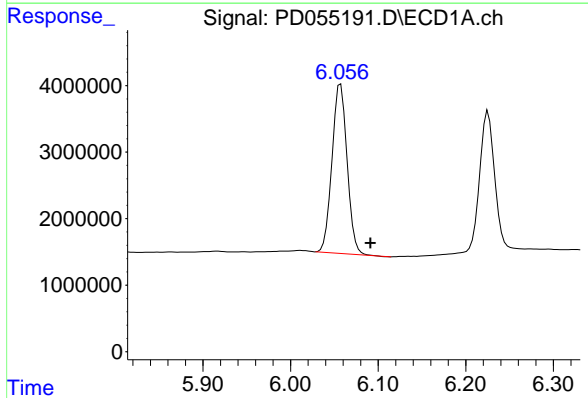


#24 Toxaphene-3
 R.T.: 6.012 min
 Delta R.T.: 0.039 min
 Response: 429273
 Conc: 85.93 ng/ml

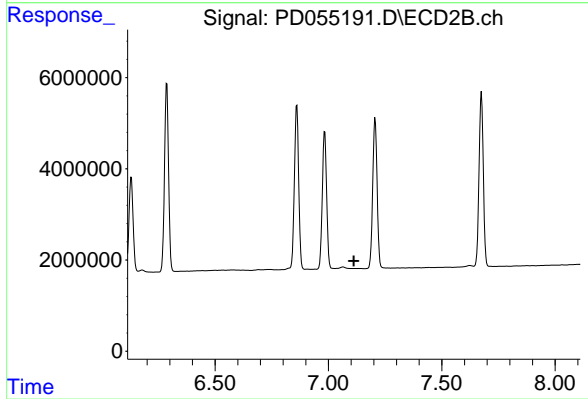
Instrument :
 ECD_D
 ClientSampleId :
 INDB318



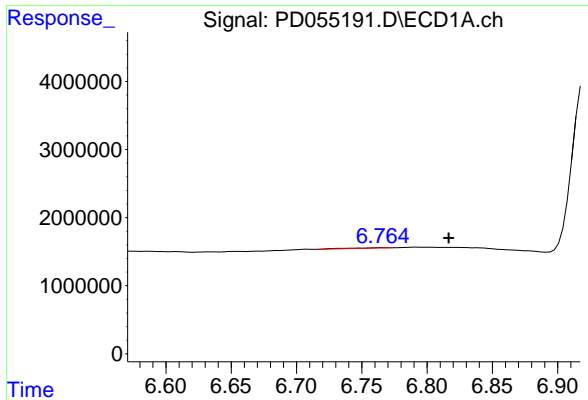
#24 Toxaphene-3
 R.T.: 6.984 min
 Delta R.T.: -0.052 min
 Response: 39960147
 Conc: 3259.46 ng/ml



#25 Toxaphene-4
 R.T.: 6.057 min
 Delta R.T.: -0.034 min
 Response: 30548692
 Conc: 2019.81 ng/ml

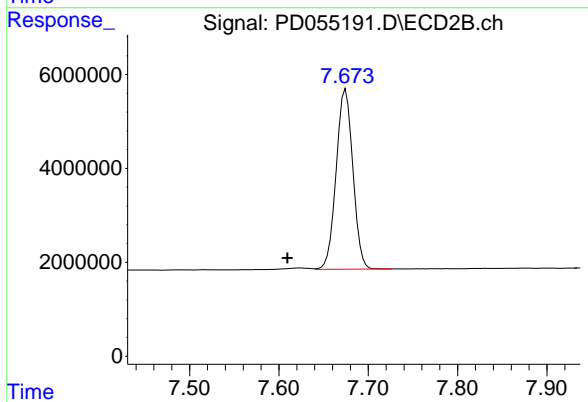


#25 Toxaphene-4
 R.T.: 0.000 min
 Exp R.T. : 7.112 min
 Response: 0
 Conc: N.D.

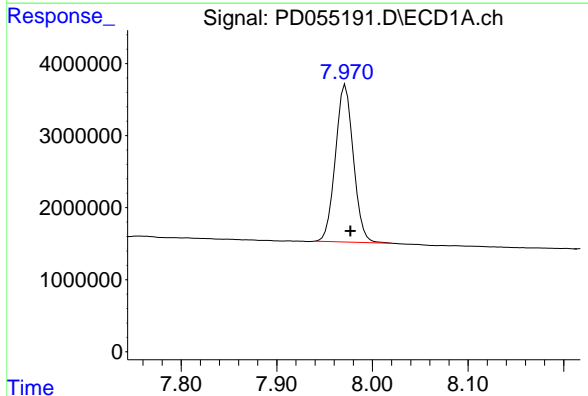


#26 Toxaphene-5
 R.T.: 6.766 min
 Delta R.T.: -0.050 min
 Response: 161482
 Conc: 8.73 ng/ml

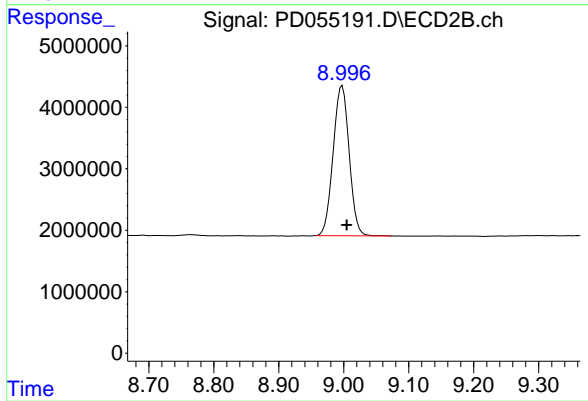
Instrument :
 ECD_D
 ClientSampled :
 INDB318



#26 Toxaphene-5
 R.T.: 7.675 min
 Delta R.T.: 0.065 min
 Response: 49733964
 Conc: 3029.36 ng/ml



#27 Decachlorobiphenyl
 R.T.: 7.972 min
 Delta R.T.: -0.005 min
 Response: 28428106
 Conc: 33.74 ng/ml



#27 Decachlorobiphenyl
 R.T.: 8.998 min
 Delta R.T.: -0.007 min
 Response: 41775682
 Conc: 35.86 ng/ml