

Data Path : Z:\pestpcbsrv\HPCHEM1\ECD_D\Data\PD100725\
 Data File : PD090536.D
 Signal(s) : Signal #1: ECD1A.ch Signal #2: ECD2B.ch
 Acq On : 07 Oct 2025 10:26
 Operator : AR\AJ
 Sample : Q3271-01
 Misc :
 ALS Vial : 6 Sample Multiplier: 1

Instrument :
 ECD_D
 ClientSampleId :

Integration File signal 1: autoint1.e
 Integration File signal 2: autoint2.e
 Quant Time: Oct 07 11:05:02 2025
 Quant Method : Z:\pestpcbsrv\HPCHEM1\ECD_D\Method\PD091825.M
 Quant Title : GC Extractables
 QLast Update : Fri Sep 19 05:52:38 2025
 Response via : Initial Calibration
 Integrator: ChemStation

Volume Inj. : 1 µl
 Signal #1 Phase : ZB-MR2 Signal #2 Phase: ZB-MR2
 Signal #1 Info : 30M x 0.32mm x0.5 Signal #2 Info : 30M x 0.32mm x 0.25µm

	Compound	RT#1	RT#2	Resp#1	Resp#2	ng/ml	ng/ml

System Monitoring Compounds							
1)	SA Tetrachlo...	3.545	2.875	43209844	371.0E6	13.293	13.517
28)	SA Decachlor...	9.065	8.061	56346067	263.3E6	11.678	8.124 #
Target Compounds							
2)	A alpha-BHC	3.972f	3.374	532043	1417897	0.076	0.032 #
4)	MA Heptachlor	4.946f	4.057f	938067	9755962	0.142	0.240 #
5)	MB Aldrin	5.246f	4.356	418728	8645719	0.066	0.216 #
6)	B beta-BHC	0.000	4.032	0	12021294	N.D.	0.693 #
7)	B delta-BHC	4.771	4.247	1927827	61829	0.299	0.001 #
8)	B Heptachlo...	5.677	4.864	10976115	9525177	1.921	0.258 #
9)	A Endosulfan I	6.100f	5.267f	3954491	33006828	0.732	0.954 #
10)	B gamma-Chl...	5.937	5.119	1478716	33169531	0.259	0.844 #
11)	B alpha-Chl...	6.025	5.190	1247705	76243919	0.217	2.024 #
12)	B 4,4'-DDE	0.000	5.366	0	56558195	N.D.	1.478 #
13)	MA Dieldrin	6.354	5.506	174148	64532424	0.030	1.657 #
14)	MA Endrin	0.000	5.786	0	166.1E6	N.D.	4.637 #
15)	B Endosulfa...	6.787	6.063	16527822	-14521647	3.388	N.D. #
16)	A 4,4'-DDD	6.687	5.922	11933061	1546884	2.912	0.048 #
17)	MA 4,4'-DDT	6.988f	6.171	4563725	8710847	1.025	0.253 #
18)	B Endrin al...	6.888f	6.246	8446606	13164937	2.462	0.559 #
20)	A Methoxychlor	7.489	0.000	1323543	0	0.562	N.D. #
22)	Mirex	0.000	7.167	0	1546871	N.D.	0.056 #
23)	Chlordane-1	0.000	3.897	0	45596963	N.D.	37.887 #
24)	Chlordane-2	5.246	4.471	418728	37097574	1.951	29.667 #
25)	Chlordane-3	5.937	5.119	1478716	33169531	1.767	8.751 #
26)	Chlordane-4	6.025	5.190	1247705	76243919	1.223	23.416 #
27)	Chlordane-5	6.888f	6.090	8446606	6180592	47.444	4.073 #

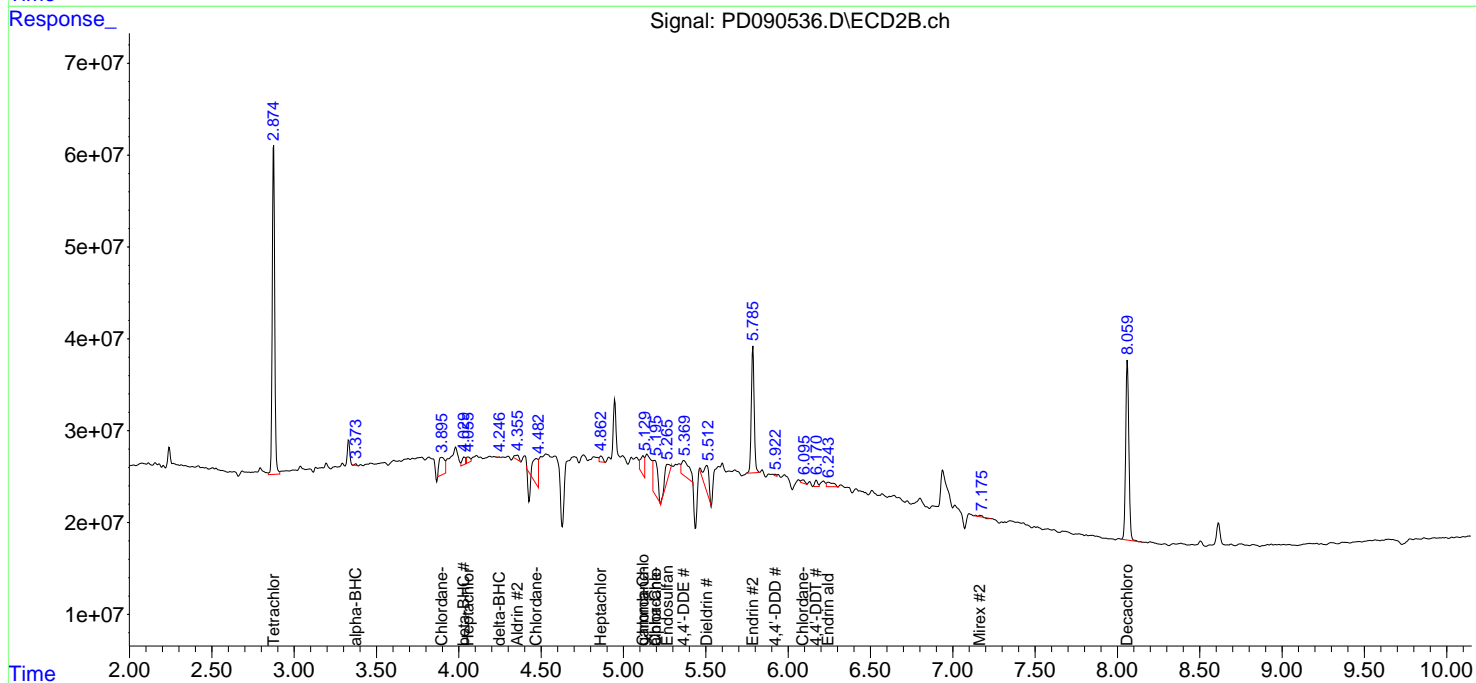
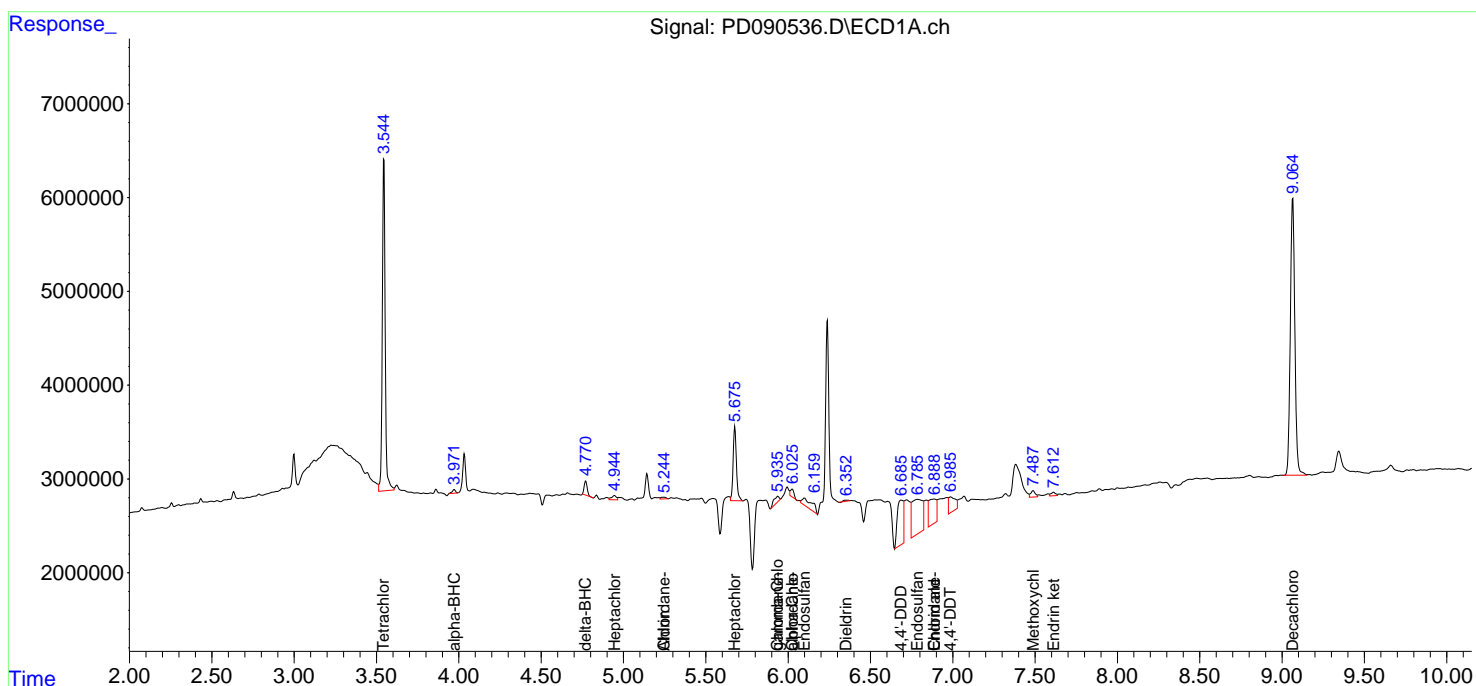
(f)=RT Delta > 1/2 Window (#)=Amounts differ by > 25% (m)=manual int.

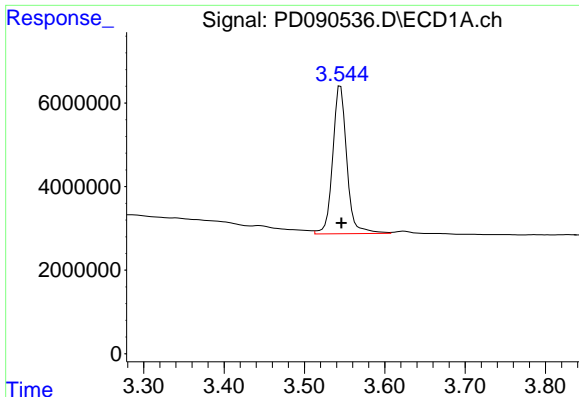
Data Path : Z:\pestpcbsrv\HPCHEM1\ECD_D\Data\PD100725\
 Data File : PD090536.D
 Signal(s) : Signal #1: ECD1A.ch Signal #2: ECD2B.ch
 Acq On : 07 Oct 2025 10:26
 Operator : AR\AJ
 Sample : Q3271-01
 Misc :
 ALS Vial : 6 Sample Multiplier: 1

Instrument :
 ECD_D
 ClientSampleId :

Integration File signal 1: autoint1.e
 Integration File signal 2: autoint2.e
 Quant Time: Oct 07 11:05:02 2025
 Quant Method : Z:\pestpcbsrv\HPCHEM1\ECD_D\Method\PD091825.M
 Quant Title : GC Extractables
 QLast Update : Fri Sep 19 05:52:38 2025
 Response via : Initial Calibration
 Integrator: ChemStation

Volume Inj. : 1 µl
 Signal #1 Phase : ZB-MR1 Signal #2 Phase: ZB-MR2
 Signal #1 Info : 30M x 0.32mm x0.5 Signal #2 Info : 30M x 0.32mm x 0.25µm

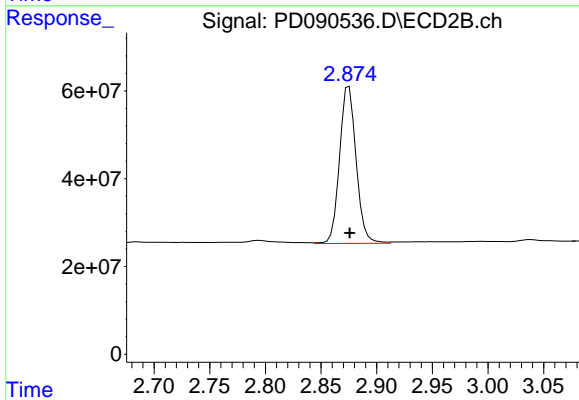




#1 Tetrachloro-m-xylene

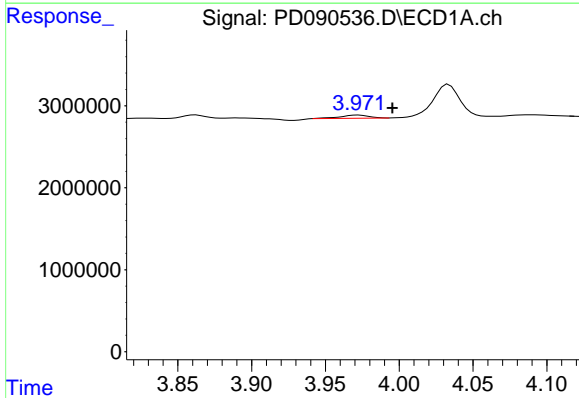
R.T.: 3.545 min
 Delta R.T.: -0.001 min
 Response: 43209844
 Conc: 13.29 ng/ml

Instrument :
 ECD_D
 ClientSampleId :



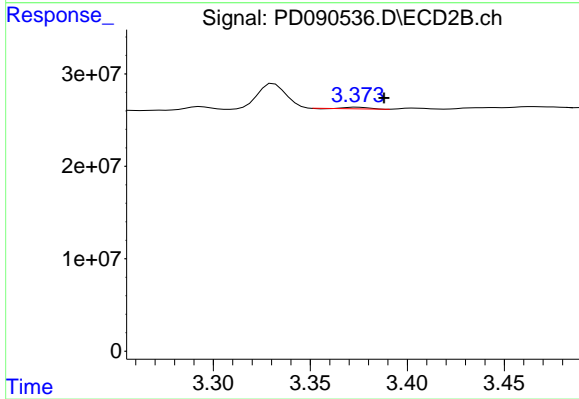
#1 Tetrachloro-m-xylene

R.T.: 2.875 min
 Delta R.T.: 0.000 min
 Response: 371034869
 Conc: 13.52 ng/ml



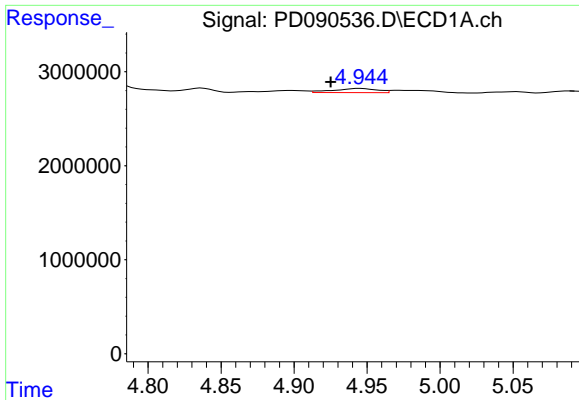
#2 alpha-BHC

R.T.: 3.972 min
 Delta R.T.: -0.023 min
 Response: 532043
 Conc: 0.08 ng/ml



#2 alpha-BHC

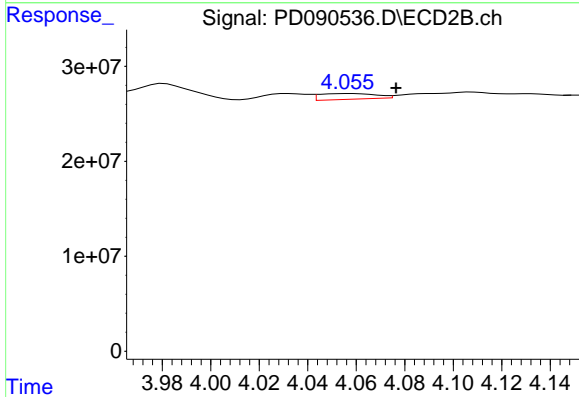
R.T.: 3.374 min
 Delta R.T.: -0.013 min
 Response: 1417897
 Conc: 0.03 ng/ml



#4 Heptachlor

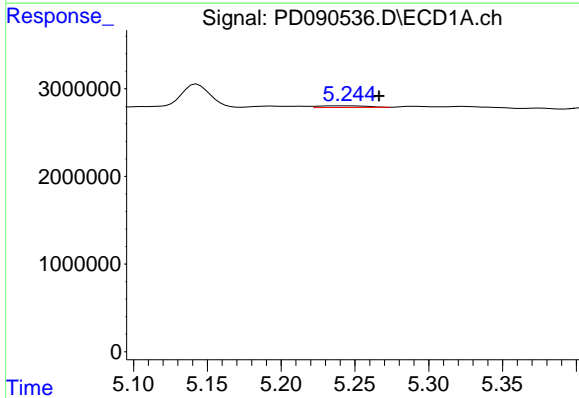
R.T.: 4.946 min
 Delta R.T.: 0.021 min
 Response: 938067
 Conc: 0.14 ng/ml

Instrument :
 ECD_D
 ClientSampleId :



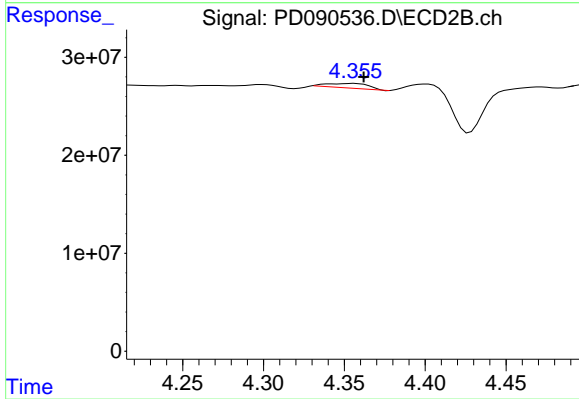
#4 Heptachlor

R.T.: 4.057 min
 Delta R.T.: -0.019 min
 Response: 9755962
 Conc: 0.24 ng/ml



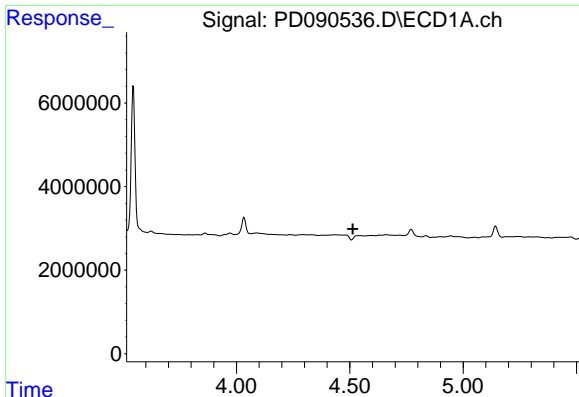
#5 Aldrin

R.T.: 5.246 min
 Delta R.T.: -0.021 min
 Response: 418728
 Conc: 0.07 ng/ml



#5 Aldrin

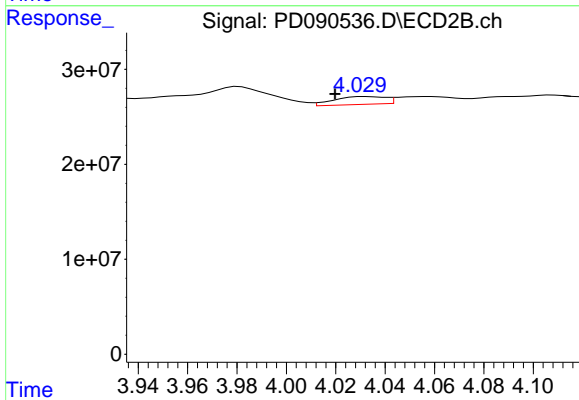
R.T.: 4.356 min
 Delta R.T.: -0.006 min
 Response: 8645719
 Conc: 0.22 ng/ml



#6 beta-BHC

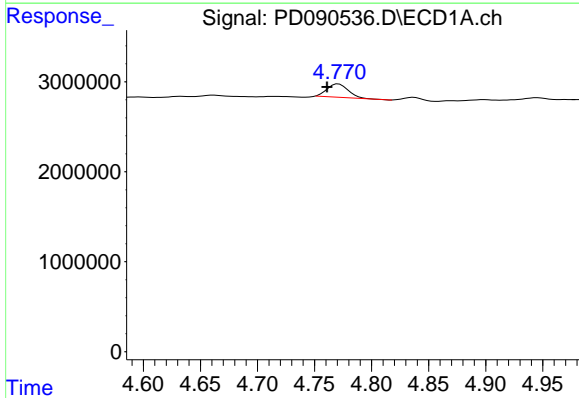
R.T.: 0.000 min
 Exp R.T.: 4.513 min
 Response: 0
 Conc: N.D.

Instrument :
 ECD_D
 ClientSampleId :



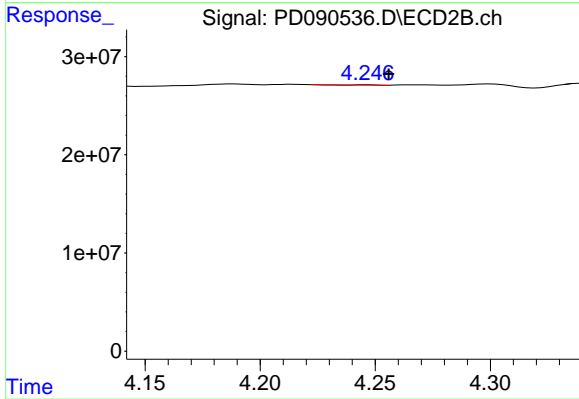
#6 beta-BHC

R.T.: 4.032 min
 Delta R.T.: 0.012 min
 Response: 12021294
 Conc: 0.69 ng/ml



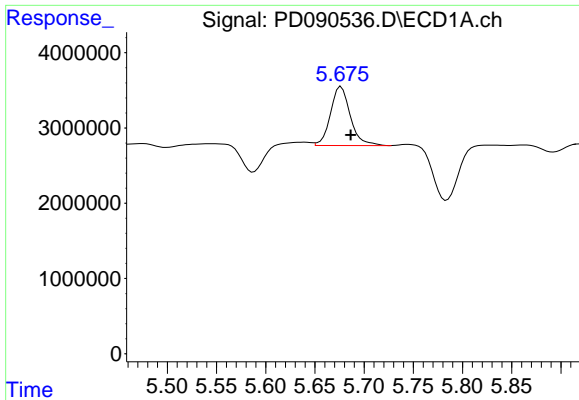
#7 delta-BHC

R.T.: 4.771 min
 Delta R.T.: 0.010 min
 Response: 1927827
 Conc: 0.30 ng/ml



#7 delta-BHC

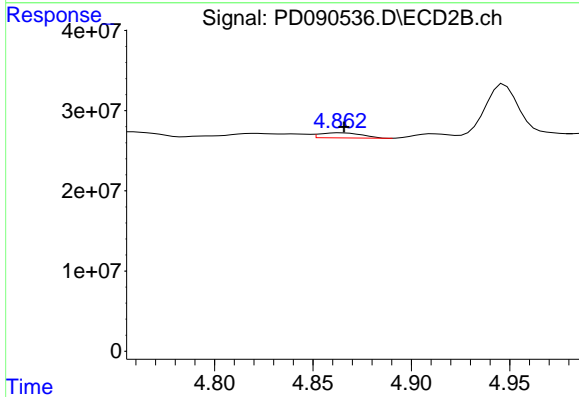
R.T.: 4.247 min
 Delta R.T.: -0.009 min
 Response: 61829
 Conc: 0.00 ng/ml



#8 Heptachlor epoxide

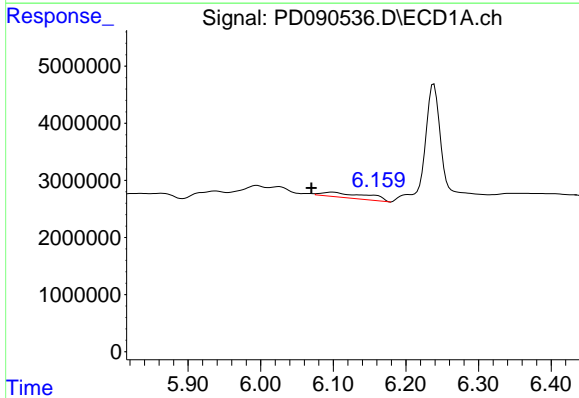
R.T.: 5.677 min
 Delta R.T.: -0.010 min
 Response: 10976115
 Conc: 1.92 ng/ml

Instrument :
 ECD_D
 ClientSampleId :



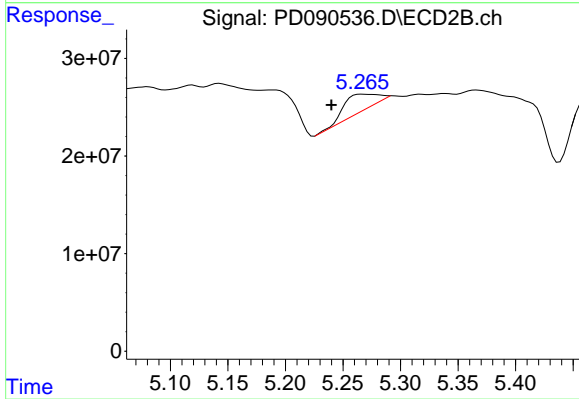
#8 Heptachlor epoxide

R.T.: 4.864 min
 Delta R.T.: -0.002 min
 Response: 9525177
 Conc: 0.26 ng/ml



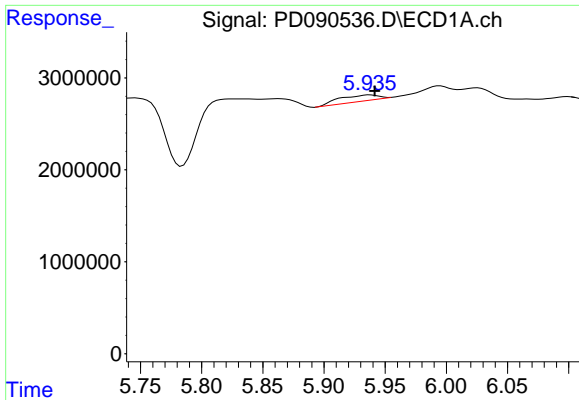
#9 Endosulfan I

R.T.: 6.100 min
 Delta R.T.: 0.030 min
 Response: 3954491
 Conc: 0.73 ng/ml



#9 Endosulfan I

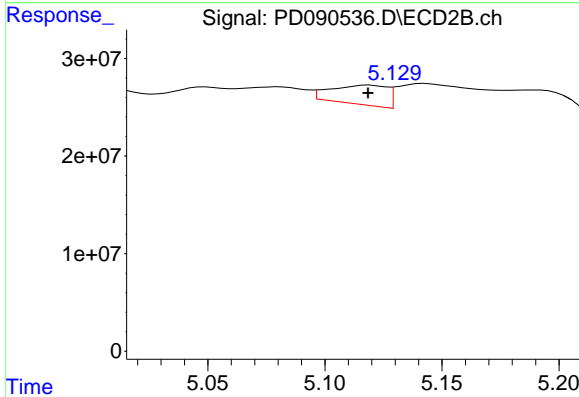
R.T.: 5.267 min
 Delta R.T.: 0.027 min
 Response: 33006828
 Conc: 0.95 ng/ml



#10 gamma-Chlordane

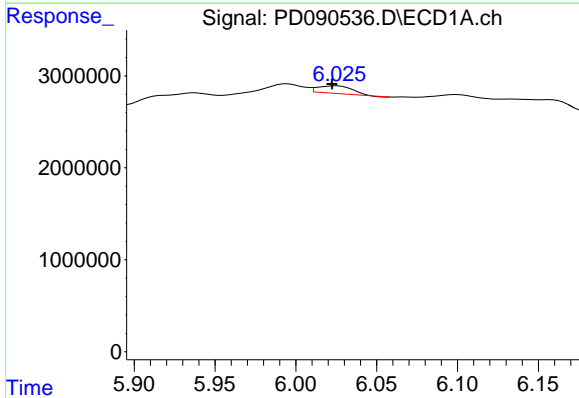
R.T.: 5.937 min
 Delta R.T.: -0.004 min
 Response: 1478716
 Conc: 0.26 ng/ml

Instrument :
 ECD_D
 ClientSampleId :



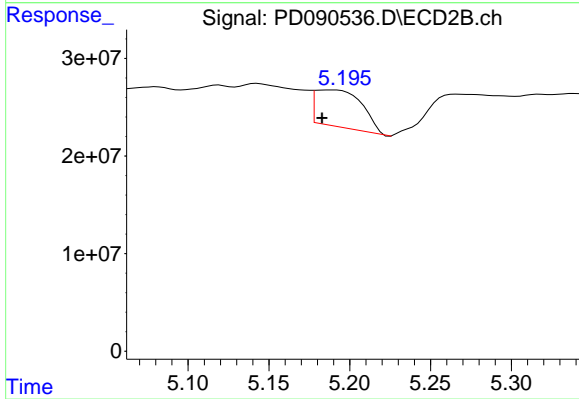
#10 gamma-Chlordane

R.T.: 5.119 min
 Delta R.T.: 0.000 min
 Response: 33169531
 Conc: 0.84 ng/ml



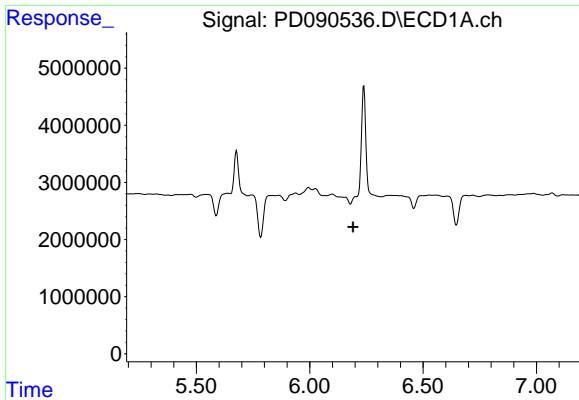
#11 alpha-Chlordane

R.T.: 6.025 min
 Delta R.T.: 0.003 min
 Response: 1247705
 Conc: 0.22 ng/ml



#11 alpha-Chlordane

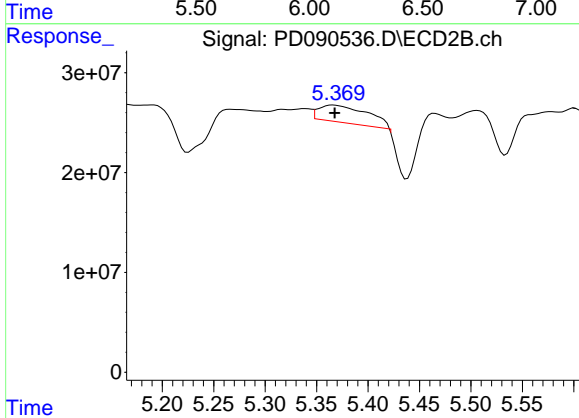
R.T.: 5.190 min
 Delta R.T.: 0.007 min
 Response: 76243919
 Conc: 2.02 ng/ml



#12 4,4'-DDE

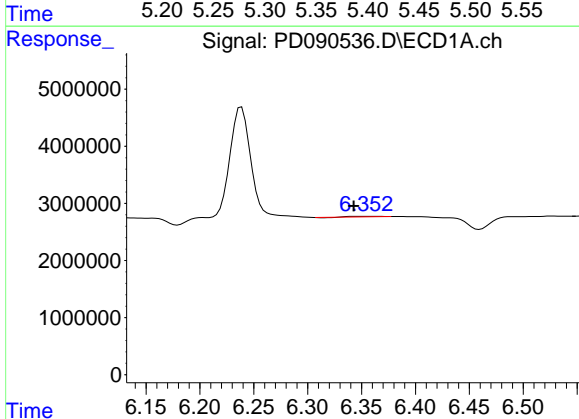
R.T.: 0.000 min
 Exp R.T.: 6.192 min
 Response: 0
 Conc: N.D.

Instrument :
 ECD_D
 ClientSampleId :



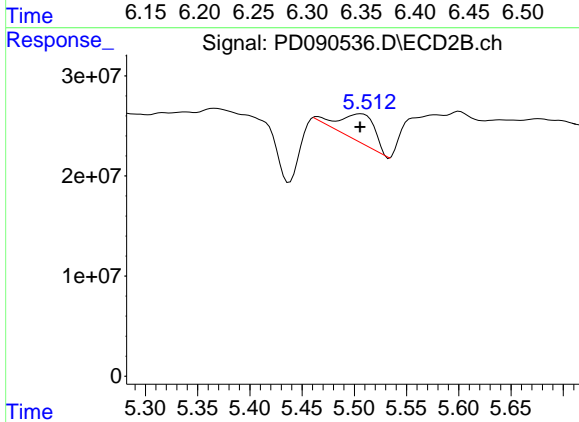
#12 4,4'-DDE

R.T.: 5.366 min
 Delta R.T.: -0.001 min
 Response: 56558195
 Conc: 1.48 ng/ml



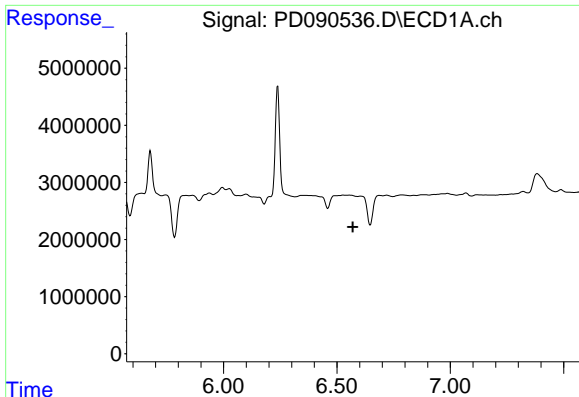
#13 Dieldrin

R.T.: 6.354 min
 Delta R.T.: 0.011 min
 Response: 174148
 Conc: 0.03 ng/ml



#13 Dieldrin

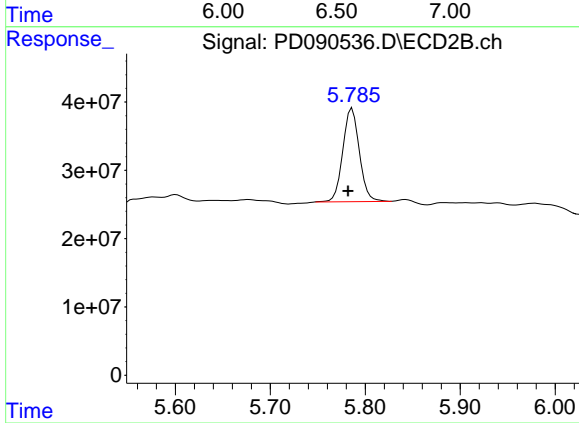
R.T.: 5.506 min
 Delta R.T.: 0.000 min
 Response: 64532424
 Conc: 1.66 ng/ml



#14 Endrin

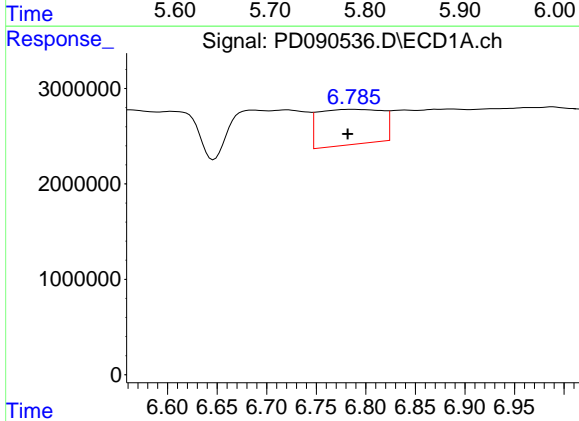
R.T.: 0.000 min
 Exp R.T.: 6.569 min
 Response: 0
 Conc: N.D.

Instrument :
 ECD_D
 ClientSampleId :



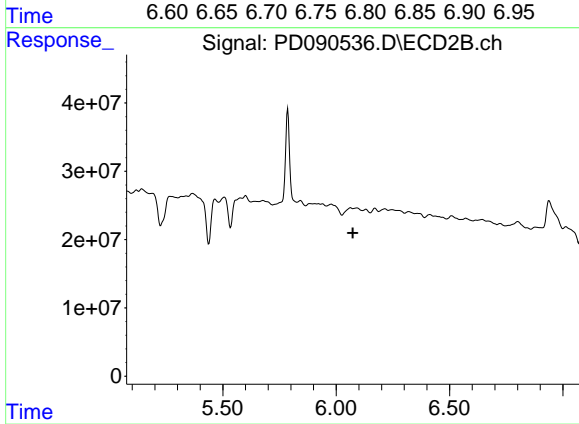
#14 Endrin

R.T.: 5.786 min
 Delta R.T.: 0.004 min
 Response: 166142319
 Conc: 4.64 ng/ml



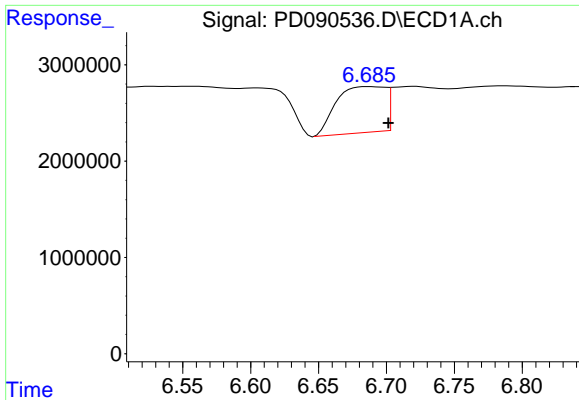
#15 Endosulfan II

R.T.: 6.787 min
 Delta R.T.: 0.005 min
 Response: 16527822
 Conc: 3.39 ng/ml



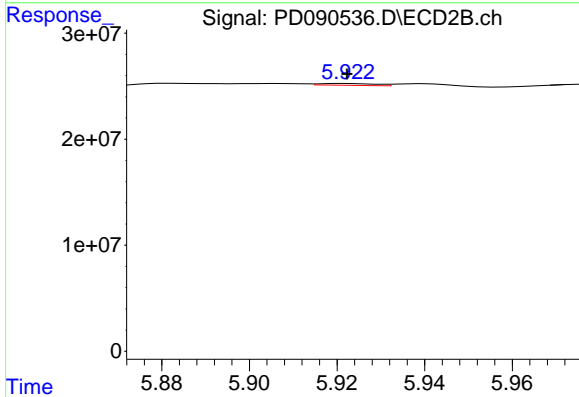
#15 Endosulfan II

R.T.: 6.063 min
 Delta R.T.: -0.010 min
 Response: -14521647
 Conc: N.D.

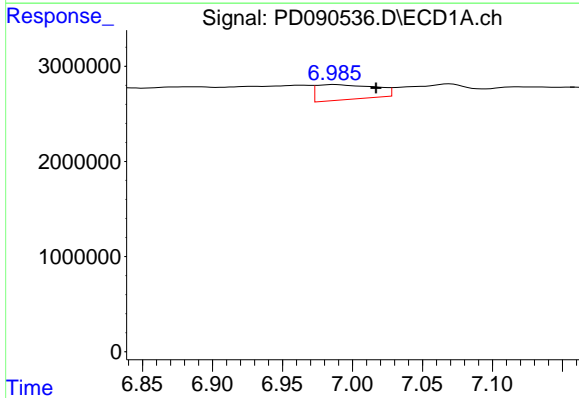


#16 4,4'-DDD
 R.T.: 6.687 min
 Delta R.T.: -0.015 min
 Response: 11933061
 Conc: 2.91 ng/ml

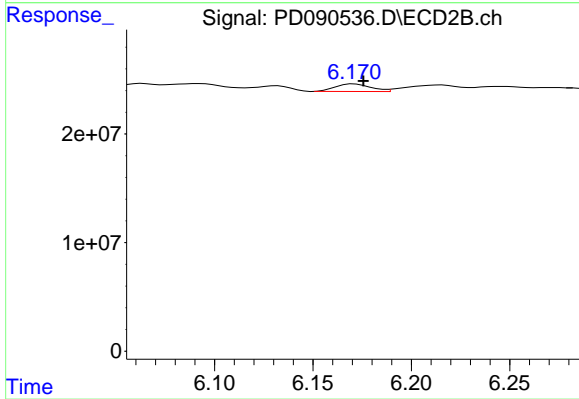
Instrument :
 ECD_D
 ClientSampleId :



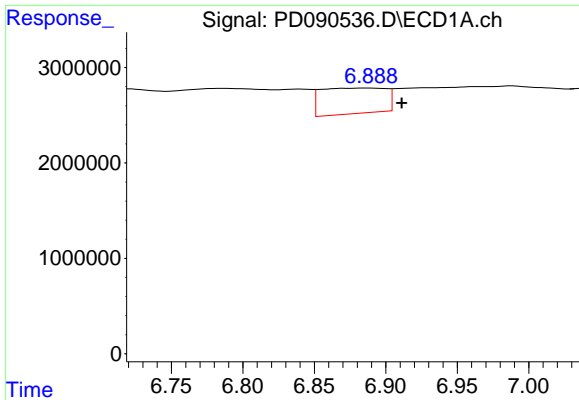
#16 4,4'-DDD
 R.T.: 5.922 min
 Delta R.T.: 0.000 min
 Response: 1546884
 Conc: 0.05 ng/ml



#17 4,4'-DDT
 R.T.: 6.988 min
 Delta R.T.: -0.029 min
 Response: 4563725
 Conc: 1.02 ng/ml



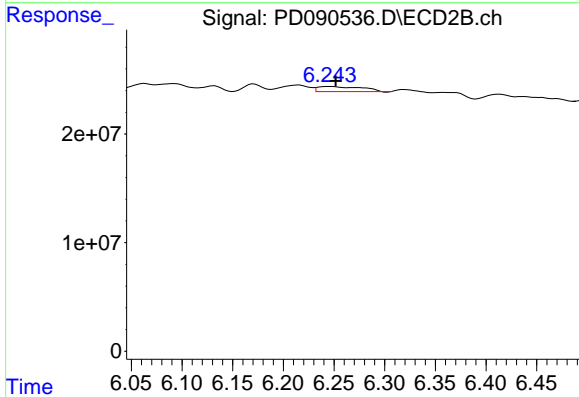
#17 4,4'-DDT
 R.T.: 6.171 min
 Delta R.T.: -0.004 min
 Response: 8710847
 Conc: 0.25 ng/ml



#18 Endrin aldehyde

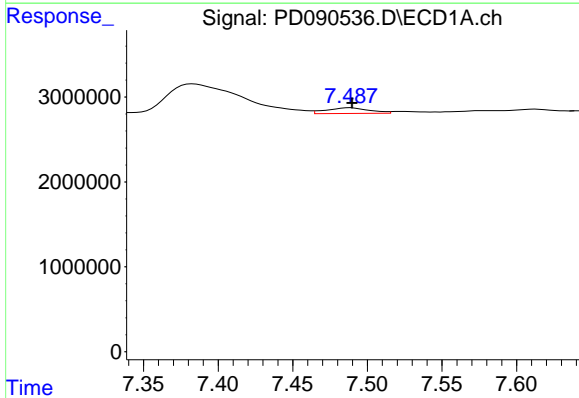
R.T.: 6.888 min
 Delta R.T.: -0.023 min
 Response: 8446606
 Conc: 2.46 ng/ml

Instrument :
 ECD_D
 ClientSampleId :



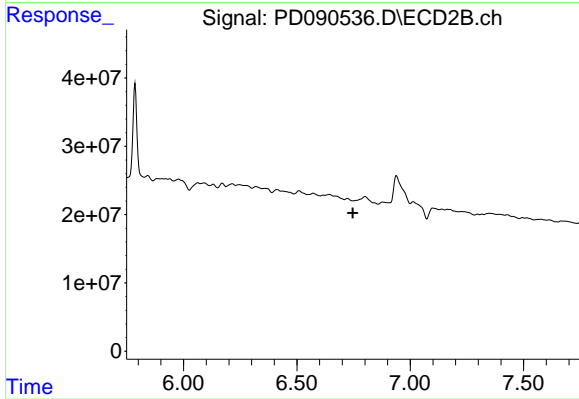
#18 Endrin aldehyde

R.T.: 6.246 min
 Delta R.T.: -0.006 min
 Response: 13164937
 Conc: 0.56 ng/ml



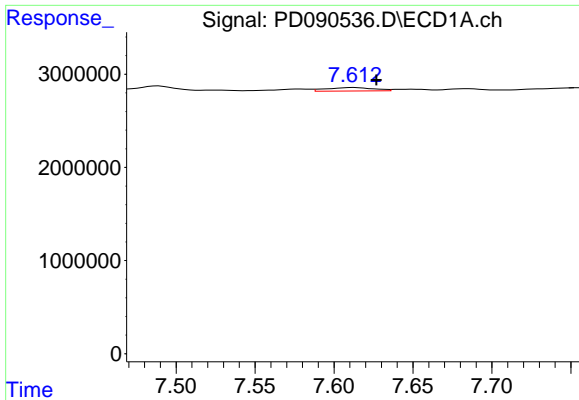
#20 Methoxychlor

R.T.: 7.489 min
 Delta R.T.: 0.000 min
 Response: 1323543
 Conc: 0.56 ng/ml



#20 Methoxychlor

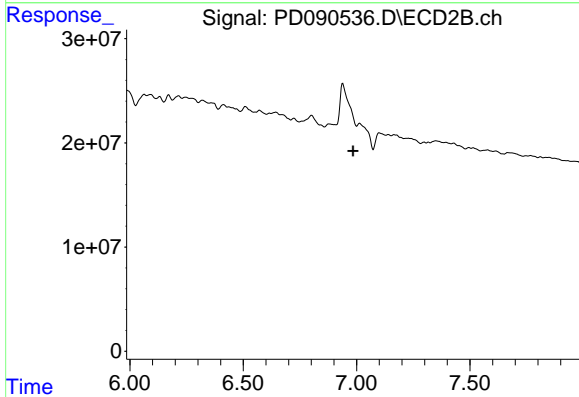
R.T.: 0.000 min
 Exp R.T. : 6.746 min
 Response: 0
 Conc: N.D.



#21 Endrin ketone

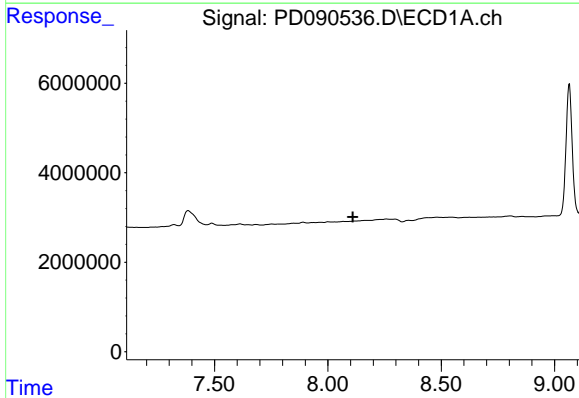
R.T.: 7.613 min
 Delta R.T.: -0.014 min
 Response: 764667
 Conc: 0.15 ng/ml

Instrument :
 ECD_D
 ClientSampleId :



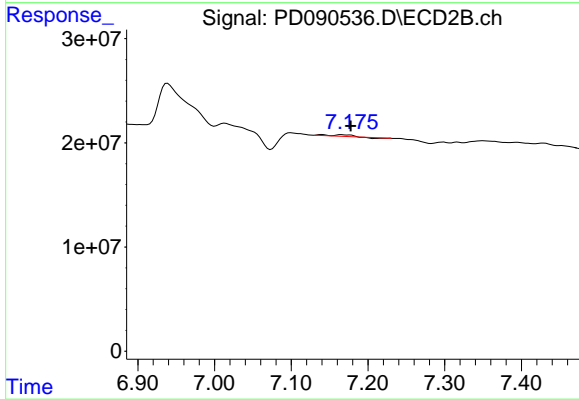
#21 Endrin ketone

R.T.: 7.014 min
 Delta R.T.: 0.030 min
 Response: -16730108
 Conc: N.D.



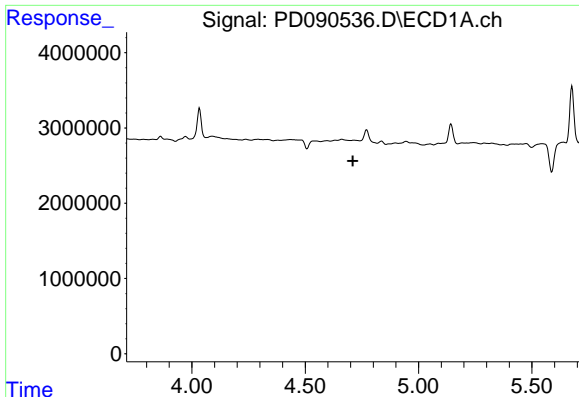
#22 Mirex

R.T.: 0.000 min
 Exp R.T. : 8.109 min
 Response: 0
 Conc: N.D.



#22 Mirex

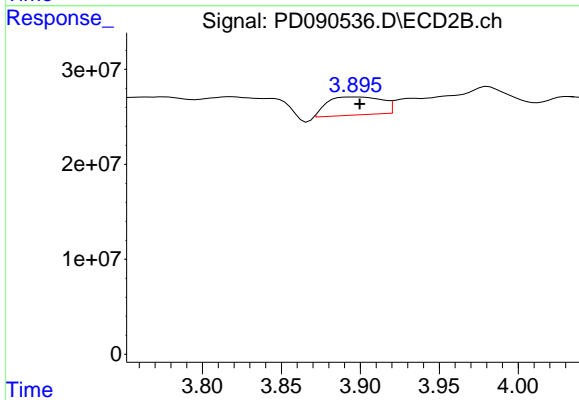
R.T.: 7.167 min
 Delta R.T.: -0.010 min
 Response: 1546871
 Conc: 0.06 ng/ml



#23 Chlordane-1

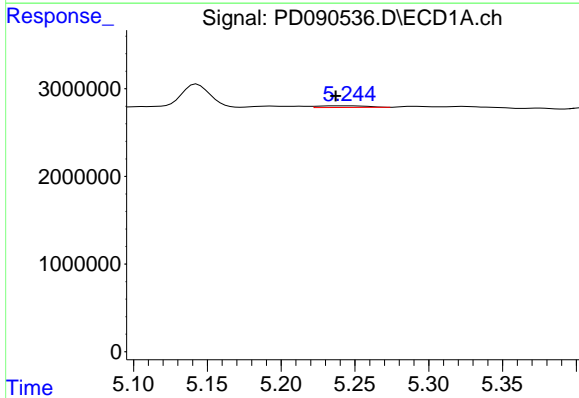
R.T.: 0.000 min
 Exp R.T.: 4.710 min
 Response: 0
 Conc: N.D.

Instrument :
 ECD_D
 ClientSampleId :



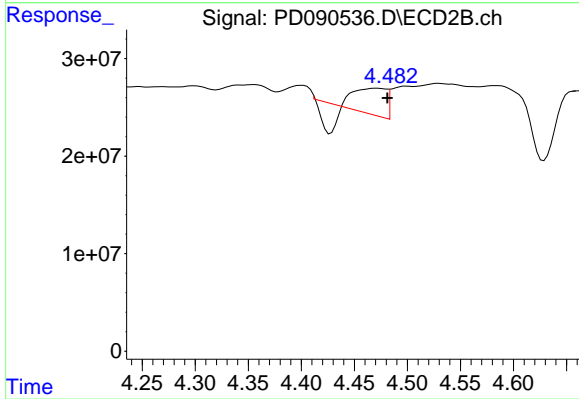
#23 Chlordane-1

R.T.: 3.897 min
 Delta R.T.: -0.002 min
 Response: 45596963
 Conc: 37.89 ng/ml



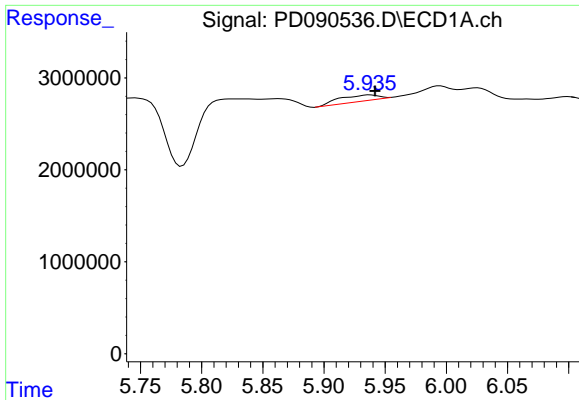
#24 Chlordane-2

R.T.: 5.246 min
 Delta R.T.: 0.009 min
 Response: 418728
 Conc: 1.95 ng/ml



#24 Chlordane-2

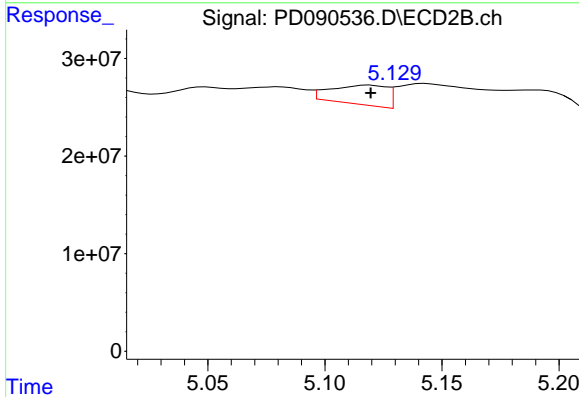
R.T.: 4.471 min
 Delta R.T.: -0.010 min
 Response: 37097574
 Conc: 29.67 ng/ml



#25 Chlordane-3

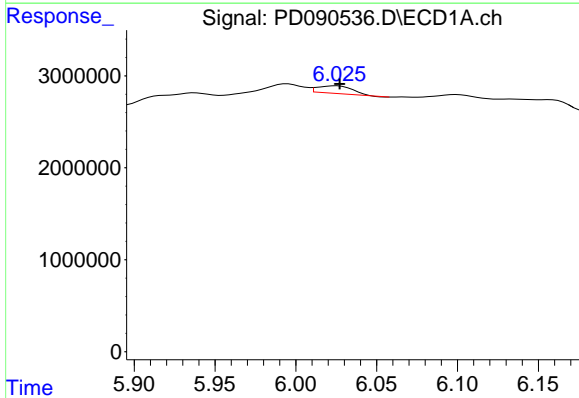
R.T.: 5.937 min
 Delta R.T.: -0.004 min
 Response: 1478716
 Conc: 1.77 ng/ml

Instrument :
 ECD_D
 ClientSampleId :



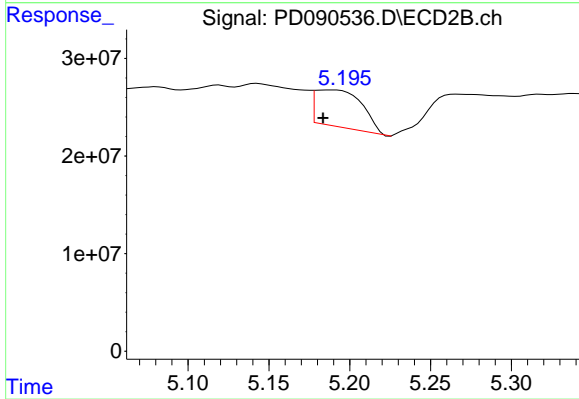
#25 Chlordane-3

R.T.: 5.119 min
 Delta R.T.: 0.000 min
 Response: 33169531
 Conc: 8.75 ng/ml



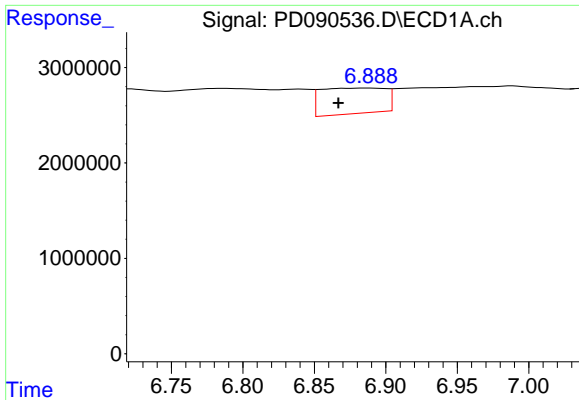
#26 Chlordane-4

R.T.: 6.025 min
 Delta R.T.: -0.002 min
 Response: 1247705
 Conc: 1.22 ng/ml



#26 Chlordane-4

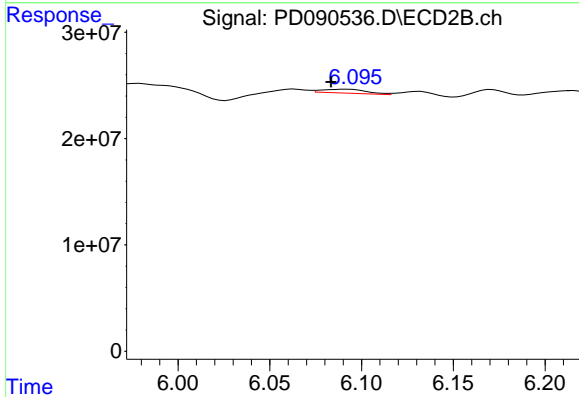
R.T.: 5.190 min
 Delta R.T.: 0.006 min
 Response: 76243919
 Conc: 23.42 ng/ml



#27 Chlordane-5

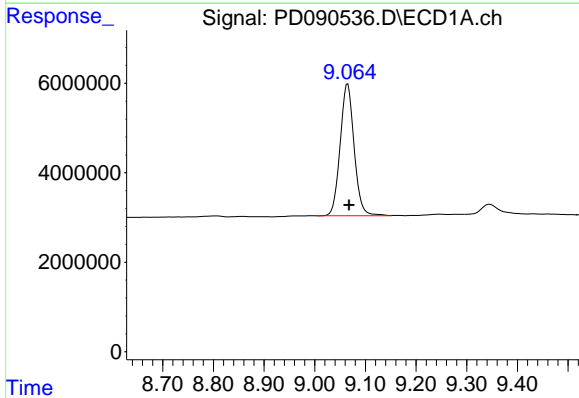
R.T.: 6.888 min
 Delta R.T.: 0.022 min
 Response: 8446606
 Conc: 47.44 ng/ml

Instrument :
 ECD_D
 ClientSampleId :



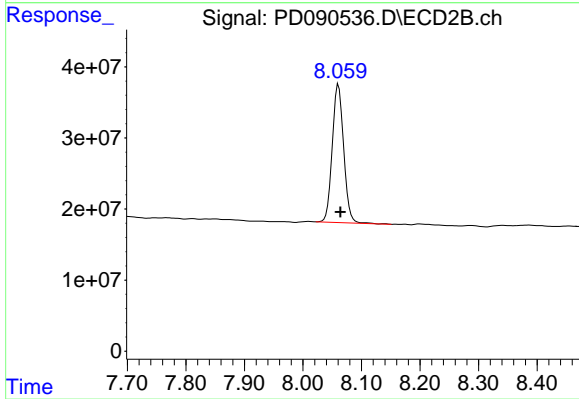
#27 Chlordane-5

R.T.: 6.090 min
 Delta R.T.: 0.007 min
 Response: 6180592
 Conc: 4.07 ng/ml



#28 Decachlorobiphenyl

R.T.: 9.065 min
 Delta R.T.: -0.003 min
 Response: 56346067
 Conc: 11.68 ng/ml



#28 Decachlorobiphenyl

R.T.: 8.061 min
 Delta R.T.: -0.003 min
 Response: 263334524
 Conc: 8.12 ng/ml