

Data Path : Z:\pestpcbsrv\HPCHEM1\ECD_D\Data\PD100820\
 Data File : PD059544.D
 Signal(s) : Signal #1: ECD1A.ch Signal #2: ECD2B.ch
 Acq On : 08 Oct 2020 10:39
 Operator : DD\AJ
 Sample : PSTDICC100
 Misc :
 ALS Vial : 5 Sample Multiplier: 1

Instrument :
 ECD_D
 ClientSampleId :
 PSTDICC100

Integration File signal 1: autoint1.e
 Integration File signal 2: autoint2.e
 Quant Time: Oct 08 12:35:38 2020
 Quant Method : Z:\pestpcbsrv\HPCHEM1\ECD_D\Method\PD100820.M
 Quant Title : GC Extractables
 QLast Update : Thu Oct 08 12:34:38 2020
 Response via : Initial Calibration
 Integrator: ChemStation

Volume Inj. : 2 µl
 Signal #1 Phase : ZB-MR1 Signal #2 Phase: ZB-MR1
 Signal #1 Info : 30M x 0.32mm x0.2 Signal #2 Info : 30M x 0.32mm x 0.50µm

	Compound	RT#1	RT#2	Resp#1	Resp#2	ng/ml	ng/ml

System Monitoring Compounds							
1)	SA Tetrachlo...	3.511	4.025	138.8E6	210.7E6	95.453	96.114
28)	SA Decachlor...	8.316	9.111	102.2E6	151.6E6	93.447	94.371
Target Compounds							
2)	A alpha-BHC	3.953	4.416	226.4E6	336.8E6	97.056	98.302
3)	MA gamma-BHC...	4.240	4.701	206.8E6	309.4E6	96.492	97.603
4)	MA Heptachlor	4.549	5.213	209.9E6	293.3E6	96.177	96.124
5)	MB Aldrin	4.801	5.520	195.7E6	270.4E6	96.648	96.219
6)	B beta-BHC	4.490	4.869	78587530	120.4E6	93.027	93.777
7)	B delta-BHC	4.699	5.088	194.5E6	277.8E6	96.422	96.157
8)	B Heptachlo...	5.248	5.907	171.0E6	246.6E6	95.452	95.198
9)	A Endosulfan I	5.591	6.265	155.6E6	225.9E6	95.223	95.780
10)	B gamma-Chl...	5.477	6.141	173.2E6	246.8E6	96.035	96.431
11)	B alpha-Chl...	5.537	6.214	169.7E6	245.4E6	95.637	95.803
12)	B 4,4'-DDE	5.701	6.369	166.0E6	236.6E6	96.486	97.410
13)	MA Dieldrin	5.836	6.522	168.7E6	243.6E6	96.534	96.570
14)	MA Endrin	6.096	6.741	144.0E6	208.8E6	96.015	96.956
15)	B Endosulfa...	6.370	6.948	138.6E6	201.9E6	95.071	95.067
16)	A 4,4'-DDD	6.221	6.859	133.6E6	194.3E6	95.751	96.165
17)	MA 4,4'-DDT	6.465	7.159	144.8E6	193.9E6	96.613	97.200
18)	B Endrin al...	6.539	7.072	113.2E6	167.7E6	94.301	94.268
19)	B Endosulfa...	6.754	7.295	121.1E6	187.1E6	93.698	94.169
20)	A Methoxychlor	7.014	7.616	69659090	99030361	92.605	93.964
21)	B Endrin ke...	7.249	7.768	141.0E6	204.8E6	93.858	94.760
22)	Mirex	7.445	8.224	99482824	132.0E6	89.101	93.100

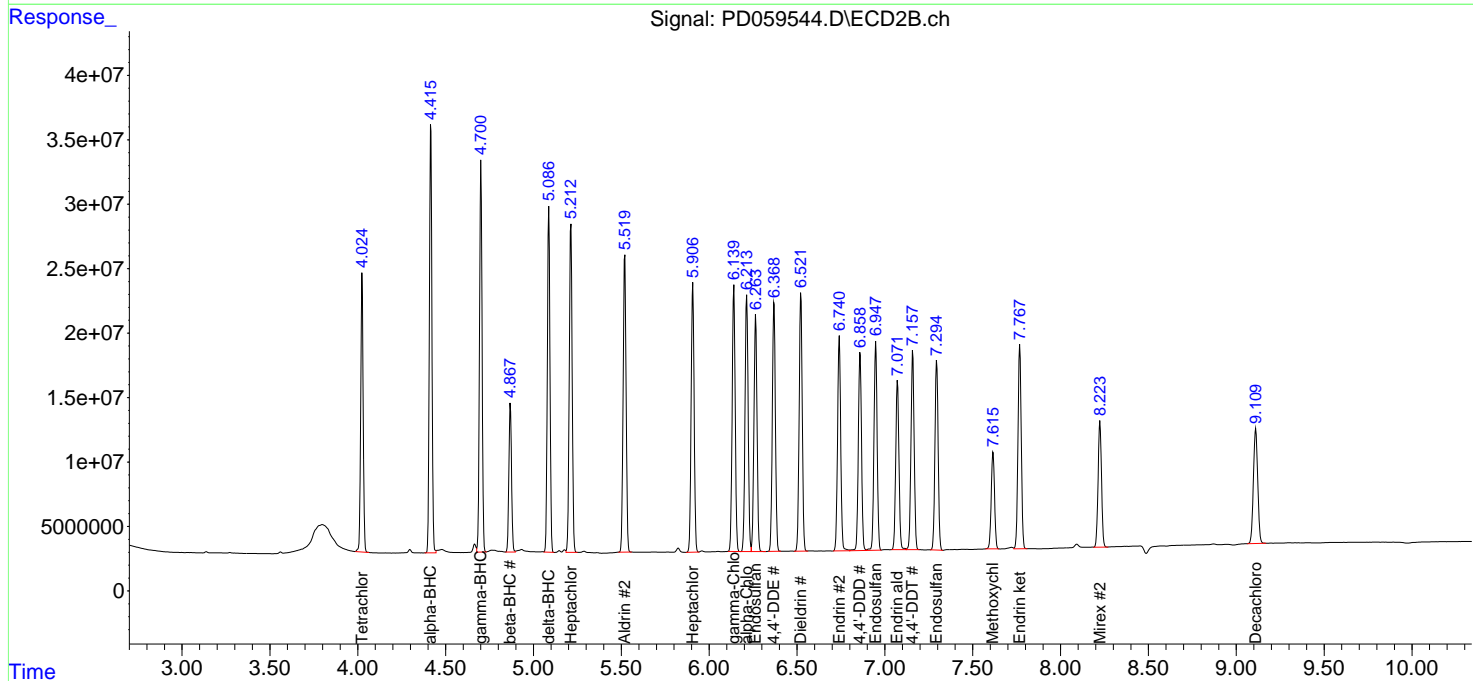
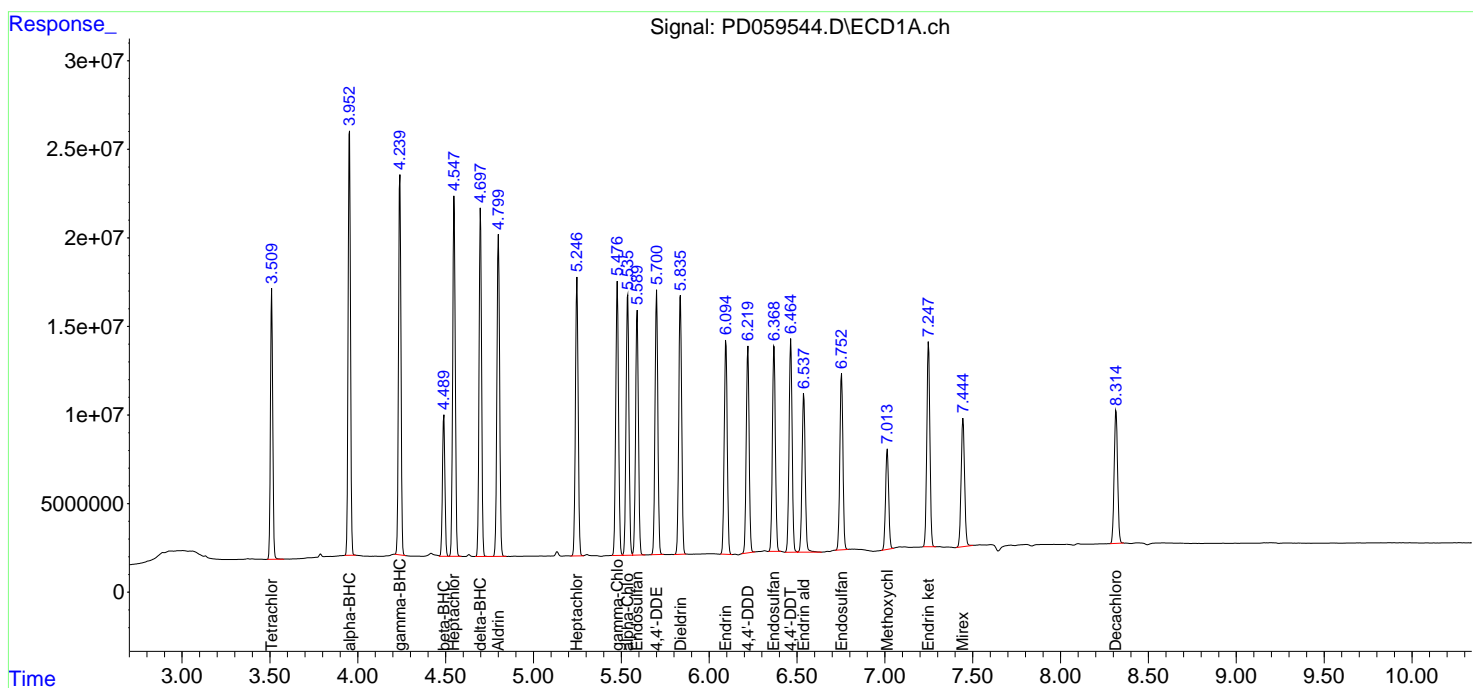
(f)=RT Delta > 1/2 Window (#)=Amounts differ by > 25% (m)=manual int.

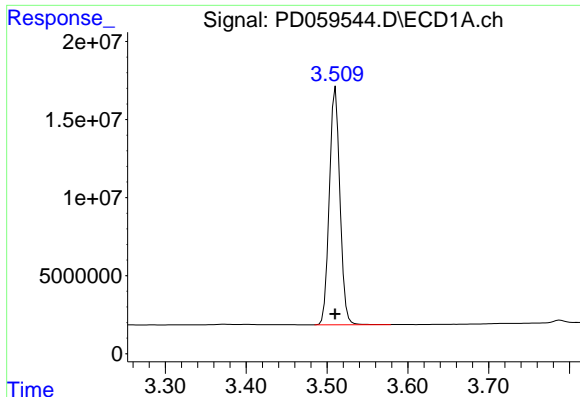
Data Path : Z:\pestpcbsrv\HPCHEM1\ECD_D\Data\PD100820\
 Data File : PD059544.D
 Signal(s) : Signal #1: ECD1A.ch Signal #2: ECD2B.ch
 Acq On : 08 Oct 2020 10:39
 Operator : DD\AJ
 Sample : PSTDICC100
 Misc :
 ALS Vial : 5 Sample Multiplier: 1

Instrument :
 ECD_D
 ClientSampled :
 PSTDICC100

Integration File signal 1: autoint1.e
 Integration File signal 2: autoint2.e
 Quant Time: Oct 08 12:35:38 2020
 Quant Method : Z:\pestpcbsrv\HPCHEM1\ECD_D\Method\PD100820.M
 Quant Title : GC Extractables
 QLast Update : Thu Oct 08 12:34:38 2020
 Response via : Initial Calibration
 Integrator: ChemStation

Volume Inj. : 2 µl
 Signal #1 Phase : ZB-MR2 Signal #2 Phase: ZB-MR1
 Signal #1 Info : 30M x 0.32mm x0.2 Signal #2 Info : 30M x 0.32mm x 0.50µm

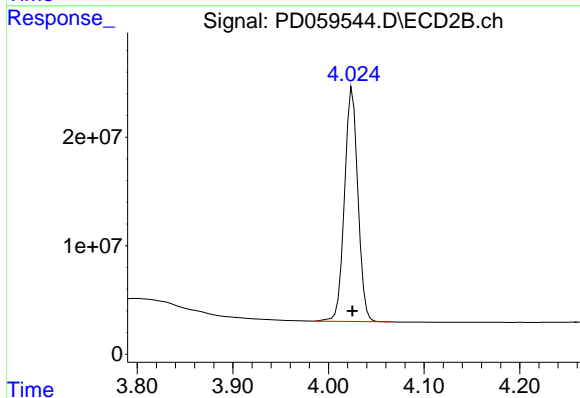




#1 Tetrachloro-m-xylene

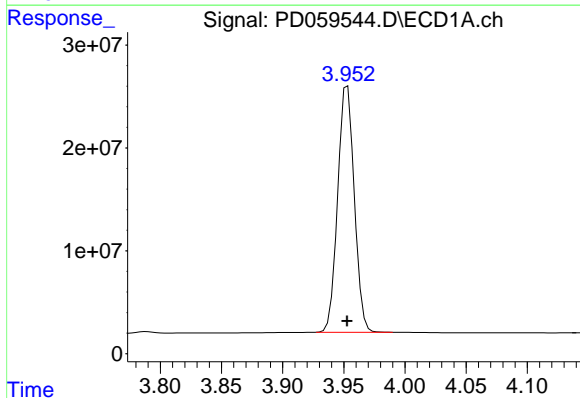
R.T.: 3.511 min
 Delta R.T.: 0.000 min
 Response: 138754885
 Conc: 95.45 ng/ml

Instrument :
 ECD_D
 ClientSampleId :
 PSTDICC100



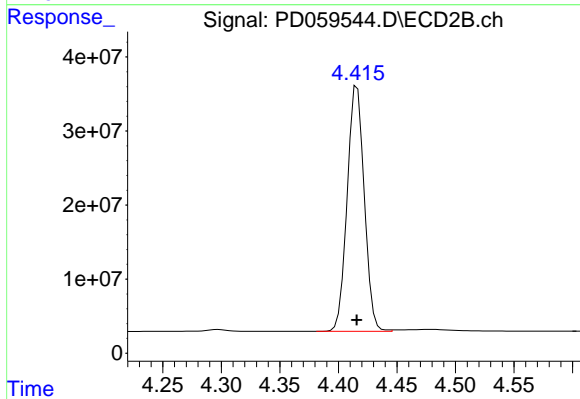
#1 Tetrachloro-m-xylene

R.T.: 4.025 min
 Delta R.T.: 0.000 min
 Response: 210666613
 Conc: 96.11 ng/ml



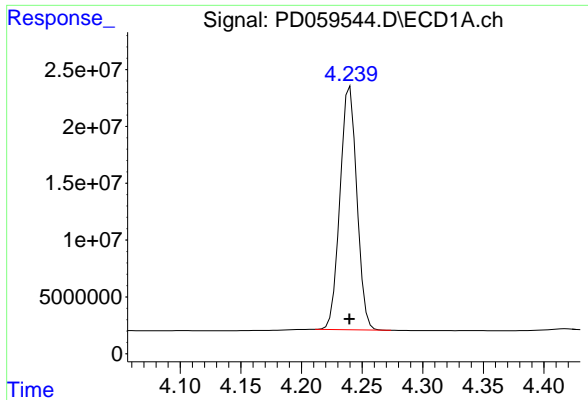
#2 alpha-BHC

R.T.: 3.953 min
 Delta R.T.: 0.000 min
 Response: 226416054
 Conc: 97.06 ng/ml



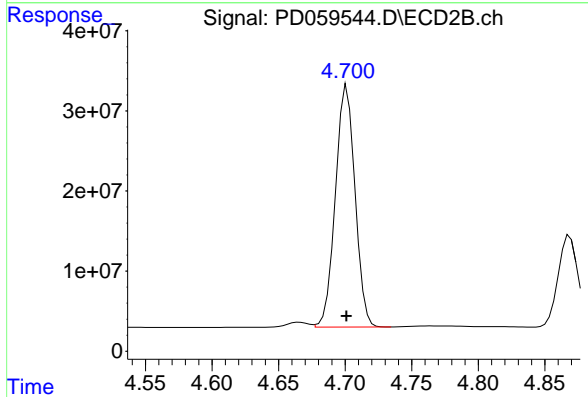
#2 alpha-BHC

R.T.: 4.416 min
 Delta R.T.: 0.000 min
 Response: 336826830
 Conc: 98.30 ng/ml

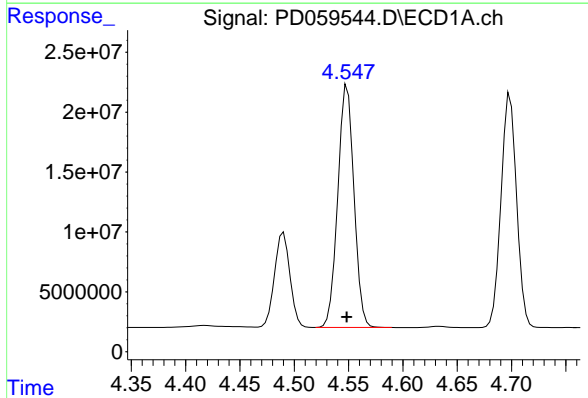


#3 gamma-BHC (Lindane)
 R.T.: 4.240 min
 Delta R.T.: 0.000 min
 Response: 206775527
 Conc: 96.49 ng/ml

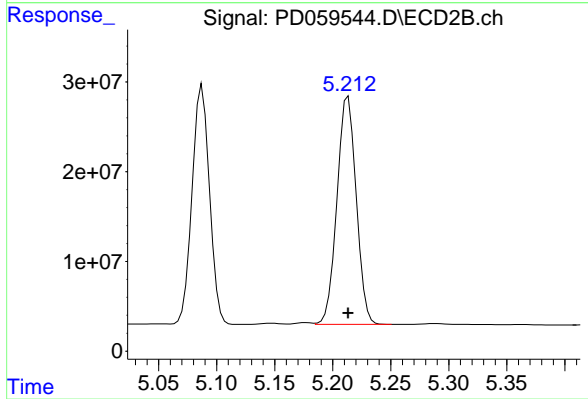
Instrument :
 ECD_D
 ClientSampleId :
 PSTDICC100



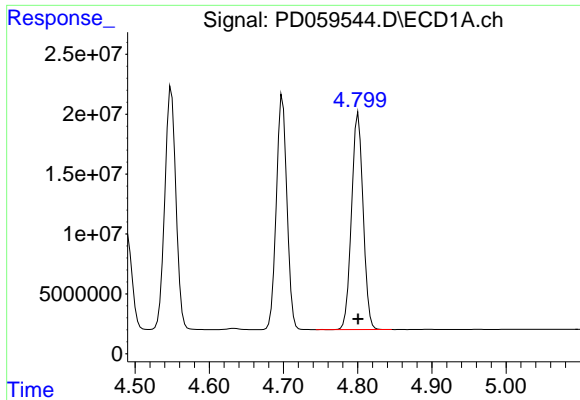
#3 gamma-BHC (Lindane)
 R.T.: 4.701 min
 Delta R.T.: 0.000 min
 Response: 309417357
 Conc: 97.60 ng/ml



#4 Heptachlor
 R.T.: 4.549 min
 Delta R.T.: 0.000 min
 Response: 209943898
 Conc: 96.18 ng/ml

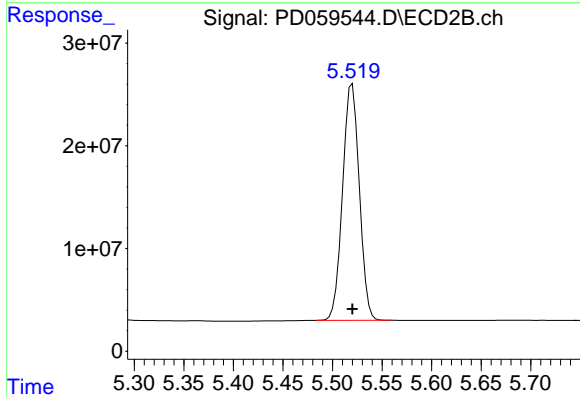


#4 Heptachlor
 R.T.: 5.213 min
 Delta R.T.: 0.000 min
 Response: 293316208
 Conc: 96.12 ng/ml

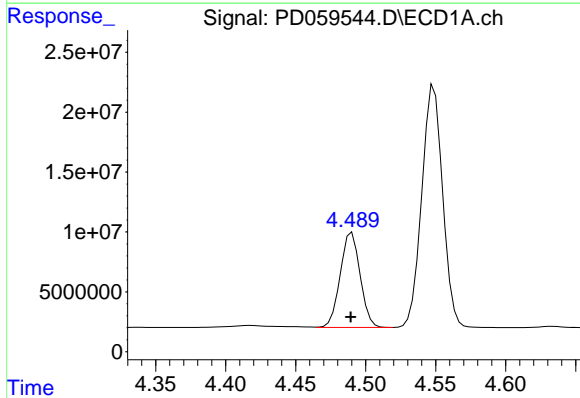


#5 Aldrin
 R.T.: 4.801 min
 Delta R.T.: 0.000 min
 Response: 195669290
 Conc: 96.65 ng/ml

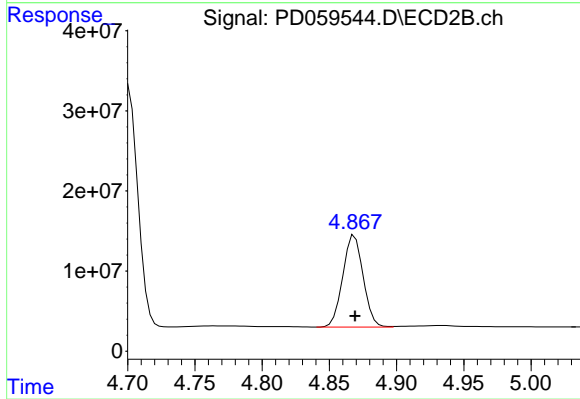
Instrument :
 ECD_D
 ClientSampleId :
 PSTDICC100



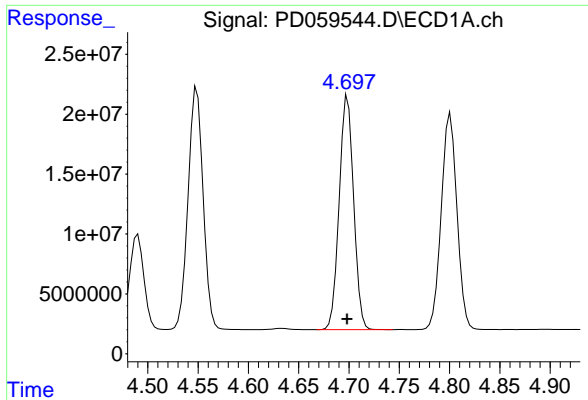
#5 Aldrin
 R.T.: 5.520 min
 Delta R.T.: 0.000 min
 Response: 270378715
 Conc: 96.22 ng/ml



#6 beta-BHC
 R.T.: 4.490 min
 Delta R.T.: 0.000 min
 Response: 78587530
 Conc: 93.03 ng/ml



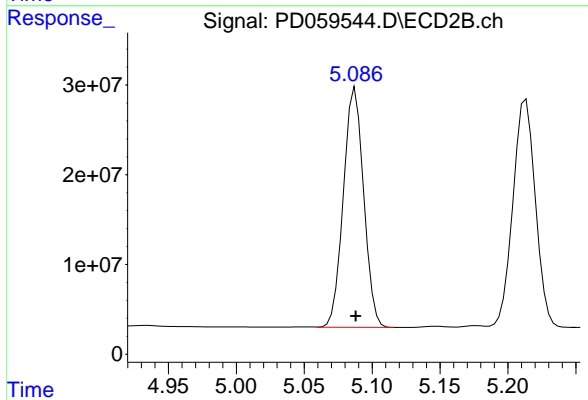
#6 beta-BHC
 R.T.: 4.869 min
 Delta R.T.: 0.000 min
 Response: 120411939
 Conc: 93.78 ng/ml



#7 delta-BHC

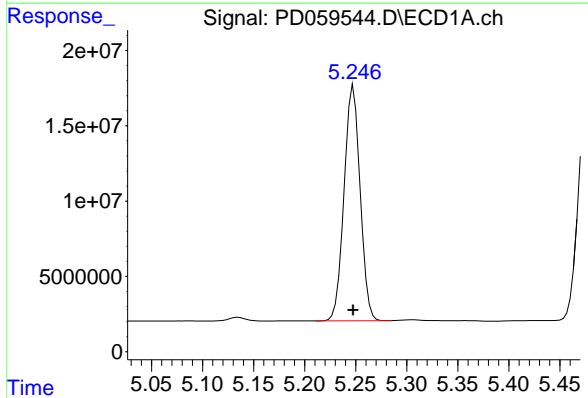
R.T.: 4.699 min
Delta R.T.: 0.000 min
Response: 194544582
Conc: 96.42 ng/ml

Instrument :
ECD_D
ClientSampleId :
PSTDICC100



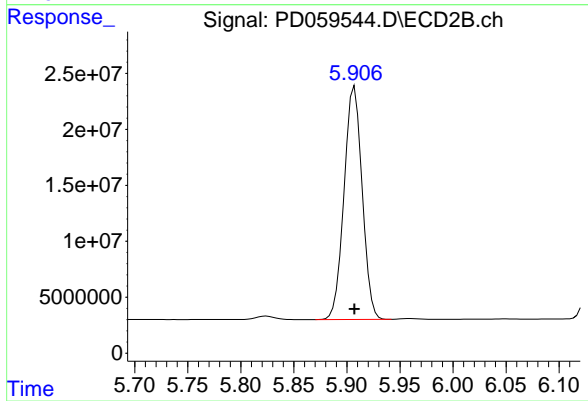
#7 delta-BHC

R.T.: 5.088 min
Delta R.T.: 0.000 min
Response: 277818392
Conc: 96.16 ng/ml



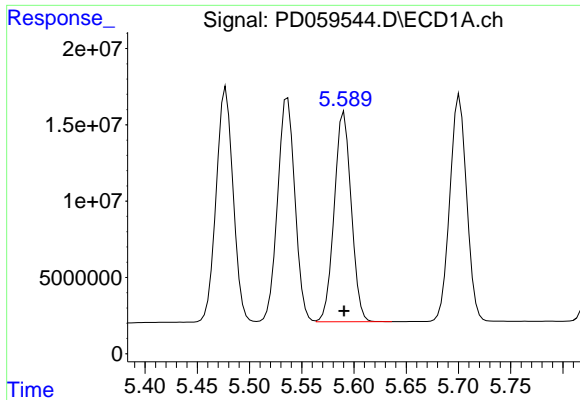
#8 Heptachlor epoxide

R.T.: 5.248 min
Delta R.T.: 0.000 min
Response: 170982665
Conc: 95.45 ng/ml



#8 Heptachlor epoxide

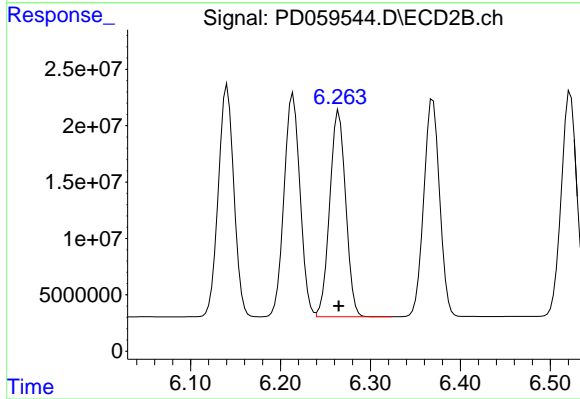
R.T.: 5.907 min
Delta R.T.: 0.000 min
Response: 246629461
Conc: 95.20 ng/ml



#9 Endosulfan I

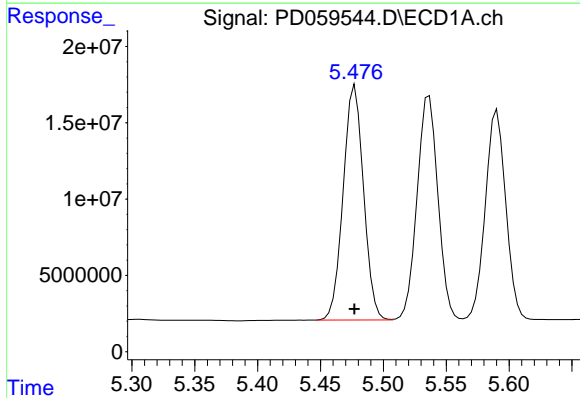
R.T.: 5.591 min
 Delta R.T.: 0.000 min
 Response: 155643322
 Conc: 95.22 ng/ml

Instrument :
 ECD_D
 ClientSampleId :
 PSTDICC100



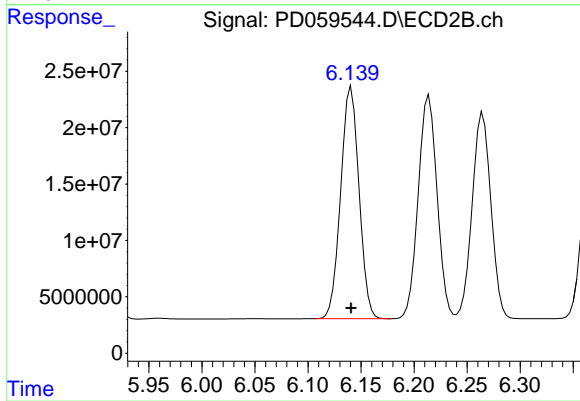
#9 Endosulfan I

R.T.: 6.265 min
 Delta R.T.: 0.000 min
 Response: 225892469
 Conc: 95.78 ng/ml



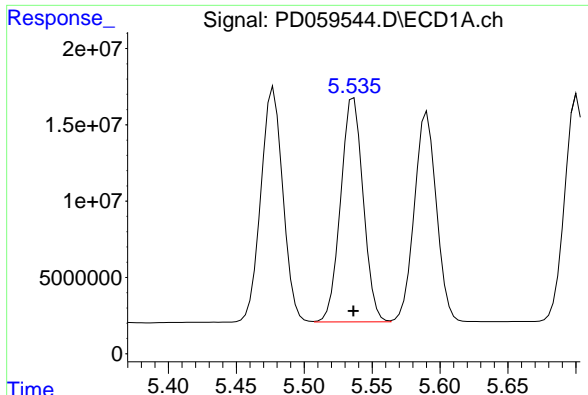
#10 gamma-Chlordane

R.T.: 5.477 min
 Delta R.T.: 0.000 min
 Response: 173225972
 Conc: 96.04 ng/ml



#10 gamma-Chlordane

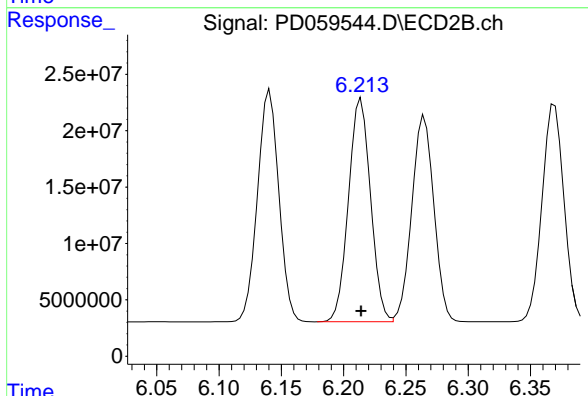
R.T.: 6.141 min
 Delta R.T.: 0.000 min
 Response: 246773601
 Conc: 96.43 ng/ml



#11 alpha-Chlordane

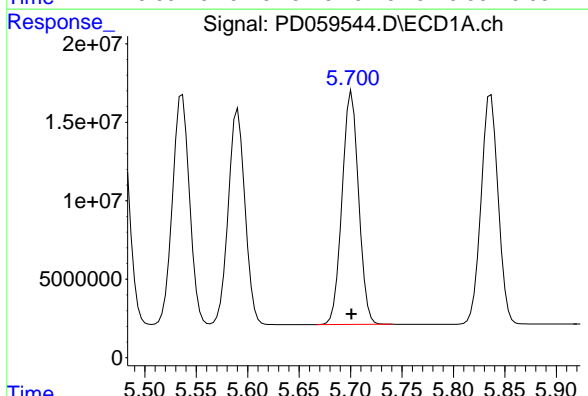
R.T.: 5.537 min
Delta R.T.: 0.000 min
Response: 169699334
Conc: 95.64 ng/ml

Instrument :
ECD_D
ClientSampleId :
PSTDICC100



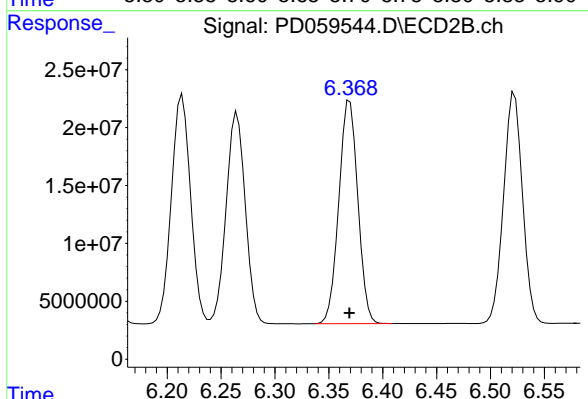
#11 alpha-Chlordane

R.T.: 6.214 min
Delta R.T.: 0.000 min
Response: 245378583
Conc: 95.80 ng/ml



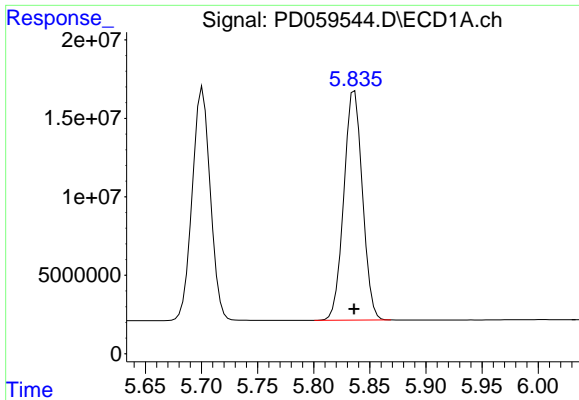
#12 4,4'-DDE

R.T.: 5.701 min
Delta R.T.: 0.000 min
Response: 166032146
Conc: 96.49 ng/ml



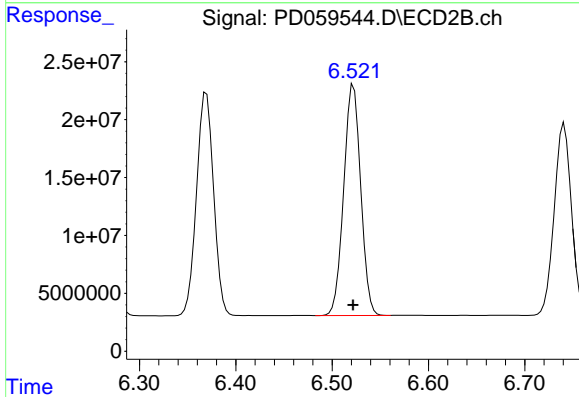
#12 4,4'-DDE

R.T.: 6.369 min
Delta R.T.: 0.000 min
Response: 236628326
Conc: 97.41 ng/ml

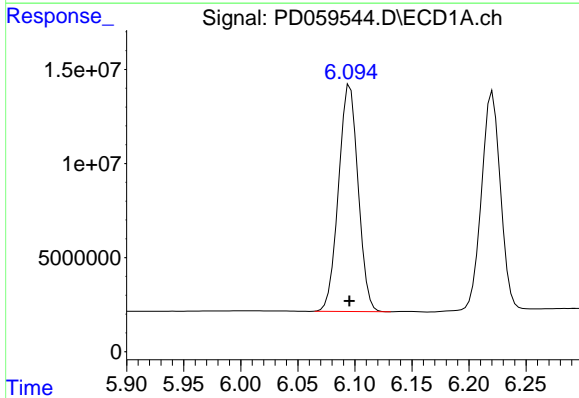


#13 Dieldrin
 R.T.: 5.836 min
 Delta R.T.: 0.000 min
 Response: 168746380
 Conc: 96.53 ng/ml

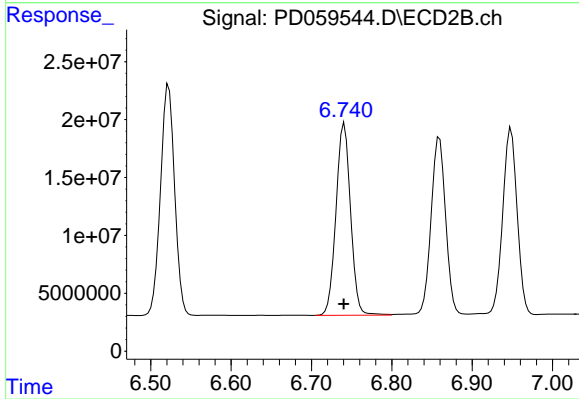
Instrument :
 ECD_D
 ClientSampleId :
 PSTDICC100



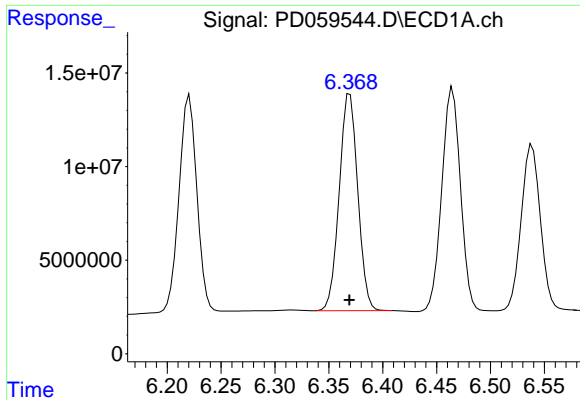
#13 Dieldrin
 R.T.: 6.522 min
 Delta R.T.: 0.000 min
 Response: 243633715
 Conc: 96.57 ng/ml



#14 Endrin
 R.T.: 6.096 min
 Delta R.T.: 0.000 min
 Response: 144019108
 Conc: 96.01 ng/ml



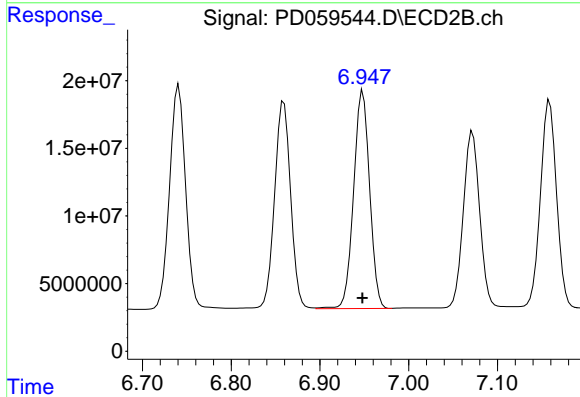
#14 Endrin
 R.T.: 6.741 min
 Delta R.T.: 0.000 min
 Response: 208818674
 Conc: 96.96 ng/ml



#15 Endosulfan II

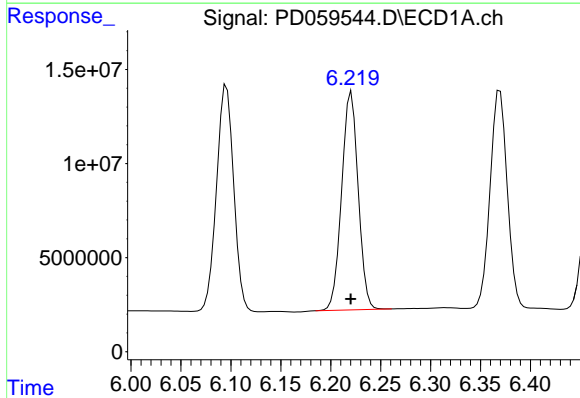
R.T.: 6.370 min
 Delta R.T.: 0.000 min
 Response: 138625745
 Conc: 95.07 ng/ml

Instrument :
 ECD_D
 ClientSampleId :
 PSTDICC100



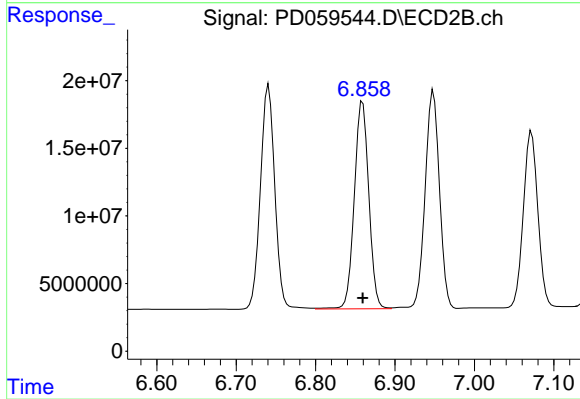
#15 Endosulfan II

R.T.: 6.948 min
 Delta R.T.: 0.000 min
 Response: 201916253
 Conc: 95.07 ng/ml



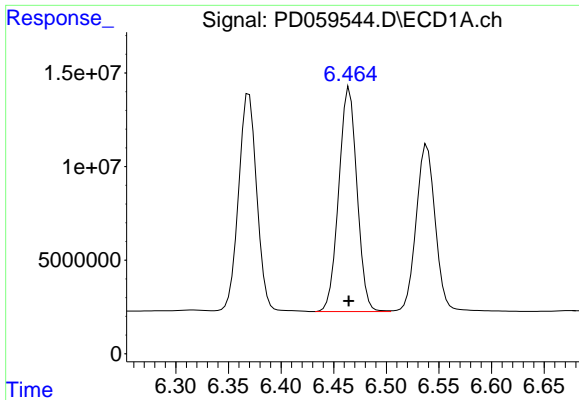
#16 4,4'-DDD

R.T.: 6.221 min
 Delta R.T.: 0.000 min
 Response: 133638247
 Conc: 95.75 ng/ml



#16 4,4'-DDD

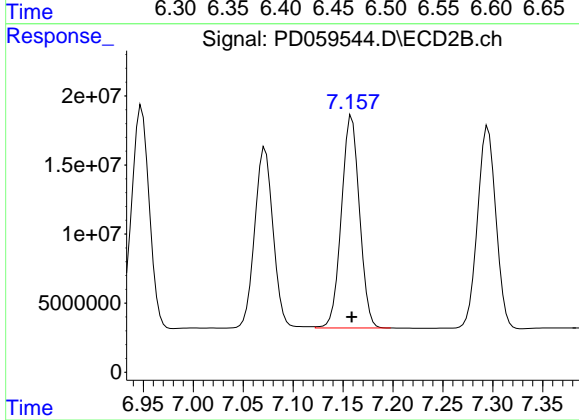
R.T.: 6.859 min
 Delta R.T.: 0.000 min
 Response: 194340361
 Conc: 96.17 ng/ml



#17 4,4'-DDT

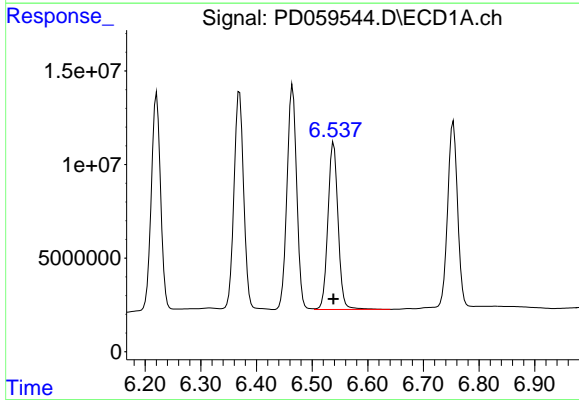
R.T.: 6.465 min
 Delta R.T.: 0.000 min
 Response: 144754328
 Conc: 96.61 ng/ml

Instrument :
 ECD_D
 ClientSampleId :
 PSTDICC100



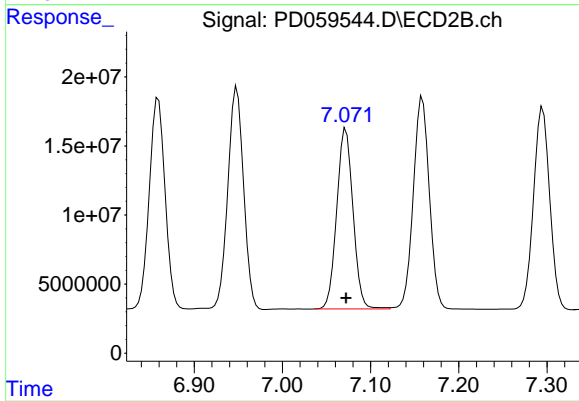
#17 4,4'-DDT

R.T.: 7.159 min
 Delta R.T.: 0.000 min
 Response: 193905127
 Conc: 97.20 ng/ml



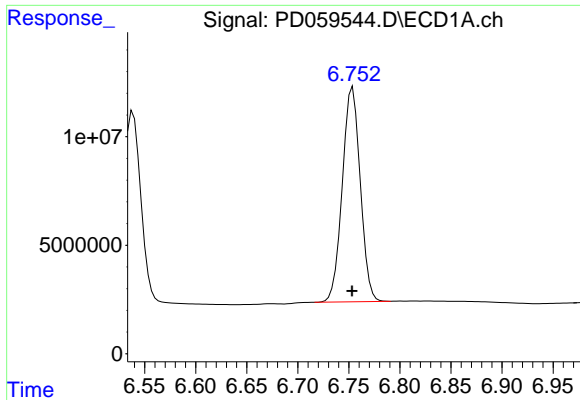
#18 Endrin aldehyde

R.T.: 6.539 min
 Delta R.T.: 0.000 min
 Response: 113161992
 Conc: 94.30 ng/ml



#18 Endrin aldehyde

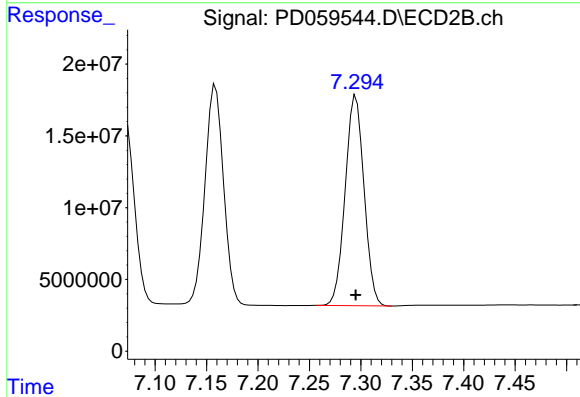
R.T.: 7.072 min
 Delta R.T.: 0.000 min
 Response: 167727919
 Conc: 94.27 ng/ml



#19 Endosulfan Sulfate

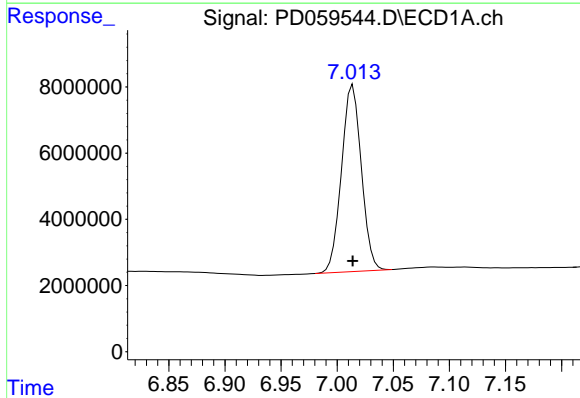
R.T.: 6.754 min
 Delta R.T.: 0.000 min
 Response: 121092273
 Conc: 93.70 ng/ml

Instrument :
 ECD_D
 ClientSampleId :
 PSTDICC100



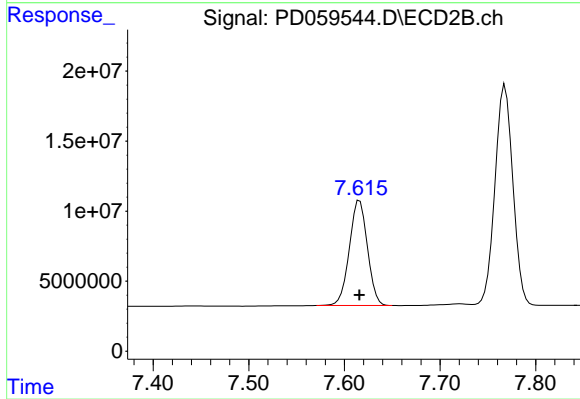
#19 Endosulfan Sulfate

R.T.: 7.295 min
 Delta R.T.: 0.000 min
 Response: 187051791
 Conc: 94.17 ng/ml



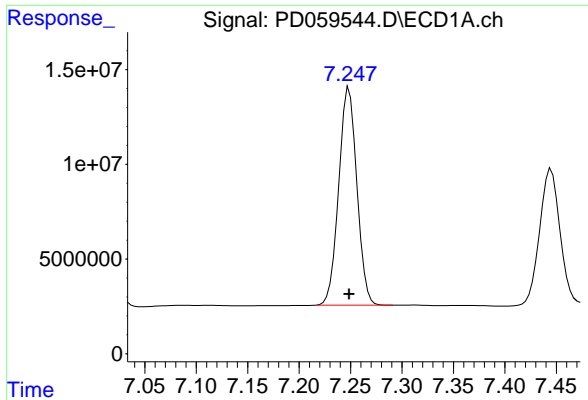
#20 Methoxychlor

R.T.: 7.014 min
 Delta R.T.: 0.000 min
 Response: 69659090
 Conc: 92.61 ng/ml



#20 Methoxychlor

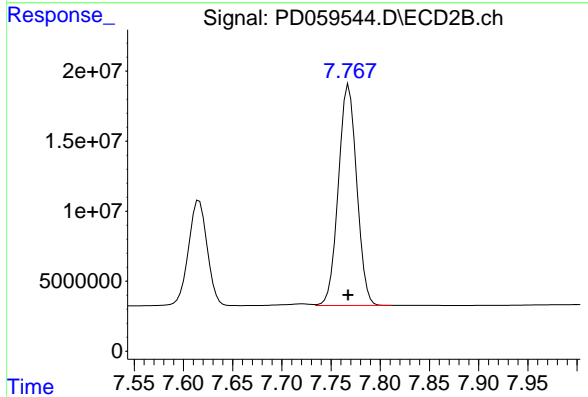
R.T.: 7.616 min
 Delta R.T.: 0.000 min
 Response: 99030361
 Conc: 93.96 ng/ml



#21 Endrin ketone

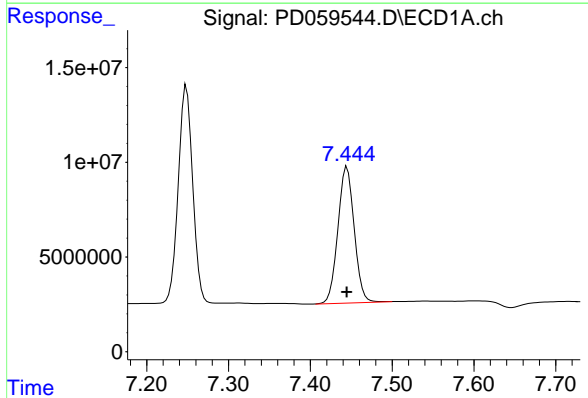
R.T.: 7.249 min
 Delta R.T.: 0.000 min
 Response: 140982038
 Conc: 93.86 ng/ml

Instrument :
 ECD_D
 ClientSampleId :
 PSTDICC100



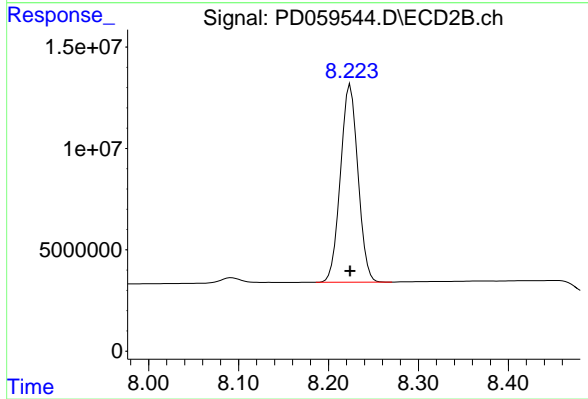
#21 Endrin ketone

R.T.: 7.768 min
 Delta R.T.: 0.000 min
 Response: 204771152
 Conc: 94.76 ng/ml



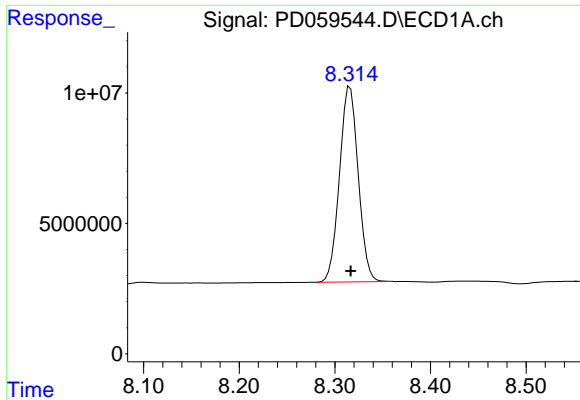
#22 Mirex

R.T.: 7.445 min
 Delta R.T.: 0.000 min
 Response: 99482824
 Conc: 89.10 ng/ml



#22 Mirex

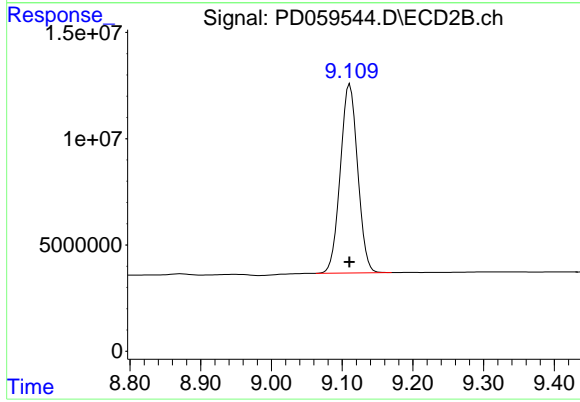
R.T.: 8.224 min
 Delta R.T.: 0.000 min
 Response: 131957997
 Conc: 93.10 ng/ml



#28 Decachlorobiphenyl

R.T.: 8.316 min
Delta R.T.: 0.000 min
Response: 102154538
Conc: 93.45 ng/ml

Instrument :
ECD_D
ClientSampled :
PSTDICC100



#28 Decachlorobiphenyl

R.T.: 9.111 min
Delta R.T.: 0.000 min
Response: 151630715
Conc: 94.37 ng/ml