

Data Path : Z:\pestpcbsrv\HPCHEM1\ECD_D\Data\PD100821\
 Data File : PD066108.D
 Signal(s) : Signal #1: ECD1A.ch Signal #2: ECD2B.ch
 Acq On : 08 Oct 2021 12:20
 Operator : AR\AJ
 Sample : M4117-17DL 20X
 Misc :
 ALS Vial : 11 Sample Multiplier: 1

Instrument :
 ECD_D
 ClientSampleID :
 SB-5(3.0-3.5)DL

Integration File signal 1: autoint1.e
 Integration File signal 2: autoint2.e
 Quant Time: Oct 09 01:19:13 2021
 Quant Method : Z:\pestpcbsrv\HPCHEM1\ECD_D\Method\PD092221.M
 Quant Title : GC Extractables
 QLast Update : Thu Sep 23 12:18:33 2021
 Response via : Initial Calibration
 Integrator: ChemStation

Volume Inj. : 2 µl
 Signal #1 Phase : ZB-MR2 Signal #2 Phase: ZB-MR1
 Signal #1 Info : 30M x 0.32mm x0.2 Signal #2 Info : 30M x 0.32mm x 0.50µm

Compound	RT#1	RT#2	Resp#1	Resp#2	ng/ml	ng/ml
----------	------	------	--------	--------	-------	-------

System Monitoring Compounds

Target Compounds

12) B	4,4'-DDE	5.646	6.354	115.0E6	539.1E6	105.658	93.467
16) A	4,4'-DDD	6.161	6.848	771776	6108904	0.787	1.243 #
17) MA	4,4'-DDT	6.401	7.145	21756917	104.8E6	19.766	20.740

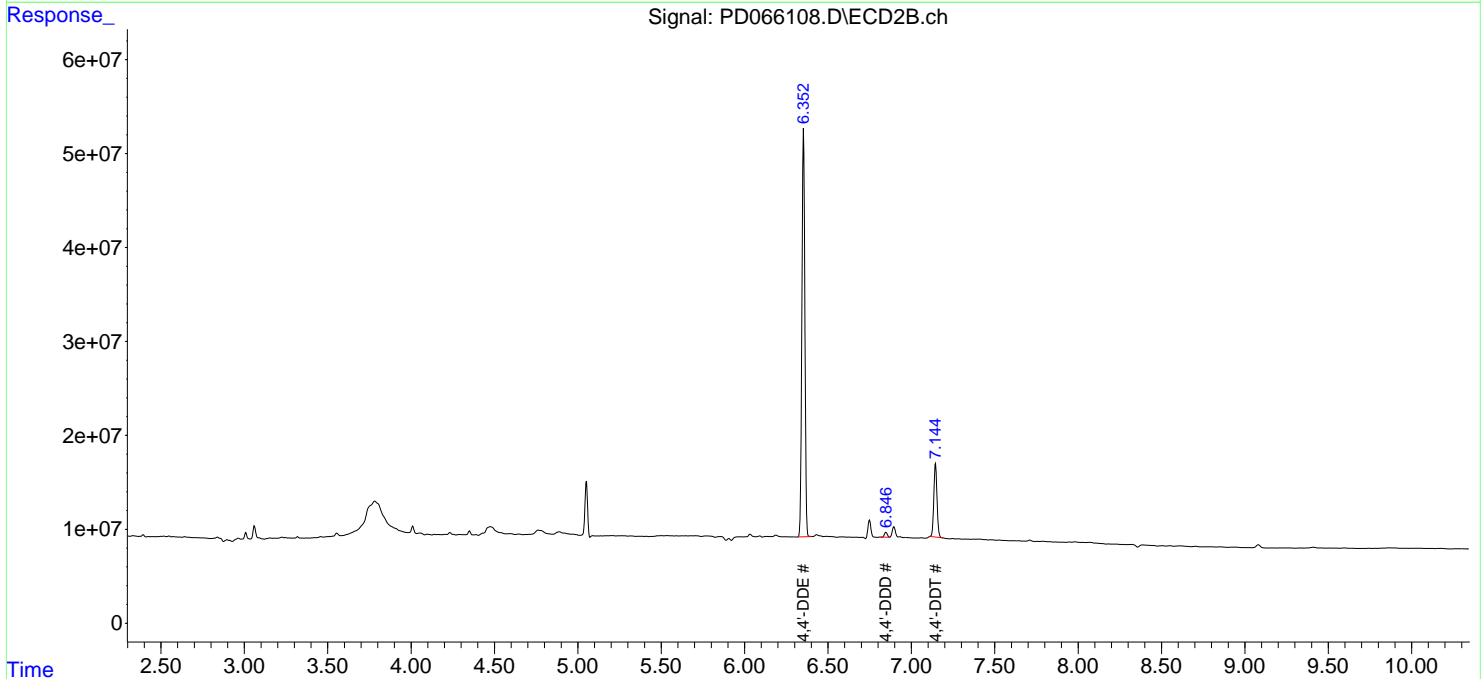
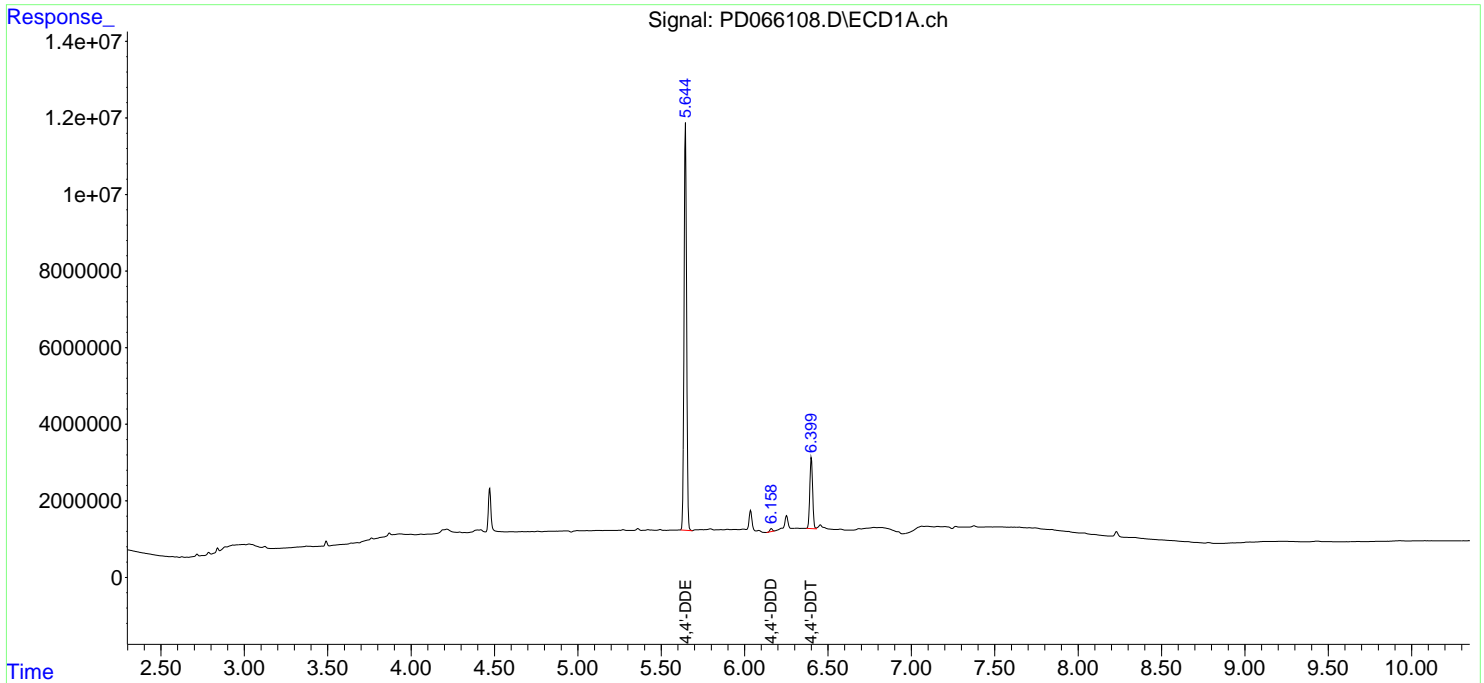
(f)=RT Delta > 1/2 Window (#)=Amounts differ by > 25% (m)=manual int.

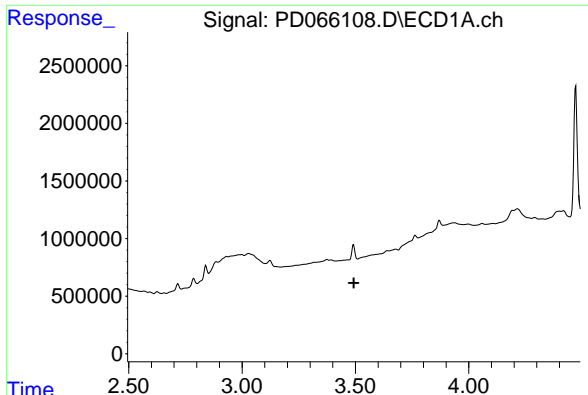
Data Path : Z:\pestpcbsrv\HPCHEM1\ECD_D\Data\PD100821\
 Data File : PD066108.D
 Signal(s) : Signal #1: ECD1A.ch Signal #2: ECD2B.ch
 Acq On : 08 Oct 2021 12:20
 Operator : AR\AJ
 Sample : M4117-17DL 20X
 Misc :
 ALS Vial : 11 Sample Multiplier: 1

Instrument :
 ECD_D
 ClientSampleID :
 SB-5(3.0-3.5)DL

Integration File signal 1: autoint1.e
 Integration File signal 2: autoint2.e
 Quant Time: Oct 09 01:19:13 2021
 Quant Method : Z:\pestpcbsrv\HPCHEM1\ECD_D\Method\PD092221.M
 Quant Title : GC Extractables
 QLast Update : Thu Sep 23 12:18:33 2021
 Response via : Initial Calibration
 Integrator: ChemStation

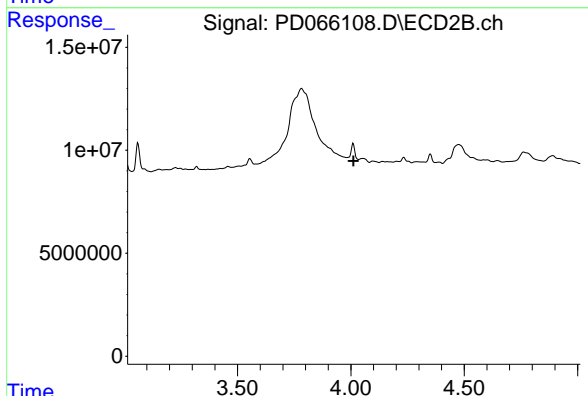
Volume Inj. : 2 µl
 Signal #1 Phase : ZB-MR2 Signal #2 Phase: ZB-MR1
 Signal #1 Info : 30M x 0.32mm x 0.2 Signal #2 Info : 30M x 0.32mm x 0.50µm



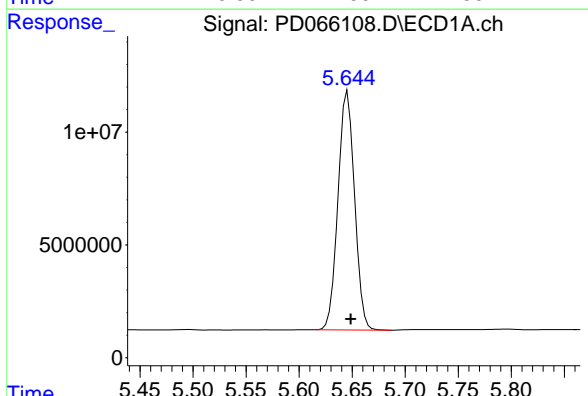


#1 Tetrachloro-m-xylene
 R.T.: 0.000 min
 Exp R.T. : 3.493 min
 Response: 0
 Conc: N.D.

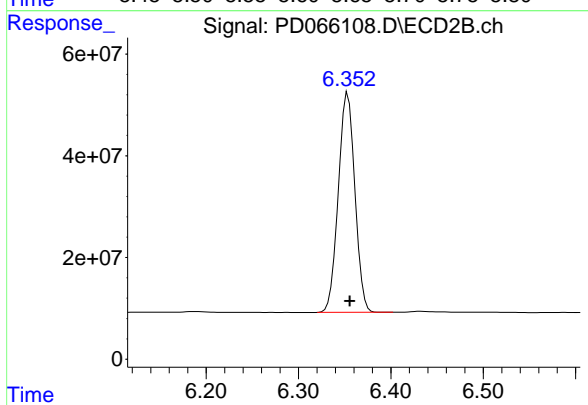
Instrument :
 ECD_D
 ClientSampleId :
 SB-5(3.0-3.5)DL



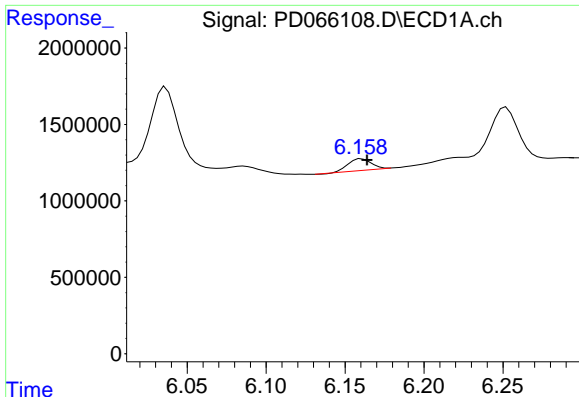
#1 Tetrachloro-m-xylene
 R.T.: 0.000 min
 Exp R.T. : 4.012 min
 Response: 0
 Conc: N.D.



#12 4,4'-DDE
 R.T.: 5.646 min
 Delta R.T.: -0.003 min
 Response: 115010779
 Conc: 105.66 ng/ml



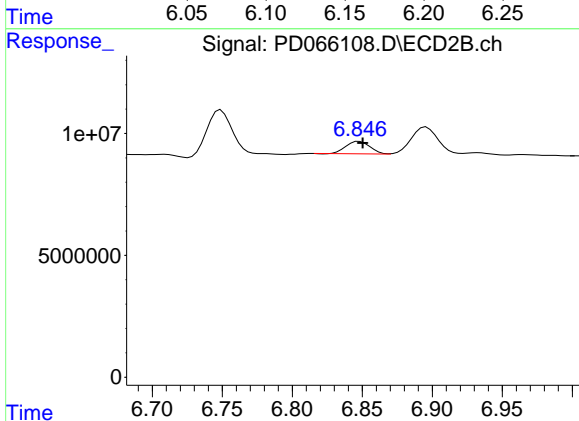
#12 4,4'-DDE
 R.T.: 6.354 min
 Delta R.T.: -0.002 min
 Response: 539067601
 Conc: 93.47 ng/ml



#16 4,4'-DDD

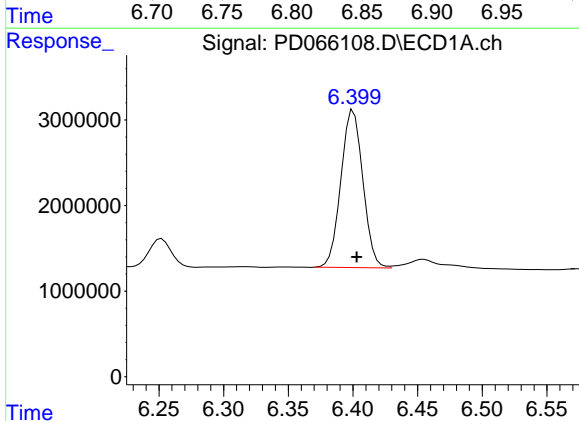
R.T.: 6.161 min
 Delta R.T.: -0.003 min
 Response: 771776
 Conc: 0.79 ng/ml

Instrument :
 ECD_D
 ClientSampleId :
 SB-5(3.0-3.5)DL



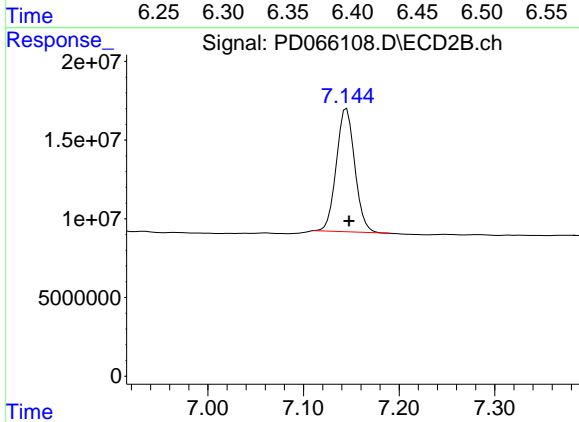
#16 4,4'-DDD

R.T.: 6.848 min
 Delta R.T.: -0.002 min
 Response: 6108904
 Conc: 1.24 ng/ml



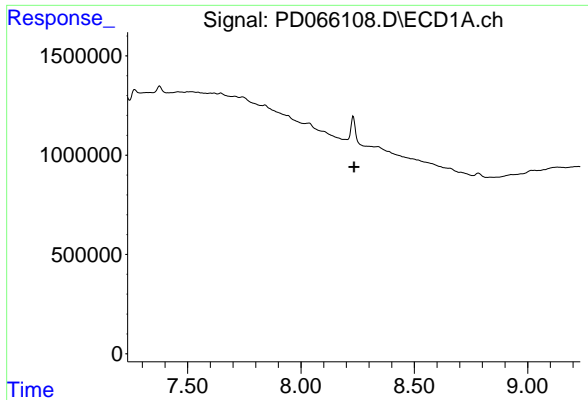
#17 4,4'-DDT

R.T.: 6.401 min
 Delta R.T.: -0.002 min
 Response: 21756917
 Conc: 19.77 ng/ml



#17 4,4'-DDT

R.T.: 7.145 min
 Delta R.T.: -0.002 min
 Response: 104766660
 Conc: 20.74 ng/ml



#28 Decachlorobiphenyl

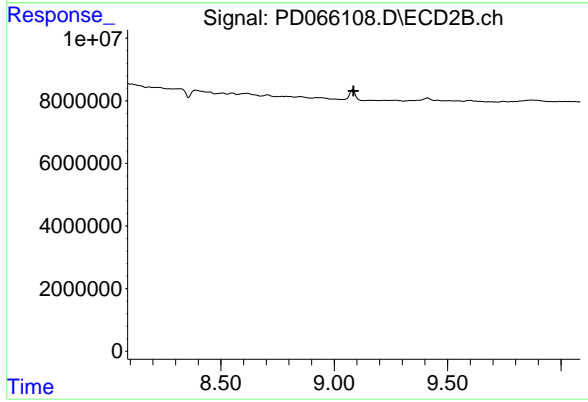
R.T.: 0.000 min

Exp R.T. : 8.235 min

Response: 0

Conc: N.D.

Instrument :
ECD_D
ClientSampled :
SB-5(3.0-3.5)DL



#28 Decachlorobiphenyl

R.T.: 0.000 min

Exp R.T. : 9.085 min

Response: 0

Conc: N.D.