

Data Path : Z:\pestpcbsrv\HPCHEM1\ECD_D\Data\PD100821\
 Data File : PD066111.D
 Signal(s) : Signal #1: ECD1A.ch Signal #2: ECD2B.ch
 Acq On : 08 Oct 2021 13:01
 Operator : AR\AJ
 Sample : PSTDCCC050
 Misc :
 ALS Vial : 4 Sample Multiplier: 1

Instrument :
 ECD_D
 ClientSampleId :
 PSTDCCC050

Integration File signal 1: autoint1.e
 Integration File signal 2: autoint2.e
 Quant Time: Oct 09 01:20:30 2021
 Quant Method : Z:\pestpcbsrv\HPCHEM1\ECD_D\Method\PD092221.M
 Quant Title : GC Extractables
 QLast Update : Thu Sep 23 12:18:33 2021
 Response via : Initial Calibration
 Integrator: ChemStation

Volume Inj. : 2 µl
 Signal #1 Phase : ZB-MR2 Signal #2 Phase: ZB-MR1
 Signal #1 Info : 30M x 0.32mm x0.2 Signal #2 Info : 30M x 0.32mm x 0.50µm

	Compound	RT#1	RT#2	Resp#1	Resp#2	ng/ml	ng/ml

System Monitoring Compounds							
1)	SA Tetrachlo...	3.492	4.011	41498766	286.2E6	56.037	49.838
28)	SA Decachlor...	8.231	9.081	58341196	207.6E6	42.711	53.635 #
Target Compounds							
2)	A alpha-BHC	3.930	4.406	65344610	416.4E6	58.183	49.525
3)	MA gamma-BHC...	4.214	4.692	62472297	388.9E6	55.710	50.342
4)	MA Heptachlor	4.511	5.196	68417358	358.4E6	57.358	49.395
5)	MB Aldrin	4.758	5.501	64710547	336.5E6	57.845	50.024
6)	B beta-BHC	4.462	4.869	33885617	179.3E6	59.358	48.501
7)	B delta-BHC	4.666	5.085	64506211	343.4E6	57.061	47.721
8)	B Heptachlo...	5.200	5.890	62854776	302.1E6	56.134	58.460
9)	A Endosulfan I	5.538	6.248	60136870	296.1E6	55.297	53.572
10)	B gamma-Chl...	5.425	6.124	65132747	313.1E6	53.939	52.196
11)	B alpha-Chl...	5.483	6.196	64856466	309.5E6	54.788	51.565
12)	B 4,4'-DDE	5.646	6.354	59796422	303.7E6	54.934	52.653
13)	MA Dieldrin	5.781	6.506	63678446	313.9E6	54.941	53.270
14)	MA Endrin	6.039	6.725	54664219	253.5E6	51.660	51.426
15)	B Endosulfa...	6.311	6.939	56145698	264.1E6	51.972	54.526
16)	A 4,4'-DDD	6.161	6.849	53566100	264.4E6	54.607	53.792
17)	MA 4,4'-DDT	6.401	7.146	56088475	267.0E6	50.957	52.857
18)	B Endrin al...	6.480	7.063	43795240	203.1E6	49.415	51.887
19)	B Endosulfa...	6.692	7.286	59850540	267.1E6	52.438	54.152
20)	A Methoxychlor	6.947	7.606	33750110	142.0E6	49.388	53.970
21)	B Endrin ke...	7.185	7.759	72788275	312.1E6	51.672	54.724
22)	Mirex	7.369	8.208	57430251	213.6E6	47.566	54.095

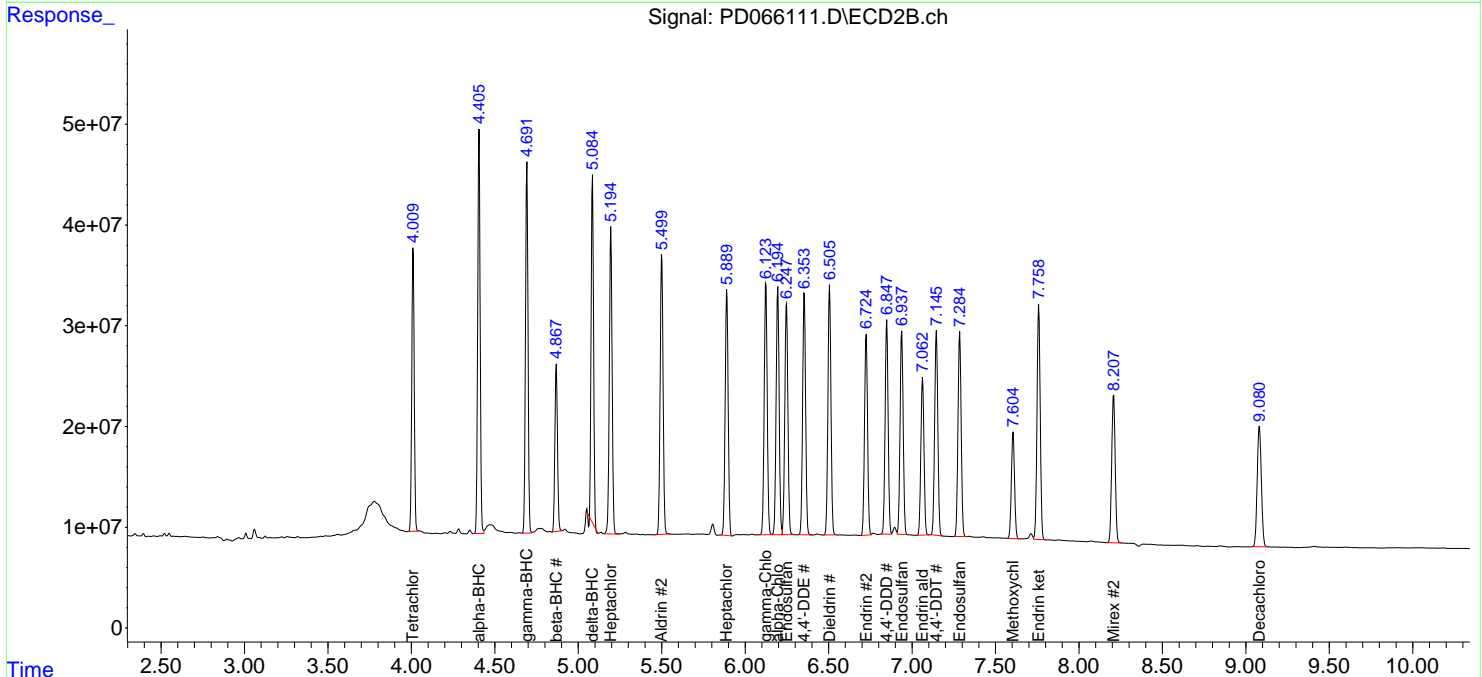
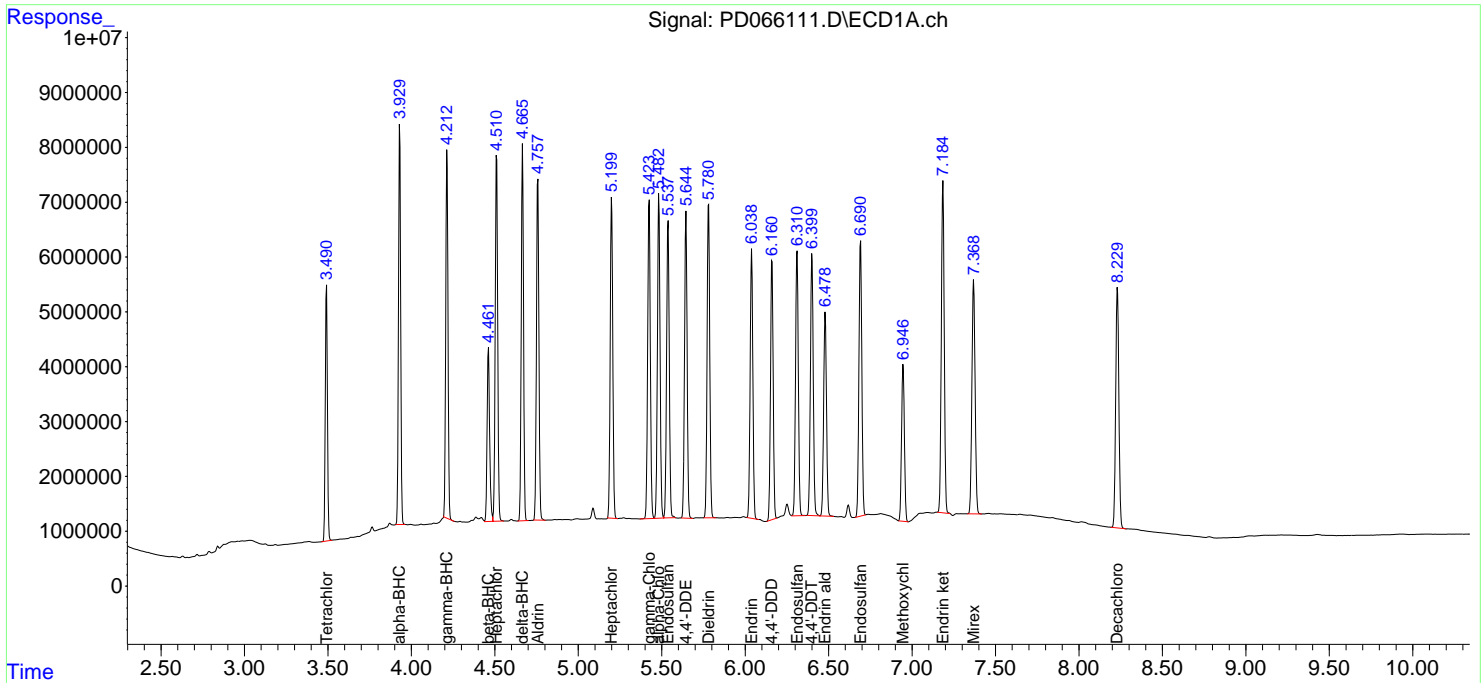
(f)=RT Delta > 1/2 Window (#)=Amounts differ by > 25% (m)=manual int.

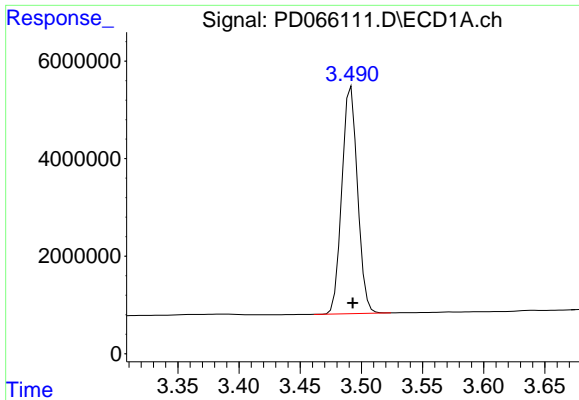
Data Path : Z:\pestpcbsrv\HPCHEM1\ECD_D\Data\PD100821\
 Data File : PD066111.D
 Signal(s) : Signal #1: ECD1A.ch Signal #2: ECD2B.ch
 Acq On : 08 Oct 2021 13:01
 Operator : AR\AJ
 Sample : PSTDCCC050
 Misc :
 ALS Vial : 4 Sample Multiplier: 1

Instrument :
 ECD_D
 ClientSampleId :
 PSTDCCC050

Integration File signal 1: autoint1.e
 Integration File signal 2: autoint2.e
 Quant Time: Oct 09 01:20:30 2021
 Quant Method : Z:\pestpcbsrv\HPCHEM1\ECD_D\Method\PD092221.M
 Quant Title : GC Extractables
 QLast Update : Thu Sep 23 12:18:33 2021
 Response via : Initial Calibration
 Integrator: ChemStation

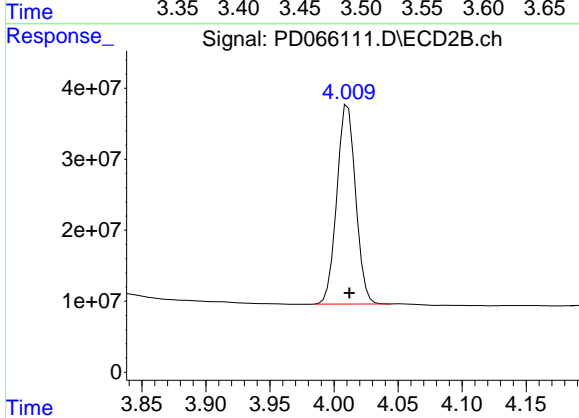
Volume Inj. : 2 µl
 Signal #1 Phase : ZB-MR2 Signal #2 Phase: ZB-MR1
 Signal #1 Info : 30M x 0.32mm x0.2 Signal #2 Info : 30M x 0.32mm x 0.50µm



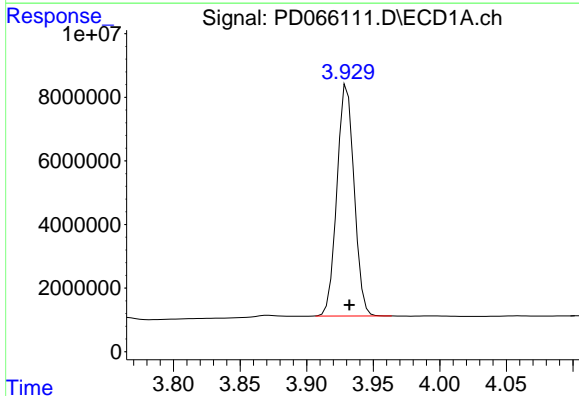


#1 Tetrachloro-m-xylene
 R.T.: 3.492 min
 Delta R.T.: -0.001 min
 Response: 41498766
 Conc: 56.04 ng/ml

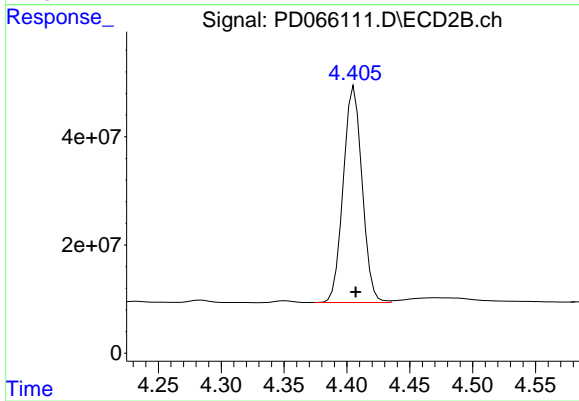
Instrument :
 ECD_D
 ClientSampleId :
 PSTDCCC050



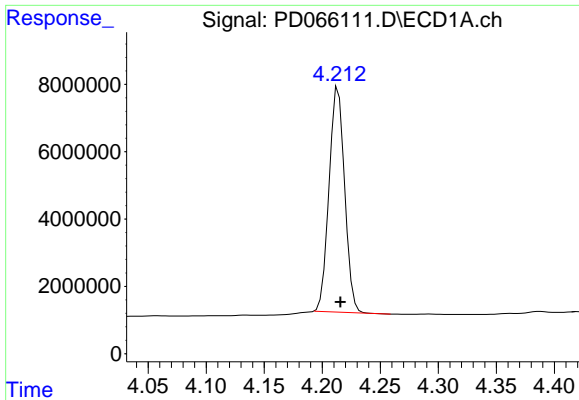
#1 Tetrachloro-m-xylene
 R.T.: 4.011 min
 Delta R.T.: -0.001 min
 Response: 286178681
 Conc: 49.84 ng/ml



#2 alpha-BHC
 R.T.: 3.930 min
 Delta R.T.: -0.002 min
 Response: 65344610
 Conc: 58.18 ng/ml

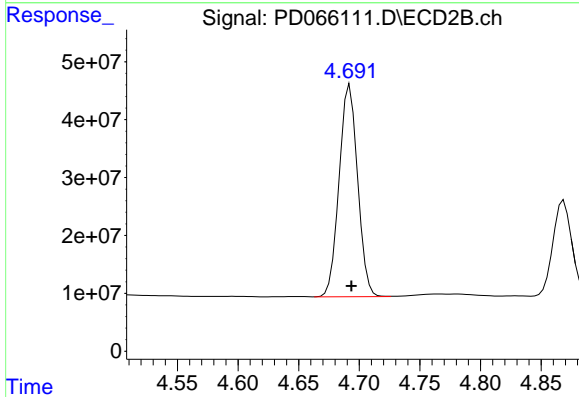


#2 alpha-BHC
 R.T.: 4.406 min
 Delta R.T.: -0.001 min
 Response: 416416865
 Conc: 49.53 ng/ml

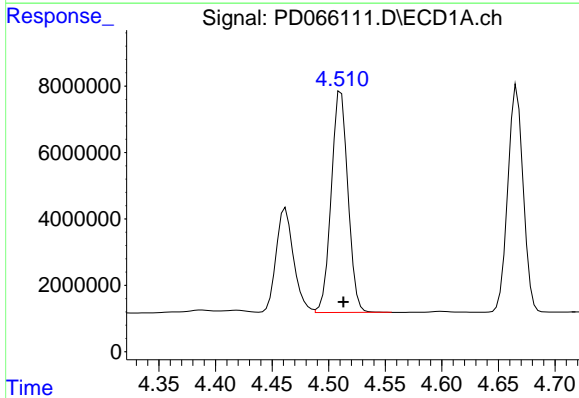


#3 gamma-BHC (Lindane)
 R.T.: 4.214 min
 Delta R.T.: -0.002 min
 Response: 62472297
 Conc: 55.71 ng/ml

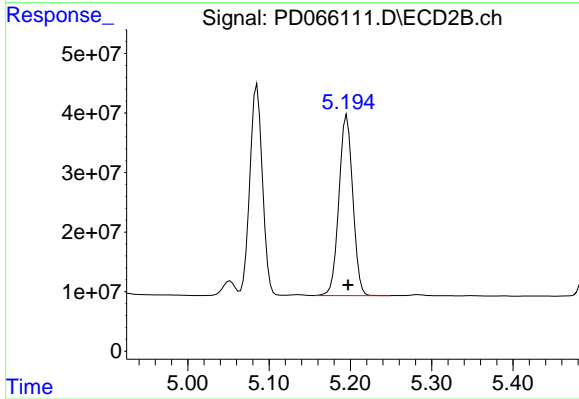
Instrument :
 ECD_D
 ClientSampleId :
 PSTDCCC050



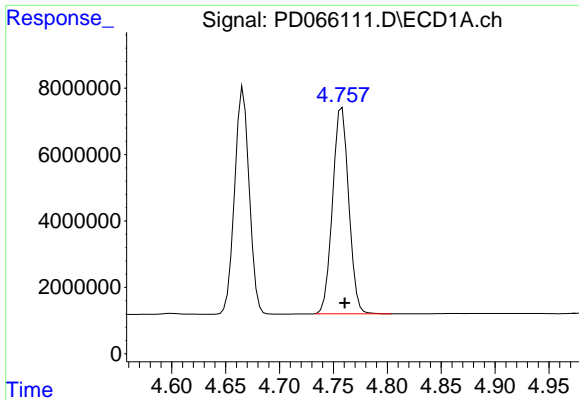
#3 gamma-BHC (Lindane)
 R.T.: 4.692 min
 Delta R.T.: -0.001 min
 Response: 388934891
 Conc: 50.34 ng/ml



#4 Heptachlor
 R.T.: 4.511 min
 Delta R.T.: -0.002 min
 Response: 68417358
 Conc: 57.36 ng/ml

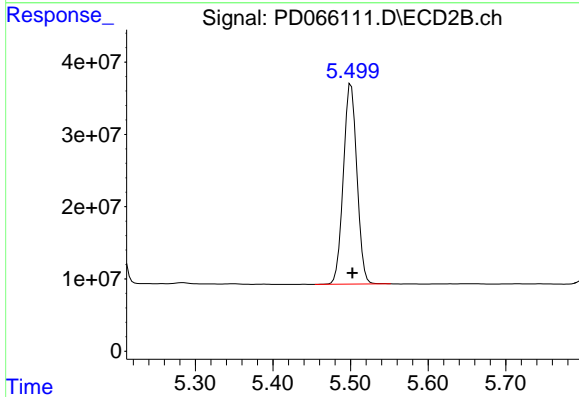


#4 Heptachlor
 R.T.: 5.196 min
 Delta R.T.: -0.001 min
 Response: 358395692
 Conc: 49.39 ng/ml

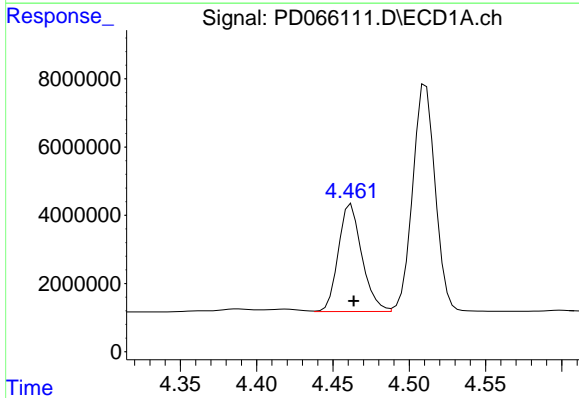


#5 Aldrin
 R.T.: 4.758 min
 Delta R.T.: -0.003 min
 Response: 64710547
 Conc: 57.85 ng/ml

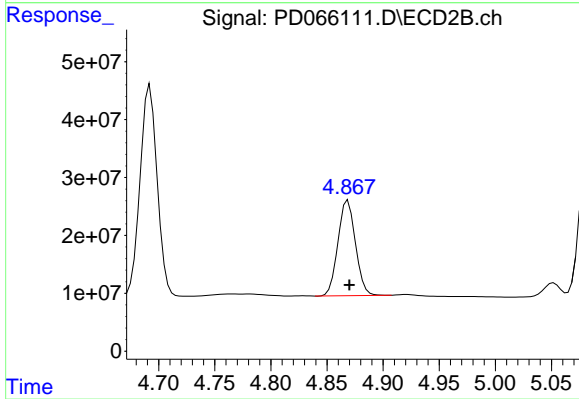
Instrument :
 ECD_D
 ClientSampleId :
 PSTDCCC050



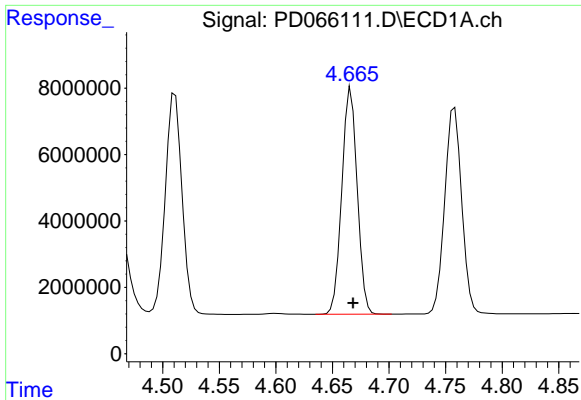
#5 Aldrin
 R.T.: 5.501 min
 Delta R.T.: -0.001 min
 Response: 336537970
 Conc: 50.02 ng/ml



#6 beta-BHC
 R.T.: 4.462 min
 Delta R.T.: -0.002 min
 Response: 33885617
 Conc: 59.36 ng/ml



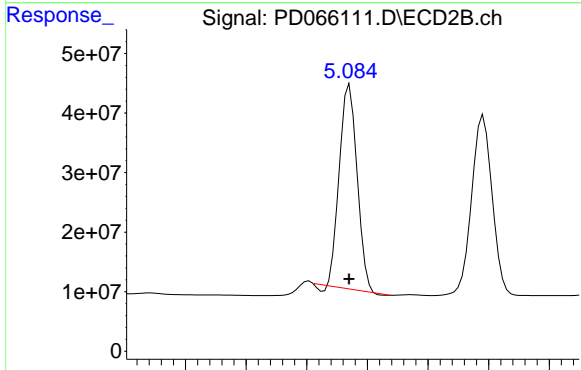
#6 beta-BHC
 R.T.: 4.869 min
 Delta R.T.: -0.001 min
 Response: 179253332
 Conc: 48.50 ng/ml



#7 delta-BHC

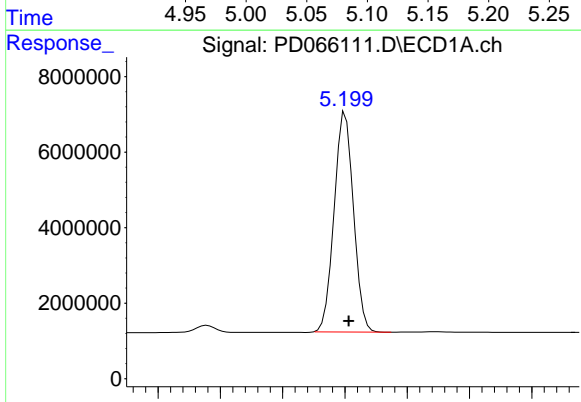
R.T.: 4.666 min
 Delta R.T.: -0.002 min
 Response: 64506211
 Conc: 57.06 ng/ml

Instrument :
 ECD_D
 ClientSampleID :
 PSTDCCC050



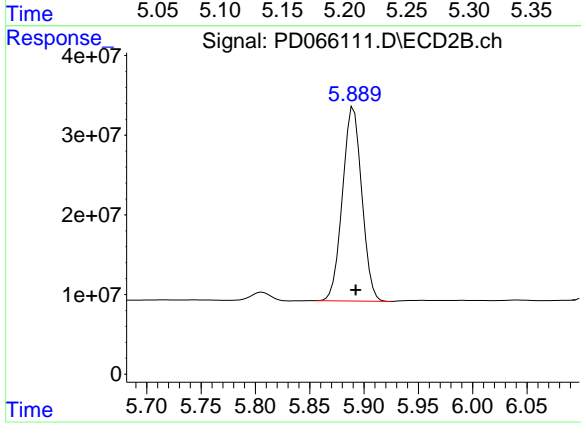
#7 delta-BHC

R.T.: 5.085 min
 Delta R.T.: 0.000 min
 Response: 343431947
 Conc: 47.72 ng/ml



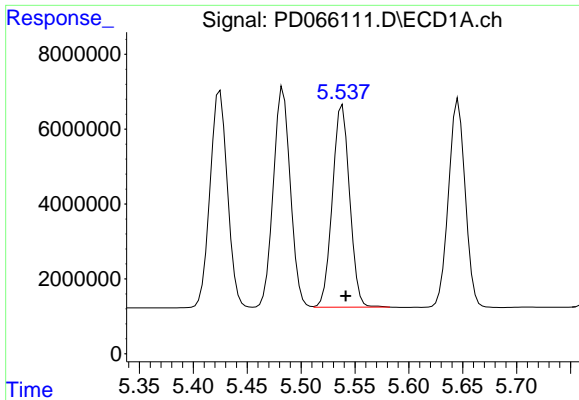
#8 Heptachlor epoxide

R.T.: 5.200 min
 Delta R.T.: -0.003 min
 Response: 62854776
 Conc: 56.13 ng/ml



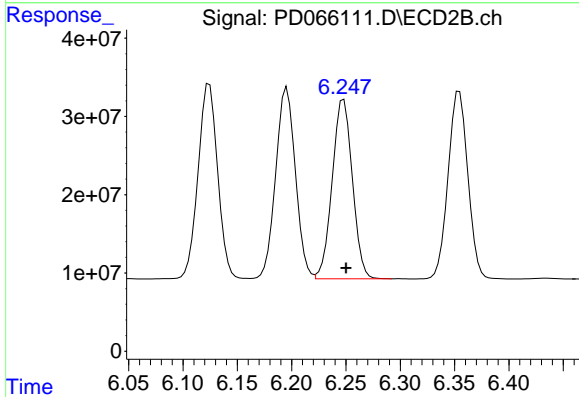
#8 Heptachlor epoxide

R.T.: 5.890 min
 Delta R.T.: -0.002 min
 Response: 302114979
 Conc: 58.46 ng/ml

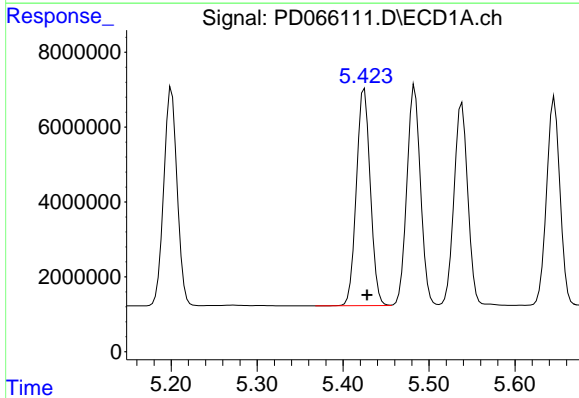


#9 Endosulfan I
 R.T.: 5.538 min
 Delta R.T.: -0.003 min
 Response: 60136870
 Conc: 55.30 ng/ml

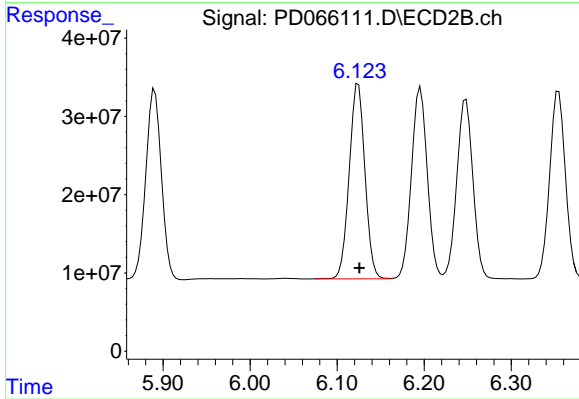
Instrument :
 ECD_D
 ClientSampleId :
 PSTDCCC050



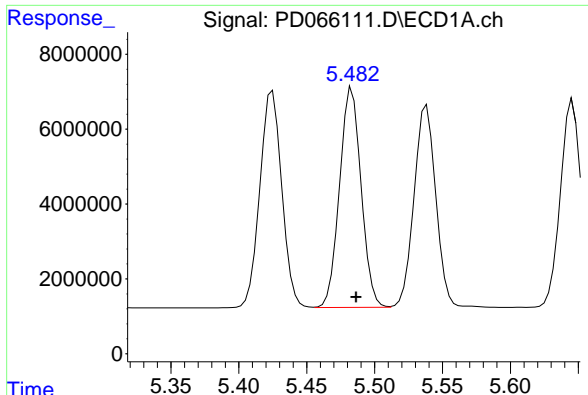
#9 Endosulfan I
 R.T.: 6.248 min
 Delta R.T.: -0.002 min
 Response: 296094899
 Conc: 53.57 ng/ml



#10 gamma-Chlordane
 R.T.: 5.425 min
 Delta R.T.: -0.003 min
 Response: 65132747
 Conc: 53.94 ng/ml

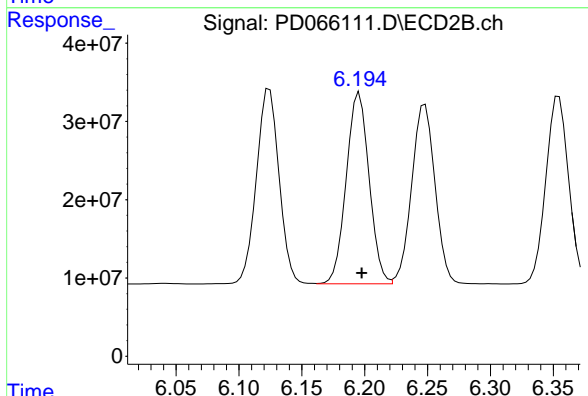


#10 gamma-Chlordane
 R.T.: 6.124 min
 Delta R.T.: -0.001 min
 Response: 313056733
 Conc: 52.20 ng/ml

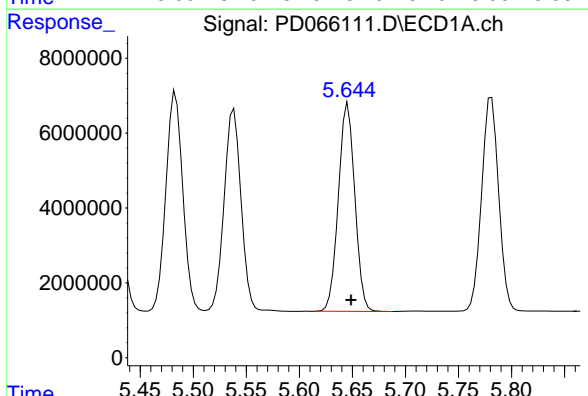


#11 alpha-Chlordane
R.T.: 5.483 min
Delta R.T.: -0.003 min
Response: 64856466
Conc: 54.79 ng/ml

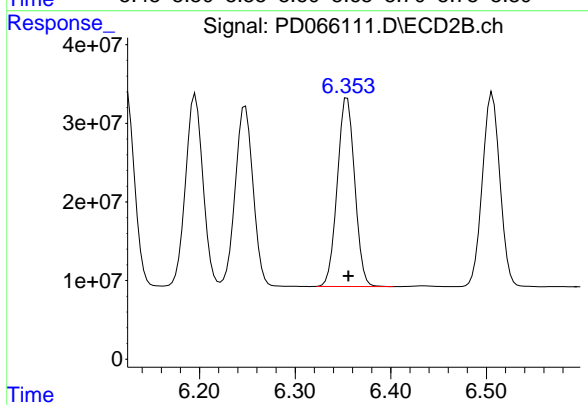
Instrument :
ECD_D
ClientSampleID :
PSTDCCC050



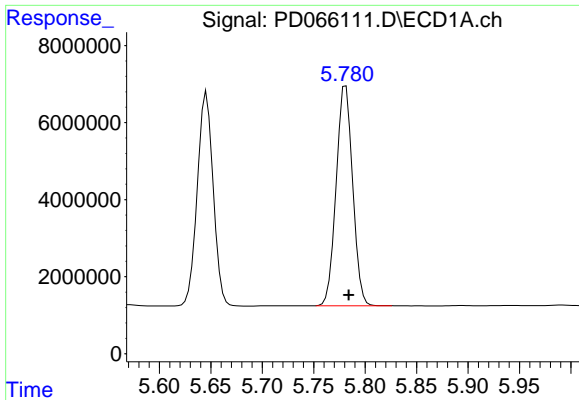
#11 alpha-Chlordane
R.T.: 6.196 min
Delta R.T.: -0.002 min
Response: 309494245
Conc: 51.56 ng/ml



#12 4,4'-DDE
R.T.: 5.646 min
Delta R.T.: -0.003 min
Response: 59796422
Conc: 54.93 ng/ml

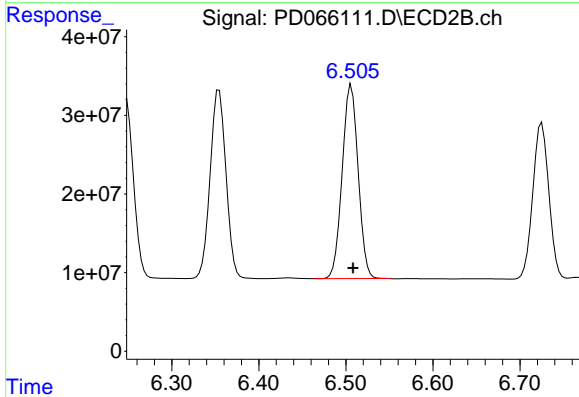


#12 4,4'-DDE
R.T.: 6.354 min
Delta R.T.: -0.001 min
Response: 303674861
Conc: 52.65 ng/ml

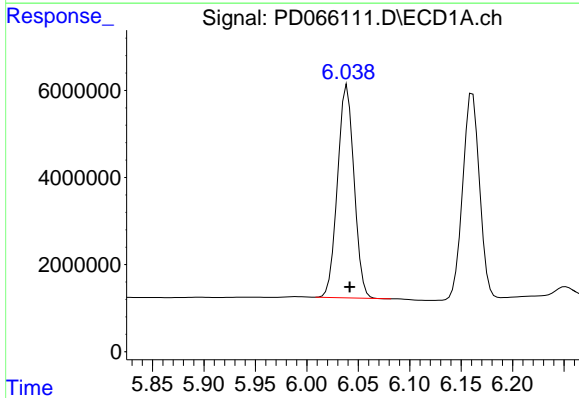


#13 Dieldrin
 R.T.: 5.781 min
 Delta R.T.: -0.003 min
 Response: 63678446
 Conc: 54.94 ng/ml

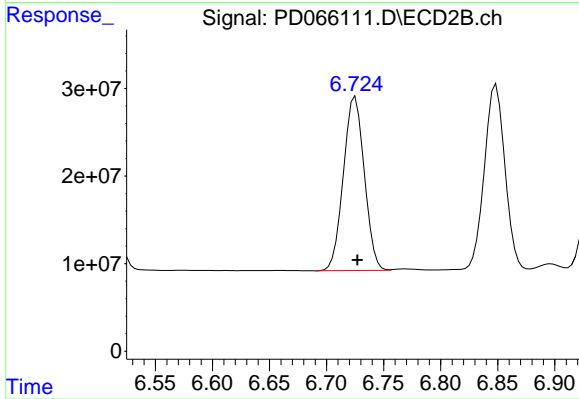
Instrument :
 ECD_D
 ClientSampled :
 PSTDCCC050



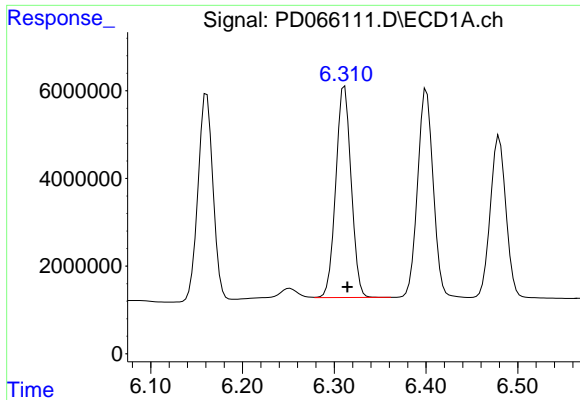
#13 Dieldrin
 R.T.: 6.506 min
 Delta R.T.: -0.002 min
 Response: 313932744
 Conc: 53.27 ng/ml



#14 Endrin
 R.T.: 6.039 min
 Delta R.T.: -0.003 min
 Response: 54664219
 Conc: 51.66 ng/ml



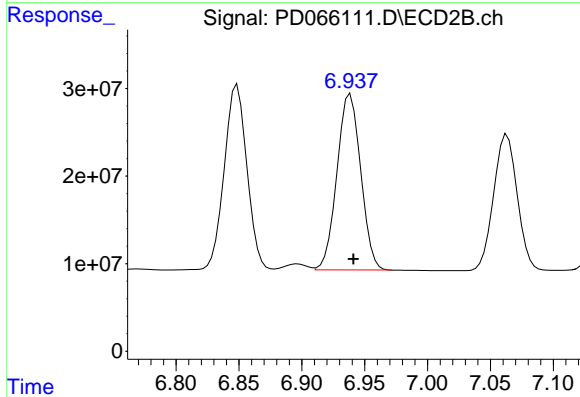
#14 Endrin
 R.T.: 6.725 min
 Delta R.T.: -0.002 min
 Response: 253536461
 Conc: 51.43 ng/ml



#15 Endosulfan II

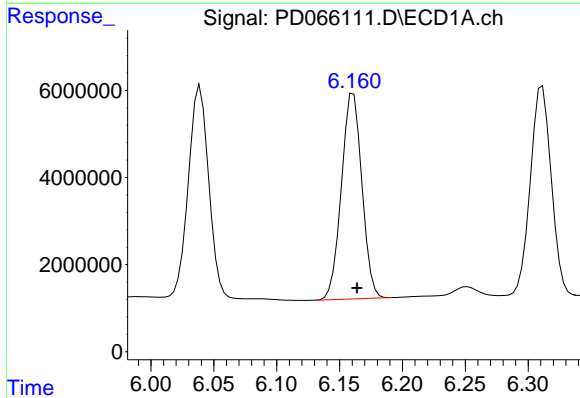
R.T.: 6.311 min
 Delta R.T.: -0.003 min
 Response: 56145698
 Conc: 51.97 ng/ml

Instrument :
 ECD_D
 ClientSampleId :
 PSTDCCC050



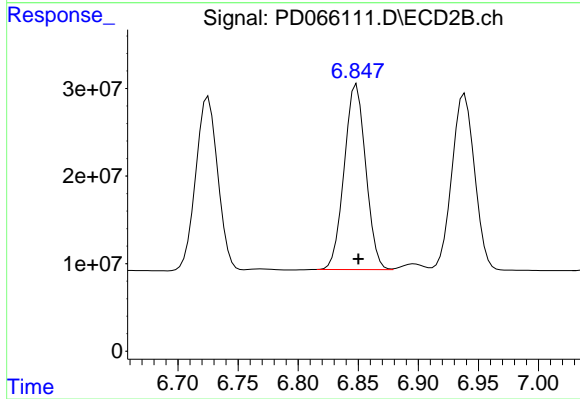
#15 Endosulfan II

R.T.: 6.939 min
 Delta R.T.: -0.002 min
 Response: 264116231
 Conc: 54.53 ng/ml



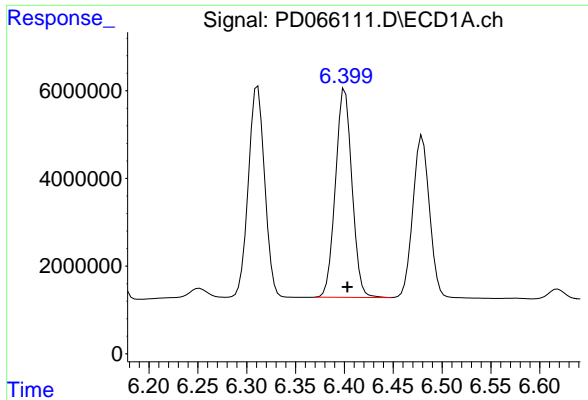
#16 4,4'-DDD

R.T.: 6.161 min
 Delta R.T.: -0.003 min
 Response: 53566100
 Conc: 54.61 ng/ml



#16 4,4'-DDD

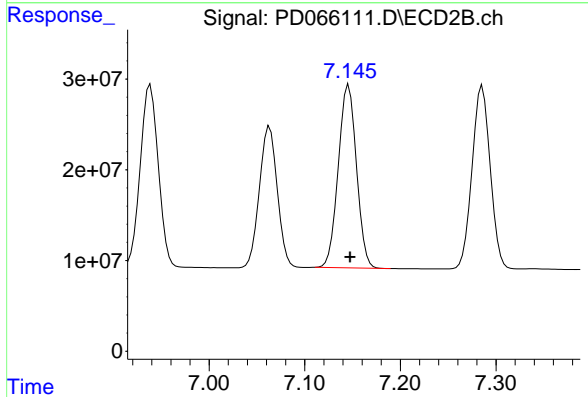
R.T.: 6.849 min
 Delta R.T.: -0.002 min
 Response: 264363824
 Conc: 53.79 ng/ml



#17 4,4'-DDT

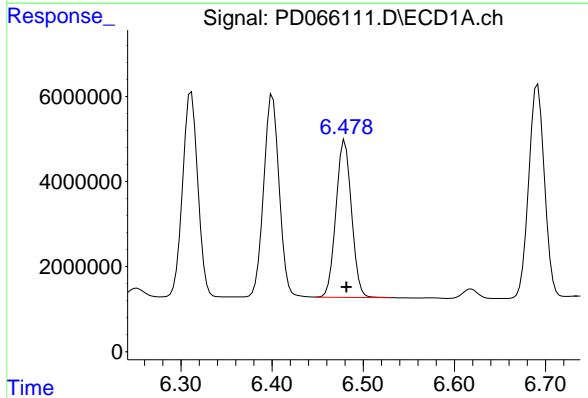
R.T.: 6.401 min
 Delta R.T.: -0.002 min
 Response: 56088475
 Conc: 50.96 ng/ml

Instrument :
 ECD_D
 ClientSampleId :
 PSTDCCC050



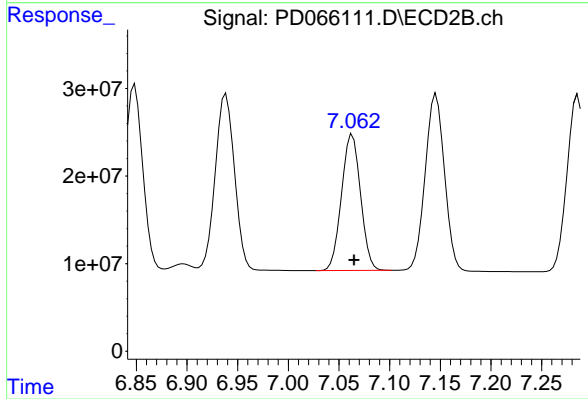
#17 4,4'-DDT

R.T.: 7.146 min
 Delta R.T.: -0.002 min
 Response: 267001822
 Conc: 52.86 ng/ml



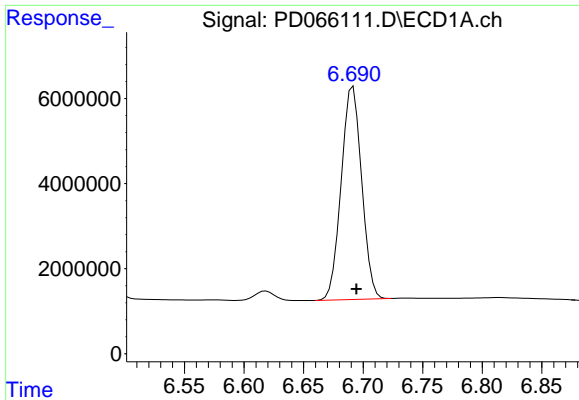
#18 Endrin aldehyde

R.T.: 6.480 min
 Delta R.T.: -0.002 min
 Response: 43795240
 Conc: 49.42 ng/ml



#18 Endrin aldehyde

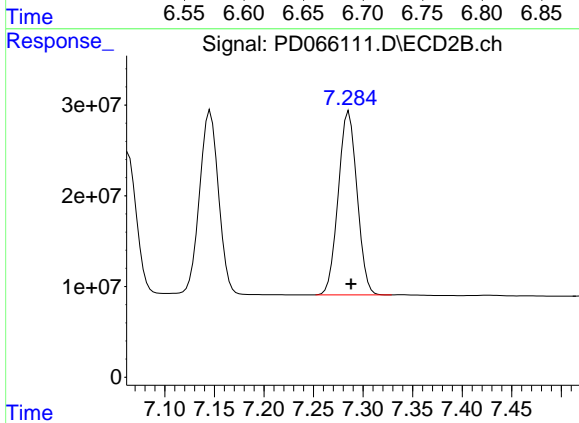
R.T.: 7.063 min
 Delta R.T.: -0.002 min
 Response: 203134099
 Conc: 51.89 ng/ml



#19 Endosulfan Sulfate

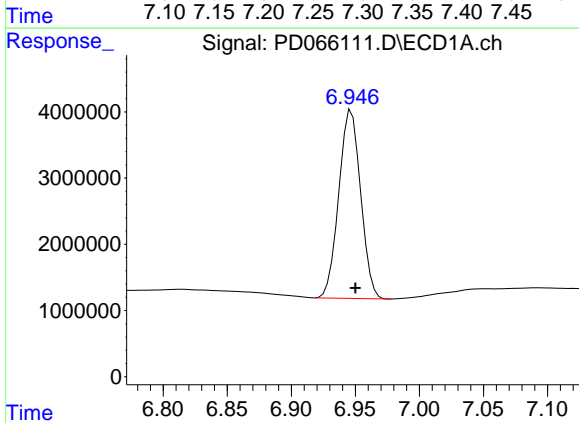
R.T.: 6.692 min
 Delta R.T.: -0.003 min
 Response: 59850540
 Conc: 52.44 ng/ml

Instrument :
 ECD_D
 ClientSampleId :
 PSTDCCC050



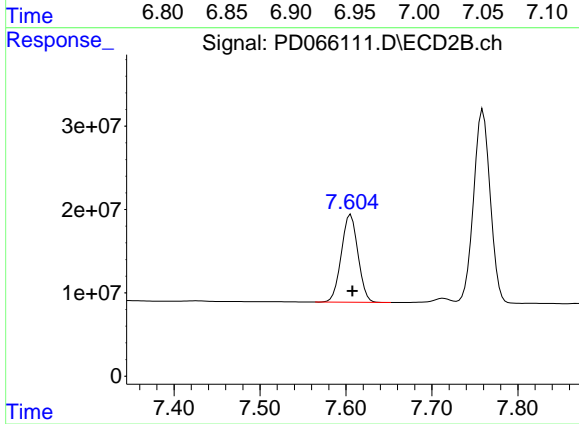
#19 Endosulfan Sulfate

R.T.: 7.286 min
 Delta R.T.: -0.002 min
 Response: 267095065
 Conc: 54.15 ng/ml



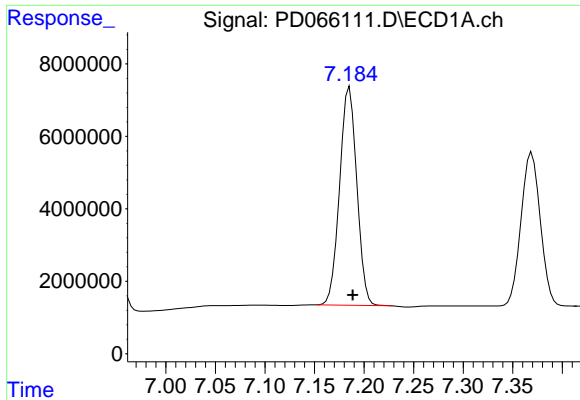
#20 Methoxychlor

R.T.: 6.947 min
 Delta R.T.: -0.003 min
 Response: 33750110
 Conc: 49.39 ng/ml



#20 Methoxychlor

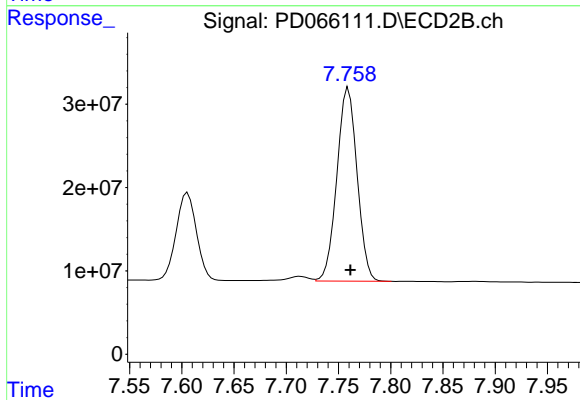
R.T.: 7.606 min
 Delta R.T.: -0.002 min
 Response: 142028095
 Conc: 53.97 ng/ml



#21 Endrin ketone

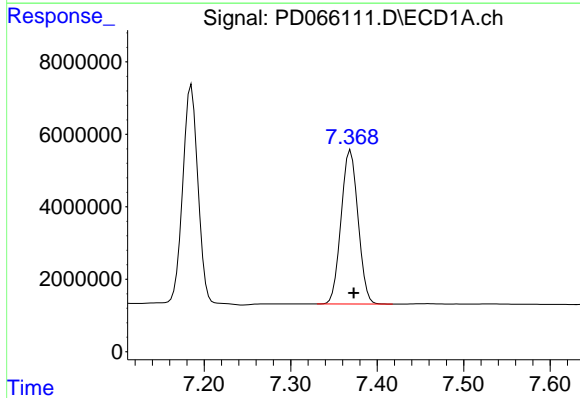
R.T.: 7.185 min
 Delta R.T.: -0.003 min
 Response: 72788275
 Conc: 51.67 ng/ml

Instrument :
 ECD_D
 ClientSampleId :
 PSTDCCC050



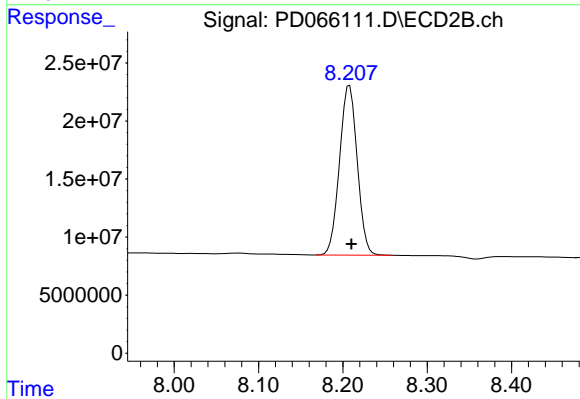
#21 Endrin ketone

R.T.: 7.759 min
 Delta R.T.: -0.002 min
 Response: 312087834
 Conc: 54.72 ng/ml



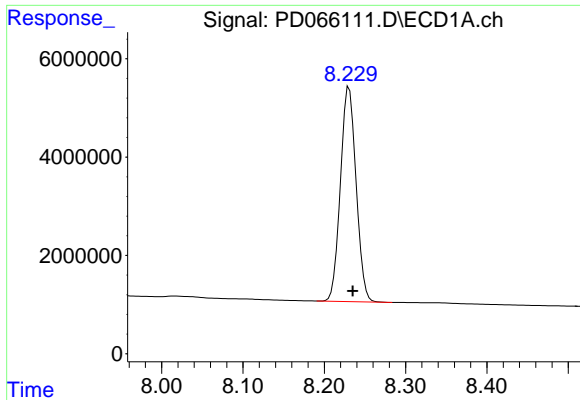
#22 Mirex

R.T.: 7.369 min
 Delta R.T.: -0.004 min
 Response: 57430251
 Conc: 47.57 ng/ml



#22 Mirex

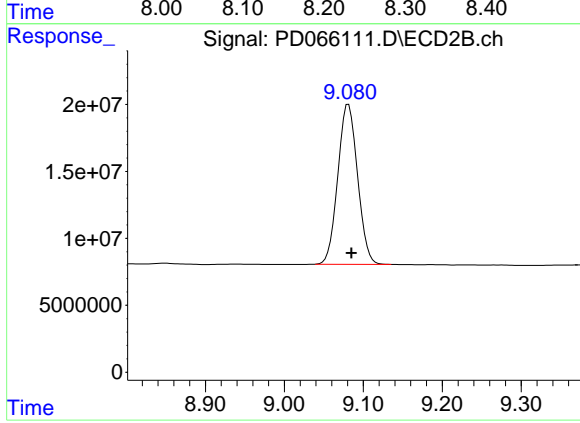
R.T.: 8.208 min
 Delta R.T.: -0.002 min
 Response: 213601661
 Conc: 54.10 ng/ml



#28 Decachlorobiphenyl

R.T.: 8.231 min
Delta R.T.: -0.004 min
Response: 58341196
Conc: 42.71 ng/ml

Instrument :
ECD_D
ClientSampled :
PSTDCCC050



#28 Decachlorobiphenyl

R.T.: 9.081 min
Delta R.T.: -0.004 min
Response: 207575472
Conc: 53.63 ng/ml