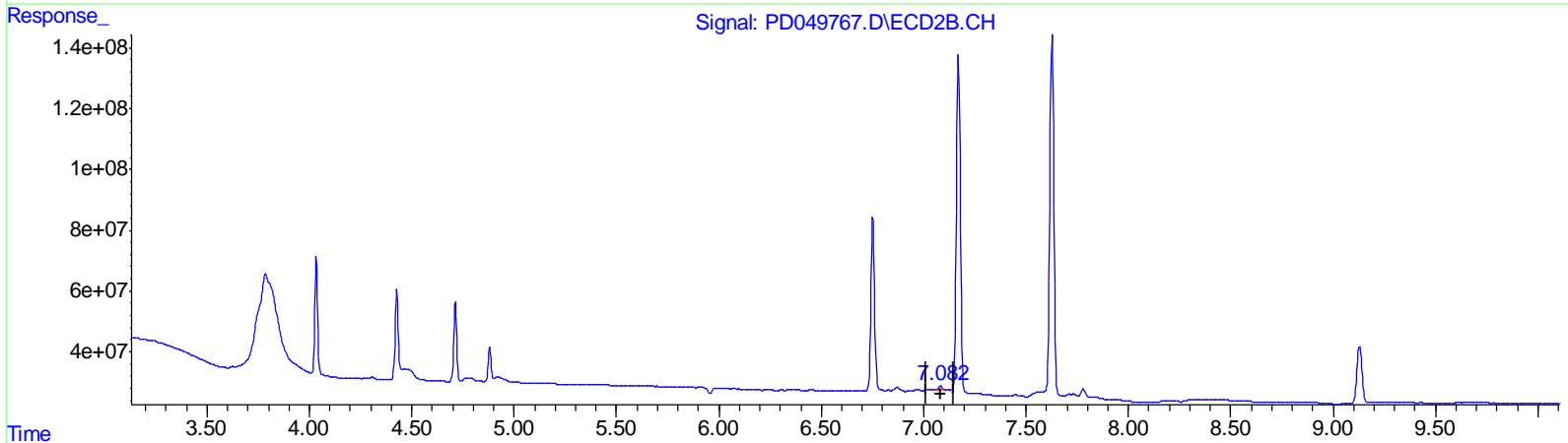
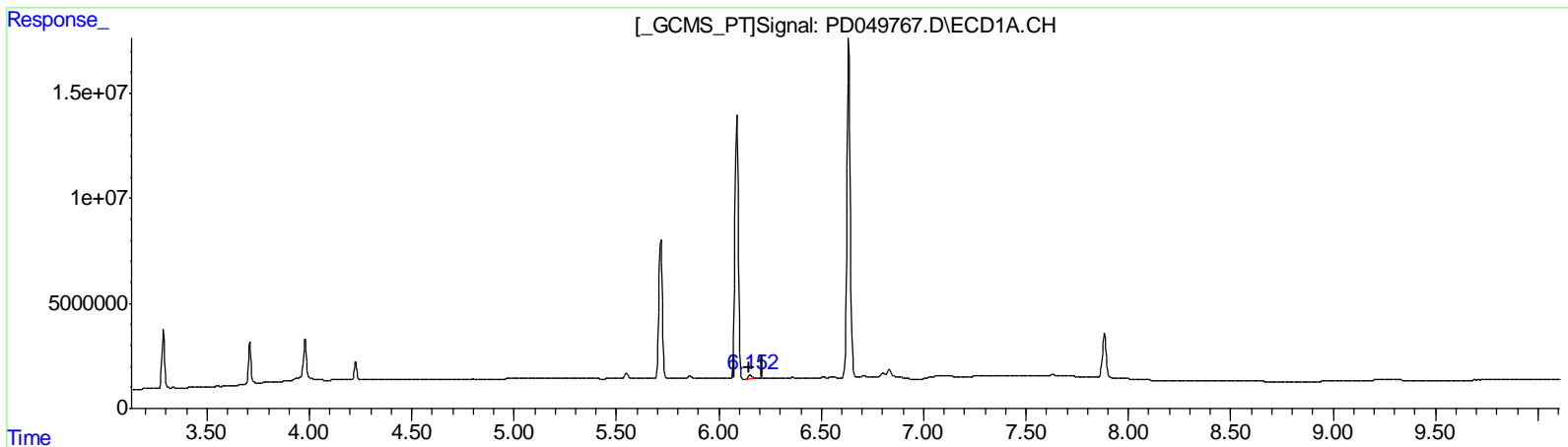


Data Path : Z:\pestpcbsrv\HPCHEM1\ECD_D\Data\PD101018\
 Data File : PD049767.D
 Signal(s) : Signal #1: ECD1A.CH Signal #2: ECD2B.CH
 Acq On : 10 Oct 2018 12:05
 Operator : AJ\SJ
 Sample : PEM27
 Misc :
 ALS Vial : 3 Sample Multiplier: 1

Integration File signal 1: autoint1.e
 Integration File signal 2: autoint2.e
 Quant Time: Oct 11 05:05:41 2018
 Quant Method : Z:\pestpcbsrv\HPCHEM1\ECD_D\Method\PD100918CLP.M
 Quant Title : GC Extractables
 QLast Update : Tue Oct 09 09:02:50 2018
 Response via : Initial Calibration
 Integrator: ChemStation 6890 Scale Mode: Large solvent peaks clipped

Volume Inj. : 1 µl
 Signal #1 Phase : ZB-MR2 Signal #2 Phase: ZB-MR1
 Signal #1 Info : 30M x 0.32mm x0.2 Signal #2 Info : 30M x 0.32mm x 0.50µm



QEdit

(18) Endrin aldehyde (B)
 6.152min 1.773 ng/ml m
 response 2001289

(18) Endrin aldehyde #2 (B)
 7.084min 1.383 ng/ml
 response 18439255

(+) = Expected Retention Time