

Data Path : Z:\pestpcbsrv\HPCHEM1\ECD\_D\Data\PD101124\  
 Data File : PD085974.D  
 Signal(s) : Signal #1: ECD1A.ch Signal #2: ECD2B.ch  
 Acq On : 11 Oct 2024 12:36  
 Operator : AR\AJ  
 Sample : PCHLORICC750  
 Misc :  
 ALS Vial : 11 Sample Multiplier: 1

Instrument :  
 ECD\_D  
 ClientSampleId :  
 PCHLORICC750

Integration File signal 1: autoint1.e  
 Integration File signal 2: autoint2.e  
 Quant Time: Oct 11 13:51:46 2024  
 Quant Method : Z:\pestpcbsrv\HPCHEM1\ECD\_D\Method\PD101124.M  
 Quant Title : GC Extractables  
 QLast Update : Fri Oct 11 13:43:09 2024  
 Response via : Initial Calibration  
 Integrator: ChemStation

Volume Inj. : 1 µl  
 Signal #1 Phase : ZB-MR1 Signal #2 Phase: ZB-MR2  
 Signal #1 Info : 30M x 0.32mm x0.5 Signal #2 Info : 30M x 0.32mm x 0.25µm

Compound	RT#1	RT#2	Resp#1	Resp#2	ng/ml	ng/ml
-----						
System Monitoring Compounds						
1) SA Tetrachlo...	3.442	2.876	84907420	497.8E6	74.085	74.080
28) SA Decachlor...	8.897	8.057	149.0E6	369.5E6	74.184	73.971
Target Compounds						
23) Chlordane-1	4.593	3.895	53535153	190.2E6	747.098	739.386
24) Chlordane-2	5.117	4.475	57605356	205.7E6	741.003	741.139
25) Chlordane-3	5.819	5.112	237.7E6	554.0E6	746.311	740.326
26) Chlordane-4	5.904	5.176	288.8E6	494.2E6	746.217	739.799
27) Chlordane-5	6.739	6.077	49883218	209.3E6	743.998	737.890
-----						

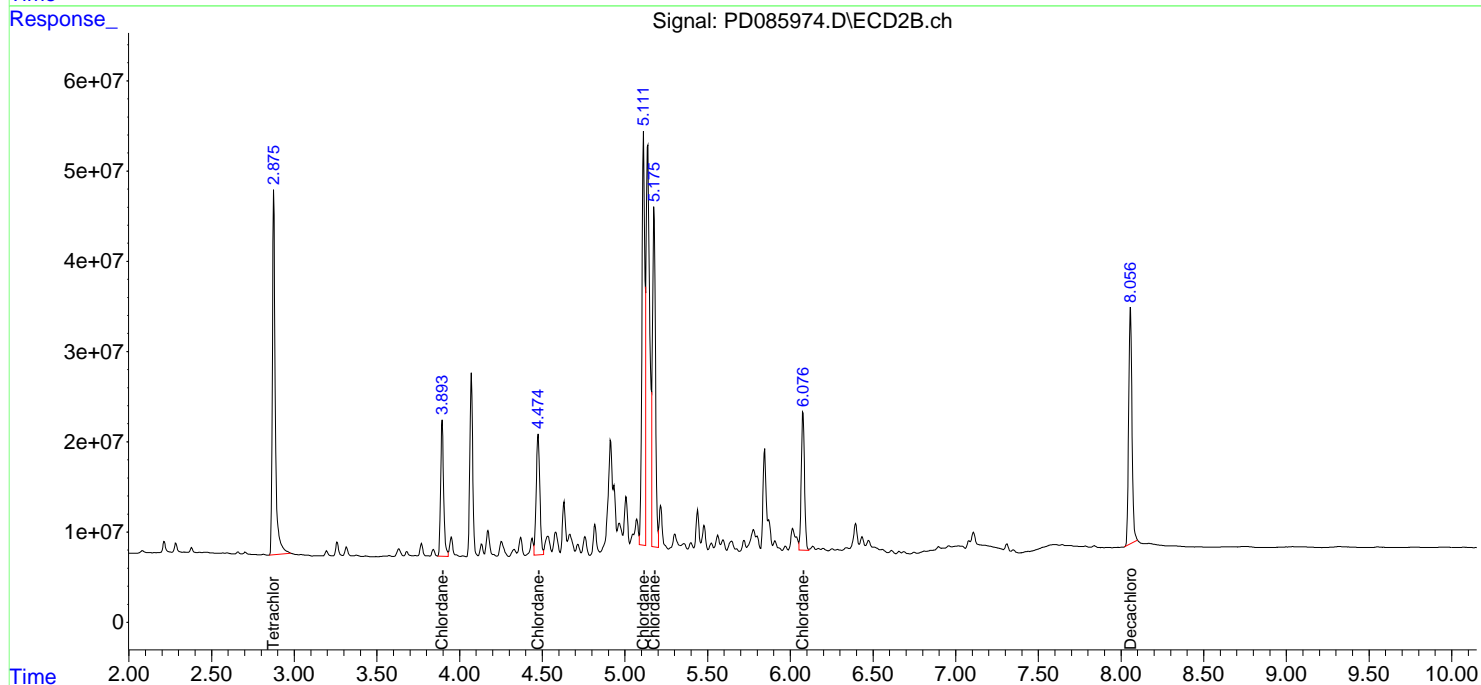
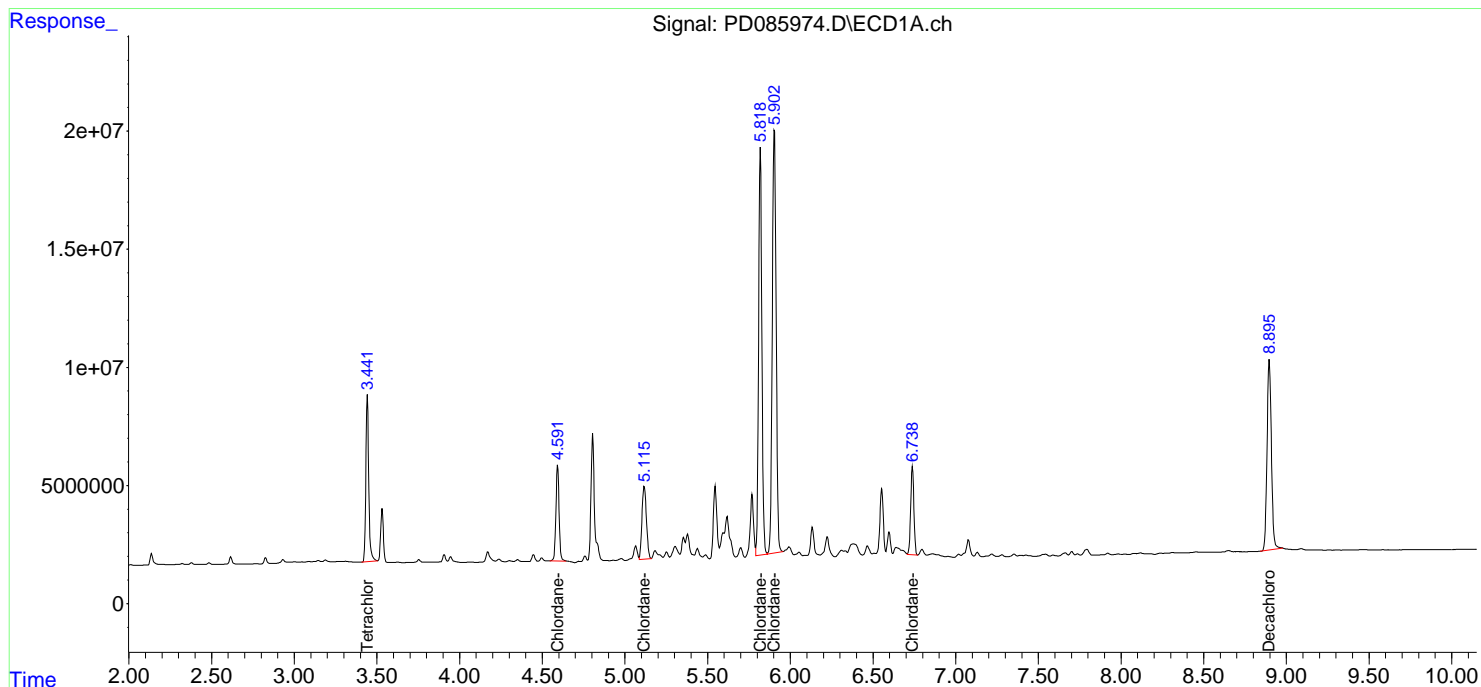
(f)=RT Delta > 1/2 Window (#)=Amounts differ by > 25% (m)=manual int.

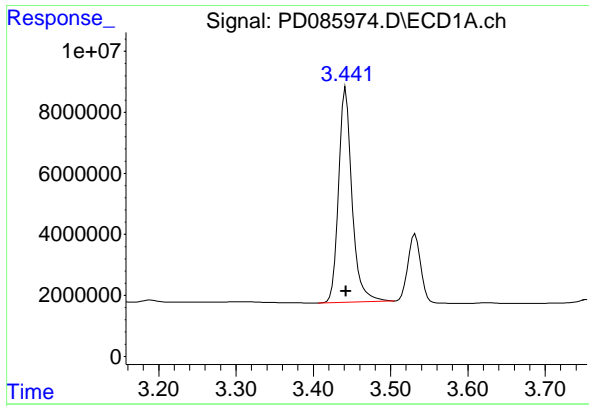
Data Path : Z:\pestpcbsrv\HPCHEM1\ECD\_D\Data\PD101124\  
 Data File : PD085974.D  
 Signal(s) : Signal #1: ECD1A.ch Signal #2: ECD2B.ch  
 Acq On : 11 Oct 2024 12:36  
 Operator : AR\AJ  
 Sample : PCHLORICC750  
 Misc :  
 ALS Vial : 11 Sample Multiplier: 1

Instrument :  
 ECD\_D  
 ClientSampleId :  
 PCHLORICC750

Integration File signal 1: autoint1.e  
 Integration File signal 2: autoint2.e  
 Quant Time: Oct 11 13:51:46 2024  
 Quant Method : Z:\pestpcbsrv\HPCHEM1\ECD\_D\Method\PD101124.M  
 Quant Title : GC Extractables  
 QLast Update : Fri Oct 11 13:43:09 2024  
 Response via : Initial Calibration  
 Integrator: ChemStation

Volume Inj. : 1 µl  
 Signal #1 Phase : ZB-MR1 Signal #2 Phase: ZB-MR2  
 Signal #1 Info : 30M x 0.32mm x 0.5 Signal #2 Info : 30M x 0.32mm x 0.25µm

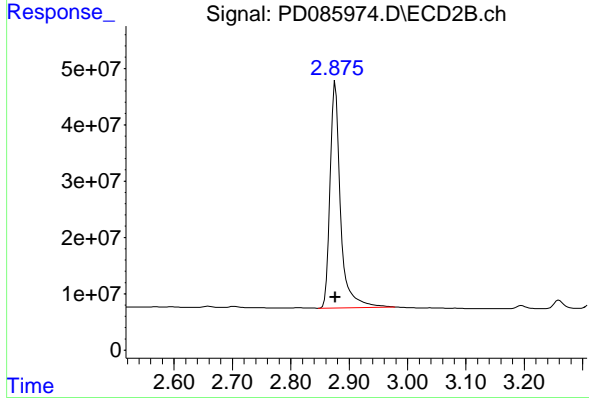




#1 Tetrachloro-m-xylene

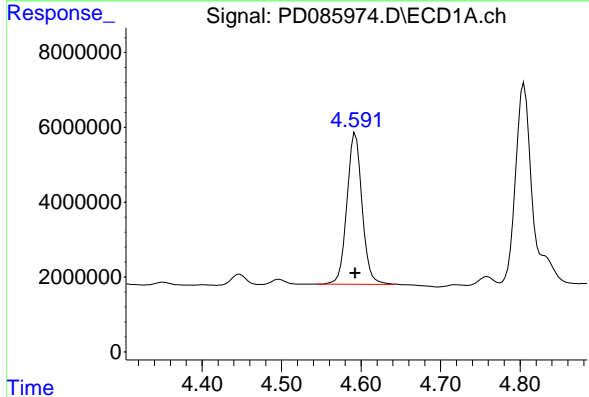
R.T.: 3.442 min  
 Delta R.T.: 0.000 min  
 Response: 84907420  
 Conc: 74.09 ng/ml

Instrument :  
 ECD\_D  
 ClientSampleId :  
 PCHLORICC750



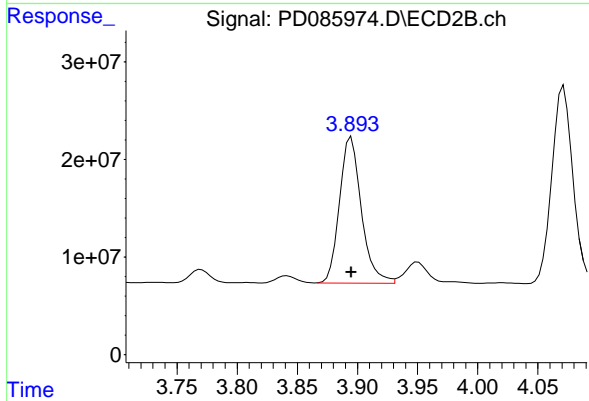
#1 Tetrachloro-m-xylene

R.T.: 2.876 min  
 Delta R.T.: 0.000 min  
 Response: 497849143  
 Conc: 74.08 ng/ml



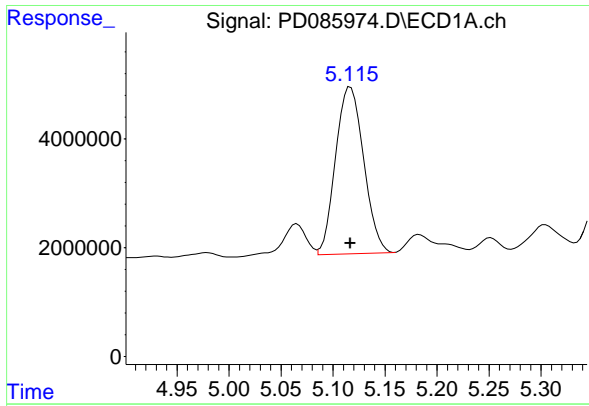
#23 Chlordane-1

R.T.: 4.593 min  
 Delta R.T.: 0.000 min  
 Response: 53535153  
 Conc: 747.10 ng/ml



#23 Chlordane-1

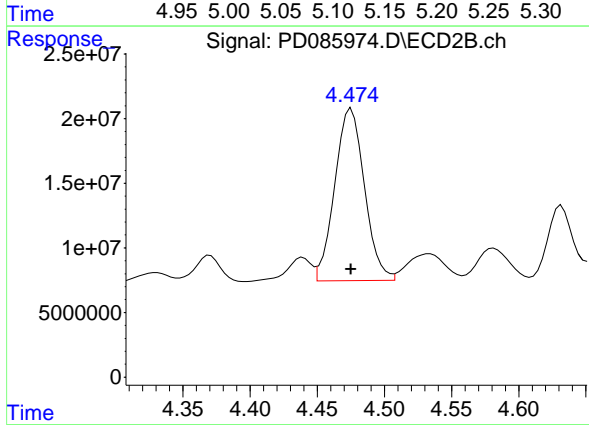
R.T.: 3.895 min  
 Delta R.T.: 0.000 min  
 Response: 190171594  
 Conc: 739.39 ng/ml



#24 Chlordane-2

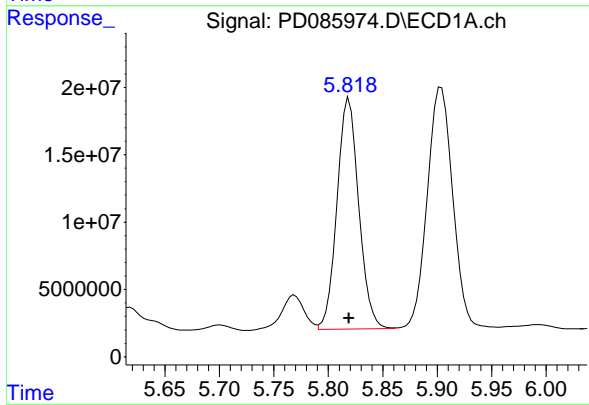
R.T.: 5.117 min  
 Delta R.T.: 0.000 min  
 Response: 57605356  
 Conc: 741.00 ng/ml

Instrument :  
 ECD\_D  
 ClientSampleId :  
 PCHLORICC750



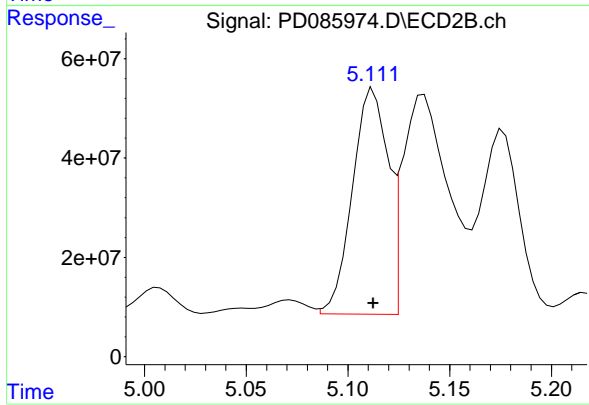
#24 Chlordane-2

R.T.: 4.475 min  
 Delta R.T.: 0.000 min  
 Response: 205665389  
 Conc: 741.14 ng/ml



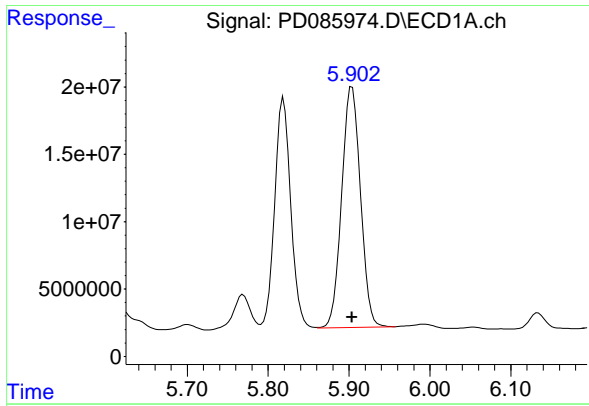
#25 Chlordane-3

R.T.: 5.819 min  
 Delta R.T.: 0.000 min  
 Response: 237748229  
 Conc: 746.31 ng/ml



#25 Chlordane-3

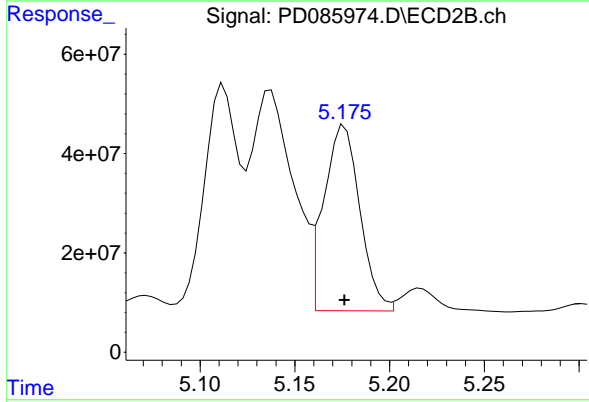
R.T.: 5.112 min  
 Delta R.T.: 0.000 min  
 Response: 553952830  
 Conc: 740.33 ng/ml



#26 Chlordane-4

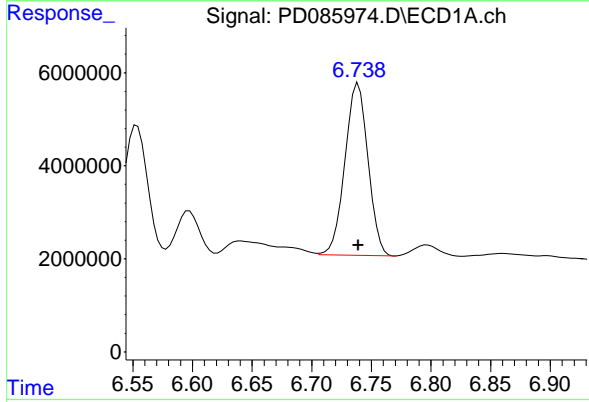
R.T.: 5.904 min  
 Delta R.T.: 0.000 min  
 Response: 288847359  
 Conc: 746.22 ng/ml

Instrument :  
 ECD\_D  
 ClientSampleId :  
 PCHLORICC750



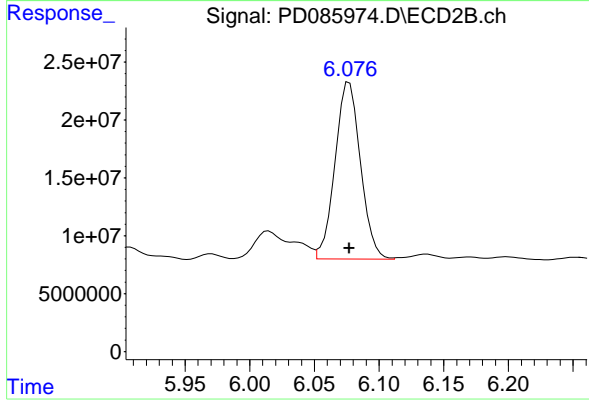
#26 Chlordane-4

R.T.: 5.176 min  
 Delta R.T.: 0.000 min  
 Response: 494196343  
 Conc: 739.80 ng/ml



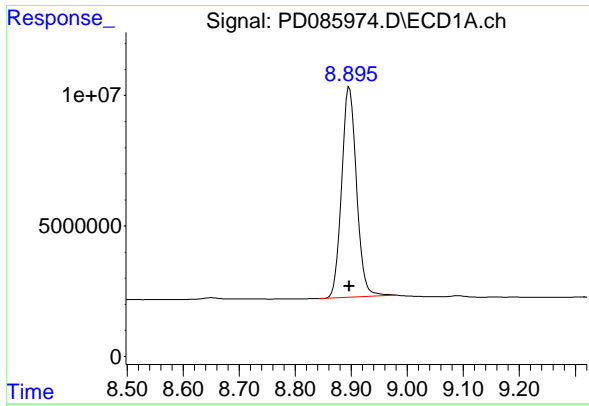
#27 Chlordane-5

R.T.: 6.739 min  
 Delta R.T.: 0.000 min  
 Response: 49883218  
 Conc: 744.00 ng/ml



#27 Chlordane-5

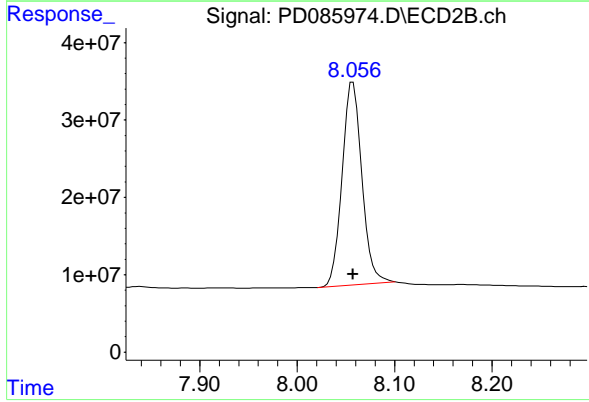
R.T.: 6.077 min  
 Delta R.T.: 0.000 min  
 Response: 209295932  
 Conc: 737.89 ng/ml



#28 Decachlorobiphenyl

R.T.: 8.897 min  
Delta R.T.: 0.000 min  
Response: 149003615  
Conc: 74.18 ng/ml

Instrument :  
ECD\_D  
ClientSampleId :  
PCHLORICC750



#28 Decachlorobiphenyl

R.T.: 8.057 min  
Delta R.T.: 0.000 min  
Response: 369485230  
Conc: 73.97 ng/ml