

Data Path : Z:\pestpcbsrv\HPCHEM1\ECD\_D\Data\PD101325\  
 Data File : PD090565.D  
 Signal(s) : Signal #1: ECD1A.ch Signal #2: ECD2B.ch  
 Acq On : 13 Oct 2025 15:51  
 Operator : AR\AJ  
 Sample : PEM114  
 Misc :  
 ALS Vial : 3 Sample Multiplier: 1

Instrument :  
 ECD\_D  
 ClientSampleId :  
 PEM102

Integration File signal 1: autoint1.e  
 Integration File signal 2: autoint2.e  
 Quant Time: Oct 14 05:54:36 2025  
 Quant Method : Z:\pestpcbsrv\HPCHEM1\ECD\_D\Method\PD091725CLP.M  
 Quant Title : GC Extractables  
 QLast Update : Thu Sep 18 07:48:10 2025  
 Response via : Initial Calibration  
 Integrator: ChemStation

Volume Inj. : 1 µl  
 Signal #1 Phase : ZB-MR2 Signal #2 Phase: ZB-MR2  
 Signal #1 Info : 30M x 0.32mm x0.5 Signal #2 Info : 30M x 0.32mm x 0.25µm

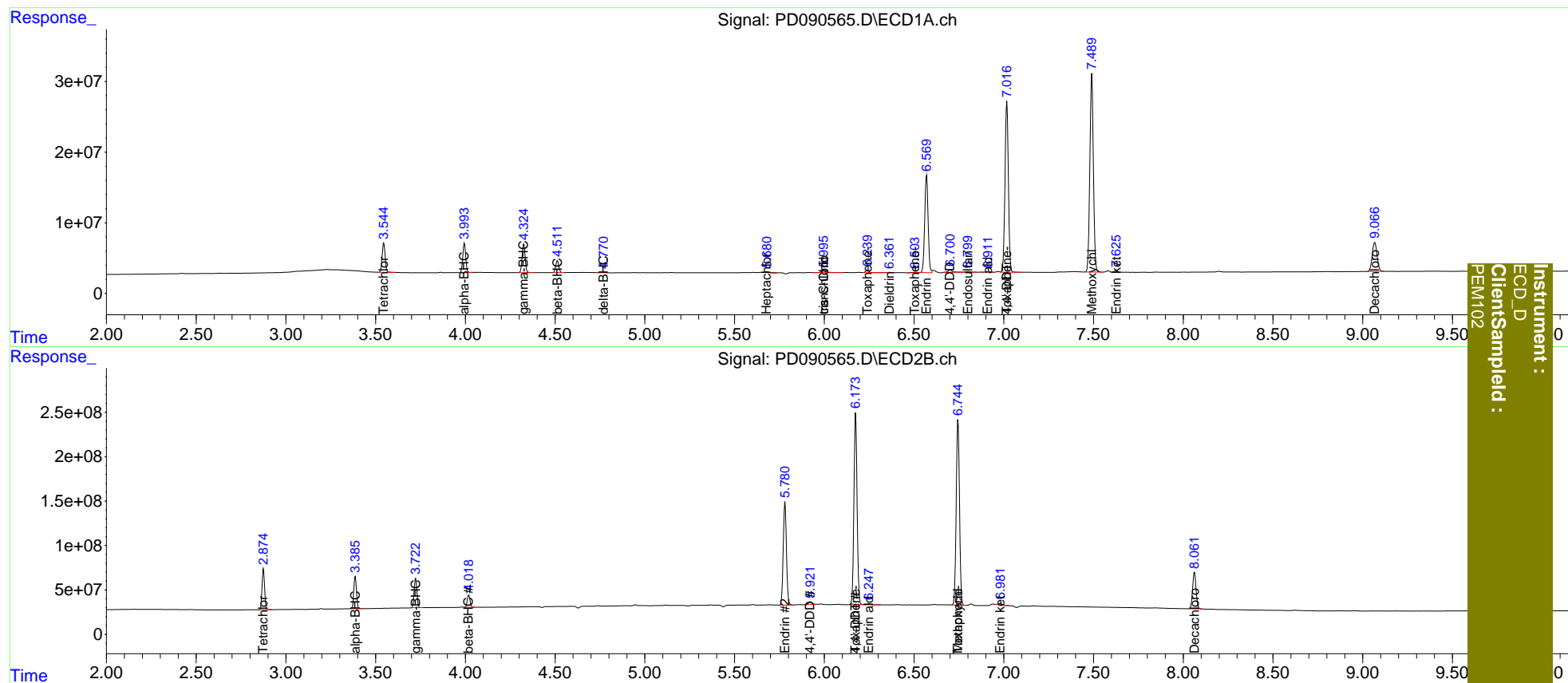
	Compound	RT#1	RT#2	Resp#1	Resp#2	ng/ml	ng/ml
-----							
System Monitoring Compounds							
1)	SA Tetrachlo...	3.545	2.875	47620848	457.5E6	18.269	20.074
27)	SA Decachlor...	9.067	8.063	76589342	552.5E6	19.257	22.298
Target Compounds							
2)	A alpha-BHC	3.995	3.387	46959366	377.8E6	8.603	10.199
3)	MA gamma-BHC...	4.325	3.723	46810674	353.0E6	8.836	10.363
6)	B beta-BHC	4.513	4.019	20167790	148.9E6	9.104	9.897
7)	B delta-BHC	4.771	0.000	1012185	0	0.206	N.D. #
8)	B Heptachlo...	5.679	0.000	3184737	0	0.668	N.D. #
10)	B trans-Chl...	5.997f	0.000	4375593	0	0.956	N.D. #
11)	B cis-Chlor...	5.997	0.000	4375593	0	0.924	N.D. #
12)	B 4,4'-DDE	6.192	0.000	288889	0	<MDL	N.D. #
13)	MA Dieldrin	6.363	0.000	494186	0	0.103	N.D. #
14)	MA Endrin	6.570	5.781	181.8E6	1438.1E6	44.821	48.109
15)	B Endosulfa...	6.801	0.000	2007152	0	0.522	N.D. #
16)	A 4,4'-DDD	6.701	5.922	6276311	41848116	1.868	1.589
17)	MA 4,4'-DDT	7.017	6.175	315.7E6	2623.1E6	90.751	96.287
18)	B Endrin al...	6.913	6.249	719688	10577515	0.228	0.492 #
20)	A Methoxychlor	7.491	6.745	382.6E6	2650.8E6	206.685	222.004
21)	B Endrin ke...	7.627	6.982	2505822	16734747	0.613	0.588
22)	Toxaphene-1	6.240	0.000	4145234	0	132.093	N.D. #
23)	Toxaphene-2	6.504f	6.175f	1670104	2623.1E6	38.227	13549.078 #
24)	Toxaphene-3	7.017f	6.745	315.7E6	2650.8E6	2727.558	4402.817 #

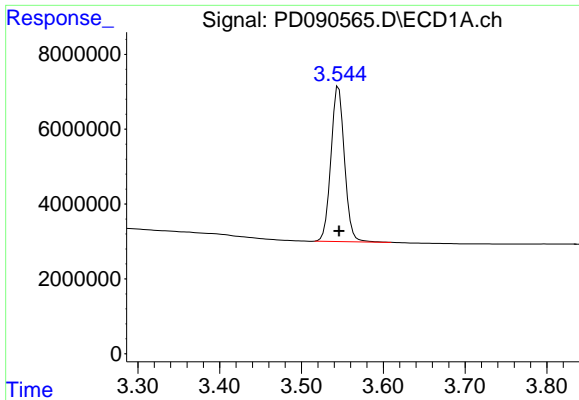
(f)=RT Delta > 1/2 Window (#)=Amounts differ by > 25% (m)=manual int.

Data Path : Z:\pestpcbsrv\HPCHEM1\ECD\_D\Data\PD101325\  
 Data File : PD090565.D  
 Signal(s) : Signal #1: ECD1A.ch Signal #2: ECD2B.ch  
 Acq On : 13 Oct 2025 15:51  
 Operator : AR\AJ  
 Sample : PEM114  
 Misc :  
 ALS Vial : 3 Sample Multiplier: 1

Integration File signal 1: autoint1.e  
 Integration File signal 2: autoint2.e  
 Quant Time: Oct 14 05:54:36 2025  
 Quant Method : Z:\pestpcbsrv\HPCHEM1\ECD\_D\Method\PD091725CLP.M  
 Quant Title : GC Extractables  
 QLast Update : Thu Sep 18 07:48:10 2025  
 Response via : Initial Calibration  
 Integrator: ChemStation

Volume Inj. : 1 µl  
 Signal #1 Phase : ZB-MR1 Signal #2 Phase: ZB-MR2  
 Signal #1 Info : 30M x 0.32mm x0.5 Signal #2 Info : 30M x 0.32mm x 0.25µm

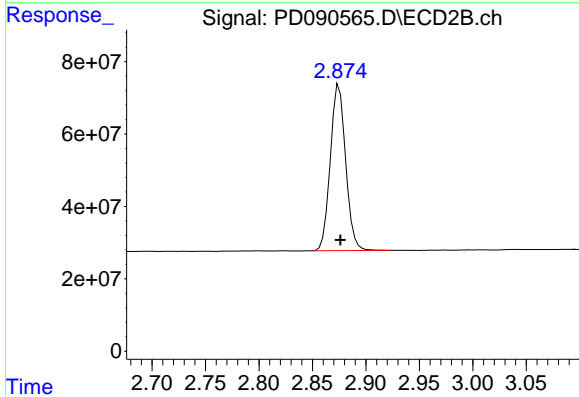




#1 Tetrachloro-m-xylene

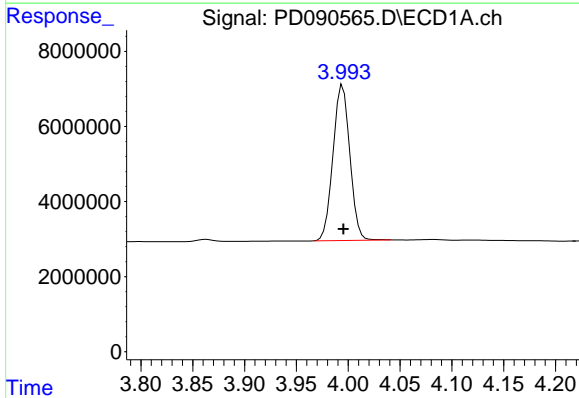
R.T.: 3.545 min  
 Delta R.T.: 0.000 min  
 Response: 47620848  
 Conc: 18.27 ng/ml

Instrument :  
 ECD\_D  
 ClientSampleId :  
 PEM102



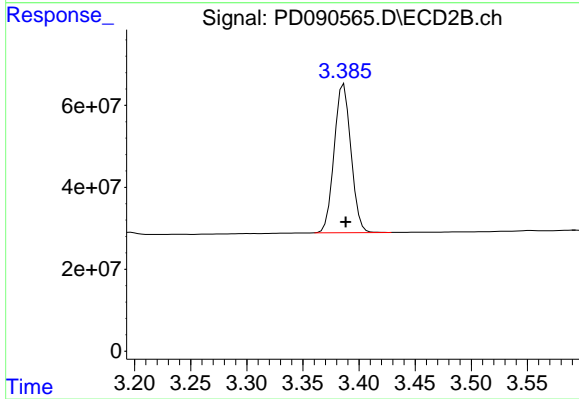
#1 Tetrachloro-m-xylene

R.T.: 2.875 min  
 Delta R.T.: -0.001 min  
 Response: 457534269  
 Conc: 20.07 ng/ml



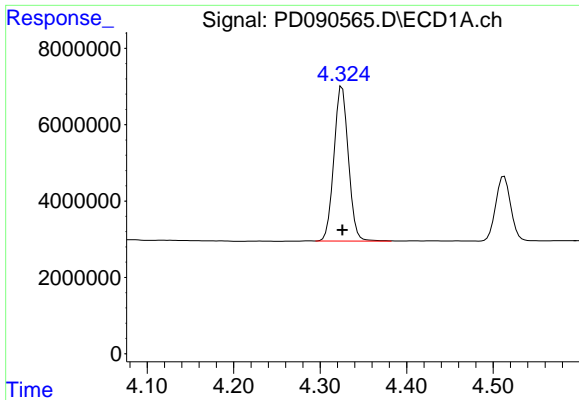
#2 alpha-BHC

R.T.: 3.995 min  
 Delta R.T.: 0.000 min  
 Response: 46959366  
 Conc: 8.60 ng/ml



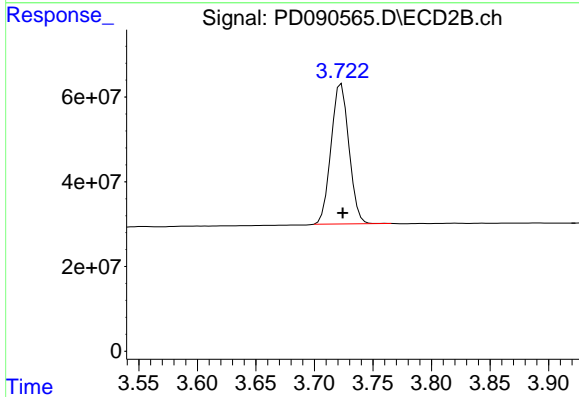
#2 alpha-BHC

R.T.: 3.387 min  
 Delta R.T.: -0.002 min  
 Response: 377846624  
 Conc: 10.20 ng/ml

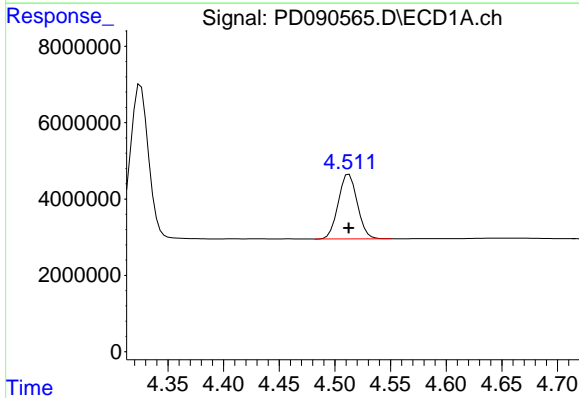


#3 gamma-BHC (Lindane)  
 R.T.: 4.325 min  
 Delta R.T.: 0.000 min  
 Response: 46810674  
 Conc: 8.84 ng/ml

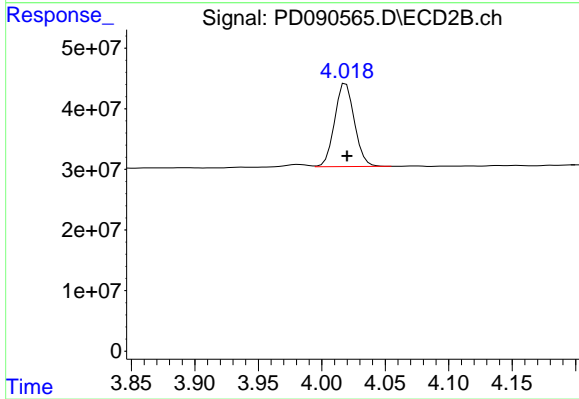
Instrument :  
 ECD\_D  
 ClientSampleId :  
 PEM102



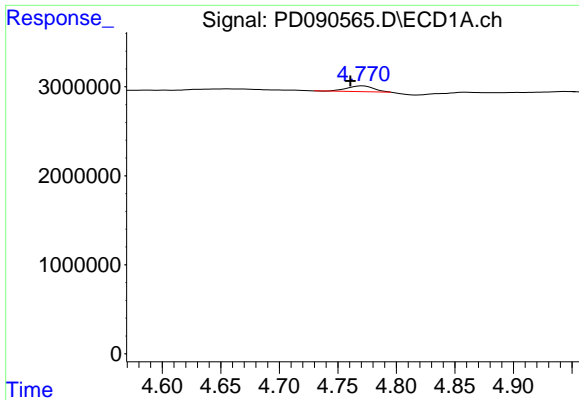
#3 gamma-BHC (Lindane)  
 R.T.: 3.723 min  
 Delta R.T.: -0.001 min  
 Response: 352957912  
 Conc: 10.36 ng/ml



#6 beta-BHC  
 R.T.: 4.513 min  
 Delta R.T.: 0.000 min  
 Response: 20167790  
 Conc: 9.10 ng/ml



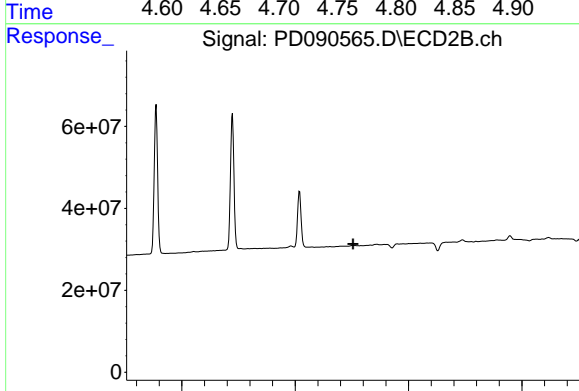
#6 beta-BHC  
 R.T.: 4.019 min  
 Delta R.T.: 0.000 min  
 Response: 148902526  
 Conc: 9.90 ng/ml



#7 delta-BHC

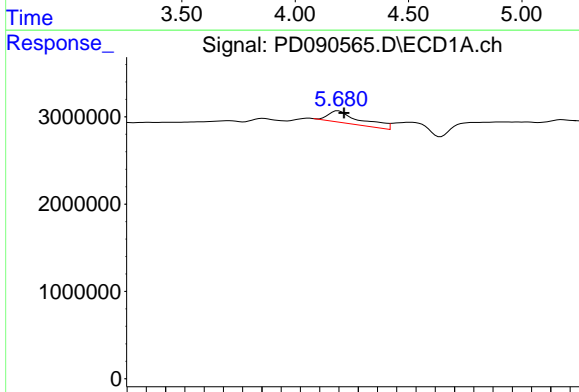
R.T.: 4.771 min  
 Delta R.T.: 0.010 min  
 Response: 1012185  
 Conc: 0.21 ng/ml

Instrument :  
 ECD\_D  
 ClientSampleId :  
 PEM102



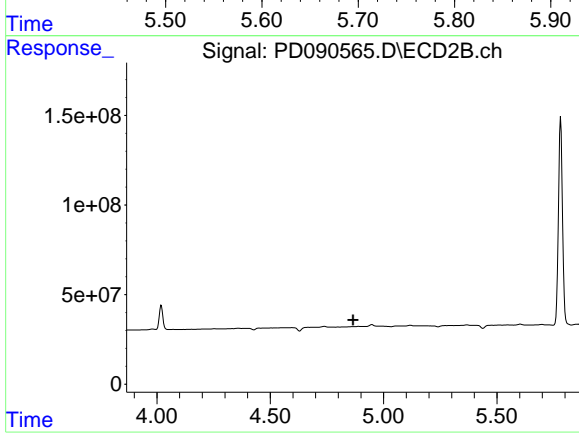
#7 delta-BHC

R.T.: 0.000 min  
 Exp R.T. : 4.256 min  
 Response: 0  
 Conc: N.D.



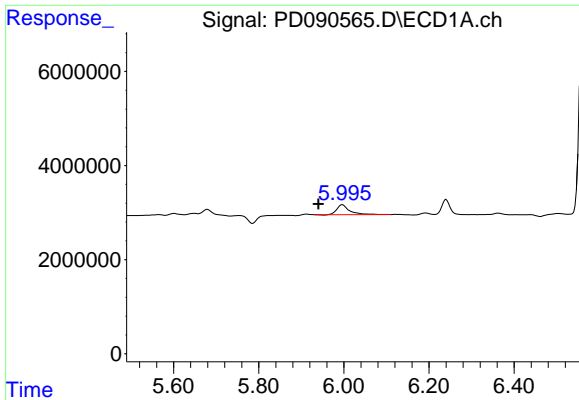
#8 Heptachlor epoxide

R.T.: 5.679 min  
 Delta R.T.: -0.006 min  
 Response: 3184737  
 Conc: 0.67 ng/ml



#8 Heptachlor epoxide

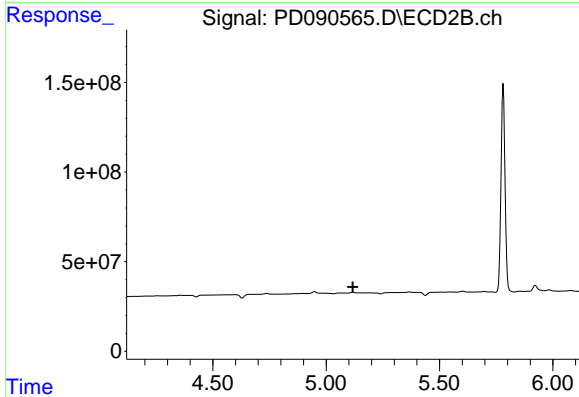
R.T.: 0.000 min  
 Exp R.T. : 4.865 min  
 Response: 0  
 Conc: N.D.



#10 trans-Chlordane

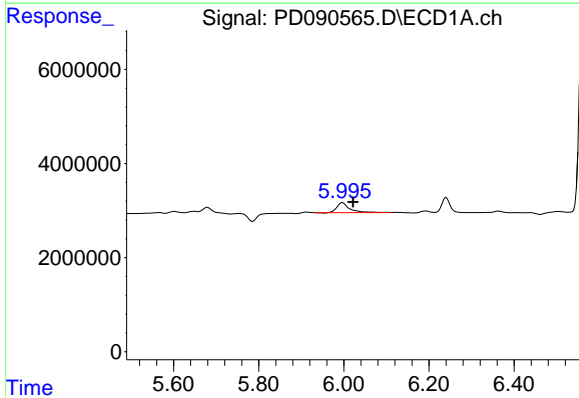
R.T.: 5.997 min  
 Delta R.T.: 0.056 min  
 Response: 4375593  
 Conc: 0.96 ng/ml

Instrument :  
 ECD\_D  
 ClientSampleId :  
 PEM102



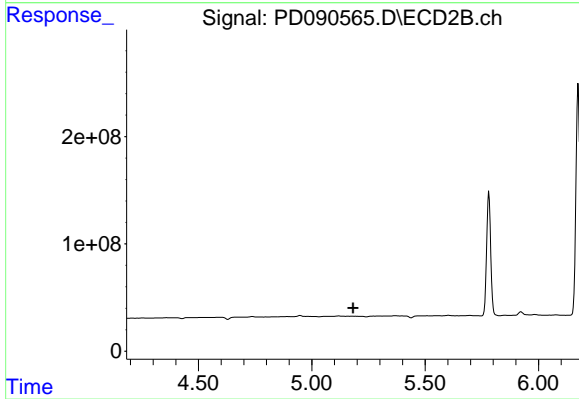
#10 trans-Chlordane

R.T.: 0.000 min  
 Exp R.T. : 5.118 min  
 Response: 0  
 Conc: N.D.



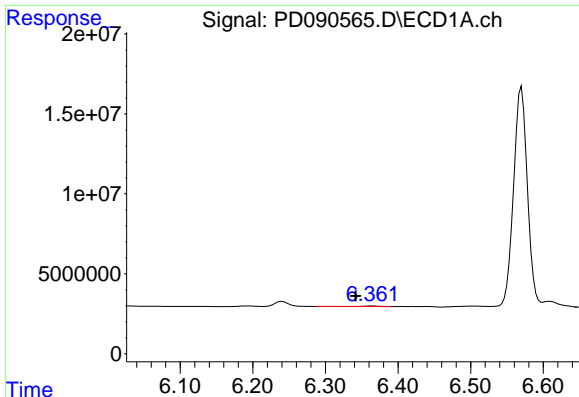
#11 cis-Chlordane

R.T.: 5.997 min  
 Delta R.T.: -0.025 min  
 Response: 4375593  
 Conc: 0.92 ng/ml



#11 cis-Chlordane

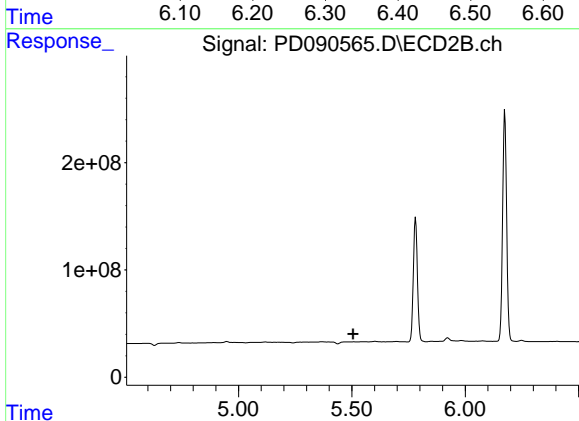
R.T.: 0.000 min  
 Exp R.T. : 5.183 min  
 Response: 0  
 Conc: N.D.



#13 Dieldrin

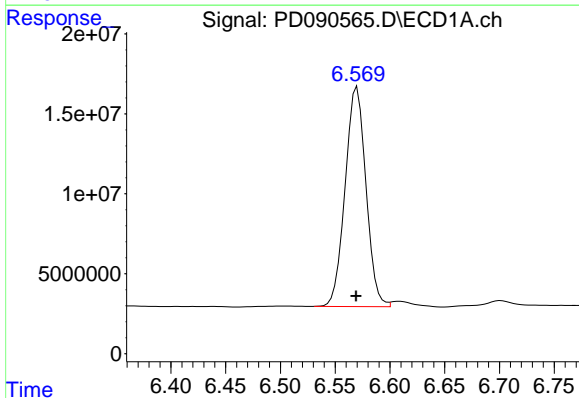
R.T.: 6.363 min  
 Delta R.T.: 0.022 min  
 Response: 494186  
 Conc: 0.10 ng/ml

Instrument :  
 ECD\_D  
 ClientSampleId :  
 PEM102



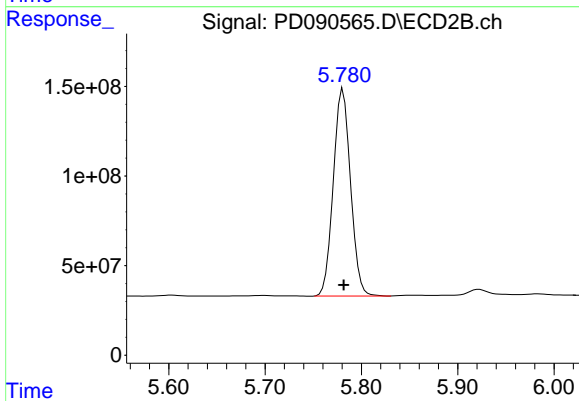
#13 Dieldrin

R.T.: 0.000 min  
 Exp R.T. : 5.505 min  
 Response: 0  
 Conc: N.D.



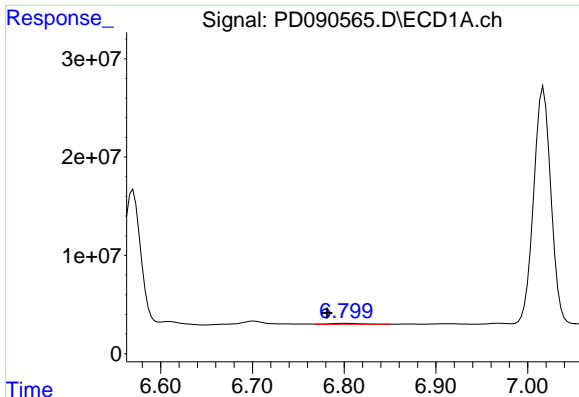
#14 Endrin

R.T.: 6.570 min  
 Delta R.T.: 0.001 min  
 Response: 181766765  
 Conc: 44.82 ng/ml



#14 Endrin

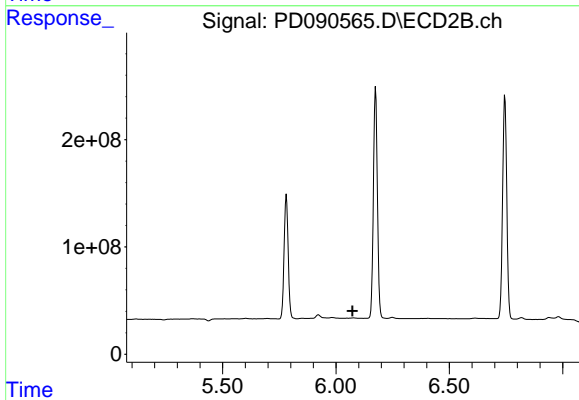
R.T.: 5.781 min  
 Delta R.T.: 0.000 min  
 Response: 1438144742  
 Conc: 48.11 ng/ml



#15 Endosulfan II

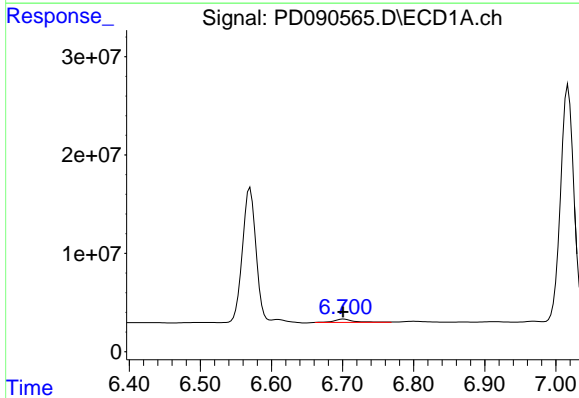
R.T.: 6.801 min  
 Delta R.T.: 0.020 min  
 Response: 2007152  
 Conc: 0.52 ng/ml

Instrument :  
 ECD\_D  
 ClientSampleId :  
 PEM102



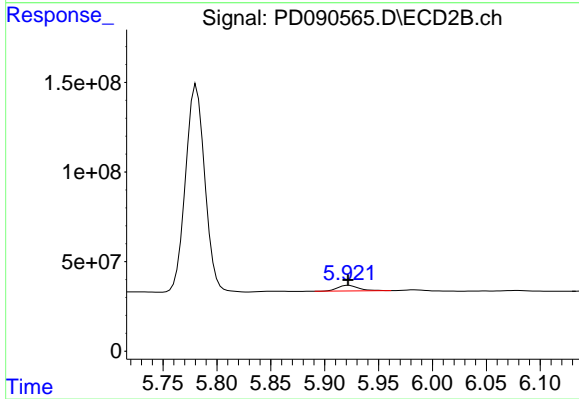
#15 Endosulfan II

R.T.: 0.000 min  
 Exp R.T. : 6.073 min  
 Response: 0  
 Conc: N.D.



#16 4,4'-DDD

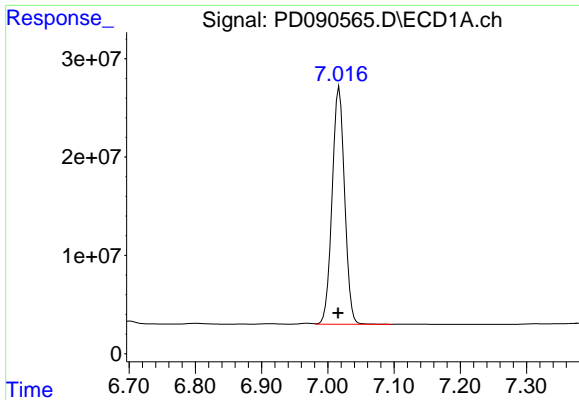
R.T.: 6.701 min  
 Delta R.T.: 0.000 min  
 Response: 6276311  
 Conc: 1.87 ng/ml



#16 4,4'-DDD

R.T.: 5.922 min  
 Delta R.T.: 0.000 min  
 Response: 41848116  
 Conc: 1.59 ng/ml

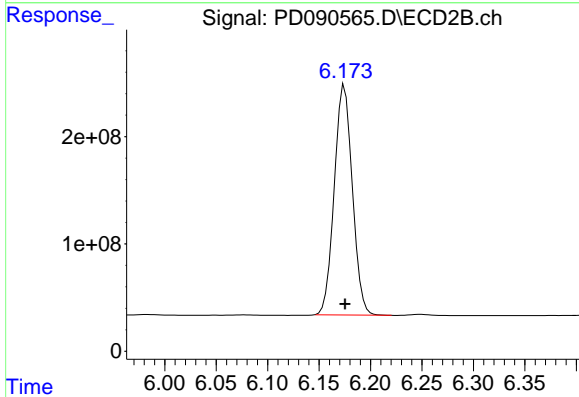




#17 4,4'-DDT

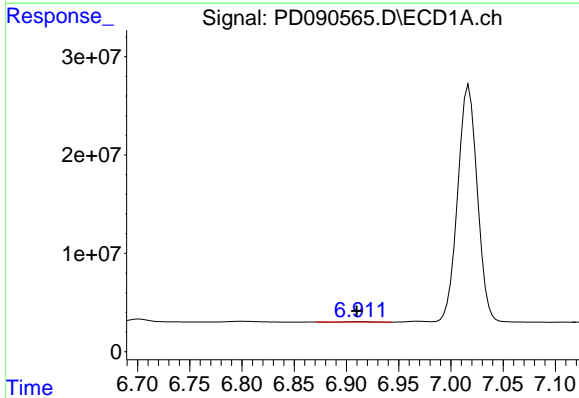
R.T.: 7.017 min  
 Delta R.T.: 0.002 min  
 Response: 315658940  
 Conc: 90.75 ng/ml

Instrument :  
 ECD\_D  
 ClientSampleId :  
 PEM102



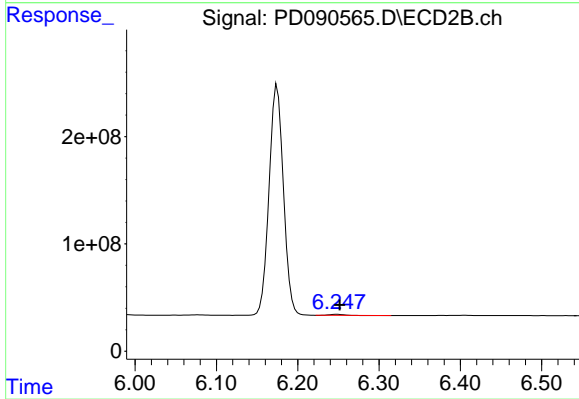
#17 4,4'-DDT

R.T.: 6.175 min  
 Delta R.T.: 0.000 min  
 Response: 2623111380  
 Conc: 96.29 ng/ml



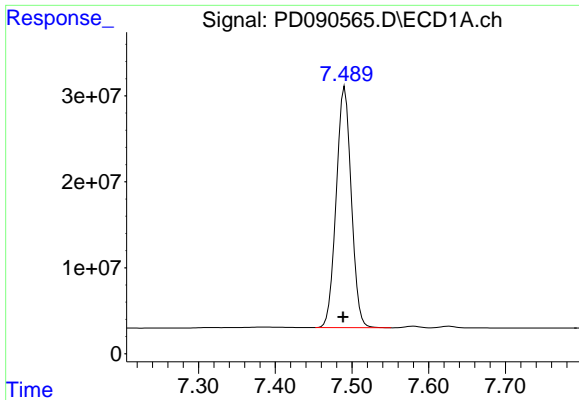
#18 Endrin aldehyde

R.T.: 6.913 min  
 Delta R.T.: 0.003 min  
 Response: 719688  
 Conc: 0.23 ng/ml



#18 Endrin aldehyde

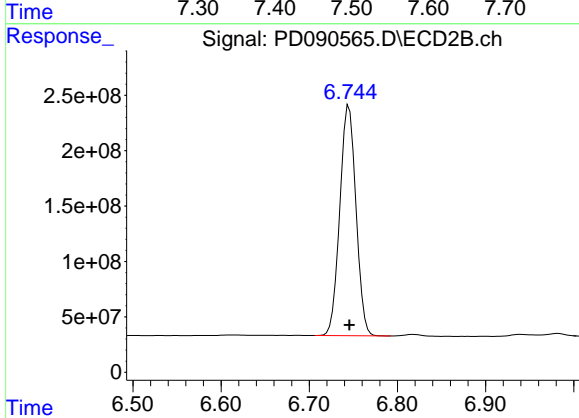
R.T.: 6.249 min  
 Delta R.T.: -0.003 min  
 Response: 10577515  
 Conc: 0.49 ng/ml



#20 Methoxychlor

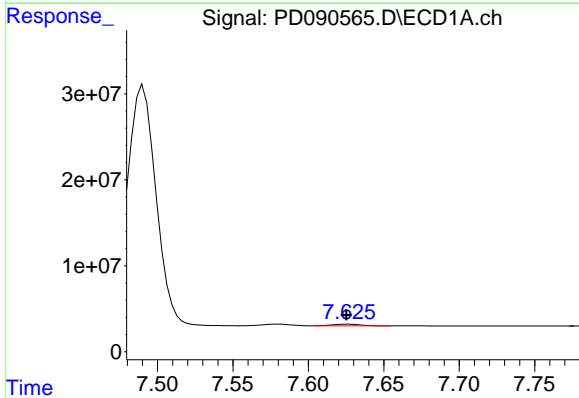
R.T.: 7.491 min  
 Delta R.T.: 0.002 min  
 Response: 382642638  
 Conc: 206.68 ng/ml

Instrument :  
 ECD\_D  
 ClientSampleId :  
 PEM102



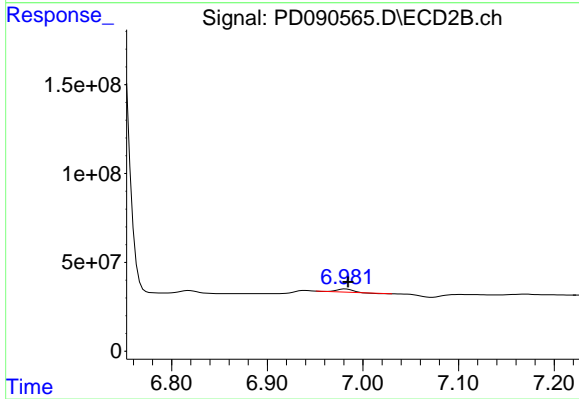
#20 Methoxychlor

R.T.: 6.745 min  
 Delta R.T.: 0.000 min  
 Response: 2650814184  
 Conc: 222.00 ng/ml



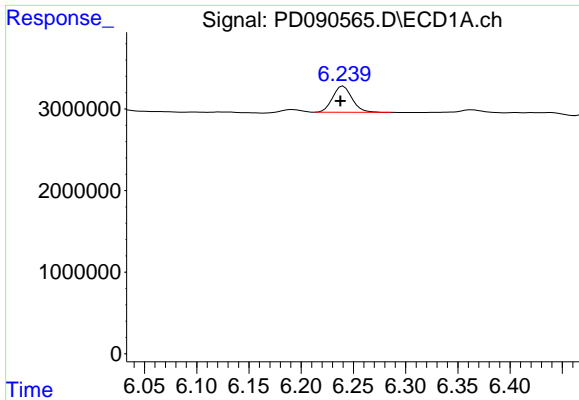
#21 Endrin ketone

R.T.: 7.627 min  
 Delta R.T.: 0.001 min  
 Response: 2505822  
 Conc: 0.61 ng/ml



#21 Endrin ketone

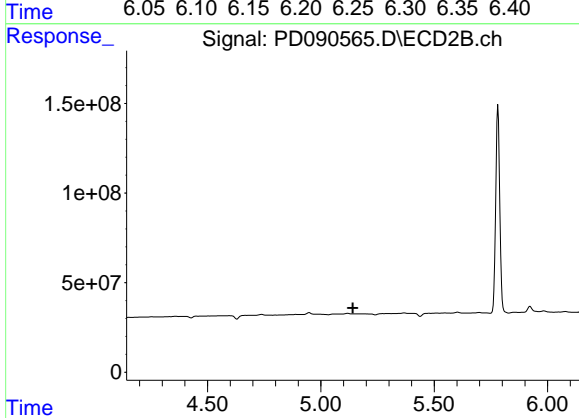
R.T.: 6.982 min  
 Delta R.T.: -0.002 min  
 Response: 16734747  
 Conc: 0.59 ng/ml



#22 Toxaphene-1

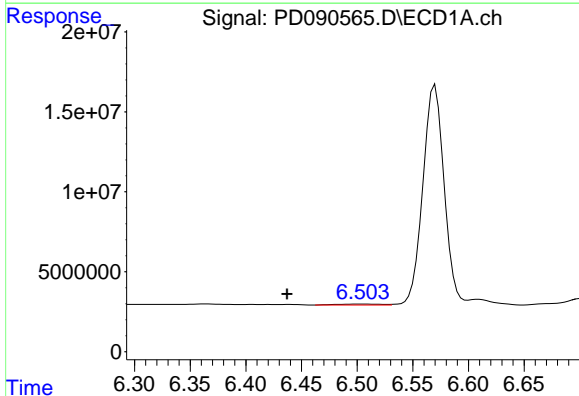
R.T.: 6.240 min  
 Delta R.T.: 0.003 min  
 Response: 4145234  
 Conc: 132.09 ng/ml

Instrument :  
 ECD\_D  
 ClientSampleId :  
 PEM102



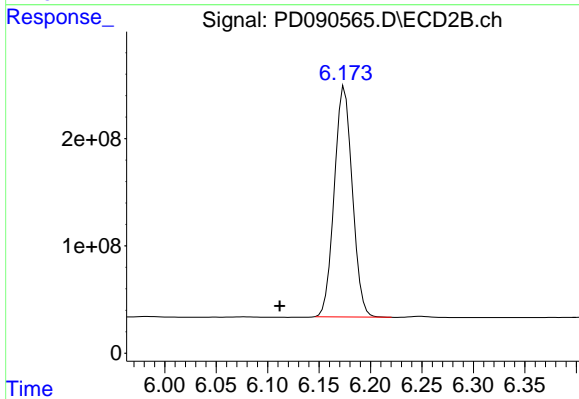
#22 Toxaphene-1

R.T.: 0.000 min  
 Exp R.T. : 5.141 min  
 Response: 0  
 Conc: N.D.



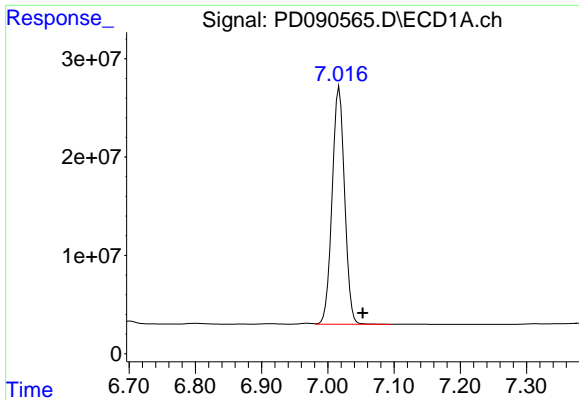
#23 Toxaphene-2

R.T.: 6.504 min  
 Delta R.T.: 0.067 min  
 Response: 1670104  
 Conc: 38.23 ng/ml



#23 Toxaphene-2

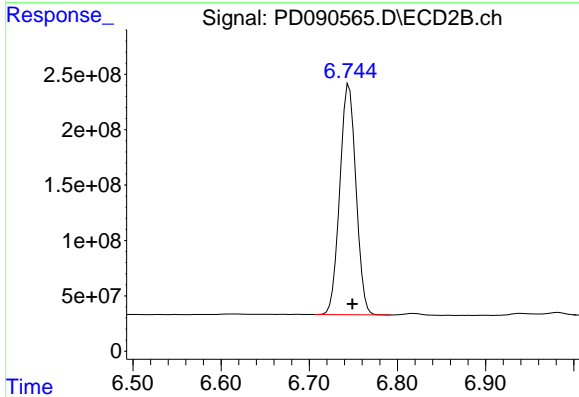
R.T.: 6.175 min  
 Delta R.T.: 0.063 min  
 Response: 2623111380  
 Conc: 13549.08 ng/ml



#24 Toxaphene-3

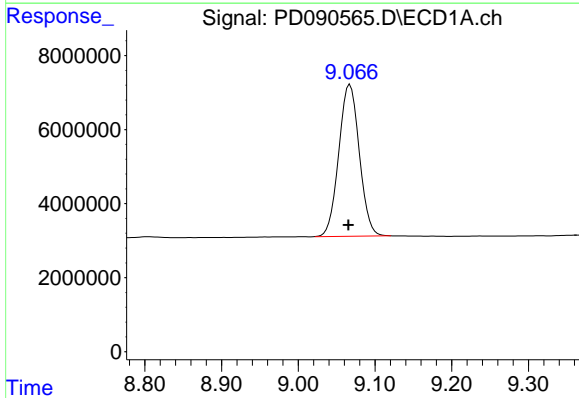
R.T.: 7.017 min  
 Delta R.T.: -0.035 min  
 Response: 315658940  
 Conc: 2727.56 ng/ml

Instrument :  
 ECD\_D  
 ClientSampleId :  
 PEM102



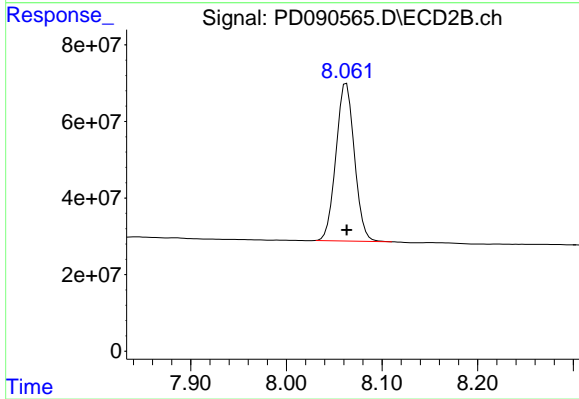
#24 Toxaphene-3

R.T.: 6.745 min  
 Delta R.T.: -0.004 min  
 Response: 2650814184  
 Conc: 4402.82 ng/ml



#27 Decachlorobiphenyl

R.T.: 9.067 min  
 Delta R.T.: 0.002 min  
 Response: 76589342  
 Conc: 19.26 ng/ml



#27 Decachlorobiphenyl

R.T.: 8.063 min  
 Delta R.T.: 0.000 min  
 Response: 552510518  
 Conc: 22.30 ng/ml