

Data Path : Z:\pestpcbsrv\HPCHEM1\ECD_D\Data\PD101325\
 Data File : PD090568.D
 Signal(s) : Signal #1: ECD1A.ch Signal #2: ECD2B.ch
 Acq On : 13 Oct 2025 16:32
 Operator : AR\AJ
 Sample : INDA355
 Misc :
 ALS Vial : 5 Sample Multiplier: 1

Instrument :
 ECD_D
 ClientSampleId :
 INDA3158

Integration File signal 1: autoint1.e
 Integration File signal 2: autoint2.e
 Quant Time: Oct 14 05:55:47 2025
 Quant Method : Z:\pestpcbsrv\HPCHEM1\ECD_D\Method\PD091725CLP.M
 Quant Title : GC Extractables
 QLast Update : Thu Sep 18 07:48:10 2025
 Response via : Initial Calibration
 Integrator: ChemStation

Volume Inj. : 1 µl
 Signal #1 Phase : ZB-MR2 Signal #2 Phase: ZB-MR2
 Signal #1 Info : 30M x 0.32mm x0.5 Signal #2 Info : 30M x 0.32mm x 0.25µm

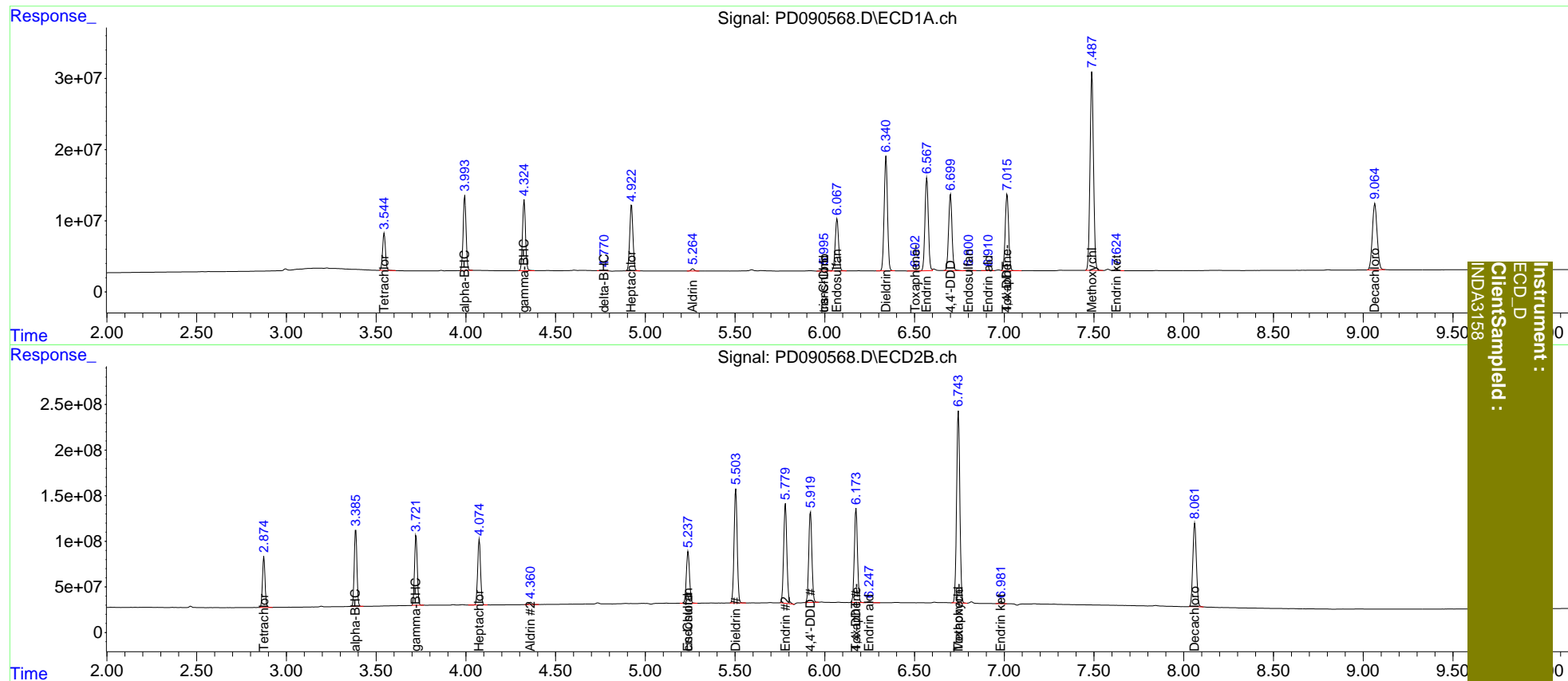
Compound	RT#1	RT#2	Resp#1	Resp#2	ng/ml	ng/ml
System Monitoring Compounds						
1) SA Tetrachlo...	3.545	2.875	58433236	556.2E6	22.417	24.401
27) SA Decachlor...	9.065	8.062	172.4E6	1260.4E6	43.351	50.864
Target Compounds						
2) A alpha-BHC	3.994	3.387	118.4E6	876.4E6	21.700	23.656
3) MA gamma-BHC...	4.325	3.723	114.6E6	804.7E6	21.627	23.627
4) MA Heptachlor	4.923	4.075	116.4E6	813.7E6	22.009	23.141
5) MB Aldrin	5.265	4.361	3859280	30427895	0.753	0.897
7) B delta-BHC	4.772	0.000	713138	0	0.145	N.D. #
8) B Heptachlo...	5.647f	0.000	179827	0	<MDL	N.D. #
9) A Endosulfan I	6.069	5.239	96648798	697.7E6	21.529	23.731
10) B trans-Chl...	5.996f	0.000	6425995	0	1.405	N.D. #
11) B cis-Chlor...	5.996	5.239f	6425995	697.7E6	1.357	22.204 #
13) MA Dieldrin	6.341	5.504	206.2E6	1510.1E6	42.808	47.085
14) MA Endrin	6.569	5.781	171.3E6	1352.8E6	42.238	45.254
15) B Endosulfa...	6.802	0.000	1802663	0	0.469	N.D. #
16) A 4,4'-DDD	6.701	5.921	140.9E6	1204.2E6	41.935	45.710
17) MA 4,4'-DDT	7.016	6.175	142.4E6	1245.6E6	40.934	45.721
18) B Endrin al...	6.912	6.248	1104152	14211669	0.350	0.662 #
20) A Methoxychlor	7.489	6.745	375.4E6	2646.9E6	202.793	221.672
21) B Endrin ke...	7.625	6.982	3000290	29194271	0.734	1.026 #
23) Toxaphene-2	6.504f	6.175f	603729	1245.6E6	13.819	6433.652 #
24) Toxaphene-3	7.016f	6.745	142.4E6	2646.9E6	1230.293	4396.249 #

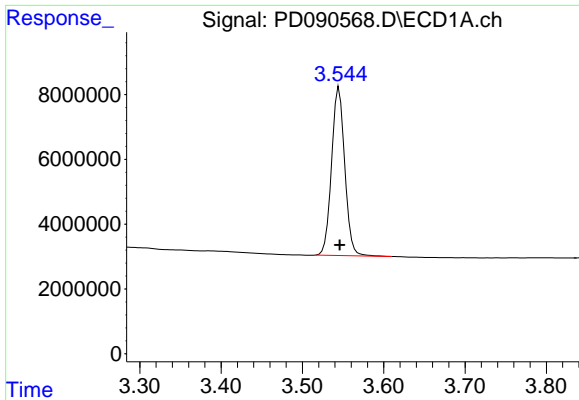
(f)=RT Delta > 1/2 Window (#)=Amounts differ by > 25% (m)=manual int.

Data Path : Z:\pestpcbsrv\HPCHEM1\ECD_D\Data\PD101325\
 Data File : PD090568.D
 Signal(s) : Signal #1: ECD1A.ch Signal #2: ECD2B.ch
 Acq On : 13 Oct 2025 16:32
 Operator : AR\AJ
 Sample : INDA355
 Misc :
 ALS Vial : 5 Sample Multiplier: 1

Integration File signal 1: autoint1.e
 Integration File signal 2: autoint2.e
 Quant Time: Oct 14 05:55:47 2025
 Quant Method : Z:\pestpcbsrv\HPCHEM1\ECD_D\Method\PD091725CLP.M
 Quant Title : GC Extractables
 QLast Update : Thu Sep 18 07:48:10 2025
 Response via : Initial Calibration
 Integrator: ChemStation

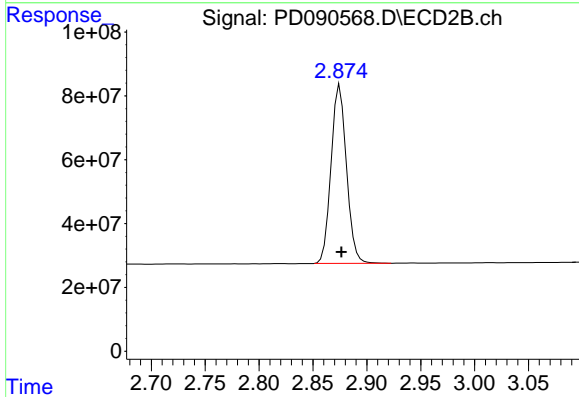
Volume Inj. : 1 µl
 Signal #1 Phase : ZB-MR1 Signal #2 Phase: ZB-MR2
 Signal #1 Info : 30M x 0.32mm x0.5 Signal #2 Info : 30M x 0.32mm x 0.25µm



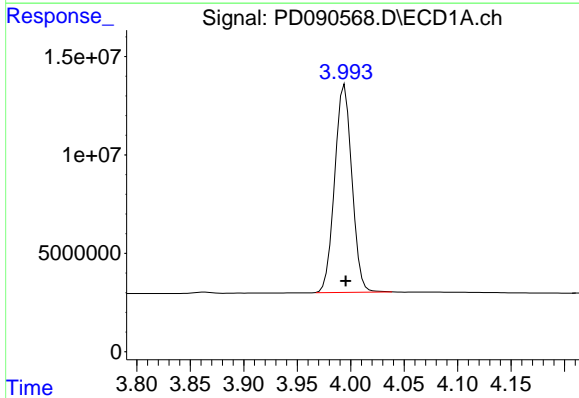


#1 Tetrachloro-m-xylene
 R.T.: 3.545 min
 Delta R.T.: 0.000 min
 Response: 58433236
 Conc: 22.42 ng/ml

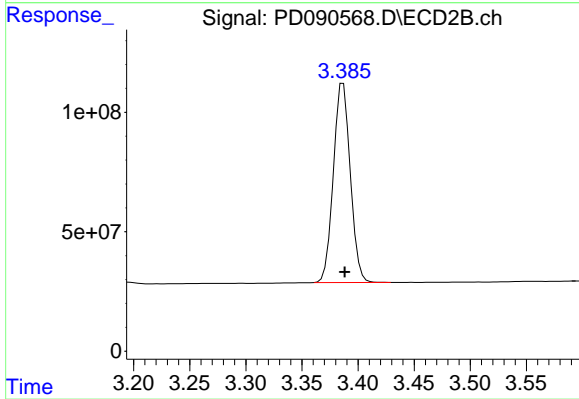
Instrument :
 ECD_D
 ClientSampleId :
 INDA3158



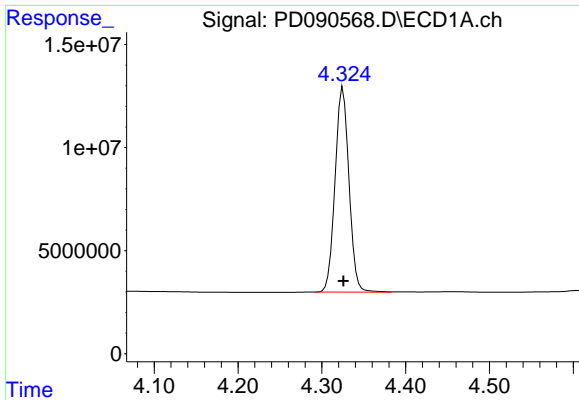
#1 Tetrachloro-m-xylene
 R.T.: 2.875 min
 Delta R.T.: -0.001 min
 Response: 556151974
 Conc: 24.40 ng/ml



#2 alpha-BHC
 R.T.: 3.994 min
 Delta R.T.: 0.000 min
 Response: 118447036
 Conc: 21.70 ng/ml



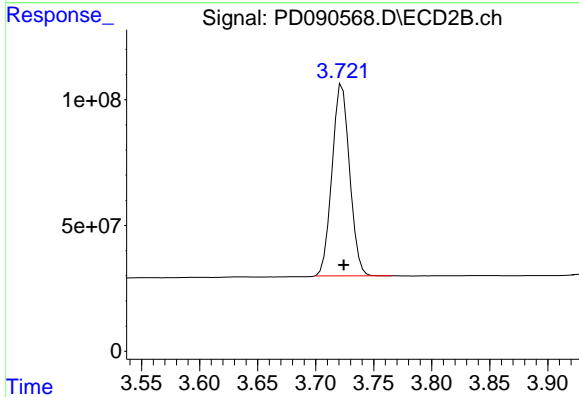
#2 alpha-BHC
 R.T.: 3.387 min
 Delta R.T.: -0.001 min
 Response: 876439986
 Conc: 23.66 ng/ml



#3 gamma-BHC (Lindane)

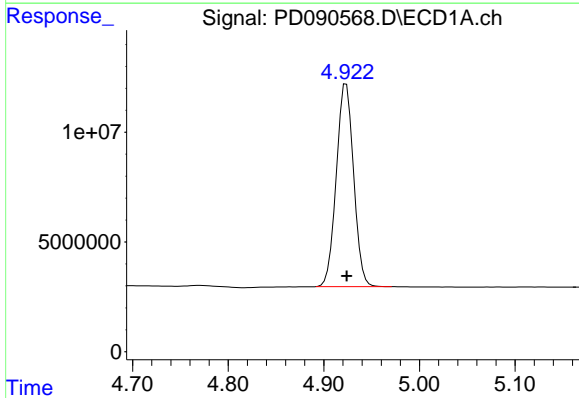
R.T.: 4.325 min
 Delta R.T.: 0.000 min
 Response: 114570972
 Conc: 21.63 ng/ml

Instrument :
 ECD_D
 ClientSampleId :
 INDA3158



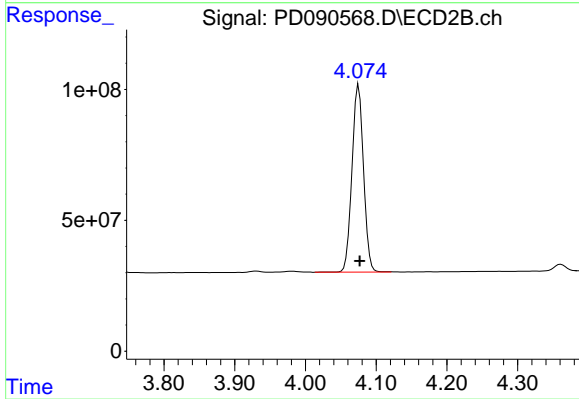
#3 gamma-BHC (Lindane)

R.T.: 3.723 min
 Delta R.T.: -0.001 min
 Response: 804677197
 Conc: 23.63 ng/ml



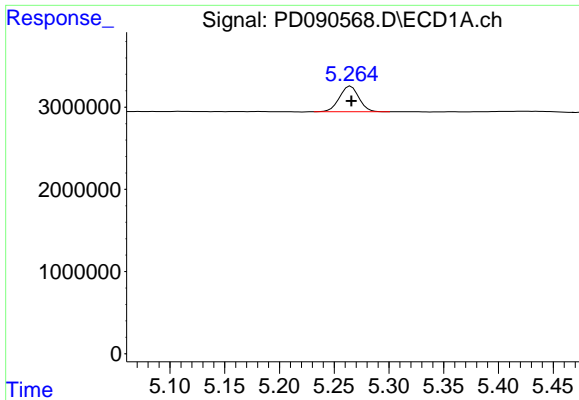
#4 Heptachlor

R.T.: 4.923 min
 Delta R.T.: 0.000 min
 Response: 116441522
 Conc: 22.01 ng/ml



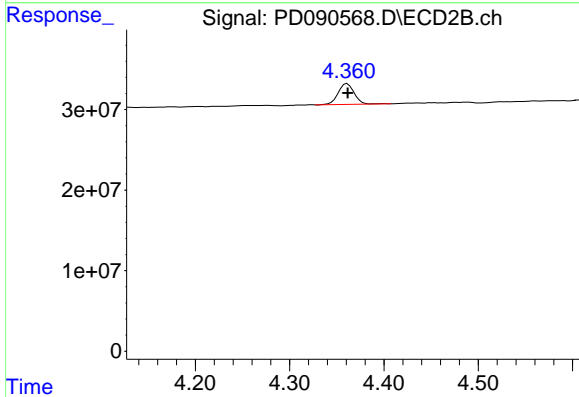
#4 Heptachlor

R.T.: 4.075 min
 Delta R.T.: -0.001 min
 Response: 813734055
 Conc: 23.14 ng/ml

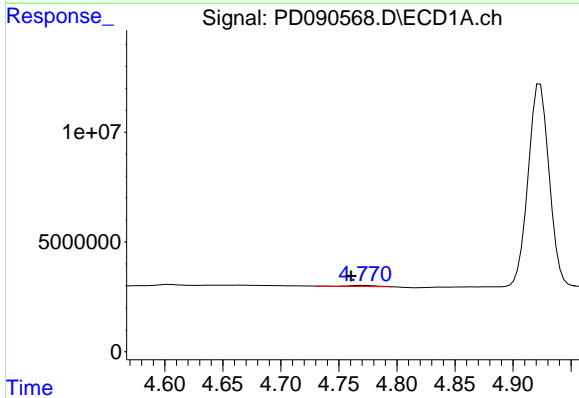


#5 Aldrin
 R.T.: 5.265 min
 Delta R.T.: 0.000 min
 Response: 3859280
 Conc: 0.75 ng/ml

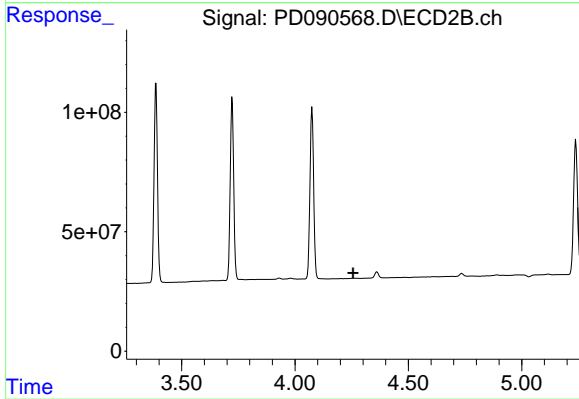
Instrument :
 ECD_D
 ClientSampleId :
 INDA3158



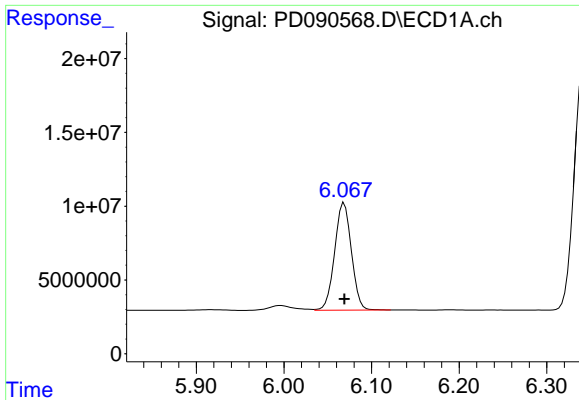
#5 Aldrin
 R.T.: 4.361 min
 Delta R.T.: 0.000 min
 Response: 30427895
 Conc: 0.90 ng/ml



#7 delta-BHC
 R.T.: 4.772 min
 Delta R.T.: 0.011 min
 Response: 713138
 Conc: 0.15 ng/ml



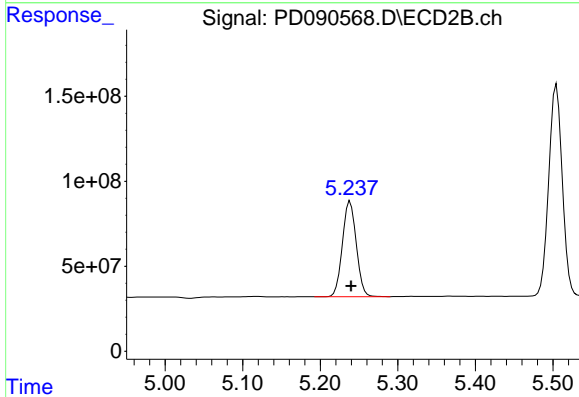
#7 delta-BHC
 R.T.: 0.000 min
 Exp R.T. : 4.256 min
 Response: 0
 Conc: N.D.



#9 Endosulfan I

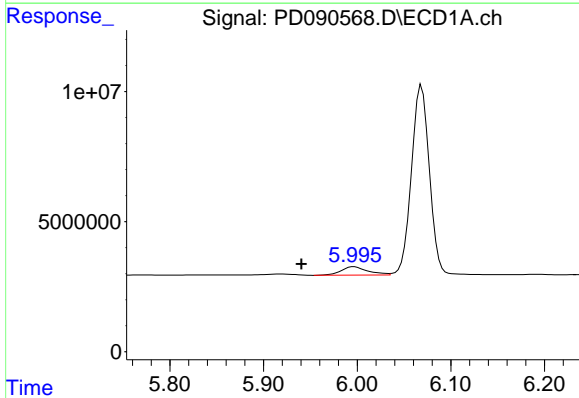
R.T.: 6.069 min
 Delta R.T.: 0.000 min
 Response: 96648798
 Conc: 21.53 ng/ml

Instrument : ECD_D
 ClientSampleId : INDA3158



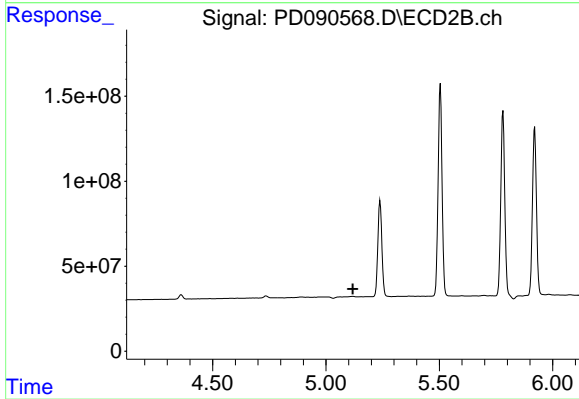
#9 Endosulfan I

R.T.: 5.239 min
 Delta R.T.: -0.001 min
 Response: 697730457
 Conc: 23.73 ng/ml



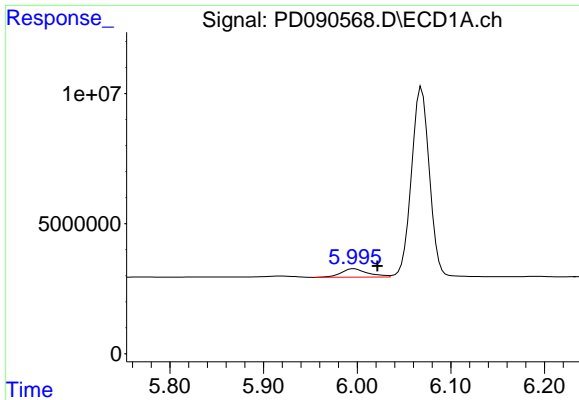
#10 trans-Chlordane

R.T.: 5.996 min
 Delta R.T.: 0.056 min
 Response: 6425995
 Conc: 1.40 ng/ml



#10 trans-Chlordane

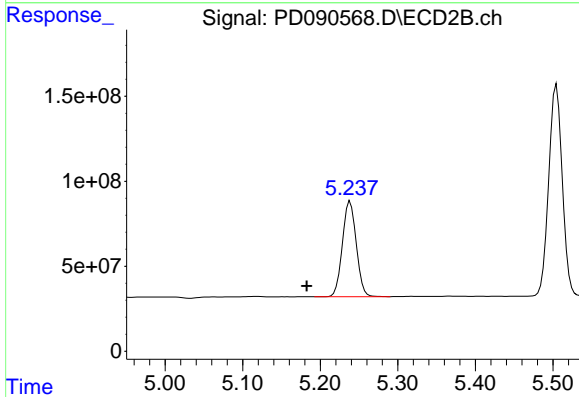
R.T.: 0.000 min
 Exp R.T. : 5.118 min
 Response: 0
 Conc: N.D.



#11 cis-Chlordane

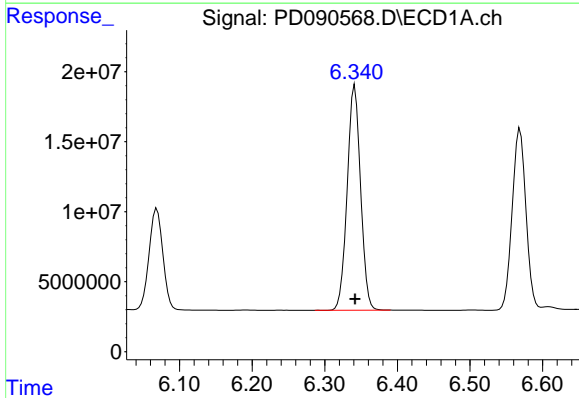
R.T.: 5.996 min
 Delta R.T.: -0.025 min
 Response: 6425995
 Conc: 1.36 ng/ml

Instrument :
 ECD_D
 ClientSampleId :
 INDA3158



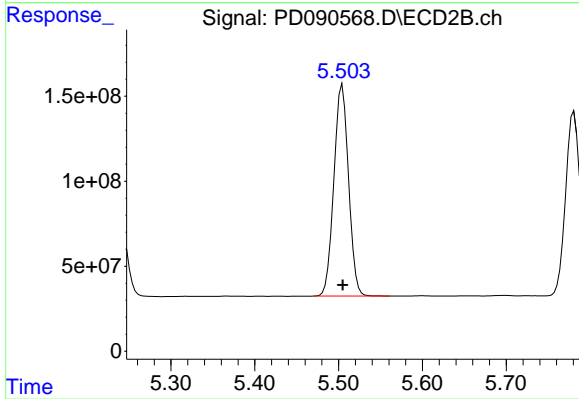
#11 cis-Chlordane

R.T.: 5.239 min
 Delta R.T.: 0.056 min
 Response: 697730457
 Conc: 22.20 ng/ml



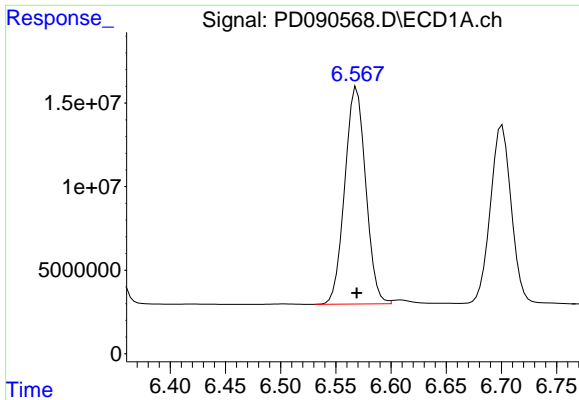
#13 Dieldrin

R.T.: 6.341 min
 Delta R.T.: 0.000 min
 Response: 206165857
 Conc: 42.81 ng/ml



#13 Dieldrin

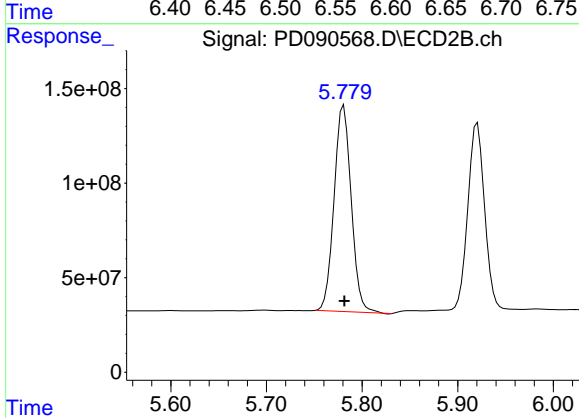
R.T.: 5.504 min
 Delta R.T.: 0.000 min
 Response: 1510102981
 Conc: 47.09 ng/ml



#14 Endrin

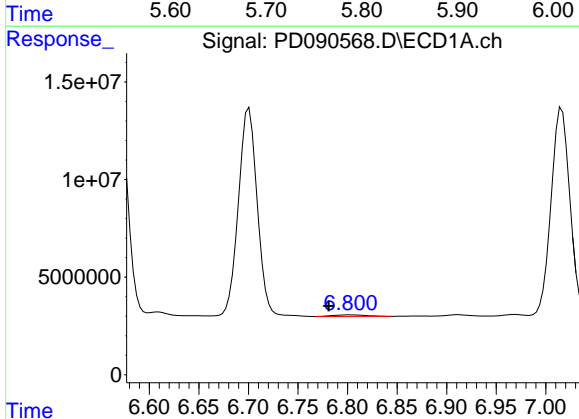
R.T.: 6.569 min
 Delta R.T.: 0.000 min
 Response: 171291269
 Conc: 42.24 ng/ml

Instrument :
 ECD_D
 ClientSampleId :
 INDA3158



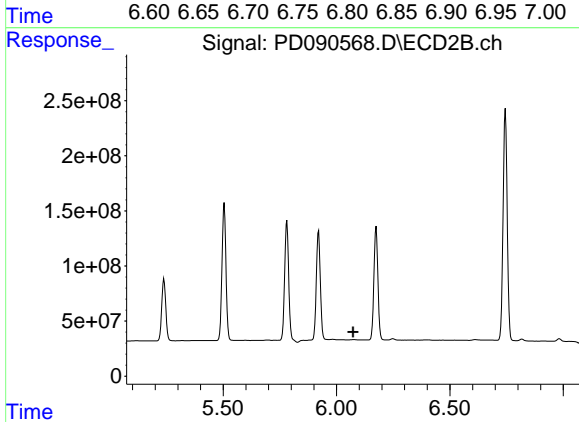
#14 Endrin

R.T.: 5.781 min
 Delta R.T.: 0.000 min
 Response: 1352793024
 Conc: 45.25 ng/ml



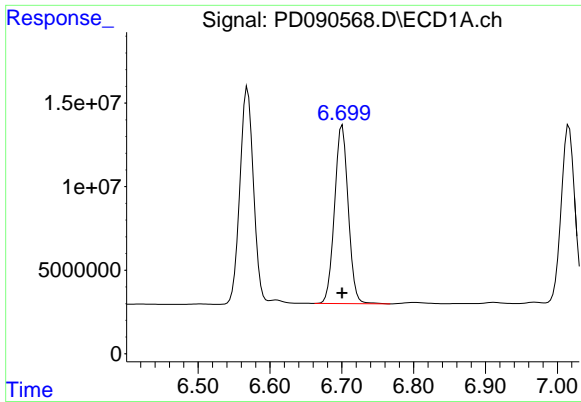
#15 Endosulfan II

R.T.: 6.802 min
 Delta R.T.: 0.021 min
 Response: 1802663
 Conc: 0.47 ng/ml



#15 Endosulfan II

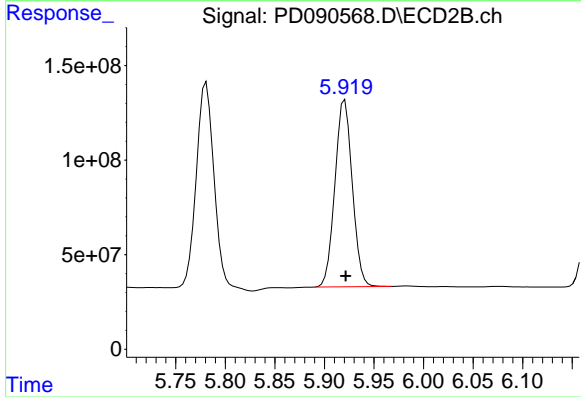
R.T.: 0.000 min
 Exp R.T. : 6.073 min
 Response: 0
 Conc: N.D.



#16 4,4'-DDD

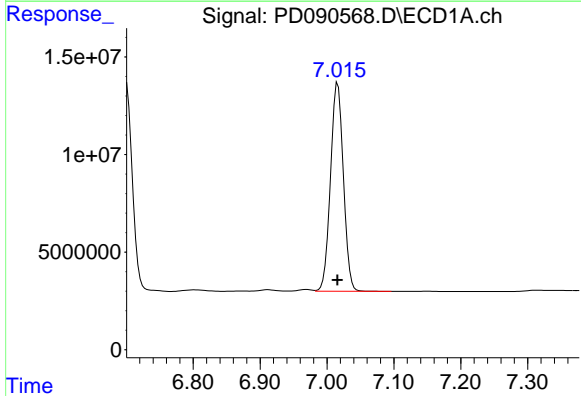
R.T.: 6.701 min
 Delta R.T.: 0.000 min
 Response: 140871961
 Conc: 41.93 ng/ml

Instrument :
 ECD_D
 ClientSampleId :
 INDA3158



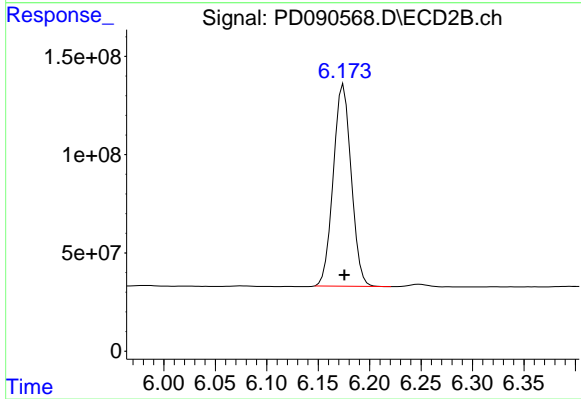
#16 4,4'-DDD

R.T.: 5.921 min
 Delta R.T.: 0.000 min
 Response: 1204193195
 Conc: 45.71 ng/ml



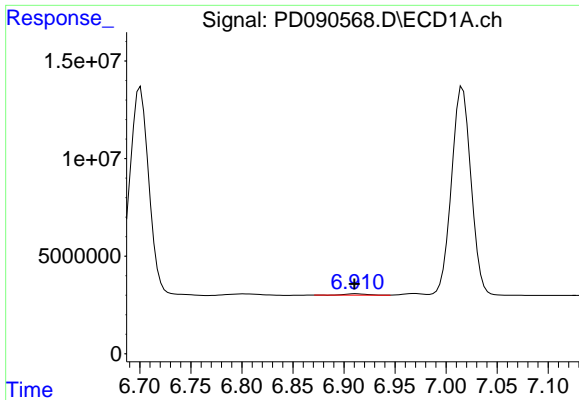
#17 4,4'-DDT

R.T.: 7.016 min
 Delta R.T.: 0.000 min
 Response: 142381215
 Conc: 40.93 ng/ml



#17 4,4'-DDT

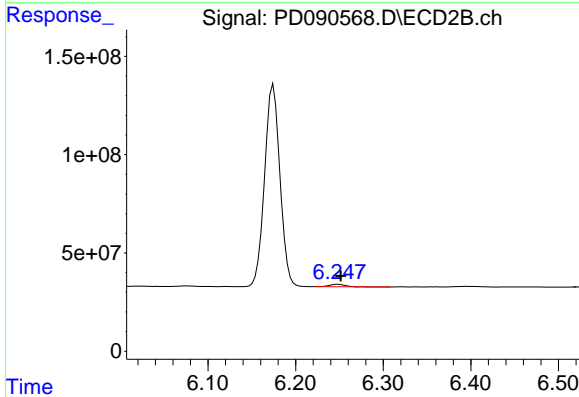
R.T.: 6.175 min
 Delta R.T.: 0.000 min
 Response: 1245559651
 Conc: 45.72 ng/ml



#18 Endrin aldehyde

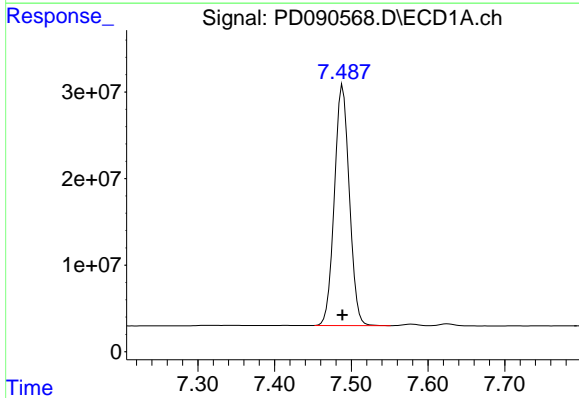
R.T.: 6.912 min
 Delta R.T.: 0.002 min
 Response: 1104152
 Conc: 0.35 ng/ml

Instrument :
 ECD_D
 ClientSampleId :
 INDA3158



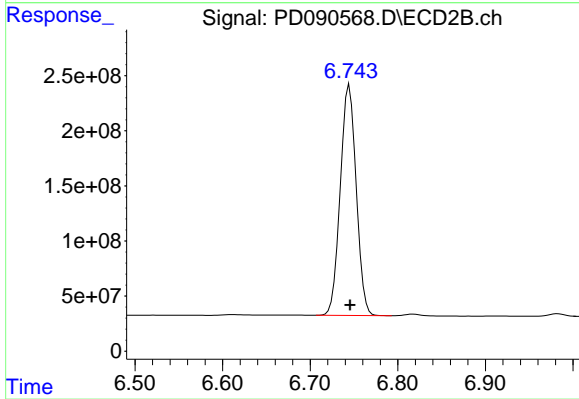
#18 Endrin aldehyde

R.T.: 6.248 min
 Delta R.T.: -0.003 min
 Response: 14211669
 Conc: 0.66 ng/ml



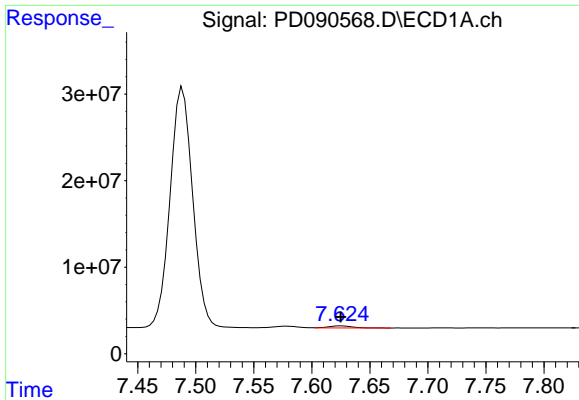
#20 Methoxychlor

R.T.: 7.489 min
 Delta R.T.: 0.000 min
 Response: 375438588
 Conc: 202.79 ng/ml



#20 Methoxychlor

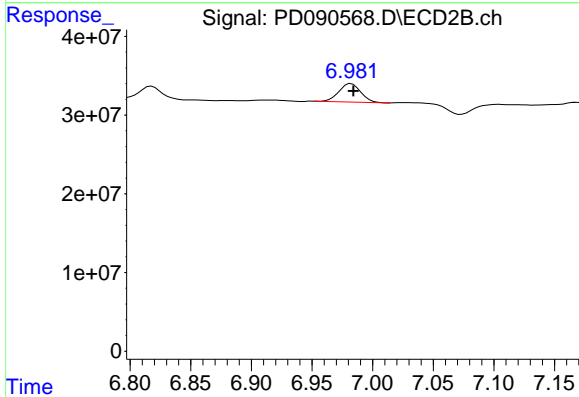
R.T.: 6.745 min
 Delta R.T.: 0.000 min
 Response: 2646859839
 Conc: 221.67 ng/ml



#21 Endrin ketone

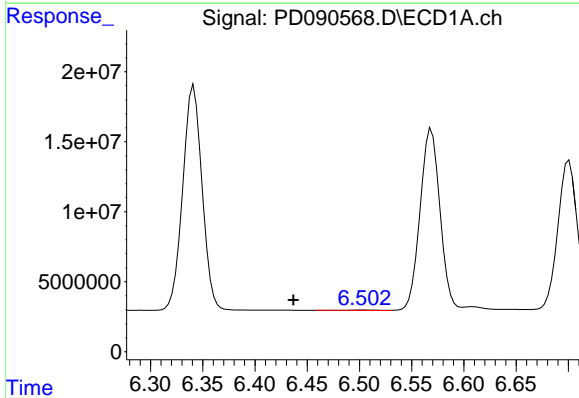
R.T.: 7.625 min
 Delta R.T.: 0.000 min
 Response: 3000290
 Conc: 0.73 ng/ml

Instrument : ECD_D
 ClientSampleId : INDA3158



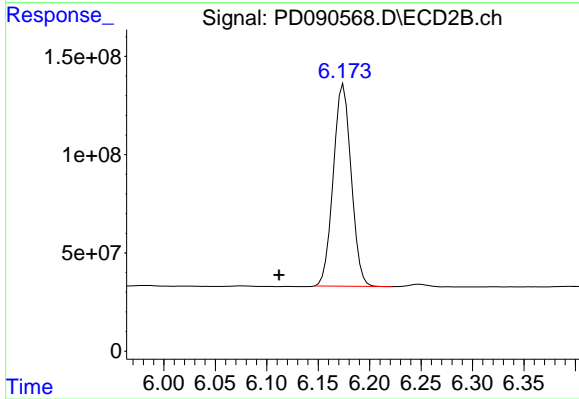
#21 Endrin ketone

R.T.: 6.982 min
 Delta R.T.: -0.002 min
 Response: 29194271
 Conc: 1.03 ng/ml



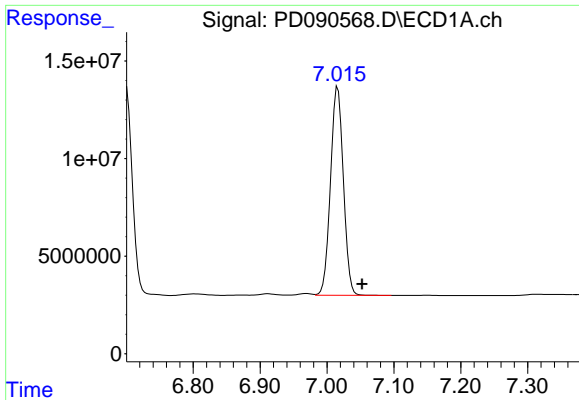
#23 Toxaphene-2

R.T.: 6.504 min
 Delta R.T.: 0.067 min
 Response: 603729
 Conc: 13.82 ng/ml



#23 Toxaphene-2

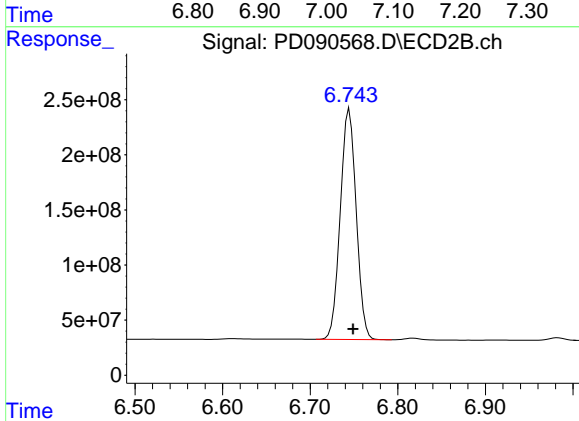
R.T.: 6.175 min
 Delta R.T.: 0.063 min
 Response: 1245559651
 Conc: 6433.65 ng/ml



#24 Toxaphene-3

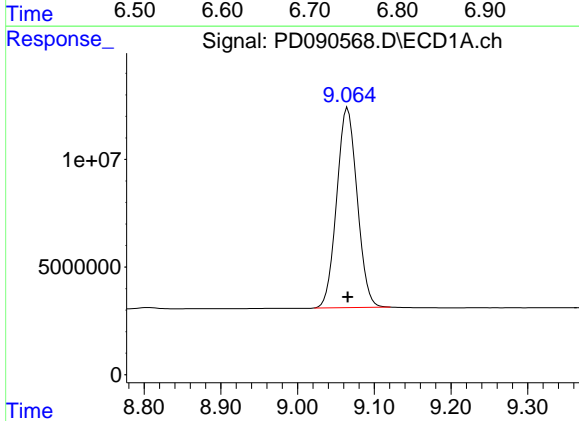
R.T.: 7.016 min
 Delta R.T.: -0.037 min
 Response: 142381215
 Conc: 1230.29 ng/ml

Instrument :
 ECD_D
 ClientSampleId :
 INDA3158



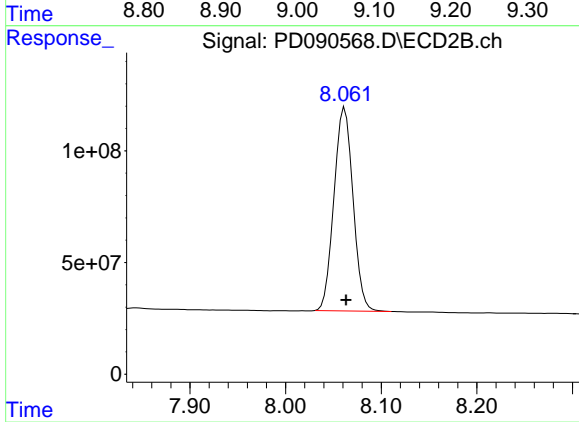
#24 Toxaphene-3

R.T.: 6.745 min
 Delta R.T.: -0.004 min
 Response: 2646859839
 Conc: 4396.25 ng/ml



#27 Decachlorobiphenyl

R.T.: 9.065 min
 Delta R.T.: 0.000 min
 Response: 172414459
 Conc: 43.35 ng/ml



#27 Decachlorobiphenyl

R.T.: 8.062 min
 Delta R.T.: -0.001 min
 Response: 1260358780
 Conc: 50.86 ng/ml