

Data Path : Z:\pestpcbsrv\HPCHEM1\ECD_D\Data\PD101421\
 Data File : PD066233.D
 Signal(s) : Signal #1: ECD1A.ch Signal #2: ECD2B.ch
 Acq On : 13 Oct 2021 16:53
 Operator : AR\AJ
 Sample : M4029-03
 Misc :
 ALS Vial : 24 Sample Multiplier: 1

Instrument :
 ECD_D
 ClientSampleId :

Integration File signal 1: autoint1.e
 Integration File signal 2: autoint2.e
 Quant Time: Oct 14 02:28:57 2021
 Quant Method : Z:\pestpcbsrv\HPCHEM1\ECD_D\Method\PD101321CLP.M
 Quant Title : GC Extractables
 QLast Update : Wed Oct 13 06:25:14 2021
 Response via : Initial Calibration
 Integrator: ChemStation

Volume Inj. : 1 µl
 Signal #1 Phase : ZB-MR2 Signal #2 Phase: ZB-MR1
 Signal #1 Info : 30M x 0.32mm x0.2 Signal #2 Info : 30M x 0.32mm x 0.50µm

	Compound	RT#1	RT#2	Resp#1	Resp#2	ng/ml	ng/ml

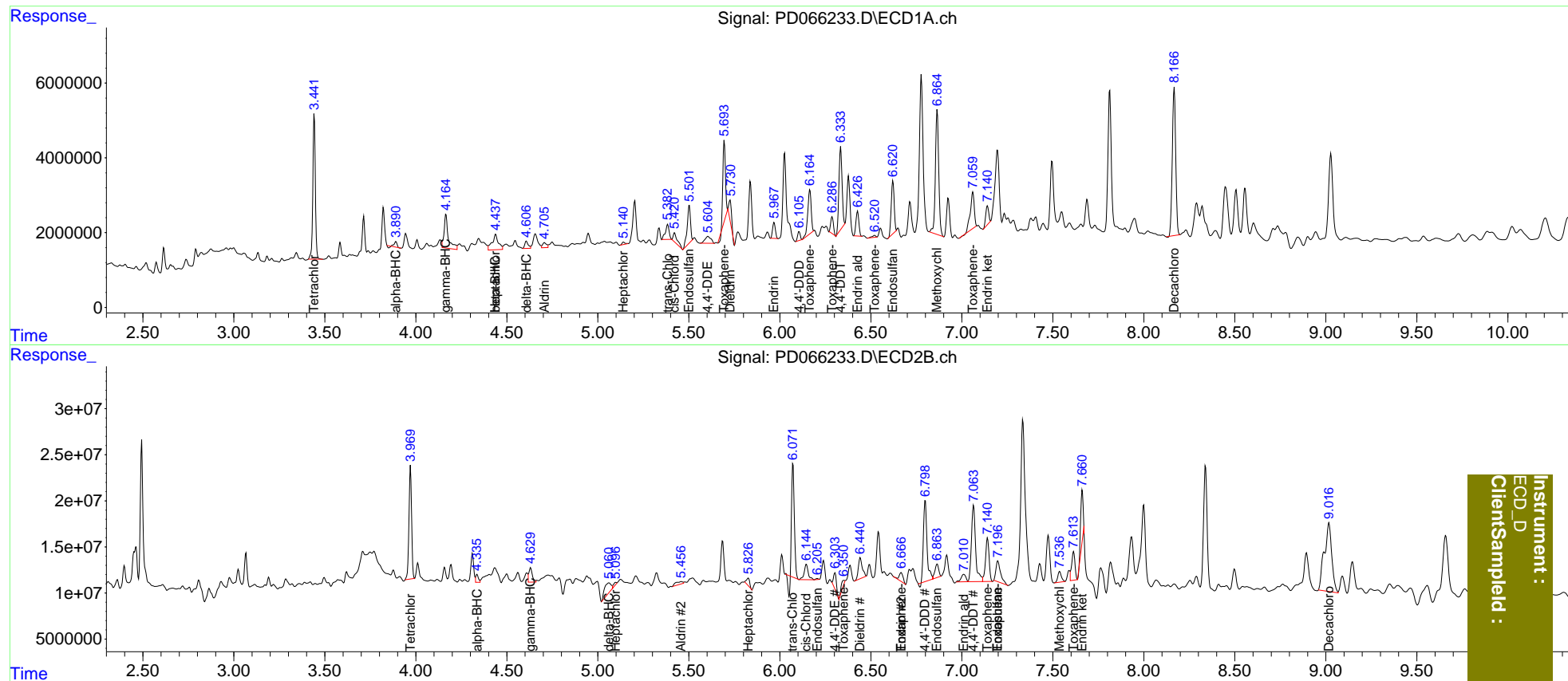
System Monitoring Compounds							
1)	SA Tetrachlo...	3.442	3.971	37213147	123.1E6	19.543	18.220
27)	SA Decachlor...	8.167	9.017	51383744	212.9E6	25.402	43.887 #
Target Compounds							
2)	A alpha-BHC	3.891	4.336f	1405516	8804590	0.474	0.828 #
3)	MA gamma-BHC...	4.166	4.631	14718715	21108926	4.846	2.172 #
4)	MA Heptachlor	4.439	5.098f	9746864	3287863	3.936	0.364 #
5)	MB Aldrin	4.707	5.458	2078829	8139373	0.724	0.853
6)	B beta-BHC	4.439f	4.847	9746864	-4235349	6.227	N.D. #
7)	B delta-BHC	4.607	5.061	2555940	28197767	0.969	2.701 #
8)	Heptachlo...	5.141	5.827	703320	10149529	0.275	1.418 #
9)	A Endosulfan I	5.503	6.206	12633408	998291	5.449	0.111 #
10)	B trans-Chl...	5.384	6.072	5692704	117.0E6	2.174	11.932 #
11)	B cis-Chlor...	5.422	6.146	4038932	25950833	1.559	2.698 #
12)	B 4,4'-DDE	5.605	6.303	4178555	19943592	1.756	2.119
13)	MA Dieldrin	5.727	6.442	5880806	33976121	2.288	3.577 #
14)	MA Endrin	5.969	6.667	4539150	14989396	2.319	1.886
15)	B Endosulfa...	6.234	6.865	-935842	21040980	N.D.	2.549
16)	A 4,4'-DDD	6.106	6.799	2401801	118.9E6	1.202	15.776 #
17)	MA 4,4'-DDT	6.334	7.065	26143741	132.5E6	14.714	17.451
18)	B Endrin al...	6.427	7.011	7371641	14679350	4.635	2.518 #
19)	B Endosulfa...	6.622	7.198	15705643	40229956	7.745	5.299 #
20)	A Methoxychlor	6.865	7.538	42650366	15864898	41.301	4.683 #
21)	B Endrin ke...	7.141	7.662f	5535870	53507105	2.169	6.710 #
22)	Toxaphene-1	5.695	6.352	19909520	7450118	1236.369	155.353 #
23)	Toxaphene-2	6.165	6.667	15180525	14989396	933.802	309.557 #
24)	Toxaphene-3	6.287	7.141	4803632	63960494	121.741	512.916 #
25)	Toxaphene-4	6.521	7.198	660649	40229956	16.658	326.398 #
26)	Toxaphene-5	7.061	7.614	15056170	39860892	352.326	443.174 #

(f)=RT Delta > 1/2 Window (#)=Amounts differ by > 25% (m)=manual int.

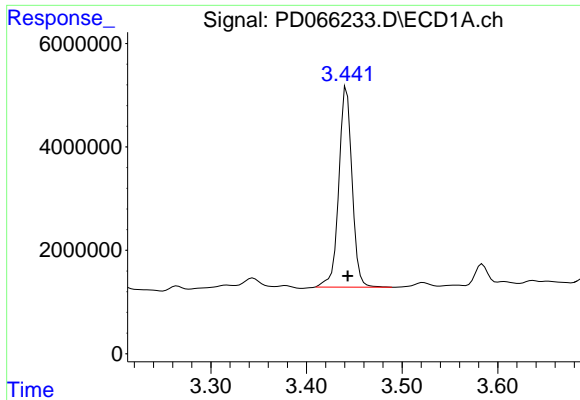
Data Path : Z:\pestpcbsrv\HPCHEM1\ECD_D\Data\PD101421\
 Data File : PD066233.D
 Signal(s) : Signal #1: ECD1A.ch Signal #2: ECD2B.ch
 Acq On : 13 Oct 2021 16:53
 Operator : AR\AJ
 Sample : M4029-03
 Misc :
 ALS Vial : 24 Sample Multiplier: 1

Integration File signal 1: autoint1.e
 Integration File signal 2: autoint2.e
 Quant Time: Oct 14 02:28:57 2021
 Quant Method : Z:\pestpcbsrv\HPCHEM1\ECD_D\Method\PD101321CLP.M
 Quant Title : GC Extractables
 QLast Update : Wed Oct 13 06:25:14 2021
 Response via : Initial Calibration
 Integrator: ChemStation

Volume Inj. : 1 µl
 Signal #1 Phase : ZB-MR2 Signal #2 Phase: ZB-MR1
 Signal #1 Info : 30M x 0.32mm x0.2 Signal #2 Info : 30M x 0.32mm x 0.50µm

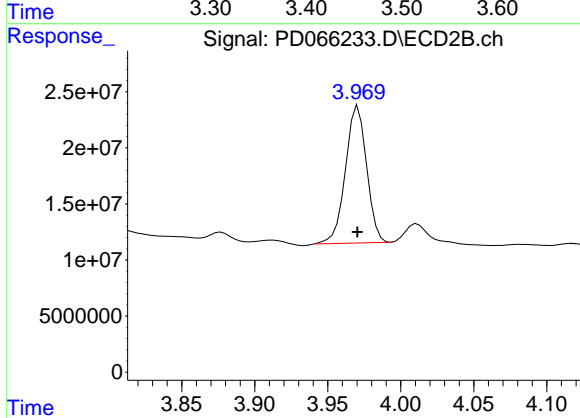


Instrument :
 ECD_D
 ClientSampleId :

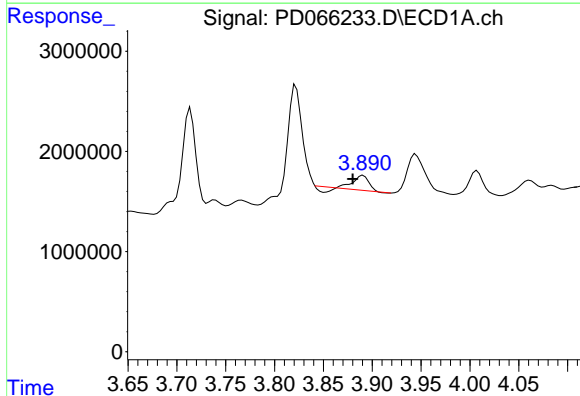


#1 Tetrachloro-m-xylene
 R.T.: 3.442 min
 Delta R.T.: -0.001 min
 Response: 37213147
 Conc: 19.54 ng/ml

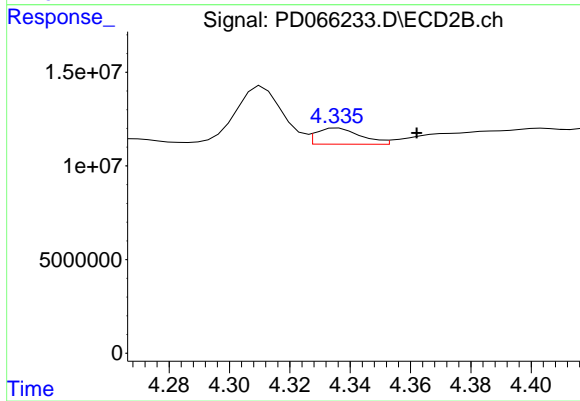
Instrument :
 ECD_D
 ClientSampleId :



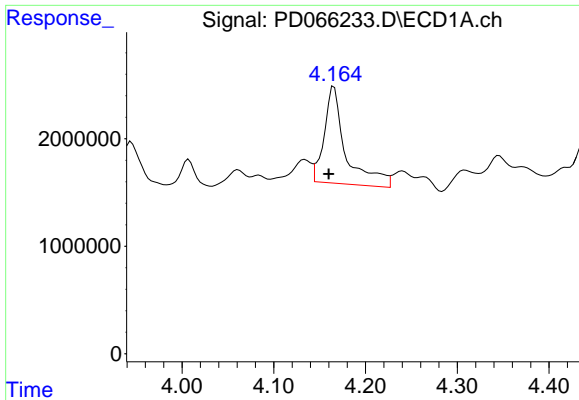
#1 Tetrachloro-m-xylene
 R.T.: 3.971 min
 Delta R.T.: 0.000 min
 Response: 123052174
 Conc: 18.22 ng/ml



#2 alpha-BHC
 R.T.: 3.891 min
 Delta R.T.: 0.011 min
 Response: 1405516
 Conc: 0.47 ng/ml

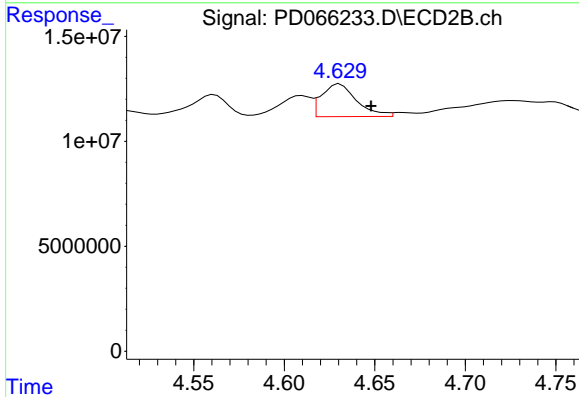


#2 alpha-BHC
 R.T.: 4.336 min
 Delta R.T.: -0.026 min
 Response: 8804590
 Conc: 0.83 ng/ml

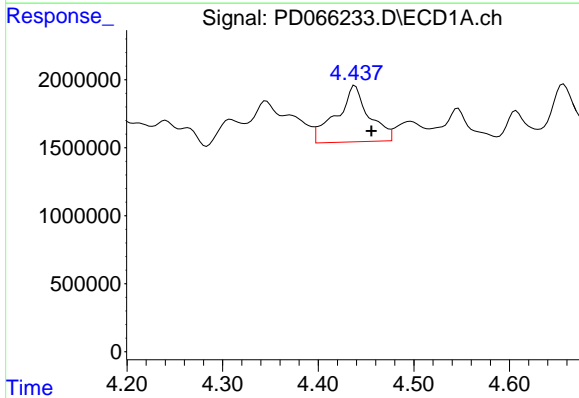


#3 gamma-BHC (Lindane)
 R.T.: 4.166 min
 Delta R.T.: 0.006 min
 Response: 14718715
 Conc: 4.85 ng/ml

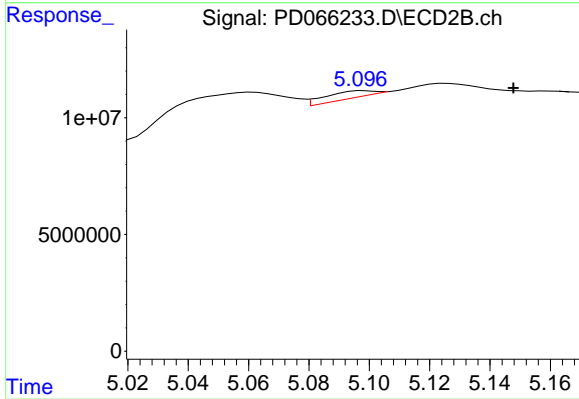
Instrument :
 ECD_D
 ClientSampleId :



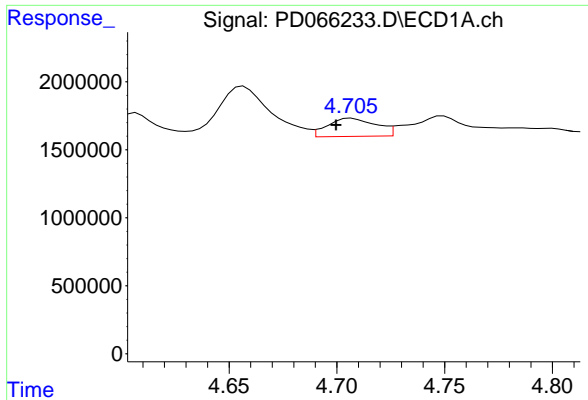
#3 gamma-BHC (Lindane)
 R.T.: 4.631 min
 Delta R.T.: -0.017 min
 Response: 21108926
 Conc: 2.17 ng/ml



#4 Heptachlor
 R.T.: 4.439 min
 Delta R.T.: -0.017 min
 Response: 9746864
 Conc: 3.94 ng/ml

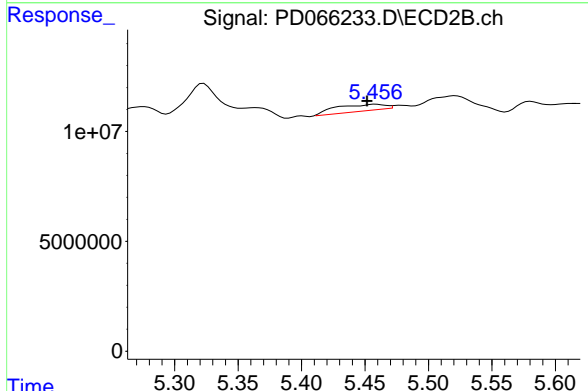


#4 Heptachlor
 R.T.: 5.098 min
 Delta R.T.: -0.050 min
 Response: 3287863
 Conc: 0.36 ng/ml

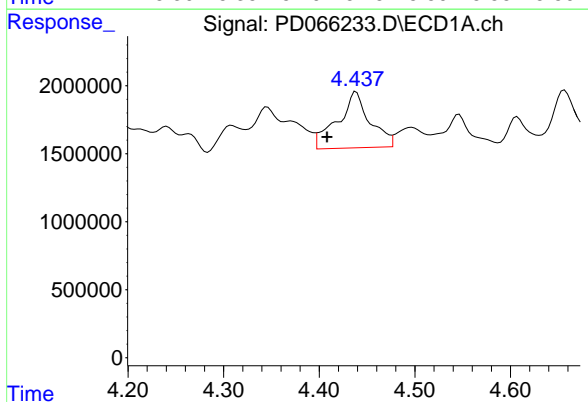


#5 Aldrin
 R.T.: 4.707 min
 Delta R.T.: 0.007 min
 Response: 2078829
 Conc: 0.72 ng/ml

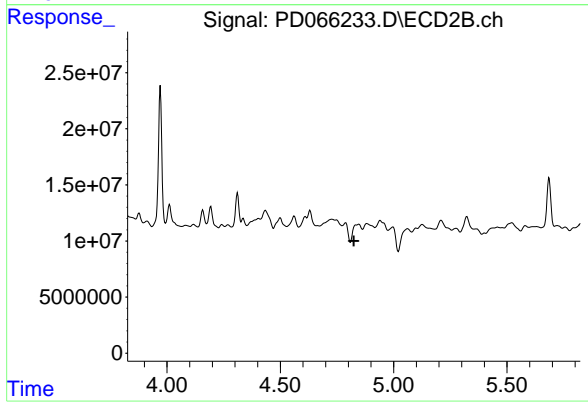
Instrument :
 ECD_D
 ClientSampleId :



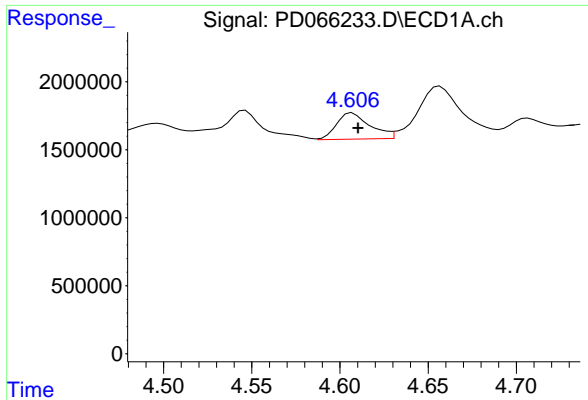
#5 Aldrin
 R.T.: 5.458 min
 Delta R.T.: 0.007 min
 Response: 8139373
 Conc: 0.85 ng/ml



#6 beta-BHC
 R.T.: 4.439 min
 Delta R.T.: 0.031 min
 Response: 9746864
 Conc: 6.23 ng/ml

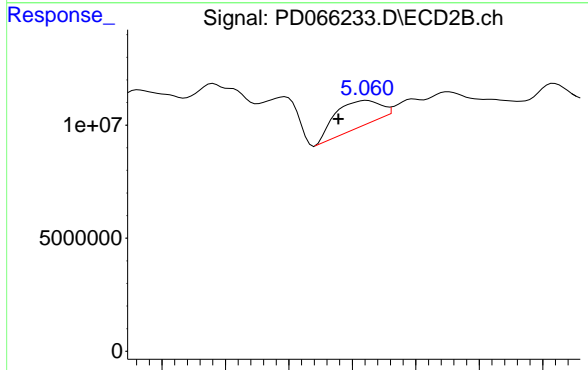


#6 beta-BHC
 R.T.: 4.847 min
 Delta R.T.: 0.022 min
 Response: -4235349
 Conc: N.D.

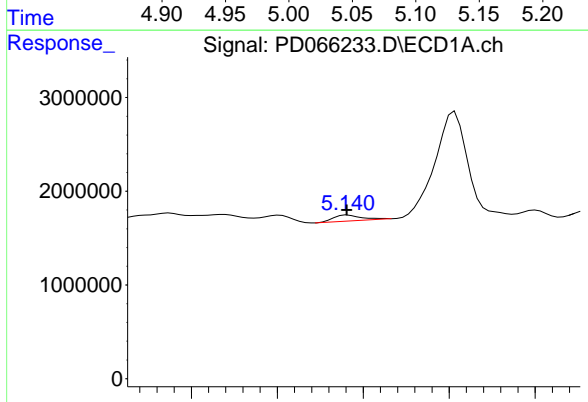


#7 delta-BHC
 R.T.: 4.607 min
 Delta R.T.: -0.003 min
 Response: 2555940
 Conc: 0.97 ng/ml

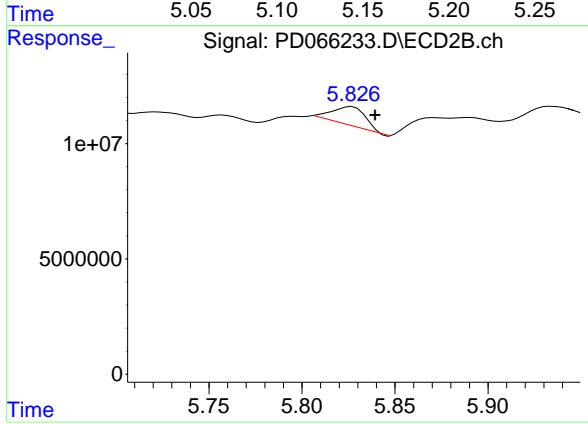
Instrument :
 ECD_D
 ClientSampled :



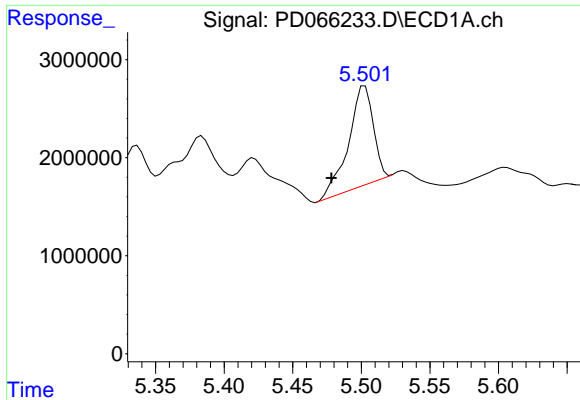
#7 delta-BHC
 R.T.: 5.061 min
 Delta R.T.: 0.022 min
 Response: 2819776
 Conc: 2.70 ng/ml



#8 Heptachlor epoxide
 R.T.: 5.141 min
 Delta R.T.: 0.000 min
 Response: 703320
 Conc: 0.28 ng/ml

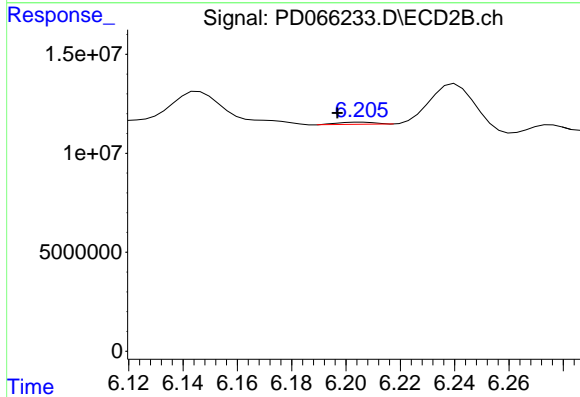


#8 Heptachlor epoxide
 R.T.: 5.827 min
 Delta R.T.: -0.012 min
 Response: 1014952
 Conc: 1.42 ng/ml

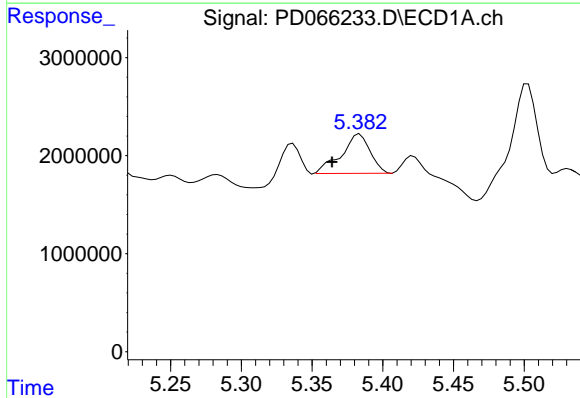


#9 Endosulfan I
 R.T.: 5.503 min
 Delta R.T.: 0.024 min
 Response: 12633408
 Conc: 5.45 ng/ml

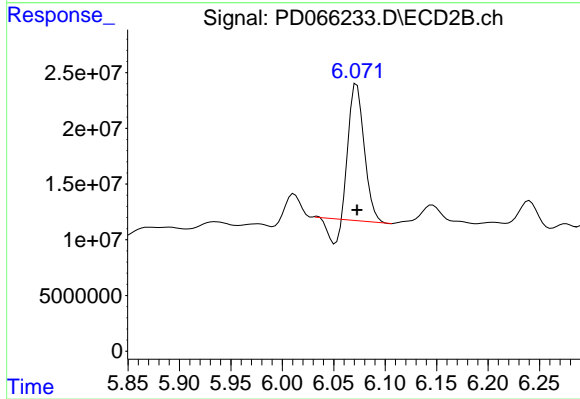
Instrument :
 ECD_D
 ClientSampleId :



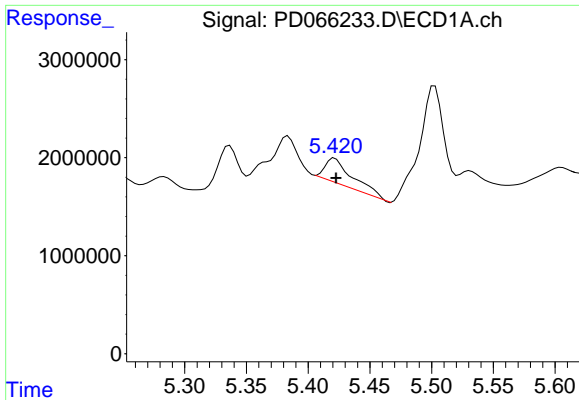
#9 Endosulfan I
 R.T.: 6.206 min
 Delta R.T.: 0.009 min
 Response: 998291
 Conc: 0.11 ng/ml



#10 trans-Chlordane
 R.T.: 5.384 min
 Delta R.T.: 0.020 min
 Response: 5692704
 Conc: 2.17 ng/ml

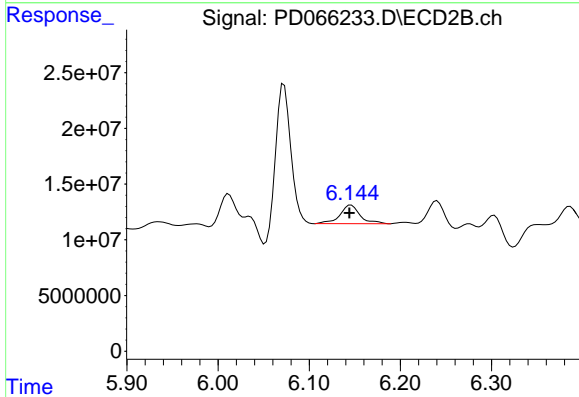


#10 trans-Chlordane
 R.T.: 6.072 min
 Delta R.T.: 0.000 min
 Response: 116992148
 Conc: 11.93 ng/ml

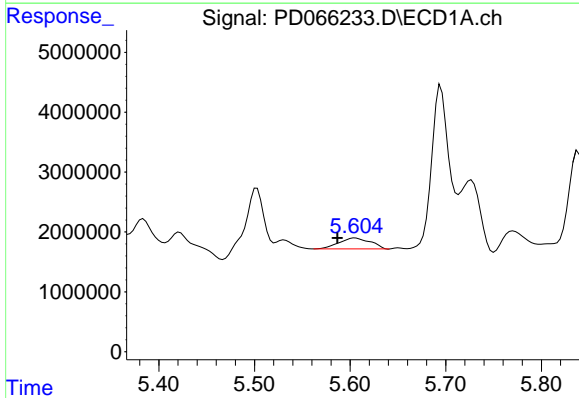


#11 cis-Chlordane
 R.T.: 5.422 min
 Delta R.T.: -0.001 min
 Response: 4038932
 Conc: 1.56 ng/ml

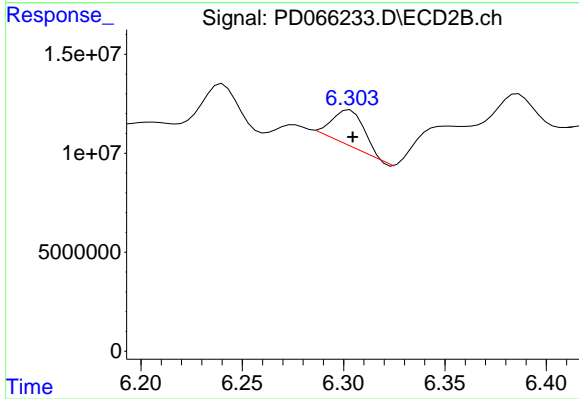
Instrument :
 ECD_D
 ClientSampleId :



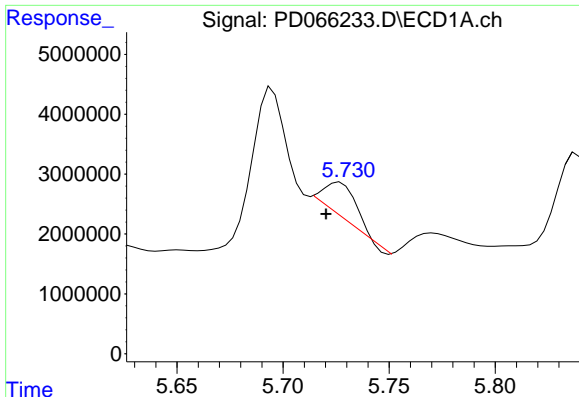
#11 cis-Chlordane
 R.T.: 6.146 min
 Delta R.T.: 0.002 min
 Response: 25950833
 Conc: 2.70 ng/ml



#12 4,4'-DDE
 R.T.: 5.605 min
 Delta R.T.: 0.019 min
 Response: 4178555
 Conc: 1.76 ng/ml



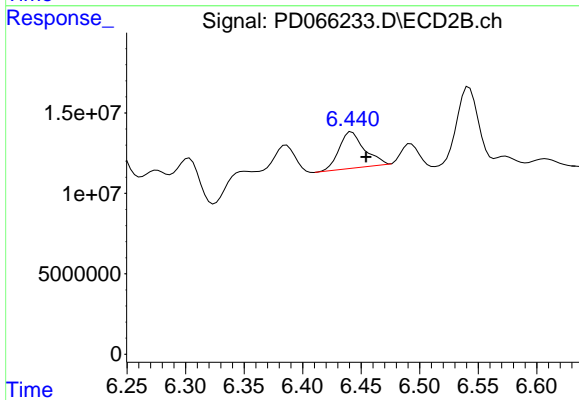
#12 4,4'-DDE
 R.T.: 6.303 min
 Delta R.T.: -0.001 min
 Response: 19943592
 Conc: 2.12 ng/ml



#13 Dieldrin

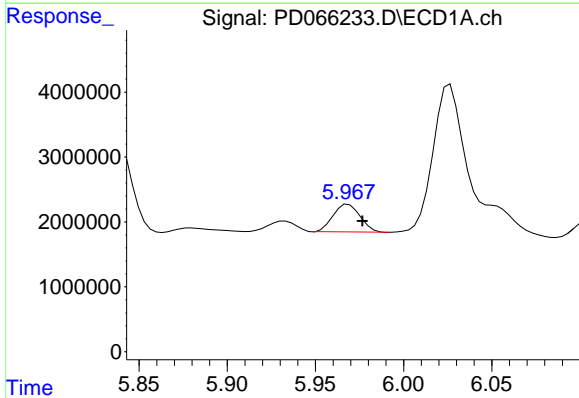
R.T.: 5.727 min
 Delta R.T.: 0.006 min
 Response: 5880806
 Conc: 2.29 ng/ml

Instrument :
 ECD_D
 ClientSampled :



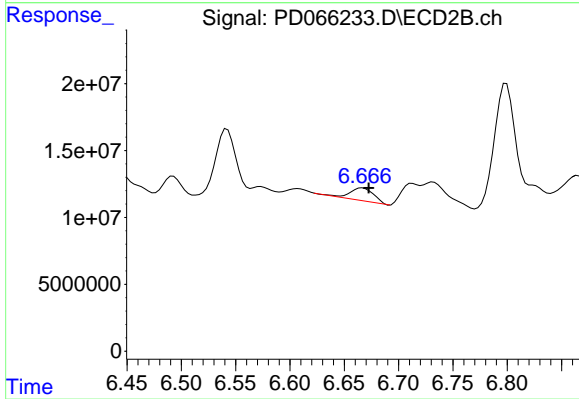
#13 Dieldrin

R.T.: 6.442 min
 Delta R.T.: -0.012 min
 Response: 33976121
 Conc: 3.58 ng/ml



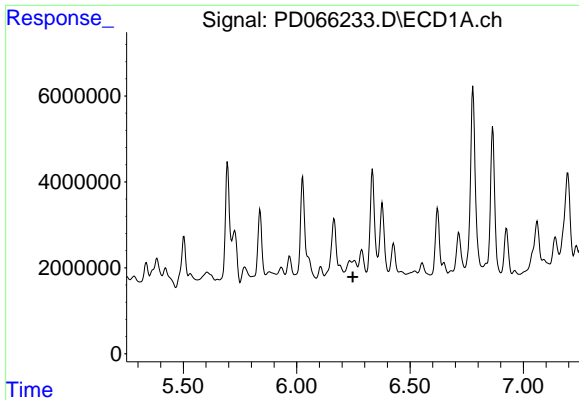
#14 Endrin

R.T.: 5.969 min
 Delta R.T.: -0.008 min
 Response: 4539150
 Conc: 2.32 ng/ml



#14 Endrin

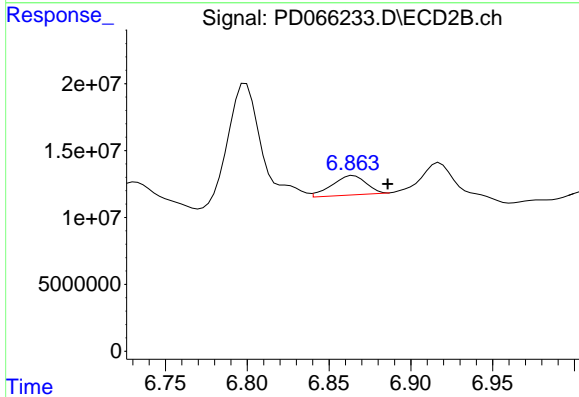
R.T.: 6.667 min
 Delta R.T.: -0.006 min
 Response: 14989396
 Conc: 1.89 ng/ml



#15 Endosulfan II

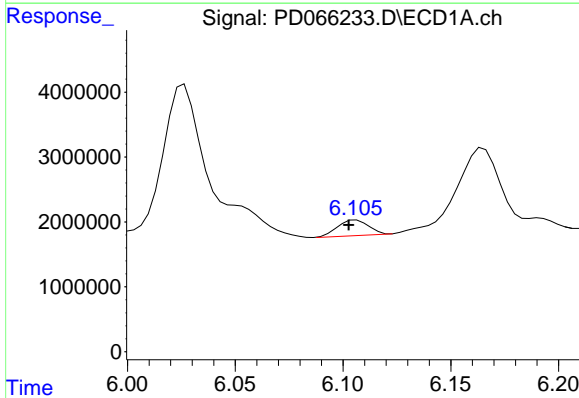
R.T.: 6.234 min
 Delta R.T.: -0.013 min
 Response: -935842
 Conc: N.D.

Instrument :
 ECD_D
 ClientSampled :



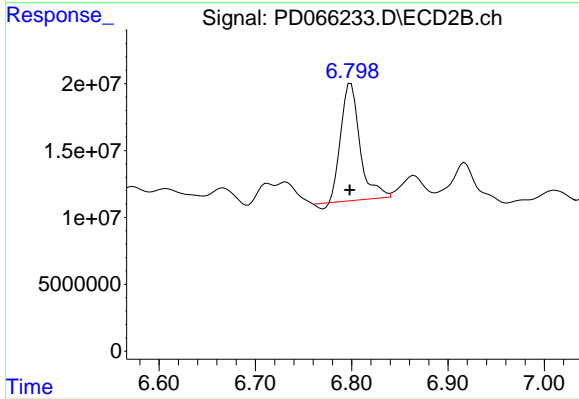
#15 Endosulfan II

R.T.: 6.865 min
 Delta R.T.: -0.021 min
 Response: 21040980
 Conc: 2.55 ng/ml



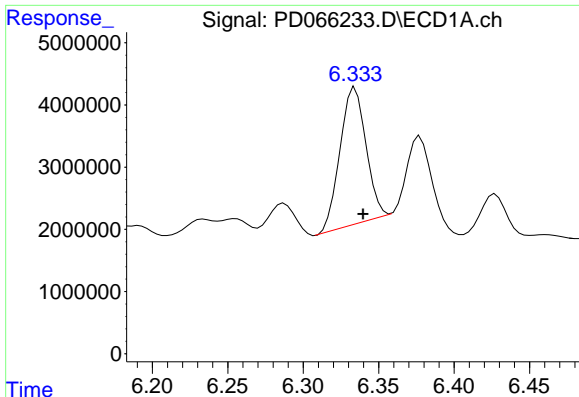
#16 4,4'-DDD

R.T.: 6.106 min
 Delta R.T.: 0.003 min
 Response: 2401801
 Conc: 1.20 ng/ml



#16 4,4'-DDD

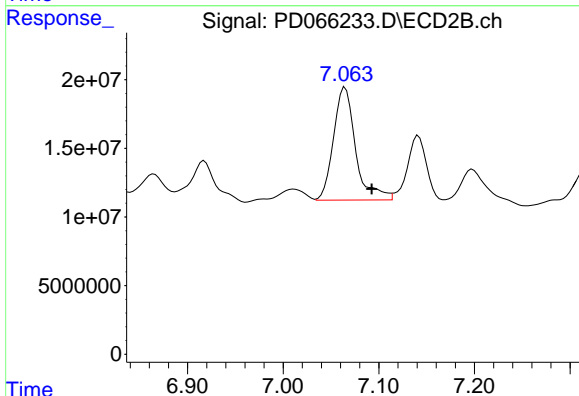
R.T.: 6.799 min
 Delta R.T.: 0.001 min
 Response: 118879320
 Conc: 15.78 ng/ml



#17 4,4'-DDT

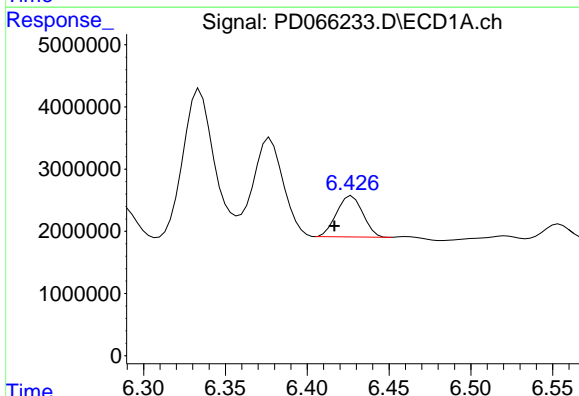
R.T.: 6.334 min
 Delta R.T.: -0.005 min
 Response: 26143741
 Conc: 14.71 ng/ml

Instrument :
 ECD_D
 ClientSampleId :



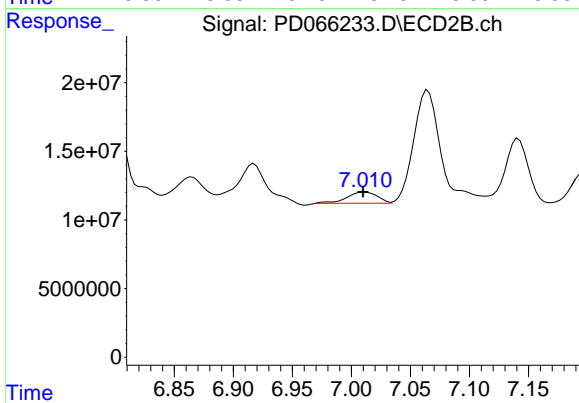
#17 4,4'-DDT

R.T.: 7.065 min
 Delta R.T.: -0.028 min
 Response: 132480397
 Conc: 17.45 ng/ml



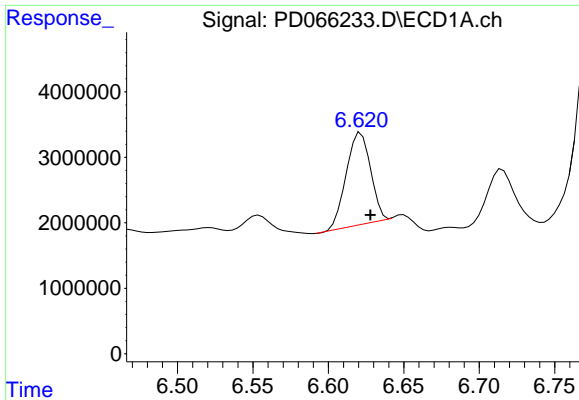
#18 Endrin aldehyde

R.T.: 6.427 min
 Delta R.T.: 0.011 min
 Response: 7371641
 Conc: 4.63 ng/ml



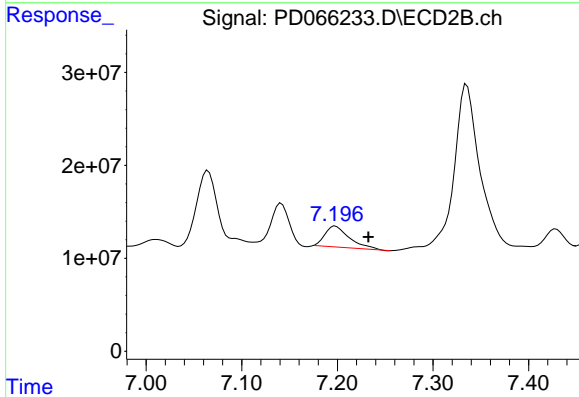
#18 Endrin aldehyde

R.T.: 7.011 min
 Delta R.T.: 0.001 min
 Response: 14679350
 Conc: 2.52 ng/ml

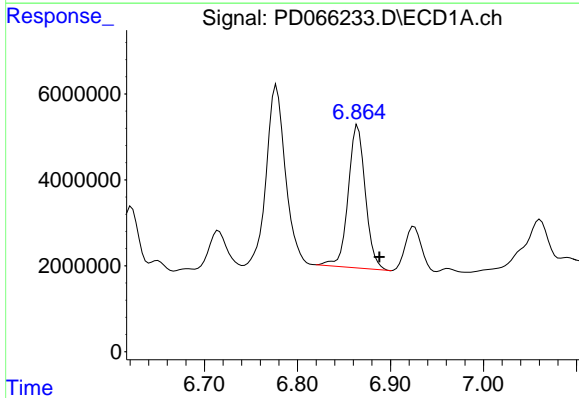


#19 Endosulfan Sulfate
 R.T.: 6.622 min
 Delta R.T.: -0.006 min
 Response: 15705643
 Conc: 7.74 ng/ml

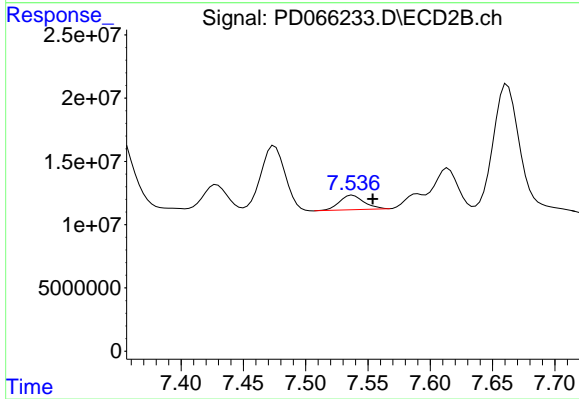
Instrument :
 ECD_D
 ClientSampled :



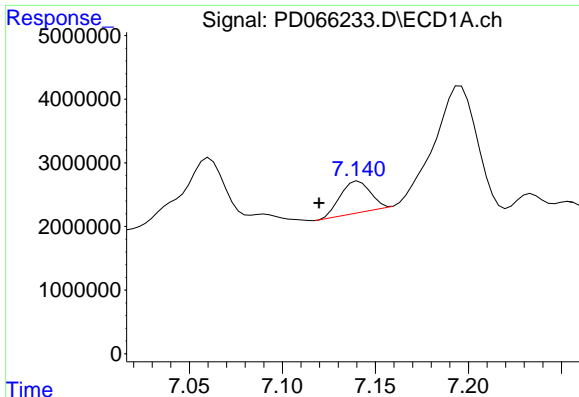
#19 Endosulfan Sulfate
 R.T.: 7.198 min
 Delta R.T.: -0.035 min
 Response: 40229956
 Conc: 5.30 ng/ml



#20 Methoxychlor
 R.T.: 6.865 min
 Delta R.T.: -0.023 min
 Response: 42650366
 Conc: 41.30 ng/ml

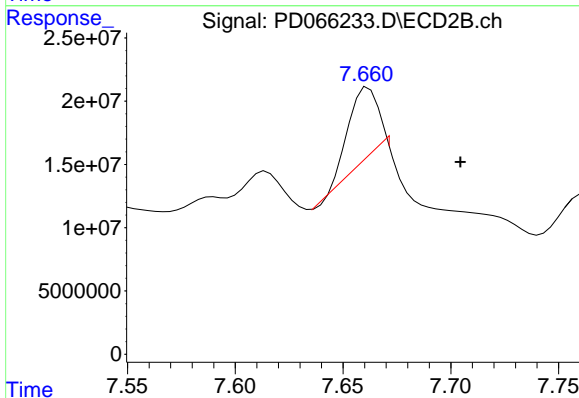


#20 Methoxychlor
 R.T.: 7.538 min
 Delta R.T.: -0.016 min
 Response: 15864898
 Conc: 4.68 ng/ml

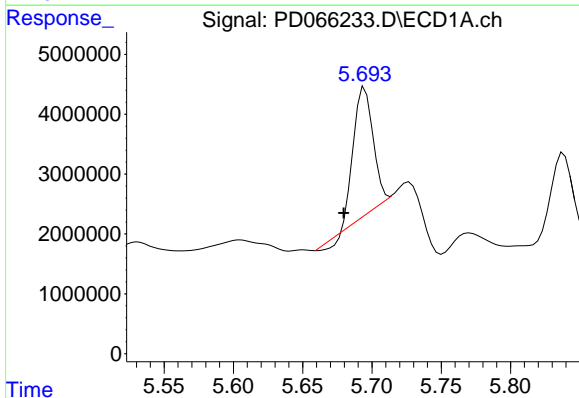


#21 Endrin ketone
 R.T.: 7.141 min
 Delta R.T.: 0.021 min
 Response: 5535870
 Conc: 2.17 ng/ml

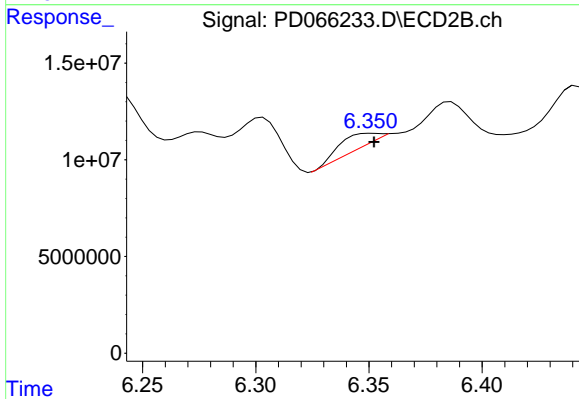
Instrument :
 ECD_D
 ClientSampleId :



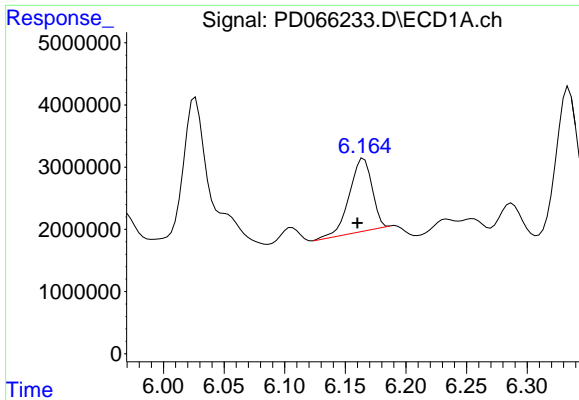
#21 Endrin ketone
 R.T.: 7.662 min
 Delta R.T.: -0.043 min
 Response: 53507105
 Conc: 6.71 ng/ml



#22 Toxaphene-1
 R.T.: 5.695 min
 Delta R.T.: 0.015 min
 Response: 19909520
 Conc: 1236.37 ng/ml

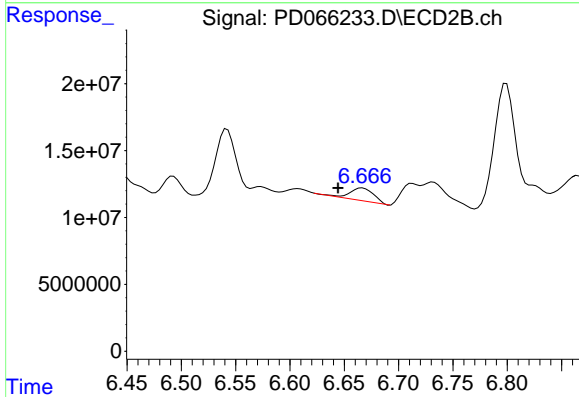


#22 Toxaphene-1
 R.T.: 6.352 min
 Delta R.T.: 0.000 min
 Response: 7450118
 Conc: 155.35 ng/ml

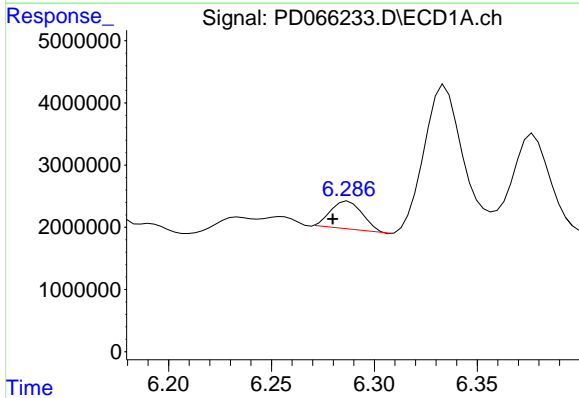


#23 Toxaphene-2
 R.T.: 6.165 min
 Delta R.T.: 0.005 min
 Response: 15180525
 Conc: 933.80 ng/ml

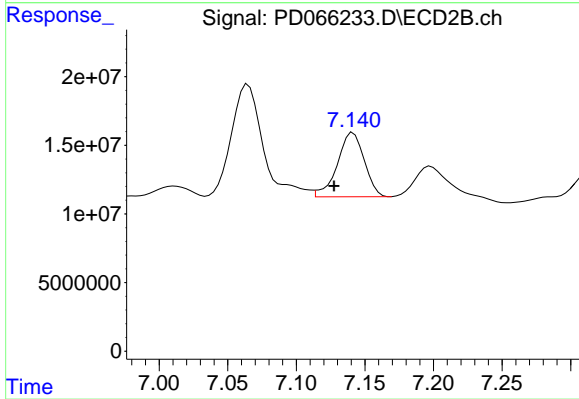
Instrument :
 ECD_D
 ClientSampleId :



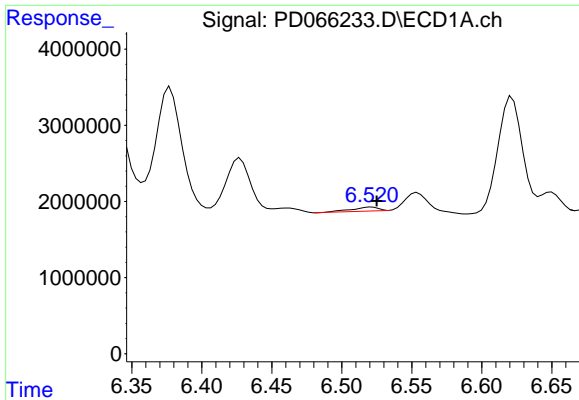
#23 Toxaphene-2
 R.T.: 6.667 min
 Delta R.T.: 0.022 min
 Response: 14989396
 Conc: 309.56 ng/ml



#24 Toxaphene-3
 R.T.: 6.287 min
 Delta R.T.: 0.008 min
 Response: 4803632
 Conc: 121.74 ng/ml

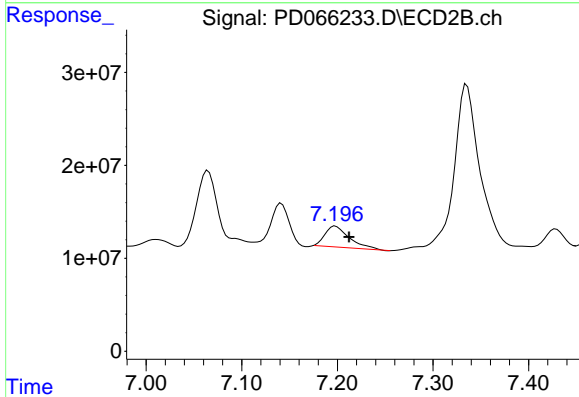


#24 Toxaphene-3
 R.T.: 7.141 min
 Delta R.T.: 0.014 min
 Response: 63960494
 Conc: 512.92 ng/ml

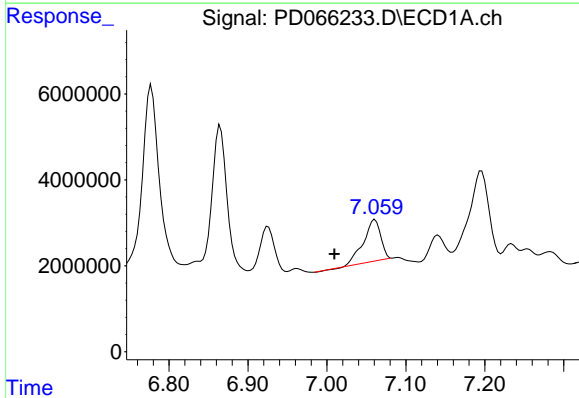


#25 Toxaphene-4
 R.T.: 6.521 min
 Delta R.T.: -0.004 min
 Response: 660649
 Conc: 16.66 ng/ml

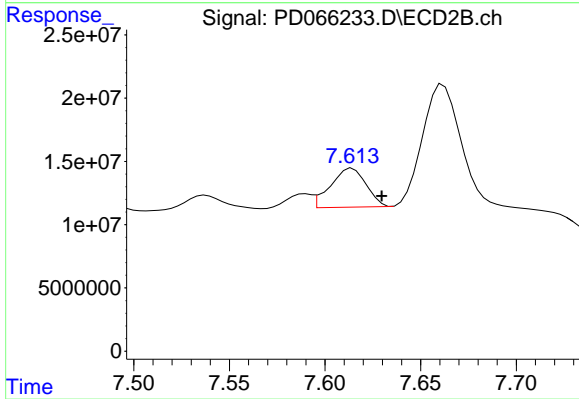
Instrument :
 ECD_D
 ClientSampled :



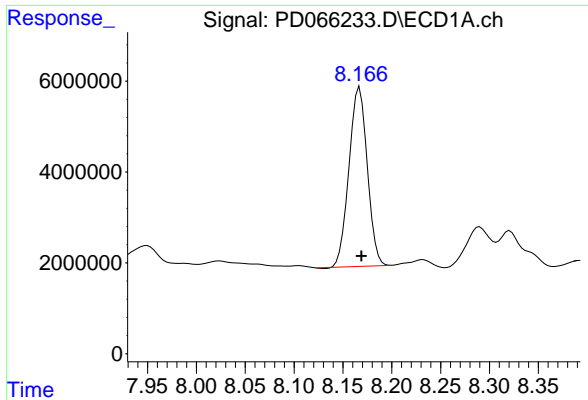
#25 Toxaphene-4
 R.T.: 7.198 min
 Delta R.T.: -0.014 min
 Response: 40229956
 Conc: 326.40 ng/ml



#26 Toxaphene-5
 R.T.: 7.061 min
 Delta R.T.: 0.051 min
 Response: 15056170
 Conc: 352.33 ng/ml



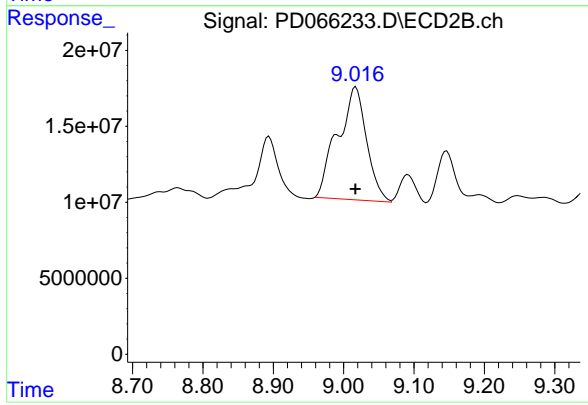
#26 Toxaphene-5
 R.T.: 7.614 min
 Delta R.T.: -0.015 min
 Response: 39860892
 Conc: 443.17 ng/ml



#27 Decachlorobiphenyl

R.T.: 8.167 min
Delta R.T.: -0.002 min
Response: 51383744
Conc: 25.40 ng/ml

Instrument :
ECD_D
ClientSampleId :



#27 Decachlorobiphenyl

R.T.: 9.017 min
Delta R.T.: 0.000 min
Response: 212879194
Conc: 43.89 ng/ml