

Data Path : Z:\pestpcbsrv\HPCHEM1\ECD\_D\Data\PD101422\  
 Data File : PD072423.D  
 Signal(s) : Signal #1: ECD1A.ch Signal #2: ECD2B.ch  
 Acq On : 14 Oct 2022 14:14  
 Operator : AR\AJ  
 Sample : N5060-08  
 Misc :  
 ALS Vial : 12 Sample Multiplier: 1

**Instrument :**  
 ECD\_D  
**ClientSampleId :**  
 C1BG8

**Manual Integrations**  
**APPROVED**

Reviewed By :Abdul Mirza 10/17/2022  
 Supervised By :Ankita Jodhani 10/17/2022

Integration File signal 1: autoint1.e  
 Integration File signal 2: autoint2.e  
 Quant Time: Oct 15 00:22:01 2022  
 Quant Method : Z:\pestpcbsrv\HPCHEM1\ECD\_D\Method\PD101122CLP.M  
 Quant Title : GC Extractables  
 QLast Update : Wed Oct 12 06:06:30 2022  
 Response via : Initial Calibration  
 Integrator: ChemStation

Volume Inj. : 1 µl  
 Signal #1 Phase : ZB-MR2 Signal #2 Phase: ZB-MR1  
 Signal #1 Info : 30M x 0.32mm x0.2 Signal #2 Info : 30M x 0.32mm x 0.50µm

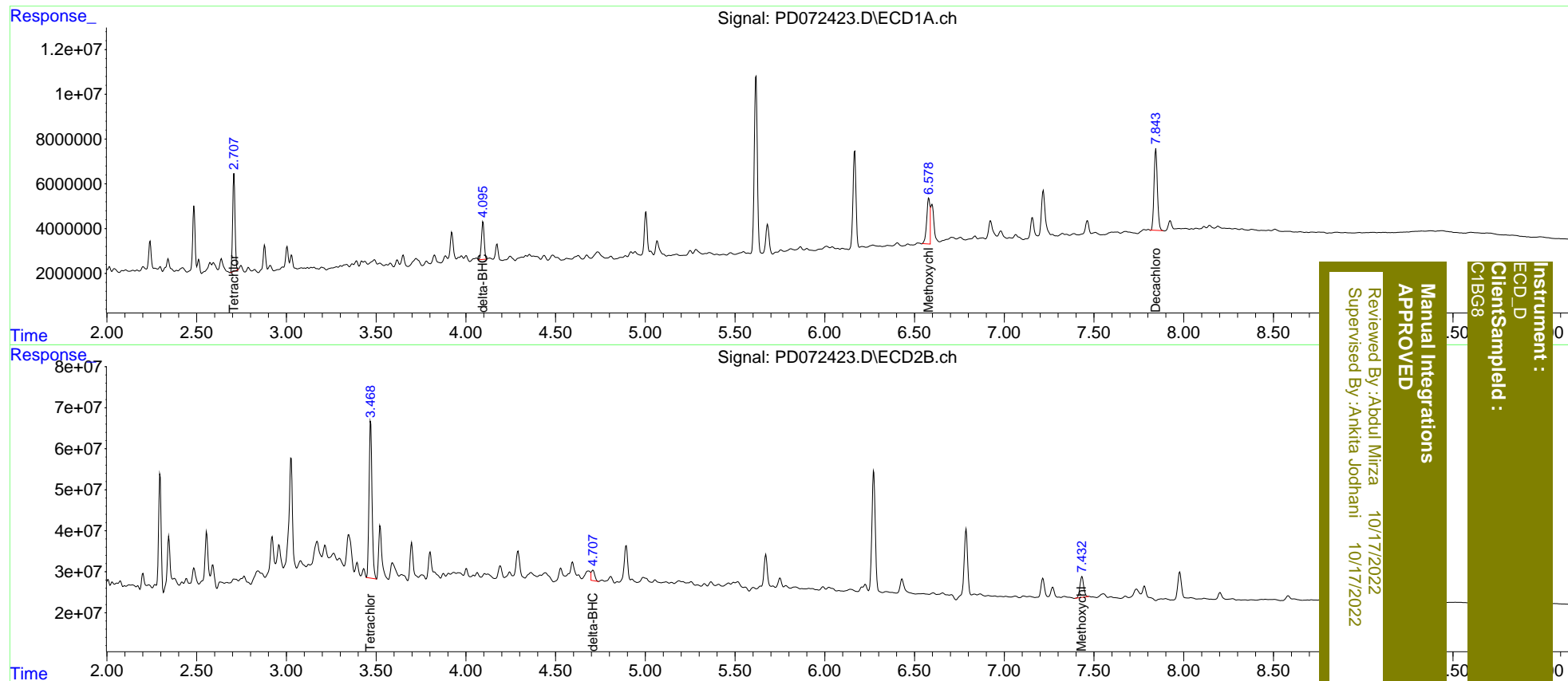
Compound	RT#1	RT#2	Resp#1	Resp#2	ng/ml	ng/ml
System Monitoring Compounds						
1) SA Tetrachlo...	2.707	3.468	39917640	443.0E6	16.353m	18.526m
27) SA Decachlor...	7.845	8.929	47377846	167.8E6	24.254	33.217 #
Target Compounds						
7) B delta-BHC	4.095	4.709	17698370	34555216	5.244m	1.822 #
20) A Methoxychlor	6.578	7.433	27896217	73861105	23.701m	23.011

(f)=RT Delta > 1/2 Window (#)=Amounts differ by > 25% (m)=manual int.

Data Path : Z:\pestpcbsrv\HPCHEM1\ECD\_D\Data\PD101422\  
 Data File : PD072423.D  
 Signal(s) : Signal #1: ECD1A.ch Signal #2: ECD2B.ch  
 Acq On : 14 Oct 2022 14:14  
 Operator : AR\AJ  
 Sample : N5060-08  
 Misc :  
 ALS Vial : 12 Sample Multiplier: 1

Integration File signal 1: autoint1.e  
 Integration File signal 2: autoint2.e  
 Quant Time: Oct 15 00:22:01 2022  
 Quant Method : Z:\pestpcbsrv\HPCHEM1\ECD\_D\Method\PD101122CLP.M  
 Quant Title : GC Extractables  
 QLast Update : Wed Oct 12 06:06:30 2022  
 Response via : Initial Calibration  
 Integrator: ChemStation

Volume Inj. : 1 µl  
 Signal #1 Phase : ZB-MR2 Signal #2 Phase: ZB-MR1  
 Signal #1 Info : 30M x 0.32mm x0.2 Signal #2 Info : 30M x 0.32mm x 0.50µm



Instrument :  
 ECD\_D  
 ClientSampleId :  
 C1BG8

Manual Integrations  
 APPROVED

Reviewed By :Abdul Mirza 10/17/2022  
 Supervised By :Ankita Jodhani 10/17/2022