

Data Path : Z:\pestpcbsrv\HPCHEM1\ECD\_D\Data\PD101424\  
 Data File : PD086029.D  
 Signal(s) : Signal #1: ECD1A.ch Signal #2: ECD2B.ch  
 Acq On : 14 Oct 2024 21:08  
 Operator : AR\AJ  
 Sample : P4349-17  
 Misc :  
 ALS Vial : 33 Sample Multiplier: 1

Instrument :  
 ECD\_D  
 ClientSampleId :  
 EOAG1

Integration File signal 1: autoint1.e  
 Integration File signal 2: autoint2.e  
 Quant Time: Oct 15 01:49:01 2024  
 Quant Method : Z:\pestpcbsrv\HPCHEM1\ECD\_D\Method\PD100924CLP.M  
 Quant Title : GC Extractables  
 QLast Update : Wed Oct 09 17:21:49 2024  
 Response via : Initial Calibration  
 Integrator: ChemStation

Volume Inj. : 1 µl  
 Signal #1 Phase : ZB-MR2 Signal #2 Phase: ZB-MR2  
 Signal #1 Info : 30M x 0.32mm x0.5 Signal #2 Info : 30M x 0.32mm x 0.25µm

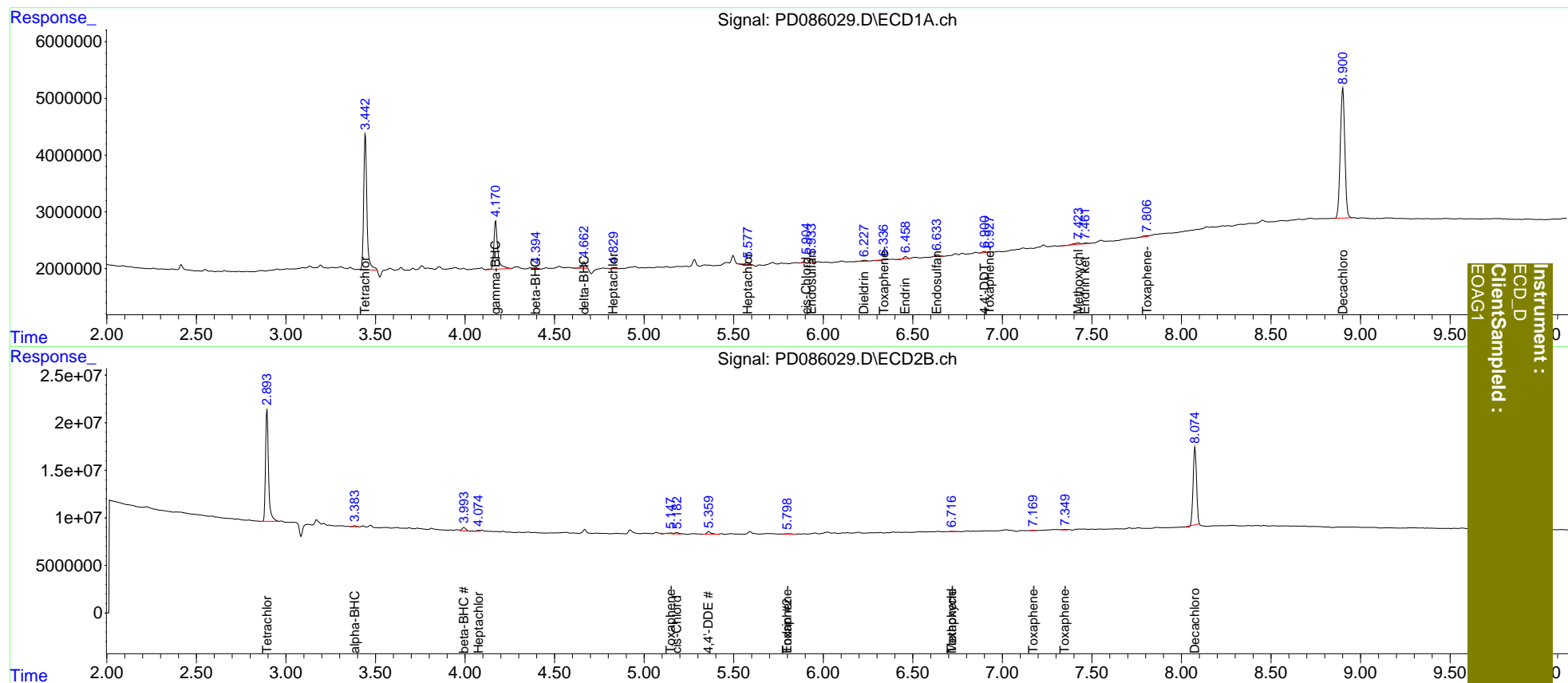
Compound	RT#1	RT#2	Resp#1	Resp#2	ng/ml	ng/ml
System Monitoring Compounds						
1) SA Tetrachlo...	3.444	2.895	29889248	136.1E6	26.130	21.915
27) SA Decachlor...	8.901	8.076	40223934	107.1E6	20.856	22.031
Target Compounds						
2) A alpha-BHC	0.000	3.384	0	1155669	N.D.	0.125
3) MA gamma-BHC...	4.171f	3.735	12510943	333324	6.274	<MDL #
4) MA Heptachlor	4.831f	4.075	307801	1054588	0.160	0.143
5) MB Aldrin	5.125	4.353	133874	494158	<MDL	<MDL #
6) B beta-BHC	4.396	3.995	146965	5369900	0.139	1.191 #
7) B delta-BHC	4.664	4.211f	1470117	637617	0.668	<MDL #
8) B Heptachlo...	5.578	4.847	349511	541845	0.157	<MDL #
9) A Endosulfan I	5.935	5.274f	762790	519907	0.418	<MDL #
10) B trans-Chl...	5.850	5.148f	34889	644126	<MDL	<MDL #
11) B cis-Chlor...	5.905	5.183	1082269	2278880	0.475	0.254 #
12) B 4,4'-DDE	6.103	5.360	-5872	4575893	N.D.	0.609
13) MA Dieldrin	6.229	5.485	374305	-436381	0.190	N.D. #
14) MA Endrin	6.460	5.800	407913	832453	0.264	0.141 #
15) B Endosulfa...	6.635	6.063	520284	96229	0.262	<MDL #
17) MA 4,4'-DDT	6.901	6.176	223920	-169348	0.166	N.D. #
18) B Endrin al...	6.777	6.268	-16929	339424	N.D.	<MDL
19) B Endosulfa...	0.000	6.423f	0	487728	N.D.	<MDL
20) A Methoxychlor	7.424f	6.717	635190	431853	0.794	0.206 #
21) B Endrin ke...	7.463	7.022f	236499	687657	0.116	<MDL #
22) Toxaphene-1	6.103	5.148	-5872	644126	N.D.	16.737
23) Toxaphene-2	6.338	5.800	10850	832453	0.629	23.780 #
24) Toxaphene-3	6.931	6.717	79698	431853	1.788	3.640 #
25) Toxaphene-4	0.000	7.171	0	312664	N.D.	4.140
26) Toxaphene-5	7.808	7.350	321196	662350	12.688	11.995

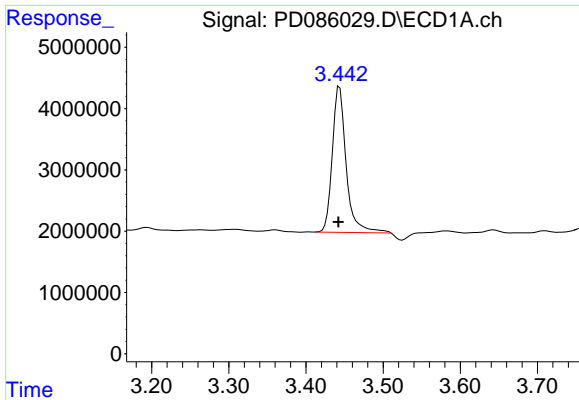
(f)=RT Delta > 1/2 Window (#)=Amounts differ by > 25% (m)=manual int.

Data Path : Z:\pestpcbsrv\HPCHEM1\ECD\_D\Data\PD101424\  
 Data File : PD086029.D  
 Signal(s) : Signal #1: ECD1A.ch Signal #2: ECD2B.ch  
 Acq On : 14 Oct 2024 21:08  
 Operator : AR\AJ  
 Sample : P4349-17  
 Misc :  
 ALS Vial : 33 Sample Multiplier: 1

Integration File signal 1: autoint1.e  
 Integration File signal 2: autoint2.e  
 Quant Time: Oct 15 01:49:01 2024  
 Quant Method : Z:\pestpcbsrv\HPCHEM1\ECD\_D\Method\PD100924CLP.M  
 Quant Title : GC Extractables  
 QLast Update : Wed Oct 09 17:21:49 2024  
 Response via : Initial Calibration  
 Integrator: ChemStation

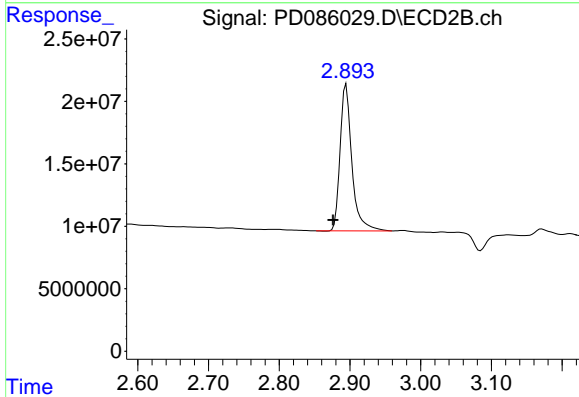
Volume Inj. : 1 µl  
 Signal #1 Phase : ZB-MR1 Signal #2 Phase: ZB-MR2  
 Signal #1 Info : 30M x 0.32mm x0.5 Signal #2 Info : 30M x 0.32mm x 0.25µm



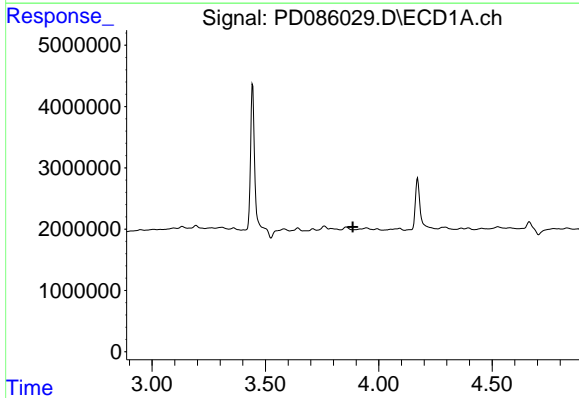


#1 Tetrachloro-m-xylene  
 R.T.: 3.444 min  
 Delta R.T.: 0.002 min  
 Response: 29889248  
 Conc: 26.13 ng/ml

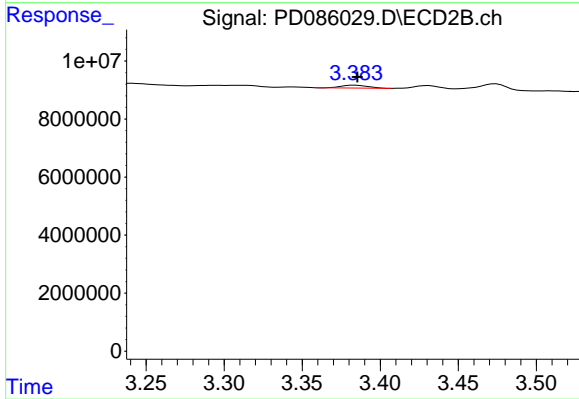
Instrument :  
 ECD\_D  
 ClientSampleId :  
 EOAG1



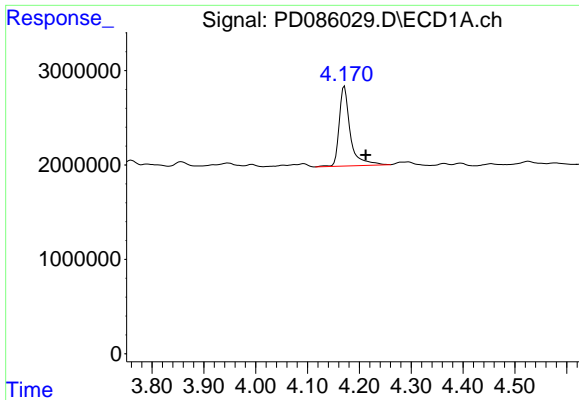
#1 Tetrachloro-m-xylene  
 R.T.: 2.895 min  
 Delta R.T.: 0.019 min  
 Response: 136089931  
 Conc: 21.91 ng/ml



#2 alpha-BHC  
 R.T.: 0.000 min  
 Exp R.T. : 3.885 min  
 Response: 0  
 Conc: N.D.



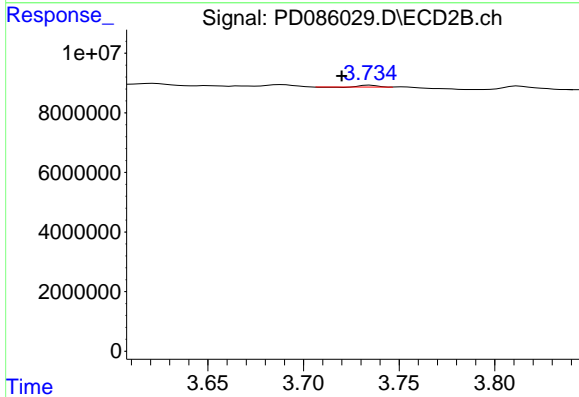
#2 alpha-BHC  
 R.T.: 3.384 min  
 Delta R.T.: -0.001 min  
 Response: 1155669  
 Conc: 0.13 ng/ml



#3 gamma-BHC (Lindane)

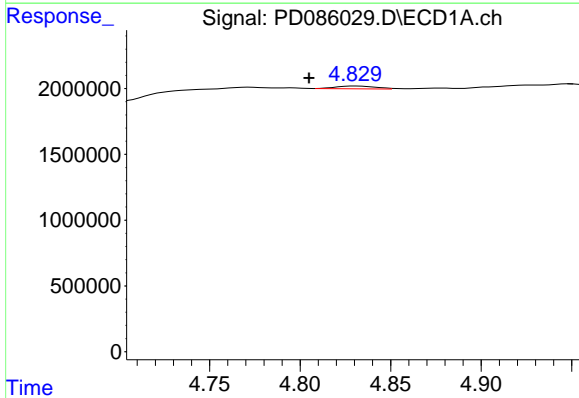
R.T.: 4.171 min  
 Delta R.T.: -0.041 min  
 Response: 12510943  
 Conc: 6.27 ng/ml

Instrument :  
 ECD\_D  
 ClientSampleId :  
 EOAG1



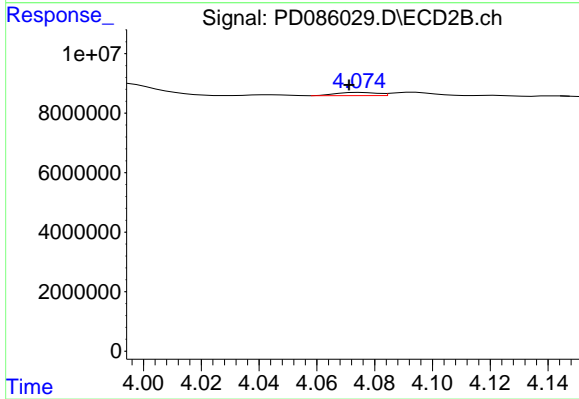
#3 gamma-BHC (Lindane)

R.T.: 3.735 min  
 Delta R.T.: 0.015 min  
 Response: 333324  
 Conc: N.D.



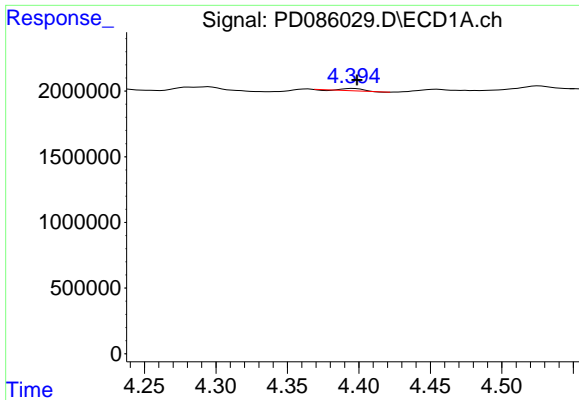
#4 Heptachlor

R.T.: 4.831 min  
 Delta R.T.: 0.026 min  
 Response: 307801  
 Conc: 0.16 ng/ml



#4 Heptachlor

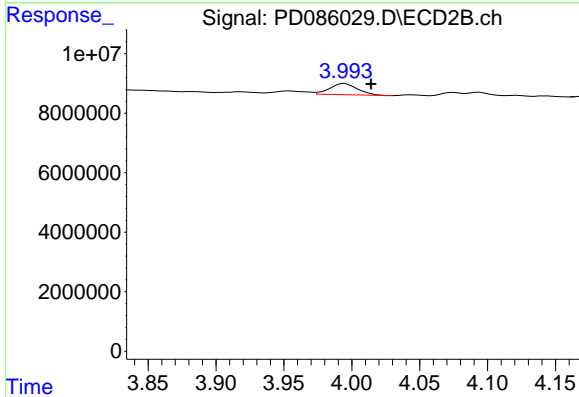
R.T.: 4.075 min  
 Delta R.T.: 0.004 min  
 Response: 1054588  
 Conc: 0.14 ng/ml



#6 beta-BHC

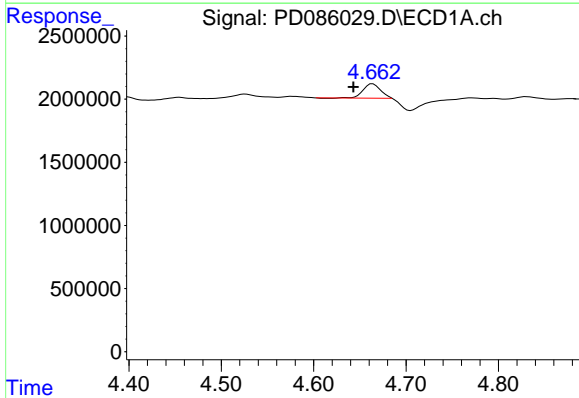
R.T.: 4.396 min  
 Delta R.T.: -0.003 min  
 Response: 146965  
 Conc: 0.14 ng/ml

Instrument :  
 ECD\_D  
 ClientSampleId :  
 EOAG1



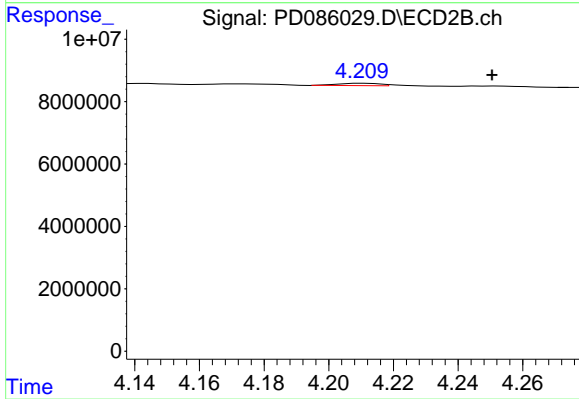
#6 beta-BHC

R.T.: 3.995 min  
 Delta R.T.: -0.019 min  
 Response: 5369900  
 Conc: 1.19 ng/ml



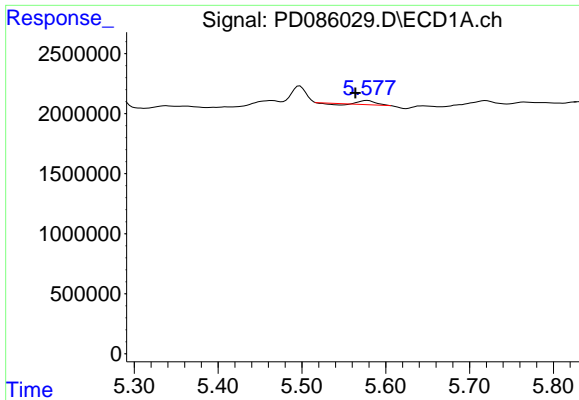
#7 delta-BHC

R.T.: 4.664 min  
 Delta R.T.: 0.021 min  
 Response: 1470117  
 Conc: 0.67 ng/ml



#7 delta-BHC

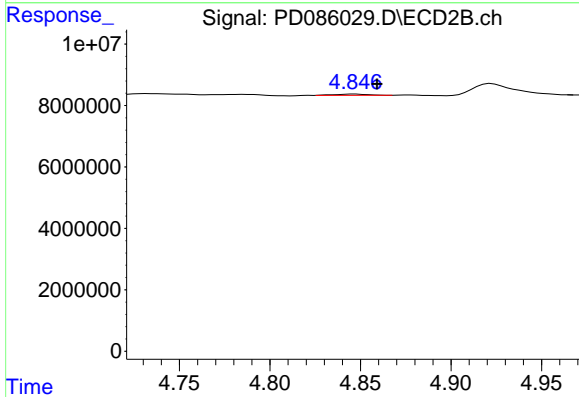
R.T.: 4.211 min  
 Delta R.T.: -0.039 min  
 Response: 637617  
 Conc: N.D.



#8 Heptachlor epoxide

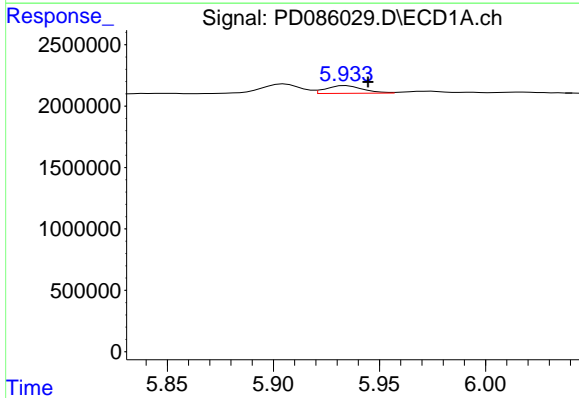
R.T.: 5.578 min  
 Delta R.T.: 0.015 min  
 Response: 349511  
 Conc: 0.16 ng/ml

Instrument :  
 ECD\_D  
 ClientSampleId :  
 EOAG1



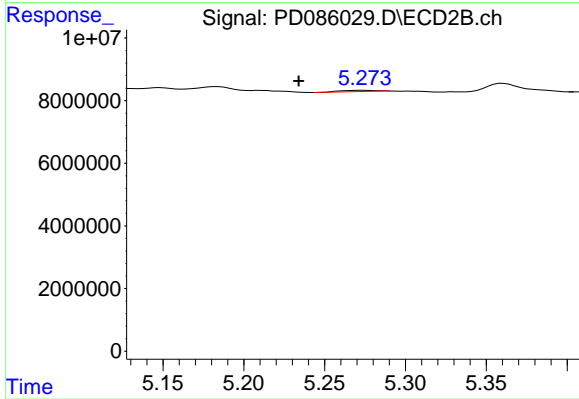
#8 Heptachlor epoxide

R.T.: 4.847 min  
 Delta R.T.: -0.012 min  
 Response: 541845  
 Conc: N.D.



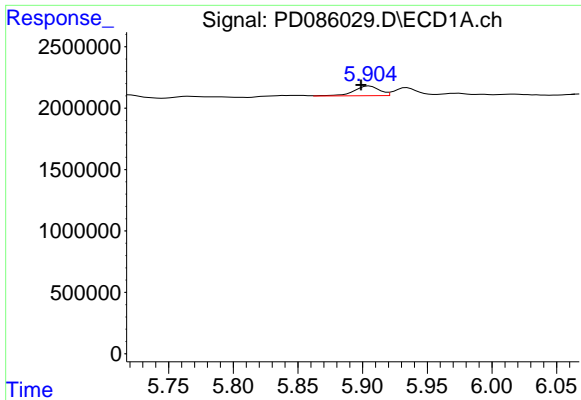
#9 Endosulfan I

R.T.: 5.935 min  
 Delta R.T.: -0.010 min  
 Response: 762790  
 Conc: 0.42 ng/ml



#9 Endosulfan I

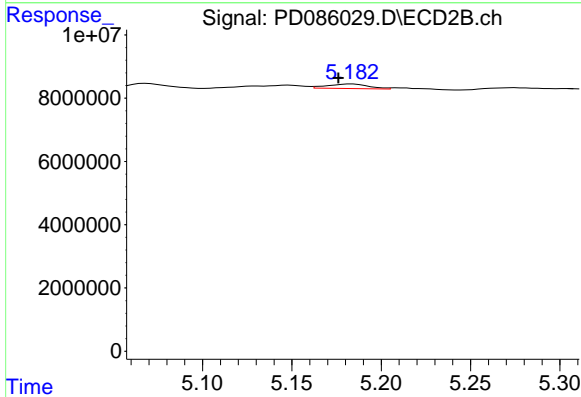
R.T.: 5.274 min  
 Delta R.T.: 0.040 min  
 Response: 519907  
 Conc: N.D.



#11 cis-Chlordane

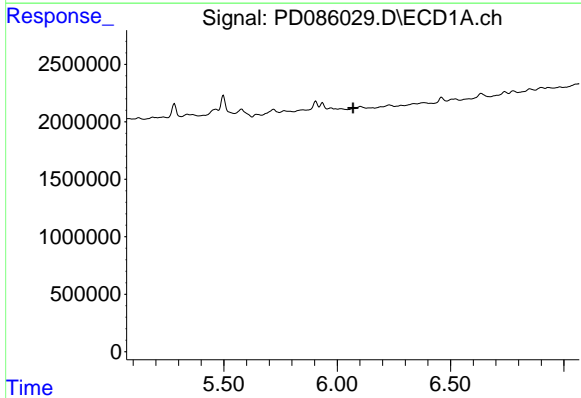
R.T.: 5.905 min  
 Delta R.T.: 0.006 min  
 Response: 1082269  
 Conc: 0.47 ng/ml

Instrument :  
 ECD\_D  
 ClientSampleId :  
 EOAG1



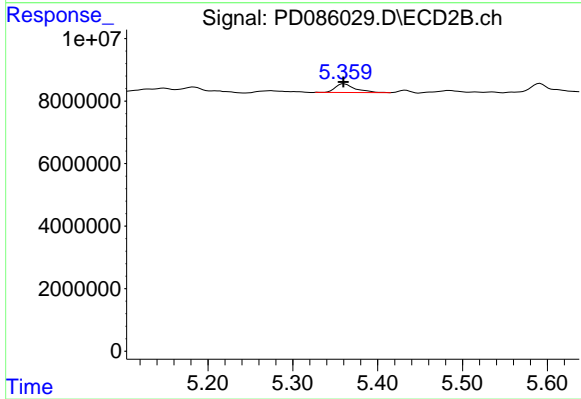
#11 cis-Chlordane

R.T.: 5.183 min  
 Delta R.T.: 0.007 min  
 Response: 2278880  
 Conc: 0.25 ng/ml



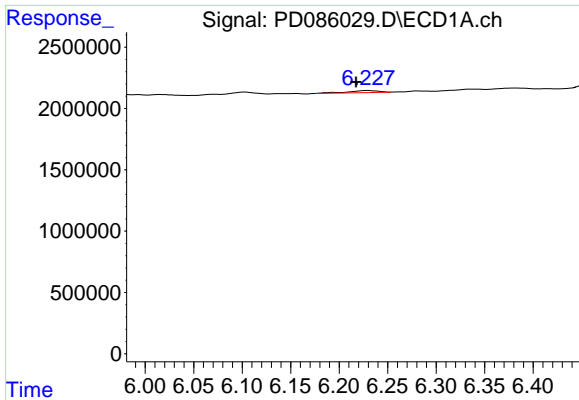
#12 4,4'-DDE

R.T.: 6.103 min  
 Delta R.T.: 0.032 min  
 Response: -5872  
 Conc: N.D.



#12 4,4'-DDE

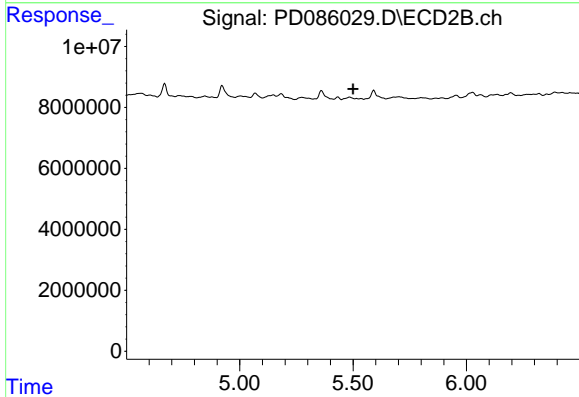
R.T.: 5.360 min  
 Delta R.T.: 0.000 min  
 Response: 4575893  
 Conc: 0.61 ng/ml



#13 Dieldrin

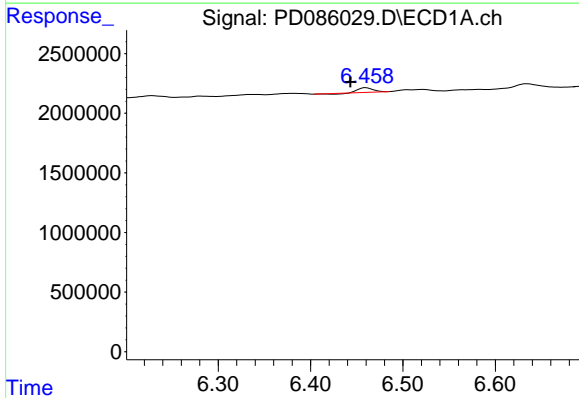
R.T.: 6.229 min  
 Delta R.T.: 0.012 min  
 Response: 374305  
 Conc: 0.19 ng/ml

Instrument :  
 ECD\_D  
 ClientSampleId :  
 EOAG1



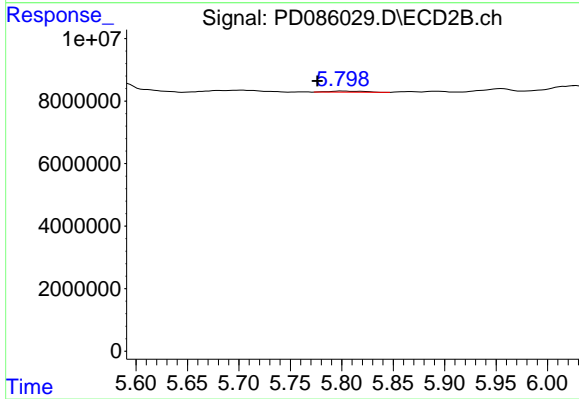
#13 Dieldrin

R.T.: 5.485 min  
 Delta R.T.: -0.015 min  
 Response: -436381  
 Conc: N.D.



#14 Endrin

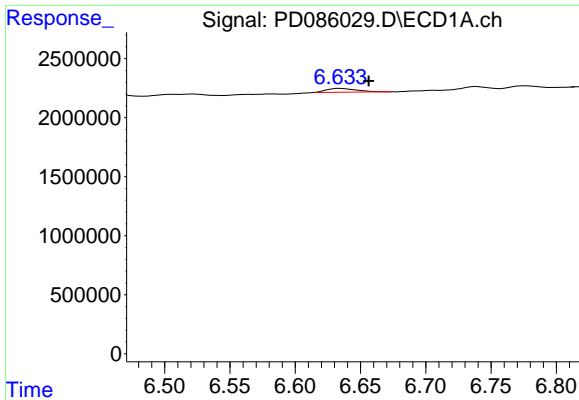
R.T.: 6.460 min  
 Delta R.T.: 0.017 min  
 Response: 407913  
 Conc: 0.26 ng/ml



#14 Endrin

R.T.: 5.800 min  
 Delta R.T.: 0.024 min  
 Response: 832453  
 Conc: 0.14 ng/ml

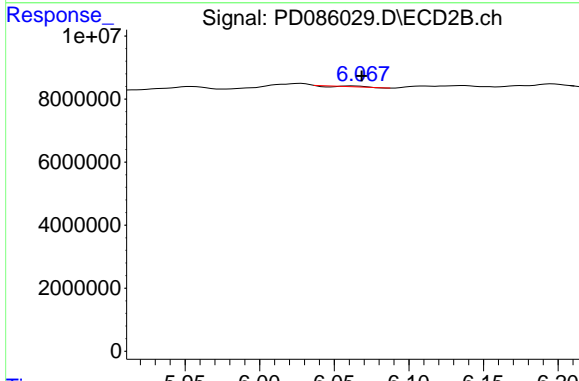




#15 Endosulfan II

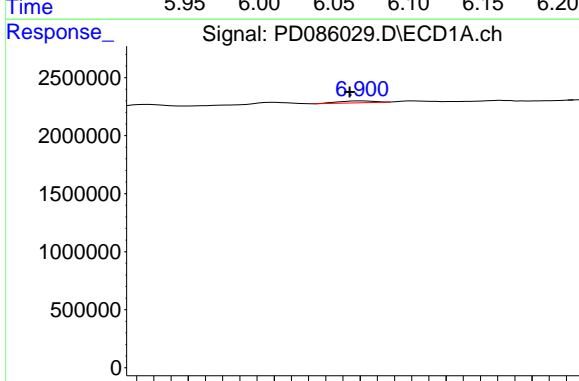
R.T.: 6.635 min  
 Delta R.T.: -0.022 min  
 Response: 520284  
 Conc: 0.26 ng/ml

Instrument :  
 ECD\_D  
 ClientSampleId :  
 EOAG1



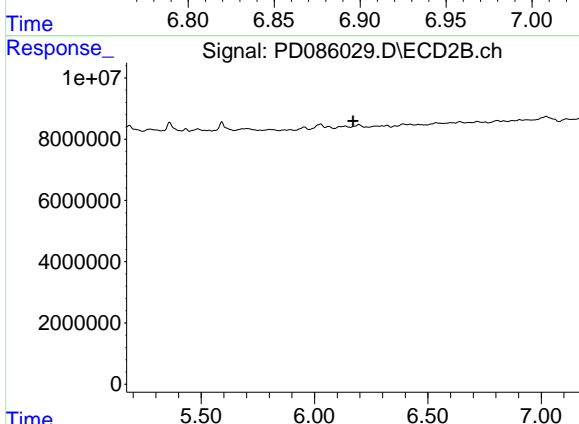
#15 Endosulfan II

R.T.: 6.063 min  
 Delta R.T.: -0.006 min  
 Response: 96229  
 Conc: N.D.



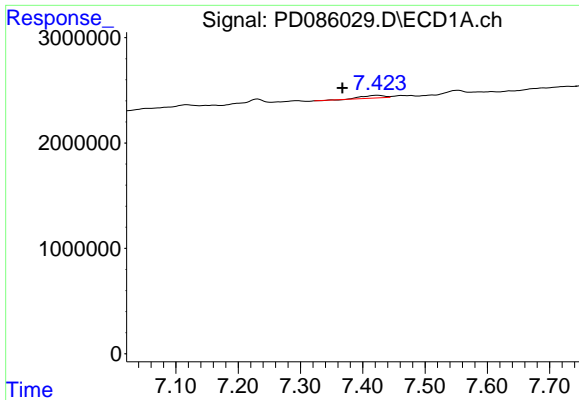
#17 4,4'-DDT

R.T.: 6.901 min  
 Delta R.T.: 0.007 min  
 Response: 223920  
 Conc: 0.17 ng/ml



#17 4,4'-DDT

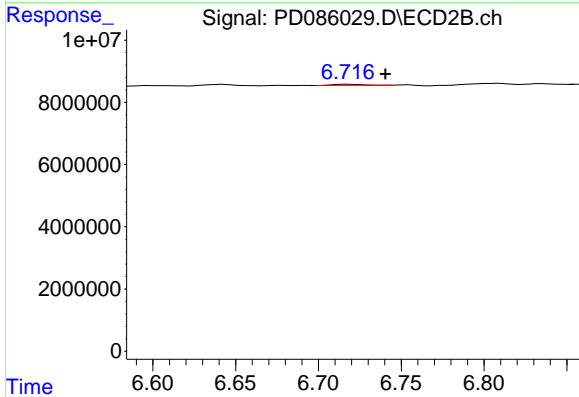
R.T.: 6.176 min  
 Delta R.T.: 0.006 min  
 Response: -169348  
 Conc: N.D.



#20 Methoxychlor

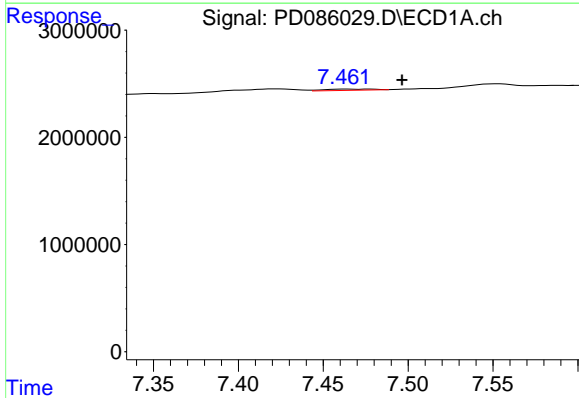
R.T.: 7.424 min  
 Delta R.T.: 0.056 min  
 Response: 635190  
 Conc: 0.79 ng/ml

Instrument :  
 ECD\_D  
 ClientSampleId :  
 EOAG1



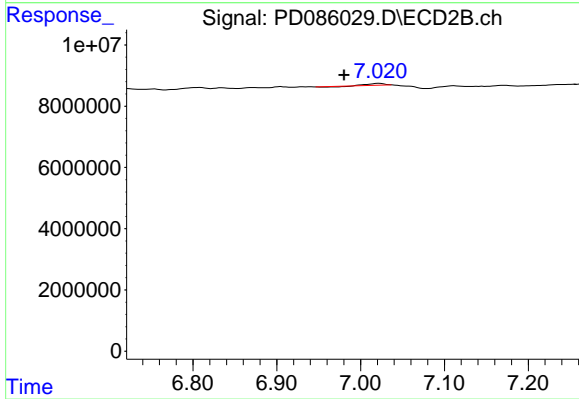
#20 Methoxychlor

R.T.: 6.717 min  
 Delta R.T.: -0.023 min  
 Response: 431853  
 Conc: 0.21 ng/ml



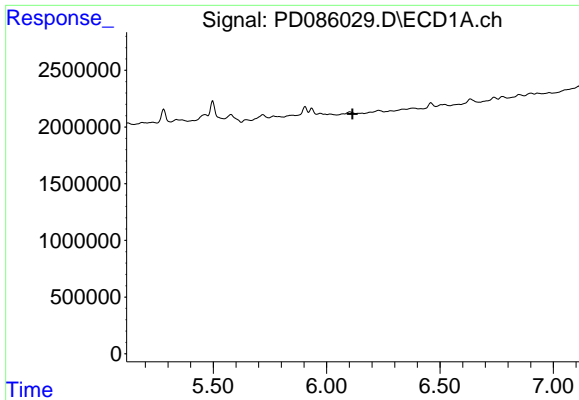
#21 Endrin ketone

R.T.: 7.463 min  
 Delta R.T.: -0.033 min  
 Response: 236499  
 Conc: 0.12 ng/ml



#21 Endrin ketone

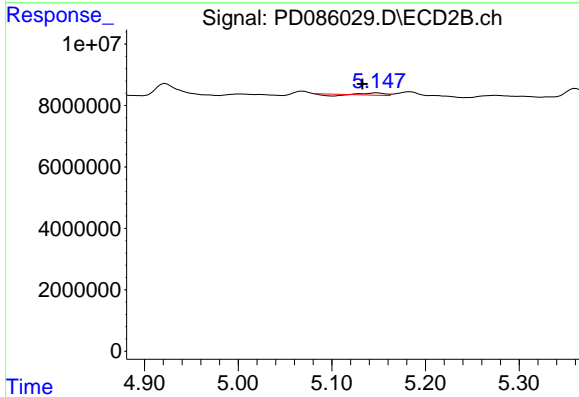
R.T.: 7.022 min  
 Delta R.T.: 0.041 min  
 Response: 687657  
 Conc: N.D.



#22 Toxaphene-1

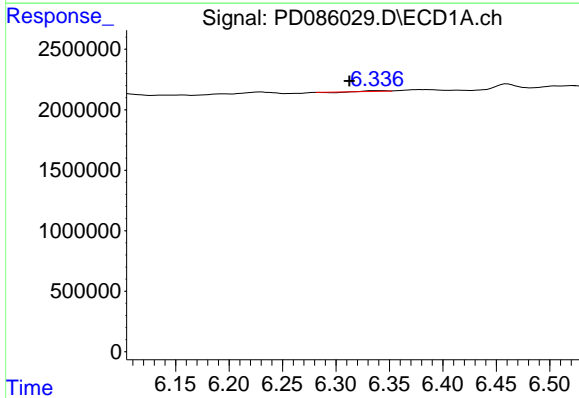
R.T.: 6.103 min  
 Delta R.T.: -0.012 min  
 Response: -5872  
 Conc: N.D.

Instrument :  
 ECD\_D  
 ClientSampleId :  
 EOAG1



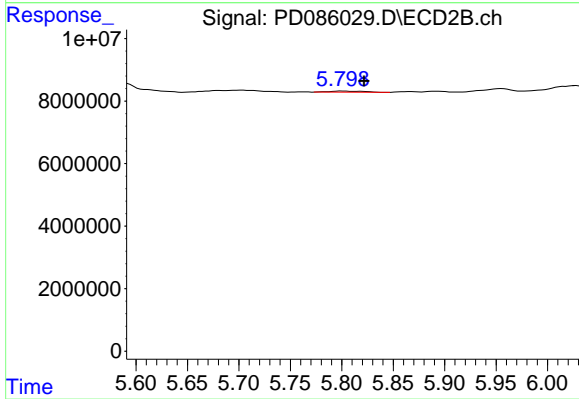
#22 Toxaphene-1

R.T.: 5.148 min  
 Delta R.T.: 0.016 min  
 Response: 644126  
 Conc: 16.74 ng/ml



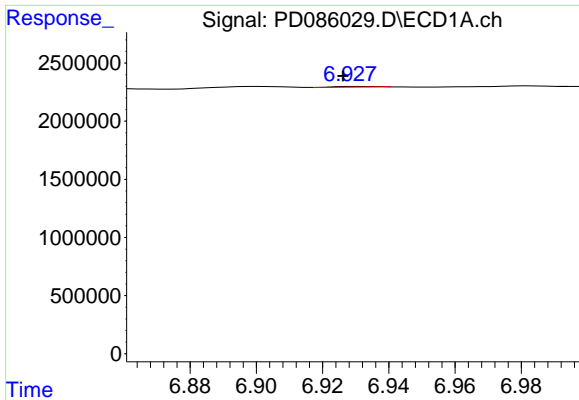
#23 Toxaphene-2

R.T.: 6.338 min  
 Delta R.T.: 0.025 min  
 Response: 10850  
 Conc: 0.63 ng/ml



#23 Toxaphene-2

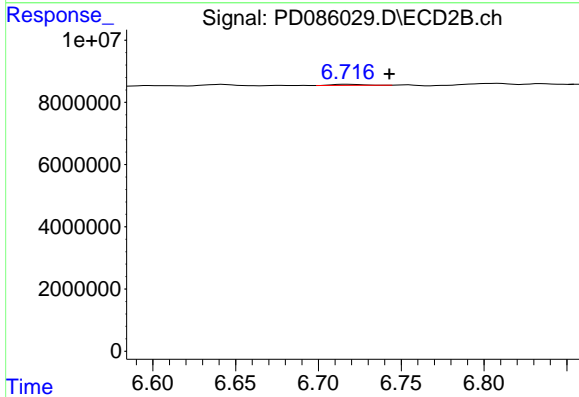
R.T.: 5.800 min  
 Delta R.T.: -0.022 min  
 Response: 832453  
 Conc: 23.78 ng/ml



#24 Toxaphene-3

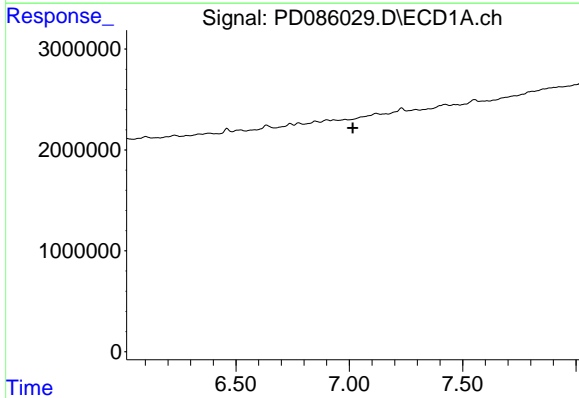
R.T.: 6.931 min  
 Delta R.T.: 0.005 min  
 Response: 79698  
 Conc: 1.79 ng/ml

Instrument :  
 ECD\_D  
 ClientSampleId :  
 EOAG1



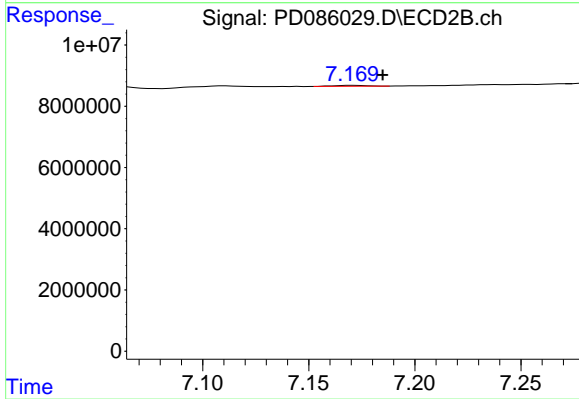
#24 Toxaphene-3

R.T.: 6.717 min  
 Delta R.T.: -0.025 min  
 Response: 431853  
 Conc: 3.64 ng/ml



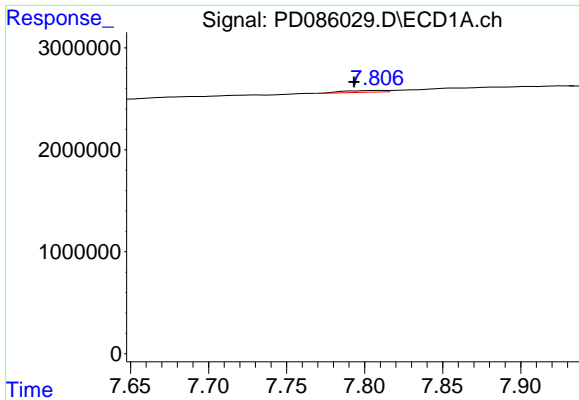
#25 Toxaphene-4

R.T.: 0.000 min  
 Exp R.T. : 7.016 min  
 Response: 0  
 Conc: N.D.



#25 Toxaphene-4

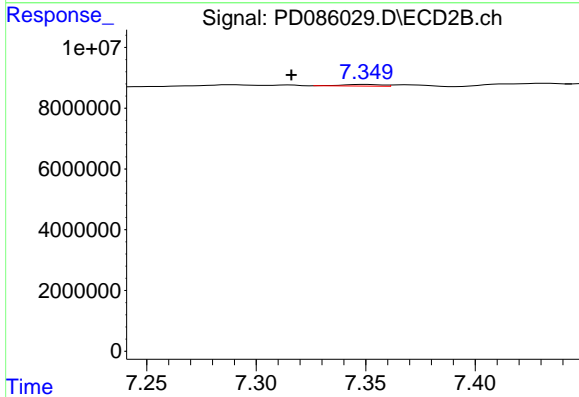
R.T.: 7.171 min  
 Delta R.T.: -0.014 min  
 Response: 312664  
 Conc: 4.14 ng/ml



#26 Toxaphene-5

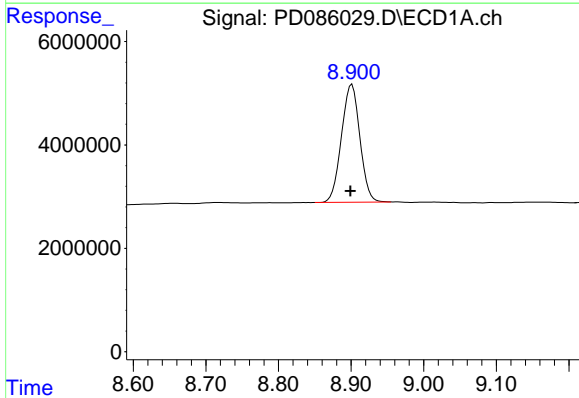
R.T.: 7.808 min  
 Delta R.T.: 0.015 min  
 Response: 321196  
 Conc: 12.69 ng/ml

Instrument :  
 ECD\_D  
 ClientSampleId :  
 EOAG1



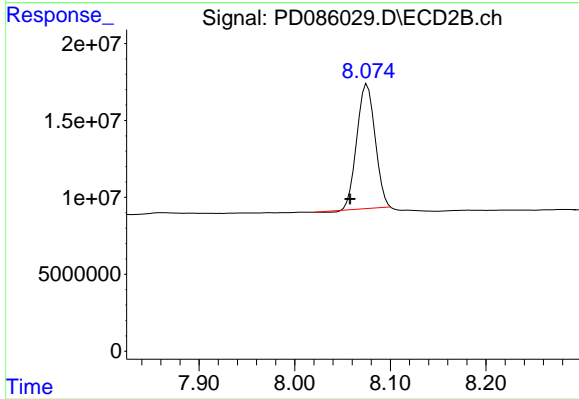
#26 Toxaphene-5

R.T.: 7.350 min  
 Delta R.T.: 0.034 min  
 Response: 662350  
 Conc: 12.00 ng/ml



#27 Decachlorobiphenyl

R.T.: 8.901 min  
 Delta R.T.: 0.002 min  
 Response: 40223934  
 Conc: 20.86 ng/ml



#27 Decachlorobiphenyl

R.T.: 8.076 min  
 Delta R.T.: 0.018 min  
 Response: 107144714  
 Conc: 22.03 ng/ml