

Data Path : Z:\pestpcbsrv\HPCHEM1\ECD_D\Data\PD101424\
 Data File : PD086002.D
 Signal(s) : Signal #1: ECD1A.ch Signal #2: ECD2B.ch
 Acq On : 14 Oct 2024 13:57
 Operator : AR\AJ
 Sample : P4350-05
 Misc :
 ALS Vial : 9 Sample Multiplier: 1

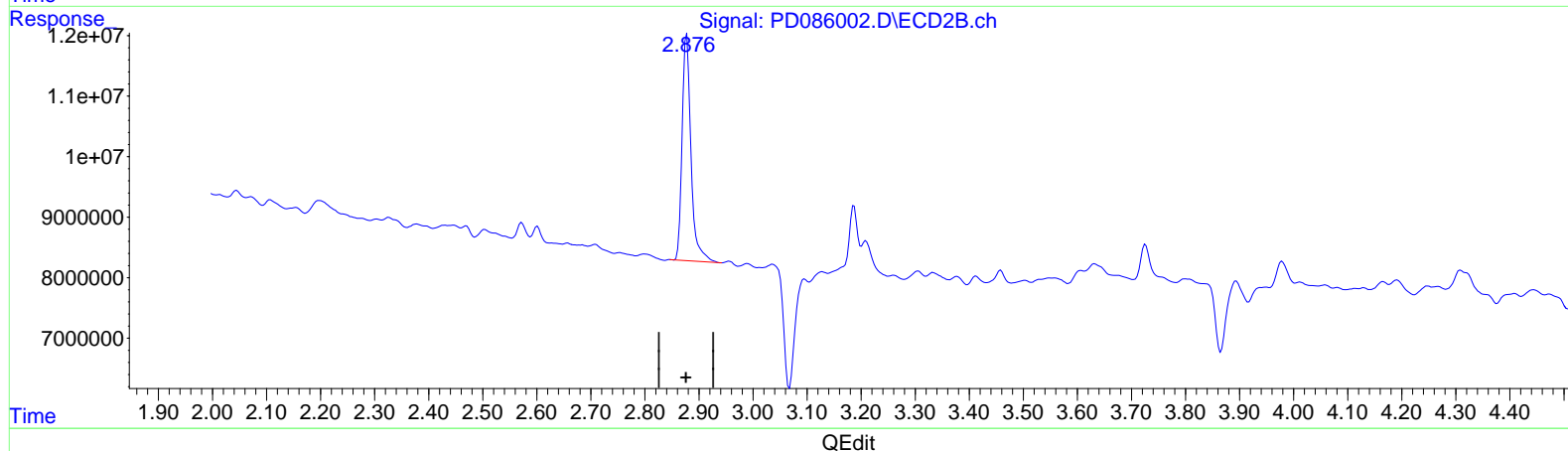
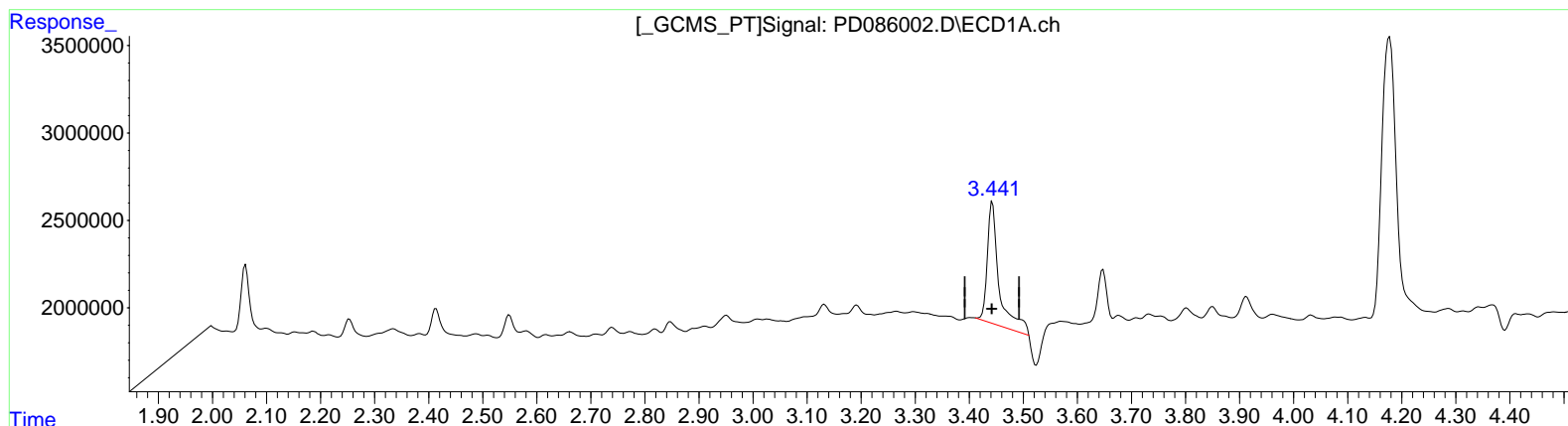
Instrument :
 ECD_D
 ClientSampleId :
 EOAK7

Manual Integrations APPROVED

Reviewed By : Abdul Mirza 10/15/2024
 Supervised By : Ankita Jodhani 10/15/2024

Integration File signal 1: autoint1.e
 Integration File signal 2: autoint2.e
 Quant Time: Oct 15 01:41:40 2024
 Quant Method : Z:\pestpcbsrv\HPCHEM1\ECD_D\Method\PD100924CLP.M
 Quant Title : GC Extractables
 QLast Update : Wed Oct 09 17:21:49 2024
 Response via : Initial Calibration
 Integrator: ChemStation

Volume Inj. : 1 µl
 Signal #1 Phase : ZB-MR1 Signal #2 Phase: ZB-MR2
 Signal #1 Info : 30M x 0.32mm x 0.5 Signal #2 Info : 30M x 0.32mm x 0.25µm



(1) Tetrachloro-m-xylene (SA)
 3.443min 9.123 ng/ml
 response 10435334

(1) Tetrachloro-m-xylene #2 (SA)
 2.877min 6.879 ng/ml
 response 42721472

Data Path : Z:\pestpcbsrv\HPCHEM1\ECD_D\Data\PD101424\
 Data File : PD086002.D
 Signal(s) : Signal #1: ECD1A.ch Signal #2: ECD2B.ch
 Acq On : 14 Oct 2024 13:57
 Operator : AR\AJ
 Sample : P4350-05
 Misc :
 ALS Vial : 9 Sample Multiplier: 1

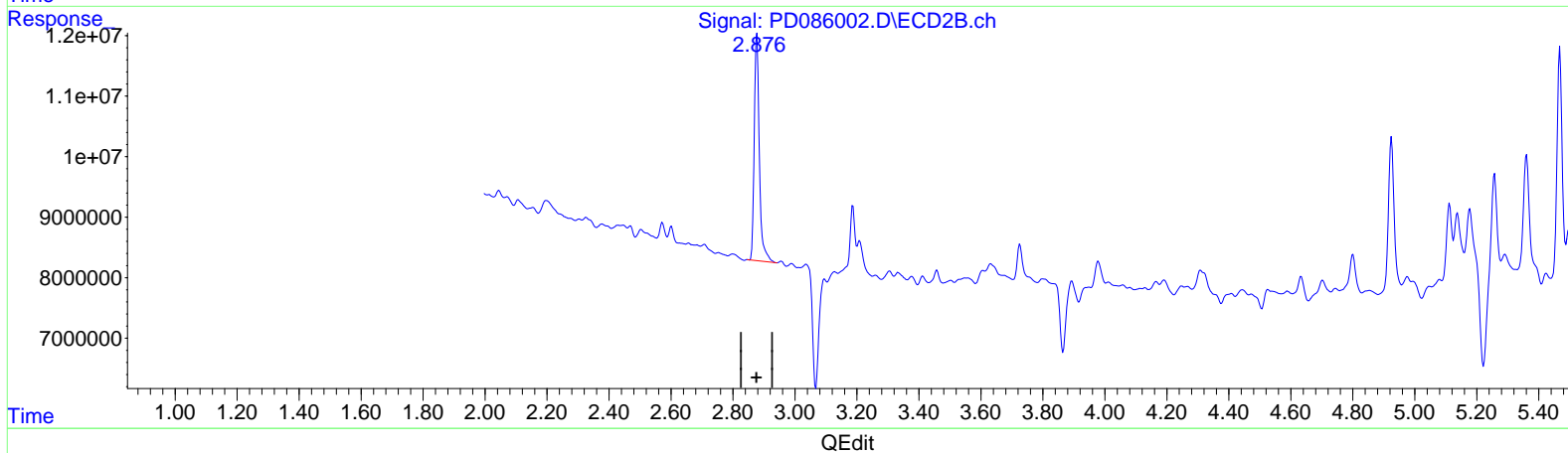
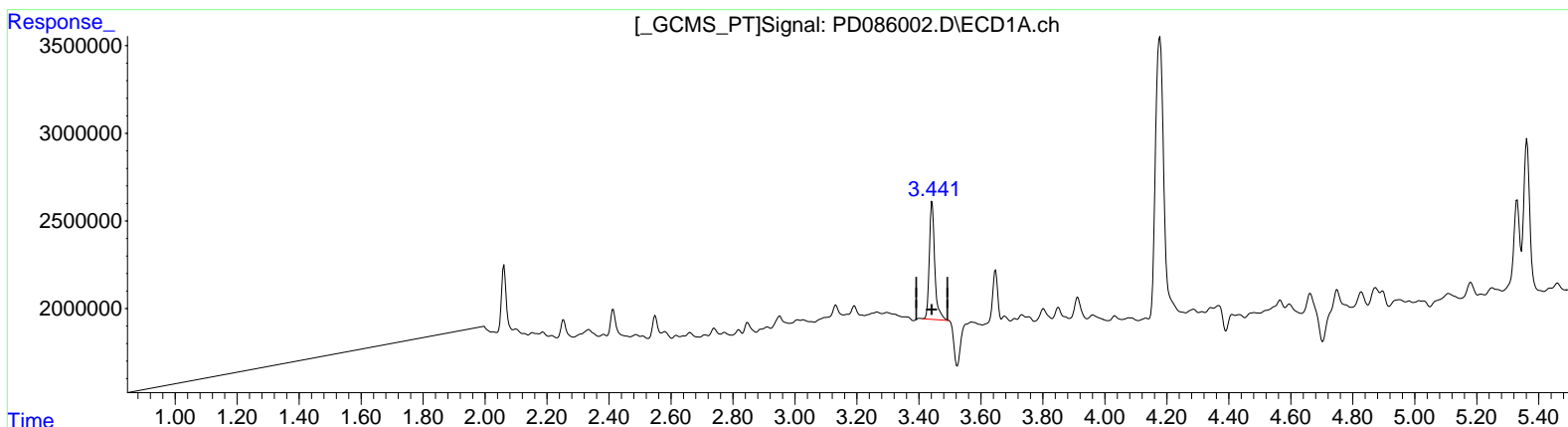
Instrument :
 ECD_D
 ClientSampleId :
 EOAK7

Manual Integrations APPROVED

Reviewed By : Abdul Mirza 10/15/2024
 Supervised By : Ankita Jodhani 10/15/2024

Integration File signal 1: autoint1.e
 Integration File signal 2: autoint2.e
 Quant Time: Oct 15 01:41:40 2024
 Quant Method : Z:\pestpcbsrv\HPCHEM1\ECD_D\Method\PD100924CLP.M
 Quant Title : GC Extractables
 QLast Update : Wed Oct 09 17:21:49 2024
 Response via : Initial Calibration
 Integrator: ChemStation

Volume Inj. : 1 µl
 Signal #1 Phase : ZB-MR1 Signal #2 Phase: ZB-MR2
 Signal #1 Info : 30M x 0.32mm x 0.5 Signal #2 Info : 30M x 0.32mm x 0.25µm



(1) Tetrachloro-m-xylene (SA)
 3.441min 7.129 ng/ml m
 response 8154040

(1) Tetrachloro-m-xylene #2 (SA)
 2.877min 6.879 ng/ml
 response 42721472

Data Path : Z:\pestpcbsrv\HPCHEM1\ECD_D\Data\PD101424\
 Data File : PD086002.D
 Signal(s) : Signal #1: ECD1A.ch Signal #2: ECD2B.ch
 Acq On : 14 Oct 2024 13:57
 Operator : AR\AJ
 Sample : P4350-05
 Misc :
 ALS Vial : 9 Sample Multiplier: 1

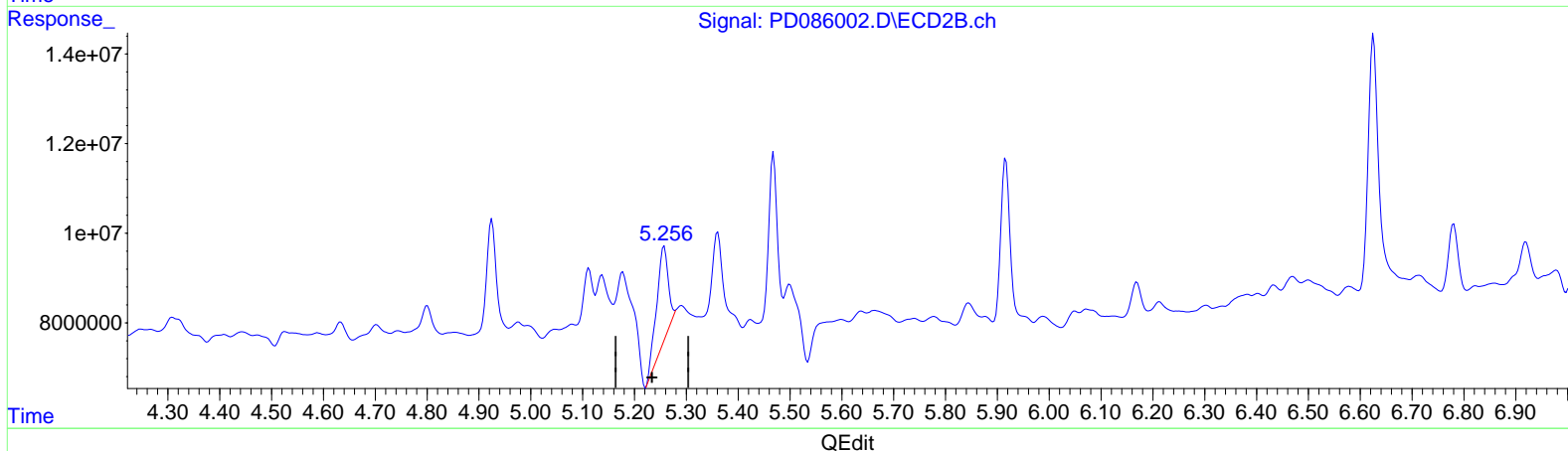
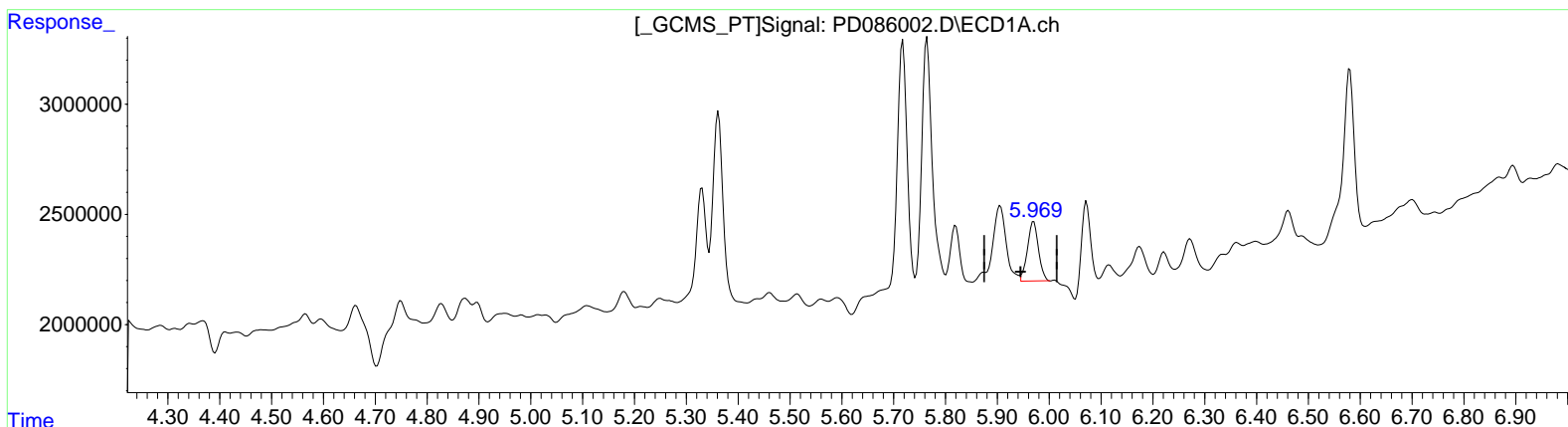
Instrument :
 ECD_D
 ClientSampleId :
 EOAK7

Manual Integrations APPROVED

Reviewed By : Abdul Mirza 10/15/2024
 Supervised By : Ankita Jodhani 10/15/2024

Integration File signal 1: autoint1.e
 Integration File signal 2: autoint2.e
 Quant Time: Oct 15 01:41:40 2024
 Quant Method : Z:\pestpcbsrv\HPCHEM1\ECD_D\Method\PD100924CLP.M
 Quant Title : GC Extractables
 QLast Update : Wed Oct 09 17:21:49 2024
 Response via : Initial Calibration
 Integrator: ChemStation

Volume Inj. : 1 µl
 Signal #1 Phase : ZB-MR1 Signal #2 Phase: ZB-MR2
 Signal #1 Info : 30M x 0.32mm x 0.5 Signal #2 Info : 30M x 0.32mm x 0.25µm



(9) Endosulfan I (A)
 5.970min 1.977 ng/ml
 response 3606362

(9) Endosulfan I #2 (A)
 5.258min 4.571 ng/ml
 response 31684389

Data Path : Z:\pestpcbsrv\HPCHEM1\ECD_D\Data\PD101424\
 Data File : PD086002.D
 Signal(s) : Signal #1: ECD1A.ch Signal #2: ECD2B.ch
 Acq On : 14 Oct 2024 13:57
 Operator : AR\AJ
 Sample : P4350-05
 Misc :
 ALS Vial : 9 Sample Multiplier: 1

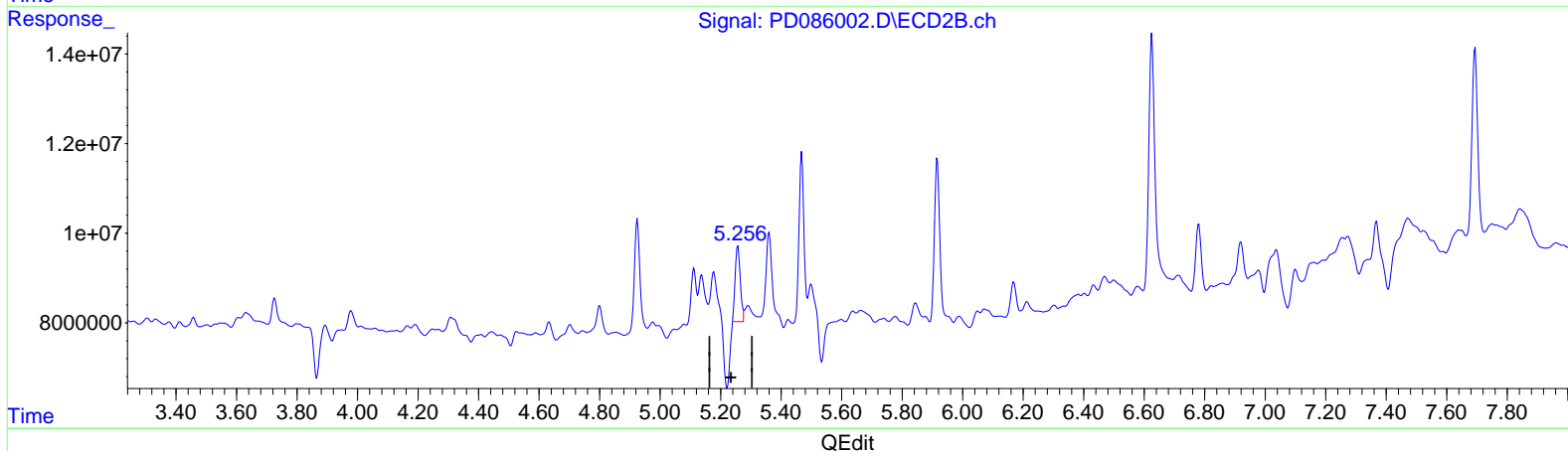
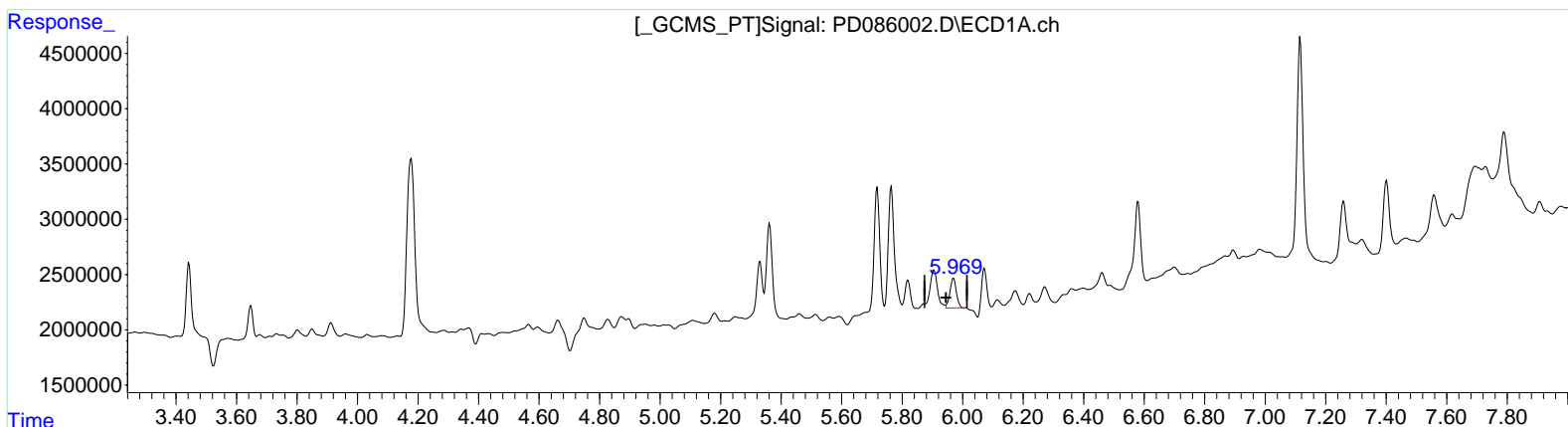
Instrument :
 ECD_D
 ClientSampleId :
 EOAK7

Manual Integrations APPROVED

Reviewed By : Abdul Mirza 10/15/2024
 Supervised By : Ankita Jodhani 10/15/2024

Integration File signal 1: autoint1.e
 Integration File signal 2: autoint2.e
 Quant Time: Oct 15 01:41:40 2024
 Quant Method : Z:\pestpcbsrv\HPCHEM1\ECD_D\Method\PD100924CLP.M
 Quant Title : GC Extractables
 QLast Update : Wed Oct 09 17:21:49 2024
 Response via : Initial Calibration
 Integrator: ChemStation

Volume Inj. : 1 µl
 Signal #1 Phase : ZB-MR1 Signal #2 Phase: ZB-MR2
 Signal #1 Info : 30M x 0.32mm x 0.5 Signal #2 Info : 30M x 0.32mm x 0.25µm



(9) Endosulfan I (A)
 5.970min 1.977 ng/ml
 response 3606362

(9) Endosulfan I #2 (A)
 5.256min 2.869 ng/ml m
 response 19885781

Data Path : Z:\pestpcbsrv\HPCHEM1\ECD_D\Data\PD101424\
 Data File : PD086002.D
 Signal(s) : Signal #1: ECD1A.ch Signal #2: ECD2B.ch
 Acq On : 14 Oct 2024 13:57
 Operator : AR\AJ
 Sample : P4350-05
 Misc :
 ALS Vial : 9 Sample Multiplier: 1

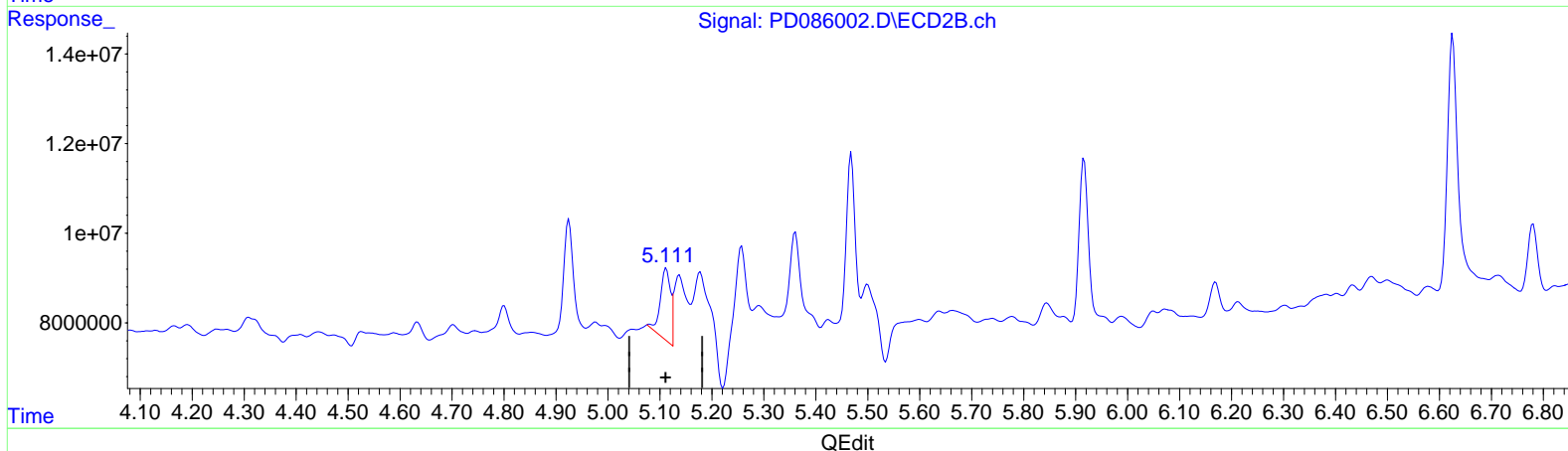
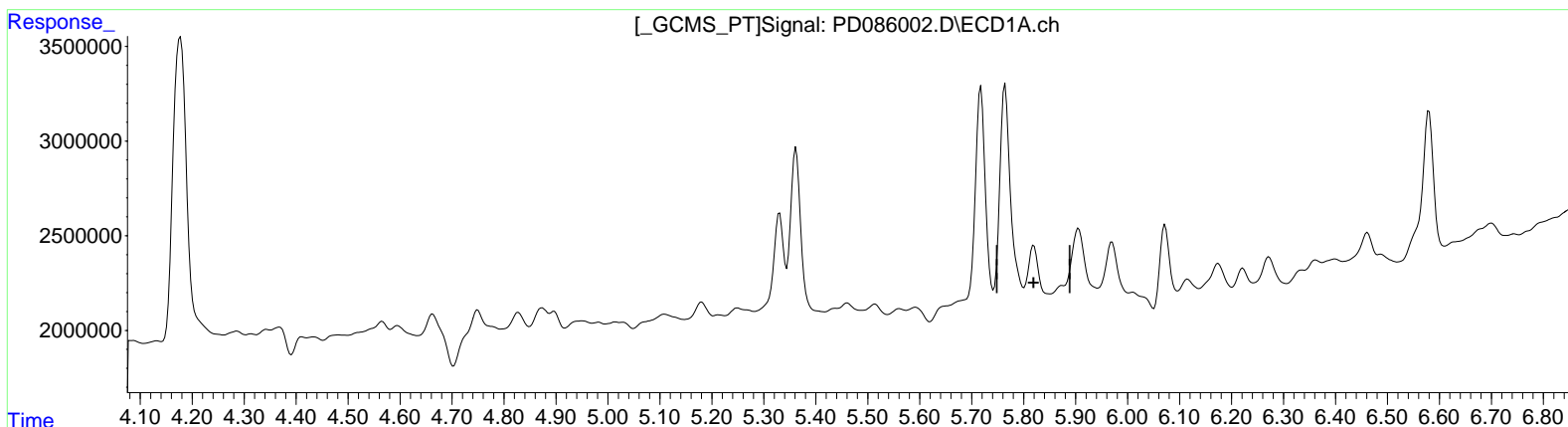
Instrument :
 ECD_D
 ClientSampleId :
 EOAK7

Manual Integrations APPROVED

Reviewed By : Abdul Mirza 10/15/2024
 Supervised By : Ankita Jodhani 10/15/2024

Integration File signal 1: autoint1.e
 Integration File signal 2: autoint2.e
 Quant Time: Oct 15 01:41:40 2024
 Quant Method : Z:\pestpcbsrv\HPCHEM1\ECD_D\Method\PD100924CLP.M
 Quant Title : GC Extractables
 QLast Update : Wed Oct 09 17:21:49 2024
 Response via : Initial Calibration
 Integrator: ChemStation

Volume Inj. : 1 µl
 Signal #1 Phase : ZB-MR1 Signal #2 Phase: ZB-MR2
 Signal #1 Info : 30M x 0.32mm x 0.5 Signal #2 Info : 30M x 0.32mm x 0.25µm



(10) trans-Chlordane (B)
 5.820min -0.105 ng/ml
 response -236810

(10) trans-Chlordane #2 (B)
 5.112min 2.445 ng/ml
 response 21991101

Data Path : Z:\pestpcbsrv\HPCHEM1\ECD_D\Data\PD101424\
 Data File : PD086002.D
 Signal(s) : Signal #1: ECD1A.ch Signal #2: ECD2B.ch
 Acq On : 14 Oct 2024 13:57
 Operator : AR\AJ
 Sample : P4350-05
 Misc :
 ALS Vial : 9 Sample Multiplier: 1

Instrument :

ECD_D

ClientSampleId :

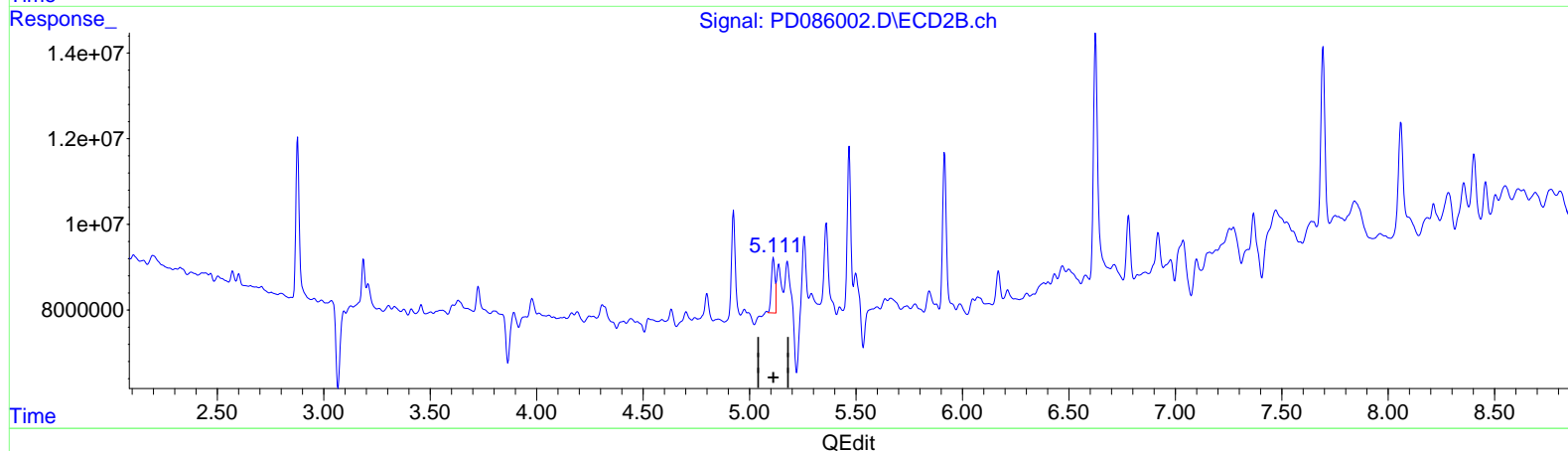
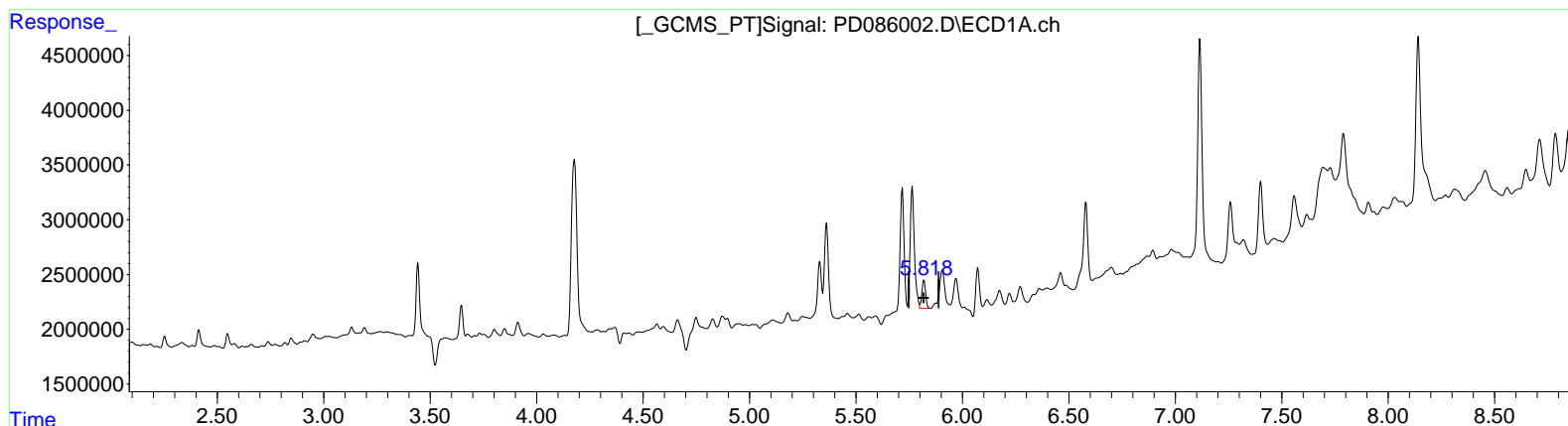
EOAK7

Manual IntegrationsAPPROVED

Reviewed By :Abdul Mirza 10/15/2024
 Supervised By :Ankita Jodhani 10/15/2024

Integration File signal 1: autoint1.e
 Integration File signal 2: autoint2.e
 Quant Time: Oct 15 01:41:40 2024
 Quant Method : Z:\pestpcbsrv\HPCHEM1\ECD_D\Method\PD100924CLP.M
 Quant Title : GC Extractables
 QLast Update : Wed Oct 09 17:21:49 2024
 Response via : Initial Calibration
 Integrator: ChemStation

Volume Inj. : 1 µl
 Signal #1 Phase : ZB-MR1 Signal #2 Phase: ZB-MR2
 Signal #1 Info : 30M x 0.32mm x0.5 Signal #2 Info : 30M x 0.32mm x 0.25µm



(10) trans-Chlordane (B)
 5.818min 1.398 ng/ml m
 response 3141908

(10) trans-Chlordane #2 (B)
 5.111min 1.841 ng/ml m
 response 16565406

Data Path : Z:\pestpcbsrv\HPCHEM1\ECD_D\Data\PD101424\
 Data File : PD086002.D
 Signal(s) : Signal #1: ECD1A.ch Signal #2: ECD2B.ch
 Acq On : 14 Oct 2024 13:57
 Operator : AR\AJ
 Sample : P4350-05
 Misc :
 ALS Vial : 9 Sample Multiplier: 1

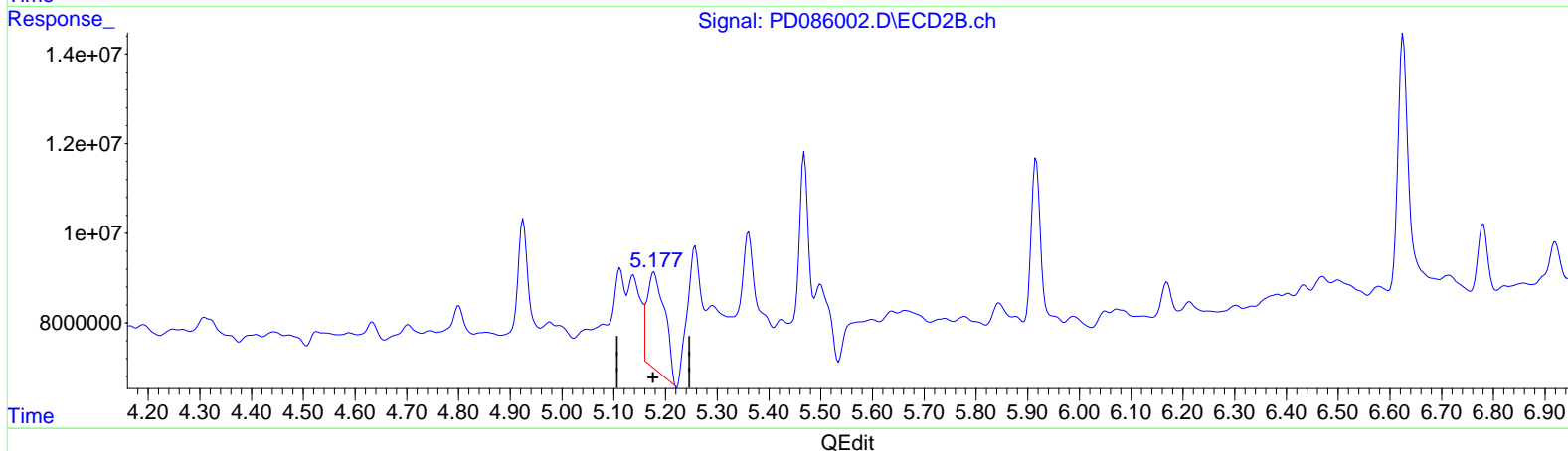
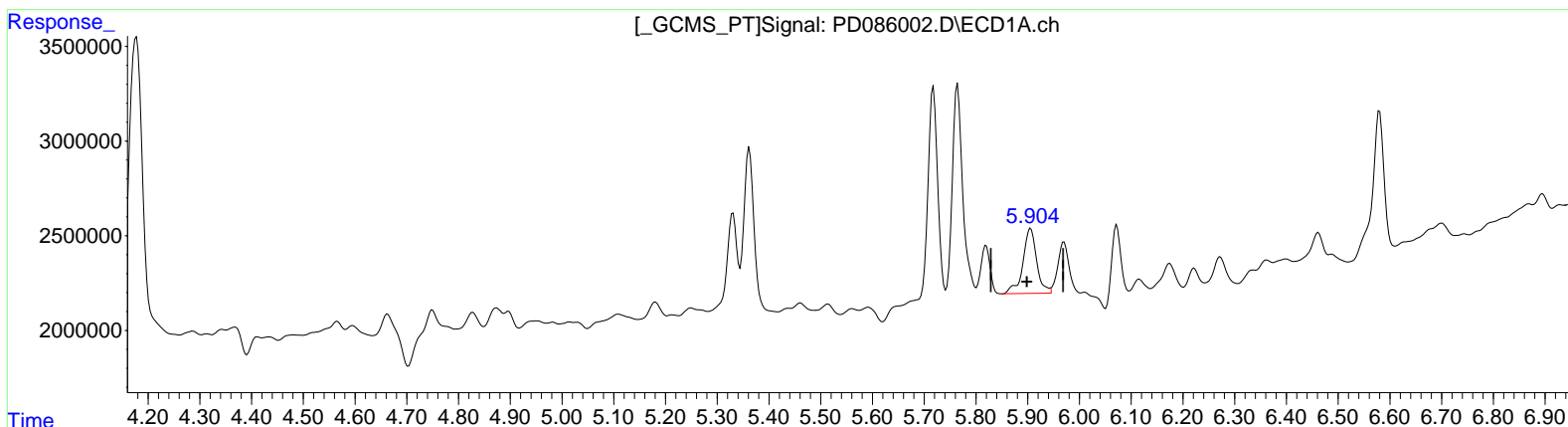
Instrument :
 ECD_D
 ClientSampleId :
 EOAK7

Manual Integrations APPROVED

Reviewed By : Abdul Mirza 10/15/2024
 Supervised By : Ankita Jodhani 10/15/2024

Integration File signal 1: autoint1.e
 Integration File signal 2: autoint2.e
 Quant Time: Oct 15 01:41:40 2024
 Quant Method : Z:\pestpcbsrv\HPCHEM1\ECD_D\Method\PD100924CLP.M
 Quant Title : GC Extractables
 QLast Update : Wed Oct 09 17:21:49 2024
 Response via : Initial Calibration
 Integrator: ChemStation

Volume Inj. : 1 µl
 Signal #1 Phase : ZB-MR1 Signal #2 Phase: ZB-MR2
 Signal #1 Info : 30M x 0.32mm x 0.5 Signal #2 Info : 30M x 0.32mm x 0.25µm



(11) cis-Chlordane (B)
 5.906min 2.791 ng/ml
 response 6366565

(11) cis-Chlordane #2 (B)
 5.178min 5.776 ng/ml
 response 51858657

Data Path : Z:\pestpcbsrv\HPCHEM1\ECD_D\Data\PD101424\
 Data File : PD086002.D
 Signal(s) : Signal #1: ECD1A.ch Signal #2: ECD2B.ch
 Acq On : 14 Oct 2024 13:57
 Operator : AR\AJ
 Sample : P4350-05
 Misc :
 ALS Vial : 9 Sample Multiplier: 1

Instrument :

ECD_D

ClientSampleId :

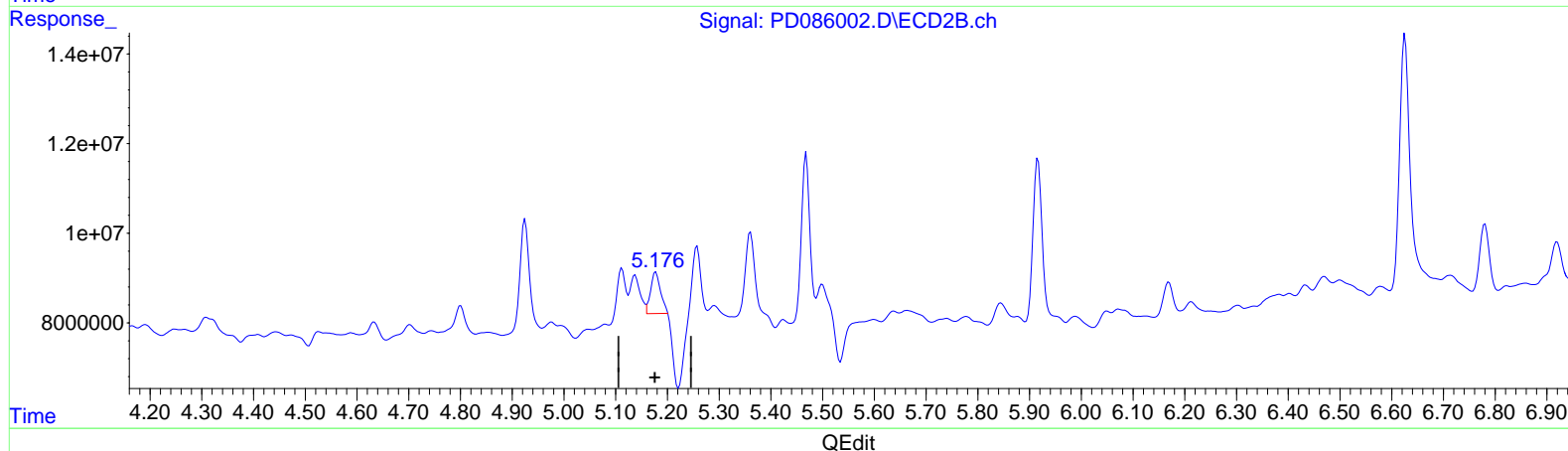
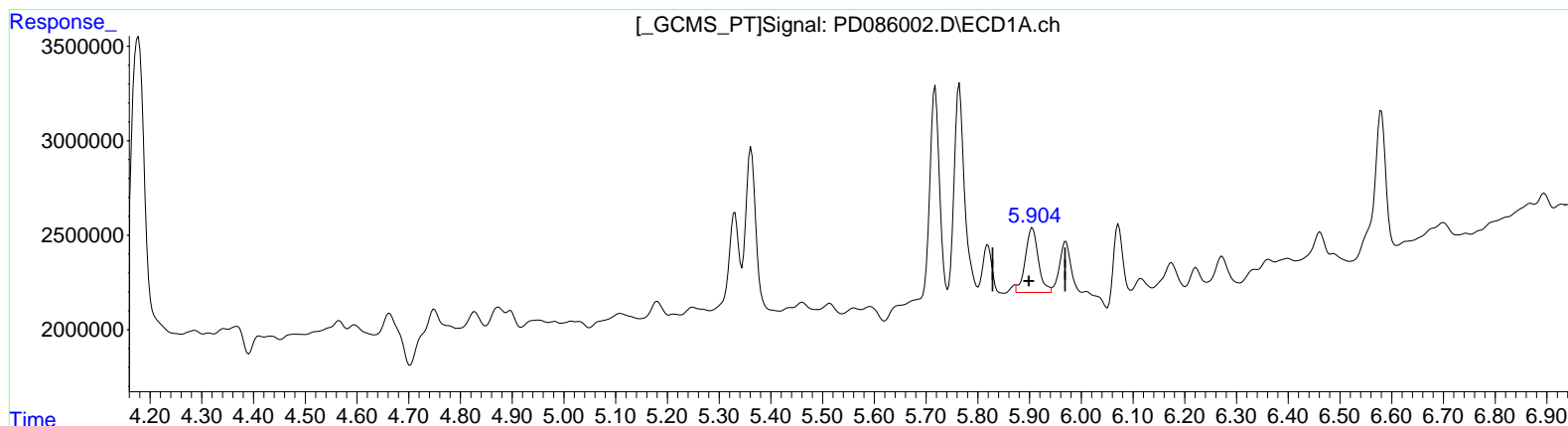
EOAK7

Manual IntegrationsAPPROVED

Reviewed By :Abdul Mirza 10/15/2024
 Supervised By :Ankita Jodhani 10/15/2024

Integration File signal 1: autoint1.e
 Integration File signal 2: autoint2.e
 Quant Time: Oct 15 01:41:40 2024
 Quant Method : Z:\pestpcbsrv\HPCHEM1\ECD_D\Method\PD100924CLP.M
 Quant Title : GC Extractables
 QLast Update : Wed Oct 09 17:21:49 2024
 Response via : Initial Calibration
 Integrator: ChemStation

Volume Inj. : 1 µl
 Signal #1 Phase : ZB-MR1 Signal #2 Phase: ZB-MR2
 Signal #1 Info : 30M x 0.32mm x0.5 Signal #2 Info : 30M x 0.32mm x 0.25µm



(11) cis-Chlordane (B)
 5.904min 2.629 ng/ml m
 response 5997100

(11) cis-Chlordane #2 (B)
 5.176min 1.365 ng/ml m
 response 12250537

Data Path : Z:\pestpcbsrv\HPCHEM1\ECD_D\Data\PD101424\
Data File : PD086002.D
Signal(s) : Signal #1: ECD1A.ch Signal #2: ECD2B.ch
Acq On : 14 Oct 2024 13:57
Operator : AR\AJ
Sample : P4350-05
Misc :
ALS Vial : 9 Sample Multiplier: 1

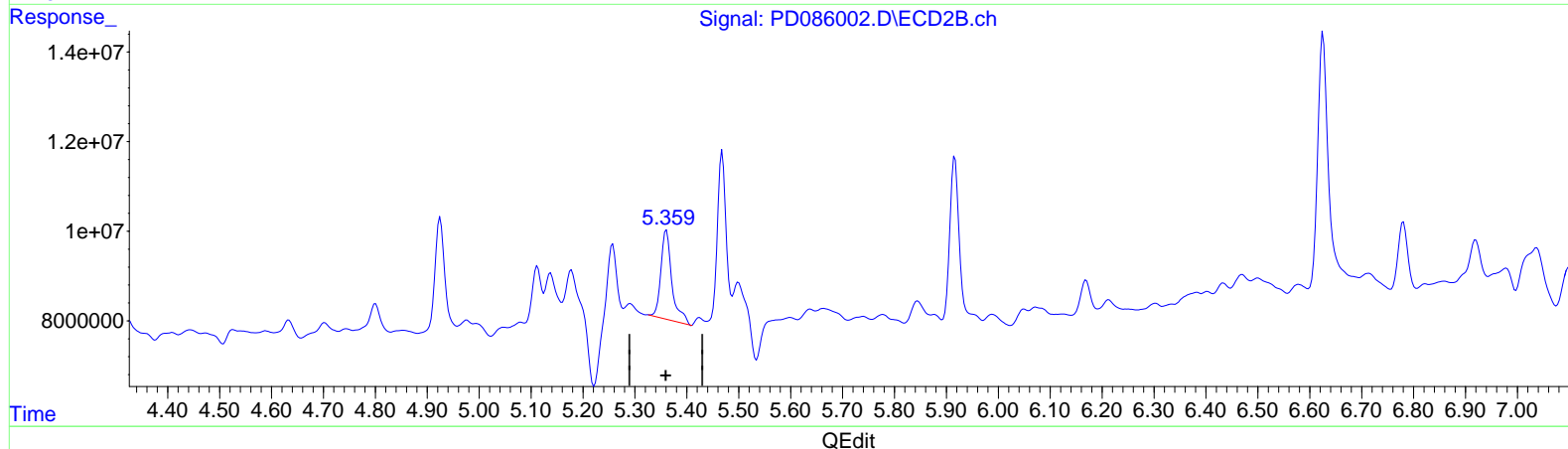
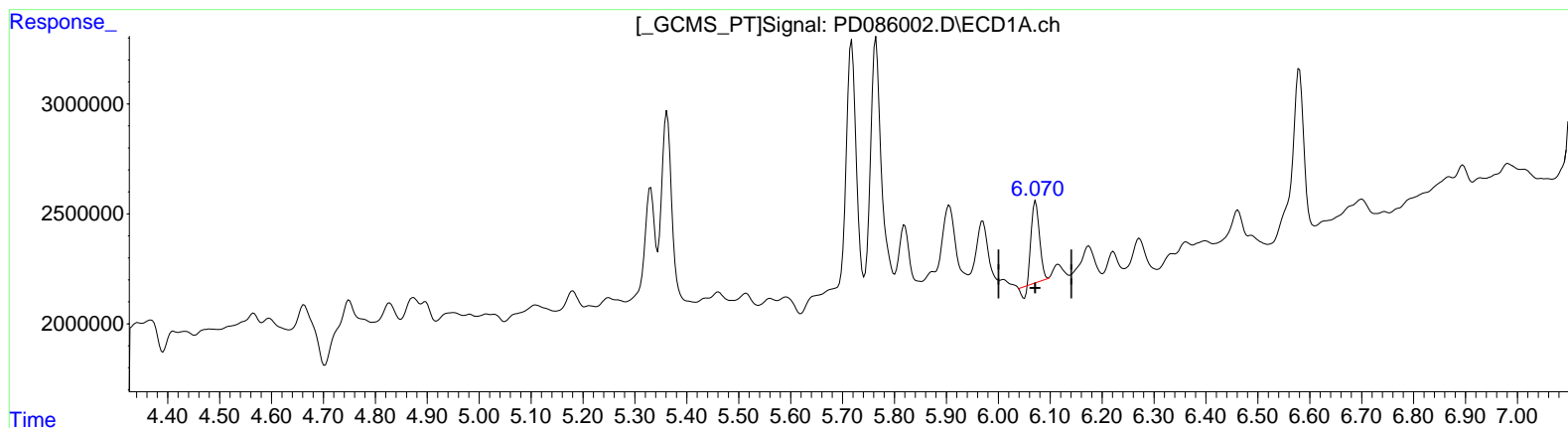
Instrument :
ECD_D
ClientSampleId :
EOAK7

Manual Integrations APPROVED

Reviewed By : Abdul Mirza 10/15/2024
Supervised By : Ankita Jodhani 10/15/2024

Integration File signal 1: autoint1.e
Integration File signal 2: autoint2.e
Quant Time: Oct 15 01:41:40 2024
Quant Method : Z:\pestpcbsrv\HPCHEM1\ECD_D\Method\PD100924CLP.M
Quant Title : GC Extractables
QLast Update : Wed Oct 09 17:21:49 2024
Response via : Initial Calibration
Integrator: ChemStation

Volume Inj. : 1 µl
Signal #1 Phase : ZB-MR1 Signal #2 Phase: ZB-MR2
Signal #1 Info : 30M x 0.32mm x 0.5 Signal #2 Info : 30M x 0.32mm x 0.25µm



(12) 4,4'-DDE (B)
6.073min 2.014 ng/ml
response 3841259

(12) 4,4'-DDE #2 (B)
5.361min 3.909 ng/ml
response 29381207

Data Path : Z:\pestpcbsrv\HPCHEM1\ECD_D\Data\PD101424\
Data File : PD086002.D
Signal(s) : Signal #1: ECD1A.ch Signal #2: ECD2B.ch
Acq On : 14 Oct 2024 13:57
Operator : AR\AJ
Sample : P4350-05
Misc :
ALS Vial : 9 Sample Multiplier: 1

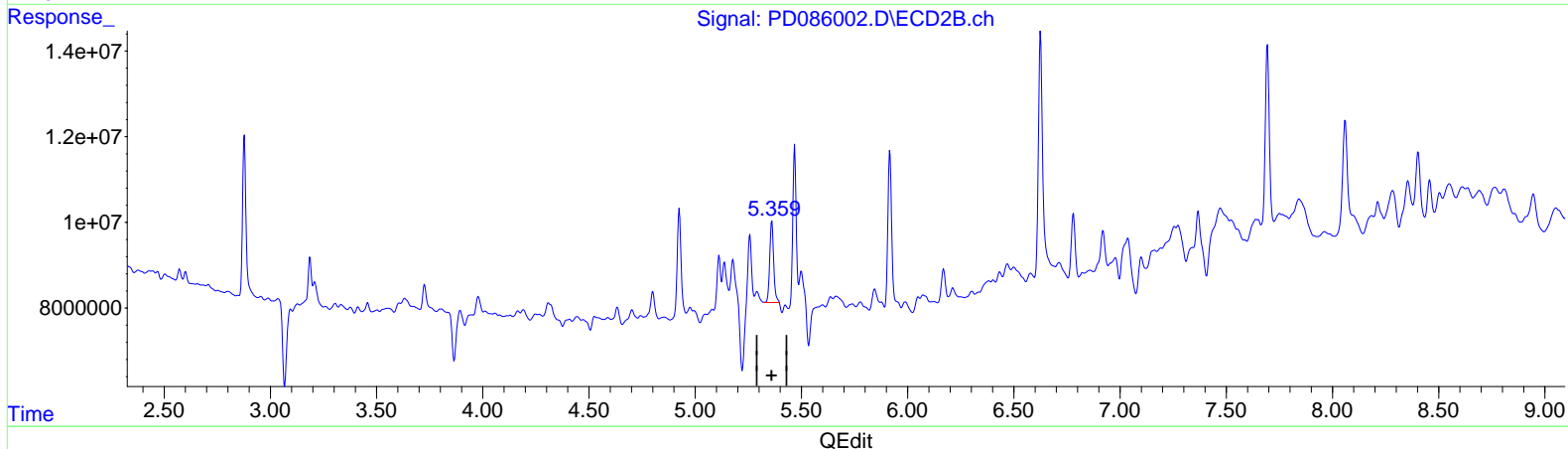
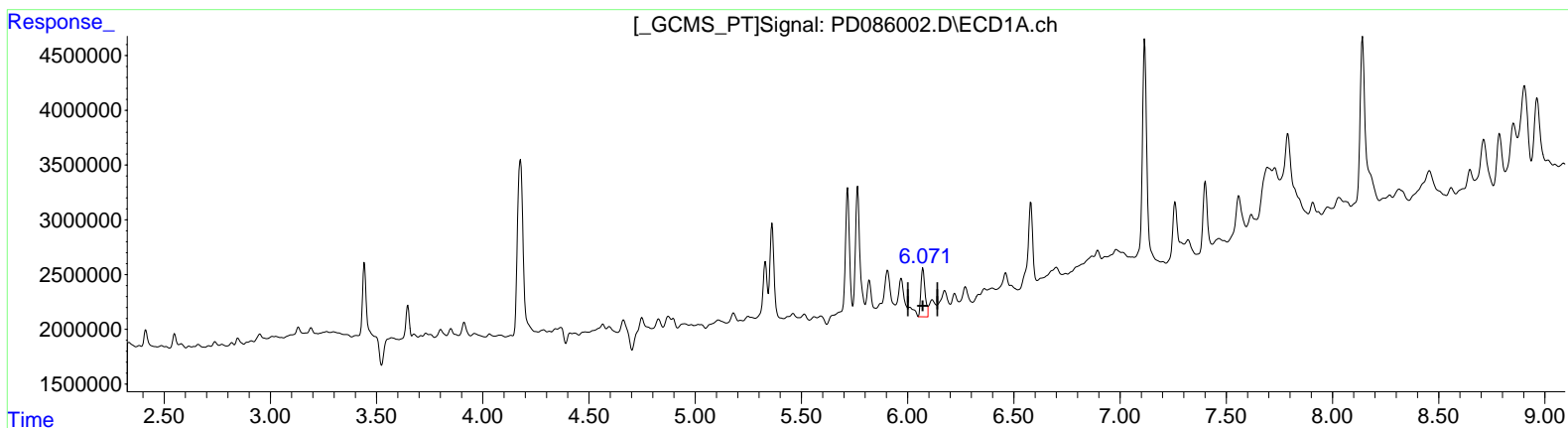
Instrument :
ECD_D
ClientSampleId :
EOAK7

Manual Integrations APPROVED

Reviewed By : Abdul Mirza 10/15/2024
Supervised By : Ankita Jodhani 10/15/2024

Integration File signal 1: autoint1.e
Integration File signal 2: autoint2.e
Quant Time: Oct 15 01:41:40 2024
Quant Method : Z:\pestpcbsrv\HPCHEM1\ECD_D\Method\PD100924CLP.M
Quant Title : GC Extractables
QLast Update : Wed Oct 09 17:21:49 2024
Response via : Initial Calibration
Integrator: ChemStation

Volume Inj. : 1 µl
Signal #1 Phase : ZB-MR1 Signal #2 Phase: ZB-MR2
Signal #1 Info : 30M x 0.32mm x 0.5 Signal #2 Info : 30M x 0.32mm x 0.25µm



(12) 4,4'-DDE (B)
6.071min 3.188 ng/ml m
response 6079276

(12) 4,4'-DDE #2 (B)
5.359min 3.279 ng/ml m
response 24649272

Data Path : Z:\pestpcbsrv\HPCHEM1\ECD_D\Data\PD101424\
 Data File : PD086002.D
 Signal(s) : Signal #1: ECD1A.ch Signal #2: ECD2B.ch
 Acq On : 14 Oct 2024 13:57
 Operator : AR\AJ
 Sample : P4350-05
 Misc :
 ALS Vial : 9 Sample Multiplier: 1

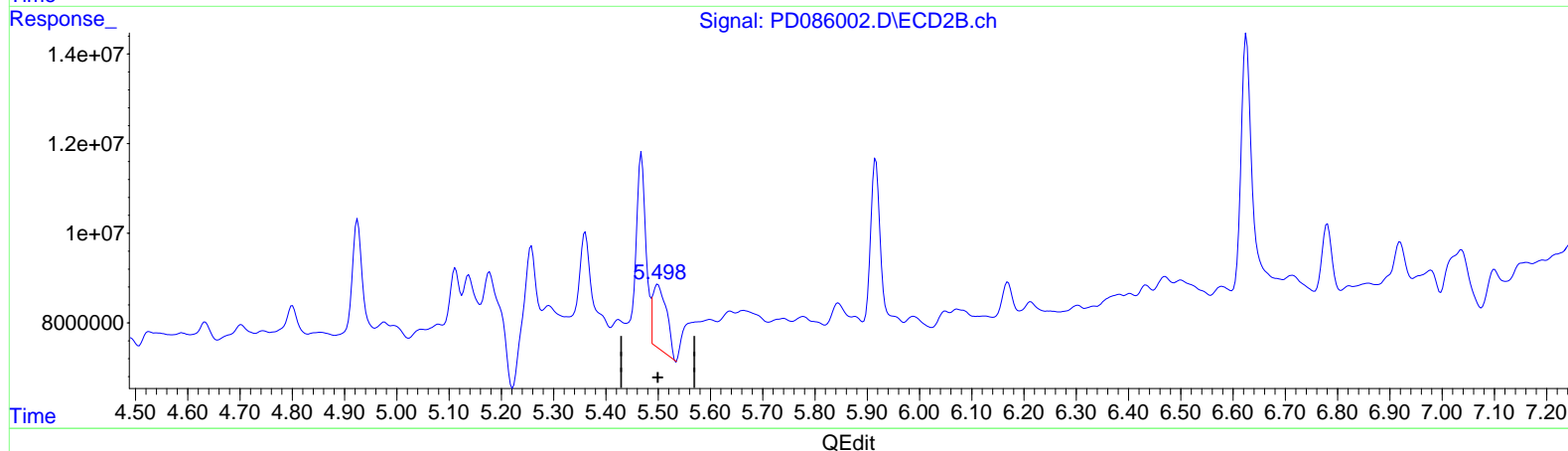
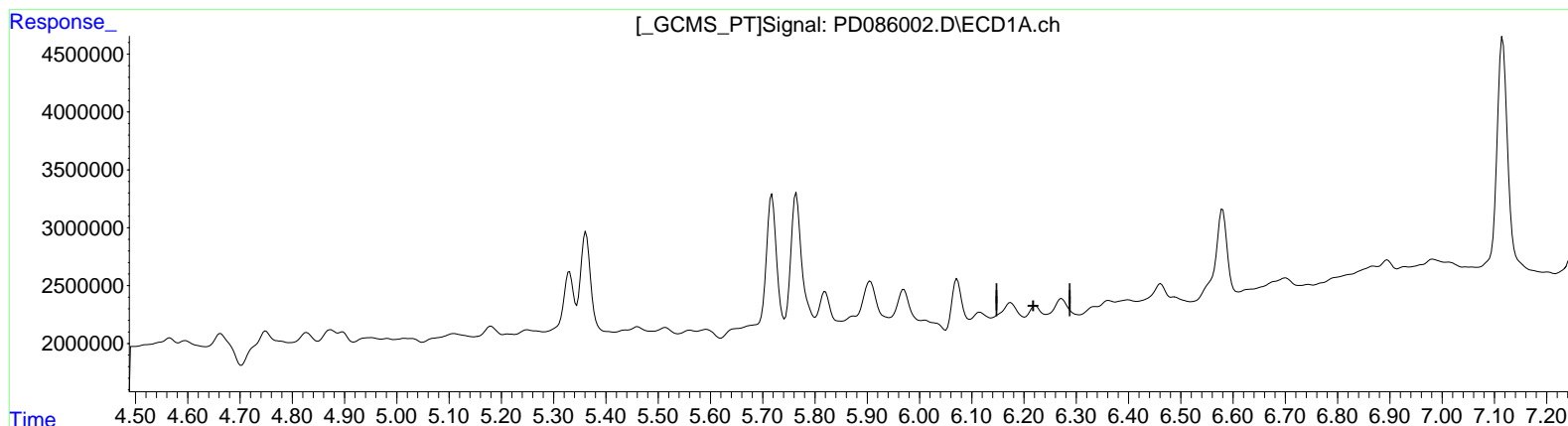
Instrument :
 ECD_D
 ClientSampleId :
 EOAK7

Manual Integrations APPROVED

Reviewed By : Abdul Mirza 10/15/2024
 Supervised By : Ankita Jodhani 10/15/2024

Integration File signal 1: autoint1.e
 Integration File signal 2: autoint2.e
 Quant Time: Oct 15 01:41:40 2024
 Quant Method : Z:\pestpcbsrv\HPCHEM1\ECD_D\Method\PD100924CLP.M
 Quant Title : GC Extractables
 QLast Update : Wed Oct 09 17:21:49 2024
 Response via : Initial Calibration
 Integrator: ChemStation

Volume Inj. : 1 µl
 Signal #1 Phase : ZB-MR1 Signal #2 Phase: ZB-MR2
 Signal #1 Info : 30M x 0.32mm x 0.5 Signal #2 Info : 30M x 0.32mm x 0.25µm



(13) Dieldrin (MA)
 6.222min -0.378 ng/ml
 response -744684

(13) Dieldrin #2 (MA)
 5.500min 3.582 ng/ml
 response 26515528

Data Path : Z:\pestpcbsrv\HPCHEM1\ECD_D\Data\PD101424\
 Data File : PD086002.D
 Signal(s) : Signal #1: ECD1A.ch Signal #2: ECD2B.ch
 Acq On : 14 Oct 2024 13:57
 Operator : AR\AJ
 Sample : P4350-05
 Misc :
 ALS Vial : 9 Sample Multiplier: 1

Instrument :

ECD_D

ClientSampleId :

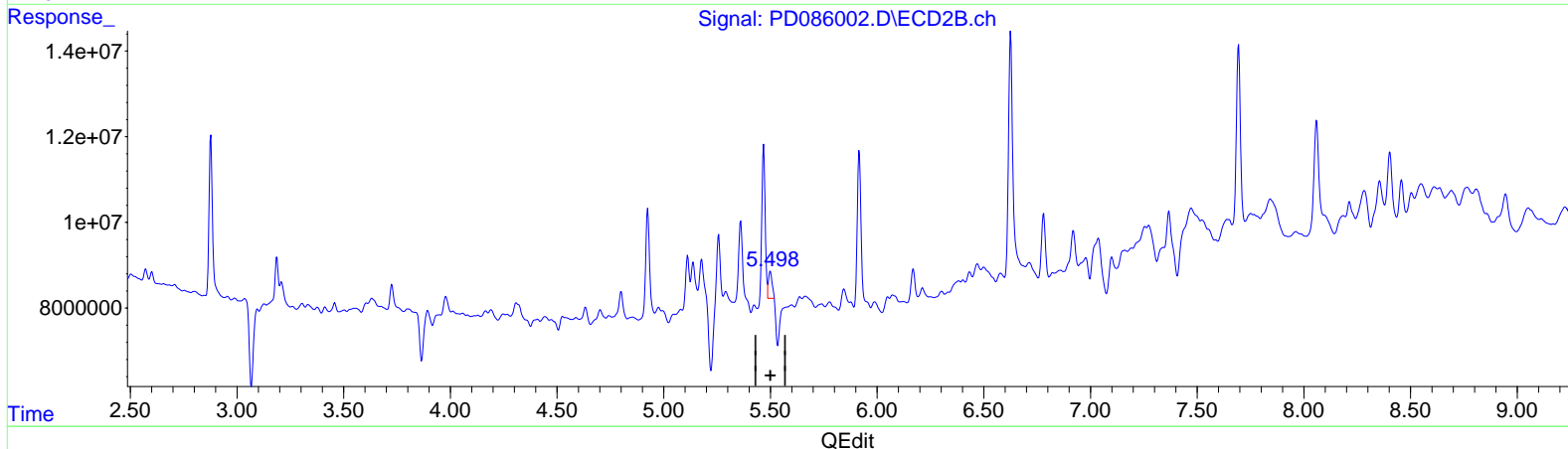
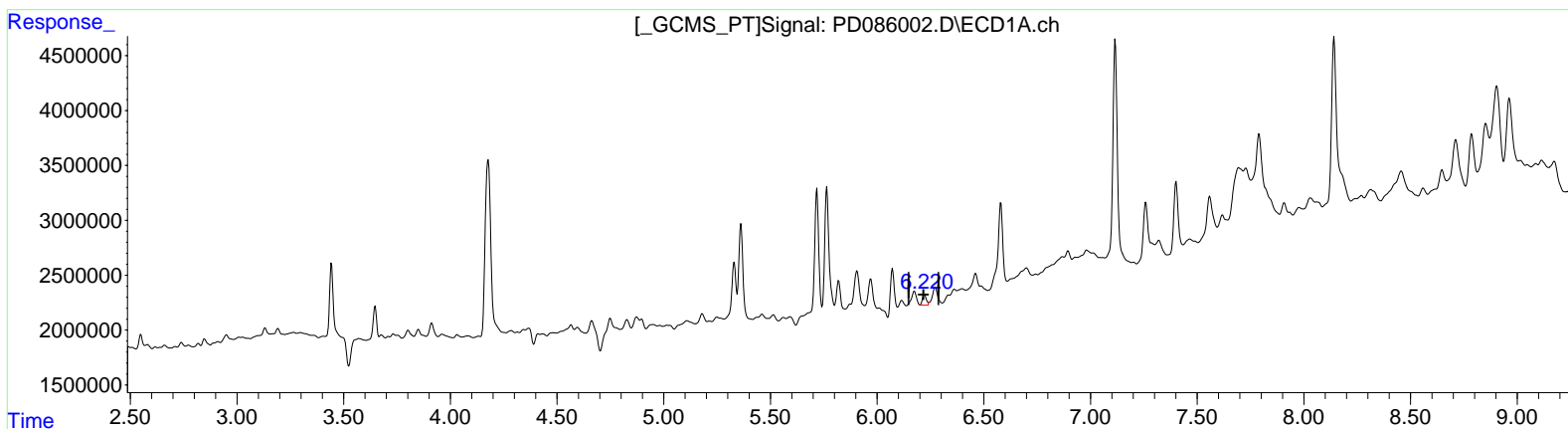
EOAK7

Manual IntegrationsAPPROVED

Reviewed By :Abdul Mirza 10/15/2024
 Supervised By :Ankita Jodhani 10/15/2024

Integration File signal 1: autoint1.e
 Integration File signal 2: autoint2.e
 Quant Time: Oct 15 01:41:40 2024
 Quant Method : Z:\pestpcbsrv\HPCHEM1\ECD_D\Method\PD100924CLP.M
 Quant Title : GC Extractables
 QLast Update : Wed Oct 09 17:21:49 2024
 Response via : Initial Calibration
 Integrator: ChemStation

Volume Inj. : 1 µl
 Signal #1 Phase : ZB-MR1 Signal #2 Phase: ZB-MR2
 Signal #1 Info : 30M x 0.32mm x0.5 Signal #2 Info : 30M x 0.32mm x 0.25µm



(13) Dieldrin (MA)
 6.220min 0.630 ng/ml m
 response 1240428

(13) Dieldrin #2 (MA)
 5.498min 1.016 ng/ml m
 response 7518875

Data Path : Z:\pestpcbsrv\HPCHEM1\ECD_D\Data\PD101424\
 Data File : PD086002.D
 Signal(s) : Signal #1: ECD1A.ch Signal #2: ECD2B.ch
 Acq On : 14 Oct 2024 13:57
 Operator : AR\AJ
 Sample : P4350-05
 Misc :
 ALS Vial : 9 Sample Multiplier: 1

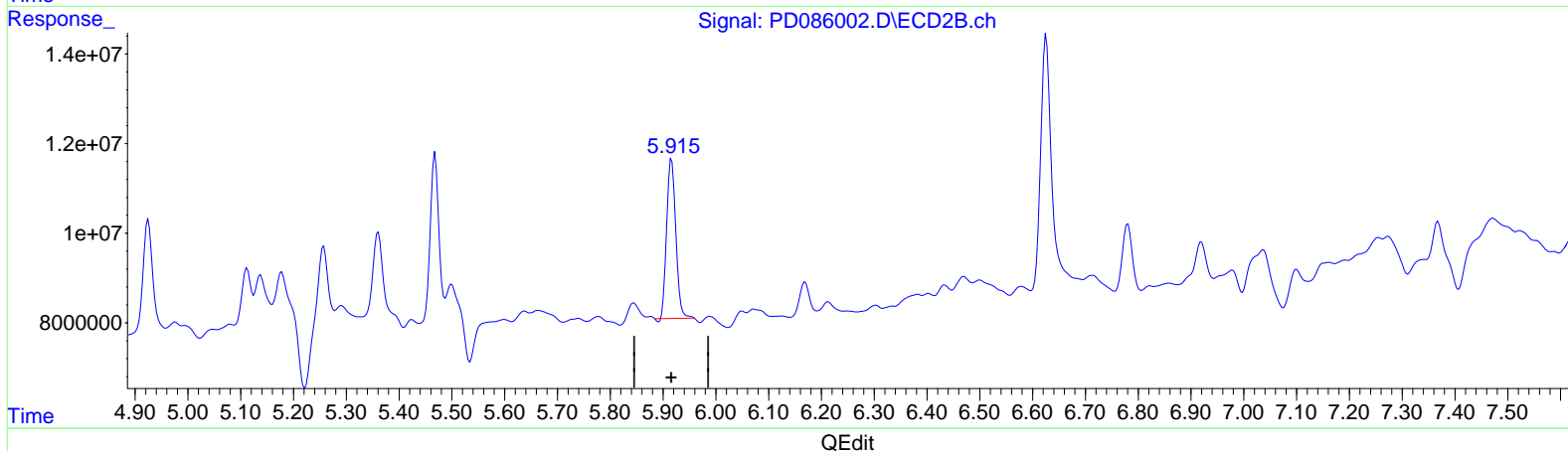
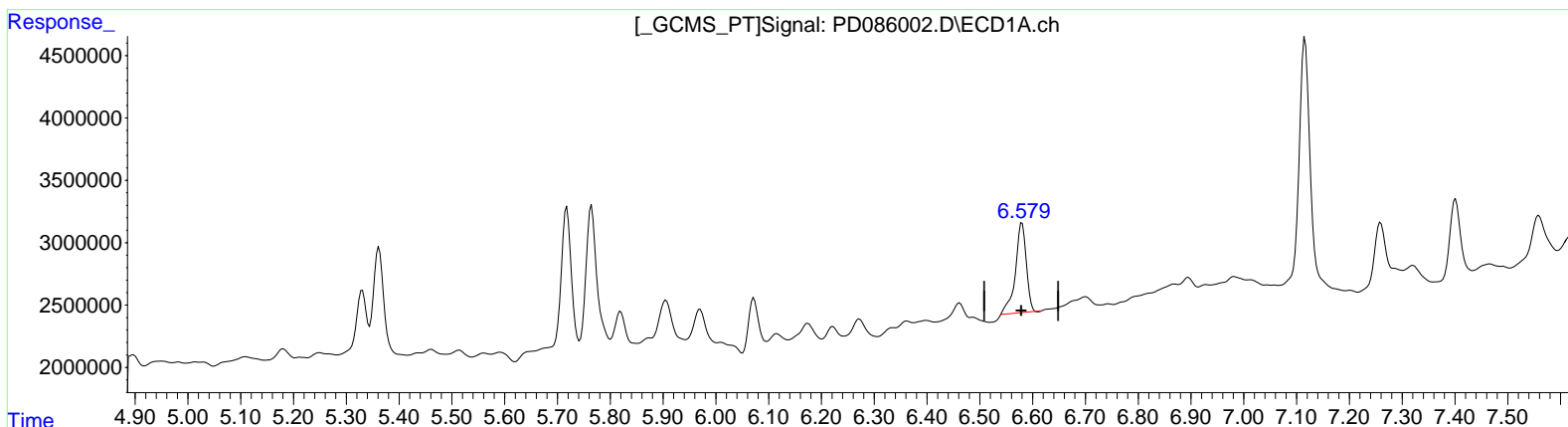
Instrument :
 ECD_D
 ClientSampleId :
 EOAK7

Manual Integrations APPROVED

Reviewed By : Abdul Mirza 10/15/2024
 Supervised By : Ankita Jodhani 10/15/2024

Integration File signal 1: autoint1.e
 Integration File signal 2: autoint2.e
 Quant Time: Oct 15 01:41:40 2024
 Quant Method : Z:\pestpcbsrv\HPCHEM1\ECD_D\Method\PD100924CLP.M
 Quant Title : GC Extractables
 QLast Update : Wed Oct 09 17:21:49 2024
 Response via : Initial Calibration
 Integrator: ChemStation

Volume Inj. : 1 µl
 Signal #1 Phase : ZB-MR1 Signal #2 Phase: ZB-MR2
 Signal #1 Info : 30M x 0.32mm x 0.5 Signal #2 Info : 30M x 0.32mm x 0.25µm



(16) 4,4'-DDD (A)
 6.580min 8.319 ng/ml
 response 10377336

(16) 4,4'-DDD #2 (A)
 5.916min 8.926 ng/ml
 response 42586137

Data Path : Z:\pestpcbsrv\HPCHEM1\ECD_D\Data\PD101424\
 Data File : PD086002.D
 Signal(s) : Signal #1: ECD1A.ch Signal #2: ECD2B.ch
 Acq On : 14 Oct 2024 13:57
 Operator : AR\AJ
 Sample : P4350-05
 Misc :
 ALS Vial : 9 Sample Multiplier: 1

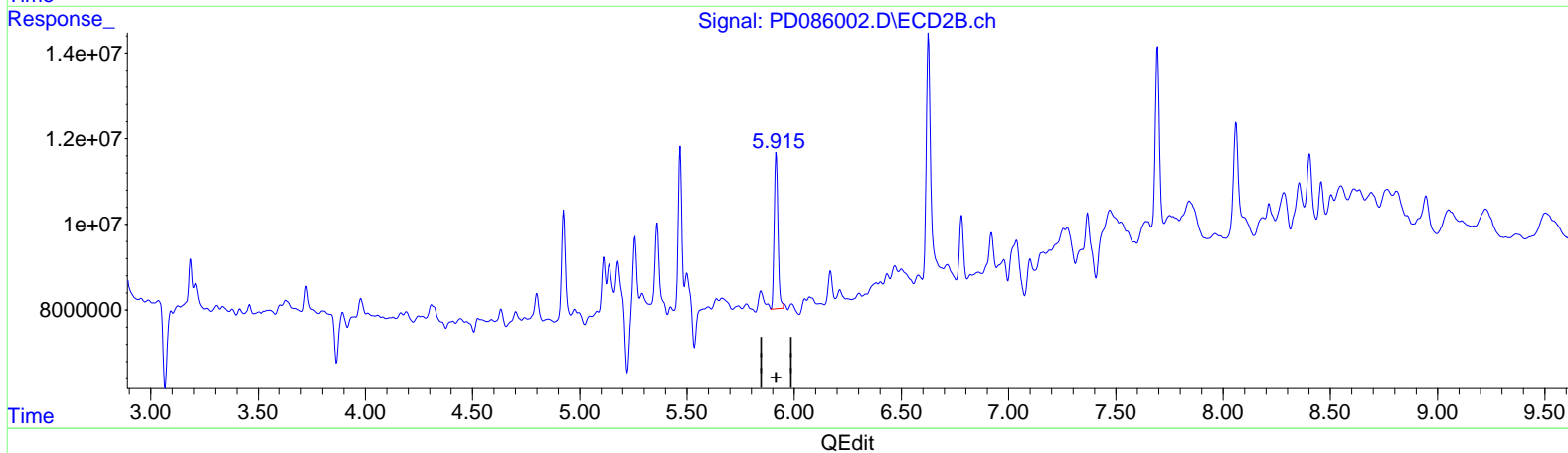
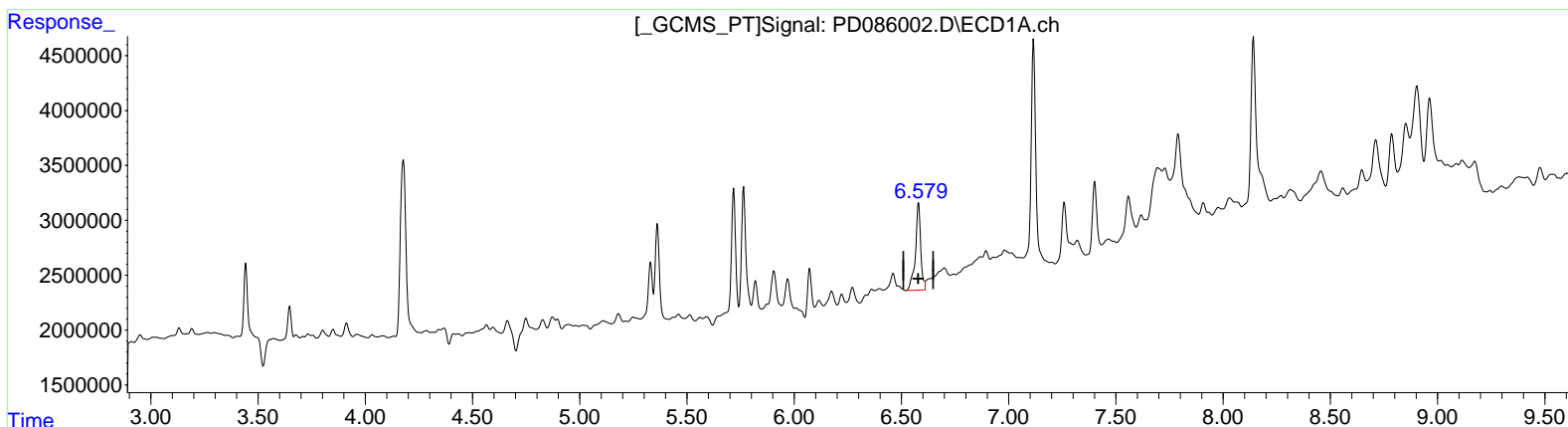
Instrument :
 ECD_D
 ClientSampleId :
 EOAK7

Manual Integrations APPROVED

Reviewed By : Abdul Mirza 10/15/2024
 Supervised By : Ankita Jodhani 10/15/2024

Integration File signal 1: autoint1.e
 Integration File signal 2: autoint2.e
 Quant Time: Oct 15 01:41:40 2024
 Quant Method : Z:\pestpcbsrv\HPCHEM1\ECD_D\Method\PD100924CLP.M
 Quant Title : GC Extractables
 QLast Update : Wed Oct 09 17:21:49 2024
 Response via : Initial Calibration
 Integrator: ChemStation

Volume Inj. : 1 µl
 Signal #1 Phase : ZB-MR1 Signal #2 Phase: ZB-MR2
 Signal #1 Info : 30M x 0.32mm x 0.5 Signal #2 Info : 30M x 0.32mm x 0.25µm



(16) 4,4'-DDD (A)
 6.579min 10.862 ng/ml m
 response 13549822

(16) 4,4'-DDD #2 (A)
 5.915min 9.391 ng/ml m
 response 44805838

Data Path : Z:\pestpcbsrv\HPCHEM1\ECD_D\Data\PD101424\
 Data File : PD086002.D
 Signal(s) : Signal #1: ECD1A.ch Signal #2: ECD2B.ch
 Acq On : 14 Oct 2024 13:57
 Operator : AR\AJ
 Sample : P4350-05
 Misc :
 ALS Vial : 9 Sample Multiplier: 1

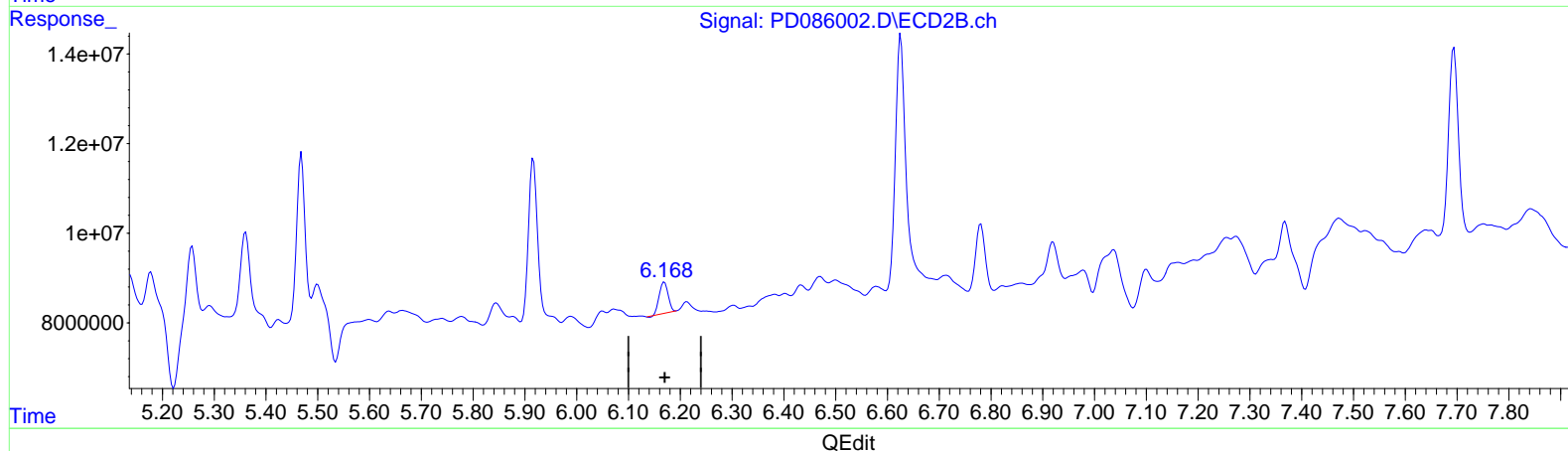
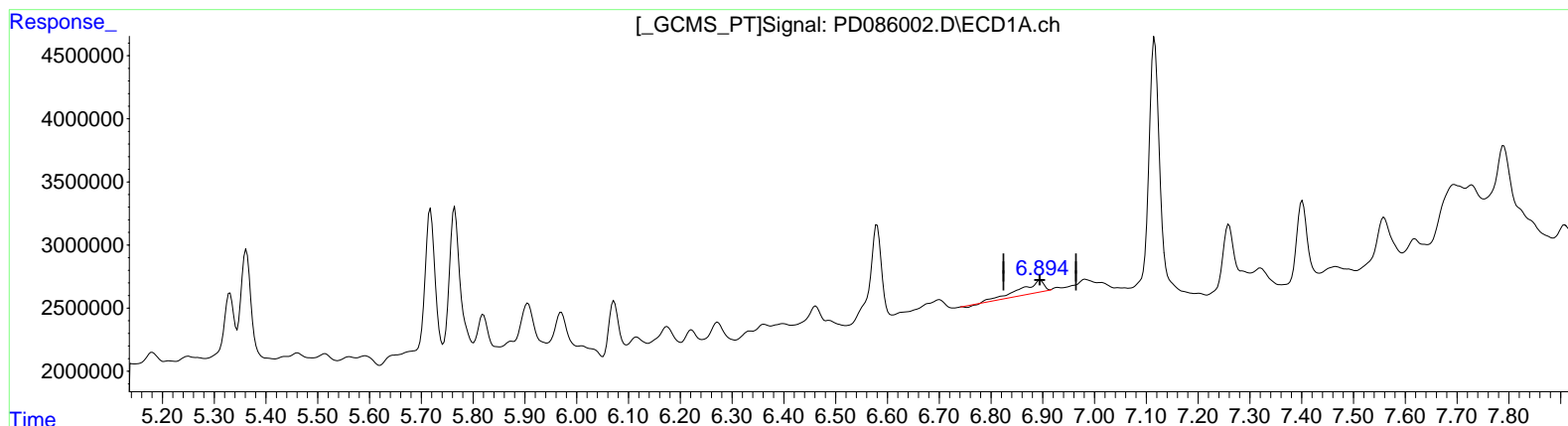
Instrument :
 ECD_D
 ClientSampleId :
 EOAK7

Manual Integrations APPROVED

Reviewed By : Abdul Mirza 10/15/2024
 Supervised By : Ankita Jodhani 10/15/2024

Integration File signal 1: autoint1.e
 Integration File signal 2: autoint2.e
 Quant Time: Oct 15 01:41:40 2024
 Quant Method : Z:\pestpcbsrv\HPCHEM1\ECD_D\Method\PD100924CLP.M
 Quant Title : GC Extractables
 QLast Update : Wed Oct 09 17:21:49 2024
 Response via : Initial Calibration
 Integrator: ChemStation

Volume Inj. : 1 µl
 Signal #1 Phase : ZB-MR1 Signal #2 Phase: ZB-MR2
 Signal #1 Info : 30M x 0.32mm x 0.5 Signal #2 Info : 30M x 0.32mm x 0.25µm



(17) 4,4'-DDT (MA)
 6.895min 2.177 ng/ml
 response 2938102

(17) 4,4'-DDT #2 (MA)
 6.169min 1.650 ng/ml
 response 8217799

Data Path : Z:\pestpcbsrv\HPCHEM1\ECD_D\Data\PD101424\
Data File : PD086002.D
Signal(s) : Signal #1: ECD1A.ch Signal #2: ECD2B.ch
Acq On : 14 Oct 2024 13:57
Operator : AR\AJ
Sample : P4350-05
Misc :
ALS Vial : 9 Sample Multiplier: 1

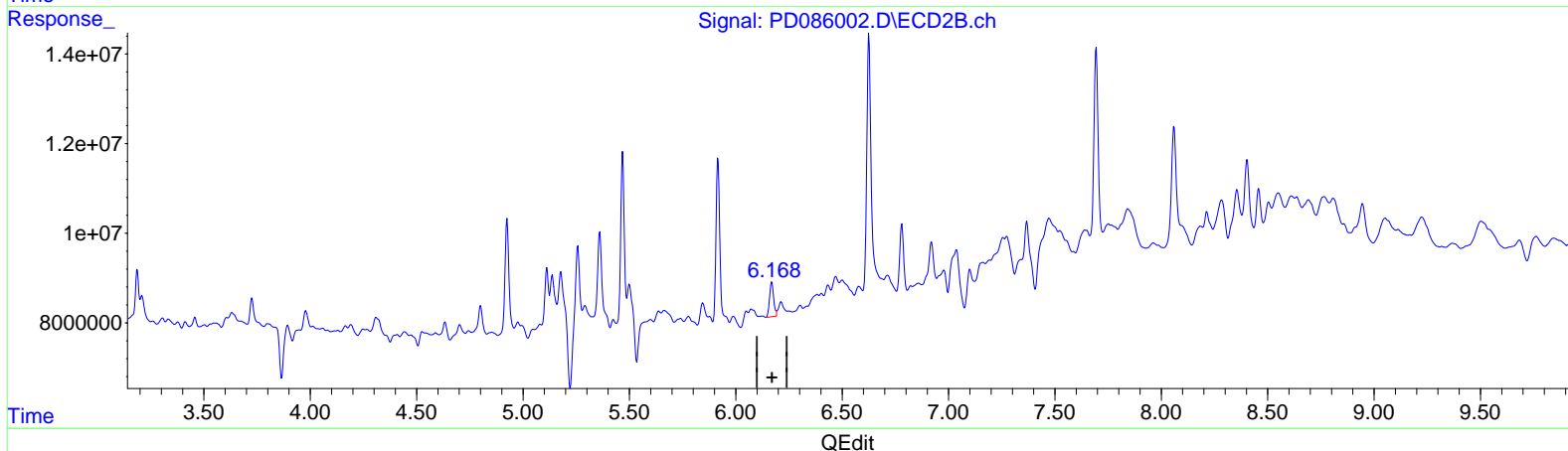
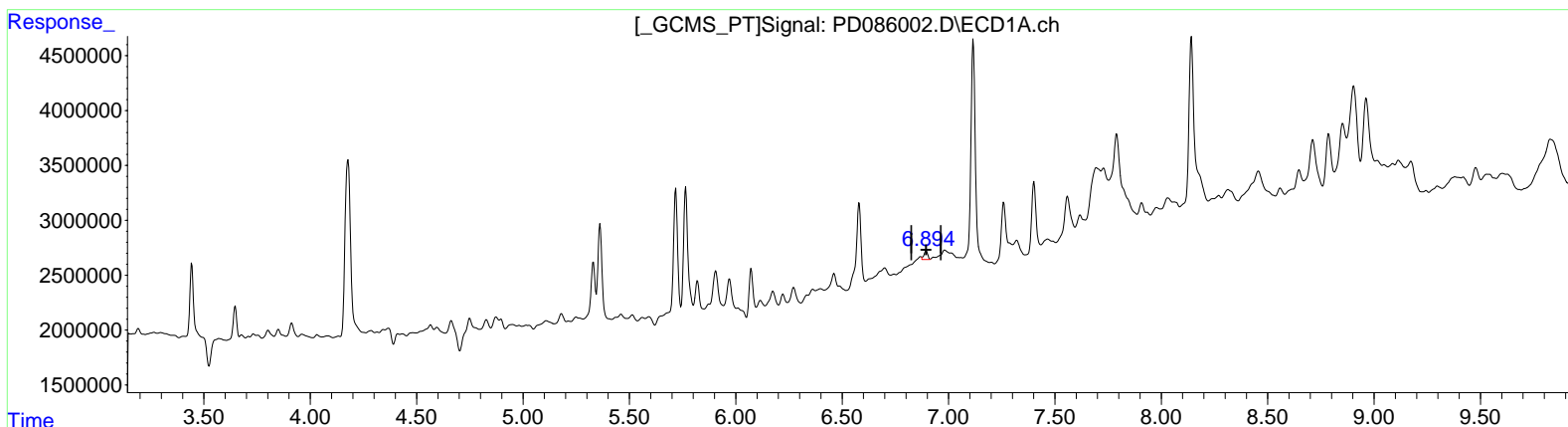
Instrument :
ECD_D
ClientSampleId :
EOAK7

Manual IntegrationsAPPROVED

Reviewed By :Abdul Mirza 10/15/2024
Supervised By :Ankita Jodhani 10/15/2024

Integration File signal 1: autoint1.e
Integration File signal 2: autoint2.e
Quant Time: Oct 15 01:41:40 2024
Quant Method : Z:\pestpcbsrv\HPCHEM1\ECD_D\Method\PD100924CLP.M
Quant Title : GC Extractables
QLast Update : Wed Oct 09 17:21:49 2024
Response via : Initial Calibration
Integrator: ChemStation

Volume Inj. : 1 µl
Signal #1 Phase : ZB-MR1 Signal #2 Phase: ZB-MR2
Signal #1 Info : 30M x 0.32mm x0.5 Signal #2 Info : 30M x 0.32mm x 0.25µm



(17) 4,4'-DDT (MA)
6.894min 0.714 ng/ml m
response 962985

(17) 4,4'-DDT #2 (MA)
6.168min 2.119 ng/ml m
response 10551395

Data Path : Z:\pestpcbsrv\HPCHEM1\ECD_D\Data\PD101424\
 Data File : PD086002.D
 Signal(s) : Signal #1: ECD1A.ch Signal #2: ECD2B.ch
 Acq On : 14 Oct 2024 13:57
 Operator : AR\AJ
 Sample : P4350-05
 Misc :
 ALS Vial : 9 Sample Multiplier: 1

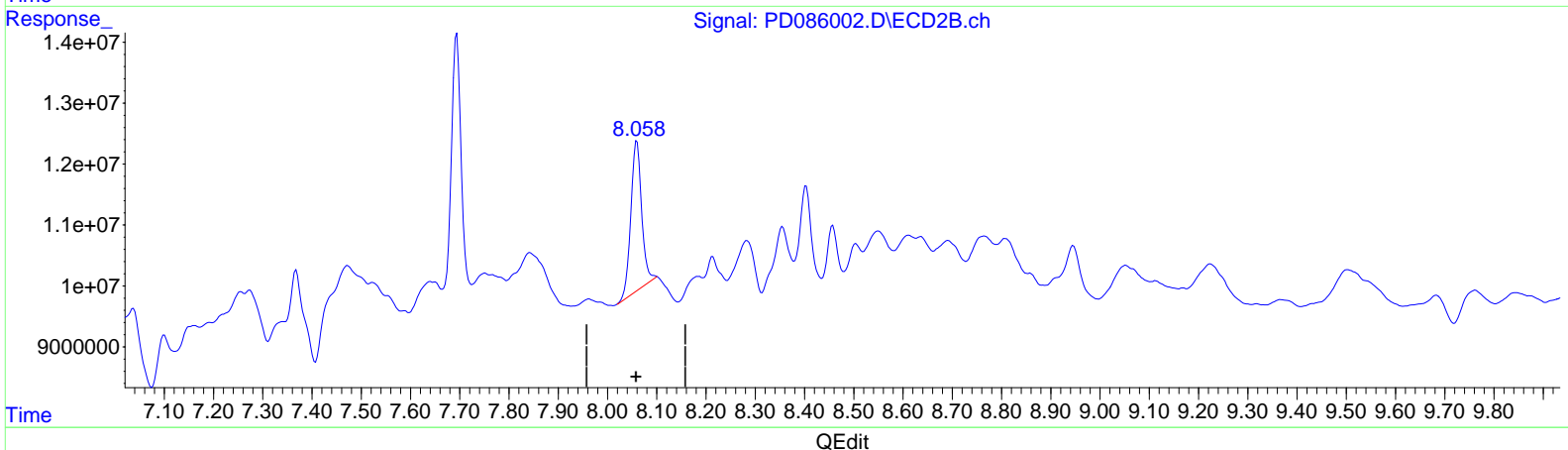
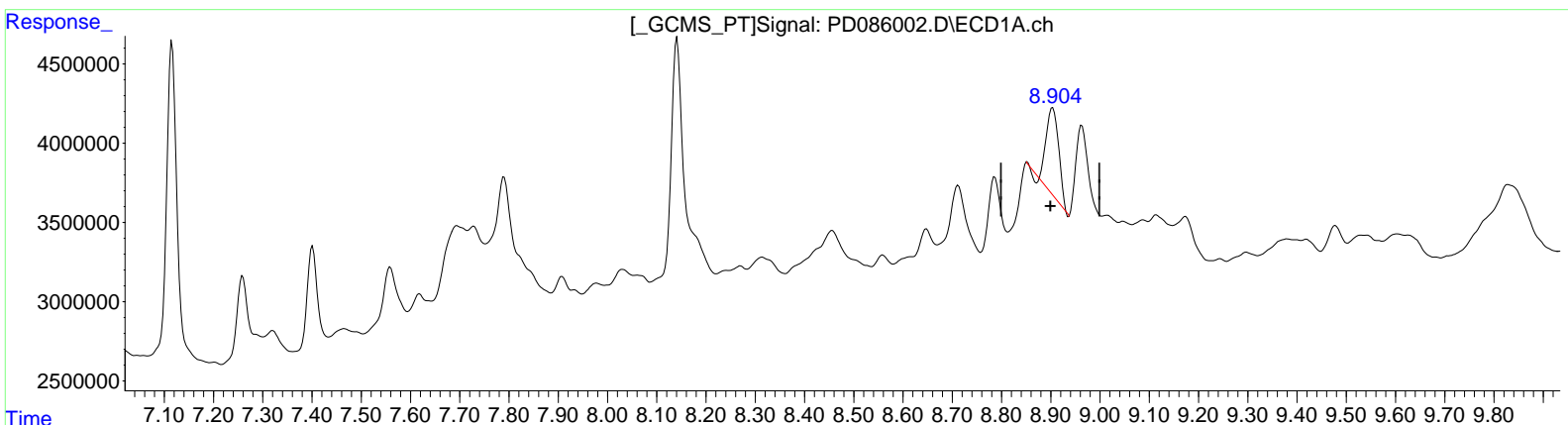
Instrument :
 ECD_D
ClientSampleId :
 EOAK7

Manual IntegrationsAPPROVED

Reviewed By :Abdul Mirza 10/15/2024
 Supervised By :Ankita Jodhani 10/15/2024

Integration File signal 1: autoint1.e
 Integration File signal 2: autoint2.e
 Quant Time: Oct 15 01:41:40 2024
 Quant Method : Z:\pestpcbsrv\HPCHEM1\ECD_D\Method\PD100924CLP.M
 Quant Title : GC Extractables
 QLast Update : Wed Oct 09 17:21:49 2024
 Response via : Initial Calibration
 Integrator: ChemStation

Volume Inj. : 1 µl
 Signal #1 Phase : ZB-MR1 Signal #2 Phase: ZB-MR2
 Signal #1 Info : 30M x 0.32mm x0.5 Signal #2 Info : 30M x 0.32mm x 0.25µm



(27) Decachlorobiphenyl (SA)
 8.904min 4.943 ng/ml
 response 9533123

(27) Decachlorobiphenyl #2 (SA)
 8.060min 7.832 ng/ml
 response 38089364

Data Path : Z:\pestpcbsrv\HPCHEM1\ECD_D\Data\PD101424\
Data File : PD086002.D
Signal(s) : Signal #1: ECD1A.ch Signal #2: ECD2B.ch
Acq On : 14 Oct 2024 13:57
Operator : AR\AJ
Sample : P4350-05
Misc :
ALS Vial : 9 Sample Multiplier: 1

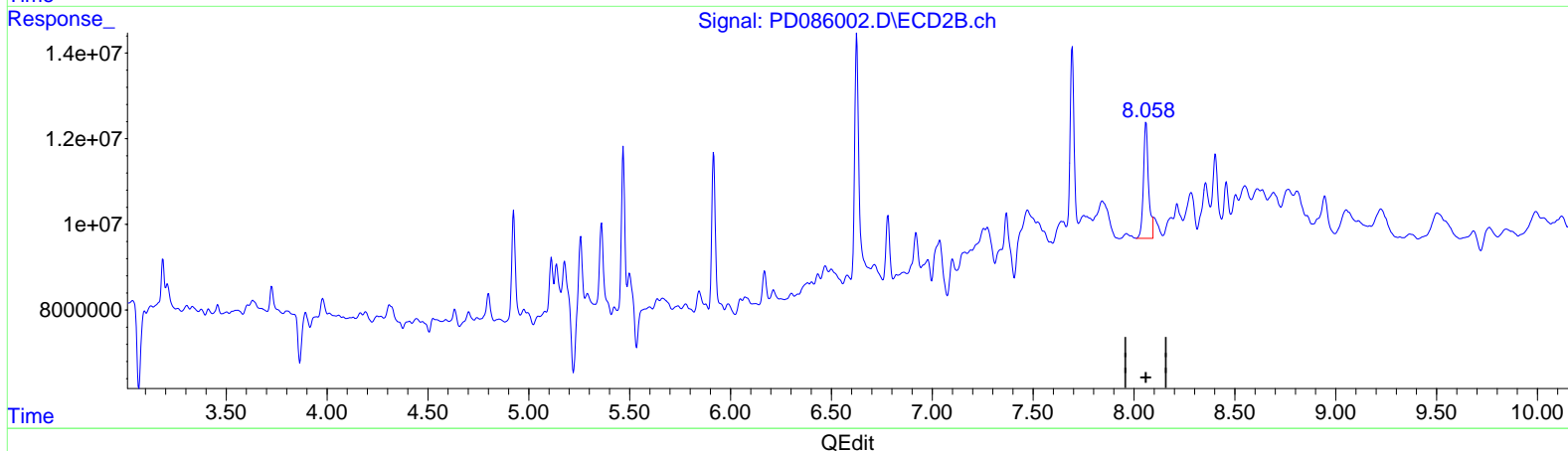
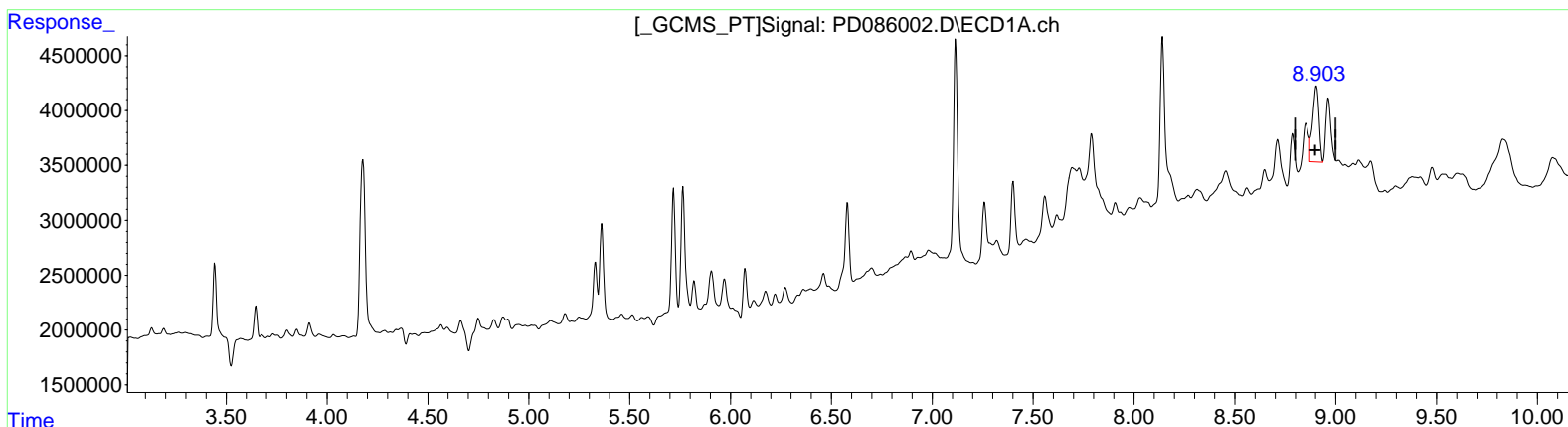
Instrument :
ECD_D
ClientSampleId :
EOAK7

Manual Integrations APPROVED

Reviewed By : Abdul Mirza 10/15/2024
Supervised By : Ankita Jodhani 10/15/2024

Integration File signal 1: autoint1.e
Integration File signal 2: autoint2.e
Quant Time: Oct 15 01:41:40 2024
Quant Method : Z:\pestpcbsrv\HPCHEM1\ECD_D\Method\PD100924CLP.M
Quant Title : GC Extractables
QLast Update : Wed Oct 09 17:21:49 2024
Response via : Initial Calibration
Integrator: ChemStation

Volume Inj. : 1 µl
Signal #1 Phase : ZB-MR1 Signal #2 Phase: ZB-MR2
Signal #1 Info : 30M x 0.32mm x 0.5 Signal #2 Info : 30M x 0.32mm x 0.25µm



(27) Decachlorobiphenyl (SA)
8.903min 7.926 ng/ml m
response 15287204

(27) Decachlorobiphenyl #2 (SA)
8.058min 9.667 ng/ml m
response 47016679