

Data Path : Z:\pestpcbsrv\HPCHEM1\ECD\_D\Data\PD101425\  
 Data File : PD090574.D  
 Signal(s) : Signal #1: ECD1A.ch Signal #2: ECD2B.ch  
 Acq On : 14 Oct 2025 11:38  
 Operator : AR\AJ  
 Sample : PB170065BL  
 Misc :  
 ALS Vial : 5 Sample Multiplier: 1

Instrument :  
 ECD\_D  
 ClientSampleId :

Integration File signal 1: autoint1.e  
 Integration File signal 2: autoint2.e  
 Quant Time: Oct 15 07:36:33 2025  
 Quant Method : Z:\pestpcbsrv\HPCHEM1\ECD\_D\Method\PD091825.M  
 Quant Title : GC Extractables  
 QLast Update : Fri Sep 19 05:52:38 2025  
 Response via : Initial Calibration  
 Integrator: ChemStation

Volume Inj. : 1 µl  
 Signal #1 Phase : ZB-MR2 Signal #2 Phase: ZB-MR2  
 Signal #1 Info : 30M x 0.32mm x0.5 Signal #2 Info : 30M x 0.32mm x 0.25µm

	Compound	RT#1	RT#2	Resp#1	Resp#2	ng/ml	ng/ml
-----							
System Monitoring Compounds							
1)	SA Tetrachlo...	3.551	2.874	55521931	534.8E6	17.081	19.483
28)	SA Decachlor...	9.072	8.063	90632440	618.0E6	18.784	19.066
Target Compounds							
2)	A alpha-BHC	0.000	3.378	0	2332924	N.D.	0.053 #
3)	MA gamma-BHC...	4.346f	3.722	220783	1543630	0.033	0.038
4)	MA Heptachlor	4.916	4.081	114418	1133439	0.017	0.028 #
5)	MB Aldrin	0.000	4.379f	0	84333	N.D.	0.002 #
6)	B beta-BHC	0.000	4.037f	0	541933	N.D.	0.031 #
7)	B delta-BHC	4.781f	4.255	2595931	554308	0.402	0.013 #
8)	B Heptachlo...	0.000	4.889f	0	34831564	N.D.	0.945 #
9)	A Endosulfan I	0.000	5.224f	0	1851893	N.D.	0.054 #
10)	B gamma-Chl...	5.934	5.109	448028	1131521	0.078	0.029 #
11)	B alpha-Chl...	6.001f	5.193	17903098	3241390	3.108	0.086 #
12)	B 4,4'-DDE	0.000	5.368	0	918594	N.D.	0.024 #
13)	MA Dieldrin	0.000	5.499	0	958206	N.D.	0.025 #
14)	MA Endrin	0.000	5.788	0	45110085	N.D.	1.259 #
15)	B Endosulfa...	0.000	6.083	0	2330891	N.D.	0.069 #
16)	A 4,4'-DDD	6.696	5.909	1418107	1967064	0.346	0.061 #
17)	MA 4,4'-DDT	6.988f	6.179	1431146	1532387	0.321	0.045 #
18)	B Endrin al...	6.930f	6.255	1754477	669872	0.511	0.028 #
19)	B Endosulfa...	0.000	6.452f	0	1829399	N.D.	0.056 #
20)	A Methoxychlor	7.485	6.727f	71239	1691979	0.030	0.097 #
21)	B Endrin ke...	7.609f	0.000	51873	0	0.010	N.D. #
22)	Mirex	8.129f	7.169	1245536	5288775	0.336	0.192 #
23)	Chlordane-1	0.000	3.897	0	78159	N.D.	0.065 #
24)	Chlordane-2	0.000	4.487	0	9996140	N.D.	7.994 #
25)	Chlordane-3	5.934	5.109	448028	1131521	0.535	0.299 #
26)	Chlordane-4	6.001f	5.193	17903098	3241390	17.543	0.996 #
27)	Chlordane-5	6.860	6.083	2512742	2330891	14.114	1.536 #

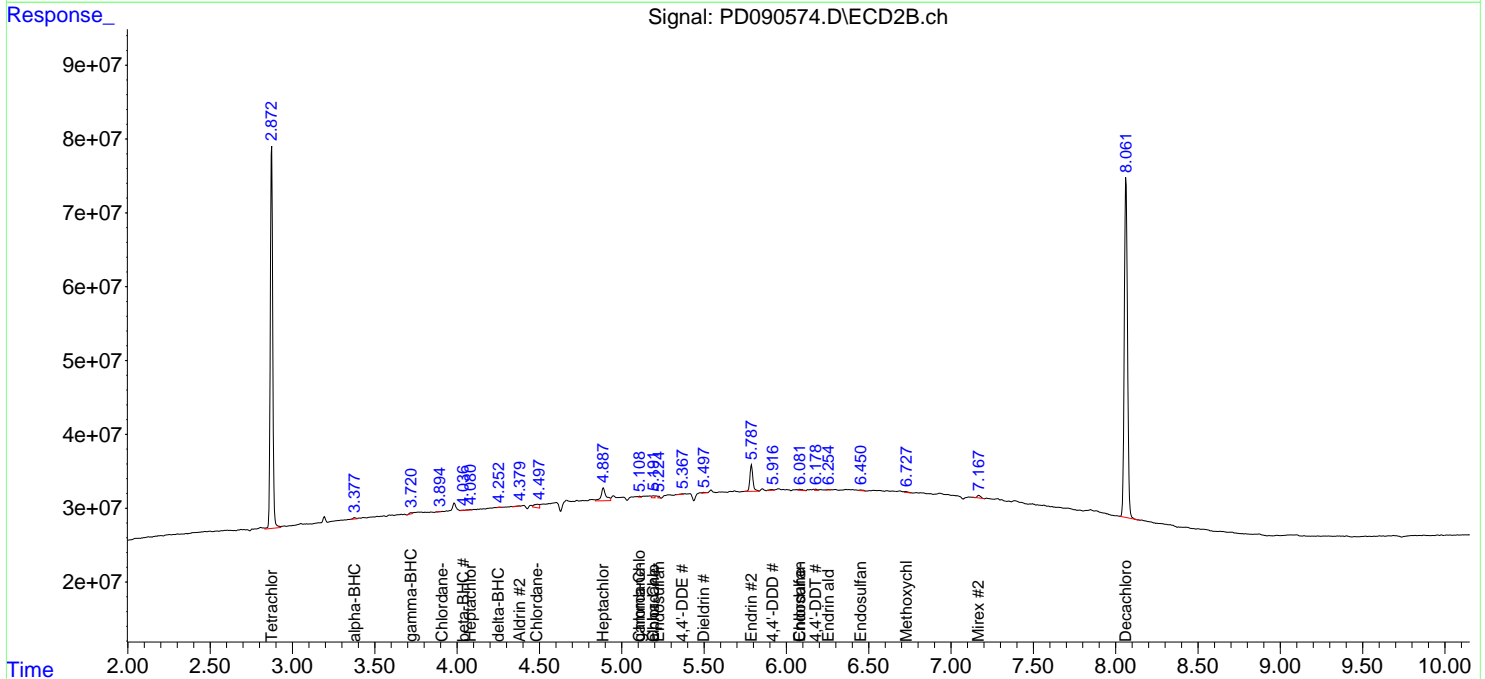
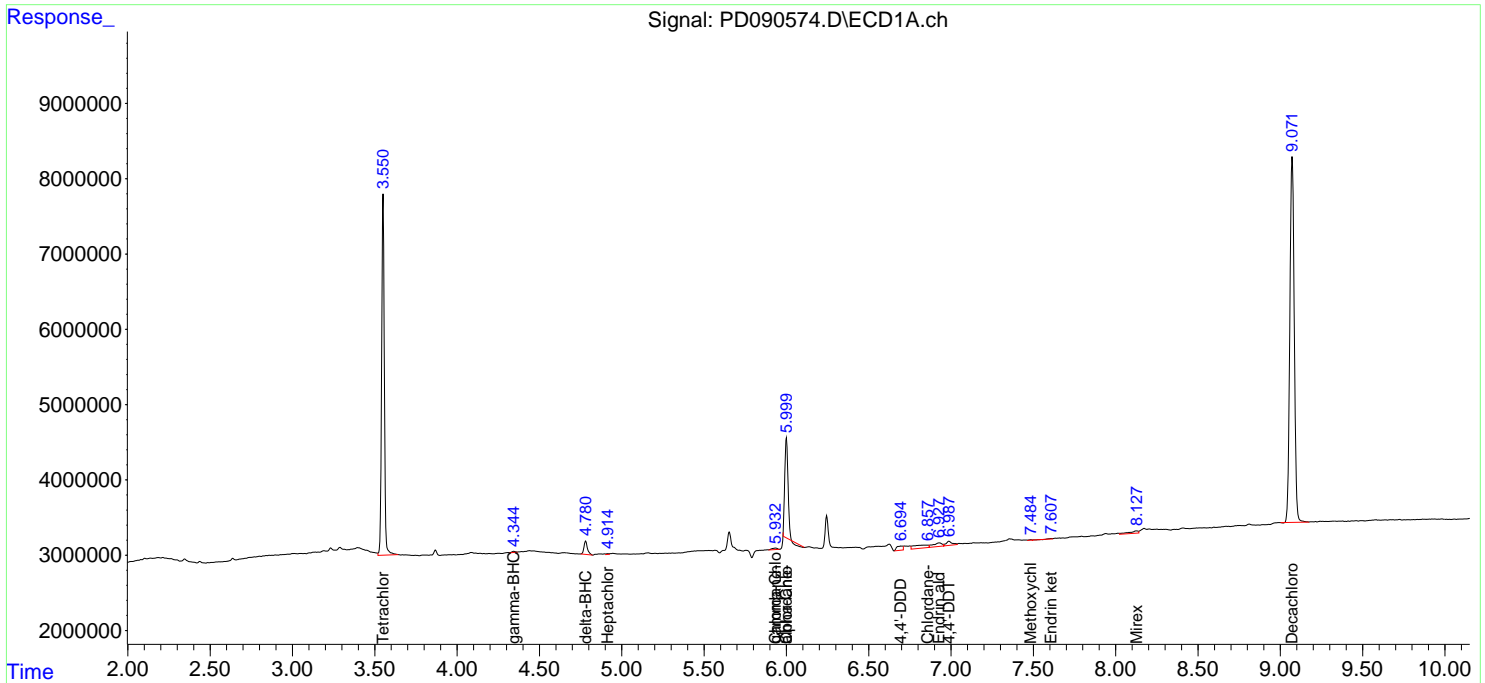
(f)=RT Delta > 1/2 Window (#)=Amounts differ by > 25% (m)=manual int.

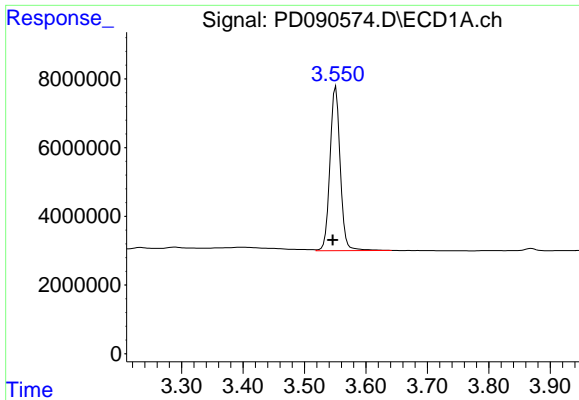
Data Path : Z:\pestpcbsrv\HPCHEM1\ECD\_D\Data\PD101425\  
 Data File : PD090574.D  
 Signal(s) : Signal #1: ECD1A.ch Signal #2: ECD2B.ch  
 Acq On : 14 Oct 2025 11:38  
 Operator : AR\AJ  
 Sample : PB170065BL  
 Misc :  
 ALS Vial : 5 Sample Multiplier: 1

Instrument :  
 ECD\_D  
 ClientSampleId :

Integration File signal 1: autoint1.e  
 Integration File signal 2: autoint2.e  
 Quant Time: Oct 15 07:36:33 2025  
 Quant Method : Z:\pestpcbsrv\HPCHEM1\ECD\_D\Method\PD091825.M  
 Quant Title : GC Extractables  
 QLast Update : Fri Sep 19 05:52:38 2025  
 Response via : Initial Calibration  
 Integrator: ChemStation

Volume Inj. : 1 µl  
 Signal #1 Phase : ZB-MR1 Signal #2 Phase: ZB-MR2  
 Signal #1 Info : 30M x 0.32mm x0.5 Signal #2 Info : 30M x 0.32mm x 0.25µm

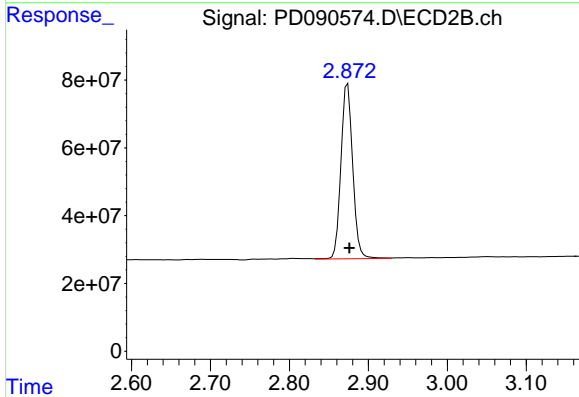




#1 Tetrachloro-m-xylene

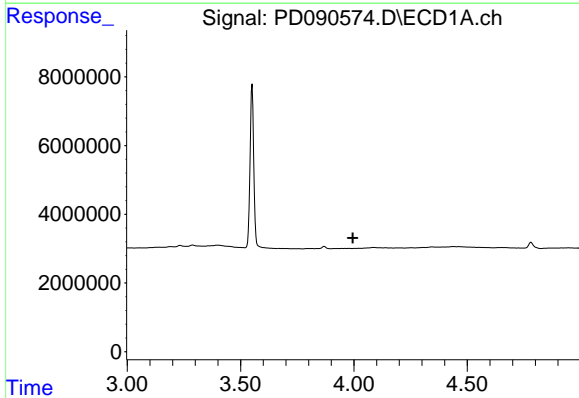
R.T.: 3.551 min  
 Delta R.T.: 0.005 min  
 Response: 55521931  
 Conc: 17.08 ng/ml

Instrument :  
 ECD\_D  
 ClientSampleId :



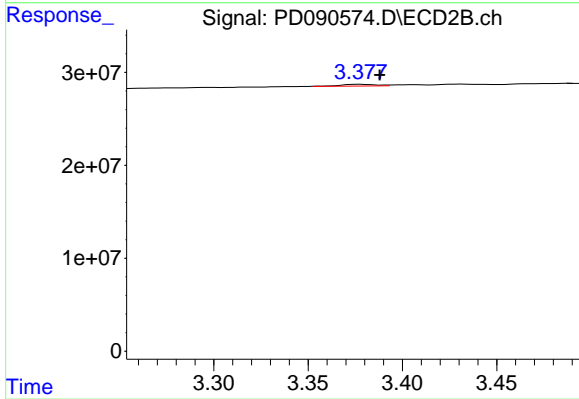
#1 Tetrachloro-m-xylene

R.T.: 2.874 min  
 Delta R.T.: -0.002 min  
 Response: 534813811  
 Conc: 19.48 ng/ml



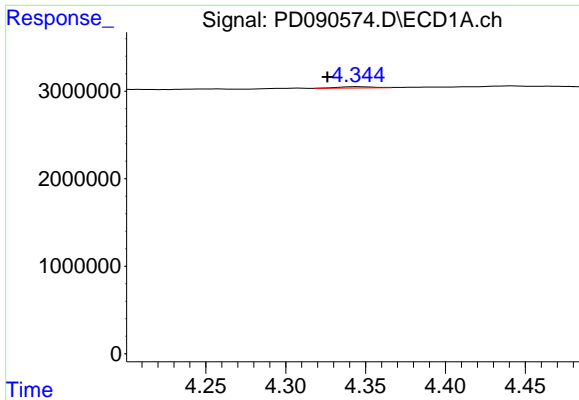
#2 alpha-BHC

R.T.: 0.000 min  
 Exp R.T. : 3.995 min  
 Response: 0  
 Conc: N.D.



#2 alpha-BHC

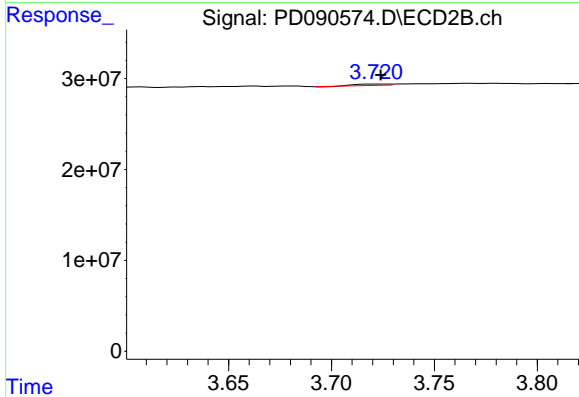
R.T.: 3.378 min  
 Delta R.T.: -0.010 min  
 Response: 2332924  
 Conc: 0.05 ng/ml



#3 gamma-BHC (Lindane)

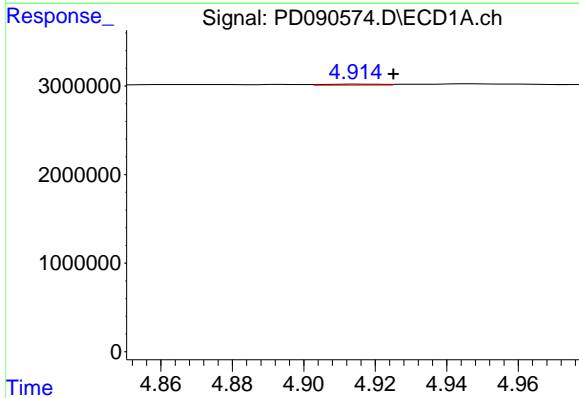
R.T.: 4.346 min  
 Delta R.T.: 0.020 min  
 Response: 220783  
 Conc: 0.03 ng/ml

Instrument :  
 ECD\_D  
 ClientSampleId :



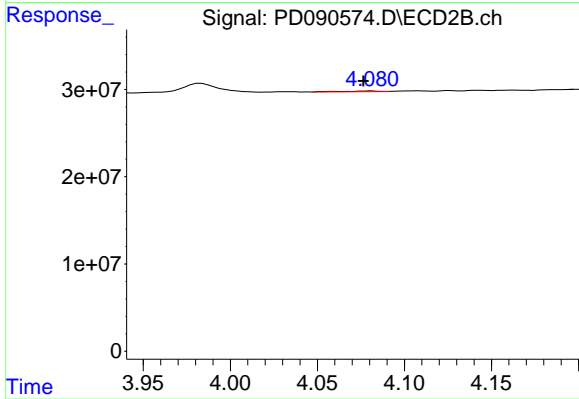
#3 gamma-BHC (Lindane)

R.T.: 3.722 min  
 Delta R.T.: -0.002 min  
 Response: 1543630  
 Conc: 0.04 ng/ml



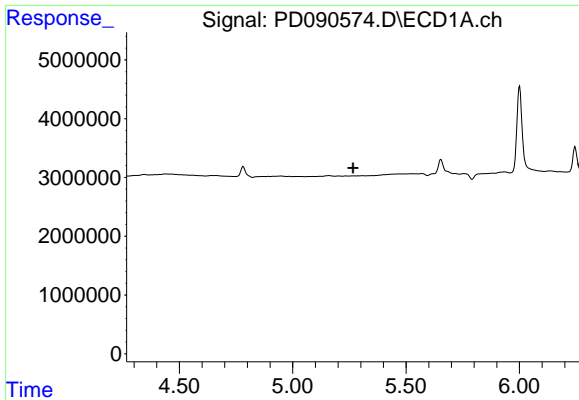
#4 Heptachlor

R.T.: 4.916 min  
 Delta R.T.: -0.009 min  
 Response: 114418  
 Conc: 0.02 ng/ml



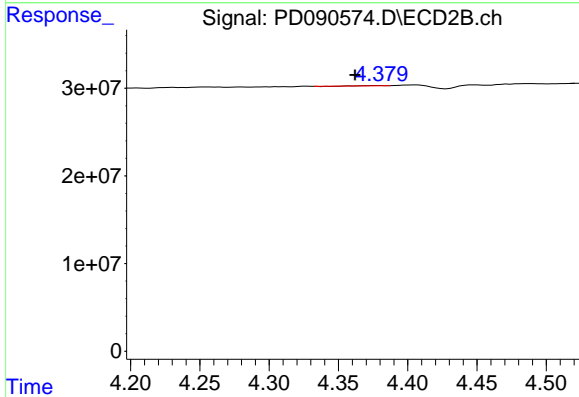
#4 Heptachlor

R.T.: 4.081 min  
 Delta R.T.: 0.005 min  
 Response: 1133439  
 Conc: 0.03 ng/ml

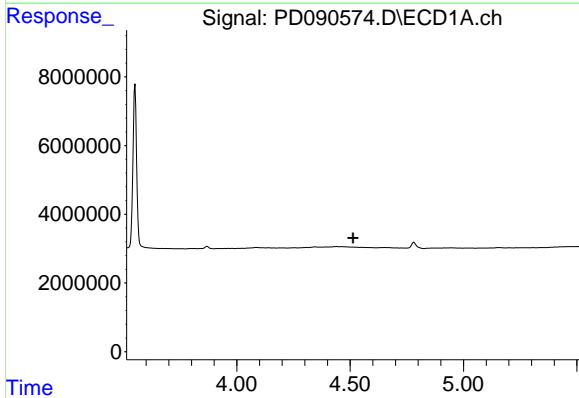


#5 Aldrin  
 R.T.: 0.000 min  
 Exp R.T.: 5.266 min  
 Response: 0  
 Conc: N.D.

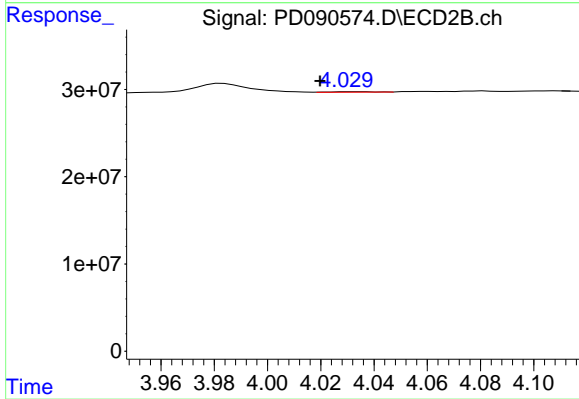
Instrument :  
 ECD\_D  
 ClientSampleId :



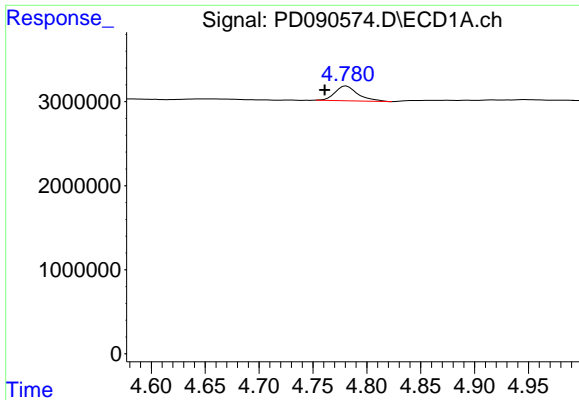
#5 Aldrin  
 R.T.: 4.379 min  
 Delta R.T.: 0.017 min  
 Response: 84333  
 Conc: 0.00 ng/ml



#6 beta-BHC  
 R.T.: 0.000 min  
 Exp R.T.: 4.513 min  
 Response: 0  
 Conc: N.D.



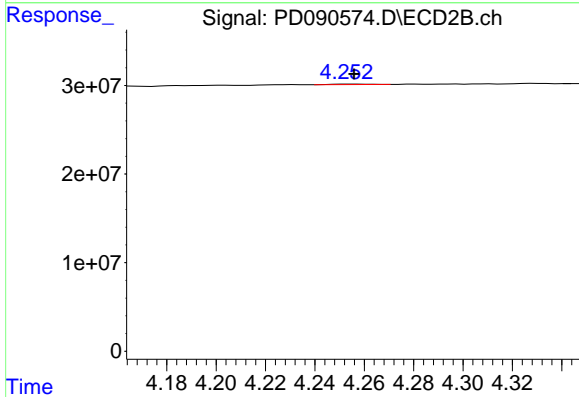
#6 beta-BHC  
 R.T.: 4.037 min  
 Delta R.T.: 0.017 min  
 Response: 541933  
 Conc: 0.03 ng/ml



#7 delta-BHC

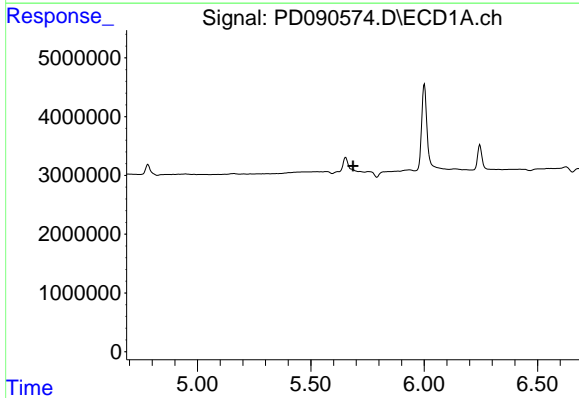
R.T.: 4.781 min  
 Delta R.T.: 0.020 min  
 Response: 2595931  
 Conc: 0.40 ng/ml

Instrument :  
 ECD\_D  
 ClientSampleId :



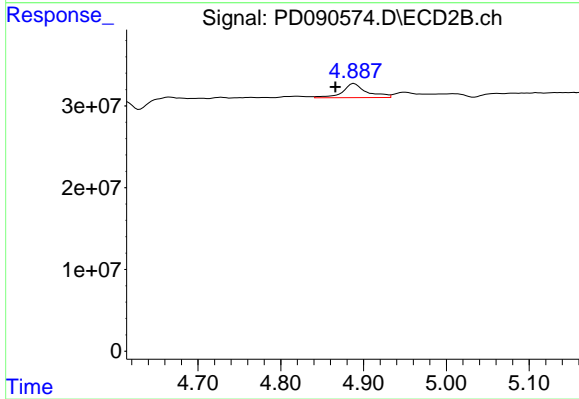
#7 delta-BHC

R.T.: 4.255 min  
 Delta R.T.: -0.001 min  
 Response: 554308  
 Conc: 0.01 ng/ml



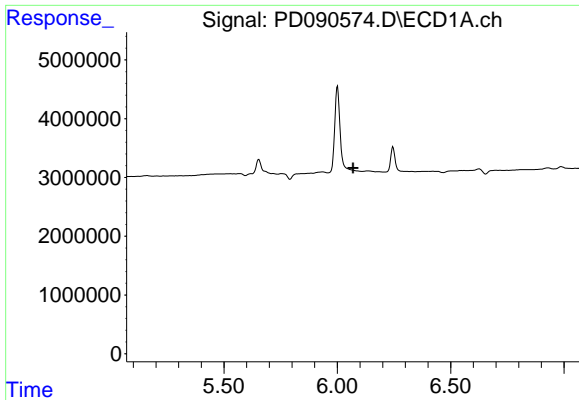
#8 Heptachlor epoxide

R.T.: 0.000 min  
 Exp R.T. : 5.686 min  
 Response: 0  
 Conc: N.D.



#8 Heptachlor epoxide

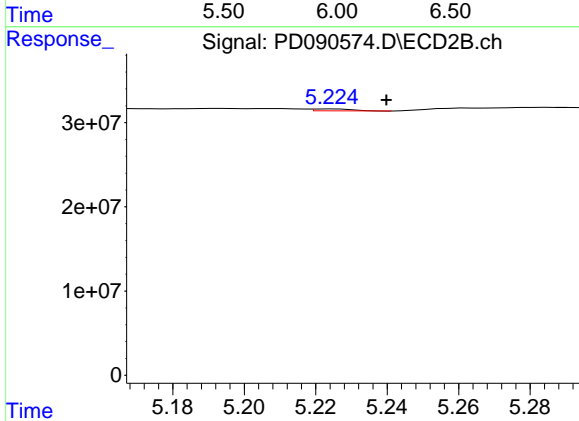
R.T.: 4.889 min  
 Delta R.T.: 0.023 min  
 Response: 34831564  
 Conc: 0.94 ng/ml



#9 Endosulfan I

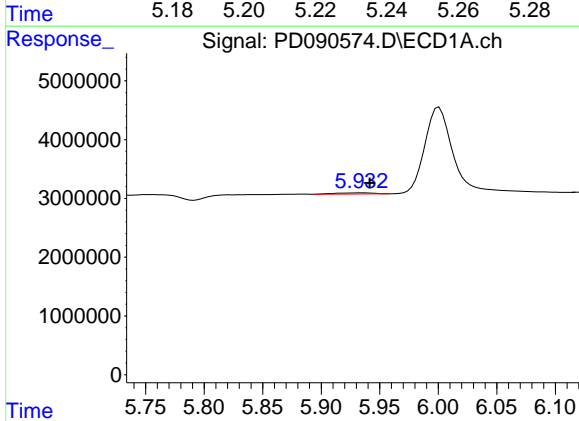
R.T.: 0.000 min  
 Exp R.T.: 6.070 min  
 Response: 0  
 Conc: N.D.

Instrument :  
 ECD\_D  
 ClientSampleId :



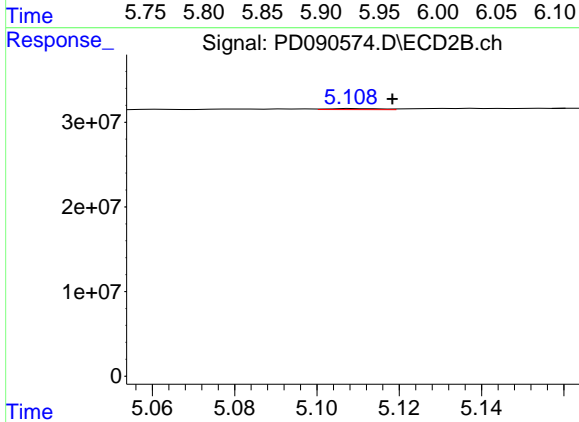
#9 Endosulfan I

R.T.: 5.224 min  
 Delta R.T.: -0.015 min  
 Response: 1851893  
 Conc: 0.05 ng/ml



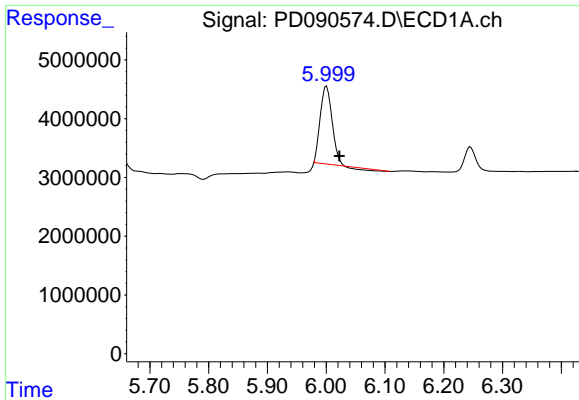
#10 gamma-Chlordane

R.T.: 5.934 min  
 Delta R.T.: -0.008 min  
 Response: 448028  
 Conc: 0.08 ng/ml



#10 gamma-Chlordane

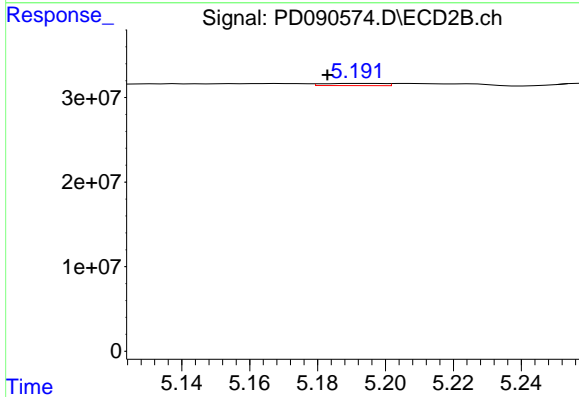
R.T.: 5.109 min  
 Delta R.T.: -0.009 min  
 Response: 1131521  
 Conc: 0.03 ng/ml



#11 alpha-Chlordane

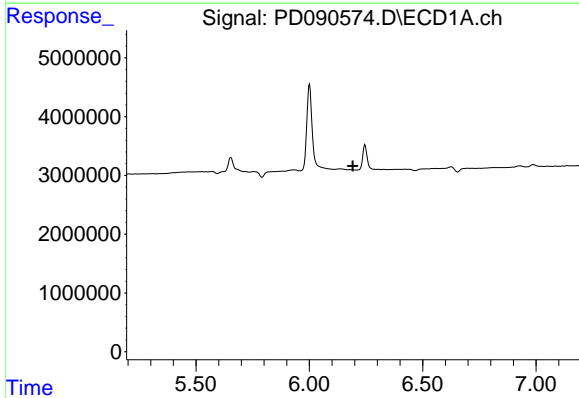
R.T.: 6.001 min  
 Delta R.T.: -0.022 min  
 Response: 17903098  
 Conc: 3.11 ng/ml

Instrument :  
 ECD\_D  
 ClientSampleId :



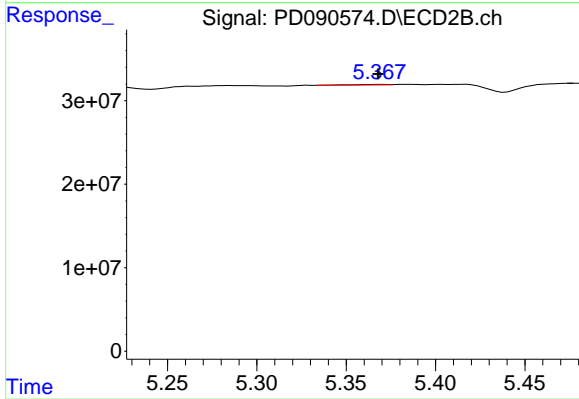
#11 alpha-Chlordane

R.T.: 5.193 min  
 Delta R.T.: 0.010 min  
 Response: 3241390  
 Conc: 0.09 ng/ml



#12 4,4'-DDE

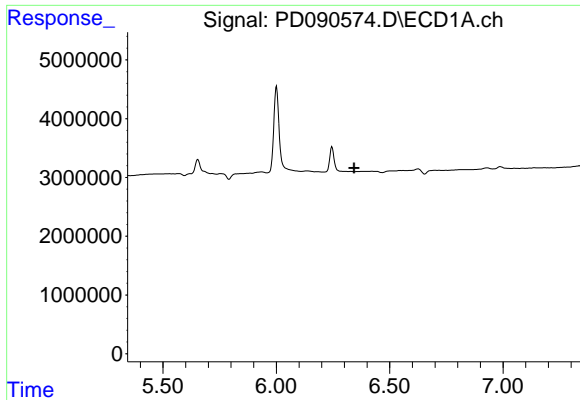
R.T.: 0.000 min  
 Exp R.T. : 6.192 min  
 Response: 0  
 Conc: N.D.



#12 4,4'-DDE

R.T.: 5.368 min  
 Delta R.T.: 0.000 min  
 Response: 918594  
 Conc: 0.02 ng/ml

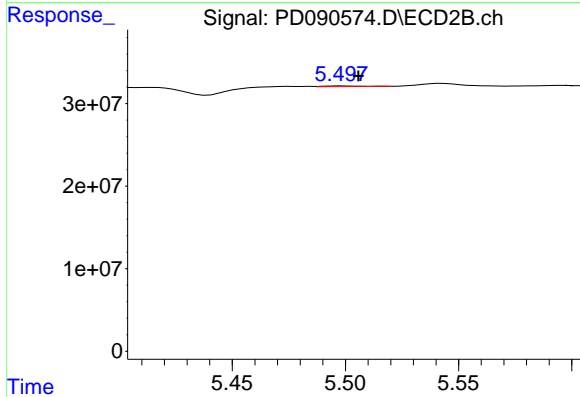




#13 Dieldrin

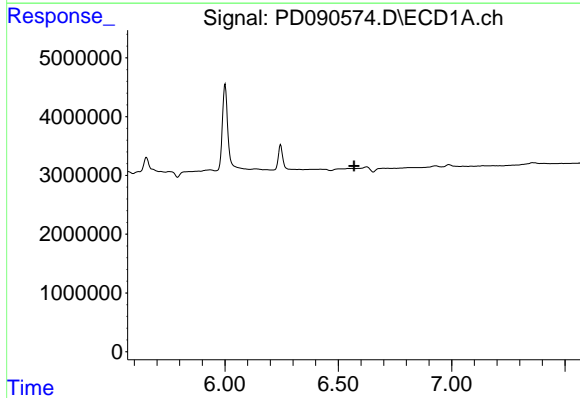
R.T.: 0.000 min  
 Exp R.T.: 6.343 min  
 Response: 0  
 Conc: N.D.

Instrument :  
 ECD\_D  
 ClientSampleId :



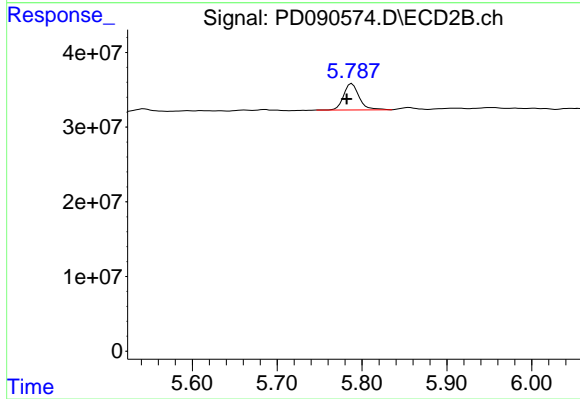
#13 Dieldrin

R.T.: 5.499 min  
 Delta R.T.: -0.007 min  
 Response: 958206  
 Conc: 0.02 ng/ml



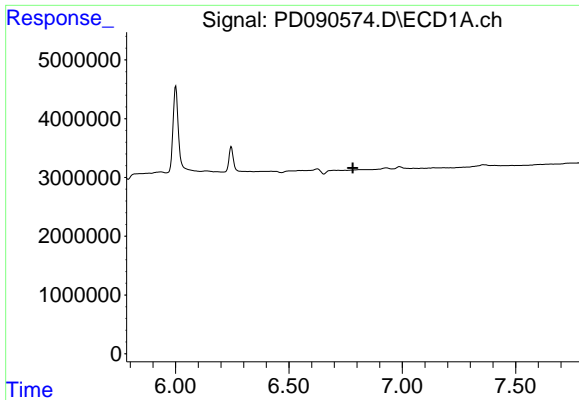
#14 Endrin

R.T.: 0.000 min  
 Exp R.T.: 6.569 min  
 Response: 0  
 Conc: N.D.



#14 Endrin

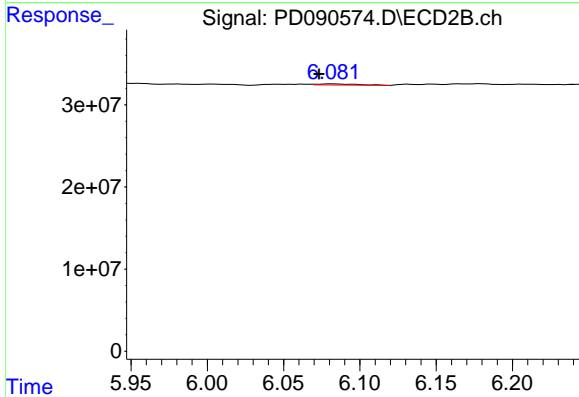
R.T.: 5.788 min  
 Delta R.T.: 0.006 min  
 Response: 45110085  
 Conc: 1.26 ng/ml



#15 Endosulfan II

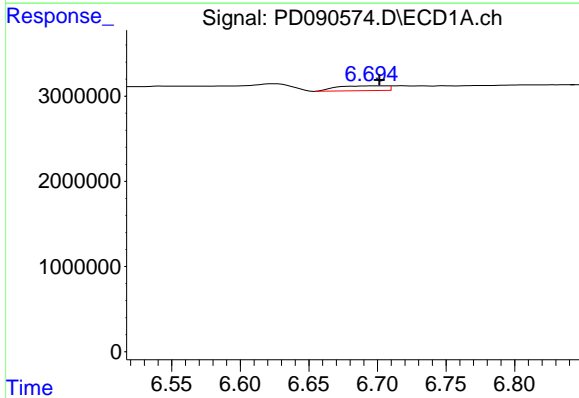
R.T.: 0.000 min  
 Exp R.T.: 6.782 min  
 Response: 0  
 Conc: N.D.

Instrument :  
 ECD\_D  
 ClientSampleId :



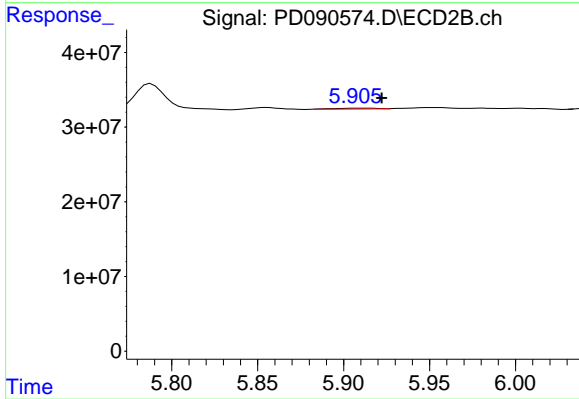
#15 Endosulfan II

R.T.: 6.083 min  
 Delta R.T.: 0.010 min  
 Response: 2330891  
 Conc: 0.07 ng/ml



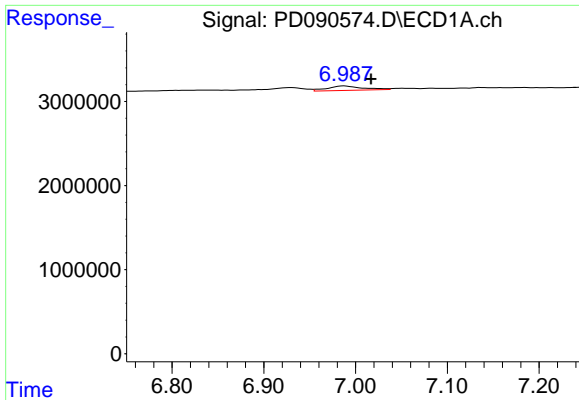
#16 4,4'-DDD

R.T.: 6.696 min  
 Delta R.T.: -0.005 min  
 Response: 1418107  
 Conc: 0.35 ng/ml



#16 4,4'-DDD

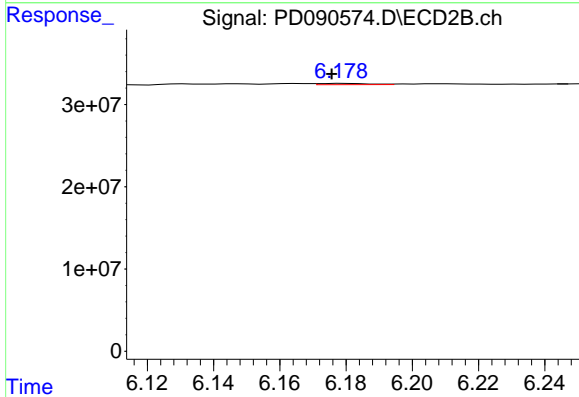
R.T.: 5.909 min  
 Delta R.T.: -0.014 min  
 Response: 1967064  
 Conc: 0.06 ng/ml



#17 4,4'-DDT

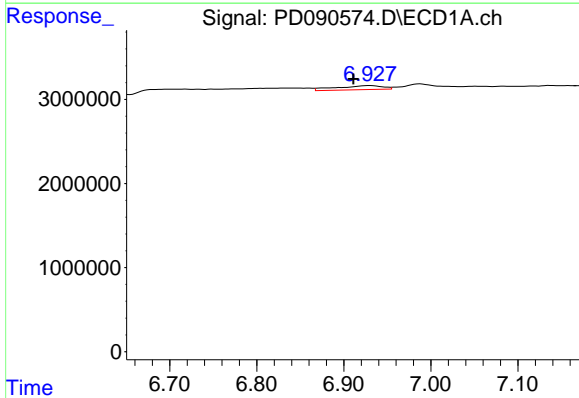
R.T.: 6.988 min  
 Delta R.T.: -0.029 min  
 Response: 1431146  
 Conc: 0.32 ng/ml

Instrument :  
 ECD\_D  
 ClientSampleId :



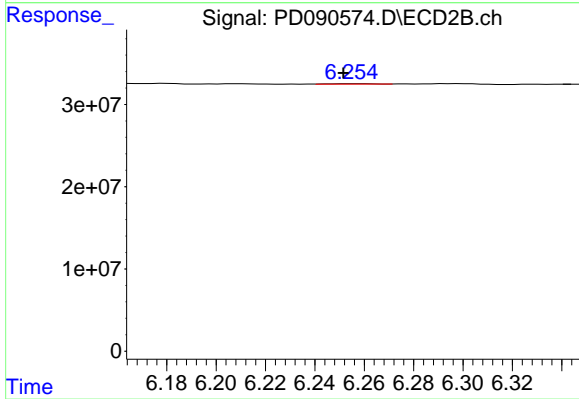
#17 4,4'-DDT

R.T.: 6.179 min  
 Delta R.T.: 0.003 min  
 Response: 1532387  
 Conc: 0.04 ng/ml



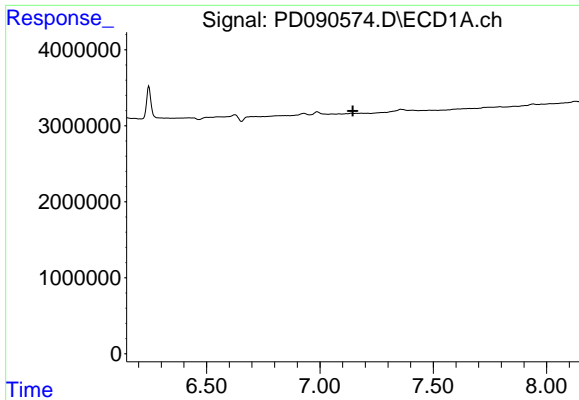
#18 Endrin aldehyde

R.T.: 6.930 min  
 Delta R.T.: 0.019 min  
 Response: 1754477  
 Conc: 0.51 ng/ml



#18 Endrin aldehyde

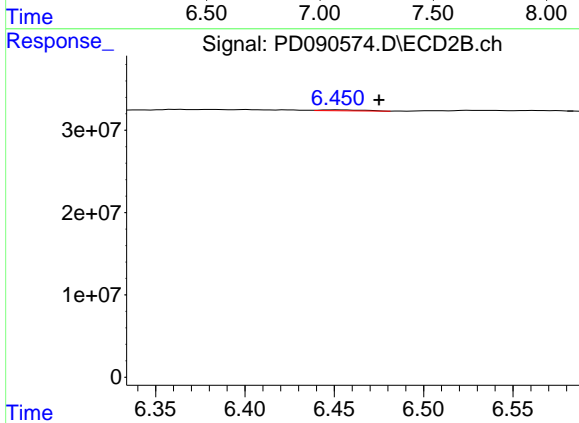
R.T.: 6.255 min  
 Delta R.T.: 0.004 min  
 Response: 669872  
 Conc: 0.03 ng/ml



#19 Endosulfan Sulfate

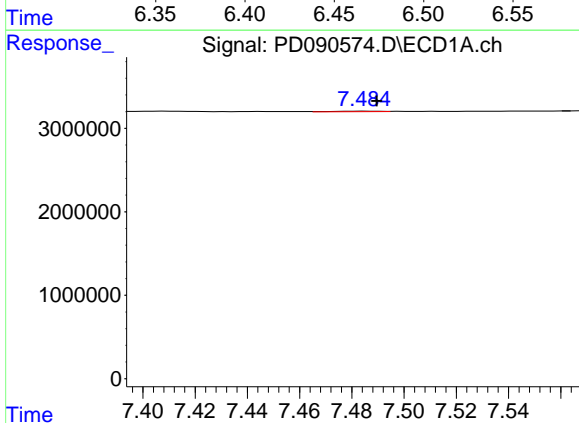
R.T.: 0.000 min  
 Exp R.T.: 7.146 min  
 Response: 0  
 Conc: N.D.

Instrument :  
 ECD\_D  
 ClientSampleId :



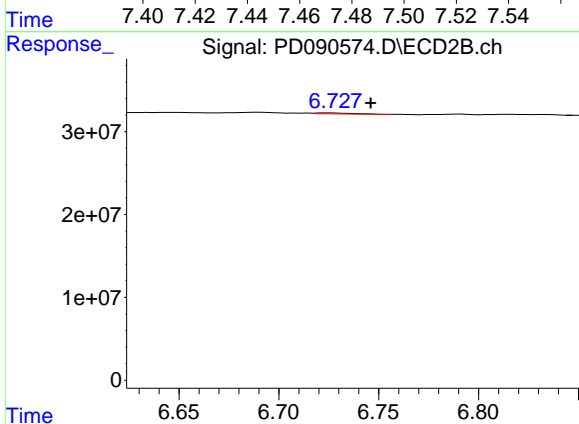
#19 Endosulfan Sulfate

R.T.: 6.452 min  
 Delta R.T.: -0.023 min  
 Response: 1829399  
 Conc: 0.06 ng/ml



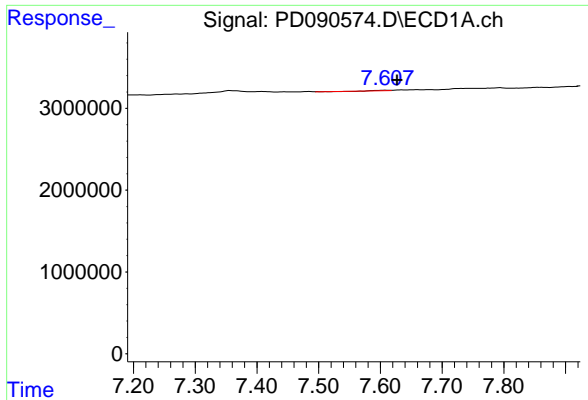
#20 Methoxychlor

R.T.: 7.485 min  
 Delta R.T.: -0.004 min  
 Response: 71239  
 Conc: 0.03 ng/ml



#20 Methoxychlor

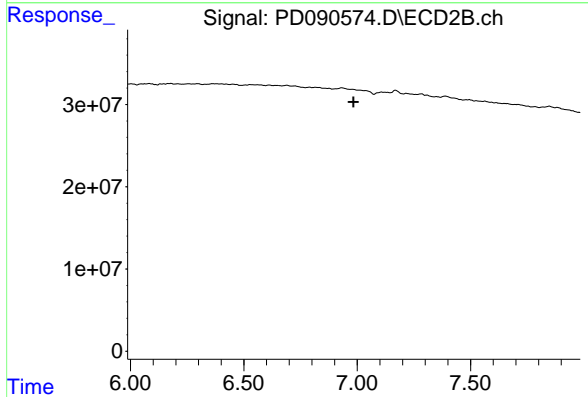
R.T.: 6.727 min  
 Delta R.T.: -0.019 min  
 Response: 1691979  
 Conc: 0.10 ng/ml



#21 Endrin ketone

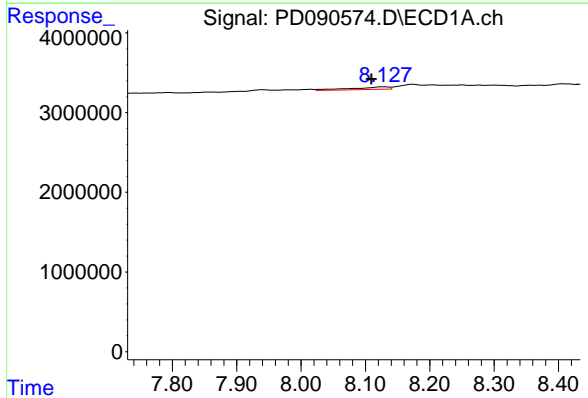
R.T.: 7.609 min  
 Delta R.T.: -0.018 min  
 Response: 51873  
 Conc: 0.01 ng/ml

Instrument :  
 ECD\_D  
 ClientSampleId :



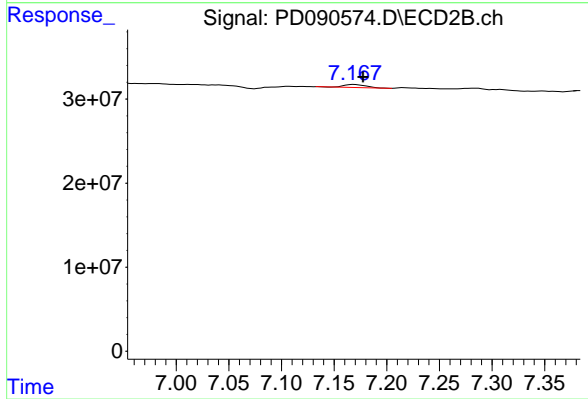
#21 Endrin ketone

R.T.: 0.000 min  
 Exp R.T. : 6.984 min  
 Response: 0  
 Conc: N.D.



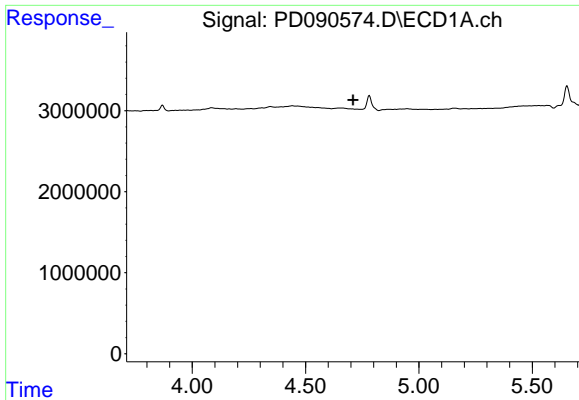
#22 Mirex

R.T.: 8.129 min  
 Delta R.T.: 0.019 min  
 Response: 1245536  
 Conc: 0.34 ng/ml



#22 Mirex

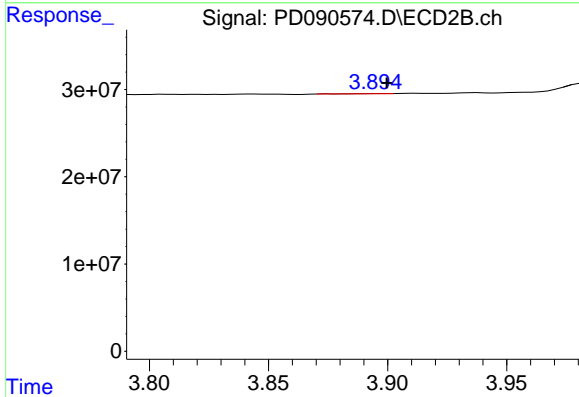
R.T.: 7.169 min  
 Delta R.T.: -0.009 min  
 Response: 5288775  
 Conc: 0.19 ng/ml



#23 Chlordane-1

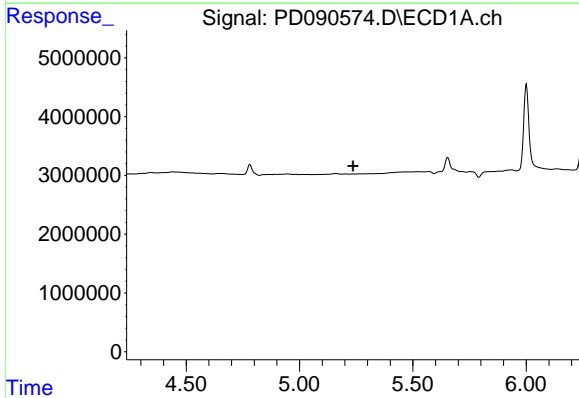
R.T.: 0.000 min  
 Exp R.T. : 4.710 min  
 Response: 0  
 Conc: N.D.

Instrument :  
 ECD\_D  
 ClientSampleId :



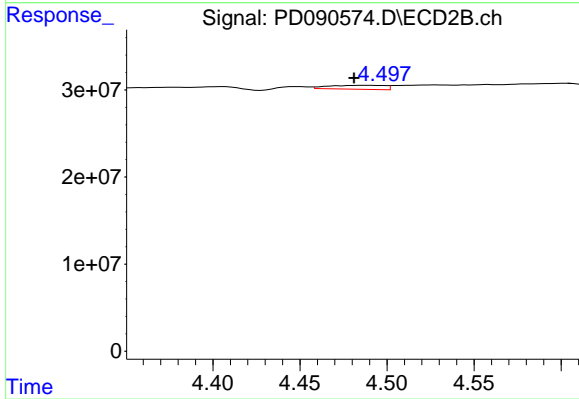
#23 Chlordane-1

R.T.: 3.897 min  
 Delta R.T.: -0.002 min  
 Response: 78159  
 Conc: 0.06 ng/ml



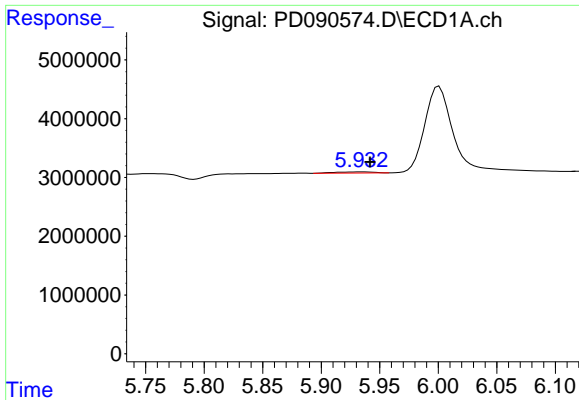
#24 Chlordane-2

R.T.: 0.000 min  
 Exp R.T. : 5.237 min  
 Response: 0  
 Conc: N.D.



#24 Chlordane-2

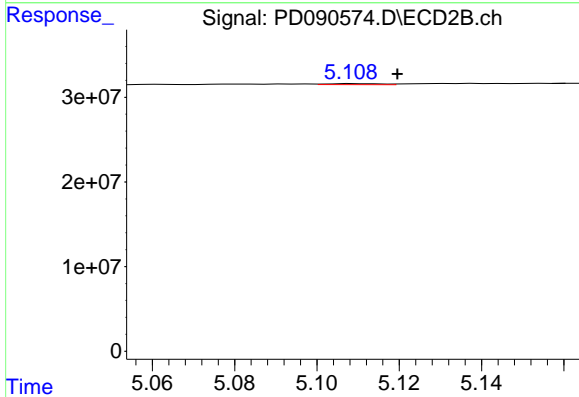
R.T.: 4.487 min  
 Delta R.T.: 0.006 min  
 Response: 9996140  
 Conc: 7.99 ng/ml



#25 Chlordane-3

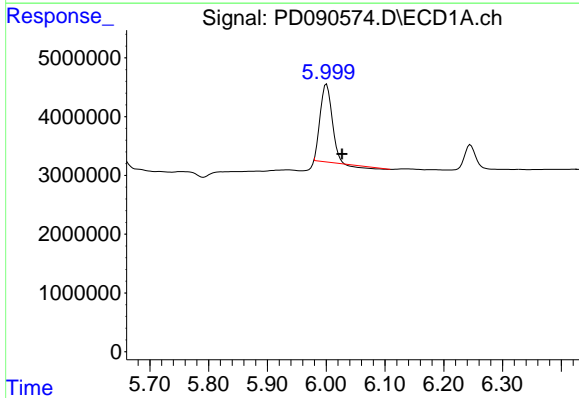
R.T.: 5.934 min  
 Delta R.T.: -0.008 min  
 Response: 448028  
 Conc: 0.54 ng/ml

Instrument :  
 ECD\_D  
 ClientSampleId :



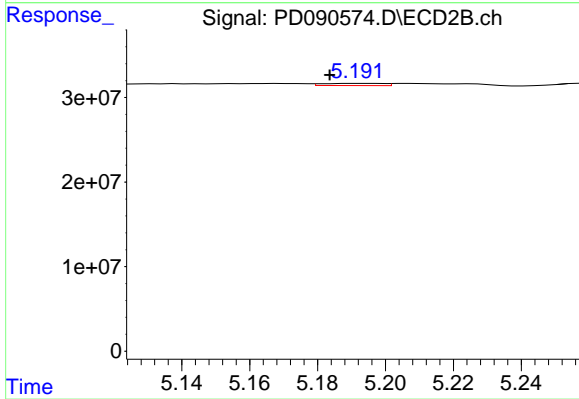
#25 Chlordane-3

R.T.: 5.109 min  
 Delta R.T.: -0.010 min  
 Response: 1131521  
 Conc: 0.30 ng/ml



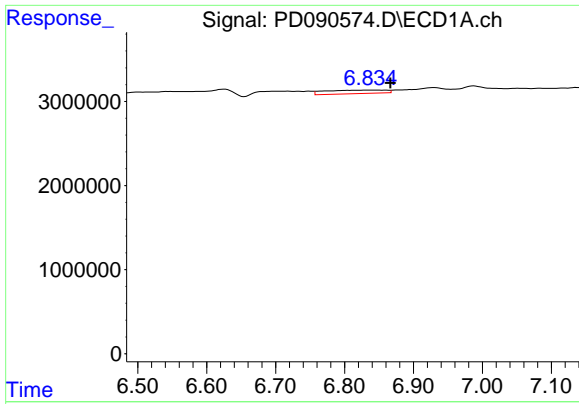
#26 Chlordane-4

R.T.: 6.001 min  
 Delta R.T.: -0.026 min  
 Response: 17903098  
 Conc: 17.54 ng/ml



#26 Chlordane-4

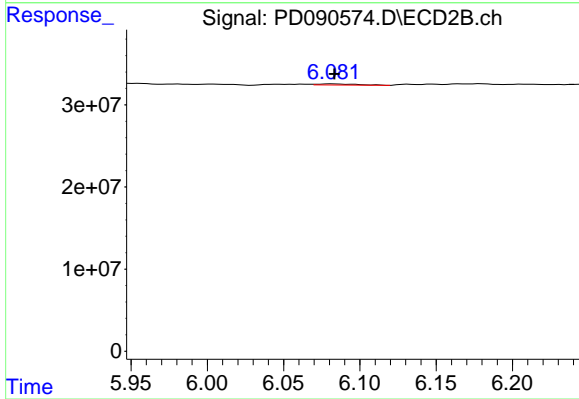
R.T.: 5.193 min  
 Delta R.T.: 0.009 min  
 Response: 3241390  
 Conc: 1.00 ng/ml



#27 Chlordane-5

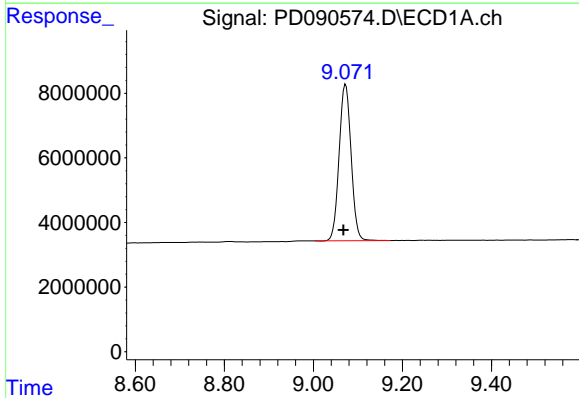
R.T.: 6.860 min  
 Delta R.T.: -0.007 min  
 Response: 2512742  
 Conc: 14.11 ng/ml

Instrument :  
 ECD\_D  
 ClientSampleId :



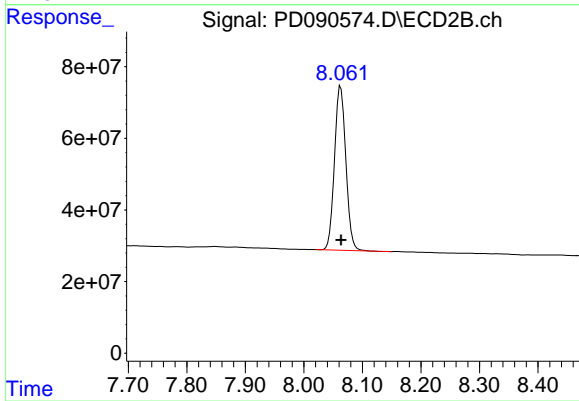
#27 Chlordane-5

R.T.: 6.083 min  
 Delta R.T.: 0.000 min  
 Response: 2330891  
 Conc: 1.54 ng/ml



#28 Decachlorobiphenyl

R.T.: 9.072 min  
 Delta R.T.: 0.005 min  
 Response: 90632440  
 Conc: 18.78 ng/ml



#28 Decachlorobiphenyl

R.T.: 8.063 min  
 Delta R.T.: 0.000 min  
 Response: 618010940  
 Conc: 19.07 ng/ml