

Data Path : Z:\pestpcbsrv\HPCHEM1\ECD\_D\Data\PD101425\  
 Data File : PD090577.D  
 Signal(s) : Signal #1: ECD1A.ch Signal #2: ECD2B.ch  
 Acq On : 14 Oct 2025 12:24  
 Operator : AR\AJ  
 Sample : Q3323-02  
 Misc :  
 ALS Vial : 8 Sample Multiplier: 1

Instrument :  
 ECD\_D  
 ClientSampleId :

Integration File signal 1: autoint1.e  
 Integration File signal 2: autoint2.e  
 Quant Time: Oct 15 07:37:20 2025  
 Quant Method : Z:\pestpcbsrv\HPCHEM1\ECD\_D\Method\PD091825.M  
 Quant Title : GC Extractables  
 QLast Update : Fri Sep 19 05:52:38 2025  
 Response via : Initial Calibration  
 Integrator: ChemStation

Volume Inj. : 1 µl  
 Signal #1 Phase : ZB-MR2 Signal #2 Phase: ZB-MR2  
 Signal #1 Info : 30M x 0.32mm x0.5 Signal #2 Info : 30M x 0.32mm x 0.25µm

	Compound	RT#1	RT#2	Resp#1	Resp#2	ng/ml	ng/ml
-----							
System Monitoring Compounds							
1)	SA Tetrachlo...	3.545	2.875	92943398	773.2E6	28.594	28.169
28)	SA Decachlor...	9.066	8.061	79067407	405.3E6	16.387	12.503
Target Compounds							
2)	A alpha-BHC	0.000	3.400	0	8412490	N.D.	0.192 #
3)	MA gamma-BHC...	4.299f	3.724	1007141	600026	0.152	0.015 #
4)	MA Heptachlor	4.910	4.088	1072403	11494646	0.162	0.282 #
5)	MB Aldrin	5.252	4.366	1666705	17190049	0.262	0.430 #
6)	B beta-BHC	4.490f	4.034	1743311	15462741	0.676	0.892 #
7)	B delta-BHC	4.773	4.269	10779211	11628286	1.669	0.282 #
8)	Heptachlo...	5.677	4.861	7359890	19597673	1.288	0.532 #
9)	A Endosulfan I	6.098f	5.266f	3523293	22681835	0.652	0.655
10)	B gamma-Chl...	5.940	5.117	2398445	45368967	0.420	1.155 #
11)	B alpha-Chl...	6.022	5.182	3084651	114.3E6	0.535	3.036 #
12)	B 4,4'-DDE	6.191	5.367	4005868	54584180	0.769	1.426 #
13)	MA Dieldrin	6.341	5.503	-102293	90418533	N.D.	2.322
14)	MA Endrin	6.568	5.786	11283021	678.4E6	2.306	18.932 #
15)	B Endosulfa...	6.782	6.062	11652270	-12175622	2.389	N.D. #
16)	A 4,4'-DDD	6.699	5.921	40467228	14768066	9.875	0.455 #
17)	MA 4,4'-DDT	7.018	6.170	2022964	92320642	0.454	2.685 #
18)	B Endrin al...	6.922	0.000	12890804	0	3.758	N.D. #
19)	B Endosulfa...	7.146	6.475	49492	40687118	0.011	1.245 #
20)	A Methoxychlor	7.472f	6.727f	4468692	18767216	1.896	1.079 #
21)	B Endrin ke...	7.611f	6.959f	10599154	12332656	2.142	0.342 #
22)	Mirex	0.000	7.173	0	101.0E6	N.D.	3.660 #
23)	Chlordane-1	0.000	3.897	0	30111547	N.D.	25.020 #
24)	Chlordane-2	5.252	4.463	1666705	32353093	7.767	25.873 #
25)	Chlordane-3	5.940	5.117	2398445	45368967	2.865	11.969 #
26)	Chlordane-4	6.022	5.182	3084651	114.3E6	3.023	35.119 #
27)	Chlordane-5	6.839f	6.099	22138930	74177505	124.352	48.878 #

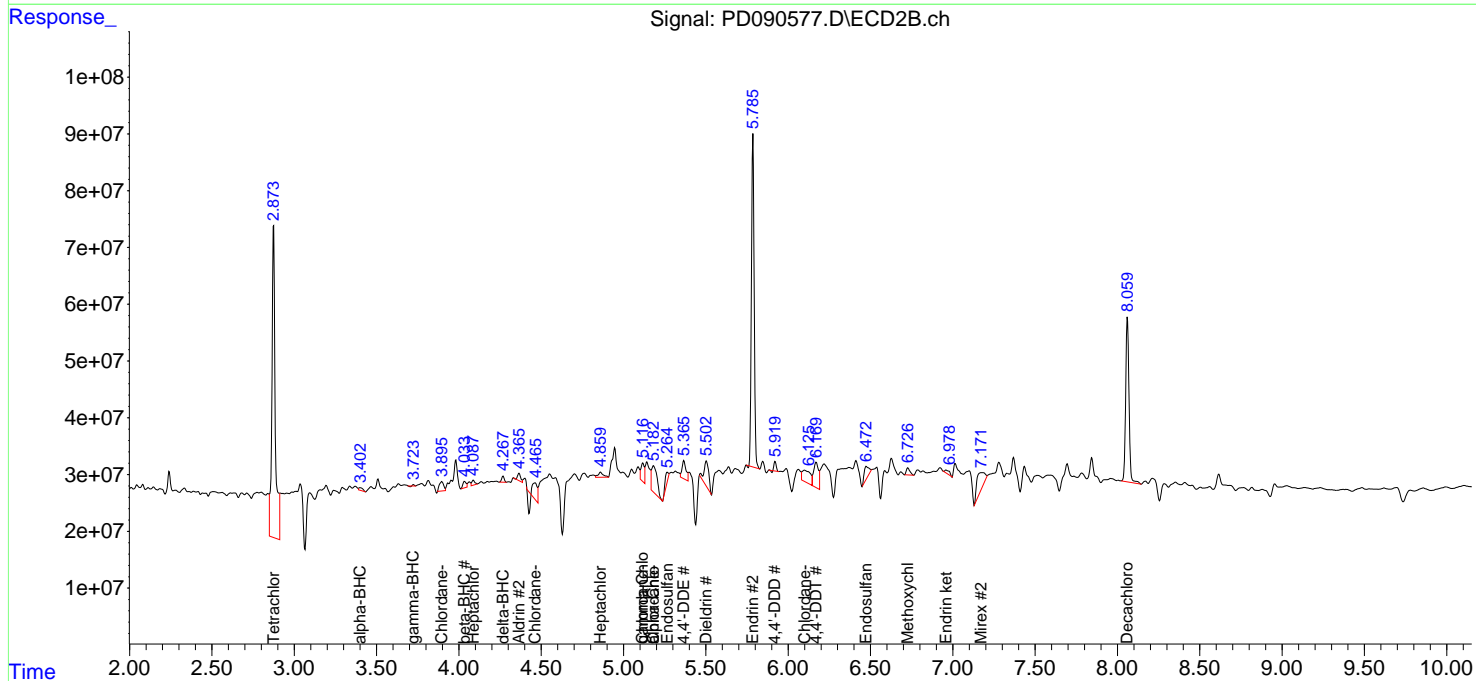
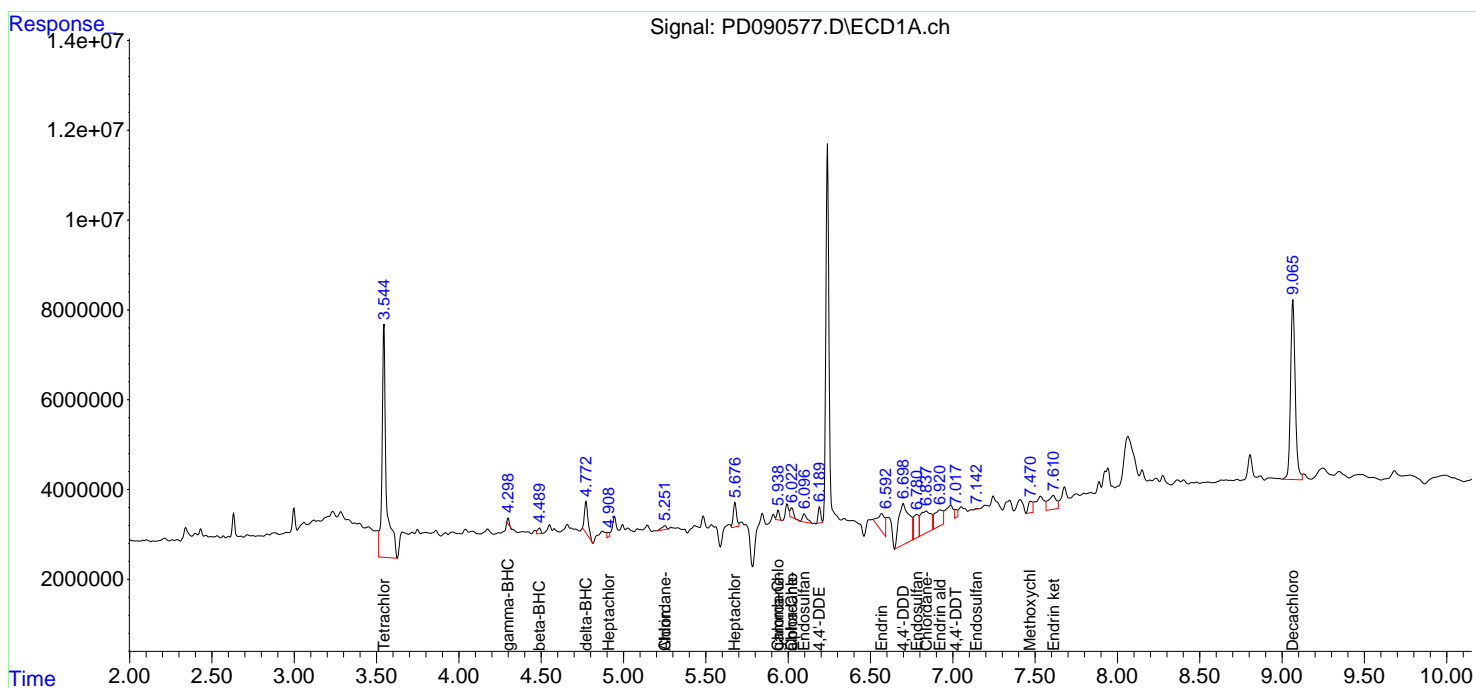
(f)=RT Delta > 1/2 Window (#)=Amounts differ by > 25% (m)=manual int.

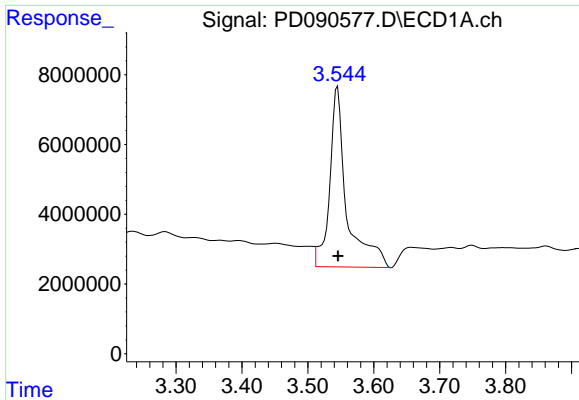
Data Path : Z:\pestpcbsrv\HPCHEM1\ECD\_D\Data\PD101425\  
 Data File : PD090577.D  
 Signal(s) : Signal #1: ECD1A.ch Signal #2: ECD2B.ch  
 Acq On : 14 Oct 2025 12:24  
 Operator : AR\AJ  
 Sample : Q3323-02  
 Misc :  
 ALS Vial : 8 Sample Multiplier: 1

Instrument :  
 ECD\_D  
 ClientSampleId :

Integration File signal 1: autoint1.e  
 Integration File signal 2: autoint2.e  
 Quant Time: Oct 15 07:37:20 2025  
 Quant Method : Z:\pestpcbsrv\HPCHEM1\ECD\_D\Method\PD091825.M  
 Quant Title : GC Extractables  
 QLast Update : Fri Sep 19 05:52:38 2025  
 Response via : Initial Calibration  
 Integrator: ChemStation

Volume Inj. : 1 µl  
 Signal #1 Phase : ZB-MR1 Signal #2 Phase: ZB-MR2  
 Signal #1 Info : 30M x 0.32mm x0.5 Signal #2 Info : 30M x 0.32mm x 0.25µm

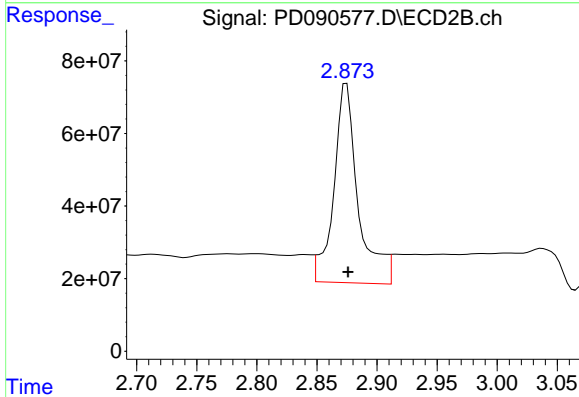




#1 Tetrachloro-m-xylene

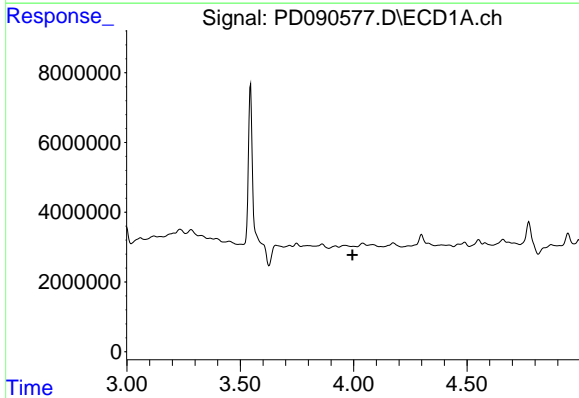
R.T.: 3.545 min  
 Delta R.T.: 0.000 min  
 Response: 92943398  
 Conc: 28.59 ng/ml

Instrument :  
 ECD\_D  
 ClientSampleId :



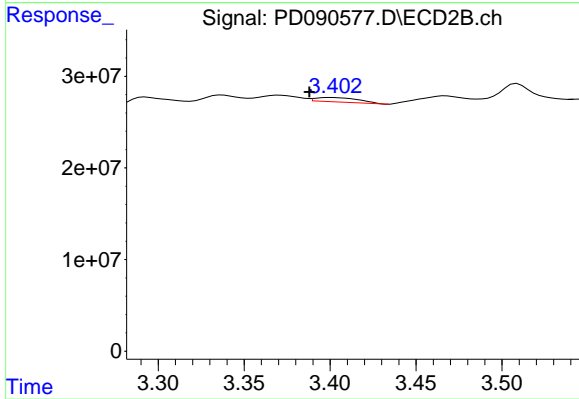
#1 Tetrachloro-m-xylene

R.T.: 2.875 min  
 Delta R.T.: -0.001 min  
 Response: 773230455  
 Conc: 28.17 ng/ml



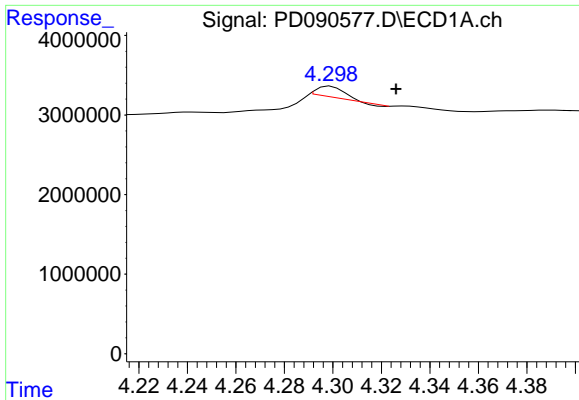
#2 alpha-BHC

R.T.: 0.000 min  
 Exp R.T. : 3.995 min  
 Response: 0  
 Conc: N.D.



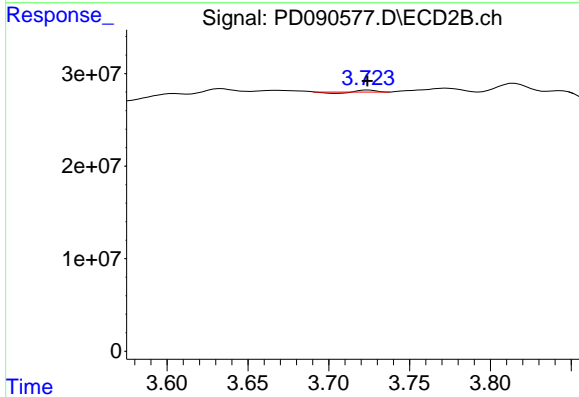
#2 alpha-BHC

R.T.: 3.400 min  
 Delta R.T.: 0.012 min  
 Response: 8412490  
 Conc: 0.19 ng/ml

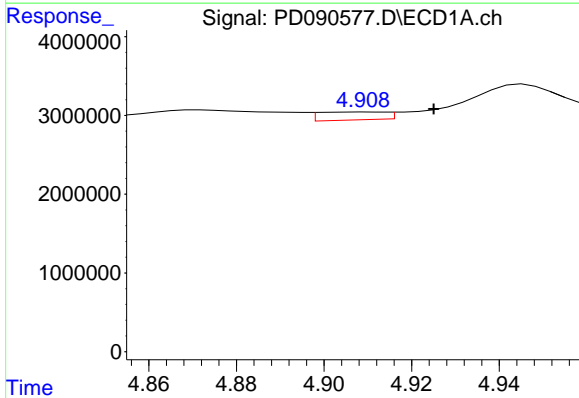


#3 gamma-BHC (Lindane)  
 R.T.: 4.299 min  
 Delta R.T.: -0.027 min  
 Response: 1007141  
 Conc: 0.15 ng/ml

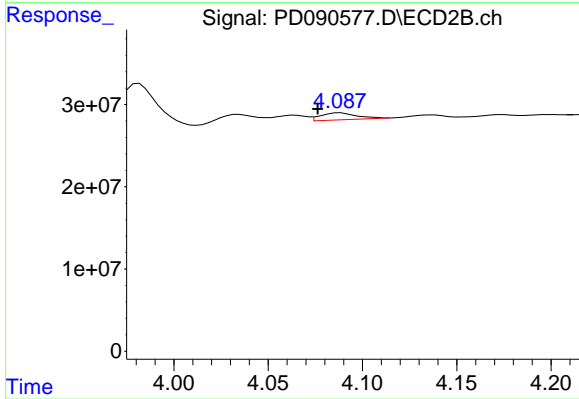
Instrument :  
 ECD\_D  
 ClientSampleId :



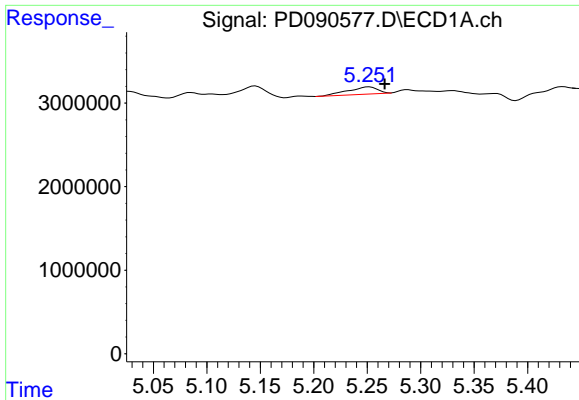
#3 gamma-BHC (Lindane)  
 R.T.: 3.724 min  
 Delta R.T.: 0.000 min  
 Response: 600026  
 Conc: 0.01 ng/ml



#4 Heptachlor  
 R.T.: 4.910 min  
 Delta R.T.: -0.015 min  
 Response: 1072403  
 Conc: 0.16 ng/ml

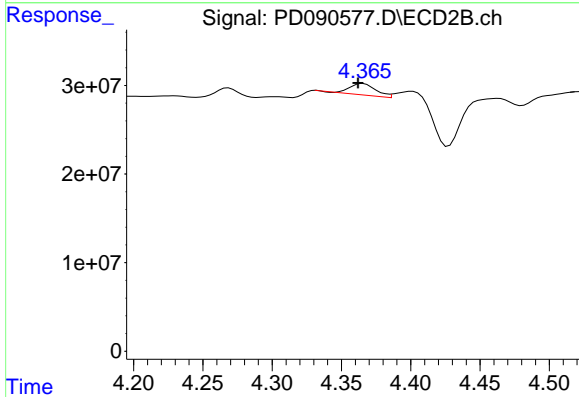


#4 Heptachlor  
 R.T.: 4.088 min  
 Delta R.T.: 0.012 min  
 Response: 11494646  
 Conc: 0.28 ng/ml

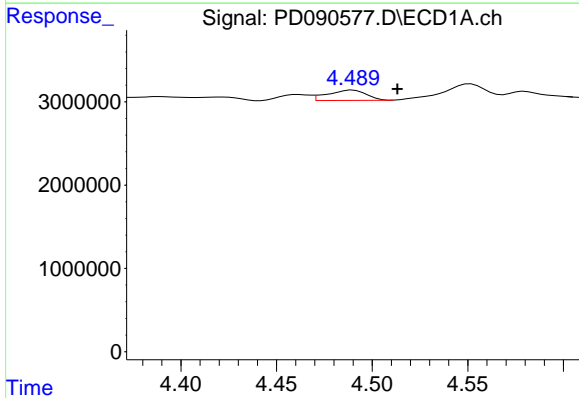


#5 Aldrin  
 R.T.: 5.252 min  
 Delta R.T.: -0.014 min  
 Response: 1666705  
 Conc: 0.26 ng/ml

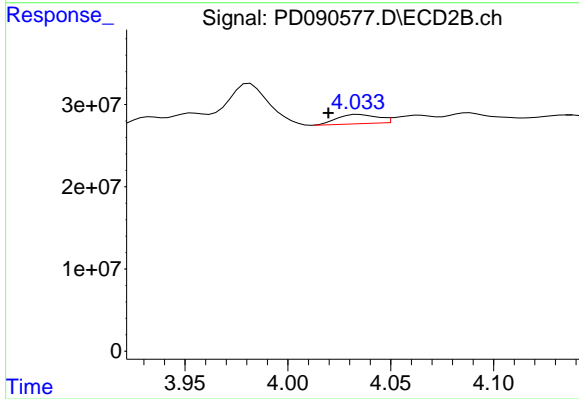
Instrument :  
 ECD\_D  
 ClientSampleId :



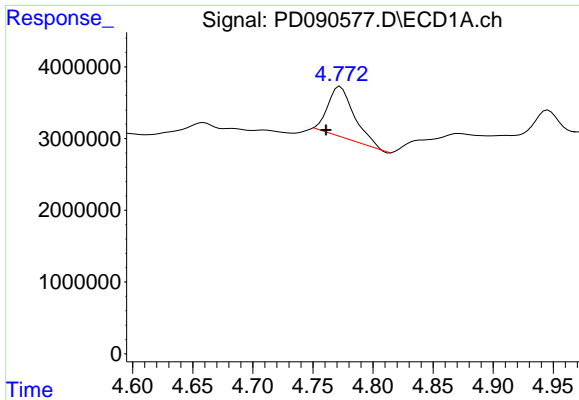
#5 Aldrin  
 R.T.: 4.366 min  
 Delta R.T.: 0.004 min  
 Response: 17190049  
 Conc: 0.43 ng/ml



#6 beta-BHC  
 R.T.: 4.490 min  
 Delta R.T.: -0.023 min  
 Response: 1743311  
 Conc: 0.68 ng/ml



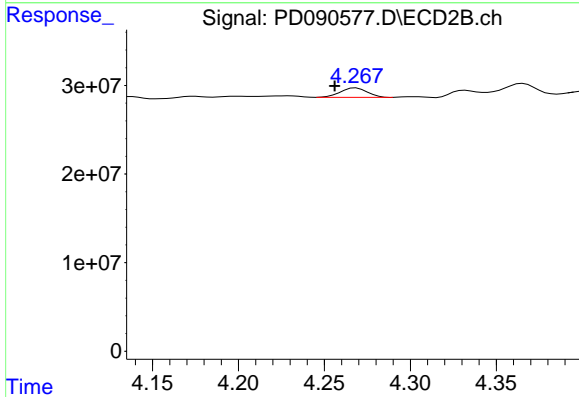
#6 beta-BHC  
 R.T.: 4.034 min  
 Delta R.T.: 0.014 min  
 Response: 15462741  
 Conc: 0.89 ng/ml



#7 delta-BHC

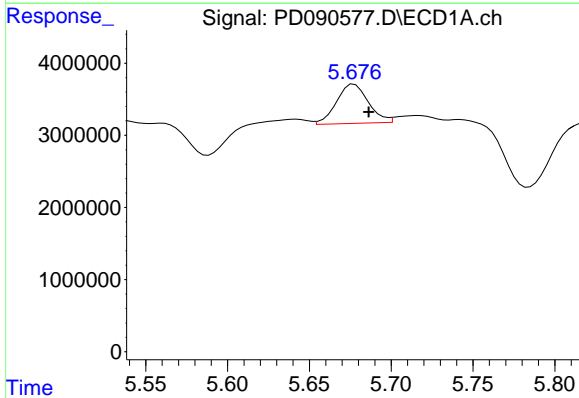
R.T.: 4.773 min  
 Delta R.T.: 0.012 min  
 Response: 10779211  
 Conc: 1.67 ng/ml

Instrument :  
 ECD\_D  
 ClientSampleId :



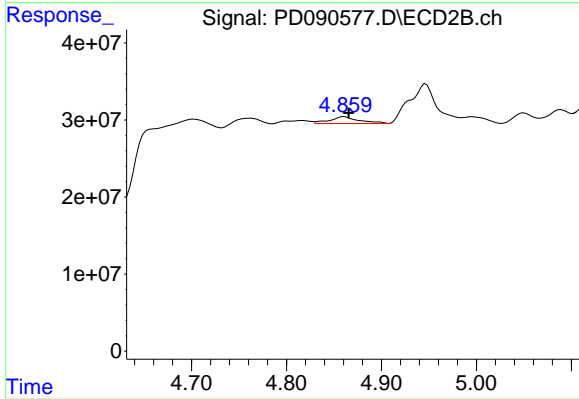
#7 delta-BHC

R.T.: 4.269 min  
 Delta R.T.: 0.013 min  
 Response: 11628286  
 Conc: 0.28 ng/ml



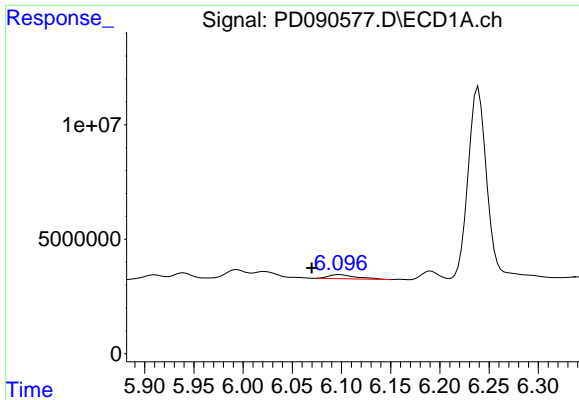
#8 Heptachlor epoxide

R.T.: 5.677 min  
 Delta R.T.: -0.009 min  
 Response: 7359890  
 Conc: 1.29 ng/ml



#8 Heptachlor epoxide

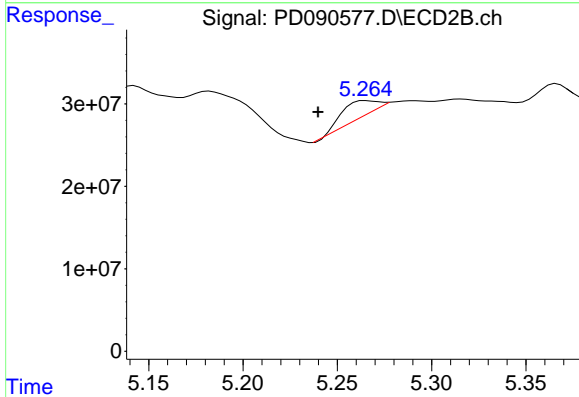
R.T.: 4.861 min  
 Delta R.T.: -0.005 min  
 Response: 19597673  
 Conc: 0.53 ng/ml



#9 Endosulfan I

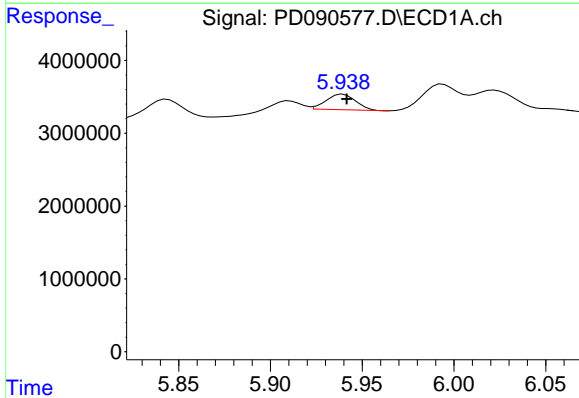
R.T.: 6.098 min  
 Delta R.T.: 0.028 min  
 Response: 3523293  
 Conc: 0.65 ng/ml

Instrument :  
 ECD\_D  
 ClientSampleId :



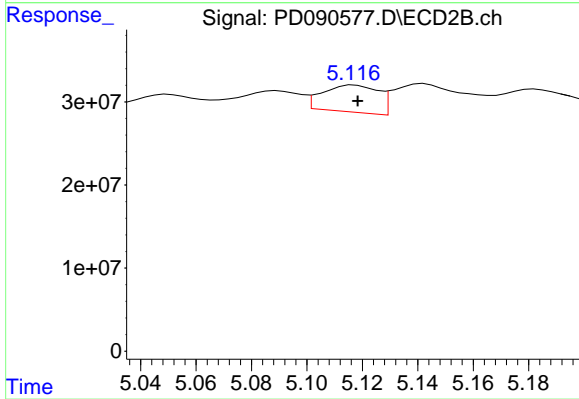
#9 Endosulfan I

R.T.: 5.266 min  
 Delta R.T.: 0.026 min  
 Response: 22681835  
 Conc: 0.66 ng/ml



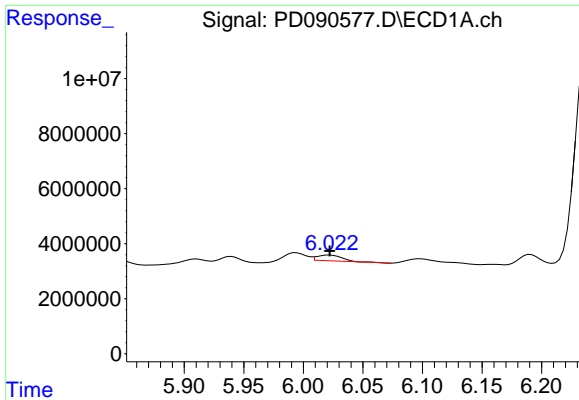
#10 gamma-Chlordane

R.T.: 5.940 min  
 Delta R.T.: -0.002 min  
 Response: 2398445  
 Conc: 0.42 ng/ml



#10 gamma-Chlordane

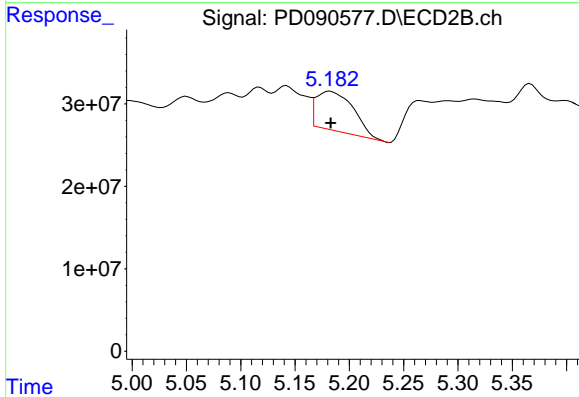
R.T.: 5.117 min  
 Delta R.T.: -0.001 min  
 Response: 45368967  
 Conc: 1.15 ng/ml



#11 alpha-Chlordane

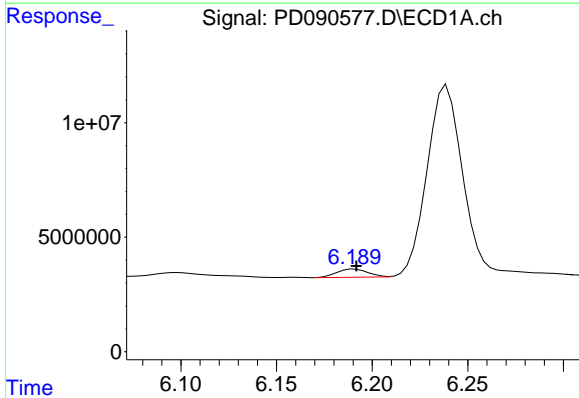
R.T.: 6.022 min  
 Delta R.T.: 0.000 min  
 Response: 3084651  
 Conc: 0.54 ng/ml

Instrument :  
 ECD\_D  
 ClientSampleId :



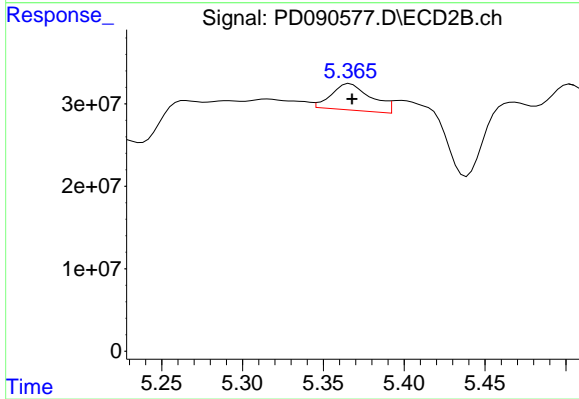
#11 alpha-Chlordane

R.T.: 5.182 min  
 Delta R.T.: 0.000 min  
 Response: 114349161  
 Conc: 3.04 ng/ml



#12 4,4'-DDE

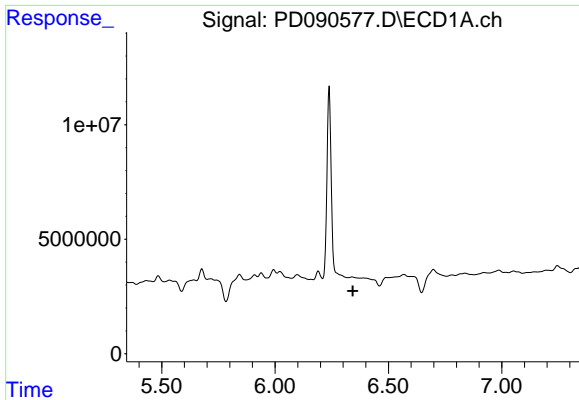
R.T.: 6.191 min  
 Delta R.T.: -0.001 min  
 Response: 4005868  
 Conc: 0.77 ng/ml



#12 4,4'-DDE

R.T.: 5.367 min  
 Delta R.T.: -0.001 min  
 Response: 54584180  
 Conc: 1.43 ng/ml

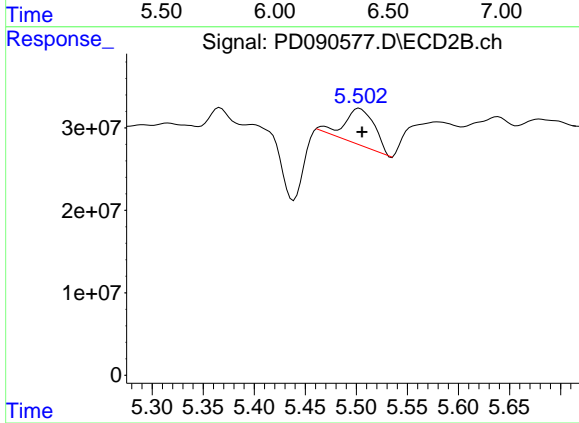




#13 Dieldrin

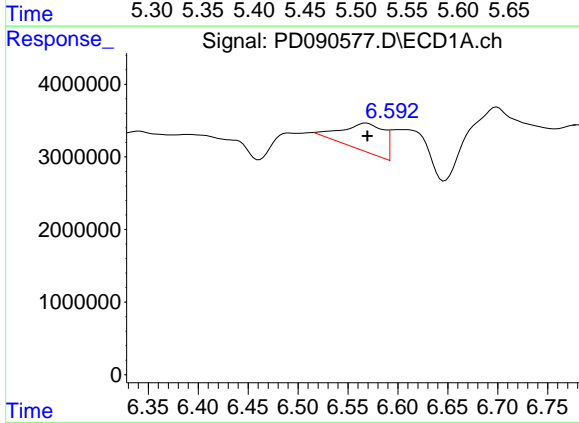
R.T.: 6.341 min  
 Delta R.T.: -0.002 min  
 Response: -102293  
 Conc: N.D.

Instrument :  
 ECD\_D  
 ClientSampleId :



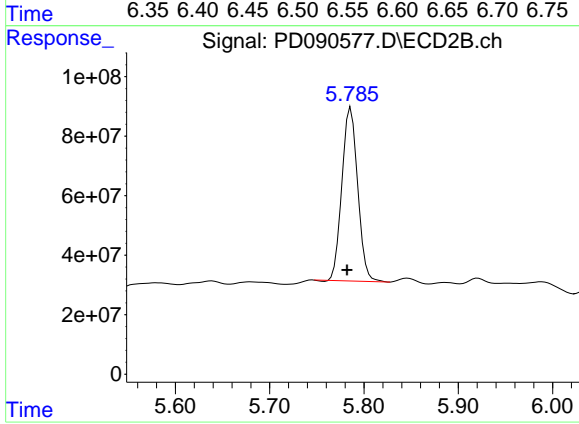
#13 Dieldrin

R.T.: 5.503 min  
 Delta R.T.: -0.003 min  
 Response: 90418533  
 Conc: 2.32 ng/ml



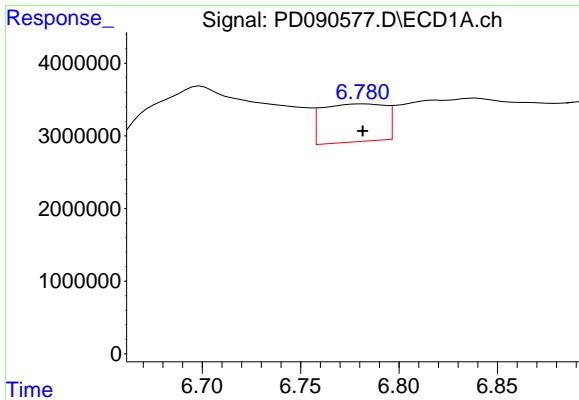
#14 Endrin

R.T.: 6.568 min  
 Delta R.T.: 0.000 min  
 Response: 11283021  
 Conc: 2.31 ng/ml



#14 Endrin

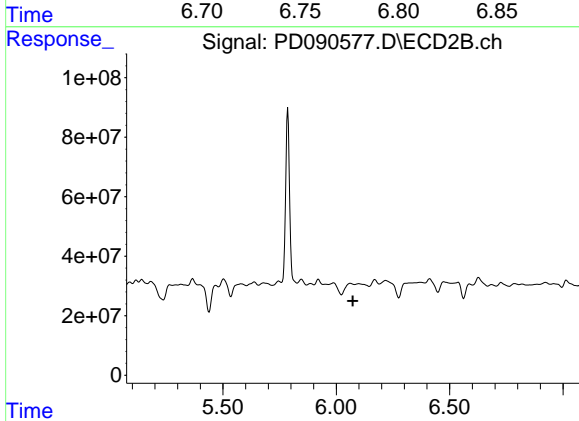
R.T.: 5.786 min  
 Delta R.T.: 0.004 min  
 Response: 678375626  
 Conc: 18.93 ng/ml



#15 Endosulfan II

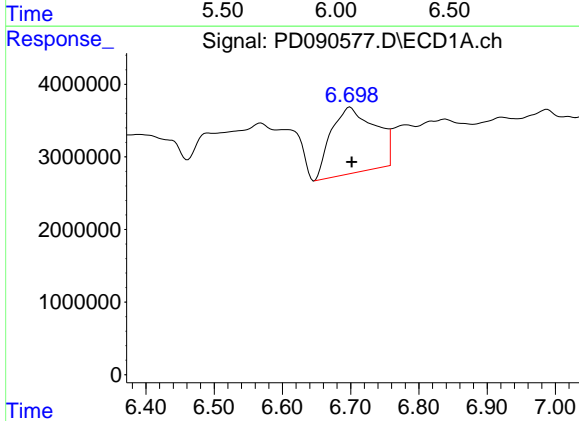
R.T.: 6.782 min  
Delta R.T.: 0.000 min  
Response: 11652270  
Conc: 2.39 ng/ml

Instrument :  
ECD\_D  
ClientSampleId :



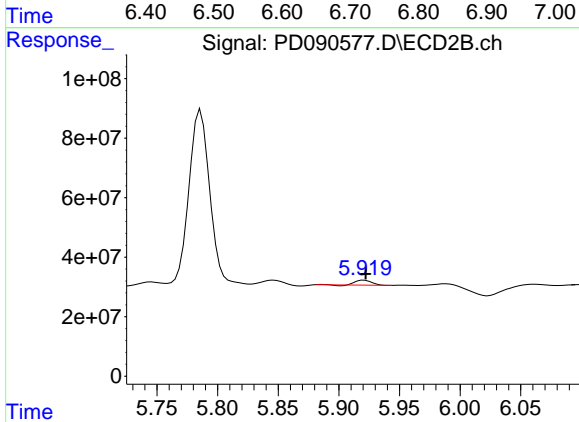
#15 Endosulfan II

R.T.: 6.062 min  
Delta R.T.: -0.011 min  
Response: -12175622  
Conc: N.D.



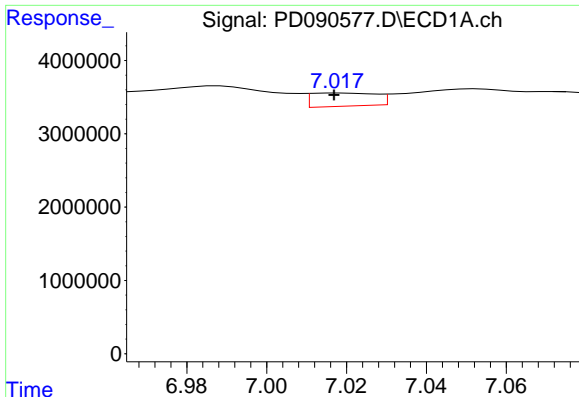
#16 4,4'-DDD

R.T.: 6.699 min  
Delta R.T.: -0.002 min  
Response: 40467228  
Conc: 9.88 ng/ml



#16 4,4'-DDD

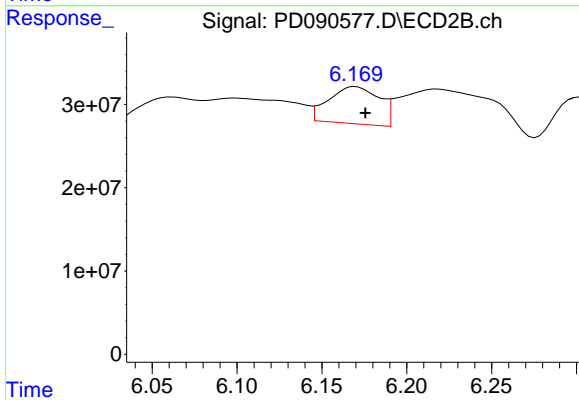
R.T.: 5.921 min  
Delta R.T.: -0.001 min  
Response: 14768066  
Conc: 0.46 ng/ml



#17 4,4'-DDT

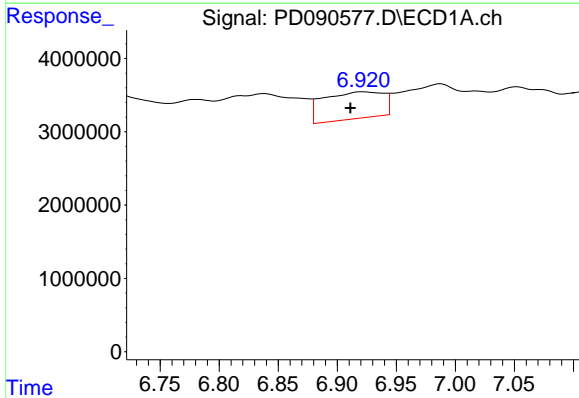
R.T.: 7.018 min  
 Delta R.T.: 0.002 min  
 Response: 2022964  
 Conc: 0.45 ng/ml

Instrument :  
 ECD\_D  
 ClientSampleId :



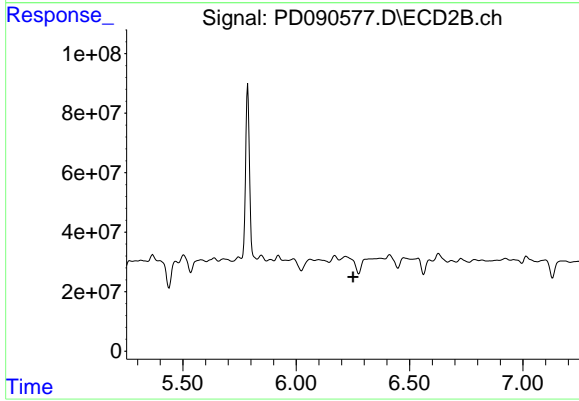
#17 4,4'-DDT

R.T.: 6.170 min  
 Delta R.T.: -0.006 min  
 Response: 92320642  
 Conc: 2.69 ng/ml



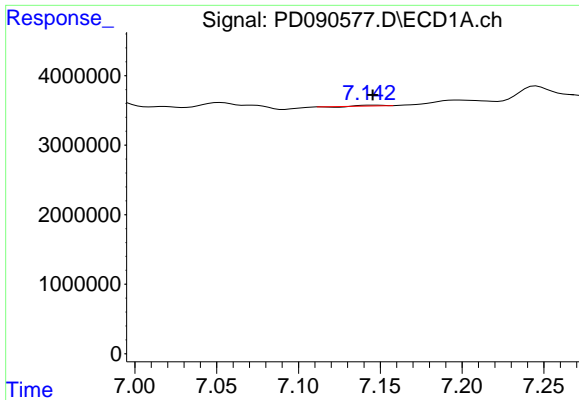
#18 Endrin aldehyde

R.T.: 6.922 min  
 Delta R.T.: 0.011 min  
 Response: 12890804  
 Conc: 3.76 ng/ml



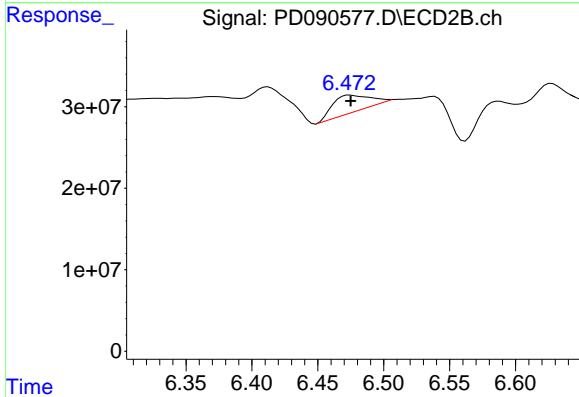
#18 Endrin aldehyde

R.T.: 0.000 min  
 Exp R.T. : 6.252 min  
 Response: 0  
 Conc: N.D.

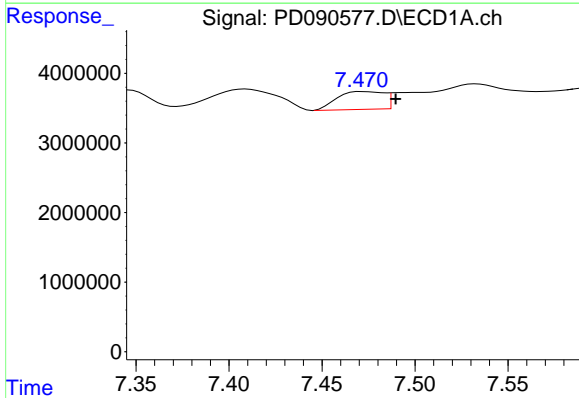


#19 Endosulfan Sulfate  
 R.T.: 7.146 min  
 Delta R.T.: 0.000 min  
 Response: 49492  
 Conc: 0.01 ng/ml

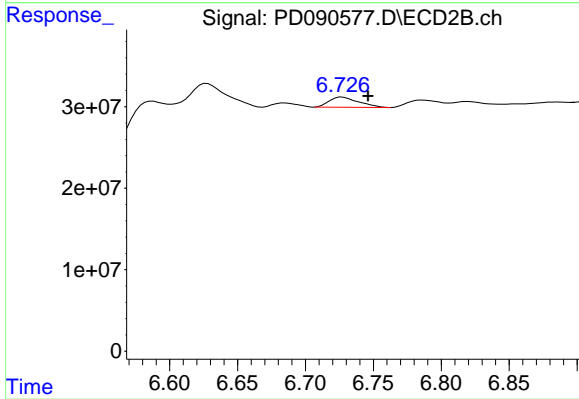
Instrument :  
 ECD\_D  
 ClientSampleId :



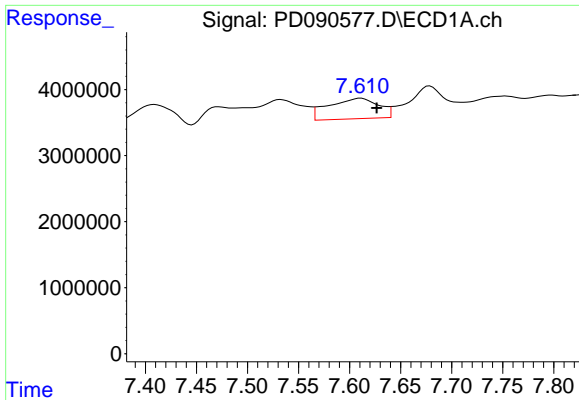
#19 Endosulfan Sulfate  
 R.T.: 6.475 min  
 Delta R.T.: 0.000 min  
 Response: 40687118  
 Conc: 1.24 ng/ml



#20 Methoxychlor  
 R.T.: 7.472 min  
 Delta R.T.: -0.017 min  
 Response: 4468692  
 Conc: 1.90 ng/ml



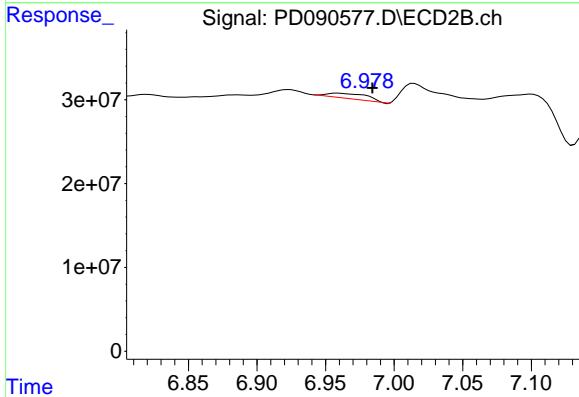
#20 Methoxychlor  
 R.T.: 6.727 min  
 Delta R.T.: -0.019 min  
 Response: 18767216  
 Conc: 1.08 ng/ml



#21 Endrin ketone

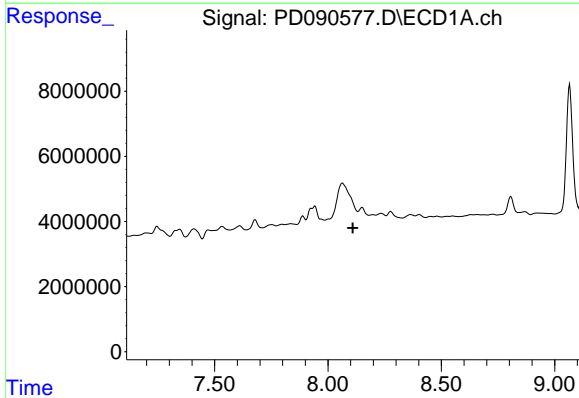
R.T.: 7.611 min  
 Delta R.T.: -0.016 min  
 Response: 10599154  
 Conc: 2.14 ng/ml

Instrument :  
 ECD\_D  
 ClientSampleId :



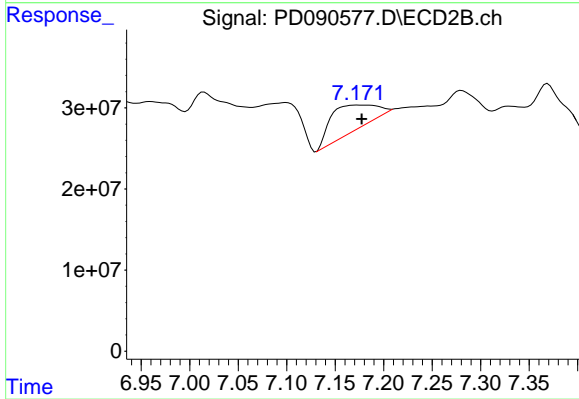
#21 Endrin ketone

R.T.: 6.959 min  
 Delta R.T.: -0.025 min  
 Response: 12332656  
 Conc: 0.34 ng/ml



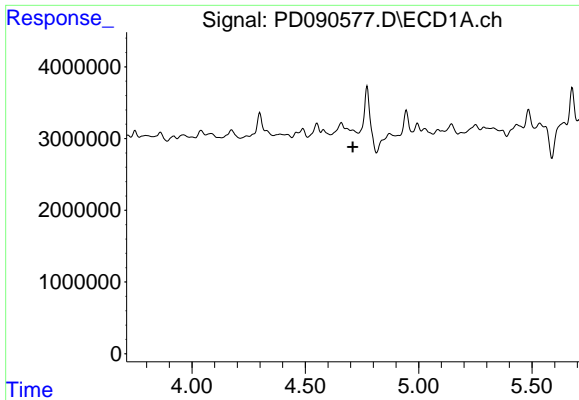
#22 Mirex

R.T.: 0.000 min  
 Exp R.T. : 8.109 min  
 Response: 0  
 Conc: N.D.



#22 Mirex

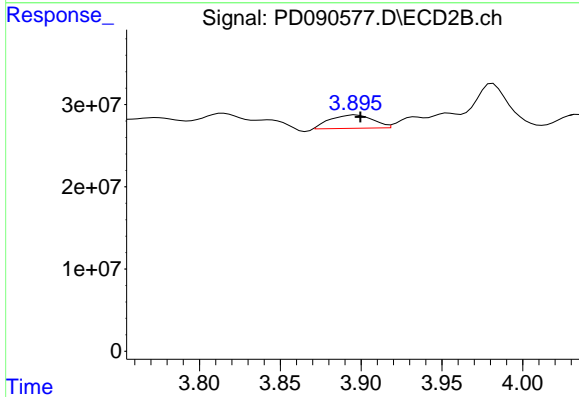
R.T.: 7.173 min  
 Delta R.T.: -0.004 min  
 Response: 101024779  
 Conc: 3.66 ng/ml



#23 Chlordane-1

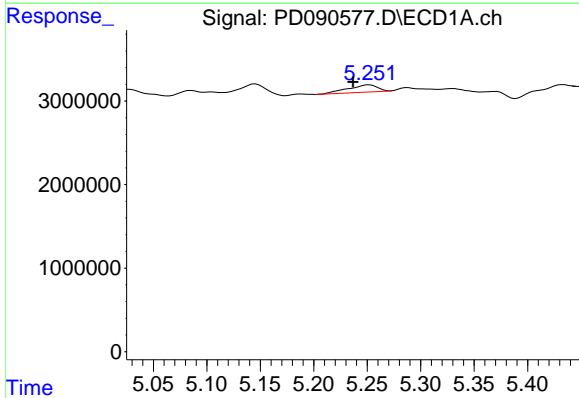
R.T.: 0.000 min  
 Exp R.T.: 4.710 min  
 Response: 0  
 Conc: N.D.

Instrument :  
 ECD\_D  
 ClientSampleId :



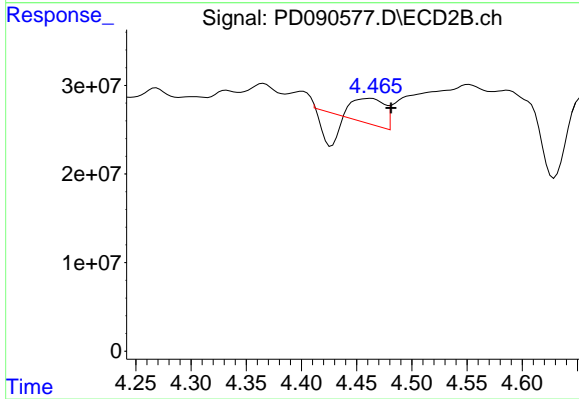
#23 Chlordane-1

R.T.: 3.897 min  
 Delta R.T.: -0.003 min  
 Response: 30111547  
 Conc: 25.02 ng/ml



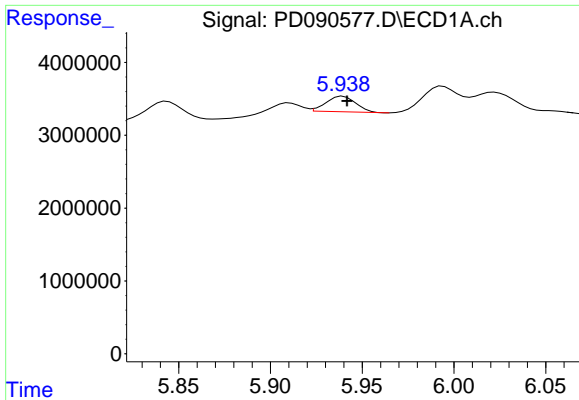
#24 Chlordane-2

R.T.: 5.252 min  
 Delta R.T.: 0.015 min  
 Response: 1666705  
 Conc: 7.77 ng/ml



#24 Chlordane-2

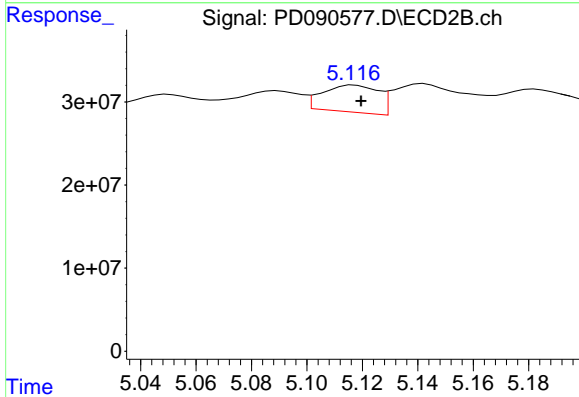
R.T.: 4.463 min  
 Delta R.T.: -0.018 min  
 Response: 32353093  
 Conc: 25.87 ng/ml



#25 Chlordane-3

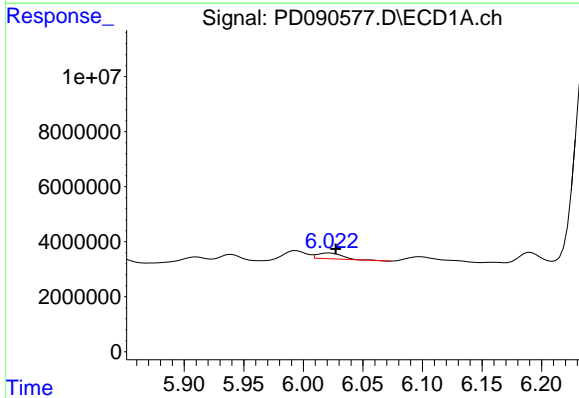
R.T.: 5.940 min  
 Delta R.T.: -0.002 min  
 Response: 2398445  
 Conc: 2.87 ng/ml

Instrument :  
 ECD\_D  
 ClientSampleId :



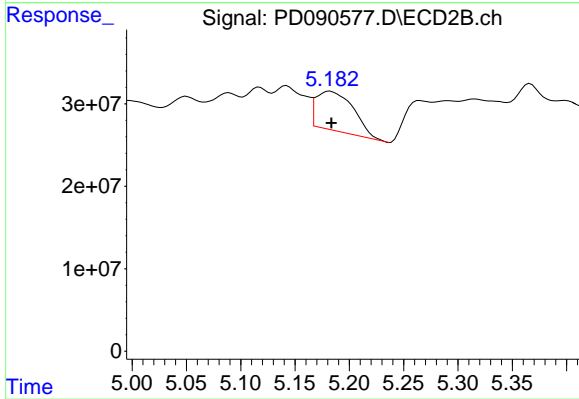
#25 Chlordane-3

R.T.: 5.117 min  
 Delta R.T.: -0.002 min  
 Response: 45368967  
 Conc: 11.97 ng/ml



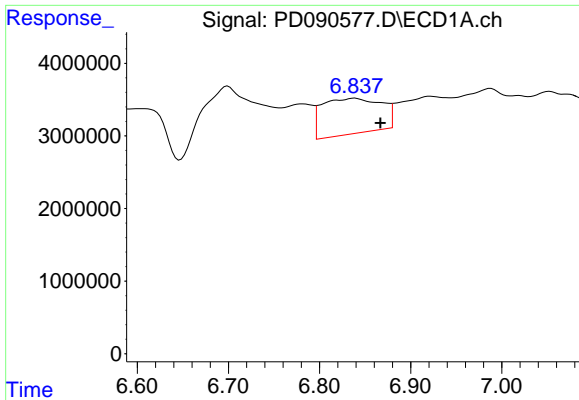
#26 Chlordane-4

R.T.: 6.022 min  
 Delta R.T.: -0.005 min  
 Response: 3084651  
 Conc: 3.02 ng/ml



#26 Chlordane-4

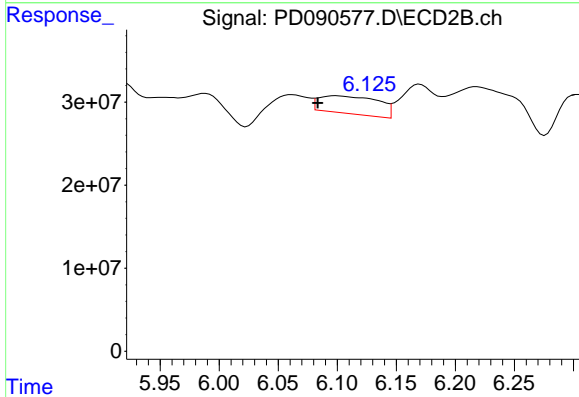
R.T.: 5.182 min  
 Delta R.T.: -0.001 min  
 Response: 114349161  
 Conc: 35.12 ng/ml



#27 Chlordane-5

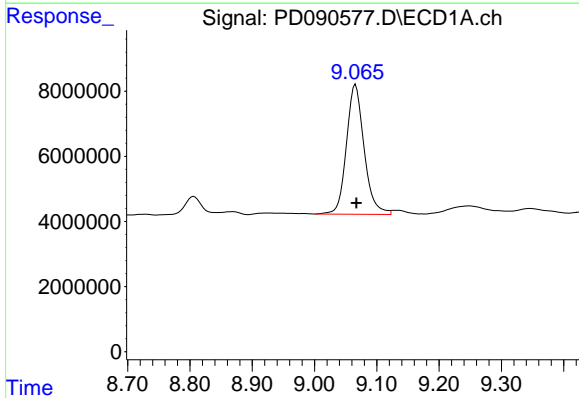
R.T.: 6.839 min  
 Delta R.T.: -0.028 min  
 Response: 22138930  
 Conc: 124.35 ng/ml

Instrument :  
 ECD\_D  
 ClientSampleId :



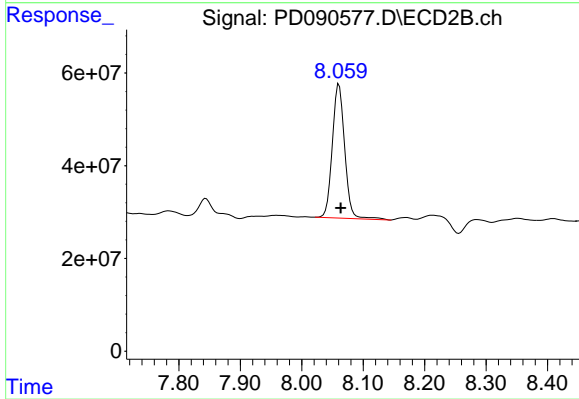
#27 Chlordane-5

R.T.: 6.099 min  
 Delta R.T.: 0.016 min  
 Response: 74177505  
 Conc: 48.88 ng/ml



#28 Decachlorobiphenyl

R.T.: 9.066 min  
 Delta R.T.: -0.002 min  
 Response: 79067407  
 Conc: 16.39 ng/ml



#28 Decachlorobiphenyl

R.T.: 8.061 min  
 Delta R.T.: -0.003 min  
 Response: 405297053  
 Conc: 12.50 ng/ml