

Data Path : Z:\pestpcbsrv\HPCHEM1\ECD\_D\Data\PD101425\  
 Data File : PD090579.D  
 Signal(s) : Signal #1: ECD1A.ch Signal #2: ECD2B.ch  
 Acq On : 14 Oct 2025 12:51  
 Operator : AR\AJ  
 Sample : Q3323-04  
 Misc :  
 ALS Vial : 10 Sample Multiplier: 1

Instrument :  
 ECD\_D  
 ClientSampleId :

Integration File signal 1: autoint1.e  
 Integration File signal 2: autoint2.e  
 Quant Time: Oct 15 07:37:55 2025  
 Quant Method : Z:\pestpcbsrv\HPCHEM1\ECD\_D\Method\PD091825.M  
 Quant Title : GC Extractables  
 QLast Update : Fri Sep 19 05:52:38 2025  
 Response via : Initial Calibration  
 Integrator: ChemStation

Volume Inj. : 1 µl  
 Signal #1 Phase : ZB-MR2 Signal #2 Phase: ZB-MR2  
 Signal #1 Info : 30M x 0.32mm x0.5 Signal #2 Info : 30M x 0.32mm x 0.25µm

	Compound	RT#1	RT#2	Resp#1	Resp#2	ng/ml	ng/ml
-----							
System Monitoring Compounds							
1)	SA Tetrachlo...	3.545	2.875	86904983	729.3E6	26.736	26.568
28)	SA Decachlor...	9.065	8.061	66513588	274.6E6	13.785	8.471 #
Target Compounds							
2)	A alpha-BHC	3.969f	3.375	1175869	5292187	0.168	0.121 #
3)	MA gamma-BHC...	0.000	3.727	0	2927576	N.D.	0.072 #
4)	MA Heptachlor	4.942f	4.097f	2820529	7284069	0.427	0.179 #
5)	MB Aldrin	5.252	4.359	494333	13394144	0.078	0.335 #
6)	B beta-BHC	4.488f	4.043f	3011986	20149835	1.167	1.162
7)	B delta-BHC	4.772	4.267	3282470	-724924	0.508	N.D. #
8)	B Heptachlo...	5.682	4.848f	419625	13441582	0.073	0.365 #
9)	A Endosulfan I	6.095f	5.259f	4291640	34795447	0.795	1.005 #
10)	B gamma-Chl...	5.909f	5.129	-1095401	61506752	N.D.	1.566
11)	B alpha-Chl...	0.000	5.200f	0	73649620	N.D.	1.955 #
12)	B 4,4'-DDE	0.000	5.388f	0	6108687	N.D.	0.160 #
13)	MA Dieldrin	6.365f	5.506	-123912	74264463	N.D.	1.907
14)	MA Endrin	6.563	5.785	1493889	13179504	0.305	0.368
15)	B Endosulfa...	6.778	6.073	1077424	1858543	0.221	0.055 #
16)	A 4,4'-DDD	6.689	5.920	3759996	3878899	0.918	0.120 #
17)	MA 4,4'-DDT	7.047f	6.171	1552255	13414997	0.349	0.390
18)	B Endrin al...	6.934f	6.230f	1553059	13274351	0.453	0.564
19)	B Endosulfa...	0.000	6.487	0	4162581	N.D.	0.127 #
20)	A Methoxychlor	0.000	6.718f	0	2712359	N.D.	0.156 #
21)	B Endrin ke...	7.597f	0.000	5020712	0	1.015	N.D. #
23)	Chlordane-1	4.683f	3.897	1172446	42528480	5.579	35.337 #
25)	Chlordane-3	0.000	5.129	0	61506752	N.D.	16.226 #
26)	Chlordane-4	0.000	5.200	0	73649620	N.D.	22.619 #
27)	Chlordane-5	6.875	6.073	418556	1858543	2.351	1.225 #

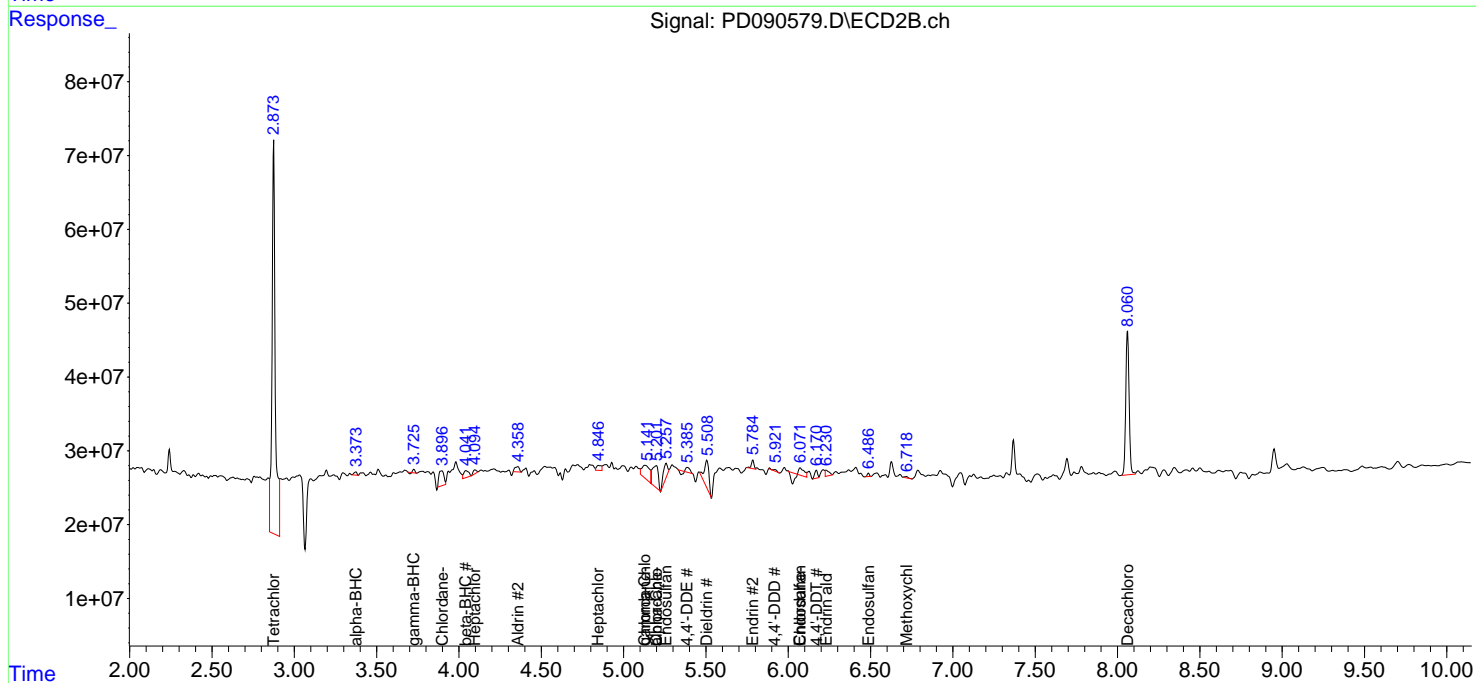
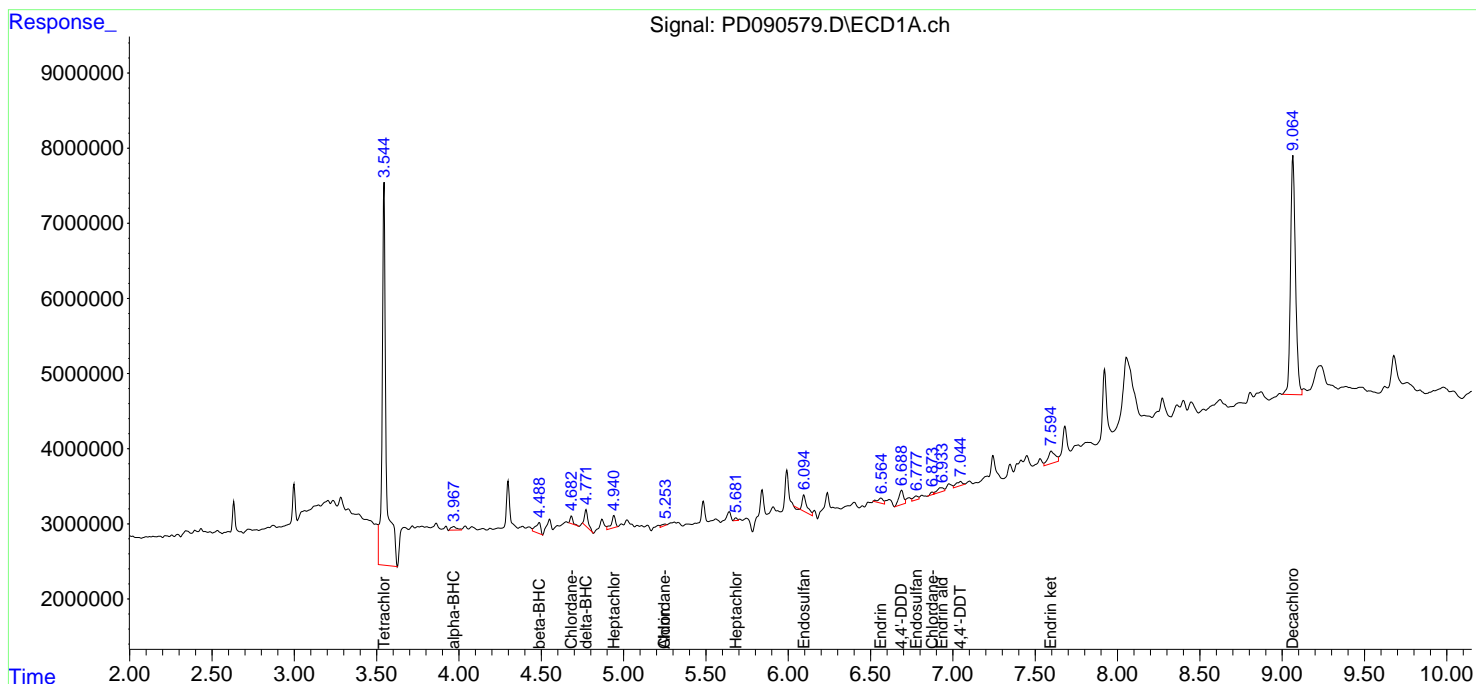
(f)=RT Delta > 1/2 Window (#)=Amounts differ by > 25% (m)=manual int.

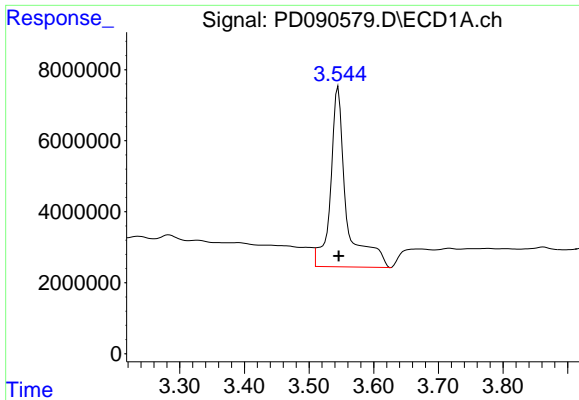
Data Path : Z:\pestpcbsrv\HPCHEM1\ECD\_D\Data\PD101425\  
 Data File : PD090579.D  
 Signal(s) : Signal #1: ECD1A.ch Signal #2: ECD2B.ch  
 Acq On : 14 Oct 2025 12:51  
 Operator : AR\AJ  
 Sample : Q3323-04  
 Misc :  
 ALS Vial : 10 Sample Multiplier: 1

Instrument :  
 ECD\_D  
 ClientSampleId :

Integration File signal 1: autoint1.e  
 Integration File signal 2: autoint2.e  
 Quant Time: Oct 15 07:37:55 2025  
 Quant Method : Z:\pestpcbsrv\HPCHEM1\ECD\_D\Method\PD091825.M  
 Quant Title : GC Extractables  
 QLast Update : Fri Sep 19 05:52:38 2025  
 Response via : Initial Calibration  
 Integrator: ChemStation

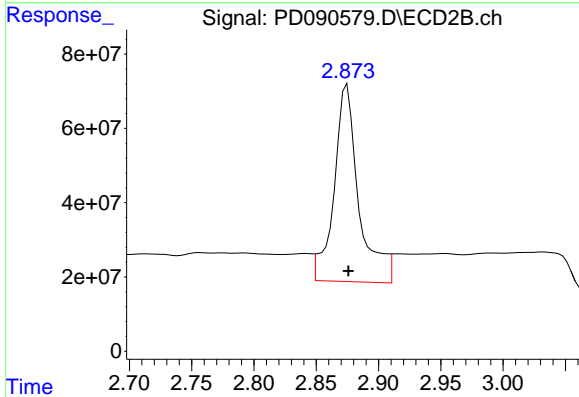
Volume Inj. : 1 µl  
 Signal #1 Phase : ZB-MR1 Signal #2 Phase: ZB-MR2  
 Signal #1 Info : 30M x 0.32mm x0.5 Signal #2 Info : 30M x 0.32mm x 0.25µm



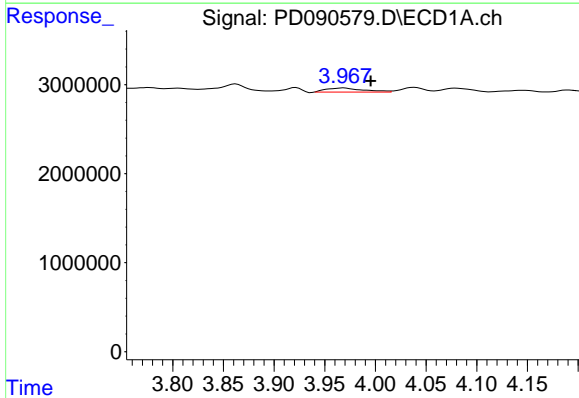


#1 Tetrachloro-m-xylene  
 R.T.: 3.545 min  
 Delta R.T.: 0.000 min  
 Response: 86904983  
 Conc: 26.74 ng/ml

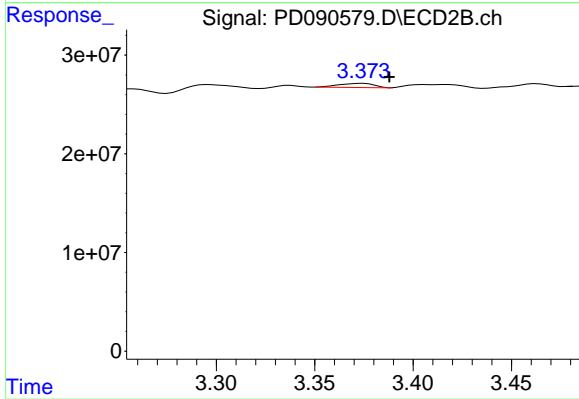
Instrument :  
 ECD\_D  
 ClientSampleId :



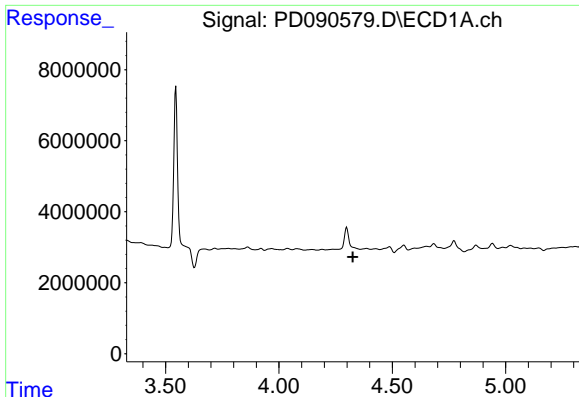
#1 Tetrachloro-m-xylene  
 R.T.: 2.875 min  
 Delta R.T.: -0.001 min  
 Response: 729296966  
 Conc: 26.57 ng/ml



#2 alpha-BHC  
 R.T.: 3.969 min  
 Delta R.T.: -0.027 min  
 Response: 1175869  
 Conc: 0.17 ng/ml



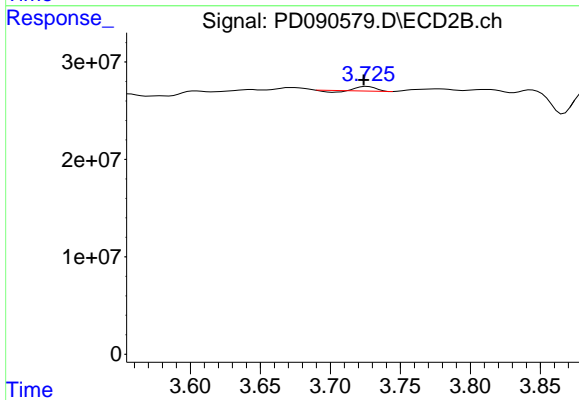
#2 alpha-BHC  
 R.T.: 3.375 min  
 Delta R.T.: -0.013 min  
 Response: 5292187  
 Conc: 0.12 ng/ml



#3 gamma-BHC (Lindane)

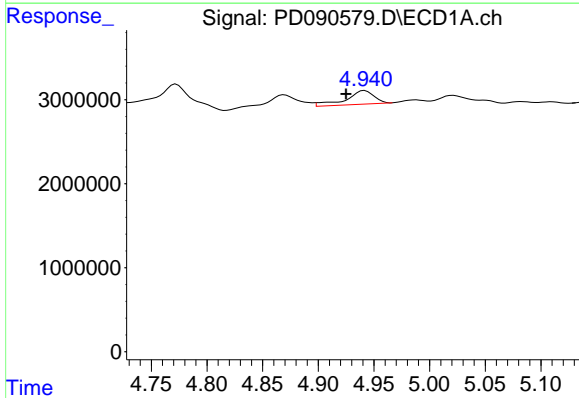
R.T.: 0.000 min  
 Exp R.T.: 4.326 min  
 Response: 0  
 Conc: N.D.

Instrument :  
 ECD\_D  
 ClientSampleId :



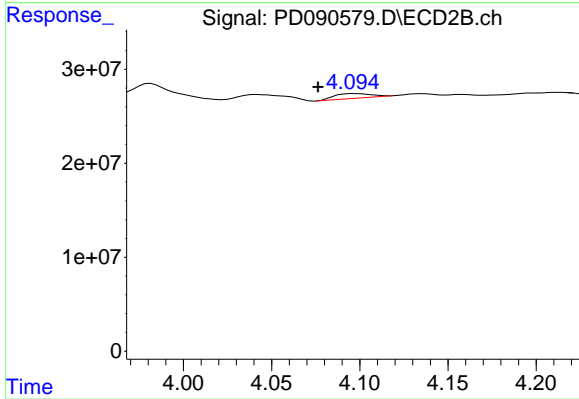
#3 gamma-BHC (Lindane)

R.T.: 3.727 min  
 Delta R.T.: 0.003 min  
 Response: 2927576  
 Conc: 0.07 ng/ml



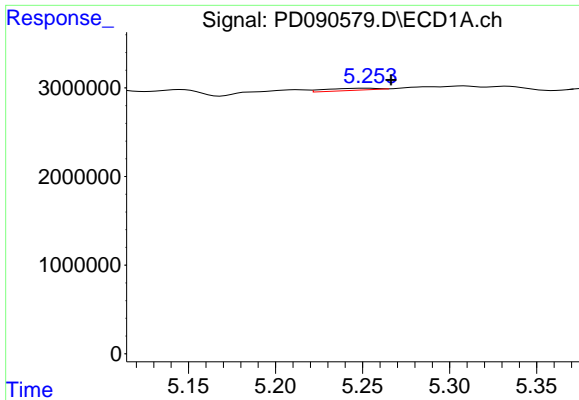
#4 Heptachlor

R.T.: 4.942 min  
 Delta R.T.: 0.017 min  
 Response: 2820529  
 Conc: 0.43 ng/ml



#4 Heptachlor

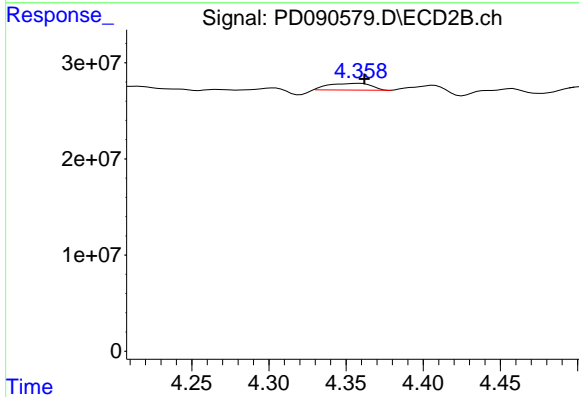
R.T.: 4.097 min  
 Delta R.T.: 0.021 min  
 Response: 7284069  
 Conc: 0.18 ng/ml



#5 Aldrin

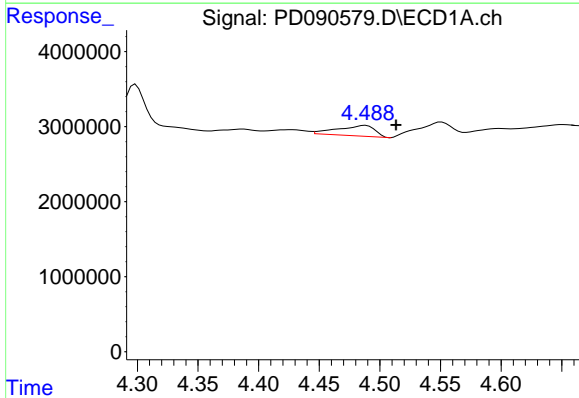
R.T.: 5.252 min  
 Delta R.T.: -0.015 min  
 Response: 494333  
 Conc: 0.08 ng/ml

Instrument :  
 ECD\_D  
 ClientSampleId :



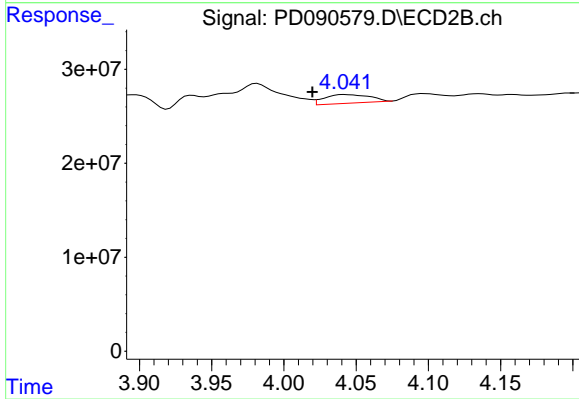
#5 Aldrin

R.T.: 4.359 min  
 Delta R.T.: -0.003 min  
 Response: 13394144  
 Conc: 0.34 ng/ml



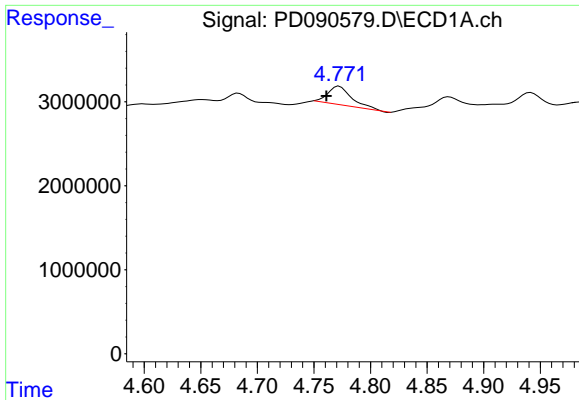
#6 beta-BHC

R.T.: 4.488 min  
 Delta R.T.: -0.025 min  
 Response: 3011986  
 Conc: 1.17 ng/ml



#6 beta-BHC

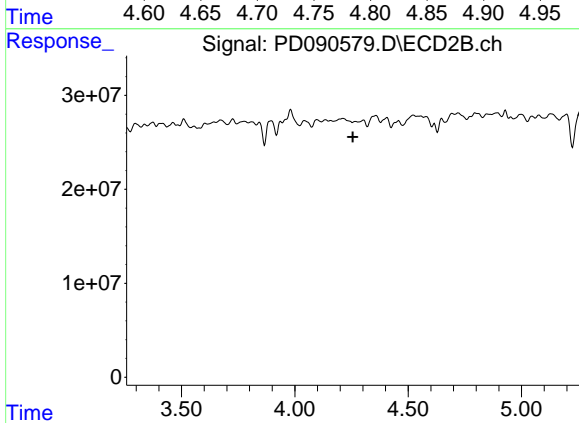
R.T.: 4.043 min  
 Delta R.T.: 0.023 min  
 Response: 20149835  
 Conc: 1.16 ng/ml



#7 delta-BHC

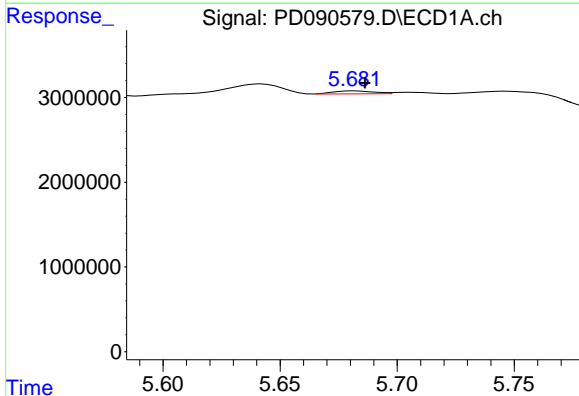
R.T.: 4.772 min  
 Delta R.T.: 0.011 min  
 Response: 3282470  
 Conc: 0.51 ng/ml

Instrument :  
 ECD\_D  
 ClientSampleId :



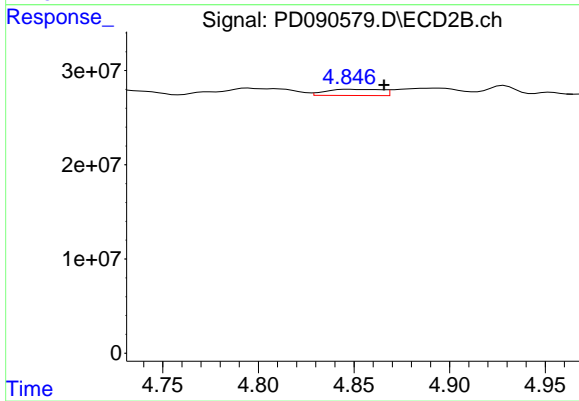
#7 delta-BHC

R.T.: 4.267 min  
 Delta R.T.: 0.011 min  
 Response: -724924  
 Conc: N.D.



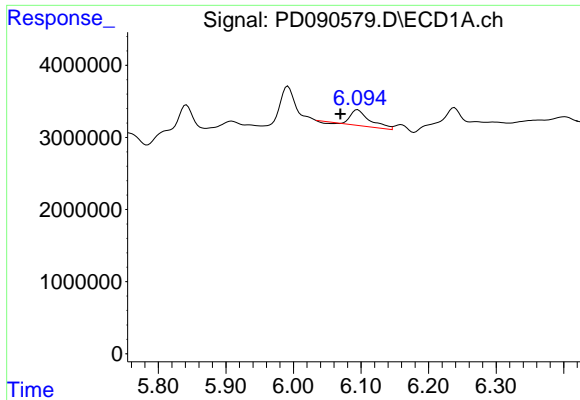
#8 Heptachlor epoxide

R.T.: 5.682 min  
 Delta R.T.: -0.004 min  
 Response: 419625  
 Conc: 0.07 ng/ml



#8 Heptachlor epoxide

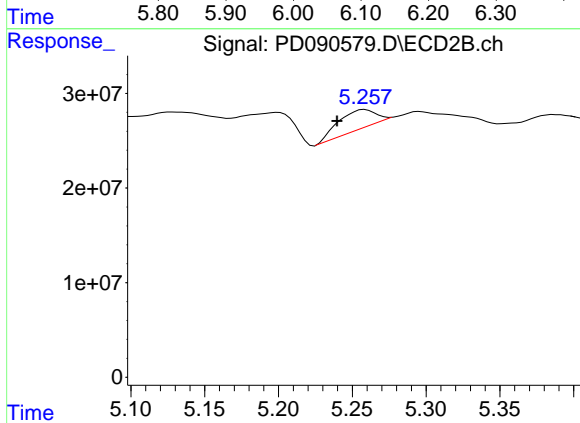
R.T.: 4.848 min  
 Delta R.T.: -0.018 min  
 Response: 13441582  
 Conc: 0.36 ng/ml



#9 Endosulfan I

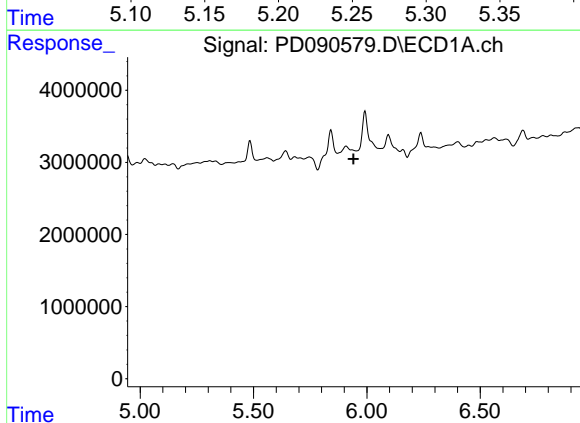
R.T.: 6.095 min  
 Delta R.T.: 0.025 min  
 Response: 4291640  
 Conc: 0.79 ng/ml

Instrument :  
 ECD\_D  
 ClientSampleId :



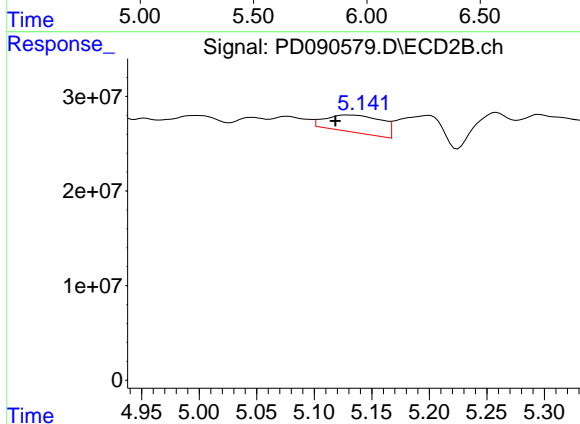
#9 Endosulfan I

R.T.: 5.259 min  
 Delta R.T.: 0.019 min  
 Response: 34795447  
 Conc: 1.01 ng/ml



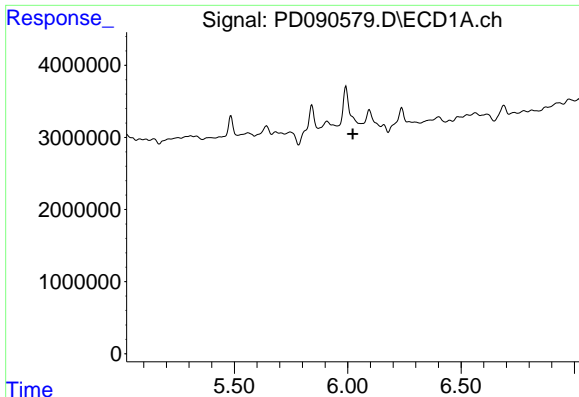
#10 gamma-Chlordane

R.T.: 5.909 min  
 Delta R.T.: -0.033 min  
 Response: -1095401  
 Conc: N.D.



#10 gamma-Chlordane

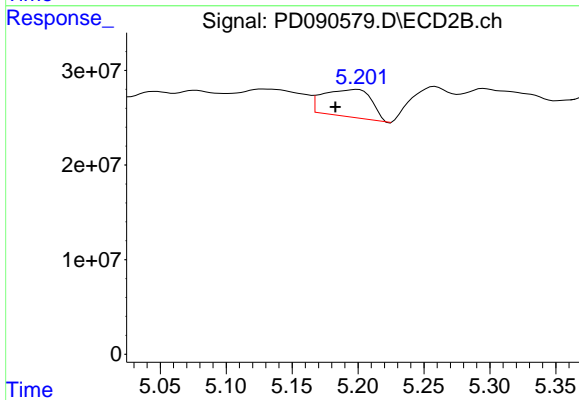
R.T.: 5.129 min  
 Delta R.T.: 0.011 min  
 Response: 61506752  
 Conc: 1.57 ng/ml



#11 alpha-Chlordane

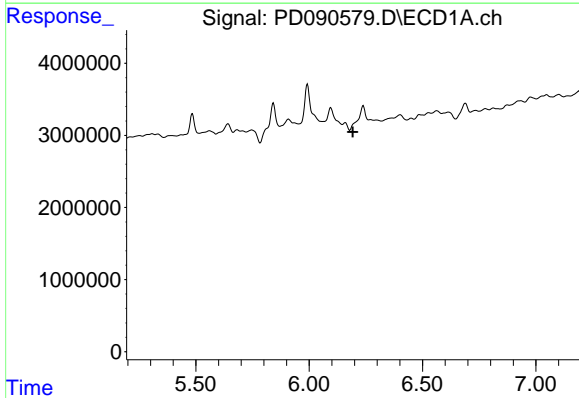
R.T.: 0.000 min  
 Exp R.T. : 6.022 min  
 Response: 0  
 Conc: N.D.

Instrument :  
 ECD\_D  
 ClientSampleId :



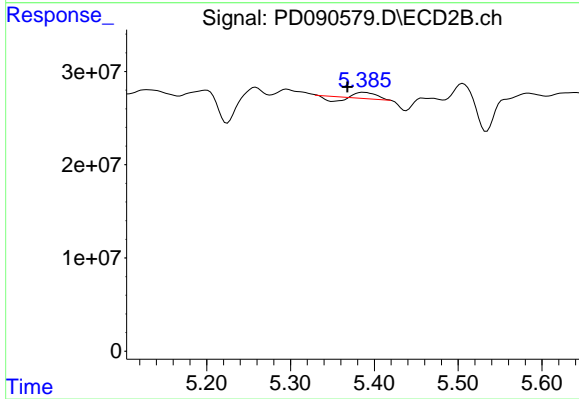
#11 alpha-Chlordane

R.T.: 5.200 min  
 Delta R.T.: 0.017 min  
 Response: 73649620  
 Conc: 1.96 ng/ml



#12 4,4'-DDE

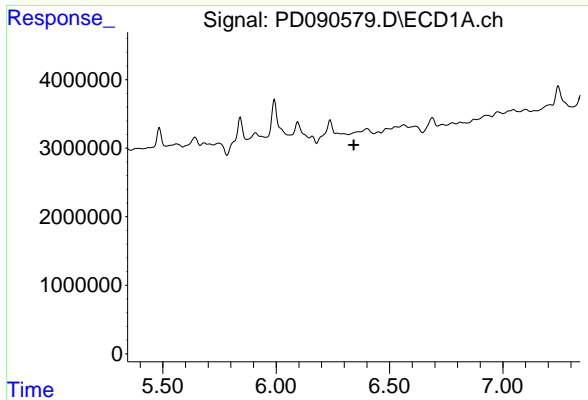
R.T.: 0.000 min  
 Exp R.T. : 6.192 min  
 Response: 0  
 Conc: N.D.



#12 4,4'-DDE

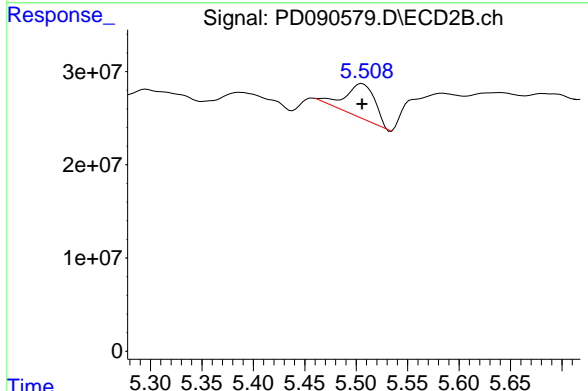
R.T.: 5.388 min  
 Delta R.T.: 0.020 min  
 Response: 6108687  
 Conc: 0.16 ng/ml



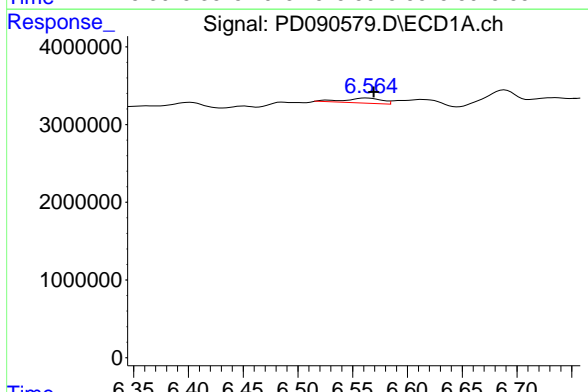


#13 Dieldrin  
 R.T.: 6.365 min  
 Delta R.T.: 0.022 min  
 Response: -123912  
 Conc: N.D.

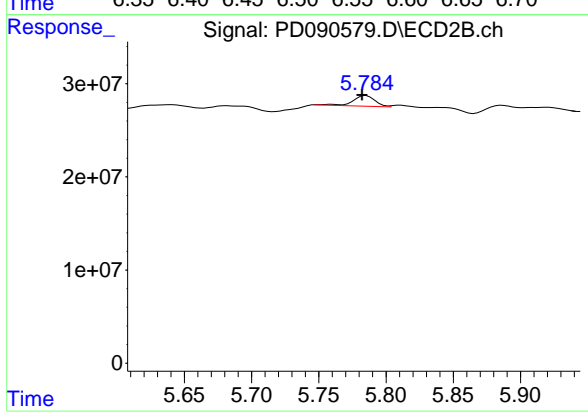
Instrument :  
 ECD\_D  
 ClientSampleId :



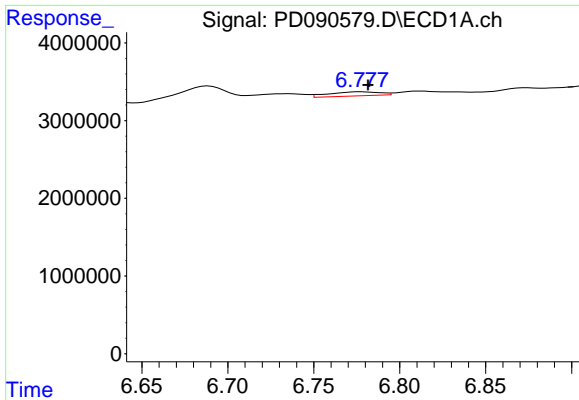
#13 Dieldrin  
 R.T.: 5.506 min  
 Delta R.T.: 0.000 min  
 Response: 74264463  
 Conc: 1.91 ng/ml



#14 Endrin  
 R.T.: 6.563 min  
 Delta R.T.: -0.006 min  
 Response: 1493889  
 Conc: 0.31 ng/ml



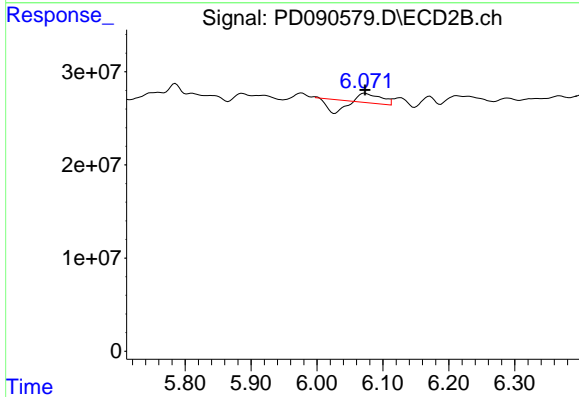
#14 Endrin  
 R.T.: 5.785 min  
 Delta R.T.: 0.003 min  
 Response: 13179504  
 Conc: 0.37 ng/ml



#15 Endosulfan II

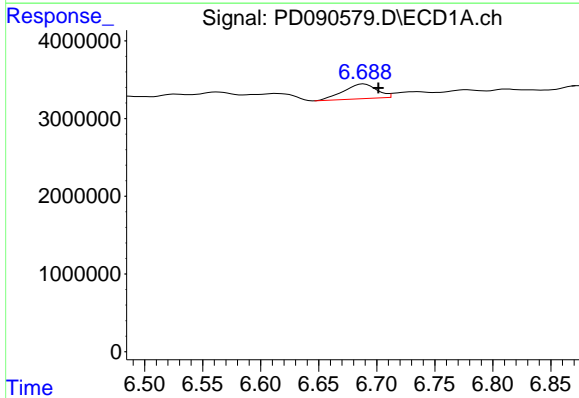
R.T.: 6.778 min  
 Delta R.T.: -0.004 min  
 Response: 1077424  
 Conc: 0.22 ng/ml

Instrument :  
 ECD\_D  
 ClientSampleId :



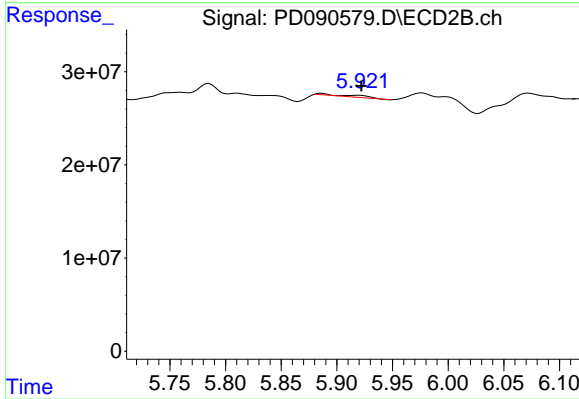
#15 Endosulfan II

R.T.: 6.073 min  
 Delta R.T.: 0.000 min  
 Response: 1858543  
 Conc: 0.06 ng/ml



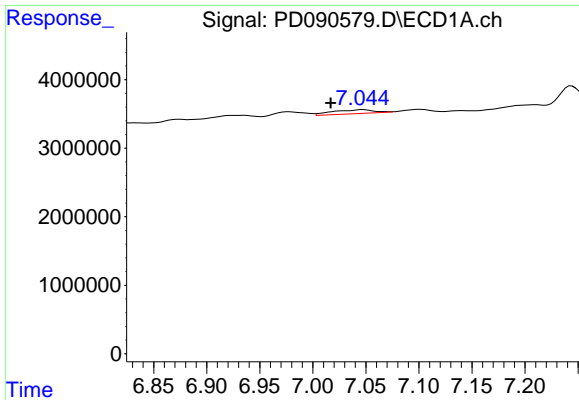
#16 4,4'-DDD

R.T.: 6.689 min  
 Delta R.T.: -0.012 min  
 Response: 3759996  
 Conc: 0.92 ng/ml



#16 4,4'-DDD

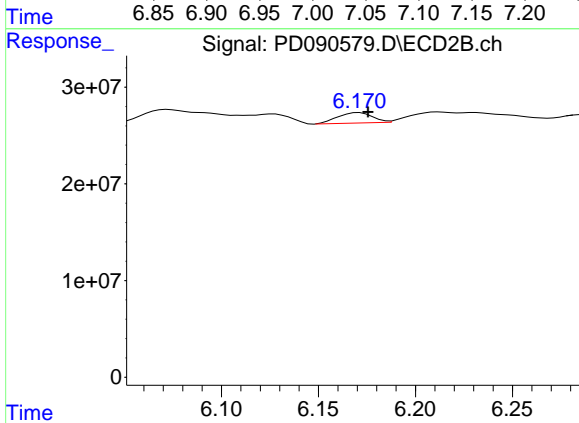
R.T.: 5.920 min  
 Delta R.T.: -0.003 min  
 Response: 3878899  
 Conc: 0.12 ng/ml



#17 4,4'-DDT

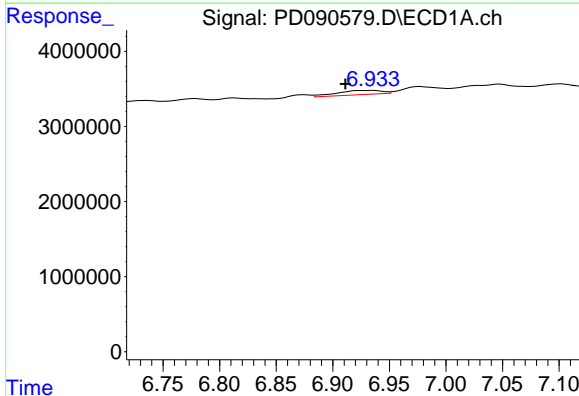
R.T.: 7.047 min  
 Delta R.T.: 0.030 min  
 Response: 1552255  
 Conc: 0.35 ng/ml

Instrument :  
 ECD\_D  
 ClientSampleId :



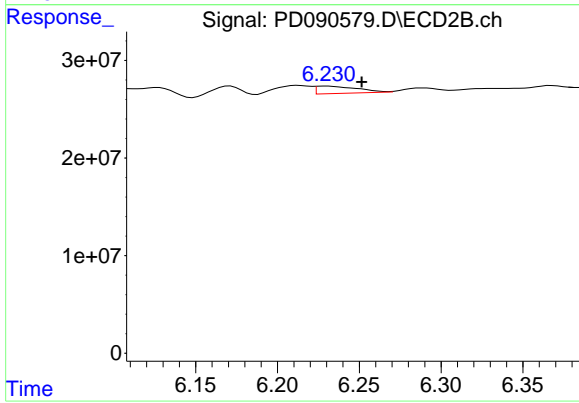
#17 4,4'-DDT

R.T.: 6.171 min  
 Delta R.T.: -0.005 min  
 Response: 13414997  
 Conc: 0.39 ng/ml



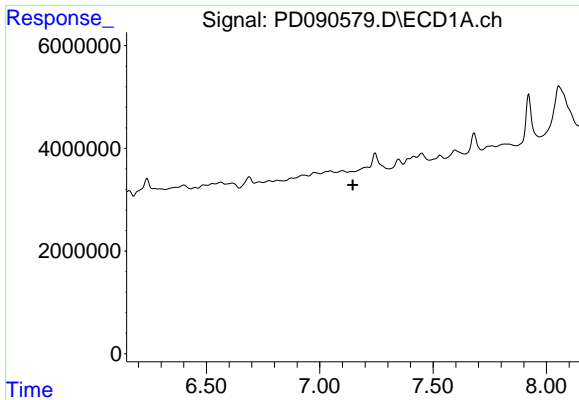
#18 Endrin aldehyde

R.T.: 6.934 min  
 Delta R.T.: 0.023 min  
 Response: 1553059  
 Conc: 0.45 ng/ml



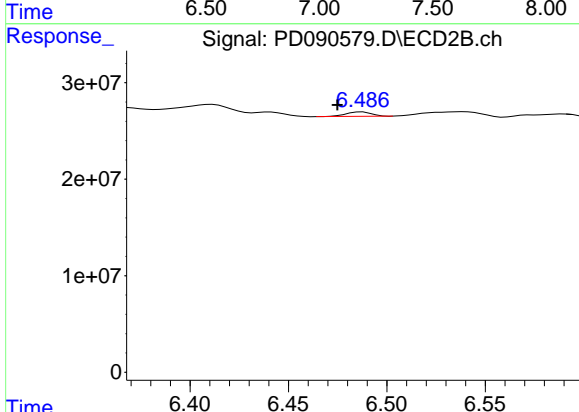
#18 Endrin aldehyde

R.T.: 6.230 min  
 Delta R.T.: -0.021 min  
 Response: 13274351  
 Conc: 0.56 ng/ml

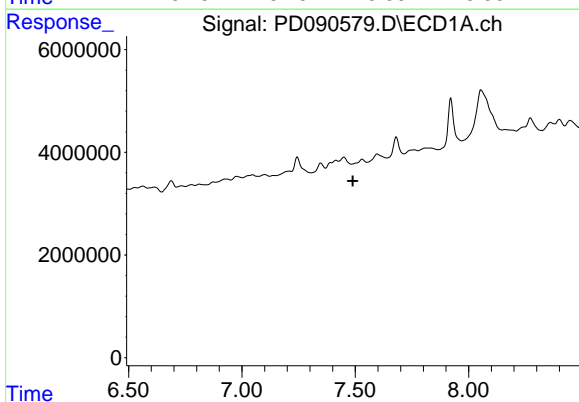


#19 Endosulfan Sulfate  
 R.T.: 0.000 min  
 Exp R.T.: 7.146 min  
 Response: 0  
 Conc: N.D.

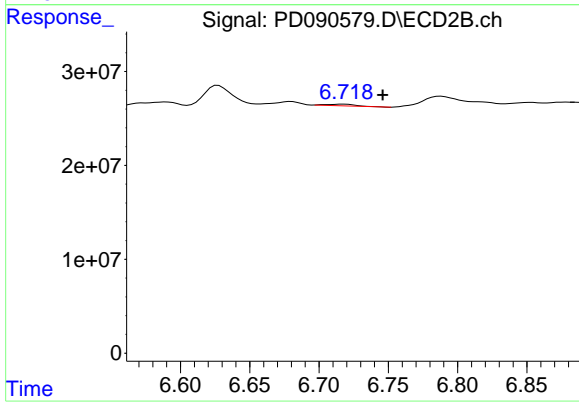
Instrument :  
 ECD\_D  
 ClientSampleId :



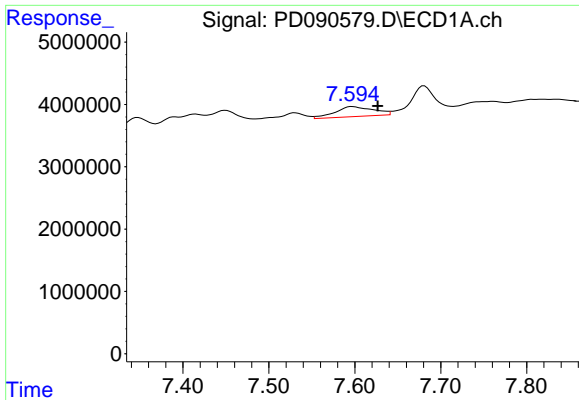
#19 Endosulfan Sulfate  
 R.T.: 6.487 min  
 Delta R.T.: 0.012 min  
 Response: 4162581  
 Conc: 0.13 ng/ml



#20 Methoxychlor  
 R.T.: 0.000 min  
 Exp R.T.: 7.490 min  
 Response: 0  
 Conc: N.D.



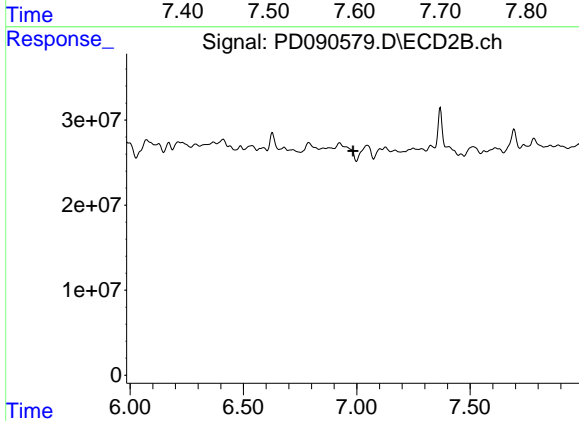
#20 Methoxychlor  
 R.T.: 6.718 min  
 Delta R.T.: -0.028 min  
 Response: 2712359  
 Conc: 0.16 ng/ml



#21 Endrin ketone

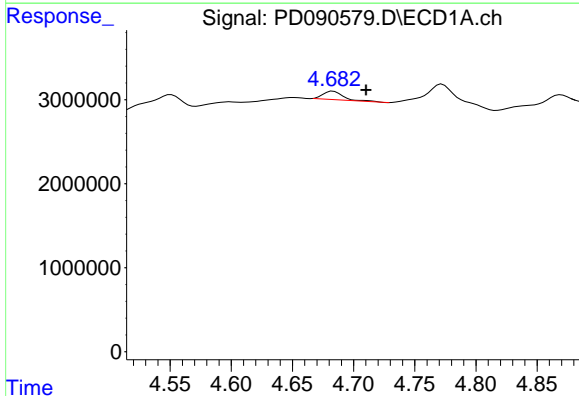
R.T.: 7.597 min  
 Delta R.T.: -0.029 min  
 Response: 5020712  
 Conc: 1.01 ng/ml

Instrument :  
 ECD\_D  
 ClientSampleId :



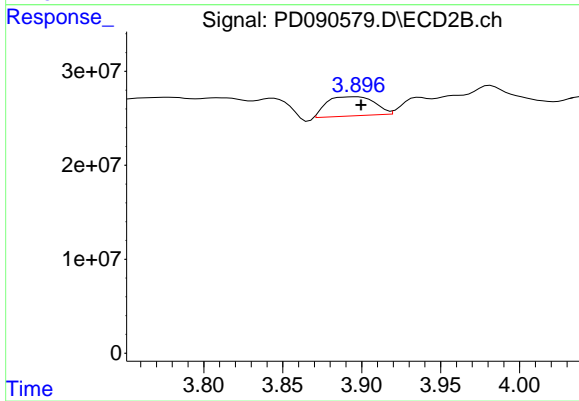
#21 Endrin ketone

R.T.: 0.000 min  
 Exp R.T. : 6.984 min  
 Response: 0  
 Conc: N.D.



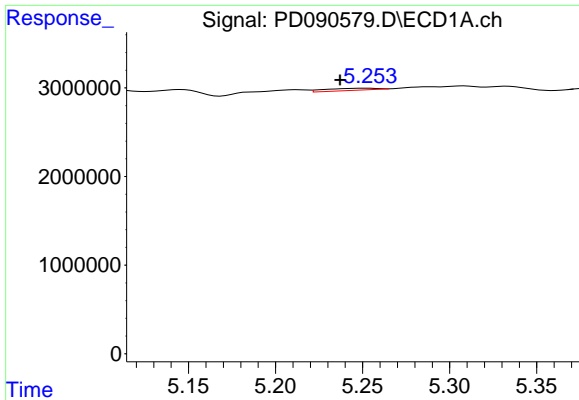
#23 Chlordane-1

R.T.: 4.683 min  
 Delta R.T.: -0.027 min  
 Response: 1172446  
 Conc: 5.58 ng/ml



#23 Chlordane-1

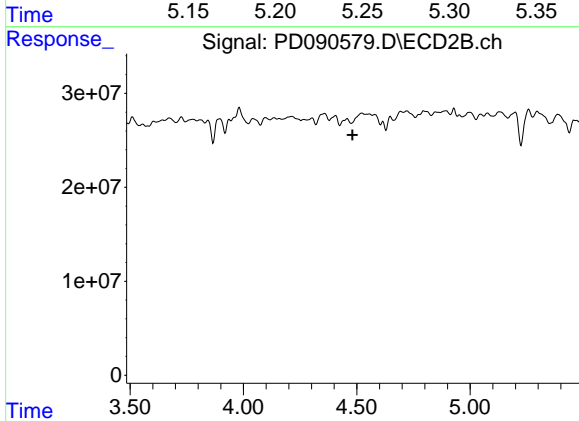
R.T.: 3.897 min  
 Delta R.T.: -0.002 min  
 Response: 42528480  
 Conc: 35.34 ng/ml



#24 Chlordane-2

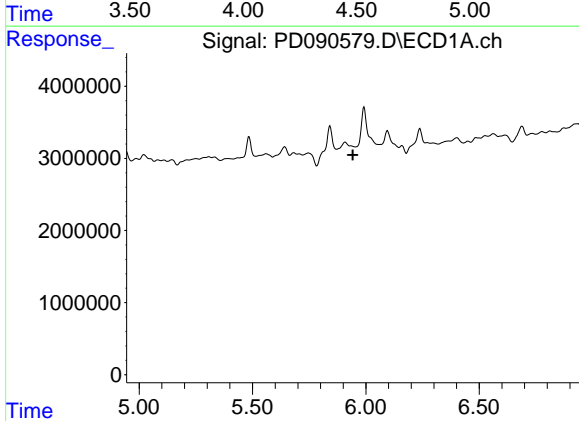
R.T.: 5.252 min  
 Delta R.T.: 0.015 min  
 Response: 494333  
 Conc: 2.30 ng/ml

Instrument :  
 ECD\_D  
 ClientSampleId :



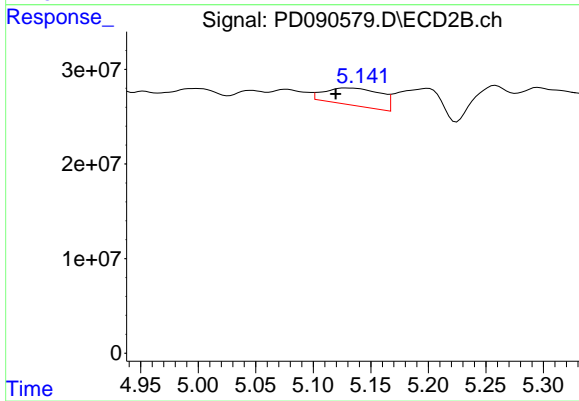
#24 Chlordane-2

R.T.: 4.458 min  
 Delta R.T.: -0.023 min  
 Response: -6427762  
 Conc: N.D.



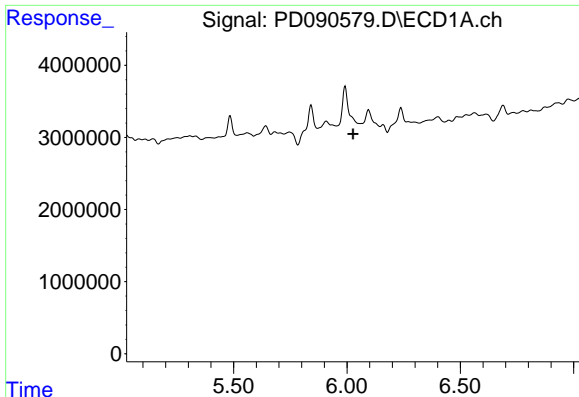
#25 Chlordane-3

R.T.: 0.000 min  
 Exp R.T. : 5.942 min  
 Response: 0  
 Conc: N.D.



#25 Chlordane-3

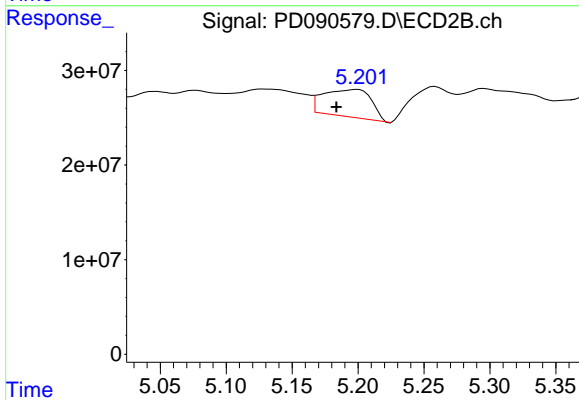
R.T.: 5.129 min  
 Delta R.T.: 0.009 min  
 Response: 61506752  
 Conc: 16.23 ng/ml



#26 Chlordane-4

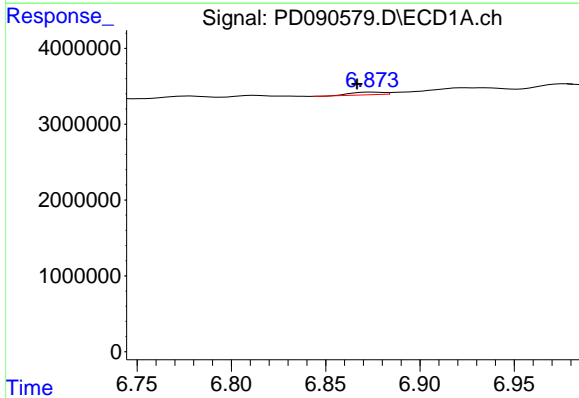
R.T.: 0.000 min  
 Exp R.T.: 6.027 min  
 Response: 0  
 Conc: N.D.

Instrument :  
 ECD\_D  
 ClientSampleId :



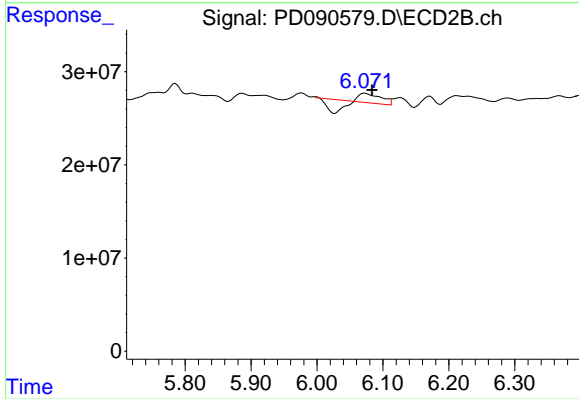
#26 Chlordane-4

R.T.: 5.200 min  
 Delta R.T.: 0.016 min  
 Response: 73649620  
 Conc: 22.62 ng/ml



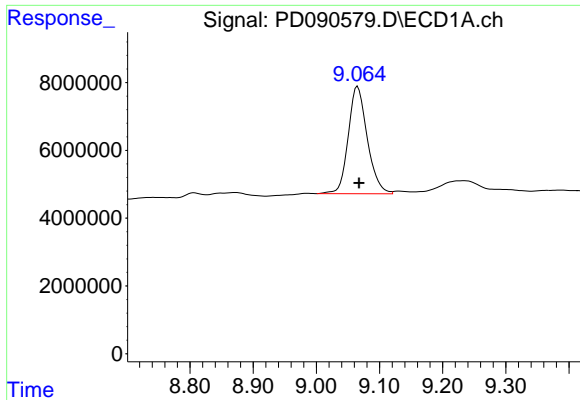
#27 Chlordane-5

R.T.: 6.875 min  
 Delta R.T.: 0.008 min  
 Response: 418556  
 Conc: 2.35 ng/ml



#27 Chlordane-5

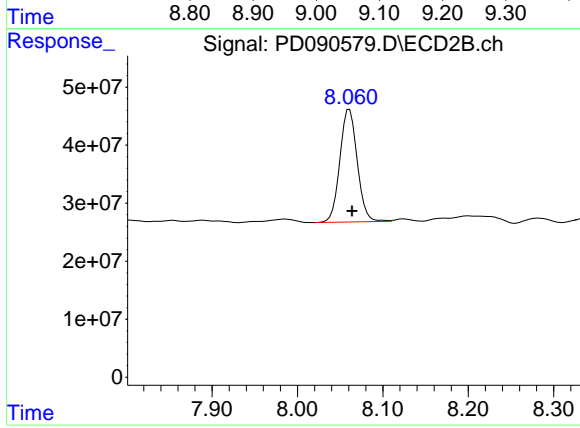
R.T.: 6.073 min  
 Delta R.T.: -0.011 min  
 Response: 1858543  
 Conc: 1.22 ng/ml



#28 Decachlorobiphenyl

R.T.: 9.065 min  
Delta R.T.: -0.002 min  
Response: 66513588  
Conc: 13.79 ng/ml

Instrument :  
ECD\_D  
ClientSampleId :



#28 Decachlorobiphenyl

R.T.: 8.061 min  
Delta R.T.: -0.003 min  
Response: 274594235  
Conc: 8.47 ng/ml