

Data Path : Z:\pestpcbsrv\HPCHEM1\ECD_D\Data\PD101425\
 Data File : PD090580.D
 Signal(s) : Signal #1: ECD1A.ch Signal #2: ECD2B.ch
 Acq On : 14 Oct 2025 13:04
 Operator : AR\AJ
 Sample : Q3323-05
 Misc :
 ALS Vial : 11 Sample Multiplier: 1

Instrument :
 ECD_D
 ClientSampleId :

Integration File signal 1: autoint1.e
 Integration File signal 2: autoint2.e
 Quant Time: Oct 15 07:38:13 2025
 Quant Method : Z:\pestpcbsrv\HPCHEM1\ECD_D\Method\PD091825.M
 Quant Title : GC Extractables
 QLast Update : Fri Sep 19 05:52:38 2025
 Response via : Initial Calibration
 Integrator: ChemStation

Volume Inj. : 1 µl
 Signal #1 Phase : ZB-MR2 Signal #2 Phase: ZB-MR2
 Signal #1 Info : 30M x 0.32mm x0.5 Signal #2 Info : 30M x 0.32mm x 0.25µm

	Compound	RT#1	RT#2	Resp#1	Resp#2	ng/ml	ng/ml

System Monitoring Compounds							
1)	SA Tetrachlo...	3.545	2.875	36736767	451.9E6	11.302	16.464 #
28)	SA Decachlor...	9.066	8.062	46828239	244.9E6	9.705	7.555
Target Compounds							
2)	A alpha-BHC	0.000	3.403f	0	7891979	N.D.	0.180 #
3)	MA gamma-BHC...	4.335	3.715	1348428	6480289	0.204	0.159
4)	MA Heptachlor	4.947f	4.092f	2956264	13587916	0.447	0.334 #
5)	MB Aldrin	5.256	4.357	3533404	31471077	0.556	0.788 #
6)	B beta-BHC	4.545f	4.049f	7843296	76926282	3.040	4.438 #
7)	B delta-BHC	4.773	4.268	1865075	9619754	0.289	0.233
8)	Heptachlo...	5.678	4.862	5304384	21042561	0.928	0.571 #
9)	A Endosulfan I	6.100f	0.000	6046365	0	1.119	N.D. #
10)	B gamma-Chl...	5.939	5.120	283734	64053231	0.050	1.630 #
11)	B alpha-Chl...	6.019	5.182	2727204	189.4E6	0.473	5.027 #
12)	B 4,4'-DDE	6.196	5.366	3268938	79713488	0.628	2.082 #
13)	MA Dieldrin	6.345	5.504	-547581	129.6E6	N.D.	3.327
14)	MA Endrin	6.568	5.787	8649612	608.3E6	1.767	16.976 #
15)	B Endosulfa...	6.791	6.065	16930307	-34541481	3.471	N.D. #
16)	A 4,4'-DDD	6.700	5.919	31644214	15211798	7.722	0.469 #
17)	MA 4,4'-DDT	6.991f	6.170	25821343	18493992	5.799	0.538 #
19)	B Endosulfa...	7.138	6.469	665320	4550036	0.145	0.139
20)	A Methoxychlor	0.000	6.722f	0	6174321	N.D.	0.355 #
21)	B Endrin ke...	7.613	0.000	6084467	0	1.230	N.D. #
23)	Chlordane-1	4.716	3.894	413121	148.9E6	1.966	123.762 #
24)	Chlordane-2	5.256	4.455f	3533404	26221888	16.465	20.970 #
25)	Chlordane-3	5.939	5.120	283734	64053231	0.339	16.898 #
26)	Chlordane-4	6.019	5.182	2727204	189.4E6	2.672	58.154 #
27)	Chlordane-5	6.838f	6.098	9391917	14357902	52.753	9.461 #

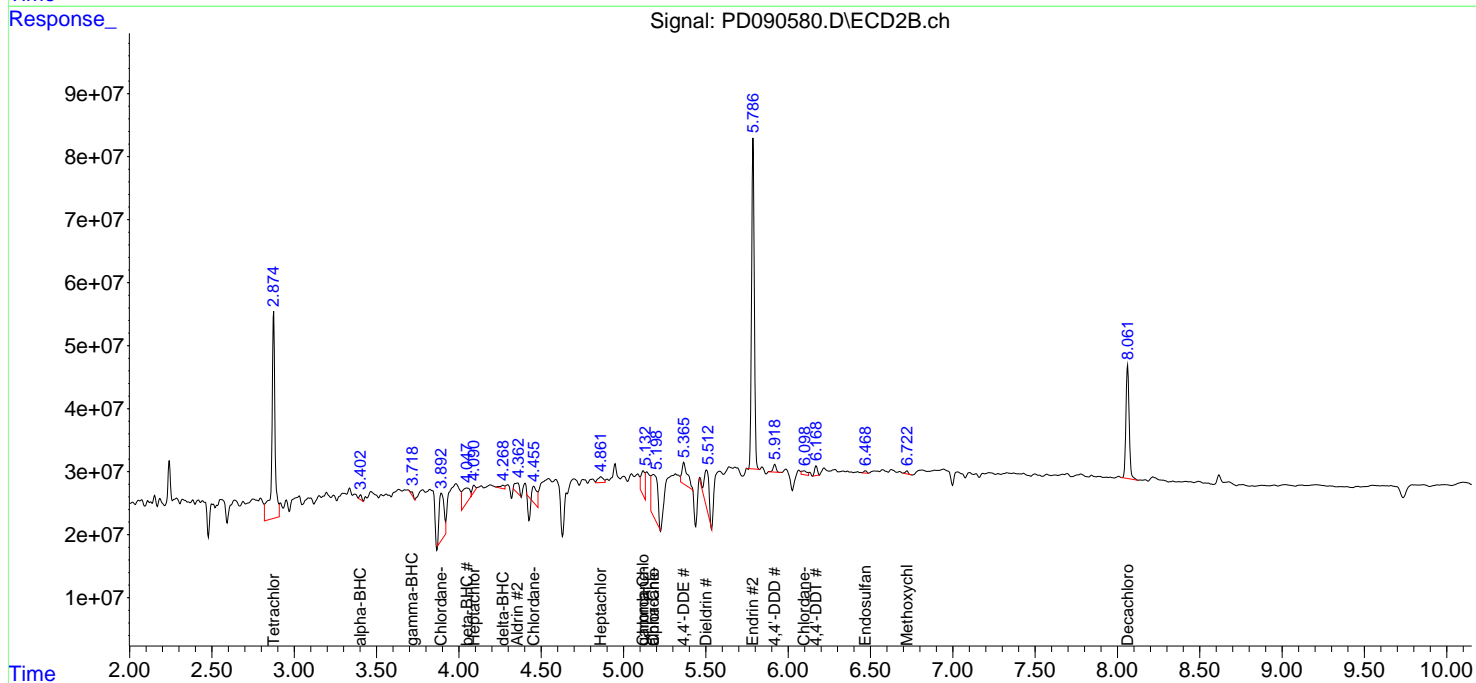
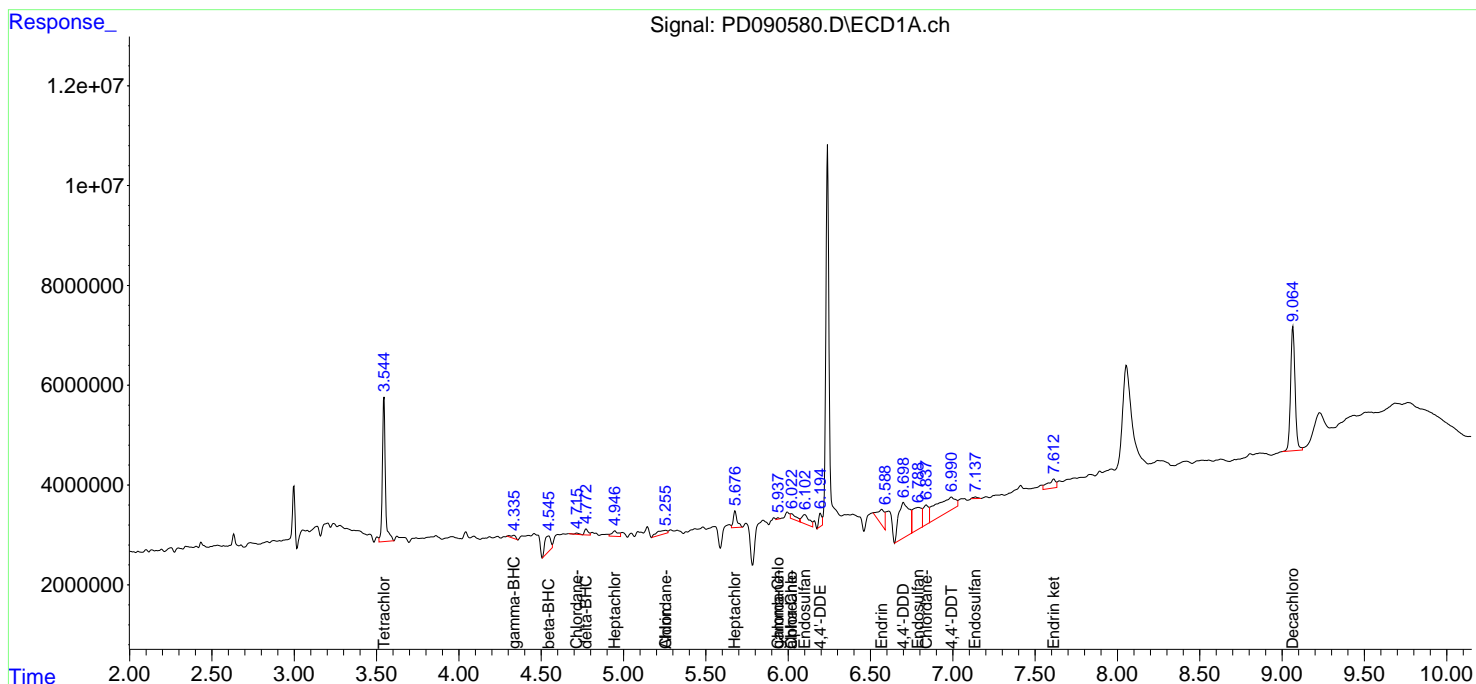
(f)=RT Delta > 1/2 Window (#)=Amounts differ by > 25% (m)=manual int.

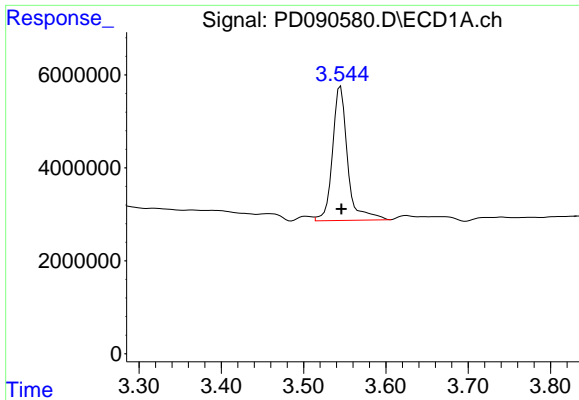
Data Path : Z:\pestpcbsrv\HPCHEM1\ECD_D\Data\PD101425\
 Data File : PD090580.D
 Signal(s) : Signal #1: ECD1A.ch Signal #2: ECD2B.ch
 Acq On : 14 Oct 2025 13:04
 Operator : AR\AJ
 Sample : Q3323-05
 Misc :
 ALS Vial : 11 Sample Multiplier: 1

Instrument :
 ECD_D
 ClientSampleId :

Integration File signal 1: autoint1.e
 Integration File signal 2: autoint2.e
 Quant Time: Oct 15 07:38:13 2025
 Quant Method : Z:\pestpcbsrv\HPCHEM1\ECD_D\Method\PD091825.M
 Quant Title : GC Extractables
 QLast Update : Fri Sep 19 05:52:38 2025
 Response via : Initial Calibration
 Integrator: ChemStation

Volume Inj. : 1 µl
 Signal #1 Phase : ZB-MR1 Signal #2 Phase: ZB-MR2
 Signal #1 Info : 30M x 0.32mm x0.5 Signal #2 Info : 30M x 0.32mm x 0.25µm

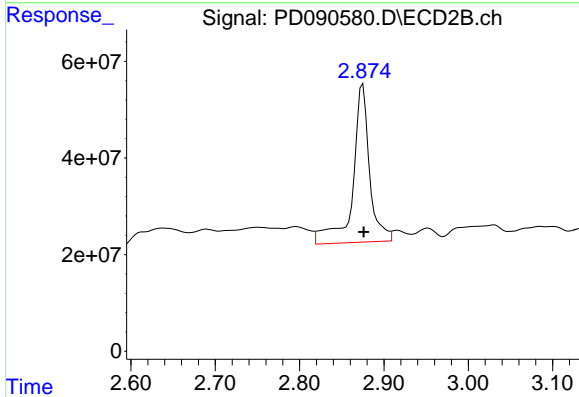




#1 Tetrachloro-m-xylene

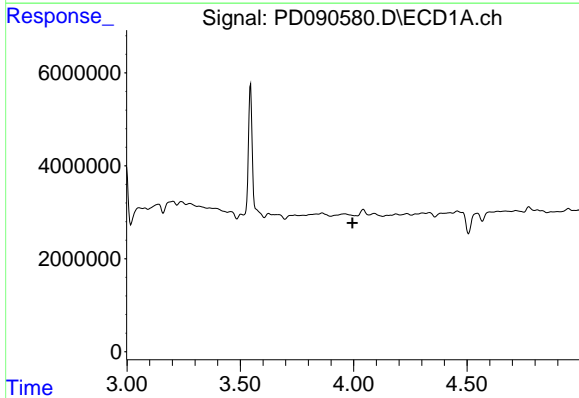
R.T.: 3.545 min
 Delta R.T.: 0.000 min
 Response: 36736767
 Conc: 11.30 ng/ml

Instrument :
 ECD_D
 ClientSampleId :



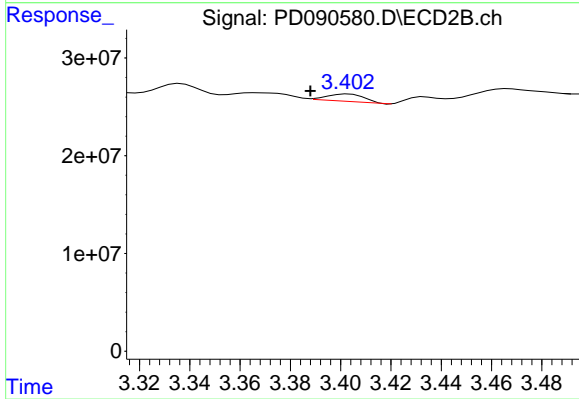
#1 Tetrachloro-m-xylene

R.T.: 2.875 min
 Delta R.T.: 0.000 min
 Response: 451932001
 Conc: 16.46 ng/ml



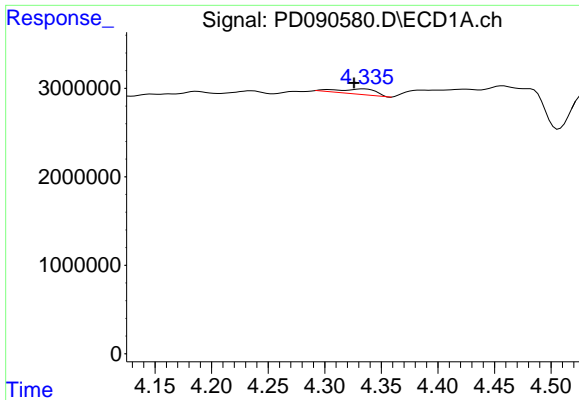
#2 alpha-BHC

R.T.: 0.000 min
 Exp R.T. : 3.995 min
 Response: 0
 Conc: N.D.



#2 alpha-BHC

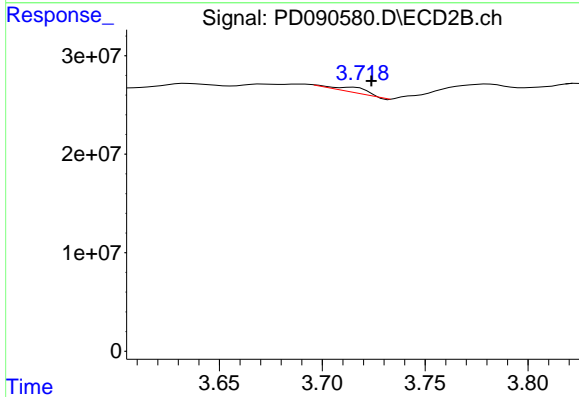
R.T.: 3.403 min
 Delta R.T.: 0.015 min
 Response: 7891979
 Conc: 0.18 ng/ml



#3 gamma-BHC (Lindane)

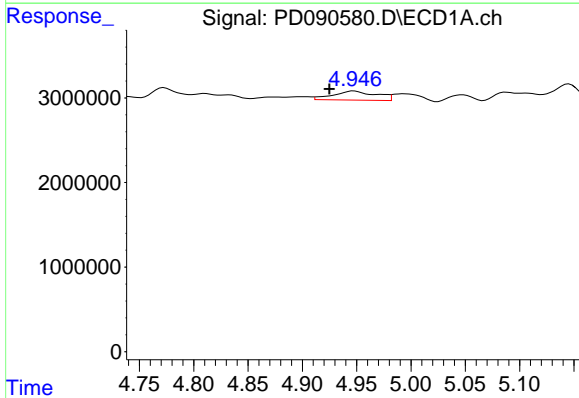
R.T.: 4.335 min
 Delta R.T.: 0.009 min
 Response: 1348428
 Conc: 0.20 ng/ml

Instrument :
 ECD_D
 ClientSampleId :



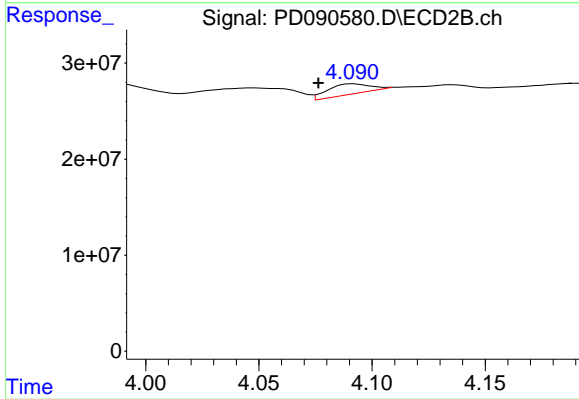
#3 gamma-BHC (Lindane)

R.T.: 3.715 min
 Delta R.T.: -0.009 min
 Response: 6480289
 Conc: 0.16 ng/ml



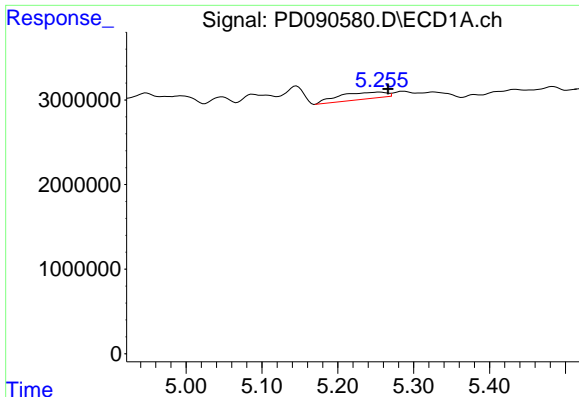
#4 Heptachlor

R.T.: 4.947 min
 Delta R.T.: 0.022 min
 Response: 2956264
 Conc: 0.45 ng/ml



#4 Heptachlor

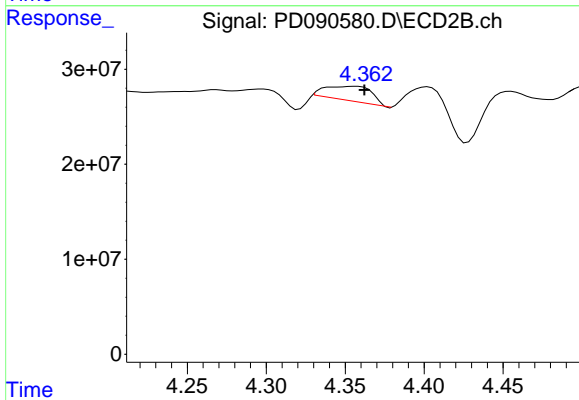
R.T.: 4.092 min
 Delta R.T.: 0.016 min
 Response: 13587916
 Conc: 0.33 ng/ml



#5 Aldrin

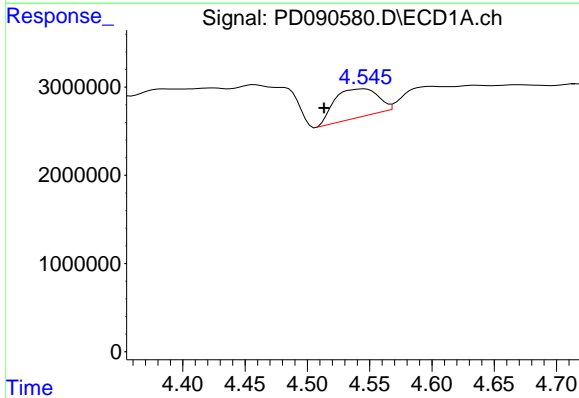
R.T.: 5.256 min
 Delta R.T.: -0.011 min
 Response: 3533404
 Conc: 0.56 ng/ml

Instrument :
 ECD_D
 ClientSampleId :



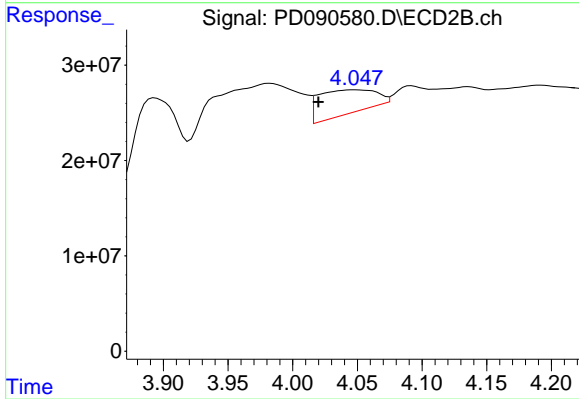
#5 Aldrin

R.T.: 4.357 min
 Delta R.T.: -0.005 min
 Response: 31471077
 Conc: 0.79 ng/ml



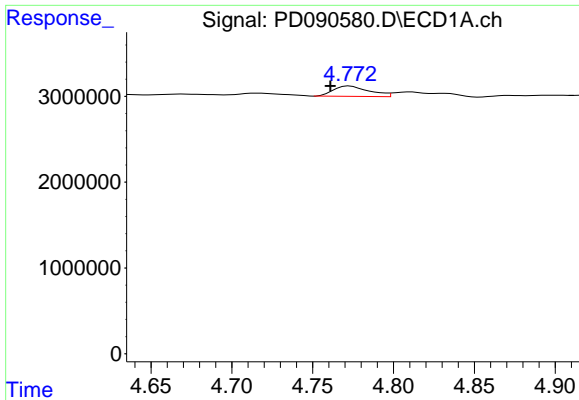
#6 beta-BHC

R.T.: 4.545 min
 Delta R.T.: 0.032 min
 Response: 7843296
 Conc: 3.04 ng/ml



#6 beta-BHC

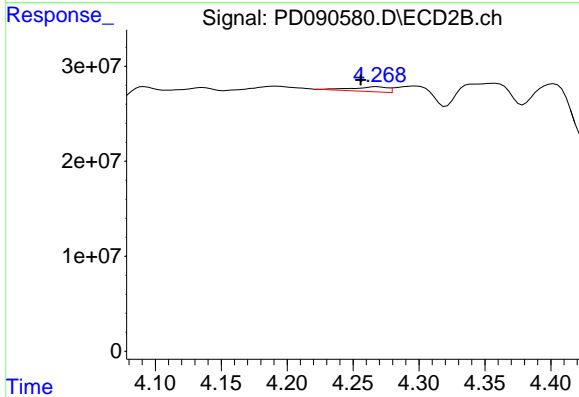
R.T.: 4.049 min
 Delta R.T.: 0.029 min
 Response: 76926282
 Conc: 4.44 ng/ml



#7 delta-BHC

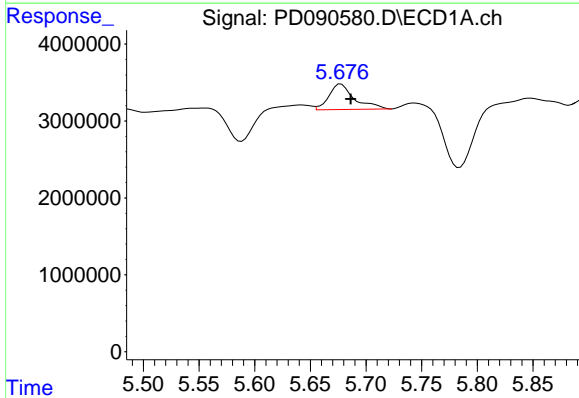
R.T.: 4.773 min
 Delta R.T.: 0.012 min
 Response: 1865075
 Conc: 0.29 ng/ml

Instrument :
 ECD_D
 ClientSampleId :



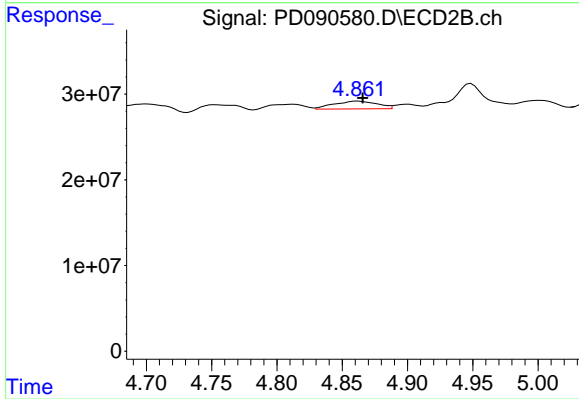
#7 delta-BHC

R.T.: 4.268 min
 Delta R.T.: 0.012 min
 Response: 9619754
 Conc: 0.23 ng/ml



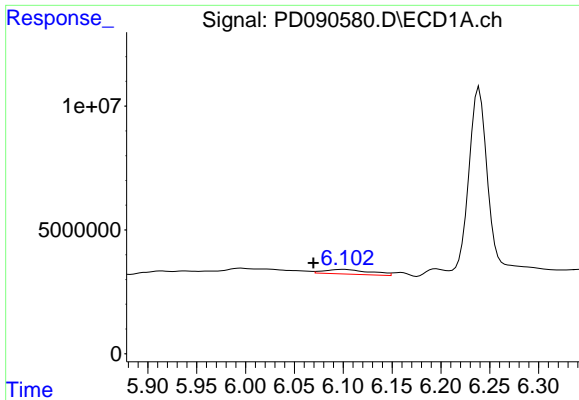
#8 Heptachlor epoxide

R.T.: 5.678 min
 Delta R.T.: -0.009 min
 Response: 5304384
 Conc: 0.93 ng/ml



#8 Heptachlor epoxide

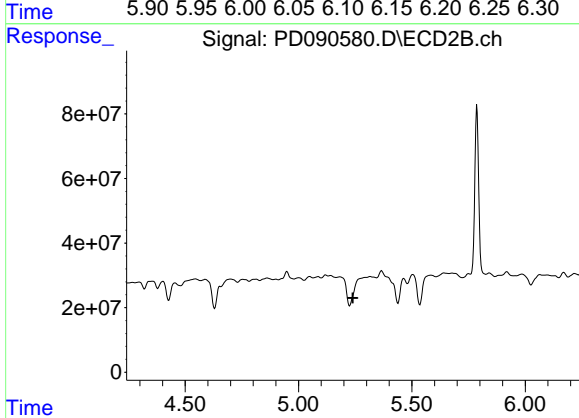
R.T.: 4.862 min
 Delta R.T.: -0.004 min
 Response: 21042561
 Conc: 0.57 ng/ml



#9 Endosulfan I

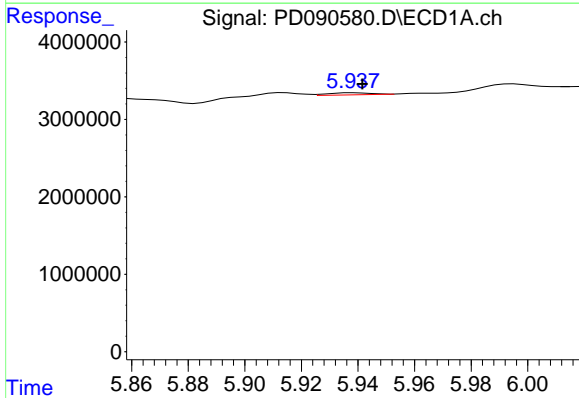
R.T.: 6.100 min
 Delta R.T.: 0.031 min
 Response: 6046365
 Conc: 1.12 ng/ml

Instrument :
 ECD_D
 ClientSampleId :



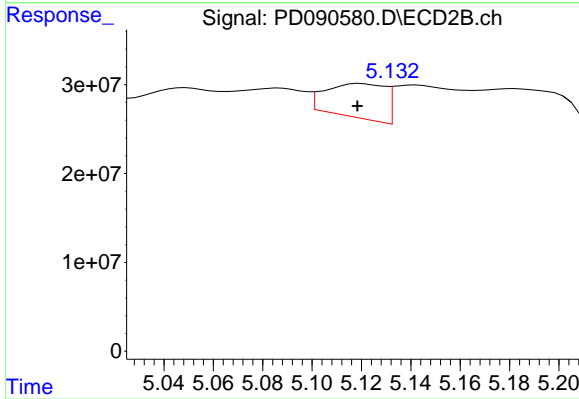
#9 Endosulfan I

R.T.: 0.000 min
 Exp R.T. : 5.240 min
 Response: 0
 Conc: N.D.



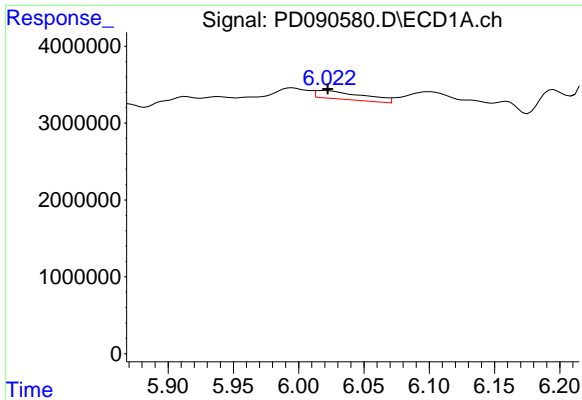
#10 gamma-Chlordane

R.T.: 5.939 min
 Delta R.T.: -0.003 min
 Response: 283734
 Conc: 0.05 ng/ml



#10 gamma-Chlordane

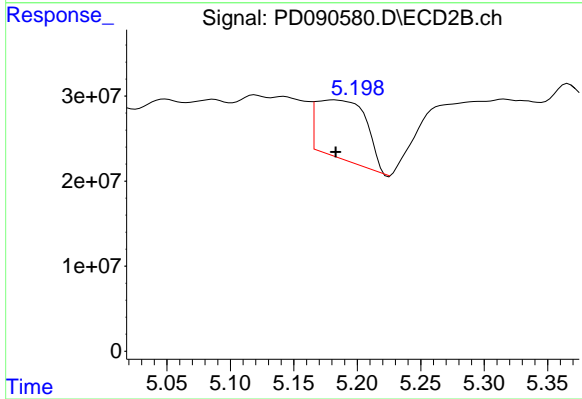
R.T.: 5.120 min
 Delta R.T.: 0.001 min
 Response: 64053231
 Conc: 1.63 ng/ml



#11 alpha-Chlordane

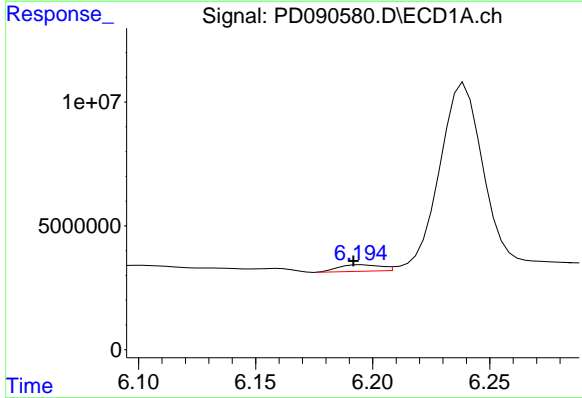
R.T.: 6.019 min
 Delta R.T.: -0.003 min
 Response: 2727204
 Conc: 0.47 ng/ml

Instrument :
 ECD_D
 ClientSampleId :



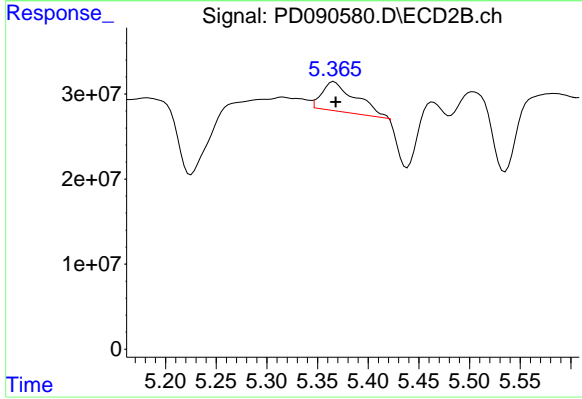
#11 alpha-Chlordane

R.T.: 5.182 min
 Delta R.T.: 0.000 min
 Response: 189350750
 Conc: 5.03 ng/ml



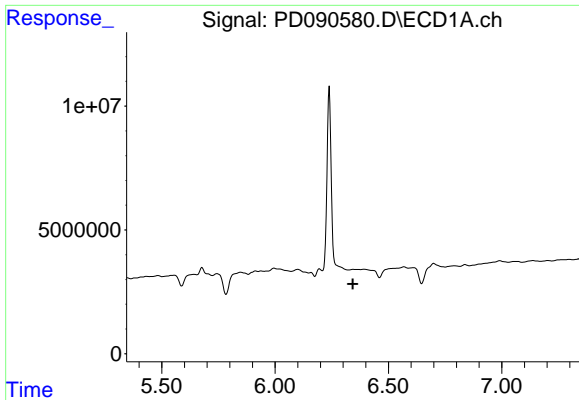
#12 4,4'-DDE

R.T.: 6.196 min
 Delta R.T.: 0.004 min
 Response: 3268938
 Conc: 0.63 ng/ml



#12 4,4'-DDE

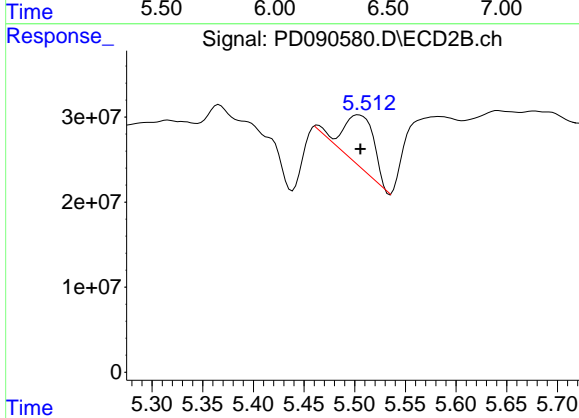
R.T.: 5.366 min
 Delta R.T.: -0.001 min
 Response: 79713488
 Conc: 2.08 ng/ml



#13 Dieldrin

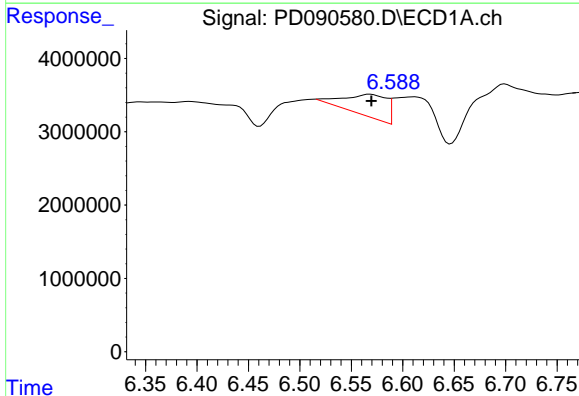
R.T.: 6.345 min
 Delta R.T.: 0.002 min
 Response: -547581
 Conc: N.D.

Instrument :
 ECD_D
 ClientSampleId :



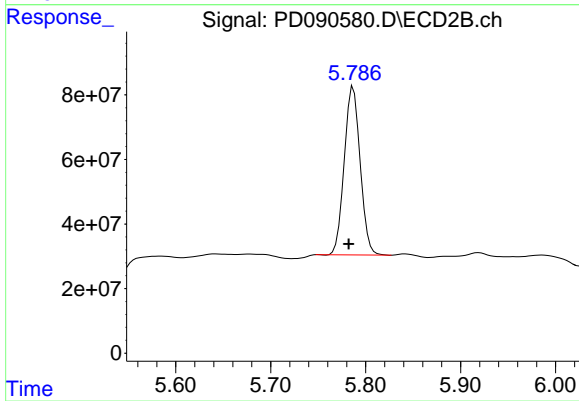
#13 Dieldrin

R.T.: 5.504 min
 Delta R.T.: -0.002 min
 Response: 129579538
 Conc: 3.33 ng/ml



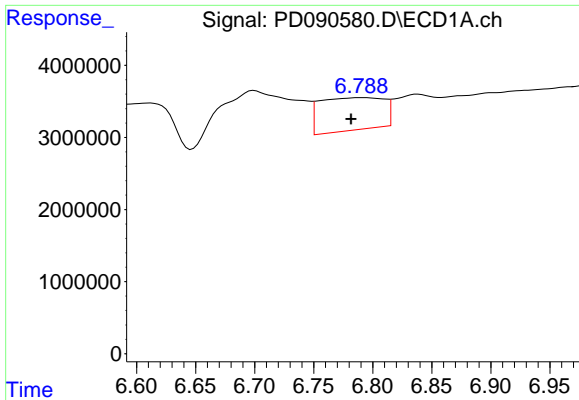
#14 Endrin

R.T.: 6.568 min
 Delta R.T.: -0.001 min
 Response: 8649612
 Conc: 1.77 ng/ml



#14 Endrin

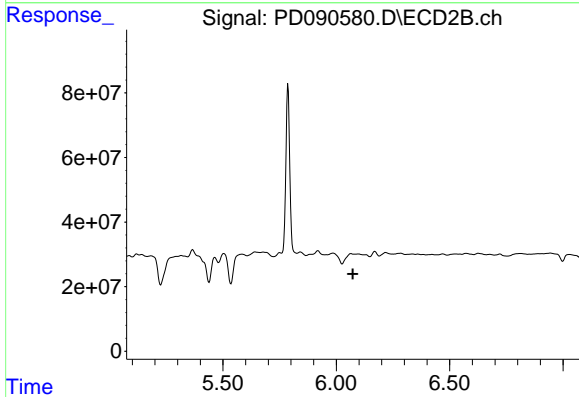
R.T.: 5.787 min
 Delta R.T.: 0.005 min
 Response: 608297494
 Conc: 16.98 ng/ml



#15 Endosulfan II

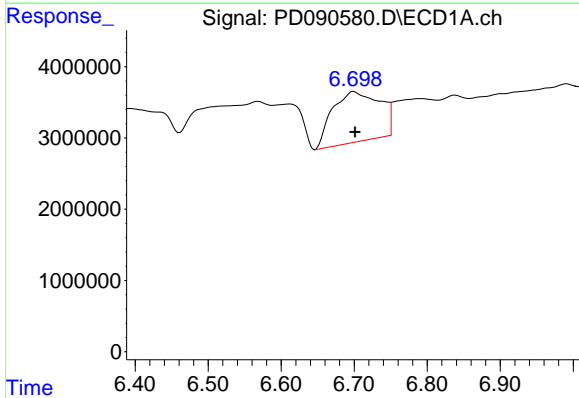
R.T.: 6.791 min
Delta R.T.: 0.009 min
Response: 16930307
Conc: 3.47 ng/ml

Instrument :
ECD_D
ClientSampleId :



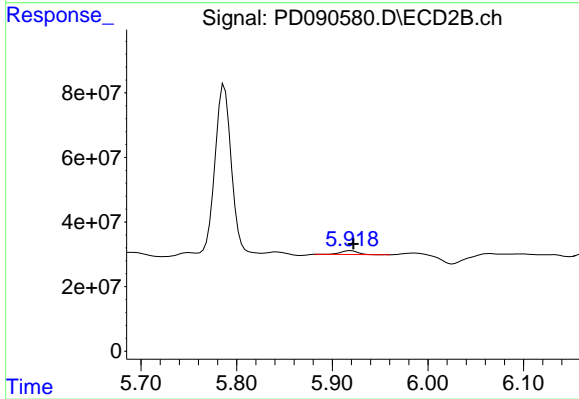
#15 Endosulfan II

R.T.: 6.065 min
Delta R.T.: -0.008 min
Response: -34541481
Conc: N.D.



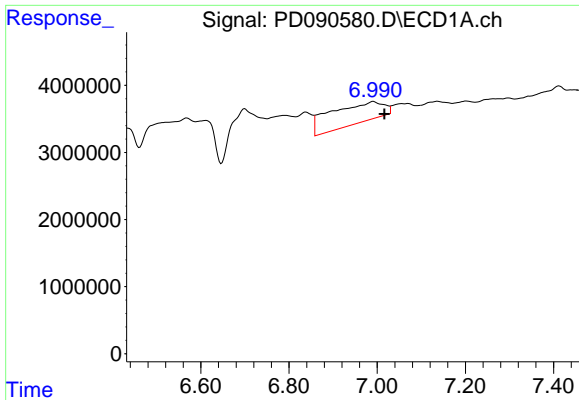
#16 4,4'-DDD

R.T.: 6.700 min
Delta R.T.: -0.002 min
Response: 31644214
Conc: 7.72 ng/ml



#16 4,4'-DDD

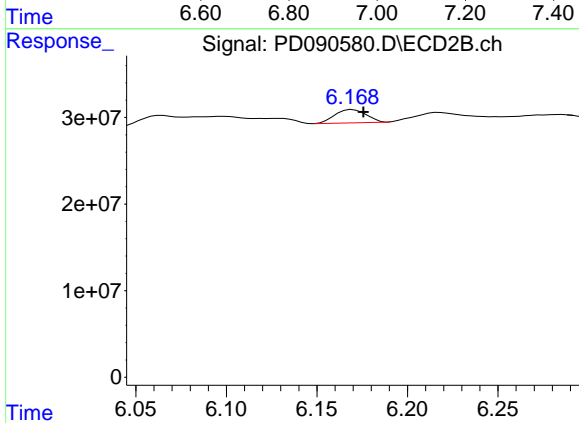
R.T.: 5.919 min
Delta R.T.: -0.003 min
Response: 15211798
Conc: 0.47 ng/ml



#17 4,4'-DDT

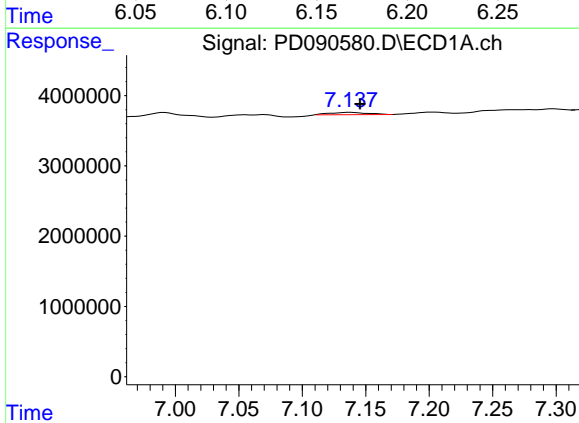
R.T.: 6.991 min
 Delta R.T.: -0.026 min
 Response: 25821343
 Conc: 5.80 ng/ml

Instrument :
 ECD_D
 ClientSampleId :



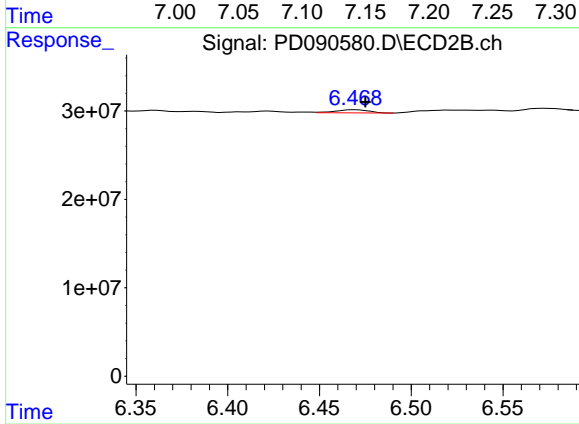
#17 4,4'-DDT

R.T.: 6.170 min
 Delta R.T.: -0.006 min
 Response: 18493992
 Conc: 0.54 ng/ml



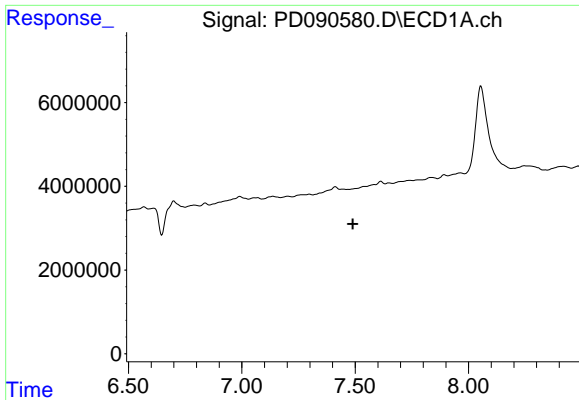
#19 Endosulfan Sulfate

R.T.: 7.138 min
 Delta R.T.: -0.008 min
 Response: 665320
 Conc: 0.14 ng/ml



#19 Endosulfan Sulfate

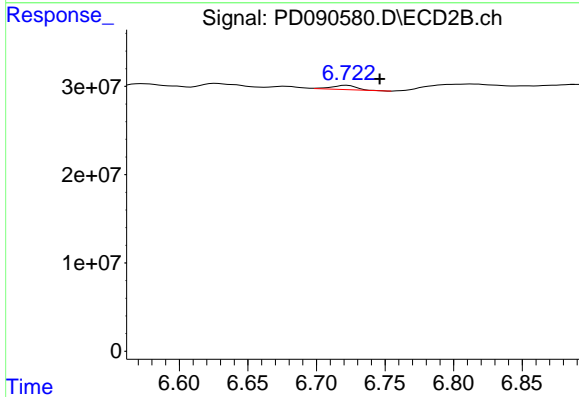
R.T.: 6.469 min
 Delta R.T.: -0.006 min
 Response: 4550036
 Conc: 0.14 ng/ml



#20 Methoxychlor

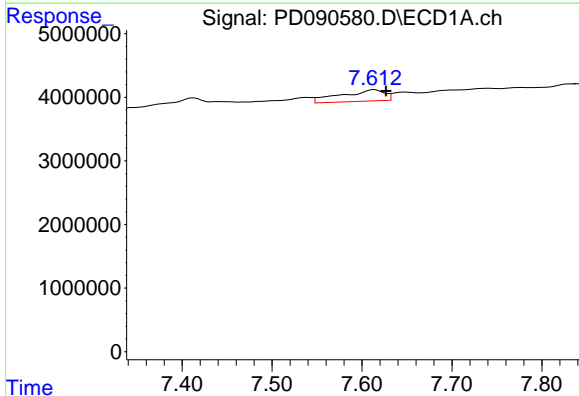
R.T.: 0.000 min
 Exp R.T.: 7.490 min
 Response: 0
 Conc: N.D.

Instrument :
 ECD_D
 ClientSampleId :



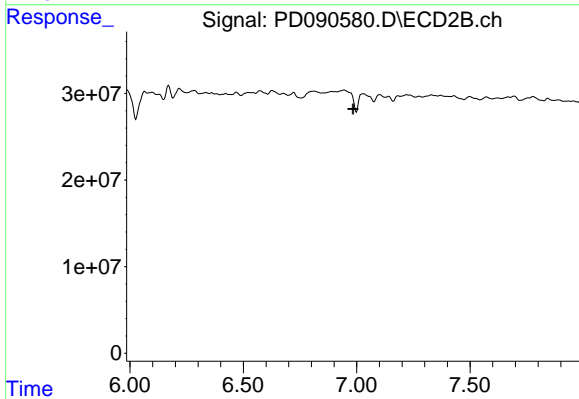
#20 Methoxychlor

R.T.: 6.722 min
 Delta R.T.: -0.024 min
 Response: 6174321
 Conc: 0.35 ng/ml



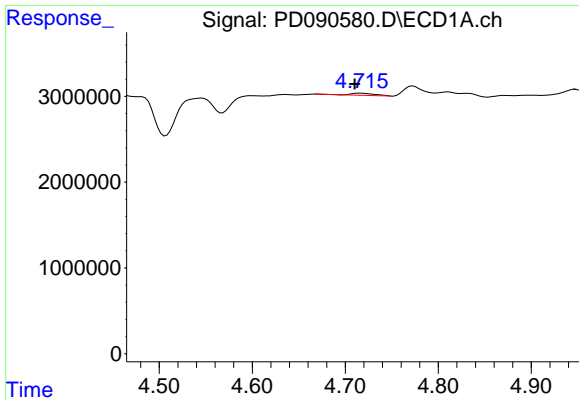
#21 Endrin ketone

R.T.: 7.613 min
 Delta R.T.: -0.013 min
 Response: 6084467
 Conc: 1.23 ng/ml



#21 Endrin ketone

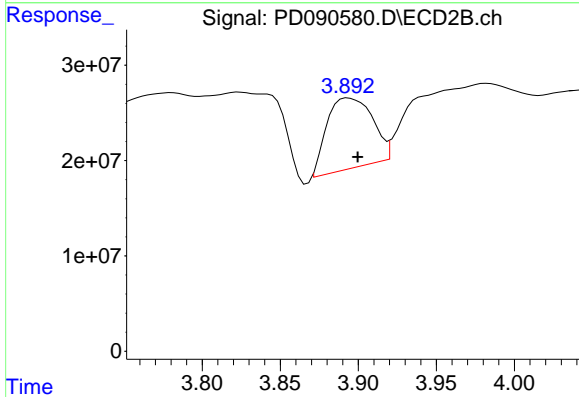
R.T.: 0.000 min
 Exp R.T.: 6.984 min
 Response: 0
 Conc: N.D.



#23 Chlordane-1

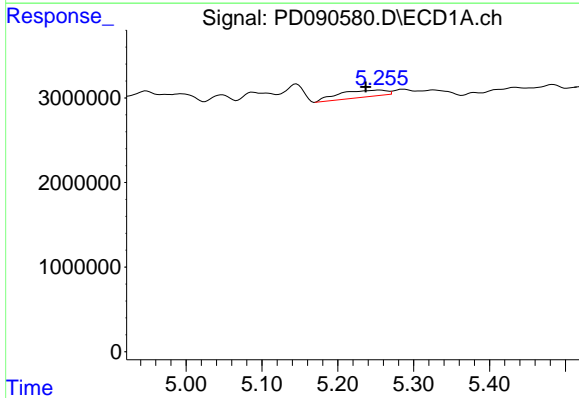
R.T.: 4.716 min
 Delta R.T.: 0.006 min
 Response: 413121
 Conc: 1.97 ng/ml

Instrument :
 ECD_D
 ClientSampleId :



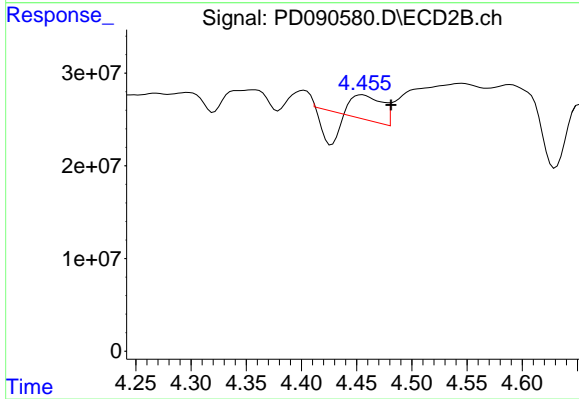
#23 Chlordane-1

R.T.: 3.894 min
 Delta R.T.: -0.006 min
 Response: 148947668
 Conc: 123.76 ng/ml



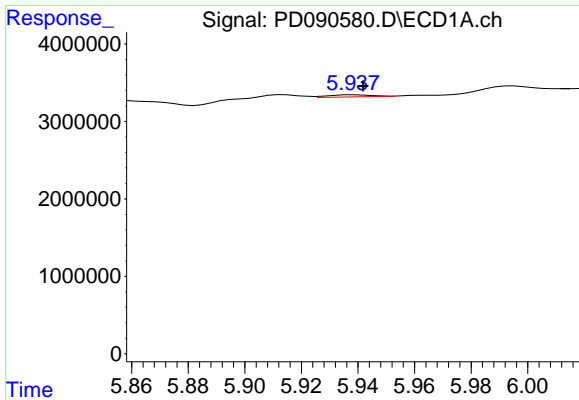
#24 Chlordane-2

R.T.: 5.256 min
 Delta R.T.: 0.019 min
 Response: 3533404
 Conc: 16.47 ng/ml



#24 Chlordane-2

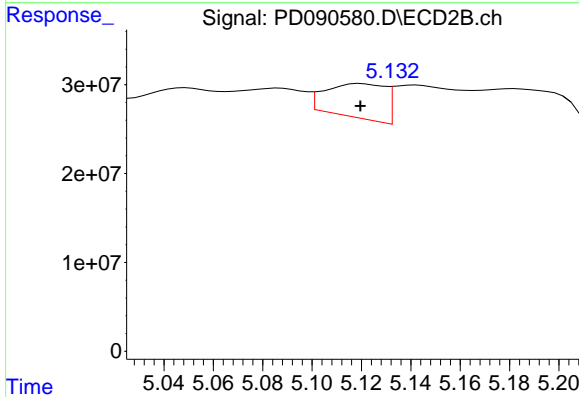
R.T.: 4.455 min
 Delta R.T.: -0.026 min
 Response: 26221888
 Conc: 20.97 ng/ml



#25 Chlordane-3

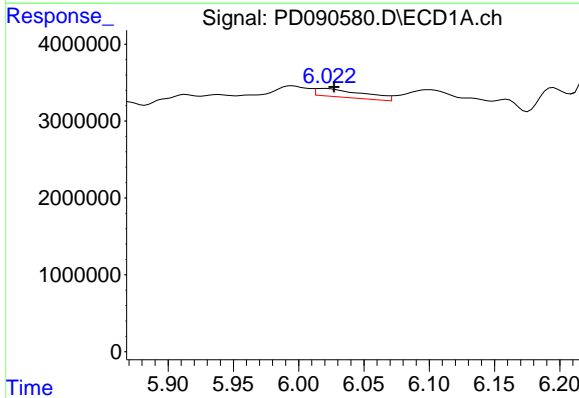
R.T.: 5.939 min
 Delta R.T.: -0.003 min
 Response: 283734
 Conc: 0.34 ng/ml

Instrument :
 ECD_D
 ClientSampleId :



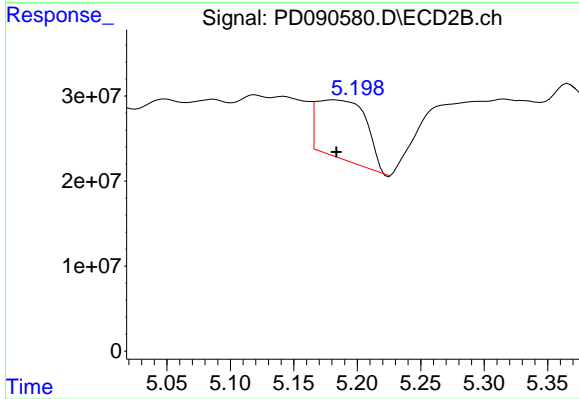
#25 Chlordane-3

R.T.: 5.120 min
 Delta R.T.: 0.000 min
 Response: 64053231
 Conc: 16.90 ng/ml



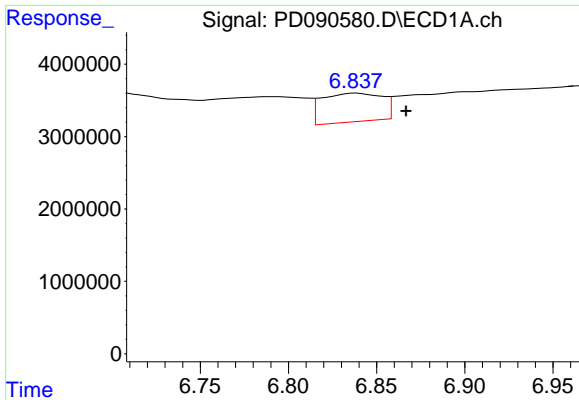
#26 Chlordane-4

R.T.: 6.019 min
 Delta R.T.: -0.008 min
 Response: 2727204
 Conc: 2.67 ng/ml



#26 Chlordane-4

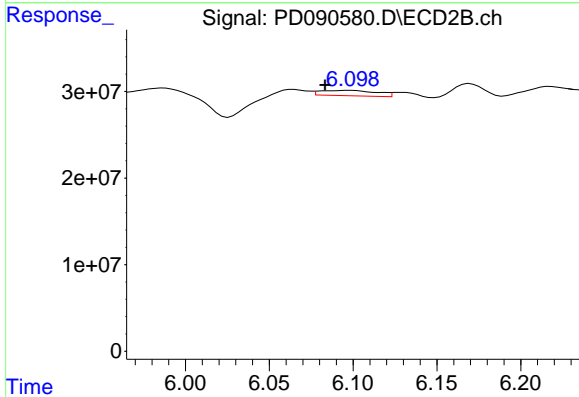
R.T.: 5.182 min
 Delta R.T.: -0.002 min
 Response: 189350750
 Conc: 58.15 ng/ml



#27 Chlordane-5

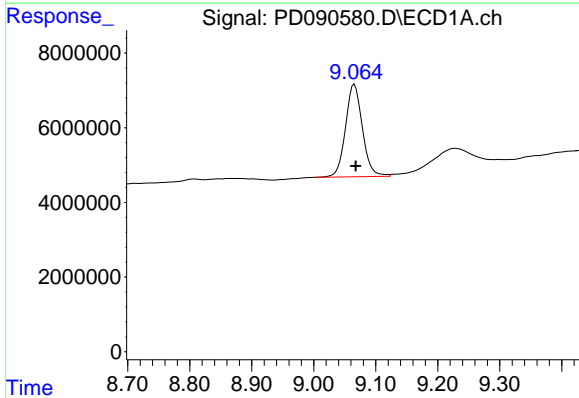
R.T.: 6.838 min
 Delta R.T.: -0.028 min
 Response: 9391917
 Conc: 52.75 ng/ml

Instrument :
 ECD_D
 ClientSampleId :



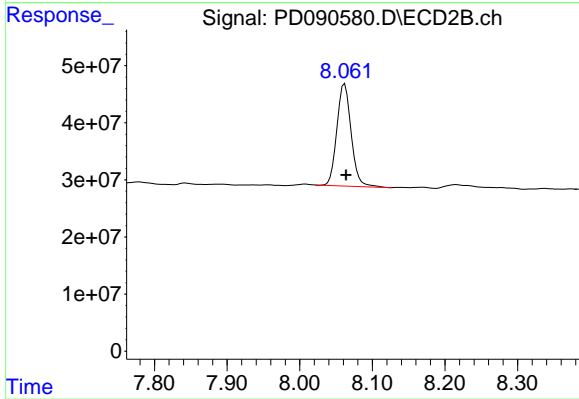
#27 Chlordane-5

R.T.: 6.098 min
 Delta R.T.: 0.014 min
 Response: 14357902
 Conc: 9.46 ng/ml



#28 Decachlorobiphenyl

R.T.: 9.066 min
 Delta R.T.: -0.002 min
 Response: 46828239
 Conc: 9.71 ng/ml



#28 Decachlorobiphenyl

R.T.: 8.062 min
 Delta R.T.: -0.002 min
 Response: 244905924
 Conc: 7.56 ng/ml